



Advisory Announcement

For Immediate Release: July 15, 2023

CONTACT: Heather Scannell and Jeremy Botz
Finfish Area Management Biologists
(907) 424-3212

Prince William Sound Salmon Fishery Announcement #28

SEINE FISHERIES: VFDA has recommended a commercial fishing period targeting SGH pink salmon within Valdez Arm and a portion of Port Valdez.

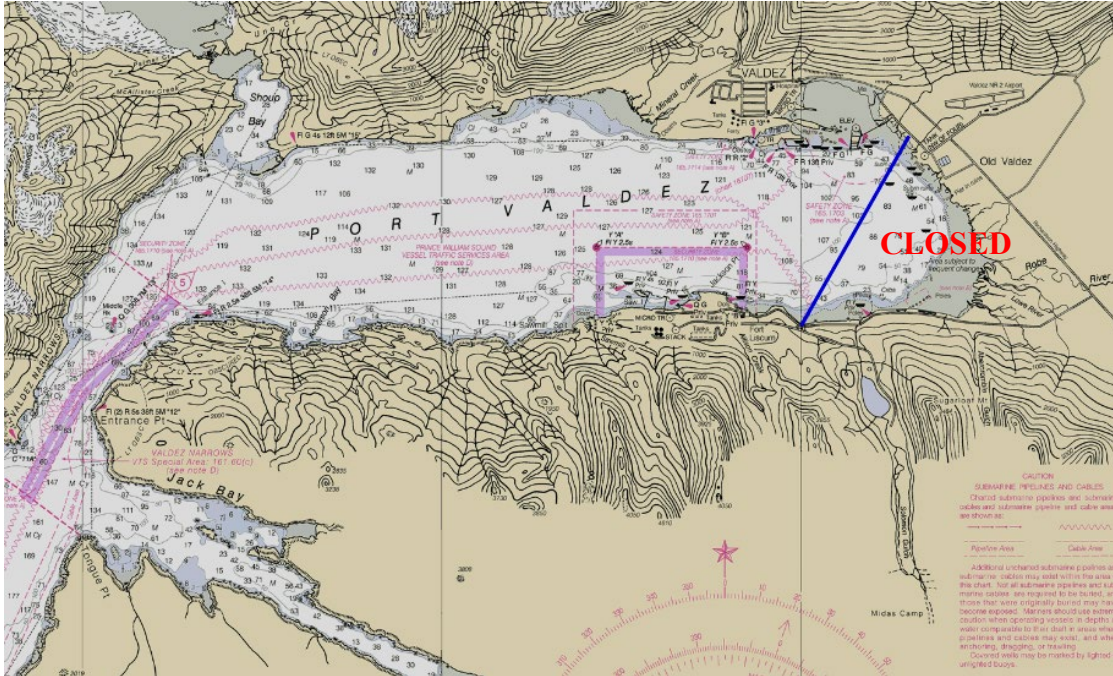
VFDA began its cost recovery sales program on Monday, July 3, and has collected approximately 90% of the assigned pink salmon revenue goal. Pink salmon cost recovery harvest from July 13, resulted in an average weight of 3.0 pounds per fish and a female contribution of 24%. VFDA cost recovery is continuing today.

EASTERN DISTRICT: Waters of the Eastern District, north of the latitude at 60° 54.00' N, will open to commercial purse seine fishing for a 14-hour period, from 6:00 am until 8:00 pm, on Sunday, July 16. **Waters of Port Valdez east of a diagonal line from 146° 20.00' W., 61° 04.95' N, to 146° 17.00' W., 61° 07.50' N., will be CLOSED to commercial fishing during this period.** Regulatory closed waters and anadromous stream closures north of a line from Potato Point to Entrance Point will not be in effect during this fishing period. Preliminary harvest estimates from the fishing period that occurred on July 14 were 3.5 million pink and 16,600 chum salmon with 277 reported deliveries.

Waters within 200 yards of the AMHS Valdez Ferry Terminal are closed to commercial fishing when the ferry is arriving and departing. All waters of the Valdez small boat harbors and within 50 yards of the entrance to the harbors are closed to commercial fishing. Waters within the Alyeska Marine Terminal (Trans-Alaska Pipeline System) Security Zone are closed to commercial fishing.

Waters inside the following Eastern District Salmon Harvest Task Force (SHTF) markers will be closed to commercial fishing during this period to ensure early season escapement:

- (1) **Jack Bay:** south and east of a line from a shore marker at approximately 61°02.34' N. lat., 146°35.27' W. long. to a shore marker at approximately 61°02.17' N. lat., 146°39.77' W. long.;
- (2) **Sawmill Bay:** north of a line from a shore marker at approximately 61°02.71' N. lat., 146°46.44' W. long. to a shore marker at approximately 61°02.58' N. lat., 146°47.07' W. long.
- (3) **Galena Bay:** east of a line from a shore marker at approximately 60°56.87' N. lat., 146°39.87' W. long. to a shore marker at approximately 60°56.55' N. lat., 146°39.65' W. long.;



NORTHERN DISTRICT: Waters of the Northern District, east of a longitude line at 147° 23.00' W., will open to commercial purse seine fishing for a 14-hour period, from 6:00 am until 8:00 pm, on Sunday, July 16. Preliminary harvest estimates from the fishing period that occurred on July 14 are confidential.

Waters inside the following Northern District Salmon Harvest Task Force (SHTF) markers will be closed to commercial fishing during this period to ensure early season escapement:

- (1) **Long Bay:** north of a line from a shore marker at approximately 60° 57.63' N. lat., 147° 13.50' W. long. to a shore marker at approximately 60° 57.01' N. lat., 147° 15.47' W. long.;

COGHILL DISTRICT: The Coghill District, waters of College Fiord, north of a latitude line at Pt. Pakenham (61°0.36' N.), will open to commercial purse seine harvest for a 60-hour period starting at 8:00 am on Monday, July 17. **Until further notice, regulatory closed waters pertaining to the Coghill River, as specified in 5 AAC 24.350(6)(B)), will not be in effect during open commercial fishing periods. Commercial fishing will not be permitted within the bed or channel of the Coghill River at any stage of the tide.** The Coghill River weir has passed 36,767 sockeye salmon through 7/14 with a cumulative target of 15,330–57,497 fish for the date. Continued run entry warrants commercial purse seine fishing opportunity.

SOUTHWESTERN DISTRICT: The AFK Hatchery SHA and THA will open to purse seine fishing for a 36-hour period starting at 8:00 am on Monday, July 17. **Anadromous stream closures within the AFK Hatchery SHA and THA will not be in effect until further notice.**

GILLNET FISHERIES

COPPER RIVER DISTRICT: The Copper River District will open at 7:00 am on Monday, July 17 for a 48-hour commercial drift gillnet fishing period.

The grass bank marker line is defined in 5 AAC 24.350(1)(A) with the exception of this year’s extension of the closure line across Little Softuk (**see bold font below**). This closure line is defined with the following points:

<i>Point</i>	<i>Latitude</i>	<i>Longitude</i>
Point Whitshed South	60° 26.49’ N.	145° 52.86’ W.
Alaganik Slough North	60° 24.65’ N.	145° 36.70’ W.
Pete Dahl East	60° 20.44’ N.	145° 29.14’ W.
West Kokenhenik	60° 14.88’ N.	145° 10.01’ W.
East “East Side”	60° 14.83’ N.	145° 03.36’ W.
Coffee Creek East	60° 14.19’ N.	144° 58.01’ W.
Charlie Mohr North	60° 15.15’ N.	144° 56.43’ W.
Martin River North	60° 15.29’ N.	144° 52.52’ W.
Strawberry Reef	60° 13.93’ N.	144° 50.66’ W.
Little Softuk	60° 13.16’ N.	144° 41.38’ W.

Waters north of this line, within sloughs, and in Boswell Bay within the bay (5 AAC 24.350 (1)(A)) are closed to commercial and subsistence salmon fishing during all periods.

Cumulative sonar count through 7/14 is 831,043 fish whereas 518,874 fish are projected by this date. The 0600 count for 7/15 is 2,087 fish. For the week ending July 15, the actual Copper River Delta survey count was 62,395 sockeye salmon versus an anticipated range 31,424 – 74,276. Preliminary harvest estimates from the 48-hour period that started on Monday, July 10 were 31,600 sockeye and 70 Chinook salmon with 166 deliveries reported. The cumulative Copper River District harvest to date is 10,300 Chinook and 707,000 sockeye salmon.

BERING RIVER DISTRICT: The Bering River District will open to commercial salmon fishing, west of a longitude line at 144° 33.60’ W., for a 60-hour period starting at 7:00 a.m. on Monday, July 17.

COGHILL DISTRICT: The Coghill District, **excluding the Bettles Bay Subdistrict and the WNH SHA inside a line of buoys in front of the barrier seine**, will open to commercial drift gillnet harvest for a 60-hour period starting at 8:00 am on Monday, July 17. **Until further notice, regulatory closed waters pertaining to the Coghill River, as specified in 5 AAC 24.350(6)(B)), will not be in effect during open commercial fishing periods. Commercial fishing will not be permitted within the bed or channel of the Coghill River at any stage of the tide.** The Coghill River weir has passed 36,767 sockeye salmon through 7/14 with a cumulative target of 15,330–57,497 fish for the date. Preliminary harvest estimates from the 60-hour period that started on Monday, July 10 were 191,000 chum, 15,800 pink, and 21,200 sockeye salmon with 551 deliveries reported.

ESHAMY DISTRICT: The Eshamy District will open to commercial gillnet harvest for a 36-hour period starting at 8:00 am on Monday, July 17. The AGZ will open to **SET GILLNET** permit holders only during this fishing period. Preliminary harvest estimates from the 36-hour period that started on Thursday, July 13 were 13,000 sockeye, 4,290 pink, and 2,110 chum salmon with 38 deliveries reported.

MONTAGUE DISTRICT: The Port Chalmers Subdistrict will open to drift gillnet fishing for an 60-hour period starting at 8:00 am on Monday, July 17 with an additional 84-hour period beginning at 8:00 am on Thursday, July 20. A regular schedule of two fishing periods per week is anticipated to remain in effect until further notice. The

western boundary of the Port Chalmers Subdistrict is defined by lines from 60°20.00'N., 147°26.59'W. to 60°14.75'N., 147°35.35'W. to 60°02.50'N., 147°44.41'W. **Regulatory closed waters and anadromous stream closures within the Port Chalmers Subdistrict will not be in effect until further notice.** Preliminary harvest estimates from the 60-hour period that started on Monday, July 10 were 79,800 chum, 5,740 pink, and 1,260 sockeye salmon with 155 deliveries reported.

UNAKWIK DISTRICT: The Unakwik District will open to commercial drift gillnet and purse seine harvest for a 36-hour period starting at 8:00 am on Monday, July 17. No harvest was reported for the 36-hour period that started on Thursday, July 13.

The next scheduled seine fisheries announcement is anticipated to be at 2:00 pm Monday, July 17.

The next scheduled gillnet fisheries announcement is anticipated to be at 2:00 pm Wednesday, July 19.

Announcement recordings are available for gillnet fisheries at 907-424-7535 and seine fisheries at 907-424-7345. In addition, announcement recordings are available in Anchorage at 907-267-2843.