



## Advisory Announcement

*For Immediate Release: July 13, 2023*

**CONTACT: Jeremy Botz and Heather Scannell**  
**Finfish Area Management Biologists**  
**(907) 424-3212**

### Prince William Sound Salmon Fishery Announcement #27

**SEINE FISHERIES:** VFDA has recommended a commercial fishing period targeting SGH pink salmon within a portion of Port Valdez.

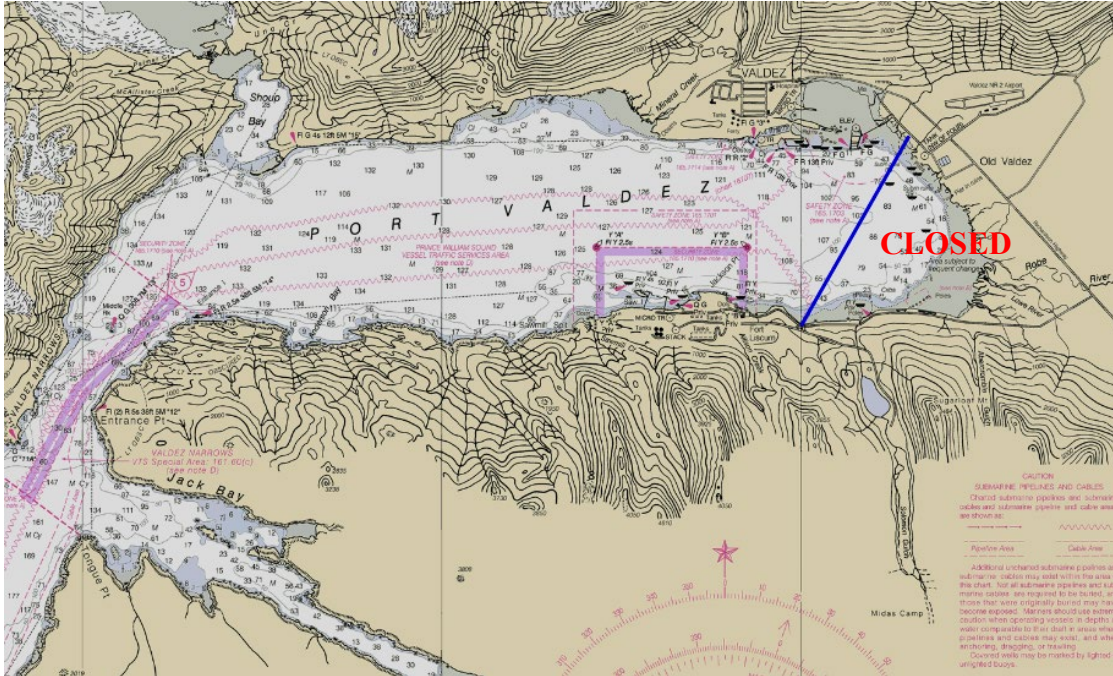
VFDA began its cost recovery sales program on Monday, July 3, and has collected approximately 78% of the assigned pink salmon revenue goal. Pink salmon cost recovery harvest from yesterday, July 12, resulted in an average weight of 3.0 pounds per fish. The most recent female contribution from the CPF on July 11 was 27%. VFDA cost recovery is continuing today.

**EASTERN DISTRICT:** Waters of the Eastern District will open to commercial purse seine fishing for a 12-hour period, from 8:00 am until 8:00 pm, on Friday, July 14. **Waters of Port Valdez east of a diagonal line from 146° 20.00'W., 61° 04.95 N', to 146° 17.00'W., 61° 07.50 N'., will be CLOSED to commercial fishing during this period.** Regulatory closed waters and anadromous stream closures north of a line from Potato Point to Entrance Point will not be in effect during this fishing period.

Waters within 200 yards of the AMHS Valdez Ferry Terminal are closed to commercial fishing when the ferry is arriving and departing. All waters of the Valdez small boat harbors and within 50 yards of the entrance to the harbors are closed to commercial fishing. Waters within the Alyeska Marine Terminal (Trans-Alaska Pipeline System) Security Zone are closed to commercial fishing.

**Waters inside the following Eastern District Salmon Harvest Task Force (SHTF) markers will be closed to commercial fishing during this period to ensure early season escapement:**

- (1) **Jack Bay:** south and east of a line from a shore marker at approximately 61°02.34' N. lat., 146°35.27' W. long. to a shore marker at approximately 61°02.17' N. lat., 146°39.77' W. long.;
- (2) **Sawmill Bay:** north of a line from a shore marker at approximately 61°02.71' N. lat., 146°46.44' W. long. to a shore marker at approximately 61°02.58' N. lat., 146°47.07' W. long.
- (3) **Galena Bay:** east of a line from a shore marker at approximately 60°56.87' N. lat., 146°39.87' W. long. to a shore marker at approximately 60°56.55' N. lat., 146°39.65' W. long.;
- (4) **Landlocked Bay:** waters north of 60°50.76' N. lat.;
- (5) **Irish Cove:** south of a line from a shore marker at approximately 60°46.73' N. lat., 146°26.62' W. long. to a shore marker at approximately 60°46.27' N. lat., 146°27.12' W. long.;



**NORTHERN DISTRICT:** Waters of the Northern District, **WEST of a longitude line at 147° 23.00' W. and excluding waters of the Perry Island and CCH Subdistricts**, will open to commercial purse seine fishing for a 12-hour period, from 8:00 am until 8:00 pm, on Friday, July 14.

**SOUTHEASTERN DISTRICT:** Waters of the Southeastern District will open to commercial purse seine fishing for a 12-hour period, from 8:00 am until 8:00 pm, on Friday, July 14.

**SOUTHWESTERN DISTRICT:** The AFK Hatchery SHA and THA will open to purse seine fishing for a 36-hour period starting at 8:00 am on Saturday, July 15. **Anadromous stream closures within the AFK Hatchery SHA and THA will not be in effect until further notice.**

**The next scheduled seine fisheries announcement is anticipated to be at 2:00 pm Saturday, July 15. The next scheduled gillnet fisheries announcement is anticipated to be at 2:00 pm Saturday, July 15.**

Announcement recordings are available for gillnet fisheries at 907-424-7535 and seine fisheries at 907-424-7345. In addition, announcement recordings are available in Anchorage at 907-267-2843.