



Advisory Announcement

For Immediate Release: July 10, 2023

CONTACT: Jeremy Botz and Heather Scannell
Finfish Area Management Biologists
(907) 424-3212

Prince William Sound Salmon Fishery Announcement #23

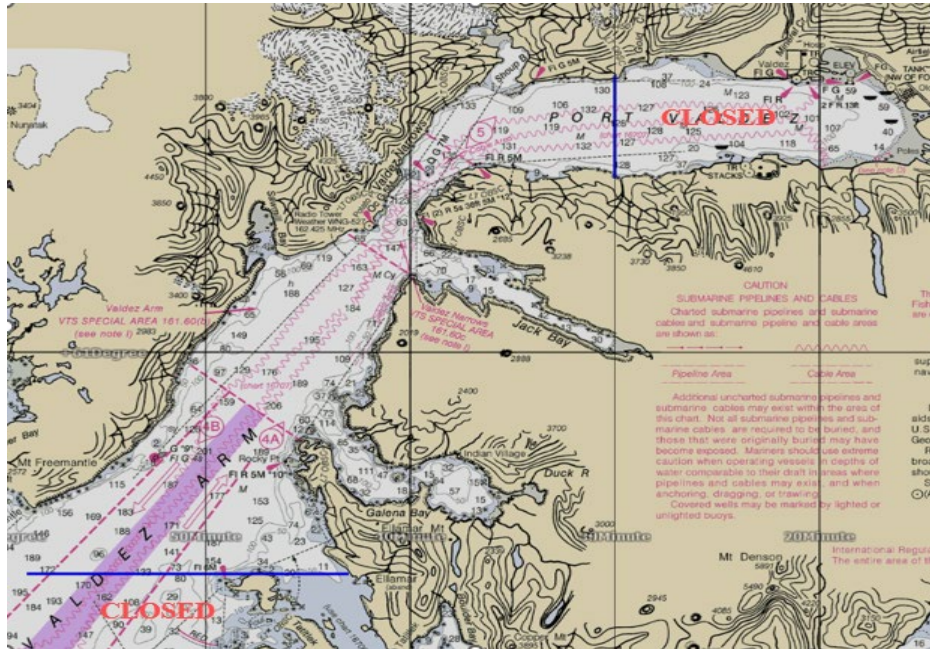
SEINE FISHERIES: VFDA has recommended a commercial fishing period targeting SGH fish within Valdez Arm and a portion of Port Valdez.

VFDA began its cost recovery sales program on Monday, July 3, and has collected approximately 45% of the assigned pink salmon revenue goal. Pink salmon cost recovery harvest from yesterday, July 9, resulted in an average weight of 3.0 pounds per fish and 21% female. VFDA cost recovery is continuing today.

EASTERN DISTRICT: Waters of the Eastern District, excluding all waters south of the latitude of 60° 54.00'N., will open to commercial purse seine fishing for a 12-hour period, from 8:00 am until 8:00 pm, on Tuesday, July 11. **Waters of Port Valdez east of the longitude of 146° 30.00 W. will be closed for this period.** Anadromous stream closures will not be in effect north of a line from Potato Point to Entrance Point. Preliminary harvest estimates from the period occurring on Saturday, July 8 were 520,300 pink, 38,700 chum, and 2,100 sockeye salmon with 120 deliveries reported. Contribution estimates from fish sampled on July 8 were 60% SGH and 40% wild.

Waters inside the following Eastern District Salmon Harvest Task Force (SHTF) markers will be closed to commercial fishing during this period to ensure early season escapement:

- (1) **Jack Bay:** waters south and east of a line from a shore marker at approximately 61°02.34' N. lat., 146°35.27' W. long. to a shore marker at approximately 61°02.17' N. lat., 146°39.77' W. long.;
- (2) **Sawmill Bay:** north of a line from a shore marker at approximately 61°02.71' N. lat., 146°46.44' W. long. to a shore marker at approximately 61°02.58' N. lat., 146°47.07' W. long.
- (3) **Galena Bay:** waters east of a line from a shore marker at approximately 60°56.87' N. lat., 146°39.87' W. long. to a shore marker at approximately 60°56.55' N. lat., 146°39.65' W. long.;



SOUTHWESTERN DISTRICT: The AFK Hatchery SHA and THA will open to purse seine fishing for a 36-hour period starting at 8:00 am on Wednesday, July 12. **Anadromous stream closures within the AFK Hatchery SHA and THA will not be in effect until further notice.** Preliminary harvest estimates from the period ending on Sunday, July 9 were 19,700 chum, 9,300 pink, and 950 sockeye salmon with 22 deliveries reported.

The next scheduled seine fisheries announcement is anticipated to be at 2:00 pm Wednesday, July 12.
The next scheduled gillnet fisheries announcement is anticipated to be at 2:00 pm Wednesday, July 12.

Announcement recordings are available for gillnet fisheries at 907-424-7535 and seine fisheries at 907-424-7345. In addition, announcement recordings are available in Anchorage at 907-267-2843.