



Advisory Announcement
For Immediate Release: June 26, 2023

CONTACT: Grant Hagerman
Region I Commercial Troll Management Biologist
grant.hagerman@alaska.gov
(907) 747-6688

PORT ARMSTRONG TERMINAL HARVEST AREA TROLL FISHERY

The Port Armstrong Terminal Harvest Area (THA) commercial salmon troll fishery will open for the harvest of coho, chum, pink, and sockeye salmon from 12:01 a.m., Saturday, July 1, through 11:59 p.m., Wednesday, September 20, unless closed under emergency order authority. Chinook salmon may only be retained and possessed in the THA during open Chinook salmon retention periods established for the summer troll fishery under 5 AAC 29.100(c). Coordinates and descriptions of locations have been added or modified to reflect the location of these points more accurately.

The waters of the **Port Armstrong THA (statistical area 109-11)** are described as the waters of Port Armstrong west of a line from Point Eliza at 56°17.68' N lat, 134°38.96' W long to a point on the Baranof Island shoreline at 56°17.97' N lat, 134°38.45' W long (Figure 1).

Waters north of a line from 56°17.61' N lat, 134°40.27' W long, to 56°17.67' N lat, 134°39.64' W long are closed to commercial salmon fishing with troll gear.

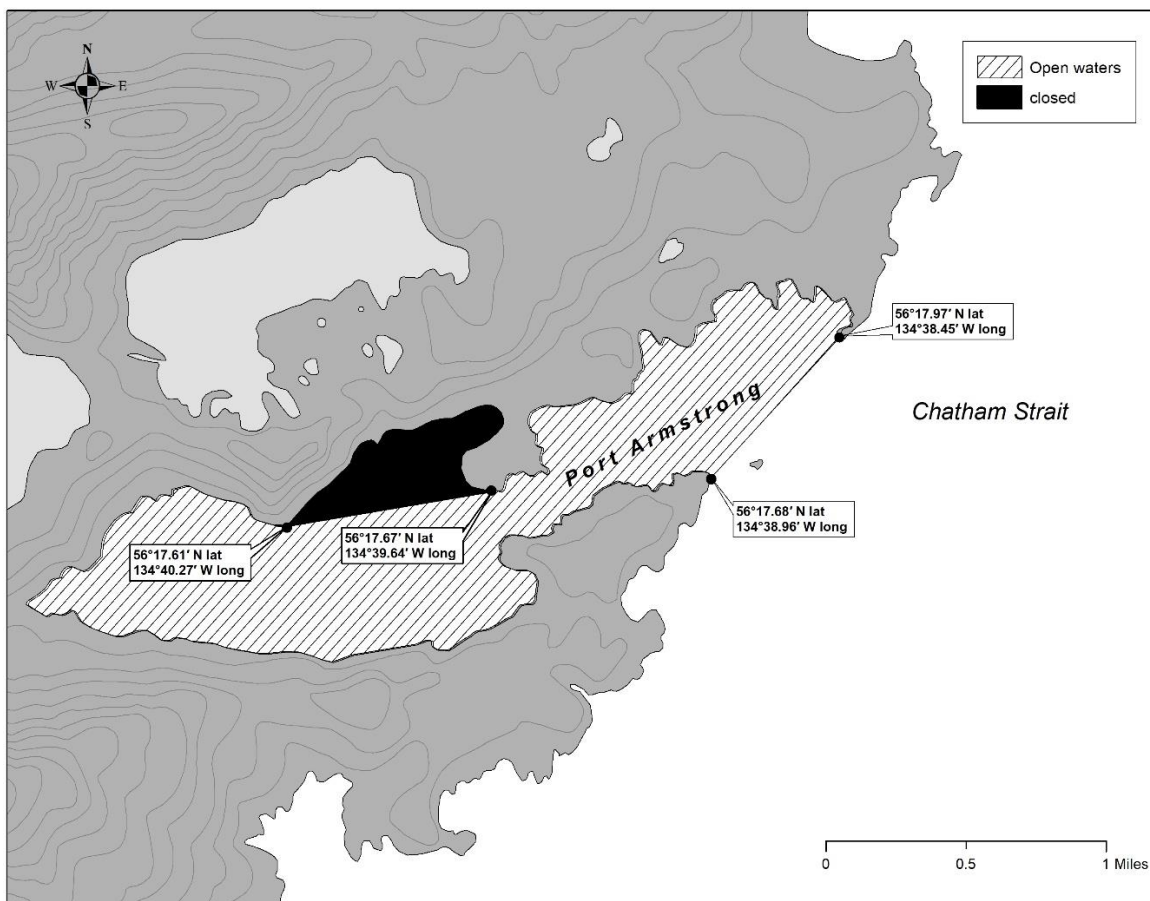


Figure 1.—Waters of the Port Armstrong THA open to troll gear.

Trollers and processors are instructed to report **statistical area 109-10** on fish tickets when documenting salmon harvested in the waters of Chatham Strait adjacent to the Port Armstrong THA.

The Emergency Order corresponding with this announcement is 1E1823.

Advisory Announcement web site: <http://www.adfg.alaska.gov/index.cfm?adfg=cfnews.main>.

<i>Office</i>	<i>Ketchikan</i>	<i>Petersburg</i>	<i>Sitka</i>	<i>Juneau</i>	<i>Haines</i>	<i>Hoonah</i>	<i>Yakutat</i>
<i>ADF&G</i>	225-5195	772-3801	747-6688	465-4250	766-2830		784-3255
<i>AWT</i>	225-5111	772-3983	747-3254	465-4000		945-3620	
<i>Troll Hotline</i>	225-6870		747-8765	465-8765			