



Advisory Announcement

CONTACT:

Deena Jallen, Area Management Biologist
907-949-1320 (Emmonak)

Released: June 21, 2023

Toll free fishing schedule and counts: 1-866-479-7387

2023 Yukon River Salmon Summer Fishery Announcement #12 District 6 (Tanana River) Subsistence and Personal Use Fishing Schedule

Districts Affected: Upper Yukon Area

The first pulse of the Chinook salmon run may be passing by Pilot Station sonar. While daily passage estimates have picked up recently, the cumulative total for the season remains well below average and is similar to 2022. Consistent with the preseason management strategy to take a conservative approach this season, subsistence fishing closures will continue upriver based on run timing. This is intended to protect Chinook salmon stocks while they migrate upriver to spawning areas in Alaska.

Subsistence fishing opportunities with selective gear types may be announced for summer chum salmon once the run is projected to meet the lower end of the drainagewide escapement goal (at least 500,000 fish).

Assessment project and management updates will be shared during the weekly YR DFA teleconferences each **Tuesday at 1:00 p.m. (Alaska time). Call in number: 1-800-315-6338, Passcode: 98566#**

Subsistence Management Actions

Gillnets of 4-inch or smaller mesh may be used during salmon fishing closures to target nonsalmon. Fishermen are reminded to set this gear in areas where nonsalmon species are abundant to avoid incidentally harvesting salmon. While any salmon caught in this gear may be kept, if it appears salmon are being targeted with this gear, it could be further restricted.

Subdistrict 6-A and Kantishna River (from the mouth of the Tanana River upstream to the eastern edge of the mouth of the Kantishna River, including the Kantishna River drainage, Lake Minchumina, and Manley):

Subsistence fishing is currently open 24 hours a day, seven days per week with 7.5-inch or smaller mesh gillnets.

Effective 8 p.m. Tuesday, June 27, salmon fishing is closed. Fish wheels and gillnets larger than 4-inch are not allowed. Gillnets of 4-inch or smaller mesh may be used to target nonsalmon and are restricted to 60-feet or less in length and must be operated as a set net. Nets should be set near shore.

Dip nets and beach seines may be used for nonsalmon species, pink and sockeye salmon; however, Chinook and summer chum salmon must be released alive.

Subsistence fishing for nonsalmon is open 24 hours a day, seven days per week with 6-inch or smaller mesh gillnets in Lake Minchumina.

Subdistrict 6-B and Old Minto Area (from eastern edge of the Kantishna River upstream to the Wood River, including Minto and Nenana):

Subsistence fishing is currently open 24 hours a day, seven days per week with 7.5-inch or smaller mesh gillnets.

Effective 8 p.m. Thursday, June 29, salmon fishing is closed. Fish wheels and gillnets larger than 4-inch are not allowed. Gillnets of 4-inch or smaller mesh may be used to target nonsalmon and are restricted to 60-feet or less in length and must be operated as a set net. Nets should be set near shore.

Dip nets and beach seines may be used for nonsalmon species, pink and sockeye salmon; however, Chinook and summer chum salmon must be released alive.

Subsistence fishing for nonsalmon is open 24 hours a day, seven days per week with 6-inch or smaller mesh gillnets in the Tolovana River drainage, including Minto Flats. Note, a subsistence pike permit is required, see details below.

Upper Tanana Area (the Tanana River from the confluence with the mouth of Volkmar River on the north bank and the mouth of the Johnson River on the south bank upstream to the Tanana River headwaters, including Delta Junction area, Dot Lake, Tanacross, Tetlin, Tok, Northway, and Nabesna):

Subsistence fishing is currently open 24 hours a day, seven days per week with 7.5-inch or smaller mesh gillnets.

Effective 8 p.m. Monday, July 3, salmon fishing is closed. Fish wheels and gillnets larger than 4-inch are not allowed. Gillnets of 4-inch or smaller mesh may be used to target nonsalmon and are restricted to 60-feet or less in length and must be operated as a set net. Nets should be set near shore.

Dip nets and beach seines may be used for nonsalmon species, pink and sockeye salmon; however, Chinook and summer chum salmon must be released alive.

A reminder to fishermen that a subsistence permit is required to fish for salmon in the Tanana River drainage up to the Wood River (Subdistrict 6-A, 6-B, and Kantishna River drainage), northern pike in the Tolovana River drainage (including Minto Flats), and all species in the Upper Tanana Area. A subsistence salmon permit is not required in Lake Minchumina.

Gear types for nonsalmon species include dip net, beach seine, hand line, longline, fyke net, lead, and spear, and during subsistence salmon fishing closures Chinook and summer chum salmon must be released alive. Pink and sockeye salmon may be retained. Hook and line gear may not be used for subsistence fishing in District 6 during ice free months (Figure 1).

Submerged gillnets may be used for subsistence fishing during ice-free months, however submerged nets must have a visible buoy or cluster of floats attached to both ends of the net. All gillnets must be marked with a buoy, float, or keg that has the fisherman's first initial, last name, and address.

Personal Use Management Actions

Subdistrict 6-C (Personal use fishery from the regulatory marker at the mouth of the Wood River upstream to the downstream mouth of the Salcha River, which includes the communities of Fairbanks, North Pole, and Salcha):

Personal Use salmon fishing is open with 7.5-inch or smaller mesh gillnets and fish wheels for two 42-hour periods per week from:

6 p.m. Fridays to 12 p.m. (noon) Sundays

6 p.m. Mondays to 12 p.m. (noon) Wednesdays.

Effective 12 p.m. (noon) Sunday, July 2, Personal Use salmon fishing will close and periods are cancelled until further notice.

Personal Use Whitefish and Sucker Fishing

Fairbanks Nonsubsistence Area (a portion of the Tanana River drainage from the Wood River upstream to the mouth of the Volkmar River on the north bank and the mouth of the Johnson River on the south bank, which includes Fairbanks, North Pole, Salcha, and Delta Junction):

Personal Use whitefish and sucker fishing with gillnets and fish wheels follows the Subdistrict 6-C Personal Use salmon fishing schedule and will close at 12 p.m. (noon) Sunday, July 2 until further notice. Fishing with other gear for whitefish and suckers in this area remains open 7 days per week, 24 hours per day, subject to permit stipulations.

A reminder to personal use fishermen that a personal use salmon permit is required to fish for salmon in Subdistrict 6-C and a personal use whitefish and sucker permit is required to fish for these species in the Fairbanks Nonsubsistence Area. Both permits require a valid sport fishing license.

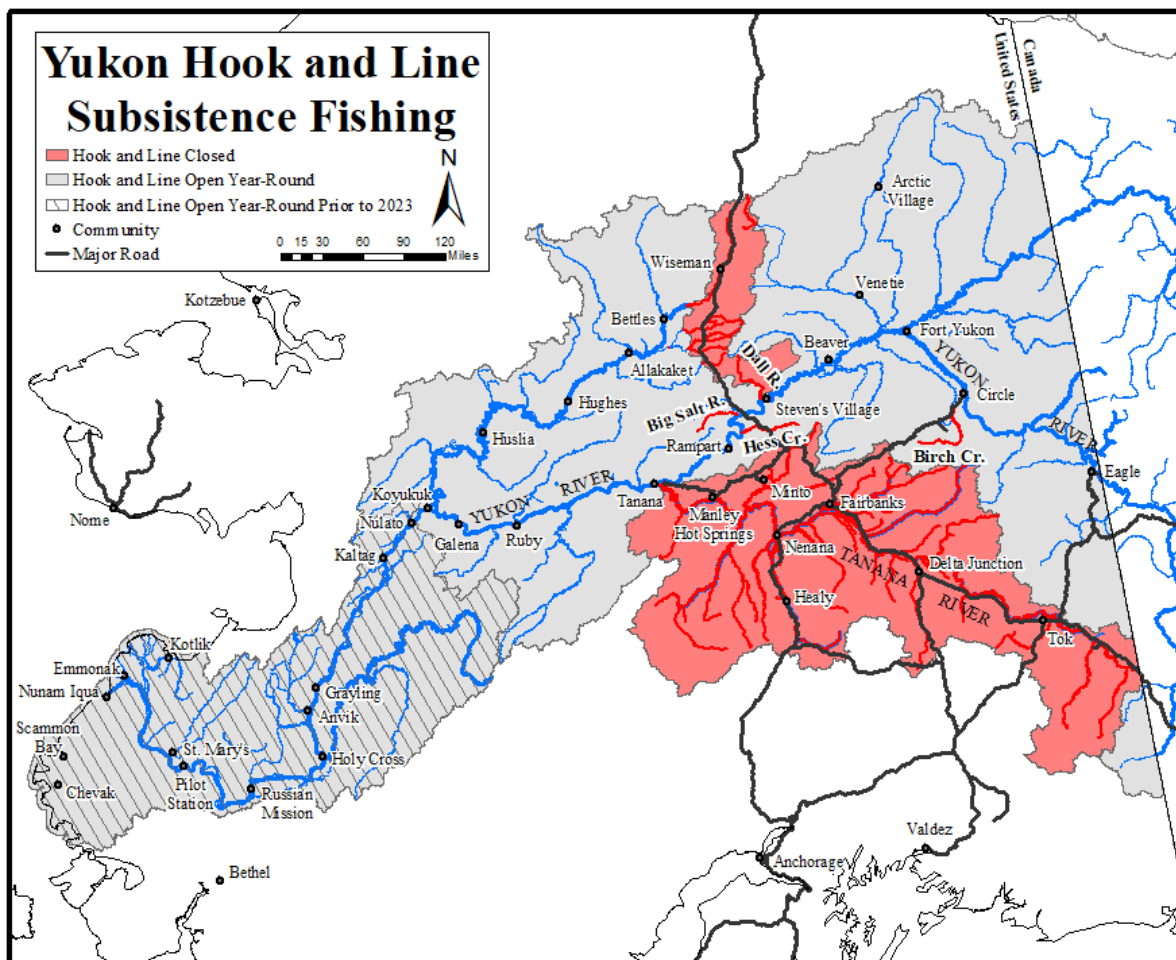


Figure 1. Areas where hook and line are legal as a subsistence fishing gear type in the Yukon Area (gray shaded areas). Closed areas for subsistence fishing with hook and line (red/darker shaded areas) include the Tanana River drainage, Big Salt River, Hess Creek, Dall River drainage, Birch Creek upstream of the Steese Highway bridge, Fish Creek drainage upstream from the mouth of Bonanza Creek, Bonanza Creek drainage, Kanuti River drainage upstream from a point 5 miles downstream of the state highway crossing, and Jim River drainage.

The ADF&G Emmonak office is open Mondays to Fridays 8 a.m. to 5 p.m., Saturdays 1 p.m. to 5 p.m. (closed Sundays). ADF&G Emmonak office: 1-907-949-1320.

Federal Special Action

The Alaska Department of Fish and Game (ADF&G) and the U.S. Fish and Wildlife Service (USFWS) have coordinated on this advisory announcement. As there is no salmon fishing allowed for Chinook and chum salmon, the Federal manager has not issued any Federal special actions at this time. The Emmonak USFWS office is not open. To reach the USFWS Yukon River Subsistence Fishery Manager, call Holly Carroll at 1-907-351-3029.



This is an announcement by the ADF&G and the USFWS. Federal Special Actions will be posted on www.doi.gov/subsistence/fisheries-special-actions.

ADF&G Advisory Announcements will be posted on www.cfnews.adfg.alaska.gov/ and shared on Facebook at www.facebook.com/YukonRiverFishingADFG.

