

Division of Commercial Fisheries  
Sam Rabung, Director

Region I, Petersburg Area Office  
PO Box 667  
Petersburg, AK 99833



Alaska Department of Fish and Game  
Doug Vincent-Lang, Commissioner

PO Box 115526  
Juneau, AK 99811-5526  
[www.adfg.alaska.gov](http://www.adfg.alaska.gov)

**Advisory Announcement**  
***For Immediate Release: February 10, 2023***

**CONTACT: Troy Thynes**  
**Region I Management Coordinator**  
**(907) 772-3801**

**2023 SOUTHEAST ALASKA EULACHON SMELT FISHERY ANNOUNCEMENT**

The following describes open and closed areas and fisheries for eulachon smelt (*Thaleichthys pacificus*) for the 2023 season. These closures will be in effect beginning 12:01 a.m., March 1, 2023:

District 1: will be closed to commercial, personal use, and subsistence eulachon smelt fishing in all waters. This includes all Revillagigedo Island and mainland drainages;

District 7: will be closed to commercial, personal use, and subsistence eulachon smelt fishing in all waters;

District 8: will be closed to commercial eulachon fishing. **Subsistence and personal use fishing for eulachon smelt will remain open.**

Eulachon smelt spawning runs in the southern portions of Southeast Alaska have had large fluctuations over the last 20 years and continue to show poor to moderate returns to many areas with traditional runs of eulachon smelt.

Stock status information for each of the above areas is limited and a conservative approach is necessary for sustaining and rebuilding the health of these stocks.

The Emergency Order corresponding with this announcement is EO 1H0123.

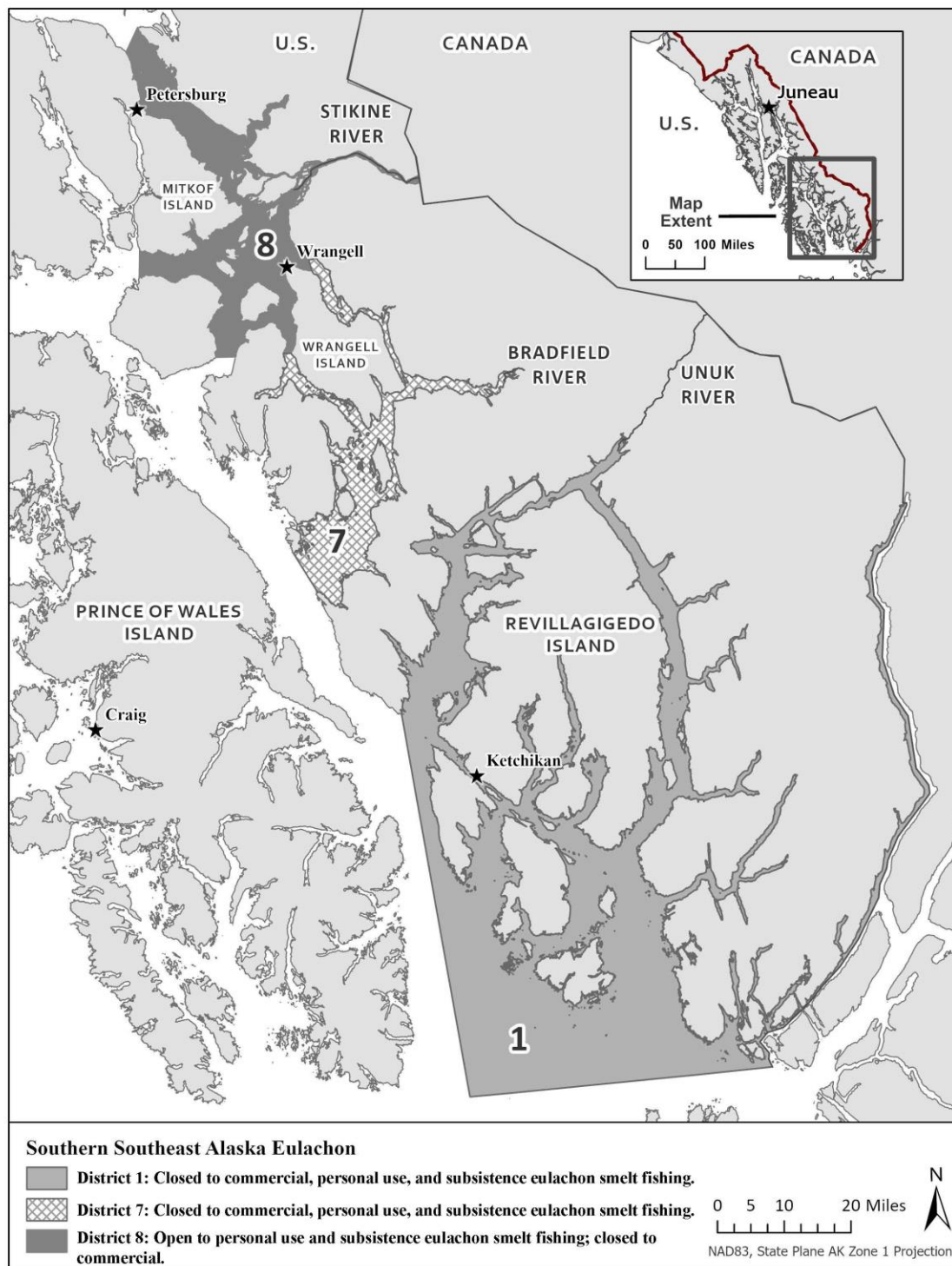


Figure 1. Map of southern Southeast Alaska eulachon fisheries.

Advisory Announcement web site: <http://www.adfg.alaska.gov/index.cfm?adfg=cfnews.main>.

Office	Ketchikan	Petersburg	Wrangell	Sitka	Juneau	Haines	Yakutat
ADF&G	225-5195	772-3801		747-6688	465-4250	766-2830	784-3255
AWT	225-5111	772-3983	874-3215	747-3254	465-4000	766-2533	784-3220