



**Advisory Announcement**  
*For Immediate Release: July 27, 2021*

**CONTACT: Jeremy Botz and Heather Scannell**  
**Finfish Area Management Biologists**  
**(907) 424-3212**

**Prince William Sound Salmon Fishery Announcement #48**

**SEINE FISHERIES:** This announcement will provide time and area specifics for a broad area commercial purse seine fishing opportunity in PWS on Wednesday, July 28.

PWSAC began its cost recovery sales program on Monday, July 26, and has collected approximately 4% of the assigned pink salmon revenue goal. Cost recovery fishing continues today at AFK and CCH.

Aerial surveys of all districts are expected to be conducted later this week, weather dependent, to assess the strength of wild stock returns throughout PWS. Both pink and chum salmon escapements are within or near the expected ranges for the date within each district. Future fishing opportunities targeting wild stocks will be dependent on aerial assessment data, harvest, and effort.

Preliminary contribution estimates from the 14-hour fishing period on Thursday, July 22 are as follows:

- **Eastern District:** 38% SGH, 2% WNH, and 60% wild.
- **Southwestern District:** 13% SGH, 10% WNH, 5% AFK, 2% CCH, and 71% wild.
- **Northern District:** 36% SGH, 5% CCH, 2% WNH, and 56% wild.
- **Northwestern District:** 7% WNH, 2% SGH, and 91% wild.

**5 AAC 24.350 Closed Waters.** Unless otherwise specified all regulatory closed waters and anadromous stream closures are in effect.

**EASTERN DISTRICT:** Waters of the Eastern District south of a latitude of 60° 57.00' N., will open to commercial purse seine fishing for a 14-hour period, from 6:00 am until 8:00 pm, on Wednesday, July 28.

**Waters inside the following Eastern District Salmon Harvest Task Force (SHTF) markers will be closed for this period to ensure escapement:**

- (1) **Sheep Bay:** north of a line from a shore marker at approximately 60°41.13' N. lat., 145°58.87' W. long. to a shore marker at approximately 60°40.46' N. lat., 145°58.01' W. long.;
- (2) **Beartrap Bay:** north of a line from a shore marker at approximately 60°45.13' N. lat., 146°06.12' W. long. to a shore marker at approximately 60°44.51' N. lat., 146°04.57' W. long.; **this includes all waters of Port Gravina and Beartrap Bay inside of this line;**

- (3) **Olsen Bay**: north of a line from a shore marker at approximately 60°43.46' N. lat., 146°10.14' W. long. to a shore marker at approximately 60°43.21' N. lat., 146°13.97' W. long.;
- (4) **St. Matthews Bay**: north of a line from a shore marker at approximately 60°43.36' N. lat., 146°19.07' W. long. to a shore maker at approximately 60°43.61' N. lat., 146°21.17' W. long.;
- (5) **Irish Cove**: south of a line from a shore marker at approximately 60°46.73' N. lat., 146°26.62' W. long. to a shore marker at approximately 60°46.27' N. lat., 146°27.12' W. long.;
- (6) **Landlocked Bay**: waters north of 60°50.76' N. lat.;
- (7) **Port Fidalgo Subdistrict**: waters east of 146°24.12' W. long.

**NORTHERN DISTRICT**: Waters of the Northern District, **excluding waters of the Perry Island Subdistrict, Cannery Creek Subdistrict, and CCH SHA and THA**, will open to commercial purse seine fishing for a 14-hour period, from 6:00 am until 8:00 pm, on Wednesday, July 28.

**Waters inside of the following Northern District Salmon Harvest Task Force (SHTF) markers will be closed for this period to ensure escapement.**

- (1) **Long Bay**: north of a line from a shore marker at approximately 60°57.63' N. lat., 147°13.50' W. long. to a shore marker at approximately 60°57.01' N. lat., 147°15.47' W. long.;
- (2) **Granite Bay**: north and east of a line from a shore marker at approximately 60°55.02' N. lat., 147°27.61' W. long. to a shore marker at approximately 60°54.66' N. lat., 147°26.72' W. long.;
- (3) **Cedar Bay**: north and east of a line from a shore marker at approximately 60°56.46' N. lat., 147°27.03' W. long. to a shore marker at approximately 60°56.03' N. lat., 147°26.39' W. long.;
- (4) **Wells Bay**: north of a line from a shore marker at approximately 60°56.75' N. lat., 147°29.92' W. long. to a shore marker at approximately 60°57.08' N. lat., 147°28.14' W. long.;
- (5) **Eaglek Bay**: north of a line from a shore marker at approximately 60°50.66' N. lat., 147°40.27' W. long. to a shore marker at approximately 60°50.56' N. lat., 147°44.57' W. long.;

**COGHILL DISTRICT**: Waters of the Coghill District, **excluding waters of the Esther Subdistrict and waters of the WNH SHA and THA**, will open to commercial purse seine and drift gillnet fishing for a 14-hour period, from 6:00 am until 8:00 pm, on Wednesday, July 28.

**NORTHWESTERN DISTRICT**: Waters of the Northwestern District will open to commercial purse seine fishing for a 14-hour period, from 6:00 am until 8:00 pm, on Wednesday, July 28.

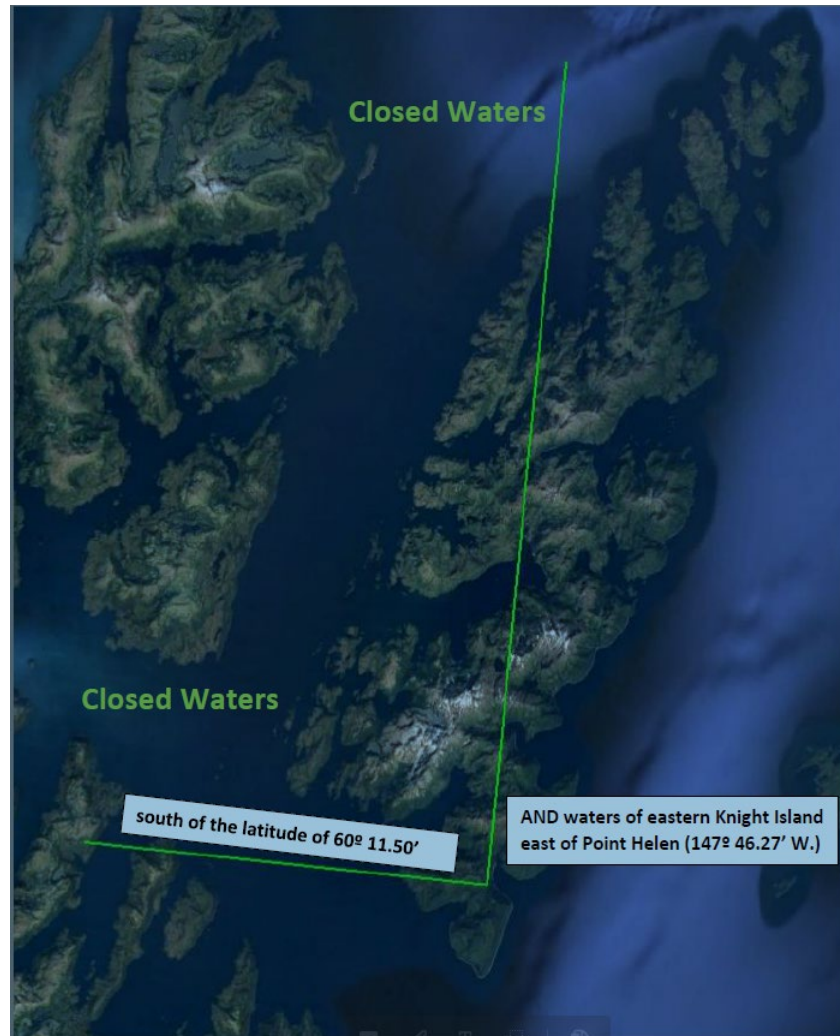
**Waters inside the following Northwestern District Salmon Harvest Task Force (SHTF) markers will be closed for this period to ensure escapement:**

- (1) **Cochrane Bay**: south of a line from a shore marker at approximately 60°44.91' N. lat., 148°17.12' W. long. to a shore marker at approximately 60°46.01' N. lat., 148°21.77' W. long.;
- (2) **Culross Pass**: within the passage south of a line from a shore marker at approximately 60°45.47' N. lat., 148°12.63' W. long. to a shore marker at approximately 60°45.82' N. lat., 148°13.57' W. long. and north of a line from a shore marker at approximately 60°37.48' N. lat., 148°10.12' W. long. to a shore marker at approximately 60°37.16' N. lat., 148°11.42' W. long.;
- (3) **Port Nellie Juan**: south and west of a line from a shore marker at approximately 60°30.36' N. lat., 148°15.03' W. long. to a shore marker at approximately 60°32.36' N. lat., 148°19.42' W. long.

**MONTAGUE DISTRICT**: Waters of the Montague District will open to commercial purse seine fishing for a 14-hour period, from 6:00 am until 8:00 pm, on Wednesday, July 28.

**SOUTHEASTERN DISTRICT:** Waters of the Southeastern District will open to commercial purse seine fishing for a 14-hour period, from 6:00 am until 8:00 pm, on Wednesday, July 28.

**SOUTHWESTERN DISTRICT:** Waters south of the latitude of 60° 11.50' N., and waters of eastern Knight Island east of Point Helen (147° 46.27' W.), will open to commercial purse seine fishing for a 14-hour period from 6:00 am until 8:00 pm on Wednesday, July 28. **Waters of the AFK THA and SHA, will remain closed during this fishing period.**



**The next scheduled seine fisheries announcement is anticipated to be at 2:00 p.m. Thursday, July 29.  
The next scheduled gillnet fisheries announcement is anticipated to be at 2:00 p.m. Wednesday, July 28.**

Announcement recordings are available for **gillnet fisheries at 907-424-7535 and seine fisheries at 907-424-7345. In addition, announcement recordings are available in Anchorage at 267-2843.**

Additionally, announcements, inseason harvest data, and escapement data are available at the following web address:

<http://www.adfg.alaska.gov/index.cfm?adfg=commercialbyareapws.main> (Prince William Sound and Copper River homepage).

Unless otherwise specified, all openings are clock openings based on Alaska Daylight Time, which is based on Coordinated Universal Time and may be obtained by calling 303-499-7111.

The department encourages commercial permit holders to renew their licenses early and to check their CFEC vessel registration stickers to make sure they are current.

The department also encourages permit holders to report observed violations to Wildlife Safeguard at 800-478-3377. Reports are anonymous and cash rewards may be paid for successful prosecution of violations.