

Division of Commercial Fisheries
Sam Rabung, Director

Kodiak Office
351 Research Court
Kodiak, Alaska 99615



Alaska Department of Fish and Game
Doug Vincent-Lang, Commissioner

PO Box 115526
Juneau, Alaska 99811
www.adfg.alaska.gov

Advisory Announcement

For Immediate Release: March 10, 2021

CONTACT: Andy Nault
BSAI Shellfish Research Biologist
(907) 486-1891

Sunken Acoustic Receiver Moorings in Kalsin Bay, Kodiak

As part of a study designed to learn about Tanner crab movements, the Alaska Department of Fish and Game, Commercial Fisheries Division, has deployed 23 sunken acoustic moorings in Kalsin Bay near Kodiak. The moorings are located in the deepest section of the bay, east of Kalsin and Queer Islands and west of Kalsin Reef (see attached map and coordinates). Commercial and subsistence fisherman should take note of the area of the moorings and use caution when setting gear in the vicinity of the moorings.

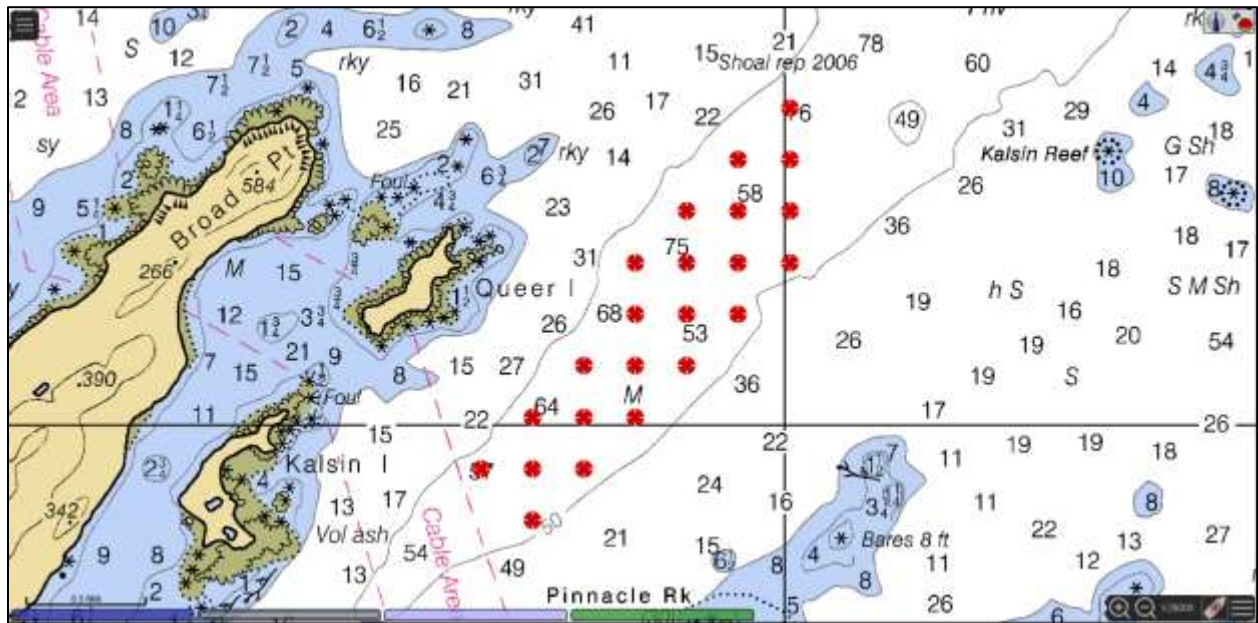
Moorings will be used to track movements of Tanner crab and will remain at depth until around June 1, 2021. Locations will not be visible from the surface and are provided here in an effort to minimize gear interactions with commercial and subsistence users.

Several acoustic-tagged Tanner crab (primarily sublegal-size crab) will be transiting the area of the moorings. If you capture a tagged Tanner crab, please return it to the water as soon as possible and note the tag number (see attached photo), location (latitude and longitude), and date. Please provide info on tagged crab to ADF&G.

For additional information, contact project biologist Andy Nault at (907) 486-1891.

COVID-19

Under Alaska's Health Advisories 1, 2, 3, and 4, commercial fishing is an Essential Business and is part of Alaska's Essential Services and Critical Infrastructure. Commercial fishermen should ensure that all travel and other activities in support of commercial fishing operations follow protocols in Alaska COVID-19 Health Advisories. COVID-19 Health Advisories may be found here: <https://covid19.alaska.gov/health-advisories/>



Mooring	Degrees Decimal Minutes		Degrees Minutes Seconds	
	Latitude	Longitude	Latitude	Longitude
1	57° 39.61' N	152° 21.97' W	57° 39' 36.4" N	152° 21' 58.3" W
2	57° 39.82' N	152° 22.37' W	57° 39' 49.3" N	152° 22' 22.4" W
3	57° 39.82' N	152° 21.97' W	57° 39' 49.3" N	152° 21' 58.3" W
4	57° 39.82' N	152° 21.57' W	57° 39' 49.3" N	152° 21' 34.2" W
5	57° 40.04' N	152° 21.97' W	57° 40' 02.3" N	152° 21' 58.3" W
6	57° 40.04' N	152° 21.57' W	57° 40' 02.3" N	152° 21' 34.2" W
7	57° 40.04' N	152° 21.17' W	57° 40' 02.3" N	152° 21' 10.1" W
8	57° 40.25' N	152° 21.57' W	57° 40' 15.2" N	152° 21' 34.2" W
9	57° 40.25' N	152° 21.17' W	57° 40' 15.2" N	152° 21' 10.1" W
10	57° 40.25' N	152° 20.76' W	57° 40' 15.2" N	152° 20' 45.6" W
11	57° 40.47' N	152° 21.17' W	57° 40' 28.2" N	152° 21' 10.1" W
12	57° 40.47' N	152° 20.76' W	57° 40' 28.2" N	152° 20' 45.6" W
13	57° 40.47' N	152° 20.36' W	57° 40' 28.2" N	152° 20' 21.5" W
14	57° 40.69' N	152° 21.16' W	57° 40' 41.2" N	152° 21' 09.7" W
15	57° 40.69' N	152° 20.76' W	57° 40' 41.2" N	152° 20' 45.6" W
16	57° 40.69' N	152° 20.36' W	57° 40' 41.2" N	152° 20' 21.5" W
17	57° 40.69' N	152° 19.96' W	57° 40' 41.2" N	152° 19' 57.4" W
18	57° 40.90' N	152° 20.76' W	57° 40' 53.8" N	152° 20' 45.6" W
19	57° 40.90' N	152° 20.36' W	57° 40' 53.8" N	152° 20' 21.5" W
20	57° 40.90' N	152° 19.96' W	57° 40' 53.8" N	152° 19' 57.4" W
21	57° 41.11' N	152° 20.36' W	57° 41' 06.7" N	152° 20' 21.5" W
22	57° 41.11' N	152° 19.96' W	57° 41' 06.7" N	152° 19' 57.4" W
23	57° 41.33' N	152° 19.96' W	57° 41' 19.7" N	152° 19' 57.4" W

