

Division of Commercial Fisheries
Sam Rabung, Director

Kodiak Office
351 Research Court
Kodiak, Alaska 99615



Alaska Department of Fish and Game
Doug Vincent-Lang, Commissioner

PO Box 115526
Juneau, Alaska 99811
www.adfg.alaska.gov

Advisory Announcement

For Immediate Release: February 10, 2021

CONTACT: Andy Nault
BSAI Shellfish Research Biologist
(907) 486-1891

Sunken Acoustic Receiver Moorings in Kalsin Bay, Kodiak

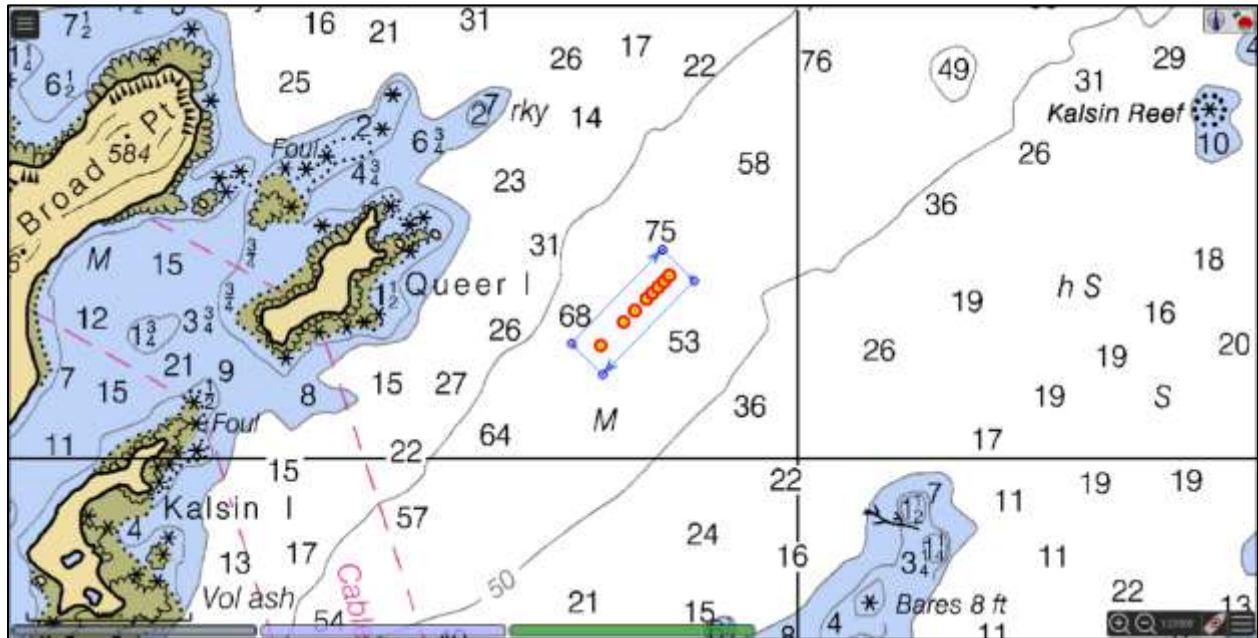
As part of a study designed to learn about Tanner crab movements, the Alaska Department of Fish and Game, Commercial Fisheries Division, has deployed 8 sunken acoustic moorings in Kalsin Bay near Kodiak. The moorings are located in the deepest section of the bay, just east of Queer Island (see attached map and coordinates). Commercial and subsistence fisherman should take note of the area of the moorings and use caution when setting gear in the vicinity of the moorings.

Moorings will be used to estimate the detection range of acoustic telemetry equipment and will remain at depth until around March 1, 2021. Locations will not be visible from the surface and are provided here in an effort to minimize gear interactions with commercial and subsistence users. Additional moorings will be deployed in March 2021 with locations and details of project site provided in a subsequent advisory announcement.

For additional information, contact project biologist Andy Nault at (907) 486-1891.

COVID-19

Under Alaska's Health Orders 5, 6, and 8, commercial fishing is an Essential Business and is part of Alaska's Essential Services and Critical Infrastructure. Commercial fishermen should ensure that all travel and other activities in support of commercial fishing operations follow protocols in Alaska COVID-19 Health Orders. COVID-19 Health Orders may be found here: <https://covid19.alaska.gov/health-order/>



Mooring	Decimal Degrees		Degrees Decimal Minutes		Degrees Minutes Seconds	
	Latitude	Longitude	Latitude	Longitude	Latitude	Longitude
1	57.6729	-152.3536	57° 40.376' N	152° 21.213' W	57° 40' 22.59" N	152° 21' 12.78" W
2	57.6742	-152.3512	57° 40.453' N	152° 21.071' W	57° 40' 27.16" N	152° 21' 04.25" W
3	57.6748	-152.3500	57° 40.491' N	152° 21.000' W	57° 40' 29.45" N	152° 20' 59.98" W
4	57.6755	-152.3488	57° 40.529' N	152° 20.929' W	57° 40' 31.73" N	152° 20' 55.72" W
5	57.6758	-152.3482	57° 40.548' N	152° 20.893' W	57° 40' 32.88" N	152° 20' 53.58" W
6	57.6761	-152.3476	57° 40.567' N	152° 20.858' W	57° 40' 34.02" N	152° 20' 51.45" W
7	57.6764	-152.3470	57° 40.586' N	152° 20.822' W	57° 40' 35.16" N	152° 20' 49.32" W
8	57.6768	-152.3464	57° 40.605' N	152° 20.786' W	57° 40' 36.30" N	152° 20' 47.18" W