

---

# ALASKA DEPARTMENT OF FISH AND GAME

## DIVISION OF COMMERCIAL FISHERIES

### NEWS RELEASE



*Douglas Vincent-Lang, Commissioner*  
*Sam Rabung, Director*



---

**Contacts:**

Joe Stratman

Adam Messmer

Phone: (907) 772-5238

Fax: (907) 772-9336

(907) 465-4853

(907) 465-4944

Petersburg Area Office

P.O. Box 667

Petersburg, Alaska 99833

Date: February 7, 2019

Time: 11:00 a.m.

---

### SOUTHEAST ALASKA COMMERCIAL TANNER CRAB FISHING SEASON ANNOUNCEMENT CORRECTION

Petersburg . . . The 2018/2019 Tanner crab fishery news release dated December 21, 2018, had a map showing open and closed areas within Glacier Bay National Park. The map was intended for general reference only, however there were some slight discrepancies with open and closed area boundaries. **The map in this news release more clearly shows open and closed areas within Glacier Bay National Park.** For more information on fishing in Glacier Bay proper, including detailed latitudes and longitudes of open and closed areas, and permits required for fishermen and buyers, contact the National Park Service at (907) 697-2230.

News releases web site: <http://www.adfg.alaska.gov/index.cfm?adfg=cfnews.main>.

Office	Ketchikan	Petersburg	Wrangell	Sitka	Juneau	Haines	Hoonah	Yakutat
ADF&G	225-5195	772-3801	874-3822	747-6688	465-4250	766-2830		784-3255
AWT	225-5118	772-3983	874-3215	747-3254	465-4000	766-2533	945-3620	784-3255

# Commercial Tanner Crab Management Core, Noncore, Exploratory, and Closed Areas of Registration Area A

Refer to 5AAC 35.113 for Legal Descriptions

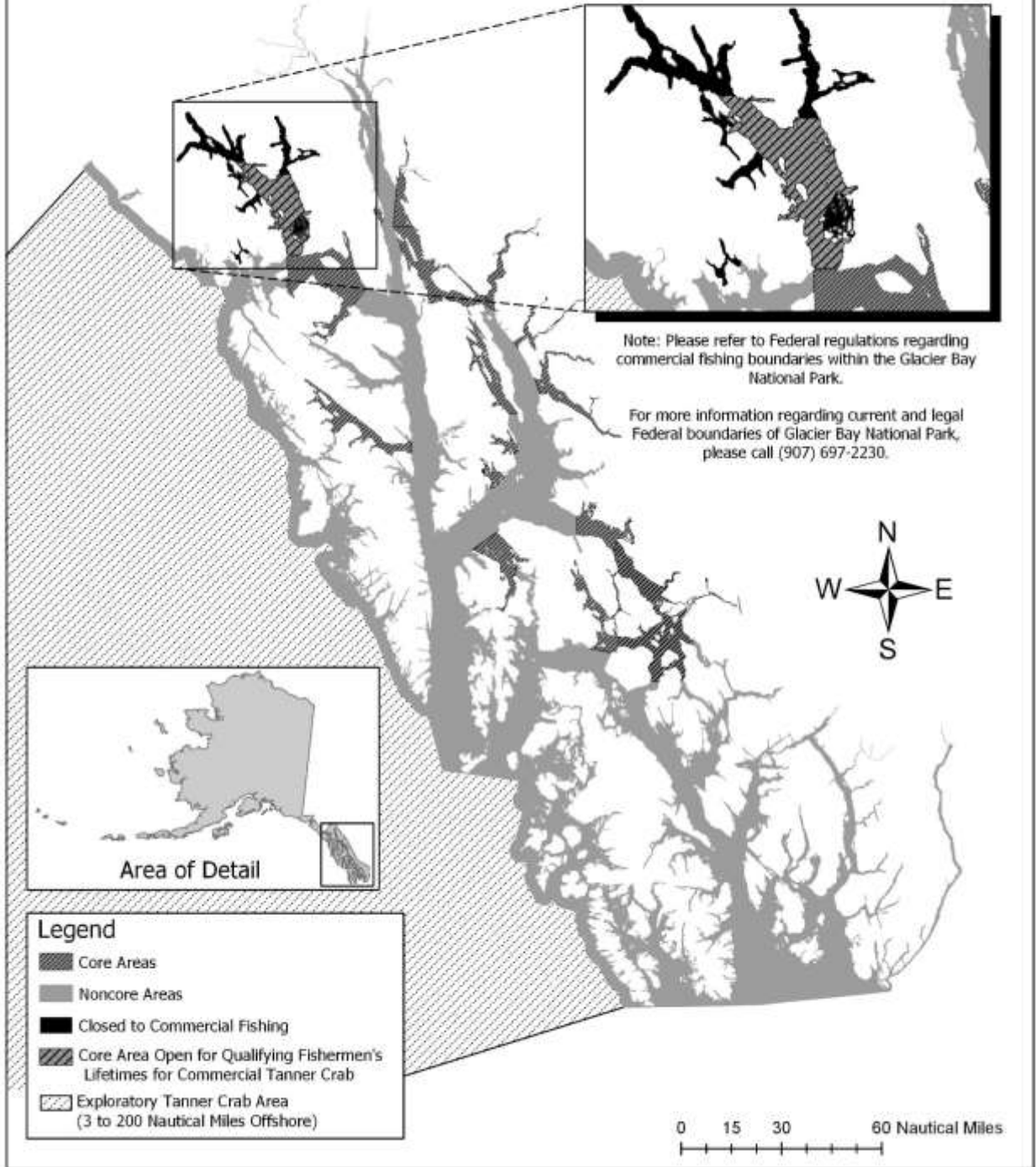


Figure 1: Management areas for the 2018/2019 Tanner crab commercial season in Southeast Alaska. This map is intended for general reference only. Please refer to 5 AAC 35.113 or the news release dated December 21, 2018, for legal descriptions of management area boundaries.