

Board of Game

February 2015

Palmer Area Overview

RC 2, Tab 7



Palmer Area Staff

Todd Rinaldi – Area Biologist

Tim Peltier - Asst. Area Biologist

Will Newberry – Wildlife Technician

Chris Anderson – Wildlife Technician

Leigh Honig – Project Assistant

Palmer Area Office

- **Wildlife management of Units 14A, 14B, 16A, and 16B**
- **High Development in the Matanuska-Susitna Valley**
- **Predator populations and control activities require a significant amount of staff time.**
- **High public service, front office, and sealing demand**
- **Vehicle collisions with moose on road and railroad represent a public safety concern.**

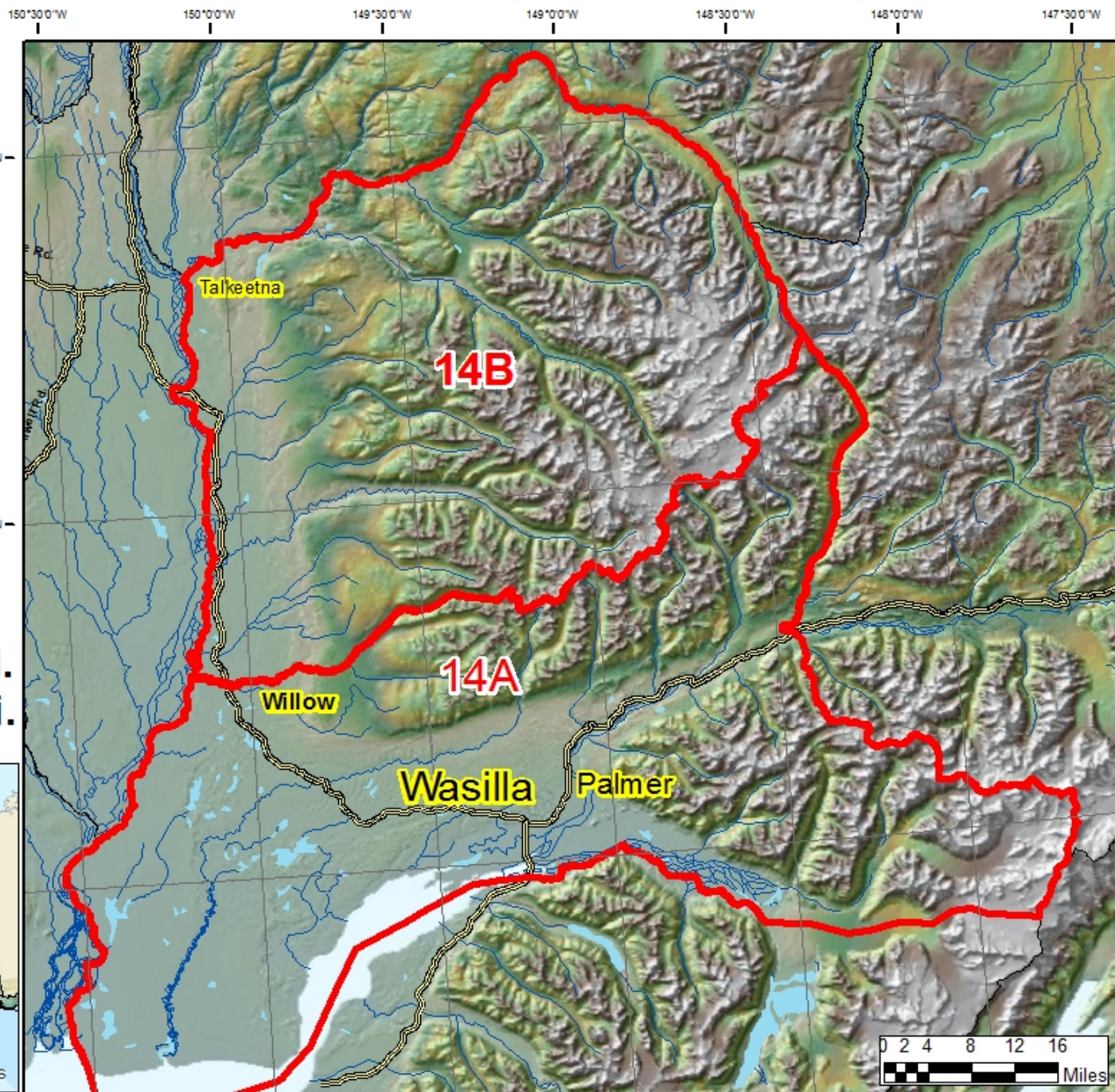
Game Management Units 14A & B



Legend

- Unit 14 Boundries
- Roads
- Lakes
- Rivers

14A - 2,561sq. mi.
14B - 2,152sq. mi.



Game Management Units

16A & B

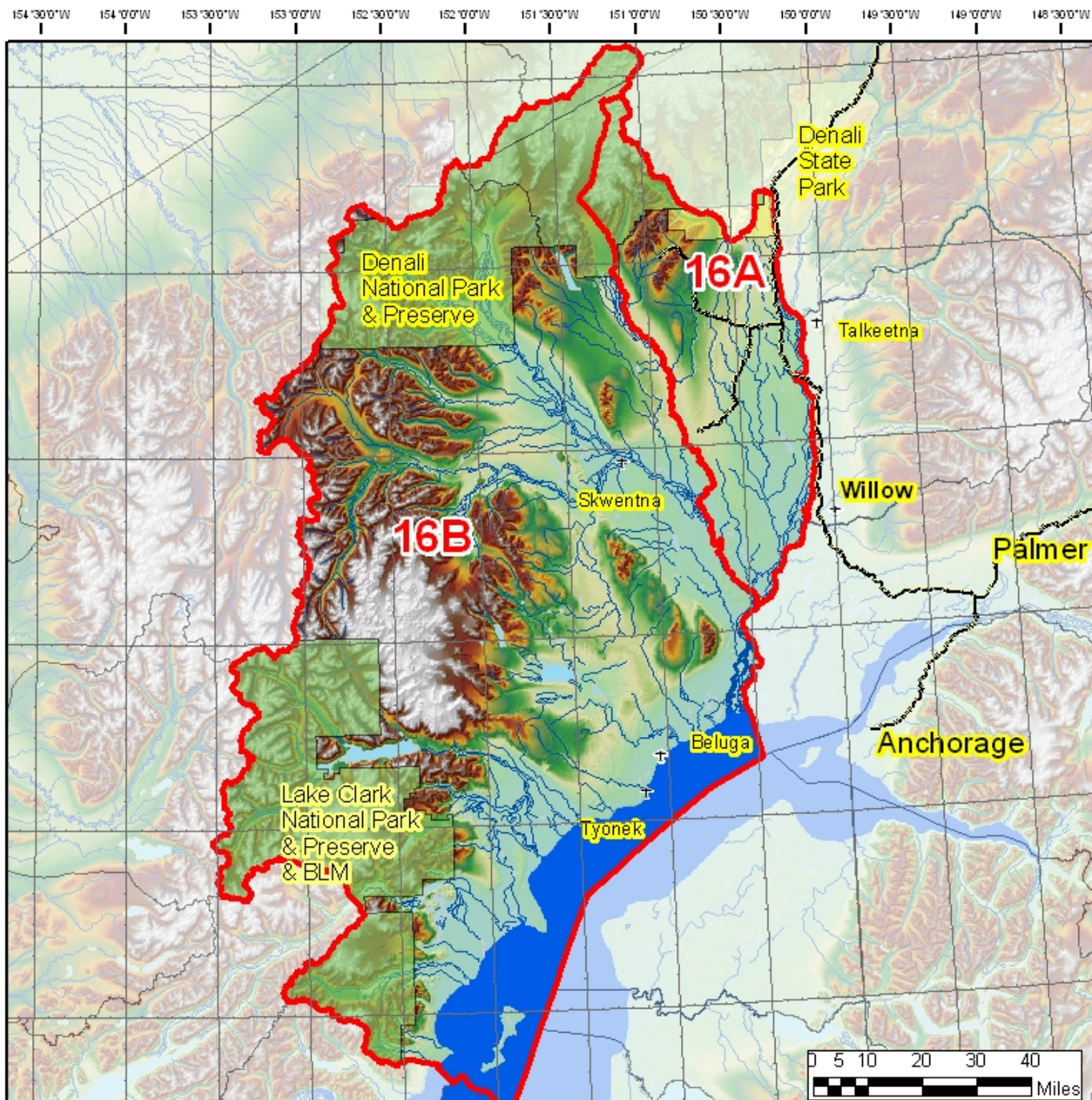


Legend

- Game Management Units
- Denali National Park
- Denali State Park
- Lake Clark National Park
- Lakes
- Rivers
- Roads

16 A = 1,850 sq mi

16B = 10,405 sq mi



Moose



- 3 of 4 Units are at or above the population objective
- Bull to cow ratios are very good in all units except 14A.
- Harvest below objective in all units except 14A
- Moose mortality from vehicle & train collisions averages 320 annually

Proposals: 96, 97, 98, & 101

Dall Sheep

- **Unit 14A Chugach - Stable**
 - Draw hunt (Any Ram)
- **Units 14A & 14B Talkeetna – Stable**
 - General Season (Full Curl)
- **Alaska Range population low – Possibly increasing?**
 - General Season (Full Curl)



Proposals: 106 & 107

Mountain Goat



- **Unit 14A and 14B Talkeetna Population: (≤ 50)**
 - No hunting season

- **Chugach Population: Stable**
 - Draw and registration hunts

No Proposals

Caribou

16B Rainy Pass Herd

- General Season (1 Bull)



14B Western Talkeetna Population

- Ongoing population study
- DC590 Draw Permit (1 caribou)

No Proposals

Black Bear



- **Stable in Units 14A & 14B**
- **Estimated 3,600 to 4,300 in Unit 16**
- **Unit 16 Black Bear Control on going since 2007**

Proposals: 100 & 102

Brown Bear



- **Stable in Units 14A and 14B**
- **Estimated 625 to 1250 in Unit 16B**
- **Increased harvest opportunities in Unit 16B**
- **Few nuisance bear complaints near communities**

Proposals: 100, 101, & 102

Wolf



- Unit 14A & 14B harvest indicates stable population
- SDA Wolf Control in Unit 16B from 2004
- SDA Wolf Control Area expanded to include portions of Unit 16A in Spring 2006

Proposal: 101



Furbearers



Species	Abundance	Change
Beaver	Common	None
Coyote	Common	None
Ermine	Common	None
Lynx	Scarce	Decreasing
Marten	Scarce	Decreasing
Mink	Scarce	None
Muskrat	Scarce	None
Red Fox	Common	None
River Otter	Common	None
Wolf	Scarce	None
Wolverine	Scarce	None

2012-2013 Trapper Questionnaire

Proposal 104

Intensive Management of Moose in Unit 16



Proposal 101



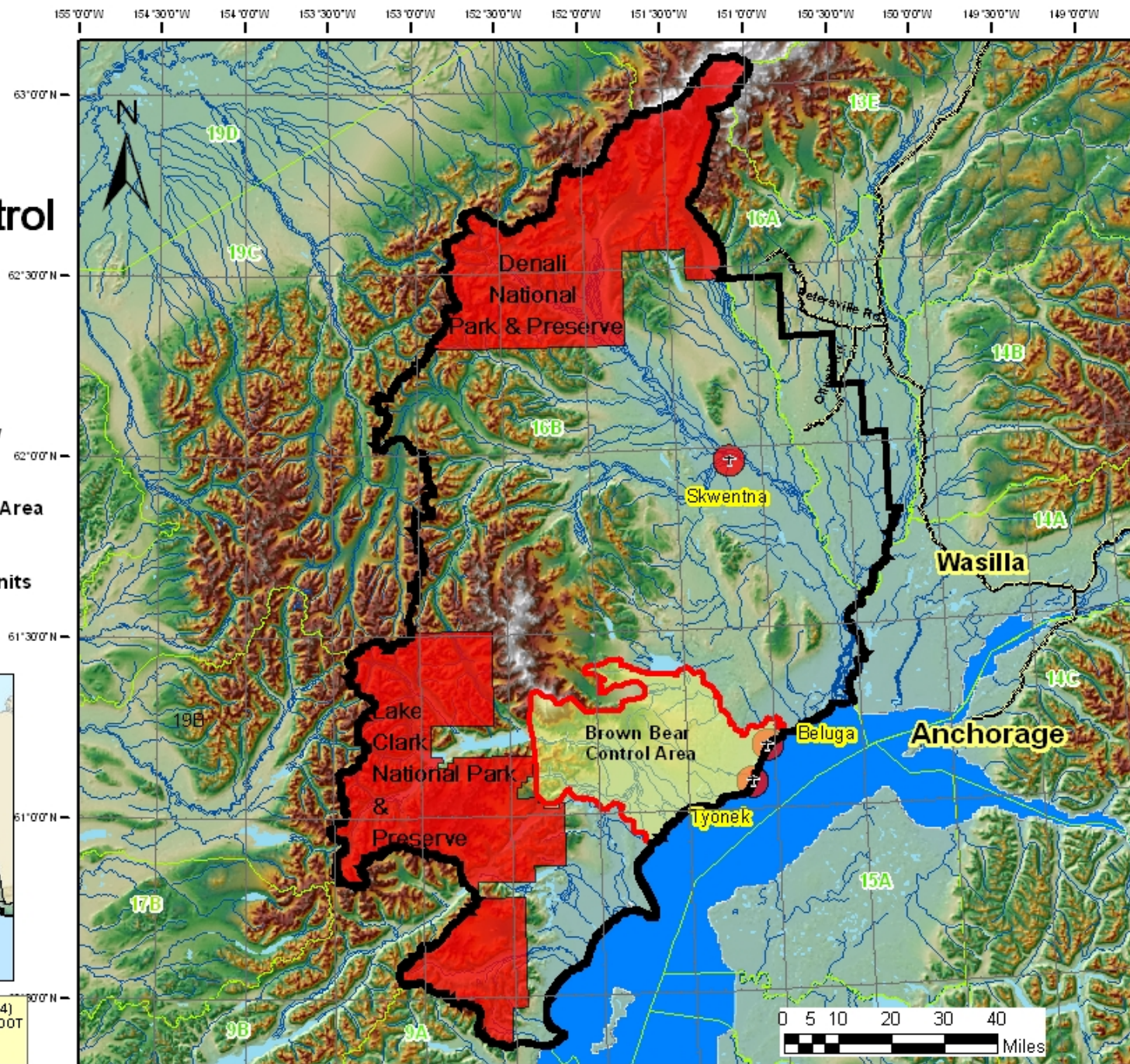
Predator Control Areas GMU 16

Legend

- Unit 16 PCA boundary
- Roads
- Brown Bear Removal Area
- Land closed to SDA
- Game Management Units
- Lakes
- Rivers



Map Projection: Alaska Albers Nad83 (WG 84)
Data Sources: ADFG, USGS, BLM, AK DNR, DOT
Alaska Department of Fish & Game
Date: January 14, 2013



Intensive Management Objectives for Wolves In Unit 16B

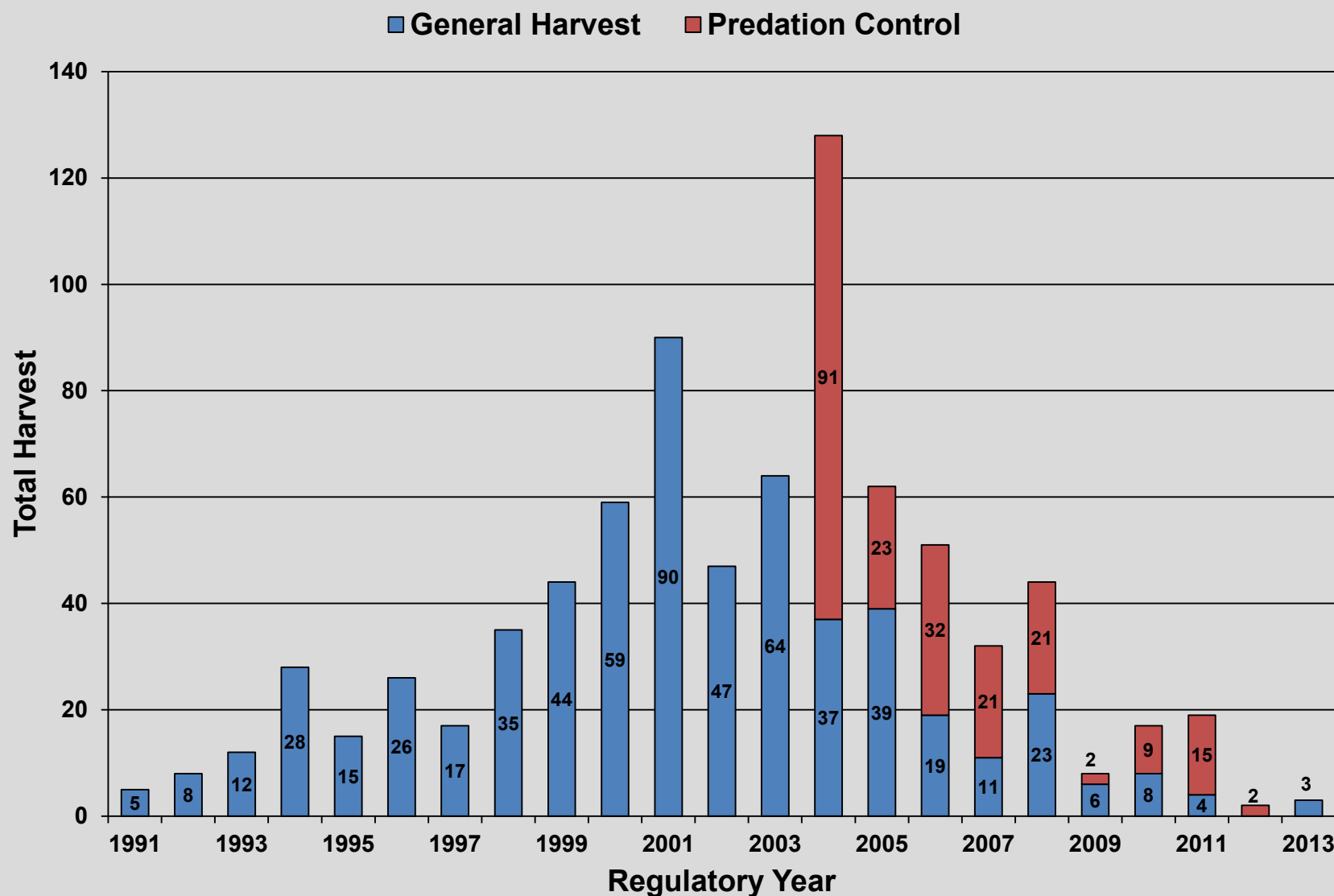
- Reduce the spring wolf population to 35 – 55 wolves

Wolf Population Estimates

- 2003 estimate: 175-180 wolves
- 2013 preliminary estimate 28-41



Harvest of Wolves in Unit 16 by Permit Type, 1991- 2013



Black Bear IM Population Objective

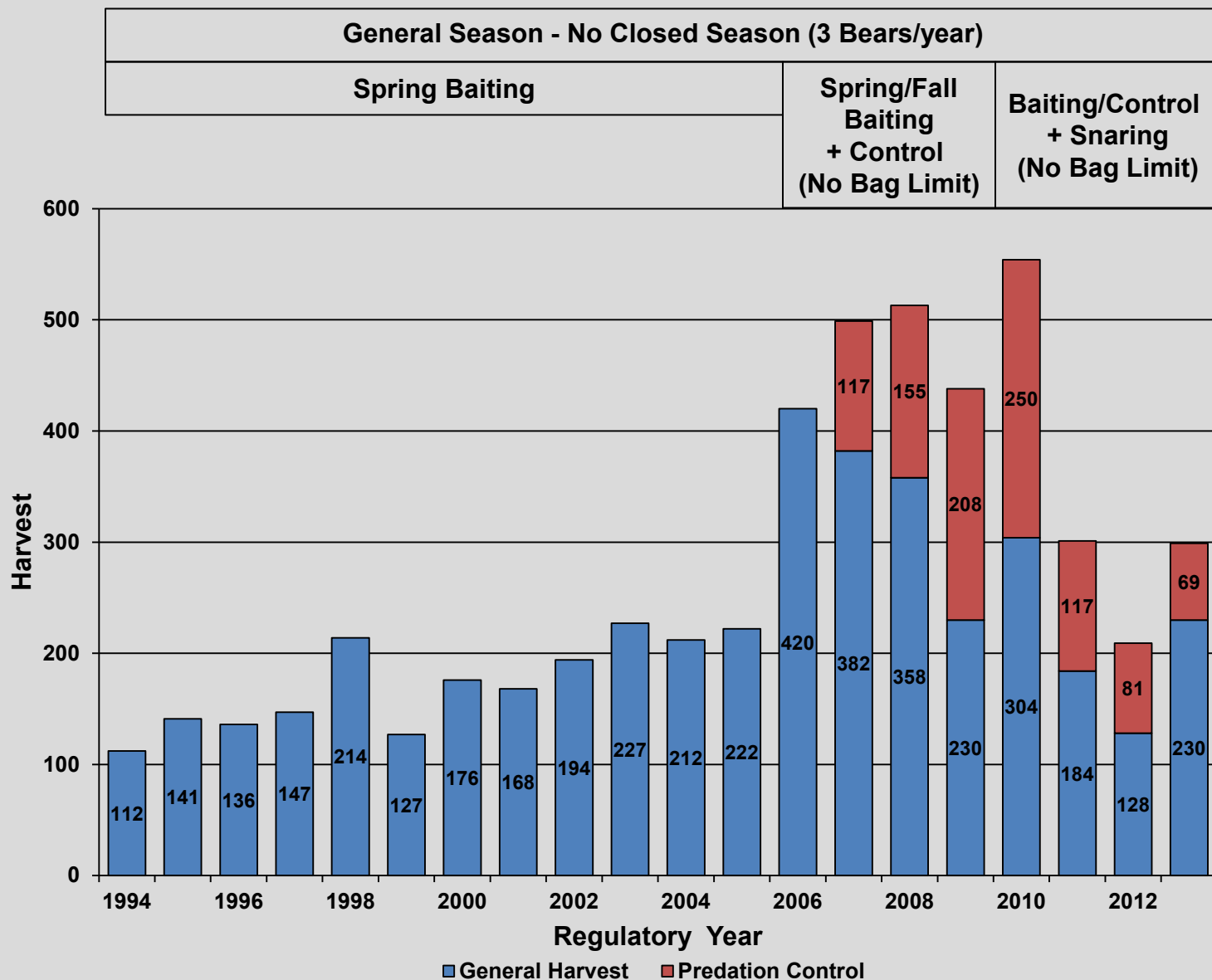
- Reduce the population by 80% to 700 bears

Current Population Estimate:

16B: 3,200 – 3,800



Unit 16 Black Bear Harvest by Permit Type, 1994 - 2013



Brown Bear IM Population Objective

- Reduce the population by 60% to 375 bears

Current Population Estimate:

16B: 625 – 1,250

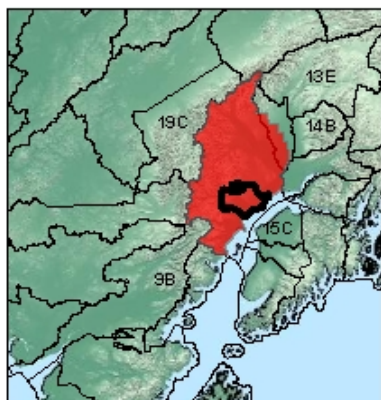




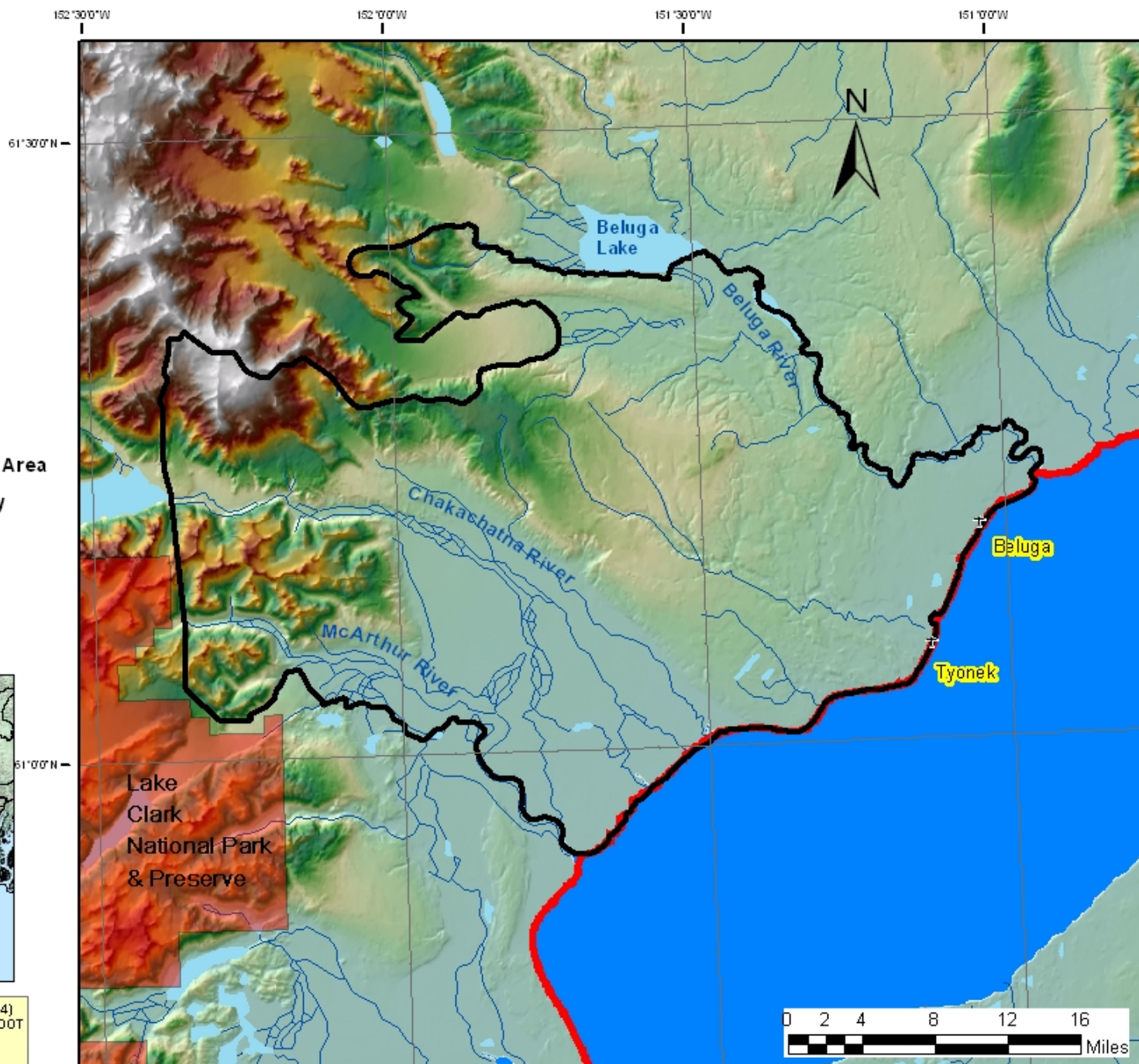
Brown Bear Control Area GMU 16

Legend

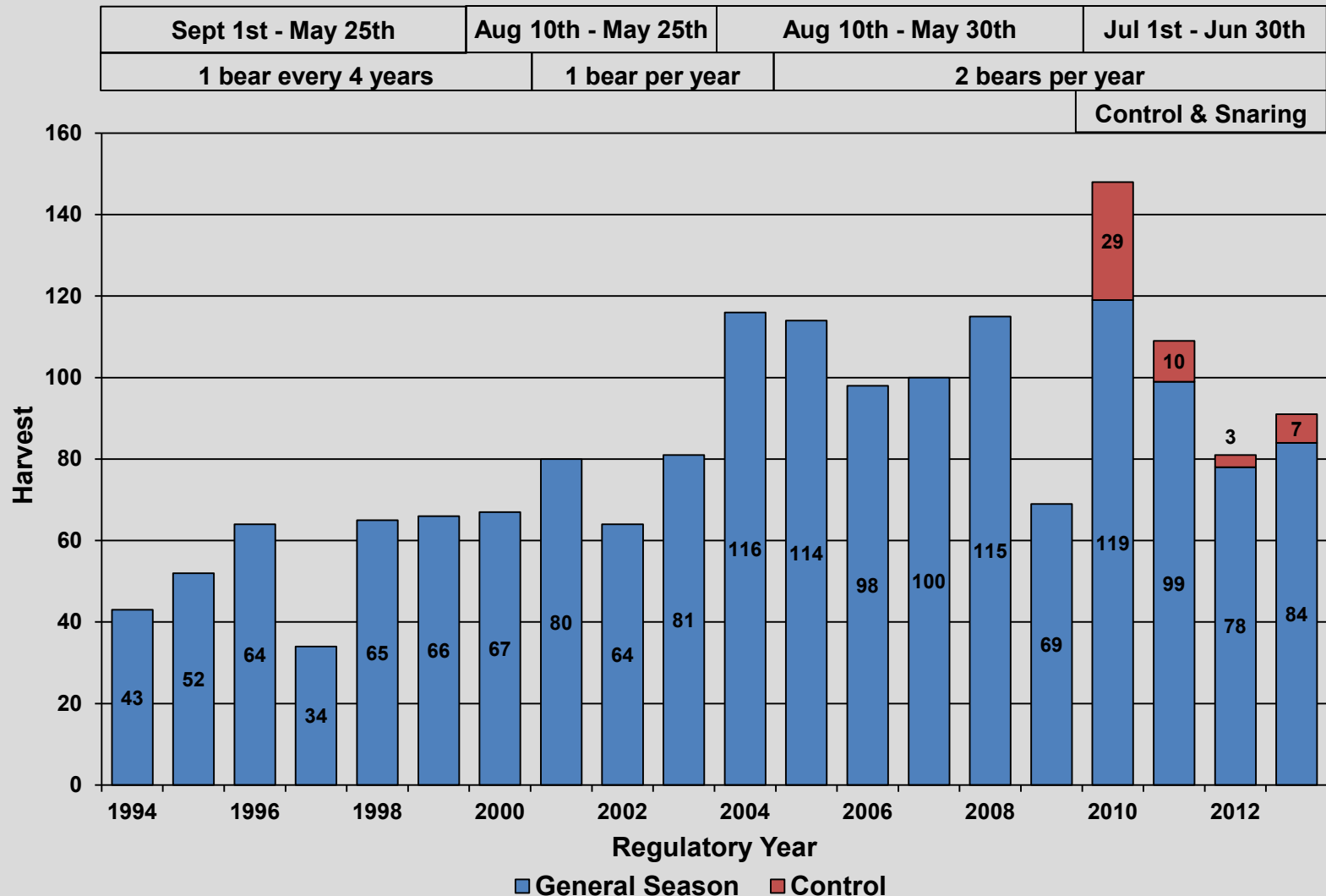
- Brown Bear Removal Area
- Unit 16 PCA boundary
- Closed Federal Land
- Lakes
- Rivers



Map Projection: Alaska Albers NAD83 (WG84)
Data Sources: ADFG, USGS, BLM, AK DNR, DOT
Alaska Department of Fish & Game
Date: January 14, 2013



Unit 16 Brown Bear Harvest by Permit Type, 1994-2013



Moose Population Status

Estimate: 7,400

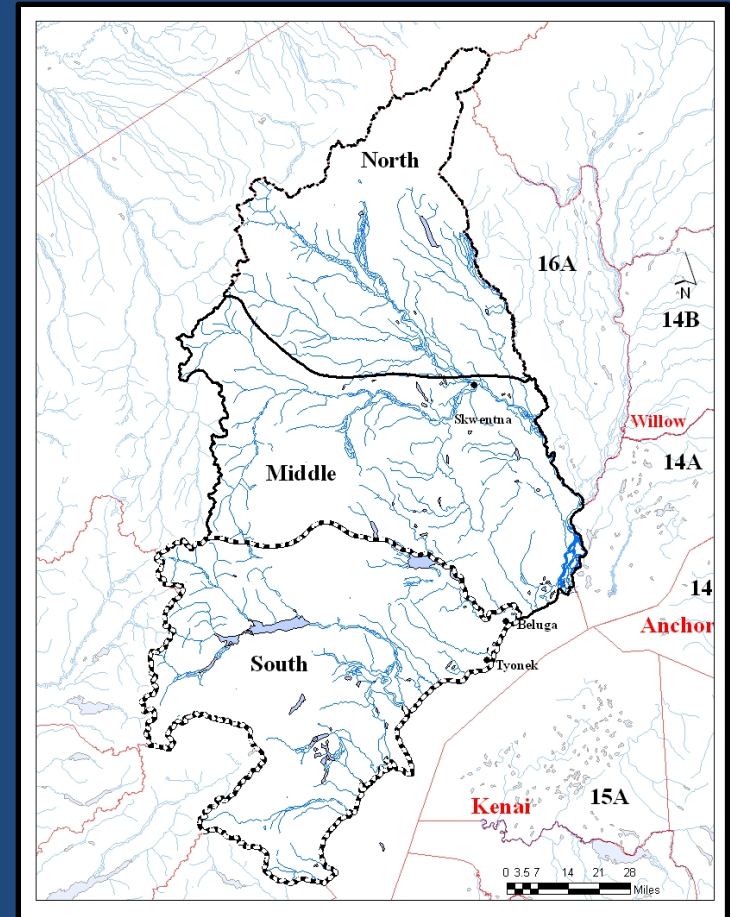
Calf/100 Cows: 25

Bull/100 Cows: 50

Harvest Objective: 310-600

2013 Harvest: 271*

Sustainable Harvest: 600-700



Moose Population Estimates by Assessment Area

Survey Unit	IM Population Objective proportional to area (midpoint)	2014 Moose Population Estimate	Percent Recovery to Objective Midpoint
16B-North	1,820-2,100 (1,960)	1,587	81%
16B-Middle	3,120-3,600 (3,360)	3,458	103%
16B-South	1,560-1,800 (1,680)	2,372	141%
Unit 16B	6,500-7,500 (7,000)	7,418	106%

