

Kuskokwim River Salmon Management Working Group

1 (800) 315-6338 (MEET) Code: 58756# (KUSKO)

ADF&G Bethel toll free: 1 (855) 933-2433

Information Packet

July 27, 2012

LOWER KUSKOKWIM RIVER INSEASON REPORTS:

Orutsararmiut Native Council (ONC)

Kuskokwim River Inseason Subsistence Catch Monitoring Report

Date July 15, 2011

Fishing reports from July 10 – July 14, 2011.

Families Surveyed	Families Fishing	Using Driftnets	Using Setnets	Both	Gillnets More than 6" mesh	Gillnets 6" mesh or less	Both	Rod & Reel
67	31	20	3	8	25	2	3	1

Compared with this time in a normal year, how are catch rates for salmon this week?

Chinook			Chum			Sockeye		
Very Good	Normal	Poor	Very Good	Normal	Poor	Very Good	Normal	Poor
0	8	23	18	8	5	11	11	9

Does the salmon run appear to be running early, late, or normal?

Chinook			Chum			Sockeye		
Early	Normal	Late	Early	Normal	Late	Early	Normal	Late
0	9	20	0	22	8	0	16	15

Comments: For the week of July 15th the ONC Subsistence crew worked hard to obtain final subsistence reports from all families interviewed this year, and had much success. There was a concern for low Sockeye catch rates on Steamboat Slough, where in previous years the run strength would be at its strongest peak this week. Families who mainly rely on sockeye to obtain harvest goals though Steamboat Slough gave a suggestion to ask ADF&G to investigate the possibility of a leakage in the barges that would prevent sockeye from running through the slough. As for our families, many of them had reported successfully reaching subsistence needs by utilizing chum and sockeye, but there were no reports of Chinook harvest goals being met.

67 families were surveyed this week for the inseason subsistence monitoring program. 31(46%) of the families were fishing this week. 2 out of the 31 families this week reported having to borrow nets from friends or family members. 6 (8%) families said they did not fish this week or will not be subsistence fishing this year. 30 (44%) of the families reported that they were done fishing. Three families lost salmon due to spoilage from the wet weather and 9 families were smoking the last of their drying racks

while waiting for the Coho run. We also had reports of 2 families that had mainly used Bethel Test Fish to obtain their harvest goals this year.

Out of the 31 families fishing, 20 (64%) families reported using drift nets. 3 (9%) family reported using set nets. 8 (25%) family reported using both. 1 (3%) family reported starting to go rod and reel fishing for freezer fish. 2 (40%) families fishing used gill nets greater than 6-inch mesh. 25 (80%) families reported using 6-inch mesh or less. 3 (9%) families reported using both. 1 (3%) family reported using rod and reel with no success.

Chinook:

Catch rate: Of the 31 families fishing this week, 0 families reported the Chinook catch as very good, 8 (25%) families reported the catch as normal, 23 (74%) families reported it as poor. Chinook catches slowed down to completely zero at the end of this week's survey.

Run timing: 0 families reported the run as early, 9 (29%) families reported the run timing as normal for this time of year, and 20 (64%) families reported the run to be late overall this year. 2 (6%) families did not comment on run timing for this week.

Harvest Goals: 0 families interviewed this week reported meeting harvest goals. All of our families interviewed reported being done fishing for Chinook and did not meet their harvest goals for Chinook this year. Half of our current fishing families are still trying to make up for the Chinook harvests by targeting Coho, because they are more similar to Chinook than chum or sockeye.

Chum:

Catch Rate: Of the 31 families fishing this week, 18 (58%) families reported their catch rates as good. 8 (25%) of the families reported their catches as normal. 5 (16%) families reported their chum catches as poor. It should be noted that at the beginning of this week's survey reports of the families who practice one-minute drifts were only catching average of 2 or were skunked completely. Compared to last year's one-minute drifts by this time of the week, people's nets were overwhelming with Chum. Then toward the end of this weeks' survey those same families reported an unusual high spike in spawning colored chum.

Run timing: 0 families reported the run return as early. 22 (70%) families reported the salmon run timing as normal. 8 (25%) families reported the run to be late. 1 (3%) family was not able to comment.

Harvest Goals: All families interviewed this year met their needs subsistence needs for chum, except the few families that lost their fish to spoilage due to wet weather conditions.

Sockeye:

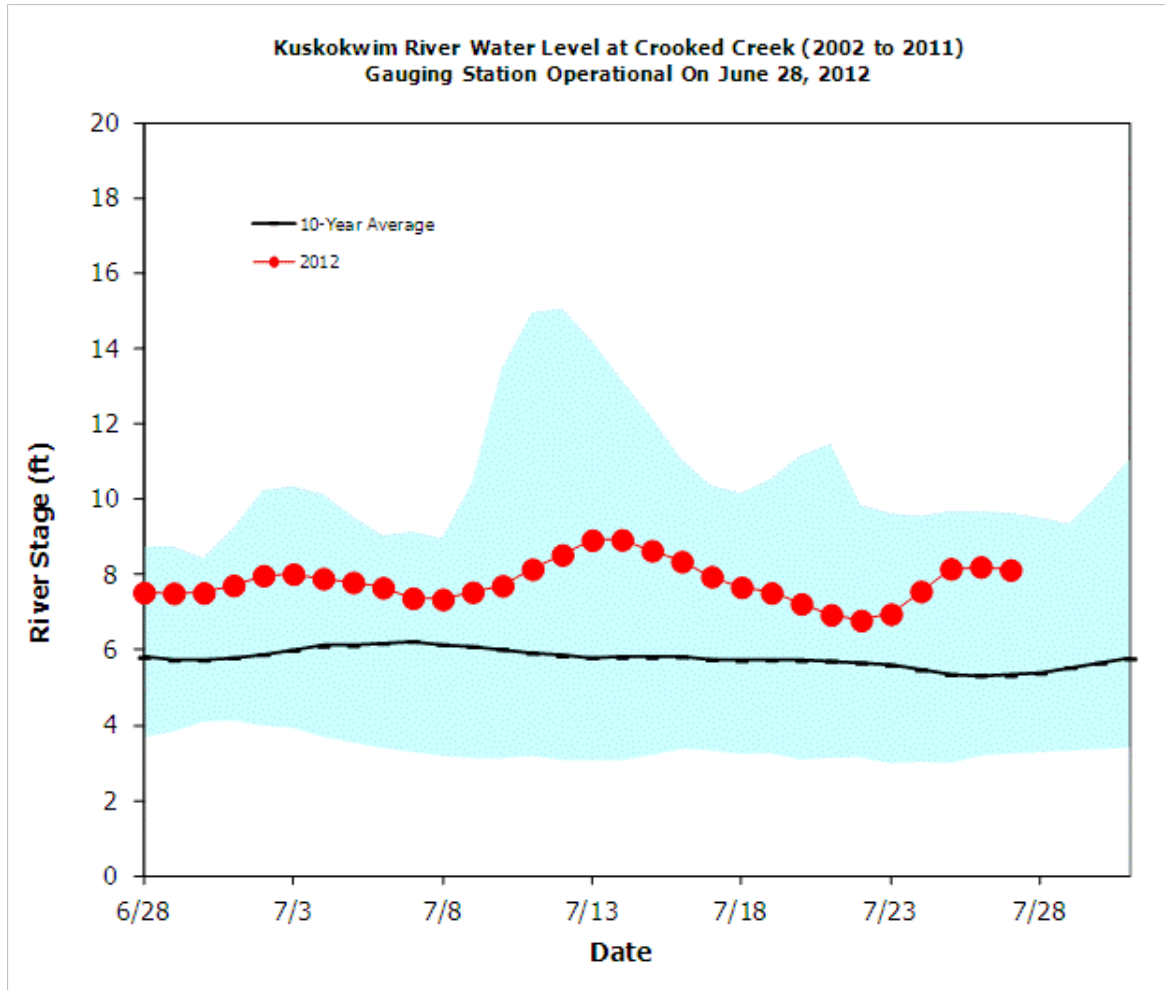
Catch Rate: Of the 31 families fishing this week, 11 (35%) families reported good catch rates. 11 (35 %) families reported their catches as normal. 9 (29%) families reported their sockeye catches as poor. Many fishers reported that sockeye catch rated decreased about the same time as chum catch rates, and neither improved for the rest of the week.

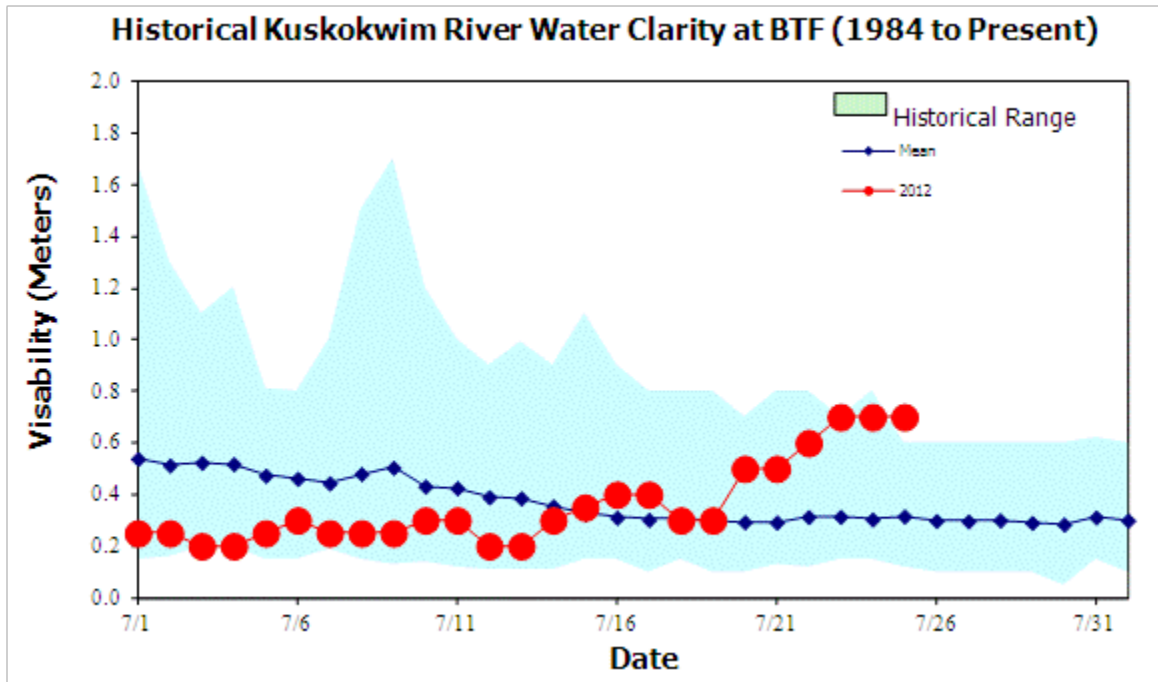
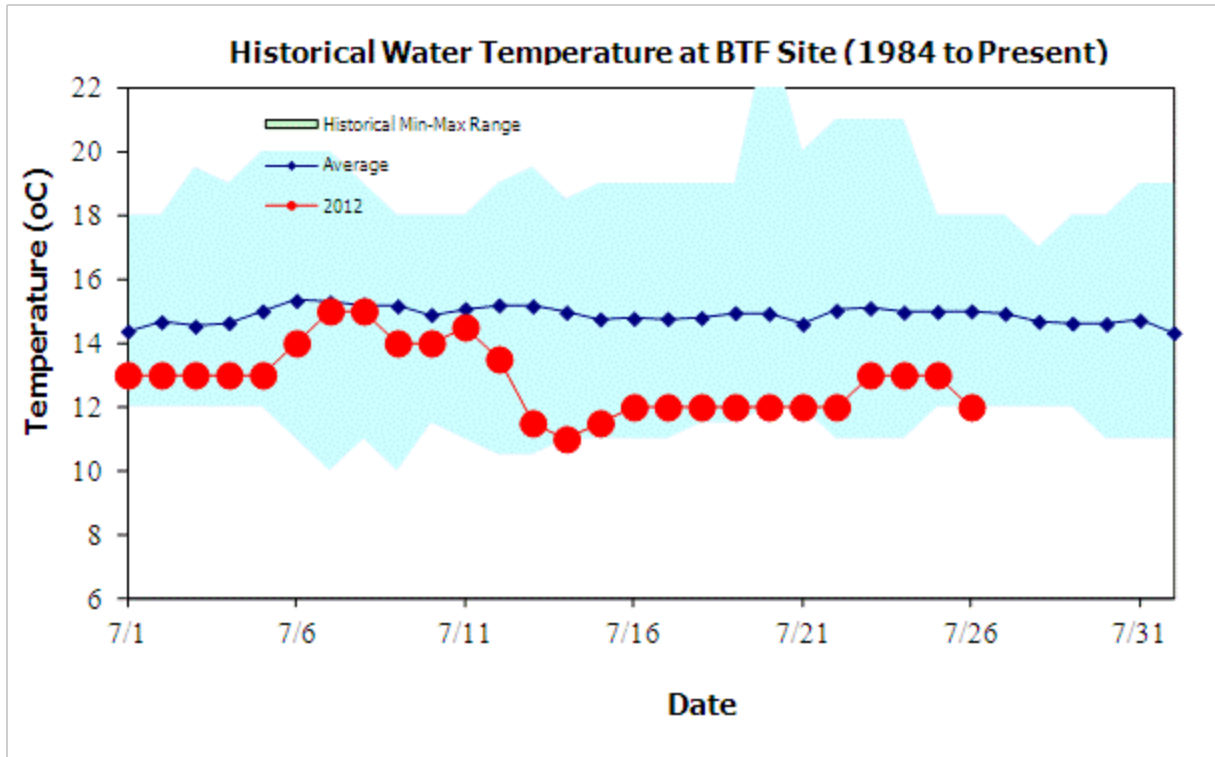
Run timing: 0 families reported the run return as early. 16 (51%) families reported run timing as normal. 15 (49%) families reported the run to be late compared to previous years.

Harvest Goals: All of our families reported being happy with the amount of sockeye that they had caught this year, but hoped for a little bit more sockeye to make up for less Chinook harvests. Overall, this year's sockeye run has been reported to be looking healthier and larger in size than previous years. A few of our families also reported that the eggs appeared to be larger in size like Chinook eggs, possibility because they were headed to nearby tributaries to spawn.

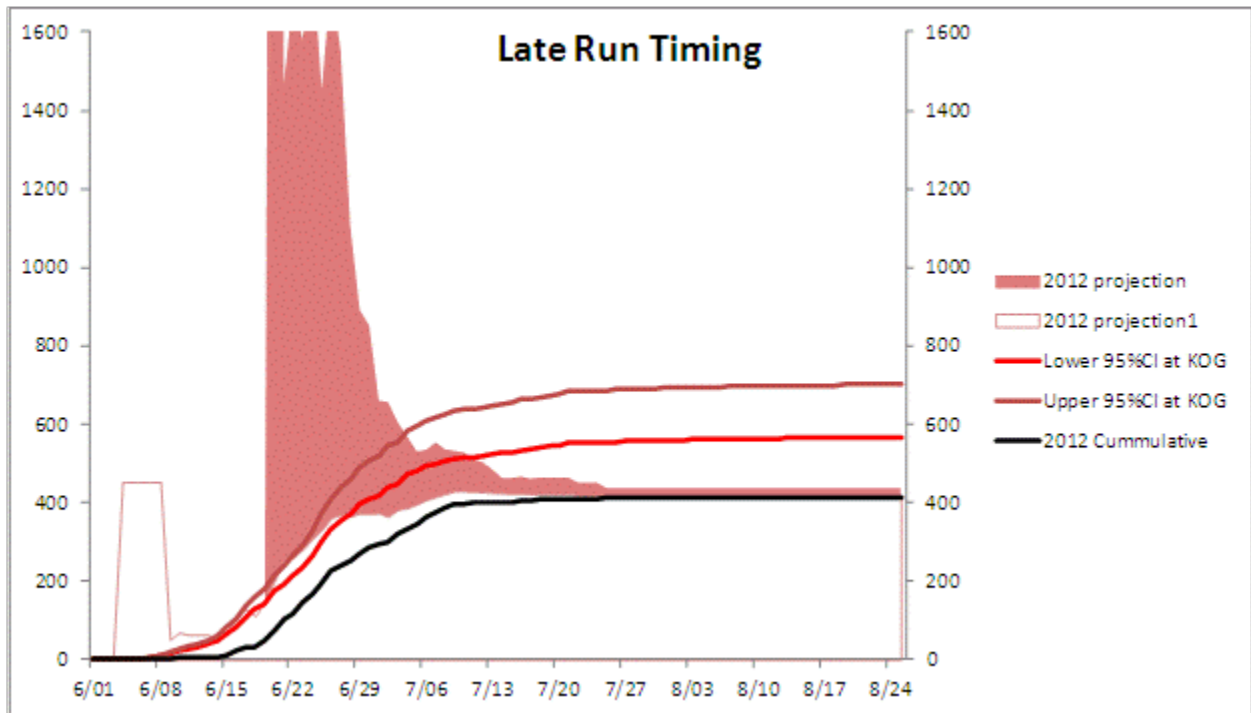
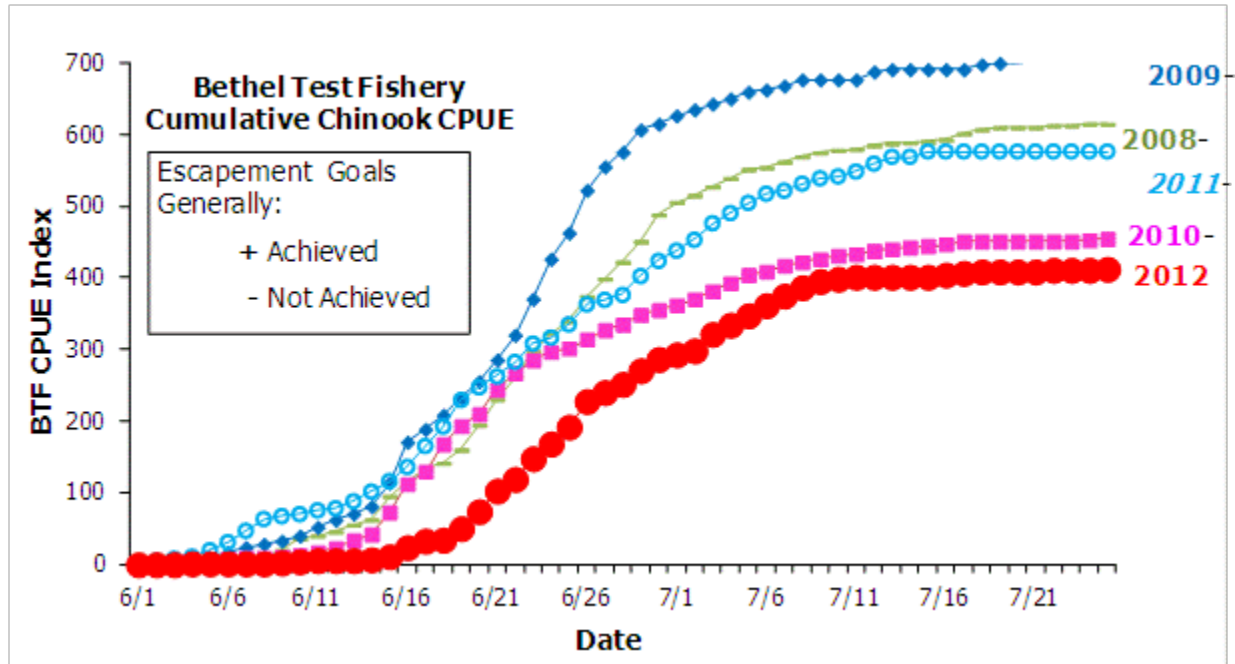
Coho: For this week's survey reports, there has been some Coho that have been caught, but not as much as last year. Our families reported that they usually start arriving around this time of the year. They hoped to see a higher catch rate later in the week, but believe the run timing to be late. Some of our families who subsistence rod and reel usually catch a few Coho by now, but they have reported zero success and zero sign of coho activity in usual fishing grounds. Many of our families will be utilizing Coho to make up for the loss in Chinook harvest this year, and other families are going to stick with their usual harvest amounts for freezing and jarring.

OVERVIEW OF KUSKOKWIM RIVER SALMON RUN ASSSSMENT PROJECTS





Chinook Salmon Cumulative CPUE Index, Bethel Test Fishery

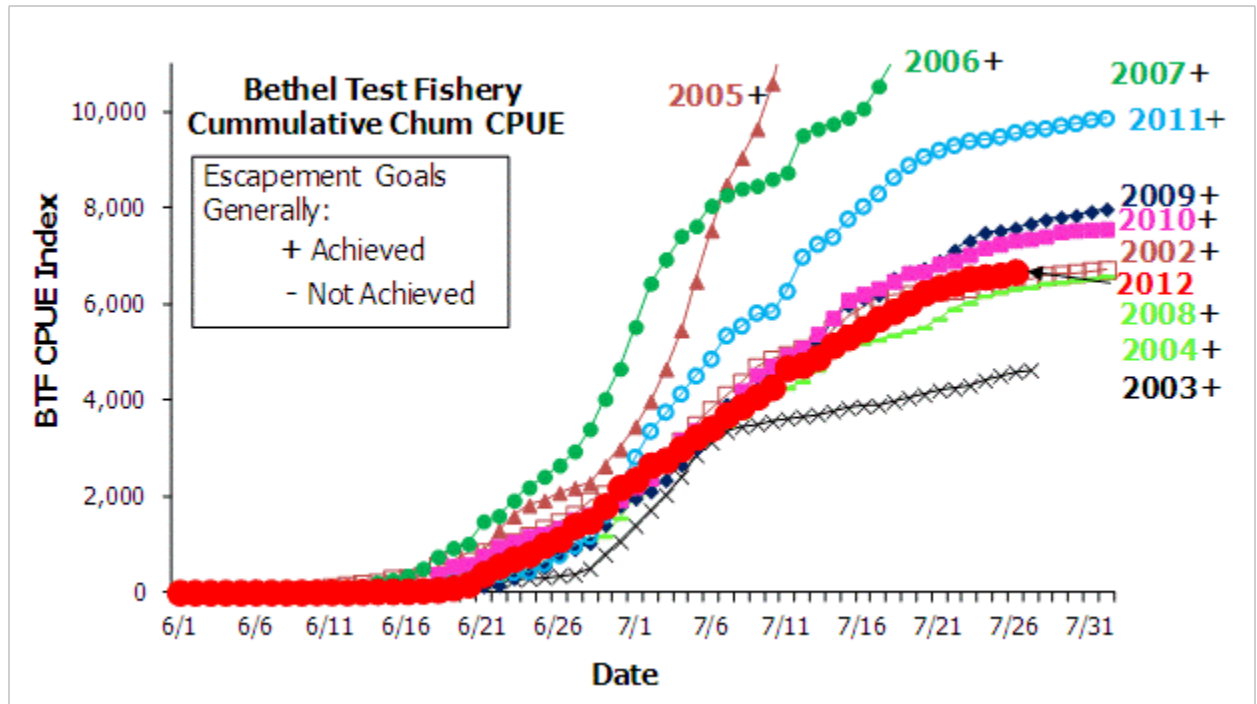


**Bethel Test Fishery
Chinook Salmon Cumulative CPUE Index
(UNCORRECTED)**

Note: CPUE index numbers for years prior to 2008 are less comparable due to change in net catchability.

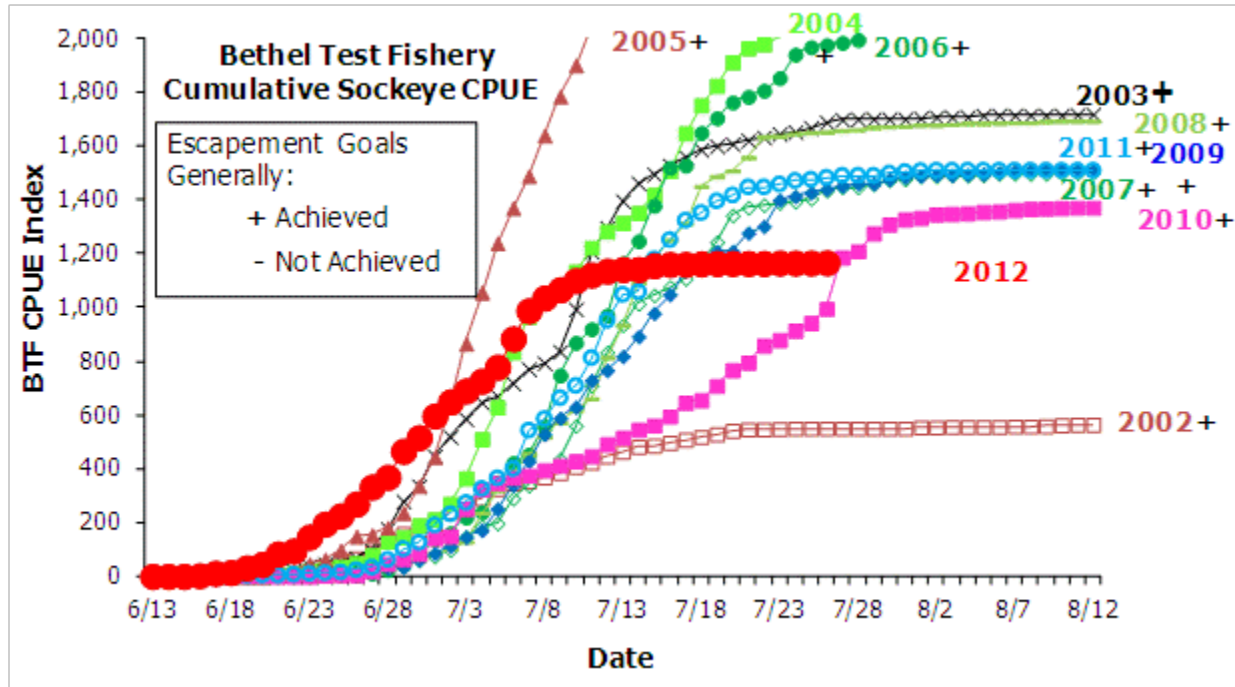
	2002	2003	2004	2005	2006	2007	2008	2009	2010	2011	2012
7/20	401	639	1,084	868	644	504	609	700	451	576	409
7/21	401	639	1,113	868	648	506	609	702	451	576	409
7/22	401	639	1,116	868	648	509	613	702	451	576	411
7/23	401	639	1,116	868	648	509	613	702	451	576	411
7/24	403	639	1,122	868	649	511	615	702	453	576	411
7/25	403	640	1,124	868	649	511	615	702	455	576	412

Chum Salmon Cumulative CPUE Index, Bethel Test Fishery



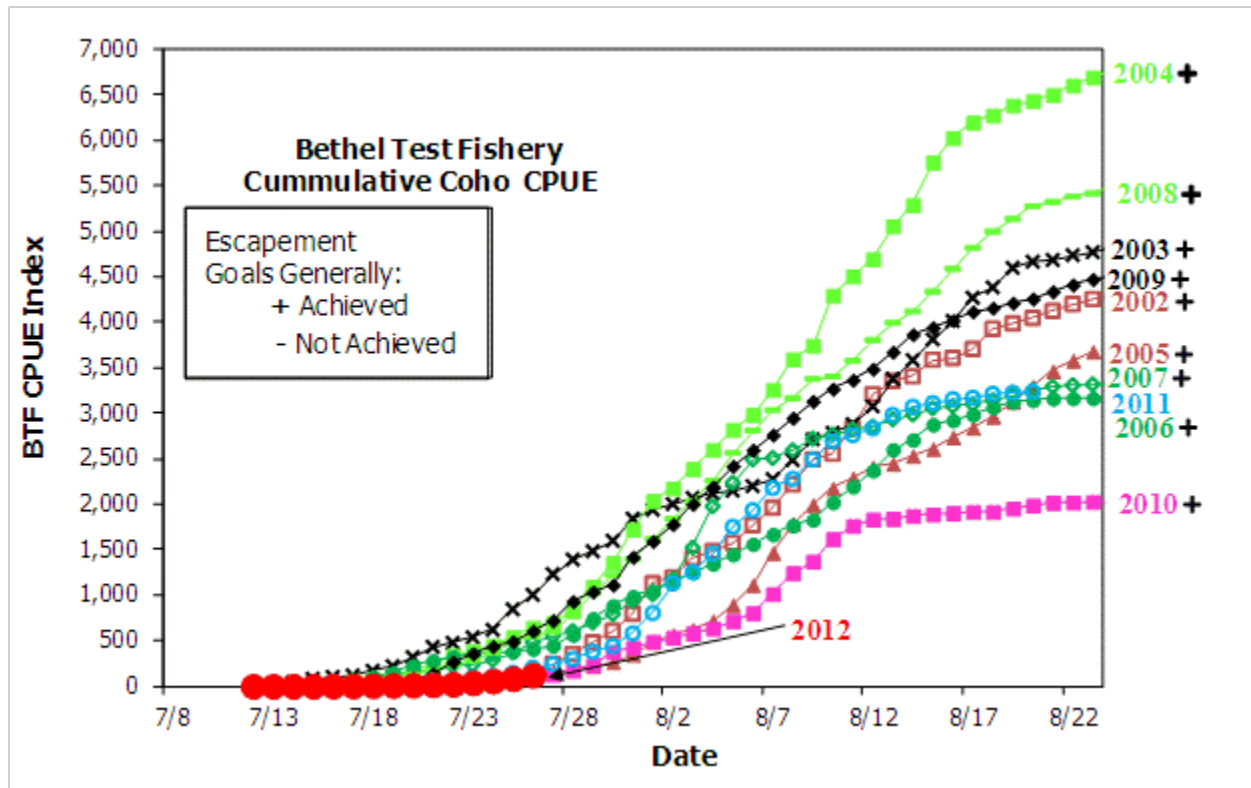
Bethel Test Fishery Chum Salmon Cumulative CPUE Index											
	2002	2003	2004	2005	2006	2007	2008	2009	2010	2011	2012
7/22	6302	4238	4681	16177	12847	9755	5896	7120	6909	9303	6435
7/23	6343	4309	4700	16445	13078	9782	6026	7319	7034	9394	6542
7/24	6384	4416	4703	16598	13118	9876	6174	7490	7172	9418	6575
7/25	6444	4516	4714	16775	13284	9955	6245	7527	7253	9484	6605
7/26	6506	4592	4758	16969	13421	10090	6322	7581	7329	9572	6676
7/27	6530	4630	4797	17011	13481	10189	6352	7679	7364	9627	
7/28	6590	4663	4884	17031	13547	10259	6429	7760	7419	9651	
7/29	6623	4692	4935	17094	13616	10296	6456	7809	7507	9715	
7/30	6651	4719	4980	17211	13675	10359	6499	7848	7542	9759	

Sockeye Salmon Cumulative CPUE Index, Bethel Test Fishery

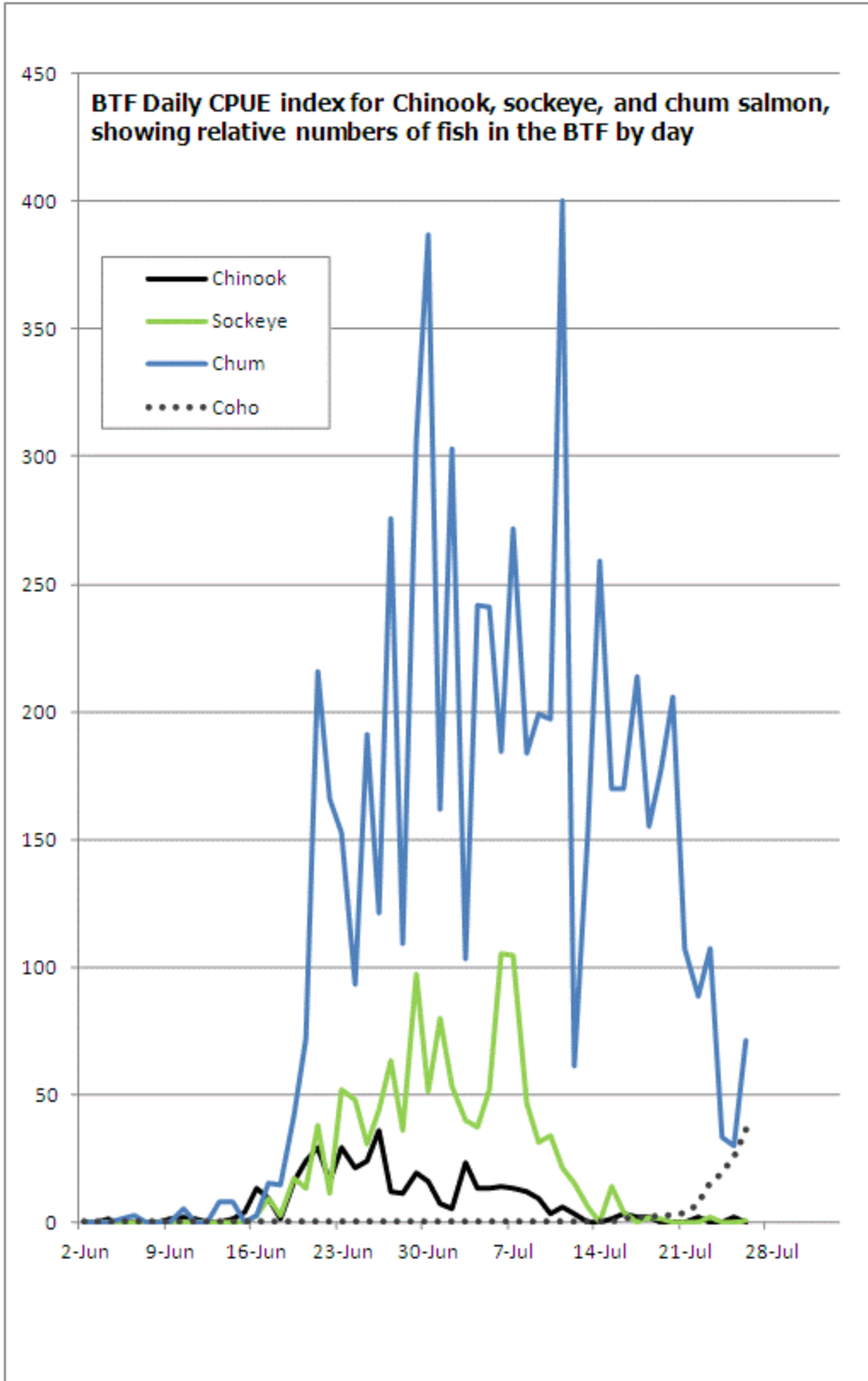


Bethel Test Fishery Sockeye Salmon Cumulative CPUE Index											
	2002	2003	2004	2005	2006	2007	2008	2009	2010	2011	2012
7/22	546	1,633	1,980	2,845	1,807	1,381	1,634	1,302	858	1,448	1,164
7/23	548	1,646	2,010	2,860	1,854	1,389	1,636	1,400	879	1,459	1,166
7/24	550	1,652	2,013	2,870	1,941	1,394	1,647	1,414	914	1,472	1,166
7/25	550	1,668	2,025	2,880	1,968	1,405	1,650	1,428	942	1,476	1,166
7/26	550	1,688	2,032	2,890	1,976	1,434	1,653	1,441	995	1,483	1,167
7/27	550	1,699	2,035	2,896	1,985	1,447	1,658	1,452	1,186	1,491	
7/28	550	1,700	2,035	2,896	1,995	1,447	1,661	1,461	1,209	1,491	
7/29	550	1,700	2,039	2,904	2,018	1,459	1,669	1,461	1,275	1,491	

Coho Salmon Cumulative CPUE Index, Bethel Test Fishery



Bethel Test Fishery Coho Salmon Cumulative CPUE Index											
	2002	2003	2004	2005	2006	2007	2008	2009	2010	2011	2012
7/22	21	473	337	51	320	219	231	265	30	68	22
7/23	32	534	385	57	352	235	285	356	40	95	37
7/24	49	616	447	74	365	286	365	436	64	106	57
7/25	95	841	539	90	382	368	480	491	79	142	83
7/26	148	1,001	645	110	408	478	550	606	103	200	120
7/27	244	1,229	692	156	445	550	596	721	124	240	
7/28	351	1,389	828	185	563	605	785	931	170	296	
7/29	478	1,479	1,093	219	742	697	1,020	1,037	229	378	



ESCAPEMENT MONITORING

Status of Salmon Assessment Projects as of July 27, 2012

- Kwethluk River weir: Out of operation on July 23rd due to high water.
- Salmon River weir: Partial day operations throughout the last week due to high water.
- Kogrukluk River weir: Not operating. Reinstall in progress and should be back in operation by July 30th.
- All remaining weirs have maintained full operation.

Footnotes for tables:

- (*) – Indicates a non-operational day.
- (***) – Indicates a partial day of operating.

Chinook Salmon

Kwethluk River weir historical cumulative daily Chinook salmon escapement.											
	= years below escapement goal.										Esc Goal Range: 6,000 to 11,000
Date	Cumulative Daily Passage										
	2002	2003	2004	2005	2006	2007	2008	2009	2010	2011	2012
7/21	7,428	12,084	25,318		15,039	10,103	3,357	4,359	1,166	3,334	795 **
7/22	7,509	12,251	25,689		15,380	10,249	3,456	4,607	1,207	3,495	796 *
7/23	7,612	12,441	25,947		15,682	10,716	3,576	4,986	1,249	3,549	796 *
7/24	7,749	12,729	26,139		15,793	10,951	3,709	5,163	1,308	3,624	796 *
7/25	7,863	12,909	26,387		16,102	11,464	3,859	5,255	1,354	3,768	796 *
7/26	7,863	12,909	26,387		16,102	11,464	3,859	5,291	1,428	3,847	796 *
7/27	7,863	12,909	26,387		16,102	11,464	3,859	5,366	1,472	3,877	
7/28	7,863	12,909	26,387		16,102	11,464	3,859	5,428	1,522	3,922	
7/29	7,863	12,909	26,387		16,102	11,464	3,859	5,494	1,552	3,956	
Season											
Total	8,502	14,474	28,604	n.a.	17,618	12,927	5,275	5,744	1,693	4,079	

Tululsak River weir historical cumulative daily Chinook salmon escapement.											
	= years below escapement goal.										Esc Goal Range: 1,000 to 2,100
Date	Cumulative Daily Passage										
	2002	2003	2004	2005	2006	2007	2008	2009	2010	2011	2012
7/21	1,176	767	1,176	2,214	645	220	419	185	96	191	400
7/22	1,192	813	1,203	2,296	745	235	431	193	103	220	424
7/23	1,211	821	1,314	2,366	764	272	438	209	118	236	453
7/24	1,214	834	1,328	2,467	788	292	458	234	125	242	469
7/25	1,244	864	1,347	2,499	800	311	484	261	129	252	475
7/26	1,244	864	1,347	2,499	800	311	484	263	132	260	481
7/27	1,244	864	1,347	2,499	800	311	484	265	137	262	
7/28	1,244	864	1,347	2,499	800	311	484	280	153	265	
7/29	1,244	864	1,347	2,499	800	311	484	299	162	268	
Season											
Total	1,346	1,064	1,475	2,653	1,043	394	701	362	201	288	

Chinook Salmon (continued)

Salmon River weir, Aniak River historical cumulative daily Chinook salmon							
Esc Goal Range: none							
Date	Cumulative Daily Passage						
	2006	2007	2008	2009	2010	2011	2012
7/21	4,693	3,075	1,199	532			138
7/22	4,911	3,420	1,210	615			139 **
7/23	5,184	3,666	1,320	636	Not	Not	139 *
7/24	5,320	3,869	1,459	758	operated	operated	139 *
7/25	5,475	4,167	1,629	828	2010	2011	147 **
7/26	5,579	4,332	1,676	913			173 **
7/27	5,697	4,642	1,736	988			
7/28	5,890	4,895	1,952	1,052			
7/29	6,014	4,996	1,971	1,155			
Season							
Total	6,732	6,220	2,376	1,548	n.a.	n.a.	

George River weir historical cumulative daily Chinook salmon escapement.											
Esc Goal Range: 3,100 to 7,900											
= years below escapement goal.											
Date	Cumulative Daily Passage										
	2002	2003	2004	2005	2006	2007	2008	2009	2010	2011	2012
7/21	2,265	4,453	4,844	3,552	3,982	4,376	2,079	3,336	1,261	1,423	1,784
7/22	2,290	4,465	4,866	3,578	4,019	4,403	2,151	3,379	1,282	1,453	1,825
7/23	2,299	4,490	4,906	3,605	4,101	4,555	2,257	3,441	1,284	1,481	1,854
7/24	2,317	4,503	4,944	3,636	4,120	4,611	2,294	3,456	1,315	1,496	1,911
7/25	2,323	4,521	4,973	3,672	4,152	4,662	2,381	3,468	1,342	1,518	1,969
7/26	2,323	4,521	4,973	3,672	4,152	4,662	2,381	3,502	1,366	1,528	1,980
7/27	2,323	4,521	4,973	3,672	4,152	4,662	2,381	3,508	1,375	1,535	
7/28	2,323	4,521	4,973	3,672	4,152	4,662	2,381	3,539	1,402	1,540	
7/29	2,323	4,521	4,973	3,672	4,152	4,662	2,381	3,579	1,415	1,546	
Season											
Total	2,444	4,693	5,207	3,845	4,357	4,883	2,698	3,663	1,500	1,571	

Kogrukuk River weir historical cumulative daily Chinook salmon escapement.											
Esc Goal Range: 5,300 to 14,000											
= years below escapement goal.											
Date	Cumulative Daily Passage										
	2002	2003	2004	2005	2006	2007	2008	2009	2010	2011	2012
7/21	9054	9627	16457	17479	13163	9046	4252	6074	3107	2826	261 *
7/22	9303	10093	16931	18113	13748	9485	4740	6366	3451	3389	261 *
7/23	9417	10316	17217	18749	14631	9864	5571	6649	3552	3708	261 *
7/24	9593	10573	17402	19205	15178	10164	6105	6876	3750	3993	261 *
7/25	9724	10821	17623	19590	16001	10505	6845	7079	3823	4445	261 *
7/26	9806	10937	17820	19949	16371	10988	7449	7540	4061	4858	261 *
7/27	9856	11090	18305	20222	16721	11338	7810	7956	4185	5161	
7/28	9893	11196	18600	20542	17166	11588	8221	8193	4305	5391	
7/29	9925	11281	18750	20777	17584	11945	8507	8481	4568	5676	
Season											
Total	10,104	11,771	19,651	22,000	19,414	13,029	9,730	9,702	5,690	6,891	

Chinook Salmon (continued)

Tatlawiksuk River weir historical cumulative daily Chinook salmon escapement.											
	Esc Goal Range: none										
Date	Cumulative Daily Passage										
	2002	2003	2004	2005	2006	2007	2008	2009	2010	2011	2012
7/21	2,084	1,471	2,631	2,754	1,511	1,869	736	988	451	927	975
7/22	2,113	1,486	2,652	2,778	1,526	1,888	782	991	466	935	1,007
7/23	2,126	1,503	2,678	2,788	1,555	1,903	816	994	472	943	1,025
7/24	2,133	1,528	2,697	2,803	1,576	1,934	842	1,001	478	952	1,034
7/25	2,151	1,544	2,710	2,814	1,586	1,971	890	1,009	484	956	1,052
7/26	2,151	1,544	2,710	2,814	1,586	1,971	890	1,014	495	964	1,069
7/27	2,151	1,544	2,710	2,814	1,586	1,971	890	1,017	501	969	
7/28	2,151	1,544	2,710	2,814	1,586	1,971	890	1,024	507	973	
7/29	2,151	1,544	2,710	2,814	1,586	1,971	890	1,032	508	978	
Season											
Total	2,237	1,683	2,833	2,920	1,700	2,061	1,071	1,071	567	1,012	

Talotna River weir historical cumulative daily Chinook salmon escapement.											
	Esc Goal Range: none										
Date	Cumulative Daily Passage										
	2002	2003	2004	2005	2006	2007	2008	2009	2010	2011	2012
7/21	267	256	382	432	420	346	170	230	103	99	132
7/22	269	271	384	435	432	351	210	233	105	109	161
7/23	269	277	410	442	444	354	240	239	108	110	165
7/24	269	288	411	446	448	357	272	256	108	111	174
7/25	275	295	411	453	451	364	307	257	112	116	203
7/26	275	295	411	453	451	364	307	257	117	117	212
7/27	275	295	411	453	451	364	307	264	123	120	
7/28	275	295	411	453	451	364	307	265	127	123	
7/29	275	295	411	453	451	364	307	279	130	127	
Season											
Total	316	378	461	499	539	418	413	311	178	136	

Chum Salmon

Kwethluk River weir historical cumulative daily chum salmon escapement.											
											Esc Goal Range: none
Date	Cumulative Daily Passage										
	2002	2003	2004	2005	2006	2007	2008	2009	2010	2011	2012
7/21	24,797	20,803	26,533		37,705	31,066	9,838	16,364	11,868	10,353	2,711 **
7/22	25,638	21,739	27,486		38,284	31,966	10,123	17,634	12,480	11,399	2,741 *
7/23	26,640	23,150	28,115		38,512	34,938	10,651	20,118	12,909	11,807	2,741 *
7/24	27,315	23,703	29,262		38,912	37,284	11,503	21,380	13,751	12,268	2,741 *
7/25	27,987	25,076	30,070		40,245	39,714	12,302	21,836	14,137	13,158	2,741 *
7/26	27,987	25,076	30,070		40,245	39,714	12,302	22,284	14,597	13,924	2,741 *
7/27	27,987	25,076	30,070		40,245	39,714	12,302	23,409	15,126	14,601	
7/28	27,987	25,076	30,070		40,245	39,714	12,302	24,452	16,007	15,158	
7/29	27,987	25,076	30,070		40,245	39,714	12,302	25,516	16,465	15,555	
Season											
Total	35,854	41,812	38,646	n.a.	47,490	54,913	20,030	32,191	19,242	18,329	

Tuluksak River weir historical cumulative daily chum salmon escapement.											
											Esc Goal Range: none
Date	Cumulative Daily Passage										
	2002	2003	2004	2005	2006	2007	2008	2009	2010	2011	2012
7/21	6,583	4,052	8,011	22,306	16,159	8,755	6,615	4,645	7,183	3,848	6,218
7/22	6,793	4,182	8,372	23,384	16,882	9,236	7,167	5,397	7,474	4,329	7,908
7/23	7,163	4,260	8,845	24,520	17,386	10,425	7,618	6,502	7,921	4,761	9,447
7/24	7,250	4,565	9,186	26,610	18,151	11,189	8,022	7,228	8,263	4,926	10,255
7/25	7,499	5,305	9,452	28,407	18,533	11,744	8,343	7,376	8,601	5,559	10,515
7/26	7,499	5,305	9,452	28,407	18,533	11,744	8,343	7,703	9,114	6,104	10,780
7/27	7,499	5,305	9,452	28,407	18,533	11,744	8,343	8,215	9,547	6,455	
7/28	7,499	5,305	9,452	28,407	18,533	11,744	8,343	9,098	10,055	6,744	
7/29	7,499	5,305	9,452	28,407	18,533	11,744	8,343	9,784	10,502	7,085	
Season											
Total	9,958	11,724	0	11,796	35,696	25,650	17,647	12,550	13,671	13,042	10,010

Salmon River weir, Aniak River historical cumulative daily chum salmon							
							Esc Goal Range: none
Date	Cumulative Daily Passage						
	2006	2007	2008	2009	2010	2011	2012
7/21	29,256	12,740	4,080	1,491			1214
7/22	30,617	13,353	4,273	1,733	Not	Not	1214 **
7/23	31,599	14,527	4,640	1,893	operated	operated	1214 *
7/24	32,346	15,737	5,037	2,440	2010	2011	1214 *
7/25	33,052	16,703	5,460	3,041			1313 **
7/26	34,083	18,285	5,703	3,613			1405 **
7/27	35,005	19,363	5,979	4,015			
7/28	35,986	20,515	6,231	4,433			
7/29	36,655	21,125	6,704	4,898			
Season							
Total	40,306	25,379	9,459	9,297	n.a.	n.a.	

Chum Salmon (continued)

George River weir historical cumulative daily chum salmon escapement.											
	Esc Goal Range: none										
Date	Cumulative Daily Passage										
	2002	2003	2004	2005	2006	2007	2008	2009	2010	2011	2012
7/21	5,590	17,523	11,628	10,649	29,611	30,134	20,311	5,373	18,097	31,029	22,011
7/22	5,655	18,645	11,836	10,996	31,184	31,063	21,281	5,622	18,688	32,330	23,332
7/23	5,728	19,665	12,094	11,358	32,411	34,227	22,126	5,855	19,120	33,430	24,623
7/24	5,798	20,253	12,345	11,651	33,411	37,561	22,998	6,008	19,602	34,500	25,908
7/25	5,858	21,002	12,555	11,857	34,241	40,739	23,931	6,157	20,413	35,694	26,967
7/26	5,858	21,002	12,555	11,857	34,241	40,739	23,931	6,362	21,028	36,817	27,665
7/27	5,858	21,002	12,555	11,857	34,241	40,739	23,931	6,508	21,635	37,943	
7/28	5,858	21,002	12,555	11,857	34,241	40,739	23,931	6,695	22,133	38,920	
7/29	5,858	21,002	12,555	11,857	34,241	40,739	23,931	6,938	22,543	39,623	
Season Total	6,543	33,666	14,409	14,828	41,467	55,842	29,978	7,941	26,154	44,640	

Kogrukuk River weir historical cumulative daily chum salmon escapement.											
	Esc Goal Range: 15,000 to 49,000										
	= years below escapement goal.										
Date	Cumulative Daily Passage										
	2002	2003	2004	2005	2006	2007	2008	2009	2010	2011	2012
7/21	42,953	a 15,976	16,840	115,514	122,572	29,248	18,441	32,182	33,563	31,272	3,488 *
7/22	44,151	17,054	17,503	124,093	128,519	30,595	19,838	35,687	35,751	35,681	3,488 *
7/23	45,303	17,593	17,940	131,962	134,101	32,435	21,457	39,083	37,889	39,029	3,488 *
7/24	48,216	18,077	18,288	139,285	138,597	33,355	22,994	42,738	39,933	43,053	3,488 *
7/25	49,354	18,935	18,821	145,986	142,843	34,067	24,783	46,384	41,537	46,036	3,488 *
7/26	49,354	18,935	18,821	145,986	142,843	34,067	24,783	49,405	43,830	49,133	3,488 *
7/27	49,354	18,935	18,821	145,986	142,843	34,067	24,783	51,859	45,872	52,344	
7/28	49,354	18,935	18,821	145,986	142,843	34,067	24,783	56,093	47,807	55,544	
7/29	49,354	18,935	18,821	145,986	142,843	34,067	24,783	59,218	49,835	59,052	
Season Total	51,570	23,413	24,201	197,723	180,594	49,505	44,978	84,940	63,583	76,384	

Tatlawiksuk River weir historical cumulative daily chum salmon escapement.											
	Esc Goal Range: none										
Date	Cumulative Daily Passage										
	2002	2003	2004	2005	2006	2007	2008	2009	2010	2011	2012
7/21	21,276		16,184	42,591	24,297	58,606	21,107	11,863	26,092	59,532	33,431
7/22	21,791		16,679	44,013	25,221	60,497	22,091	12,656	27,035	61,600	34,730
7/23	22,200		17,192	45,504	26,183	62,215	23,079	13,406	27,803	64,231	36,055
7/24	22,451		17,655	46,656	26,938	64,872	24,031	14,247	28,638	66,393	37,345
7/25	22,657		18,129	47,794	27,672	67,270	25,137	15,012	29,539	69,059	38,601
7/26	22,658		18,129	47,794	27,672	67,270	25,137	15,665	30,768	71,879	39,676
7/27	22,659		18,129	47,794	27,672	67,270	25,137	16,341	31,784	74,411	
7/28	22,660		18,129	47,794	27,672	67,270	25,137	16,982	32,694	76,336	
7/29	22,661		18,129	47,794	27,672	67,270	25,137	17,251	33,211	77,797	
Season Total	24,542	n.a.	21,245	55,720	32,301	83,246	30,896	19,975	36,701	84,202	

Chum Salmon (continued)

Takotna River weir historical cumulative daily chum salmon escapement.											
	Esc Goal Range: none										
Date	Cumulative Daily Passage										
	2002	2003	2004	2005	2006	2007	2008	2009	2010	2011	2012
7/21	3,741	2,419	1,329	4,845	9,142	6,571	4,050	1,291	2,669	5,890	4,250
7/22	3,836	2,587	1,354	5,085	9,463	6,886	4,282	1,389	2,790	6,305	4,496
7/23	3,915	2,674	1,412	5,238	9,751	7,167	4,472	1,505	2,893	6,598	4,722
7/24	3,982	2,743	1,445	5,360	10,069	7,359	4,582	1,614	3,033	6,852	4,878
7/25	4,044	2,806	1,460	5,487	10,337	7,610	4,707	1,657	3,125	7,058	5,038
7/26	4,044	2,806	1,460	5,487	10,337	7,610	4,707	1,748	3,287	7,247	5,195
7/27	4,044	2,806	1,460	5,487	10,337	7,610	4,707	1,823	3,401	7,394	
7/28	4,044	2,806	1,460	5,487	10,337	7,610	4,707	1,895	3,501	7,593	
7/29	4,044	2,806	1,460	5,487	10,337	7,610	4,707	1,995	3,590	7,720	
Season											
Total	4,399	3,388	1,633	6,488	12,651	8,873	5,704	2,528	4,057	8,414	

Sockeye Salmon

Kwethluk River weir historical cumulative daily sockeye salmon escapement.											
Esc Goal: none											
Date	Cumulative Daily Passage										
	2002	2003	2004	2005	2006	2007	2008	2009	2010	2011	2012
KWE Total	272	2,928	3,490	n.a.	6,732	5,262	2,451	4,230	4,264	2,031	0
7/21	222	2,674	3,253		6,057	4,217	1,940	3,646	3,655	1,814	227 **
7/22	224	2,708	3,271		6,124	4,251	1,961	3,722	3,740	1,843	228 *
7/23	228	2,730	3,276		6,179	4,339	2,006	3,817	3,776	1,873	228 *
7/24	228	2,740	3,279		6,200	4,373	2,041	3,868	3,860	1,890	228 *
7/25	228	2,757	3,294		6,241	4,483	2,083	3,906	3,902	1,919	228 *
7/26	228	2,757	3,294		6,241	4,483	2,083	3,916	3,953	1,936	228 *
7/27	228	2,757	3,294		6,241	4,483	2,083	3,970	4,014	1,955	
7/28	228	2,757	3,294		6,241	4,483	2,083	4,024	4,056	1,963	
7/29	228	2,757	3,294		6,241	4,483	2,083	4,079	4,079	1,969	
Season Total	272	2,928	3,491	n.a.	6,732	5,262	2,451	4,230	4,242	2,031	

Kogrukuk River weir historical cumulative daily sockeye salmon escapement.											
Esc Goal Range: 4,400 to 17,000											
Date	Cumulative Daily Passage										
	2002	2003	2004	2005	2006	2007	2008	2009	2010	2011	2012
7/21	3,810	7,513	5,611	30,013	40,408	7,910	7,925	12,562	4,069	3,855	126 *
7/22	3,841	7,823	5,778	31,327	43,827	8,502	8,796	13,351	4,949	4,574	126 *
7/23	3,858	7,926	5,860	32,566	46,547	8,925	10,263	14,155	5,462	5,017	126 *
7/24	3,917	8,101	5,918	33,342	48,302	9,443	11,405	14,723	6,102	5,358	126 *
7/25	3,950	8,422	6,056	33,939	49,672	10,180	13,025	15,043	6,424	5,830	126 *
7/26	3,950	8,422	6,056	33,939	49,672	10,180	13,025	15,890	7,284	6,363	126 *
7/27	3,950	8,422	6,056	33,939	49,672	10,180	13,025	17,120	8,023	6,776	
7/28	3,950	8,422	6,056	33,939	49,672	10,180	13,025	18,073	8,524	7,054	
7/29	3,950	8,422	6,056	33,939	49,672	10,180	13,025	19,043	9,420	7,290	
Season Total	4,050	9,164	6,775	37,939	60,807	16,525	19,675	23,785	13,995	8,132	

Telequana Lake Weir historical cumulative daily sockeye salmon escapement.			
Esc Goal Range: none			
Date	Cumulative Daily Passage		
	2010	2011	2012
7/21	14,898	24,753	10,234
7/22	16,154	26,123	11,467
7/23	17,457	28,047	13,293
7/24	18,582	29,369	14,622
7/25	20,015	30,234	15,784
7/26	22,347	31,240	16,443
7/27	25,700	31,911	
7/28	28,991	32,240	
7/29	32,104	32,618	
Season Total	72,021	34,314	

COMMERCIAL CATCH REPORT:

District 1 Commercial Openings for 2012

Date	Subdistrict	Permits	Hours	Chinook		Sockeye		Chum		Coho	
				Catch	CPUE	Catch	CPUE	Catch	CPUE	Catch	CPUE
7/13/2012	1-B ^a	151	4	96	0.16	1,041	1.72	16,270	26.94	20	0.03
7/16/2012	1-A ^a	46	4	74	0.40	301	1.64	6,773	36.81	5	0.03
7/17/2012	1-B ^a	152	4	64	0.11	707	1.16	11,793	19.40	122	0.20
7/19/2012	1-A ^a	52	4	49	0.24	210	1.01	6,046	29.07	220	1.06
7/20/2012	1-B ^a	157	4	48	0.08	162	0.26	8,753	13.94	489	0.78
7/23/2012	1-A ^a	41	4	18	0.11	135	0.82	3,859	23.53	324	1.98
7/24/2012	1-B ^a	132	4	6	0.01	52	0.10	2,893	5.48	1,564	2.96
7/26/2012	1-A ^a	53	4	11	0.05	31	0.15	3,255	15.35	1,545	7.29

Footnotes

^a All Chinook harvested during the commercial opening were not sold but kept as personal use.

^b Incomplete verbal report.

In-season data is preliminary, subject to change

Broad Scale view of Rolling Closure Sections, Kuskokwim River, Subsistence Chinook Salmon Management 2012

