

**Fishery Management Report No. 07-04**

---

---

**Alaska Salmon Enhancement Program  
2006 Annual Report**

by

**Bruce White**

March 2007

---

---

Alaska Department of Fish and Game

Divisions of Sport Fish and Commercial Fisheries





***FISHERY MANAGEMENT REPORT NO. 07-04***

**ALASKA SALMON ENHANCEMENT PROGRAM  
2006 ANNUAL REPORT**

by

Bruce White,  
Alaska Department of Fish and Game, Commercial Fisheries, Juneau

March 2007

Alaska Department of Fish and Game  
Division of Sport Fish, Research and Technical Services  
333 Raspberry Road, Anchorage, Alaska, 99518-1565

The Division of Sport Fish Fishery Management Reports series was established in 1989 for the publication of an overview of Division of Sport Fish management activities and goals in a specific geographic area. Since 2004, the Division of Commercial Fisheries has also used the Fishery Management Report series. Fishery Management Reports are intended for fishery and other technical professionals, as well as lay persons. Fishery Management Reports are available through the Alaska State Library and on the Internet: <http://www.sf.adfg.state.ak.us/statewide/divreports/html/intersearch.cfm>. This publication has undergone regional peer review.

*Bruce White,  
Alaska Department of Fish and Game, Division of Commercial Fisheries,  
Headquarters Office, 1255 West 8<sup>th</sup> Street, P.O. Box 25526, Juneau, Alaska, USA*

*This document should be cited as:*

*White, B. 2007. Alaska salmon enhancement program 2006 annual report. Alaska Department of Fish and Game, Fishery Management Report No. 07-04, Anchorage.*

The Alaska Department of Fish and Game (ADF&G) administers all programs and activities free from discrimination based on race, color, national origin, age, sex, religion, marital status, pregnancy, parenthood, or disability. The department administers all programs and activities in compliance with Title VI of the Civil Rights Act of 1964, Section 504 of the Rehabilitation Act of 1973, Title II of the Americans with Disabilities Act (ADA) of 1990, the Age Discrimination Act of 1975, and Title IX of the Education Amendments of 1972.

If you believe you have been discriminated against in any program, activity, or facility please write:

ADF&G ADA Coordinator, P.O. Box 115526, Juneau AK 99811-5526

U.S. Fish and Wildlife Service, 4040 N. Fairfax Drive, Suite 300 Webb, Arlington VA 22203

Office of Equal Opportunity, U.S. Department of the Interior, Washington DC 20240

The department's ADA Coordinator can be reached via phone at the following numbers:

(VOICE) 907-465-6077, (Statewide Telecommunication Device for the Deaf) 1-800-478-3648, (Juneau TDD)

907-465-3646, or (FAX) 907-465-6078

For information on alternative formats and questions on this publication, please contact:

ADF&G, Sport Fish Division, Research and Technical Services, 333 Raspberry Road, Anchorage AK 99518 (907)267-2375

# TABLE OF CONTENTS

	<b>Page</b>
LIST OF TABLES.....	ii
LIST OF FIGURES.....	iii
ABSTRACT .....	1
INTRODUCTION.....	1
HIGHLIGHTS IN 2006.....	1
FIGURES AND TABLES.....	3

## LIST OF TABLES

<b>Table</b>	<b>Page</b>
1. List of acronyms and abbreviations used throughout this report.....	7
2. Estimated egg takes from Alaska hatcheries, in millions, 2006.....	8
3. Estimated releases from Alaska hatcheries, in millions, 2006.....	8
4. Total returns attributed to Alaska hatcheries and enhancement projects in 2006, including common property, cost recovery, broodstock, and escapement.....	8
5. Alaska common property commercial harvest of enhanced fish, in thousands, 2006.....	9
6. Preliminary estimated value of the total Alaska common property commercial harvest, in thousands of dollars, 2006.....	10
7. Salmon fishery enhancement program timeline of events.....	11
8. Eggs taken at Alaska hatcheries in 2006, in millions of eggs (transferred eggs are listed with the receiving hatchery).....	14
9. Alaskan hatchery releases in 2006, in millions of fish.....	15
10. Estimated adult returns by species to Alaska enhancement projects in 2006, including common property harvests, as reported by operators.....	17
11. Projected adult returns, by species, to Alaska enhancement projects in 2006.....	18
12. Cumulative state loans made to PNP salmon hatchery corporations and enhancement funds returned to associations.....	19
13. Summary of anadromous salmon production (all species) from Alaska hatcheries and enhancement projects.....	20
14. Summary of pink salmon production from Alaska hatcheries and enhancement projects.....	20
15. Summary of chum salmon production from Alaska hatcheries and enhancement projects.....	21
16. Summary of coho salmon production from Alaska hatcheries and enhancement projects.....	21
17. Summary of Chinook salmon production from Alaska hatcheries and enhancement projects.....	22
18. Summary of sockeye salmon production from Alaska hatcheries and enhancement projects.....	22
19. Summary of statewide salmon production from private nonprofit hatcheries in Alaska, as reported by operators.....	23
20. Summary of pink salmon production from private nonprofit hatcheries in Alaska, as reported by operators.....	24
21. Summary of chum salmon production from private nonprofit hatcheries in Alaska, as reported by operators.....	25
22. Summary of coho salmon production from private nonprofit hatcheries in Alaska, as reported by operators.....	26
23. Summary of Chinook salmon production from private nonprofit hatcheries in Alaska, as reported by operators.....	27
24. Summary of sockeye salmon production from private nonprofit hatcheries in Alaska, as reported by operators.....	28
25. Alaska commercial salmon fishery harvest average weights and prices.....	29
26. Alaska state hatchery FY 2006 operating budgets, in thousands of dollars.....	29
27. Estimated pink salmon returns to Alaska hatcheries in 2006, including common property harvests, as reported by operators.....	30
28. Estimated chum salmon returns to Alaska hatcheries in 2006, including common property harvests, as reported by operators.....	31
29. Estimated coho salmon returns to Alaska hatcheries in 2006, including common property harvests, as reported by operators.....	32
30. Estimated Chinook salmon returns to Alaska hatcheries in 2006, including common property harvests, as reported by operators.....	33
31. Estimated sockeye salmon returns to Alaska hatcheries in 2006, including common property harvests, as reported by operators.....	34
32. Estimated “other” enhanced returns to Alaska hatcheries in 2006, including common property harvests, as reported by operators.....	35
33. Summary of salmon production in 2006 from Fish Resource Permits issued by the Alaska Department of Fish and Game.....	36

## LIST OF TABLES (Continued)

<b>Table</b>		<b>Page</b>
34.	Updated pink salmon returns to Alaska hatcheries in 2005, including common property harvest, as reported by operators.....	39
35.	Updated chum salmon returns to Alaska hatcheries in 2005, including common property harvests, as reported by operators.....	40
36.	Updated coho salmon returns to Alaska hatcheries in 2005, including common property harvests, as reported by operators.....	41
37.	Updated Chinook salmon returns to Alaska hatcheries in 2005, including common property harvests, as reported by operators. ....	42
38.	Updated Sockeye salmon returns to Alaska hatcheries in 2005, including common property harvests, as reported by operators.....	43
39.	Updated “other” enhanced fish returns to Alaska hatcheries in 2005, as reported by operators. ....	44
40.	Actively operated Alaska hatcheries. ....	45
41.	Permitted capacity of Alaskan private nonprofit hatcheries in 2006, in millions of eggs. ....	47

## LIST OF FIGURES

<b>Figure</b>		<b>Page</b>
1.	Total egg-takes and releases in the Alaska salmon hatchery program, 1977 to 2006. ....	4
2.	Total returns in the Alaska salmon hatchery program, 1977 to 2006. ....	4
3.	Alaska salmon hatchery returns by species in 2006. ....	5
4.	Locations of hatcheries in Alaska.....	6





## **ABSTRACT**

The Alaska Department of Fish and Game oversees and regulates all state and private sector salmon rehabilitation and enhancement projects. Protection of Alaska's natural salmon stocks requires stringent permitting processes. Geneticists, pathologists, and biologists review all projects prior to the issuance of a permit to operate a salmon ranching facility, transfer eggs or fish, or release any fish into Alaska waters. Pathology, genetic, coded wire tag, and otolith processing laboratories are maintained to provide both diagnostic information to Alaska Department of Fish and Game fishery managers, and inseason and technical expertise to the private sector.

Over 1.8 billion salmon eggs were collected by Alaskan hatchery operators in 2006. In addition, over 1.4 billion fish were released. An estimated 48 million salmon of hatchery origin returned. Of the 123 million salmon harvested in the commercial common property fishery, over 24 million or 20% of the harvest was contributed from ocean ranching by the Alaska salmon enhancement program. Enhanced salmon provided over \$59 million or 21% of the preliminary value of the commercial common property harvest. The ocean ranching program provides hundreds of Alaskans with seasonal and fulltime jobs. It is considered the largest agricultural industry in Alaska.

Key words: Alaska salmon enhancement program, salmon hatchery, annual report, ocean ranching, private non-profit corporation, Southeast Alaska, Prince William Sound, Cook Inlet, Kodiak, egg take, cost recovery, Chinook, pink, chum, coho, sockeye

## **INTRODUCTION**

Prince William Sound and Southeast Alaska are the predominant regions involved with salmon enhancement programs and pink and chum salmon are the predominant species produced. Production levels, in terms of egg takes and releases, have largely stabilized (Figure 1); programs have matured and are generally operating at planned capacities.

The salmon enhancement program is composed of several factions:

- 30 private nonprofit (PNP) corporation hatcheries,
- 2 federal or Bureau of Indian Affairs (BIA) hatcheries,
- 2 Alaska state hatcheries, and
- Several streamside incubation and restoration projects.

The Alaska Department of Fish and Game (ADF&G) Division of Sport Fish operates the state hatcheries, primarily to produce salmonid species intended for sport fisheries. PNP corporations are permitted to operate salmon hatcheries and recoup their operational costs from a special harvest of returning adult fish, called a cost recovery harvest. All other returning adult fish are available for harvest in Alaska's common property fisheries open to the public. Federal hatcheries are generally used for research. Streamside incubation projects enhance stocks of fish inexpensively. Stream restoration projects involve restoring streams degraded by human activity.

## **HIGHLIGHTS IN 2006**

- The preliminary statewide salmon harvest in 2006 was 142 million fish with an estimated ex-vessel value of over \$309 million. Across the state, the total return to Alaska hatcheries was nearly 48 million salmon. The preliminary ex-vessel value of enhanced salmon to the commercial common property fishery was over \$59 million. Compared to 2005, the preliminary exvessel price paid for sockeye, Chinook, coho, and chum salmon increased, while the price paid for pink salmon remained about the same.
- In 2006, the preliminary exvessel value of the statewide commercial salmon harvest declined by about 8% compared to the record salmon harvest in 2005. This decrease was largely due

to the decline in the number of pink salmon harvested. The total enhanced chum return (16 million) was the third highest on record and the total enhanced sockeye return (4 million) was the second highest on record.

- Enhanced salmon accounted for approximately 21% of the total exvessel value of the statewide commercial common property harvest. Statewide, enhanced salmon accounted for 71%, 24%, 22%, 11%, and 8% of the exvessel value of the chum, pink, coho, sockeye, and Chinook salmon in the commercial common property harvest, respectively.
- Statewide, 57% of the chum, 20% of the pink, 20% of the coho, 7% of the Chinook and 6% of the sockeye salmon harvested in the commercial common property fisheries were of hatchery origin.
- In Southeast, enhanced salmon accounted for 36% of the fish harvested in the commercial common property salmon fishery. Enhanced salmon contributed an estimated \$31 million or 41% of the total harvest value. An estimated 7.8 million enhanced chum salmon were harvested in the commercial common property fishery and had a preliminary exvessel value of \$24 million. Hatchery-origin coho, Chinook, and sockeye salmon harvested in the commercial common property fishery had an estimated value of \$3 and \$2 million, \$1.5 million, respectively.
- In Prince William Sound, 73% of the salmon in the total commercial common property harvest were enhanced fish. Hatcheries contributed 80% of the pinks, 75% of the chums 49% of the coho, and 38% of the sockeye harvested in the commercial common property fishery. Combined, these hatcheries provided over \$19 million or 48% of the value of the commercial common property harvest. Hatchery produced sockeye, pink, chum, and coho salmon contributed about \$7.9, \$5.7, \$3.3, and \$2.2 million to the commercial common property harvest, respectively.
- In Cook Inlet, 30% of the salmon harvested in the commercial common property fisheries were enhanced fish. Enhanced salmon contributed approximately \$6.5 million or 44% of the total value of salmon in the commercial common property harvest. Approximately 55% of the sockeye salmon harvested in the commercial common property fishery were of hatchery origin.
- In Kodiak, 7% of the salmon harvested in the commercial common property harvest were enhanced fish. Enhanced salmon contributed approximately \$2.5 million, or 10% of the value of salmon in the commercial common property harvest. Enhanced coho, chum, sockeye, and pink salmon accounted for approximately 28%, 16%, 7% and 6%, of the commercial common property salmon harvest, respectively.
- Statewide, an estimated 276,966 hatchery-produced fish representing 9 species (Chinook, coho, pink, chum, and sockeye salmon; steelhead, rainbow trout, arctic char and grayling) were harvested by sport anglers.
- Over 61 million fish are projected to return to Alaska hatcheries in 2007.

## **FIGURES AND TABLES**

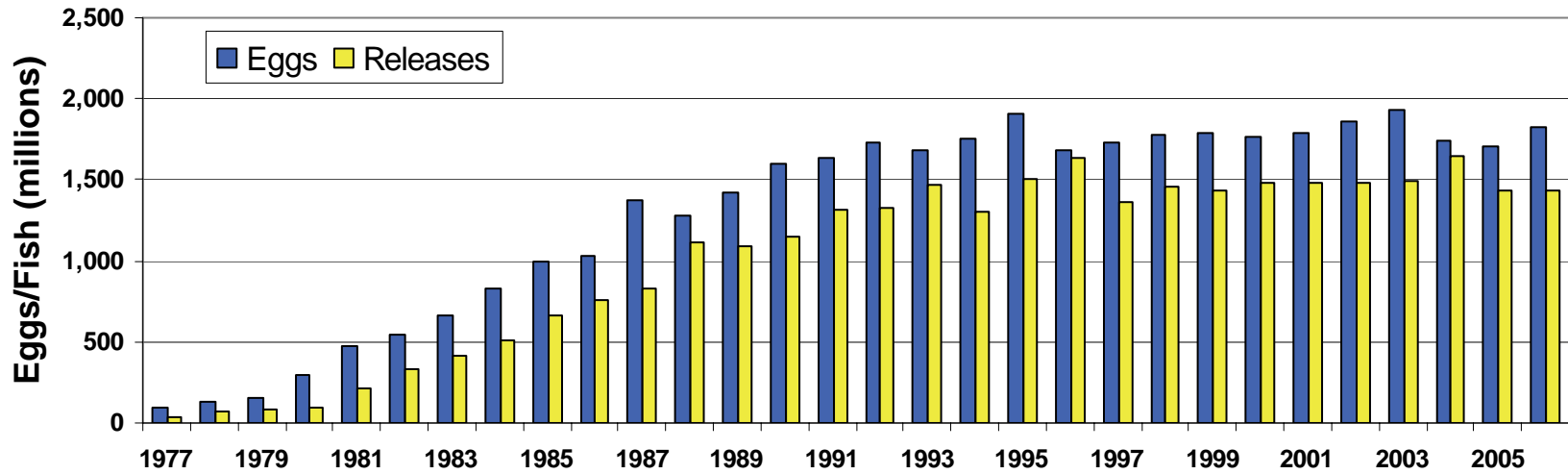


Figure 1.—Total egg-takes and releases in the Alaska salmon hatchery program, 1977 to 2006.

4

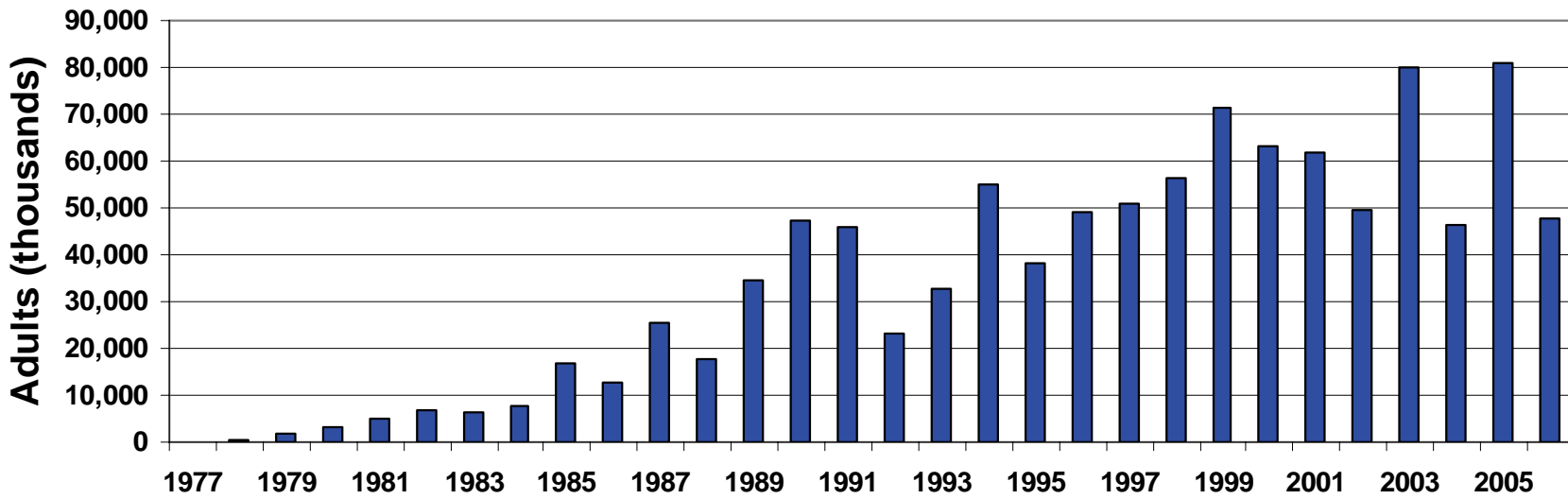
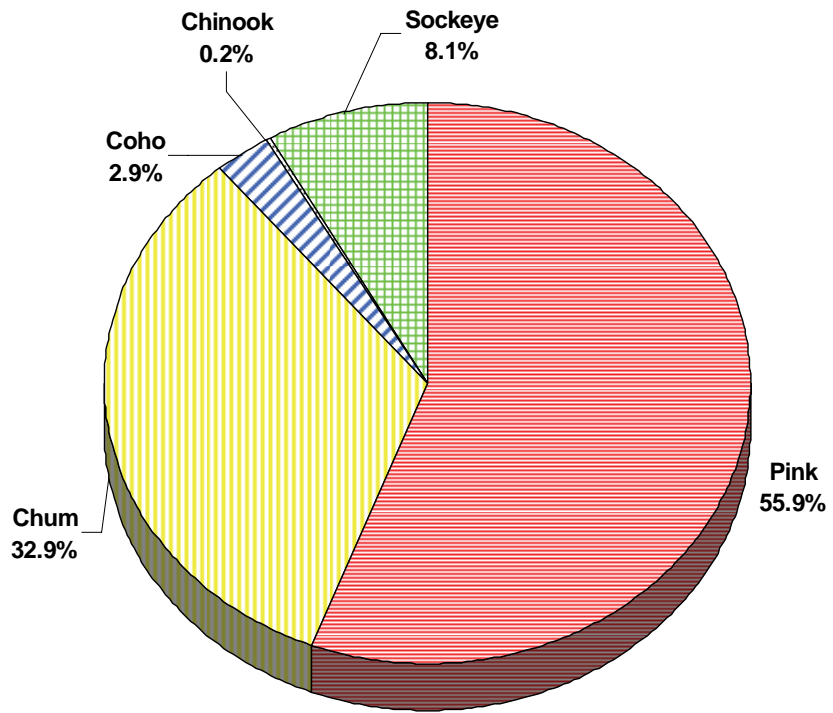


Figure 2.—Total returns in the Alaska salmon hatchery program, 1977 to 2006.



**Figure 3.**—Alaska salmon hatchery returns by species in 2006.

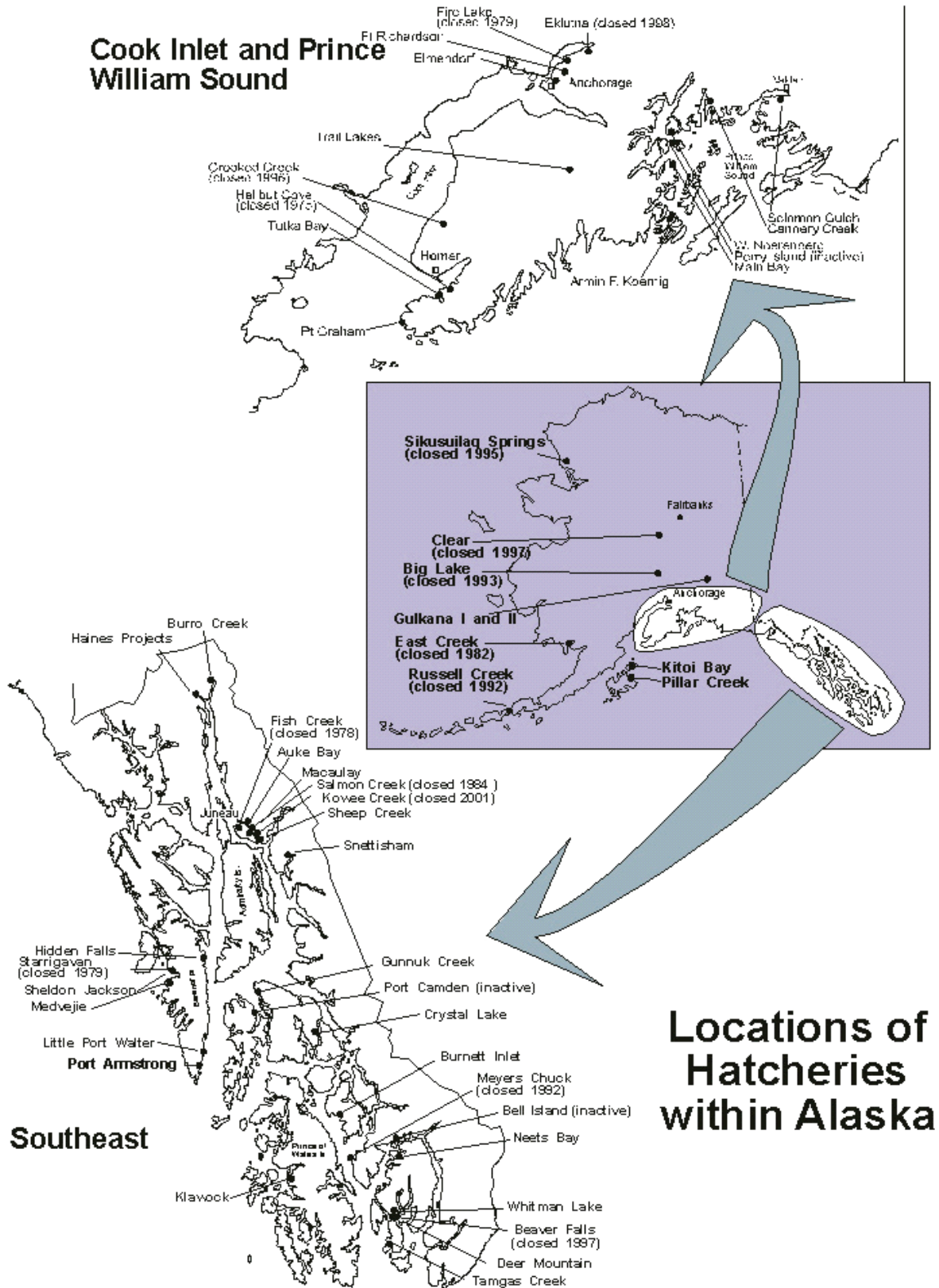


Figure 4.—Locations of hatcheries in Alaska.

**Table 1.**–List of acronyms and abbreviations used throughout this report.

Acronym	Organization
AAC	American Aquaculture Corporation
AAI	Alaska Aquaculture, Inc.
ADF&G	Alaska Department of Fish and Game
AKI	Armstrong-Keta, Inc.
AYK	Arctic-Yukon-Kuskokwim
BCF	Burro Creek Farms, Inc.
CIAA	Cook Inlet Aquaculture Association
COOP	Cooperative projects between state and PNP operators
DCED	Department of Commerce and Economic Development
DIPAC	Douglas Island Pink and Chum, Inc.
DMTH	Deer Mountain Tribal Hatchery
FRED	Fisheries Rehabilitation, Enhancement and Development Division
KNFC	Kake Nonprofit Fisheries Corporation
KRAA	Kodiak Regional Aquaculture Association
MCAA	Meyers Chuck Aquaculture Association
MIC	Metlakatla Indian Community
NMFS	National Marine Fisheries Service
NSRAA	Northern Southeast Regional Aquaculture Association
PGHC	Port Graham Hatchery Corporation
PNP	Private nonprofit
POWHA	Prince of Wales Hatchery Association
PWSAC	Prince William Sound Aquaculture Corporation
SJC	Sheldon Jackson College
SSRAA	Southern Southeast Regional Aquaculture Association
VFDA	Valdez Fisheries Development Association

**Table 2.**—Estimated egg takes from Alaska hatcheries, in millions, 2006.

Area	Pink	Chum	Coho	Chinook	Sockeye	Other	Total
Southeast	87.45	516.54	24.19	13.93	21.97	0.10	664.19
Prince William Sound	673.78	169.74	6.10	0.00	46.31	0.00	895.93
Cook Inlet	20.55	0.00	2.88	2.21	18.21	2.02	45.87
Kodiak/Alaska Peninsula	181.81	29.21	2.38	0.35	6.07	0.00	219.82
Totals <sup>a</sup>	963.60	715.49	35.55	16.49	92.57	2.11	1,825.80

<sup>a</sup> Some figures may not total exactly due to rounding.

**Table 3.**—Estimated releases from Alaska hatcheries, in millions, 2006.

Area	Pink	Chum	Coho	Chinook	Sockeye	Other	Total
Southeast	79.61	375.79	15.50	8.53	13.05	0.02	492.51
Prince William Sound	599.49	146.02	2.56	0.00	28.65	0.00	776.72
Cook Inlet	13.86	0.00	2.38	1.80	6.28	1.12	25.46
Kodiak/Alaska Peninsula	115.66	17.57	1.42	0.03	4.85	0.00	139.54
Totals <sup>a</sup>	808.63	539.37	21.87	10.37	52.84	1.14	1,434.22

<sup>a</sup> Some figures may not total exactly due to rounding.

**Table 4.**—Total returns attributed to Alaska hatcheries and enhancement projects in 2006, including common property, cost recovery, broodstock, and escapement.

Area	Pink	Chum	Coho	Chinook	Sockeye	Other	Total
Southeast	675,867	13,272,193	650,687	87,485	544,128	666	15,231,026
Prince William Sound	21,250,089	2,230,319	472,510	2,075	1,308,816	0	25,263,809
Cook Inlet	284,522	0	78,325	19,691	1,912,880	102,960	2,398,378
Kodiak/Alaska Peninsula	4,491,048	212,526	176,604	400	119,473	0	5,000,051
Totals <sup>a</sup>	26,701,526	15,715,038	1,378,126	109,651	3,885,297	103,626	47,893,264

<sup>a</sup> Some figures may not total exactly due to rounding.



**Table 5.**– Alaska common property commercial harvest of enhanced fish, in thousands, 2006.

Area	Harvest <sup>a</sup>	Chinook	Sockeye	Coho	Pink	Chum	Total
Southeast	Total Commercial Harvest	355	1,330	2,054	11,650	13,931	29,320
	Total Cost Recovery Harvest	16	128	247	229	4,632	5,253
	Common Property Harvest	339	1,202	1,807	11,421	9,299	24,067
	Enhanced Fish Harvested	41	248	318	299	7,777	8,682
	% Enhanced in Total CP Harvest <sup>b</sup>	12.1%	20.6%	17.6%	2.6%	83.6%	36.1%
Prince William Sound	Total Commercial Harvest	31	2,524	677	22,296	2,428	27,956
	Total Cost Recovery Harvest	0	351	16	9,825	835	11,027
	Common Property Harvest	31	2,173	661	12,471	1,593	16,929
	Enhanced Fish Harvested	0	832	324	10,010	1,199	12,366
	% Enhanced in Total CP Harvest <sup>b</sup>	0.0%	38.3%	49.1%	80.3%	75.3%	73.0%
Cook Inlet	Total Commercial Harvest	20	2,438	207	1,864	137	4,666
	Total Cost Recovery Harvest	0	80	2	247	0	328
	Common Property Harvest	20	2,358	205	1,617	137	4,338
	Enhanced Fish Harvested	1	1,288	0	5	0	1,294
	% Enhanced in Total CP Harvest <sup>b</sup>	3.1%	54.6%	0.0%	0.3%	0.0%	29.8%
Kodiak	Total Commercial Harvest	20	1,584	553	31,693	1,081	34,931
	Total Cost Recovery Harvest	0	1	16	2,318	1	2,337
	Common Property Harvest	20	1,583	537	29,375	1,080	32,594
	Enhanced Fish Harvested	0	114	152	1,840	176	2,282
	% Enhanced in Total CP Harvest <sup>b</sup>	0.0%	7.2%	28.3%	6.3%	16.3%	7.0%
Chignik/Aleutian Islands/Alaska Peninsula	Total Commercial Harvest	15	5,109	299	5,701	1,371	12,495
	Enhanced Fish Harvested	0	0	0	0	0	0
	% Enhanced in Total CP Harvest <sup>b</sup>	0.0%	0.0%	0.0%	0.0%	0.0%	0.0%
Bristol Bay	Total Commercial Harvest	106	28,726	53	143	2,000	31,028
	Enhanced Fish Harvested	0	0	0	0	0	0
	% Enhanced in Total CP Harvest <sup>b</sup>	0.0%	0.0%	0.0%	0.0%	0.0%	0.0%
Arctic-Yukon-Kuskokwim	Total Commercial Harvest	71	149	421	1	510	1,152
	Enhanced Fish Harvested	0	0	0	0	0	0
	% Enhanced in Total CP Harvest <sup>b</sup>	0.0%	0.0%	0.0%	0.0%	0.0%	0.0%
Total	Total Commercial Harvest	618	41,860	4,264	73,348	21,458	141,548
	Total Cost Recovery Harvest	16	559	281	12,620	5,469	18,945
	Common Property Harvest	602	41,301	3,983	60,728	15,989	122,603
	Enhanced Fish Harvested	42	2,482	794	12,154	9,152	24,624
	% Enhanced in Total CP Harvest <sup>b</sup>	6.9%	6.0%	19.9%	20.0%	57.2%	20.1%

<sup>a</sup> Total commercial harvest includes fish caught by all commercial gear types, which includes cost recovery harvested fish.

<sup>b</sup> CP = common property.

**Table 6.**—Preliminary estimated value of the total Alaska common property commercial harvest, in thousands of dollars, 2006.

Area	Chinook	Sockeye	Coho	Pink	Chum	Total
Southeast	\$17,272	\$7,432	\$17,400	\$5,509	\$29,031	\$76,643
Prince William Sound	\$3,249	\$20,584	\$4,427	\$7,103	\$4,379	\$39,742
Cook Inlet	\$575	\$11,862	\$1,196	\$782	\$273	\$14,689
Kodiak	\$196	\$6,135	\$2,802	\$13,043	\$2,452	\$24,627
Chignik/Aleutian Islands/Alaska Peninsula	\$148	\$16,141	\$587	\$1,754	\$1,455	\$20,085
Bristol Bay	\$1,366	\$90,986	\$163	\$30	\$1,370	\$93,915
Arctic-Yukon-Kuskokwim	\$3,808	\$456	\$934	\$1	\$573	\$5,771
Totals <sup>a</sup>	\$26,614	\$153,596	\$27,510	\$28,221	\$39,533	\$275,473

<sup>a</sup> Data from the Alaska Department of Fish and Game website: <http://www.state.ak.us/adfg/geninfo/salmon;salmhome.htm>. Accessed 1/30/2007. Preliminary figures may not total exactly due to rounding.

**Table 7.**—Salmon fishery enhancement program timeline of events.

Year	Event	No. of state hatcheries	No. private nonprofit (PNP) hatcheries	No. of Federal hatcheries
1934	Federal research station Little Port Walter constructed			1
1950	Federal hatchery at Auke Creek constructed			2
1953	1 territorial hatchery constructed at Kitoi Bay	1		
1954	1 territorial hatchery constructed at Deer Mountain	2		
1958	1 territorial hatchery constructed at Ft. Richardson	3		
1965	1 state hatchery constructed at Fire Lake	4		
1969	1 state hatchery constructed at Crystal Lake	5		
1971	Fisheries Rehabilitation, Enhancement and Development (FRED) Division created by Legislature			
1973	2 state hatcheries constructed (Crooked Creek and Gulkana) State enhancement projects at Starrigavan and Halibut Cove started	7		
1974	2 state hatcheries constructed (Beaver Falls and East Creek) Legislature authorizes permits for private nonprofit hatchery operators to salmon ranch	9		
1975	4 PNP permits issued [Sheldon Jackson (#3), Port San Juan (#2), Perry Island (#1), and Sandy Bay (#4)] 2 state hatcheries constructed (Big Lake and Tutka)	11	4	
1976	AS 16.10.375 passed, designating regions for regional planning teams and enhancing salmon 1 state hatchery constructed at Elmendorf 2 PNP permits issued [Burnett Inlet (#5) and Kowee Creek (#6)]	12	6	
1977	1 PNP permit issued to Gunnuk Creek (#7) 2 state hatcheries constructed (Klawock and Russell Creek) State enhancement project at Karluk Lake started	14	7	
1978	1 PNP permit issued to Whitman Lake (#8) 2 state hatcheries constructed (Cannery Creek and Hidden Falls)	16	8	
1979	3 PNP permits issued [Sheep Creek (#11), Meyers Chuck (#10), Salmon Creek (#9)] 1 state hatchery constructed (Snettisham) 1 state hatchery closed (Fire Lake)	17 16	11	
1980	1 PNP permit issued to Burro Creek (#12) 2 state hatcheries constructed (Clear and Main Bay) 1 hatchery at Tamgas Creek constructed (Metlakatla Indian Community/BIA)	18	12	
1981	1 state hatchery closed (East Creek)	17		3

-continued-

**Table 7.**—Page 2 of 3.

Year	Event	No. of state hatcheries	No. private nonprofit (PNP) hatcheries	No. of Federal hatcheries
	2 state hatcheries constructed (Sikusuilag and Trail Lakes)	19		
	4 PNP permits issued [Medvejie (#16), Port Armstrong (#13), Solomon Gulch (#15), Salmon Creek (#14)]		16	
	1 PNP permit revoked [Salmon Creek (#9)]		15	
1982	2 PNP permits issued [Eklutna (#17) and Favorite Bay (#18)]		17	
1983	3 PNP permits issued [Neets Bay (#19), Crittenden Creek (#22), and Esther (#20)]		20	
	1 state hatchery completed (Broodstock Development Center)	20		
1984	1 PNP permit issued to Santa Anna (#21)		21	
1985	1 PNP permit issued to Port Camden (#23)		22	
1986	1 PNP permit issued to Beaver Falls (#24)		23	
1987	1 PNP permit issued to Gastineau (#25)		24	
1988	Aquatic Farm Act signed; statute passes allowing contracting of hatchery operations			
	4 state hatcheries contracted to private sector (Kitoi Bay, Trail Lakes, Cannery Creek, Hidden Falls)	16		
	4 PNP permits issued [Hidden Falls (#28), Cannery Creek (#26), Trail Lakes (#27), Kitoi Bay (#29)]		28	
	1 state hatchery constructed (Pillar Creek)	17		
	2 PNP permits revoked [Sandy Bay (#4) and Salmon Creek (#14)]		26	
1990	CSHB432 becomes law prohibiting finfish farming in Alaska			
	1 PNP permit issued to Bell Island (#30)		27	
1991	5 state hatcheries contracted to private sector [Main Bay (#31), Tutka, Gulkana (#39), Pillar Creek (#38), and Beaver Falls(#24)] — Beaver Falls and Tutka tallied elsewhere	12	30	
	Portions of 6 state hatcheries paid for by private or federal funds			
1992	1 state hatchery closed (Russell Creek)	11		
	2 PNP permits issued [Haines projects (#34) and Port Graham (#33)]		32	
	1 PNP permit revoked [Meyers Chuck (#10)]		31	
	FRED Division merged with the Commercial Fisheries Division to form the Commercial Fisheries Management and Development (CFMD) Division			3
1993	3 state hatcheries transferred from CFMD to Sport Fish Division (Broodstock Development Center, Elmendorf, and Ft. Richardson)			

-continued-

**Table 7.**—Page 3 of 3.

Year	Event	No. of state hatcheries	No. private nonprofit (PNP) hatcheries	No. of Federal hatcheries
	2 state hatcheries contracted to private sector (Crooked Creek and Klawock)	9		
	1 state hatchery closed (Big Lake)	8		3
1994	4 PNP permits issued [Tutka (#32), Crooked Creek (#35), Klawock (#36), Deer Mountain (#37)]		35	
	1 state hatchery contracted (Deer Mountain)	7		
	Ft. Richardson Hatchery merged with Broodstock Development Center	6		
1995	1 PNP hatchery under new management [Klawock (#38)]			
	1 state hatchery transferred from CFMD Division to Sport Fish Division (Crystal Lake)			
	1 state hatchery closed (Sikusuilag)	5		
1996	1 state hatchery contracted [Snettisham (#39)]	4	36	
	1 state hatchery transferred from CFMD Division to Sport Fish Division (Clear)			
	3 PNP permits revoked [Crittenden Creek (#22), Santa Anna (#21), and Favorite Bay (#18)]		33	
1997	1 state hatchery closed (Clear)	3		
	2 state contracted (PNP) hatcheries closed [Beaver Falls (#24), Crooked Creek (#35)]		31	
	1 PNP hatchery closed & reopened under new management [Burnett Inlet (#5, now #40)]		31	
1998	1 PNP hatchery closed [Eklutna (#17)]		30	
2000	1 state hatchery contracted to private sector (Crystal Lake Hatchery)	2	31	
	Port Camden hatchery permit (# 23) given up		30	3
2001	Kowee Creek hatchery permit (#6) given up; 1 Federal hatchery inactivated (Auke Creek)	2	29	2
2002	No activity	2	29	2
2003	No activity	2	29	2
2004	1 PNP hatchery permit issued [Port St. Nicholas (#43)]	2	30	2
2005	No activity	2	30	2
2006	No activity	2	30 <sup>a</sup>	2

<sup>a</sup>Perry Island, Bell Island, and Burro Creek are not active.

**Table 8.**—Eggs taken at Alaska hatcheries in 2006, in millions of eggs (transferred eggs are listed with the receiving hatchery).

Area/Operator/Location		Pink	Chum	Coho	Chinook	Sockeye	Other	Total
Southeast								
SSRAA	Whitman Lake		39.82	2.31	1.17			43.30
	Neets Bay		111.33	2.34				113.66
	Burnett Inlet			1.99		0.12		2.10
	Crystal Lake			0.23	2.11			2.34
NSRAA	Hidden Falls		95.65	5.18	1.58			102.40
	Medvejie Creek	0.66	56.89	0.23	4.96			62.75
	Haines projects		3.77					3.77
AKI	Port Armstrong	85.62	19.29	3.01	1.35			109.27
DIPAC	Macaulay <sup>a</sup>		123.14	0.90	0.78			124.82
	Snettisham					21.70		21.70
KTHC	Deer Mountain			0.12	0.15		0.01	0.27
KNFC	Gunnuk Creek		45.88	0.03				45.91
POWHA	Klawock			5.04			0.01	5.05
	Port Saint Nicholas				0.62			0.62
SJC	Sheldon Jackson	1.17	10.55	0.24	0.07			12.03
MIC	Tamgas Creek		10.23	2.58	0.35	0.16		13.32
NMFS	Little Port Walter				0.79		0.08	0.87
	Southeast Totals <sup>b</sup>	87.45	516.54	24.19	13.93	21.97	0.10	664.19
Prince William Sound								
PWSAC	Armin F. Koernig	195.05						195.05
	Wally Noerenberg	91.77	169.74	3.81				265.32
	Cannery Creek	151.88						151.88
	Main Bay					10.10		10.10
	Gulkana					36.21		36.21
VFDA	Solomon Gulch	235.08		2.29				237.38
	Prince William Sound Totals <sup>b</sup>	673.78	169.74	6.10	0.00	46.31	0.00	895.93
Cook Inlet								
PGHC	Port Graham	20.55						20.55
CIAA	Trail Lakes			1.08		18.21		19.29
ADF&G	Ship Creek Complex			1.79	2.21		2.02	6.02
	Cook Inlet Totals <sup>b</sup>	20.55	0.00	2.88	2.21	18.21	2.02	45.87
Kodiak								
KRAA	Kitoi Bay	181.81	29.21	2.29		0.72		214.02
	Pillar Creek			0.09	0.35	5.35		5.79
	Kodiak Totals <sup>b</sup>	181.81	29.21	2.38	0.35	6.07	0.00	219.82
Statewide Totals <sup>b</sup>		963.60	715.49	35.55	16.49	92.57	2.11	1,825.80

<sup>a</sup> Burro Creek and Sheep Creek egg takes are listed under Macaulay Hatchery.

<sup>b</sup> Some figures may not total exactly due to rounding.

**Table 9.**—Alaskan hatchery releases in 2006, in millions of fish.

Area/Operator/Location		Pink	Chum	Coho	Chinook	Sockeye	Other	Total	
Southeast <sup>a</sup>									
SSRAA	Whitman Lake			0.31	0.72			1.03	
	Kendrick Bay		20.84					20.84	
	Nakat Inlet		8.41	0.29				8.70	
	Anita Bay		4.22	0.22				4.44	
	Neets Bay			0.62	0.25			0.86	
	Neets Bay		58.17	2.46				60.63	
	Anita Bay		18.27					18.27	
	Burnett Inlet			0.22		0.20		0.42	
	Neck Lake			1.37		0.14		1.51	
	Crystal Lake			0.14	0.68			0.82	
	Neets Bay				0.40			0.40	
	Anita Bay				0.44			0.44	
	NSRAA	Hidden Falls		44.27	2.80	1.05			48.13
		Takatz Bay		41.93					41.93
Mist Cove				0.26				0.26	
Medvejie									
Deep Inlet			45.68	0.12	0.84			46.63	
Bear Cove		0.29	9.19	0.01	2.72			12.21	
Mist Cove				0.02				0.02	
Haines projects			1.75					1.75	
AKI		Port Armstrong	78.17	3.88	2.62	0.27		84.94	
DIPAC		Macaulay (Gastineau)		11.34	0.60	0.21			12.14
	Sheep Creek		23.55		0.10			23.66	
	Amalga Harbor		34.64					34.64	
	Boat Harbor		13.68					13.68	
	Limestone Inlet		14.15					14.15	
	Skagway				0.07			0.07	
	Fish Cr/Auke Bay/Twin L				0.29			0.29	
	Snettisham					7.59		7.59	
	Sweetheart Lake					0.24		0.24	
	Tahltn/Tuya Lakes					3.42		3.42	
	Tatsamenie Lake					1.47		1.47	
KTHC	Deer Mountain			0.10	0.03		0.01	0.13	
KNFC	Gunnuk Creek		3.83	0.01				3.84	
	Southeast Cove		4.20	0.004				4.20	
SJC	Sheldon Jackson	1.15	1.07	0.07	0.01			2.30	
	Deep Inlet <sup>b</sup>		5.10					5.10	
MIC	Tamgas Creek		7.62	1.97	0.36			9.94	
POWHA	Klawock			1.30				1.30	
NMFS	Little Port Walter				0.08		0.01	0.09	
Southeast Totals <sup>c</sup>		79.61	375.79	15.50	8.53	13.05	0.02	492.51	

-continued-

**Table 9.**–Page 2 of 2.

Area/Operator/Location		Pink	Chum	Coho	Chinook	Sockeye	Other	Total
<b>Prince William Sound</b>								
PWSAC	Armin F. Koernig	159.62						159.62
	Wally Noerenberg	84.80	90.40	0.87				176.06
	Port Chalmers		39.82					39.82
	Whittier			0.10				0.10
	Cordova			0.04				0.04
	Chenega			0.05				0.05
	Sawmill Bay		15.80					15.80
	Gulkana I and II							
	Paxson Lake					5.52		5.52
	Crosswind Lake					10.02		10.02
	Summit Lake					4.68		4.68
	Cannery Creek	138.16						138.16
	Main Bay					8.43		8.43
	VFDA	Solomon Gulch	216.92		1.51			
<b>Prince William Sound Totals<sup>c</sup></b>		<b>599.49</b>	<b>146.02</b>	<b>2.56</b>	<b>0.00</b>	<b>28.65</b>	<b>0.00</b>	<b>776.72</b>
<b>Cook Inlet</b>								
PGHC	Port Graham <sup>d</sup>	13.86				0.50		14.36
CIAA	Trail Lakes							
	Bear Creek			0.56		3.39		3.96
	Hidden Lake					0.58		0.58
	Leisure Lake					0.68		0.68
	Lowell Creek			0.15				0.15
	Meadow Creek					0.87		0.87
	Homer Spit			0.32				0.32
	Seldovia			0.11				0.11
	Tutka Bay					0.26		0.26
	ADF&G	Ship Creek Complex			1.24	1.80		1.12
<b>Cook Inlet Totals<sup>c</sup></b>		<b>13.86</b>	<b>0.00</b>	<b>2.38</b>	<b>1.80</b>	<b>6.28</b>	<b>1.12</b>	<b>25.46</b>
<b>Kodiak</b>								
KRAA	Kitoi Bay	115.66	17.57	0.98				134.21
	Crescent Lake			0.12				0.12
	Jennifer Lake			0.20				0.20
	Katmai			0.02				0.02
	Little Kitoi					0.59		0.59
	Ruth Lake			0.03				0.03
	Pillar Creek							
	Abercrombie Lake			0.003				0.003
	Big Waterfall Lake					0.08		0.08
	Big Lake			0.01				0.01
	Crescent Lake					0.24		0.24
	Dark Lake			0.004				0.004
	Hidden Lake					0.42		0.42
	Island Lake			0.03				0.03
	Jennifer Lake					0.02		0.02
	Little Waterfall Lake					0.18		0.18
	Malina Lake					0.08		0.08
	Margaret Lake			0.003				0.003
	Mission Lake			0.01				0.01
	Monaska River			0.01	0.03			0.04
	Potato Lake			0.01				0.01
	Ruth Lake					0.05		0.05
Spiridon Lake					3.20		3.20	
<b>Kodiak Totals<sup>c</sup></b>		<b>115.66</b>	<b>17.57</b>	<b>1.42</b>	<b>0.03</b>	<b>4.85</b>	<b>0.00</b>	<b>139.54</b>
<b>Statewide Totals<sup>c</sup></b>		<b>808.63</b>	<b>539.37</b>	<b>21.87</b>	<b>10.37</b>	<b>52.84</b>	<b>1.14</b>	<b>1,434.22</b>

<sup>a</sup> No releases were made from Bell Island or Burro Creek hatcheries.

<sup>b</sup> Chum were reared at Medvejie.

<sup>c</sup> Some figures may not total exactly due to rounding.

<sup>d</sup> Sockeye were reared at Trail Lakes.



**Table 10.**—Estimated adult returns by species to Alaska enhancement projects in 2006, including common property harvests, as reported by operators.

Area/Operator/Location		Pink	Chum	Coho	Chinook	Sockeye	Other	Total
<b>Southeast</b>								
SSRAA	Whitman Lake		1,948,250	53,284	13,186			2,014,720
	Neets Bay		1,676,600	68,531	12,230			1,757,361
	Burnett Inlet			40,979		47,341		88,320
	Crystal Lake			4,032	9,335			13,367
	Anita Bay				13,370			13,370
NSRAA	Hidden Falls		2,185,079	226,282	10,403			2,421,764
	Medvejie	3,347	2,273,951	94,950	11,140			2,383,388
	Haines projects		5,722					5,722
AKI	Port Armstrong	631,060	7,561	37,904	1,816			678,341
DIPAC	Macaulay		4,728,024	28,326	3,061			4,759,411
	Snettisham					480,085		480,085
	Sheep Creek <sup>a</sup>							
KNFC	Gunnuk Creek		318,198	538				318,736
SJC	Indian River	41,460	34,811	6,957	34			83,262
POWHA	Klawock			36,170		14,871		51,041
MIC	Tamgas Creek		93,997	48,934	5,592	1,831		150,354
	Little Port Walter				6,632		643	7,275
KTHC	Deer Mountain			3,800	686		23	4,509
	Southeast Totals	675,867	13,272,193	650,687	87,485	544,128	666	15,231,026
<b>Prince William Sound</b>								
PWSAC	Armin F. Koernig	5,210,424						5,210,424
	Wally Noerenberg	4,065,035	2,230,319	177,501				6,472,855
	Cannery Creek	2,915,048						2,915,048
	Main Bay					1,035,876		1,035,876
	Gulkana					272,940		272,940
ADF&G	Ship Creek Complex				2,075			2,075
VFDA	Solomon Gulch	9,059,582		295,009				9,354,591
	Prince William Sound Totals	21,250,089	2,230,319	472,510	2,075	1,308,816	0	25,263,809
<b>Cook Inlet</b>								
PGHC	Port Graham	284,522						284,522
CIAA	Trail Lakes			4,157		1,912,880		1,917,037
ADF&G	Ship Creek Complex			74,168	19,691		102,960	196,819
	Cook Inlet Totals	284,522	0	78,325	19,691	1,912,880	102,960	2,398,378
<b>Kodiak</b>								
KRAA	Kitoy Bay	4,491,048	212,526	175,004		29,410		4,907,988
	Pillar Creek			1,600	400	90,063		92,063
	Kodiak Totals	4,491,048	212,526	176,604	400	119,473	0	5,000,051
<b>Statewide Totals</b>		<b>26,701,526</b>	<b>15,715,038</b>	<b>1,378,126</b>	<b>109,651</b>	<b>3,885,297</b>	<b>103,626</b>	<b>47,893,264</b>

<sup>a</sup> Sheep Creek returns are listed under Macaulay hatchery.

**Table 11.**—Projected adult returns, by species, to Alaska enhancement projects in 2006.

Area/Operator/Location	Pink	Chum	Coho	Chinook	Sockeye	Other	Total	
Southeast								
SSRAA	Whitman Lake		25,000	15,000			40,000	
	Nakat Inlet	195,000	30,000				225,000	
	Anita Bay	300,000	25,000	7,000			332,000	
	Kendrick Bay	1,500,000					1,500,000	
	Long Lake			2,500			2,500	
	Neets Bay	2,410,000	280,000	15,000			2,705,000	
	Burnett Inlet		10,000		1,000		11,000	
	Neck Lake		75,000		4,500		79,500	
	Crystal Lake		3,500	7,600			11,100	
NSRAA	Hidden Falls	2,470,000	245,000	11,200			2,726,200	
	Medvejie Creek	1,630,000	10,300	16,000			1,656,300	
	Haines projects	21,410					21,410	
AKI	Port Armstrong	2,885,016	174,617	261,606	1,998		3,323,237	
DIPAC	Macaulay (Gastineau )							
	Gastineau Channel	2,194,000	36,000	3,800			2,233,800	
	Amalga Harbor	1,598,000					1,598,000	
	Boat Harbor	545,000					545,000	
	Limestone Inlet	130,000					130,000	
	Pullen Creek			600			600	
	Snettisham				193,000		193,000	
	Sweetheart Lake				4,600		4,600	
	Taku River*							
	Stikine River*							
KTHC	Deer Mountain		3,231	983		28	4,242	
KNFC	Gunnuk Creek	136,495	670				137,165	
	Southeast Cove	753,495					753,495	
SJC	Indian River/Deep Inlet	46,171	144,761	6,957	87		197,976	
Federal	Little Port Walter			1,500		300	1,800	
MIC	Tamgas	118,000	130,000	4,000	4,200		256,200	
POWHA	Klawock		39,056		14,583		53,639	
Southeast Totals		2,931,187	14,320,778	1,181,320	87,268	221,883	328	18,742,764
Prince William Sound								
PWSAC	Armin F. Koernig	7,200,000					7,200,000	
	Wally Noerenberg	4,500,000	3,505,000	78,000			8,083,000	
	Cannery Creek	6,200,000					6,200,000	
	Main Bay				952,000		952,000	
	Gulkana				311,000		311,000	
VFDA	Solomon Gulch	12,169,280		161,740			12,331,020	
Prince William Sound Totals		30,069,280	3,505,000	239,740	0	1,263,000	0	35,077,020
Cook Inlet								
PGHC	Port Graham	277,274			6,500		283,774	
CIAA	Trail Lakes							
	Hazel/Leisure				105,500		105,500	
	Kirschner Lake				23,600		23,600	
	Hidden Lake				62,000		62,000	
	Bear Lake*			11,800			11,800	
	Tustumena Lake				1,432,000		1,432,000	
ADF&G	Ship Creek Complex <sup>a</sup>		74,168	20,704		101,461	196,333	
Cook Inlet Totals		277,274	0	85,968	20,704	1,629,600	101,461	2,115,007
Kodiak								
KRAA	Kitoy Bay	4,711,684	253,843	157,361		71,930	5,194,818	
	Pillar Creek			1,600	440	333,585	335,625	
Kodiak Totals		4,711,684	253,843	158,961	440	405,515	0	5,530,443
Statewide Totals		37,989,425	18,079,621	1,665,989	108,412	3,519,998	101,789	61,465,234

\* Sockeye projection was not available in time for publication.

<sup>a</sup> Ship Creek Complex is the combination of Elmendorf Hatchery and Fort Richardson Hatchery.

**Table 12.**—Cumulative state loans made to PNP salmon hatchery corporations and enhancement funds returned to associations.

Region/Corporation (number of permits)	State Loans					Enhancement Funds Generated Through Assessments and Returned to Associations via Contract		2006 Reported Revenues <sup>b</sup>
	For Capital Construction		For Operations		Cumulative Repayments <sup>a</sup>	FY 2007	Cumulative	
	FY 2006	Cumulative	FY 2006	Cumulative				
Southern Southeast								
SSRAA (Southern Southeast Regional Aquaculture Association) – (4) <sup>c</sup>		\$10,663,000	\$700,000	\$7,349,196	\$21,920,567	\$898,421	\$34,564,839	\$ 7,022,627
POWHA (Prince of Wales Hatchery Association) - (1)		\$496,000		\$1,870,000	\$0		\$0	\$ 137,171
KTHC (Ketchikan Tribal Hatchery Corporation) - (1)							\$0	\$ 126,975
Northern Southeast								
NSRAA (Northern Southeast Regional Aquaculture Association) – (3) <sup>c</sup>		\$2,787,765		\$4,615,544	\$5,963,695	\$1,281,430	\$28,408,810	\$ 3,423,234
AKI (Armstrong-Keta, Inc.) — (1)		\$4,302,645		\$6,058,095	\$2,872,883		\$0	\$ 357,687
BCF (Burro Creek Farms, Inc.) — (1)		\$143,500		\$290,875	\$608,708		\$0	\$ 0
DIPAC (Douglas Island Pink and Chum, Inc.) - (3)		\$9,364,000		\$13,664,000	\$8,058,655		\$0	\$ 8,856,115
KNFC (Kake Nonprofit Fisheries Corporation) - (1)		\$2,858,724		\$6,128,883	\$656,205		\$0	\$ 523,101
SJC (Sheldon Jackson College) — (1)		\$423,624			\$723,476		\$0	\$ 90,000
Prince William Sound								
PWSAC (Prince William Sound Aquaculture Association) – (5) <sup>d</sup>		\$24,475,419		\$8,585,500	\$22,555,521	\$906,274	\$17,193,636	\$10,374,654
VFDA (Valdez Fisheries Development Association) - (1)		\$5,950,310		\$8,024,246	\$11,402,632		\$0	\$ 3,295,987
Cook Inlet								
PGHC (Port Graham Hatchery Corporation) - (1)		\$1,107,000	\$363,045	\$1,479,034	\$45,864		\$0	\$ 145,149
CIAA (Cook Inlet Aquaculture Association) - (3) <sup>d</sup>		\$1,576,381		\$2,983,369	\$2,511,539	\$656,099	\$21,609,057	\$ 2,232,574
Kodiak								
KRAA (Kodiak Regional Aquaculture Association) - (2) <sup>d,e</sup>		\$454,700			\$164,448	\$590,222	\$13,305,494	\$ 1,917,003
Chignik								
CRAA (Chignik Regional Aquaculture Association) - (0) <sup>d</sup>						\$134,387	\$3,387,404	\$ 0
Statewide Totals		\$64,603,068	\$1,063,045	\$61,048,742		\$4,466,833	\$118,469,240	\$38,502,277

Source: as reported in Department of Community and Economic Development, Division of Investments - Fisheries Enhancement Revolving Loan Fund Program Overview.

<sup>a</sup> Total repayments received and applied over the life of the loan relationship.

<sup>b</sup> Preliminary data includes: cost recovery, carcass sales, rentals, donations, etc.

<sup>c</sup> A 3% mandatory assessment tax was collected from commercial fishermen.

<sup>d</sup> A 2% mandatory assessment tax was collected from commercial fishermen.

<sup>e</sup> Revenue reported as of 6/30/2006.

**Table 13.**—Summary of anadromous salmon production (all species) from Alaska hatcheries and enhancement projects.

Year	Egg Takes (millions)	Fry Releases (millions)	Total Returns (thousands)	Year	Egg Takes (millions)	Fry Releases (millions)	Total Returns (thousands)
1966	NA	1	0	1987	1,369	824	25,354
1967	NA	1	0	1988	1,280	1,114	17,820
1968	NA	1	0	1989	1,418	1,087	34,530
1969	NA	1	0	1990	1,603	1,154	47,422
1970	NA	1	0	1991	1,634	1,319	46,109
1971	NA	1	0	1992	1,725	1,323	23,187
1972	NA	2	0	1993	1,685	1,475	32,609
1973	2	0	0	1994	1,758	1,302	55,172
1974	8	3	0	1995	1,913	1,503	38,062
1975	36	11	18	1996	1,687	1,638	49,229
1976	61	13	38	1997	1,734	1,363	50,839
1977	100	41	176	1998	1,776	1,453	56,468
1978	133	75	337	1999	1,791	1,435	71,276
1979	152	87	1,967	2000	1,762	1,476	62,960
1980	292	96	3,024	2001	1,792	1,481	61,729
1981	475	212	4,885	2002	1,862	1,484	49,345
1982	548	331	6,939	2003	1,927	1,494	80,049
1983	668	412	6,560	2004	1,741	1,651	46,448
1984	829	506	7,689	2005	1,707	1,428	80,973
1985	995	659	16,650	2006	1,824	1,433	47,790
1986	1,026	762	12,808	Total	36,466	28,455	977,861

**Table 14.**—Summary of pink salmon production from Alaska hatcheries and enhancement projects.

Year	Egg Takes (millions)	Fry Releases (millions)	Total Returns (thousands)	Year	Egg Takes (millions)	Fry Releases (millions)	Total Returns (thousands)
1974	5	0		1991	998	862	38,132
1975	15	5	18	1992	1,077	797	14,879
1976	23	4	16	1993	1,031	919	20,693
1977	66	18	175	1994	1,076	790	41,489
1978	79	50	321	1995	1,162	921	25,415
1979	91	60	1,591	1996	929	999	29,298
1980	174	64	2,310	1997	1,064	772	33,956
1981	328	135	4,371	1998	1,121	873	38,651
1982	344	218	6,610	1999	1,092	878	51,973
1983	406	264	5,939	2000	1,074	880	40,395
1984	443	332	5,298	2001	1,097	942	47,247
1985	604	366	14,158	2002	1,168	938	30,835
1986	511	484	9,044	2003	1,105	962	59,774
1987	840	443	21,960	2004	960	965	30,564
1988	736	730	13,838	2005	950	808	69,076
1989	975	675	31,754	2006	964	809	26,702
1990	1,014	811	41,207				

**Table 15.**—Summary of chum salmon production from Alaska hatcheries and enhancement projects.

Year	Egg Takes (millions)	Fry Releases (millions)	Total Returns (thousands)	Year	Egg Takes (millions)	Releases (millions)	Total Returns (thousands)
1974	1	0		1991	480	365	2,181
1975	5	1		1992	510	428	3,089
1976	7	2		1993	496	469	6,709
1977	8	3	1	1994	529	407	8,996
1978	12	4	3	1995	596	473	9,808
1979	24	7	6	1996	590	535	16,353
1980	74	13	16	1997	524	485	12,595
1981	87	46	53	1998	517	479	13,468
1982	126	63	153	1999	571	461	15,072
1983	170	86	301	2000	576	508	18,698
1984	269	108	1,809	2001	564	468	9,167
1985	244	201	1,404	2002	549	451	12,565
1986	374	182	1,931	2003	681	436	13,711
1987	380	298	1,930	2004	669	578	10,932
1988	392	288	2,490	2005	626	549	7,553
1989	293	310	1,347	2006	715	539	15,715
1990	450	241	2,039				

**Table 16.**—Summary of coho salmon production from Alaska hatcheries and enhancement projects.

Year	Egg Takes (millions)	Fry Releases (millions)	Total Returns (thousands)	Year	Egg Takes (millions)	Fry Releases (millions)	Total Returns (thousands)
1966	NA	1		1987	26	15	451
1967	NA	1		1988	28	19	251
1968	NA	1		1989	23	16	489
1969	NA	1		1990	22	18	940
1970	NA	1		1991	23	14	1,251
1971	NA	0		1992	21	14	1,378
1972	NA	2		1993	25	15	915
1973	NA	2		1994	28	18	1,306
1974	NA	2		1995	27	21	1,312
1975	7	4	0	1996	30	21	1,087
1976	5	3	22	1997	36	23	1,456
1977	5	5		1998	30	21	1,365
1978	5	3		1999	26	22	1,553
1979	4	3	49	2000	28	19	1,631
1980	4	2	21	2001	29	21	1,799
1981	8	3	55	2002	36	20	2,120
1982	16	3	108	2003	35	23	1,563
1983	17	9	96	2004	34	27	1,203
1984	21	11	179	2005	34	22	1,444
1985	20	15	308	2006	36	22	1,378
1986	24	13	647				

**Table 17.**—Summary of Chinook salmon production from Alaska hatcheries and enhancement projects.

Year	Egg Takes (millions)	Fry Releases (millions)	Total Returns (thousands)	Year	Egg Takes (millions)	Fry Releases (millions)	Total Returns (thousands)
1966	NA	0		1987	17	8	93
1967	NA	1		1988	18	9	75
1968	NA	0		1989	15	8	76
1969	NA	0		1990	17	10	116
1970	NA	0		1991	20	7	172
1971	NA	0		1992	13	10	131
1972	NA	0		1993	12	12	112
1973	NA	0		1994	13	10	126
1974	0	1		1995	14	7	171
1975	1	0		1996	11	7	171
1976	1	0		1997	12	7	150
1977	3	1		1998	13	8	104
1978	2	1	0	1999	12	8	112
1979	2	1	3	2000	11	9	159
1980	3	1	7	2001	13	10	188
1981	1	1	5	2002	16	8	157
1982	3	1	12	2003	12	9	170
1983	7	2	13	2004	15	9	194
1984	10	4	21	2005	16	9	139
1985	19	4	26	2006	16	10	110
1986	16	6	40				

**Table 18.**—Summary of sockeye salmon production from Alaska hatcheries and enhancement projects.

Year	Egg Takes (millions)	Fry Releases (millions)	Total Returns (thousands)	Year	Egg Takes (millions)	Fry Releases (millions)	Total Returns (thousands)
1972	NA	0		1990	100	74	3,120
1973	2	0		1991	113	70	4,373
1974	2	1		1992	104	74	3,710
1975	8	1		1993	122	61	4,180
1976	24	2		1994	112	77	3,255
1977	19	14	0	1995	115	81	1,356
1978	35	16	13	1996	127	75	2,320
1979	30	17	318	1997	98	75	2,682
1980	38	15	670	1998	95	72	2,879
1981	51	28	401	1999	91	67	2,566
1982	59	45	56	2000	74	60	2,076
1983	68	53	210	2001	89	39	3,328
1984	86	52	382	2002	93	67	3,668
1985	108	73	754	2003	94	64	4,831
1986	101	77	1,146	2004	63	72	3,554
1987	107	60	920	2005	82	39	2,761
1988	107	69	1,166	2006	93	53	3,885
1989	112	77	864				

**Table 19.**—Summary of statewide salmon production from private nonprofit hatcheries in Alaska, as reported by operators.

Year	Egg take (millions)	Fry release (millions)	Total return (thousands)	Cost recovery (thousands)	Cost recovery revenue <sup>a</sup>
1975	8				
1976	17	4			
1977	37	12	160	109	
1978	37	27	161	215	
1979	54	29	357	253	\$272,000
1980	126	36	1,506	346	\$482,000
1981	224	102	2,564	856	\$1,274,640
1982	234	127	5,341	1,364	\$1,170,000
1983	261	170	4,286	886	\$671,000
1984	373	218	4,764	1,043	\$1,655,000
1985	470	302	8,106	1,854	\$1,902,000
1986	522	381	7,904	1,212	\$1,861,000
1987	868	461	19,097	4,184	\$6,562,000
1988	1,046	820	14,344	2,498	\$8,789,000
1989	1,109	860	24,045	15,012	\$16,611,000
1990	1,249	925	42,405	10,388	\$12,898,000
1991	1,326	1,087	40,265	13,170	\$6,317,000
1992	1,428	1,075	18,175	7,255	\$10,239,000
1993	1,613	1,426	27,781	4,848	\$7,340,000
1994	1,726	1,268	52,023	15,906	\$17,104,000
1995	1,877	1,174	37,593	9,554	\$12,924,000
1996	1,735	1,632	48,946	14,657	\$14,325,000
1997	1,713	1,349	50,629	19,352	\$16,111,000
1998	1,759	1,444	56,154	15,651	\$14,535,000
1999	1,778	1,428	71,140	22,608	\$21,759,078
2000	1,750	1,469	62,743	19,007	\$26,065,000
2001	1,779	1,473	59,885	18,398	\$22,196,000
2002	1,849	1,478	49,061	19,005	\$19,462,990
2003	1,914	1,490	79,897	22,937	\$19,999,879
2004	1,727	1,574	46,226	21,986	\$17,915,212
2005	1,688	1,417	80,740	21,245	\$16,223,805
2006	1,806	1,420	47,537	18,928	\$31,556,202
Cumulative Hatchery Revenues from Special Harvests:					\$328,220,806

<sup>a</sup> Preliminary values. 2006 Season and value data from the Alaska Department of Fish and Game website: <http://www.cf.adfg.state.ak.us/geninfo/finfish/salmon/catchval/blusheet/06exvesl.php>

**Table 20.**—Summary of pink salmon production from private nonprofit hatcheries in Alaska, as reported by operators.

Year	Egg take (millions)	Fry release (millions)	Total return (thousands)	Cost recovery (thousands)
1975	8			
1976	16	4		
1977	35	12	160	109
1978	35	26	160	215
1979	47	28	356	253
1980	98	32	1,505	346
1981	188	79	2,491	838
1982	185	103	5,253	1,359
1983	186	127	4,087	843
1984	242	159	3,638	583
1985	340	199	7,405	1,699
1986	325	272	6,768	949
1987	618	299	17,964	3,625
1988	645	626	12,258	2,008
1989	806	553	22,561	14,529
1990	789	685	39,920	9,846
1991	831	704	37,081	12,367
1992	883	648	13,200	5,977
1993	1,029	920	19,844	2,740
1994	1,075	787	40,939	13,384
1995	1,162	621	25,415	6,819
1996	929	999	29,298	9,401
1997	1,064	772	33,956	14,027
1998	1,121	873	38,652	10,693
1999	1,092	878	51,973	17,623
2000	1,074	880	40,395	12,381
2001	1,097	942	47,247	14,564
2002	1,168	938	30,835	12,916
2003	1,105	962	59,773	15,376
2004	960	965	30,564	17,040
2005	950	808	69,076	18,099
2006	964	809	26,702	12,620



**Table 21.**—Summary of chum salmon production from private nonprofit hatcheries in Alaska, as reported by operators.

Year	Egg take (millions)	Fry release (millions)	Total return (thousands)	Cost recovery (thousands)
1975	<1	<1		
1976	<1	<1		
1977	2	<1		
1978	2	1	1	0
1979	7	1	<1	0
1980	27	3	2	0
1981	32	22	21	12
1982	46	24	22	<1
1983	69	42	127	35
1984	122	55	1,001	437
1985	119	98	525	123
1986	181	100	780	189
1987	235	150	955	499
1988	370	186	1,835	470
1989	267	287	1,102	298
1990	425	217	1,633	370
1991	442	359	1,959	404
1992	495	394	3,079	706
1993	458	452	6,387	1,782
1994	520	402	8,783	2,128
1995	590	463	9,800	2,252
1996	651	534	16,205	4,782
1997	517	477	13,250	4,643
1998	513	479	13,423	4,355
1999	568	460	15,072	4,361
2000	572	508	18,698	6,060
2001	560	468	7,620	3,104
2002	547	450	12,561	5,074
2003	675	436	13,695	6,514
2004	664	574	10,905	4,102
2005	615	544	7,524	2,428
2006	705	532	15,621	5,458

**Table 22.**—Summary of coho salmon production from private nonprofit hatcheries in Alaska, as reported by operators.

Year	Egg take (millions)	Juvenile release (millions)	Total return (thousands)	Cost recovery (thousands)
1975	<1			
1976	<1			
1977	<1	<1		
1978	1	<1	<1	
1979	1	<1	<1	
1980	1	1	<1	
1981	3	1	52	6
1982	3	1	62	2
1983	6	2	72	7
1984	6	3	121	22
1985	4	4	168	30
1986	8	4	345	73
1987	9	5	169	58
1988	13	5	122	11
1989	14	9	305	89
1990	14	11	692	141
1991	16	12	1,001	368
1992	17	10	1,070	378
1993	19	11	657	144
1994	24	13	1,189	240
1995	22	14	966	319
1996	28	20	1,041	253
1997	26	18	921	258
1998	23	17	1,124	342
1999	20	18	1,452	372
2000	22	15	1,456	320
2001	23	17	1,561	433
2002	31	17	1,875	766
2003	30	22	1,433	395
2004	29	23	1,043	258
2005	30	19	1,274	289
2006	31	19	1,255	276

**Table 23.**—Summary of Chinook salmon production from private nonprofit hatcheries in Alaska, as reported by operators.

Year	Egg take (millions)	Juvenile release (millions)	Total return (thousands)	Cost recovery (thousands)
1980	<1			
1981	<1			
1982	<1	<1	4	3
1983	1	<1	1	0
1984	3	<1	4	1
1985	6	1	8	2
1986	7	4	11	1
1987	5	6	9	2
1988	7	2	23	9
1989	7	3	37	18
1990	9	5	60	22
1991	10	4	70	26
1992	7	6	42	23
1993	5	7	54	26
1994	6	6	58	15
1995	6	4	98	28
1996	8	4	97	34
1997	8	5	85	32
1998	7	5	76	19
1999	7	5	77	16
2000	8	7	117	37
2001	10	7	130	49
2002	10	6	122	33
2003	10	6	138	48
2004	11	7	164	62
2005	12	7	106	26
2006	13	8	76	15

**Table 24.**—Summary of sockeye salmon production from private nonprofit hatcheries in Alaska, as reported by operators.

Year	Egg take (millions)	Juvenile release (millions)	Total return (thousands)	Cost recovery (thousands)
1985	<1			
1986	1	<1		
1987	2	1		
1988	11	1	66	0
1989	15	8	40	79
1990	12	8	101	9
1991	27	8	154	5
1992	26	16	784	171
1993	103	37	839	156
1994	100	60	1,054	139
1995	97	72	1,313	136
1996	119	75	2,306	187
1997	98	77	2,417	392
1998	95	71	2,880	242
1999	91	67	2,566	236
2000	74	60	2,076	209
2001	89	39	3,327	248
2002	93	67	3,668	216
2003	94	64	4,832	604
2004	63	72	3,550	524
2005	82	39	2,761	404
2006	92	53	3,883	559

**Table 25.**—Alaska commercial salmon fishery harvest average weights and prices.

Area/Species	Average Harvest <sup>a</sup>	
	Weight (lb)	Price/lb.
Cook Inlet		
Chinook	18.57	\$1.55
Sockeye	5.03	\$1.00
Coho	6.47	\$0.90
Pink	3.72	\$0.13
Chum	7.99	\$0.25
Kodiak		
Chinook	10.45	\$0.94
Sockeye	5.10	\$0.76
Coho	7.79	\$0.67
Pink	3.70	\$0.12
Chum	8.41	\$0.27
Prince William Sound		
Chinook	20.97	\$5.00
Sockeye	5.74	\$1.65
Coho	8.27	\$0.81
Pink	3.56	\$0.16
Chum	8.33	\$0.33
Southeast		
Chinook	15.14	\$3.37
Sockeye	5.67	\$1.09
Coho	6.83	\$1.41
Pink	4.02	\$0.12
Chum	8.92	\$0.35

<sup>a</sup> Data from the Alaska Department of Fish and Game website:  
<http://www.state.ak.us/adfg/geninfo/finfish/salmon;salmhome.htm>. Accessed 01/30/2007.

**Table 26.**—Alaska state hatchery FY 2006 operating budgets, in thousands of dollars.

Hatchery	FY2006	FY2006
	Authorized Total	Actual Total
Elmendorf Hatchery	\$656,800.00	\$779,613.00
Ft. Richardson Hatchery	\$1,319,600.00	\$1,328,071.00
Crystal Lake Hatchery <sup>a</sup>	\$592,700.00	\$591,408.00

<sup>a</sup> Crystal Lake Hatchery was funded with \$192,700 from the Fish and Game Fund, \$200,000 from Dingle-Johnson Funds, and with \$200,000 from the Southern Southeast Regional Aquaculture Association.

**Table 27.**– Estimated pink salmon returns to Alaska hatcheries in 2006, including common property harvests, as reported by operators.

Area/Operator/Location	Common Property Harvest						Brood	Cost Recovery Harvest	Escapement	Total	
	Seine	Gillnet	Troll	Sport	Personal Use/ Subsistence	Other					
Southeast											
AKI	Port Armstrong	280,006					38,406	77,465	225,183	10,000	631,060
SJC	Sitka	18,657					17,782	1,416	3,605		41,460
NSRAA	Medvejje						650	925	572	1,200	3,347
Southeast Totals		298,663	0	0	0	0	56,838	79,806	229,360	11,200	675,867
Prince William Sound											
PWSAC	Armin F. Koernig	2,391,723						400,619	2,418,082		5,210,424
	Wally Noerenberg	1,429,468	29,845					200,854	2,404,868		4,065,035
	Cannery Creek	1,319,036						369,066	1,226,946		2,915,048
VFDA	Solomon Gulch	4,840,097			25,000		157,061	191,164	3,775,539	70,721	9,059,582
	Prince William Sound	9,980,324			25,000	0		1,161,703	9,825,435	70,721	21,250,089
Cook Inlet											
PGHC	Port Graham		5,000					27,741	246,781	5,000	284,522
Cook Inlet Totals		0	5,000	0	0	0	0	27,741	246,781	5,000	284,522
Kodiak											
KRAA	Kitoy Bay	1,840,106				1,123	105,748	216,068	2,318,003	10,000	4,491,048
Kodiak Totals		1,840,106	0	0	0	1,123	105,748	216,068	2,318,003	10,000	4,491,048
Statewide Totals		12,119,093	34,845	25,000	1,123			1,485,318	12,619,579	96,921	26,701,526

**Table 28.**—Estimated chum salmon returns to Alaska hatcheries in 2006, including common property harvests, as reported by operators.

Area/Operator/Location	Common Property Harvest						Brood	Cost Recovery Harvest	Escapement	Total
	Seine	Gillnet	Troll	Sport	Personal Use/ Subsistence	Other				
<b>Southeast</b>										
SSRAA	Whitman Lake									
	Nakat Inlet – summer	375,400	130,150							505,550
	Anita Bay -summer	362,800	354,850	150						717,800
	Kendrick Bay – summer	647,000	77,900							724,900
	Neets Bay – summer	162,800	179,800	10,000			73,305	79,595	908,400	1,413,900
	Neets Bay – fall	7,100	49,100	2,300			22,522	18,378	124,500	223,900
	Nakat Inlet – fall	8,600	30,200							38,800
NSRAA	Medvejie	1,105,493	643,127	139,291			8,224	38,361	331,849	7,606
	Hidden Falls	1,760,387	1,096				29,537	104,562	289,497	
	Haines projects		1,890					2,360		1,472
DIPAC	Sheep Creek									0
	Macaulay (was Gastineau)	73,835	389,053		2,700		275,544	94,652	1,051,163	
	Amalga	78,940	354,592						1,767,409	
	Limestone Inlet	6,862	79,794							86,656
	Boat Harbor	23,586	529,894							553,480
KNFC	Gunnuk Creek									0
	Kake SHA	31,553		769	50	1,000	18,500	57,395		1,000
	Southeast Cove	62,264		292			1,630		143,745	
AKI	Port Armstrong	1,512						5,841	208	
SJC	Sitka	17,348	8,562	1,854			1,049	1,037	4,961	
MIC	Tamgas Creek	11,724	55,000				10,500	6,273	10,500	
	<b>Southeast Totals</b>	<b>4,737,204</b>	<b>2,885,008</b>	<b>154,656</b>	<b>2,750</b>	<b>1,000</b>	<b>440,811</b>	<b>408,454</b>	<b>4,632,232</b>	<b>10,078</b>
<b>Prince William Sound</b>										
PWSAC	Wally Noerenberg									
	Lake Bay	346,101	306,937		1,000			195,041	830,489	
	Port Chalmers	440,415								440,415
	Sawmill Bay	105,810							4,526	110,336
	<b>Prince William Sound Totals</b>	<b>892,326</b>	<b>306,937</b>	<b>0</b>	<b>1,000</b>	<b>0</b>	<b>0</b>	<b>195,041</b>	<b>835,015</b>	<b>0</b>
<b>Kodiak</b>										
KRAA	Kitoi Bay	176,051					72	9,018	25,488	1,497
	<b>Kodiak Totals</b>	<b>176,051</b>	<b>0</b>	<b>0</b>	<b>0</b>	<b>72</b>	<b>9,018</b>	<b>25,488</b>	<b>1,497</b>	<b>400</b>
	<b>Statewide Totals</b>	<b>5,805,581</b>	<b>3,191,945</b>	<b>154,656</b>	<b>3,750</b>	<b>1,072</b>	<b>628,983</b>	<b>5,468,744</b>	<b>10,478</b>	<b>15,715,038</b>

**Table 29.**—Estimated coho salmon returns to Alaska hatcheries in 2006, including common property harvests, as reported by operators.

Area/Operator/Location		Common Property Harvest						Brood	Cost Recovery Harvest	Escapement	Total
		Seine	Gillnet	Troll	Sport	Personal Use/ Subsistence	Other				
Southeast											
SSRAA	Whitman Lake	390	2,476	6,330	604		682	1,492			11,974
	Anita Bay	2,100	13,319	8,942	436						24,797
	Nakat	71	8,243	7,764	435						16,513
	Neets Bay	887	12,190	40,563	5,691		300	2,000	6,900		68,531
	Burnett Inlet		894	241	90		1,570	1,594			4,389
	Neck Lake	27	4,903	1,635	5,000		4,980		20,045		36,590
	Crystal Lake Hatchery	801		1,374	86		1,591	180			4,032
NSRAA	Medvejie			323	101		120	80			624
	Deer Lake	6,042		38,933	1,818		3,437		37,658		87,888
	Shamrock Cove			5,488	550		400				6,438
	Hidden Falls	1,239	596	70,290	4,501		6,572	2,949	140,135		226,282
AKI	Port Armstrong			15,434			1,722	3,013	17,735		37,904
KNFC	Gunnuk Creek	39	141	70	35		100	35		118	538
DIPAC	Macaulay (was Gastineau)	3	2,455	8,252	2,762		1,188	479	13,187		28,326
KTHC	Deer Mountain	369	530	140	333		841	1,262		325	3,800
SJC	Sitka			3,131			3,744	80	2		6,957
POWHA	Klawock Hatchery	375		12,943	435		4,826	4,570	7,013	6,008	36,170
MIC	Tamgas Creek	5,000	25,000	7,882	125		5,200	1,227	4,500		48,934
	Southeast Totals	17,343	70,747	229,735	23,002	0	37,273	18,961	247,175	6,451	650,687
Prince William Sound											
PWSAC	Wally Noerenberg	16,995	97,002		2,500		15,000	2,079			133,576
	Cordova/Whittier/Chenega				43,925						43,925
VFDA	Solomon Gulch	210,382			66,000		754	1,360	16,172	341	295,009
	Prince William Sound Totals	227,377	97,002	0	112,425	0	15,754	3,439	16,172	341	472,510
Cook Inlet											
CIAA	Trail Lakes							604	1,511	2,042	4,157
ADF&G	Ship Creek Complex				12,441			545		1,431	14,417
	Bird Creek				4,865					442	5,307
	Homer Spit				14,603						14,603
	Resurrection Bay				33,375			150			33,525
	Campbell Creek				1,047			38		434	1,519
	Eklutna tailrace				4,717			80			4,797
	Cook Inlet Totals	0	0	0	71,048	0	0	1,417	1,511	4,349	78,325
Kodiak											
KRAA	Kitoi Bay	152,143			400	716	3,970	1,713	16,062		175,004
	Pillar Creek- road system				1,600						1,600
	Kodiak Totals	152,143	0	0	2,000	716	3,970	1,713	16,062	0	176,604
Statewide Totals		396,863	167,749	229,735	208,475	716	56,997	25,530	280,920	11,141	1,378,126



**Table 30.**—Estimated Chinook salmon returns to Alaska hatcheries in 2006, including common property harvests, as reported by operators.

Area/Operator/Location	Common Property Harvest						Brood	Cost Recovery Harvest	Escapement	Total	
	Seine	Gillnet	Troll	Sport	Personal Use/ Subsistence	Other					
<b>Southeast</b>											
SSRAA	Whitman Lake	180	331	2,897	1,671		3,364	564	3,668	200	12,875
	Long Lake	59	57	135	60						311
ADF&G	Crystal Lake Hatchery	110	800	1,555	4,490			2,380			9,335
	Anita Bay	4,900	5,510	2,190	770				6,060		13,370
	Neets Bay	940	920	3,340	970						12,230
NSRAA	Medvejie	409	669	2,583	920		1,478	1,756	3,325		11,140
	Hidden Falls	3,530	108	2,604	532		1,663	687	1,229	50	10,403
AKI	Port Armstrong			587			70	855	304		1,816
DIPAC	Macaulay (was Gastineau)	55	488	389	1,060		163	154	193		2,502
	Skagway Site	189	37	5	283		9	36			559
KTHC	Deer Mountain Hatchery	15	26	83	409		11	65		77	686
SJC	Sitka			10			5	19			34
MIC	Tamgas Creek	499	300	847	231		1,914	87	1,714		5,592
NOAA	Little Port Walter	203	87	3,442				2,900			6,632
	<b>Southeast Totals</b>	<b>11,089</b>	<b>9,333</b>	<b>20,667</b>	<b>11,396</b>	<b>0</b>	<b>8,677</b>	<b>9,503</b>	<b>16,493</b>	<b>327</b>	<b>87,485</b>
<b>Prince William Sound</b>											
ADF&G	Ship Creek Complex				2,075						2,075
	<b>Prince William Sound Totals</b>	<b>0</b>	<b>0</b>	<b>0</b>	<b>2,075</b>	<b>0</b>	<b>0</b>	<b>0</b>	<b>0</b>	<b>0</b>	<b>2,075</b>
<b>Cook Inlet</b>											
ADF&G	Ship Creek Complex										
	Resurrection Bay				2,835						2,835
	Kachemak Bay		623		3,200						3,823
	Ship Creek				3,406			294		1,431	5,131
	Crooked Creek				2,358			57		1,052	3,467
	Ninilchik River				376			204		204	784
	Eklutna tailrace				670						670
	Deception Creek				1,499			110		1,372	2,981
	<b>Cook Inlet Totals</b>	<b>0</b>	<b>623</b>	<b>0</b>	<b>14,344</b>	<b>0</b>	<b>0</b>	<b>665</b>	<b>0</b>	<b>4,059</b>	<b>19,691</b>
<b>Kodiak</b>											
KRAA	Pillar Creek				270	7		123			400
	<b>Kodiak Totals</b>	<b>0</b>	<b>0</b>	<b>0</b>	<b>270</b>	<b>7</b>	<b>0</b>	<b>123</b>	<b>0</b>	<b>0</b>	<b>400</b>
	<b>Statewide Totals</b>	<b>11,089</b>	<b>9,956</b>	<b>20,667</b>	<b>28,085</b>	<b>7</b>	<b>8,677</b>	<b>10,291</b>	<b>16,493</b>	<b>4,386</b>	<b>109,651</b>

**Table 31.**—Estimated sockeye salmon returns to Alaska hatcheries in 2006, including common property harvests, as reported by operators.

Area/Operator/Location	Common Property Harvest					Personal Use/ Subsistence	Other	Brood	Cost Recovery Harvest	Escapement	Total
	Seine	Gillnet	Troll	Sport							
Southeast											
SSRAA	Burnett Inlet						11				11
	Neck Lake			33			38	47			118
	Hugh Smith Lake				5,100					42,112	47,212
POWHA	Klawock Hatchery						2,156			12,715	14,871
DIPAC	Snettisham	14,191	179,318			266	5,834	6,146	127,383		333,138
	Sweetheart Lake	684	3,323			3,796					7,803
	Stikine River <sup>1</sup>		41,886			180	55,016			36,664	133,746
	Taku River		2,205			24	678			2,491	5,398
MIC	Tamgas Creek	250	1,000				250	81	250		1,831
Southeast Totals		15,125	232,832	0	33	4,266	63,983	6,274	127,633	93,982	544,128
Prince William Sound											
PWSAC	Main Bay	29,669	639,111		500			15,854	350,742		1,035,876
	Gulkana I and II										
	Paxson Lake		65,476		545	4,229		24,703		3,050	98,003
	Crosswind Lake		90,030		750	5,815				67,008	163,603
	Summit Lake		8,185		68	650				2,431	11,334
Prince William Sound Totals		29,669	802,802		1,863	10,694	0	40,557	350,742	72,489	1,308,816
Cook Inlet											
CIAA	Trail Lakes–Bear Creek	27,793					4	4,060	34,655	8,338	74,850
	Big Lake		3,637		100		247	5,850		26,712	36,546
	Hidden Lake		21,049		4,030	3,720	92	4,690		33,852	67,433
	Leisure/Hazel Lakes					5,550	820		18,921		25,291
	Tustumena Lake		1,211,408		5,500	75,000				366,592	1,658,500
	Kirschner Lake	24,130							26,130		50,260
Cook Inlet Totals		51,923	1,236,094		9,630	84,270	1,163	14,600	79,706	435,494	1,912,880
Kodiak											
KRAA	Kitoi Bay	23,822			130	141			1,317	4,000	29,410
	Pillar Creek										
	Spiridon Lake	54,745	34,199								88,944
	Foul Bay	819									819
	Waterfall Bay									300	300
Kodiak Totals		79,386	34,199		130	141	0	0	1,317	4,300	119,473
Statewide Totals		176,103	2,305,927	0	11,656	99,371	65,146	61,431	559,398	606,265	3,885,297

<sup>1</sup>“Other” is Canadian harvest.

**Table 32.**—Estimated “other” enhanced returns to Alaska hatcheries in 2006, including common property harvests, as reported by operators.

Area/Operator/Location		Species	Commercial	Sport Catch	Personal Use/ Subsistence	Other	Brood	Cost Recovery Harvest	Escapement	Total
Southeast										
DMTH	Deer Mountain	Steelhead					5		18	23
NMFS	Little Port Walter	Steelhead					643			643
Southeast Totals			0	0	0	0	648	0	18	666
Cook Inlet										
ADF&G	Ship Creek Hatchery Complex	Arctic char		6,575			100			6,675
		Arctic grayling		2,615			205			2,820
		Landlocked salmon		24,525						24,525
		Rainbow trout		67,746			1,194			68,940
Cook Inlet Totals			0	101,461	0	0	1,499	0	0	102,960
Statewide Totals			0	101,461	0	0	2,147	0	18	103,626

**Table 33.**—Summary of salmon production in 2006 from Fish Resource Permits issued by the Alaska Department of Fish and Game.

Area/Permittee	Species	Maximum number to be released
<b>Southeast</b>		
Juneau Center for Fisheries and Ocean Sciences	PINK	50,000
Juneau Douglas High School	COHO	2 spawning pairs
Petersburg High School	PINK	50,000
Fawn Mountain Elementary (Ketchikan)	COHO	100
Hyder School	CHUM or COHO	No permit
Yakutat School	COHO	250
<b>Southcentral</b>		
Abbott Loop Elementary (Anchorage)	COHO	500
Alpenglow Elementary (Eagle River)	COHO	500
Aquarian Charter (Anchorage)	COHO	500
Bartlett High School	COHO	500
Baxter Elementary School (Anchorage)	COHO	500
Bayshore Elementary (Anchorage)	COHO	500
Bear Valley Elementary	COHO	500
Big Lake Elementary (Big Lake)	COHO	500
Bowman Elementary	COHO	500
Campbell Elementary	COHO	500
Central Middle School	COHO	500
Chinook Elementary	COHO	500
Chugach Optional	COHO	500
Chugiak Elementary	COHO	500
Clark Middle School (Anchorage)	COHO	500
Chapman School (Anchor Point)	COHO	500
College Gate Elementary (Anchorage)	COHO	500
Cook Inlet Academy (Soldotna)	COHO	500
Cottonwood Creek Elementary	COHO	500
Creekside Park Elementary	COHO	500
Denali Elementary (Anchorage)	COHO	500
Eagle Academy	COHO	500
Eagle River Elementary	COHO	500
Fairview Elementary (Anchorage)	COHO	500
Finger Lake Elementary (Palmer)	COHO	500
Girdwood Junior High	COHO	500
Gladys Wood Elementary (Anchorage)	COHO	500
Goldenview Middle School	COHO	500
Goose Bay Elementary (Palmer)	COHO	500
Grace Christian	COHO	500
Gruening Middle School	COHO	500
Hanshew Middle School	COHO	500
Herman Hutchens Elementary (Valdez)	Chum	500
Homer Flex High School (Homer)	COHO	500
Homer High School	COHO	500

-continued-

**Table 33**–Page 2 of 3.

Area/Permittee	Species	Maximum number to be released
Homestead Elementary (Eagle River)	COHO	500
Houston High School	COHO	500
Huffman Elementary (Anchorage)	COHO	500
Inlet View Elementary (Anchorage)	COHO	500
Kalifornsky Beach Elementary (Soldotna)	COHO	500
Kasuun Elementary (Anchorage)	COHO	500
Kenny Lake School (Kenny Lake)	COHO	500
Kincaid Elementary	COHO	500
King Career Center (Anchorage)	COHO	500
Klatt Elementary (Anchorage)	COHO	500
Lake Hood Elementary (Anchorage)	COHO	500
Lake Otis Elementary	COHO	500
<b>Southcentral</b>		
Mears Middle School	COHO	500
Midnight Sun School (Wasilla)	COHO	500
Mirror Lake Middle School (Chugiak)	COHO	500
Mt. Spurr Elementary	COHO	500
Mt. View Elementary (Kenai)	COHO	500
Muldoon Elementary	COHO	500
Nikiski/North Star Elementary	COHO	500
Ninilchik School	COHO	500
North Star RTC	COHO	500
Northern Lights ABC (Anchorage)	COHO	500
Nunaka Valley Elementary (Anchorage)	COHO	500
Ocean View Elementary (Anchorage)	COHO	500
O'Malley School (Anchorage)	COHO	500
Pacific Northern Academy	COHO	500
Pioneer Peak Elementary School (Palmer)	COHO	500
Rabbit Creek Elementary (Anchorage)	COHO	500
Ravenwood Elementary	COHO	500
Redoubt Elementary (Soldotna)	COHO	500
Rogers Park Elementary (Anchorage)	COHO	500
SAVE High School (Anchorage)	COHO	500
Sears Elementary (Kenai)	COHO	500
Service High School	COHO	500
Sherrod Elementary (Palmer)	COHO	500
Skyview Elementary	COHO	500
Soldotna High School	COHO	500
South High School	COHO	500
Spring Hill Elementary	COHO	500
Susitna Elementary (Anchorage)	COHO	500
Susan B. English (Seldovia)	COHO	500
Susitna Valley High School	COHO	500
Sutton Elementary (Sutton)	COHO	500
Swanson Elementary (Palmer)	COHO	500
Taku Elementary (Anchorage)	COHO	500

-continued-

**Table 33.**–Page 3 of 3.

Area/Permittee	Species	Maximum number to be released
Talkeetna Elementary	COHO	500
Tanaina Elementary (Wasilla)	COHO	500
Trailside Elementary School (Eagle River)	COHO	500
Tudor Elementary (Anchorage)	COHO	500
Tustumena Elementary (Kasilof)	COHO	500
Ursa Minor Elementary	COHO	500
Voznesenka School (Fritz Cove)	COHO	500
Wasilla High School	COHO	500
West Homer Elementary	COHO	500
Williwaw Elementary	COHO	500
<b>Interior</b>		
Arctic Light Elementary (Ft. Wainright)	COHO	500
Badger Road Elementary (Fairbanks)	COHO	500
Ben Eielson Jr.Sr. High School (Eielson AFB)	COHO	500
Delta Junction Elementary	COHO	500
Joy Elementary (Fairbanks)	COHO	500
Ladd Elementary	COHO	500
Nordale Elementary (Fairbanks)	COHO	500
Pearl Creek Elementary (Fairbanks)	COHO	500
Salcha Elementary	COHO	500
Tok School	COHO	500
Tri-Valley School (Healy)	COHO	500
Weller Elementary (Fairbanks)	COHO	500
Whitestone School	COHO	500
Woodriver Elementary (Fairbanks)	COHO	500
<b>Western</b>		
Akhiok School	COHO	500
East Elementary School (Kodiak)	COHO	500
Karluk School	COHO	500
Kodiak Christian School	COHO	500
Kodiak High School	COHO	500
Kodiak Learning Center	COHO	500
Larsen Bay School	COHO	500
Main Elementary (Kodiak)	COHO	500
North Star Elementary (Kodiak)	COHO	500
Old Harbor School	COHO	500
Ouzinkie School	COHO	500
Peterson Elementary School (Kodiak)	COHO	500
Port Lions School	COHO	500
St. Mary's School	COHO	500
Unalaska City School District	COHO	25,000
<b>Arctic-Yukon-Kuskokwim</b>		
Aleknagik School	COHO	500
DRKM School (Kongiganak)	COHO	500
Igiugig School	COHO	500
Jimmy Huntington School	CHUM	250
Napaaqtuamiut School (Noatak)	COHO	500

**Table 34.**—Updated pink salmon returns to Alaska hatcheries in 2005, including common property harvest, as reported by operators.

Area/Operator/Location	Common Property Harvest							Cost Recovery Harvest	Escapement	Total	
	Seine	Gillnet	Troll	Sport	Personal Use/ Subsistence	Other	Brood				
Southeast											
AKI	Port Armstrong	771,627					178,582	810,617	26,100	1,786,926	
SJC	Sitka					333	1,123			1,456	
Southeast Totals		771,627	0	0	0	0	333	179,705	810,617	26,100	1,788,382
Prince William Sound											
PWSAC	Armin F. Koernig	6,429,875					793,048	2,894,215		10,117,138	
	Wally Noerenberg	4,455,887	59,592		100		1,043,736	3,604,839		9,164,154	
	Cannery Creek	10,452,306					590,559	2,448,805		13,491,670	
VFDA	Solomon Gulch	13,713,349			25,000		491,439	224,969	3,561,805	118,788	18,135,350
Prince William Sound Totals		35,051,417	59,592		25,100	0	491,439	2,652,312	12,509,664	118,788	50,908,312
Cook Inlet											
PGHC	Port Graham						84,088	506,732	5,000	595,820	
CIAA	Tutka	4,779						1,631,806	133,600	1,770,185	
Cook Inlet Totals		4,779	0		0	0	0	84,088	2,138,538	138,600	2,366,005
Kodiak											
KRAA	Kitoi Bay	10,963,488				4,350	400,469	2,640,254	5,000	14,013,561	
Kodiak Totals		10,963,488				4,350	400,469	2,640,254	5,000	14,013,561	
Statewide Totals		46,791,311	59,592	0	25,100	4,350	491,772	3,316,574	18,099,073	288,488	69,076,260

**Table 35.**—Updated chum salmon returns to Alaska hatcheries in 2005, including common property harvests, as reported by operators.

Area/Operator/Location	Common Property Harvest							Cost Recovery Harvest	Escapement	Total
	Seine	Gillnet	Troll	Sport	Personal Use/Subsistence	Other	Brood			
Southeast										
SSRAA	Whitman Lake									
	Nakat Inlet (summer)	189,800	49,729							239,529
	Anita Bay (summer)	90,735	139,359							230,094
	Kendrick Bay (summer)	118,832	12,211	9,428						140,471
	Neets Bay (summer)	62,400	58,400	6,700			16,365	90,518	604,838	839,221
	Neets Bay (fall)	42,900	14,600	21				13,490	86,314	157,325
	Nakat Inlet (fall)	6,800	41,500							48,300
NSRAA	Medvejie	564,171	430,655	165,046			14,448	36,708	513,044	1,240 1,725,312
	Hidden Falls	342,255		3			21,550	112,581	330,172	806,561
	Haines projects		2,023					1,108		1,927 5,058
DIPAC	Macaulay (Gastineau)	9,924	72,458		1,800		102,642	88,818	32,966	308,608
	Amalga	34,982	78,962						246,405	360,349
	Limestone Inlet	1,827	25,045							26,872
	Boat Harbor	2,547	125,279							127,826
KNFC	Gunnuk Creek	16,527		425			5,750	35,533		1,000 59,235
	Southeast Cove	26,100		66			800	189	78,036	105,191
SJC	Sitka	9,117					8,689	427		18,233
MIC	Tamgas Creek	6,000	13,350				3,782	5,536	1,000	29,668
Southeast Totals		1,524,917	1,063,571	181,689	1,800	0	174,026	384,908	1,892,775	4,167 5,227,853
Prince William Sound										
PWSAC	Wally Noerenberg									
	Pt. Chalmers	272,309	873,845		500			280,811	535,783	1,963,248
	Sawmill Bay	235,162								235,162
		1,971								1,971
Prince William Sound Totals		509,442	873,845	0	500	0	0	280,811	535,783	0 2,200,381
Kodiak										
KRAA	Kitoi Bay									
	Kodiak Totals	91,814	0	0	0	0	0	33,145	0	0 124,959
Statewide Totals		2,126,173	1,937,416	181,689	2,300	0	174,026	698,864	2,428,558	4,167 7,553,193



**Table 36.**—Updated coho salmon returns to Alaska hatcheries in 2005, including common property harvests, as reported by operators.

Area/Operator/Location	Common Property Harvest						Other	Cost Recovery			Total
	Seine	Gillnet	Troll	Sport	Personal Use/ Subsistence	Brood		Harvest	Escapement		
Southeast											
SSRAA	Whitman Lake	377	1,019	5,349	840		557	1,858		10,000	
	Anita Bay	350	8,067	6,402	311					15,130	
	Nakat	617	5,631	6,748	856					13,852	
	Neets Bay	9,400	30,000	64,200	12,800		3,020	980	4,200	124,600	
	Burnett Inlet	100	1,100	200	300		1,123	1,377		4,200	
	Neck Lake		9,500	400	3,000		1,099		26,181	40,180	
	Crystal Lake Hatchery	300	900	3,000	300		2,720	180		7,400	
NSRAA	Medvejie			319	191			149		679	
	Deer Lake	3,579		56,224	1,930		2,028		69,618	133,379	
	Deep Inlet	31		409	270		250			960	
	Shamrock Cove		81	13,825	5,502		500			19,908	
	Hidden Falls	20,307	222	61,908	6,577		22,629	3,688	84,523	201,354	
AKI	Port Armstrong			12,957			2,576	3,457	454	19,444	
KNFC	Gunnuk Creek	35	126	62			15	30		438	
DIPAC	Macaulay (Gastineau)	1,643	639	11,437	4,179		2,224	471	20,019	40,612	
KTHC	Deer Mountain	1,187	1,205	518	1,148		814	320		6,454	
SJC	Sitka			42			15	37		94	
POWHA	Klawock Hatchery	14,703		47,035	10,500		4,876	4,422	37,657	128,060	
MIC	Tamgas Creek	6,369	33,983	40,153	1,889	600		1,705	12,000	96,699	
Southeast Totals		58,998	92,473	331,188	50,593	600	44,446	18,674	254,652	11,819	863,443
Prince William Sound											
PWSAC	Wally Noerenberg	1,537	51,720		1,500		5,000	6,450	19	66,226	
	Cordova/Whittier/Chenega				21,173					21,173	
VFDA	Solomon Gulch	129,966			66,000		277	1,048	44,402	777	242,470
Prince William Sound Totals		131,503	51,720		88,673		5,277	7,498	44,421	777	329,869
Cook Inlet											
CIAA	Trail Lakes				4,788		57	808	1,536	546	7,735
ADF&G	Ship Creek Complex				6,830			508		364	7,702
	Bird Creek				3,305			619			3,924
	Homer Spit				15,075						15,075
	Resurrection Bay				42,116			145			42,261
	Campbell Creek				1,623			25		922	2,570
	Eklutna tailrace				4,899			84			4,983
Cook Inlet Totals					78,636		57	2,189	1,536	1,832	84,250
Kodiak											
KRAA	Kitoi Bay	151,729			50	758	5,000	6,842			164,379
	Pillar Creek- road system				1,600						1,600
Kodiak Totals		151,729			1,650	758	5,000	6,842	0	0	165,979
Statewide Totals		342,230	144,193	331,188	219,552	1,358	54,780	35,203	300,609	14,428	1,443,541

**Table 37.**—Updated Chinook salmon returns to Alaska hatcheries in 2005, including common property harvests, as reported by operators.

Region/Operator/Location		Seine	Gillnet	Troll	Sport	Personal Use/ Subsistence	Other	Brood	Cost Recovery Harvest	Escapement	Total
Southeast											
SSRAA	Whitman Lake	513	352	6,195	3,750		2,228	971	4,306	150	18,465
	Long Lake	130		330	110				170		740
ADF&G	Crystal Lake Hatchery		650	1,870	4,170			1,887			8,577
	Anita Bay	50	1,430	1,410	50						2,940
	Neets Bay	3,240	210	3,990	1,390				5,230		14,060
NSRAA	Medvejie Creek	1,473	1,110	10,376	1,950		1,928	2,128	9,478	250	28,693
	Hidden Falls	2,244	367	4,418	723		4,223	868	6,085	200	19,128
AKI	Port Armstrong			569			555	292	240		1,656
DIPAC	Gastineau	7	898	983	2,456		938	270	383		5,935
	Skagway Site	13	149	11	651		23	104		129	1,080
KTHC	Deer Mountain Hatchery	32	43	433	574		138	92		150	1,462
SJC	Sitka			19			23				42
MIC	Tamgas Creek	97	809	2,352	1,545	350		175	4,835		10,163
NMFS	Little Port Walter	66	101	2,760	256		820	921			4,924
Southeast Totals		7,865	6,119	35,716	17,625	350	10,876	7,708	30,727	879	117,865
Prince William Sound											
ADF&G	Ship Creek Complex				2,415						2,415
Prince William Sound Totals		0	0		2,415	0	0	0	0	0	2,415
Cook Inlet											
ADF&G	Ship Creek Complex										
	Resurrection Bay				2,768						2,768
	Kachemak Bay		626		2,810						3,436
	Ship Creek				4,081			215		1,485	5,781
	Crooked Creek				1,475			110		1,024	2,609
	Ninilchik River							210		355	565
	Eklutna Tailrace				941						941
	Deception Creek				981			100		1,208	2,289
Cook Inlet Totals		0	626		13,056	0	0	635	0	4,072	18,389
Kodiak											
KRAA	Pillar Creek				185			100		95	380
Kodiak Totals		0	0		185	0	0	100	0	95	380
Statewide Totals		7,865	6,745	35,716	33,281	350	10,876	8,443	30,727	5,046	139,049

**Table 38.**—Updated Sockeye salmon returns to Alaska hatcheries in 2005, including common property harvests, as reported by operators.

Area/Operator/Location		Seine	Gillnet	Troll	Sport	Personal Use/ Subsistence	Other	Brood	Cost Recovery Harvest	Escapement	Total
Southeast											
SSRAA	Burnett Inlet										
	Neck Lake	900	2,300		200		408	588	4		4,400
	Hugh Smith Lake	4,900	5,400							13,700	24,000
POWHA	Klawock Hatchery						2,394			12,509	14,903
DIPAC	Snettisham	31,160	42,874		1,145		13,363	4,728	140,029		233,299
	Sweetheart Lake	1,670	2,956			1,000					5,626
	Stikine River		36,346								36,346
	Taku River		530								530
NSRAA	Haines projects		2,417							3,626	6,043
MIC	Tamgas Creek	40	40								80
Southeast Totals		38,670	92,863	0	1,345	1,000	16,165	5,316	140,033	29,835	325,227
Prince William Sound											
PWSAC	Main Bay	34,125	198,964		750			44,366	188,904		467,109
	Gulkana I and II										
	Paxson Lake		40,277		916	35,491		14,431		2,090	93,205
	Crosswind Lake		52,743		1,677	38,538		5,429		69,253	167,640
	Summit Lake		2,877		57	1,542				1,252	5,728
Prince William Sound Totals		34,125	294,861		3,400	75,571	0	64,226	188,904	72,595	733,682
Cook Inlet											
CIAA	Trail Lakes – Bear Lake	19,018			500		10	3,122	37,654	10,285	70,589
	Hidden Lake		28,467		2,987	2,674		2,093		10,907	47,128
	Meadow Creek		7,711			102	170	2,164		12,221	22,368
	Leisure/Hazel Lakes	40,333			650	4,900	1		22,050		67,934
	Tustumena Lake		828,848		8,000	78,356				346,012	1,261,216
	Kirschner Lake								14,969		14,969
Cook Inlet Totals		59,351	865,026		12,137	86,032	181	7,379	74,673	379,425	1,484,204
Kodiak											
KRAA	Kitoi Bay	44,705			100	111				1,000	45,916
	Pillar Creek										
	Settler's Cove					1,124					1,124
	Spiridon Lake	81,118	63,741								144,859
	Foul Bay	7,402									7,402
	Waterfall Bay	18,270									18,270
Kodiak Totals		151,495	63,741		100	1,235	0	0	0	1,000	217,571
Statewide Totals		283,641	1,316,491	0	16,982	163,838	16,346	76,921	403,610	482,855	2,760,684

**Table 39.**—Updated “other” enhanced fish returns to Alaska hatcheries in 2005, as reported by operators.

		Species	Commercial	Sport Catch	Personal Use/ Subsistence	Other	Brood	Cost Recovery Harvest	Escapement	Total
Southeast										
DMTH	Deer Mountain	Steelhead					9		85	94
NMFS	Little Port Walter	Steelhead					243			243
Southeast Totals			0	0	0	0	252	0	85	337
Cook Inlet										
ADF&G	Ship Creek Complex	Arctic char		5,220			136			5,356
	Statewide lakes	Arctic grayling		1,312			163			1,475
		Rainbow trout		48,287			2,538			50,825
		Landlocked Salmon		16,499						16,499
Cook Inlet Totals			0	71,318	0	0	2,837	0	0	74,155
Statewide Totals			0	71,318	0	0	3,089	0	85	74,492

**Table 40.**—Actively operated Alaska hatcheries.

Initials	Address	City, State, Zip	Office phone	Fax phone	Hatchery	Hatchery Manager	Director	Email
Southeast								
R SSRAA	14 Borch Street	Ketchikan, AK 99901	(907) 225-9605 (907) 225-2635 (907) 247-8790 (907) 874-2525 (907) 772-4772	(907) 225-1348	Whitman Lake Neets Bay Burnett Inlet Crystal Lake*	Jay Creasy Mike Anderson Ron Parsely Loren Thompson	John Burke	<a href="mailto:johnb@ssraa.org">johnb@ssraa.org</a> <a href="mailto:whitman@kpunet.net">whitman@kpunet.net</a> <a href="mailto:neetsbay@starband.net">neetsbay@starband.net</a> <a href="mailto:burnettinlet@starband.net">burnettinlet@starband.net</a> <a href="mailto:crystal.lake@starband.net">crystal.lake@starband.net</a>
R NSRAA	1308 Sawmill Cr. Rd	Sitka, AK 99835	(907) 747-6850	(907) 747-1470	Medvejie Creek Hidden Falls* Haines Projects	Lon Garrison Scott Wagner Todd Buxton	Pete Esquiro	<a href="mailto:pete_esquiro@nsraa.org">pete_esquiro@nsraa.org</a> <a href="mailto:lon_garrison@nsraa.org">lon_garrison@nsraa.org</a> <a href="mailto:scott_wagner@nsraa.org">scott_wagner@nsraa.org</a> <a href="mailto:todd_buxton@nsraa.org">todd_buxton@nsraa.org</a>
P DIPAC	2697 Channel Dr.	Juneau, AK 99801	(907) 463-5114 (907) 463-5114 (907) 463-5115	(907) 463-3213 (907) 463-3213	Macaulay Snettisham*	Steve Schick Kevin Steck	Eric Prestegard	<a href="mailto:Eric_prestegard@dipac.net">Eric_prestegard@dipac.net</a> <a href="mailto:steve_schick@dipac.net">steve_schick@dipac.net</a> <a href="mailto:kevin_steck@dipac.net">kevin_steck@dipac.net</a>
P POWHA	PO Box 554	Craig, AK 99921	(907) 755-2231	(907) 755-2440	Prince of Wales*	John Bruns	John Bruns	<a href="mailto:powha@aptalaska.net">powha@aptalaska.net</a>
P SJC	801 Lincoln St	Sitka, AK 99835	(907) 747-5254	(907) 747-2987	Sheldon Jackson	Dan Goodness		<a href="mailto:dgoodness@sj-alaska.edu">dgoodness@sj-alaska.edu</a>
P KNFC	P.O. Box 523	Take, AK 99830	(907) 785-6460	(907) 785-6475	Gunnuk Creek	John Oliva		<a href="mailto:gunnukcreek@starband.net">gunnukcreek@starband.net</a>
P BCF	P.O. Box 455	Skagway, AK 99840	(907) 983-2355		Burro Creek	Eugene Richards	Gene Richards	<a href="mailto:burrocreek@aptalaska.net">burrocreek@aptalaska.net</a>
P AKI	P.O. Box 21990	Juneau, AK 99802	(907) 586-3443 (907) 586-2228 (907) 586-2228	(907) 586-2236 (907) 586-2228	Port Armstrong Deer Mountain	Ben Contag Jerry Guthrie	Sam Rabung	<a href="mailto:aki@ak.net">aki@ak.net</a> <a href="mailto:portarmstrong@starband.net">portarmstrong@starband.net</a> <a href="mailto:jguthrie@kictribe.com">jguthrie@kictribe.com</a>
F NMFS	P.O. Box 21990	Juneau, AK 99802	(907)789-6055	(907)789-6094	Little Port Walter	Frank Thrower		<a href="mailto:Frank.Thrower@noaa.gov">Frank.Thrower@noaa.gov</a>
F MIC	PO Box 8	Metlakatla, AK 99929	(907)886-3150	(907)886-3152	Tamgas Creek	Steve Leask		<a href="mailto:stevel@aptalaska.net">stevel@aptalaska.net</a>
Prince William Sound								
R PWSAC	PO Box 1110	Cordova, AK 99574	(907) 424-7511	(907) 424-7514	AF Koernig W Noerenberg Main Bay* Gulkana* Cannery Creek*	Craig Perry Bill Lyden Rob Unger Gary Martinek Neil Wright	Dave Reggiani	<a href="mailto:dave.pwsac@ak.net">dave.pwsac@ak.net</a> <a href="mailto:afk.pwsac@ak.net">afk.pwsac@ak.net</a> <a href="mailto:wnh.pwsac@ak.net">wnh.pwsac@ak.net</a> <a href="mailto:mbh.pwsac@ak.net">mbh.pwsac@ak.net</a> <a href="mailto:gkh.pwsac@ak.net">gkh.pwsac@ak.net</a> <a href="mailto:cch.pwsac@ak.net">cch.pwsac@ak.net</a>
P VFDA	PO Box 125	Valdez, AK 99686	(907) 835-4874	(907) 835-5951	Solomon Gulch	Ken Morgan	Jason Wells	<a href="mailto:vfdamike@alaska.com">vfdamike@alaska.com</a> <a href="mailto:vfda@cvinternet.net">vfda@cvinternet.net</a>
Cook Inlet								
R CIAA	40610 Kalifornsky Beach Rd	Kenai, AK 99611	(907) 283-5761	(907) 283-9433	Trail Lakes* Tutka*	Robert Blankenship	Gary Fandrei	<a href="mailto:gfandrei@ciaanet.org">gfandrei@ciaanet.org</a> <a href="mailto:rblankenship_tlh@ciaanet.org">rblankenship_tlh@ciaanet.org</a>
P PGH	PO Box 5543	Port Graham, AK 99603	(907)284-2233	(907)284-2238	Port Graham	Ephim Ananonak		<a href="mailto:pghatchery@starband.net">pghatchery@starband.net</a>
S ADFG	941 N. Reeve Blvd. PO Box 5267	Anchorage, AK 99501 Anchorage, AK 99505	(907)274-0065 (907) 428-1348		Elmendorf Ft Richardson	Darrell Keifer Andrea Tesch		<a href="mailto:darrell_keifer@fishgame.state.ak.us">darrell_keifer@fishgame.state.ak.us</a> <a href="mailto:andrea_tesch@fishgame.state.ak.us">andrea_tesch@fishgame.state.ak.us</a>
Kodiak								
R KRAA	PO Box 3407	Kodiak, AK 99615	(907) 486-6555 (907) 486-4730 (907) 486-6559	(907) 486-4105	Pillar Creek* Kitoi Bay*	Gary Bryne Andrew Aro	Kevin Brennan	<a href="mailto:kraa@gci.net">kraa@gci.net</a> <a href="mailto:pch@gci.net">pch@gci.net</a> <a href="mailto:kitoi@starband.net">kitoi@starband.net</a>

-continued-

**Table 40.** Page 2 of 2.

Initials	Corporate name	Hatchery	Permit #	PNP permit issued	Species reared	Web Site
Southeast						
SSRAA	Southern Southeast Regional Aquaculture Assoc.	Whitman Lake	8	3/9/78	chum, coho, Chinook	<a href="http://www.ssraa.org">www.ssraa.org</a>
		Neets Bay	19	6/17/83	chum, coho, Chinook	
		Burnett Inlet	40	9/30/97	sockeye, coho	
		Crystal Lake*			Chinook, coho	
NSRAA	Northern Southeast Regional Aquaculture Assoc.	Medvejie Creek	16	8/17/81	chum, coho, Chinook, pink	<a href="http://www.nsraa.org">www.nsraa.org</a>
		Hidden Falls*	28	6/22/88	chum, Chinook, coho	
		Haines Projects	34	4/29/92	chum, sockeye	
DIPAC	Douglas Island Pink and Chum, Inc	Sheep Creek	11	9/19/79	chum, pink, coho	<a href="http://www.dipac.net">www.dipac.net</a>
		Gastineau	25	6/3/87	chum, pink, coho, Chinook	
		Snettisham*	39	7/15/96	sockeye	
POWHA	Prince of Wales Hatchery Association	Klawock River*	38	2/19/96	coho, sockeye, Chinook, steelhead	
SJC	Sheldon Jackson College	Sheldon Jackson	3	4/29/75	pink, chum, coho, Chinook, steelhead	
KNFC	Kake Nonprofit Fisheries Corporation	Gunnuk Creek	7	4/1/77	pink, chum, coho	<a href="http://gunnukcreekhatchery.org/">http://gunnukcreekhatchery.org/</a>
BCF	Burro Creek Farms	Burro Creek	12	5/23/80	pink, chum, coho, Chinook	
AKI	Armstrong-Keta, Inc.	Port Armstrong	13	2/23/81	pink, chum, Chinook, coho	
KTHC	Ketchikan Tribal Hatchery Corporation	Deer Mountain	37	6/22/94	Chinook, coho, steelhead, rainbow	
NMFS	National Marine Fisheries Service	Little Port Walter			Chinook, pink, steelhead	
MIC	Tamgas Creek Hatchery	Tamgas Creek			chum, coho, Chinook, sockeye	
Prince William Sound						
PWSAC	Prince William Sound Aquaculture Association	AF Koernig	2	9/29/75	pink	<a href="http://www.pwsac@ak.net">www.pwsac@ak.net</a>
		W Noerenberg	20	6/17/83	pink, chum, Chinook, coho	
		Main Bay*			sockeye	
		Gulkana*			sockeye	
		Cannery Creek*	26	6/22/88	pink	
VFDA	Valdez Fisheries Development Association	Solomon Gulch	15	6/26/81	pink, coho, Chinook	
Cook Inlet						
CIAA	Cook Inlet Aquaculture Association	Trail Lakes*	27	6/22/88	sockeye, coho, Chinook	<a href="http://www.ciaa.net">www.ciaa.net</a>
		Tutka*	32	1/3/94	pink, sockeye	
PGH	Port Graham Hatchery Corporation	Port Graham	33	8/3/92	pink, sockeye, coho	
ADFG	Alaska Department of Fish and Game	Ship Creek Complex <sup>a</sup>			Chinook, coho, char, grayling, lake & rainbow trout	<a href="http://www.state.ak.us/adfg/adfghome.htm">www.state.ak.us/adfg/adfghome.htm</a>
Kodiak						
KRAA	Kodiak Regional Aquaculture Association	Pillar Creek*	41	5/1/98	sockeye, coho, Chinook	<a href="http://www.ptialaska.net/~kraa07/index.html">www.ptialaska.net/~kraa07/index.html</a>
		Kitoi Bay*	29	7/5/88	pink, chum, coho, sockeye	

Codes: R=Regional Aquaculture Association Private Nonprofit (PNP) hatcheries, P=Nonassociation PNP hatchery, F=Federal/BIA hatchery, S=State hatchery

\*=State owned hatchery contracted to private sector.

<sup>a</sup> Elmendorf and Fort Richardson hatcheries.

**Table 41.**—Permitted capacity of Alaskan private nonprofit hatcheries in 2006, in millions of eggs.

Region/Operator/Location		Combined						Total
		Pink	Chum	Pink & Chum	Coho	Chinook	Sockeye	
<b>Southeast</b>								
SSRAA	Whitman Lake		44.30		3.40	1.50		49.20
	Neets Bay		84.00		5.00	4.00		93.00
	Burnett Inlet				2.50		2.70	5.20
	Crystal Lake <sup>a</sup>							0.00
AAC	Bell Island				0.02	0.07	0.01	0.10
NSRAA	Hidden Falls		101.00		7.10	3.50		111.60
	Medvejie Creek	0.30	55.00		3.30	5.20		63.80
	Haines projects		4.80				2.00	6.80
AKI	Port Armstrong	85.00	30.00		3.00	2.00		120.00
BCF	Burro Creek			3.00	0.10	0.10		3.20
DIPAC	Macaulay	50.00	121.00		1.50	0.95		173.45
	Sheep Creek	10.00			0.15			10.15
	Snettisham						33.50	33.50
KTHC	Deer Mountain				0.38	0.13	0.05	0.56
KNFC	Gunnuk Creek			65.00	0.25			65.25
POWHA	Klawock				5.00		5.00	10.05
	Port St Nicholas					0.69		0.69
SJC	Sheldon Jackson	1.00	10.00		0.15	0.10	0.02	11.27
<b>Southeast Totals<sup>b</sup></b>		<b>146.30</b>	<b>450.10</b>	<b>68.00</b>	<b>31.85</b>	<b>18.23</b>	<b>43.20</b>	<b>757.81</b>
<b>Prince William Sound</b>								
PWSAC	Armin F. Koernig	190.00						190.00
	Wally Noerenberg	93.00	165.00		4.00	4.00		266.00
	Cannery Creek	152.00						152.00
	Main Bay						11.00	11.00
	Gulkana						36.75	36.75
VFDA	Solomon Gulch	230.00			2.00	0.30		232.30
<b>Prince William Sound Totals<sup>b</sup></b>		<b>665.00</b>	<b>165.00</b>	<b>0</b>	<b>6.00</b>	<b>4.30</b>	<b>47.75</b>	<b>888.05</b>
<b>Cook Inlet</b>								
PGHC	Port Graham	110.00					1.35	111.35
CIAA	Trail Lakes				6.00	4.00	30.00	40.00
	Eklutna				0.16		18.00	18.16
	Tutka Bay	125.00					0.66	125.66
<b>Cook Inlet Totals<sup>b</sup></b>		<b>235.00</b>	<b>0</b>	<b>0</b>	<b>6.16</b>	<b>4.00</b>	<b>50.01</b>	<b>295.17</b>
<b>Kodiak</b>								
KRAA	Kitoy Bay	215.00	25.00		2.30		0.60	242.90
	Pillar Creek				0.50	0.30	20.00	20.80
<b>Kodiak Totals<sup>b</sup></b>		<b>215.00</b>	<b>25.00</b>	<b>0</b>	<b>2.80</b>	<b>0.30</b>	<b>20.60</b>	<b>263.70</b>
<b>Statewide Totals<sup>b</sup></b>		<b>1,261.30</b>	<b>640.10</b>	<b>68.00</b>	<b>46.81</b>	<b>26.83</b>	<b>161.56</b>	<b>2,204.73</b>

<sup>a</sup>Crystal Lake Hatchery is a state-owned facility under partial contract to SSRAA; it does not have a PNP permit.

<sup>b</sup>Some figures may not total exactly due to rounding.