

**Fishery Data Series No. 10-65**

---

---

**Participation, Effort, and Harvest in the Sport Fish  
Business/Guide Licensing and Logbook Programs,  
2009**

by

**Dora Sigurdsson**

and

**Bob Powers**

September 2010

---

---

Alaska Department of Fish and Game

Divisions of Sport Fish and Commercial Fisheries



## Symbols and Abbreviations

The following symbols and abbreviations, and others approved for the Système International d'Unités (SI), are used without definition in the following reports by the Divisions of Sport Fish and of Commercial Fisheries: Fishery Manuscripts, Fishery Data Series Reports, Fishery Management Reports, and Special Publications. All others, including deviations from definitions listed below, are noted in the text at first mention, as well as in the titles or footnotes of tables, and in figure or figure captions.

<b>Weights and measures (metric)</b>		<b>General</b>		<b>Measures (fisheries)</b>	
centimeter	cm	Alaska Administrative Code	AAC	fork length	FL
deciliter	dL	all commonly accepted abbreviations	e.g., Mr., Mrs., AM, PM, etc.	mid-eye to fork	MEF
gram	g	all commonly accepted professional titles	e.g., Dr., Ph.D., R.N., etc.	mid-eye to tail fork	METF
hectare	ha	at	@	standard length	SL
kilogram	kg	compass directions:		total length	TL
kilometer	km	east	E		
liter	L	north	N	<b>Mathematics, statistics</b>	
meter	m	south	S	<i>all standard mathematical signs, symbols and abbreviations</i>	
milliliter	mL	west	W	alternate hypothesis	H <sub>A</sub>
millimeter	mm	copyright	©	base of natural logarithm	<i>e</i>
		corporate suffixes:		catch per unit effort	CPUE
<b>Weights and measures (English)</b>		Company	Co.	coefficient of variation	CV
cubic feet per second	ft <sup>3</sup> /s	Corporation	Corp.	common test statistics	(F, t, $\chi^2$ , etc.)
foot	ft	Incorporated	Inc.	confidence interval	CI
gallon	gal	Limited	Ltd.	correlation coefficient (multiple)	R
inch	in	District of Columbia	D.C.	correlation coefficient (simple)	r
mile	mi	et alii (and others)	et al.	covariance	cov
nautical mile	nmi	et cetera (and so forth)	etc.	degree (angular)	°
ounce	oz	exempli gratia (for example)	e.g.	degrees of freedom	df
pound	lb	Federal Information Code	FIC	expected value	<i>E</i>
quart	qt	id est (that is)	i.e.	greater than	>
yard	yd	latitude or longitude	lat. or long.	greater than or equal to	≥
		monetary symbols (U.S.)	\$, ¢	harvest per unit effort	HPUE
<b>Time and temperature</b>		months (tables and figures): first three letters	Jan,...,Dec	less than	<
day	d	registered trademark	®	less than or equal to	≤
degrees Celsius	°C	trademark	™	logarithm (natural)	ln
degrees Fahrenheit	°F	United States (adjective)	U.S.	logarithm (base 10)	log
degrees kelvin	K	United States of America (noun)	USA	logarithm (specify base)	log <sub>2</sub> , etc.
hour	h	U.S.C.	United States Code	minute (angular)	'
hour	h	U.S. state	use two-letter abbreviations (e.g., AK, WA)	not significant	NS
minute	min			null hypothesis	H <sub>0</sub>
second	s			percent	%
<b>Physics and chemistry</b>				probability	P
all atomic symbols				probability of a type I error (rejection of the null hypothesis when true)	$\alpha$
alternating current	AC			probability of a type II error (acceptance of the null hypothesis when false)	$\beta$
ampere	A			second (angular)	"
calorie	cal			standard deviation	SD
direct current	DC			standard error	SE
hertz	Hz			variance	
horsepower	hp			population	Var
hydrogen ion activity (negative log of)	pH			sample	var
parts per million	ppm				
parts per thousand	ppt, ‰				
volts	V				
watts	W				

***FISHERY DATA SERIES NO. 10-65***

**PARTICIPATION, EFFORT, AND HARVEST IN THE SPORT FISH  
BUSINESS/GUIDE LICENSING AND LOGBOOK PROGRAMS, 2009**

by

Dora Sigurdsson

and

Bob Powers

*Division of Sport Fish Research and Technical Services, Anchorage*

Alaska Department of Fish and Game  
Division of Sport Fish, Research and Technical Services  
333 Raspberry Road, Anchorage, Alaska, 99518-1599

September 2010

ADF&G Fishery Data Series was established in 1987 for the publication of Division of Sport Fish technically oriented results for a single project or group of closely related projects, and in 2004 became a joint divisional series with the Division of Commercial Fisheries. Fishery Data Series reports are intended for fishery and other technical professionals and are available through the Alaska State Library and on the Internet: <http://www.sf.adfg.state.ak.us/statewide/divreports/html/intersearch.cfm> This publication has undergone editorial and peer review.

*Dora Sigurdsson and Bob Powers  
Alaska Department of Fish and Game, Division of Sport Fish, Research and Technical Services  
333 Raspberry Road, Anchorage, AK 99518-1599, USA*

*This document should be cited as:*

*Sigurdsson, D. and B. Powers. 2010. Participation, effort, and harvest in the sport fish business/guide licensing and logbook programs, 2009. Alaska Department of Fish and Game, Fishery Data Series No. 10-65, Anchorage.*

The Alaska Department of Fish and Game (ADF&G) administers all programs and activities free from discrimination based on race, color, national origin, age, sex, religion, marital status, pregnancy, parenthood, or disability. The department administers all programs and activities in compliance with Title VI of the Civil Rights Act of 1964, Section 504 of the Rehabilitation Act of 1973, Title II of the Americans with Disabilities Act (ADA) of 1990, the Age Discrimination Act of 1975, and Title IX of the Education Amendments of 1972.

**If you believe you have been discriminated against in any program, activity, or facility please write:**

ADF&G ADA Coordinator, P.O. Box 115526, Juneau, AK 99811-5526  
U.S. Fish and Wildlife Service, 4401 N. Fairfax Drive, MS 2042, Arlington, VA 22203  
Office of Equal Opportunity, U.S. Department of the Interior, 1849 C Street NW MS 5230, Washington DC 20240

**The department's ADA Coordinator can be reached via phone at the following numbers:**

(VOICE) 907-465-6077, (Statewide Telecommunication Device for the Deaf) 1-800-478-3648,  
(Juneau TDD) 907-465-3646, or (FAX) 907-465-6078

**For information on alternative formats and questions on this publication, please contact:**

ADF&G Division of Sport Fish, Research and Technical Services, 333 Raspberry Road, Anchorage AK 99518 (907) 267-2375.

# TABLE OF CONTENTS

	<b>Page</b>
LIST OF TABLES.....	ii
LIST OF FIGURES.....	ii
LIST OF APPENDICES.....	iii
ABSTRACT.....	1
BACKGROUND.....	1
Guide and Business Registration and Licensing.....	1
Logbooks.....	2
Vessel Registration.....	5
METHODS.....	5
Guide and Business Licensing.....	5
Logbook Data Collection.....	6
Saltwater Logbook Forms.....	6
Freshwater Logbook Forms.....	7
Vessel Registration.....	8
Logbook Outreach and Verification.....	8
Outreach.....	8
Validation.....	9
Verification.....	11
RESULTS.....	11
Guide and Business Licensing.....	11
Vessels.....	13
Saltwater.....	13
Freshwater.....	14
Trips.....	15
Saltwater.....	15
Freshwater.....	15
Logbook Trip Effort and Harvest.....	16
Saltwater.....	16
Freshwater.....	16
DISCUSSION.....	20
Guide and Business Licensing.....	20
Logbooks.....	20
ACKNOWLEDGEMENTS.....	21
REFERENCES CITED.....	22
APPENDIX A SPORT FISH BUSINESS OWNER/GUIDE LICENSE APPLICATION.....	23
APPENDIX B SALTWATER LOGBOOK FORMS.....	27
APPENDIX C FRESHWATER LOGBOOK FORMS.....	31
APPENDIX D VESSEL REGISTRATION FORMS, DECALS AND TAGS.....	35
APPENDIX E ADF&G COMMISSIONER STATEMENT.....	39
APPENDIX F SALTWATER EDITING RESULTS.....	41
APPENDIX G FRESHWATER EDITING RESULTS.....	43
APPENDIX H SALTWATER LOGBOOK SUMMARIES BY AREA AND PORT OF OFFLOADING.....	45
APPENDIX I FRESHWATER LOGBOOK SUMMARIES BY AREA.....	51

## LIST OF TABLES

<b>Table</b>		<b>Page</b>
1.	Division of Sport Fish regions and management areas. ....	3
2.	Number of licensed businesses and guides by region, 2006–2009.....	12
3.	Number of active saltwater businesses and guides by region, 2006–2009.....	13
4.	Number of active freshwater businesses and guides by region, 2006–2009.....	13
5.	Number of registered and active saltwater vessels by region, 2006–2009.....	14
6.	Number of active saltwater vessels that made at least one trip in each target category, by region, 2006–2009.....	14
7.	Number of registered freshwater vessels by year and region, 2006–2009.....	14
8.	Number of saltwater trips by targeted species by region, 2006–2009.....	15
9.	Number of freshwater trips by region, 2006–2009.....	16
10.	Saltwater and freshwater trips and angler days by region, 2006–2009.....	17
11.	Saltwater salmon effort and harvest by region and angler type, 2009.....	18
12.	Saltwater bottomfish effort and harvest by region and angler type, 2009.....	18
13.	Freshwater effort and harvest by region and angler type, 2009.....	19

## LIST OF FIGURES

<b>Figure</b>		<b>Page</b>
1.	Map of Alaska and Division of Sport Fish regions and sport harvest areas, 2008.....	4
2.	International Pacific Halibut Commission (IPHC) regulatory areas.....	5

# LIST OF APPENDICES

Appendix	Page
A1. Sport fish business owner/guide license application, 2009. ....	24
B1. Saltwater charter logbook form, 2009. ....	28
C1. Freshwater guide logbook from, 2009. ....	32
D1. Saltwater sport fish charter logbook sign-out and vessel registration form, 2009. ....	36
D2. Freshwater sport fish guide vessel registration form, 2009. ....	37
D3. Vessel decal, 2009. ....	38
D4.. Vessel tab, 2009. ....	38
E1. December 2005 ADF&G commissioner statement detailing strategies for reporting of Pacific halibut harvest for the saltwater charter logbook. ....	40
F1. Saltwater editing results, 2009. ....	42
G1. Freshwater editing results, 2009. ....	44
H1. Saltwater logbook salmon participation, effort, kept and released by area and port of offloading, Southeast Alaska, 2009. ....	46
H2. Saltwater logbook salmon participation, effort, kept and released by area and port of offloading, Southcentral Alaska, 2009. ....	47
H3. Saltwater logbook salmon participation, effort, kept and released by region, statewide, 2009. ....	47
H4. Saltwater logbook bottomfish participation, effort, kept and released by area and port of offloading, Southeast Alaska, 2009. ....	48
H5. Saltwater logbook bottomfish participation, effort, kept and released by area and port of offloading, Southcentral Alaska, 2009. ....	49
H6. Saltwater logbook bottomfish participation, effort, kept and released by region, statewide, 2009. ....	49
I1. Freshwater logbook participation by site code and area, Southeast Alaska, 2009. ....	52
I2. Freshwater logbook participation by site code and area, Southcentral Alaska, 2009. ....	53
I3. Freshwater logbook participation by site code and area, AYK Alaska, 2009. ....	56
I4. Freshwater logbook participation by region, statewide, 2009. ....	56
I5. Freshwater logbook angler days and species kept by area and site, Southeast Alaska, 2009. ....	57
I6. Freshwater logbook angler days and species kept by area and site, Southcentral Alaska, 2009. ....	58
I7. Freshwater logbook angler days and species kept by area and site, AYK Alaska, 2009. ....	61
I8. Freshwater logbook angler days and species kept by region, statewide, 2009. ....	61
I9. Freshwater logbook angler days and species released by area and site, Southeast Alaska, 2009. ....	62
I10. Freshwater logbook angler days and species released by area and site, Southcentral Alaska, 2009. ....	63
I11. Freshwater logbook angler days and species released by area and site, AYK Alaska, 2009. ....	66
I12. Freshwater logbook angler days and species released by region, statewide, 2009. ....	66





## **ABSTRACT**

In 2009, 1,529 sport fishing businesses and 3,150 guides licensed under the Alaska Department of Fish and Game guide and business licensing program, signifying intent to provide sport fishing services in Alaska. Of the 1,529 sport fishing businesses registered in 2009, 1,407 were combination owner/guide licenses. Based on the 2009 physical addresses of both the businesses and guides, 88% of the businesses were residents of Alaska, and 12% were from other residency strata (defined as nonresidents), 73% of the guides were residents and 27% were nonresidents.

Of the 2,158 saltwater logbooks issued in 2009, 1,736 were activated, and of the 2,259 freshwater logbooks issued in 2009, 1,500 were activated. Of those businesses that submitted logbook information in 2009, 58% offered saltwater services, and 42% offered freshwater guided services. In 2009, logbook records show that 1,215 saltwater vessels were active. Of those active saltwater vessels, 55% were active in Southeast Alaska and 45% were active in Southcentral Alaska.

A total of 48,506 saltwater charter trips and 229,896 saltwater angler days of fishing occurred in 2009. Of the statewide saltwater trips, 83% of the saltwater angler days were nonresidents, 15% were residents and 2% were crew, comped fishing (nonpaying anglers) or unknown residency. In freshwater, 37,554 trips and 111,362 angler days occurred in 2009. Of the statewide freshwater trips, 88% of the angler days were nonresidents, 10% were residents, and 2% were crew, comped fishing or unknown residency.

2009 saltwater salmon harvests show that coho and king salmon made up 67% and 9% of the total salmon harvest respectively statewide. Saltwater bottomfish harvests in 2009 show that Pacific halibut were the predominant species with 62% of the total saltwater bottomfish harvest statewide. In freshwater, coho salmon were the predominant harvested species, followed by sockeye and then king salmon.

Key words: Sport fishing, guide and business registration, freshwater logbook, saltwater logbook, participation, effort, harvest, sport fishing vessel, Pacific halibut, salmon, bottomfish, Southeast Alaska, Southcentral Alaska

## **BACKGROUND**

The Alaska Department of Fish and Game (ADF&G) Division of Sport Fish (DSF) has operated a program since 1998 to register and license both sport fishing guides and sport fishing guide businesses. Saltwater information on sport fishing participation, effort, and harvest has been collected since 1998. Freshwater information on fishing participation, effort and harvest has been collected since 2005. This report briefly summarizes the approach, history, and results of this program for 2009.

### **GUIDE AND BUSINESS REGISTRATION AND LICENSING**

The activities of the guided sport fishing industry in Alaska have significantly increased in recent years with implications to fish allocation and management decisions. Resolution of related issues was hampered by a lack of information regarding the industry and its impact on fishery resources in many parts of Alaska. The sport fishing guide and business registration and licensing programs were designed to provide a comprehensive system to better define this diverse industry throughout Alaska. A brief history of the statewide registration and licensing process follows.

Beginning in May 1995 the owner(s) of any business that engaged in sport fish guiding of anglers anywhere in Alaska were required to register their business information, employees acting as sport fishing guides for the business, and list all vessels used for guiding. In 1997, sport fishing guides were required to register and provide information about the employing business (Dean 2001; Dean and Howe 1999).

In 1998, the Alaska Board of Fisheries (BOF) adopted new statewide sport fishing guide registration regulations and definitions during their February Statewide Finfish meeting in

Girdwood, Alaska (5 AAC 75.075: *Sport Fishing Services and Sport Fishing Guide Services; License Requirements; Regulations of Activities*). It should be stressed that this was a registration process, not a licensing process. No fees were required and businesses and guides were allowed to provide services in any area of the state, assuming other regulatory requirements were met. In 1998, ADF&G continued to register guide businesses and guides, but stopped registering charter vessels, because the Commercial Fisheries Entry Commission (CFEC) implemented a licensing program for all vessels to be used for guided sport fishing. From 1998 through 2004, ADF&G continued to register sport fishing businesses and sport fishing guides.

On May 11, 2004, the Alaska Legislature adopted House Bill 452 (HB 452), that established licensing requirements for sport fishing guide business owners and sport fishing guides on a statewide basis. This bill was created to establish minimum professional standards required of both freshwater and saltwater sport fish guides and business owners before a license could be obtained. The standards were established to protect consumers and to promote the viability and legitimacy of a professional sport fish guide industry. Businesses providing sport fish guided services were now required to obtain a State of Alaska Occupational Business License and hold liability insurance with a minimum of \$300,000 coverage for all incidents in a year (AS 16.40.260). Licensed sport fishing guides were required (1) to be citizens of the United States, Canada, or Mexico, (2) hold a current first aid card, (3) have a current year Alaska sport fishing license and (4) have a valid U.S. Coast Guard operator's license if they were to operate a motorized vessel in navigable waters. License application forms and the information collected have remained consistent in design since 2006 (Sigurdsson and Powers 2009).

## **LOGBOOKS**

In February, 1998 the BOF adopted regulations (5 AAC 75.076) requiring logbooks for saltwater charter vessels statewide. Information on the amounts and locations of charter activity and actual participation and harvest by individual vessels and businesses was needed by the BOF for allocation and management of Chinook salmon *Oncorhynchus tshawytscha*, rockfish *Sebastes* spp., and lingcod *Ophiodon elongatus*, and by the North Pacific Fisheries Management Council (NPFMC) for allocation of Pacific halibut *Hippoglossus stenolepis*. To meet these information needs ADF&G implemented a saltwater sport fishing charter vessel logbook program for DSF Region I, Southeast Alaska (Southeast), and Region II, Southcentral Alaska (Southcentral; Table 1; Figure 1).

In 1999, the NPFMC was considering proposals to limit the guided sport halibut harvest. Their concerns were: (1) that growth in this fishery was reallocating resources away from the individual fishing quota (IFQ) commercial longline fishery, and (2) that in some areas there was overcapitalization and localized depletion of the halibut resource. NPFMC endorsed a two-prong approach to resolve the perceived impact of increased guided charter halibut fishing. The first was establishment of guideline harvest limits (GHL) for International Pacific Halibut Commission (IPHC) Areas 2C and 3A (Figure 2), and the second was a process to establish local area management plans for halibut fisheries in coastal communities.

Since 1998, the logbook design has undergone annual revisions, driven primarily by changes or improvements in the collection of halibut, lingcod and rockfish data through the logbook program, Statewide Harvest Survey (SWHS), and expanded port sampling programs. House Bill 452, adopted in 2004, not only established new licensing requirements, but also established a logbook reporting requirement for all freshwater businesses in addition to the existing saltwater

reporting requirements. For various reasons, both technical and policy-based, information on halibut harvests was not collected from 2002 through 2005. The collection of halibut data was resumed in 2006. In addition, the 2006 logbook was redesigned to require reporting of angler license numbers and the harvest and release numbers by angler in an effort to improve reporting and facilitate evaluation of the quality of logbook data.

The data from logbooks are compiled to show where fishing effort occurs, the extent of participation, and the species and numbers of fish kept and released by individual clients. This information is used for regulation and the development and management of fisheries, for project evaluation, and for formulation of department policies and priorities that reflect angler needs, concerns, and preferences. It also provides ADF&G with a tool to promote management of Alaska's resources for sustained yield.

Table 1.—Division of Sport Fish regions and management areas.

Regions	
SE	Southeast Alaska
SC	Southcentral Alaska
AYK	Arctic-Yukon-Kuskokwim
Areas	
Southeast Alaska	
A	Ketchikan
B	Prince of Wales Island
C	Kake, Petersburg, Wrangell, Stikine
D	Sitka
E	Juneau
F	Haines-Skagway
G	Glacier Bay
H	Yakutat
Southcentral Alaska	
J	North Gulf Coast/Prince William Sound
K	Knik Arm Drainage
L	Anchorage
M	Susitna River Drainage
N	West Side Cook Inlet
P	Kenai Peninsula
Q	Kodiak
R	Naknek River Drainage/Alaska Peninsula Area
S	Kvichak River Drainage
T	Nushagak, Wood River and Togiak
Arctic-Yukon-Kuskokwim	
I	Upper Copper River Drainage
U	Tanana River Drainage
V	Kuskokwim River/Kuskokwim Bay Drainages
W	Norton Sound/Seward Peninsula
X	Northwest Alaska
Y	Yukon River Drainage
Z	North Slope/Brooks Range



Figure 1.—Map of Alaska and Division of Sport Fish regions and management areas.

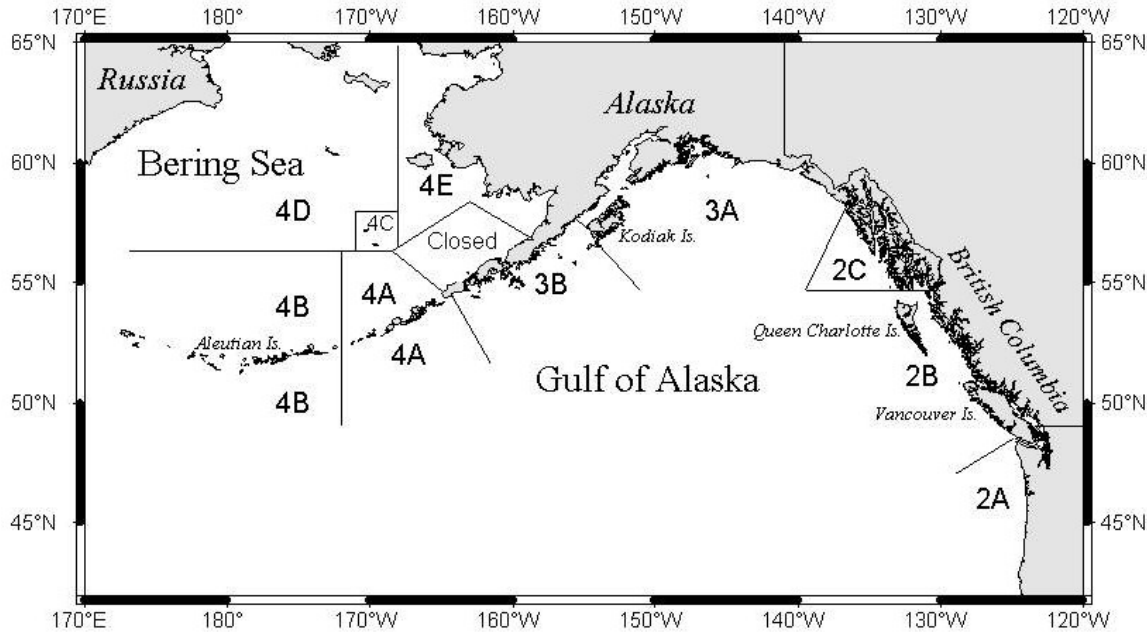


Figure 2.—International Pacific Halibut Commission (IPHC) regulatory areas.

Currently, a logbook record is required for every chartered or guided trip taken with clients, defined as an outing with one group of clients that ends when the clients and their fish (if fish were kept) are offloaded. Each trip is associated with an individual licensed business and guide.

## VESSEL REGISTRATION

In addition to establishing a licensing program and statewide freshwater logbook requirement, HB 452 included establishment of a vessel registration program to be conducted by ADF&G as part of the logbook program to monitor the number of vessels used in the guided marine and freshwater fisheries. All boats used in marine or freshwater are referred to as “charter or guide boats” regardless of their size or the manner in which they are used. All vessels used in the charter guide industry were required to be registered with ADF&G.

## METHODS

### GUIDE AND BUSINESS LICENSING

Businesses and guides can be licensed to provide sport fishing guided services if they meet the minimum qualifications specified in regulation (AS 16.40.260 and AS 16.40.270).

Beginning in 2006, each January the Division of Sport Fish mailed renewal license applications to each sport fishing guide and sport fishing business that was licensed in the previous year. In addition, guides and businesses could obtain a license in person at local ADF&G offices or through the Internet. The license application could be used in three ways (Appendix A):

- To license a business only,
- To license a guide only,
- To license a combination business and guide (an owner/operator where the owner also conducted the guiding).

The licensing process collected business owner or guide name, permanent mailing information, permanent and inseason phone number if applicable. Additionally, the name of the business, name of the business owner, occupational business license number, insurance company information and insurance binder or policy number and effective dates were required. A guide is required to be a citizen of the United States, Canada, or Mexico, hold a current first aid card and have a current year Alaska sport fishing license along with any tags or permits required for specific fisheries. If a guide planned to operate a motorized vessel on navigable waters with clients on board, the guide was required to have a current U.S. Coast Guard Operator's License and provide that number and expiration date on the license application.

Unique license numbers were assigned according to how licensing occurred. License numbers did not remain the same in subsequent years. If an operator or guide licensed at an ADF&G office, a pre-numbered application was used and that number became the license number for that year. Renewal or internet license applications are numbered sequentially by the computer database that processed the information

Once the license applications were reviewed for completeness and accuracy, DSF mailed a wallet-sized license to each guide or business. Those applicants who licensed by going to an ADF&G office received a copy of their license, which allowed them to operate immediately. Those who applied on the Internet or with the renewal application, were required to wait until they received their license in the mail prior to operating or providing guiding services.

## **LOGBOOK DATA COLLECTION**

Logbook reporting is a mandatory process governed by regulation (AS 16.40.280). As such, the reporting process was considered to be a census of all charter/guided trips. Logbooks were available and issued from ADF&G area offices located statewide, in addition to vendors located in Valdez and Seward.

The statewide logbook has remained consistent in design since 2006, with few annual changes occurring in logbook layout. In 2006, both the freshwater and saltwater logbooks were redesigned to require reporting of angler license numbers and the harvest and release numbers by angler in an effort to improve reporting and facilitate evaluation of the quality of logbook data. Some of the annual design changes in the saltwater logbook were driven primarily by changes or improvements in the collection of halibut and rockfish data, and by requests from the NPFMC for information needed for allocation of halibut. Some changes were made to improve or simplify the use of the forms based on operator input, and to improve the capture of client and crew harvest information. Other than a few minor design changes, both the saltwater and freshwater logbooks collected the same information during all four years.

### **Saltwater Logbook Forms**

A saltwater logbook consisted of the cover page, schedule of reporting deadlines, one logbook check out sheet to show the business to which the logbook was issued and to register the saltwater vessel, a set of instructions for filling out the information on the logbook sheets, and 50 data sheets to record trip information (Appendix B). Data collected on each of the 50 pages consisted of:

- ADF&G business owner license number;
- ADF&G guide license number for the guide leading the trip;

- Date that fishing took place;
- Port or community where fishing began;
- Port or community of off loading,
- Primary statistical area fished while targeting salmon or bottomfish;
- Number of boat hours fished;
- Crew, client, and “comped” angler’s current ADF&G sport fishing license or PID (permanent fishing license) number, birth date of youth anglers under the age of 16;
- First and last name of each client and youth angler;
- Client residency(Alaska resident/nonresident of Alaska);
- Information on if crew fished or if angler was “comped”,
- A breakdown by fish species kept and released by each individual angler.

During a saltwater charter trip, the operator must decide if his/her gear or fishing methods are effectively targeting bottomfish, salmon or both. A 6-digit statistical code where most of the fish were caught or targeted is logged for each trip. Statistical maps were provided to the operator upon logbook issuance.

Saltwater species information collected included kept and released information for “large” Chinook (king salmon) 28” and longer and for “small” Chinook (king salmon) less than 28”. Also recorded were coho *O. kisutch*, sockeye *O. nerka*, pink *O. gorbuscha*, and chum *O. keta* salmon, halibut, lingcod, pelagic rockfish, yelloweye, and other nonpelagic rockfish, salmon shark *Lamna ditropis*, and a category for the number of all other species not already listed (Appendix B).

To determine the number of businesses and guides that were “active” in the industry, a cross reference of business and guide licenses is made to the logbooks to determine if actual guided trips were provided. If ADF&G received at least one charter vessel trip form that reported targeted effort, the charter operation turning in the form was considered an “active” bottomfish or salmon charter operator with an “active” vessel.

### **Freshwater Logbook Forms**

A freshwater logbook consisted of the cover page, schedule of reporting deadlines, one logbook check out sheet to show the business to which the logbook was issued, a freshwater vessel registration page that collects the unique AK # assigned by the Department of Motor Vehicles (DMV) or a United States Coast Guard (USCG) documentation number and primary drainage, a set of instructions for filling out the information on the logbook sheets, and 50 data sheets to record trip information (Appendix C). Data collected on each of the 50 pages consisted of:

- ADF&G guide license number,
- Date that fishing took place,
- Specific name of river, stream or lake fished,
- Site code of site fished as reference within a list provided with each logbook,
- Number of logbook pages used for a specific trip,
- Name of any other species kept,
- Crew, client, and “comped” angler’s current ADF&G sport fishing license number, and a youth angler designation for anglers under 16 years of age.

- Client residency,
- A breakdown by fish species kept and released by each individual angler.

Upon acquiring a freshwater logbook, the operator registers all vessels that may be used during the course of the fishing season. Freshwater vessel registration requires that the vessel already have a unique AK # assigned by DMV or a USCG documentation number. Freshwater vessels primarily have AK #'s. The operator must provide the AK # and indicate the primary freshwater drainage where the vessel will operate.

The freshwater logbook does not collect targeted species information like the saltwater logbook, it collects information on species kept and released regardless of what was targeted or sought after. A trip is counted if a logbook data page is submitted with effort information regardless of catch. Freshwater trips are assigned a region of the state based on the name of the site fished, each freshwater site is assigned a unique regional alpha code followed by a numeric code within the region in which it is located (Table 1).

Freshwater information collected were: kept and released numbers for king, coho, and sockeye salmon, cutthroat *O. clarkii*, rainbow and steelhead trout *O. mykiss*, lake trout *Salvelinus namaycush*, Dolly Varden *S. malma*, Arctic grayling *Thymallus arcticus*, northern pike *Esox lucius*, sheefish *Stenodus leucichthys* and a category for the number of all other fish not already listed.

Business operators are allowed to and even encouraged to pick up as many logbooks as they anticipated needing during the course of the season. The ability to acquire as many logbooks as are needed prevents them from having to make multiple trips to an ADF&G office. As a result, numerous businesses ended up getting more logbooks than were eventually used. Because of this, ADF&G differentiates between the number of logbooks issued versus the number that are actually used or activated.

## **Vessel Registration**

Vessel registration information was collected when a saltwater or freshwater logbook was issued to a business (Appendix D1 and D2). Registration information included the Department of Motor Vehicles (DMV) number or the U.S. Coast Guard vessel documentation number. Upon completion of vessel registration with ADF&G, each vessel was provided with two decals and year tags to indicate that the vessel is to be used in the guide industry (Appendix D3 and D4). Decals must be applied and visible on both sides of the vessel.

## **LOGBOOK OUTREACH, VALIDATION AND VERIFICATION**

In December 2005, the Commissioner of the ADF&G issued a statement that detailed the strategies for assuring the accuracy of the reporting of Pacific halibut harvest for the saltwater charter logbook. (Appendix E).

### **Outreach**

An outreach program was initiated to reach as many operators as possible to field questions and to ensure compliance with the reporting requirements. The outreach program was conducted on-site (in the field) by ADF&G employees and off-site from the Anchorage ADF&G office.

#### ***On-site Logbook Inspections***

Logbook outreach occurred in parts of the Southeast and Southcentral regions in conjunction with existing creel survey and port sampling programs. "Courtesy logbook inspections" were



conducted as time allowed by ADF&G creel and port sampling technicians during their regular dockside checks of the primary fisheries from May through September. In addition, management staff conducted periodic checks of charter logbooks, mostly in 2006. Logbooks were inspected to make sure that they were filled out correctly, and staff answered any questions about how they should be filled out. These checks were not intended for enforcement or for evaluating the accuracy of data but rather as another opportunity to encourage compliance and completeness and as an indicator of how important logbook data are to ADF&G.

### ***Off-site Logbook Review***

The goal of the outreach program was to ensure compliance with all reporting requirements, by emphasizing education early in the season. Off-site outreach was conducted by the Division of Sport Fish, Research and Technical Services (RTS) staff in the Anchorage office. All logbook trip data was subject to a reporting deadline. Logbook data pages were required to be completed and returned to ADF&G on a weekly basis as specified in the instructions of both the saltwater and freshwater logbooks. Timely submission was a requirement to facilitate recall and to allow ADF&G staff to review each data page for completeness and legibility. All logbook data sheets were received by RTS in Anchorage where ADF&G data entry staff date-stamped each data page with the date received, reviewed each page for incomplete, illegible or erroneous information, and conducted phone calls to business owners and guides for follow up and clarification. Calls early in the season were intended to alleviate repeat errors in reporting which were thought to result in fewer calls being necessary later in the fishing season.

As logbook data sheets were received, RTS staff conducted reviews by monitoring all data for completion and legibility prior to data entry. In the event that some of the logbook data sheets required verification from the operator or guide, staff would place phone calls

Phone calls to the business owners and guides significantly improved the quality of the data, minimized reoccurring mistakes by the guide, increased compliance, and contributed to the outreach portion of this program. Logbook data entry staff contacted charter operators to resolve logbook reporting issues and to improve future reporting. These calls were intended to improve data quality and reinforce the message to the guide industry that logbook data are important and are consistently being reviewed. In 2006, 3,011 calls were made to operators, 1,415 in 2007 and 2,160 in 2008. Follow up phone calls have become a valuable outreach tool and will continue to be a standard procedure in the future.

## **Validation**

### ***In-season Saltwater Logbook Editing***

Computer routines have been written to check and validate the following saltwater data fields during the fishing season as logbook data pages are returned.

- Validate the guide license is filled in and valid.
- Validate the date is filled in and in 2009.
- Validate the port of landing is entered and is on the valid port site table.
- If hours are listed verify a statistical area is listed for the appropriate effort.
- Verify the statistical area listed is a valid statistical area.
- If there is harvest verify the appropriate statistical area is filled in.

- If a statistical area is filled out verify the appropriate hours field is filled in.
- Verify a statistical area is filled in (both can't be blank).
- Verify hours are filled in (both can't be blank).
- Validate possible incorrect stat areas that appear to be valid;
  - If data entry mistakenly enters the hours info in the statistical area the first statistical area that starts with the same number will be auto populated and accepted as valid.
- Check to see which log pages were turned in more than 7 days after the due date.
- Verify logbooks are checked out to a business and not a guide.
- Check all records with more than 12 hours listed.
- Check for duplicate logbook pages.
- Check trip records that don't have paying angler records.
- Verify the date fished is not greater than the date the log page is received by ADF&G.

### ***Post-season Saltwater Logbook Editing***

At the end of the fishing season, computer routines check and validate the above listed items in addition to the following saltwater data fields in preparation for developing summaries (Appendix F).

- All of the in-season edits are re-run.
- Check to make sure fish kept are within the limits for the area fished.
- Validate and review excessively large numbers of released fish based on frequency distribution analysis.

### ***In-season Freshwater Logbook Editing***

Computer routines have been written to check and validate the following freshwater data fields during the fishing season as logbook data pages are returned.

- Validate the guide license number is filled in and valid.
- Validate the date is filled in and in 2009.
- Validate the site code is entered and is on the valid site code table.
- Check to make sure there are paying clients (not comped) on the trip.
- Check to see which log pages were turned in more than 7 days after the due date.
- Check for duplicate logbook pages.
- Verify the date fished is not greater than the date the log page is received by ADF&G.
- Verify logbooks are checked out to a business and not a guide.
- Verify Kenai River trips weren't taken on Sunday or Monday in May – July.
- Check trip records that don't have angler records.

### ***Post-season Freshwater Logbook Editing***

At the end of the fishing season, computer routines check and validate the above listed items in addition to the following freshwater data fields in preparation for developing summaries (Appendix G).

- All of the in-season edits are re-run.
- Check to make sure fish kept are within the limits for the site fished.
- Check to make sure the fish caught are valid species for the site fished.
- Validate excessively large numbers of released fish based on frequency distribution analysis.
- Recode 'Other' site codes to correct values if they exist on the site code table.
- Recode sites with 'System' in the description to a more specific site code if available.
- Check records with 6 clients to verify the next page isn't part of the same trip.

### **Verification**

Logbook data were compared to actual counts of harvested fish (verified) and to reported harvest data (unverified) from onsite interviews. These comparisons are ongoing and are part of a more comprehensive evaluation of logbook data quality (Meyer and Powers *Unpublished*).

Two unique methods will be used to conduct post-season verification of logbook data:

1. A freshwater and saltwater comparison will be made between logbook data and guided trip information collected from the Alaska Statewide Harvest Survey (SWHS; Jennings et al. 2010).
2. The data collected from the logbooks was compared to the data collected in the saltwater creel programs administered through ADF&G. Saltwater creel programs include the *Assessment of Recreational Halibut and Groundfish Harvest in Southcentral Alaska* program in Homer, the *Haines Marine Sport Fishery Harvest in Southeast Alaska* (Chapell *In prep*), and the *Harvest estimates for selected marine sport fisheries in Southeast Alaska* (Wendt and Jaenicke *In prep*).

## **RESULTS**

### **GUIDE AND BUSINESS LICENSING**

In 2009, 1,529 sport fishing businesses and 3,150 sport fishing guides were licensed with ADF&G to provide sport fishing services in Alaska. The total number of businesses and guides includes all saltwater and freshwater operators. Of the 1,529 sport fishing businesses licensed in 2009, 1,407 were combination owner/guide licenses. Physical addresses of both the businesses and guides in 2009 indicated that 88% of the businesses reported Alaska residency, and 12% were from other residency strata (defined as nonresidents), 73% of the guides were residents and 27% were nonresidents.

The licensed businesses and guides were subtotaled by region for Southeast, Southcentral, and Other Alaska, including the Arctic-Yukon-Kuskokwim area and nonresident license applicants. In 2009 27% of the licensed businesses had physical addresses in Southeast, 57% in Southcentral, 5% had permanent addresses in other parts of Alaska, and 12% had nonresident addresses based on their license applications. From 2006 through 2009, an average of 21% of

the licensed guides had permanent addresses in Southeast, 47% in Southcentral, 5% in other parts of Alaska and 27% had nonresident addresses based on their license applications (Table 2).

Based on the submission of logbook data pages with trip information in 2006, 777 businesses provided saltwater services, 503 provided freshwater services and 140 businesses provided both freshwater and saltwater services. In 2007, 786 businesses provided saltwater services, 513 provided freshwater services and 132 businesses provided both freshwater and saltwater services. In 2008, 766 businesses provided saltwater services, 508 provided freshwater services and 122 businesses provided both freshwater and saltwater services (Sigurdsson and Powers 2009). In 2009, 691 businesses provided saltwater services, 474 provided freshwater services and 112 businesses provided both freshwater and saltwater services (Table 3 and Table 4).

Table 2.—Number of licensed businesses and guides by region, 2006–2009.

Region <sup>b</sup>	Licensed Businesses <sup>a</sup>			
	2006	2007	2008	2009
SE	38	39	43	34
SC	62	70	66	65
Other Alaska	5	2	2	2
Resident Total	105	111	111	101
Other U.S.	25	18	23	21
Foreign	0	0	0	0
Nonresident Total	25	18	23	21
<b>Total</b>	<b>130</b>	<b>129</b>	<b>134</b>	<b>122</b>
Region <sup>b</sup>	Combination Licenses <sup>c</sup>			
	2006	2007	2008	2009
SE	432	422	413	372
SC	891	910	887	812
Other Alaska	71	74	75	68
Resident Total	1,394	1,406	1,375	1,252
Other U.S.	153	160	150	155
Foreign	0	0	0	0
Nonresident Total	153	160	150	155
<b>Total</b>	<b>1,547</b>	<b>1,566</b>	<b>1,525</b>	<b>1,407</b>
Region <sup>b</sup>	Licensed Guides <sup>d</sup>			
	2006	2007	2008	2009
SE	346	334	319	272
SC	731	777	765	678
Other Alaska	66	75	80	87
Resident Total	1,143	1,186	1,164	1,037
Other U.S.	762	779	831	705
Foreign	2	0	2	1
Nonresident Total	764	779	833	706
<b>Total</b>	<b>1,907</b>	<b>1,965</b>	<b>1,997</b>	<b>1,743</b>

Note: Data are current as of 05/26/2010.

<sup>a</sup> Business only licenses do not include the owner as a guide.

<sup>b</sup> Region assigned based on physical address indicated at time of licensing.

<sup>c</sup> Combination licenses that include the business and the business owner as the guide.

<sup>d</sup> Guide license only, no business license.

Table 3.–Number of active saltwater businesses and guides by region, 2006–2009.

Region <sup>c</sup>	Active Businesses <sup>a</sup>				Active Guides <sup>b</sup>			
	2006	2007	2008	2009	2006	2007	2008	2009
SE	439	430	429	387	881	873	860	738
SC	479	488	459	417	772	766	740	661
<b>Total<sup>d</sup></b>	917	918	888	803	1,603	1,602	1,562	1,355

Note: Data are current as of 05/25/2010.

<sup>a</sup> Active Business counts are based on the business number listed on the signout sheet of a logbook (this can be a business only or a combined business/guide license) and the submission of at least one log page from the logbook.

<sup>b</sup> Active Guide counts are based on the guide number written on each log page (this can be a guide only or a combined business/guide license) and the submission of at least one log page showing that guide license number.

<sup>c</sup> Region is based on the port of offloading, salmon and bottomfish statistical area.

<sup>d</sup> Total is not additive because a business or guide could operate in both regions. Includes businesses and guides that offered both saltwater and freshwater services.

Table 4.–Number of active freshwater businesses and guides by region, 2006–2009.

Region <sup>c</sup>	Active Businesses <sup>a</sup>				Active Guides <sup>b</sup>			
	2006	2007	2008	2009	2006	2007	2008	2009
SE	69	72	70	63	173	176	178	143
SC	526	528	512	475	1,220	1,272	1,303	1,089
AYK	71	68	69	67	194	224	222	203
Unknown	0	4	7	3	0	4	7	3
<b>Total<sup>d</sup></b>	643	645	630	586	1,518	1,581	1,634	1,375

Note: Data are current as of 05/25/2010

<sup>a</sup> Active Business counts are based on the business number listed on the signout sheet of a logbook (this can be a business only or a combined business/guide license) and the submission of at least one log page from the logbook.

<sup>b</sup> Active Guide counts are based on the guide number written on each log page (this can be a guide only or a combined business/guide license) and the submission of at least one log page showing that guide license number.

<sup>c</sup> Region is based on the site code provided for the site fished on each logbook page.

<sup>d</sup> Total is not additive because a business or guide could operate in multiple regions. Includes businesses and guides that offered both saltwater and freshwater services.

## VESSELS

### Saltwater

The number of vessels registered to provide saltwater sport fishing charter services was 1,671 in 2006, 1,666 in 2007, 1,601 in 2008, and 1,444 in 2009 (Table 5). A vessel, though registered, is not considered “active” unless that vessel was used on one or more guided trip(s) as indicated by the submission of a logbook data page. Of the 1,671 saltwater vessels registered in 2006, 1,368 were active, of the 1,666 vessels registered in 2007, 1,409 were active, in 2008, of the 1,601 registered vessels, 1,353 were active, and in 2009, of the 1,444 saltwater vessels that were registered, 1,215 were active. Based on the primary port of operation indicated at registration and port of offloading, 747 saltwater vessels operated in Southeast and 622 operated in Southcentral in 2006. In 2007, 768 saltwater vessels operated in Southeast, and 641 operated in Southcentral. In 2008, 757 saltwater vessels operated in Southeast, 596 operated in Southcentral. In 2009, 669 saltwater vessels operated in Southeast and 547 operated in Southcentral (Table 5).

Logbook data indicate that vessels will target all possible species; bottomfish, salmon and both during the course of a fishing season (Table 6).

Table 5.–Number of registered and active saltwater vessels by region, 2006–2009.

Region	Registered Vessels <sup>a</sup>				Active Vessels <sup>b</sup>			
	2006	2007	2008	2009	2006	2007	2008	2009
SE	926	918	905	807	747	768	757	669
SC	745	748	697	637	622	641	596	547
Total <sup>c</sup>	1,671	1,666	1,601	1,444	1,368	1,409	1,353	1,215

Note: Data are current as of 05/25/10.

<sup>a</sup> Region is based on primary port of operation listed on the sign-out sheet

<sup>b</sup> Region is based on primary port of off loading, salmon and bottomfish statistical area.

<sup>c</sup> Total is not additive because vessels can operate in both regions.

Table 6.–Number of active saltwater vessels that made at least one trip in each target category, by region, 2006–2009.

Year	Region <sup>b</sup>	Target <sup>a</sup>			No Statistical Area Reported
		Salmon	Bottomfish	Both	
2006	SE	631	495	637	5
	SC	383	551	486	6
	Total	1,014	1,046	1,123	11
2007	SE	637	494	676	49
	SC	377	576	495	32
	Total	1,014	1,070	1,171	81
2008	SE	622	534	648	56
	SC	325	546	441	22
	Total	947	1,080	1,089	78
2009	SE	537	417	585	27
	SC	269	497	402	17
	Total	806	914	987	44

Note: Data are current as of 05/25/2010.

<sup>a</sup> Target is based on salmon and bottomfish statistical areas.

<sup>b</sup> Region is based on primary port of off loading, salmon and bottomfish statistical area.

## Freshwater

Based on the primary drainage and sites fished, many more freshwater vessels operate in Southcentral than in other regions between 2006 and 2009 (Table 7).

Table 7.–Number of registered freshwater vessels by year and region<sup>a</sup>, 2006–2009.

Year	SE	SC	AYK	Unknown <sup>b</sup>	Total <sup>c</sup>
2006	148	1,717	222	2	2,087
2007	131	1,669	240	2	2,041
2008	122	1,743	262	2	2,128
2009	97	1,642	236	3	1,977

Note: Data are current as of 06/08/2010.

<sup>a</sup> Region is based on primary drainage listed on the vessel registration sheet. If region could not be determined based on primary drainage, then the area fished was used.

<sup>b</sup> Insufficient information available during registration and on fishing activity.

<sup>c</sup> Total not additive because a vessel could be registered and operate in more than one region.

## TRIPS

### Saltwater

Logbook data indicate that 65,671 saltwater charter trips were conducted statewide in 2006, 67,152 trips were conducted in 2007, 62,006 trips were conducted in 2008, and 48,506 saltwater trips were conducted in 2009. During all four years, a majority of the trips that targeted salmon only, occurred in Southeast Alaska, whereas, the majority of trips that targeted bottomfish only, occurred in Southcentral Alaska. During the same four years, operators in Southeast conducted significantly more trips in which both salmon and bottomfish were targeted on the same trip. If a statistical area fished was not provided or indicated, no targeted species was assigned (Table 8).

Table 8.—Number of saltwater trips by targeted species by region, 2006–2009.

Year	Region <sup>b</sup>	Species Targeted <sup>a</sup>			No Statistical Area Reported	Total
		Salmon	Bottomfish	Both		
2006	SE	14,309	6,146	18,628	5	39,088
	SC	3,481	15,555	7,537	10	26,583
	Total	17,790	21,701	26,165	15	65,671
2007	SE	12,759	6,144	20,633	63	39,599
	SC	2,876	16,489	8,145	43	27,553
	Total	15,635	22,633	28,778	106	67,152
2008	SE	11,338	7,368	18,634	109	37,449
	SC	2,135	15,733	6,617	72	24,557
	Total	13,473	23,101	25,251	181	62,006
2009	SE	8,789	4,842	14,498	45	28,174
	SC	2,008	12,604	5,699	21	20,332
	Total	10,797	17,446	20,197	66	48,506

Note: Data are current as of 05/25/2010.

<sup>a</sup> Species targeted is based on the provision of salmon and/or bottomfish statistical areas.

<sup>b</sup> Region is based on the port of offloading, salmon and bottomfish statistical area.

### Freshwater

In 2006, 46,781 freshwater guided fishing trips were taken, 48,697 were taken in 2007, and 48,501 were taken in 2008. In 2009, 37,554 freshwater trips were conducted statewide, 84% of those trips took place in Southcentral, 10% in the Arctic-Yukon-Kuskokwim (AYK) area, and 6% in Southeast (Table 9).

Table 9.–Number of freshwater trips by region, 2006–2009.

Year	SE	SC	AYK	Total
2006	3,040	39,479	4,262	46,781
2007	3,241	40,558	4,898	48,697
2008	3,113	40,587	4,801	48,501
2009	2,400	31,305	3,849	37,554

*Note:* Data are current as of 05/26/2010.

<sup>a</sup> Region is based on the area code of the site code listed on each logbook page.

## LOGBOOK TRIP EFFORT AND HARVEST

Statewide saltwater charter trips decreased significantly in 2009 after an increase between 2006 and 2007, and a slight decrease in 2008 (Table 10). Saltwater angler days have decreased since 2007 with a large decline in 2009 (Table 10). For freshwater guided fishing statewide, the number of trips and angler days fished appeared to remain steady from 2006 to 2008 until 2009 when a notable decrease in freshwater trips and angler days occurred (Table 10).

### SALTWATER

In 2009, 80% of the saltwater logbooks that were issued were activated (effort or catch reported). From 2006 through 2009, the saltwater logbook collected information on client residency. Records show that in 2009, 90% of the angler days of effort in the saltwater charter salmon fishery were conducted by nonresident anglers, compared with 9% by residents and 1% by crew, comped anglers or those of unknown residency. Records also indicate that for 2009, 81% of the angler days of effort in the saltwater charter bottomfish fishery were conducted by nonresident anglers, 17% by residents and 2% by crew fishing, comped anglers or those of unknown residency (Tables 11-12).

In 2009 coho and king salmon made up 67% and 9% respectively of the harvest statewide, with the remaining 22% consisting of a combination of other salmon (Table 11).

Based on the number of angler days fished in 2009, 68% of the salmon participation took place in Southeast, and 32% in Southcentral. Within that same period, 42% of the bottomfish participation took place in Southeast, and 58% occurred in Southcentral (Table 12).

Of the bottomfish harvested in 2009, halibut were the most harvested species at 243,592 fish, consisting of 62% of the total bottomfish harvest statewide. Statewide, 22% of the halibut harvest occurred in Southeast and 78% occurred in Southcentral (Table 12). It should be noted that in Southeast, IPHC area 2C, anglers fishing from a charter vessel were limited to one halibut per day, whereas in Southcentral, IPHC area 3A, guided anglers were allowed two halibut per day in 2009.

### FRESHWATER

In 2009, 66% of the freshwater logbooks that were issued were activated. In 2009, 7% of the freshwater participation occurred in Southeast, 85% occurred in Southcentral, and 8% took place in the Alaska-Yukon-Kuskokwim (AYK) or interior Alaska (Table 13).



Angler days of effort in 2009 indicate that 88% of the anglers in the freshwater guided fishery were conducted by nonresident anglers, 10% were residents and 2% were crew fishing, comped anglers or those of unknown residency. In Southeast, 94% of the guided/chartered fishing was conducted by nonresident anglers, 87% were nonresidents in Southcentral, and 89% of the anglers in AYK were nonresidents.

In 2009, coho, sockeye and king salmon were the predominant salmon species, making up 47%, 34% and 15% respectively of the harvest statewide, with the remaining 4% consisting of a combination of other fish (Table 13).

Table 10.—Saltwater and freshwater trips and angler days by region, 2006–2009.

Year	Region	Saltwater <sup>a</sup>		Freshwater <sup>b</sup>	
		Trips	Angler Days	Trips	Angler Days
2006	SE	39,088	154,549	3,040	11,470
2006	SC	26,583	175,695	39,479	124,931
	AYK	0	0	4,262	11,006
	Total	65,671	330,244	46,781	147,407
2007	SE	39,599	158,551	3,241	11,610
2007	SC	27,553	163,964	40,558	126,448
	AYK	0	0	4,898	12,262
	Total	67,152	322,515	48,697	150,320
2008	SE	37,449	150,793	3,113	10,730
2008	SC	24,557	146,717	40,587	126,596
	AYK	0	0	4,801	11,833
	Total	62,006	297,510	48,501	149,159
2009	SE	28,174	110,285	2,400	8,066
2009	SC	20,332	119,611	31,305	94,387
	AYK	0	0	3,849	8,909
	Total	48,506	229,896	37,554	111,362

Note: Data are current as of 05/25/2010.

<sup>a</sup> Saltwater region is based on the port of offloading, salmon and bottomfish statistical area.

<sup>b</sup> Freshwater region is based on the area code of the site code listed on each logbook page.

Table 11.—Saltwater salmon effort and harvest by region and angler type, 2009.

Region <sup>a</sup>	Type of Angler	Angler Days <sup>b</sup>	King salmon					
			Large	Small	Coho	Sockeye	Pink	Chum
SE	Resident	1,722	642	12	2,717	13	492	94
	Nonresident	89,425	25,010	605	139,144	905	58,851	10,688
	Comped	193	75	0	200	0	45	12
	Crew	232	30	2	397	0	96	7
	Unknown	270	35	1	241	0	235	38
	Total	91,842	25,792	620	142,699	918	59,719	10,839
SC	Resident	10,573	772	87	17,751	103	546	65
	Nonresident	31,134	2,986	314	57,103	1,207	2,648	204
	Comped	370	22	3	516	7	14	8
	Crew	558	14	0	198	0	3	2
	Unknown	197	24	1	332	0	9	0
	Total	42,832	3,818	405	75,900	1,317	3,220	279
Total	Resident	12,295	1,414	99	20,468	116	1,038	159
	Nonresident	120,559	27,996	919	196,247	2,112	61,499	10,892
	Comped	563	97	3	716	7	59	20
	Crew	790	44	2	595	0	99	9
	Unknown	467	59	2	573	0	244	38
	Total	134,674	29,610	1,025	218,599	2,235	62,939	11,118

Note: Data are current as of 05/25/2010.

<sup>a</sup> Region is based on the port of offloading, salmon and bottomfish statistical area.

<sup>b</sup> Angler days totals all anglers who fished on a day when a salmon statistical area was entered, plus angler days where an angler harvested a salmon when a bottomfish statistical area was provided.

Table 12.—Saltwater bottomfish effort and harvest by region and angler type, 2009.

Region <sup>a</sup>	Type of Angler	Angler Days <sup>b</sup>	Halibut	LingCod	Rockfish			Shark
					Pelagic	Yelloweye	Non-Pelagic	
SE	Resident	1,566	1,123	249	720	255	275	1
	Nonresident	76,532	52,882	4,111	43,668	12,389	12,852	11
	Comped	260	200	34	219	45	35	0
	Crew	227	57	11	229	20	9	0
	Unknown	211	131	12	66	20	36	0
	Total	78,796	54,393	4,417	44,902	12,729	13,207	12
SC	Resident	30,322	52,211	3,870	12,994	2,511	790	26
	Nonresident	78,141	133,613	9,985	37,491	5,227	1,762	21
	Comped	940	1,448	86	475	91	31	4
	Crew	1,234	1,279	41	247	33	18	0
	Unknown	426	648	37	168	34	5	0
	Total	111,063	189,199	14,019	51,375	7,896	2,606	51
Total	Resident	31,888	53,334	4,119	13,714	2,766	1,065	27
	Nonresident	154,673	186,495	14,096	81,159	17,616	14,614	32
	Comped	1,200	1,648	120	694	136	66	4
	Crew	1,461	1,336	52	476	53	27	0
	Unknown	637	779	49	234	54	41	0
	Total	189,859	243,592	18,436	96,277	20,625	15,813	63

Note: Data are current as of 05/25/2010.

<sup>a</sup> Region is based on the port of offloading, bottomfish and salmon statistical area.

<sup>b</sup> Angler days totals all anglers who fished on a day when a bottomfish statistical area was entered, plus angler days where an angler harvested a bottomfish when a salmon statistical area was provided.

Table 13.–Freshwater effort and harvest by species, region and angler type, 2009.

Region <sup>a</sup>	Type of Angler	Angler Days	King	Coho	Sockeye	Cutthroat	Rainbow	Steelhead	Lake Trout	Grayling	Dolly Varden	Pike	Sheefish
SE	Resident	165	2	115	6	6	0	2	0	0	2	0	0
	Nonresident	7,612	35	5,731	1,072	11	3	2	0	0	295	0	0
	Comped	18	3	0	4	0	0	0	0	0	0	0	0
	Crew	234	3	219	38	2	0	0	0	0	4	0	0
	Unknown	37	0	9	3	0	0	0	0	0	0	0	0
	Total	8,066	43	6,074	1,123	19	3	4	0	0	301	0	0
SC	Resident	10,420	1,854	3,431	2,161	0	53	1	1	27	69	21	0
	Nonresident	82,097	11,343	31,936	27,221	1	350	9	111	112	1,318	194	0
	Comped	230	24	45	49	0	0	0	0	0	12	0	0
	Crew	1,204	28	541	343	0	2	0	2	5	39	0	0
	Unknown	436	39	167	132	0	0	0	0	33	27	0	0
	Total	94,387	13,288	36,120	29,906	1	405	10	114	177	1,465	215	0
AYK	Resident	646	173	49	222	0	27	0	6	7	58	47	1
	Nonresident	7,976	781	2,393	569	0	244	0	0	93	529	51	34
	Comped	18	2	0	5	0	0	0	0	0	0	0	0
	Crew	247	1	6	52	0	83	0	0	5	17	0	0
	Unknown	22	3	0	1	0	0	0	0	2	30	0	0
	Total	8,909	960	2,448	849	0	354	0	6	107	634	98	35
Total	Resident	11,231	2,029	3,595	2,389	6	80	3	7	34	129	68	1
	Nonresident	97,685	12,159	40,060	28,862	12	597	11	111	205	2,142	245	34
	Comped	266	29	45	58	0	0	0	0	0	12	0	0
	Crew	1,685	32	766	433	2	85	0	2	10	60	0	0
	Unknown	495	42	176	136	0	0	0	0	35	57	0	0
	Total	111,362	14,291	44,642	31,878	20	762	14	120	284	2,400	313	35

Note: Data are current as of 05/26/10.

<sup>a</sup> Region is based on the area code of the site code listed on each logbook page.

## **DISCUSSION**

### **GUIDE AND BUSINESS LICENSING**

The 2006 through 2009 ADF&G guide and business licensing process differed from the registration process prior to 2005 in terms of the approach used, fees, and the information collected on license applications. The current licensing approach reflects changes made in 2005 to initiate the new minimum requirements established by HB 452. Guides and businesses offering guided fishing services are now held to a higher standard of compliance than previous to 2005. Violations of the guide licensing statutes or regulations adopted under HB 452 are either violations or misdemeanors, and courts are authorized to revoke the license of the guide or business under certain conditions, such as repeated convictions within a three-year period.

ADF&G no longer collects the information collected in earlier years on the type (saltwater vs. freshwater) and location (regions/subareas) of services. The 2006-2009 licensing processes have been similar and provide a basis for establishing a long-term database of licensed businesses and guides. Charter/guide business and guide licensing still reflects the intent to operate, while actual activity is confirmed by the submission of logbook trip data.

### **LOGBOOKS**

ADF&G initiated a mandatory saltwater charter logbook program in 1998. The BOF adopted regulations requiring annual registration of sport fishing guides and businesses, and logbook reporting. The logbook and registration/licensing program was intended to provide information on actual participation and harvest by individual vessels and businesses.

Recent emphasis from ADF&G management staff and NPFMC on more timely saltwater data spurred discussions on how to hasten logbook data availability. Currently, logbook data entry involves collecting logbook sheets from the guide, entering the logbook data into a logbook database, and editing the data. This process can take RTS from six to eight weeks. Discussions included the possibility of an electronic submission option that would provide data to ADF&G and NPFMC staff in a more timely manner. Any option for a logbook change would have to include a design that is appealing and easy for the guide industry to use, such that they would perceive it as beneficial to a process that they already consider “burdensome.” Electronic reporting options were, at first, appealing to fulfill both management needs and halibut management needs for more timely information. Further discussions concluded that electronic reporting would still necessitate the use of a paper version of the logbook due to enforcement and trip recording requirements. Data would still need to be verified for errors, be entered accurately into a database, and be available for onsite inspection. There are currently no options for going “paperless”, and no perceived benefit to managers or the industry that would result from the process. The “paperless” approach would require a change in regulation for reporting requirements along with extensive research into the cost of electronic reporting. The discussion for going “paperless” will continue however.

Upon further discussion and research, an alternative approach was considered. ADF&G programmers researched the option of developing a system that would electronically scan the image of a redesigned logbook data page. Scanned images would minimize data entry time but allow for data entry personnel to fix images flagged as unrecognizable, thus maintaining data accuracy and quality. This option is not any more “burdensome” to the industry and would

likely make the weekly reporting requirement more palatable knowing that the data would be more immediately available.

In 2010, a test of the redesigned saltwater logbooks will be conducted to test the new scannable saltwater logbook data page and scanning software. Upon review of the 2010 data pages and likely adjustments to the design, it is hoped that this new design will be fully implemented by 2011.

Preliminary results from verification studies comparing the accuracy of logbook harvest data with the statewide harvest survey estimates, and onsite creel programs are favorable. Logbook data will continue to be compared to counts from those two programs. Comparisons are ongoing and are part of a more comprehensive evaluation of logbook data quality. Logbook halibut data has been used extensively. Saltwater and freshwater logbook data have also been used for a variety of regulatory analyses for state managed species.

## **ACKNOWLEDGEMENTS**

Southeast and Southcentral regional and area staff, especially numerous front counter personnel, have been critical to the success of the ADF&G sport fishing guide and business licensing and logbook program. The above staff along with Rob Bentz, Bob Chadwick and Mike Jaenicke from Southeast, Scott Meyer, Matt Miller and Tom Vania from Southcentral, and Tom Taube from Fairbanks have also provided valuable comments during the process of licensing and logbook form design.

Doug Vincent-Lang has provided valuable insight on the history of the program and facilitated numerous discussions with NOAA and IPHC. Bob Clark's thoughtful insight and direction has been very much appreciated. We also acknowledge the expertise and infinite patience exhibited by Joanne MacClellan in preparing this report. Her knowledge and willingness to assist is invaluable.

Kirk Brogdon of the division's Research and Technical Services section deserves considerable credit for designing and implementing efficient information management systems for data capture, cleaning, storage, and reporting.

Kathy Kush should be acknowledged for her incredible skills in streamlining the licensing process and making sure that all license applications are processed in a timely manner that has allowed the guides and businesses to start operation without delay.

Margaret Nussbaum, Diane Novinska, Raili Kedzior, and Andrea Hamby deserve credit for receiving, entering, and filing the licensing and logbooks forms. With their perseverance, we met reporting deadlines that seemed nearly impossible with available staffing and workloads.

We also acknowledge the cooperation of the thousands of sport fishing guides and sport fishing businesses that licensed and completed their logbooks in a timely and compliant manner.

## REFERENCES CITED

- Chapell, R. S. In prep. Escapement, terminal harvest, and juvenile tagging of Chilkat River Chinook salmon, 2008. Alaska Department of Fish and Game, Fishery Data Series, Anchorage.
- Dean, M. R. 2001. Alaska Department of Fish and Game sportfishing guide and business registration and saltwater sportfishing charter vessel logbook program, 1999. Alaska Department of Fish and Game, Special Publication No. 01-1, Anchorage. <http://www.sf.adfg.state.ak.us/FedAidPDFs/sp01-01.pdf>
- Dean, M. R., and A. L. Howe. 1999. Alaska Department of Fish and Game sportfishing guide and business registration and saltwater sportfishing charter vessel logbook program, 1998. Alaska Department of Fish and Game, Special Publication No. 99-1, Anchorage. <http://www.sf.adfg.state.ak.us/FedAidPDFs/sp99-01.pdf>
- Jennings, G. B., K. Sundet, and A. E. Bingham. 2010. Estimates of participation, catch, and harvest in Alaska sport fisheries during 2008. Alaska Department of Fish and Game, Fishery Data Series No. 10-22, Anchorage. <http://www.sf.adfg.state.ak.us/FedAidpdfs/FDS10-22.pdf>
- Meyer, S., and B. Powers. *Unpublished*. Evaluation of Alaska Charter Logbook data for 2006-2008, a report to the North Pacific Fishery Management Council, October 2009. Alaska Department of Fish and Game, Division of Sport Fish, Anchorage. [http://www.fakr.noaa.gov/npfmc/current\\_issues/halibut\\_issues/logbookeval909.pdf](http://www.fakr.noaa.gov/npfmc/current_issues/halibut_issues/logbookeval909.pdf)
- Sigurdsson, D., and B. Powers. 2009. Participation, effort, and harvest in the sport fish business/guide licensing and logbook reporting programs, 2006-2008. Alaska Department of Fish and Game, Special Publication No. 09-11, Anchorage. <http://www.sf.adfg.state.ak.us/FedAidPDFs/SP09-11.pdf>
- Wendt, K. L., and M. J. Jaenicke. *In prep*. Harvest estimates for selected marine sport fisheries in Southeast Alaska during 2008. Alaska Department of Fish and Game, Fishery Data Series, Anchorage.

**APPENDIX A  
SPORT FISH BUSINESS OWNER/GUIDE LICENSE  
APPLICATION**



# 2009 SPORT FISH BUSINESS OWNER/ GUIDE LICENSE APPLICATION

Alaska Department of Fish and Game / Division of Sport Fish - RTS  
333 Raspberry Road, Anchorage, Alaska 99518-1565  
Telephone: (907) 267-2369 or (907) 267-2390

<http://www.sf.adfg.state.ak.us/statewide/Guides/guide.cfm>

License #

This TEMPORARY LICENSE is good for 21 business days from date signed by Dept. Representative

<b>FEE CHECK</b> ONE: <input type="checkbox"/> \$50.00 Guide Only License <input type="checkbox"/> \$100.00 Business Only License <input type="checkbox"/> \$100.00 Combined Business/Guide License* <i>*An agent for this business cannot apply as a guide on a combination license</i> <b>All fees are nonrefundable</b>	<b>METHOD OF PAYMENT:</b> <input type="checkbox"/> Check #: _____ (Make checks payable to <u>State of Alaska</u> ) <input type="checkbox"/> Money Order #: _____ <input type="checkbox"/> Cash (Anchorage, Juneau, Fairbanks offices <u>ONLY</u> ) <input type="checkbox"/> Credit Card (Anchorage, Juneau, Fairbanks offices <u>ONLY</u> or Internet)	<i>APPLICATION MUST BE STAMPED BY ADF&amp;G TO BE VALID</i>
<input type="checkbox"/> \$50.00 Guide Only Upgrade to Combination Business/Guide License		

**SEE REVERSE FOR INSTRUCTIONS**

**SECTION A. ALL APPLICANTS COMPLETE THIS SECTION**

Name of Business Owner or Guide: \_\_\_\_\_  
Last First MI

Permanent Mailing Address : \_\_\_\_\_  
PO Box or Street Address City State Zip

Telephone Number: (\_\_\_\_) \_\_\_\_\_ In-season Telephone Number: (\_\_\_\_) \_\_\_\_\_

Mail License Here (if different): \_\_\_\_\_  
PO Box or Street Address City State Zip

**SECTION B. TO BE FILLED OUT BY THE BUSINESS OWNER OR THEIR AGENT**

**BUSINESS INFORMATION:**  
 Name of Business: \_\_\_\_\_  
 Name of Business Owner: \_\_\_\_\_  
 Alaska Div. of Occupational Business License Number: \_\_\_\_\_ Expiration Date: Mo/Date/Yr

**INSURANCE:** See detailed insurance requirements on back.  
 Name of Insurance Company: \_\_\_\_\_  
 Policy/Binder #: \_\_\_\_\_ Effective Dates: From: \_\_\_\_\_ To: \_\_\_\_\_  
*\*Remember to get a logbook for your business at the nearest ADF&G office prior to commencement of guiding activities.\**

**SECTION C. TO BE FILLED OUT BY THE GUIDE OR THEIR AGENT**

Are you a citizen of the United States, Canada, Mexico or a resident alien? Yes  No

Current First Aid card: Certifying agency: \_\_\_\_\_ Exp. Date: Mo/Yr

2009 Alaska Sport Fishing License # (not your Guide License #): \_\_\_\_\_

**U.S. COAST GUARD OPERATOR'S LICENSE:** (See explanation on back)

Do you plan to operate a motorized vessel in Navigable Waters? Yes  No  **If yes, complete the next line.**

U. S. Coast Guard Operator's License #: \_\_\_\_\_ Exp. Date: Mo/Date/Yr DOB: Mo/Date/Yr

**SIGNATURE OF BUSINESS OWNER/AGENT or GUIDE:**  
 I hereby certify that all information is true and correct and that I understand this information is subject to public disclosure. (NOTE: Making a false statement or omitting a material fact, is subject to a maximum penalty of \$10,000 or 1 year imprisonment, or both, per AS 11.56.210.)

\_\_\_\_\_ Circle one: Applicant or Agent Date: \_\_\_\_\_

This temporary license must be signed and stamped by an ADF&G employee and in your possession before guiding activities begin.

Name of ADF&G Representative (print): \_\_\_\_\_ Place of Issue: \_\_\_\_\_  
 Signature: \_\_\_\_\_ Date: \_\_\_\_\_

YELLOW COPY TO APPLICANT





# INSTRUCTIONS FOR THE 2009 SPORT FISH BUSINESS OWNER/ GUIDE LICENSE APPLICATION

**Attention:** *The following will apply without exception:*

1. All applicable sections of the license application must be complete and legible prior to ADF&G validation. No "pending", "unknowns," or blanks will be accepted.
2. Incomplete license applications will be returned, resulting in a processing delay.
3. A signature is required.
4. This is a license application only. A permanent license will be mailed within 21 business days.
5. There may be requirements by other state and federal agencies to operate as a guide in Alaska.

## INSTRUCTIONS:

**SECTION A:** ALL applicants must complete this section.

**SECTION B: BUSINESS OWNER OR THEIR AGENT** - Complete this section if you are the owner/agent of the sport fishing business. This section should be filled out even if the owner does not intend to personally guide clients. An agent for this business **CANNOT** apply as a guide on the same application. A separate license application must be submitted.

**LIABILITY INSURANCE REQUIREMENT:** General liability or marine protection that covers at least \$100,000 for each incident and \$300,000 for all incidents in a year. Insurance must cover **ALL** periods of time when the owner or owner's employees are providing sport fishing services to clients. Insurance must be current, **NOT** pending.

### **IMPORTANT NOTICE TO BUSINESS OWNERS**

State regulation (5 AAC 75.075) requires that all operators providing sport fishing guide services in Alaska must apply annually for a license with the Department of Fish and Game **before** guiding services begin. Business owners are required to register all charter vessels with ADF&G and acquire a logbook prior to commencement of guiding activities. **Guides hired by an operator must keep a copy of the ADF&G business license in their possession while guiding.**

**SECTION C: GUIDES** - Complete this section if you intend to guide for a sport fish operation owned by someone other than you or if you are the business owner who also intends to guide (owner/operator).

**U.S. COAST GUARD OPERATOR'S LICENSE:** A licensed sport fish guide **must** have, at minimum, an OUPV or 6-pak U.S.C.G. operator's license in their possession while operating a motorized vessel with clients or transporting clients on a motorized vessel in navigable waters. Navigable waters are determined by the U.S. Coast Guard (907) 271-6736. Applicant must provide the U.S.C.G. license number, expiration date and date of birth (DOB).

### **IMPORTANT NOTICE TO GUIDES**

State regulation (5 AAC 75.075) requires that all licensed guides providing sport fishing guide services in Alaska must apply annually for a license with the Department of Fish and Game **before** guiding activities begin.

### **WHAT A GUIDE MUST HAVE IN POSSESSION WHILE GUIDING**

A sport fish business owner or guide should be able to present all documents required for licensing upon request by a representative of the department of fish and game, or any peace officer of the state. While engaged in providing sport fishing guide services, a sport fishing guide shall have the following readily available for inspection:

- A current sport fishing guide license;
- A copy of the current ADF&G sport fishing business license of the guide's employer;
- A current Alaska sport fishing license, tags, stamps or permits that are required to engage in the sport fishery for which the guide services are providing;
- An identification card issued to the sport fishing guide by a state or federal agency that bears a photo of the sport fishing guide.



**APPENDIX B**  
**SALTWATER LOGBOOK FORM**



# State of Alaska Department of Fish & Game Division of Sport Fish

## 2009 Saltwater Charter Logbook and Vessel Registration

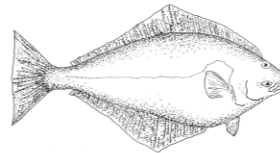
*Vessel  
Name:*

(THIS LOGBOOK MUST REMAIN WITH THIS VESSEL)

**AND**

*Vessel AK. #:  
or  
U.S.C.G. #:*

Please follow the INSTRUCTIONS carefully as they have changed.



### **LOGBOOK INSPECTION**

Upon request from any representative of the Department or any peace officer of the state, a person is required to present this *Alaska Department of Fish and Game Saltwater Sportfishing Charter Vessel Logbook* for inspection.

Appendix B1.-Saltwater charter logbook form, 2009.

-continued-



ALASKA DEPARTMENT OF FISH & GAME 2009 SALTWATER SPORT FISHING CHARTER TRIP LOGBOOK PAGE. LOGBOOK NO:  
 DIVISION OF SPORT FISH - RTS, 333 RASPBERRY RD., ANCHORAGE, ALASKA 99518-1565. QUESTIONS: CALL (907) 267-2369.

29

**COMPLETE THIS SECTION FOR EVERY TRIP**

2009 FISH & GAME BUSINESS OWNER LICENSE #: \_\_\_\_\_  
 (License # assigned to you by ADF&G)

2009 FISH & GAME GUIDE LICENSE #: \_\_\_\_\_  
 (License # assigned to you by ADF&G)

**TRIP INFORMATION**

DATE FISHED: MO: \_\_\_\_\_ DAY: \_\_\_\_\_, 2009.

PORT OR COMMUNITY WHERE FISHING TRIP BEGAN: \_\_\_\_\_  
 (Port or Community where clients were loaded and trip began)

PORT OR COMMUNITY OF OFF-LOADING: \_\_\_\_\_  
 (Port or Community where fish or clients were off-loaded from vessel)

**PRIMARY STATAREA & BOATHOURS:**

Targeted Species	Primary Stat. Area where most fish were caught. (6-digit Code)	No. of Boat Hours Fished this Trip
Salmon		
Bottomfish		

**COMPLETE THE FOLLOWING FOR ALL TRIPS**

Circle the IPHC Area Fished if HALIBUT were Kept during this trip: 2C 3A 3B or 4  
 (Circle Only One)

If HALIBUT were kept in more than one IPHC area during this trip, a separate logbook data sheet must be used for each IPHC area fished.

PAGE NO. \_\_\_\_\_ OF \_\_\_\_\_ (TOTAL NO. OF PAGES FOR THIS TRIP).

**INSTRUCTIONS: Complete one row below for each angler who fished on this trip.**

Sport Fishing License Number, Printed Name AND Residency of each angler that fished (R = Resident : N = Nonresident) <b>AND</b> Record those anglers under 16 by Birthdate (e.g., 8/28/1998) and First & Last Name. (# applicable)		Circle next to each license if angler is "Comped" or Crew		Number of King Salmon				Number of Other Salmon				Number of Halibut		Number of Lingcod		Number of Pelagic Rockfish (black bass, etc.)		Number of Yelloweye Rockfish		Number of Nonpelagic Rockfish (not including Yelloweye)		Number of Salmon Shark	All Other Fish (optional)
		28" and Larger	"Shakers" Less Than 28"	Coho	Sockeye	Pink	Chum	Kept	Rele	Kept	Rele	Kept	Rele	Kept	Rele	Kept	Rele	Kept	Rele	Kept	Rele	Kept	
		Kept	Rele	Kept	Rele	Kept	Rele	Kept	Rele	Kept	Rele	Kept	Rele	Kept	Rele	Kept	Rele	Kept	Rele	Kept	Rele	Kept	
		(Circle R or N)		<b>SALMON</b>								<b>BOTTOMFISH</b>											
1.	LICENSE NUMBER	R	N	X	C																		
ANGLER NAME																							
2.	LICENSE NUMBER	R	N	X	C																		
ANGLER NAME																							
3.	LICENSE NUMBER	R	N	X	C																		
ANGLER NAME																							
4.	LICENSE NUMBER	R	N	X	C																		
ANGLER NAME																							
5.	LICENSE NUMBER	R	N	X	C																		
ANGLER NAME																							
6.	LICENSE NUMBER	R	N	X	C																		
ANGLER NAME																							
7.	LICENSE NUMBER	R	N	X	C																		
ANGLER NAME																							
8.	LICENSE NUMBER	R	N	X	C																		
ANGLER NAME																							

**CERTIFICATION:** I certify that the information contained in this document is true and correct to the best of my knowledge.  GUIDE SIGNATURE

CONTINUE ON NEXT PAGE IF MORE THAN 8 ANGLERS. CHECK IF TRIP INFORMATION IS CONTINUED ON NEXT PAGE:



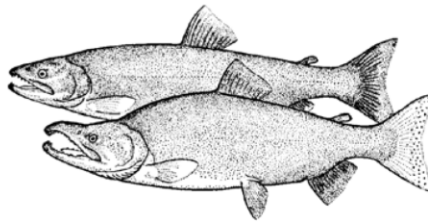
**APPENDIX C**  
**FRESHWATER LOGBOOK FORMS**

# 2009 Freshwater Sport Fish Guide Logbook and Vessel Registration

LOGBOOK NO.

BUSINESS NAME

ADF&G BUSINESS OWNER'S LICENSE NO.



*Please follow the instructions carefully  
as they have changed.*



**State of Alaska Department of Fish & Game  
Division of Sport Fish**

## **LOGBOOK INSPECTION**

*Upon request from any representative  
of the Department or any peace officer of the state,  
a person is required to present this Alaska Department  
of Fish and Game Freshwater Sport Fishing  
Guide Logbook for inspection.*

Appendix C1.—Freshwater guide logbook from, 2009.

-continued-





Alaska Department of Fish & Game  
**2009 Freshwater Sport Fish Trip Logbook**  
 RETURN TO: 333 RASPBERRY ROAD, ANCHORAGE, AK 99518-1565 • QUESTIONS: (907) 267-2369

LOGBOOK NO. \_\_\_\_\_

TRIP INFORMATION	Sport Fish License Number of each Client, Nonpaying angler, and Crew <b>THAT FISHED</b> AND Record all those anglers under 16 as "Youth Angler" (YA1, YA2etc.)					Circle next to each License if Resident, Nonresident, X for "Comped" or C for Crew		SALMON					TROUT			OTHER				
	ADF&G GUIDE LICENSE #:	DATE FISHED: _____, 2009 (Month) (Day)	R	N	X	C	K	R	KEPT	RELEASED	KEPT	RELEASED	KEPT	RELEASED	KEPT	RELEASED	KEPT	RELEASED	KEPT	RELEASED
									KING	COHO	SOCKEYE	CUTTTHROAT	RAINBOW	STEELHEAD	LAKE TROUT	DOLLY VARDEN	ARCTIC GRAYLING	NORTHERN PIKE	SHEEFISH	*
RIVER / STREAM / LAKE (SPECIFY)																				
SITE CODE (REFER TO SITE CODE LIST)																				
PAGE NO. _____ OF _____																				
TOTAL NO OF PAGES FOR THIS TRIP ↑																				
* WRITE IN OTHER SPECIES HERE																				

CERTIFICATION: I certify that the information contained in this document is true and correct to the best of my knowledge.

X

GUIDE SIGNATURE

CONTINUE ON NEXT PAGE IF MORE THAN 6 ANGLERS.  
 RETURN WHITE COPY TO ADF&G



**APPENDIX D**  
**VESSEL REGISTRATION FORMS, DECALS AND TAGS**



State of Alaska, Department of Fish & Game  
 Division of Sport Fish - RTS  
 333 Raspberry Rd.  
 Anchorage, AK 99518-1565

## ADF&G REPRESENTATIVE:

DO NOT ISSUE A LOGBOOK UNLESS THE APPLICANT HAS THE FOLLOWING:

- ⇨ 2009 ADF&G Sport Fish Business License
- ⇨ Current AK Vessel Number issued by DMV or Current U.S.C.G. Vessel Documentation No.

NONE OF THE ABOVE CAN BE "PENDING"

A logbook issued without the above items will result in a processing delay and a return of the sign-out sheet to the issuing office for your completion and follow-up. Subsequent data sheets will NOT be processed until the information is complete.

2009 ADF&G Sport Fish Business Owner and Guide License applications are available at all ADF&G offices or online at:

<http://www.admin.adfg.state.ak.us/license/>

AK Vessel Registration information is available from Alaska Div. of Motor Vehicles at (907) 269-5551 or online at:

<http://www.alaska.gov/local/akpages/ADMIN/dmv/reg/boat.htm>

Effective in 2005: All powered and nonpowered sport fish guide vessels MUST be registered with DMV and ADF&G.

## 2009 Saltwater Sport Fish Charter Logbook Sign-Out AND Vessel Registration

*Must be completed*

INSTRUCTIONS TO ADF&G REPRESENTATIVE: Please forward the white copy of this form to **Sport Fish Research & Technical Services, 333 Raspberry Rd., Anchorage, AK 99518-1565**. ADF&G area offices should keep the pink copy.

### SPORT FISH BUSINESS INFORMATION:

Name of Sport Fishing Business: \_\_\_\_\_

Sport Fish Business Owner License Number (avail. from ADF&G): 09- \_\_\_\_\_  
*(A logbook WILL NOT be issued without a current ADF&G Business License Number)*

### SPORT FISHING CHARTER VESSEL REGISTRATION:

⇨ DMV issued AK No. or Vessel U.S.C.G. Documentation No. (*REQUIRED*): \_\_\_\_\_  
*(A logbook WILL NOT be issued without a current AK or U.S.C.G. number)*

⇨ Vessel Name: \_\_\_\_\_ *(Vessel name and AK No. or U.S.C.G # must appear on the cover)*

⇨ Primary Alaska port from which this vessel will operate during 2009: \_\_\_\_\_

#### DEPARTMENT USE ONLY

⇨ Did you issue a Stat. Area Map? YES  NO  If No, Explain: \_\_\_\_\_

⇨ ADF&G Representative: (*print*) \_\_\_\_\_

⇨ Area Office: \_\_\_\_\_ Date of Issue: \_\_\_\_\_

2009 FRESHWATER SPORT FISH GUIDE

# Vessel Registration

NOTE TO ADF&G REPRESENTATIVE

Confirm that the vessel information requested on the bottom of this page is complete. Every vessel that this business is intending to operate while providing sport fishing guided services, must be recorded.

**Attach the white (top) copy of this page to the sign-out sheet, whether or not there are registered vessels. Mail the sign-out sheet and the vessel registration page to the Anchorage ADF&G RTS office at 333 Raspberry Rd., Anchorage, AK 99518-1565.**

REGISTERING YOUR VESSEL(S)

For each vessel you plan to use to conduct sport fishing guided activities, please fill out the information below.

If a vessel is newly purchased, leased or borrowed at anytime during the guiding season, it must have a current AK vessel registration number **or** a U.S.C.G. documentation number. If a vessel is added during the season, call the local ADF&G office or (907) 267-2369.

For purposes of vessel registration, vessels are defined as: **rafts, canoes, kayaks, motorized and nonmotorized water vehicles.**

**Registration Exemption:** Personal Float Tubes.

**MULTIPLE LOGBOOKS?**

Note logbook number where vessel information has been provided:

VESSEL REGISTRATION NO. (AK) OR U.S.C.G. VESSEL DOC. NO.	PRIMARY AK DRAINAGE/COMMUNITY THE VESSEL WILL OPERATE OUT OF IN 2009

Continue on another sheet if you have more vessels. Transfer the business name and logbook number onto that extra sheet.



Appendix D3.—Vessel decal, 2009.



Appendix D4.—Vessel tab, 2009.

**APPENDIX E**  
**ADF&G COMMISSIONER STATEMENT**



## Conceptual Strategies for Assuring the Accuracy of Reporting of Pacific Halibut Harvest for the 2006 ADF&G Saltwater Charter Logbook



The Alaska Department of Fish and Game is going to reinstate the reporting of Pacific halibut harvest in the Saltwater Charter Logbook program for 2006. The following conceptual ideas are currently being considered as implementation strategies to address the need for accurate reporting of the harvest of Pacific halibut by saltwater charters:

- Reporting of kept and released for Pacific halibut will be at the level of the individual chartered client (angler).
- Unique identification information for each client will be required and will be reported with the associated kept and released information for each fish species. One of the following identifiers will be used to identify each client and their trip characteristics: (1) ADF&G Sport Fishing License number; (2) Permanent Identification Card number; (3) Disabled Veterans License number; or (4) name for underage anglers (or possibly identified by accompanying adult's license number). Collecting this information will enable cross-verification (charter operator versus client) of logbook information (see next bullet).
- Off-site (cross-) verification will involve follow-up mail surveys of chartered anglers, using the identifying information provided in the logbook reports, combined with the ADF&G license databases.
- Mandatory recording of all information for each chartered trip before clients and harvest are offloaded at the end of the trip.
- Reporting (i.e., turning in charter logbook sheets) will occur on a weekly basis. Weekly reporting will enable timely feedback to charter operators regarding possible reporting errors and omissions, so for example incomplete and missing data in logbooks (e.g., statistical areas missing digits, port of landing missing, no effort information recorded, etc.) can then be addressed in a timely and accurate manner.
- Dock-side creel surveys will provide verification of the number of clients and numbers of Pacific halibut kept will occur for a random subsample of locations and charter trips for a yet-to-be determined portion of saltwater charter trips in Southeast and Southcentral Alaska. Verification will involve direct counting of clients upon offloading, and direct observation and counting of harvested halibut.
- Stricter penalties for logbook violations were implemented in 2004 when the legislature passed guide licensing and reporting provisions.

As noted above these ideas are conceptual in nature, and specific implementation details are under development and subject to change.

---

Appendix E1.–December 2005 ADF&G commissioner statement detailing strategies for reporting of Pacific halibut harvest for the saltwater charter logbook.



**APPENDIX F**  
**SALTWATER EDITING RESULTS**

Appendix F1.–Saltwater editing results, 2009.

Edit	Number Occurrences
No guide license number	3
Invalid guide license number	1
Missing date	0
Invalid date (not in correct year)	0
Invalid port of offloading	2
Invalid port of origin	11
Missing salmon statistical area	21
Missing bottomfish statistical area	17
Invalid salmon statistical area	9
Invalid bottomfish statistical area	11
Salmon harvest no salmon statistical area	923
Bottomfish harvest no bottomfish statistical area	785
Salmon statistical area listed, no hours listed	822
Bottomfish statistical area listed, no hours listed	1,171
No statistical area listed	66
No hours listed	4
Possible invalid salmon statistical area	0
Possible invalid bottomfish statistical area	0
Log pages turned in late <sup>a</sup>	4,796
Log book wasn't checked out to a business	0
Salmon or bottomfish hours are greater than 12	67
Duplicate log pages	0
Trip records without angler records	0
Date fished greater than date received by ADF&G	55
<b>Trips</b>	<b>48,506</b>

<sup>a</sup> Allows a 7 day grace period

**APPENDIX G**  
**FRESHWATER EDITING RESULTS**

Appendix G1.–Freshwater editing results, 2009.

Edit	Number Occurrences
No guide license number	221
Invalid guide license number	5
Missing date	0
Invalid date (not in correct year)	0
Missing site code	4
Invalid site code	0
No paying clients	0
Log pages turned in late <sup>a</sup>	6,559
Duplicate log pages	0
Date fished greater than date received by ADF&G	208
Log book wasn't checked out to a business	0
Kenai River trips on Sunday or Monday	99
Trip records without angler records	0
<b>Trips</b>	<b>37,554</b>

<sup>a</sup> Allows a 7 day grace period

**APPENDIX H**  
**SALTWATER LOGBOOK SUMMARIES BY AREA AND**  
**PORT OF OFFLOADING**

Appendix H1.—Saltwater logbook salmon participation, effort, kept and released by area and port of offloading, Southeast Alaska, 2009.

Area	Port of Offloading	Businesses <sup>a</sup>	Vessels <sup>a</sup>	Trips	Angler Days	King salmon ≥ 28"		King salmon < 28"		Coho Kept	Sockeye Kept	Pink Kept	Chum Kept
						Kept	Released	Kept	Released				
A	Clover Pass	5	5	117	441	99	1	0	82	1,507	8	1,033	125
A	Ketchikan	68	92	4,364	17,283	1,715	117	316	2,806	16,904	170	19,222	1,290
A	Knudson Cove	18	21	1,058	4,376	310	41	11	885	3,739	35	5,926	790
A	Other	11	31	918	2,505	441	114	43	792	4,843	42	3,194	999
B	Coffman Cove	7	9	154	568	16	6	8	62	1,244	0	89	5
B	Craig	31	58	1,413	4,698	1,073	75	14	190	15,602	18	1,596	265
B	Klawock	10	21	501	1,517	259	24	3	40	5,244	11	760	156
B	Point Baker	5	6	120	416	3	3	0	3	305	2	436	5
B	Thorne Bay	6	9	194	695	40	7	0	179	1,388	2	198	64
B	Whale Pass	7	10	89	271	15	6	0	153	363	1	21	2
B	Other	25	71	2,904	11,261	2,597	160	19	593	28,449	41	5,312	581
C	Petersburg	31	36	715	2,761	191	6	5	35	1,217	24	690	62
C	Wrangell	11	10	145	570	60	3	3	80	281	1	37	15
C	Other	6	11	217	786	20	0	0	3	598	1	293	18
D	Crescent Harbor	5	7	100	376	272	9	0	4	504	0	78	32
D	Port Alexander	4	5	113	392	57	5	0	5	295	95	128	3
D	Sealing Cove	4	6	50	193	138	6	0	7	309	0	33	14
D	Sitka	106	167	6,930	27,465	14,636	3,757	66	1,006	42,772	175	4,553	1,699
D	Other	12	25	529	1,659	364	37	2	35	1,435	64	924	243
E	Angoon	7	12	168	563	112	16	12	111	328	1	367	41
E	Auke Bay	32	41	1,827	7,792	526	64	44	408	2,989	73	2,186	2,257
E	Juneau	28	40	513	1,836	80	17	6	51	366	4	442	185
E	Other	8	22	708	2,729	347	24	6	124	1,510	14	1,465	517
F1	Skagway	7	8	368	1,276	193	122	1	1,058	1	0	42	3
G	Bartlett Cove	7	19	131	515	13	4	0	5	45	0	47	8
G	Elfin Cove	10	23	1,016	3,904	853	101	6	116	4,207	32	1,417	112
G	Gustavus	17	34	1,265	4,997	616	64	17	64	2,302	58	2,582	269
G	Hoonah	16	17	491	2,298	61	37	7	59	255	5	230	84
G	Pelican	4	5	134	429	191	78	9	14	683	0	39	23
G	Other	6	7	185	2,777	64	2	0	3	1,862	31	6,326	967
H	Yakutat	7	10	585	2,404	388	62	22	46	1,146	10	31	5
	Other Southeast	4	4	152	532	42	1	0	153	6	0	22	0
	Total Southeast	387	669	28,174	110,285	25,792	4,969	620	9,172	142,699	918	59,719	10,839

Note: Participation (number of businesses, vessels, trips and angler days) was determined by number of trips, not targeted species. Responses with less than 4 businesses are not reported separately, to protect confidentiality of respondents. Data are current as of 05/25/2010.

<sup>a</sup> Business and vessel regional and total counts are not additive as they can offload at multiple ports.

Appendix H2.—Saltwater logbook salmon participation, effort, kept and released by area and port of offloading, Southcentral Alaska, 2009.

Area	Port of Offloading	Businesses <sup>a</sup>	Vessels <sup>a</sup>	Trips	Angler Days	King salmon ≥ 28"		King salmon < 28"		Coho Kept	Sockeye Kept	Pink Kept	Chum Kept
						Kept	Released	Kept	Released				
J	Cordova	5	6	54	186	0	1	0	1	30	0	52	25
J	Port Ashton Lodge	6	6	19	100	2	0	0	0	198	0	1	0
J	Valdez	41	47	1,271	6,456	20	6	12	7	5,513	92	124	25
J	Whittier	27	27	617	3,322	3	0	0	3	1,035	52	85	20
J	Other	5	5	70	282	0	0	0	0	313	0	24	5
N	Other	4	5	33	127	0	0	0	0	0	0	0	0
P	Anchor Point	40	43	1,466	7,572	107	0	4	0	922	79	121	6
P	Deep Creek	70	92	3,239	17,561	177	6	23	3	239	4	7	8
P	Homer	127	152	5,357	36,862	630	10	90	19	6,710	145	608	28
P	Ninilchik	17	20	364	1,605	31	0	2	0	2	0	1	0
P	Seldovia	8	8	146	623	16	9	1	0	169	19	33	0
P	Other	11	22	379	1,284	98	9	5	0	60	11	3	3
P	Seward	80	120	4,286	31,508	509	27	124	112	50,985	207	1,328	67
Q	Anton Larsen Bay	4	4	12	52	1	0	0	0	7	0	0	0
Q	Kodiak	36	38	956	4,317	1,608	53	60	22	2,882	45	453	58
Q	Larsen Bay	9	18	524	2,025	54	17	13	69	2,060	6	58	2
Q	Port Lions	9	12	291	1,206	137	1	20	7	994	2	23	16
Q	Ugak Bay	5	6	56	224	9	0	6	2	117	8	8	1
Q	Other	25	38	894	3,039	413	21	44	88	2,675	450	248	13
R	Other	8	11	147	518	0	0	0	0	149	0	1	0
	Other Southcentral	2	5	151	742	3	0	1	0	840	197	42	2
	Total Southcentral	417	547	20,332	119,611	3,818	160	405	333	75,900	1,317	3,220	279

Note: Participation (number of businesses, vessels, trips and angler days) was determined by number of trips, not targeted species. Responses with less than 4 businesses are not reported separately, to protect confidentiality of respondents. Data are current as of 05/25/2010.

<sup>a</sup> Business and vessel regional and total counts are not additive as they can offload at multiple ports.

Appendix H3.—Saltwater logbook salmon participation, effort, kept and released by region, statewide, 2009.

Region	Businesses <sup>a</sup>	Vessels <sup>a</sup>	Trips	Angler Days	King salmon ≥ 28"		King salmon < 28"		Coho Kept	Sockeye Kept	Pink Kept	Chum Kept
					Kept	Released	Kept	Released				
SE	387	669	28,174	110,285	25,792	4,969	620	9,172	142,699	918	59,719	10,839
SC	417	547	20,332	119,611	3,818	160	405	333	75,900	1,317	3,220	279
Total	803	1,215	48,506	229,896	29,610	5,129	1,025	9,505	218,599	2,235	62,939	11,118

Note: Participation (number of businesses, vessels, trips and angler days) was determined by number of trips, not targeted species. Responses with less than 4 businesses are not reported separately, to protect confidentiality of respondents. Data are current as of 05/25/2010.

<sup>a</sup> Business and vessel regional and total counts are not additive as they can offload at multiple ports.

Appendix H4.–Saltwater logbook bottomfish participation, effort, kept and released by area and port of offloading, Southeast Alaska, 2009.

Area	Port of Offloading	Businesses <sup>a</sup>	Vessels <sup>a</sup>	Trips	Anglers	Rockfish											Shark
						Halibut		Lingcod		Pelagic		Yelloweye		Non-Pelagic			
						Kept	Released	Kept	Released	Kept	Released	Kept	Released	Kept	Released	Kept	
A	Clover Pass	5	5	117	441	356	17	22	7	255	3	62	0	12	0	0	
A	Ketchikan	68	92	4,364	17,283	3,091	1,902	110	148	1,050	148	1,062	63	2,929	243	2	
A	Knudson Cove	18	21	1,058	4,376	285	48	2	11	51	18	31	0	50	4	0	
A	Other	11	31	918	2,505	741	133	8	8	283	10	125	12	300	17	0	
B	Coffman Cove	7	9	154	568	468	362	5	2	46	0	25	0	98	1	0	
B	Craig	31	58	1,413	4,698	3,444	2,054	567	518	2,884	331	988	10	1,184	158	1	
B	Klawock	10	21	501	1,517	1,321	862	173	283	1,560	139	160	42	562	426	0	
B	Point Baker	5	6	120	416	221	101	49	72	692	39	129	17	243	37	0	
B	Thorne Bay	6	9	194	695	270	84	32	40	168	0	115	5	234	6	0	
B	Whale Pass	7	10	89	271	161	104	1	0	28	0	1	0	54	4	0	
B	Other	25	71	2,904	11,261	7,223	2,219	1,039	1,341	5,528	775	1,999	104	1,622	240	2	
C	Petersburg	31	36	715	2,761	1,486	3,379	15	56	513	120	73	12	116	54	0	
C	Wrangell	11	10	145	570	163	72	14	2	18	4	9	0	6	0	0	
C	Other	6	11	217	786	596	641	7	64	913	118	50	16	65	13	0	
D	Crescent Harbor	5	7	100	376	245	41	6	21	230	0	164	3	45	0	0	
D	Port Alexander	4	5	113	392	248	198	11	37	58	82	37	0	7	5	0	
D	Sealing Cove	4	6	50	193	55	13	15	16	81	1	34	1	10	0	0	
D	Sitka	106	167	6,930	27,465	14,439	5,522	1,255	5,518	22,515	1,510	6,292	369	3,030	102	6	
D	Other	12	25	529	1,659	919	582	39	89	339	584	157	5	140	25	0	
E	Angoon	7	12	168	563	381	256	13	14	134	9	14	0	117	1	1	
E	Auke Bay	32	41	1,827	7,792	1,890	2,104	3	4	605	15	66	2	839	33	0	
E	Juneau	28	40	513	1,836	473	758	5	23	308	143	72	15	218	45	0	
E	Other	8	22	708	2,729	2,016	941	67	62	1,720	57	208	5	485	2	0	
F1	Skagway	7	8	368	1,276	4	11	0	0	0	0	0	0	0	0	0	
G	Bartlett Cove	7	19	131	515	352	265	34	72	53	9	28	2	26	2	0	
G	Elfin Cove	10	23	1,016	3,904	2,471	2,550	228	1,728	2,230	653	593	48	460	28	0	
G	Gustavus	17	34	1,265	4,997	3,547	6,420	127	419	440	50	139	6	115	1	0	
G	Hoonah	16	17	491	2,298	1,171	5,579	17	8	36	18	10	2	42	17	0	
G	Pelican	4	5	134	429	269	219	21	95	86	23	28	0	1	0	0	
G	Other	6	7	185	2,777	2,908	143	2	19	80	30	12	0	7	11	0	
H	Yakutat	7	10	585	2,404	3,055	641	530	520	1,998	56	44	1	189	4	0	
	Other Southeast	4	4	152	532	124	50	0	0	0	0	2	0	1	0	0	
	Total Southeast	387	669	28,174	110,285	54,393	38,271	4,417	11,197	44,902	4,945	12,729	740	13,207	1,479	12	

Note: Participation (number of businesses, vessels, trips and angler days) was determined by number of trips, not targeted species. Responses with less than 4 businesses are not reported separately, to protect confidentiality of respondents. Data are current as of 05/25/2010.

<sup>a</sup> Business and vessel regional and total counts are not additive as they can offload at multiple ports.



Appendix H5.—Saltwater logbook bottomfish participation, effort, kept and released by area and port of offloading, Southcentral Alaska, 2009.

Area	Port of Offloading	Businesses <sup>a</sup>	Vessels <sup>a</sup>	Trips	Anglers	Rockfish										Shark
						Halibut		Lingcod		Pelagic		Non-pelagic		Yelloweye		
						Kept	Released	Kept	Released	Kept	Released	Kept	Released	Kept	Released	
J	Cordova	5	6	54	186	91	27	5	10	57	9	28	10	27	22	1
J	Port Ashton Lodge	6	6	19	100	179	59	51	9	81	0	17	0	14	0	0
J	Valdez	41	47	1,271	6,456	6,934	5,039	2,180	1,188	2,262	285	1,606	173	243	20	32
J	Whittier	27	27	617	3,322	3,971	2,757	514	511	1,073	298	614	19	340	17	5
J	Other	5	5	70	282	133	54	19	13	89	17	69	7	14	8	0
N	Other	4	5	33	127	174	80	0	0	0	0	0	0	0	0	0
P	Anchor Point	40	43	1,466	7,572	14,549	21,838	307	156	362	21	133	4	15	0	0
P	Deep Creek	70	92	3,239	17,561	33,383	51,480	119	68	249	0	42	0	0	0	2
P	Homer	127	152	5,357	36,862	68,563	103,839	3,739	2,105	8,075	752	997	38	233	68	2
P	Ninilchik	17	20	364	1,605	3,062	5,126	0	0	0	0	0	0	2	0	1
P	Seldovia	8	8	146	623	1,052	1,327	33	45	43	53	32	11	0	0	0
P	Other	11	22	379	1,284	2,186	3,453	28	0	6	0	0	0	2	0	0
P	Seward	80	120	4,286	31,508	39,835	19,386	5,293	3,225	24,340	1,986	3,266	82	1,389	152	3
Q	Anton Larsen Bay	4	4	12	52	80	104	0	0	30	0	0	0	0	0	0
Q	Kodiak	36	38	956	4,317	6,383	6,016	871	267	8,675	1,624	270	1	101	35	0
Q	Larsen Bay	9	18	524	2,025	2,912	7,369	47	22	1,268	268	186	11	73	24	0
Q	Port Lions	9	12	291	1,206	1,319	695	162	18	741	114	29	0	33	2	0
Q	Ugak Bay	5	6	56	224	121	98	6	5	211	270	1	0	0	23	0
Q	Other	25	38	894	3,039	2,969	3,627	558	401	2,563	2,073	449	32	84	47	5
R	Other	8	11	147	518	735	855	7	8	27	159	2	0	16	3	0
	Other Southcentral	2	5	151	742	568	185	80	91	1,223	54	155	5	20	7	0
	Total Southcentral	417	547	20,332	119,611	189,199	233,414	14,019	8,142	51,375	7,983	7,896	393	2,606	428	51

Note: Participation (number of businesses, vessels, trips and angler days) was determined by number of trips, not targeted species. Responses with less than 4 businesses are not reported separately, to protect confidentiality of respondents. Data are current as of 05/25/2010.

<sup>a</sup> Business and vessel regional and total counts are not additive as they can offload at multiple ports.

Appendix H6.—Saltwater logbook bottomfish participation, effort, kept and released by region, statewide, 2009.

Region	Businesses <sup>a</sup>	Vessels <sup>a</sup>	Trips	Anglers	Rockfish										Shark
					Halibut		Lingcod		Pelagic		Non-pelagic		Yelloweye		
					Kept	Released	Kept	Released	Kept	Released	Kept	Released	Kept	Released	
SE	387	669	28,174	110,285	54,393	38,271	4,417	11,197	44,902	4,945	12,729	740	13,207	1,479	12
SC	417	547	20,332	119,611	189,199	233,414	14,019	8,142	51,375	7,983	7,896	393	2,606	428	51
Total	803	1,215	48,506	229,896	243,592	271,685	18,436	19,339	96,277	12,928	20,625	1,133	15,813	1,907	63

Note: Participation (number of businesses, vessels, trips and angler days) was determined by number of trips, not targeted species. Responses with less than 4 businesses are not reported separately, to protect confidentiality of respondents. Data are current as of 05/25/2010.

<sup>a</sup> Business and vessel regional and total counts are not additive as they can offload at multiple ports.



**APPENDIX I**  
**FRESHWATER LOGBOOK SUMMARIES BY AREA**

Appendix II.—Freshwater logbook participation by site code and area, Southeast Alaska, 2009.

Area	Site	Trips	Businesses <sup>a</sup>	Guides <sup>a</sup>	Angler Days					Total
					Resident	Nonresident	Comped	Unknown	Crew	
A	Other Lakes	14	5	7	1	45	0	1	0	47
A	Other Streams	97	6	9	1	234	0	1	0	236
B	Eagle Creek (Bear Creek)	11	5	5	0	23	0	0	0	23
B	Staney Creek	64	6	7	2	140	0	0	0	142
B	Thorne System Stream and Lake	27	4	6	2	57	0	0	0	59
B	Other Lakes and Streams	31	6	6	3	56	0	0	0	59
C	Lakes and Streams	40	9	9	7	146	0	0	1	154
D	Katlian River (Baranof Island)	14	5	5	6	41	0	0	0	47
D	Nakwasina Sound Streams (Baranof Island)	27	7	9	1	78	0	0	1	80
D	Plotnikof and Rezanof Streams and Lakes (Baranof Island)	12	4	4	1	34	0	1	2	38
D	Saook Bay Streams (Baranof Island)	36	4	11	1	200	0	0	10	211
D	Sitkoh Creek and Lake (Chichagof Island)	10	7	9	0	31	0	0	1	32
D	Other Lakes	41	6	11	5	106	0	0	3	114
D	Other Streams	144	16	26	3	427	0	4	20	454
D	Unspecified Streams	28	9	11	0	86	0	0	0	86
E	Admiralty Island Streams (Admiralty Island)	131	6	13	0	542	0	2	3	547
E	Chaik Bay Streams (Admiralty Island)	45	4	9	0	170	0	0	0	170
E	Other Streams	291	9	25	11	1,203	0	1	1	1,216
G	Mud Bay Creek (Chichagof Island)	26	6	7	0	85	0	0	1	86
G	Trail River (Chichagof Island)	21	5	6	0	77	0	0	18	95
G	Other Streams	25	5	8	0	107	5	0	9	121
H	Situk River (reach unspecified)	461	6	16	65	998	1	7	45	1,116
H	Tsiu River	363	4	21	29	1,180	0	0	5	1,214
H	Other Streams	364	12	23	27	1,221	12	4	114	1,378
	Other Lakes and Streams in Southeast	77	3	8	0	325	0	16	0	341
	Total Southeast	2,400	63	143	165	7,612	18	37	234	8,066

Note: Responses with less than 4 businesses are not reported separately, to protect confidentiality of respondent. Data are current as of 09/01/2010.

<sup>a</sup> Regional and statewide business and guide totals aren't additive because a business and/or guide can operate in multiple sites and areas.

Appendix I2.—Freshwater logbook participation by site code and area, Southcentral Alaska, 2009.

Area	Site	Trips	Businesses <sup>a</sup>	Guides <sup>a</sup>	Angler Days					Total
					Resident	Nonresident	Comped	Unknown	Crew	
J	Other East Prince William Sound Streams	34	4	5	1	115	0	0	1	117
J	Other Lakes and Streams	7	4	5	4	21	0	0	3	28
K	Lakes and Streams	473	13	19	622	994	7	16	50	1,689
M	Alexander Lake	14	5	8	1	31	0	0	2	34
M	Chulitna River	25	5	6	2	66	0	1	1	70
M	Deshka River (Kroto Creek) below weir	76	8	8	91	178	0	2	13	284
M	Fish Lake Creek and Fish Lakes (Yentna Drainage)	30	6	9	10	68	0	0	0	78
M	Indian Creek (into Yentna near Fish Lakes)	91	7	20	38	249	0	0	24	311
M	Lake Creek	1,444	23	63	324	3,696	6	0	100	4,126
M	Little Willow Creek	25	6	6	25	47	0	0	9	81
M	Talachulitna River	356	11	23	20	1,053	3	0	22	1,098
M	Talkeetna River	339	9	24	218	1,140	0	19	21	1,398
M	Willow Creek	20	5	6	14	16	0	1	3	34
M	Yentna River	89	8	12	32	227	0	0	7	266
M	Yentna River Drainage (Remainder)	191	14	34	5	543	1	6	15	570
M	Other Streams - Chulitna / East Susitna Drainage	56	12	13	64	123	0	0	5	192
M	Other Streams - West Susitna Drainage	31	9	9	27	63	0	0	8	98
N	Bachatna Creek	21	7	8	1	86	0	0	0	87
N	Big River Lakes	822	25	40	191	2,856	0	28	19	3,094
N	Chuitna River	68	12	17	12	233	0	0	0	245
N	Crescent Lake	126	10	15	11	402	0	1	2	416
N	Crescent River (Grecian River)	36	4	7	1	103	0	0	1	105
N	Kamishak River	111	6	17	3	327	0	2	3	335
N	Kustatan River	242	25	34	93	865	0	11	27	996
N	Wolverine Creek (by Big River Lakes)	417	16	30	57	1,466	0	11	4	1,538
N	Other Sites (South of North Forelands)	82	10	19	9	263	0	1	0	273
N	Other Sites between North Forelands and Susitna Drainage	35	7	11	9	102	0	0	3	114
P	Anchor River	25	8	9	10	55	0	1	4	70
P	Deep Creek	39	5	6	7	142	3	0	2	154
P	Kasilof River above Highway - (logbook only)	32	8	8	7	90	0	4	1	102
P	Kasilof River below Highway - (logbook only)	1,746	84	117	1,066	4,576	24	26	65	5,757
P	Kasilof River reach not specified	96	27	33	30	260	2	4	0	296
P	Kenai River - Cook Inlet to Soldotna Bridge	6,136	191	255	3,864	17,000	82	130	80	21,156
P	Kenai River - guided, reach not specified	208	38	45	99	530	0	2	1	632
P	Kenai River - Moose River to Skilak Outlet	1,128	80	121	601	2,736	6	19	23	3,385
P	Kenai River - Skilak Inlet to Kenai Lake	2,282	43	85	1,059	5,691	16	52	44	6,862
P	Kenai River - Soldotna Bridge to Moose R	614	62	82	246	1,677	2	5	7	1,937
P	Ptarmigan Creek	7	4	5	2	9	0	0	0	11

-continued-

Appendix I2.–Page 2 of 3.

Area	Site	Trips	Businesses <sup>a</sup>	Guides <sup>a</sup>	Angler Days					Total
					Resident	Nonresident	Comped	Unknown	Crew	
P	Russian River	52	15	22	12	103	0	1	3	119
P	Stocked Lakes	6	4	4	0	17	0	0	0	17
P	Other Lakes	40	8	11	5	125	0	2	14	146
P	Other Streams	117	11	18	23	424	1	4	4	456
Q	Ayakulik River (sometimes called Red River)	156	5	8	36	465	0	5	0	506
Q	Buskin River	16	5	5	1	34	0	0	4	39
Q	Dog Salmon Creek (Frazer River)	86	6	11	20	296	0	5	5	326
Q	Karluk Lagoon and River below Weir (to .5 m above lagoon)	77	5	11	3	341	0	0	3	347
Q	Karluk Lake and River above Weir	83	7	10	7	536	0	0	8	551
Q	Olds River	10	5	5	1	37	1	0	2	41
Q	Pasagshak River	17	5	5	1	48	0	0	3	52
Q	Saltery River	270	8	17	36	785	7	5	37	870
Q	Roadside Lakes	48	5	9	3	132	0	0	0	135
Q	Roadside Streams	43	12	14	1	139	0	1	2	143
Q	Other Remote Streams	358	24	38	58	1,028	1	8	46	1,141
R	American Creek	488	14	45	62	1,140	0	3	7	1,212
R	Becharof System	241	17	48	23	784	0	4	11	822
R	Brooks Lake	28	7	11	4	57	1	0	0	62
R	Brooks River	253	22	76	23	632	3	1	5	664
R	Naknek Lake	47	6	8	31	144	0	0	9	184
R	Naknek River (dwnstream frm Rapids Camp incl trib)	308	10	33	36	673	11	1	80	801
R	Naknek River (Rapids Camp upstream to Naknek Lk,incl trib)	574	13	43	57	1,433	12	3	73	1,578
R	Naknek River and Tributaries	565	22	58	120	1,370	15	17	22	1,544
R	Ugashik System	80	16	32	5	205	0	0	6	216
R	Unspecified Streams	65	14	28	3	196	0	0	4	203
R	Other Alaska Peninsula / Aleutian Lakes	50	7	14	3	206	0	2	15	226
R	Other Alaska Peninsula / Aleutian Streams	908	20	54	80	2,416	0	1	22	2,519
S	Alagnak (Branch) River	1,418	23	87	54	2,992	2	3	45	3,096
S	Battle River	137	11	37	4	369	0	0	18	391
S	Copper River (Lake Iliamna Area)	422	7	35	11	1,014	0	0	0	1,025
S	Funnel Creek	54	6	14	7	124	1	0	0	132
S	Gibraltar Lake	8	6	7	0	20	0	0	0	20
S	Gibraltar River	153	8	26	3	372	0	0	0	375
S	Iliamna River	123	4	9	6	287	0	2	0	295
S	Kijik Lake	6	4	5	1	15	0	5	1	22
S	Kukaklek River (Big Ku) (into Alagnak)	112	12	30	23	238	0	3	0	264
S	Kulik Lake	5	4	5	1	13	0	0	0	14
S	Kulik River	416	13	54	63	1,006	0	2	0	1,071
S	Kvichak River	729	21	87	96	1,479	1	5	4	1,585

-continued-

Appendix I2.–Page 3 of 3.

Area	Site	Trips	Businesses <sup>a</sup>	Guides <sup>a</sup>	Angler Days				Total	
					Resident	Nonresident	Comped	Unknown		
S	Lake Clark	90	10	22	14	237	0	0	11	262
S	Lake Iliamna	128	13	26	4	411	0	0	0	415
S	Little Kulik (into Nanuktuk Creek)	17	8	10	0	43	0	0	0	43
S	Lower Talarik Creek	35	7	13	2	98	1	0	0	101
S	Moraine Creek	510	21	85	12	1,162	2	0	10	1,186
S	Nanuktuk Creek	46	10	19	2	93	0	0	0	95
S	Newhalen River	26	4	10	1	83	0	0	0	84
S	Nonvianuk Lake	14	4	5	2	21	0	0	13	36
S	Nonvianuk River (into Alagnak)	83	9	16	3	190	0	0	20	213
S	Tazimina River	76	5	13	12	165	0	1	0	178
S	Other Streams	33	9	12	6	79	0	0	0	85
T	Agulowak River	484	8	41	67	852	12	0	0	931
T	Agulukpak River	192	9	36	13	358	1	0	0	372
T	Aleknagik Lake	34	5	12	1	79	0	0	0	80
T	Mulchatna River	43	11	14	0	144	0	0	0	144
T	Nushagak River - Black Point upstream to Sonar Site	713	26	87	161	2,025	0	1	77	2,264
T	Nushagak River - Sonar Site to Outlet of Mulchatna	1,063	27	93	220	3,012	3	0	40	3,275
T	Nushagak River - upstream from mouth of Mulchatna River	51	5	19	0	100	0	0	0	100
T	Nushagak River System (incl. Harris Creek, King Salmon R.)	292	20	44	38	597	2	2	7	646
T	Tikchik-Nuyakuk Lake System	118	7	21	7	227	0	0	0	234
T	Togiak River System	557	9	44	31	1,185	1	6	0	1,223
T	Wood River Lakes System	179	10	41	3	393	0	0	0	396
T	Other Streams	347	8	30	7	699	0	0	1	707
	Other Lakes and Streams in Southcentral	1	1	1	0	2	0	0	0	2
	<b>Total Southcentral</b>	<b>31,305</b>	<b>475</b>	<b>1,089</b>	<b>0,420</b>	<b>82,097</b>	<b>230</b>	<b>436</b>	<b>1,204</b>	<b>94,387</b>

Note: Responses with less than 4 businesses are not reported separately, to protect confidentiality of respondent. Data are current as of 09/01/2010.

<sup>a</sup> Regional and statewide business and guide totals aren't additive because a business and/or guide can operate in multiple sites and areas.

Appendix I3.–Freshwater logbook participation by site code and area, AYK Alaska, 2009.

Area	Site	Trips	Businesses <sup>a</sup>	Guides <sup>a</sup>	Angler Days					Total
					Resident	Nonresident	Comped	Unknown	Crew	
I	Gulkana River (reach unspecified)	33	6	11	18	78	1	0	4	101
I	Gulkana River (West Fork to Highway)	71	10	12	49	183	0	4	6	242
I	Klutina River	358	13	28	339	755	9	11	38	1,152
I	Other Streams	15	5	7	14	13	2	3	0	32
U	Other Lakes	71	6	8	37	252	1	1	57	348
U	Other Streams	317	8	21	53	847	1	1	40	942
V	Aniak River	410	5	23	7	757	0	1	2	767
V	Goodnews River	435	6	16	18	765	0	0	0	783
V	Holitna River	151	6	17	1	327	0	0	6	334
V	Kanektok River (Quinhagak, Chosen)	1,110	5	49	13	2,090	1	1	0	2,105
V	Unspecified Streams	63	7	14	0	105	0	0	29	134
V	Unspecified Streams - Kuskokwim Drainage below Aniak	47	4	4	44	162	2	0	39	247
V	Unspecified Streams (Kuskowim Bay)	58	4	15	1	163	0	0	6	170
W	Other Streams	402	6	15	11	801	1	0	10	823
Y	Lakes and Streams	284	6	17	36	520	0	0	10	566
	Other Lakes and Streams in AYK	24	3	3	5	158	0	0	0	163
	Total AYK	3,849	67	203	646	7,976	18	22	247	8,909

Note: Responses with less than 4 businesses are not reported separately, to protect confidentiality of respondent. Data are current as of 09/01/2010.

<sup>a</sup> Regional and statewide business and guide totals aren't additive because a business and/or guide can operate in multiple sites and areas.

56

Appendix I4.–Freshwater logbook participation by region, statewide, 2009.

Region	Trips	Businesses <sup>a</sup>	Guides <sup>a</sup>	Angler Days					Total
				Resident	Non-Res	Comped	Unknown	Crew	
Southeast	2,400	63	143	165	7,612	18	37	234	8,066
Southcentral	31,305	475	1,089	10,420	82,097	230	436	1,204	94,387
Arctic-Yukon-Kuskokwim	3,849	67	203	646	7,976	18	22	247	8,909
Total	37,554	586	1,375	11,231	97,685	266	495	1,685	111,362

Note: Responses with less than 4 businesses are not reported separately, to protect confidentiality of respondent. Data are current as of 09/01/2010.

<sup>a</sup> Regional and statewide business and guide totals aren't additive because a business and/or guide can operate in multiple sites and areas.



Appendix I5.—Freshwater logbook angler days and species kept by area and site, Southeast Alaska, 2009.

Area	Site	Angler	Salmon			Cutthroat	Rainbow	Steelhead	Lake Trout	Dolly Varden	Grayling	Pike	Sheefish
		Days	King	Coho	Sockeye								
A	Other Lakes	47	0	0	0	2	0	0	0	0	0	0	0
A	Other Streams	236	0	111	0	0	0	0	0	5	0	0	0
B	Eagle Creek (Bear Creek)	23	0	1	0	0	0	0	0	0	0	0	0
B	Staney Creek	142	0	134	0	0	0	0	0	0	0	0	0
B	Thorne System Stream and Lake	59	0	64	0	0	0	0	0	2	0	0	0
B	Other Lakes and Streams	59	0	6	3	0	0	0	0	4	0	0	0
C	Lakes and Streams	154	4	68	4	1	0	0	0	10	0	0	0
D	Katlilan River (Baranof Island)	47	0	1	0	0	0	0	0	0	0	0	0
D	Nakwasina Sound Streams (Baranof Island)	80	0	0	0	0	0	0	0	5	0	0	0
D	Plotnikof and Rezanof Streams and Lakes (Baranof Island)	38	0	15	0	0	0	0	0	0	0	0	0
D	Saook Bay Streams (Baranof Island)	211	0	0	0	0	0	0	0	18	0	0	0
D	Sitkoh Creek and Lake (Chichagof Island)	32	0	0	0	0	0	0	0	0	0	0	0
D	Other Lakes	114	0	5	0	0	1	1	0	0	0	0	0
D	Other Streams	454	0	29	3	3	1	0	0	1	0	0	0
D	Unspecified Streams	86	0	25	0	1	0	0	0	0	0	0	0
E	Admiralty Island Streams (Admiralty Island)	547	0	24	16	0	0	0	0	134	0	0	0
E	Chaik Bay Streams (Admiralty Island)	170	0	0	0	0	0	0	0	32	0	0	0
E	Other Streams	1,216	0	19	0	0	0	0	0	3	0	0	0
G	Mud Bay Creek (Chichagof Island)	86	0	5	1	0	0	0	0	24	0	0	0
G	Trail River (Chichagof Island)	95	0	0	0	0	0	0	0	0	0	0	0
G	Other Streams	121	0	1	0	0	0	0	0	9	0	0	0
H	Situk River (reach unspecified)	1,116	10	410	821	5	0	3	0	11	0	0	0
H	Tsiu River	1,214	0	2,842	0	0	0	0	0	0	0	0	0
H	Other Streams	1,378	29	2,314	229	7	1	0	0	26	0	0	0
	Other Lakes and Streams in Southeast	341	0	0	46	0	0	0	0	17	0	0	0
	Total Southeast	8,066	43	6,074	1,123	19	3	4	0	301	0	0	0

Note: Responses with less than 4 businesses are not reported separately, to protect confidentiality of respondent. Data are current as of 09/01/2010.

Appendix I6.—Freshwater logbook angler days and species kept by area and site, Southcentral Alaska, 2009.

Area Site	Angler	Salmon					Cutthroat	Rainbow	Steelhead	Lake Trout	Dolly Varden	Grayling	Pike	Sheefish
	Days	Kings	Coho	Sockeye										
J Other East Prince William Sound Streams	117	1	113	0	0	0	0	0	0	0	0	0	0	
J Other Lakes and Streams	28	0	53	1	0	0	0	0	0	0	0	0	0	
K Lakes and Streams	1,689	323	718	5	0	3	0	0	0	0	0	0	0	
M Alexander Lake	34	0	9	0	0	0	0	0	0	0	0	107	0	
M Chulitna River	70	5	4	0	0	1	0	0	0	0	0	0	0	
M Deshka River (Kroto Creek) below weir	284	4	483	9	0	0	0	0	0	0	0	6	0	
M Fish Lake Creek and Fish Lakes (Yentna Drainage)	78	13	2	0	0	0	0	0	0	0	0	71	0	
M Indian Creek (into Yentna near Fish Lakes)	311	3	672	0	0	0	0	0	0	0	0	2	0	
M Lake Creek	4,126	786	1,818	411	0	12	0	0	1	0	1	0	0	
M Little Willow Creek	81	0	95	0	0	0	0	0	0	0	0	0	0	
M Talachulitna River	1,098	132	223	374	0	0	0	0	0	4	0	0	0	
M Talkeetna River	1,398	254	276	554	0	1	0	1	5	0	0	0	0	
M Willow Creek	34	0	0	0	0	0	0	0	0	0	0	0	0	
M Yentna River	266	40	188	50	0	0	0	0	0	0	2	0	0	
M Yentna River Drainage (Remainder)	570	101	267	3	0	12	0	4	0	0	0	0	0	
M Other Streams - Chulitna / East Susitna Drainage	192	80	0	1	0	0	0	0	0	10	1	0	0	
M Other Streams - West Susitna Drainage	98	4	57	1	0	0	0	0	0	0	0	0	0	
N Bachatna Creek	87	0	254	0	0	0	0	0	0	0	0	0	0	
N Big River Lakes	3,094	6	3,081	4,389	0	0	0	0	7	0	0	0	0	
N Chuitna River	245	107	107	0	0	0	0	0	0	0	0	0	0	
N Crescent Lake	416	0	395	392	0	0	0	23	63	1	0	0	0	
N Crescent River (Grecian River)	105	2	117	84	0	0	0	3	3	0	0	0	0	
N Kamishak River	335	0	316	22	0	13	0	0	42	3	0	0	0	
N Kustatan River	996	0	2,446	61	0	0	0	0	27	0	0	0	0	
N Wolverine Creek (by Big River Lakes)	1,538	0	1,012	2,625	0	0	0	0	4	0	0	0	0	
N Other Sites (South of North Forelands)	273	0	316	0	0	0	0	0	4	0	0	0	0	
N Other Sites between North Forelands and Susitna Drainage	114	9	71	11	0	0	0	0	0	0	0	0	0	
P Anchor River	70	5	0	0	0	0	0	0	11	0	0	0	0	
P Deep Creek	154	3	55	0	0	0	0	0	10	0	0	0	0	
P Kasilof River above Highway - (logbook only)	102	14	111	4	0	2	0	0	4	0	0	0	0	
P Kasilof River below Highway - (logbook only)	5,757	2,214	755	152	0	1	2	0	51	1	0	0	0	
P Kasilof River reach not specified	296	107	30	9	0	0	0	0	7	0	0	0	0	
P Kenai River - Cook Inlet to Soldotna Bridge	21,156	3,611	6,536	674	0	33	0	0	44	0	0	0	0	
P Kenai River - guided, reach not specified	632	49	87	125	0	4	0	0	7	0	0	0	0	
P Kenai River - Moose River to Skilak Outlet	3,385	88	2,567	1,065	0	37	0	0	19	0	0	0	0	
P Kenai River - Skilak Inlet to Kenai Lake	6,862	22	190	5,479	0	68	0	0	62	0	0	0	0	
P Kenai River - Soldotna Bridge to Moose R	1,937	288	487	628	0	17	0	0	3	0	0	0	0	
P Ptarmigan Creek	11	0	0	0	0	0	0	0	0	0	0	0	0	
P Quartz Creek	66	0	0	2	0	0	0	0	0	0	0	0	0	

-continued-

Appendix I6.--Page 2 of 3.

Area Site	Angler	Salmon					Cutthroat	Rainbow	Steelhead	Lake Trout	Dolly Varden	Grayling	Pike	Sheefish
	Days	Kings	Coho	Sockeye										
P Russian River	119	0	0	108	0	0	0	0	0	0	0	0	0	
P Stocked Lakes	17	0	0	0	0	0	0	0	0	0	0	0	0	
P Other Lakes	146	0	0	0	1	17	0	1	0	29	0	0	0	
P Other Streams	456	61	256	1	0	6	0	0	22	5	0	0	0	
Q Ayakulik River (sometimes called Red River)	506	0	195	206	0	0	0	0	43	0	0	0	0	
Q Buskin River	39	0	23	0	0	0	0	0	15	0	0	0	0	
Q Dog Salmon Creek (Frazer River)	326	0	92	714	0	0	0	0	52	0	0	0	0	
Q Karluk Lagoon and River below Weir (to .5 m above lagoon)	347	0	582	601	0	0	1	0	66	0	0	0	0	
Q Karluk Lake and River above Weir	551	0	13	41	0	0	6	0	142	0	0	0	0	
Q Olds River	41	1	4	0	0	0	0	0	1	0	0	0	0	
Q Pasagshak River	52	0	10	0	0	0	0	0	0	0	0	0	0	
Q Saltery River	870	1	267	865	0	0	0	0	181	0	0	0	0	
Q Roadside Lakes	135	0	38	1	0	0	0	0	22	0	0	0	0	
Q Roadside Streams	143	0	7	21	0	0	0	0	5	0	0	0	0	
Q Other Remote Streams	1,141	0	506	863	0	0	1	0	89	0	0	0	0	
R American Creek	1,212	0	0	0	0	26	0	1	58	0	0	0	0	
R Becharof System	822	3	1,736	17	0	1	0	0	20	2	0	0	0	
R Brooks Lake	62	0	0	0	0	0	0	0	0	0	0	0	0	
R Brooks River	664	0	3	8	0	0	0	0	0	0	0	0	0	
R Naknek Lake	184	0	0	2	0	0	0	8	0	0	2	0	0	
R Naknek River (dwnstream frm Rapids Camp incl trib)	801	365	325	81	0	0	0	0	0	0	2	0	0	
R Naknek River (Rapids Camp upstream to Naknek Lk,incl trib)	1,578	34	807	1,600	0	23	0	0	1	0	0	0	0	
R Naknek River and Tributaries	1,544	261	993	297	0	8	0	0	33	9	0	0	0	
R Ugashik System	216	0	96	16	0	0	0	0	21	0	0	0	0	
R Unspecified Streams	203	60	192	3	0	4	0	0	0	0	0	0	0	
R Other Alaska Peninsula / Aleutian Lakes	226	3	297	234	0	0	0	0	56	0	0	0	0	
R Other Alaska Peninsula / Aleutian Streams	2,519	467	1,627	666	0	20	0	0	124	0	0	0	0	
S Alagnak (Branch) River	3,096	150	558	2,494	0	7	0	2	1	7	0	0	0	
S Battle River	391	0	0	0	0	0	0	0	0	0	0	0	0	
S Copper River (Lake Iliamna Area)	1,025	0	2	52	0	0	0	0	0	0	0	0	0	
S Funnel Creek	132	0	0	0	0	0	0	0	0	0	0	0	0	
S Gibraltar Lake	20	0	0	20	0	0	0	0	0	0	0	0	0	
S Gibraltar River	375	0	0	64	0	0	0	0	0	0	0	0	0	
S Iliamna River	295	0	0	243	0	0	0	0	0	0	0	0	0	
S Kijik Lake	22	0	0	0	0	0	0	0	16	35	0	0	0	
S Kukaklek River (Big Ku) (into Alagnak)	264	0	0	57	0	5	0	0	0	0	0	0	0	
S Kulik Lake	14	0	0	0	0	0	0	0	0	0	0	0	0	
S Kulik River	1,071	0	0	0	0	63	0	24	0	0	0	0	0	
S Kvichak River	1,585	5	335	1,319	0	12	0	0	1	25	6	0	0	

-continued-

Appendix I6.–Page 3 of 3.

Area Site	Angler	Salmon										
	Days	Kings	Coho	Sockeye	Cutthroat	Rainbow	Steelhead	Lake Trout	Dolly Varden	Grayling	Pike	Sheefish
S Lake Clark	262	0	4	0	0	0	0	6	0	32	4	0
S Lake Iliamna	415	1	28	720	0	0	0	0	0	1	0	0
S Little Kulik (into Nanuktuk Creek)	43	0	0	0	0	0	0	0	0	0	0	0
S Lower Talarik Creek	101	0	9	0	0	0	0	0	0	0	0	0
S Moraine Creek	1,186	0	0	4	0	0	0	0	0	0	0	0
S Nanuktuk Creek	95	0	0	4	0	1	0	0	0	0	0	0
S Newhalen River	84	0	0	0	0	0	0	0	0	3	0	0
S Nonvianuk Lake	36	0	0	0	0	0	0	1	0	0	0	0
S Nonvianuk River (into Alagnak)	213	2	0	7	0	4	0	37	1	0	0	0
S Tazimina River	178	0	0	164	0	0	0	0	3	0	0	0
S Other Streams	85	0	30	0	0	0	0	0	0	0	0	0
T Agulowak River	931	17	0	1,101	0	1	0	0	12	2	0	0
T Agulukpak River	372	0	0	0	0	1	0	0	0	0	0	0
T Aleknagik Lake	80	0	6	12	0	0	0	0	0	0	1	0
T Mulchatna River	144	13	2	7	0	0	0	2	2	0	0	0
T Nushagak River - Black Point upstream to Sonar Site	2,264	1,169	271	11	0	0	0	0	1	0	0	0
T Nushagak River - Sonar Site to Outlet of Mulchatna	3,275	1,738	1,320	8	0	2	0	1	13	0	4	0
T Nushagak River - upstream from mouth of Mulchatna River	100	33	77	0	0	0	0	0	0	0	0	0
T Nushagak River System (incl. Harris Creek, King Salmon R.)	646	63	34	49	0	0	0	0	29	8	0	0
T Tikchik-Nuyakuk Lake System	234	15	4	0	0	0	0	0	0	0	1	0
T Togiak River System	1,223	539	887	44	0	0	0	0	55	0	5	0
T Wood River Lakes System	396	1	255	34	0	0	0	0	6	0	0	0
T Other Streams	707	15	318	16	0	0	0	0	0	0	0	0
Other Lakes and Streams in Southcentral	2	0	0	0	0	0	0	0	0	0	0	0
Total Southcentral	94,387	13,288	36,120	29,906	1	405	10	114	1,465	177	215	0

Note: Responses with less than 4 businesses are not reported separately, to protect confidentiality of respondent. Data are current as of 09/01/2010.

Appendix I7.–Freshwater logbook angler days and species kept by area and site, AYK Alaska, 2009.

Area	Site	Angler	Salmon										
		Days	King	Coho	Sockeye	Cutthroat	Rainbow	Steelhead	Lake Trout	Dolly Varden	Grayling	Pike	Sheefish
I	Gulkana River (reach unspecified)	101	32	0	22	0	0	0	0	0	0	0	0
I	Gulkana River (West Fork to Highway)	242	115	0	11	0	0	0	0	0	0	0	0
I	Klutina River	1,152	374	5	540	0	3	0	0	185	28	0	0
I	Other Streams	32	3	0	0	0	0	0	6	40	3	0	0
U	Other Lakes	348	0	3	0	0	349	0	0	9	0	56	0
U	Other Streams	942	31	72	0	0	0	0	0	0	7	1	1
V	Aniak River	767	25	84	4	0	0	0	0	18	1	4	5
V	Goodnews River	783	42	266	104	0	1	0	0	49	0	0	0
V	Holitna River	334	16	37	5	0	0	0	0	4	1	12	6
V	Kanektok River (Quinhagak, Chosen)	2,105	250	926	137	0	1	0	0	25	0	0	0
V	Unspecified Streams	134	0	49	26	0	0	0	0	6	2	3	0
V	Unspecified Streams - Kuskokwim Drainage below Aniak	247	0	10	0	0	0	0	0	17	1	0	0
V	Unspecified Streams (Kuskowim Bay)	170	0	9	0	0	0	0	0	4	0	0	0
W	Other Streams	823	41	866	0	0	0	0	0	204	19	0	0
Y	Lakes and Streams	566	31	120	0	0	0	0	0	5	35	21	0
	Other Lakes and Streams in AYK	163	0	1	0	0	0	0	0	68	10	1	23
	Total AYK	8,909	960	2,448	849	0	354	0	6	634	107	98	35

Note: Responses with less than 4 businesses are not reported separately, to protect confidentiality of respondent. Data are current as of 09/01/2010.

Appendix I8.–Freshwater logbook angler days and species kept by region, statewide, 2009.

Region	Angler	Salmon										
	Days	King	Coho	Sockeye	Cutthroat	Rainbow	Steelhead	Lake Trout	Dolly Varden	Grayling	Pike	Sheefish
Southeast	8,066	43	6,074	1,123	19	3	4	0	301	0	0	0
Southcentral	94,387	13,288	36,120	29,906	1	405	10	114	1,465	177	215	0
Arctic-Yukon-Kuskokwim	8,909	960	2,448	849	0	354	0	6	634	107	98	35
Total	111,362	14,291	44,642	31,878	20	762	14	120	2,400	284	313	35

Note: Data are current as of 09/01/2010.

Appendix I9.—Freshwater logbook angler days and species released by area and site, Southeast Alaska, 2009.

Area Site	Angler	Salmon				Cutthroat	Rainbow	Steelhead	Lake Trout	Dolly Varden	Grayling	Pike	Sheefish
	Days	Kings	Coho	Sockeye									
A Other Lakes	47	0	0	0	455	30	0	0	0	0	0	0	
A Other Streams	236	1	57	0	77	445	5	0	352	0	0	0	
B Eagle Creek (Bear Creek)	23	0	0	0	36	20	26	0	107	0	0	0	
B Staney Creek	142	0	43	39	13	4	14	0	31	0	0	0	
B Thorne System Stream and Lake	59	0	16	0	4	1	4	0	143	0	0	0	
B Other Lakes and Streams	59	0	38	128	35	6	8	0	137	0	0	0	
C Lakes and Streams	154	19	1	6	49	1	70	0	66	0	0	0	
D Katlian River (Baranof Island)	47	0	3	0	0	0	0	0	136	0	0	0	
D Nakwasina Sound Streams (Baranof Island)	80	0	0	1	0	0	0	0	155	0	0	0	
D Plotnikof and Rezanof Streams and Lakes (Baranof Island)	38	0	15	1	0	0	13	0	5	0	0	0	
D Saook Bay Streams (Baranof Island)	211	0	2	0	0	7	0	0	543	0	0	0	
D Sitkoh Creek and Lake (Chichagof Island)	32	0	6	2	277	234	4	0	68	0	0	0	
D Other Lakes	114	1	3	0	482	200	0	0	89	0	0	0	
D Other Streams	454	0	46	9	95	198	44	0	1,913	0	0	0	
D Unspecified Streams	86	0	7	0	13	5	9	0	473	0	0	0	
E Admiralty Island Streams (Admiralty Island)	547	0	15	8	22	40	1	0	1,529	0	0	0	
E Chaik Bay Streams (Admiralty Island)	170	0	0	0	9	0	0	0	2,327	0	0	0	
E Other Streams	1,216	1	55	1	40	0	34	0	4,442	0	0	0	
G Mud Bay Creek (Chichagof Island)	86	0	0	0	0	0	0	0	470	0	0	0	
G Trail River (Chichagof Island)	95	0	18	2	0	0	0	0	388	0	0	0	
G Other Streams	121	0	3	2	16	0	0	0	187	0	0	0	
H Situk River (reach unspecified)	1,116	25	977	587	21	1	1,214	0	15	0	0	0	
H Tsiu River	1,214	0	20,126	0	0	0	1	0	2	0	0	0	
H Other Streams	1,378	2	9,113	337	109	17	77	0	261	0	0	0	
Other Lakes and Streams in Southeast	341	0	0	179	7	0	3	0	160	0	0	0	
Total Southeast	8,066	49	30,544	1,302	1,760	1,209	1,527	0	13,999	0	0	0	

Note: Responses with less than 4 businesses are not reported separately, to protect confidentiality of respondent. Data are current as of 09/01/2010.

Appendix I10.–Freshwater logbook angler days and species released by area and site, Southcentral Alaska, 2009.

Area Site	Angler	Salmon			Cutthroat	Rainbow	Steelhead	Lake Trout	Dolly Varden	Grayling	Pike	Sheefish
	Days	Kings	Coho	Sockeye								
J Other East Prince William Sound Streams	117	0	688	0	0	0	0	0	0	0	0	0
J Other Lakes and Streams	28	0	48	2	3	0	0	0	70	0	0	0
K Lakes and Streams	1,689	29	30	4	0	40	0	0	1	0	0	0
M Alexander Lake	34	0	4	1	0	0	0	0	0	0	432	0
M Chulitna River	70	2	11	0	0	161	0	0	0	72	0	0
M Deshka River (Kroto Creek) below weir	284	58	65	0	0	22	0	0	0	5	2	0
M Fish Lake Creek and Fish Lakes (Yentna Drainage)	78	1	4	0	0	1	0	0	0	0	45	0
M Indian Creek (into Yentna near Fish Lakes)	311	6	331	3	0	0	0	0	0	0	0	0
M Lake Creek	4,126	1,025	1,032	263	0	4,764	0	0	1	666	52	0
M Little Willow Creek	81	0	41	0	0	3	0	0	0	6	0	0
M Talachulitna River	1,098	867	1,707	87	0	1,433	0	0	86	352	2	0
M Talkeetna River	1,398	176	284	605	0	46	0	1	277	69	0	0
M Willow Creek	34	0	1	0	0	215	0	0	0	4	0	0
M Yentna River	266	1	319	55	0	4	0	0	0	0	10	0
M Yentna River Drainage (Remainder)	570	321	361	44	0	461	5	57	46	99	0	0
M Other Streams - Chulitna / East Susitna Drainage	192	21	0	0	0	167	0	0	3	138	12	0
M Other Streams - West Susitna Drainage	98	5	37	0	0	8	0	0	0	0	0	0
N Bachatna Creek	87	0	182	0	0	0	0	0	13	0	0	0
N Big River Lakes	3,094	13	1,032	7,810	0	0	0	0	54	0	0	0
N Chuitna River	245	143	273	0	0	12	0	0	1	0	0	0
N Crescent Lake	416	9	107	279	0	87	0	115	1,233	36	0	0
N Crescent River (Grecian River)	105	3	8	9	0	0	0	14	195	0	0	0
N Kamishak River	335	0	820	50	0	157	0	0	2,651	101	0	0
N Kustatan River	996	0	943	35	0	0	0	0	181	0	0	0
N Wolverine Creek (by Big River Lakes)	1,538	0	647	3,013	0	0	0	0	23	0	0	0
N Other Sites (South of North Forelands)	273	0	411	0	0	0	0	0	213	0	0	0
N Other Sites between North Forelands and Susitna Drainage	114	2	279	26	0	35	0	0	35	2	0	0
P Anchor River	70	18	2	0	0	15	14	0	162	0	0	0
P Deep Creek	154	34	11	0	0	1	15	0	91	0	0	0
P Kasilof River above Highway - (logbook only)	102	2	7	1	0	15	29	0	52	0	0	0
P Kasilof River below Highway - (logbook only)	5,757	752	36	7	0	20	137	4	544	4	0	0

-continued-

Appendix I10.-Page 2 of 3.

Area Site	Angler	Salmon			Cutthroat	Rainbow	Steelhead	Lake Trout	Dolly Varden	Grayling	Pike	Sheefish
	Days	King	Coho	Sockeye								
P Kasilof River reach not specified	296	27	0	0	0	1	3	0	24	0	0	0
P Kenai River - Cook Inlet to Soldotna Bridge	21,156	2,038	222	100	0	1,176	0	0	807	0	0	0
P Kenai River - guided, reach not specified	632	19	67	141	0	1,331	0	0	1,414	11	0	0
P Kenai River - Moose River to Skilak Outlet	3,385	87	422	595	0	14,939	0	0	9,784	1	0	0
P Kenai River - Skilak Inlet to Kenai Lake	6,862	5	91	2,699	0	26,084	0	0	31,142	15	0	0
P Kenai River - Soldotna Bridge to Moose R	1,937	187	42	186	0	3,838	0	0	995	45	0	0
P Ptarmigan Creek	11	0	0	0	0	64	0	0	103	0	0	0
P Quartz Creek	66	1	0	82	0	116	0	0	898	0	0	0
P Russian River	119	0	0	101	0	233	0	0	89	0	0	0
P Stocked Lakes	17	0	0	0	0	64	0	0	0	5	0	0
P Other Lakes	146	0	0	0	0	438	0	0	0	871	0	0
P Other Streams	456	273	775	12	0	76	10	0	240	1	0	0
Q Ayakulik River (sometimes called Red River)	506	45	1,736	884	0	0	123	0	2,822	0	0	0
Q Buskin River	39	0	1	0	0	1	0	0	15	0	0	0
Q Dog Salmon Creek (Frazer River)	326	0	51	625	0	9	4	0	96	0	0	0
Q Karluk Lagoon and River below Weir (to .5 m above lagoon)	347	11	49	131	0	0	1	0	165	0	0	0
Q Karluk Lake and River above Weir	551	69	522	802	0	0	743	0	1,481	0	0	0
Q Olds River	41	0	1	0	0	0	0	0	23	0	0	0
Q Pasagshak River	52	0	20	0	0	0	0	0	14	0	0	0
Q Saltery River	870	0	368	224	0	108	1	0	1,900	0	0	0
Q Roadside Lakes	135	0	340	1	0	1	0	0	59	0	0	0
Q Roadside Streams	143	0	17	1	0	0	0	0	428	0	0	0
Q Other Remote Streams	1,141	38	874	1,435	0	210	75	0	5,368	0	0	0
R American Creek	1,212	0	0	128	0	7,652	0	3	16,411	94	0	0
R Becharof System	822	18	2,709	84	0	476	0	0	4,405	1,579	3	0
R Brooks Lake	62	0	0	40	0	601	0	34	4	0	0	0
R Brooks River	664	0	14	436	0	5,559	0	1	38	30	0	0
R Naknek Lake	184	0	9	12	0	839	0	117	1,797	0	45	0
R Naknek River (dwnstream frm Rapids Camp incl trib)	801	63	80	28	0	179	0	0	25	1	4	0
R Naknek River (Rapids Camp upstream to Naknek Lk,incl trib)	1,578	136	165	1,057	0	3,985	0	5	734	98	8	0
R Naknek River and Tributaries	1,544	337	555	513	0	3,961	0	224	4,750	711	43	0
R Ugashik System	216	0	540	71	0	0	0	10	1,298	288	0	0
R Unspecified Streams	203	288	433	27	0	963	7	0	101	27	0	0
R Other Alaska Peninsula / Aleutian Lakes	226	0	183	201	0	34	0	30	250	0	0	0
R Other Alaska Peninsula / Aleutian Streams	2,519	2,407	5,954	295	2	601	0	2	4,348	0	0	0

-continued-



Appendix I10.-Page 3 of 3.

Area Site	Angler Days	Salmon				Cutthroat	Rainbow	Steelhead	Lake Trout	Dolly Varden	Grayling	Pike	Sheefish
		King	Coho	Sockeye									
S Alagnak (Branch) River	3,096	522	1,542	3,693	0	7,334	0	93	590	2,273	22	0	
S Battle River	391	0	0	509	0	3,247	0	4	5	132	0	0	
S Copper River (Lake Iliamna Area)	1,025	0	17	734	0	11,750	0	0	90	9	18	0	
S Funnel Creek	132	0	0	37	0	1,434	0	2	32	0	0	0	
S Gibraltar Lake	20	0	0	68	0	182	0	0	0	0	0	0	
S Gibraltar River	375	0	0	207	0	4,605	0	0	22	9	0	0	
S Iliamna River	295	0	0	146	0	629	0	162	849	6	0	0	
S Kijik Lake	22	0	0	1	0	0	0	11	23	50	0	0	
S Kukaklek River (Big Ku) (into Alagnak)	264	0	0	13	0	2,252	0	13	2	107	17	0	
S Kulik Lake	14	0	0	0	0	73	0	7	0	0	0	0	
S Kulik River	1,071	0	0	52	0	16,831	0	291	21	2	0	0	
S Kvichak River	1,585	40	649	2,017	0	6,999	0	4	93	1,871	26	0	
S Lake Clark	262	0	4	15	0	39	0	104	72	1,105	691	0	
S Lake Iliamna	415	2	51	749	0	1,489	0	1	176	95	0	0	
S Little Kulik (into Nanuktuk Creek)	43	0	0	14	0	415	0	0	211	18	0	0	
S Lower Talarik Creek	101	0	26	0	0	928	0	0	0	33	0	0	
S Moraine Creek	1,186	0	0	602	0	14,402	0	13	55	352	1	0	
S Nanuktuk Creek	95	0	0	10	0	730	0	0	139	2	0	0	
S Newhalen River	84	0	0	0	0	0	0	0	7	243	89	0	
S Nonvianuk Lake	36	0	0	0	0	212	0	42	4	0	0	0	
S Nonvianuk River (into Alagnak)	213	11	7	37	0	1,578	0	218	2	10	0	0	
S Tazimina River	178	0	0	124	0	1,142	0	2	69	699	5	0	
S Other Streams	85	0	47	0	0	561	0	1	0	108	28	0	
T Agulowak River	931	5	4	635	0	3,719	0	0	2,195	1,421	252	0	
T Agulukpak River	372	0	0	155	0	1,511	0	0	404	348	621	0	
T Aleknagik Lake	80	0	27	57	0	2	0	0	131	6	77	0	
T Mulchatna River	144	53	7	57	0	173	0	43	149	614	0	0	
T Nushagak River - Black Point upstream to Sonar Site	2,264	5,862	620	1	0	10	0	0	15	29	0	0	
T Nushagak River - Sonar Site to Outlet of Mulchatna	3,275	5,899	6,934	6	0	104	0	0	120	75	69	0	
T Nushagak River - upstream from mouth of Mulchatna River	100	56	75	4	0	215	0	0	906	161	0	0	
T Nushagak River System (incl. Harris Creek, King Salmon R.)	646	176	74	261	0	1,960	0	0	4,544	2,601	11	0	
T Tikchik-Nuyakuk Lake System	234	38	177	78	0	387	0	326	263	2,347	102	0	
T Togiak River System	1,223	3,703	1,746	90	1	689	0	15	2,383	15	53	0	
T Wood River Lakes System	396	86	398	238	0	591	0	0	342	203	534	0	
T Other Streams	707	330	2,594	144	0	434	0	0	113	1,153	45	0	
Other Lakes and Streams in Southcentral	2	0	0	0	0	9	0	0	0	0	0	0	
Total Southcentral	94,387	26,320	40,960	33,959	6	167,842	1,167	1,969	111,987	21,428	3,319	0	

Note: Responses with less than 4 businesses are not reported separately, to protect confidentiality of respondent. Data are current as of 09/01/2010.

Appendix I11.–Freshwater logbook angler days and species released by area and site, AYK Alaska, 2009.

Area	Site	Angler		Salmon									
		Days	King	Coho	Sockeye	Cutthroat	Rainbow	Steelhead	Lake Trout	Dolly Varden	Grayling	Pike	Sheefish
I	Gulkana River (reach unspecified)	101	48	0	41	0	4	2	0	0	47	0	0
I	Gulkana River (West Fork to Highway)	242	127	0	0	0	7	2	0	0	90	0	0
I	Klutina River	1,152	1,159	0	203	0	22	0	0	84	88	0	0
I	Other Streams	32	6	0	0	0	0	0	41	0	10	0	0
U	Other Lakes	348	0	0	0	0	93	0	2	0	34	90	0
U	Other Streams	942	28	133	0	0	45	0	0	8	5,319	45	5
V	Aniak River	767	492	1,386	80	0	4,519	0	0	4,717	1,959	268	73
V	Goodnews River	783	309	2,329	99	0	777	0	4	3,041	378	1	0
V	Holitna River	334	182	176	15	0	10	0	0	583	448	1,663	423
V	Kanektok River (Quinhagak, Chosen)	2,105	837	3,068	862	0	5,445	0	0	10,026	1,193	0	0
V	Unspecified Streams	134	265	592	34	0	1	0	1	106	204	47	2
V	Unspecified Streams - Kuskokwim Drainage below Aniak	247	10	72	29	0	1,467	0	1	1,348	394	1	0
V	Unspecified Streams (Kuskowim Bay)	170	2	363	36	0	489	0	97	492	166	0	0
W	Other Streams	823	366	5,360	0	0	0	0	0	3,711	2,512	71	0
Y	Lakes and Streams	566	94	918	0	0	0	0	0	177	4,540	4,074	114
	Other Lakes and Streams in AYK	163	0	0	0	0	0	0	0	186	138	6	65
	<b>Total AYK</b>	<b>8,909</b>	<b>3,925</b>	<b>14,397</b>	<b>1,399</b>	<b>0</b>	<b>12,879</b>	<b>4</b>	<b>146</b>	<b>24,479</b>	<b>17,520</b>	<b>6,266</b>	<b>682</b>

Note: Responses with less than 4 businesses are not reported separately, to protect confidentiality of respondent. Data are current as of 09/01/2010.

Appendix I12.–Freshwater logbook angler days and species released by region, statewide, 2009.

Region	Angler		Salmon									
	Days	King	Coho	Sockeye	Cutthroat	Rainbow	Steelhead	Lake Trout	Dolly Varden	Grayling	Pike	Sheefish
Southeast	8,066	49	30,544	1,302	1,760	1,209	1,527	0	13,999	0	0	0
Southcentral	94,387	26,320	40,960	33,959	6	167,842	1,167	1,969	111,987	21,428	3,319	0
Arctic-Yukon-Kuskokwim	8,909	3,925	14,397	1,399	0	12,879	4	146	24,479	17,520	6,266	682
<b>Total</b>	<b>111,362</b>	<b>30,294</b>	<b>85,901</b>	<b>36,660</b>	<b>1,766</b>	<b>181,930</b>	<b>2,698</b>	<b>2,115</b>	<b>150,465</b>	<b>38,948</b>	<b>9,585</b>	<b>682</b>

Note: Data are current as of 09/01/2010.