

Fishery Management Report No. 10-05

**Alaska Salmon Enhancement Program 2009 Annual
Report**

by

Bruce White

March 2010

Alaska Department of Fish and Game

Divisions of Sport Fish and Commercial Fisheries



Symbols and Abbreviations

The following symbols and abbreviations, and others approved for the Système International d'Unités (SI), are used without definition in the following reports by the Divisions of Sport Fish and of Commercial Fisheries: Fishery Manuscripts, Fishery Data Series Reports, Fishery Management Reports, and Special Publications. All others, including deviations from definitions listed below, are noted in the text at first mention, as well as in the titles or footnotes of tables, and in figure or figure captions.

Weights and measures (metric)		General		Measures (fisheries)	
centimeter	cm	Alaska Administrative Code	AAC	fork length	FL
deciliter	dL	all commonly accepted abbreviations	e.g., Mr., Mrs., AM, PM, etc.	mid-eye-to-fork	MEF
gram	g	all commonly accepted professional titles	e.g., Dr., Ph.D., R.N., etc.	mid-eye-to-tail-fork	METF
hectare	ha	at	@	standard length	SL
kilogram	kg	compass directions:		total length	TL
kilometer	km	east	E		
liter	L	north	N	Mathematics, statistics	
meter	m	south	S	<i>all standard mathematical signs, symbols and abbreviations</i>	
milliliter	mL	west	W	alternate hypothesis	H _A
millimeter	mm	copyright	©	base of natural logarithm	<i>e</i>
		corporate suffixes:		catch per unit effort	CPUE
Weights and measures (English)		Company	Co.	coefficient of variation	CV
cubic feet per second	ft ³ /s	Corporation	Corp.	common test statistics	(F, t, χ^2 , etc.)
foot	ft	Incorporated	Inc.	confidence interval	CI
gallon	gal	Limited	Ltd.	correlation coefficient (multiple)	R
inch	in	District of Columbia	D.C.	correlation coefficient (simple)	r
mile	mi	et alii (and others)	et al.	covariance	cov
nautical mile	nmi	et cetera (and so forth)	etc.	degree (angular)	°
ounce	oz	exempli gratia	e.g.	degrees of freedom	df
pound	lb	(for example)		expected value	<i>E</i>
quart	qt	Federal Information Code	FIC	greater than	>
yard	yd	id est (that is)	i.e.	greater than or equal to	≥
		latitude or longitude	lat. or long.	harvest per unit effort	HPUE
Time and temperature		monetary symbols (U.S.)	\$, ¢	less than	<
day	d	months (tables and figures): first three letters	Jan, ..., Dec	less than or equal to	≤
degrees Celsius	°C	registered trademark	®	logarithm (natural)	ln
degrees Fahrenheit	°F	trademark	™	logarithm (base 10)	log
degrees kelvin	K	United States (adjective)	U.S.	logarithm (specify base)	log ₂ etc.
hour	h	United States of America (noun)	USA	minute (angular)	'
minute	min	U.S.C.	United States Code	not significant	NS
second	s	U.S. state	use two-letter abbreviations (e.g., AK, WA)	null hypothesis	H ₀
Physics and chemistry				percent	%
all atomic symbols				probability	P
alternating current	AC			probability of a type I error (rejection of the null hypothesis when true)	α
ampere	A			probability of a type II error (acceptance of the null hypothesis when false)	β
calorie	cal			second (angular)	"
direct current	DC			standard deviation	SD
hertz	Hz			standard error	SE
horsepower	hp			variance	
hydrogen ion activity (negative log of)	pH			population	Var
parts per million	ppm			sample	var
parts per thousand	ppt, ‰				
volts	V				
watts	W				

FISHERY MANAGEMENT REPORT NO. 10-05

**ALASKA SALMON ENHANCEMENT PROGRAM
2009 ANNUAL REPORT**

by

Bruce White,
Alaska Department of Fish and Game, Commercial Fisheries, Juneau

March 2010

Alaska Department of Fish and Game
Division of Sport Fish, Research and Technical Services
333 Raspberry Road, Anchorage, Alaska, 99518-1565

The Fishery Management Reports series was established in 1989 by the Division of Sport Fish for the publication of an overview of management activities and goals in a specific geographic area, and became a joint divisional series in 2004 with the Division of Commercial Fisheries. Fishery Management Reports are intended for fishery and other technical professionals, as well as lay persons. Fishery Management Reports are available through the Alaska State Library and on the Internet: <http://www.sf.adfg.state.ak.us/statewide/divreports/html/intersearch.cfm>. This publication has undergone regional peer review.

*Bruce White,
Alaska Department of Fish and Game, Division of Commercial Fisheries
Headquarters Office, 1255 West 8th Street, P.O. Box 115526, Juneau, Alaska, USA*

This document should be cited as:

White, B. 2010. Alaska salmon enhancement program 2009 annual report. Alaska Department of Fish and Game, Fishery Management Report No. 10-05, Anchorage.

The Alaska Department of Fish and Game (ADF&G) administers all programs and activities free from discrimination based on race, color, national origin, age, sex, religion, marital status, pregnancy, parenthood, or disability. The department administers all programs and activities in compliance with Title VI of the Civil Rights Act of 1964, Section 504 of the Rehabilitation Act of 1973, Title II of the Americans with Disabilities Act (ADA) of 1990, the Age Discrimination Act of 1975, and Title IX of the Education Amendments of 1972.

If you believe you have been discriminated against in any program, activity, or facility please write:

ADF&G ADA Coordinator, P.O. Box 115526, Juneau, AK 99811-5526

U.S. Fish and Wildlife Service, 4401 N. Fairfax Drive, MS 2042, Arlington, VA 22203

Office of Equal Opportunity, U.S. Department of the Interior, 1849 C Street NW MS 5230, Washington DC 20240

The department's ADA Coordinator can be reached via phone at the following numbers:

(VOICE) 907-465-6077, (Statewide Telecommunication Device for the Deaf) 1-800-478-3648, (Juneau TDD) 907-465-3646, or (FAX) 907-465-6078

For information on alternative formats and questions on this publication, please contact:

ADF&G Division of Sport Fish, Research and Technical Services, 333 Raspberry Road, Anchorage AK 99518 (907) 267-2375.

TABLE OF CONTENTS

	Page
LIST OF TABLES.....	i
LIST OF FIGURES.....	ii
ABSTRACT.....	1
INTRODUCTION.....	1
HIGHLIGHTS IN 2009.....	2
FIGURES AND TABLES.....	3

LIST OF TABLES

Table	Page
1. List of acronyms and abbreviations used in this report.....	7
2. Estimated egg takes from Alaska hatcheries, by region, in millions, 2009.....	8
3. Estimated releases from Alaska hatcheries, by region, in millions, 2009.....	8
4. Total returns attributed to Alaska hatcheries and enhancement projects (including common property, cost recovery, broodstock, and escapement), by region, 2009.....	8
5. Alaska common property commercial harvest of enhanced fish, by region, in thousands, 2009.....	9
6. Estimated value of the total Alaska common property commercial harvest (preliminary), by region, in thousands of dollars, 2009.....	10
7. Salmon enhancement program timeline of events.....	11
8. Eggs taken at Alaska hatcheries (transferred eggs are listed with the receiving hatchery), in millions, 2009.....	14
9. Alaskan hatchery releases, in millions, 2009.....	15
10. Estimated returns to Alaska salmon enhancement projects (including common property harvests), by species, as reported by operators, 2009.....	17
11. Projected adult returns, by species, to Alaska enhancement projects in 2010.....	18
12. Summary of anadromous salmon production (all species) from Alaska hatcheries and enhancement projects.....	19
13. Summary of pink salmon production from Alaska hatcheries and enhancement projects.....	19
14. Summary of chum salmon production from Alaska hatcheries and enhancement projects.....	20
15. Summary of coho salmon production from Alaska hatcheries and enhancement projects.....	20
16. Summary of Chinook salmon production from Alaska hatcheries and enhancement projects.....	21
17. Summary of sockeye salmon production from Alaska hatcheries and enhancement projects.....	21
18. Summary of statewide salmon production from private nonprofit hatcheries in Alaska, as reported by operators.....	22
19. Summary of pink salmon production from private nonprofit hatcheries in Alaska, as reported by operators.....	23
20. Summary of chum salmon production from private nonprofit hatcheries in Alaska, as reported by operators.....	24
21. Summary of coho salmon production from private nonprofit hatcheries in Alaska, as reported by operators.....	25
22. Summary of Chinook salmon production from private nonprofit hatcheries in Alaska, as reported by operators.....	26
23. Summary of sockeye salmon production from private nonprofit hatcheries in Alaska, as reported by operators.....	27
24. Alaska commercial salmon fishery harvest average weights and prices (preliminary), 2009.....	28

LIST OF TABLES (Continued)

Table	Page
25. Estimated pink salmon returns to Alaska hatcheries in 2009, including common property harvests, as reported by operators.....	29
26. Estimated chum salmon returns to Alaska hatcheries in 2009, including common property harvests, as reported by operators.....	30
27. Estimated coho salmon returns to Alaska hatcheries in 2009, including common property harvests, as reported by operators.....	31
28. Estimated Chinook salmon returns to Alaska hatcheries in 2009, including common property harvests, as reported by operators.....	32
29. Estimated sockeye salmon returns to Alaska hatcheries in 2009, including common property harvests, as reported by operators.....	33
30. Estimated “other” enhanced returns to Alaska hatcheries in 2009, including common property harvests, as reported by operators.....	34
31. Summary of salmon production in 2009 from Fish Resource Permits issued by the Alaska Department of Fish and Game.....	35
32. Updated pink salmon returns to Alaska hatcheries in 2008, including common property harvest, as reported by operators.....	39
33. Updated chum salmon returns to Alaska hatcheries in 2008, including common property harvests, as reported by operators.....	40
34. Updated coho salmon returns to Alaska hatcheries in 2008, including common property harvests, as reported by operators.....	41
35. Updated Chinook salmon returns to Alaska hatcheries in 2008, including common property harvests, as reported by operators.....	42
36. Updated Sockeye salmon returns to Alaska hatcheries in 2008, including common property harvests, as reported by operators.....	43
37. Updated “other” enhanced fish returns to Alaska hatcheries in 2008, as reported by operators.....	44
38. Actively operated Alaska hatcheries.....	45
39. Permitted capacity of Alaskan private nonprofit hatcheries, in millions of eggs, 2009.....	47

LIST OF FIGURES

Figure	Page
1. Total egg-takes and releases in the Alaska salmon hatchery program, 1977 to 2009.....	4
2. Total returns in the Alaska salmon hatchery program, 1977 to 2009.....	4
3. Alaska salmon hatchery returns by species in 2009.....	5
4. Locations of hatcheries in Alaska.....	6

ABSTRACT

The Alaska Department of Fish and Game oversees and regulates all state and private sector salmon enhancement and rehabilitation projects. Protection of Alaska's natural salmon stocks requires stringent permitting processes. Geneticists, pathologists, and biologists review all projects prior to the issuance of a permit to operate a salmon hatchery, transfer eggs or fish, or release any fish into Alaska waters. Pathology, genetic, coded wire tag, and otolith processing laboratories are maintained to provide information to both Alaska Department of Fish and Game fishery managers, and inseason and technical expertise to the private sector.

In 2009, hatchery operators collected over 1.7 billion eggs and released over 1.4 billion juvenile fish. An estimated 45 million adult salmon from enhancement projects returned. The preliminary total statewide commercial salmon harvest was 162 million fish. There were approximately 148 million salmon harvested in the common property commercial fishery, and an estimated 28 million, or 19%, were produced by the Alaska salmon enhancement program. Enhanced salmon provided an estimated \$62 million or 18% of the exvessel value of the statewide common property commercial harvest. The ocean ranching program employs hundreds of Alaskans in seasonal and fulltime jobs.

Key words: Alaska salmon enhancement program, salmon hatchery, annual report, ocean ranching, private non-profit corporation, Southeast Alaska, Prince William Sound, Cook Inlet, Kodiak, egg take, cost recovery, Chinook, pink, chum, coho, sockeye

INTRODUCTION

Prince William Sound and Southeast Alaska are the regions in the state with the greatest amount of salmon enhancement, and pink and chum salmon are the predominant species produced. The Cook Inlet and Kodiak regions also have salmon enhancement programs. Production levels, in terms of egg takes and releases, have largely remained stable (Figure 1). Enhancement programs have matured and are generally operating at current planned capacities.

The Alaska salmon enhancement program is composed of the following:

- 20 private nonprofit corporation (PNP) owned and operated hatcheries.
- 11 state owned and PNP operated hatcheries.
- 2 state owned and operated hatcheries.
- 3 Federal or Bureau of Indian Affairs hatcheries.
- Streamside incubation projects.

The private nonprofit (PNP) hatchery corporations produce salmon mainly for commercial harvest. The PNPs recoup their operational costs from a special harvest of returning adult fish, called a cost recovery harvest. All other returning adult fish are available for harvest in Alaska's common property fisheries open to the public (sport, personal use, and subsistence). The Alaska Department of Fish and Game (ADF&G) Division of Sport Fish operates two hatcheries, primarily to produce salmonid species intended for both salt and freshwater recreational fisheries at many locations along the coast and in numerous interior lakes. Federal hatcheries in general are lower production facilities that focus on research. Streamside incubation projects enhance stocks of fish inexpensively. Tables 1–39 provide various data for Alaska hatcheries for the years 2008 and 2009.

HIGHLIGHTS IN 2009

- The preliminary statewide commercial salmon harvest was 162 million fish, with an exvessel value estimated at over \$370 million. The Alaska salmon enhancement program produced an estimated 45 million adult salmon (Figure 2). An estimated 28 million enhanced salmon were harvested in the common property commercial fishery, with an estimated preliminary value of \$62 million. The remaining 17 million enhanced salmon were harvested for cost recovery, used for broodstock, or harvested in the personal use/sport/subsistence fishery. Compared to 2008, the preliminary exvessel price paid for pink, chum, coho, sockeye, and Chinook salmon all decreased.
- Statewide, hatchery produced salmon accounted for approximately 18% of the total exvessel value of the common property commercial harvest. Enhanced salmon accounted for 72% of the chum, 21% of the pink, 19% of the Chinook, 16% of the coho, and 5% of sockeye exvessel value.
- Pink and chum salmon dominated the returns of the 5 species of salmon produced (Figure 3). The enhancement program accounted for 59% of the chum, 21% of the pink, 15% of the coho, 16% of the Chinook, and 3% of the sockeye salmon in the statewide common property commercial harvest.

The following is a summary by region. Hatchery locations are shown in Figure 4.

Prince William Sound: The enhancement program accounted for an estimated 84% of the salmon in the common property commercial harvest; 91% of the pink, 91% of the chum, 46% of the sockeye, and 7% of the coho salmon in the common property commercial harvest were hatchery produced. In addition, enhanced salmon contributed an estimated \$26 million, or 62% of the value of the common property commercial harvest.

Southeast: The enhancement program accounted for 15% of the salmon in the common property commercial harvest; 88% of the chum, 23% of the Chinook, 19% of the coho, 7% of the sockeye and 2% of the pink salmon in the common property commercial harvest were enhanced. Additionally, enhanced salmon contributed an estimated \$28 million or 34% of the value of salmon in the common property commercial harvest.

Kodiak: The enhancement program accounted for 25% of the salmon in the common property commercial harvest; 44% of the coho, 26% of the pink, 14% of the sockeye, 10% of the chum salmon in the common property commercial harvest were enhanced. Additionally, enhanced salmon contributed an estimated \$7 million, or 21% of the value of salmon in the common property commercial harvest.

Cook Inlet: The enhancement program accounted for approximately 1% of the sockeye salmon in the common property commercial harvest, and contributed an estimated \$185,000, or 1% of the value of salmon in the common property commercial harvest.

- Statewide, sport anglers harvested an estimated 259,640 hatchery-produced fish representing 8 species (Chinook, coho, pink, chum, and sockeye salmon; rainbow trout, arctic char and arctic grayling).
- In 2010, over 51 million fish are projected to return from Alaska hatchery releases.

FIGURES AND TABLES

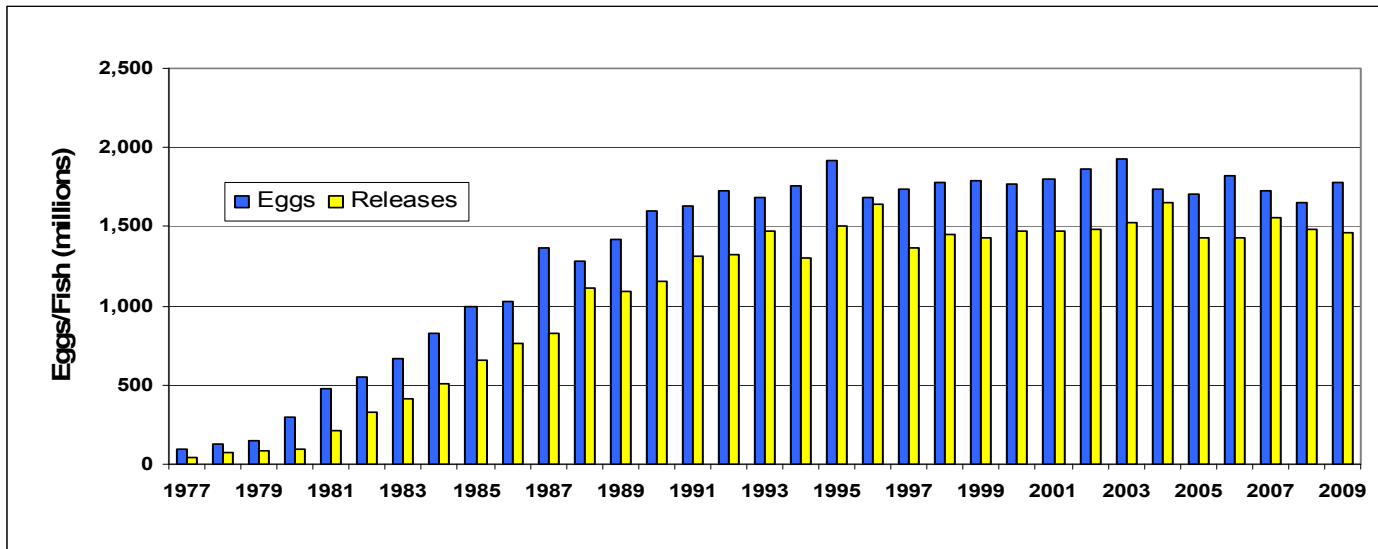


Figure 1.—Total egg-takes and releases in the Alaska salmon hatchery program, 1977 to 2009.

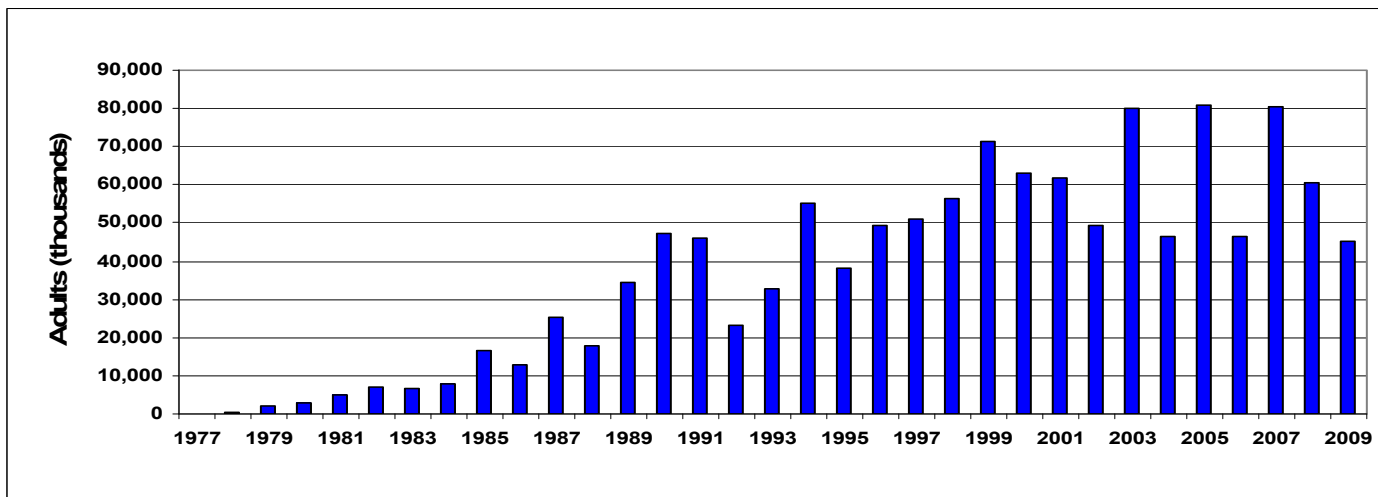


Figure 2.—Total returns in the Alaska salmon hatchery program, 1977 to 2009.

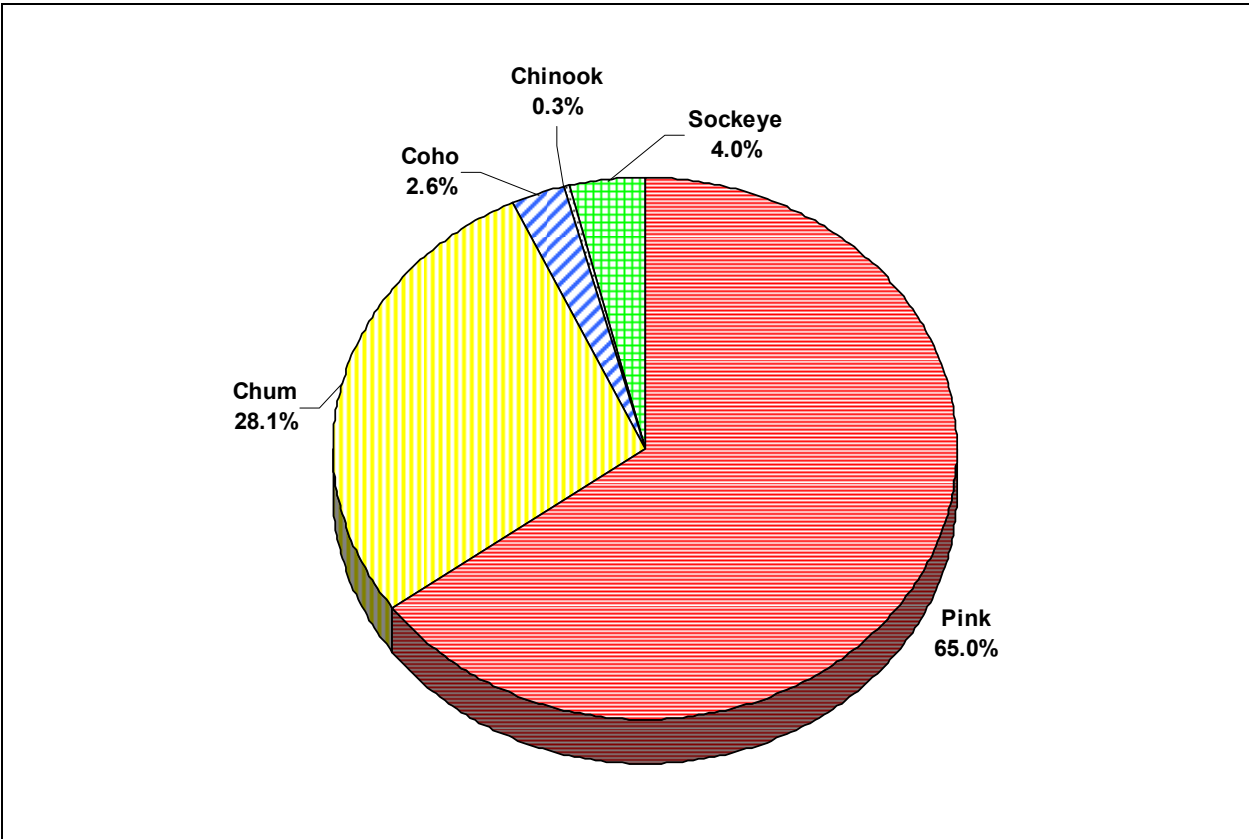


Figure 3.—Alaska salmon hatchery returns by species in 2009.

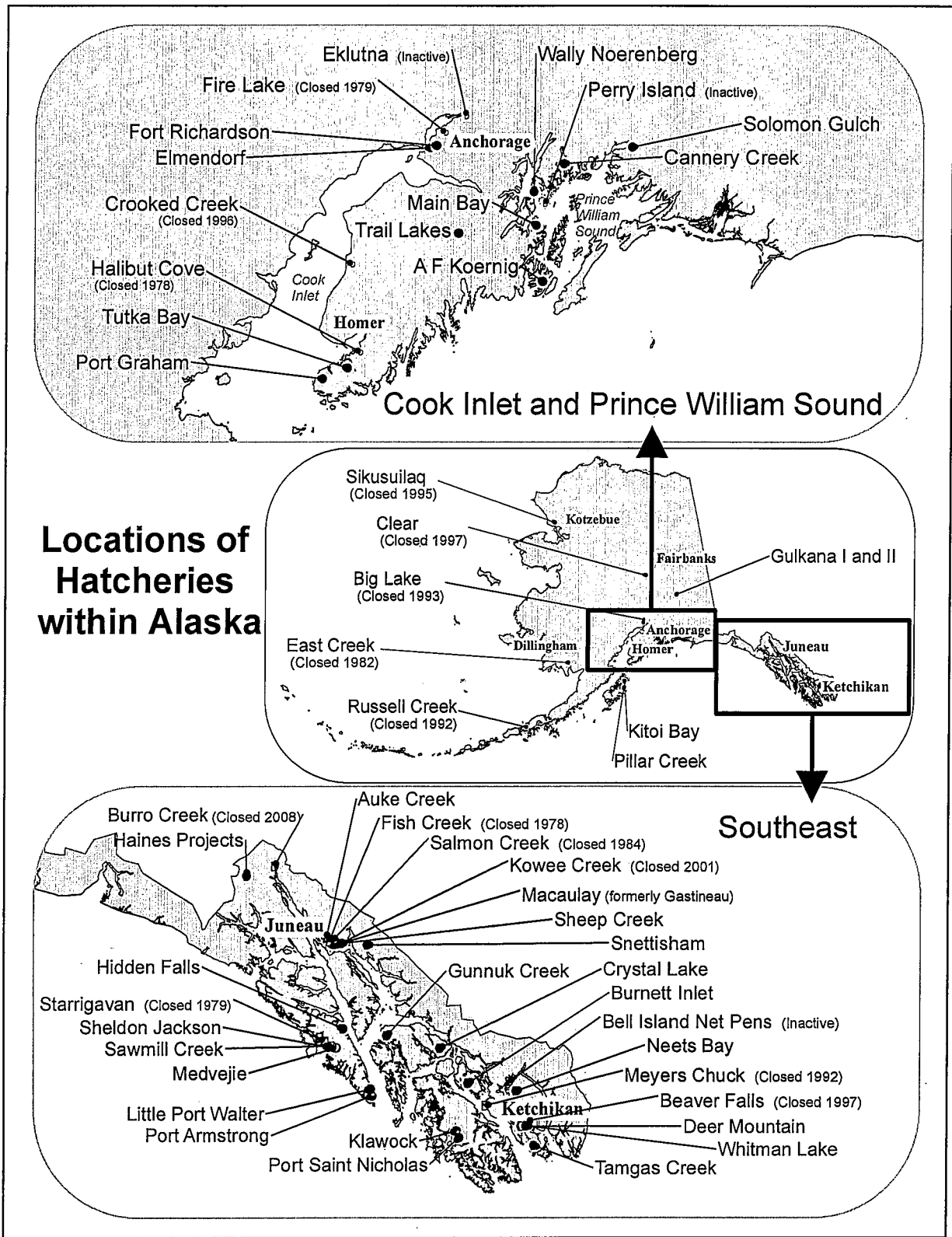


Table 1.–List of hatchery acronyms used in this report.

Acronym	Organization
AKI	Armstrong-Keta, Inc.
CIAA	Cook Inlet Aquaculture Association
DIPAC	Douglas Island Pink and Chum, Inc.
KNFC	Kake Nonprofit Fisheries Corporation
KTHC	Ketchikan Tribal Hatchery Corporation
KRAA	Kodiak Regional Aquaculture Association
NMFS	National Marine Fisheries Service
NSRAA	Northern Southeast Regional Aquaculture Association
PGHC	Port Graham Hatchery Corporation
POWHA	Prince of Wales Hatchery Association
PWSAC	Prince William Sound Aquaculture Corporation
SSRAA	Southern Southeast Regional Aquaculture Association
VFDA	Valdez Fisheries Development Association

Table 2.—Estimated egg takes from Alaska hatcheries, by region, in millions, 2009.

Area	Pink	Chum	Coho	Chinook	Sockeye	Other	Total
Southeast	70.79	529.96	28.32	13.55	18.03		660.65
Prince William Sound	698.30	149.40	6.30		44.94		898.94
Cook Inlet			2.29	2.66	10.60	3.05	18.59
Kodiak/Alaska Peninsula	173.54	25.76	2.52	0.07	5.14	0.09	207.13
Totals ^a	942.63	705.12	39.43	16.28	78.71	3.14	1,785.31

^a Some figures may not total exactly due to rounding.

Table 3.—Estimated releases from Alaska hatcheries, by region, in millions, 2009.

Area	Pink	Chum	Coho	Chinook	Sockeye	Other	Total
Southeast	23.96	404.46	19.65	10.30	15.51	0.01	473.90
Prince William Sound	640.20	125.10	1.75		30.67		797.73
Cook Inlet			1.55	1.21	7.95	1.75	12.46
Kodiak/Alaska Peninsula	153.71	22.17	1.49	0.18	2.67	0.06	180.29
Totals ^a	817.87	551.74	24.44	11.69	56.80	1.82	1,464.37

^a Some figures may not total exactly due to rounding.

Table 4.—Total returns attributed to Alaska hatcheries and enhancement projects (including common property, cost recovery, broodstock, and escapement), by region, 2009.

Area	Pink	Chum	Coho	Chinook	Sockeye	Other	Total
Southeast	1,472,427	9,380,016	832,089	108,244	151,668		11,944,444
Prince William Sound	18,536,046	3,135,625	109,653	2,709	1,084,756		22,868,789
Cook Inlet			50,690	10,584	294,310	57,065	412,649
Kodiak/Alaska Peninsula	9,267,773	153,236	169,286	144	255,285		9,845,724
Totals ^a	29,276,246	12,668,877	1,161,718	121,681	1,786,019	57,065	45,071,606

^a Some figures may not total exactly due to rounding.

Table 5.—Alaska common property commercial harvest of enhanced fish, by region, in thousands, 2009.

Area	Harvest ^a	Chinook	Sockeye	Coho	Pink	Chum	Total
Southeast	Total Commercial Harvest	267	934	2,572	37,687	9,589	51,049
	Total Cost Recovery Harvest	33	83	304	673	2,850	3,943
	Common Property Harvest	234	851	2,268	37,014	6,739	47,106
	Enhanced Fish Harvested	53	57	434	645	5,957	7,147
	% Enhanced in Total CP Harvest ^b	22.7%	6.7%	19.1%	1.7%	88.4%	15.2%
Prince William Sound	Total Commercial Harvest	10	1,918	312	18,319	3,217	23,776
	Total Cost Recovery Harvest		134	18	6,787	462	7,400
	Common Property Harvest	10	1,784	294	11,532	2,755	16,376
	Enhanced Fish Harvested		816	21	10,439	2,516	13,793
	% Enhanced in Total CP Harvest ^b		45.7%	7.3%	90.5%	91.3%	84.2%
Cook Inlet	Total Commercial Harvest	9	2,326	156	1,204	157	3,852
	Total Cost Recovery Harvest		175				175
	Common Property Harvest	9	2,151	156	1,204	157	3,677
	Enhanced Fish Harvested		27				27
	% Enhanced in Total CP Harvest ^b		1.2%				0.7%
Kodiak	Total Commercial Harvest	7	1,727	319	27,614	964	30,631
	Total Cost Recovery Harvest		15	27	2,227	2	2,271
	Common Property Harvest	7	1,712	292	25,387	962	28,360
	Enhanced Fish Harvested		231	127	6,712	99	7,170
	% Enhanced in Total CP Harvest ^b		13.5%	43.7%	26.4%	10.3%	25.3%
Chignik/Aleutian Islands/Alaska Peninsula	Total Commercial Harvest	14	5,347	470	11,162	2,043	19,036
	Enhanced Fish Harvested						
	% Enhanced in Total CP Harvest ^b						
Bristol Bay	Total Commercial Harvest	30	30,899	59	1	1,366	32,355
	Enhanced Fish Harvested						
	% Enhanced in Total CP Harvest ^b						
Arctic-Yukon-Kuskokwim	Total Commercial Harvest	22	170	256	19	603	1,070
	Enhanced Fish Harvested						
	% Enhanced in Total CP Harvest ^b						
Total ^c	Total Commercial Harvest	359	43,321	4,144	96,006	17,939	161,769
	Total Cost Recovery Harvest	33	407	349	9,687	3,313	13,789
	Common Property Harvest	326	42,914	3,795	86,319	14,626	147,980
	Enhanced Fish Harvested	53	1,131	583	17,797	8,573	28,136
	% Enhanced in Total CP Harvest ^b	16.3%	2.6%	15.4%	20.6%	58.6%	19.0%

^a Total commercial harvest includes fish caught by all commercial gear types, which includes cost recovery harvested fish.

^b CP = common property.

^c Some figures may not total exactly due to rounding.

Table 6.—Estimated value of the total Alaska common property commercial harvest (preliminary), by region, in thousands of dollars, 2009.

Area	Chinook	Sockeye	Coho	Pink	Chum	Total
Southeast	\$11,398	\$6,842	\$16,844	\$26,871	\$36,299	\$98,253
Prince William Sound	\$960	\$20,557	\$3,298	\$13,338	\$12,322	\$50,475
Cook Inlet	\$266	\$16,044	\$415	\$750	\$435	\$17,910
Kodiak	\$53	\$10,923	\$962	\$21,034	\$2,668	\$35,640
Chignik/Aleutian Islands/Alaska Peninsula	\$174	\$24,552	\$852	\$6,459	\$3,121	\$35,159
Bristol Bay	\$400	\$127,615	\$162	<\$1	\$1,291	\$129,468
Arctic-Yukon-Kuskokwim	\$226	\$619	\$1,112	\$7	\$1,295	\$3,260
Totals ^a	\$13,477	\$207,152	\$23,645	\$68,459	\$57,431	\$370,163

^a Data from the Alaska Department of Fish and Game website: <http://www.cf.adfg.state.ak.us/geninfo/finfish/salmon/catchval/blusheet/09exvesl.php>
Preliminary figures may not total exactly due to rounding.

Table 7.--Salmon enhancement program timeline of events.

Year	Event	No. of state operated hatcheries	No. private nonprofit (PNP) owned or operated hatcheries	No. of federal hatcheries
1934	Federal research station Little Port Walter constructed			1
1950	Federal hatchery at Auke Creek constructed			2
1953	1 territorial hatchery constructed at Kitoi Bay	1		
1954	1 territorial hatchery constructed at Deer Mountain	2		
1958	1 territorial hatchery constructed at Ft. Richardson	3		
1965	1 state hatchery constructed at Fire Lake	4		
1969	1 state hatchery constructed at Crystal Lake	5		
1971	Fisheries Rehabilitation, Enhancement and Development Division created by Legislature			
1973	2 state hatcheries constructed (Crooked Creek and Gulkana) State enhancement projects at Starrigavan and Halibut Cove started	7		
1974	2 state hatcheries constructed (Beaver Falls and East Creek) Legislature authorizes permits for private nonprofit hatchery operators to salmon ranch	9		
1975	4 PNP permits issued [Perry Island (#1), Port San Juan (#2), Sheldon Jackson (#3), and Sandy Bay (#4)] 2 state hatcheries constructed (Big Lake and Tutka)	11	4	
1976	AS 16.10.375 passed, designating regions for regional planning teams and enhancing salmon 1 state hatchery constructed at Elmendorf 2 PNP permits issued [Burnett Inlet (#5) and Kowee Creek (#6)]	12	6	
1977	1 PNP permit issued to Gunnuk Creek (#7) 2 state hatcheries constructed (Klawock and Russell Creek) State enhancement project at Karluk Lake started	14	7	
1978	1 PNP permit issued to Whitman Lake (#8) 2 state hatcheries constructed (Cannery Creek and Hidden Falls)	16	8	
1979	3 PNP permits issued [Salmon Creek (#9), Meyers Chuck (#10), Sheep Creek (#11)] 1 state hatchery constructed (Snettisham) 1 state hatchery closed (Fire Lake)	17 16	11	
1980	1 PNP permit issued to Burro Creek (#12) 2 state hatcheries constructed (Clear and Main Bay) 1 hatchery at Tamgas Creek constructed (Metlakatla Indian Community/Bureau of Indian Affairs)	18	12	3
1981	1 state hatchery closed (East Creek)	17		

-continued-

Table 7.--Page 2 of 3.

Year	Event	No. of state operated hatcheries	No. private nonprofit (PNP) owned or operated hatcheries	No. of federal hatcheries
	2 state hatcheries constructed (Sikusuilag and Trail Lakes)	19		
	1 PNP hatchery closed & reopened under new management [Salmon Creek #9, now #14]		12	
	3 PNP permits issued [Port Armstrong (#13), Solomon Gulch (#15), Medvejie (#16)]		15	
1982	2 PNP permits issued [Eklutna (#17) and Favorite Bay (#18)]		17	
1983	3 PNP permits issued [Neets Bay (#19), Esther (#20), Crittenden Creek (#22)]		20	
	1 state hatchery completed (Broodstock Development Center)	20		
1984	1 PNP permit issued to Santa Anna (#21)		21	
1985	1 PNP permit issued to Port Camden (#23)		22	
1986	1 PNP permit issued to [Beaver Falls (#24) jointly operated ADF&G/SSRAA]	20	22	
1987	1 PNP permit issued to Gastineau [renamed Macaulay (#25)]		23	
1988	Aquatic Farm Act signed; statute passes allowing contracting of hatchery operations			
	4 state hatcheries contracted to private sector (Cannery Creek, Trail Lakes, Hidden Falls, Kitoi Bay)	16		
	4 PNP permits issued [Cannery Creek (#26), Trail Lakes (#27), Hidden Falls (#28), Kitoi Bay (#29)]		27	
	1 state hatchery constructed (Pillar Creek)	17		
	1 PNP permit rescinded [Sandy Bay PNP (#4)]		26	
	1 PNP permit given up [Salmon Creek (#14)]		25	
1990	CSHB432 becomes law prohibiting finfish farming in Alaska			
	1 PNP permit issued to Bell Island (#30)		26	
1991	5 state hatcheries contracted to private sector [Beaver Falls (#24) , Main Bay, Tutka, Pillar Creek, Gulkana]	12	31	
	3 PNP permits issued [Main Bay (#31), Tutka (#32), Gulkana (#39)]			
	Portions of 6 state hatcheries paid for by private or federal funds			
1992	1 state hatchery closed (Russell Creek)	11		
	2 PNP permits issued [Port Graham (#33), Haines projects (#34)]		33	
	1 PNP permit voided [Meyers Chuck (#10)]		32	
	Fisheries Rehabilitation, Enhancement and Development Division merged with the Commercial Fisheries Division to form the Commercial Fisheries Management and Development Division			
1993	3 state hatcheries transferred from Commercial Fisheries Management and Development to Sport Fish Division (Broodstock Development Center, Elmendorf, and Ft. Richardson)			

-continued-

Table 7.–Page 3 of 3.

Year	Event	No. of state operated hatcheries	No. private nonprofit (PNP) owned or operated hatcheries	No. of federal hatcheries
	2 state hatcheries contracted to private sector (Crooked Creek and Klawock)	9	34	
	1 state hatchery closed (Big Lake)	8		
1994	1 state hatchery conveyed (Deer Mountain)	7	35	
	3 PNP permits issued [Crooked Creek (#35), Klawock (#36), Deer Mountain (#37)]			
	Ft. Richardson Hatchery merged with Broodstock Development Center	6		
1995	1 PNP hatchery voided Klawock (#36), re-issued under new management Klawock (#38)		35	
	1 state hatchery transferred from Commercial Fisheries Management and Development Division to Sport Fish Division (Crystal Lake)			
	1 state hatchery closed (Sikusuilag)	5		
1996	1 state hatchery contracted [Snettisham (#39)]	4	36	
	1 state hatchery transferred from Commercial Fisheries Management and Development Division to Sport Fish Division (Clear)			
	3 PNP permits revoked [Crittenden Creek (#22), Santa Anna (#21), and Favorite Bay (#18)]		33	
1997	1 state hatchery closed (Clear)	3		
	2 state contracted (PNP) hatcheries closed [Beaver Falls (#24), Crooked Creek (#35)]		31	
	1 PNP hatchery closed & reopened under new management [Burnett Inlet (#5, now #40)]		31	
1998	1 PNP hatchery permit issued [Pillar Creek (#41)]			
2000	1 state hatchery contracted to private sector [Crystal Lake Hatchery (PNP permit not issued)]	2	32	
	1 PNP hatchery permit given up [Port Camden (# 23)]		31	
2001	1 PNP hatchery permit given up [Kowee Creek (#6)]		30	
2002	No activity			
2003	No activity			
2004	1 PNP hatchery permit issued [Port St. Nicholas (#43)]		31	
2005	No activity			
2006	No activity			
2007	1 PNP hatchery permit issued [Sawmill Creek (#44)]		32	
2008	1 PNP hatchery permit given up [Burro Creek (#12)]		31	
2009	No activity	2	31 ^a	3

^aThere 11 state owned hatcheries that are contracted to PNP operators. Perry Island and Bell Island are not active.

Table 8.– Eggs taken at Alaska hatcheries (transferred eggs are listed with the receiving hatchery), in millions, 2009.

Area/Operator/Location		Pink	Chum	Coho	Chinook	Sockeye	Other	Total
Southeast								
SSRAA	Whitman Lake		38.87	6.50	1.10			46.47
	Neets Bay		115.93	0.40				116.33
	Burnett Inlet			1.97		0.37		2.35
	Crystal Lake			0.23	1.71			1.94
NSRAA	Hidden Falls		91.27	6.10	2.60			99.97
	Medvejie Creek	0.31	55.96	0.26	4.93			61.47
	Haines projects		2.95					2.95
AKI	Port Armstrong	59.86	30.02	3.49	0.33			93.71
DIPAC	Macaulay		121.60	0.39	0.98			122.97
	Snettisham					17.61		17.61
KTHC	Deer Mountain			0.14	0.15			0.29
KNFC	Gunnuk Creek	9.58	56.01	0.13				65.72
POWHA	Klawock			5.00				5.00
	Port Saint Nicholas				0.50			0.50
SJC	Sheldon Jackson	1.04	9.11	0.10	0.17			10.43
MIC	Tamgas Creek		8.23	3.60	0.45	0.04		12.32
NMFS	Little Port Walter				0.61			0.61
Southeast Totals ^a		70.79	529.96	28.32	13.55	18.03		660.65
Prince William Sound								
PWSAC	Armin F. Koernig	162.00	17.40					179.40
	Wally Noerenberg	148.00	132.00	4.00				284.00
	Cannery Creek	152.00						152.00
	Main Bay					10.10		10.10
	Gulkana					34.84		34.84
VFDA	Solomon Gulch	236.30		2.30				238.60
Prince William Sound Totals ^a		698.30	149.40	6.30		44.94		898.94
Cook Inlet								
CIAA	Trail Lakes			0.55		10.30		10.83
PGH	Port Graham					0.31		0.31
ADF&G	Ship Creek Complex			1.74	2.66		3.05	7.45
Cook Inlet Totals ^a				2.29	2.66	10.60	3.05	18.59
Kodiak								
KRAA	Kitoi Bay	173.54	25.76	2.25		0.57		202.12
	Pillar Creek			0.28	0.07	4.57	0.09	5.00
Kodiak Totals ^a		173.54	25.76	2.52	0.07	5.14	0.09	207.13
Statewide Totals ^a		942.63	705.12	39.43	16.28	78.71	3.14	1,785.31

^a Some figures may not total exactly due to rounding.

Table 9.--Alaskan hatchery releases, in millions, 2009.

Area/Operator/Location		Pink	Chum	Coho	Chinook	Sockeye	Other	Total
Southeast								
SSRAA	Whitman Lake			0.30	0.74			1.04
	Kendrick Bay		20.93					20.93
	Nakat Inlet		9.35	0.30				9.65
	Anita Bay		4.17	0.23				4.40
	Neets Bay			0.61	0.25			0.85
	Bakewell Lake			0.51				0.51
	Neets Bay		68.20	2.15				70.35
	Nakat Inlet		7.95					7.95
	Anita Bay		18.70					18.70
	Burnett Inlet			0.21				0.21
	McDonald Lake			0.28				0.28
	Neck Lake			1.77				1.77
	Crystal Lake			0.20	0.55			0.75
	Neets Bay				0.40			0.40
	Anita Bay				0.55			0.55
NSRAA	Hidden Falls		41.30	3.64	1.20			46.14
	Takatz Bay		40.29					40.29
	Lutak Inlet				0.22			0.22
	Medvejie							
	Deep Inlet		35.69	0.25				35.94
	Bear Cove	0.29	9.84		3.98			14.11
	Haines projects		2.19					2.19
AKI	Port Armstrong	21.44	12.42	3.15	0.55			37.56
DIPAC	Macaulay (Gastineau)		11.87	0.56	0.22			12.65
	Sheep Creek		23.66					23.66
	Amalga Harbor		43.97					43.97
	Boat Harbor		14.25					14.25
	Limestone Inlet		15.22					15.22
	Skagway				0.28			0.28
	Fish Cr/Auke Bay/Twin L				0.39			0.39
	Snettisham					8.57		8.57
	Sweetheart Lake					0.48		0.48
	Tahltn/Tuya Lakes					2.23		2.23
	Tatsamenie Lake					3.87		3.87
KTHC	Deer Mountain			0.05	0.05		0.01	0.11
KNFC	Gunnuk Creek			0.02				0.02
	SE Cove/Kake SHA	1.16	6.44					7.60
SJC	Sheldon Jackson	1.08	1.08	0.15	0.05			2.35
	Deep Inlet (NSRAA coop)		6.75					6.75
MIC	Tamgas Creek		10.20	1.85	0.17	0.08		12.30
POWHA	Klawock			3.73				3.73
	Port Saint Nicholas				0.50			0.50
NMFS	Little Port Walter				0.21			0.21
Southeast Totals ^a		23.96	404.46	19.65	10.30	15.51	0.01	473.90

-continued-

Table 9.—Page 2 of 2.

Area/Operator/Location		Pink	Chum	Coho	Chinook	Sockeye	Other	Total
Prince William Sound								
PWSAC	Armin F. Koernig	145.00	15.10					160.10
	Wally Noerenberg	128.00	71.90	0.11				200.01
	Port Chalmers		38.10					38.10
	Whittier			0.02				0.02
	Cordova			0.08				0.08
	Chenega			0.02				0.02
	Gulkana I and II							
	Paxson Lake					6.00		6.00
	Crosswind Lake					10.0		10.0
	Summit Lake					6.00		6.00
	Cannery Creek	141.00						141.00
	Main Bay					8.67		8.67
VFDA	Solomon Gulch	226.20		1.53				227.73
Prince William Sound Totals ^a		640.20	125.10	1.75		30.67		797.73
Cook Inlet								
PGHC	Port Graham					0.11		0.11
CIAA	Trail Lakes							
	Bear Lake			0.34		2.54		2.88
	Hazel Lake					1.19		1.19
	Hidden Lake					0.91		0.91
	Leisure Lake					1.23		1.23
	Homer Spit			0.04				0.04
	Resurrection Bay					1.68		1.68
	Tutka Bay					0.30		0.30
ADF&G	Ship Creek Complex			1.17	1.21		1.75	4.13
Cook Inlet Totals ^a				1.55	1.21	7.95	1.75	12.46
Kodiak								
KRAA	Kitoi Bay	153.71	22.17	1.03				176.91
	Crescent Lake			0.15				0.15
	Jennifer Lake			0.18				0.18
	Katmai			0.01				0.01
	Little Kitoi					0.52		0.52
	Ruth Lake			0.03				0.03
	Pillar Creek							
	American River				0.05			0.05
	Big Waterfall Lake					0.06		0.06
	Chiniak Lagoon			0.02				0.02
	Crescent Lake					0.20		0.20
	Dark Lake			0.01				0.01
	Hidden Lake					0.25		0.25
	Island Lake			0.02				0.02
	Kodiak Road System						0.06	0.06
	Little Waterfall Lake					0.16		0.16
	Mayflower Lake			0.01				0.01
	Mission Lake			0.01				0.01
	Monaska River				0.08			0.08
	Olds River				0.05			0.05
	Potato Lake			0.01				0.01
	Southern Lake			0.003				0.003
	Spiridon Lake					1.48		1.48
Kodiak Totals ^a		153.71	22.17	1.49	0.18	2.67	0.06	180.29
Statewide Totals ^a		817.87	551.74	24.44	11.69	56.80	1.82	1,464.37

^a Some figures may not total exactly due to rounding.

Table 10.– Estimated returns to Alaska salmon enhancement projects (including common property harvests), by species, as reported by operators, 2009.

Area/Operator/Location		Pink	Chum	Coho	Chinook	Sockeye	Other	Total
Southeast								
SSRAA	Whitman Lake		625,600	99,160	33,811			758,571
	Neets Bay		1,830,590	112,660	15,592			1,958,842
	Burnett Inlet			146,875		5,280		152,155
	Crystal Lake			2,180	1,790			3,970
	Anita Bay				9,150			9,150
NSRAA	Hidden Falls		2,304,969	161,162	6,908			2,473,039
	Medvejie	1,560	712,287	841	24,934			739,622
	Haines projects		22,390					22,390
AKI	Port Armstrong	1,392,791	131,065	113,572	2,491			1,639,919
DIPAC	Macaulay		3,526,484	33,879	7,005			3,567,368
	Snettisham					146,315		146,315
KNFC	Gunnuk Creek	45,720	14,781	488				60,989
SJC	Sheldon Jackson	32,356	83,094	802	447			116,699
POWHA	Klawock			32,254				32,254
MIC	Tamgas Creek		128,756	121,310	3,768	73		253,907
NMFS	Little Port Walter				1,803			1,803
KTHC	Deer Mountain			6,906	545			7,451
Southeast Totals		1,472,427	9,380,016	832,089	108,244	151,668		11,944,444
Prince William Sound								
PWSAC	Armin F. Koernig	10,696,538						10,696,538
	Wally Noerenberg	3,237,364	3,135,625	26,973				6,399,962
	Cannery Creek	3,309,839						3,309,839
	Main Bay					901,057		901,057
	Gulkana					183,699		183,699
ADF&G	Ship Creek Complex				2,709			2,709
VFDA	Solomon Gulch	1,292,305		82,680				1,374,985
Prince William Sound Totals		18,536,046	3,135,625	109,653	2,709	1,084,756		22,868,789
Cook Inlet								
PGHC	Port Graham					36,460		36,460
CIAA	Trail Lakes			1,142		257,850		258,992
ADF&G	Ship Creek Complex			49,548	10,584		57,065	117,197
Cook Inlet Totals				50,690	10,584	294,310	57,065	412,649
Kodiak								
KRAA	Kitoi Bay	9,267,773	153,236	167,686		91,518		9,680,213
	Pillar Creek			1,600	144	163,767		165,511
Kodiak Totals		9,267,773	153,236	169,286	144	255,285		9,845,724
Statewide Totals		29,276,246	12,668,877	1,161,718	121,681	1,786,019	57,065	45,071,606

Table 11.—Projected adult returns, by species, to Alaska enhancement projects in 2010.

Area/Operator/Location		Pink	Chum	Coho	Chinook	Sockeye	Other	Total
Southeast								
SSRAA	Whitman Lake			27,000	16,800			43,800
	Nakat Inlet		261,000	20,000				281,000
	Anita Bay		279,000	20,000	8,700			307,700
	Kendrick Bay		430,000					430,000
	Bakewell Lake			15,000				15,000
	Neets Bay		1,321,000	165,000	14,400			1,500,400
	Burnett Inlet			21,000				21,000
	Neck Lake			85,000				85,000
	Crystal Lake			3,900	1,700			5,600
NSRAA	Hidden Falls		1,625,000	287,100	5,300			1,917,400
	Medvejie Creek		935,000	9,700	23,800			968,500
	Haines projects		16,300					16,300
AKI	Port Armstrong	428,770	249,357	242,432	4,112			924,671
DIPAC	Macaulay							
	Gastineau Channel		824,000	28,000	3,700			855,700
	Amalga Harbor		947,000					947,000
	Boat Harbor		231,000					231,000
	Limestone Inlet		149,000					149,000
	Pullen Creek				1,600			1,600
	Snettisham					198,000		198,000
	Sweetheart Lake					3,400		3,400
	Taku River					^a		
	Stikine River					^a		
KTHC	Deer Mountain			4,593	528		25	5,146
KNFC	Gunnuk Creek	29,030	58,785	741				88,556
	Southeast Cove		66,726					66,726
SJC	Indian River/Deep Inlet	43,171	156,422	5,900	555			206,048
Federal	Little Port Walter				1,210			1,210
MIC	Tamgas		221,000	120,000	3,500	3,000		347,500
POWHA	Klawock			223,697				223,697
	Port Saint Nicholas				6,000			6,000
	Coffman Cove				1,600			1,600
Southeast Totals		500,971	7,770,590	1,279,063	93,505	204,400	25	9,848,554
Prince William Sound								
PWSAC	Armin F. Koernig	6,500,000						6,500,000
	Wally Noerenberg	5,800,000	3,550,000	18,000				9,368,000
	Cannery Creek	6,300,000						6,300,000
	Main Bay					836,000		836,000
	Gulkana					190,000		190,000
VFDA	Solomon Gulch	10,632,000		178,228				10,810,228
Prince William Sound Totals		29,232,000	3,550,000	196,228		1,026,000		34,004,228
Cook Inlet								
CIAA	Trail Lakes							
	Homer Spit			1,500				1,500
	Hazel/Leisure					71,300		71,300
	Kirschner Lake					11,400		11,400
	Hidden Lake					70,100		70,100
	Bear Lake			6,200		188,000		194,200
	Big Lake					92,700		92,700
	Tutka Bay Lagoon					43,200		43,200
ADF&G	Ship Creek Complex ^b			49,322	12,583		53,685	115,590
Cook Inlet Totals				57,022	12,583	476,700	53,685	599,990
Kodiak								
KRAA	Kitoy Bay	5,963,777	273,668	164,449		71,244		6,473,138
	Pillar Creek			1,600	550	164,000		166,150
Kodiak Totals		5,963,777	273,668	166,049	550	235,244		6,639,288
Statewide Totals		35,696,748	11,594,258	1,698,362	106,368	1,942,344	53,710	51,092,060

^a Not available in time for publication.

^b Ship Creek Complex is the combination of Elmendorf Hatchery and Fort Richardson Hatchery.

Table 12.—Summary of anadromous salmon production (all species) from Alaska hatcheries and enhancement projects.

Year	Egg Takes (millions)	Fry Releases (millions)	Total Returns (thousands)	Year	Egg Takes (millions)	Fry Releases (millions)	Total Returns (thousands)
1966	NA	1	0	1988	1,280	1,114	18,527
1967	NA	1	0	1989	1,418	1,087	35,730
1968	NA	1	0	1990	1,603	1,154	48,485
1969	NA	1	0	1991	1,634	1,319	48,853
1970	NA	1	0	1992	1,725	1,323	23,536
1971	NA	0	0	1993	1,685	1,475	33,595
1972	2	2	0	1994	1,758	1,302	55,926
1973	4	2	0	1995	1,913	1,503	37,298
1974	9	3	0	1996	1,688	1,638	50,220
1975	36	11	18	1997	1,732	1,364	50,991
1976	61	13	29	1998	1,773	1,452	56,046
1977	100	41	176	1999	1,847	1,433	72,303
1978	133	74	341	2000	1,734	1,470	63,114
1979	152	87	1,988	2001	1,804	1,476	61,730
1980	292	96	3,053	2002	1,863	1,484	49,322
1981	475	212	4,886	2003	1,926	1,521	79,873
1982	548	331	6,939	2004	1,736	1,648	46,448
1983	668	412	6,560	2005	1,705	1,427	80,973
1984	829	506	7,690	2006	1,823	1,433	46,498
1985	995	659	16,650	2007	1,724	1,560	80,260
1986	1,026	762	12,979	2008	1,657	1,487	60,433
1987	1,369	824	25,505	2009	1,782	1,463	45,015
				Total	44,510	35,173	1,231,989

Table 13.—Summary of pink salmon production from Alaska hatcheries and enhancement projects.

Year	Egg Takes (millions)	Fry Releases (millions)	Total Returns (thousands)	Year	Egg Takes (millions)	Fry Releases (millions)	Total Returns (thousands)
1974	5	0		1992	1,077	797	14,734
1975	9	1	18	1993	1,031	919	20,692
1976	23	4	16	1994	1,076	790	41,305
1977	66	18	175	1995	1,162	921	24,770
1978	79	50	325	1996	929	999	29,575
1979	91	60	1,591	1997	1,064	773	33,957
1980	174	64	2,310	1998	1,119	873	38,651
1981	328	135	4,371	1999	1,085	878	51,973
1982	344	218	6,610	2000	1,074	880	40,395
1983	406	264	5,939	2001	1,101	942	47,247
1984	442	332	5,298	2002	1,168	938	30,835
1985	604	366	14,158	2003	1,108	962	59,773
1986	511	484	9,044	2004	960	965	30,564
1987	840	443	21,961	2005	949	808	69,076
1988	736	730	13,868	2006	964	809	26,702
1989	975	675	31,764	2007	952	851	64,308
1990	1,014	811	41,208	2008	908	823	43,411
1991	998	862	39,777	2009	943	818	29,276

Table 14.—Summary of chum salmon production from Alaska hatcheries and enhancement projects.

Year	Egg Takes (millions)	Fry Releases (millions)	Total Returns (thousands)	Year	Egg Takes (millions)	Releases (millions)	Total Returns (thousands)
1974	1	0		1992	510	428	3,089
1975	5	1		1993	496	469	6,709
1976	7	2		1994	529	407	8,997
1977	8	3	1	1995	596	473	9,540
1978	12	4	3	1996	590	535	16,353
1979	24	7	6	1997	524	485	12,768
1980	74	13	16	1998	517	479	13,409
1981	87	46	53	1999	636	461	15,080
1982	126	63	153	2000	541	508	18,818
1983	170	86	301	2001	568	467	9,167
1984	269	108	1,809	2002	549	451	12,565
1985	244	201	1,404	2003	675	466	13,695
1986	374	182	1,938	2004	665	578	10,932
1987	380	298	2,005	2005	627	549	7,553
1988	392	288	2,650	2006	714	539	15,715
1989	293	310	1,347	2007	639	609	12,338
1990	450	241	2,039	2008	611	567	13,655
1991	480	365	2,181	2009	705	552	12,669

Table 15.—Summary of coho salmon production from Alaska hatcheries and enhancement projects.

Year	Egg Takes (millions)	Fry Releases (millions)	Total Returns (thousands)	Year	Egg Takes (millions)	Fry Releases (millions)	Total Returns (thousands)
1966	NA	1		1988	28	19	284
1967	NA	1		1989	23	16	505
1968	NA	1		1990	22	18	955
1969	NA	1		1991	23	14	1,289
1970	NA	1		1992	21	14	1,396
1971	NA	0		1993	25	15	1,022
1972	2	2		1994	28	18	1,320
1973	2	2		1995	27	21	1,312
1974	1	2		1996	30	21	1,368
1975	7	4	0	1997	36	23	1,081
1976	5	3	13	1998	29	21	1,393
1977	5	5		1999	23	20	1,542
1978	5	3	0	2000	33	15	1,655
1979	4	3	71	2001	32	19	1,799
1980	4	2	21	2002	35	20	2,120
1981	8	3	55	2003	35	19	1,495
1982	16	3	108	2004	33	23	1,203
1983	17	9	96	2005	33	22	1,444
1984	21	11	179	2006	36	22	1,355
1985	20	15	308	2007	33	26	1,130
1986	24	13	660	2008	41	25	1,449
1987	26	15	453	2009	39	24	1,162

Table 16.—Summary of Chinook salmon production from Alaska hatcheries and enhancement projects.

Year	Egg Takes (millions)	Fry Releases (millions)	Total Returns (thousands)	Year	Egg Takes (millions)	Fry Releases (millions)	Total Returns (thousands)
1966	NA	0		1988	18	9	75
1967	NA	1		1989	15	8	78
1968	NA	0		1990	17	10	118
1969	NA	0		1991	20	7	174
1970	NA	0		1992	13	10	132
1971	NA	0		1993	12	12	112
1972	NA	0		1994	13	10	127
1973	NA	0		1995	14	7	169
1974	0	1		1996	12	7	165
1975	1	0		1997	12	7	150
1976	1	0		1998	13	7	104
1977	3	1		1999	12	8	114
1978	2	1	0	2000	12	8	174
1979	2	1	3	2001	14	9	188
1980	3	1	7	2002	18	8	157
1981	1	1	5	2003	14	10	159
1982	3	1	12	2004	16	10	194
1983	7	2	13	2005	15	10	139
1984	10	4	21	2006	17	10	108
1985	19	4	26	2007	17	11	137
1986	16	6	40	2008	18	11	140
1987	17	8	94	2009	16	12	122

Table 17.—Summary of sockeye salmon production from Alaska hatcheries and enhancement projects.

Year	Egg Takes (millions)	Fry Releases (millions)	Total Returns (thousands)	Year	Egg Takes (millions)	Fry Releases (millions)	Total Returns (thousands)
1972	NA	0		1991	113	70	5,432
1973	2	0		1992	104	74	4,185
1974	2	1		1993	122	61	5,060
1975	14	5		1994	112	77	4,177
1976	24	2		1995	115	81	1,506
1977	19	14	0	1996	127	75	2,760
1978	35	16	13	1997	97	75	3,036
1979	30	17	318	1998	95	72	2,488
1980	38	15	700	1999	91	66	3,595
1981	51	28	401	2000	73	60	2,073
1982	59	45	56	2001	89	39	3,328
1983	68	53	210	2002	92	67	3,645
1984	86	52	382	2003	94	64	4,750
1985	108	73	754	2004	62	71	3,554
1986	101	77	1,296	2005	81	38	2,761
1987	107	60	992	2006	93	53	2,618
1988	107	69	1,651	2007	83	63	2,347
1989	112	77	2,037	2008	78	61	1,777
1990	100	74	4,165	2009	79	57	1,786

Table 18.—Summary of statewide salmon production from private nonprofit hatcheries in Alaska, as reported by operators.

Year	Egg take (millions)	Fry release (millions)	Total return (thousands)	Cost recovery (thousands)
1975	8			
1976	17	4		
1977	37	12	160	109
1978	37	27	161	215
1979	54	29	357	253
1980	126	36	1,506	346
1981	224	102	2,564	856
1982	234	127	5,341	1,364
1983	261	170	4,286	886
1984	373	218	4,764	1,043
1985	470	302	8,106	1,854
1986	522	381	7,904	1,212
1987	868	461	19,097	4,184
1988	1,046	820	14,344	2,498
1989	1,109	860	24,045	15,012
1990	1,249	925	42,405	10,388
1991	1,326	1,087	40,265	13,170
1992	1,428	1,075	18,175	7,255
1993	1,613	1,426	27,781	4,848
1994	1,726	1,268	52,023	15,906
1995	1,877	1,174	37,593	9,554
1996	1,735	1,632	48,946	14,657
1997	1,713	1,349	50,629	19,352
1998	1,759	1,444	56,154	15,651
1999	1,778	1,428	71,140	22,608
2000	1,750	1,469	62,743	19,007
2001	1,779	1,473	59,885	18,398
2002	1,849	1,478	49,061	19,005
2003	1,919	1,490	79,897	22,937
2004	1,727	1,574	46,226	21,986
2005	1,688	1,417	80,741	21,246
2006	1,805	1,421	46,275	18,922
2007	1,707	1,549	79,985	19,580
2008	1,635	1,475	60,186	12,882
2009	1,765	1,448	44,696	13,756

Table 19.—Summary of pink salmon production from private nonprofit hatcheries in Alaska, as reported by operators.

Year	Egg take (millions)	Fry release (millions)	Total return (thousands)	Cost recovery (thousands)
1975	8			
1976	16	4		
1977	35	12	160	109
1978	35	26	160	215
1979	47	28	356	253
1980	98	32	1,505	346
1981	188	79	2,491	838
1982	185	103	5,253	1,359
1983	186	127	4,087	843
1984	242	159	3,638	583
1985	340	199	7,405	1,699
1986	325	272	6,768	949
1987	618	299	17,964	3,625
1988	645	626	12,258	2,008
1989	806	553	22,561	14,529
1990	789	685	39,920	9,846
1991	831	704	37,081	12,367
1992	883	648	13,200	5,977
1993	1,029	920	19,844	2,740
1994	1,075	787	40,939	13,384
1995	1,162	621	25,415	6,819
1996	929	999	29,298	9,401
1997	1,064	772	33,956	14,027
1998	1,121	873	38,652	10,693
1999	1,092	878	51,973	17,623
2000	1,074	880	40,395	12,381
2001	1,097	942	47,247	14,564
2002	1,168	938	30,835	12,916
2003	1,108	962	59,773	15,376
2004	960	965	30,564	17,040
2005	949	808	69,076	18,099
2006	964	809	26,702	12,620
2007	952	851	64,308	14,383
2008	908	823	43,411	8,926
2009	943	818	29,276	9,687

Table 20.—Summary of chum salmon production from private nonprofit hatcheries in Alaska, as reported by operators.

Year	Egg take (millions)	Fry release (millions)	Total return (thousands)	Cost recovery (thousands)
1975	<1	<1		
1976	<1	<1		
1977	2	<1		
1978	2	1	1	0
1979	7	1	<1	0
1980	27	3	2	0
1981	32	22	21	12
1982	46	24	22	<1
1983	69	42	127	35
1984	122	55	1,001	437
1985	119	98	525	123
1986	181	100	780	189
1987	235	150	955	499
1988	370	186	1,835	470
1989	267	287	1,102	298
1990	425	217	1,633	370
1991	442	359	1,959	404
1992	495	394	3,079	706
1993	458	452	6,387	1,782
1994	520	402	8,783	2,128
1995	590	463	9,800	2,252
1996	651	534	16,205	4,782
1997	517	477	13,250	4,643
1998	513	479	13,423	4,355
1999	568	460	15,072	4,361
2000	572	508	18,698	6,060
2001	560	468	7,620	3,104
2002	547	450	12,561	5,074
2003	675	436	13,695	6,514
2004	660	574	10,905	4,102
2005	617	544	7,524	2,428
2006	704	532	15,621	5,454
2007	630	603	12,222	4,529
2008	601	560	13,541	3,421
2009	697	542	12,540	3,313

Table 21.—Summary of coho salmon production from private nonprofit hatcheries in Alaska, as reported by operators.

Year	Egg take (millions)	Juvenile release (millions)	Total return (thousands)	Cost recovery (thousands)
1975	<1			
1976	<1			
1977	<1	<1		
1978	1	<1	<1	
1979	1	<1	<1	
1980	1	1	<1	
1981	3	1	52	6
1982	3	1	62	2
1983	6	2	72	7
1984	6	3	121	22
1985	4	4	168	30
1986	8	4	345	73
1987	9	5	169	58
1988	13	5	122	11
1989	14	9	305	89
1990	14	11	692	141
1991	16	12	1,001	368
1992	17	10	1,070	378
1993	19	11	657	144
1994	24	13	1,189	240
1995	22	14	966	319
1996	28	20	1,041	253
1997	26	18	921	258
1998	23	17	1,124	342
1999	20	18	1,452	372
2000	22	15	1,456	320
2001	23	17	1,561	433
2002	31	17	1,875	766
2003	32	22	1,433	395
2004	29	23	1,043	258
2005	29	19	1,274	289
2006	32	19	1,260	276
2007	29	22	1,000	189
2008	35	22	1,336	350
2009	34	21	991	317

Table 22.—Summary of Chinook salmon production from private nonprofit hatcheries in Alaska, as reported by operators.

Year	Egg take (millions)	Juvenile release (millions)	Total return (thousands)	Cost recovery (thousands)
1980	<1			
1981	<1			
1982	<1	<1	4	3
1983	1	<1	1	0
1984	3	<1	4	1
1985	6	1	8	2
1986	7	4	11	1
1987	5	6	9	2
1988	7	2	23	9
1989	7	3	37	18
1990	9	5	60	22
1991	10	4	70	26
1992	7	6	42	23
1993	5	7	54	26
1994	6	6	58	15
1995	6	4	98	28
1996	8	4	97	34
1997	8	5	85	32
1998	7	5	76	19
1999	7	5	77	16
2000	8	7	117	37
2001	10	7	130	49
2002	10	6	122	33
2003	10	6	138	48
2004	11	7	164	62
2005	12	7	106	26
2006	13	8	76	15
2007	13	9	108	28
2008	14	9	117	39
2009	13	10	103	32

Table 23.—Summary of sockeye salmon production from private nonprofit hatcheries in Alaska, as reported by operators.

Year	Egg take (millions)	Juvenile release (millions)	Total return (thousands)	Cost recovery (thousands)
1985	<1			
1986	1	<1		
1987	2	1		
1988	11	1	66	0
1989	15	8	40	79
1990	12	8	101	9
1991	27	8	154	5
1992	26	16	784	171
1993	103	37	839	156
1994	100	60	1,054	139
1995	97	72	1,313	136
1996	119	75	2,306	187
1997	98	77	2,417	392
1998	95	71	2,880	242
1999	91	67	2,566	236
2000	74	60	2,076	209
2001	89	39	3,327	248
2002	93	67	3,668	216
2003	94	64	4,832	604
2004	61	72	3,550	524
2005	81	39	2,761	404
2006	92	53	2,616	557
2007	83	63	2,347	451
2008	78	61	1,781	146
2009	79	57	1,786	407

Table 24.—Alaska commercial salmon fishery harvest average weights and prices (preliminary), 2009.

Area/Species	Harvest Average ^a	
	Weight (lb)	Price/lb.
Cook Inlet		
Chinook	16.94	\$1.77
Sockeye	6.00	\$1.15
Coho	6.50	\$0.41
Pink	3.12	\$0.20
Chum	7.49	\$0.37
Kodiak		
Chinook	9.17	\$0.80
Sockeye	5.70	\$1.11
Coho	6.32	\$0.48
Pink	3.31	\$0.23
Chum	7.69	\$0.36
Prince William Sound		
Chinook	18.60	\$5.14
Sockeye	6.21	\$1.72
Coho	8.62	\$1.23
Pink	3.01	\$0.24
Chum	7.51	\$0.51
Southeast		
Chinook	14.00	\$3.05
Sockeye	5.92	\$1.24
Coho	6.37	\$1.03
Pink	3.16	\$0.23
Chum	7.38	\$0.51

^a Data from the Alaska Department of Fish and Game website:

<http://www.cf.adfg.state.ak.us/geninfo/finfish/salmon/catchval/blusheet/09exvesl.php>>

Table 25.— Estimated pink salmon returns to Alaska hatcheries in 2009, including common property harvests, as reported by operators.

Area/Operator/Location	Common Property Harvest					Personal Use/ Subsistence	Other	Brood	Cost Recovery Harvest	Escapement	Total
	Seine	Gillnet	Troll	Sport							
Southeast											
AKI	Port Armstrong	612,828				45,000	79,359	655,604			1,392,791
KNFC	Gunnuk Creek	17,991				6,613	20,491	625			45,720
SJC	Sitka	14,560					1,096	16,700			32,356
NSRAA	Medvejie						760		800		1,560
Southeast Totals		645,379				51,613	101,706	672,929	800		1,472,427
Prince William Sound											
PWSAC	Armin F. Koernig	6,272,211	10,926			19,500	232,620	4,161,281			10,696,538
	Wally Noerenberg	1,481,061	259,502			53,000	189,345	1,254,456			3,237,364
	Cannery Creek	2,356,512				95,000	245,864	612,463			3,309,839
VFDA	Solomon Gulch	58,739			30,000		416,158	758,661	28,747		1,292,305
Prince William Sound Totals		10,168,523	270,428		30,000	167,500	1,083,987	6,786,861	28,747		18,536,046
Kodiak											
KRAA	Kittoi Bay	6,712,309				371	40,894	258,943	2,227,256	28,000	9,267,773
Kodiak Totals		6,712,309				371	40,894	258,943	2,227,256	28,000	9,267,773
Statewide Totals		17,526,211	270,428		30,000	371	260,007	1,444,636	9,687,046	57,547	29,276,246

Table 26.—Estimated chum salmon returns to Alaska hatcheries in 2009, including common property harvests, as reported by operators.

Area/Operator/Location	Common Property Harvest							Cost Recovery Harvest	Escapement	Total
	Seine	Gillnet	Troll	Sport	Personal Use/Subsistence	Other	Brood			
Southeast										
SSRAA	Whitman Lake									
	Nakat Inlet – summer	18,100	219,000							237,100
	Kendrick Bay – summer	355,700	32,800							388,500
	Neets Bay – summer	195,870	100,350	206,100			144,200	639,900		1,286,420
	Anita Bay – summer	136,500	167,500	5,580						309,580
	Neets Bay – fall	21,100	40,500	340			44,370	121,130		227,440
	Nakat Inlet – fall	600	6,550							7,150
NSRAA	Medvejie	315,404	108,360	98,574		1,899	44,754	143,025	271	712,287
	Hidden Falls	1,850,398	39,515	62		1,500	110,109	303,385		2,304,969
	Haines projects		8,956				2,435		10,999	22,390
DIPAC	Macaulay (was Gastineau)	23,626	770,429		1,800	25,000	93,759	521,096		1,435,710
	Amalga Harbor	17,207	389,849					1,066,597		1,473,653
	Limestone Inlet	4,638	183,786							188,424
	Boat Harbor	18,993	409,704							428,697
KNFC	Gunnuk Creek									
	Kake SHA	3,216		169	5	3,661	4,801			11,852
	Southeast Cove	795		42		2,000	92			2,929
AKI	Port Armstrong	26,213				4,103	62,999	37,750		131,065
SJC	Sitka	37,227	11,492	10,454		201	6,538	17,153	29	83,094
MIC	Tamgas Creek	27,500	94,000				7,256			128,756
Southeast Totals		3,053,087	2,582,791	321,321	1,805	38,364	521,313	2,850,036	11,299	9,380,016
Prince William Sound										
PWSAC	Wally Noerenberg									
	Lake Bay	26,544	1,593,855		1,000	5,000	151,835	461,511		2,239,745
	Port Chalmers		666,047							666,047
	Sawmill Bay	229,833								229,833
Prince William Sound Totals		256,377	2,259,902		1,000	5,000	151,835	461,511		3,135,625
Kodiak										
KRAA	Kitoi Bay	99,220				4,385	43,852	1,779	4,000	153,236
Kodiak Totals		99,220				4,385	43,852	1,779	4,000	153,236
Statewide Totals		3,408,684	4,842,693	321,321	2,805	47,749	717,000	3,313,326	15,299	12,668,877

Table 27.—Estimated coho salmon returns to Alaska hatcheries in 2009, including common property harvests, as reported by operators.

Area/Operator/Location	Common Property Harvest					Personal Use/Subsistence	Other	Brood	Cost Recovery		Total
	Seine	Gillnet	Troll	Sport	Harvest				Escapement		
Southeast											
SSRAA	Whitman Lake	2,060	3,600	14,690	1,170			5,000	14,985		41,505
	Anita Bay	450	15,010	9,530	400						25,390
	Bakewell Lake	1,040	1,100	6,960	645		1,420				11,165
	Nakat	830	9,000	10,900	370						21,100
	Neets Bay	3,470	19,880	54,310	6,000		3,450	550	25,000		112,660
	Burnett Inlet	1,380	10,650	4,100	210		4,500	2,205	12,000		35,045
	Neck Lake	2,230	45,700	11,100	10,100		1,200		41,500		111,830
	Crystal Lake Hatchery	30	240	650	5		1,002	253			2,180
NSRAA	Medvejie	336	327	123	29		20		6		841
	Hidden Falls	3,371	527	35,831	2,778		4,243	7,415	56,003		110,168
	Deer Lake	230		20,400	1,107		2,670		26,587		50,994
AKI	Port Armstrong	259	93	37,668	342	32	5,317	5,681	64,180		113,572
KNFC	Gunnuk Creek			112	100	26	60	90		100	488
DIPAC	Macaulay	491	230	5,607	4,052		1,228		22,271		33,879
KTHC	Deer Mountain	2,002	669	910	827	2	1,246	300	250	700	6,906
SJC	Sitka			361	100		42	188	111		802
POWHA	Klawock Hatchery	2,645	56	5,979	1,965		3,927	3,663	9,407	4,612	32,254
MIC	Tamgas Creek	9,500	39,000	38,250	650		600	1,946	31,364		121,310
Southeast Totals		30,324	146,082	257,481	30,850	60	30,925	27,291	303,664	5,412	832,089
Prince William Sound											
PWSAC	Wally Noerenberg	1,698	18,511		1,200			2,064			23,473
	Cordova/Whittier/Chenega				3,500						3,500
VFDA	Solomon Gulch	1,221			60,000		50	3,079	17,830	500	82,680
Prince William Sound Totals		2,919	18,511		64,700		50	5,143	17,830	500	109,653
Cook Inlet											
CIAA	Trail Lakes						420	257		465	1,142
ADF&G	Ship Creek Complex				3,878					278	4,156
	Bird Creek				28,262			226			28,488
	Homer Spit				4,278						4,278
	Resurrection Bay				6,382			648		1,268	8,298
	Eklutna tailrace				4,328						4,328
Cook Inlet Totals					47,128		420	1,131		2,011	50,690
Kodiak											
KRAA	Kitoy Bay	127,486			85	2,681	7,004	3,354	27,076		167,686
	Pillar Creek- road system				1,600						1,600
Kodiak Totals		127,486			1,685	2,681	7,004	3,354	27,076		169,286
Statewide Totals		160,729	164,593	257,481	144,363	2,741	38,399	36,919	348,570	7,923	1,161,718

Table 28.—Estimated Chinook salmon returns to Alaska hatcheries in 2009, including common property harvests, as reported by operators.

Area/Operator/Location	Common Property Harvest						Brood	Cost Recovery Harvest	Escapement	Total	
	Seine	Gillnet	Troll	Sport	Personal Use/ Subsistence	Other					
Southeast											
SSRAA	Whitman Lake	130	350	4,340	1,430		1,500	12,940		20,690	
	Neets Bay	4,086	2,250	1,625	250			4,910		13,121	
	Crystal Lake Hatchery		190	760	110	30	700			1,790	
	Anita Bay	3,155	4,640	1,235	120					9,150	
	Neets Bay	3,982	2,241	2,764	405			6,200		15,592	
NSRAA	Medvejie	1,941	3,612	6,335	1,056	76	4,101	2,463	5,350	24,934	
	Hidden Falls	3,082	114	1,446	463		354	1,290	159	6,908	
AKI	Port Armstrong		10	619	17		835	388	622	2,491	
DIPAC	Macaulay	20	888	659	2,404			1,112	1,346	6,429	
	Skagway Site		14	38	201		26	297		576	
KTHC	Deer Mountain Hatchery	3	4	170	170		4	94		100	
SJC	Sheldon Jackson			201			234	12		447	
MIC	Tamgas Creek	200	300	947	600		125	146	1,450	3,768	
NOAA	Little Port Walter	20	13	711	55		154	850		1,803	
Southeast Totals		16,619	14,626	21,850	7,281	76	5,863	8,852	32,977	100	108,244
Prince William Sound											
ADF&G	Ship Creek Complex										
	Valdez				1,663					1,663	
	Whittier				1,046					1,046	
Prince William Sound Totals					2,709					2,709	
Cook Inlet											
ADF&G	Ship Creek Complex										
	Crooked Creek				956			146		116	
	Deception Creek						50	118		168	
	Eklutna tailrace				700					700	
	Fleming Spit				76					76	
	Kachemak Bay				4,278					4,278	
	Ninilchik River							96		74	
	Ship Creek				3,058			366		550	
Cook Inlet Totals					9,068		50	726		740	10,584
Kodiak											
KRAA	Pillar Creek				35		5	104			144
Kodiak Totals					35		5	104			144
Statewide Totals		16,619	14,626	21,850	19,093	76	5,918	9,682	32,977	840	121,681

Table 29.—Estimated sockeye salmon returns to Alaska hatcheries in 2009, including common property harvests, as reported by operators.

Area/Operator/Location	Common Property Harvest						Brood	Cost Recovery Harvest	Escapement	Total
	Seine	Gillnet	Troll	Sport	Personal Use/ Subsistence	Other				
Southeast										
SSRAA	Burnett Inlet		2,720				200			2,920
	Neck Lake		1,730				630			2,360
DIPAC	Snettisham	5,643	17,181		194		979	6,217	83,420	113,634
	Sweetheart Lake	292	1,100			3,000				4,392
	Stikine River		27,888							27,888
	Taku River		401							401
MIC	Tamgas Creek							23	50	73
Southeast Totals		5,935	51,020		194	3,000	1,809	6,240	83,470	151,668
Prince William Sound										
PWSAC	Main Bay	63,802	692,180		700		2,000	8,815	133,560	901,057
	Gulkana I and II									
	Paxson Lake		20,517				27,504	4,134	500	52,655
	Crosswind Lake		38,619				51,770	14,655	24,015	129,059
	Summit Lake		803				1,077		105	1,985
Prince William Sound Totals		63,802	752,119		700		82,351	27,604	133,560	1,084,756
Cook Inlet										
CIAA	Trail Lakes									
	Bear Lake				5,890		923	3,341	136,128	9,478
	Big Lake		9,900			3,200	77			30,100
	Hidden Lake		7,350		2,010	1,530		2,953		4,860
	Leisure/Hazel Lakes				650	4,900	80		205	5,835
	Tutka Bay						503	3,067	11,584	15,154
	Kirschner Lake						350		18,771	19,121
PGH	Port Graham		9,548			700		240	8,292	17,680
Cook Inlet Totals			26,798		8,550	10,330	1,933	9,601	174,980	62,118
Kodiak										
KRAA	Kitoy Bay	67,105			250	6			15,195	8,962
	Pillar Creek									
	Spiridon Lake	104,233	50,792							155,025
	Foul Bay	6,508								6,508
	Waterfall Bay	2,234								2,234
Kodiak Totals		180,080	50,792		250	6			15,195	8,962
Statewide Totals		249,817	880,729		9,694	13,336	86,093	43,445	407,205	95,700

Table 30.—Estimated “other” enhanced returns to Alaska hatcheries in 2009, including common property harvests, as reported by operators.

Area/Operator/Location	Species	Commercial	Sport Catch	Personal Use/ Subsistence	Other	Brood	Cost Recovery Harvest	Escapement	Total
Cook Inlet									
ADF&G	Ship Creek Hatchery Complex		4,218			166			4,384
	Statewide lakes	Arctic grayling	1,373			115			1,488
		Landlocked salmon	8,977						8,977
		Rainbow trout	39,117				3,099		42,216
Cook Inlet Totals			53,685			3,380			57,065
Statewide Totals			53,685			3,380			57,065

Table 31.—Summary of salmon production in 2009 from Fish Resource Permits issued by the Alaska Department of Fish and Game.

Area/Permittee	Species	Maximum number to be released
Southeast		
Fawn Mountain Elementary	Coho	150
Juneau-Douglas High School	Coho	10,000
Petersburg High School	Pink	
Point Higgins Elementary	Coho	240
Thorne Bay	Coho	900
UAF School of Fisheries and Ocean Sciences	Pink	20,000 fry
UAF School of Fisheries and Ocean Sciences	Sockeye	
Yakutat	Coho	150
Southcentral		
Abbott Loop Elementary	Coho	500
ADF&G Aquatic Ed. Anchorage Lobby	Coho	500
Alaska Native Cultural Charter School	Coho	500
Alpenglow Elementary	Coho	500
Anchorage Lutheran	Coho	500
Aquarian Charter	Coho	500
Bartlett High School	Coho	500
Baxter Elementary	Coho	500
Bayshore Elementary	Coho	500
Bear Valley Elementary	Coho	500
Begich Middle School	Coho	500
Beryozova School	Coho	500
Big Lake Elementary	Coho	500
Bowman Elementary	Coho	500
Butte Elementary	Coho	500
Campbell Elementary	Coho	500
Central Middle School	Coho	500
Chapman School	Coho	500
Chickaloon School	Coho	500
Chinook Elementary	Coho	500
Chugach Optional	Coho	500
Chugiak Elementary	Coho	500
Clark Middle School	Coho	500
College Gate Elementary	Coho	500
Colony High School	Coho	500
Cook Inlet Academy	Coho	500
Cooper Landing	Coho	500
Copper Center	Coho	500
Cottonwood Creek Elementary	Coho	500
Creekside Park Elementary	Coho	500
Denali Elementary	Coho	1000
Eagle Academy	Coho	500
Eagle River Elementary	Coho	500
East High School	Coho	500
Fairview Elementary	Coho	500

-continued-

Table 31.–Page 2 of 4.

Area/Permittee	Species	Maximum number to be released
Finger Lake Elementary	Coho	500
Fireweed Secondary	Coho	500
Girdwood Jr. High	Coho	500
Goldenview Middle	Coho	500
Goose Bay Elementary	Coho	500
Gruening Middle School	Coho	500
Hanshaw Middle School	Coho	500
Hermon Hutchens Elementary	Chum	500
Homer Flex High School	Coho	500
Homer High School	Coho	500
Homestead Elementary	Coho	500
Hope	Coho	500
Houston High School	Coho	500
Houston Middle School	Coho	500
Huffman Elementary	Coho	500
Iditarod Elementary	Coho	500
Inlet View Elementary	Coho	1000
Jesse Lee Home	Coho	500
Kaleidoschope Elementary	Coho	500
Kalifornsky Beach Elementary	Coho	500
Kasuun Elementary	Coho	500
Kenai Alternative	Coho	500
Kenai High School	Coho	500
Kenai Middle School	Coho	500
Kenny Lake School	Coho	500
Kenny Lake School	Chum	500
Kincaid Elementary	Coho	500
King Career Center	Coho	500
Klatt Elementary	Coho	500
Knik Elementary	Coho	500
Lake Hood Elementary	Coho	1000
Lake Otis Elementary	Coho	500
Larson Elementary	Coho	500
Machetanz Elementary	Coho	500
Matanuska Christian School	Coho	500
McNeil Canyon Elementary	Coho	500
Meadow Lakes Elementary	Coho	500
Mears Middle School	Coho	500
Midnight Sun School	Coho	500
Mirror Lake Middle School	Coho	500
MS Correspondence	Coho	500
Mt. Iliamna	Coho	500
Mt. Spurr Elementary	Coho	500
Mt. View Elementary	Coho	1000

-continued-

Table 31.–Page 3 of 4.

Area/Permittee	Species	Maximum number to be released
Muldoon Elementary	Coho	500
Nanwalek School	Coho	500
Nikisky/North Star Elementary	Coho	500
Ninilchik School	Coho	500
North Star RTC	Coho	500
Northern Lights ABC	Coho	500
Northern Pacific Academy	Coho	500
Palmer High School	Coho	500
Palmer Middle School	Coho	500
Pioneer Peak Elementary	Coho	500
Polaris K12	Coho	500
Ravenwood Elementary	Coho	500
Redoubt Elementary	Coho	500
Rogers Park Elementary	Coho	500
SAVE High School	Coho	500
Scenic Park Elementary	Coho	500
Service High School	Coho	500
Seward Elementary	Coho	500
Seward Middle School	Coho	500
Shaw Elementary	Coho	500
Sherrod Elementary	Coho	500
Skyview High School	Coho	500
Snowshoe Elementary	Coho	500
Soldotna Elementary	Coho	500
Soldotna Middle School	Coho	500
South High School	Coho	500
Spring Hill Elementary	Coho	500
St. John’s School	Coho	500
Sterling Elementary	Coho	500
Susan B. English	Coho	500
Susitna Elementary	Coho	500
Susitna Valley High School	Coho	500
Swanson Elementary	Coho	1000
Taku Elementary	Coho	500
Talkeetna Elementary	Coho	500
Tanaina Elementary	Coho	500
Teeland Middle School	Coho	500
Trailside Elementary	Coho	500
Trapper Creek Elementary	Coho	500
Tudor Elementary	Coho	500
Tustumena Elementary	Coho	500
Ursa Minor Elementary	Coho	500
Valley Christian School	Coho	500
Voznesenka School	Coho	500

-continued-

Table 31.–Page 4 of 4.

Area/Permittee	Species	Maximum number to be released
Wasilla High School	Coho	500
West Homer Elementary	Coho	500
Williwaw Elementary	Coho	500
Winterberry Charter	Coho	500
Interior		
Ben Eielson Jr/Sr High School	Coho	500
Delta Junction Elementary	Coho	1000
Joy Elementary	Coho	500
Ladd Elementary	Coho	500
Nordale Elementary	Coho	500
Pearl Creek Elementary	Coho	500
Salcha Elementary	Coho	500
Ticasuk Brown Elementary	Coho	500
Tok School	Coho	500
Two Rivers Elementary	Coho	500
University Park Elementary	Coho	500
Watershed School	Coho	500
Weller Elementary	Coho	500
Wood River Elementary	Coho	500
Western		
Akhiok School	Coho	500
Chiniak School	Coho	500
Danger Bay School	Coho	500
East Elementary (Kodiak)	Coho	500
Karluk School	Coho	500
Kodiak Christian School	Coho	500
Kodiak High School	Coho	500
Kodiak Learning Center	Coho	500
Kodiak Middle School	Coho	500
Larsen Bay School	Coho	500
Main Elementary (Kodiak)	Coho	500
North Star Elementary	Coho	500
Old Harbor School	Coho	500
Ouizinkie School	Coho	500
Peterson Elementary	Coho	500
Port Lions School	Coho	500
St. Mary's School	Coho	500
Arctic-Yukon-Kuskokwim		
Aleknagik School	Coho	1000
Dillingham Elementary	Coho	1500
Dillingham High School	Coho	500
Dillingham Middle School	Coho	500
Nome Elementary School	Coho	500

Table 32.—Updated pink salmon returns to Alaska hatcheries in 2008, including common property harvest, as reported by operators.

Area/Operator/Location	Common Property Harvest				Personal Use/ Subsistence	Other	Cost Recovery			Total
	Seine	Gillnet	Troll	Sport			Brood	Harvest	Escapement	
Southeast										
AKI	Port Armstrong	41,690				5,500	27,556	19,057		93,803
KNFC	Gunnuk Creek	2,693				500	3,233		3,000	9,426
NSRAA	Medvejie					700	9,678		800	11,178
SJC	Sitka	50,495					1,737	59,979		112,211
Southeast Totals		94,878				6,700	42,204	79,036	3,800	226,618
Prince William Sound										
PWSAC	Armin F. Koernig	5,194,542	15,211			7,000	186,982	708,853		6,112,588
	Wally Noerenberg	6,717,714	712,140			4,000	198,568	1,105,099		8,737,521
	Cannery Creek	9,682,510	67,482			10,000	196,926	1,035,934		10,992,852
VFDA	Solomon Gulch	10,241,172			30,000		238,594	4,302,725	41,361	14,853,852
Prince William Sound Totals		31,835,938	794,833		30,000	21,000	821,070	7,152,611	41,361	40,696,813
Cook Inlet										
PGHC	Port Graham					5,000				5,000
Cook Inlet Totals						5,000				5,000
Kodiak										
KRAA	Kitoi Bay	423,745				55,000	304,286	1,694,647	5,000	2,482,678
Kodiak Totals		423,745				55,000	304,286	1,694,647	5,000	2,482,678
Statewide Totals		32,354,561	794,833		30,000	87,700	1,167,560	8,926,294	50,161	43,411,109

Table 33.—Updated chum salmon returns to Alaska hatcheries in 2008, including common property harvests, as reported by operators.

Area/Operator/Location	Common Property Harvest				Personal Use/Subsistence	Other	Brood	Cost Recovery Harvest	Escapement	Total
	Seine	Gillnet	Troll	Sport						
Southeast										
SSRAA	Whitman Lake									
	Nakat Inlet (summer)	6,130	209,855							215,985
	Anita Bay (summer)	70,000	89,800							159,800
	Kendrick Bay (summer)	396,400	30,400							426,800
		53,449	50,254					585,000		821,460
	Neets Bay (summer)						132,757			
	Neets Bay (fall)	13,625	14,974				45,211	74,760		148,570
	Nakat Inlet (fall)	3,815	32,550							36,365
NSRAA	Medvejie	339,260	196,085	51,159		1,776	29,809	248,365	280	866,734
	Hidden Falls	1,747,776		35		31,500	99,393	372,853		2,251,557
	Haines projects		8,579				2,052		10,815	21,446
DIPAC	Macaulay	4,262	606,773		1,800	5,000	147,038	656,530		1,421,403
	Amalga	3,278	482,515					946,704		1,432,497
	Limestone Inlet	1,600	136,764							138,364
	Boat Harbor	3,606	463,432							467,038
KNFC	Gunnuk Creek	2,441		15		2,100	6,942			11,498
	Southeast Cove	754		5				2,579		3,338
AKI	Port Armstrong	3,639				157	14,343	54		18,193
SJC	Sitka	32,457	13,642	3,559		124	3,627	24,581	20	78,010
MIC	Tamgas Creek	26,500	80,000			50	7,166			113,716
		2,708,992	2,415,623	54,773	1,800		488,338	2,911,426	11,115	8,632,774
Southeast Totals						40,707				
Prince William Sound										
PWSAC	Wally Noerenberg									
	Pt. Chalmers	51,392	2,488,260		1,000	4,000	144,747	508,365		3,197,764
	Sawmill Bay	1,184,688								1,184,688
		510,703								510,703
Prince William Sound Totals		1,746,783	2,488,260		1,000		144,747	508,365		4,893,155
Kodiak										
KRAA	Kitoi Bay	92,308				6,000	28,010	717	2,000	129,035
Kodiak Totals		92,308				6,000	28,010	717	2,000	129,035
Statewide Totals		4,548,083	4,903,883	54,773	2,800	50,707	661,095	3,420,508	13,115	13,654,964

Table 34.—Updated coho salmon returns to Alaska hatcheries in 2008, including common property harvests, as reported by operators.

Area/Operator/Location	Common Property Harvest						Cost Recovery			Total	
	Seine	Gillnet	Troll	Sport	Personal Use/ Subsistence	Other	Brood	Harvest	Escapement		
Southeast											
SSRAA	Whitman Lake	1,800	5,600	10,000	2,600			3,300	13,000		36,300
	Anita Bay	400	12,100	6,400	400						19,300
	Nakat	1,000	16,000	7,500	500						25,000
	Neets Bay	6,800	32,400	71,000	11,300				70,300		191,800
	Burnett Inlet	200	8,900	1,000	70	30	3,200	2,100	8,600		24,100
	Neck Lake	200	8,000	1,300	9,300		3,000		19,000		40,800
	Crystal Lake Hatchery		400	800			7	1,450			2,657
NSRAA	Medvejie	1,123	1,127	722	95		25		152		3,244
	Hidden Falls	2,200	103	100,389	4,058		3,188	8,029	126,265		244,232
	Deer Lake			7,380	1,000		2,080		8,048		18,508
AKI	Port Armstrong			22,793	663		3,566	3,166	31,422		61,610
KNFC	Gunnuk Creek			50	50		1	50		50	201
DIPAC	Macaulay		2,829	11,221	4,329		819	226	24,855		44,279
KTHC	Deer Mountain	305	1,789	554	1,155	22	1,806	300	8	350	6,289
SJC	Sitka			2,457			2,377	551	75		5,460
POWHA	Klawock Hatchery	8,829		26,628	2,039		3,597	3,444	20,840	6,210	71,587
MIC	Tamgas Creek	4,250	39,000	18,337	1,000		600	1,956	15,000		80,143
Southeast Totals		27,107	128,248	288,531	38,559	52	24,266	24,572	337,565	6,610	875,510
Prince William Sound											
PWSAC	Wally Noerenberg	36,721	80,469		1,250		200	2,409			121,049
	Cordova/Whittier/Chenega				19,000						19,000
VFDA	Solomon Gulch	157,883			84,528		418	1,683	22,827	1,000	268,339
Prince William Sound Totals		194,604	80,469		104,778		618	4,092	22,827	1,000	408,388
Cook Inlet											
CIAA	Trail Lakes						321	285	350	320	1,276
ADF&G	Ship Creek Complex				6,735			843		393	7,971
	Bird Creek				3,030					115	3,145
	Homer Spit				3,767						3,767
	Resurrection Bay				15,710			240			15,950
	Campbell Creek							10			10
	Eklutna tailrace				2,253						2,253
Cook Inlet Totals					31,495		321	1,378	350	828	34,372
Kodiak											
KRAA	Kitoi Bay	116,543			300		3,000	5,732	3,823		129,398
	Pillar Creek- road system				1,600						1,600
Kodiak Totals		116,543			1,900		3,000	5,732	3,823		130,998
Statewide Totals		338,254	208,717	288,531	176,732	52	28,205	35,774	364,565	8,438	1,449,268

Table 35.—Updated Chinook salmon returns to Alaska hatcheries in 2008, including common property harvests, as reported by operators.

Region/Operator/Location		Seine	Gillnet	Troll	Sport	Personal Use/ Subsistence	Other	Brood	Cost Recovery Harvest	Escapement	Total
Southeast											
SSRAA	Whitman Lake		600	1,900	1,320			1,020	9,820		14,660
	Neets Bay	1,468	814	584	112				3,096		6,074
	Crystal Lake Hatchery		490	1,440	2,500		63	1,400			5,893
	Anita Bay	2,180	6,480	1,300	110						10,070
	Neets Bay	3,442	1,936	1,436	678				7,504		14,996
NSRAA	Medvejie Creek	2,564	4,346	15,122	1,644	127	490	3,966	15,396		43,655
	Hidden Falls	4,584	270	2,475	329		54	2,522	2,095		12,329
AKI	Port Armstrong		9	64	6		1,147	238	93		1,557
DIPAC	Gastineau		758	956	2,093			641	765		5,213
	Skagway Site		58	84	154		747	179			1,222
KTHC	Deer Mountain Hatchery		43	64	169		14	104		68	462
SJC	Sitka			81			95	3			179
MIC	Tamgas Creek	200	300	947	600		150	153	1,450		3,800
NMFS	Little Port Walter	105	105	2,738	90		2,650				5,688
Southeast Totals		14,543	16,209	29,191	9,805	127	5,410	10,226	40,219	68	125,798
Prince William Sound											
ADF&G	Ship Creek Complex				3,362						3,362
Prince William Sound Totals					3,362						3,362
Cook Inlet											
ADF&G	Ship Creek Complex										
	Kachemak Bay				4,278						4,278
	Ship Creek				2,571			418		833	3,822
	Fleming Spit				30						30
	Crooked Creek				1,129			199		305	1,633
	Ninilchik River							273		70	343
	Eklutna Tailrace				594						594
	Deception Creek							113		204	317
Cook Inlet Totals					8,602			1,003		1,412	11,017
Kodiak											
KRAA	Pillar Creek				120		41	139			300
Kodiak Totals					120		41	139			300
Statewide Totals		14,543	16,209	29,191	21,889	127	5,451	11,368	40,219	1,480	140,477

Table 36.—Updated Sockeye salmon returns to Alaska hatcheries in 2008, including common property harvests, as reported by operators.

Area/Operator/Location	Seine	Gillnet	Troll	Sport	Personal Use/ Subsistence	Other	Brood	Cost Recovery Harvest	Escapement	Total
Southeast										
SSRAA Burnett Inlet		650					50			700
Neck Lake		1,840		25	1		164			2,030
Hugh Smith Lake									3,400	3,400
DIPAC Snettisham	523	27,501		106		205	8,739	53,350		90,424
Sweetheart Lake	67	2,062		311	6,729					9,169
Stikine River		23,015								23,015
Taku River		10,801								10,801
MIC Tamgas Creek							86	50		136
Southeast Totals	590	65,869		442	6,730	205	9,039	53,400	3,400	139,675
Prince William Sound										
PWSAC Main Bay	56,557	778,684		700		5,000	10,659			851,600
Gulkana I and II										
Paxson Lake		8,939				50,842	18,650		14,266	92,697
Crosswind Lake		11,279				64,158			9,592	85,029
Summit Lake		1,064				6,053			2,357	9,474
Prince William Sound Totals	56,557	799,966		700		126,053	29,309		26,215	1,038,800
Cook Inlet										
CIAA Trail Lakes – Bear Lake	54,191			5,400		678	4,444	31,384	8,550	104,647
Big Lake		5,000		17	17	145			12,900	18,079
Hidden Lake		11,100		1,700	1,800		1,900		7,500	24,000
Leisure/Hazel Lakes	62,761			650	4,900	103		1,907		70,321
Tutka Bay						5,350	150	14,604		20,104
Kirschner Lake	1,174					2,000		11,588		14,762
PGH Port Graham					500			29,353		29,853
Cook Inlet Totals	118,126	16,100		7,767	7,217	8,276	6,494	88,836	28,950	281,766
Kodiak										
KRAA Kitoi Bay	62,043			300				4,275	3,500	70,118
Pillar Creek										
Settler's Cove					636					636
Spiridon Lake	176,098	68,316								244,414
Foul Bay	5,534									5,534
Waterfall Bay	164									164
Kodiak Totals	243,839	68,316		300	636			4,275	3,500	320,866
Statewide Totals	419,112	950,251		9,209	14,583	134,534	44,842	146,511	62,065	1,781,107

Table 37.—Updated “other” enhanced fish returns to Alaska hatcheries in 2008, as reported by operators.

Region/Operator/Location	Species	Commercial	Sport Catch	Personal Use/ Subsistence	Other	Brood	Cost Recovery Harvest	Escapement	Total
Southeast									
DMTH	Deer Mountain					5			5
Southeast Totals						5			5
Cook Inlet									
ADF&G	Ship Creek Complex		4,424			126			4,550
	Statewide lakes		1,558			143			1,701
			34,892			2,881			37,773
			9,955						9,955
Cook Inlet Totals			50,829			3,150			53,979
Statewide Totals			50,829			3,155			53,984

Table 38.—Actively operated Alaska hatcheries.

Initials	Address	City, State, Zip	Office phone	Fax phone	Hatchery	Hatchery Manager	Director	Email
Southeast								
R SSRAA	14 Borch Street	Ketchikan, AK 99901	(907) 225-9605 (907) 225-2635 (907) 247-8790 (907) 874-2525 (907) 772-4772	(907) 225-1348	Whitman Lake Neets Bay Burnett Inlet Crystal Lake ^a	Jay Creasy Bill Lyden Ron Parsley Loren Thompson	John Burke	johnb@ssraa.org whitman@kpunet.net neetsbay@starband.net burnettinlet@starband.net crystal.lake@starband.net
R NSRAA	1308 Sawmill Cr. Rd	Sitka, AK 99835	(907) 747-6850	(907) 747-1470	Medveje Creek Hidden Falls ^a Haines Projects	Bill Coltharp Scott Wagner Benji Burbank	Pete Esquiro	pete_esquiro@nsraa.org bill_coltharp@nsraa.org scott_wagner@nsraa.org benji_burbank@nsraa.org
P DIPAC	2697 Channel Dr.	Juneau, AK 99801	(907) 463-5114 (907) 463-5114 (907) 463-5115 (907) 463-5114	(907) 463-3213 (907) 463-3213	Macaulay Snettisham ^a Sheep Creek	Andrew Ollenburg Kevin Steck	Eric Prestegard	Eric_prestegard@dipac.net andrew_ollenburg@dipac.net kevin_steck@dipac.net
P POWHA	PO Box 554	Craig, AK 99921	(907) 755-2231	(907) 755-2440	Klawock River ^a Port Saint Nicholas	John Bruns John Bruns	John Bruns	powha@aptalaska.net powha@aptalaska.net
P SJC	801 Lincoln St	Sitka, AK 99835	(907) 747-8878	(907) 747-2987	Sheldon Jackson	Dan Goodness		daniel.goodness@gmail.com
P KNFC	P.O. Box 523	Take, AK 99830	(907) 785-6460	(907) 785-6475	Gunnuk Creek	John Oliva	John Oliva	gunnukcreek@hughes.net
P AKI	P.O. Box 21990	Juneau, AK 99802	(907) 586-3443 (907) 586-2228	(907) 586-2236	Port Armstrong	Ben Contag	Bart Watson	aki@ak.net portarmstrong@starband.net
P KTHC	1158 Salmon Rd	Ketchikan, AK 99901	(907) 228-5531	(907) 228-5548	Deer Mountain	Jerry Guthrie		jguthrie@kictribe.org
F NMFS	17109 Lena Point Loop Rd.	Juneau, AK 99801	(907) 789-6055 (907) 789-6618	(907) 789-6094	Little Port Walter Auke Creek	Frank Thrower John Joyce		frank.thrower@noaa.gov john.joyce@noaa.gov
F MIC	PO Box 8	Metlakatla, AK 99929	(907) 886-3150	(907) 886-3152	Tamgas Creek	Steve Leask		stewel@aptalaska.net
Prince William Sound								
R PWSAC	PO Box 1110	Cordova, AK 99574	(907) 424-7511	(907) 424-7514	AF Koernig W Noerenberg Main Bay ^a Gulkana ^a Cannery Creek ^a	Craig Perry Rob Unger Dave Robertson Gary Martinek Neil Wright	Dave Reggiani	dave.pwsac@ak.net afk.pwsac@ak.net wnh.pwsac@ak.net mbh.pwsac@ak.net gkh@cvinternet.net cch.pwsac@ak.net
P VFDA	PO Box 125	Valdez, AK 99686	(907) 835-4874 (907) 835-1329	(907) 835-5951	Solomon Gulch	Mike Anderson	Jason Wells	vfda@cvinternet.net vfda@cvinternet.net
Cook Inlet								
R CIAA	40610 Kalifornsky Beach Rd	Kenai, AK 99611	(907) 283-5761 (907) 288-3688	(907) 283-9433 (907) 288-3663	Trail Lakes ^a Tutka ^a Eklutna	Tom Prochazka	Gary Fandrei	gfandrei@ciaanet.org tprochazka_tlh@ciaanet.org
P PGH	PO Box 5543	Port Graham, AK 99603	(907) 284-2233	(907) 284-2238	Port Graham		Patrick Norman	pnormanvc@hotmail.com
S ADFG	941 N. Reeve Blvd. PO Box 5267	Anchorage, AK 99501 Anchorage, AK 99505	(907) 274-0065 (907) 428-1348		Elmendorf Ft Richardson	Robert McFadden Andrea Tesch		robert.mcfadden@alaska.gov andrea.tesch@alaska.gov
Kodiak								
R KRAA	PO Box 3407	Kodiak, AK 99615	(907) 486-6555 (907) 486-4730 (907) 743-0617	(907) 486-4105	Pillar Creek ^a Kitoi Bay ^a	Gary Byrne Andrew Aro	Kevin Brennan	kraa@gci.net pch@gci.net kitoi@gci.net

-continued-

Table 38.—Page 2 of 2.

Initials	Corporate name	Hatchery	PNP Permit #	PNP permit issued	Species reared	Web Site
Southeast						
SSRAA	Southern Southeast Regional Aquaculture Assoc.	Whitman Lake	8	3/9/78	chum, coho, Chinook	www.ssraa.org
		Neets Bay	19	6/17/83	chum, coho, Chinook	
		Burnett Inlet	40	9/30/97	sockeye, coho	
		Crystal Lake ^a			Chinook, coho	
NSRAA	Northern Southeast Regional Aquaculture Assoc.	Medvejie Creek	16	8/17/81	chum, coho, Chinook, pink	www.nsraa.org
		Hidden Falls ^a	28	6/22/88	chum, Chinook, coho	
		Haines Projects	34	4/29/92	chum, sockeye	
		Sawmill Creek	44	3/11/07	coho	
DIPAC	Douglas Island Pink and Chum, Inc	Sheep Creek	11	9/19/79	chum, pink, coho	www.dipac.net
		Macaulay	25	6/3/87	chum, pink, coho, Chinook	
		Snettisham ^a	39	7/15/96	sockeye	
POWHA	Prince of Wales Hatchery Association	Klawock River	38	2/19/96	coho, sockeye, Chinook, steelhead	
		Port Saint Nicholas	43	6/25/04	Chinook	
SJC	Sheldon Jackson College	Sheldon Jackson	3	4/29/75	pink, chum, coho, Chinook, steelhead	
KNFC	Kake Nonprofit Fisheries Corporation	Gunnuk Creek	7	4/1/77	pink, chum, coho	http://gunnukcreekhatchery.org/
AKI	Armstrong-Keta, Inc.	Port Armstrong	13	2/23/81	pink, chum, Chinook, coho	
KTHC	Ketchikan Tribal Hatchery Corporation	Deer Mountain	37	6/22/94	Chinook, coho, steelhead, rainbow	
NMFS	National Marine Fisheries Service	Little Port Walter			Chinook, pink, steelhead	www.afsc.noaa.gov/ABL/MSI/msi_acs.htm
		Auke Creek			pink, chum, sockeye, coho	
MIC	Tamgas Creek Hatchery	Tamgas Creek			chum, coho, Chinook, sockeye	
Prince William Sound						
PWSAC	Prince William Sound Aquaculture Association	AF Koernig	2	9/29/75	pink, chum	www.pwsac@ak.net
		W Noerenberg	20	6/17/83	pink, chum, Chinook, coho	
		Main Bay ^a	31	4/17/01	sockeye	
		Gulkana ^a	42	7/5/00	sockeye	
		Cannery Creek ^a	26	6/22/88	pink	
VFDA	Valdez Fisheries Development Association	Solomon Gulch	15	6/26/81	pink, coho, Chinook	
Cook Inlet						
CIAA	Cook Inlet Aquaculture Association	Trail Lakes ^a	27	6/22/88	sockeye, coho, Chinook	www.ciaanet.org
		Tutka ^a	32	1/3/94	pink, sockeye	
		Eklutna	17	2/5/82	sockeye, coho	
PGH	Port Graham Hatchery Corporation	Port Graham	33	8/3/92	pink, sockeye, coho	
ADFG	Alaska Department of Fish and Game	Ship Creek Complex ^b			Chinook, coho, char, grayling, lake & rainbow trout	www.state.ak.us/adfg/adfghome.htm
Kodiak						
KRAA	Kodiak Regional Aquaculture Association	Pillar Creek ^a	41	5/1/98	sockeye, coho, Chinook	www.ptialaska.net/~kraa07/index.html
		Kitoi Bay ^a	29	7/5/88	pink, chum, coho, sockeye	

Codes: R=Regional Aquaculture Association Private Nonprofit (PNP) hatchery, P=Non Association PNP hatchery, F=Federal/Bureau of Indian Affairs hatchery, S=State hatchery

^a State owned hatchery contracted to private sector.

^b Elmendorf and Fort Richardson hatcheries.

Table 39.—Permitted capacity of Alaskan private nonprofit hatcheries, in millions of eggs, 2009.

Region/Operator/Location		Combined						Total
		Pink	Chum	Pink & Chum	Coho	Chinook	Sockeye	
Southeast								
SSRAA	Whitman Lake		44.30		3.40	1.50		49.20
	Neets Bay		84.00		5.00	2.00		91.00
	Burnett Inlet				2.50		2.70	5.20
	Crystal Lake ^a							
NSRAA	Hidden Falls		91.00		6.10	3.80		100.90
	Medvejie Creek	0.30	60.00		0.41	5.20		65.91
	Haines projects		4.80				2.00	6.80
	Sawmill Creek				4.33			4.33
AKI	Port Armstrong ^b	85.00	30.00		5.00	2.00		122.00
DIPAC	Macaulay	50.00	121.00		1.50	0.95		173.45
	Sheep Creek				0.15			0.15
	Snettisham						33.50	33.50
KTHC	Deer Mountain				0.38	0.13	0.05	0.56
KNFC	Gunnuk Creek ^c			65.00	0.25			65.25
POWHA	Klawock				5.00		5.00	10.05
	Port St Nicholas					0.77		0.77
SJC	Sheldon Jackson	1.00	10.00		0.15	0.10	0.02	11.27
Southeast Totals^d		136.30	445.10	65.00	34.17	16.45	43.20	740.35
Prince William Sound								
PWSAC	Armin F. Koernig	162.00	17.00					179.00
	Wally Noerenberg	148.00	131.00		4.00	4.00		287.00
	Cannery Creek	152.00						152.00
	Main Bay						11.00	11.00
	Gulkana						36.75	36.75
VFDA	Solomon Gulch	230.00			2.00	0.30		232.30
Prince William Sound Totals^d		692.00	148.00		6.00	4.30	47.75	898.05
Cook Inlet								
PGHC	Port Graham	110.00					1.35	111.35
CIAA	Trail Lakes				6.00	4.00	30.00	40.00
	Eklutna				0.16		18.00	18.16
	Tutka Bay	125.00					0.66	125.66
Cook Inlet Totals^d		235.00			6.16	4.00	50.01	295.17
Kodiak								
KRAA	Kitoi Bay	215.00	28.00		2.30		0.60	245.90
	Pillar Creek				0.50	0.45	20.00	21.04
Kodiak Totals^d		215.00	28.00		2.80	0.45	20.60	266.94
Statewide Totals^d		1,278.30	621.10	65.00	49.13	25.20	161.56	2,200.51

^a Crystal Lake hatchery is a state-owned facility under partial contract to SSRAA; it does not have a PNP permit.

^b Port Armstrong is permitted for a total of 5.0 million Chinook and coho salmon, not to exceed 2.0 million Chinook salmon.

^c Gunnuk Creek hatchery is permitted for a combined 65.0 million pink and chum salmon, not to exceed 20.0 million pink salmon.

^d Some figures may not total exactly due to rounding.