

# **Production and Harvest of Unuk River Chinook Salmon, 2017-2018**

by

**Philip Richards**

and

**Nathan Frost**

---

June 2017

---

Alaska Department of Fish and Game

Divisions of Sport Fish and Commercial Fisheries



## Symbols and Abbreviations

The following symbols and abbreviations, and others approved for the Système International d'Unités (SI), are used without definition in the following reports by the Divisions of Sport Fish and of Commercial Fisheries: Fishery Manuscripts, Fishery Data Series Reports, Fishery Management Reports, and Special Publications. All others, including deviations from definitions listed below, are noted in the text at first mention, as well as in the titles or footnotes of tables, and in figure or figure captions.

Weights and measures (metric)		General		Mathematics, statistics	
centimeter	cm	Alaska Administrative Code		all standard mathematical signs, symbols and abbreviations	
deciliter	dL		AAC		
gram	g	all commonly accepted abbreviations	e.g., Mr., Mrs., AM, PM, etc.	alternate hypothesis	H <sub>A</sub>
hectare	ha			base of natural logarithm	<i>e</i>
kilogram	kg	all commonly accepted		catch per unit effort	CPUE
kilometer	km	professional titles	e.g., Dr., Ph.D., R.N., etc.	coefficient of variation	CV
liter	L			common test statistics	(F, t, $\chi^2$ , etc.)
meter	m	at	@	confidence interval	CI
milliliter	mL	compass directions:		correlation coefficient (multiple)	R
millimeter	mm	east	E	correlation coefficient (simple)	r
<b>Weights and measures (English)</b>		north	N	covariance	cov
cubic feet per second	ft <sup>3</sup> /s	south	S	degree (angular )	°
foot	ft	west	W	degrees of freedom	df
gallon	gal	copyright	©	expected value	<i>E</i>
inch	in	corporate suffixes:		greater than	>
mile	mi	Company	Co.	greater than or equal to	≥
nautical mile	nmi	Corporation	Corp.	harvest per unit effort	HPUE
ounce	oz	Incorporated	Inc.	less than	<
pound	lb	Limited	Ltd.	less than or equal to	≤
quart	qt	District of Columbia	D.C.	logarithm (natural)	ln
yard	yd	et alii (and others)	et al.	logarithm (base 10)	log
<b>Time and temperature</b>		et cetera (and so forth)	etc.	logarithm (specify base)	log <sub>2</sub> , etc.
day	d	exempli gratia		minute (angular)	'
degrees Celsius	°C	(for example)	e.g.	not significant	NS
degrees Fahrenheit	°F	Federal Information Code	FIC	null hypothesis	H <sub>0</sub>
degrees kelvin	K	id est (that is)	i.e.	percent	%
hour	h	latitude or longitude	lat or long	probability	P
minute	min	monetary symbols		probability of a type I error	
second	s	(U.S.)	\$, ¢	(rejection of the null hypothesis when true)	$\alpha$
<b>Physics and chemistry</b>		months (tables and figures): first three letters	Jan,...,Dec	probability of a type II error	
all atomic symbols		registered trademark	®	(acceptance of the null hypothesis when false)	$\beta$
alternating current	AC	trademark	™	second (angular)	"
ampere	A	United States		standard deviation	SD
calorie	cal	(adjective)	U.S.	standard error	SE
direct current	DC	United States of America (noun)	USA	variance	
hertz	Hz	U.S.C.	United States Code	population sample	Var var
horsepower	hp				
hydrogen ion activity (negative log of)	pH	U.S. state	use two-letter abbreviations (e.g., AK, WA)		
parts per million	ppm				
parts per thousand	ppt, ‰				
volts	V				
watts	W				

***REGIONAL OPERATIONAL PLAN SF.1J.2017.05***

**PRODUCTION AND HARVEST OF UNUK RIVER CHINOOK SALMON,  
2017-2018**

by  
Philip Richards and Nathan Frost  
Alaska Department of Fish and Game, Division of Sport Fish, Juneau

Alaska Department of Fish and Game  
Sport Fish Division  
P.O. Box 110024, Juneau, AK 99811-0024  
June 2017

The Regional Operational Plan Series was established in 2012 to archive and provide public access to operational plans for fisheries projects of the Divisions of Commercial Fisheries and Sport Fish, as per joint-divisional Operational Planning Policy. Documents in this series are planning documents that may contain raw data, preliminary data analyses and results, and describe operational aspects of fisheries projects that may not actually be implemented. All documents in this series are subject to a technical review process and receive varying degrees of regional, divisional, and biometric approval, but do not generally receive editorial review. Results from the implementation of the operational plan described in this series may be subsequently finalized and published in a different department reporting series or in the formal literature. Please contact the author if you have any questions regarding the information provided in this plan. Regional Operational Plans are available on the Internet at: <http://www.adfg.alaska.gov/sf/publications/>

*Philip Richards and Nathan Frost,  
Alaska Department of Fish and Game  
Sport Fish Division  
P.O. Box 110024, Juneau, AK 99811-0024*

*This document should be cited as follows:*

*Richards, P., and N. Frost. 2017. Production and harvest of Unuk River Chinook salmon, 2017-2018. Alaska Department of Fish and Game, Regional Operational Plan No. ROP.SF.1J.2017.05, Anchorage.*

The Alaska Department of Fish and Game (ADF&G) administers all programs and activities free from discrimination based on race, color, national origin, age, sex, religion, marital status, pregnancy, parenthood, or disability. The department administers all programs and activities in compliance with Title VI of the Civil Rights Act of 1964, Section 504 of the Rehabilitation Act of 1973, Title II of the Americans with Disabilities Act (ADA) of 1990, the Age Discrimination Act of 1975, and Title IX of the Education Amendments of 1972.

**If you believe you have been discriminated against in any program, activity, or facility please write:**

ADF&G ADA Coordinator, P.O. Box 115526, Juneau, AK 99811-5526

U.S. Fish and Wildlife Service, 4401 N. Fairfax Drive, MS 2042, Arlington, VA 22203

Office of Equal Opportunity, U.S. Department of the Interior, 1849 C Street NW MS 5230, Washington DC 20240

**The department's ADA Coordinator can be reached via phone at the following numbers:**

(VOICE) 907-465-6077, (Statewide Telecommunication Device for the Deaf) 1-800-478-3648,

(Juneau TDD) 907-465-3646, or (FAX) 907-465-6078

**For information on alternative formats and questions on this publication, please contact:**

ADF&G, Division of Sport Fish, Research and Technical Services, 333 Raspberry Rd, Anchorage AK 99518 (907) 267-2375

## SIGNATURE/TITLE PAGE

Project Title: Production and harvest of Unuk River Chinook salmon, 2017-2018.

Project leader(s): Philip Richards, Fishery Biologist III; Nathan Frost, Fishery Biologist I

Division, Region and Area Sport Fish Region I, Juneau

Project Nomenclature: NOAA- LOA, General Fund Match, F-10-33 S-1-6, F-10-34 S-1-6

Period Covered July 1, 2017–June 30, 2018

Field Dates: August 1–August 30, 2017; September 24–October 30, 2017; March 25–April 30, 2018

Plan Type: Category III

### Approval

Title	Name	Signature	Date
Project leaders	Philip Richards		4/11/17
	Nathan Frost		6/14/17
Area Manager	Kelly Reppert		4/27/17
Biometrician	David Evans		4/10/17
Research Coordinator	Jeff Nichols		6/16/17
Regional Supervisor	Judy Lum		6.16.17

# TABLE OF CONTENTS

	<b>Page</b>
LIST OF TABLES.....	iii
LIST OF FIGURES .....	iii
LIST OF APPENDICES .....	iii
ABSTRACT .....	1
PURPOSE.....	1
BACKGROUND .....	2
OBJECTIVES.....	4
Secondary Objectives .....	4
METHODS.....	5
Study Design .....	5
Age-sex composition and reciprocal of marked fraction (Objectives 3, 4).....	5
Harvest of Chinook Salmon from the 2016 Brood Year (Objective 1).....	7
Mean Length of Chinook Salmon Juveniles (Objective 2).....	11
Data Collection .....	11
Juvenile Tagging.....	11
Age-Sex-Length Sampling .....	12
Coded Wire Tag Sampling .....	13
Data Reduction .....	14
Data Analysis.....	14
Age and Sex Composition of Escapement.....	14
Estimation of Adult Abundance.....	15
Estimation of Fraction of Adults Bearing Coded Wire Tags.....	17
Contributions to Fisheries.....	18
Estimates of Mean Length of Juveniles .....	19
Smolt Abundance.....	19
SCHEDULE AND DELIVERABLES .....	21
RESPONSIBILITIES .....	21
REFERENCES CITED .....	23
APPENDIX A .....	27
APPENDIX B.....	37
APPENDIX C.....	43

## LIST OF TABLES

Table	Page
1. Unuk River tributary systems where spawning ground sampling occurs.....	5

## LIST OF FIGURES

Figure	Page
1. Behm Canal area in Southern Southeast Alaska (inset), showing major Chinook salmon systems, including the Unuk River. ....	3
2. Unuk River area in Southeast Alaska, showing major tributaries, barriers to fish migration and location of research sites. ....	8
3. Plots showing the effect of increasing the number of juvenile fish tagged, number of adults inspected, and proportion of harvest sampled on relative precision of estimate of total harvest of Unuk River Chinook salmon, brood year 2016.....	10

## LIST OF APPENDICES

Appendix	Page
A1. Numbers of Unuk River Chinook salmon fall parr and spring smolt captured and tagged with coded wire tags, 1992 brood year to present. ....	28
A2. Data pertaining to adipose clip and coded wire tag fractions by brood year (1992-2011) for Unuk River Chinook salmon. ....	31
A3. Statistics used to estimate the harvest of Chinook salmon adults returning to the Unuk River from the 2016 brood.....	35
B1. Division of Sport Fish coded wire tag daily log form. ....	38
B2. Physical data form. ....	39
B3. Unuk River spawning grounds age-sex-length form, 2017. ....	40
B4. Coded wire tag (CWT) anadromous stream numbers, coded wire tag sample numbers, and age-sex-length (ASL) stream codes for the Unuk River and its tributaries. ....	41
B5. Coded wire tag sampling form. ....	42
C1. Predicting escapement from index counts using an expansion factor. ....	44





## ABSTRACT

This plan describes the coded wire tagging of juvenile Chinook salmon *Oncorhynchus tshawytscha* on the Unuk River for the 2016 brood year and will cover the coded-wire tagging of parr in fall of 2017 and smolt in spring of 2018, along with the recovery of tags in the escapement and recreational and commercial fisheries from the 2019 through 2023 return years. This study provides estimates of smolt and parr abundance, overwinter (freshwater) survival, mean lengths of juveniles, and harvest information of Chinook salmon originating from the Unuk River in Southeast Alaska. A separate project will be conducted on the Unuk River that employs aerial and foot survey peak counts to estimate large (>660 mm mid eye to fork of tail length) adult Chinook salmon returning to the river in 2017. The primary goals of this and the companion study are to estimate inriver run size, total run size, marine harvest-exploitation rate and harvest distribution, smolt and parr abundance, marine survival (smolt to adult) and overwinter survival (parr to smolt). The Alaska Department of Fish and Game uses this information to make local and regional management decisions, and the Pacific Salmon Commission uses the data for coastwide management and stock assessment through the Chinook Technical Committee.

Key words: Chinook Salmon, *Oncorhynchus tshawytscha*, escapement, Unuk River, Behm Canal, parr, smolt, harvest, age, sex, length, composition, mark tag fraction, coded wire tag, adipose fin, Southeast Alaska.

## PURPOSE

The Unuk River produces the largest natural run of Chinook salmon *Oncorhynchus tshawytscha* in southern Southeast Alaska (SEAK) and flows into Behm Canal, a narrow saltwater passage east of Ketchikan (Pahlke 2010). Unuk River Chinook salmon is a Pacific Salmon Commission (PSC) exploitation rate and escapement indicator stock and contributes towards management of the SEAK sport fishery allocation in accordance with the Pacific Salmon Treaty (PST). Stock assessment of Unuk River Chinook salmon includes full production estimates; the Unuk River coded wire tag (CWT) project is an important component towards estimating smolt abundance, marine harvest in mixed-stock fisheries, and marine survival from smolt to adult. Coded wire tag studies have been conducted on the Unuk River consistently since 1994. Smolt abundance along with harvest contributions have been estimated for Unuk River Chinook salmon brood years (BY) 1992–2010, with brood years 2011–2015 in progress.

The information provided from these studies was used to establish the current biological escapement goal (BEG) for the Unuk River (Hendrich et al. 2008). The BEG also meets provisions of the 2009 Pacific Salmon Treaty. This Treaty requires “an abundance-based framework for managing all Chinook fisheries”; the framework should involve “harvest regimes based on annual estimates of abundance” that are “designed to meet maximum sustained yield (MSY) or other agreed upon biologically-based escapement and/or harvest rate objectives.” The results are also be used by the Chinook Technical Committee (CTC) of the PSC for: (1) development of a model stock for SEAK, (2) exploitation rate analysis, and (3) improved escapement assessment for Behm Canal Chinook salmon stocks.

The Unuk River is 1 of 12 stocks chosen by the ADF&G as an indicator stock for the Chinook Salmon Research Initiative (CSRI) program (ADF&G 2013). These rivers were chosen to help address issues of low production for Chinook salmon statewide. The recent downturn in Chinook salmon production initiated a look at production statewide and identification of gaps in our knowledge base. Juvenile information was identified as a knowledge gap and the Unuk River is 1 of only 2 projects statewide that provides information on parr and smolt abundance and freshwater survival from parr to smolt; the other system providing this information is the Chilkat River, also located in Southeast Alaska (Elliott and Power 2016).

## BACKGROUND

The Unuk, Chickamin, Blossom, and Keta rivers traverse the Misty Fjords National Monument (Figure 1). The Unuk and Chickamin rivers produce the largest natural runs of Chinook salmon *Oncorhynchus tshawytscha* in southern SEAK and flow into Behm Canal, a narrow saltwater passage east of Ketchikan. The Unuk and Chickamin rivers are used as indicator stocks by the PSC (CTC 2014). The escapements in these streams are indexed using standardized surveys conducted by helicopter and foot. Concerns for Chinook salmon escapements in Behm Canal systems were raised in 1992 when escapement indices dropped in all 4 rivers. As a result, all available historical harvest and escapement data for the Unuk and Chickamin rivers were reviewed to evaluate the status of these stocks.

The evaluation resulted in the ADF&G Division of Sport Fish (DSF) initiating a research program in Behm Canal in 1993 and 1994. Total escapement had not been estimated in any Behm Canal Chinook salmon system prior to 1994. Mark-recapture (MR) experiments were used to estimate the escapement of large ( $\geq 660$  mm mid-eye-to-fork of tail (MEF)) Chinook salmon in the Unuk River in 1994 (Pahlke et al. 1996), from 1997 through 2009 and 2011; the 2010, 2012–2014 mark-recapture estimates were considered untrustworthy, so aerial expansion estimates were used (Jones et al. 1998; Jones and McPherson 1999, 2000, 2002; Weller and McPherson 2003a-b, 2004, 2006a-b; Weller and Evans 2009, 2012; Weller et al. 2012; Richards et al. *in prep*). The mark-recapture experiment was discontinued in 2015 due to the loss of the set gillnet site and inability to capture sufficient numbers of Chinook salmon during event 1. The estimates of escapement for large Chinook salmon spawners from 1997 to 2016 ranged from 956 in 2012 to 10,541 in 2001, and averaged 4,000. During years when escapements were estimated with mark-recapture, approximately 13% to 25% of all large Chinook spawners were counted in surveys, a much lower percentage than previously thought. Spawning distribution in the Unuk River was estimated using radio telemetry studies in 1994 and 2009; these studies showed that the index surveys are conducted in tributaries on each river that contain over 80% of the large Chinook salmon escapement. After meeting or exceeding escapement for 35 consecutive years (1977 to 2011), the Unuk River stock of Chinook salmon has missed the lower bound of the escapement goal 4 out of the past 5 years (2012-2014, 2016).

Earlier research (1983–1988) in Behm Canal systems included coded wire tagging wild juvenile (mostly smolt) Chinook salmon on the Unuk and Chickamin rivers to estimate adult harvest, harvest distribution, and rearing areas for juvenile fish (Kissner 1985; Pahlke 1995). The majority of recovered coded wire tags (CWTs) were made in troll fisheries and during escapement sampling. Harvest estimates for Unuk River Chinook salmon ranged from 726 fish (1985 brood) to 3,039 fish (1983 brood), with 95% relative precision of harvest estimates ranging from 24% (1982 brood) to 78% (1985 brood). Further indications suggested that these stocks were harvested as both immature and mature fish throughout SEAK. Harvests were most abundant in southern and central SEAK inside waters from 1986 to 1992, but ranged from outer coast waters near Yakutat in the north to northern British Columbia to the south and have since been documented to the southern Bering Sea

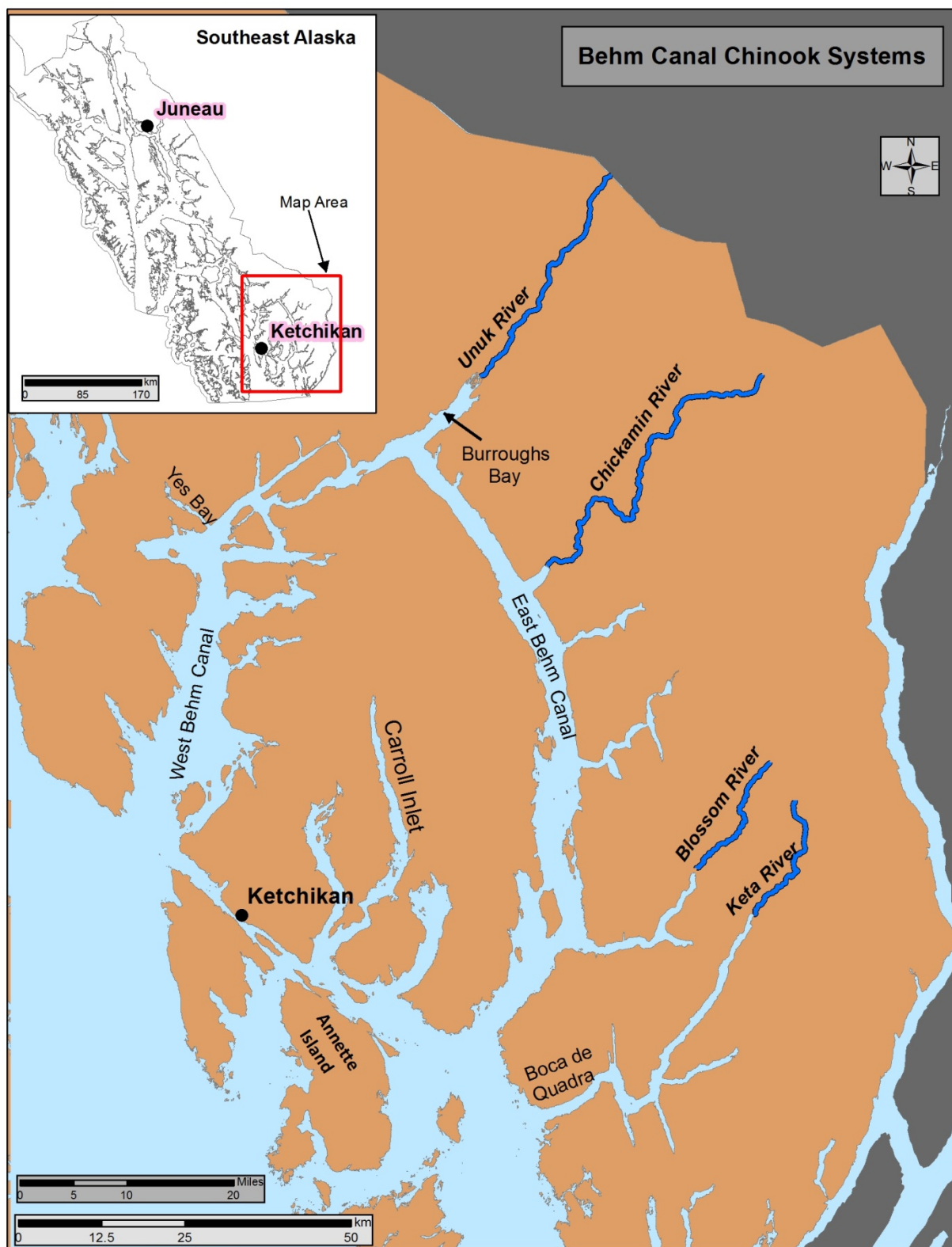


Figure 1.–Behm Canal area in Southern Southeast Alaska (inset), showing major Chinook salmon systems, including the Unuk River.

Beginning in the fall of 1993, Chinook salmon parr rearing in the Unuk River were tagged with CWTs, and in the spring of 1994, smolt from the same brood year were tagged. Beginning in 1999, all principal age classes of adult Chinook salmon returning to the Unuk River were tagged with CWTs in prior years as juveniles. As many as 79,000 Chinook salmon parr and smolt, have been tagged during emigration per year since the 1996 brood year (Appendix A1) and have resulted in CWT marked fractions as high as 10.7% (1996 brood year; Appendix A2). Recent tagging efforts have not been as successful, ranging from about 26,000 for the 2009 brood year to about 14,500 for the 2014 brood year. However, 43,000 parr were tagged for the 2015 brood year. The marked fraction for the most recent brood year (2010) for which the 1.1 through 1.4 age classes have returned is 3.2%.

In 2017, three studies will be conducted on the Unuk River: tagging brood year 2016 juvenile Chinook salmon in freshwater in the fall (2017) and spring (2018) with CWTs, adult recovery of CWT fish on the spawning grounds, and aerial and foot surveys of large Chinook salmon (Richards et al. *in prep*).

The data from these three Unuk River studies should enable us to estimate total harvest, harvest distribution, smolt abundance, and marine survival and exploitation rates for this stock.

## **OBJECTIVES**

The research objectives for July 2017 through June 2018 are to:

1. Estimate the total harvest of Unuk River Chinook salmon, brood year 2016, in sampled sport and commercial salmon fisheries from 2019 to 2023 via recovery of CWTs applied in the fall of 2017 and spring of 2018 such that the estimated harvest is within 30% of the true value with 90% confidence.
2. Estimate the mean lengths of Chinook salmon parr (fall 2017) and smolts (spring 2018) such that the estimates are within 1 mm of the true values 95% of the time.
3. Estimate the age and sex compositions of large Chinook salmon in the Unuk River such that estimates are within 10 percentage points of the true values 95% of the time.
4. Estimate the proportion of Chinook salmon from each brood stock marked with a CWT such that the estimate has a  $CV \leq 30\%$ .

## **SECONDARY OBJECTIVES**

1. Estimate smolt abundance for the 2018 outmigration (2016 brood year).
2. Estimate fall parr abundance in 2017 (2016 brood year).
3. Estimate mean length-at-age and length-at-sex for the spawning population.
4. Estimate the age-sex composition of medium ( $\geq 400$  to  $< 660$  mm MEF) and small ( $< 400$  mm MEF) Chinook salmon spawning in the Unuk River.
5. Estimate the abundance of small and medium Chinook salmon in the Unuk River based on the proportion of small and medium fish sampled on the spawning grounds.

# METHODS

## STUDY DESIGN

### Age-sex composition and reciprocal of marked fraction (Objectives 3, 4)

With the loss of the adult mark recapture project in 2015, all age-sex composition information and data for estimation of mark fractions must come from spawning ground sampling efforts. The samples used for the marked fraction and age-sex composition will be collected from index areas on select tributaries of the Unuk River (Table 1).

Table 1.—Unuk River tributary systems where spawning ground sampling occurs.

Location	Importance as spawning site (rank)	Historical survey date			
		1 <sup>st</sup>	2 <sup>nd</sup>	Peak	Index area
Cripple Creek	1	8/2	8/8	8/6	Y
Gene's Lake Creek	2	8/6	8/13	8/15	Y
Eulachon River	3	8/17	8/25	8/18	Y
Clear Creek	4	8/10	8/17	8/15	Y
Lake Creek	5	8/5	8/12	8/5-8/25	Y
Kerr Creek	5	8/16	8/23	8/17	Y
Boundary Creek	5	8/4	8/9	8/6	N

Spawning ground sampling will begin approximately 1 August and continue as long as sampling is effective (approximately August 24–31). The goal of sampling is threefold: 1) to estimate the fraction of fish marked with adipose fin clips and CWTs; 2) to estimate age-sex and length (ASL) composition; and 3) to report the numbers of fish seen.

Surveys will be conducted as follows:

*Cripple Creek and Gene's Lake Creek:* two surveys each of large live and dead fish approximately one week apart near the peak of spawning (Table 1). On both creeks, crews will walk upstream through the index area and count large fish (live and dead) throughout the established index area. Crews will then sample carcasses and live fish of all sizes as usual on the trip back downstream. Fish observed in the lake outlet will also be counted during the surveys.

*Eulachon River and Clear, Lake, Boundary, and Kerr creeks:* live and dead large fish observed at each location will be counted while inspecting fish of all sizes for marks and collecting ASL samples.

All survey data will be recorded on the form described in Appendix B3.

In order to prevent double sampling of fish on the spawning grounds, every live and dead fish sampled will be given an operculum punch on the lower one-third (ventral side) of the left operculum (LLOP). Additionally, every dead fish sampled will be slashed several times through the preferred area on the left side using a knife. All previously unsampled Chinook salmon found

or captured on the spawning grounds, regardless of size, will be counted and sampled for ASL and adipose clips and CWT's. Note that any fish not suitable for sampling (head or tail missing, mangled to the point to preclude an accurate length measurement, etc.) will be ignored and not sampled. A variety of gear including dip nets, rod and reel snagging gear, short sections of netting, and spears (for dead fish) will be used to collect fish for sampling. Previous studies have shown this approach is effective for collecting age and sex composition samples and has little significant potential for bias. During studies on the Unuk River (Jones et al. 1998; Jones and McPherson 1999, 2000, and 2002), the Taku River (McPherson et al. 1997), and the Chickamin River (Freeman and McPherson 2003–2005), no significant size bias was detected for large Chinook salmon when these field procedures were carefully and diligently applied. Fish observed on the spawning grounds will be selected for sampling without conscious regard to their sex or size. During each survey all fish will be counted and previously unsampled fish will be inspected to identify marks and determine sex, and measured to determine length (mm MEF). All male fish <700 mm MEF found during sampling that are missing the adipose fin will be sacrificed for recovery of the CWT (See CWT sampling section), whether dead or alive. All fish  $\geq 700$  mm MEF missing the adipose fin and determined to be in a postspawn state will also be sacrificed for recovery of the CWT.

### ***Sample Sizes-Age composition***

Previous plans have had more stringent age-sex criteria and associated larger adult sample sizes; however, recent poor runs and general lack of fish have resulted in failure to achieve these criteria. Production is anticipated to remain poor; moreover the adult MR project has been discontinued at this time which inherently results in fewer fish being sampled for age-sex. As a result, the criteria in Objective 3 have been relaxed and the required age sample size is 153 fish; the minimum sample size for sex composition is 96 fish. The sample size calculations assume no size or sex selectivity, and are based on the methods of Thompson (1987), along with the assumption of a scale regeneration rate of 17%. Despite poor returns, the 5-year average for spawning ground samples is 353 and we anticipate sampling at least 300 fish on the spawning grounds in 2017. Thus, the criteria in Objective 3 should be met.

### ***Sample Sizes- Reciprocal of Coded Wire Tag Marked Fraction in the 2010 to 2014 Broods***

Harvest contributions of Unuk River Chinook salmon will be estimated from recovery of Chinook salmon with CWTs sampled from fisheries. This estimation requires assessment of the CWT marked fraction by brood year. In 2017, ages 1.1 through 1.5 fish will be sampled from the Unuk River inriver run originating from brood years 2010 through 2014. These tags were placed in parr in the fall of 2011 through 2015 and in smolt in the spring of 2012 through 2016. Note that the marked fraction ( $\theta$ ) for CWTs is unknown until returning adults can be sampled inriver. Sampling of adipose-clipped fish is described in the Coded Wire Tag Sampling section. Brood year-specific marked fractions will then be estimated as described in the Data Analysis section (Eq. 16). Estimates of  $\theta$  for a given brood year will be updated as its age class returns. Sampling intensity in recent years has declined due to small runs and budget constraints and an average of only 432 adults per brood year have been sampled for adipose clips for brood years 2006 to 2010 (Appendix A2). We anticipate sampling about 430 adults for the 2016 brood year. Given that we have tagged an average of about 6% of the outmigration for each brood year (2006-2010), a simulation shows that the CV of our estimate of the inverse of the marked fraction ( $1/\theta$ ) should be about 24%, within the prescribed precision of Objective 4 ( $CV \leq 30\%$ ). The average CV of

estimates of 1/θ for brood years 2006 through 2010 is 28%; CVs for 2009 and 2010 brood years have, however, been 32 and 33%.

### **Harvest of Chinook Salmon from the 2016 Brood Year (Objective 1)**

Harvest of Unuk River Chinook salmon from the 2016 brood year will be estimated from the recovery of CWT fish in sampled marine commercial and recreational fisheries in 2019 through 2023. Chinook salmon parr from the 2016 brood year will be tagged with CWTs in the fall of 2017, and smolt will be tagged in the spring of 2018.

Chinook salmon parr will be captured from late September through the end of October in the fall of 2017, and smolt will be captured from late March through late April in the spring of 2018. Minnow traps will be set in the mainstem of the Unuk River between approximately river km 3 (just above the upper set net site) and river km 19 (just below lava fall; Figure 2). Approximately 120 to 150 traps baited with salmon eggs will be fished daily. These traps will be divided between 2 trap lines, each of which will be operated and checked by a 2-person crew. Tag codes used for parr and smolt will be unique and not mixed.

Almost all Chinook salmon smolt from the Unuk River spend 1 year in the freshwater as parr and then emigrate to marine waters as freshwater-age-1 (yearling) smolt. All tagged smolt are therefore basically from a single brood year. Chinook salmon mature and return over 5 years beginning with age-1.1 “jacks” and ending with age-1.5 fish.

#### ***Sample Sizes–Harvest***

An average of 16,750 parr were tagged each fall from 2012 through 2016 (2011 to 2015 brood years). Similarly, an average of 7,500 smolt were tagged each spring since 2012 (Appendix A1). Tagging fall parr is more cost-effective on a per smolt basis than is tagging smolt directly. Recovery rates of CWT'd fish released in the fall and spring combined with total release numbers allow estimation of overwinter survival and therefore the number of fall juveniles that survive to emigrate as smolt the following spring. For the 2016 brood year, we anticipate sampling about 430 fish (average for 2006-2010 brood years).

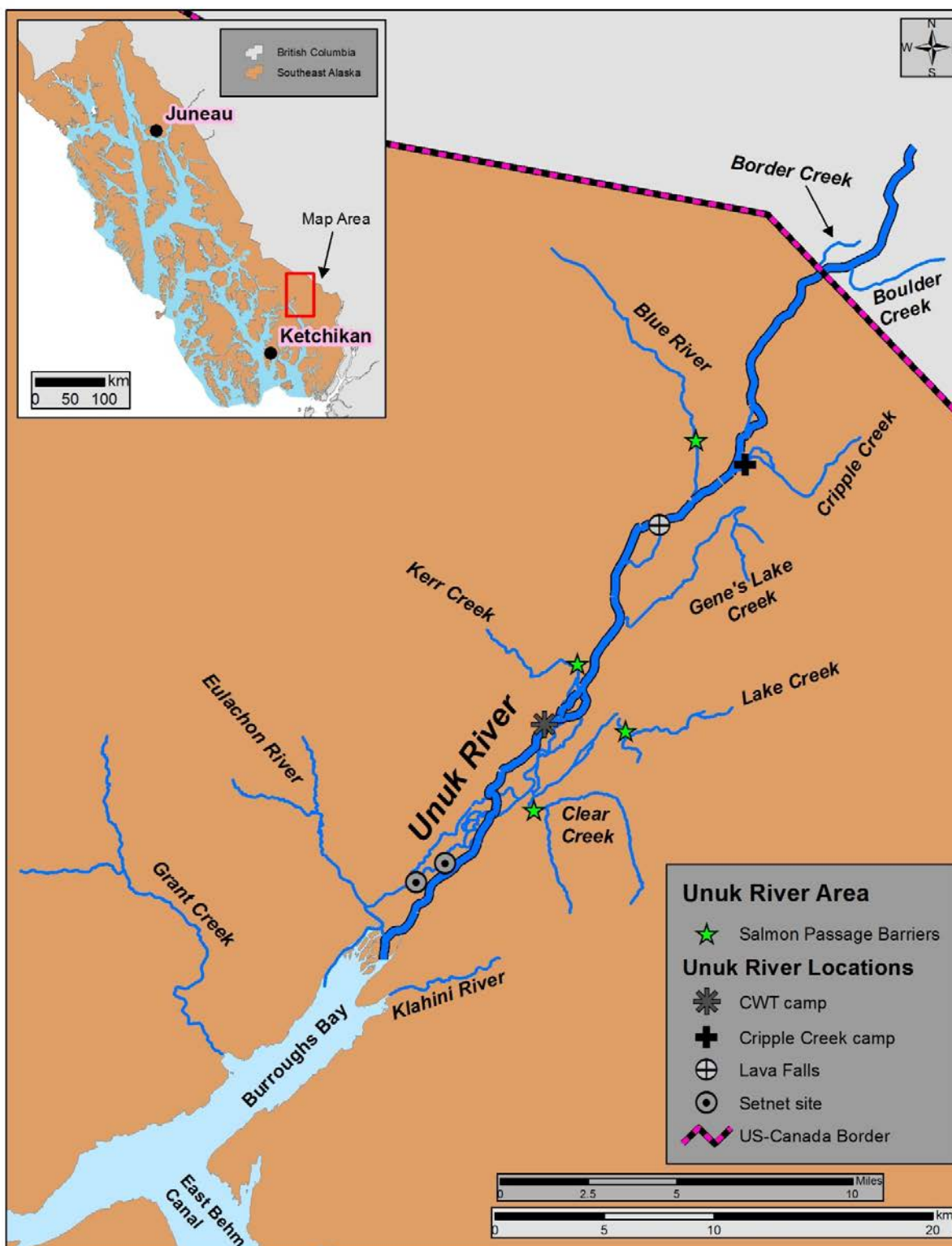


Figure 2.—Unuk River area in Southeast Alaska, showing major tributaries, barriers to fish migration and location of research sites.

*Note:* no setnet sites will be used in 2017.



A simulated data set (Appendix A3) and the methods of Bernard et al. (1998) were used to anticipate precision of the contribution estimates (Objective 1) for the 2016 brood year. The simulated dataset was based on the following assumptions:

1. Chinook salmon smolt abundance in 2018 (brood year 2016) is 350,000 (approximate average of brood years 2006–2010).
2. Number of tagged smolt emigrating in 2017 is 30,000 (includes smolt surviving from fall tagging and spring-tagged smolt). It is noted that the average number of tagged smolt emigrating for brood years 2007 through 2011 is approximately 15,900. We will have the resources for the fall of 2017 through spring of 2018, to expend enough trapping effort such that 30,000 tagged smolt emigrate in 2018 for brood year 2016. (An anticipated partition between fall and spring is approximately 35,000 parr and 10,000 smolt tagged, assuming a 55% survival from parr to smolt). The anticipated  $\theta$  is therefore 0.086 (30,000/350,000).
3. Port and creel sampling rates will be similar to recent 5 year averages (listed in Appendix A3);
4. Number of adults sampled for CWTs on spawning ground surveys is 430.
5. Probabilities ( $\pi_i$ ) that fish from the Unuk River 2016 brood year are in fishery harvest samples (from a particular stratum  $i$ , e.g. Traditional Troll, period 1) are calculated as averages of probabilities for brood years 2000–2010 (listed in Appendix A3).

Specific fishery strata listed in Appendix A3 are those responsible for the majority of CWT recoveries from tagged brood year 2000 to 2010 fish. We anticipate that of the estimated harvest from the 2016 brood, 19% will be harvested at age-1.2, 65% at age-1.3, and 14% at age-1.4. Based on past experience, we expect about 57% of the harvest will be taken in the troll fishery, 10% in the sport fishery, and 19% in the gillnet fishery; the remainder will be taken in other, rarer strata, classified as “Other” in Appendix A3. Based on our assumptions, we anticipate about 52 random fishery CWT recoveries. Under these conditions, the expected 90% relative precision (RP) for the harvest is about 25%, meeting Objective 1 criteria. An additional 30 ( $0.086 \times 350$ ) adipose-clipped fish bearing CWTs should be encountered inriver during spawning ground surveys.

Based on methodology in Bernard et al. (1998), the probabilities of recovering at least 1 tag in each individual stratum varied from 7% to 100%. The product of the probabilities of recovering at least 1 tag in all strata listed in Appendix A3 indicates that we have almost no chance of recovering a CWT in every one of the strata. For strata representing 51% of the harvest of Unuk River Chinook salmon, there is a 65% chance of recovering at least one tag from them.

The above statistics are not encouraging, but would be improved by increasing the number of tagged emigrating smolt. Figure 3 shows that increasing the number of tagged smolt (left plot) or the proportion of the harvest inspected (right plot) is more effective at reducing the relative precision of the total harvest estimate than increasing the number sampled for estimation of  $\theta$  (middle plot). Such increases would also reduce the risk of not recovering any tags.

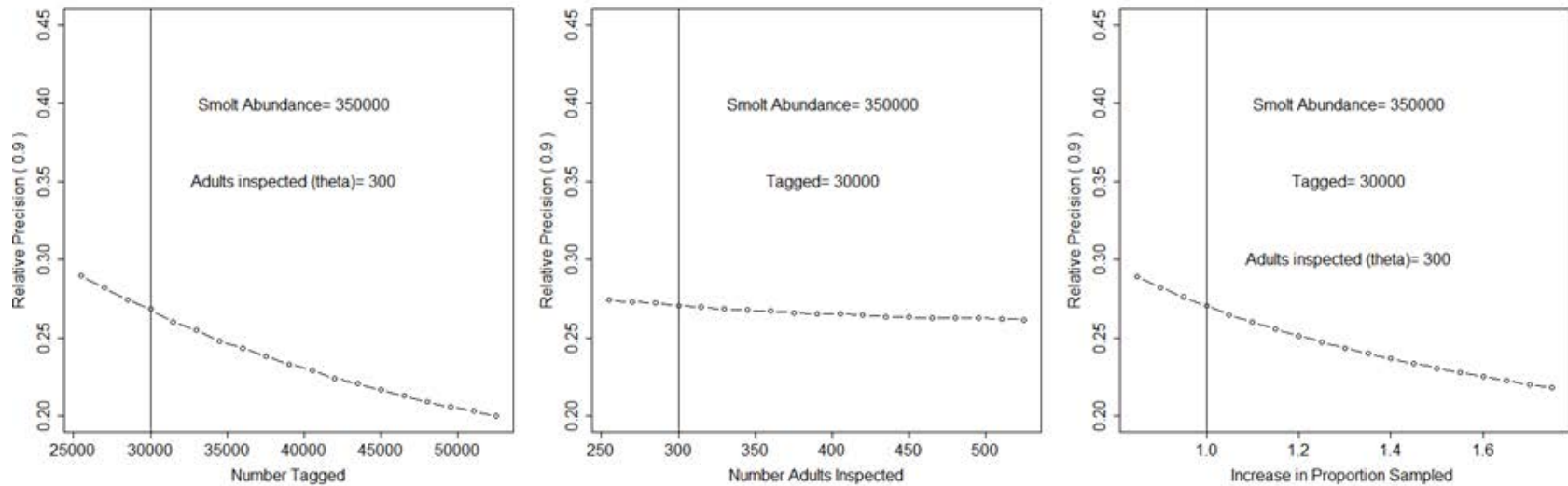


Figure 3.—Plots showing the effect of increasing the number of juvenile fish tagged, number of adults inspected, and proportion of harvest sampled on relative precision of estimate of total harvest of Unuk River Chinook salmon, brood year 2016.

*Note:* Vertical bars denote anticipated level for brood year 2016.

We have strived in the past to have tagged 30,000 of the emigrating smolt for each brood year, but have failed to reach this level in recent years; we estimate that only about 9600 tagged smolt emigrated for brood year 2010, and about 14,400 for brood year 2011. Using an estimated overwinter survival rate of 0.55 for fall-tagged parr, we estimate that about 19,200 tagged smolt emigrated for brood year 2012, about 13,100 for brood year 2013, and 9800 for brood year 2014. Much higher tagging success was achieved for fall parr for brood year 2015, and we anticipate that >30,000 tagged smolt will emigrate. It is noted that we succeeded in tagging about 26,000 for brood year 2008 and will likely tag at least 30,000 for brood year 2016. Budget constraints for the 2010 and 2011 brood year curtailed our tagging program; it was reported that parr and smolt were present and that had resources been available, substantially more fish could have been tagged. Resources for the 2016 brood year will be available to conduct a full tagging project and we are optimistic that we can reach the target of 30,000 tagged outmigrating smolt, as we did for brood year 2015. More fish will be tagged if possible.

## **Mean Length of Chinook Salmon Juveniles (Objective 2)**

Systematically drawn samples of captured juvenile Chinook salmon will be measured for length to estimate the mean length of the populations within 1 mm for 95% relative precision (Objective 2).

### ***Sample Sizes-Mean Length***

According to procedures in Cochran (1977, p. 77–78), the sample size  $n$  needed to estimate the mean length of parr within  $d$  mm for  $100*(1-\alpha)\%$  relative precision under simple random sampling, with a standard deviation of lengths  $s$ , is given by:

$$n = (Z_{(1-\alpha/2)} s / d)^2 \quad (1)$$

For standard normal variate  $Z_{(1-\alpha/2)} = 1.96$ ,  $s = 6.5$  mm and  $d = 1$  mm, the required sample size  $n = 162$ . Based on a catch of 35,000 Chinook salmon parr (see Assumption 2 above), every 216<sup>th</sup> parr captured should be measured. However, in case we capture less than 35,000 parr, we will measure to the nearest 1 mm every 100<sup>th</sup> Chinook salmon parr captured. Similarly, assuming 10,000 smolt with a standard deviation of 7 mm are captured, every 62<sup>nd</sup> smolt should be sampled for a total of 162. However, to be conservative, every 33<sup>rd</sup> (3 in every 100) Chinook salmon spring smolt will be measured to the nearest 1 mm. Juvenile Chinook salmon that are measured for length will also be weighed to the nearest 1/10 g. There is no reason to collect scales on Unuk River Chinook salmon smolt for aging purposes as nearly all are age-1.0 smolt (Hendrich et al. 2008).

## **DATA COLLECTION**

### **Juvenile Tagging**

All captured Chinook salmon parr and smolt not missing adipose fins will be tranquilized with a buffered MS 222 solution and tagged with a CWT following procedures described in Koerner (1977). These fish will then have their adipose fin removed and will be subsequently released. All CWT fish will be held overnight to test for mortality and tag retention. We assume that there is no impact on mortality from simply holding fish overnight, and that any mortality observed the following day is due to tagging. All smolt captured that are missing an adipose fin will be passed through a magnetic tag detector, and the presence or absence of a CWT will be recorded.

All tagging, recapture, and retention data will be recorded daily on a *CWT Daily Log Form* (Appendix B1). A separate *CWT Daily Log Form* will be filled out for each day of operation and a summary page will be updated periodically. A new form is also required upon initial use of each

tag code, with a 1 mm length of wire taped to the form on the first day a new code is used. Daily procedures will be as follows:

1. Record tagging site, date, and species.
2. On the Physical Data Form (Appendix B2) record date, water temperature to the nearest 0.5°C, and water depth at the staff gauge to the nearest 0.5 inch. Data should be collected at approximately 0800 each day.
3. At 0800–0900 hrs check 100 fish for tag retention in the sample of fish from the previous day's tagging and record the results. If retention is less than 98 out of 100 fish, the entire batch will be rechecked and every fish that tests negative will be retagged. After all tag retention fish have been checked, count any mortalities and then release all of the live fish from the net pens into suitable habitat. Retag all fish that test negative if retention is less than 98 out of 100.
4. Run the trap lines. Remove fish from the traps and transport them to the tagging station. Inspect each live fish and count the number missing adipose fins. Record this number under "Recaptures" on the CWT Daily Log Form. Check all recaptures for tags with the detector and record the number without CWTs. Release all recaptures after testing and retag any that test negative.
5. Give all live fish not previously tagged a CWT and pass each through the tag detector. If a fish tests negative for the presence of a CWT, retag the fish. Keep a count of all retagged fish on a hand counter. Write the beginning and ending machine numbers from the specific Northwest Marine Technology Mark IV<sup>1</sup> tagging machine used on the *CWT Daily Log Form* and record the total number of retagged fish and erroneous tags (i.e., goofs, misses, tagged fingers, practice tags, etc.). Write out all hand calculations on the form so that these calculations can be checked and verified at a later date.
6. Systematically select and measure to the nearest 1 mm FL every 100<sup>th</sup> unmarked Chinook salmon parr (fall 2017) and every 33<sup>rd</sup> unmarked Chinook salmon smolt (spring 2018). All of these fish will also be weighed to the nearest 1/10 g.

### **Age-Sex-Length Sampling**

All adult Chinook salmon caught will be sampled for ASL. Age compositions for each escapement sampling location (tributary) will be tabulated using the Spawning Grounds Age-Sex-Length Form (Appendix B3). For age composition sampling, it is imperative that good scale samples be taken.

Five scales will be removed from the preferred area on the left side accordingly: 3 scales from 2 to 3 rows above the lateral line taken 1 inch apart, and 2 scales 4 to 5 rows up and ½ inch from one of the lower 3 scales (Welanders 1940). In some cases the preferred area on the left side of the fish may be devoid of scales. In such instances, the preferred area on the right side of the fish should be sampled for scales and if this is devoid of adequate samples, then samples should be taken from the areas near the dorsal or anal fins on the left side of the fish. All scales will be carefully cleaned, mounted on scale gum cards, 5 per column, using methods described in

---

<sup>1</sup> This and subsequent product names are included for a complete description of the process and do not constitute product endorsement.

ADF&G (*unpublished*)<sup>2</sup>. The gum cards will be labeled completely at the time of sampling, or shortly thereafter. Scale cards are sequentially numbered by sampling location, beginning with 001 at each sampling location. The correct ASL stream code (Appendix B4) should also be recorded on each card. Gender will be determined from secondary maturation characteristics and length will be taken to the nearest 5 mm MEF. Secondary maturation characteristics can include predominant snouts and compressiform bodies for males, while females may display abraded caudal fins (i.e., white tails) and prominent bellies. Scales will be cleaned and mounted neatly, without excess water, sand, or mucus. If it is not possible to mount the scales in this manner on site, then the scales will be stored in numbered plastic slide pockets and then mounted later that evening at camp with care taken to clean them properly and to label the gum cards completely, including last names of all samplers for that location for that day. If scales are not collected from a fish for any reason, note that in the comment column on the ASL form and make sure to skip that column on the gum card.

#### MOST IMPORTANTLY:

- 1) sample every Chinook salmon encountered on the spawning grounds, regardless of size, and record all data for each fish on the appropriate form;
- 2) check every fish for the presence or absence of all marks (i.e., LLOP, LAA, adipose fin);
- 3) collect clean, readable scales from the preferred area (or other areas if necessary); and
- 4) collect heads and scales from all adipose-finclipped fish that are dead, post spawn, or <700 mm MEF males

#### **Coded Wire Tag Sampling**

All adult fish sampled in the study will be inspected for adipose fin clips and sampled for ASL. The brood year of all fish sampled (with and without adipose fins) will therefore be known and estimation of brood-year specific adipose-finclipped fractions will be possible. The high value of  $\theta$  (~0.1) would lead to excessive mortality if all pre spawn, adipose-finclipped fish were sacrificed to verify the presence of a valid Unuk River CWT. Therefore, only fish that are dead, post spawn, or <700 mm MEF males without adipose fins will be sacrificed to retrieve CWTs. This size limit for sampling live Chinook salmon will include almost all individuals through age-1.2 fish, a group that is almost exclusively male. All live, unspawned fish >700 mm MEF missing their adipose fin will be noted and released after sampling. Heads of all spawned-out fish alive or dead, will be taken if the adipose fin is missing. Heads so collected will be given a uniquely numbered cinch strap obtained from the Division of Commercial Fisheries (DCF) Mark, Tag, and Age Laboratory, and will be attached to each head. The head will then be sent with a completed CWT sampling form (appendix B5) to the Mark, Tag, and Age Laboratory for dissection and decoding of tags. Results from the adipose fin clip, scale, and direct CWT sampling will be used to:

- estimate the CWT marked fraction by brood year,  $\theta$  (using adipose fin clip, scale, and decoded CWT data); this fraction will be used to estimate marine harvest;

---

<sup>2</sup> ADF&G (Alaska Department of Fish and Game). *Unpublished*. Length, sex, and scale sampling procedure using the ADF&G adult salmon age-length mark-sense form version 3.0. Division of Commercial Fisheries, Douglas, AK.

- compare ages derived from tags to ages determined from scales taken from the tagged fish (using scale and decoded CWT data);
- determine the incidence (if any) of strays from other tagged stocks (decoded CWT data);
- detect loss of CWTs (adipose fin clip and CWT data), and
- estimate abundance, return, and survival rates of smolts and juveniles when combined with other project data analyses (adipose fin clip, scale, and decoded CWT data).

## **DATA REDUCTION**

It is the responsibility of the field crew leaders to insure that all data are recorded daily. Data forms will be kept up to date at all times. Data will be transferred from field forms to EXCEL™ database spreadsheets in the office at a later date. Field forms will be inspected for accuracy and compliance with sampling procedures, compared with the electronic database files, and error checked. Inspections for data entry errors will include looking for incorrect dates, transposed nonsensical lengths, incorrect length measurement method (i.e., FL), etc. Data forms will be kept up to date at all times.

The ADF&G Division of Commercial Fisheries (DCF) is the clearinghouse for all information on CWTs. Completed *CWT TAGGING SUMMARY AND RELEASE INFORMATION Forms* will be compiled using CWT Assist (Version 3.2.0) and sent to the DCF Mark, Tag, and Age Laboratory (Tag Lab). Note that the Tag Lab is the permanent repository for all CWT data for the State of Alaska. The Alaskan CWT data is annually transferred to the Pacific States Marine Fisheries Commission, which stores coastwide CWT data in a permanent and standardized database. An edited copy of the data, along with a data map, will be sent to Research and Technical Services (RTS) in Anchorage with the final report for archiving. All electronic files submitted with the final report will be archived in a report-specific folder on the Docushare system.

Inspection for errors will follow; common issues include: incorrect dates, transposed nonsensical lengths (i.e., 470 mm when the fish was actually 740 mm), correct length measurement method used (i.e., MEF or postorbit of eye-to-hypural (POH)), etc. Scale cards will be checked to ensure that scales are clean and mounted correctly, and that the cards are correctly and completely labeled and matched up with the corresponding ASL data form. Data will be sent to the ADF&G office at regular intervals and inspected for accuracy and compliance with sampling procedures. Data will be transferred from field forms to EXCEL® spreadsheet files. Scales will be pressed and ages estimated in the scale aging lab in Juneau. Scale ages will be entered into the spreadsheet files. When input is complete, data lists will be obtained and checked against the original field data. This will be performed two times to insure that data are error free.

A final, edited copy of the data, along with a data map, will be sent to DSF Research and Technical Services in Anchorage for electronic archiving when the report is submitted.

## **DATA ANALYSIS**

### **Age and Sex Composition of Escapement**

The proportion of the spawning population composed of a given age  $c$  within a size class  $k$  (large, medium, and small) will be estimated as a binomial variable:

$$\hat{p}_{kc} = \frac{n_{kc}}{n_k}, \quad (2)$$

$$\text{var}(\hat{p}_{kc}) = \frac{\hat{p}_{kc}(1 - \hat{p}_{kc})}{n_k - 1} \quad (3)$$

Where  $n_{kc}$  is the number of Chinook salmon of age  $c$  in size group  $k$ , and  $n_k$  is the number of Chinook salmon in the sample of size group  $k$ . Numbers of spawning fish by age will be estimated as the sum of the products of estimated age composition and estimated abundance within a size category:

$$\hat{N}_c = \sum_k (\hat{p}_{kc} \hat{N}_k) \quad (4)$$

Because the  $\hat{N}_k$  in Eq. 4 are correlated ( $\hat{N}_s$  and  $\hat{N}_m$  are estimated from  $\hat{N}_L$  by Eqs. 6 and 7), the  $\text{var}(\hat{N}_c)$  will be estimated by simulation. The stochastic components in the simulation will be: the estimate of large fish as  $\hat{N}_L^* \sim N(\hat{N}_L, \hat{\sigma}_{\hat{N}_L})$ , the vector of estimated size proportions as  $\hat{\phi}^* \sim \text{multinomial}(n_{sp}, \hat{\phi})/n_{sp}$ , and the vector of estimated age-sex proportions for the  $k^{\text{th}}$  size group as  $\hat{p}_k^* \sim \text{multinomial}(n_k, \hat{p}_k)/n_k$ . Equations 2-4 and 6-7 will be applied to each set of simulated values to produce a set of simulated numbers of spawning fish by age,  $\hat{N}_c^*$ . The simulated variance of  $\hat{N}_c$  will be taken as the sample variance of the  $\hat{N}_c^*$ 's. The stochastic process will be simulated 10,000 times.

The proportion of the spawning population composed of a given age will be estimated as :

$$\hat{p}_c = \frac{\hat{N}_c}{\hat{N}_{ALL}} \quad (5)$$

where  $\hat{N}_{ALL}$  is defined in Equation 13.

The  $\text{var}(\hat{p}_c)$  will be estimated as the sample variance of the  $\hat{p}_c$  generated in the simulation described above.

Sex composition and age-sex composition for the entire spawning population and its associated variances will be estimated using the above equations by first redefining the binomial variables in samples to produce estimated proportions by sex  $\hat{p}_g$ , where  $g$  denotes gender (male or female), such that  $\sum_g \hat{p}_g = 1$ , and by age-sex  $\hat{p}_{cg}$ , such that  $\sum_{cg} \hat{p}_{cg} = 1$ .

### Estimation of Adult Abundance

The estimated abundance of large Chinook salmon,  $\hat{N}_L$ , will be calculated as described in Appendix C1, under the section “Systems where escapement is estimated”.

The abundance of small-sized fish  $\hat{N}_S$  and medium-sized fish  $\hat{N}_M$  will be estimated indirectly by expanding the estimate for large fish by the estimated size composition of the spawning escapement (McPherson et al. 1997):

$$\hat{N}_S = \hat{N}_L \frac{\hat{\phi}_S}{\hat{\phi}_L} \quad (6)$$

$$\hat{N}_M = \hat{N}_L \frac{\hat{\phi}_M}{\hat{\phi}_L} \quad (7)$$

Such that  $\hat{\phi}_k$  is the estimated fraction of  $k$ -sized (small, medium, or large) fish in the Chinook salmon spawning population:

$$\hat{\phi}_k = \frac{n_k}{n_{sp}} \quad (8)$$

where,

$n_{sp}$  = Number of fish sampled on the spawning grounds

$n_k$  = Number of  $k$ -sized fish found in  $n_{sp}$ ,

with variance estimated as :

$$\text{var}(\hat{\phi}_k) = \frac{\hat{\phi}_k(1-\hat{\phi}_k)}{n_{sp}-1} \quad (9)$$

It is noted that the number of fish sampled for size is larger (includes all carcasses) than that sampled for age and that the  $\hat{\phi}_k$  are considered relatively unbiased.

The variance of the abundance of small fish will be estimated:

$$\text{var}(\hat{N}_S) = \hat{N}_L^2 \text{var}\left(\frac{\hat{\phi}_S}{\hat{\phi}_L}\right) + \left(\frac{\hat{\phi}_S}{\hat{\phi}_L}\right)^2 \text{var}(\hat{N}_L) - \text{var}\left(\frac{\hat{\phi}_S}{\hat{\phi}_L}\right) \text{var}(\hat{N}_L) \quad (10)$$

where by the delta method (note that  $\text{Cov}(\hat{\phi}_S, \hat{\phi}_L) = -\frac{\hat{\phi}_S \hat{\phi}_L}{n_{sp}}$ ),

$$\text{var}\left(\frac{\hat{\phi}_S}{\hat{\phi}_L}\right) \approx \left(\frac{\hat{\phi}_S}{\hat{\phi}_L}\right)^2 \left( \frac{\text{var}(\hat{\phi}_S)}{\hat{\phi}_S^2} + \frac{\text{var}(\hat{\phi}_L)}{\hat{\phi}_L^2} + \frac{2}{n_{sp}} \right) \quad (11)$$

Similarly,

$$\text{var}(\hat{N}_M) = \hat{N}_L^2 \text{var}\left(\frac{\hat{\phi}_M}{\hat{\phi}_L}\right) + \left(\frac{\hat{\phi}_M}{\hat{\phi}_L}\right)^2 \text{var}(\hat{N}_L) - \text{var}\left(\frac{\hat{\phi}_M}{\hat{\phi}_L}\right) \text{var}(\hat{N}_L) \quad (12)$$

The abundance of all fish will be estimated as:



$$\hat{N}_{ALL} = \frac{\hat{N}_L}{\hat{\phi}_L} \quad (13)$$

with variance estimated as:

$$\text{var}(\hat{N}_{ALL}) = \text{var}(\hat{N}_L) \left[ \frac{1}{\hat{\phi}_L} \right]^2 + \hat{N}_L^2 \text{var} \left[ \frac{1}{\hat{\phi}_L} \right] - \text{var}(\hat{N}_L) \text{var} \left[ \frac{1}{\hat{\phi}_L} \right] \quad (14)$$

where,

$$\text{var} \left( \frac{1}{\hat{\phi}_L} \right) \approx \left[ \frac{1}{\hat{\phi}_L} \right]^4 \text{var}(\hat{\phi}_L) \quad (15)$$

### Estimation of Fraction of Adults Bearing Coded Wire Tags

Experience has shown that estimates of the proportion of adults from a given brood year with CWTs does not change appreciably over return years, and thus the fraction of adults from brood year  $j$  that are marked with a CWT will be estimated from pooled data as:

$$\hat{\theta}_j = \frac{\sum_{i=1}^L a_{ij} \hat{\rho}_{ij}}{\sum_{i=1}^L n_{ij}} \quad (16)$$

where

$n_{ij}$  = number of adults examined in year  $i$  from brood year  $j$  for adipose finclips;

$a_{ij}$  = number of adipose finclips observed in  $n_{ij}$ ;

$\rho_{ij} = \frac{t_{ij}}{a'_{ij}}$ , the proportion of sacrificed adults from brood year  $j$  in year  $i$  that also possess

a valid Unuk CWT; where

$a'_{ij}$  = number of heads examined for CWTs from the  $a_{ij}$  fish with adipose finclips;

$t_{ij}$  = number of CWTs found in  $a'_{ij}$ ; and

$L$  = number of years over which fish from a given brood return (maximum = 5, representing ages 1.1 through 1.5).

The variance of  $\hat{\theta}_j$  will be estimated using a parametric bootstrap simulation (e.g. Geiger 1990).

For each year of recovery  $i$ , adipose clips will be generated as  $a_{ij}^* \sim \text{binomial} \left( n_{ij}, \frac{a_{ij}}{n_{ij}} \right)$ , and then

CWTs will be generated as,  $t_{ij}^* \sim \text{hypergeometric}(m = t_{ij} / a'_{ij} a_{ij}^*, n = a_{ij}^* - t_{ij} / a'_{ij} a_{ij}^*, k = a'_{ij} / a_{ij} a_{ij}^*)$ . Notation for hypergeometric parameters follows that of the R language (R Development Core Team 2005).  $\rho_{ij}^*$  will then be calculated as  $t_{ij}^* / (a'_{ij} a_{ij}^* / a_{ij})$ , and  $\hat{\theta}_j^*$  as:

$$\hat{\theta}_j^* = \frac{\sum_{i=1}^L a_{ij}^* \rho_{ij}^*}{\sum_{i=1}^L n_{ij}} \quad (17)$$

Many values of  $\hat{\theta}_j^*$  will be simulated and the variance of  $\hat{\theta}_j$  and  $\frac{1}{\hat{\theta}_j}$  estimated as the sample variance of the simulated values.

## Contributions to Fisheries

The contribution  $r_{ij}$  of a release group or brood of interest  $j$  to one fishery stratum  $i$  is

$$\hat{r}_{ij} = H_i \left[ \frac{m_{ij}}{\lambda_i n_i} \right] \theta_j^{-1}; \quad \lambda_i = \frac{a'_i t'_i}{a_i t_i} \quad (17)$$

where  $H_i$  = total harvest in the stratum,  $n_i$  = number of fish inspected (the sample) from the stratum,  $a_i$  = number of fish in  $n_i$  that are missing an adipose fin,  $a'_i$  = number of heads from  $a_i$  that arrive at the Tag Lab,  $t_i$  = number of heads out of  $a'_i$  with CWTs detected,  $t'_i$  = number of CWTs out of  $t_i$  that are dissected and decoded,  $m_{ij}$  = number of CWTs with code of interest  $j$  (i.e. Unuk River, brood year 2012), and  $\theta_j$  = fraction of the cohort tagged with code of interest.  $H_i$  is estimated with error in sport fisheries, and  $\theta_j$  is estimated from sampling returning adults inriver.

For these reasons, unbiased estimates of the variance of  $\hat{r}_{ij}$  will be obtained using equations in Table 2 of Bernard and Clark (1996), which show the formulations for large samples. The marked fraction  $\theta$  will be based on the fraction of adults without adipose fins, adjusted for tag loss (see Johnson 2014). While an estimate of  $\theta$  will be available at the end of 2019 (from age-1.1 returns), the final estimate for the 2016 brood year of Chinook salmon will not be “complete” until the end of 2023. Numbers of recovered tags by age and numbers sampled by age will be summed across samples (years) to obtain the final estimate of  $\theta$  (see Johnson 2014 for details). The total harvest for the 2016 brood year will be calculated as the sum of harvests over sampled fishery strata.

Commercial catch data for the analysis will be summarized by ADF&G statistical week and district for gillnet and seine fisheries, or by period (e.g., winter, spring, or summer commercial troll) and quadrant for troll fisheries (Clark et al. 1985). Sport harvest estimates from ADF&G Statewide Harvest Survey reports (e.g., Jennings et al. 2015) will be apportioned using information from sampled marine sport fisheries to obtain estimates of total harvest by biweek and fishery. Sport fish CWT recovery data will be obtained from DCF Tag Lab reports and summarized by biweek and fishery (e.g., biweek 16 during the Sitka Marine Creel Survey) to estimate

contribution. In most cases, CWTs of interest may be recovered in only a few of the sport fish sampling strata that defined the fishery biweek. Assuming that the harvests of fish with CWTs of interest are independent of sampling strata within fishery biweeks, harvests and sampling information will be totaled over the fishery biweek to estimate contributions.

### Estimates of Mean Length of Juveniles

Estimates of mean length and its variance will be calculated with standard sample summary statistics (Cochran 1977). Because size distributions of Chinook salmon parr and smolts are believed to be relatively narrow, any size-selective sampling with minnow traps should be negligible.

### Smolt Abundance

Experience has shown that estimates of the proportion of adults from a given brood year with adipose fin clips does not change appreciably over return years, and thus recovery data are pooled over the  $i$  years (5 maximum) in which fish from brood year  $j$  return. Smolt abundance ( $\hat{N}_{smolt,j}$ ) from brood year  $j$  will be estimated using a version of the Chapman-modified Petersen formula:

$$\hat{N}_{smolt,j} = \frac{(\hat{M}_j + 1)(n_{\bullet,j} + 1)}{(a_{\bullet,j} + 1)} - 1 \quad (18)$$

where

- $n_{\bullet,j}$  =  $\sum_{i=1}^L n_i$ , where  $n_i$  is the number of adults examined in year  $i$  from brood year  $j$  for missing adipose fins;
- $L$  = number of years over which fish from a given brood return (maximum = 5).
- $a_{\bullet,j}$  =  $\sum_{i=1}^L a_i$ , where  $a_i$  is the number of adipose fin clips observed in  $n_i$ ; and
- $\hat{M}_j$  = estimated number of outmigrating smolt originating from brood year  $j$  that bore an adipose fin clip; these fish may be from either the fall ( $f$ ; year  $j+1$ ) or spring ( $s$ ; year  $j+2$ ) tagging programs.  $\hat{M}_j$  is the sum of the estimated number of parr with adipose fin clips from brood year  $j$  surviving to the spring ( $\hat{M}_{f \rightarrow s,j}$ ) and the number of smolt with adipose fin clips from brood year  $j$  ( $M_{s,j}$ ), where:

$$\hat{M}_{f \rightarrow s,j} = M_{f,j} \hat{S}_j \quad (19)$$

and

$M_{f,j}$  = number of parr released with adipose fin clips in the fall of year  $j+1$ ; and  
 $\hat{S}_j$  = estimated proportion of  $M_{f,j}$  that survived to the spring of  $j+2$  (overwinter survival) (see Weller and McPherson 2003a, Appendix A7), where:

$$\hat{S}_j = \frac{\hat{M}_{s,valid,j} v_{\bullet,f,j}}{\hat{M}_{f,valid,j} v_{\bullet,s,j}} \quad (20)$$

and

$\hat{M}_{s,valid,j}$  = estimated number of adipose-finclipped smolt released with valid CWTs in the spring of year  $j+2$ ;

$\hat{M}_{f,valid,j}$  = estimated number of adipose-finclipped parr released with valid CWTs in the fall of year  $j+1$ ;

$v_{\bullet,f,j}$  =  $\sum_{i=1}^L v_{i,f,j}$ , where  $v_{i,f,j}$  is the total number of fish from brood year  $j$  implanted with valid CWTs in the fall of year  $j+1$  that were subsequently recovered, regardless of recovery circumstances (for instance recovery location; marine fishery, escapement, etc, or sample type; random, select, or voluntary; see Harvest section below); and

$v_{\bullet,s,j}$  =  $\sum_{i=1}^L v_{i,s,j}$ , where  $v_{i,s,j}$  is the total number of fish from brood year  $j$  implanted with valid CWTs in the spring of year  $j+2$  that were subsequently recovered, regardless of recovery location or sample type.

The variance of the smolt estimate will be estimated as:

$$\text{var}(\hat{N}_{smolt,j}) = (n_{\bullet,j} + 1)^2 \text{var} \left[ \left( \hat{M}_{f \rightarrow s,j} + M_{s,j} + 1 \right) \frac{1}{(a_{\bullet,j} + 1)} \right] \quad (21)$$

where, by Goodman (1960) for independent variables:

$$\begin{aligned} \text{var} \left[ \left( \hat{M}_{f \rightarrow s,j} + M_{s,j} + 1 \right) \frac{1}{(a_{\bullet,j} + 1)} \right] &= (M_{s,j} + \hat{M}_{f \rightarrow s,j} + 1)^2 \text{var} \left[ \frac{1}{a_{\bullet,j} + 1} \right] + \left[ \frac{1}{a_{\bullet,j} + 1} \right]^2 \text{var}(\hat{M}_{f \rightarrow s,j}) \\ &- \text{var} \left[ \frac{1}{a_{\bullet,j} + 1} \right] \text{var}(\hat{M}_{f \rightarrow s,j}) \end{aligned} \quad (22)$$

and  $\text{var}(\hat{M}_{f \rightarrow s,j})$  is obtained as described in Weller and McPherson (2003a), Appendix A7.

According to the delta method:

$$\text{var}\left[\frac{1}{a_{\bullet} + 1}\right] = \left[\frac{1}{a_{\bullet,j} + 1}\right]^4 n_{\bullet,j} \hat{p}_a (1 - \hat{p}_a) \quad (23)$$

where  $\hat{p}_{a,j} = \frac{a_{\bullet,j}}{n_{\bullet,j}}$  is the estimated proportion of inspected adults from brood year  $j$  with an adipose fin clip.

The two components in equation 23 are not independent, but a simulation using data from studies on 7 brood years of Unuk River Chinook salmon to establish realistic population parameters showed the correlation to be negligible. The simulation showed the simulated variance of smolt abundance to be almost identical to that provided by the average of the Goodman-derived estimates (equation 23) over the simulation.

Parr abundance  $\hat{N}_f$  for brood year  $j$  will be estimated as:

$$\hat{N}_{f,j} = \hat{N}_{smolt,j} \frac{1}{\hat{S}_j} \quad (24)$$

$$\text{var}(\hat{N}_{f,j}) \approx \hat{N}_{f,j}^2 \left[ cv^2(\hat{N}_{smolt,j}) + cv^2(\hat{S}_j) \right] \quad (25)$$

Equation 26 was derived using the delta method as described in Seber (1982), p. 8.

## SCHEDULE AND DELIVERABLES

Parr tagging will begin approximately 24 September, 2017 and span the month of October, after which inventory will be taken and gear will be stored for the winter. Spring tagging will run through approximately 24 March through April, 2018. Following a preseason logistical startup meeting the crew will then depart Ketchikan for the Unuk River, camp will be setup, and soon thereafter traps will be set and smolt tagging will commence. Spawning grounds work is scheduled for the month of August 2017. All dates are subject to change and are weather dependent. All field data will be entered in computer spreadsheets and checked for errors by 30 November, 2017 (Adult and parr data), and 1 June, 2018 (spring smolt data).

An ADF&G Fishery Data Series report will be prepared by 1 June, 2025 summarizing brood year 2016 Chinook salmon harvest contributions, associated data for estimating harvest by gear and time, marked fraction of returning adults, exploitation and survival rates, and all juvenile tagging data.

## RESPONSIBILITIES

Philip Richards, Fisheries Biologist III

**Duties:** This position is responsible for setting up all aspects of the project, including planning, budget, sample design, permits, equipment, personnel, and training, as well as supervises Technicians. Adjusts field sampling priorities as necessary. Responsible for tracking the budget, meeting reporting requirements, analysis, and publication of smolt and harvest contribution data, may assist with work in the field

and will arrange logistics with Frost and field crew. Conducts preseason startup meetings with field crew and Frost, and follows departmental and state policy in all matters.

David Evans, Biometrician III

Duties: Provides input to and approves sampling design. Reviews and provided biometric support for operational plan, data analysis, and final report.

Ed Jones, Salmon Research Coordinator

Duties: This position is the DSF Salmon Research Coordinator for salmon stock assessment and provides program and budget planning oversight. Also reviews the operational plan, data analysis, and final report.

Nathan Frost, Fisheries Biologist I (Juneau)

Duties: This position serves as the assistant project leader and is responsible for project activities from Ketchikan.. Responsible for daily radio call, arranging logistics with field crew and project leader, purchasing supplies, loading and unloading supply planes, proper conduct in the public's eye, and following department guidelines supplied by the project leader. Responsible for supervising field crew, assists with field operations as necessary, makes recommendations on logistics to the project leader, adjusts personnel hours and schedules as appropriate. Enters field data into spreadsheets and edits and summarizes data.

David Dreyer, Fish and Wildlife Technician IV (crew leader)

Duties: This position is responsible for directing all field aspects of the project under directions from the project leader. Will ensure that all crew members are trained in the proper operation of all aspects of the project including boating safety, fish handling, data collection and recording, conduct in the public's eye, and adherence to department policies. Position will be responsible for equipment maintenance and proper operation, fieldwork schedules, scheduling of flights with Frost, and submitting data accurately and timely. With the project leader and Frost, will attempt to resolve as many personnel and administrative items as is possible and is responsible for submitting inventories at the end of the season to Frost. This position is also responsible for reports to be submitted to the project leader weekly, and daily satellite phone calls or emails to Richards and Frost. Position functions as lead technician on the morning set net crew. Follows departmental and state policy in all matters.

Vacant, Fish and Wildlife Technician III.

Duties: This position is responsible for assisting in all aspects of escapement spawning grounds sampling including safe operation of riverboats and all other equipment and various data collection and conduct in the public's eye. Follows departmental and state policy in all matters.

Vacant, Fish and Wildlife Technician III.

Duties: This position is responsible for assisting in all aspects of escapement spawning grounds sampling including safe operation of riverboats and all other equipment

and various data collection and conduct in the public's eye. Follows departmental and state policy in all matters.

Vacant, Fish and Wildlife Technician II.

Duties: This position is responsible for assisting in all aspects of adult tagging and escapement spawning grounds sampling including safe operation of riverboats and all other equipment and various data collection, and conduct in the public's eye. Follows departmental and state policy in all matters.

## REFERENCES CITED

- ADF&G Chinook Salmon Research Team. 2013. Chinook salmon stock assessment and research plan, 2013. Alaska Dept of Fish and Game, Special Publications No. 13-01, Anchorage.
- Bernard, D. R., and J. E. Clark. 1996. Estimating salmon harvest with coded-wire tags. *Canadian Journal of Fisheries and Aquatic Sciences* 53:2323–2332.
- Bernard, D. R., R. P. Marshall, and J. E. Clark. 1998. Planning programs to estimate salmon harvest with coded-wire tags. *Canadian Journal of Fisheries and Aquatic Sciences*, 55: 1983–1995.
- Clark, J. E., B. W. Van Alen, and R. P. Marshall. 1985. Estimated contribution of coded wire tagged releases of Chinook salmon (*Oncorhynchus tshawytscha*) to the commercial fisheries of Southeastern Alaska in 1982. Alaska Department of Fish and Game, Technical Data Report No. 161, Juneau.
- Cochran, W. G. 1977. *Sampling Techniques*, third edition, Wiley and Sons, New York.
- CTC (Chinook Technical Committee). 2014 Annual Report of Catch and Escapement for 2013. Pacific Salmon Commission, Report TCCHINOOK(14)-2. Vancouver, BC.
- Elliott, B. W., and S. J. H. Power. 2016. Production and harvest of Chilkat River Chinook and coho salmon, 2016–2017. Alaska Department of Fish and Game, Regional Operational Plan No SF.1J.2016.16, Anchorage.
- Freeman, G. M., and S.A. McPherson. 2003. Spawning abundance of Chinook salmon in the Chickamin River in 2001. Alaska Department of Fish and Game, Fishery Data Series No. 03-14, Anchorage. <http://www.adfg.alaska.gov/FedAidpdfs/fds03-14.pdf>
- Freeman, G. M., and S.A. McPherson. 2004. Spawning abundance of Chinook salmon in the Chickamin River in 2002. Alaska Department of Fish and Game, Fishery Data Series No. 04-09, Anchorage. <http://www.adfg.alaska.gov/FedAidpdfs/fds04-09.pdf>
- Freeman, G. M., and S.A. McPherson. 2005. Spawning abundance of Chinook salmon in the Chickamin River in 2003. Alaska Department of Fish and Game, Fishery Data Series No. 05-63, Anchorage. <http://www.adfg.alaska.gov/FedAidpdfs/fds05-63.pdf>
- Goodman, L. A. 1960. On the exact variation of products. *Journal of the American Statistical Association* 55: 708–713.
- Hendrich, C., J. L. Weller, S. A. McPherson, and D. R. Bernard. 2008. Optimal Production of Chinook salmon from the Unuk River. Alaska Department of Fish and Game, Fishery Manuscript No. 08-03, Anchorage.
- Jennings, G.B., K. Sundet, and A.E. Bingham. 2015. Estimates of participation, catch, and harvest in Alaska sport fisheries during 2011. Alaska Department of Fish and Game, Fishery Data Series No. 15-04, Anchorage.
- Johnson, T. A. 2014. A mark-recapture experiment to estimate the escapement of Chinook salmon in the Unuk River, 2014. Alaska Department of Fish and Game, Regional Operational Plan No. SF.1J.2014.07, Anchorage.
- Johnson, T. A., and D. G Evans, and. *In prep.* Production of Unuk River Chinook salmon through 2014 from the 1992–2009 broods. Alaska Department of Fish and Game, Fisheries Data Series, Anchorage.
- Jones III, E. L., S. A. McPherson and D. L. Magnus. 1998. A MR experiment to estimate the escapement of Chinook salmon in the Unuk River, 1997. Alaska Department of Fish and Game, Fisheries Data Series No. 98-23, Anchorage.

## REFERENCES CITED (Continued)

- Jones III, E. L., and S. A. McPherson. 1999. A MR experiment to estimate the escapement of Chinook salmon in the Unuk River, 1998. Alaska Department of Fish and Game, Fisheries Data Series No. 99-14, Anchorage.
- Jones III, E. L., and S. A. McPherson. 2000. A MR experiment to estimate the escapement of Chinook salmon in the Unuk River, 1999. Alaska Department of Fish and Game, Fisheries Data Series No. 00-22, Anchorage.
- Jones III, E. L., and S. A. McPherson. 2002. A MR experiment to estimate the escapement of Chinook salmon in the Unuk River, 2000. Alaska Department of Fish and Game, Fisheries Data Series No. 02-17, Anchorage.
- Kissner, P. D. Jr. 1985. A study of Chinook salmon in southeast Alaska. Alaska Department of Fish and Game, Sport Fish Division. Annual report 1984–85, Project F-9-17, 26 (AFS-41).
- Koerner, J. F. 1977. The use of the coded-wire tag injector under remote field conditions. Alaska Department of Fish and Game, Division of Commercial Fisheries, Informational Leaflet No. 172, Juneau.
- McPherson, S. A., D. R. Bernard, M. S. Kelley, P. A. Milligan, and P. Timpany. 1997. Spawning abundance of Chinook salmon in the Taku River in 1996. Alaska Department of Fish and Game, Fishery Data Series No. 97-14, Anchorage. <http://www.adfg.alaska.gov/FedAidPDFs/fms97-14.pdf>
- Pahlke, K. A. 1995. Coded wire tagging studies of Chinook salmon of the Unuk and Chickamin Rivers, Alaska. Alaska Department of Fish and Game, Division of Commercial Fisheries, Alaska Fishery Research Bulletin 2(2): 93–113.
- Pahlke, K. A. 1996. Escapements of Chinook salmon in Southeast Alaska and transboundary rivers in 1992. Alaska Department of Fish and Game, Fishery Data Series No. 93-46, Juneau.
- Pahlke, K. A. 2010. Escapements of Chinook salmon in Southeast Alaska and transboundary rivers in 2008. Alaska Department of Fish and Game, Fishery Data Series No. 10-71, Anchorage.
- Pahlke, K. A. S. A. McPherson and R. P. Marshall. 1996. Chinook salmon research on the Unuk River, 1994. Alaska Department of Fish and Game, Division of Sport Fish, Fishery Data Series No. 96-14, Anchorage.
- Richards, P., T. Johnson, M. Sanguinetti. 2015. Escapements of Chinook salmon in Southeast Alaska and transboundary rivers in 2015. Alaska Department of Fish and Game, Division of Sport Fish, Regional Operational Plan SF.IJ.2015.14, Anchorage.
- Richards, P. 2016. Escapements of Chinook salmon in Southeast Alaska and transboundary rivers in 2016. Alaska Department of Fish and Game, Division of Sport Fish, Regional Operational Plan SF.IJ.2015.14, Anchorage.
- Richards, P. *In prep.* Escapements of Chinook salmon in Southeast Alaska and transboundary rivers in 2017. Alaska Department of Fish and Game, Division of Sport Fish, Regional Operational Plan, Anchorage.
- Thompson, S.K. 1987. Sample size for estimating multinomial proportions. *American Statistician*. 41:42–46.
- Welander, A. D. 1940. A study of the development of the scale of the Chinook salmon (*Oncorhynchus tshawytscha*). Master's thesis, University of Washington, Seattle.
- Weller, J. L., and S. A. McPherson. 2003a. Estimation of the escapement of Chinook salmon in the Unuk River, 2001. Alaska Department of Fish and Game, Division of Sport Fish, Fishery Data Series No. 03-13, Anchorage.
- Weller, J. L., and S. A. McPherson. 2003b. Estimation of the escapement of Chinook salmon in the Unuk River, 2002. Alaska Department of Fish and Game, Division of Sport Fish, Fishery Data Series No.03-15, Anchorage.
- Weller, J. L., and S. A. McPherson. 2004. Estimation of the escapement of Chinook salmon in the Unuk River, 2003. Alaska Department of Fish and Game, Division of Sport Fish, Fishery Data Series No.04-10, Anchorage.
- Weller, J. L., and S. A. McPherson. 2006a. Estimation of the escapement of Chinook salmon in the Unuk River, 2004. Alaska Department of Fish and Game, Division of Sport Fish, Fishery Data Series No.06-07, Anchorage.
- Weller, J. L., and S. A. McPherson. 2006b. Estimation of the escapement of Chinook salmon in the Unuk River, 2005. Alaska Department of Fish and Game, Division of Sport Fish, Fishery Data Series No.06-59, Anchorage.



## **REFERENCES CITED (Continued)**

- Weller, J.L and D. G. Evans. 2009. Estimation of the escapement of Chinook salmon in the Unuk River, 2006. Alaska Department of Fish and Game, Division of Sport Fish, Fishery Data Series No.09-02, Anchorage.
- Weller, J.L., and D. E Evans, and. 2012. Production of Unuk River Chinook salmon through 2009 from the 1992–2006 broods. Alaska Department of Fish and Game, Division of Sport Fish, Fisheries Data Series No. 12-85, Anchorage.
- Weller, J. L., D. G. Evans, and M. T. Brunette. 2012. Production of Unuk River Chinook salmon through 2008 from the 1992–2005 broods. Alaska Department of Fish and Game, Division of Sport Fish, Fisheries Data Series No. 12-04, Anchorage.



## **APPENDIX A**

Appendix A1.—Numbers of Unuk River Chinook salmon fall parr and spring smolt captured and tagged with coded wire tags, 1992 brood year to present.

Brood year	Year tagged	Fall/ spring	Tag code	Dates tagged	Released with adipose clips	Estimated released with valid CWTs and adipose clips
1992	1993	Fall	04-38-03	10/13–10/22/93	10,304	10,263
1992	1993	Fall	04-38-04	10/25/93	439	433
1992	1993	Fall	04-38-05	10/16–10/21/93	3,192	3,093
1992	1994	Spring	04-42-06	5/05–5/23/94	2,642	2,642
1992 brood year total					16,577	16,431
1993	1994	Fall	04-33-49	10/07–10/24/94	1,706	1,700
1993	1994	Fall	04-33-50	10/07–10/22/94	11,152	11,139
1993	1994	Fall	04-35-57	10/22–11/01/94	7,688	7,687
1993	1995	Spring	04-42-13	4/10–5/05/95	3,227	3,227
1993 brood year total					23,773	23,753
1994	1995	Fall	04-35-56	10/07–10/10/95	11,537	11,476
1994	1995	Fall	04-35-58	10/11–10/16/95	11,645	11,645
1994	1995	Fall	04-35-59	10/17–10/24/95	11,100	10,825
1994	1995	Fall	04-42-31	10/25–10/26/95	6,324	6,260
1994	1996	Spring	04-42-07	4/13–4/23/96	6,099	6,099
1994	1996	Spring	04-42-08	4/23–4/27/96	1,357	1,357
1994 brood year total					48,062	47,662
1995	1996	Fall	04-47-12	9/30–9/15/96	24,224	24,224
1995	1996	Fall	04-42-36	10/16–10/19/96	11,200	11,200
1995	1996	Fall	04-42-18	10/20–10/21/96	3,753	3,753
1995	1997	Spring	04-38-29	3/31–4/18/97	12,517	12,517
1995 brood year total					51,694	51,694
1996	1997	Fall	04-47-13	10/04–10/11/97	24,303	24,176
1996	1997	Fall	04-47-14	10/06–10/11/97	22,975	22,583
1996	1997	Fall	04-47-15	10/11–10/20/97	15,396	15,146
1996	1998	Spring	04-46-46	3/29–4/05/98	11,188	11,134
1996	1998	Spring	04-43-39	4/08–4/13/98	5,987	5,987
1996 brood year total					79,849	79,026
1997	1998	Fall	04-01-39	10/04–10/13/98	22,374	22,366
1997	1998	Fall	04-01-40	10/13–10/23/98	11,640	11,522
1997	1999	Spring	04-01-44	4/08–5/01/99	7,948	7,948
1997 brood year total					41,962	41,836
1998	1999	Fall	04-01-42	10/04–10/17/99	16,661	16,661
1998	2000	Spring	04-02-56	4/01–4/27/00	11,124	11,124
1998	2000	Spring	04-02-57	4/29–5/4/00	2,209	2,209
1998 brood year total					29,994	29,994
1999	2000	Fall	04-03-74	10/06–10/20/00	21,853	21,853
1999	2000	Fall	04-02-88	10/20–10/29/00	10,072	10,072
1999	2001	Spring	04-01-45	4/2–4/23/01	16,561	16,561
1999 brood year total					48,486	48,486

-continued-

Appendix A1.–Page 2 of 3.

Brood year	Year tagged	Fall/ spring	Tag code	Dates tagged	Released with adipose clips	Estimated released with valid CWTs and adipose clips
2000	2001	Fall	04-02-92	9/29–10/05/01	10,950	10,950
2000	2001	Fall	04-04-57	10/05–10/09/01	11,231	11,231
2000	2001	Fall	04-04-58	10/09–10/14/01	11,223	11,200
2000	2001	Fall	04-04-60	10/14–10/23/01	10,990	10,990
2000	2002	Spring	04-05-38	4/4–4/24/02	10,904	10,904
2000	2002	Spring	04-05-39	4/25–4/26/02	1,067	1,067
2000 brood year total					56,365	56,342
2001	2002	Fall	04-05-23	9/28–10/05/02	11,402	11,402
2001	2002	Fall	04-05-24	10/05–10/13/02	11,538	11,538
2001	2002	Fall	04-05-25	10/13–10/17/02	11,778	11,778
2001	2002	Fall	04-05-26	10/17–10/20/02	11,425	11,425
2001	2002	Fall	04-46-52	10/20–10/25/02	8,403	8,403
2001	2003	Spring	04-08-07	4/8–5/10/03	11,354	11,354
2001	2003	Spring	04-08-03	5/10/2003	483	483
2001 brood year total					66,383	66,383
2002	2003	Fall	04-08-42	9/29–10/10/03	23,255	23,255
2002	2003	Fall	04-08-10	10/10–10/14/03	11,464	11,464
2002	2003	Fall	04-04-61	10/14–10/18/03	9,779	9,779
2002	2004	Spring	04-09-75	03/29–04/10/04	11,666	11,666
2002	2004	Spring	04-09-76	04/10–04/17/04	2,730	2,730
2002 brood year total					58,894	58,894
2003	2004	Fall	04-09-77	9/19–10/03/04	11,789	11,789
2003	2004	Fall	04-09-78	10/03–10/19/04	11,417	11,417
2003	2004	Fall	04-09-81	10/19–10/21/04	3,923	3,923
2003	2005	Spring	04-09-80	4/10–4/28/05	8,618	8,585
2003 brood year total					35,747	35,714
2004	2005	Fall	04-11-55	9/24–10/18/05	23,330	23,330
2004	2005	Fall	04-11-56	10/18/05	941	941
2004	2006	Spring	04-11-52	4/2–4/23/06	16,371	16,269
2004 brood year total					40,642	40,540
2005	2006	Fall	04-13-05	10/3–10/12/06	23,406	23,406
2005	2006	Fall	04-11-51	10/12–10/19/06	9,393	9,393
2005	2007	Spring	04-12-81	4/9–4/27/07	4,731	4,721
2005 brood year total					37,530	37,520
2006	2007	Fall	04-12-82	9/30–10/03/07	11,777	11,777
2006	2007	Fall	04-12-83	10/03–10/07/07	11,716	11,716
2006	2007	Fall	04-12-84	10/07–10/13/07	11,756	11,756
2006	2007	Fall	04-12-85	10/13–10/21/07	9,840	9,840
2006	2008	Spring	04-14-62	4/19–4/27/08	10,489	10,489
2006 brood year total					55,578	55,578
2007	2008	Fall	04-14-65	10/03–10/21/08	16,595	16,595
2007	2009	Spring	04-14-63	4/17–5/02/09	5,578	5,573
2007 brood year total					22,173	22,168

-continued-

Appendix A1.–Page 3 of 3.

Brood year	Year tagged	Fall/ spring	Tag code	Dates tagged	Released with adipose clips	Estimated released with valid CWTs and adipose clips
2008	2009	Fall	04-13-87	9/28–10/01/09	10,963	10,933
2008	2009	Fall	04-13-88	10/02–10/05/09	11,289	11,289
2008	2009	Fall	04-13-89	10/05–10/09/09	11,556	11,556
2008	2009	Fall	04-13-85	10/09–10/14/09	11,149	11,149
2008	2010	Spring	04-13-86	4/9–4/24/10	8,190	8,190
2008 brood year total					53,147	53,117
2009	2010	Fall	04-13-90	9/26–10/17/10	11,630	11,619
2009	2010	Fall	04-09-95	10/17–10/22/10	4,117	4,115
2009	2011	Spring	04-09-99	4/11–4/27/11	10,216	10,216
2009 brood year total					25,963	25,950
2010	2011	Fall	04-09-93	10/05–10/09/09	11,466	11,466
2010	2011	Fall	04-09-94	10/09–10/14/09	2,211	2,211
2010	2012	Spring	04-14-66	4/16–4/28/12	3,942	3,942
2010 brood year total					17,619	17,619
2011	2012	Fall	04-09-91	10/03–10/08/12	10,364	10,364
2011	2012	Fall	04-14-67	9/27–10/10/12	3,292	3,292
2011	2013	Spring	04-09-90	4/13–4/25/13	6,176	6,140
2011 brood year total					19,832	17,796
2012	2013	Fall	04-15-35	9/30-10/3/13	12,070	12,070
2012	2013	Fall	04-09-92	10/3/2013	464	464
2012	2014	Spring	04-15-36	4/12-4/29/14	12,289	12,289
2012 brood year total					24,823	24,823
2013	2014	Fall	04-15-38	10/8-10/24/14	4,218	4,218
2013	2015	Spring	04-15-37	4/1-4/28/15	10,817	10,817
2013 brood year total					15,035	15,035
2014	2015	Fall	04-15-40	9/28-10/20/15	10,524	10,511
2014	2016	Spring	04-15-39	4/4-4/21/16	4,003	4,003
2014 brood year total					14,527	14,514
2015	2016	Fall	04-15-41	9/30-10/4/16	10,342	10,342
2015	2016	Fall	04-38-98	10/4-10/9/16	11,306	11,306
2015	2016	Fall	04-38-96	10/8-10/14/16	10,905	10,905
2015	2016	Fall	4-38-99	10/14-10/22/16	10,484	10,484
2015	2017	Spring	-	-	-	-
2015 brood year total					-	46,037

Appendix A2.–Data pertaining to adipose clip and coded wire tag fractions by brood year (1992-2011) for Unuk River Chinook salmon.

Brood Year	Age	Year Sampled	Sampled	Adipose Clips	Sacrificed	CWTs			% Clips w/CWTs	% Adipose Clips	% CWTs <sup>a</sup>
						Fall	Spring	Total			
1992	1.2	1996	33	0	0	0	0	0	–	0.0	–
1992	1.3	1997	436	11	11	10	1	11	100.0	2.5	2.5
1992	2.2	1997	1	0	0	0	0	0	–	0.0	–
1992	1.4	1998	324	15	11	4	4	8	72.7	4.6	3.4
1992	1.5	1999	1	0	0	0	0	0	–	0.0	–
1992 brood year total			795	26	22	14	5	19	86.4	3.3	2.8
1993	1.1	1996	4	1	1	1	0	1	100.0	25.0	25.0
1993	1.2	1997	300	35	35	28	3	31	88.6	11.7	10.3
1993	1.3	1998	736	63	48	36	8	44	91.7	8.6	7.8
1993	2.2	1998	1	0	0	0	0	0	–	0.0	–
1993	1.4	1999	325	34	19	14	4	18	94.7	10.5	9.9%
1993	1.5	2000	9	0	0	0	0	0	–	0.0	–
1993 brood year total			1,375	133	103	79	15	94	91.3	9.7	8.8
1994	1.1	1997	56	4	4	2	2	4	100.0	7.1	7.1
1994	1.2	1998	311	31	28	14	11	25	89.3	10.0	8.9
1994	2.1	1998	1	0	0	0	0	0	–	0.0	–
1994	1.3	1999	421	45	14	6	5	11	78.6	10.7	8.4
1994	1.4	2000	247	12	7	3	3	6	85.7	4.9	4.2
1994	1.5	2001	4	0	0	0	0	0	–	0.0	–
1994 brood year total			1,040	92	53	25	21	46	86.8	8.8	7.7
1995	1.1	1998	81	15	14	8	5	13	92.9	18.0	17.2
1995	0.2	1998	1	0	0	0	0	0	–	0.0	–
1995	1.2	1999	462	54	45	29	16	45	100.0	11.7	11.7
1995	1.3	2000	742	77	20	9	7	16	80.0	10.4	8.3%
1995	1.4	2001	512	53	19	12	7	19	100.0	10.4	10.4%
1995	1.5	2002	6	1	1	1	0	1	100.0	16.7	16.7
1995	2.4	2002	1	0	0	0	0	0	–	0.0	–
1995 brood year total			1,805	200	99	59	35	94	94.9	11.1	10.5
1996	0.1	1998	2	0	0	0	0	0	–	0.0	–
1996	1.1	1999	65	6	6	4	1	5	83.3	9.2	7.7
1996	1.2	2000	541	69	49	33	14	47	95.9	12.8	12.2
1996	1.3	2001	1,177	137	43	27	11	38	88.4	11.6	10.3
1996	1.4	2002	551	58	15	11	4	15	100.0	10.5	10.5
1996	1.5	2003	7	1	0	0	0	0	–	14.3	–
1996 brood year total			2,343	271	113	75	30	105	92.9	11.6	10.7

-continued-

Appendix A2.–Page 2 of 4.

Brood Year	Age	Year Sampled	Sampled	Adipose Clips	Sacrificed	CWTs			% Clips w/CWTs	% Adipose Clips	% CWTs
						Fall	Spring	Total			
1997	1.1	2000	12	1	1	0	1	1	100.0	8.3	8.3
1997	1.2	2001	189	26	23	12	5	17	73.9	13.8	10.2
1997	0.4	2002	1	0	0	0	0	0	–	0.0	–
1997	1.3	2002	598	56	7	4	3	7	100.0	9.4	9.4
1997	2.2	2002	1	0	0	0	0	0	–	0.0	–
1997	1.4	2003	379	31	6	4	0	4	66.7	8.2	5.5
1997	1.5	2004	6	2	0	0	0	0	–	33.3	–
1997 brood year total			1,186	116	37	20	9	29	78.4	9.8	7.7
1998	1.1	2001	31	3	3	0	3	3	100.0	9.7	9.7
1998	1.2	2002	419	26	21	12	9	21	100.0	6.2	6.2
1998	0.4	2003	1	0	0	0	0	0	–	0.0	–
1998	1.3	2003	1,112	117	28	11	17	28	100.0	10.5	10.5
1998	2.2	2003	1	0	0	0	0	0	–	0.0	–
1998	1.4	2004	542	51	1	1	0	1	100.0	9.4	9.4
1998	1.5	2005	6	1	0	0	0	0	–	16.7	–
1998 brood year total			2,112	198	53	24	29	53	100.0	9.4	9.4
1999	0.2	2002	1	0	0	0	0	0	–	0.0	–
1999	1.1	2002	3	0	0	0	0	0	–	0.0	–
1999	1.2	2003	147	15	13	7	5	12	92.3	10.2	9.4
1999	1.3	2004	396	49	3	2	1	3	100.0	12.4	12.4
1999	2.3	2005	4	0	0	0	0	0	–	0.0	–
1999	1.4	2005	200	15	6	1	3	4	66.7	7.5	5.0
1999	1.5	2006	1	0	0	0	0	0	–	0.0	–
1999 brood year total			752	79	22	10	9	19	86.4	10.5	9.1
2000	1.1	2003	72	4	4	2	2	4	100.0	5.6	5.6
2000	1.2	2004	804	62	52	29	22	51	98.1	7.7	7.6%
2000	2.2	2005	1	1	1	1	0	1	100.0	100.0	100.0
2000	1.3	2005	1,158	107	15	10	3	13	86.7	9.2	8.0
2000	1.4	2006	529	46	2	2	0	2	100.0	8.7	8.7
2000	2.3	2006	1	0	0	0	0	0	–	0.0	–
2000	1.5	2007	8	0	0	0	0	0	–	0.0	–
2000 brood year total			2,573	220	74	44	27	71	95.9	8.6%	8.2%
2001	1.1	2004	36	7	7	5	2	7	100.0	19.4	19.4
2001	1.2	2005	186	20	17	11	5	16	94.1	10.8	10.1
2001	1.3	2006	618	57	7	5	1	6	85.7	9.2	7.9
2001	2.2	2006	1	0	0	0	0	0	–	0.0	–
2001	1.4	2007	272	29	4	2	2	4	100.0	10.7	10.7
2001	2.3	2007	2	0	0	0	0	0	–	0.0	–
2001	1.5	2008	4	1	1	0	0	0	0.0	25.0	0.0
2001 brood year total			1,119	114	36	23	10	33	91.7	10.2	9.3

-continued-



Appendix A2.–Page 3 of 4.

Brood Year	Age	Year Sampled	Sampled	Adipose Clips	Sacrificed	CWTs			% Clips w/CWTs	% Adipose Clips	% CWTs
						Fall	Spring	Total			
2002	1.1	2005	70	5	5	1	1	2	40.0	7.1	2.9
2002	1.2	2006	794	58	46	21	14	35	76.1	7.3	5.6
2002	1.3	2007	1,266	120	19	10	4	14	73.7	9.5	7.0
2002	1.4	2008	423	48	4	3	0	3	75.0	11.3	8.5
2002	1.5	2009	4	1	0	0	0	0	–	25.0	–
2002 brood year total			2,557	232	74	35	19	54	73.0	9.1	6.6
2003	1.1	2006	28	2	2	1	1	2	100.0	7.1	7.1
2003	1.2	2007	218	22	21	8	10	18	85.7	10.1	8.7
2003	2.1	2007	1	0	0	0	0	0	–	0.0	–
2003	1.3	2008	324	30	2	1	1	2	100.0	9.3	9.3
2003	1.4	2009	151	14	3	1	2	3	100.0	9.3	9.3
2003	2.3	2009	1	0	0	0	0	0	–	0.0	–
2003	1.5	2010	3	0	0	0	0	0	–	0.0	–
2003 brood year total			726	68	28	11	14	25	89.3	9.4	8.4
2004	0.2	2007	1	0	0	0	0	0	–	0.0	–
2004	0.2	2007	1	0	0	0	0	0	–	0.0%	–
2004	1.1	2007	38	5	5	2	3	5	100.0	13.2	13.2%
2004	0.3	2008	1	0	0	0	0	0	–	0.0	–
2004	1.2	2008	216	18	14	4	4	8	57.1	8.3	4.8
2004	1.3	2009	581	57	15	4	5	9	60.0	9.8	5.9
2004	2.3	2010	1	0	0	0	0	0	–	0.0	–
2004	1.4	2010	161	7	2	1	1	2	100.0	4.3	4.3
2004	1.5	2011	1	0	0	0	0	0	–	0.0	–
2004 brood year total			1,000	87	36	11	13	24	66.7	8.7	5.8
2005	0.1	2007	1	0	0	0	0	0	–	0.0	–
2005	1.1	2008	25	2	2	2	0	2	100.0	8.0	8.0
2005	1.2	2009	582	44	43	20	16	36	83.7	7.6	6.3
2005	2.2	2010	1	0	0	0	0	0	–	0.0	–
2005	1.3	2010	663	51	7	5	1	6	85.7	7.7	6.6
2005	1.4	2011	143	16	2	2	0	2	100.0	11.2	11.2
2005	1.5	2012	0	0	0	0	0	0	–	–	–
2005 brood year total			1,415	113	54	29	17	46	85.2	8.0	6.8
2006	1.1	2009	20	2	2	1	0	1	50.0	10.0	5.0
2006	0.3	2010	1	0	0	0	0	0	–	0.0	–
2006	1.2	2010	222	13	12	7	3	10	83.3	5.9	4.9
2006	1.3	2011	354	17	5	5	0	5	100.0	4.8	4.8
2006	1.4	2012	44	4	3	2	1	3	100.0	9.1	9.1
2006	1.5	2013	–	–	–	–	–	–	–	–	–
2006 brood year total			641	36	22	15	4	19	86.4	5.6	4.9
2007	1.1	2010	23	1	1	1	0	1	100.0	4.3	4.3
2007	1.2	2011	172	5	5	3	1	4	80.0	2.9	2.3
2007	1.3	2012	199	8	2	1	1	2	100.0	4.0	4.0
2007	1.4	2013	44	3	1	0	0	0	–	6.8	–
2007	1.5	2014	–	–	–	–	–	–	–	–	–
2007 brood year total			438	17	9	5	2	7	77.8	3.9	3.0

-continued-

Appendix A2.–Page 4 of 4.

Brood Year	Age	Year Sampled	Sampled	Adipose Clips	Sacrificed	CWTs			% Clips w/CWTs	% Adipose Clips	% CWTs
						Fall	Spring	Total			
2008	1.1	2011	11	0	0	0	0	0	–	–	–
2008	1.2	2012	117	16	16	5	10	15	93.8	13.7	12.8
2008	1.3	2013	152	16	4	3	1	4	100	10.5	10.5
2008	1.4	2014	47	3	1	0	0	0	–	6.4	–
2008	1.5	2015	0	0	0	0	0	0	–	–	–
2008 brood year total			327	35	21	8	11	19	90.5	10.7	9.7
2009	1.1	2012	23	1	1	0	1	1	100.0	4.3	4.3
2009	1.2	2013	90	3	2	0	1	1	50.0	3.3	1.7
2009	1.3	2014	173	12	5	2	3	5	100.0	6.9	6.9
2009	1.4	2015	35	0	0	0	0	0	–	–	–
2009	1.5	2016	–	–	–	–	–	–	–	–	–
2009 Brood year total			321	16	8	2	5	7	87.5	5.0	4.4
2010	1.1	2013	10	0	0	0	0	0	–	0.0	–
2010	1.2	2014	119	5	5	2	3	5	100.0	4.2	4.2
2010	1.3	2015	258	8	1	1	0	1	100.0	3.1	3.1
2010	1.4	2016	47	1	1	1	0	1	100.0	2.1	–
2010	1.5	2017	–	–	–	–	–	–	–	–	–
2010 Brood year total			434	14	7	4	3	7	100.0	3.2	3.2
2011	1.1	2014	9	4	3	2	1	3	100.0	33.3	33.3
2011	1.2	2015	146	6	4	1	2	3	75	4.1	3.1
2011	1.3	2016	–	–	–	–	–	–	–	–	–
2011	1.4	2017	–	–	–	–	–	–	–	–	–
2011	1.5	2018	–	–	–	–	–	–	–	–	–
2011 Brood year total			155	10	8	3	3	6	75	6.5	4.8
2012	1.1	2015	4	1	1	0	1	1	100	25	25
2012	1.2	2016	63	3	2	1	1	2	100	4.8	54.5
2012	1.3	2017	–	–	–	–	–	–	–	–	–
2012	1.4	2018	–	–	–	–	–	–	–	–	–
2012	1.5	2019	–	–	–	–	–	–	–	–	–
2012 Brood year total			xxx	xx	x	x	x	x	xx	xx	xx
2013	1.1	2016	38	7	3	0	3	3	100	18.4	18.4
2013	1.2	2017	–	–	–	x	–	–	–	–	–
2013	1.3	2018	–	–	–	–	–	–	–	–	–
2013	1.4	2019	–	–	–	–	–	–	–	–	–
2013	1.5	2020	–	–	–	–	–	–	–	–	–
2013 Brood year total			xxx	xx	x	x	x	x	xx	xx	xx

<sup>a</sup>  $\hat{\theta}_i$  in Equation 17

*Note:* An en-dash (–) either indicates that the quantity could not be calculated (division by zero), or the data have not been collected yet.

Appendix A3.—Statistics used to estimate the harvest of Chinook salmon adults returning to the Unuk River from the 2016 brood<sup>a,b,c</sup>.

$\theta = 0.086$ (x 350,000 smolt corresponds to 30,000 smolt tagged; $G(\theta^{-1}) = 0.030$ (corresponding to 430 adults sampled on spawning ground))										
Age	Stratum	$\pi_i$	$\phi_i$	$\lambda_i$	$r_i$	$m_i$	$G(p_i)$	$G(N_i)$	$SE(r_i)$	$P(m_i > 0)$
1.2	Trad Troll 1	3.7440E-06	0.31	0.98	4	0.1	8.7	0	13	0.11
	Trad Troll 3	1.09E-05	0.56	0.98	7	0.3	2.9	0	12	0.28
	Trad Troll 4	7.31E-06	0.28	0.98	9	0.2	4.5	0	20	0.20
	Sp Troll	5.47E-05	0.58	0.98	34	1.7	0.6	0	26	0.81
	Drift Gillnet	8.64E-05	0.20	0.98	153	2.6	0.4	0	97	0.93
	Sport Ketch	2.24E-05	0.38	0.98	21	0.7	1.4	0.085	25	
	Sport Sitka	2.44E-06	0.38	0.98	2	0.1	13.2	0.040	8	0.07
	Sport Craig	6.27E-06	1.00	0.98	2	0.2	4.9	0.060	5	0.17
	PNP	1.98E-05	0.26	0.98	27	0.6	1.6	0.000	35	0.45
	Other	5.03E-05	0.58	0.98	31	1.5	0.6	0.000	25	0.78
1.3	Trad Troll 1	9.45E-05	0.31	0.98	109	2.9	0.3	0	66	0.94
	Trad Troll 3	8.19E-05	0.56	0.98	53	2.5	0.4	0	33	0.91
	Trad Troll 4	7.15E-05	0.28	0.98	92	2.2	0.5	0	63	0.88
	Trad Troll 5–7	7.92E-05	0.32	0.98	90	2.4	0.4	0	59	0.91
	Sp Troll	5.22E-04	0.58	0.98	321	16.0	0.1	0	96	1.00
	Drift Gillnet	6.11E-05	0.20	0.98	109	1.9	0.5	0	81	0.84
	Sport Ketch	5.35E-05	0.38	0.98	50	1.6	0.6	0.09	40	0.80
	Sport Sitka	3.19E-05	0.38	0.98	30	1.0	1.0	0.04	30	0.62
	Sport Craig	1.51E-05	1.00	0.98	5	0.5	2.0	0.06	7	0.36
	PNP	6.86E-05	0.26	0.98	94	2.1	0.5	0	66	
	Other	6.42E-05	0.58	0.98	40	2.0	0.5	0	28	0.85
1.4	Trad Troll 1	4.78E-05	0.31	0.98	55	1.5	0.7	0	46	0.76
	Trad Troll 3	1.24E-05	0.56	0.98	8	0.4	2.6	0	13	0.31
	Sp Troll	1.46E-04	0.58	0.98	90	4.5	0.2	0	44	0.99
	Drift Gillnet	1.35E-05	0.20	0.98	24	0.4	2.4	0	37	0.33
	Sport Ketch	4.83E-05	0.38	0.98	45	1.5	0.7	0.085	38	0.77
	Sport Sitka	3.74E-06	0.38	0.98	3	0.1	8.6	0.040	10	0.11
	PNP	1.2281E-05	0.26	0.98	17	0.4	2.7	0	27	0.31
	Other	8.5125E-06	0.58	0.98	5	0.3	3.7	0	10	0.23
Total					1532	52				

<sup>a</sup> See text for assumptions regarding data inputs.

<sup>b</sup> 90% relative precision of the estimate of harvest of brood year 2016 Unuk River Chinook salmon is anticipated to be 25.74%.

<sup>c</sup> Column headings are as defined in Bernard and Clark (1996).



## **APPENDIX B**

**Sport Fish Division CWT Daily Log Form**

**Date** \_\_\_\_\_

**Tagging Site:** \_\_\_\_\_

**Species:** \_\_\_\_\_

**Machine Serial #:** \_\_\_\_\_

**Today's Tag Code:** \_\_\_\_\_

a	Machine ending number	_____
b	Machine beginning number	_____
c	# of Injections (a-b)	_____
d	Retags/Morts/Etc.	_____
e	# tagged fish for this day (c-d)	_____
f	Overnight mortality	_____
g	Total tagged fish (e-f)	_____

**Recaptures from Minnow Traps:**

h	# with CWTs	_____
i	# without CWTs	_____
j	Total # recaptures (h+i)	_____

**24-Hour Retention:**

k	# with CWTs	_____
l	# without CWTs	_____
m	Total # tested (k+l)	_____
n	Short term retention % (k/m)	_____
o	Valid tagged and released (n x g )	_____

**Cumulative Tagged and Released (code specific)** \_\_\_\_\_

[illegible]

## Appendix B3.—Unuk River spawning grounds age-sex-length form, 2017.

Location: \_\_\_\_\_

Year: 2017

Stream code: \_\_\_\_\_

Species: \_\_\_\_\_

[illegible]



Appendix B4.–Coded wire tag (CWT) anadromous stream numbers, coded wire tag sample numbers, and age-sex-length (ASL) stream codes for the Unuk River and its tributaries.

Location	CWT Anadromous Stream #	Sample numbers	ASL stream code
Unuk River	101-75-10300	06930xxx	101-75-030
Boulder Creek	101-75-10300-BOULDER	0693975x	101-75-030-BOULDER
Boundary Creek	101-75-10300-2999	06939xxx	101-75-30B
Chum Creek	101-75-10300-CHUM	069305xx	101-75-030-CHUM
Clear Creek	101-75-10300-2014-3004	06933xxx	101-75-30C
Cripple Creek	101-75-10300-2030	06938xxx	101-75-30Q
Cutthroat Slough	101-75-10300-CUTTHROAT	069325xx	101-75-030-CUTTHROAT
Eulachon River	101-75-10150	06932xxx	101-75-015
Genes Lake Creek	101-75-10300-2022	06937xxx	101-75-30G
Grizzly Slough	101-75-10300-GRIZZLY	069315xx	101-75-030-GRIZZLY
Hell Roaring Creek	101-75-10300-HELLROARING	069395xx	101-75-030-HELLROARING
Kerr Creek	101-75-10300-2019	06936xxx	101-75-30K
Lake Creek	101-75-10300-2014	06934xxx	101-75-30L
Rockface	101-75-10300-ROCKFACE	069335xx	101-75-030-ROCKFACE

Alaska Department of Fish and Game

Coded Wire Tag Sampling Form

Hatchery Rack and Escapement Survey  
Southeast Region

SAMPLE NUMBER:

9

PROJECT CODE (TAG LAB USE ONLY)

PAGE

OF

PAGES

HARVEST TYPE:

(circle one) hatchery-rack

escapement-survey

SURVEY SITE: \_\_\_\_\_

SAMPLE TYPE:

random select

SAMPLER: \_\_\_\_\_

DATE SAMPLED:

9

SAMPLING INFORMATION

THIS BOX IS TO BE COMPLETED ONLY  
FOR RANDOM SAMPLES

SPECIES (CODE)	TOTAL # FISH COUNTED	# ADIPOSE CLIPS SEEN	WERE ALL SAMPLED?
(410)CHIN		y n	
(411)JACK		y n	
CHIN-ONLY			
(420)SOCK		y n	
(430)COHO		y n	
(440)PINK		y n	
(450)CHUM		y n	
(540)STHD		y n	

COMMENTS

AREA INFORMATION (DISTRICT - SUBDISTRICT)

DISTRICT	SUBDISTRICT
101-	106- 111- 116- 157- 191-
102-	107- 112- 150- 181- 192-
103-	108- 113- 152- 182-
104-	109- 114- 154- 183-
105-	110- 115- 156- 189-
OTHER DISTRICTS	

NAME OF PLACE SURVEYED: (NAME OF HATCHERY OR STREAM)

WATER TYPE: saltwater freshwater

ANADROMOUS  
STREAM#  
(FRESHWATER-  
ONLY)

HEAD RECOVERY INFORMATION

HEAD NUMBER	SPECIES CODE	FORK LENGTH (mid-eye to fork in mm)	CLIP	SEX
<input checked="" type="checkbox"/> 1				
<input type="checkbox"/> 2				
<input type="checkbox"/> 3				
<input type="checkbox"/> 4				
<input type="checkbox"/> 5				
<input type="checkbox"/> 6				
<input type="checkbox"/> 7				
<input type="checkbox"/> 8				
<input type="checkbox"/> 9				
<input type="checkbox"/> 10				
<input type="checkbox"/> 11				
<input type="checkbox"/> 12				
<input type="checkbox"/> 13				
<input type="checkbox"/> 14				
<input type="checkbox"/> 15				
<input type="checkbox"/> 16				
<input type="checkbox"/> 17				
<input type="checkbox"/> 18				
<input type="checkbox"/> 19				
<input type="checkbox"/> 20				

T:\FORMS\RAKSE96.VSD 4/96

## **APPENDIX C**

The expansion factor provides a means of predicting escapement in years where only an index count of the escapement is available, i.e. no weir counts or mark-recapture experiments were conducted. The expansion factor is the average over several years of the ratio of the escapement estimate (or weir count) to the index count.

#### Systems where escapement is known

On systems where escapement can be completely enumerated with weirs or other complete counting methods, the expansion factor is an estimate of the expected value of the “population” of annual expansion factors ( $\pi$ ’s) for that system:

$$\bar{\pi} = \frac{\sum_{y=1}^k \pi_y}{k} \quad (1)$$

where  $\pi_y = N_y / C_y$  is the observed expansion factor in year  $y$ ,  $N_y$  is the known escapement in year  $y$ ,  $C_y$  is the index count in year  $y$ , and  $k$  is the number of years for which these data are available to calculate an annual expansion factor.

The estimated variance for expansion of index counts needs to reflect two sources of uncertainty for any predicted value of  $\pi$ , ( $\pi_p$ ). First is an estimate of the process error ( $var(\pi)$ )-the variation across years in the  $\pi$ ’s, reflecting, for example, weather or observer-induced effects on how many fish are counted in a survey for a given escapement), and second is the sampling variance of  $\bar{\pi}$  ( $var(\bar{\pi})$ ), which will decline as we collect more data pairs.

The variance for prediction will be estimated (Neter et al. 1990):

$$\hat{var}(\pi_p) = \hat{var}(\pi) + \hat{var}(\bar{\pi}) \quad (2)$$

where

$$\hat{var}(\pi) = \frac{\sum_{y=1}^k (\pi_y - \bar{\pi})^2}{k - 1} \quad (3)$$

and

$$\hat{var}(\bar{\pi}) = \frac{\sum_{y=1}^k (\pi_y - \bar{\pi})^2}{k(k - 1)} \quad (4)$$

such that

$$\hat{var}(\pi_p) = \frac{\sum_{y=1}^k (\pi_y - \bar{\pi})^2}{k - 1} + \frac{\sum_{y=1}^k (\pi_y - \bar{\pi})^2}{k(k - 1)} \quad (5)$$

#### Systems where escapement is estimated

On systems where escapement is estimated, the expansion factor is an estimate of the expected value of the “population” of annual expansion factors ( $\pi$ ’s) for that system:

-continued-

$$\bar{\pi} = \frac{\sum_{y=1}^k \hat{\pi}_y}{k} \quad (6)$$

where  $\hat{\pi}_y = \hat{N}_y / C_y$  is the estimate of the expansion factor in year  $y$ ,  $\hat{N}_y$  is the estimated escapement in year  $y$ , and other terms are as described above.

The variance for prediction will again be estimated:

$$\hat{var}(\pi_p) = \hat{var}(\pi) + \hat{var}(\bar{\pi}) \quad (7)$$

The estimate of  $var(\pi)$  should again reflect only process error. Variation in  $\hat{\pi}$  across years, however, represents process error plus measurement error within years (e.g. the mark-recapture induced error in escapement estimation) and is described by the relationship (Mood et al. 1974):

$$V(\hat{\pi}) = V[E(\hat{\pi})] + E[V(\hat{\pi})] \quad (8)$$

This relationship can be rearranged to isolate process error, that is:

$$V[E(\hat{\pi})] = V[\hat{\pi}] - E[V(\hat{\pi})] \quad (9)$$

An estimate of  $var(\pi)$  representing only process error therefore is:

$$\hat{var}(\pi) = \hat{var}(\hat{\pi}) - \frac{\sum_{y=1}^k \hat{var}(\hat{\pi}_y)}{k} \quad (10)$$

where  $\hat{var}(\hat{\pi}_y) = \hat{var}(\hat{N}_y) / C_y^2$  and  $\hat{var}(\hat{N}_y)$  is obtained during the experiment when  $N_y$  is estimated.

We can calculate:

$$\hat{var}(\hat{\pi}) = \frac{\sum_{y=1}^k (\hat{\pi}_y - \bar{\pi})^2}{k-1} \quad (11)$$

and we can estimate  $var(\bar{\pi})$  similarly to as we did above:

$$\hat{var}(\bar{\pi}) = \frac{\sum_{y=1}^k (\hat{\pi}_y - \bar{\pi})^2}{k(k-1)} \quad (12)$$

where both process and measurement errors need to be included.

For large  $k$  ( $k > 30$ ), equations (11) and (12) provide reasonable parameter estimates, however for small  $k$  the estimates are imprecise and may result in negative estimates of variance when the results are applied as in equation (7).

-continued-

Because  $k$  is typically  $< 10$ , we will estimate  $var(\hat{\pi})$  and  $var(\bar{\pi})$  using parametric bootstrap techniques Efron and Tibshirani (1993). The sampling distributions for each of the  $\hat{\pi}_y$  are modeled using Normal distributions with means  $\hat{\pi}_y$  and variances  $\hat{var}(\hat{\pi}_y)$ . At each bootstrap iteration, a bootstrap value  $\hat{\pi}_{y(b)}$  is drawn from each of these Normal distributions and the bootstrap value  $\hat{\pi}_{(b)}$  is randomly chosen from the  $k$  values of  $\hat{\pi}_{y(b)}$ . Then, a bootstrap sample of size  $k$  is drawn from the  $k$  values of  $\hat{\pi}_{y(b)}$  by sampling with replacement, and the mean of this bootstrap is the bootstrap value  $\bar{\pi}_{(b)}$ . This procedure is repeated  $B = 1,000,000$  times. We can then estimate  $var(\hat{\pi})$  using:

$$\hat{var}_B(\hat{\pi}) = \frac{\sum_{b=1}^B (\hat{\pi}_{(b)} - \overline{\hat{\pi}_{(b)}})^2}{B-1} \quad (13)$$

where

$$\overline{\hat{\pi}_{(b)}} = \frac{\sum_{b=1}^B \hat{\pi}_{(b)}}{B} \quad (14)$$

and we can calculate  $var_B(\bar{\pi})$  using equations (13) and (14) with appropriate substitutions. The variance for prediction is then estimated:

$$\hat{var}(\pi_p) = \hat{var}_B(\hat{\pi}) - \frac{\sum_{y=1}^k \hat{var}(\hat{\pi}_y)}{k} + \hat{var}_B(\bar{\pi}) \quad (15)$$

As the true sampling distributions for the  $\hat{\pi}_y$  are typically skewed right, using a Normal distribution to approximate these distributions in the bootstrap process will result in estimates of  $var(\hat{\pi})$  and  $var(\bar{\pi})$  that are biased slightly high, but simulation studies using values similar to those realized for this application indicated that the bias in equation (15) is  $< 1\%$ .

### Predicting Escapement

In years when an index count ( $C_p$ ) is available but escapement ( $N_p$ ) is not known, it can be predicted:

$$\hat{N}_p = \bar{\pi} C_p \quad (16)$$

and

$$\hat{var}(\hat{N}_p) = C_p^2 \hat{var}(\pi_p) \quad (17)$$