

Regional Information Report No. 4K26-08

**North Alaska Peninsula Salmon Management Plan,
2026**

by

Charles W. Russell

June 2026

Alaska Department of Fish and Game

Division of Commercial Fisheries



Symbols and Abbreviations

The following symbols and abbreviations, and others approved for the Système International d'Unités (SI), are used without definition in the following reports by the Divisions of Sport Fish and of Commercial Fisheries: Fishery Manuscripts, Fishery Data Series Reports, Fishery Management Reports, and Special Publications. All others, including deviations from definitions listed below, are noted in the text at first mention, as well as in the titles or footnotes of tables, and in figures or figure captions.

Weights and measures (metric)		General		Mathematics, statistics	
centimeter	cm	Alaska Administrative Code	AAC	<i>all standard mathematical signs, symbols and abbreviations</i>	
deciliter	dL	all commonly accepted abbreviations	e.g., Mr., Mrs., AM, PM, etc.	alternate hypothesis	H_A
gram	g	all commonly accepted professional titles	e.g., Dr., Ph.D., R.N., etc.	base of natural logarithm	e
hectare	ha	at	@	catch per unit effort	CPUE
kilogram	kg	compass directions:		coefficient of variation	CV
kilometer	km	east	E	common test statistics	(F, t, χ^2 , etc.)
liter	L	north	N	confidence interval	CI
meter	m	south	S	correlation coefficient	
milliliter	mL	west	W	(multiple)	R
millimeter	mm	copyright	©	correlation coefficient	
		corporate suffixes:		(simple)	r
Weights and measures (English)		Company	Co.	covariance	cov
cubic feet per second	ft ³ /s	Corporation	Corp.	degree (angular)	°
foot	ft	Incorporated	Inc.	degrees of freedom	df
gallon	gal	Limited	Ltd.	expected value	E
inch	in	District of Columbia	D.C.	greater than	>
mile	mi	et alii (and others)	et al.	greater than or equal to	≥
nautical mile	nmi	et cetera (and so forth)	etc.	harvest per unit effort	HPUE
ounce	oz	exempli gratia		less than	<
pound	lb	(for example)	e.g.	less than or equal to	≤
quart	qt	Federal Information Code	FIC	logarithm (natural)	ln
yard	yd	id est (that is)	i.e.	logarithm (base 10)	log
		latitude or longitude	lat or long	logarithm (specify base)	log ₂ , etc.
Time and temperature		monetary symbols		minute (angular)	'
day	d	(U.S.)	\$, ¢	not significant	NS
degrees Celsius	°C	months (tables and figures): first three letters	Jan, ..., Dec	null hypothesis	H_0
degrees Fahrenheit	°F	registered trademark	®	percent	%
degrees kelvin	K	trademark	™	probability	P
hour	h	United States (adjective)	U.S.	probability of a type I error	
minute	min	United States of America (noun)	USA	(rejection of the null hypothesis when true)	α
second	s	U.S.C.	United States Code	probability of a type II error	
		U.S. state	use two-letter abbreviations (e.g., AK, WA)	(acceptance of the null hypothesis when false)	β
Physics and chemistry				second (angular)	"
all atomic symbols				standard deviation	SD
alternating current	AC			standard error	SE
ampere	A			variance	
calorie	cal			population	Var
direct current	DC			sample	var
hertz	Hz				
horsepower	hp				
hydrogen ion activity	pH				
(negative log of)					
parts per million	ppm				
parts per thousand	ppt, ‰				
volts	V				
watts	W				

REGIONAL INFORMATION REPORT NO. 4K26-08

NORTH ALASKA PENINSULA SALMON MANAGEMENT PLAN, 2026

by
Charles W. Russell
Alaska Department of Fish and Game, Division of Commercial Fisheries, Kodiak

Alaska Department of Fish and Game
Division of Commercial Fisheries
351 Research Court, Kodiak, AK 99615

June 2026

The Regional Information Report Series was established in 1987 and was redefined in 2007 to meet the Division of Commercial Fisheries regional need for publishing and archiving information such as area management plans, budgetary information, staff comments and opinions to Alaska Board of Fisheries proposals, interim or preliminary data and grant agency reports, special meeting or minor workshop results and other regional information not generally reported elsewhere. Reports in this series may contain raw data and preliminary results. Reports in this series receive varying degrees of regional, biometric, and editorial review; information in this series may be subsequently finalized and published in a different department reporting series or in the formal literature. Please contact the author or the Division of Commercial Fisheries if in doubt of the level of review or preliminary nature of the data reported. Regional Information Reports are available through the Alaska State Library and on the Internet at: <http://www.adfg.alaska.gov/sf/publications/>.

Product names used in this publication are included for completeness and do not constitute product endorsement. The Alaska Department of Fish and Game does not endorse or recommend any specific company or their products.

Charles W. Russell
Alaska Department of Fish and Game, Division of Commercial Fisheries
351 Research Court, Kodiak, AK 99615, USA

This document should be cited as follows:

Russell, C. W. 2026. North Alaska Peninsula salmon management plan, 2026. Alaska Department of Fish and Game, Division of Commercial Fisheries, Regional Information Report No. 4K26-08, Kodiak.

The Alaska Department of Fish and Game (ADF&G) administers all programs and activities free from discrimination based on race, color, national origin, age, sex, religion, marital status, pregnancy, parenthood, or disability. The department administers all programs and activities in compliance with Title VI of the Civil Rights Act of 1964, Section 504 of the Rehabilitation Act of 1973, Title II of the Americans with Disabilities Act (ADA) of 1990, the Age Discrimination Act of 1975, and Title IX of the Education Amendments of 1972.

If you believe you have been discriminated against in any program, activity, or facility please write:

ADF&G ADA Coordinator, P.O. Box 115526, Juneau, AK 99811-5526

U.S. Fish and Wildlife Service, 4401 N. Fairfax Drive, MS 2042, Arlington, VA 22203

Office of Equal Opportunity, U.S. Department of the Interior, 1849 C Street NW MS 5230, Washington DC 20240

The department's ADA Coordinator can be reached via phone at the following numbers:

(VOICE) 907-465-6077, (Statewide Telecommunication Device for the Deaf) 1-800-478-3648,

(Juneau TDD) 907-465-3646, or (FAX) 907-465-6078

For information on alternative formats and questions on this publication, please contact:

ADF&G, Division of Sport Fish, Research and Technical Services, 333 Raspberry Rd, Anchorage AK 99518 (907) 267-2517

TABLE OF CONTENTS

	Page
LIST OF TABLES.....	ii
LIST OF FIGURES.....	ii
LIST OF APPENDICES	ii
ABSTRACT	1
INTRODUCTION.....	1
GPS COORDINATES AND ENFORCEMENT.....	2
FISHERY ANNOUNCEMENTS.....	2
CATCH REPORTING	2
REGULATION CHANGES.....	3
NORTH ALASKA PENINSULA MANAGEMENT STRATEGY.....	3
Northwestern District	3
Dublin Bay Section.....	3
Urilia Bay Section.....	4
Swanson Lagoon Section.....	4
Bechevin Bay Section.....	4
Izembek–Moffet Bay Section	4
Northern District.....	4
Black Hills Section	4
Caribou Flats Section.....	5
Nelson Lagoon Section.....	5
Herendeen-Moller Bay Section.....	5
Port Moller Bight Section.....	6
Bear River and Three Hills Sections.....	6
Ilnik Section.....	7
Inner Port Heiden and Cinder River Sections.....	8
Outer Port Heiden Section	8
BEAR RIVER TEST FISHERY	9
REFERENCES CITED	10
FIGURES	11
APPENDIX A. SCHEDULED NORTH ALASKA PENINSULA FISHING PERIODS.....	17
APPENDIX B: CHARTS OF AVERAGE RUN TIMING RELATIVE TO CURRENT ESCAPEMENT GOALS FOR SELECT STREAMS AND SPECIES	21

LIST OF TABLES

Table	Page
1. Sockeye salmon stocks used to manage five sections in the Northern District.	7

LIST OF FIGURES

Figure	Page
1. Map of the Alaska Peninsula with North Alaska Peninsula commercial salmon fishing districts.	12
2. Map of the Area M and Area T overlap area with the portion of the Outer Port Heiden Section opened to commercial salmon fishing.	13
3. Map of the Outer Port Heiden Section.	14
4. Map of the Alaska Peninsula with North Alaska Peninsula commercial salmon fishing sections.	15
5. Map of the Alaska Peninsula seasonal offices and North Alaska Peninsula weir locations.	16

LIST OF APPENDICES

Appendix	Page
A1. Scheduled North Alaska Peninsula fishing periods as described in regulations.	18
B1. Average run timing relative to lower and upper escapement goal values for sockeye salmon into the Nelson River system.	22
B2. Average run timing relative to lower and upper escapement goal values for Chinook salmon into the Nelson River system.	23
B3. Average run timing relative to lower and upper escapement goal values for early-run sockeye salmon into the Bear River system.	24
B4. Average run timing relative to lower and upper escapement goal values for late-run sockeye salmon into the Bear River system.	25
B5. Average run timing relative to lower and upper escapement goal values for sockeye salmon into the Ilnik River system.	26

ABSTRACT

The Alaska Department of Fish and Game (ADF&G) will manage the commercial salmon fisheries in the North Alaska Peninsula to promote maximum sustainable yield for future North Alaska Peninsula salmon returns by achieving salmon escapement goals and providing opportunity to harvest salmon in excess of those goals. This document aims to provide commercial salmon fishermen and buyers with information and guidelines used by ADF&G to manage the commercial salmon fisheries of the North Alaska Peninsula during 2026.

The 2026 projected North Alaska Peninsula salmon harvest is 2,144,000 fish, composed of 1,000 Chinook salmon *Oncorhynchus tshawytscha*, 1,998,000 sockeye salmon *O. nerka*, 19,000 coho salmon *O. kisutch*, 62,000 pink salmon *O. gorbuscha*, and 44,000 chum salmon *O. keta*. The bulk of the salmon harvest is projected to occur in the Northern District between the Nelson Lagoon and Outer Port Heiden Sections. The predominant gear types used in the North Alaska Peninsula are drift and set gillnets, though purse seine is a legal gear type in some areas. In 2026, salmon enumeration weirs on the Nelson, Bear, and Ilnik Rivers will be used to facilitate inseason escapement assessment and management.

Keywords: Area M, North Alaska Peninsula, Nelson Lagoon, Bear River, Three Hills, Ilnik, Port Heiden, salmon, commercial fisheries, management plan, Chinook salmon, *Oncorhynchus tshawytscha*, sockeye salmon, *O. nerka*, coho salmon, *O. kisutch*, pink salmon, *O. gorbuscha*, chum salmon, *O. keta*, drift gillnet, set gillnet, purse seine.

INTRODUCTION

The North Alaska Peninsula, a portion of the Alaska Peninsula Management Area (Area M), consists of the Northern and Northwestern Districts and encompasses Bering Sea coastal waters from Cape Menshikof to Cape Sarichef (Figure 1). The Northern District includes all state waters between Cape Menshikof and Moffet Point. The Northwestern District consists of all state waters between Moffet Point and Cape Sarichef on Unimak Island. Five species of salmon are commercially harvested in North Alaska Peninsula waters: Chinook *Oncorhynchus tshawytscha*, sockeye *O. nerka*, coho *O. kisutch*, pink *O. gorbuscha*, and chum *O. keta* salmon.

The Cinder River, Inner Port Heiden, and Ilnik Lagoon Sections comprise an overlap area described under 5 AAC 39.120(d)¹ where both Area M and Area T (Bristol Bay) permit holders may fish under certain conditions (Figure 2). In 2013, the Alaska Board of Fisheries (BOF) allowed Area T permit holders to fish in the inner portion of the Cinder River and Inner Port Heiden Sections during all months when open fishing periods occur. Area M permit holders may fish during open fishing periods in all the above locations. Area T permit holders may also fish in Ilnik Lagoon Section beginning August 1 during open fishing periods. The Outer Port Heiden Section is not part of the overlap area (Figure 3).

The combined 2026 North Alaska Peninsula projected commercial salmon harvest is not a formal forecast and is based on the recent 5-year average harvest, general abundance, and harvest trends. The 2026 North Alaska Peninsula commercial salmon harvest is projected to be 2,144,000 fish, of which 1,000 are expected to be Chinook salmon, 1,998,000 sockeye salmon, 19,000 coho salmon, and 62,000 pink, and 64,000 chum salmon. The 2026 projected sockeye salmon harvest is above the 2025 actual harvest of 1,184,834 fish. The actual harvest of other species is directly related to market conditions and tends to vary annually. For example, there is often a harvestable surplus of coho salmon available in the fall; however, in some years in the recent past, the lack of processor interest or other viable marketing avenues at specific locations preclude a directed harvest.

¹ ADF&G. 2023. 2023–2026 Alaska Peninsula, Atka–Amlia Islands, Aleutian Islands, and Chignik Areas Commercial Salmon Fishing Regulations. Alaska Department of Fish and Game, Juneau.

Formal forecasts are prepared only for the Nelson Lagoon and late Bear River sockeye salmon runs. The 2026 Nelson River total sockeye salmon run is forecasted to be 375,000 fish (range 190,000–623,000 fish) with a harvest of 217,000 sockeye salmon (Gleason et al. 2026). The late Bear River (post-July 31) total sockeye salmon run is forecasted to be 216,000 fish (range 81,000–512,000 fish) with a forecasted harvest of 60,000 fish (Gleason et al. 2026).

GPS COORDINATES AND ENFORCEMENT

ADF&G and the Alaska Department of Public Safety use global positioning system (GPS) technology to identify districts, sections, closed waters, and regulatory fishing coordinates published in regulations or emergency orders. GPS is based on the North American 1983 datum.

FISHERY ANNOUNCEMENTS

The Northern District will be managed from the Port Moller ADF&G office, while the Northwestern District will be managed from the Cold Bay ADF&G office. Management staff can be reached over VHF channel 65A in Port Moller or through the following contacts:

Port Moller:

Alaska Dept. of Fish & Game
Phone (907) 942-5863
charlie.russell@alaska.gov
chris.dailey@alaska.gov

Cold Bay:

Alaska Dept. of Fish & Game
Phone (907) 532-2419
matthew.keyse@alaska.gov
annie.brewster@alaska.gov

Inseason Advisory Announcements will be made available to the industry and the public by one or more of the following methods:

- Communicated directly to the local buyers/processors and fishermen via email or verbally.
- Transmitted over radio (VHF 65A) in Port Moller.
- Advisory Announcements will be displayed at several places in Port Moller and at ADF&G offices in Port Moller, Cold Bay, and Sand Point.
- In Port Moller, after business hours at the phone number listed above using recorded messages.

Advisory Announcements and catch reports will also be updated on the Westward Region web site located at: <http://www.adfg.alaska.gov/index.cfm?adfg=commercialbyareaakpeninsula.main>

When possible, ADF&G will give a minimum of 6 hours advance notice of commercial fishing openings when established by emergency order. However, there may be times when less than 6 hours' notice is given for a commercial fishery opening/closure/extension.

CATCH REPORTING

Buyers/processors must report their salmon purchases by location, species (in both numbers of fish and pounds; 5 AAC 39.130), and number of deliveries by 8:00 AM the day after delivery. Reports are made to the ADF&G office in Port Moller for harvests in the Northern District (between stat areas 313-10 and 318-20), and to ADF&G in Cold Bay for harvests in the Northwestern District (between stat areas 311-20 and 312-40). According to 5 AAC 39.010, a person engaged in commercial fishing may retain finfish from lawfully taken commercial catch for that person's own use, including for the use as bait in a commercial fishery. Finfish retained under this section may not be sold or bartered and must be reported on a fish ticket.

When purchasing salmon, the buyer must complete fish tickets showing the statistical area where the fish were harvested. The harvest location may be different than the area where the delivery occurred. Fish tickets must be sent to the appropriate ADF&G office in Port Moller or Cold Bay within 7 days of delivery (5 AAC 39.130(c)). The following addresses should be used:

Port Moller:

Alaska Dept. of Fish & Game
P.O. Box 163
Port Moller, AK 99571-8999

Cold Bay:

Alaska Dept. of Fish & Game
P.O. Box 50
Cold Bay, AK 99571

REGULATION CHANGES

At the February 2026 Alaska Peninsula BOF meeting, the board approved one change to the Northern District Salmon Management Plan. The change permits the Caribou Flats Section to open to commercial salmon fishing from June 20 to July 31 if the upper end of the sockeye salmon escapement goal for the Nelson River is expected to be exceeded prior to August 1. The next scheduled regulatory meeting will be in 2029.

NORTH ALASKA PENINSULA MANAGEMENT STRATEGY

The North Alaska Peninsula salmon fisheries are managed based on the abundance of local salmon runs, with our primary management objective on the North Peninsula being to achieve escapement goals and provide escapement throughout the run. The data used for fisheries management include escapement information from weir counts and/or aerial surveys, ADF&G test-fishery data, and total catch and fishery performance trends over time. Management of major sockeye salmon runs is based on escapement and utilizes daily escapement information from salmon counting weirs on the Nelson, Bear, and Ilnik Rivers (Appendices B1–B5). During the open season, scheduled weekly fishing periods are listed in Appendix A1 and the 2023–2026 Commercial Finfish Regulations. Northern District sections such as Herendeen-Moller Bay, Port Moller Bight, Inner Port Heiden, Cinder River, and the Black Hills have historically received little to no effort over the past 25 years (Figure 4). The department will open these areas to encourage participation and offer opportunities for harvest if there is interest. As has happened in previous years, the department will continue working with industry in areas with minimal effort to provide additional harvest opportunities. If effort levels significantly increase, adjustments to fishing periods will be made.

NORTHWESTERN DISTRICT

Northwestern District fishing periods are managed by ADF&G in Cold Bay. Questions about fishing in these sections should be directed to the Cold Bay office.

Dublin Bay Section

Commercial salmon fishing periods in the Dublin Bay Section (Figure 4) will be open to commercial salmon fishing from July 10 until August 31 from 6:00 AM Monday to 6:00 PM Thursday, and from September 1 through September 30 by emergency order only, as summarized in Appendix A1.

Urilia Bay Section

Commercial salmon fishing periods in the Urilia Bay Section (Figure 4) may open by emergency order if the sockeye salmon sustainable escapement goal (SEG) in Christianson Lagoon is likely to be met (23,000–50,000 fish; Finkle et al. 2026). Christianson Lagoon will be managed through July 31 based on sockeye salmon abundance, and Peterson Lagoon will be managed through August 31 based on chum salmon abundance. During August and September, the Urilia Bay Section will be managed based on coho salmon abundance. Inseason abundance will be determined by aerial surveys and daily harvests.

Swanson Lagoon Section

Sockeye and chum salmon stocks in the Swanson Lagoon Section (Figure 4) will be managed through August based on local area abundance estimates, and openings will be determined using emergency orders. Abundance will be determined by aerial surveys and daily harvests. At the February 2019 Board of Fisheries meeting, the SEG and Stock of Concern status for Swanson Lagoon were removed following recommendations outlined in Schaberg et al. 2019. In recent years, a sandbar has intermittently blocked adult salmon from entering the Swanson Lagoon or juvenile salmon from exiting the lagoon, making escapement into the system untenable. In September, the section will be managed by emergency order based on local area coho salmon abundance determined from aerial surveys.

Bechevin Bay Section

In June, the Bechevin Bay Section (Figure 4) will open concurrently with the Ikatan Bay Section (part of the South Peninsula) according to the *South Unimak and Shumagin Islands June Salmon Management Plan* (5 AAC 09.365(b)). Post-June, the Bechevin Bay Section will be managed by emergency order based on the strength of local chum and pink salmon stocks, as determined by aerial surveys. Fishing periods throughout the Bechevin Bay Section will be established by emergency order after June 30.

Izembek–Moffet Bay Section

Through August, chum salmon are the most abundant species found in the Izembek–Moffet Bay Section (Figure 4) and openings will be scheduled from 6:00 AM Monday to 6:00 PM Thursday. From September 1 to September 30, coho salmon become the predominant species, and openings will be based on emergency order. Management decisions will be based on aerial surveys. If there is little or no market for chum salmon, and fishermen target local sockeye salmon producing systems, management decisions will be based on the sockeye salmon run strength to these systems.

NORTHERN DISTRICT

Black Hills Section

During June, the Black Hills Section (Figure 4) will be managed based on the strength of local Chinook and sockeye salmon stocks. Management during July and early August will be based on the abundance of local sockeye and chum salmon runs in the Black Hills Section. Weekly fishing periods in the Black Hills Section before July 1 are scheduled for 2.5 days per week, from 6:00 AM Monday to 6:00 PM Wednesday. Beginning July 1, they will be 3.5 days per week, from 6:00 AM Monday to 6:00 PM Wednesday (Appendix A1). North Creek is the dominant sockeye salmon producing system in the Black Hills Section and has an SEG of 7,500 to 10,000 fish (Finkle et al.

2026). If substantial effort occurs in the Black Hills Section and that effort targets chum salmon bound for Moffet Lagoon, management actions in the Black Hills Section will consider the strength of the chum salmon runs into Moffet Lagoon. During late August and September, the Black Hills Section will be managed based on local coho salmon abundance and harvest effort.

Caribou Flats Section

Commercial salmon fishing periods in the Caribou Flats Section (Figure 4) may open by emergency order from June 20 to July 31, if the upper end of the sockeye salmon escapement goal for the Nelson River is expected to be exceeded prior to August 1 (87,000–219,000 fish; Finkle et al., 2026).

Nelson Lagoon Section

The Nelson River biological escapement goal (BEG) is 97,000 to 219,000 sockeye salmon (Figure 5, Appendix B1; Finkle et al. 2026). The Nelson Lagoon fishery will be managed based on sockeye salmon escapement at the Nelson River weir (Appendix B1; Figure 5). Commercial salmon fishery harvests will also be used to evaluate run strength. The estimated number of female sockeye salmon in the escapement should comprise approximately half the total escapement goal range by July 25 (50,000–110,000 female sockeye salmon).

The BEG range for Chinook salmon in the Nelson River system is 2,400 to 5,000 fish (Appendix B2; Finkle et al. 2026). To provide adequate escapement for Chinook salmon in Nelson Lagoon, weekly fishing periods through June 15 are limited to 3 days per week, 6:00 AM Monday to midnight Wednesday (Appendix A1). From June 16 to August 15, fishing periods are scheduled to be 4 days per week, 6:00 AM Monday to 6:00 PM Thursday (Appendix A1). Additional fishing time may be allowed if daily sockeye salmon catches are large or cumulative weir counts are stronger than expected. However, if it is evident in June that the Chinook or sockeye salmon runs are weak, the number of fishing days can be reduced, but factors such as sockeye salmon run strength and harvest of Chinook salmon will be evaluated. The amount of effort directed at harvesting Chinook salmon in the fishery (e.g., mesh size of fishing gear used) will be considered when evaluating sockeye salmon escapement strategy.

During July, fishing time will be dependent upon sockeye salmon escapements and daily catches. If escapement data from the Nelson River weir cannot be determined due to high water events, then daily catch rates (primarily) and daily catch per boat (secondarily) will be used to evaluate run strength.

Beginning August 16, the Nelson Lagoon fishery is managed on coho salmon run strength. No more than 3 fishing days will be allowed per week unless coho salmon escapement in the Nelson River is expected to exceed the SEG lower bound of 19,000 fish (Finkle et al. 2026), or if the fishing effort has minimal impact on achieving adequate escapement.

Herendeen-Moller Bay Section

Prior to July 20, the Herendeen-Moller Bay Section (Figure 4) will be managed on a fishing schedule based on the abundance of chum and pink salmon stocks. Herendeen Bay chum and pink salmon (especially during even-numbered years for pink salmon) will be managed by emergency order after July 20. Management will be based on inseason abundance determined by aerial surveys and catch information.

Port Moller Bight Section

The Port Moller Bight Section (Figure 4) will be managed by emergency order based on the status of sockeye salmon escapement at the Bear River weir (Appendices B3–B4).

Bear River and Three Hills Sections

The Bear River Section will be managed based on sockeye salmon escapements at the Bear and Sandy Rivers, while the Three Hills Section will be managed based on escapement at Bear, Sandy and Ilnik Rivers (Figures 4–5, Appendices B3–B5). The Bear River sockeye salmon escapement objective is divided into proportions of the early and late runs to account for both components of the Bear River run. The combined early- and late-run Bear River escapement objective, including a post-weir estimate, is an SEG of 293,000 to 488,000 sockeye salmon by September 15 (Finkle et al. 2026). The SEG range for the early run, from June 1 through July 31, is 176,000 to 293,000 sockeye salmon (Appendix B3). The escapement goal range for the late run, from August 1 through August 25, when the weir is removed, is 87,000 to 165,000 sockeye salmon (Appendix B4). The post-weir objective of 30,000 sockeye salmon is included in the Bear River late-run SEG of 117,000 to 195,000 fish (Finkle et al. 2026). If the Bear River sockeye salmon run is weak and falls below the expected levels for the date (Appendices B3 and B4), fishing in all or part of the Bear River and Three Hills Sections will be restricted until the cumulative escapement goals are reached.

If the weir is installed, the Sandy River sockeye salmon SEG range is 37,000–69,000 fish (Table 1; Figure 5; Finkle et al. 2026). However, due to budget constraints, the weir has not been installed since 2024. In the absence of weir counts, aerial surveys will be used to monitor sockeye escapement into the Sandy River. An aerial indexed total escapement goal of 20,000 to 30,000 was developed in the 1970s, based on visual estimates of spawning grounds (Nelson and Lloyd 2001).

Prior to July 21, the Three Hills Section will be managed based on the Bear River, Sandy River, and at times the Ilnik River sockeye salmon escapement, depending on the status of the Ocean River (Table 1; Figures 4–5). If escapement in the Bear or Sandy Rivers are not being met, a portion of the Bear River Section may be closed while the Three Hills Section may remain open. This strategy has been used successfully in the past to achieve escapement objectives while providing fishing opportunities and avoiding surplus escapement into Bear River. If escapement into Ilnik and/or Ocean River (Ocean River is part of the Ilnik River system and occasionally Ocean River flows directly into the Bering Sea) is inadequate, and area closures in the Ilnik Section are not an effective conservation action, the fishery in the eastern portion of the Three Hills Section may be closed to provide additional protection for fish needed for escapement.

Table 1.–Sockeye salmon stocks used to manage five sections in the Northern District.

Section	Sockeye salmon stocks	
	Through July 20	After July 20
Nelson Lagoon	Nelson R.	Nelson R.
Bear River	Bear R., Sandy R.	Bear R., Sandy R.
Three Hills	Bear R., Sandy R., Ilnik R.	Bear R., Sandy R.
Ilnik		
SW of Unangashak Bluffs	Ilnik R., Ugashik R.	Bear R.
NE of Unangashak Bluffs	Ilnik R., Meshik R., Ugashik R.	Bear R.
Outer Port Heiden	Meshik R., Ugashik R.	Meshik R. (through July 31)

During June, management decisions regarding sockeye salmon may be conservative in the Bear River Section to protect Chinook salmon stocks in the King Salmon, Bear, and Sandy Rivers. In August and September, management decisions in the Three Hills Section will consider the strength of Ilnik Lagoon coho salmon runs. Inseason abundance of coho salmon will be determined by aerial surveys.

Ilnik Section

The portion of the Ilnik Section outside of the Ilnik Lagoon and southwest of Unangashak Bluffs will be managed based on Ilnik River sockeye salmon run strength through July 20 (Appendix A1). The portion of the Ilnik Section northeast of Unangashak Bluffs to Strogonof Point (Figure 2) will be managed based on Ilnik and Meshik Rivers sockeye salmon run strength unless a management concern exists for Ilnik. Aerial surveys will be used to determine escapement into the Meshik River. Between July 20 and August 15, fishing time in the entire Ilnik Section will be based on Bear River sockeye salmon run strength. After August 15, the strength of the local coho salmon run, as determined by CPUE, will dictate fishing time in the Ilnik Section, unless a concern exists regarding the late-run sockeye salmon in the Bear River.

The sockeye salmon escapement objective for the Ocean River is based on aerial surveys when the river flows directly into the Bering Sea (not into the Ilnik River), as in 1972–1975, 1986–1987, 2005–2013, 2016, and 2022–2023. When this occurs, many of the fish bound for Ocean River do not pass through the Ilnik River weir (Figure 5). For the years noted above, an average of about 30% of the total Ilnik River watershed escapement spawned in Ocean River. If the Ocean River were to flow directly into the Bering Sea during 2026, the proportion of the Ocean River escapement would be subtracted from the Ilnik River escapement goal (Appendix B5). Due to the proximity of the Ocean River terminus to the Three Hills Section, management actions can be taken in the Three Hills Section to meet escapement objectives in Ocean River. If escapements are behind the escapement objectives at the Ilnik River weir, and the Ocean River flows through Ilnik Lagoon, the department might implement closures near the Ocean River to prevent harvesting of milling sockeye salmon, as happened in 2023 and 2024.

After August 15, the Ilnik Section will be managed based on coho salmon. The Ilnik River coho salmon escapement goal is 9,000 to 24,000 fish (Finkle et al. 2026).

Inner Port Heiden and Cinder River Sections

The Inner Port Heiden and Cinder River Sections (Figure 2) will be managed based on Chinook salmon abundance during May through mid-June. Weekly fishing periods in the Inner Port Heiden Section are scheduled to be 2.5 days per week, 6:00 AM Monday to 6:00 PM Wednesday (Appendix A1). The weekly fishing periods established in regulation may be adjusted in the Inner Port Heiden and Cinder River Sections to accommodate effort (Appendix A1). Liberal fishing time will be given for low effort levels if escapement warrants. Sockeye salmon escapement from mid-June through July and coho salmon escapement after July will dictate fishing time in these sections. The Meshik River sockeye salmon escapement objective is 48,000 to 86,000 fish. The Cinder River sockeye salmon escapement objective is 36,000 to 94,000 fish. Area M and T permit holders may fish in the open waters of the Cinder River and Inner Port Heiden Sections. Area T permit holders are also allowed, along with Area M permit holders, to fish after July 31 in that portion of the Ilnik Section within Ilnik Lagoon (5 AAC 39.120(d); Figure 2). The fishing season in that portion of the Cinder River Section outside of Shagong Lagoon (Cinder River Lagoon) cannot open earlier than August 1 (5 AAC 09.310(a)(1)(B); Figure 2). Fishermen in the Cinder River Section are reminded that the following waters are closed to commercial salmon fishing under 5 AAC 09.350 (1) and (2):

Cape Meshikof: all waters of the Cinder River Section located north and east of a line extending 304° from a point on the shore at 57°23.59' N lat and 158°01.68' W long. to a point offshore at the 3.0 nautical mile line at 57°26.33' N lat and 158°06.21' W long.

Cinder River Lagoon: all waters enclosed by a line from 57°21.14' N lat, 158°06.82' W long, to 57°21.46' N lat, 158°04.68' W long.

The weekly fishing period in the Cinder River Section are scheduled to be 2.5 days per week, 6:00 AM Thursday to 6:00 PM Saturday. Also, in the Cinder River Section set gillnet gear may not be placed further than one-half mile from the mean high tide mark. Beginning June 20, fishing time permitted in the portion of the Ilnik Section located northeast of Unangashak Bluffs (Figure 2) will be concurrent with fishing time in the Inner Port Heiden Section (if effort occurs), unless management concern exists for Ilnik or Ugashik Rivers sockeye salmon and either interim or season total escapement goals appear likely not to be met. Depending on effort levels in the Inner Port Heiden Section, fishing time may be concurrent with openings in the Outer Port Heiden Section since both areas will be managed based on Meshik River salmon runs.

Outer Port Heiden Section

In the Outer Port Heiden Section, fishing is permitted west of a line from 57°05.52' N lat, 158°34.45' W long to 57°08.85' N lat, 158°37.50' W long between June 20 and July 31 (5 AAC 09.310(a)(2)(B) and 5 AAC 09.350(3)) and out to 3 nmi from land (Figure 3). Weekly fishing periods in the Outer Port Heiden Section are scheduled to be 2.5 days per week, 6:00 AM Monday to 6:00 PM Wednesday (Appendix A1). Fishing time in the Outer Port Heiden Section will be based on Meshik River sockeye salmon escapement unless management actions are taken for the conservation of Ugashik River sockeye salmon in the Egegik District of Area T. The sockeye salmon escapement goal in the Meshik River system will be estimated by aerial surveys beginning in June and finalized in early to mid-August. The closed waters at Reindeer Creek are 1,000 yards from the stream terminus.

BEAR RIVER TEST FISHERY

During the 2026 season, ADF&G may conduct a test fishery near the mouth of Bear River (Figures 4–5) to gauge the marine abundance of local sockeye salmon. The main objective of the test fishery is to decrease the likelihood of exceeding the Bear River escapement goal and to maximize the harvest opportunity on the Bear River sockeye salmon stock. The test fishery will occur during commercial fishing closures after build-ups of fish are expected (usually 3–5 days after a closure). ADF&G management staff in Port Moller will assess the sockeye salmon abundance after each test fishery. Management decisions will incorporate all information available, including daily catch rates prior to the fishery closure, aerial survey estimates, daily escapement counts, and test fishery results. If salmon build-ups occur in the test fishery area, management actions may include opening the commercial fishery to provide additional harvest opportunities while providing a closed water area to protect milling Bear River bound sockeye salmon. As in the past, ADF&G may close areas around Bear River to ensure escapement requirements are achieved while providing a harvest opportunity outside the closed area.

The ADF&G office in Port Moller will establish and maintain a list of permit holders willing to participate in the test fishery program. Enrollment will begin on May 15 and will continue until the day prior to the first test fishing date. Enrollment may be completed in person, by phone, or over the VHF radio. The participating vessels must be able to chill the catch using refrigerated sea water. Each vessel must meet requirements specified by ADF&G as stated in the North Alaska Peninsula Sockeye Salmon Test Fishery Operational Plan 2025–2026 (Middleton and Russell 2025).

All eligible names will be randomly chosen, and a sequential list of charter vessels will be announced over the VHF radio and kept available at the ADF&G office in Port Moller. The sequential list will be maintained throughout the season. If the permit holder is unavailable to participate in the test fishery (permit holder cannot be contacted prior to 8:00 PM the day before the test fishery), the vessel will be moved to the bottom of the list and the next vessel on the list will be announced. Additional permit holders may enroll once the list is established, however, these vessels will be placed at the end of the established list in the order in which their enrollments are received.

Two chartered vessels will depart Port Moller on the morning of each test fishing day, and the vessel skippers will supply all necessary gear to make 4 sets at designated locations in the vicinity of Bear River. One vessel will fish north of the river mouth, and the other south of the river mouth. One ADF&G observer will be on board each vessel. Test fisheries on the North Peninsula may also occur in other locations if staff decides to generate revenue for the management of North Alaska Peninsula fisheries management.

In 2026, it is unknown whether a cost-recovery fishery will occur, given market conditions and industry interest. However, if a cost-recovery fishery does occur, the goal of the cost-recovery fishery is to use drift gillnet vessels to harvest a certain number (or value) of salmon that will help support the North Alaska Peninsula weir operations and Port Moller office operations (Middleton and Russell 2025). The same selection process outlined above for the test fishery will occur for the cost recovery fishery. There may be times when the cost recovery also provides valuable abundance information and will be used for in-season management. The location where the cost recovery occurs will be determined by the proximity of the fishing fleet and industry, as well as where the fish can be harvested most efficiently.

REFERENCES CITED

- Finkle, H., M. J. Witteveen, M. L. Wattum, M. B. Foster, and T. Polum. 2026. Review of salmon escapement goals in the Alaska Peninsula and Aleutian Islands Management Areas, 2025. Alaska Department of Fish and Game, Fishery Manuscript No. 26-02, Anchorage. <http://www.adfg.alaska.gov/FedAidPDFs/FMS26-02.pdf>
- Gleason, C. M., and A. R. Munro, editors. 2026. Run forecasts and harvest projections for 2026 Alaska salmon fisheries and review of the 2025 season. Alaska Department of Fish and Game, Special Publication No. 26-08, Anchorage. <http://www.adfg.alaska.gov/FedAidPDFs/SP26-08.pdf>
- Middleton, W. S., and C. W. Russell. 2025. North Alaska Peninsula sockeye salmon test and cost recovery fishery operational plan, 2025–2026. Alaska Department of Fish and Game, Division of Commercial Fisheries, Regional Operational Plan No. ROP.CF.4K.2025.01, Kodiak. <http://www.adfg.alaska.gov/FedAidPDFs/ROP.CF.4K.2025.01.pdf>
- Nelson, P. A., and D. S. Lloyd. 2001. Escapement Goals for Pacific Salmon in the Kodiak, Chignik, and Alaska Peninsula-Aleutian Islands Areas of Alaska. Alaska Department of Fish and Game, Division of Commercial Fisheries, Regional Information Report No. 4K01-66, Kodiak. <http://www.adfg.alaska.gov/FedAidPDFs/RIR.4K.2001.66.pdf>
- Schaberg, K. L., H. Finkle, M. B. Foster, A. St. Saviour, and M. L. Wattum. 2019. Review of salmon escapement goals in the Alaska Peninsula and Aleutian Islands Management Areas, 2018. Alaska Department of Fish and Game, Fishery Manuscript No. 19-01, Anchorage. <http://www.adfg.alaska.gov/FedAidPDFs/FMS19-01.pdf>

FIGURES

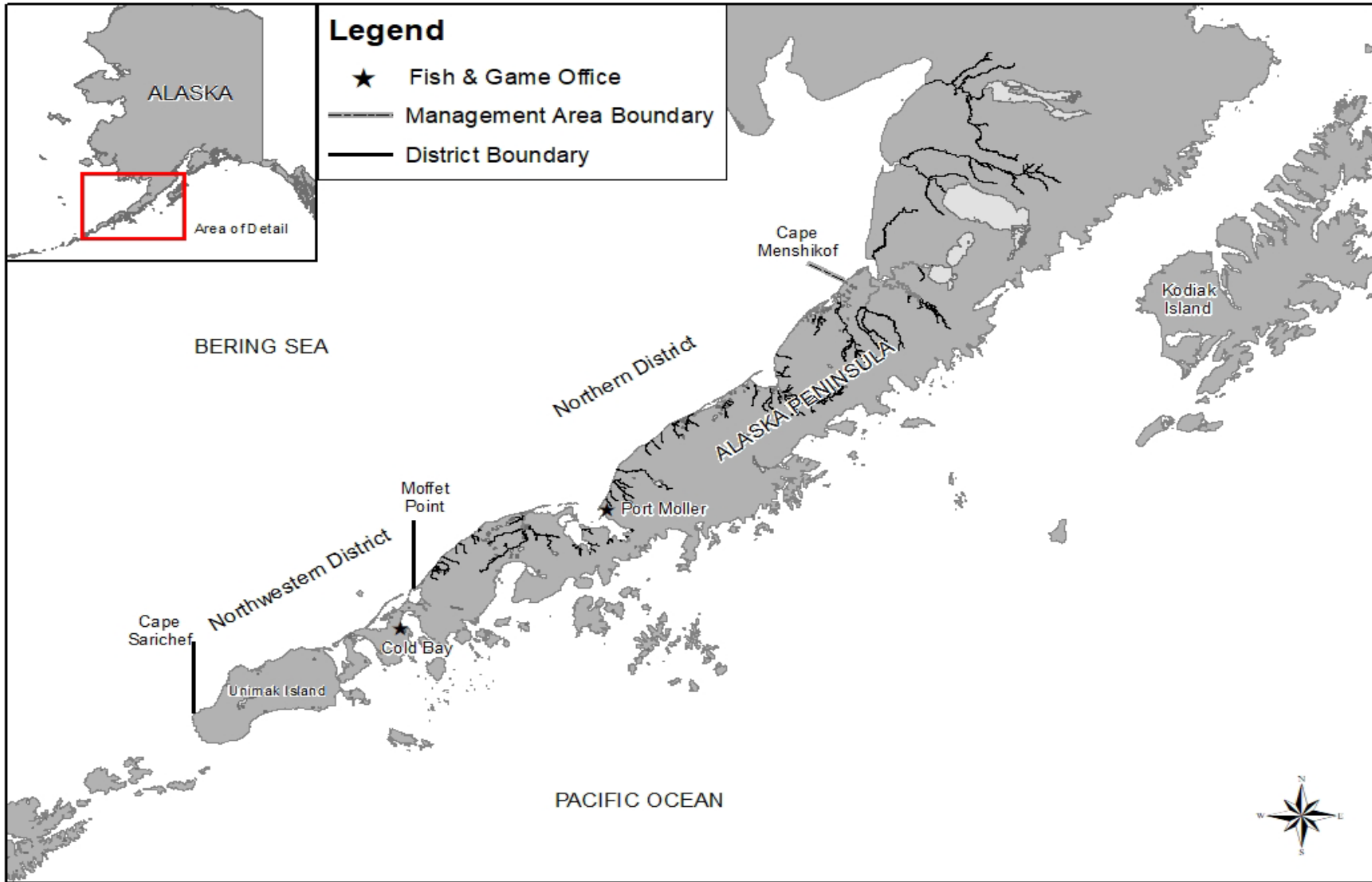


Figure 1.—Map of the Alaska Peninsula with North Alaska Peninsula commercial salmon fishing districts.

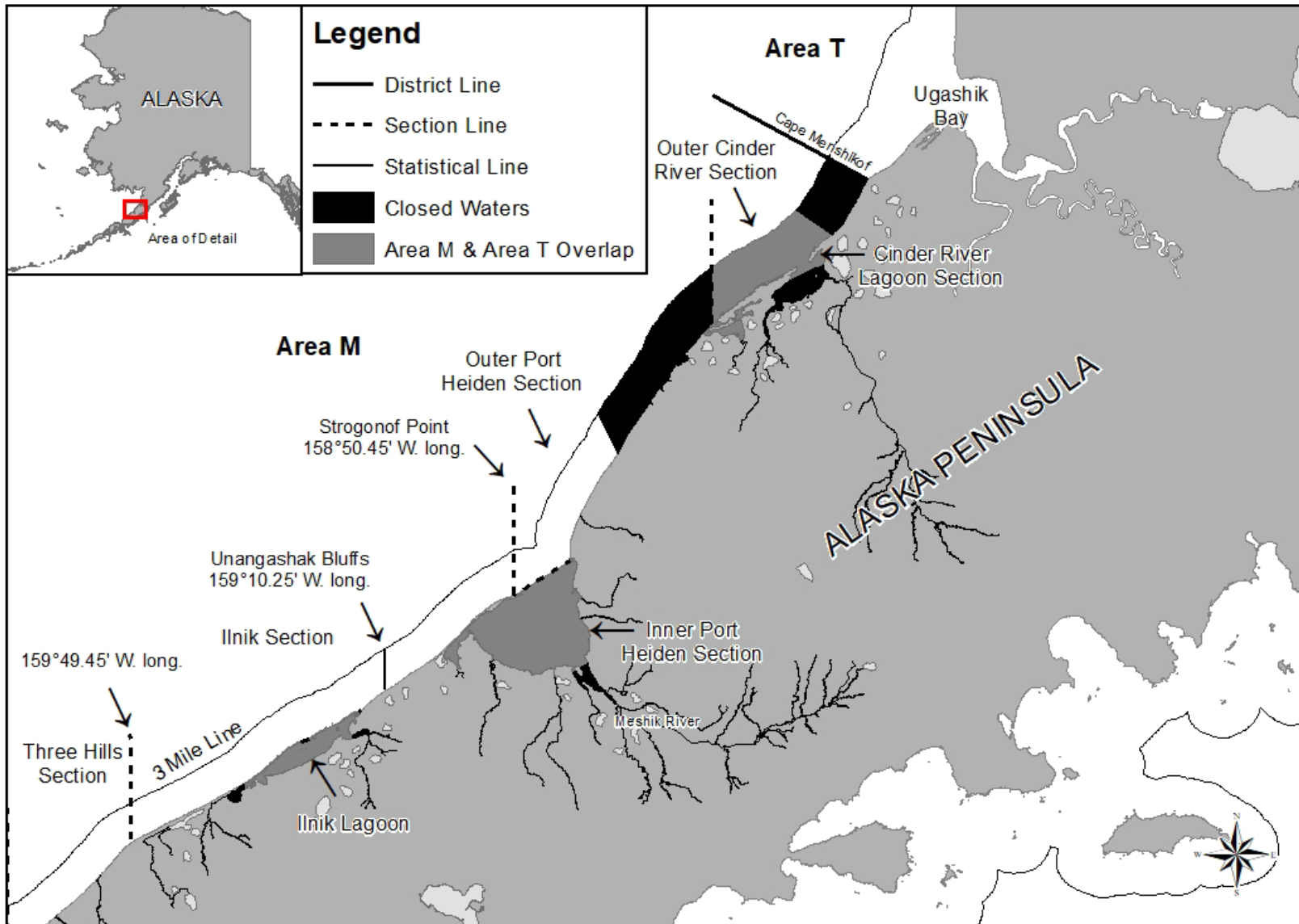


Figure 2.—Map of the Area M and Area T overlap area (Ilnik Lagoon, Inner Port Heiden, and Cinder River Section) with the portion of the Outer Port Heiden Section opened to commercial salmon fishing.

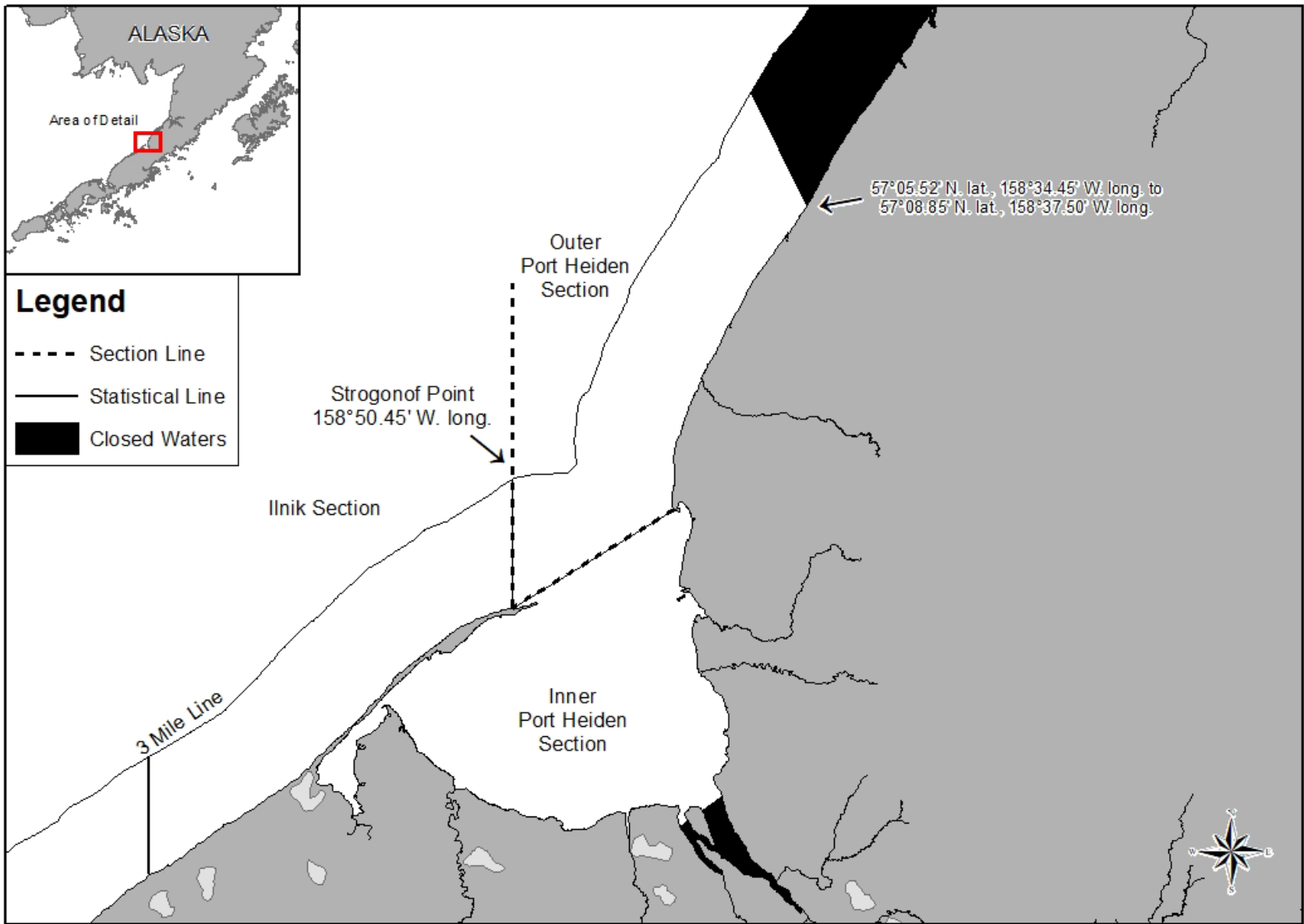


Figure 3.—Map of the Outer Port Heiden Section.

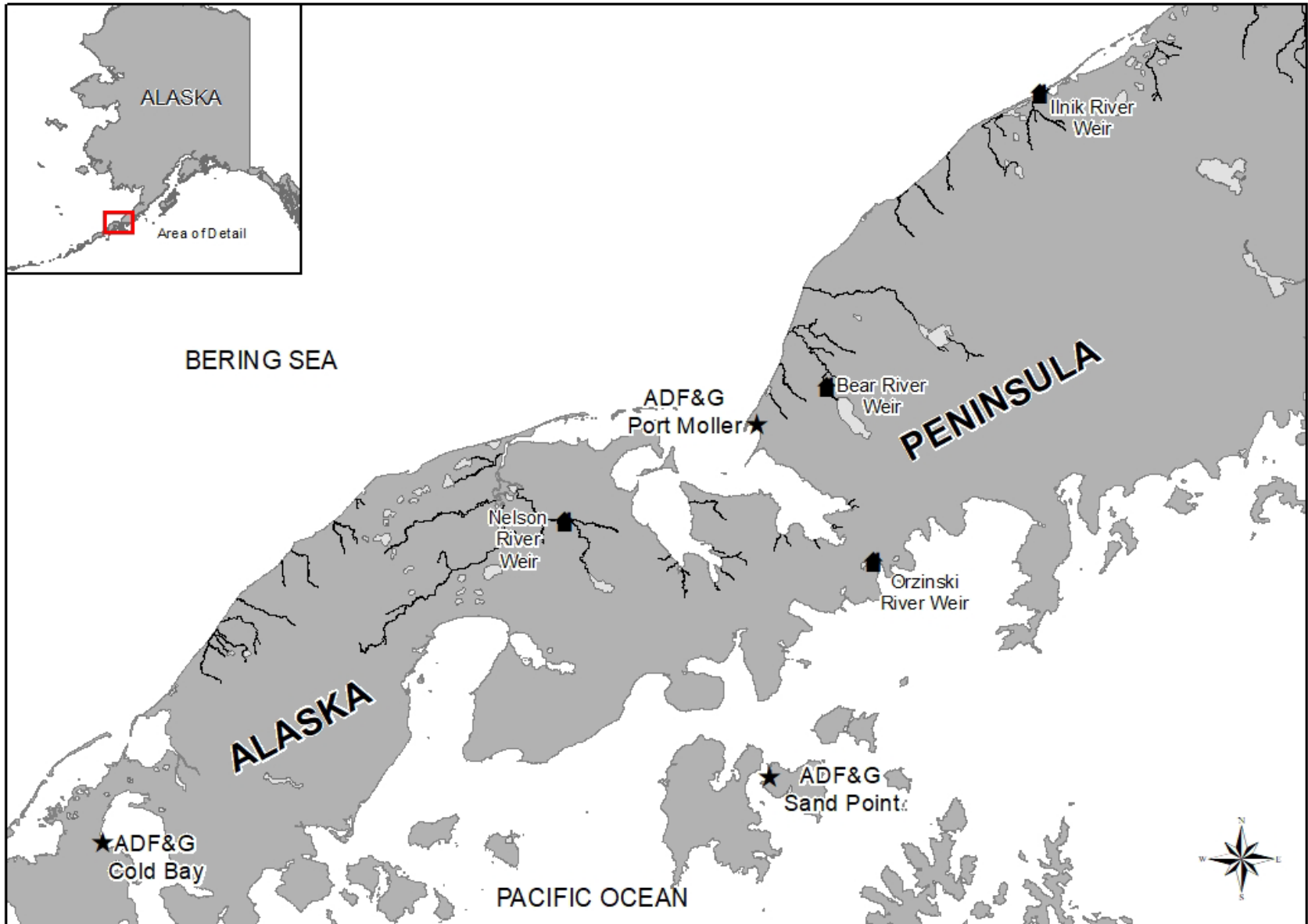


Figure 5.—Map of the Alaska Peninsula seasonal offices and North Alaska Peninsula weir locations.

**APPENDIX A. SCHEDULED NORTH ALASKA PENINSULA
FISHING PERIODS**

Appendix A1.—Scheduled North Alaska Peninsula fishing periods as described in regulations.

Section	Open season	Scheduled fishing period
Cinder River		
Outside Shagong Lagoon	August 1 – September 30	6:00 AM Thursday to 6:00 PM Saturday
Inside Shagong Lagoon	May 1 – September 30	6:00 AM Thursday to 6:00 PM Saturday
Outer Port Heiden		
(W of 57° 05.52' N. lat., 158° 34.45' W. long. to 57° 08.85' N. lat., 158°37.50' W. long.)	June 20 – July 31	6:00 AM Monday to 6:00 PM Wednesday
(E of 57° 05.52' N. lat., 158° 34.45' W. long. to 57° 08.85' N. lat., 158°37.50' W. long.)	No open season	
Inner Port Heiden	May 1 – September 30	6:00 AM Monday to 6:00 PM Wednesday
Ilnik Section		
Southwest of Unangashak Bluffs (159° 10.25' W. long.) excluding Ilnik Lagoon and within the Seal Islands	June 20 – September 30	6:00 AM Monday to 6:00 PM Wednesday
Between Unangashak Bluffs (159°10.25' W. long.) to Strogonof Point (158° 50.45' W. long.).	June 20 – September 30	6:00 AM Monday to 6:00 PM Wednesday
Inside Ilnik Lagoon and within the Seal Islands	May 1 – June 19	noon Monday to 11:59 PM Wednesday
Inside Ilnik Lagoon and within the Seal Islands	June 20 – September 30	6:00 AM Monday to 6:00 PM Wednesday
Three Hills	June 25 – June 30	6:00 AM Monday to 6:00 PM Wednesday
Three Hills	July 1 – September 30	6:00 AM Monday to 6:00 PM Thursday
Bear River	May 1 – June 30	6:00 AM Monday to 6:00 PM Wednesday
Bear River	July 1 – September 30	6:00 AM Monday to 6:00 PM Thursday

-continued-

Appendix A1.–Page 2 of 2.

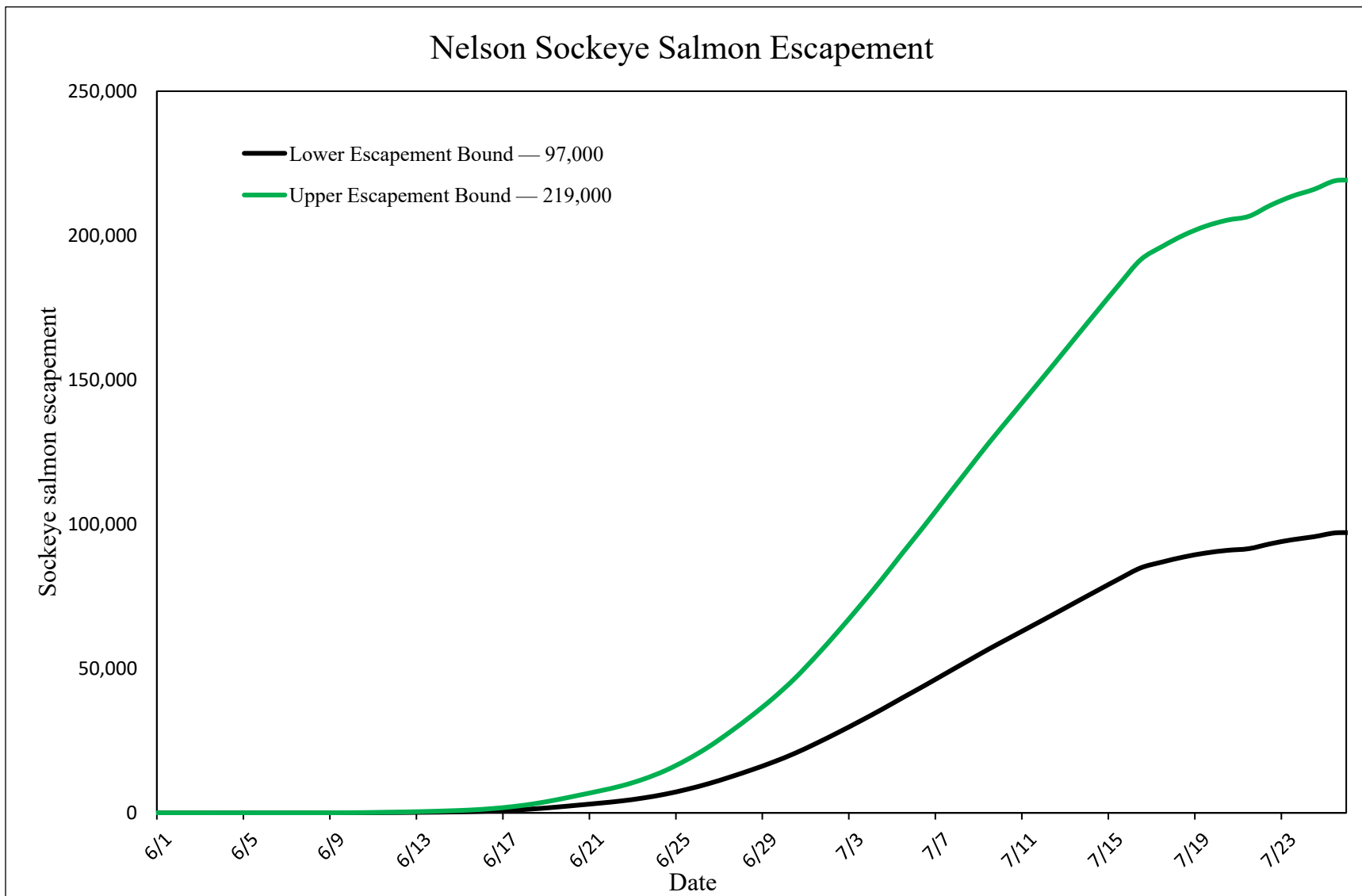
Section	Open season	Scheduled fishing period
Port Moller Bight	May 1 – September 30	6:00 AM Monday to 6:00 PM Thursday
Herendeen-Moller Bay	May 1 – July 20	6:00 AM Monday to 6:00 PM Thursday
Nelson Lagoon	May 1 – June 15	6:00 AM Monday to midnight Wednesday
	June 16 – August 15	6:00 AM Monday to midnight Thursday
	August 16 – September 30	6:00 AM Monday to midnight Wednesday
Caribou Flats	June 20 – July 31	By emergency order only
Black Hills	May 1 – June 30	6:00 AM Monday to 6:00 PM Wednesday
	July 1 – September 30	6:00 AM Monday to 6:00 PM Thursday
Izembek-Moffet Bay	June 1 – August 31	6:00 AM Monday to 6:00 PM Thursday
	September 1 – September 30	by emergency order only
Swanson Lagoon	June 1 – August 31	by emergency order only
	September 1 – September 30	by emergency order only
Bechevin Bay ^a	June 1 – September 30	by emergency order only
Urilia Bay ^b	June 1 – September 30	by emergency order only
Dublin Bay	July 10 – August 31	6:00 AM Monday to 6:00 PM Thursday
	September 1 – September 30	by emergency order only

^a Bechevin Bay is included in the South Unimak and Shumagin Islands June Salmon Management Plan and opens by executive order as listed in 5 AAC 09.365 (d)

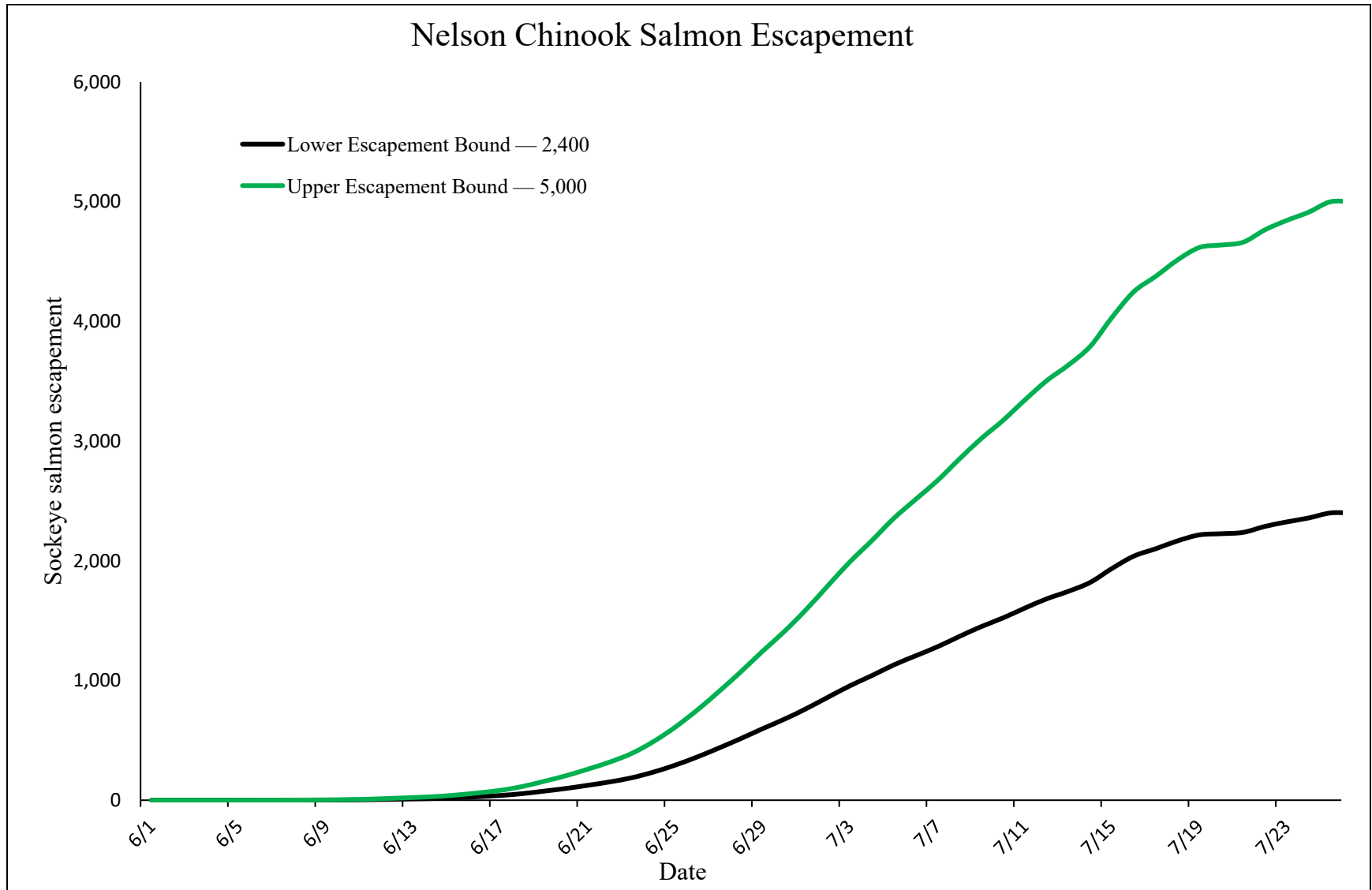
^b In recent years, the fishing season in the Urilia Bay Section has been delayed until late June to obtain a substantial amount of sockeye salmon escapement before fishing begins.

**APPENDIX B: CHARTS OF AVERAGE RUN TIMING
RELATIVE TO CURRENT ESCAPEMENT GOALS FOR
SELECT STREAMS AND SPECIES**

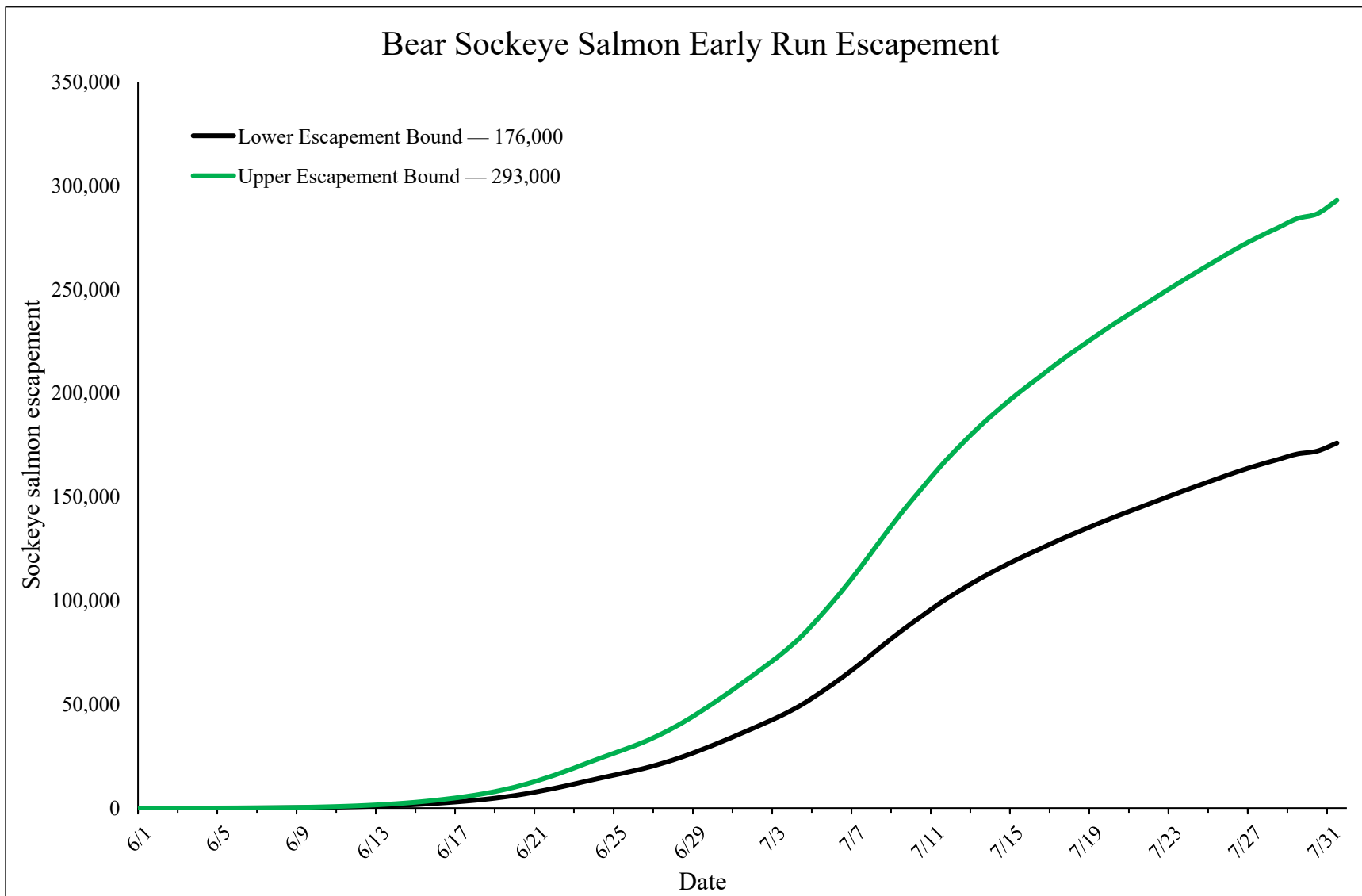
Appendix B1.—Average run timing relative to lower and upper escapement goal values for sockeye salmon into the Nelson River system.



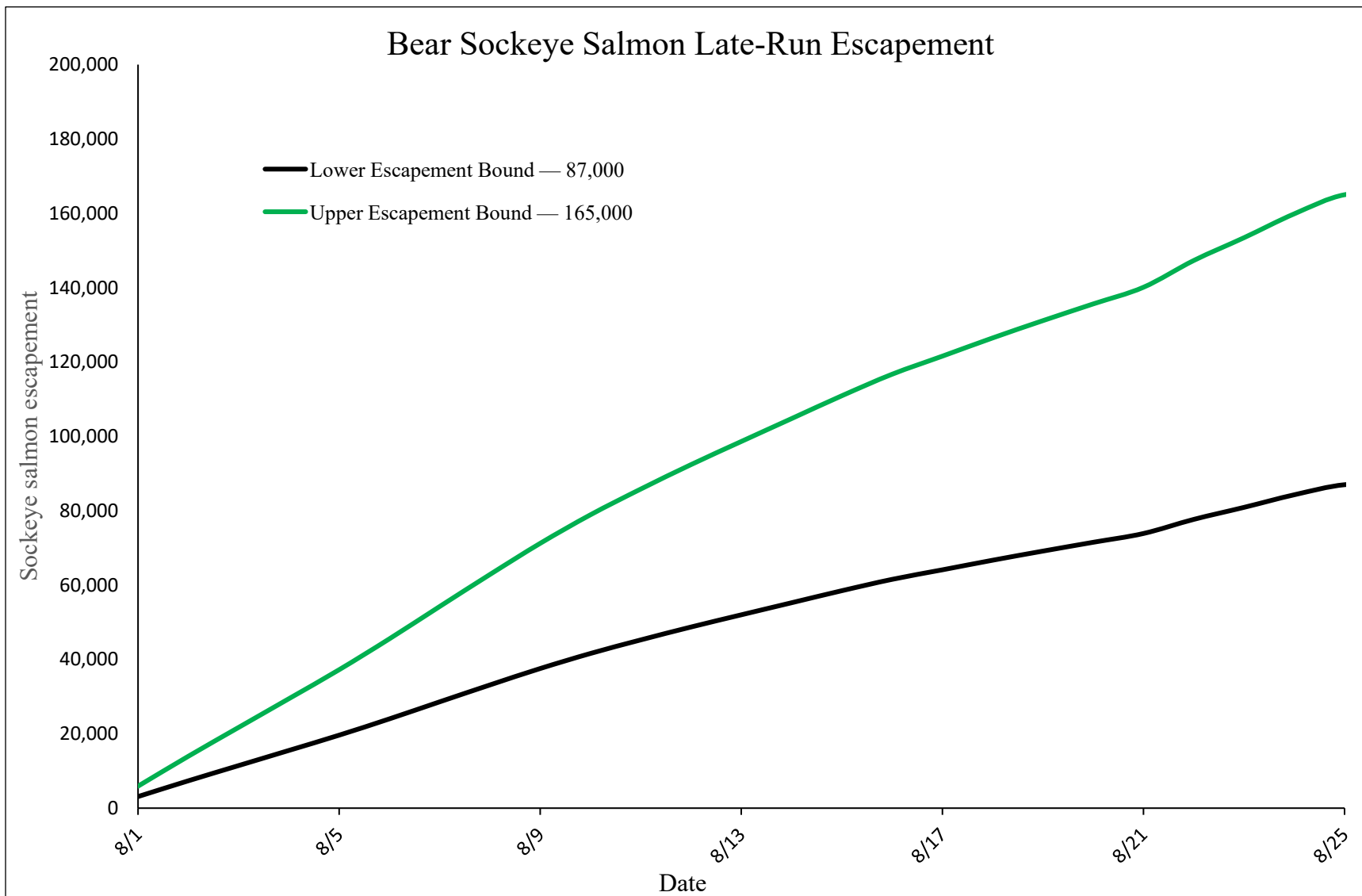
Appendix B2.—Average run timing relative to lower and upper escapement goal values for Chinook salmon into the Nelson River system.



Appendix B3.—Average run timing relative to lower and upper escapement goal values for early-run sockeye salmon into the Bear River system.



Appendix B4.—Average run timing relative to lower and upper escapement goal values for late-run sockeye salmon into the Bear River system.



Appendix B5.—Average run timing relative to lower and upper escapement goal values for sockeye salmon into the Ilnik River system.

