

Fishery Management Report No. 15-15

Alaska Salmon Fisheries Enhancement Program 2014 Annual Report

by

Lorraine Vercessi

March 2015

Alaska Department of Fish and Game

Divisions of Sport Fish and Commercial Fisheries



Symbols and Abbreviations

The following symbols and abbreviations, and others approved for the Système International d'Unités (SI), are used without definition in the following reports by the Divisions of Sport Fish and of Commercial Fisheries: Fishery Manuscripts, Fishery Data Series Reports, Fishery Management Reports, and Special Publications. All others, including deviations from definitions listed below, are noted in the text at first mention, as well as in the titles or footnotes of tables, and in figure or figure captions.

Weights and measures (metric)		General		Mathematics, statistics	
centimeter	cm	Alaska Administrative Code	AAC	all standard mathematical signs, symbols and abbreviations	
deciliter	dL	all commonly accepted abbreviations	e.g., Mr., Mrs., AM, PM, etc.	alternate hypothesis	H _A
gram	g	all commonly accepted professional titles	e.g., Dr., Ph.D., R.N., etc.	base of natural logarithm	<i>e</i>
hectare	ha			catch per unit effort	CPUE
kilogram	kg			coefficient of variation	CV
kilometer	km	at	@	common test statistics	(F, t, χ^2 , etc.)
liter	L			confidence interval	CI
meter	m			compass directions:	correlation coefficient
milliliter	mL	east	E	(multiple)	R
millimeter	mm	north	N	correlation coefficient (simple)	r
Weights and measures (English)		south	S	covariance	cov
cubic feet per second	ft ³ /s	west	W	degree (angular)	°
foot	ft	copyright	©	degrees of freedom	df
gallon	gal	corporate suffixes:		expected value	<i>E</i>
inch	in	Company	Co.	greater than	>
mile	mi	Corporation	Corp.	greater than or equal to	≥
nautical mile	nmi	Incorporated	Inc.	harvest per unit effort	HPUE
ounce	oz	Limited	Ltd.	less than	<
pound	lb	District of Columbia	D.C.	less than or equal to	≤
quart	qt	et alii (and others)	et al.	logarithm (natural)	ln
yard	yd	et cetera (and so forth)	etc.	logarithm (base 10)	log
Time and temperature		exempli gratia		logarithm (specify base)	log ₂ , etc.
day	d	(for example)	e.g.	minute (angular)	'
degrees Celsius	°C	Federal Information Code	FIC	not significant	NS
degrees Fahrenheit	°F	id est (that is)	i.e.	null hypothesis	H ₀
degrees kelvin	K	latitude or longitude	lat. or long.	percent	%
hour	h	monetary symbols		probability	P
minute	min	(U.S.)	\$, ¢	probability of a type I error	
second	s	months (tables and figures): first three letters	Jan,...,Dec	(rejection of the null hypothesis when true)	α
Physics and chemistry		registered trademark	®	probability of a type II error	
all atomic symbols		trademark	™	(acceptance of the null hypothesis when false)	β
alternating current	AC	United States		second (angular)	"
ampere	A	(adjective)	U.S.	standard deviation	SD
calorie	cal	United States of America (noun)	USA	standard error	SE
direct current	DC	U.S.C.	United States Code	variance	
hertz	Hz			population sample	Var
horsepower	hp				var
hydrogen ion activity (negative log of)	pH	U.S. state	use two-letter abbreviations (e.g., AK, WA)		
parts per million	ppm				
parts per thousand	ppt, ‰				
volts	V				
watts	W				

FISHERY MANAGEMENT REPORT 15-15

**ALASKA SALMON FISHERIES ENHANCEMENT PROGRAM
2014 ANNUAL REPORT**

by

Lorraine Vercessi

Alaska Department of Fish and Game, Division of Commercial Fisheries, Juneau

Alaska Department of Fish and Game
Division of Sport Fish, Research and Technical Services
333 Raspberry Road, Anchorage, Alaska, 99518-1565

March 2015

The Fishery Management Reports series was established in 1989 by the Division of Sport Fish for the publication of an overview of management activities and goals in a specific geographic area, and became a joint divisional series in 2004 with the Division of Commercial Fisheries. Fishery Management Reports are intended for fishery and other technical professionals, as well as lay persons. Fishery Management Reports are available through the Alaska State Library and on the Internet: <http://www.adfg.alaska.gov/sf/publications/>. This publication has undergone regional peer review.

*Lorraine Vercessi,
Alaska Department of Fish and Game, Division of Commercial Fisheries
Headquarters Office, 1255 West 8th Street, P.O. Box 115526, Juneau, Alaska, USA*

This document should be cited as:

Vercessi, L. 2014. Alaska salmon fisheries enhancement program 2013 annual report. Alaska Department of Fish and Game, Fishery Management Report 15-15, Anchorage.

The Alaska Department of Fish and Game (ADF&G) administers all programs and activities free from discrimination based on race, color, national origin, age, sex, religion, marital status, pregnancy, parenthood, or disability. The department administers all programs and activities in compliance with Title VI of the Civil Rights Act of 1964, Section 504 of the Rehabilitation Act of 1973, Title II of the Americans with Disabilities Act (ADA) of 1990, the Age Discrimination Act of 1975, and Title IX of the Education Amendments of 1972.

If you believe you have been discriminated against in any program, activity, or facility please write:

ADF&G ADA Coordinator, P.O. Box 115526, Juneau, AK 99811-5526

U.S. Fish and Wildlife Service, 4401 N. Fairfax Drive, MS 2042, Arlington, VA 22203

Office of Equal Opportunity, U.S. Department of the Interior, 1849 C Street NW MS 5230, Washington DC 20240

The department's ADA Coordinator can be reached via phone at the following numbers:

(VOICE) 907-465-6077, (Statewide Telecommunication Device for the Deaf) 1-800-478-3648, (Juneau TDD) 907-465-3646, or (FAX) 907-465-6078

For information on alternative formats and questions on this publication, please contact:

ADF&G Division of Sport Fish, Research and Technical Services, 333 Raspberry Road, Anchorage AK 99518 (907) 267-2375.

TABLE OF CONTENTS

	Page
LIST OF FIGURES	i
LIST OF TABLES.....	i
DEFINITION OF TERMS	iii
NAMES FOR ALASKA’S PACIFIC SALMON SPECIES	iii
ABSTRACT	1
INTRODUCTION	1
HATCHERIES	3
ANNUAL REPORT	6
2014 HIGHLIGHTS	13
REGIONAL CONTRIBUTION	13
REFERENCES CITED	14
TABLES	15

LIST OF FIGURES

Figure	Page
1. Commercial harvest of salmon in Alaska, 1900–2014.	2
2. Alaska’s salmon planning regions.	3
3. Number of hatchery facilities in Alaska, 1970–2014.	4
4. Locations of hatcheries in Alaska.....	5
5. Total salmon eggs collected and adult returns for Alaska salmon hatchery programs, 1977–2014.	7
6. Total salmon eggs collected and juveniles released for Alaska salmon hatchery programs, 1977–2014.....	7
7. Total adult salmon returns to the Alaska salmon hatchery program, 1977–2014, with the recent 10-year average.	8
8. Alaska salmon hatchery returns, by species, in 2014.	8
9. Alaska salmon hatchery returns of chum and pink salmon, by region, in 2014.	9
10. Alaska salmon hatchery returns contributions, in 2014.....	9
11. Percentage of Alaska hatchery-produced salmon in commercial common property harvest.	10
12. Alaska commercial harvest of wild stock and hatchery returns of salmon, 1977–2014.....	10
13. Estimated exvessel value of Alaska commercial harvest of wild stock and hatchery-produced salmon, including estimated exvessel value per fish, 1977–2014.....	11
14. Exvessel values of hatchery-produced salmon harvested in the commercial common property fishery, by species, in millions of dollars, 2014.	11
15. Alaska fisheries enhancement program contribution to commercial common property harvest (CPH) salmon fisheries, 1977–2014.....	12

LIST OF TABLES

Table	Page
1. List of hatchery acronyms used in this report.....	16
2. Estimated egg takes for Alaska hatcheries, by region, in millions, 2014.	17
3. Estimated juvenile releases from Alaska hatcheries, by region, in millions, 2014.....	17
4. Estimated total returns attributed to Alaska hatcheries (including common property harvest, cost recovery harvest, broodstock, and escapement), by region, 2014.	17
5. Alaska (preliminary) commercial harvest of hatchery-produced fish, by region, in thousands of fish, 2014.....	18
6. Estimated exvessel value of the total Alaska commercial common property harvest (preliminary), by region, in thousands of dollars, 2014.....	19

LIST OF TABLES (Continued)

Table	Page
7. Alaska commercial salmon fishery harvest average weights and prices (preliminary), 2014.	20
8. Eggs collected at Alaska hatcheries, in millions, 2014 (transferred eggs are listed with the receiving hatchery).	21
9. Alaska hatcheries releases, in millions of fish, as reported by operators, 2014.	22
10. Estimated returns to Alaska fisheries enhancement projects (including common property harvests), by species, 2014.	24
11. Projected adult returns, by species, to Alaska fisheries enhancement projects in 2015.	25
12. Details of the estimated Chinook salmon returns to Alaska fisheries enhancement projects, as reported by operators, 2014.	27
13. Details of the estimated sockeye salmon returns to Alaska fisheries enhancement projects, as reported by operators, 2014.	28
14. Details of the estimated coho salmon returns to Alaska fisheries enhancement projects, as reported by operators, 2014.	29
15. Details of the estimated pink salmon returns to Alaska fisheries enhancement projects, as reported by operators, 2014.	31
16. Details of the estimated chum salmon returns to Alaska fisheries enhancement projects, as reported by operators, 2014.	32
17. Details of the estimated “other” hatchery-produced returns to Alaska fisheries enhancement projects, as reported by operators, 2014.	33
18. Summary of salmon eggs collected in 2014 per fish resource permits issued by ADF&G. The egg number is the maximum number allowed to be collected, not necessarily the number hatched and released as juveniles, as per the permit for the particular project.	34
19. Updated Chinook salmon returns to Alaska hatcheries in 2013, including common property harvests, as reported by operators.	40
20. Updated sockeye salmon returns to Alaska hatcheries in 2013, including common property harvests, as reported by operators.	41
21. Updated coho salmon returns to Alaska hatcheries in 2013, including common property harvests, as reported by operators.	42
22. Updated pink salmon returns to Alaska hatcheries in 2013, including common property harvest, as reported by operators.	44
23. Updated chum salmon returns to Alaska hatcheries in 2013, including common property harvests, as reported by operators.	45
24. Updated “other” hatchery-produced returns to Alaska hatcheries in 2013, as reported by operators.	46
25. Summary of anadromous salmon production (all species) from Alaska hatcheries and fisheries enhancement projects.	47
26. Summary of Chinook salmon production from Alaska hatcheries and fisheries enhancement projects.	48
27. Summary of sockeye salmon production from Alaska hatcheries and fisheries enhancement projects.	49
28. Summary of coho salmon production from Alaska hatcheries and fisheries enhancement projects.	50
29. Summary of pink salmon production from Alaska hatcheries and fisheries enhancement projects.	51
30. Summary of chum salmon production from Alaska hatcheries and fisheries enhancement projects.	52
31. Summary of commercial harvest of salmon from Alaska fisheries enhancement projects, in thousands of fish.	53
32. Summary of statewide commercial harvest of hatchery-produced salmon from Alaska's fisheries enhancement projects, in thousands of fish.	54
33. Summary of commercial harvest of hatchery-produced salmon from Southeast Alaska fisheries enhancement projects, in thousands of fish.	55
34. Summary of commercial harvest of hatchery-produced salmon from Prince William Sound fisheries enhancement projects, in thousands of fish.	56
35. Summary of commercial harvest of hatchery-produced salmon from Cook Inlet fisheries enhancement projects, in thousands of fish.	57
36. Summary of commercial harvest of hatchery-produced salmon from Kodiak fisheries enhancement projects, in thousands of fish.	58
37. Actively operated Alaska hatcheries contact information, 2014.	59

LIST OF TABLES (Continued)

Table		Page
38.	Active Alaska hatcheries and hatchery permits, 2014.....	61
39.	Permitted capacity of Alaska private nonprofit hatcheries, in millions of eggs, 2014.	63
40.	Alaska salmon fisheries enhancement program timeline of events.	64

DEFINITION OF TERMS

Commercial harvest	Harvests of fish that are used for commercial purposes. This includes fish caught by the commercial common property fishery (see below) and by hatchery operators for cost recovery; it excludes sport, subsistence, and personal use harvests.
Commercial common property harvest	Harvests taken by traditional, competitive commercial fisheries (gillnet, purse seine, and troll), as opposed to commercial harvests resulting from hatchery cost recovery, fishing derbies, and sale of confiscated fish.
Common property harvest	Harvests taken by the commercial common property fisheries (see above), as well as the sport, subsistence, and personal use fisheries. This category excludes hatchery cost-recovery harvests.
Cost recovery harvest	Harvests of salmon by hatchery operators in specially designated areas to fund the operation of hatcheries and other enhancement activities.
Salmon run	Run refers to the total number of mature fish returning in a given year from ocean-rearing areas to spawn.
Return	Return refers to an aggregation of salmon over several or more years that represent the surviving adult offspring from a single brood year.

NAMES FOR ALASKA’S PACIFIC SALMON SPECIES

Common Name	Vernacular Name	Scientific Name
Chinook	king	<i>Oncorhynchus tshawytscha</i>
sockeye	red	<i>Oncorhynchus nerka</i>
coho	silver	<i>Oncorhynchus kisutch</i>
pink	humpy, humpback	<i>Oncorhynchus gorbuscha</i>
chum	dog	<i>Oncorhynchus keta</i>

ABSTRACT

The State of Alaska initiated its salmon fisheries enhancement program in response to depressed commercial salmon fisheries. Regions are designated around the state for the purpose of fisheries planning. Enhancement efforts are guided by regional comprehensive salmon plans. The Alaska Department of Fish and Game (ADF&G) oversees and regulates all state and private sector salmon fisheries enhancement and rehabilitation projects. The success of this program is attributable to the development of statutes, regulations, and policies that require hatcheries to be located away from important natural salmon stocks, the use of local broodstock sources, and priorities in fisheries management that provide protection for naturally occurring stocks. Fisheries enhancement services include planning, permitting, data management, and technical services. Geneticists, pathologists, and biologists review all projects prior to the issuance of a permit to operate a salmon hatchery, take or transfer eggs or fish, or release any fish into Alaska waters. Pathology, genetic, coded wire tag, and otolith processing laboratories provide inseason information to ADF&G fishery managers and technical expertise to the private sector. All returning adult fish are available for harvest in Alaska's common property fisheries open to the public.

In 2014, hatchery operators collected an estimated 2.0 billion eggs and released 1.8 billion juvenile fish. Approximately 62.1 million hatchery-produced salmon returned, with the majority (42 million) being pink salmon produced by hatcheries in Prince William Sound. The preliminary total statewide commercial salmon harvest was 157 million fish, with 149 million salmon harvested in the commercial common property fishery. An estimated 51 million fish, or 34% of the commercial common property harvest, were produced by the Alaska salmon hatcheries. Approximately 7 million salmon were harvested for hatchery cost recovery. The return of hatchery salmon provided an estimated \$113 million, or 20%, of the exvessel value of the statewide commercial common property harvest.

Key words: Alaska salmon fisheries enhancement, salmon hatchery, annual report, private nonprofit corporation, Southeast Alaska, Prince William Sound, Cook Inlet, Kodiak, egg take, cost recovery, Chinook, pink, chum, coho, sockeye

INTRODUCTION

When state management of Alaska's salmon fisheries began in 1960, salmon abundance was historically low. In time, it was realized that effective fisheries management alone was not increasing abundance. In response to the low commercial salmon fishery harvests and the resulting economic loss, the State of Alaska initiated a salmon fisheries enhancement program. In 1971, the legislature created the Division of Fisheries Rehabilitation, Enhancement, and Development (FRED) within the Alaska Department of Fish and Game (ADF&G), which was tasked with planning the rehabilitation, enhancement, and development of all aspects of the state's fisheries, ensuring perpetual and increasing production and use, and encouraging investment by private enterprise (AS 16.05.092). Along with the efforts of FRED Division, the state promoted resource conservation by enacting limited entry fishing beginning in 1973, followed by the creation of the private nonprofit (PNP) hatchery program in 1974 (Figure 1). The intent of the program was to meet the public need in fisheries by conserving wild stock salmon while contributing to the harvest by increasing salmon abundance through enhancement efforts (Alaska Legislature 1974).

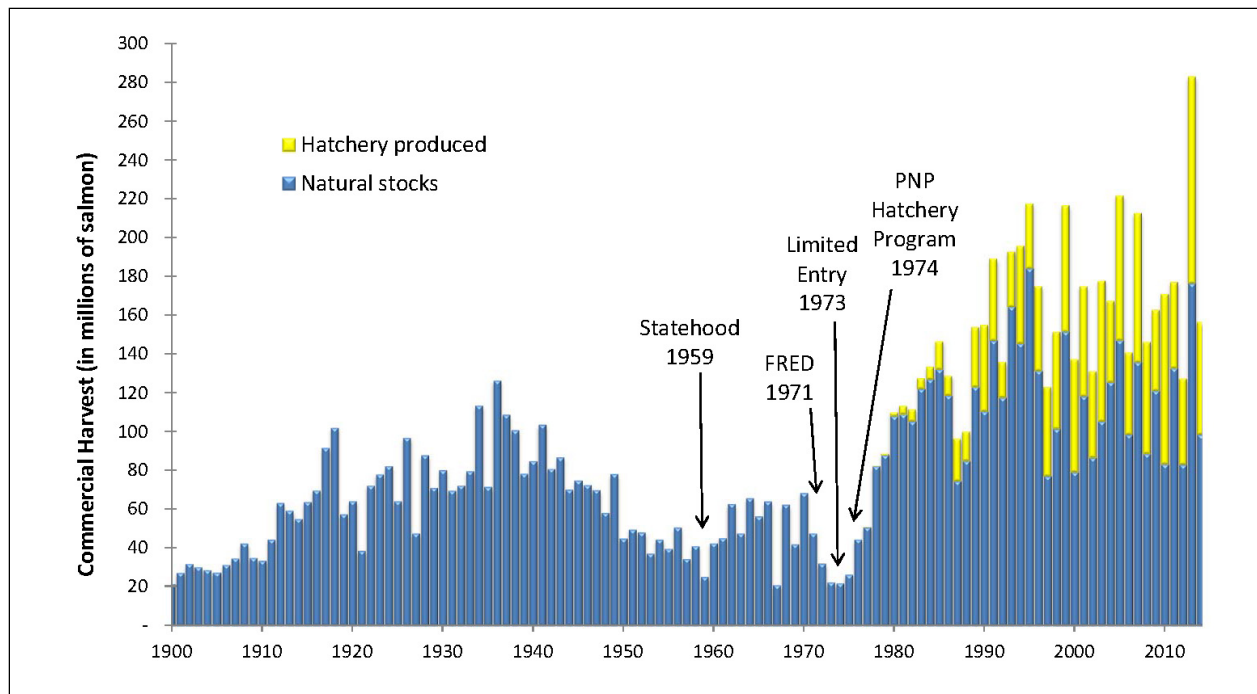


Figure 1.—Commercial harvest of salmon in Alaska, 1900–2014.

In 1976, a law was enacted that directed the commissioner of ADF&G to designate regions around the state for the purpose of salmon production and planning (AS 16.10.375). Within each designated region (Figure 2), a regional planning team (RPT) assembled, consisting of ADF&G personnel and representatives of the qualified regional aquaculture association comprised of commercial, sport, and subsistence fishermen, processors, and members of the local communities. The primary purpose of an RPT is to develop a regional comprehensive salmon plan (CSP) for their respective region (5 AAC 40.300). Each regional CSP is designed to guide the enhancement efforts regarding development and protection of salmon resources by providing production goals, objectives, and strategies. Plans are developed with consideration of the needs of fisheries user groups and communities of the region. The approved plans are designed to have an effective term in which to consider meeting objectives, with the ability to periodically review the plan and update them as considered necessary to meet the changing needs of the region. The RPTs also review hatchery permit applications and ongoing and proposed fisheries enhancement projects, and provide recommendations to the commissioner on such subjects. The responsibility of the RPT is to ensure that the proposed projects are within the scope of the regional CSP. RPTs continue to be responsible for ensuring that the public has the opportunity to review and provide comment on fisheries enhancement projects. The goal is to optimize public benefit without harming wild salmon stocks. Alaska statutes, regulations, and policies have been developed over time to guide fisheries enhancement.

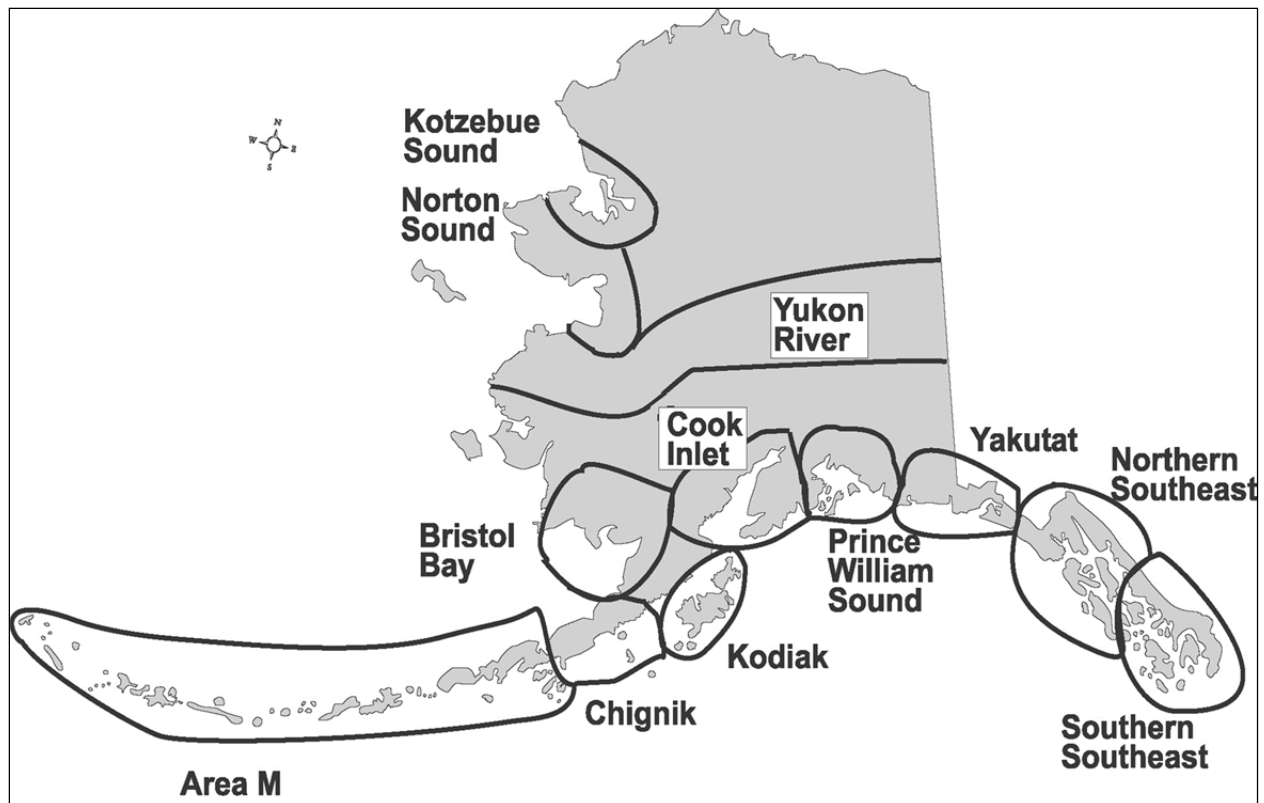


Figure 2.—Alaska’s salmon planning regions.

In 1993, the FRED Division merged with the ADF&G Division of Commercial Fisheries, which continues to oversee and regulate all state and private sector fisheries enhancement and rehabilitation projects. Alaska’s robust hatchery program has produced sustainable, healthy, and well-managed salmon stocks. The success of this program is attributable to the development of statutes, regulations, and policies that require hatcheries to be located away from important natural salmon stocks, the use of local broodstock sources, and priorities in fisheries management that provide protection for naturally-occurring stocks. ADF&G fisheries enhancement related services include planning, permitting, data management, and technical services. ADF&G maintains pathology, genetic, coded wire tag, and otolith processing laboratories that provide inseason information to ADF&G fishery managers and technical expertise to the private sector. Constant vigilance on the part of ADF&G and hatchery operators to improve the program through ongoing analysis of hatchery performance, along with the continued strength, support, and infrastructure of the RPTs, assures that Alaska fisheries continue to benefit the economy and well-being of the people of the state.

HATCHERIES

Alaska, as a state, funded the construction of hatcheries with a general obligation bond passed by the legislature and approved by the public. Between 1969 and 1983, 18 state hatcheries were constructed across the state and operated by the FRED Division. In 1988, the legislature passed an act that allowed contracting the operations of state hatcheries to the PNP hatchery corporations (AS 16.10.480). The private sector is the primary producer of salmon in Alaska

(Figure 3). In 2014, there were 31 PNP-owned or -operated hatcheries, 3 state-owned and -operated hatcheries, and 3 federally-regulated facilities. Five PNP hatchery facilities were inactive, and 1 PNP hatchery and 1 state sport fish hatchery released juvenile fish prior to closure in 2014. Alaska salmon fisheries enhancement projects were implemented by the following active facilities:

- 15 PNP corporation-owned and operated hatcheries
- 11 state-owned hatcheries operated under contract by PNP corporations
- 2 federal research facilities
- 1 tribal hatchery
- 3 state-owned and operated Division of Sport Fish hatcheries

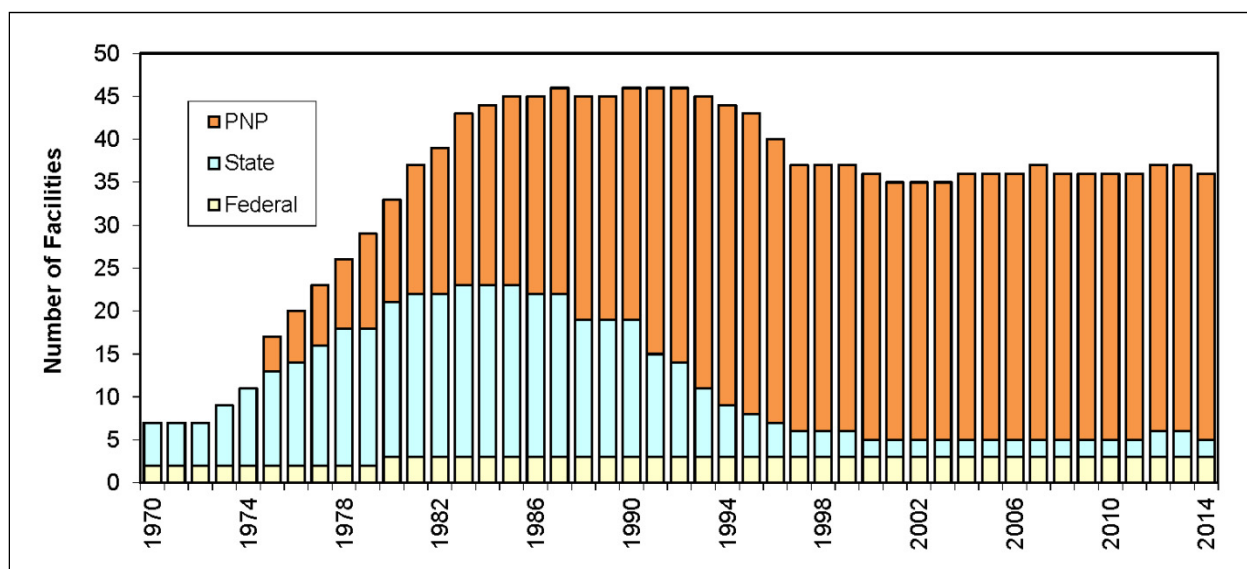


Figure 3.—Number of hatchery facilities in Alaska, 1970–2014.

All returning adult fish are available for harvest in Alaska’s common property fisheries (CPF), which are open to the public (commercial, sport, personal use, and subsistence). PNP hatcheries produce salmon primarily for commercial common property harvest (CPH), as well as for cost-recovery harvest by the hatchery to pay for operations. The ADF&G Division of Sport Fish hatcheries produce juvenile fish, including salmon, trout, Arctic char (*Salvelinus alpinus*), and Arctic grayling (*Thymallus arcticus*), intended for both salt and fresh water recreational fisheries at many locations along the coast and in numerous interior lakes. Two federal hatcheries are low-production facilities that focus on research. One federally recognized tribe, the Metlakatla Indian Community, operates a hatchery within the federal Annette Island Reserve in southern Southeast Alaska. A map with the locations of hatcheries within Alaska is provided in Figure 4.

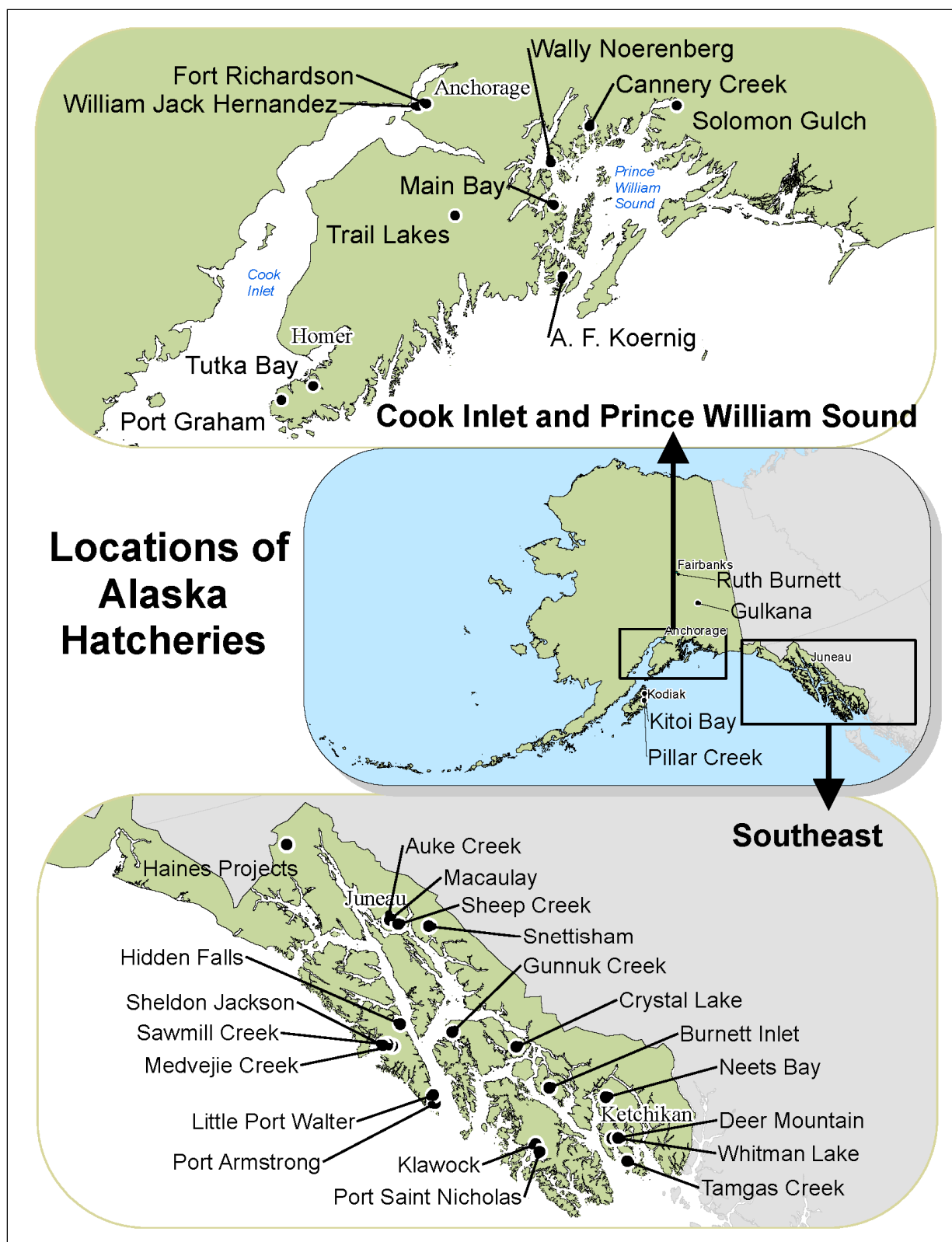


Figure 4.—Locations of hatcheries in Alaska.

Protection of Alaska's natural salmon stocks requires stringent permitting processes. Before permitting the construction or operation of a private nonprofit salmon hatchery in Alaska, an extensive review of the proposed hatchery, including the suitability of the proposed site, hatchery design, contribution to Alaska's CPF, and the potential effects on natural salmon stocks, is conducted. ADF&G provides fisheries management considerations, among other information, to accompany applications for RPTs to review. The RPT must determine if the proposed hatchery is compatible with the regional comprehensive salmon enhancement plan. A public hearing and comment period provides time for local community members and fisheries stakeholders to ask questions and provide comments on all aspects of the proposed facility. The ADF&G commissioner renders a final decision for the hatchery permit, based on the completed review, as described in regulations for PNP salmon hatchery permit application procedures (5 AAC 40.110–40.220).

Prior to a hatchery conducting fish culture operations, additional review and permitting is required for the take or transfer of eggs or fish, or the release of any fish into Alaska waters, as required by regulation (5 AAC 41.001–41.100). Geneticists, pathologists, and biologists review all portions of each specific hatchery project prior to the issuance of a permit. Reviews are based on established ADF&G policies that provide guidelines and criteria for their respective areas of expertise for the purpose of developing a rigorous and healthy fisheries enhancement program while minimizing potentially negative effects on wild stocks.

Hatchery annual management plans are developed cooperatively by each hatchery permit holder and ADF&G fishery managers to guide the current year operations regarding egg take, stocking, production goals, and harvest management of hatchery returns, which includes fish harvested in CPF and by hatcheries for use as broodstock and cost recovery.

ANNUAL REPORT

For the years 1973 through 1992, an annual report summarizing each year's fisheries enhancement information was produced by the FRED Division and made available to the Alaska State Legislature, as required by Alaska Statute. The FRED reports were titled *Annual Report to the Alaska State Legislature*. The annual reports summarized the FRED Division's program developments, technology and development work, project evaluations, detailed operational budgets, and also reported FRED Division and PNP fisheries enhancement efforts and production. Beginning in 1993, with the merger of the FRED Division with the Division of Commercial Fisheries, the annual report became known as the "Alaska Fisheries Enhancement Program Annual Report" and continues to be provided to the Alaska State Legislature and is available to the public each year. The annual report format has evolved along with the fisheries in Alaska. The purpose of this report is to provide a view of Alaska's annual hatchery production and contributions to Alaska's fisheries. It is a summary of the detailed annual hatchery reports.

Hatchery permit holders are required to submit an annual report that includes details of egg takes, releases, and adult returns (AS 16.10.470). The annual report includes production information specific to the species and stock used, beginning with the number of spawners (broodstock) and eggs collected and including the survivals and releases of the previous years' progeny. It also includes an inventory of remaining juvenile fish on hand and projected returns from previous releases.

The number of eggs collected each year for use at hatcheries is limited by the permitted capacity but is also dependent on the number of adult fish returning to the hatchery that are available for use as broodstock. In years when the return is small, it is more difficult for hatcheries to achieve egg-take goals necessary for the expected fish production; however, hatcheries are normally able to operate at planned capacities. The average number of eggs collected has been generally consistent for some time, with increases in some permitted capacities in recent years. The number of eggs collected in 2014 was near average, ranking third in comparison to the last 10 years (Figure 5). In 2014, the number of juvenile fish released was the highest reported (as a result of the previous year's record adult salmon returns) and, subsequently, egg takes increased to come close to permitted goals (Figure 6).

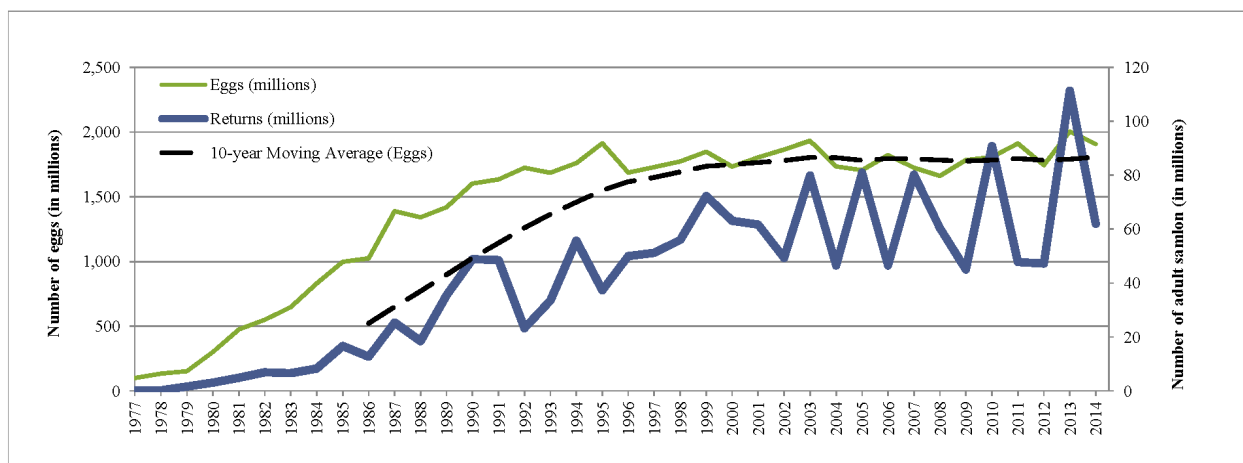


Figure 5.—Total salmon eggs collected and adult returns for Alaska salmon hatchery programs, 1977–2014.

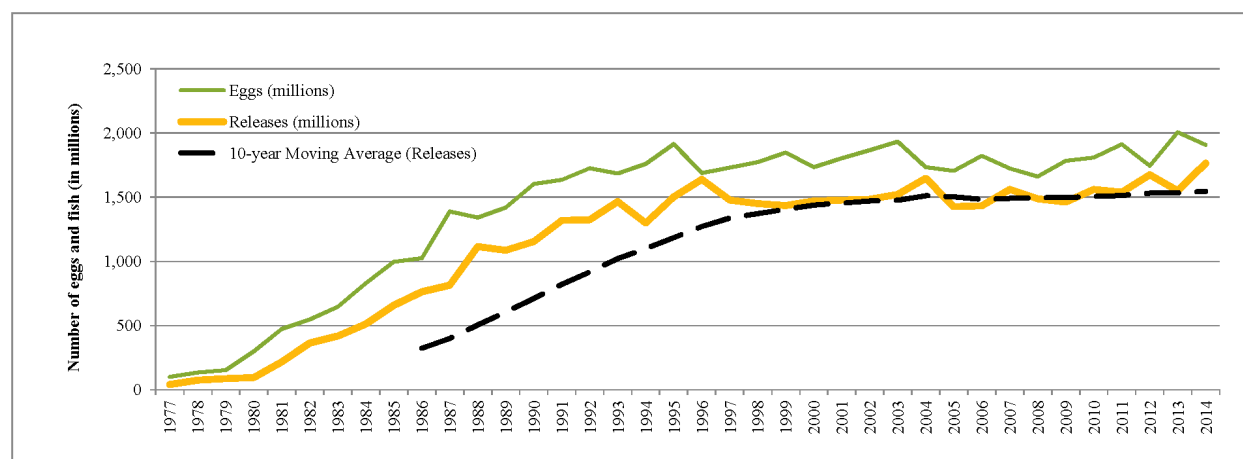


Figure 6.—Total salmon eggs collected and juveniles released for Alaska salmon hatchery programs, 1977–2014.

The 2014 return estimate of hatchery-produced salmon was slightly below average, the eighth highest return reported (Figure 7). Prince William Sound and Southeast Alaska have the greatest amount of salmon fisheries enhancement activity in the state, with pink (*Oncorhynchus*

gorbuscha) and chum (*O. keta*) salmon the predominant species produced (Figure 8). Prince William Sound had the majority of the return of hatchery-produced pink salmon in 2014, while the chum salmon returns were largely to Southeast Alaska (Figure 9). The Cook Inlet and Kodiak areas also have significant fisheries enhancement programs. The Arctic-Yukon-Kuskokwim region has a specific program for sport fishery enhancement that is orchestrated by the ADF&G Division of Sport Fish. This program is centralized in the Fairbanks area and stocks fish into numerous lakes in the region.

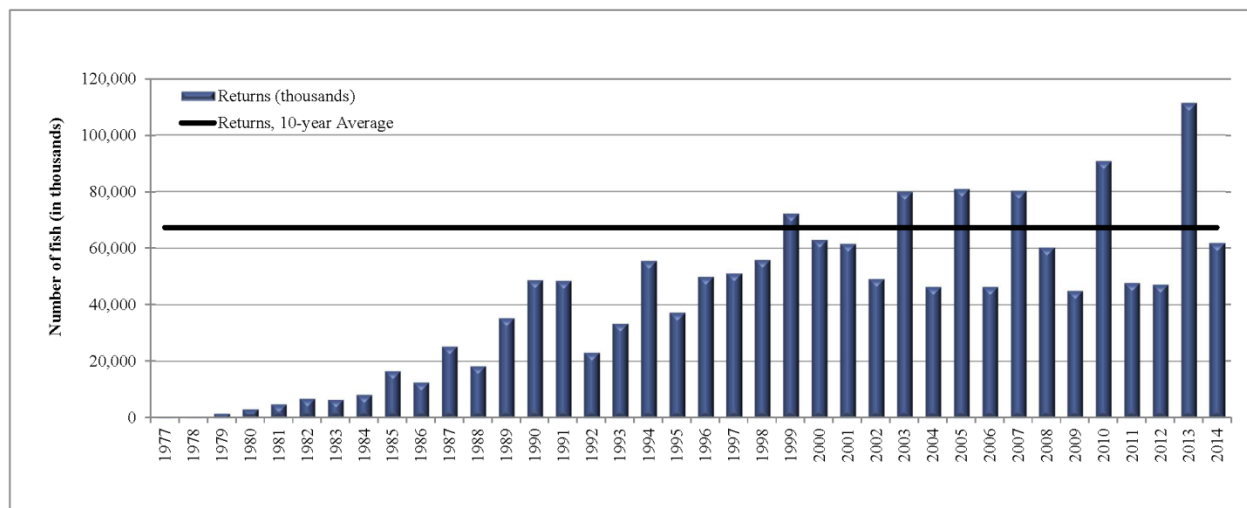


Figure 7.—Total adult salmon returns to the Alaska salmon hatchery program, 1977–2014, with the recent 10-year average.

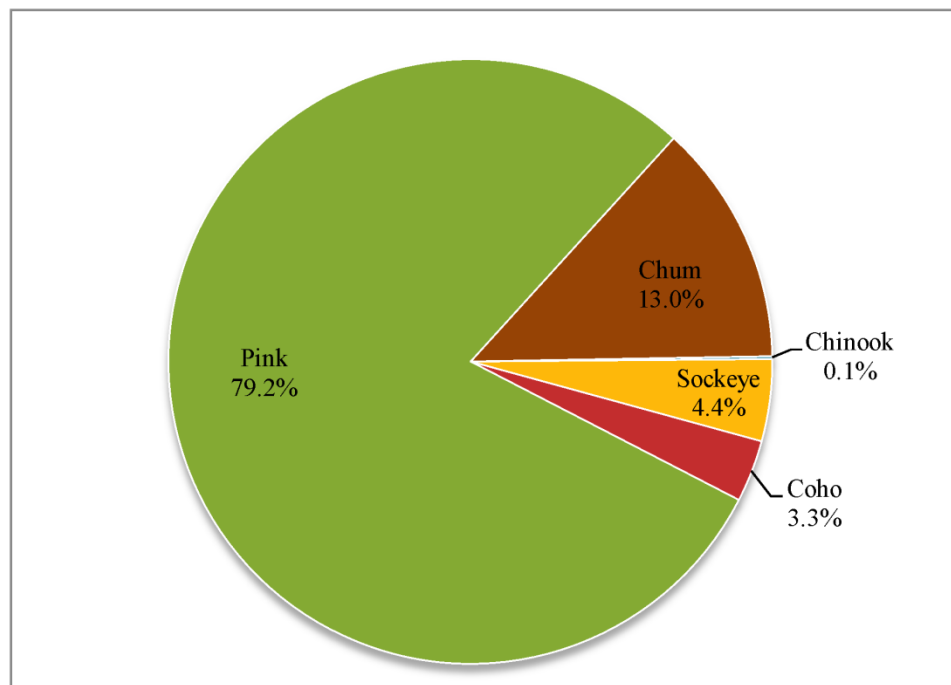


Figure 8.—Alaska salmon hatchery returns, by species, in 2014.

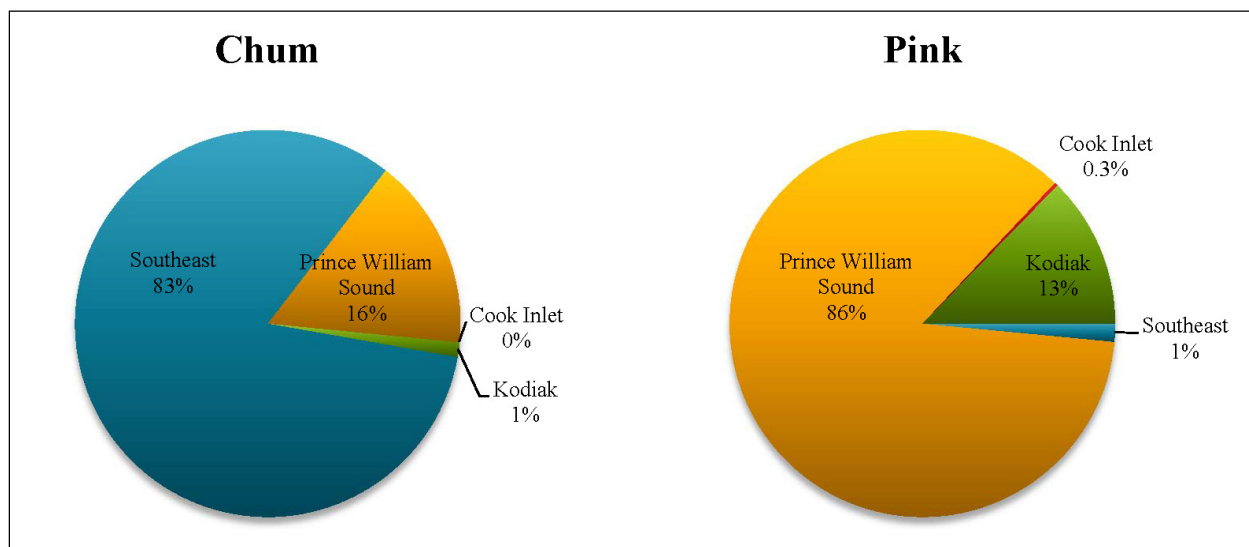


Figure 9.—Alaska salmon hatchery returns of chum and pink salmon, by region, in 2014.

The majority of hatchery production is harvested commercially, benefiting the economy of coastal communities across much of the state (Figure 10). A majority of the commercially harvested hatchery-produced salmon contribute to the commercial CPH (Figure 11). The contribution of hatchery-produced salmon to the commercial harvest enhances fisheries and can decrease fishing pressure on naturally-spawned wild salmon stocks (Figure 12). The average exvessel value of the commercial salmon harvest continues to increase, while the 2014 estimated overall exvessel value was near average (Figure 13). In 2014, hatchery-produced pink salmon contributed 39% and hatchery-produced chum salmon contributed 27% of the total exvessel value of the commercial CPH. The value of the economic contribution for each of the hatchery-produced salmon species harvested in commercial CPF in 2014 is illustrated in Figure 14. Hatchery-produced salmon contribute significantly to the commercial CPH in Alaska each year (Figure 15).

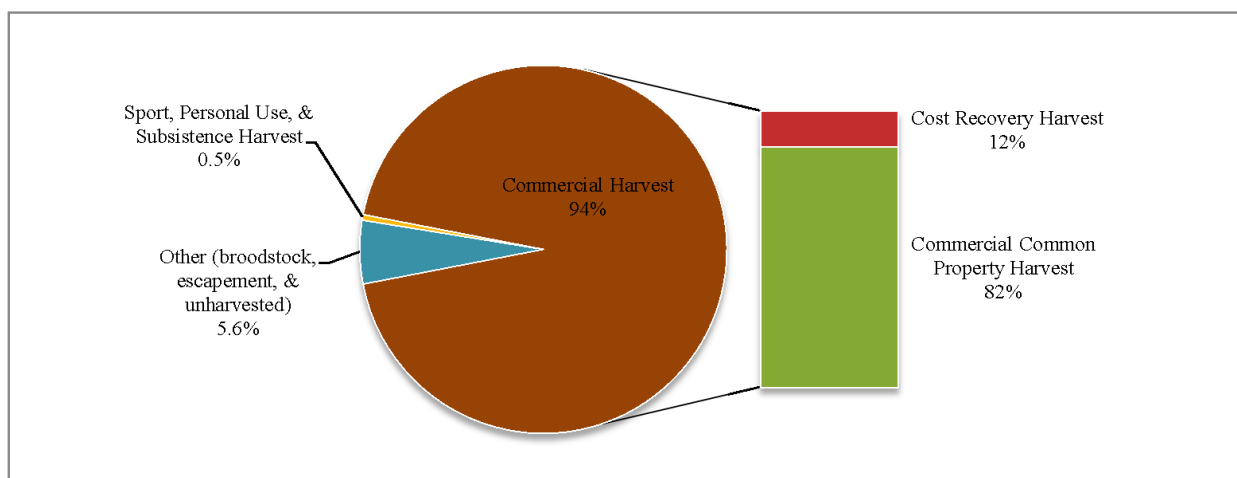


Figure 10.—Alaska salmon hatchery returns contributions, in 2014.

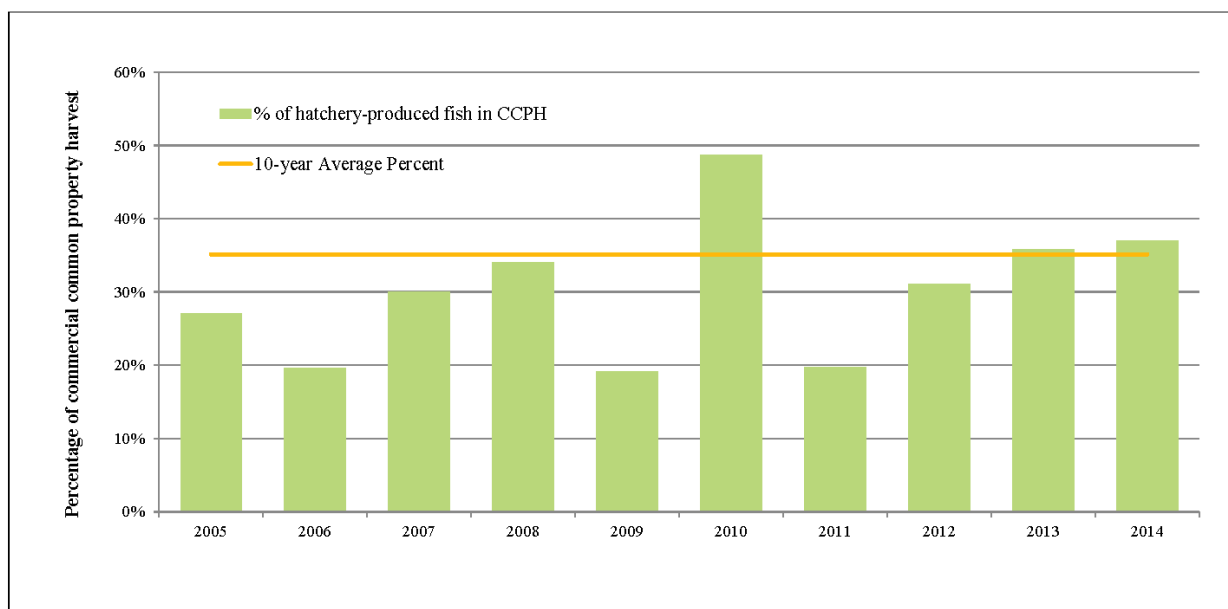


Figure 11.—Percentage of Alaska hatchery-produced salmon in commercial common property harvest.

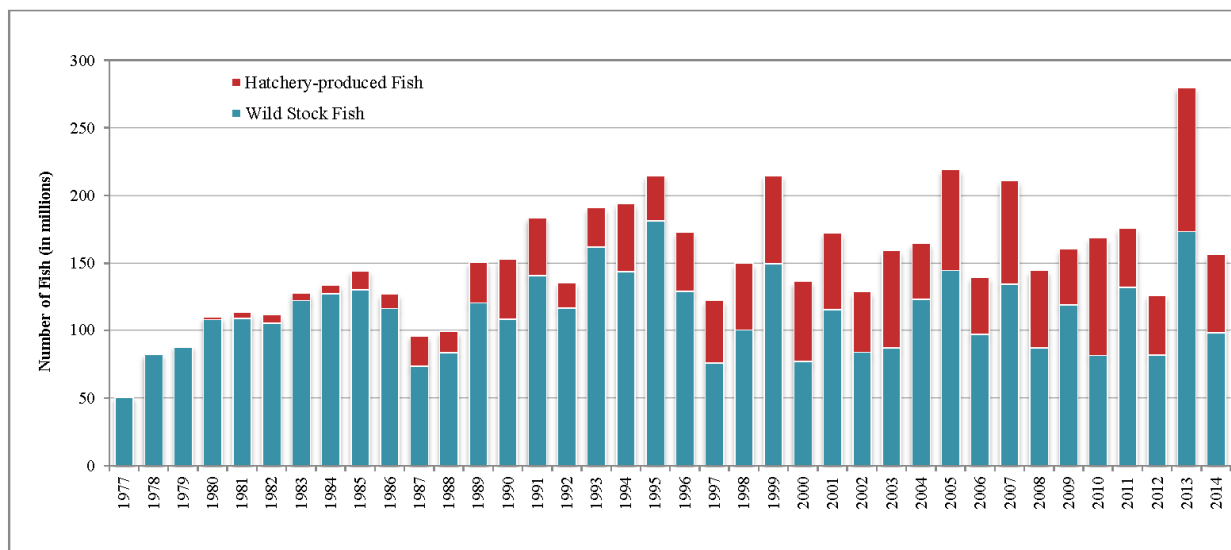


Figure 12.—Alaska commercial harvest of wild stock and hatchery returns of salmon, 1977–2014.

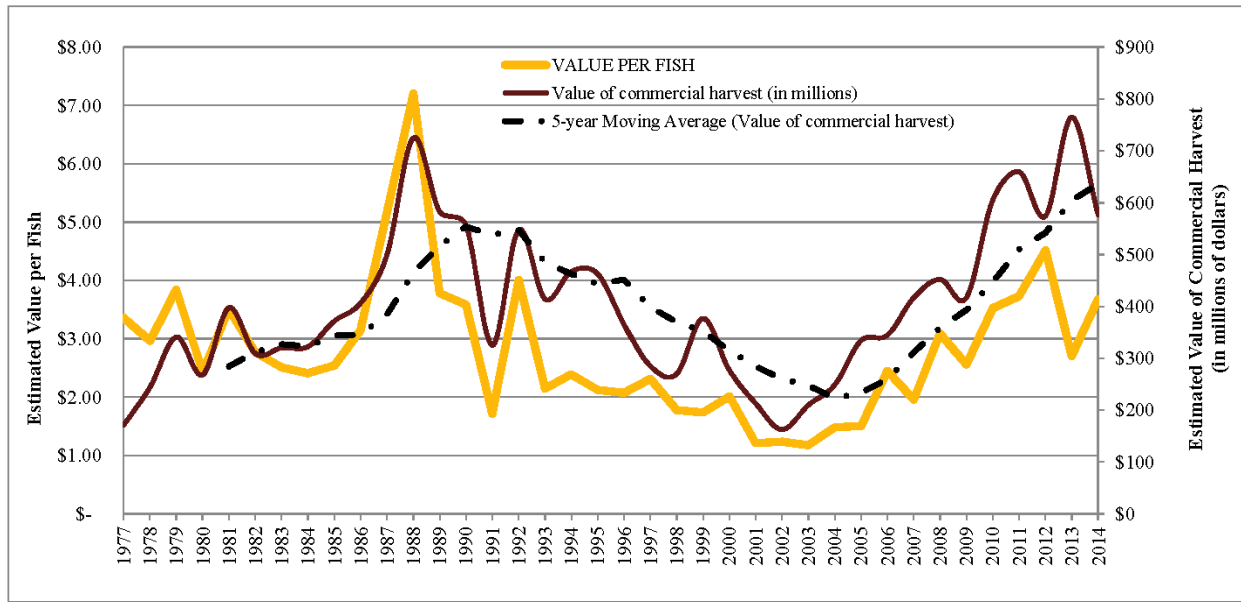


Figure 13.—Estimated exvessel value of Alaska commercial harvest of wild stock and hatchery-produced salmon, including estimated exvessel value per fish, 1977–2014.

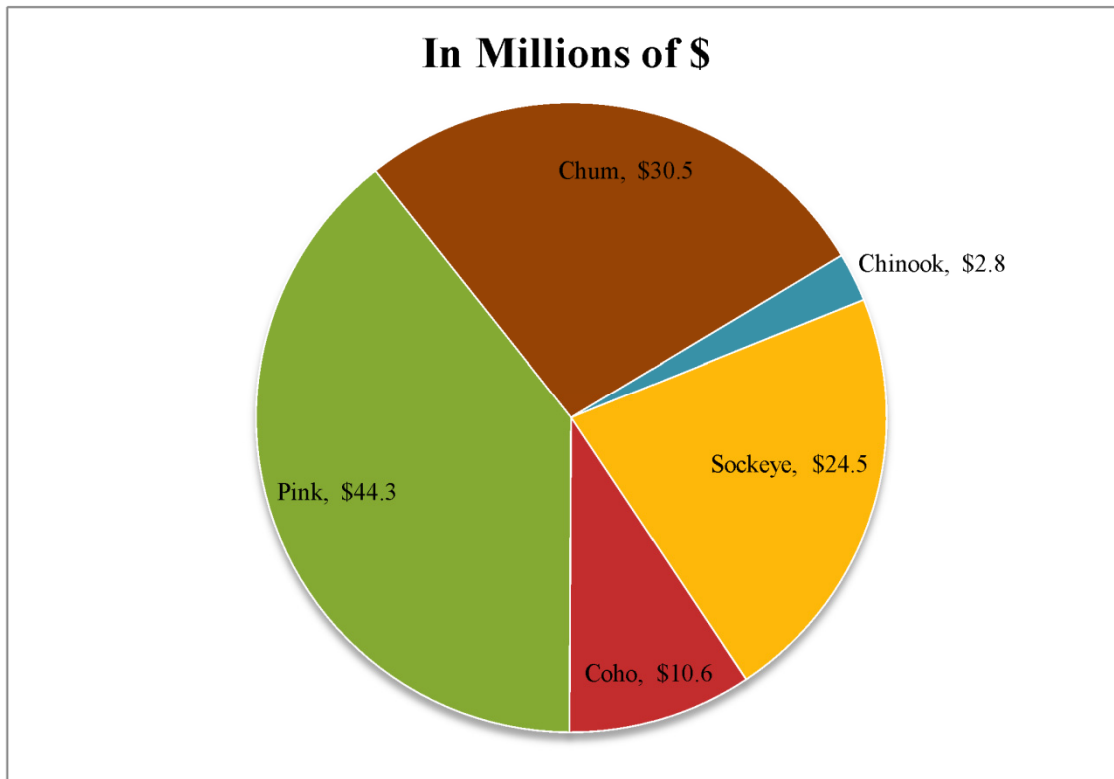


Figure 14.—Exvessel values of hatchery-produced salmon harvested in the commercial common property fishery, by species, in millions of dollars, 2014.

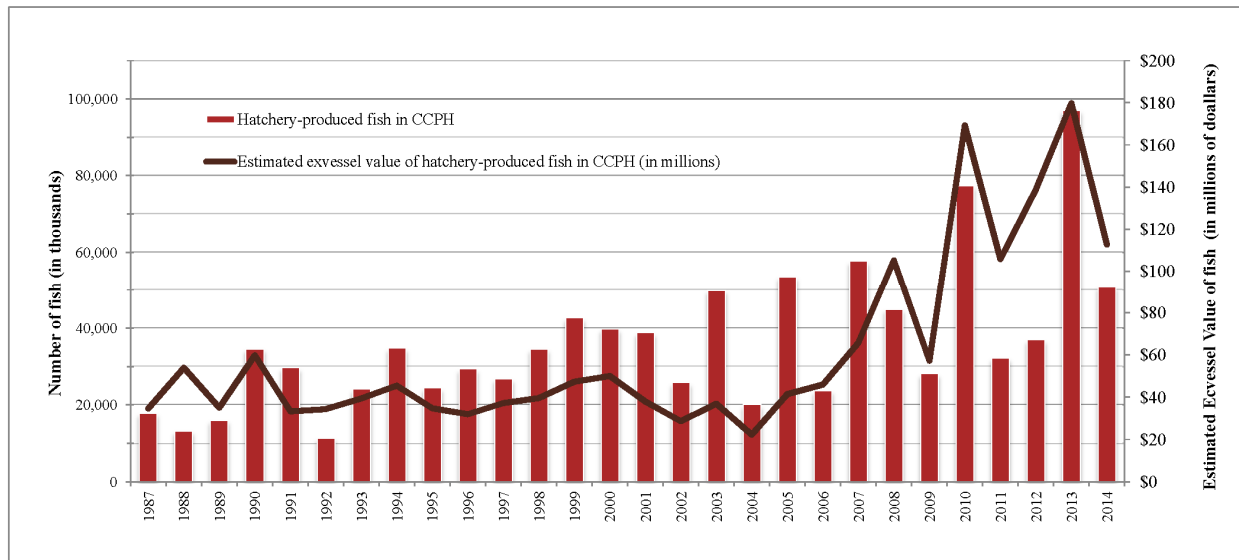


Figure 15.—Alaska fisheries enhancement program contribution to commercial common property harvest (CPH) salmon fisheries, 1977–2014.

Hatchery industry acronyms used in this publication are listed in Table 1. The most recent Alaska hatcheries’ production and fisheries enhancement data, for 2014, are provided in Tables 2–19. Data are arranged based on salmon fisheries enhancement planning and management regions and species. The 2014 summaries are provided in Tables 2–4. Commercial harvest (common property and cost-recovery harvests) and value data with details regarding the economic contribution of hatchery-produced fish are provided in Tables 5–7. Hatchery data for reported egg takes, releases, returns, and next year’s projected returns have been arranged by region and species in Tables 8–11. Details of the estimated returns by gear group and other user groups have been arranged for each species in Tables 12–17.

A summary of all fish resource permits that were issued in 2014 that allowed for the collection of broodstock and/or eggs is provided in Table 18. Multiple types of salmon fish resource permits are issued each year to accredited institutions of higher learning and for cooperative governmental projects for research, bioenhancement, educational, vocational, and scientific purposes. Eggs collected under scientific and educational permits are for classroom incubation projects and in many cases are provided by hatcheries and not released.

Each year, hatchery operators include in their annual report updates to the previous years’ estimated adult salmon return numbers that were previously reported (Vercessi 2014). The updated numbers are highlighted in Tables 19–24. Annual summaries are provided in Tables 25–36, including summaries of eggs collected, juvenile releases, adult returns by year, and commercial harvest summaries.

Additional information, such as Alaska hatchery operators’ contact information, active hatchery permits, permitted capacities by region and hatchery, and Alaska fisheries enhancement program timeline of events, can be found in Tables 37–40.

2014 HIGHLIGHTS

- The Alaska salmon fisheries enhancement program adult return was estimated at 62 million fish in 2014.
- Hatchery-produced coho salmon returned in record numbers in 2014. The majority of the return, an estimated 1.6 million coho salmon (*O. kisutch*), returned to Southeast Alaska, contributing 27% of the regions coho salmon commercial CPH.
- An estimated 231,000 hatchery-produced coho salmon were commercially harvested in the Kodiak region in 2014, a record harvest for the region.
- The preliminary total statewide commercial salmon harvest was 157 million fish, with an estimated exvessel value of \$578 million. Hatchery contribution of salmon to the commercial harvest was estimated at 58 million salmon.
- The contribution to the commercial CPH in 2014 is estimated to be 51 million hatchery-produced salmon. They were harvested in the seine, gillnet, and troll fisheries with a preliminary exvessel value of \$113 million.
- Statewide, the fisheries enhancement program contributed 34% of the salmon in the commercial CPH: 56% of the chum, 47% of the pink, 23% of the coho, 12% of the Chinook (*O. tshawytscha*), and 5% of the sockeye salmon (*O. nerka*).
- Statewide, approximately 20% of the total exvessel value of the commercial CPH of salmon is attributed to the fisheries enhancement program. By species, this accounts for 54% of the chum, 46% of the pink, 22% of the coho, 12% of the Chinook, and 7% of sockeye salmon exvessel value.
- An estimated 303,297 hatchery-produced salmon were harvested among personal use, sport, and subsistence fisheries. Sport anglers harvested an estimated 390,654 hatchery-produced fish represented by 8 species: Chinook, coho, pink, chum, and sockeye salmon; rainbow trout (*O. mykiss*); Arctic char; and Arctic grayling.
- Hatchery-produced sockeye salmon are the greater part of the noncommercial CPF (sport, personal use, and subsistence), with an estimated 149,494 harvested statewide in 2014. Fisheries enhancement projects also provided a significant contribution of coho salmon to the noncommercial CPF, with an estimated 118,564 fish harvested in 2014. Hatchery-produced Chinook, pink, and chum salmon were also harvested in noncommercial CPF.
- In 2015, an estimated 62.8 million hatchery-produced fish are projected to return to Alaska.

REGIONAL CONTRIBUTION

The contribution of hatchery-produced salmon to Alaska fisheries in 2014 (Tables 5, 6, 12–16):

Southeast Alaska: Returning hatchery-produced salmon accounted for 12% of the salmon in the commercial CPH: 85% of the chum, 27% of the coho, 13% of the Chinook, 7% of the sockeye, and 1% of the pink salmon can be attributed to fisheries enhancement projects. The harvest of hatchery-produced salmon contributed an estimated \$38 million, or 26%, of the exvessel value of salmon in the commercial CPH. In Southeast Alaska, the majority of the noncommercial CPF contribution was coho salmon, with an estimated 65,455 fish harvested.

Prince William Sound: An estimated 45 million salmon returned from hatchery releases, accounting for an estimated 87% of the total number of salmon in the commercial CPH: 68% of

the chum, 93% of the pink, 45% of the sockeye, and 29% of the coho salmon in the commercial CPH were hatchery-produced fish. In addition, hatchery-produced salmon contributed an estimated \$64 million, or 62%, of the exvessel value of salmon in the commercial CPH. Sockeye salmon were the bulk of the noncommercial CPF harvest, with an estimated 118,220 fish harvested in the Prince William Sound area.

Cook Inlet: The fisheries enhancement program accounted for approximately 2% of the sockeye salmon and 6% of the pink salmon in the commercial CPH and contributed an estimated \$547,000, or 2%, of the exvessel value of salmon in the commercial CPH. Cook Inlet area noncommercial CPF harvest of 42,596 fish was dominated by sockeye salmon, with an estimate of 27,000 hatchery-produced fish harvested.

Kodiak: Hatcheries in the salmon fisheries enhancement program accounted for 41% of the total number of salmon in the commercial CPH: 51% of the pink salmon, 49% of the coho, 14% of the chum, and 9% of the sockeye in the commercial CPH were hatchery-produced fish. The fisheries enhancement program contributed an estimated \$10 million, or 22%, of the exvessel value of salmon in the commercial CPH. Of the 8,759 hatchery-produced salmon harvested in the noncommercial CPF, an estimated 5,150 were coho salmon.

REFERENCES CITED

- Alaska Legislature. 1974. An act authorizing the operation of private nonprofit salmon hatcheries. Section 1, Chapter 111, SLA 1974, in the Temporary and Special Acts.
- Munro, A., and J. Shriver. 2015. Run forecasts and harvest projections for 2015 Alaska salmon fisheries and review of the 2014 season. Alaska Department of Fish and Game, Special Publication No. 15-04, Anchorage.
- Vercessi, L. 2014. Alaska salmon enhancement program 2013 annual report. Alaska Department of Fish and Game, Fishery Management Report No. 14-12, Anchorage.

TABLES

Table 1.–List of hatchery acronyms used in this report.

Acronym	Organization
ADF&G	Alaska Department of Fish and Game
AKI	Armstrong-Keta, Inc.
CIAA	Cook Inlet Aquaculture Association
DIPAC	Douglas Island Pink and Chum, Inc.
KNFC	Kake Nonprofit Fisheries Corporation
KRAA	Kodiak Regional Aquaculture Association
MIC	Metlakatla Indian Community
NMFS	National Marine Fisheries Service
NSRAA	Northern Southeast Regional Aquaculture Association
POWHA	Prince of Wales Hatchery Association
PWSAC	Prince William Sound Aquaculture Corporation
SSSC	Sitka Sound Science Center
SSRAA	Southern Southeast Regional Aquaculture Association
VFDA	Valdez Fisheries Development Association

Table 2.—Estimated egg takes for Alaska hatcheries, by region, in millions, 2014.

Area	Chinook	Sockeye	Coho	Pink	Chum	Other	Total
Southeast	10.46	18.03	30.65	95.81	539.87	0.00	694.82
Prince William Sound	0.05	41.25	6.16	728.65	144.00	0.00	920.11
Cook Inlet	3.11	11.10	2.27	18.06	0.00	1.23	35.78
Arctic/Yukon/Kuskokwim	0.06	0.00	0.11	0.00	0.00	0.05	0.23
Kodiak	0.04	4.89	1.79	216.03	36.08	0.10	258.93
Total ^a	13.73	75.27	40.98	1,058.55	719.95	1.38	1,909.86

^a Some figures may not total exactly due to rounding.

Table 3.—Estimated juvenile releases from Alaska hatcheries, by region, in millions, 2014.

Area	Chinook	Sockeye	Coho	Pink	Chum	Other	Total
Southeast	7.01	13.22	22.91	100.31	477.75	0.00	621.20
Prince William Sound	0.03	33.46	2.72	672.94	151.50	0.00	860.64
Cook Inlet	1.97	9.37	1.28	51.30	0.00	0.96	64.88
Arctic/Yukon/Kuskokwim	0.02	0.00	0.07	0.00	0.00	0.31	0.40
Kodiak	0.27	4.17	1.19	191.50	21.91	0.02	219.06
Total ^a	9.29	60.22	28.16	1,016.05	651.16	1.29	1,766.18

^a Some figures may not total exactly due to rounding.

Table 4.—Estimated total returns attributed to Alaska hatcheries (including common property harvest, cost recovery harvest, broodstock, and escapement), by region, 2014.

Area	Chinook	Sockeye	Coho	Pink	Chum	Other	Total
Southeast	85,221	290,834	1,572,802	743,716	6,649,739	0	9,342,312
Prince William Sound	0	1,750,565	225,430	42,017,415	1,293,431	0	45,286,841
Cook Inlet	4,576	288,223	17,050	146,335	0	50,406	506,590
Arctic/Yukon/Kuskokwim	0	0	0	0	0	36,951	36,951
Kodiak	2,401	388,305	242,752	6,215,464	98,032	0	6,946,954
Total ^a	92,198	2,717,927	2,058,034	49,122,930	8,041,202	87,357	62,119,648

^a Some figures may not total exactly due to rounding.

Table 5.—Alaska (preliminary) commercial harvest of hatchery-produced fish, by region, in thousands of fish, 2014.

Area	Harvest	Chinook	Sockeye	Coho	Pink	Chum	Total
Southeast	Total commercial harvest ^a	423	1,558	3,674	37,092	6,501	49,247
	Hatchery cost-recovery harvest	11	122	489	186	1,278	2,086
	CCPH ^b	412	1,436	3,185	36,906	5,223	47,162
	Hatchery-produced fish in CCPH	55	95	868	326	4,456	5,799
	% of hatchery-produced fish in CCPH	13.3%	6.6%	27.2%	0.9%	85.3%	12.3%
Prince William Sound	Total commercial harvest	10	3,307	600	43,902	1,530	49,350
	Hatchery cost-recovery harvest	0	0	12	4,242	199	4,453
	CCPH	10	3,307	588	39,660	1,331	44,896
	Hatchery-produced fish in CCPH	0	1,494	169	36,680	904	39,246
	% of hatchery-produced fish in CCPH	0.0%	45.2%	28.7%	92.5%	67.9%	87.4%
Cook Inlet	Total commercial harvest	5	2,563	135	904	189	3,795
	Hatchery cost-recovery harvest	0	173	0	0	0	173
	CCPH ^b	5	2,390	135	904	189	3,623
	Hatchery-produced fish in CCPH	0	36	0	54	0	91
	% of hatchery-produced fish in CCPH	0.0%	1.5%	0.0%	6.0%	0.0%	2.5%
Kodiak	Total commercial harvest	9	3,257	474	10,678	337	14,755
	Hatchery cost-recovery harvest	0	78	0	676	0	754
	CCPH	9	3,179	474	10,002	337	14,001
	Hatchery-produced fish in CCPH	0	297	230	5,100	46	5,673
	% of hatchery-produced fish in CCPH	0.0%	9.3%	48.6%	51.0%	13.5%	40.5%
Chignik/Aleutian Islands/Alaska Peninsula	Total commercial harvest	18	3,989	527	1,190	685	6,409
	Hatchery-produced fish in CCPH	0	0	0	0	0	0
	% of hatchery-produced fish in CCPH	0.0%	0.0%	0.0%	0.0%	0.0%	0.0%
Bristol Bay	Total commercial harvest	13	28,810	266	1,302	557	30,948
	Hatchery-produced fish in CCPH	0	0	0	0	0	0
	% of hatchery-produced fish in CCPH	0.0%	0.0%	0.0%	0.0%	0.0%	0.0%
Arctic-Yukon-Kuskokwim	Total commercial harvest	2	82	429	236	1,422	2,173
	Hatchery-produced fish in CCPH	0	0	0	0	0	0
	% of hatchery-produced fish in CCPH	0.0%	0.0%	0.0%	0.0%	0.0%	0.0%
Statewide Total ^c	Total commercial harvest	480	43,566	6,105	95,304	11,221	156,676
	Hatchery cost-recovery harvest	11	373	501	5,105	1,476	7,466
	CCPH	469	43,193	5,604	90,199	9,745	149,210
	Hatchery-produced fish in CCPH	55	1,923	1,267	42,159	5,405	50,809
	% of hatchery-produced fish in CCPH	11.7%	4.5%	22.6%	46.7%	55.5%	34.1%

Source: Commercial harvest data, Alaska Department of Fish and Game website.

http://www.adfg.alaska.gov/static/fishing/PDFs/commercial/table_2014_commercial_salmon_harvest_values.pdf (Accessed February 12, 2015).

^a Total commercial harvest by all commercial gear types, including fish harvested for hatchery cost recovery.

^b CCPH = commercial common property harvest.

^c Some figures may not total exactly due to rounding.

Table 6.—Estimated exvessel value of the total Alaska commercial common property harvest (preliminary), by region, in thousands of dollars, 2014.

Area	Harvest ^a	Chinook	Sockeye	Coho	Pink	Chum	Total
Southeast	Value of total commercial harvest	\$21,856	\$15,813	\$33,727	\$36,350	\$37,862	\$145,608
	Value of hatchery-produced fish in CCPH ^b	\$2,833	\$969	\$7,966	\$319	\$25,950	\$38,037
	% value of hatchery-produced fish in CCPH	13.0%	6.1%	23.6%	0.9%	68.5%	26.1%
Prince William Sound	Value of total commercial harvest	\$1,116	\$44,951	\$5,340	\$45,559	\$7,449	\$104,415
	Value of hatchery-produced fish in CCPH	\$0	\$20,311	\$1,502	\$38,064	\$4,400	\$64,277
	% value of hatchery-produced fish in CCPH	0.0%	45.2%	28.1%	83.5%	59.1%	61.6%
Cook Inlet	Value of total commercial harvest	\$217	\$34,983	\$746	\$841	\$743	\$37,531
	Value of hatchery-produced fish in CCPH	\$0	\$497	\$0	\$51	\$0	\$547
	% value of hatchery-produced fish in CCPH	0.0%	1.4%	0.0%	6.0%	0.0%	1.5%
Kodiak	Value of total commercial harvest	\$92	\$30,148	\$2,405	\$12,204	\$1,216	\$46,065
	Value of hatchery-produced fish in CCPH	\$0	\$2,750	\$1,169	\$5,828	\$164	\$9,912
	% value of hatchery-produced fish in CCPH	0.0%	9.1%	48.6%	47.8%	13.5%	21.5%
Chignik/Aleutian Islands/ Alaska Peninsula	Value of total commercial harvest	\$159	\$31,962	\$1,829	\$939	\$1,943	\$36,831
	Value of hatchery-produced fish in CCPH	\$0	\$0	\$0	\$0	\$0	\$0
	% value of hatchery-produced fish in CCPH	0.0%	0.0%	0.0%	0.0%	0.0%	0.0%
Bristol Bay	Value of total commercial harvest	\$155	\$193,603	\$1,435	\$1,276	\$1,036	\$197,505
	Value of hatchery-produced fish in CCPH	\$0	\$0	\$0	\$0	\$0	\$0
	% value of hatchery-produced fish in CCPH	0.0%	0.0%	0.0%	0.0%	0.0%	0.0%
Arctic-Yukon-Kuskokwim	Value of total commercial harvest	\$22	\$638	\$3,386	\$172	\$5,829	\$10,047
	Value of hatchery-produced fish in CCPH	\$0	\$0	\$0	\$0	\$0	\$0
	% value of hatchery-produced fish in CCPH	0.0%	0.0%	0.0%	0.0%	0.0%	0.0%
Total ^c	Value of total commercial harvest	\$23,617	\$352,098	\$48,869	\$97,340	\$56,078	\$578,003
	Value of hatchery-produced fish in CCPH	\$2,833	\$24,526	\$10,637	\$44,262	\$30,515	\$112,773
	% value of hatchery-produced fish in CCPH	12.0%	7.0%	21.8%	45.5%	54.4%	19.5%

Sources: Commercial harvest data and estimated exvessel values, Alaska Department of Fish and Game website

http://www.adfg.alaska.gov/static/fishing/PDFs/commercial/table_2014_commercial_salmon_harvest_values.pdf (Accessed February 12, 2015).

^a Total commercial harvest by all commercial gear types, including fish harvested for hatchery cost recovery.

^b CCPH = Commercial common property harvest.

^c Some figures may not total exactly due to rounding.

Table 7.–Alaska commercial salmon fishery harvest average weights and prices (preliminary), 2014.

Area	Species	Harvest Average	
		Weight (lb)	Price/lb
Southeast			
	Chinook	12.10	\$4.27
	Sockeye	5.80	\$1.75
	Coho	6.80	\$1.35
	Pink	3.50	\$0.28
	Chum	9.10	\$0.64
Prince William Sound			
	Chinook	17.69	\$6.31
	Sockeye	5.93	\$2.29
	Coho	8.08	\$1.10
	Pink	3.37	\$0.31
	Chum	7.62	\$0.64
Cook Inlet			
	Chinook	15.35	\$2.84
	Sockeye	6.06	\$2.25
	Coho	6.14	\$0.90
	Pink	3.60	\$0.26
	Chum	7.40	\$0.53
Kodiak			
	Chinook	7.30	\$1.44
	Sockeye	5.22	\$1.78
	Coho	7.74	\$0.66
	Pink	3.51	\$0.33
	Chum	7.59	\$0.48
Chignik/Aleutian Islands/Alaska Peninsula			
	Chinook	9.51	\$0.96
	Sockeye	6.16	\$1.37
	Coho	7.42	\$0.45
	Pink	3.29	\$0.24
	Chum	7.56	\$0.39
Bristol Bay			
	Chinook	14.90	\$0.80
	Sockeye	5.60	\$1.20
	Coho	6.00	\$0.90
	Pink	3.50	\$0.28
	Chum	6.20	\$0.30
Arctic-Yukon-Kuskokwim			
	Chinook	10.50	\$1.00
	Sockeye	6.24	\$0.94
	Coho	7.01	\$1.18
	Pink	3.11	\$0.29
	Chum	7.19	\$0.59

Source: Alaska Department of Fish and Game website,
http://www.adfg.alaska.gov/static/fishing/PDFs/commercial/table_2014_commercial_salmon_harvest_values.pdf (Accessed February 12, 2015).

Table 8.—Eggs collected at Alaska hatcheries, in millions, 2014 (transferred eggs are listed with the receiving hatchery).

Region/Area/Operator/Hatchery		Chinook	Sockeye	Coho	Pink	Chum	Other	Total
Southeast								
Southern Southeast								
SSRAA	Burnett Inlet			3.08		23.50		26.58
	Crystal Lake	0.53		0.19				0.71
	Neets Bay			3.91		97.99		101.90
	Whitman Lake	3.21		4.50		42.00		49.71
POWHA	Klawock River			5.03				5.03
	Port Saint Nicholas	0.32						0.32
Southern Southeast Total		4.06	0.00	16.7	0.00	163.49	0.00	184.25
Northern Southeast								
NSRAA	Haines Projects					3.07		3.07
	Hidden Falls	0.92		7.70		121.32		129.94
	Medvejie Creek	3.88		0.94	0.30	76.97		82.08
	Sawmill Creek			0.83		15.04		15.87
AKI	Port Armstrong	0.29		2.59	92.21	24.77		119.87
DIPAC	Macaulay	0.98		1.61		123.16		125.75
	Snettisham		18.03					18.03
NMFS	Little Port Walter	0.33						0.33
SSSC	Sheldon Jackson			0.28	3.30	12.06		15.63
Northern Southeast Total		6.40	18.03	13.95	95.81	376.38	0.00	510.57
Southeast Total		10.46	18.03	30.65	95.81	539.87	0.00	694.82
Southcentral								
Prince William Sound								
PWSAC	Armin F Koernig				162.00	31.00		193.00
	Cannery Creek				187.00			187.00
	Gulkana		29.65					29.65
	Main Bay		11.60					11.60
	Wally Noerenberg	0.05		4.00	148.00	113.00		265.05
VFDA	Solomon Gulch			2.16	231.65			233.80
	Prince William Sound Total	0.05	41.25	6.16	728.65	144.00	0.00	920.11
Cook Inlet								
CIAA	Port Graham				3.20			3.20
	Trail Lakes		11.10	0.58				11.68
	Tutka Bay Lagoon				14.86			14.86
ADF&G	WJ Hernandez	3.11		1.69			1.23	6.04
Cook Inlet Total		3.11	11.10	2.27	18.06	0.00	1.23	35.78
Southcentral Total		3.17	52.35	8.43	746.71	144.00	1.23	955.89
Arctic-Yukon-Kuskokwim								
ADF&G	Ruth Burnett	0.06		0.11			0.05	0.23
Arctic-Yukon-Kuskokwim Total		0.06	0.00	0.11	0.00	0.00	0.05	0.23
Kodiak/Westward								
Kodiak								
KRAA	Kitoi Bay		0.83	1.53	216.03	36.08		254.47
	Pillar Creek	0.04	4.05	0.26			0.10	4.45
Kodiak/Westward Total		0.04	4.89	1.79	216.03	36.08	0.10	258.93
Statewide Total		13.73	75.27	40.98	1,058.55	719.95	1.38	1,909.86

Note: Some figures may not total exactly due to rounding.

Table 9.—Alaska hatcheries releases, in millions of fish, as reported by operators, 2014.

Region/Area/Operator/Hatchery			Site	Chinook	Sockeye	Coho	Pink	Chum	Other	Total
Southeast										
Southern Southeast										
SSRAA	Burnett Inlet	Burnett Inlet				0.23		4.91		5.14
		Anita Bay				0.28		22.66		22.94
		Neck Lake				1.80				1.80
	Crystal Lake	Crystal Creek		0.65		0.18				0.83
					0.19					0.19
		Anita Bay		0.55						0.55
	Neets Bay	Neets Bay		1.03		4.24		79.03		84.30
	Whitman Lake	Whitman Lake		0.54		0.32				0.86
		Anita Bay				0.31				0.31
		Kendrick Bay						29.56		29.56
		Nakat Inlet				0.60		8.14		8.74
POWHA	Klawock River	Klawock River				4.28				4.28
	Port St Nicholas	Port St Nicholas		0.25						0.25
		Coffman Cove		0.07						0.07
Southern Southeast Total				3.28	0.00	12.24	0.00	144.30	0.00	159.82
Northern Southeast										
NSRAA	Haines Projects	Haines Projects						3.40		3.40
	Hidden Falls	Takatz Bay						42.45		42.45
		Kasnyku Bay		0.56		3.12		32.37		36.04
		Southeast Cove						9.14		9.14
		Banner Lake				0.10				0.10
		Mist Cove				2.42				2.42
	Medvejie Creek	Bear Cove		1.78		0.07	0.30	18.78		20.93
		Deep Inlet						43.47		43.47
		Halibut Point Marine		0.38						0.38
	Sawmill Creek	Deep Inlet				0.30				0.30
AKI	Port Armstrong	Port Armstrong		0.16		2.47	79.66	25.03		107.32
DIPAC	Macaulay	Macaulay		0.26		0.34		11.58		12.18
		Amalga Harbor					42.39		42.39	
		Auke Bay		0.07						0.07
		Boat Harbor						22.89		22.89
		Dredge/Twin Lakes		0.01						0.01
		Fish Creek		0.21						0.21
		Lena Cove		0.09						0.09
		Limestone						14.92		14.92
		Sheep Creek				0.84		23.86		24.69
	Snettisham	Snettisham			8.88					8.88
		Sweetheart Lake			0.49					0.49
		Tahltan/Tuya Lakes			2.53					2.53
		Tatsamenie Lake			1.32					1.32
KNFC	Gunnuk Creek	Gunnuk Creek				1.01	17.39	10.00		28.40
		Southeast Cove						21.47		21.47
NMFS	Little Port Walter	Little Port Walter		0.21						0.21
SSSC	Sheldon Jackson	Crescent Bay				0.00	2.97	2.95		5.92
		Deep Inlet						8.77		8.77
Northern Southeast Total				3.73	13.22	10.67	100.31	333.45	0.00	461.38
Southeast Total				7.01	13.22	22.91	100.31	477.75	0.00	621.20

-continued-

Table 9.–Page 2 of 2.

Region/Area/Operator/Hatchery			Site	Chinook	Sockeye	Coho	Pink	Chum	Other	Total	
Southcentral											
Prince William Sound											
PWSAC	Armin F Koernig Cannery Creek Gulkana I and II Main Bay Wally Noerenberg	Sawmill Bay					154.00	31.60		185.60	
		Unakwik Inlet					171.00			171.00	
		Gulkana		22.00						22.00	
		Main Bay		11.46						11.46	
		Lake Bay			0.76	128.00	76.30		205.06		
		Port Chalmers					43.60		43.60		
		Chenega Bay	0.03		0.05				0.08		
		Cordova Sites			0.05				0.05		
		Whittier Sites			0.05				0.05		
		VFDA	Solomon Gulch	Solomon Gulch			1.79	219.94			221.73
Boulder Bay					0.02				0.02		
Prince William Sound Total				0.03	33.46	2.72	672.94	151.50	0.00	860.64	
Cook Inlet											
CIAA	Trail Lakes	Bear Lake/ResBay		2.55	0.41					2.95	
		English Bay Lake		1.45						1.45	
		Lower Cook Inlet									
		Lakes		0.86						0.86	
		Hidden Lake		1.80						1.80	
		Shell Lake		0.10						0.10	
		Tutka Lagoon		0.51						0.51	
		Tutka Bay Lagoon	Tutka Bay				51.11		51.11		
			Point Graham				0.19		0.19		
		ADF&G	WJ Hernandez	Bird Creek			0.09				0.09
				Campbell Creek			0.03				0.03
				Cordova, Fleming	0.09						0.09
				Crooked Creek	0.14						0.14
Deception Creek	0.21								0.21		
Eklutna Tailrace	0.40				0.08				0.48		
Halibut Cove	0.09								0.09		
Homer Spit	0.21				0.08				0.29		
Ninilchik River	0.05								0.05		
Seldovia Harbor	0.07								0.07		
Seward Lagoon	0.18		0.10				0.28				
Ship Creek	0.36		0.23				0.59				
Whittier	0.09						0.09				
Lakes	0.08		0.15			0.96	1.19				
Cook Inlet Total				1.97	9.37	1.28	51.30	0.00	0.96	64.88	
Southcentral Total				2.00	42.83	4.00	724.24	151.50	0.96	925.52	
Arctic-Yukon-Kuskokwim											
ADF&G	Ruth Burnett		0.02		0.07				0.31	0.40	
Arctic-Yukon-Kuskokwim Total				0.02		0.07			0.31	0.40	
Kodiak											
KRAA	Kitoi Bay	Kitoi Bay		0.71	1.05	191.50	21.91			215.17	
		Lakes			0.03					0.03	
	Pillar Creek	Spiridon Lake		2.20						2.20	
		Telrod Cove		0.61						0.61	
		Anton Larsen Bay		0.14						0.14	
		Ouzinkie		0.10						0.10	
		Lakes		0.42	0.11			0.02	0.54		
		Other	0.27						0.27		
Kodiak/Westward Total				0.27	4.17	1.19	191.50	21.91	0.02	219.06	
Statewide Total				9.29	60.22	28.16	1,016.05	651.16	1.29	1,766.18	

Note: Some figures may not total exactly due to rounding.

Table 10.—Estimated returns to Alaska fisheries enhancement projects (including common property harvests), by species, 2014.

Region/Area/Operator/Hatchery		Chinook	Sockeye	Coho	Pink	Chum	Other	Total
Southeast								
Southern Southeast								
SSRAA	Burnett Inlet			194,510		53,741		248,251
	Crystal Lake	22,710		2,973				25,683
	Neets Bay	23,213		418,208		1,516,142		1,957,563
	Whitman Lake	10,630		85,242		700,911		796,783
KTHC	Deer Mountain	117		2,946				3,063
POWHA	Klawock River			207,173				207,173
	Port St Nicholas	1,317						1,317
Southern Southeast Total		57,987	0	911,052	0	2,270,794	0	3,239,833
Northern Southeast								
NSRAA	Haines Projects					31,037		31,037
	Hidden Falls	2,058		318,846		470,346		791,250
	Medvejie Creek	17,097		5,673	3,177	913,441		939,388
	Sawmill Creek			12,466				12,466
AKI	Port Armstrong	1,644		254,256	403,843	72,514		732,257
DIPAC	Macaulay	4,452		24,668		2,499,908		2,529,028
	Snettisham		290,834					290,834
FED	Little Port Walter	1,822						1,822
KNFC	Gunnuk Creek			35,740	232,697	245,178		513,615
SSSC	Sheldon Jackson	161		10,101	103,999	146,521		260,782
Northern Southeast Total		27,234	290,834	661,750	743,716	4,378,945	0	6,102,479
Southeast Total		85,221	290,834	1,572,802	743,716	6,649,739	0	9,342,312
Southcentral								
Prince William Sound								
PWSAC	AF Koernig				4,410,954	82,154		4,493,108
	Cannery Creek				4,672,771			4,672,771
	Gulkana I and II		468,884					468,884
	Main Bay		1,281,681					1,281,681
	Wally Noerenberg			202,178	7,523,948	1,211,277		8,937,403
VFDA	Solomon Gulch			23,252	25,409,742			25,432,994
Prince William Sound Total		0	1,750,565	225,430	42,017,415	1,293,431	0	45,286,841
Cook Inlet								
CIAA	Trail Lakes		288,223	7,172				295,395
	Tutka Bay Lagoon				146,335			146,335
ADF&G	WJ Hernandez	4,576		9,878			50,406	64,860
Cook Inlet Total		4,576	288,223	17,050	146,335	0	50,406	506,590
Southcentral Total		4,576	2,038,788	242,480	42,163,750	1,293,431	50,406	45,793,431
Arctic/Yukon/Kuskokwim								
ADF&G	Ruth Burnett						36,951	36,951
Arctic/Yukon/Kuskokwim Total							36,951	36,951
Kodiak/Westward								
Kodiak								
KRAA	Kitoy Bay		103,754	237,802	6,215,464	98,032		6,655,052
	Pillar Creek	2,401	284,551	4,950				291,902
Kodiak/Westward Total		2,401	388,305	242,752	6,215,464	98,032	0	6,946,954
Statewide Total		92,198	2,717,927	2,058,034	49,122,930	8,041,202	87,357	62,119,648

Note: Some figures may not total exactly due to rounding.

Table 11.—Projected adult returns, by species, to Alaska fisheries enhancement projects in 2015.

Region/Area/Operator/Hatchery/Location		Chinook	Sockeye	Coho	Pink	Chum	Other	Total
Southern Southeast								
SSRAA	Burnett Inlet (BI)			23,000				23,000
	Neck Lake			90,000				90,000
	Crystal Lake (CL)	4,800		5,000				9,800
	Neets Bay (NB)	21,500		340,000		1,390,000		1,751,500
	Whitman Lake (WL)	12,000		26,000				38,000
	Kendrick Bay					745,000		745,000
	BI-CL-NB-WL							
	Anita Bay	15,000		47,000		420,000		482,000
	NB-WL							
	Nakat Inlet			48,000		295,000		343,000
KTHC	Deer Mountain	a		a				a
POWHA	Klawock River			214,112				214,112
	Port Saint Nicholas	3,666						3,666
	Coffman Cove	5,018						5,018
MIC	Tamgas Creek	a		a		a		a
Southern Southeast Total		61,984	0	793,112	0	2,850,000	0	3,705,096
Northern Southeast								
NSRAA	Haines Projects					34,000		34,000
	Hidden Falls	5,400		187,000		1,031,000		1,223,400
	Mist Cove			145,000				145,000
	Medvejie Creek	29,143		4,000		1,177,000		1,210,143
	Sawmill Creek			18,000				18,000
AKI	Port Armstrong	3,006		246,651	1,293,714	541,206		2,084,577
DIPAC	Macaulay	6,900		72,000		629,000		707,900
	Amalga Harbor					1,030,000		1,030,000
	Boat Harbor					324,000		324,000
	Limestone Inlet					126,000		126,000
	Pullen Creek/Lutak	300						300
	Snettisham		214,000					214,000
	Stikine River		a					a
	Sweetheart Lake		3,500					3,500
	Taku River		a					a
KNFC	Gunnuk Creek			a	a	a		a
	Southeast Cove					a		a
SSSC	Sheldon Jackson	126		112	68,347	170,160		238,745
NMFS	Little Port Walter	1,486						1,486
Northern Southeast Total		46,361	217,500	672,763	1,362,061	5,062,366	0	7,361,051
Southeast Total		108,345	217,500	1,465,875	1,362,061	7,912,366	0	11,066,147
Prince William Sound								
PWSAC	Armin F. Koernig				6,900,000	462,000		7,362,000
	Cannery Creek				7,700,000			7,700,000
	Gulkana I and II		418,200					418,200
	Main Bay		1,570,000					1,570,000
	Wally Noerenberg			53,000	5,700,000	1,733,000		7,486,000
	Chenega			4,000				4,000
	Cordova			4,000				4,000
	Port Chalmers					423,000		423,000
	Whittier			4,000				4,000
VFDA	Solomon Gulch			104,738	15,716,665			15,821,403
	Boulder Bay			1,169				1,169
Prince William Sound Totals		0	1,988,200	170,907	36,016,665	2,618,000	0	40,793,772

-continued-

Table 11.–Page 2 of 2.

Region/Area/Operator/Hatchery/Location		Chinook	Sockeye	Coho	Pink	Chum	Other	Total
Cook Inlet								
CIAA	Trail Lakes							
	Bear Lake		322,737	10,094				332,831
	English Bay Lakes		6,786					6,786
	Hazel/Leisure		32,352					32,352
	Hidden Lake		35,682					35,682
	Kirschner Lake		42,663					42,663
	Tutka Bay		48,160					48,160
	Tutka Bay Lagoon				1,533,000			1,533,000
	Port Graham Bay				2,820			2,820
ADF&G	WJ Hernandez	5,879		34,705			47,145	87,729
	Eklutna Tailrace	1,603		8,176				9,779
	Lower Cook Inlet	4,276		7,654				11,930
	Resurrection Bay	2,197		9,768				11,965
	Prince William Sound	3,021						3,021
Cook Inlet Totals		16,976	488,380	70,397	1,535,820	0	47,145	2,158,718
Southcentral Total		16,976	2,476,580	241,304	37,552,485	2,618,000	47,145	42,952,490
Arctic-Yukon-Kuskokwim								
ADF&G	Ruth Burnett						121,369	121,369
Arctic-Yukon-Kuskokwim Total		0	0	0	0	0	121,369	121,369
Kodiak								
KRAA	Kitoy Bay		92,265	166,788	7,790,266	211,481		8,260,800
	Pillar Creek	2,106		1,600				3,706
	Crescent Lake		6,700					6,700
	Hidden Lake		350					350
	Spiridon Lake		232,000					232,000
	Telrod Cove		64,000					64,000
	Anton Larsen Bay		45,000					45,000
	Ouizinkie Village		8,500					8,500
Westward/Kodiak Total		2,106	448,815	168,388	7,790,266	211,481	0	8,621,056
Statewide Total		127,427	3,142,895	1,875,567	46,704,812	10,741,847	168,514	62,761,062

^a Not available in time for publication.

Table 12.—Details of the estimated Chinook salmon returns to Alaska fisheries enhancement projects, as reported by operators, 2014.

Region/Area/Operator/Hatchery		Project	Common Property Harvest				Broodstock	Cost Recovery	Other	Total Return
			Seine	Gillnet	Troll	Sport/Personal Use/Subsistence				
Southeast										
Southern Southeast										
SSRAA	Crystal Lake	Crystal Lake	a	496	1,113	120	2,011	a	262	4,002
		Anita Bay	2,969	13,149	2,422	168	a	a	a	18,708
	Neets Bay	Neets Bay	7,046	3,612	5,658	789	a	5,508	600	23,213
	Whitman Lake	Whitman Lake	55	250	2,975	1,630	1,887	2,518	1,315	10,630
KTHC	Deer Mountain	Deer Mountain	a	13	104	a	a	a	a	117
POWHA	Port St Nicholas	Port St Nicholas	10	36	349	36	a	323	6	760
		Coffman Cove	4	310	130	9	a	102	2	557
Southern Southeast Total			10,084	17,866	12,751	2,752	3,898	8,451	2,185	57,987
Northern Southeast										
NSRAA	Hidden Falls	Hidden Falls	415	231	521	66	568	a	245	2,046
		Lutak Inlet	a	12	a	a	a	a	a	12
	Medvejie Creek	Medvejie Creek	1,471	3,308	5,636	1,003	2,957	2,332	390	17,097
AKI	Port Armstrong	Port Armstrong	2	7	356	168	524	468	119	1,644
DIPAC	Macaulay	Macaulay	a	913	154	1,754	983	19	359	4,182
		Lutak Inlet	a	33	a	a	a	a	a	33
	Skagway site		a	97	66	42	a	a	32	237
FED	Little Port Walter	L Port Walter	47	64	645	29	972	a	65	1,822
SSSC	Sheldon Jackson	Sheldon Jackson	70	a	78	11	a	a	2	161
Northern Southeast Total			2,005	4,665	7,456	3,073	6,004	2,819	1,212	27,234
Southeast Total			12,089	22,531	20,207	5,825	9,902	11,270	3,397	85,221
Southcentral										
Cook Inlet										
ADF&G	WJ Hernandez	Crooked Cr	a	a	a	a	164	a	737	901
		Deception Cr	a	a	a	a	82	a	261	343
		Eklutna Tailrace	a	a	a	217	a	a	a	217
		Ninilchik R	a	a	a	a	1,026	a	92	1,118
		Ship Creek	a	a	a	720	854	a	423	1,997
Cook Inlet Total			0	0	0	937	2,126	0	1,513	4,576
Southcentral Total			0	0	0	937	2,126	0	1,513	4,576
Kodiak/Westward										
Kodiak										
KRAA	Pillar Creek	Kodiak Rd System Lks	a	a	a	2,375	26	a	a	2,401
Kodiak Total			a	a	a	2,375	26	a	a	2,401
Kodiak/Westward Total			0	0	0	2,375	26	0	0	2,401
Statewide Total			12,089	22,531	20,207	9,137	12,054	11,270	4,910	92,198

Table 13.—Details of the estimated sockeye salmon returns to Alaska fisheries enhancement projects, as reported by operators, 2014.

Region/Area/Operator/Hatchery		Project	Common Property Harvest				Broodstock	Cost Recovery	Other	Total Return
			Seine	Gillnet	Troll	Sport/Personal Use/Subsistence				
Southeast										
Northern Southeast										
DIPAC	Snettisham	Snettisham		81,218		a				213,244
		Sweetheart Lake	26	2,075		3,000	a	a	a	5,101
		Stikine River	a	9,987		a	a	a		70,165
		Taku River	26	859		40	a	a		2,324
Northern Southeast Total			1,293	94,139	0	3,040	6,656	122,305	63,401	290,834
Southeast Total			1,293	94,139	0	3,040	6,656	122,305	63,401	290,834
Southcentral										
Prince William Sound										
PWSAC	Gulkana I and II							a		468,884
	Main Bay	Main Bay				1,000		a		1,281,68
Prince William Sound Total			111,078	1,383,206	0	118,220	28,885	0	109,176	1,750,56
Cook Inlet										
CIAA	Trail Lakes	Bear Lake		a						166,123
		English Bay Lake	42	a		a		a		8,037
		Hidden Lake	a	a		a		a		23,866
		Kirschner Lake		a		a	a	16,555	a	20,163
		Leisure/Hazel	a	a		a	a	a	a	0
		Tutka Bay		15,198		7,000		30,404		70,034
Cook Inlet Total			21,183	15,198	0	27,000	10,381	172,930	41,531	288,223
										2,038,78
Southcentral Total			132,261	1,398,404	0	145,220	39,266	172,930	150,707	8
Kodiak/Westward										
Kodiak										
KRAA	Kitoi Bay	Kitoi Bay		a		234		14,234		103,754
	Pillar Creek	Foul Bay		a		a	a	a	a	12,363
		Settler's Cove	a	a		a	a	a	a	0
		Spiridon Lake				1,000	a	63,299		269,918
		Waterfall Bay		a		a	a	a	a	2,270
Kodiak Total			172,830	124,208	0	1,234	935	77,533	11,565	388,305
Kodiak/Westward Total			172,830	124,208	0	1,234	935	77,533	11,565	388,305
										2,717,92
Statewide Total			306,384	1,616,751	0	149,494	46,857	372,768	225,673	7

^a Not applicable.

Table 14.—Details of the estimated coho salmon returns to Alaska fisheries enhancement projects, as reported by operators, 2014.

Region/Area/Operator/Hatchery		Project	Common Property Harvest				Broodstock	Cost Recovery	Other	Total Return
			Seine	Gillnet	Troll	Sport/Personal Use/Subsistence				
Southeast										
Southern Southeast										
SSRAA	Burnett Inlet	Burnett Inlet	1,315	7,405	3,060	2,130	3,260	14,100	2,500	33,770
		Neck Lake	3,605	46,495	11,220	30,420	^a	69,000	^a	160,740
	Crystal Lake	62	343	983	^a	1,585	^a	^a	2,973	
	Neets Bay	52,754	89,955	197,474	15,560	23,538	36,800	2,127	418,208	
	Whitman Lake	Whitman Lake	4,975	2,140	12,025	2,607	5,401	4,480	99	31,727
		Anita Bay	2,970	13,150	2,420	^a	^a	^a	100	18,640
		Nakat Inlet	1,115	22,770	10,775	215	^a	^a	^a	34,875
KTHC	Deer Mountain	Deer Mountain	1,420	519	523	197	^a	^a	287	2,946
POWHA	Klawock River	Klawock Lake	27,161	91	98,246	3,394	3,570	61,393	13,318	207,173
Southern Southeast Total			95,377	182,868	336,726	54,523	37,354	185,773	18,431	911,052
Northern Southeast										
NSRAA	Hidden Falls	Hidden Falls	244	192	23,707	545	14,884	37,862	4,540	81,974
		Deer Lake	353	193	98,304	5,601	^a	122,011	10,410	236,872
	Medvejie Creek	Medvejie Creek	176	76	3,508	269	1,091	56	497	5,673
	Sawmill Creek	Deep Inlet	1,630	420	9,573	609	^a	8	226	12,466
AKI	Port Armstrong	Port Armstrong	119	47	91,810	382	8,330	131,068	22,500	254,256
DIPAC	Macaulay	Macaulay	^a	4,945	4,295	3,125	^a	11,924	379	24,668
KNFC	Gunnuk Creek	Gunnuk Creek	^a	^a	4,496	^a	^a	^a	31,244	35,740
SSSC	Sheldon Jackson	Sheldon Jackson	192	37	8,458	401	512	222	279	10,101
Northern Southeast Total			2,714	5,910	244,151	10,932	24,817	303,151	70,075	661,750
Southeast Total			98,091	188,778	580,877	65,455	62,171	488,924	88,506	1,572,802
Southcentral										
Prince William Sound										
PWSAC	Wally Noerenberg	Lake Bay	24,991	143,426	^a	500	6,584	10,877	^a	186,378
		Chenega	^a	^a	^a	3,200	^a	^a	^a	3,200
		Cordova	^a	^a	^a	6,300	^a	^a	^a	6,300
		Whittier	^a	^a	^a	6,300	^a	^a	^a	6,300
VFDA	Solomon Gulch	Solomon Gulch	309	^a	^a	20,000	1,404	1,139	400	23,252
Prince William Sound Total			25,300	143,426	0	36,300	7,988	12,016	400	225,430

-continued-

Table 14.–Page 2 of 2.

		Common Property Harvest								
Region/Area/Operator/Hatchery	Project	Seine	Gillnet	Troll	Sport/Personal Use/Subsistence	Broodstock	Cost Recovery	Other	Total Return	
Cook Inlet										
CIAA	Trail Lakes	Bear Lake	a	a	a	5,400	383	a	1,389	7,172
ADF&G	WJ Hernandez	Bird Creek	a	a	a	1,459	a	a	630	2,089
		Eklutna Tailrace	a	a	a	2,653	a	a	a	2,653
		Ship Creek	a	a	a	2,147	1,660	a	1,329	5,136
Cook Inlet Total		0	0	0	11,659	2,043	0	3,348	17,050	
Southcentral Total		25,300	143,426	0	47,959	10,031	12,016	3,748	242,480	
Kodiak/Westward										
Kodiak										
KRAA	Kitoi Bay	Kitoi Bay	230,401	a	a	200	7,012	189	a	237,802
	Pillar Creek	Kodiak Road System Lakes		a	a	4,950	a	a	a	4,950
Kodiak/Westward Total		230,401	0	0	5,150	7,012	189	0	242,752	
Statewide Total		353,792	332,204	580,877	118,564	79,214	501,129	92,254	2,058,034	

^a Not applicable.

Table 15.—Details of the estimated pink salmon returns to Alaska fisheries enhancement projects, as reported by operators, 2014.

		Common Property Harvest							
Region/Area/Operator/Hatchery	Project	Seine	Gillnet	Troll	Sport/Personal Use/Subsistence	Broodstock	Cost Recovery	Other	Total Return
Southeast									
Northern Southeast									
NSRAA	Medvejie Creek	a	a	a	a	1,901	476	800	3,177
AKI	Port Armstrong	92,884	a	a	a	126,251	124,708	60,000	403,843
KNFC	Gunnuk Creek	186,158	a	46,539	a	a	a	a	232,697
SSSC	Sheldon Jackson	a	a	a	a	5,485	60,919	37,595	103,999
Northern Southeast Total		279,042	0	46,539	0	133,637	186,103	98,395	743,716
Southeast Total		279,042	0	46,539	0	133,637	186,103	98,395	743,716
Southcentral									
Prince William Sound									
PWSAC	Armin F Koernig	3,397,697	72,274	a	a	187,665	741,318	12,000	4,410,954
	Cannery Creek	4,080,846	182,838	a	a	337,152	66,935	5,000	4,672,771
	Wally Noerenberg	4,677,614	751,046	a	a	253,381	1,840,907	1,000	7,523,948
VFDA	Solomon Gulch	23,517,189	a	a	18,602	237,447	1,592,943	43,561	25,409,742
Prince William Sound Total		35,673,346	1,006,158	0	18,602	1,015,645	4,242,103	61,561	42,017,415
Cook Inlet									
CIAA	Tutka Bay Lagoon	11,004	a	a	3,000	22,401	32	32,421	68,858
	Halibut Cove	43,442	a	a	a	1,740	a	32,295	77,477
Cook Inlet Total		54,446	0	0	3,000	24,141	32	64,716	146,335
Southcentral Total		35,727,792	1,006,158	0	21,602	1,039,786	4,242,135	126,277	42,163,750
Kodiak/Westward									
Kodiak									
KRAA	Kitoi Bay	5,099,604	a	a	a	279,404	676,456	160,000	6,215,464
Kodiak/Westward Total		5,099,604	a	a	a	279,404	676,456	160,000	6,215,464
Statewide Total		41,106,438	1,006,158	46,539	21,602	1,452,827	5,104,694	384,672	49,122,930

^a Not applicable.

Table 16.—Details of the estimated chum salmon returns to Alaska fisheries enhancement projects, as reported by operators, 2014.

			Common Property Harvest				Broodstock	Cost Recovery	Other	Total Return
Region/Area/Operator/Hatchery	Project		Seine	Gillnet	Troll	Sport/Personal Use/Subsistence				
Southeast										
Southern Southeast										
SSRAA	BI/NB/WL	Anita Bay	137,112	130,589	2,116	a	a	a	2,453	272,270
	NB/WL	Nakat Inlet	13,820	187,117	a	a	a	a	7,544	208,481
	Neets Bay	Neets Bay	247,083	85,981	146,243	a	226,500	577,551	33,346	1,316,704
	Whitman Lake	Kendrick Bay	438,405	15,240	810	a	a	a	18,884	473,339
Southern Southeast Total			836,420	418,927	149,169	a	226,5000	577,551	62,227	2,270,794
Northern Southeast										
NSRAA	Haines Projects	Haines	a	12,415	a	a	2,896	a	15,726	31,037
	Hidden Falls	Hidden Falls	252,003	a	4	a	128,448	54,301	35,590	470,346
	Medvejie Creek	Medvejie Creek	542,900	240,233	14,443	a	95,772	16,010	4,083	913,441
AKI	Port Armstrong	Port Armstrong	1,450	a	5,801	a	24,942	30,821	9,500	72,514
DIPAC	Macaulay	Gastineau Channel	4,789	290,873	3,263	3,500	153,090	72,373	8,000	535,888
		Amalga Harbor	237,402	452,660	7,245	a	a	492,783	a	1,190,090
		Boat Harbor	6,072	669,305	4,137	a	a	a	a	679,514
		Limestone Inlet	844	92,997	575	a	a	a	a	94,416
KNFC	Gunnuk Creek	Gunnuk Creek	23,094	a	7,698	a	a	a	46,189	76,981
		Southeast Cove	41,394	a	13,798	a	a	30,217	82,788	168,197
SSSC	Sheldon Jackson	Sheldon Jackson	a	a	a	a	1,282	1,113	a	2,395
		Deep Inlet	85,661	37,905	2,279	a	15,111	2,526	644	144,126
Northern Southeast Total			1,195,609	1,796,388	59,243	3,500	421,541	700,144	202,520	4,378,945
Southeast Total			2,032,029	2,215,315	208,412	3,500	648,041	1,277,695	264,747	6,649,739
Southcentral										
Prince William Sound										
PWSAC	Armin F Koernig	Armin F Koernig	72,970	9,184	a	a	a	a	a	82,154
	Wally Noerenberg	Lake Bay	25,599	602,906	a	1,000	179,818	198,753	10,000	1,018,076
		Port Chalmers	152,782	40,419	a	a	a	a	a	193,201
Prince William Sound Total			251,351	652,509	0	1,000	179,818	198,753	10,000	1,293,431
Southcentral Total			251,351	652,509	0	1,000	179,818	198,753	10,000	1,293,431
Kodiak/Westward										
Kodiak										
KRAA	Kitoi Bay	Kitoi Bay	45,582	a	a	a	49,450	a	3,000	98,032
Kodiak/Westward Total			45,582	0	0	0	49,450	0	3,000	98,032
Statewide Total			2,328,962	2,867,824	208,412	4,500	877,309	1,476,448	277,747	8,041,202

^a Not applicable.

Table 17.—Details of the estimated “other” hatchery-produced returns to Alaska fisheries enhancement projects, as reported by operators, 2014.

						Common Property Harvest			
						Personal			Total
Region	Area	Agency	Hatchery	Project	Species	Sport	Use/Subsistence	Broodstock	Return
Southcentral									
	Cook Inlet								
		ADF&G	WJ Hernandez	WJ Hernandez - Region II Lakes	Arctic Char	1,802	66	^a	1,868
					Grayling	829	^a	^a	829
					Landlocked Salmon	11,044	^a	^a	11,044
					Rainbow	33,410	3,255	^a	36,665
	Cook Inlet Total					47,085	3,321	0	50,406
Southcentral Total						47,085	3,321	0	50,406
Arctic/Yukon/Kuskokwim									
		ADF&G	Ruth Burnett	Ruth Burnett - Lakes	Arctic Char	2,791	^a	^a	2,791
					Grayling	991	^a	^a	991
					Landlocked Salmon	7,499	^a	^a	7,499
					Rainbow	25,670	^a	^a	25,670
Arctic/Yukon/Kuskokwim Total						36,951	0	0	36,951
Statewide Total						84,036	3,321	0	87,357

^a Not applicable.

Table 18.–Summary of salmon eggs collected in 2014 per fish resource permits issued by ADF&G. The egg number is the maximum number allowed to be collected, not necessarily the number hatched and released as juveniles, as per the permit for the particular project.

Bioenhancement Research Permits			
Eggs collected under this type of propagation permit are for bioenhancement research by accredited institutions of higher learning and cooperative governmental projects.			
Area	Permittee	Stock/Species	Maximum number allowed to be collected
Southeast			
	City of Pelican	Gastineau chum	250,000 eggs
	NOAA Auke Bay Labs	Auke Creek sockeye	50,000 eggs
	NOAA Little Port Walter	Keta River Chinook	400,000 eggs
	NOAA Little Port Walter	Unuk River Chinook	400,000 eggs
Arctic-Yukon-Kuskokwim			
	Native Village of White Mountain	Boston Creek Chinook	20 spawning pair
	Native Village of White Mountain	Niukluk River coho	30 spawning pair
	Norton Sound Economic Development Corporation	North River chum	20 spawning pair
	Norton Sound Economic Development Corporation	Snake River chum	250 spawning pair
	Norton Sound Economic Development Corporation	Snake River coho	63 spawning pair
	Norton Sound Economic Development Corporation	Solomon River chum	60 spawning pair
	Norton Sound Economic Development Corporation	Unalakleet River Chinook	20 spawning pair
Westward			
	Sun'aq Tribe of Kodiak	Buskin River coho	50,000 eggs

Educational and Vocational Permits			
Eggs collected under this type of propagation permit are for educational and vocational purposes.			
Area	Permittee	Stock/Species	Maximum number allowed to be collected
Southeast			
	Juneau-Douglas High School	Dredge Lake coho	5,000 eggs
	Petersburg High School	Blind Slough coho	50,000 eggs
	Petersburg High School	5 Mile Creek pink	50,000 eggs
Westward			
	Sand Point School	Humboldt Creek coho	4 spawning pair
	Unalaska City School	Iliuliuk River coho	3 spawning pair

Scientific and Educational Permits			
Eggs collected under this type of propagation permit are for Classroom Incubation Projects and in most cases are provided by hatcheries and not released.			
Area	Permittee	Species	Maximum number allowed to be collected
Southeast			
	Fawn Mountain Elementary	coho	150
	Taiya Inlet Watershed Council	coho	250
	USFS/ Holy Name School	coho	50
	USFS/ North Point Higgins Elementary	coho	50
	Yakutat Schools	coho	100
Southcentral			
	Abbott Loop Elementary	coho	500
	Academy Charter	coho	500
	ADF&G Anchorage Lobby	coho	500
	Airport Heights Elementary	coho	500

-continued-

Table 18.–Page 2 of 6.

Area	Permittee	Species	Maximum number allowed to be collected
Southcentral (continued)			
	Alaska Native Cultural Charter School	coho	500
	Alpenglow Elementary	coho	500
	American Charter	coho	500
	Anchor Lutheran School	coho	500
	Aquarian Elementary	coho	500
	Aurora Elementary	coho	500
	Aurora Borealis	coho	500
	AVAIL High School	coho	500
	Bartlett High School	coho	500
	Baxter Elementary	coho	500
	Bayshore Elementary	coho	500
	Bear Valley Elementary	coho	500
	Begich Middle School	coho	500
	Benny Benson	coho	500
	Beryozova	coho	500
	Big Lake Elementary	coho	500
	Birchtree Charter	coho	500
	Birchwood ABC School	coho	500
	Bowman Elementary	coho	500
	Butte Elementary	coho	500
	Campbell Elementary	coho	500
	Central Middle School	coho	500
	Chapman School	coho	500
	Chester Valley Elementary	coho	500
	Chinook Elementary	coho	500
	Chugiah Optional	coho	500
	Chugiak Elementary	coho	500
	Chugiak High School	coho	500
	Clark Middle School	coho	500
	College Gate Elementary	coho	500
	Colony High School	coho	500
	Cook Inlet Academy	coho	500
	Cooper Landing School	coho	500
	Copper River Watershed Project	coho	300
	Cottonwood Elementary	coho	500
	Creekside Park Elementary	coho	500
	Denali Montessori Elementary	coho	500
	Dimond High School	coho	500
	Eagle Academy Charter School	coho	500
	Eagle River Elementary	coho	500
	East Anchorage High School	coho	500
	Fairview Elementary	coho	500
	Faith Lutheran Elementary	coho	500
	Finger Lake Elementary	coho	500
	Fireweed School	coho	500
	Fronteras Charter	coho	500
	Girdwood K-8 School	coho	500
	Glacier View School	coho	500
	Gladys Wood Elementary	coho	500
	Golden View Middle School	coho	500
	Goose Bay Elementary	coho	500

-continued-

Table 18.–Page 3 of 6.

Area Permittee	Species	Maximum number allowed to be collected
Southcentral (continued)		
Government Hill Elementary	coho	500
Grace Lutheran Pre-8 School	coho	500
Gruening Middle School	coho	500
Hanshew Middle School	coho	500
Hermon Hutchins School	chum	500
Highland Tech High	coho	500
Homer Flex High School	coho	500
Homer High School	coho	500
Homestead Elementary	coho	500
Houston High	coho	500
Huffman Elementary	coho	500
Iditarod Elementary	coho	500
Igiugig School	chum	500
Inlet View Elementary	coho	500
Jesse Lee School	coho	500
Kachemak Selo School	coho	500
Kaleidoscope Elementary	coho	500
Kalifornsky Beach Elementary	coho	500
Kasuun Elementary	coho	500
Kenai Central High School	coho	500
Kenai Middle School	coho	500
Kincaid Elementary	coho	500
King Career Center	coho	500
Klatt Elementary	coho	500
Knik Elementary	coho	500
Lake Hood Elementary	coho	500
Lake Otis Elementary	coho	500
Larson Elementary	coho	500
Louise Farm School	coho	500
Machetanz Elementary	coho	500
McLaughlin School	coho	500
McNeil Canyon Elementary	coho	500
Meadow Lakes Elementary	coho	500
Mears Middle School	coho	500
Midnight Sun Charter	coho	500
Mirror Lake Middle School	coho	500
Moose Pass	coho	500
Mt. Illiamna	coho	500
Mt. Spurr Elementary	coho	500
Mt. View Elementary	coho	500
Muldoon Elementary	coho	500
Nanwalek School	coho	500
Nikiski North Star Elem	coho	500
Nikolaevsk School	coho	500
Ninilchik School	coho	500
Northern Lights ABC	coho	500
Northstar RTC	coho	500
Northwood ABC	coho	500
Nunaka Valley Elementary	coho	500
Ocean View Elementary	coho	500

-continued-

Table 18.–Page 4 of 6.

Area Permittee	Species	Maximum number allowed to be collected
Southcentral (continued)		
O'Malley Elementary	coho	500
Orion Elementary	coho	500
Palmer High School	coho	500
Paul Banks School	coho	500
Pioneer Peak Elementary	coho	500
Polaris School	coho	500
Ptarmigan Elementary	coho	500
Rabbit Creek Elementary	coho	500
Ravenwood Elementary	coho	500
Razdolna	coho	500
Redoubt Elementary	coho	500
Rilke Schule	coho	500
Rogers Park Elementary	coho	500
Romig Middle School	coho	500
Russian Jack Elementary	coho	500
Sand Lake Elementary	coho	500
SAVE High School	coho	500
Scenic Park	coho	500
Service High School	coho	500
Seward Elementary	coho	500
Seward Middle School	coho	500
Shaw Elementary	coho	500
Sherrod Elementary	coho	500
Skyview Middle School	coho	500
Snowshoe Elementary	coho	500
Soldotna Elementary	coho	500
Soldotna High School	coho	500
Soldotna Prep	coho	500
South High School	coho	500
Southcentral Foundation	coho	500
Spring Hill Elementary	coho	500
Steller Secondary School	coho	500
Sterling Elementary	coho	500
Susitna Elementary	coho	500
Sutton Elementary	coho	500
Swanson Elementary	coho	500
Taku Elementary	coho	500
Talkeetna Elementary	coho	500
Tanaina Elementary	coho	500
Teeland Middle School	coho	500
The Soldotna Tutoring Program	coho	500
Trailside Elementary	coho	500
Trapper Creek Elementary	coho	500
Tudor Elementary	coho	500
Turnagain Elementary	coho	500
Tustumena Elementary	coho	500
Tyson Elementary	coho	500
Ursa Major Elementary	coho	500
Ursa Minor Elementary	coho	500
Valley Pathways	coho	500

-continued-

Table 18.–Page 5 of 6.

Area	Permittee	Species	Maximum number allowed to be collected
Southcentral (continued)			
	Voznesenka School	coho	500
	Wasilla Christian School	coho	500
	Wasilla Middle School	coho	500
	Wendler Middle School	coho	500
	West Homer Elementary	coho	500
	West High School	coho	500
	Whaley School	coho	500
	Whitter School	coho	500
	Williwaw	coho	500
	Willow Crest	coho	500
	Willow Elementary	coho	500
	Winterberry	coho	500
	Wonder Park Elementary	coho	500
Arctic-Yukon-Kuskokwim			
	ADF&G Fairbanks Lobby	coho	300
	Badger Elementary	coho	300
	Delta Elementary School	coho	500
	Eek School	coho	300
	Elim School	coho	500
	Emmonak School	coho	500
	Fort Greely Elementary	coho	300
	Fort Yukon School	coho	500
	Gladys Jung School	coho	500
	Kenny Lake School	coho	300
	Ladd Elementary	coho	300
	Marshall School	coho	500
	Mikelnguut Elitnaurviat School	coho	500
	Nome Beltz High School	coho	500
	Nome Elementary	coho	500
	Nordale Elementary	coho	300
	Pearl Creek Elementary	coho	300
	Ticasuk Brown Elementary	coho	300
	Tok School	coho	500
	Trapper School	coho	300
	Two Rivers Elementary	coho	300
	University Park Elementary	coho	300
	Watershed School	coho	300
	Weller Elementary	coho	300
	Woodriver Elementary	coho	300
Westward			
	Akhiok School	coho	500
	Chiniak School	coho	500
	East Elementary	coho	500
	Karluk School	coho	500
	Kodiak Christian School	coho	500
	Kodiak High School	coho	500
	Kodiak Island Correspondence	coho	500
	Kodiak Learning Center	coho	500
	Kodiak Middle School	coho	500

continued-

Table 18.–Page 6 of 6.

Area Permittee	Species	Maximum number allowed to be collected
Westward (continued)		
Larsen Bay School	coho	500
Main Elementary	coho	500
North Star Elementary	coho	500
Old Harbor School	coho	500
Ouzinkie School	coho	500
Peterson Elementary	coho	500
Port Lions School	coho	500
Sand Point School	coho	500
Sand Point School	pink	500
SF Kodiak	coho	500
St. Mary's Catholic School	coho	500

Table 19.—Updated Chinook salmon returns to Alaska hatcheries in 2013, including common property harvests, as reported by operators.

Region/Area/Operator/Hatchery/Project			Common Property Harvest				Broodstock	Cost Recovery	Other	Total Return
			Seine	Gillnet	Troll	Sport/Personal Use/Subsistence				
Southeast										
Southern Southeast										
SSRAA	Crystal Lake		^a	330	467	10	1,466	^a	1,680	3,953
	Anita Bay		4,740	16,010	2,139	175	^a	^a	^a	23,064
	Neets Bay		5,260	3,440	2,490	225	^a	3,774	^a	15,189
	Whitman Lake		30	211	500	2,515	835	1,679	4,840	725
KTHC	Deer Mountain		29	^a	25	58	33	^a	^a	^a
POWHA	Port Saint Nicholas			^a	302	456	6	^a	314	^a
	Coffman Cove		21	629	186	15	^a	^a	^a	851
Southern Southeast Total			10,232	21,236	8,311	1,299	3,145	8,928	2,405	55,556
Northern Southeast										
NSRAA	Hidden Falls		2,867	63	1,683	258	2,204	236	240	7,551
	Lutak Inlet		^a	14	5	9	^a	^a	^a	28
	Medvejie Creek		3,672	6,315	9,742	1,620	2,170	17,956	812	42,287
AKI	Port Armstrong		28	48	731	36	365	817	937	2,962
DIPAC	Macaulay		267	808	518	2,383	776	7	95	4,854
	Skagway site		^a	59	201	327	152	^a	326	1,065
FED	Little Port Walter		123	49	706	29	588	^a	164	1,659
SSSC	Sheldon Jackson		43	44	159	^a	^a	^a	77	323
Northern Southeast Total			7,000	7,400	13,745	4,662	6,255	19,016	2,651	60,729
Southeast Total			17,232	28,636	22,056	5,961	9,400	27,944	5,056	116,285
Southcentral										
Cook Inlet										
ADF&G	Ship Creek Complex		^a	^a	^a	824	1,051	^a	^a	1,875
	Crooked Creek		^a	^a	^a	^a	90	^a	1,479	1,569
	Deception Creek		^a	^a	^a	^a	44	^a	62	106
	Eklutna tailrace		^a	^a	^a	159	^a	^a	^a	159
	Ninilchik River		^a	^a	^a	^a	203	^a	111	314
Cook Inlet Total			0	0	0	983	1,388	0	1,652	4,023
Southcentral Total			0	0	0	983	1,388	0	1,652	4,023
Kodiak/Westward										
KRAA	Pillar Creek	Kodiak Road System	^a	^a	^a	3,158	188	^a	^a	3,346
Kodiak/Westward Total			0	0	0	3,158	188	0	0	3,346
Statewide Total			17,232	28,636	22,056	10,102	10,976	27,944	6,708	123,654

Note: Highlighted fields are updates to the 2013 estimated return numbers using 2014 hatchery annual reports.

^a Not applicable.

Table 20.—Updated sockeye salmon returns to Alaska hatcheries in 2013, including common property harvests, as reported by operators.

Region/Area/Operator/Hatchery			Project	Common Property Harvest				Broodstock	Cost Recovery	Other	Total Return
				Seine	Gillnet	Troll	Sport/Personal use/Subsistence				
Southeast											
Southern Southeast											
SSRAA	Burnett Inlet	Burnett Inlet	60	1,030	a	a	a	a	a		1,090
		McDonald Lake	430	115	a	a	a	a		819	1,364
Southern Southeast Total			490	1,145	0	0	0	0	0	819	2,454
Northern Southeast											
DIPAC	Snettisham	Snettisham	9,705	86,340	a	a	6,811	48,719	4,274		155,849
		Stikine River (US Harvest)		17,233	a	a	a	a	47,146		64,379
		Sweetheart Lake	1,125	1,815	a	5,063	a	a	a		8,003
		Taku River (US Harvest)		12,609	a	a	a	a	8,890		21,499
Northern Southeast Total			10,830	117,997	0	5,063	6,811	48,719	60,310		249,730
Southeast Total			11,320	119,142	0	5,063	6,811	48,719	61,129		252,184
Southcentral											
Prince William Sound											
PWSAC	Gulkana I and II	Gulkana	a	318,212	a	130,197	19,099	a	53,270		520,778
	Main Bay	Main Bay	46,808	667,801	a	1,000	9,833	a	179,226		904,668
		Marsha Lake	6,400	a	a	a	a	a	a		6,400
		Solf Lake	a	2,603	a	a	a	a	a		2,603
Prince William Sound Total			53,208	988,616	0	131,197	28,932	0	232,496		1,434,449
Cook Inlet											
CIAA	Trail Lakes	Bear Lake	a	a	a	20,000	3,606	43,369	10,254		77,229
		English Bay Lake	a	a	a	256	117	a	748		1,121
		Hidden Lake	a	12,681	a	9,430	1,167	a	16,560		39,838
		Kirschner Lake	a	a	a	a	a	8,288	a		8,288
		Leisure/Hazel Lake	15,554	a	a	2,000	a	8,755	a		26,309
		Tutka Bay	16,285	a	a	5,000	2,556	13,137	2,357		39,335
Cook Inlet Total			31,839	12,681	0	36,686	7,446	73,549	29,919		192,120
Southcentral Total			85,047	1,001,297	0	167,883	36,378	73,549	262,415		1,626,569
Kodiak/Westward											
Kodiak											
KRAA	Kitoi Bay	Kitoi Bay	110,351	a	a	100	640	4,441	7,111		122,643
	Pillar Creek	Foul Bay	9,201	a	a	a	a	a	a		9,201
		Settler's Cove	a	a	a	2,743	a	a	a		2,743
		Spiridon Lake	33,299	201,807	a	a	a	95,725	a		330,831
		Waterfall Bay	7,273	a	a	a	a	a	a		7,273
Kodiak/Westward Total			160,124	201,807	0	2,843	640	100,166	7,111		472,691
Statewide Total			256,491	1,322,246	0	175,789	43,829	222,434	330,655		2,351,444

Note: Highlighted fields are updates to the 2013 estimated return numbers using 2014 hatchery annual reports.

^a Not applicable.

Table 21.—Updated coho salmon returns to Alaska hatcheries in 2013, including common property harvests, as reported by operators.

				Common Property							
Region/Area/Operator/Hatchery		Project		Seine	Gillnet	Troll	Sport/Personal Use/Subsistenc e	Broodstoc k	Cost Recover y	Other	Total Return
Southeast											
Southern Southeast											
SSRAA	Burnett Inlet	Burnett Inlet		652	5,090	1,857	1,000	3,351	17,000	1,000	29,950
		Neck Lake		967	12,575	2,098	1,000	^a	14,225	2,661	33,526
		Crystal Lake		581	3,009	5,403	155	5,399	^a	^a	14,547
		Neets Bay		15,350	43,432		3,420	1,467	25,380		227,277
		Whitman Lake		2,138	4,441	14,487	480	4,484	4,535	1,264	31,829
		Anita Bay		754	7,384	6,840	125	^a	^a	1,164	16,267
		Bakewell Lake		2,900	7,566	23,670	590	^a	^a	2,755	37,481
		Nakat Inlet		2,610	20,648	16,105	450	^a	^a	347	40,160
KTHC	Deer Mountain	Deer Mountain		1,270	795	1,141	811	^a	^a	^a	4,017
POWHA	Klawock River	Klawock Lake		34,859	185		9,194	4,051	67,506		325,785 ^a
MIC	Tamgas Creek			Not							
Southern Southeast Total				62,081	105,125	391,249	17,225	18,752	128,646	37,761	760,839
Northern Southeast											
NSRAA	Hidden Falls	Hidden Falls		14,908	1,230	53,340	2,779	8,433	43,208	4,482	128,380
		Mist Cove		41,554	^a		6,841	^a	58,432	8,730	249,266
	Medvejie Creek	Medvejie Creek		3,815	1,972	8,947	2,403	1,544	100	882	19,663
		Sawmill Creek		^a	^a	^a	^a	^a	^a	200	200
AKI	Port Armstrong	Port Armstrong		2,866	^a	76,654	2,457	3,508	42,117	9,055	136,657
DIPAC	Macaulay	Macaulay		2,018	8,402	11,973	3,275	1,100	8,965	355	36,088
KNFC	Gunnuk Creek	Gunnuk Creek		944	^a	3,778	1,862	517	156	3,208	10,465
SSSC	Sheldon Jackson	Sheldon Jackson		72	15	496	42	148	^a	12	785
Northern Southeast Total				66,177	11,619	288,897	19,659	15,250	152,978	26,924	581,504
				128,258	116,744	680,146	36,884	34,002	281,624	64,685	1,342,343
Southeast Total											
				128,258	116,744	680,146	36,884	34,002	281,624	64,685	3
Southcentral											
Prince William Sound											
PWSAC	Wally Noerenberg	Lake Bay		16,005	48,017	^a	400	1,413	^a	880	66,715
		Chenega		^a	^a	^a	1,900	^a	^a	^a	1,900
		Cordova		^a	^a	^a	5,700	^a	^a	^a	5,700
		Whittier		^a	^a	^a	3,800	^a	^a	^a	3,800
VFDA	Solomon Gulch	Solomon Gulch			^a	^a	48,277	2,059	38,346	5,012	249,430
Prince William Sound Total				171,741	48,017	0	60,077	3,472	38,346	5,892	327,545

-continued-

Table 21.–Page 2 of 2.

Region/Area/Operator/Hatchery				Common Property Harvest			Sport/Personal Use/Subsistenc e	Broodstoc k	Cost Recover y	Other	Total Return
				Seine	Gillnet	Troll					
Cook Inlet											
CIAA	Trail Lakes	Creek	Bear Lake	a	a	a	5400	498	a	2,624	8,522
ADF&G	Ship Complex			a	a	a	3,264	792	a	433	
			Ship Creek								4,489
			Bird Creek	a	a	a	980	a	a	a	980
			Eklutna tailrace		a	a	1,521	a	a	a	1,521
Cook Inlet Total				0	0	0	11,165	1,290	0	3,057	15,512
Southcentral Total				171,741	48,017	0	71,242	4,762	38,346	8,949	343,057
Kodiak/Westward											
Kodiak											
KRAA	Kitoi Bay		Kitoi Bay	52,732	a	a	100	1,051	a	a	53,883
			Kodiak Road System Lakes								
	Pillar Creek		a		a	a	5,600	a	a	a	5,600
Kodiak/Westward Total				52,732	0	0	5,700	1,051	0	0	59,483
					164,76	680,14				73,63	1,744,88
Statewide Total				352,731	1	6	113,826	39,815	319,970	4	3

Note: Highlighted fields are updates to the 2013 estimated return numbers using 2014 hatchery annual reports.

^a Not applicable.

Table 22.—Updated pink salmon returns to Alaska hatcheries in 2013, including common property harvest, as reported by operators.

Region/Area/Operator/Hatchery			Project	Common Property Harvest				Broodstock	Cost Recovery	Other	Total Return
				Seine	Gillnet	Troll	Sport/Personal Use/Subsistence				
Southeast											
Northern Southeast											
NSRAA	Medvejie Creek	Medvejie Creek	a	a	a	a	7,049	12,798	800	20,647	
AKI	Port Armstrong	Port Armstrong	1,111,871	a	6,802	a	162,157	843,878	80,000	2,204,708	
KNFC	Gunnuk Creek	Gunnuk Creek	266,250	a	70,168	218	52,307	627	128,699	518,269	
SSSC	Sheldon Jackson	Sheldon Jackson	a	a	a	a	9,027	188,515	a	197,542	
Northern Southeast Total			1,378,121	0	76,970	218	230,540	1,045,818	209,499	2,941,166	
Southeast Total			1,378,121	0	76,970	218	230,540	1,045,818	209,499	2,941,166	
Southcentral											
Prince William Sound											
PWSAC	AF Koernig	Sawmill Bay	19,381,097	6,740	a	a	221,408	512,872	100,000	20,222,117	
	Cannery Creek	Cannery Creek	15,526,146	46,130	a	a	368,264	18,977	75,000	16,034,517	
	Wally Noerenberg	Lake Bay	14,969,890	825,180	a	a	265,188	1,239,183	180,000	17,479,441	
VFDA	Solomon Gulch	Solomon Gulch	20,130,567	a	a	25,000	320,184	1,959,489	46,909	22,482,149	
Prince William Sound Total			70,007,700	878,050	0	25,000	1,175,044	3,730,521	401,909	76,218,224	
Cook Inlet											
CIAA	Tutka Bay Lagoon	Tutka Bay	866	a	a	5,000	143,884	46,238	20,000	215,988	
		Halibut Cove	19,477	a	a	a	a	a	a	19,477	
Cook Inlet Total			19,477	0	0	0	0	0	0	19,477	
Southcentral Total			70,027,177	878,050	0	25,000	1,175,044	3,730,521	401,909	76,237,701	
Kodiak/Westward											
Kodiak											
KRAA	Kitoi Bay	Kitoi Bay	10,130,197	0	0	0	636,524	1,628,821	0	12,395,542	
Kodiak/Westward Total			10,130,197	0	0	0	636,524	1,628,821	0	12,395,542	
Statewide Total			81,535,495	878,050	76,970	25,218	2,042,108	6,405,160	611,408	91,574,409	

Note: Highlighted fields are updates to the 2013 estimated return numbers using 2014 hatchery annual reports.

^a Not applicable.

Table 23.—Updated chum salmon returns to Alaska hatcheries in 2013, including common property harvests, as reported by operators.

		Common Property Harvest									
Region/Operator/Hatchery		Project	Seine	Gillnet	Troll	Sport/Personal Use/Subsistence	Broodstock	Cost Recovery	Other	Total Return	
Southeast											
Southern Southeast											
SSRAA	Neets Bay	Anita Bay	196,888	143,944	9,166	a	a	6,210	5,507	361,715	
		Nakat Inlet	1,130	19,125	a	a	a	a	a	20,255	
	Whitman Lake	Neets Bay	163,230	39,045	167,056	a	141,634	445,965	84,138	1,041,068	
		Anita Bay	49,222	35,986	3,556	a	a	1,550	1,377	91,691	
		Kendrick Bay	433,755	16,455	520	a	a	a	37,001	487,731	
		Nakat Inlet	19,065	208,055	110	a	a	a	30,977	258,207	
Southern Southeast Total			863,290	462,610	180,408	0	141,634	453,725	159,000	2,260,667	
Northern Southeast											
NSRAA	Haines Projects		a	9,758	a	a	2,979		11,657	24,394	
		Hidden Falls	1,239,811	a	103	a	138,192	7,295	1,250	1,386,651	
	Medvejie Creek	Medvejie Creek	954,125	517,387	392,716	a	51,575	14,134	862	1,931,058	
AKI	Port Armstrong	Port Armstrong	10,000	500	5,000	a	31,100	122,214	1,500	170,314	
DIPAC	Macaulay	Gastineau Channel	8,656	571,759	50,967	4,000	145,983	207,382	25,000	1,013,747	
		Amalga Harbor	1,106,006	523,785	141,859	a	a	1,049,962	a	2,821,612	
		Boat Harbor	6,675	735,704	39,300	a	a	a	a	781,679	
		Limestone Inlet	1,984	218,653	11,680	a	a	a	a	232,317	
KNFC	Gunnuk Creek	Gunnuk Creek	57,690	a	8,804	1,842	30,670	a	67,134	166,140	
		Southeast Cove	153,391	a	42,341	41		17,101	78,404	291,278	
SSSC	Sheldon Jackson	Sheldon Jackson	a	a	a	a	480	2,169	a	2,649	
		Deep Inlet	152,505	82,698	62,771	a	8,244	2,259	138	308,656	
Northern Southeast Total			3,690,843	2,660,244	755,541	5,883	409,223	1,422,516	185,945	9,130,495	
Southeast Total			4,554,133	3,122,854	935,949	5,883	550,857	1,876,241	344,945	11,391,162	
Southcentral											
Prince William Sound											
PWSAC	Armin F Koernig	Armin F Koernig	308,339	10,788	a	a	a	a	a	319,127	
		Wally Noerenberg	Lake Bay	21,717	2,218,963	a	1,000	187,281	581,442	25,000	3,035,403
		Port Chalmers	38,704	460,884	a	a	a	a	a	499,588	
Prince William Sound Total			368,760	2,690,635	0	1,000	187,281	581,442	25,000	3,854,118	
Southcentral Total			368,760	2,690,635	0	1,000	187,281	581,442	25,000	3,854,118	
Kodiak/Westward											
Kodiak											
KRAA	Kitoi Bay	Kitoi Bay	96,799	a	a	a	34,205	581	a	131,585	
Kodiak/Westward Total			96,799	0	0	0	34,205	581	0	131,585	
Statewide Total			5,019,692	5,813,489	935,949	5,112	772,343	2,458,264	369,945	15,376,865	

^a Not applicable.

Table 24.—Updated “other” hatchery-produced returns to Alaska hatcheries in 2013, as reported by operators.

Region	Area	Agency	Hatchery	Project	Species	Sport/Personal Use/Subsistence	Broodstock	Total Return
Southcentral								
	Cook Inlet							
		ADF&G	WJ Hernandez	WJ Hernandez Region II Lakes	Arctic Char	862	68	930
					Grayling	487		487
					Landlocked	3,353		3,353
					Salmon			
					Rainbow	20,837	4,204	25,041
	Cook Inlet Total					25,539	4,272	29,811
Southcentral Total						25,539	4,272	29,811
Arctic/Yukon/Kuskokwim								
		ADF&G	Ruth Burnett	Ruth Burnett	Arctic Char	4,494		4,494
					Grayling	1,674		1,674
					Landlocked			
					Salmon	12,212		12,212
					Rainbow	39,015		39,015
Arctic/Yukon/Kuskokwim Total						57,395	0	57,395
Statewide Total						82,934	4,272	87,206

Note: Highlighted fields are updates to the 2013 estimated return numbers using 2014 hatchery annual reports.

Table 25.—Summary of anadromous salmon production (all species) from Alaska hatcheries and fisheries enhancement projects.

Year	Egg Takes (millions)	Fry Releases (millions)	Total Returns (thousands)
1966	0	1	0
1967	0	1	0
1968	0	1	0
1969	0	1	0
1970	0	1	0
1971	0	1	0
1972	2	2	0
1973	4	2	0
1974	9	3	0
1975	36	11	6
1976	61	13	8
1977	100	41	187
1978	134	75	218
1979	153	87	1,621
1980	299	96	3,061
1981	475	217	4,911
1982	548	365	6,939
1983	647	419	6,560
1984	829	512	8,258
1985	997	659	16,651
1986	1,025	763	12,674
1987	1,388	814	25,363
1988	1,341	1,115	18,432
1989	1,419	1,087	35,441
1990	1,602	1,154	48,897
1991	1,635	1,319	48,567
1992	1,725	1,324	23,237
1993	1,685	1,465	33,478
1994	1,759	1,299	55,676
1995	1,913	1,503	37,291
1996	1,688	1,638	50,012
1997	1,730	1,477	51,260
1998	1,773	1,451	56,043
1999	1,847	1,434	72,290
2000	1,734	1,470	63,107
2001	1,804	1,478	61,729
2002	1,866	1,484	49,325
2003	1,933	1,521	79,888
2004	1,734	1,648	46,467
2005	1,705	1,427	80,978
2006	1,822	1,433	46,502
2007	1,724	1,560	80,263
2008	1,661	1,487	60,441
2009	1,783	1,463	45,005
2010	1,808	1,561	90,817
2011	1,912	1,539	47,836
2012	1,744	1,674	47,251
2013	2,005	1,551	111,385
2014	1,908	1,763	62,032
Total	53,972	43,408	1,590,107

Table 26.–Summary of Chinook salmon production from Alaska hatcheries and fisheries enhancement projects.

Year	Egg Takes (millions)	Fry Releases (millions)	Total Returns (thousands)
1966	0	0	0
1967	0	1	0
1968	0	0	0
1969	0	0	0
1970	0	0	0
1971	0	0	0
1972	0	0	0
1973	0	0	0
1974	0	1	0
1975	1	0	0
1976	1	0	0
1977	3	1	0
1978	2	1	0
1979	2	1	3
1980	3	1	7
1981	1	1	5
1982	3	1	12
1983	7	2	13
1984	10	4	21
1985	19	4	26
1986	16	6	40
1987	17	8	94
1988	18	9	75
1989	15	8	78
1990	17	10	118
1991	20	7	174
1992	13	10	132
1993	12	12	112
1994	13	10	127
1995	14	7	169
1996	12	7	166
1997	12	7	150
1998	13	7	104
1999	12	8	114
2000	12	8	174
2001	14	9	188
2002	19	8	157
2003	15	10	159
2004	16	10	207
2005	15	10	139
2006	17	10	108
2007	17	11	137
2008	18	11	140
2009	17	12	116
2010	13	11	106
2011	13	8	131
2012	11	10	93
2013	14	9	124
2014	14	9	92
Total	480	279	3,811

Table 27.—Summary of sockeye salmon production from Alaska hatcheries and fisheries enhancement projects.

Year	Egg Takes (millions)	Fry Releases (millions)	Total Returns (thousands)
1972	0	0	0
1973	2	0	0
1974	2	1	0
1975	8	1	0
1976	24	2	0
1977	19	14	27
1978	35	16	13
1979	30	17	318
1980	38	15	700
1981	51	28	401
1982	59	45	56
1983	68	53	210
1984	86	52	382
1985	108	73	754
1986	102	77	1,296
1987	107	60	992
1988	107	69	1,651
1989	112	77	2,037
1990	99	74	4,165
1991	113	70	5,432
1992	104	74	4,185
1993	122	61	5,139
1994	114	78	4,177
1995	115	81	1,505
1996	127	75	2,911
1997	97	77	3,304
1998	95	71	2,488
1999	91	66	3,588
2000	73	60	2,076
2001	89	39	3,329
2002	92	67	3,645
2003	94	64	4,750
2004	60	71	3,554
2005	81	39	2,761
2006	92	53	2,618
2007	83	63	2,347
2008	79	61	1,781
2009	80	57	1,791
2010	81	56	2,548
2011	91	54	3,036
2012	86	61	2,642
2013	83	57	2,351
2014	75	60	2,718
Total	3,274	2,189	87,679

Table 28.—Summary of coho salmon production from Alaska hatcheries and fisheries enhancement projects.

Year	Egg Takes (millions)	Fry Releases (millions)	Total Returns (thousands)
1966	0	1	0
1967	0	1	0
1968	0	1	0
1969	0	1	0
1970	0	1	0
1971	0	0	0
1972	2	2	0
1973	2	2	0
1974	1	2	0
1975	7	4	0
1976	5	3	0
1977	5	5	13
1978	6	3	0
1979	4	3	71
1980	4	2	21
1981	8	3	55
1982	17	3	108
1983	17	10	96
1984	21	11	180
1985	21	15	309
1986	22	13	659
1987	26	15	455
1988	28	19	287
1989	24	16	503
1990	22	18	946
1991	24	14	1,287
1992	21	15	1,397
1993	25	15	1,023
1994	28	18	1,327
1995	27	21	1,313
1996	30	21	1,369
1997	34	23	1,088
1998	29	21	1,393
1999	23	22	1,542
2000	33	15	1,655
2001	32	20	1,799
2002	35	21	2,120
2003	38	19	1,495
2004	33	23	1,203
2005	33	22	1,444
2006	36	22	1,361
2007	34	26	1,133
2008	40	25	1,453
2009	39	24	1,152
2010	35	29	1,359
2011	42	30	1,420
2012	41	25	973
2013	36	28	1,743
2014	41	28	2,058
Total	1,031	677	37,809

Table 29.—Summary of pink salmon production from Alaska hatcheries and fisheries enhancement projects.

Year	Egg Takes (millions)	Fry Releases (millions)	Total Returns (thousands)
1973	1	0	0
1974	5	0	0
1975	15	5	6
1976	23	4	8
1977	66	18	147
1978	79	50	202
1979	91	60	1,224
1980	181	64	2,318
1981	328	140	4,396
1982	344	252	6,610
1983	406	261	5,939
1984	443	338	5,866
1985	604	366	14,158
1986	511	484	8,739
1987	859	432	21,860
1988	797	730	13,767
1989	975	675	31,476
1990	1,013	811	41,631
1991	998	862	39,493
1992	1,077	797	14,429
1993	1,031	919	20,497
1994	1,076	787	41,055
1995	1,162	921	24,770
1996	929	999	29,214
1997	1,064	892	33,957
1998	1,119	873	38,651
1999	1,085	878	51,973
2000	1,074	880	40,395
2001	1,101	942	47,247
2002	1,168	938	30,835
2003	1,108	962	59,773
2004	960	965	30,565
2005	949	808	69,076
2006	964	809	26,702
2007	952	851	64,308
2008	908	823	43,411
2009	943	818	29,276
2010	979	855	73,849
2011	1,023	883	31,623
2012	861	943	27,999
2013	1,133	798	91,790
2014	1,059	1,016	49,123
Total	31,464	25,911	1,168,359

Table 30.—Summary of chum salmon production from Alaska hatcheries and fisheries enhancement projects.

Year	Egg Takes (millions)	Fry Releases (millions)	Total Returns (thousands)
1974	1	0	0
1975	5	1	0
1976	7	2	0
1977	8	3	0
1978	12	4	3
1979	26	7	6
1980	74	13	16
1981	87	46	53
1982	125	63	153
1983	149	94	301
1984	269	108	1,809
1985	245	201	1,404
1986	374	182	1,939
1987	380	298	1,963
1988	392	289	2,653
1989	294	310	1,347
1990	450	241	2,037
1991	480	365	2,181
1992	510	428	3,094
1993	496	459	6,707
1994	529	407	8,989
1995	596	473	9,533
1996	590	535	16,353
1997	524	478	12,761
1998	517	479	13,407
1999	636	461	15,073
2000	541	508	18,806
2001	568	467	9,166
2002	551	451	12,568
2003	679	466	13,710
2004	665	578	10,939
2005	627	549	7,558
2006	714	539	15,714
2007	639	609	12,338
2008	615	567	13,655
2009	705	552	12,670
2010	700	609	12,955
2011	743	563	11,627
2012	743	635	15,544
2013	739	659	15,377
2014	720	651	8,041
Total	17,724	14,354	292,449

Table 31.—Summary of commercial harvest of salmon from Alaska fisheries enhancement projects, in thousands of fish.

Year	Total commercial harvest ^a	Total cost recovery harvest	CCPH ^b	Hatchery-produced fish in CCPH	Percent of hatchery-produced fish in total commercial harvest	Percent of hatchery-produced fish in CCPH
1977	50,812	109	50,703	17	0%	0%
1978	82,289	215	82,174	3	0%	0%
1979	88,762	253	88,509	582	1%	1%
1980	110,012	347	109,666	1,711	2%	2%
1981	113,333	856	112,477	3,501	4%	3%
1982	111,580	1,364	110,216	4,921	6%	4%
1983	127,706	856	126,850	4,874	4%	4%
1984	133,644	1,043	132,600	5,730	5%	4%
1985	144,728	1,854	142,874	12,863	10%	9%
1986	126,856	1,212	125,644	9,358	8%	7%
1987	95,985	4,181	91,804	18,004	23%	20%
1988	99,440	2,499	96,941	13,339	15%	13%
1989	151,304	15,013	136,291	16,122	21%	12%
1990	153,243	10,388	142,855	34,537	29%	24%
1991	184,005	13,169	170,836	29,688	23%	17%
1992	135,387	7,255	128,131	11,464	14%	9%
1993	191,236	4,853	186,383	24,078	15%	13%
1994	194,586	15,906	178,670	34,769	26%	19%
1995	215,201	9,285	205,918	24,364	16%	12%
1996	173,035	14,657	158,396	29,364	25%	18%
1997	122,177	19,410	102,773	26,780	38%	26%
1998	150,485	15,649	134,836	34,554	33%	26%
1999	215,185	22,608	192,597	42,656	30%	22%
2000	136,163	18,991	117,198	39,778	43%	34%
2001	172,648	18,444	154,228	38,785	33%	25%
2002	128,682	19,068	109,617	25,744	35%	23%
2003	159,888	22,937	137,031	49,882	45%	36%
2004	164,996	22,015	142,995	20,106	26%	14%
2005	219,701	21,263	198,474	53,566	34%	27%
2006	139,936	18,942	120,995	23,724	30%	20%
2007	211,523	19,601	191,933	57,682	37%	30%
2008	144,910	12,898	132,019	44,921	40%	34%
2009	160,856	13,789	147,072	28,139	26%	19%
2010	169,266	10,464	158,807	77,324	52%	49%
2011	175,962	12,154	163,814	32,210	25%	20%
2012	126,075	7,327	118,757	36,903	35%	31%
2013	280,315	9,480	270,835	97,091	38%	36%
2014	156,676	7,466	149,210	50,809	37%	34%

Source: Commercial harvest: 1977–2013 ADF&G fish ticket database; 2014 ADF&G website (Accessed February 12, 2015)

http://www.adfg.alaska.gov/static/fishing/PDFs/commercial/table_2014_commercial_salmon_harvest_values.pdf.

^a Total commercial harvest by all commercial gear types, including fish harvested for cost recovery.

^b CCPH = commercial common property harvest

Table 32.—Summary of statewide commercial harvest of hatchery-produced salmon from Alaska's fisheries enhancement projects, in thousands of fish.

Year	Chinook	Sockeye	Coho	Pink	Chum	Total
1977	-	0	-	126	-	126
1978	0	1	-	114	2	117
1979	0	301	-	532	2	835
1980	4	638	0	1,406	9	2,057
1981	2	362	49	3,904	40	4,357
1982	4	28	85	6,067	74	6,257
1983	2	158	82	5,274	213	5,730
1984	5	239	139	4,839	1,552	6,774
1985	10	449	243	12,891	1,123	14,717
1986	15	884	443	7,630	1,392	10,364
1987	25	622	204	19,819	1,438	22,109
1988	31	1,034	144	12,099	2,007	15,314
1989	37	1,343	324	28,411	962	31,077
1990	70	2,858	765	39,580	1,487	44,760
1991	79	3,665	1,059	36,247	1,519	42,569
1992	62	2,727	1,235	12,190	2,398	18,613
1993	60	3,893	773	18,023	5,927	28,676
1994	46	2,619	1,120	38,814	8,005	50,604
1995	81	1,075	1,085	22,715	8,691	33,647
1996	92	2,317	1,096	26,179	14,155	43,838
1997	71	2,500	808	30,983	11,823	46,184
1998	40	1,882	1,087	34,564	12,629	50,202
1999	52	2,566	1,278	47,193	14,152	65,241
2000	97	1,521	1,252	38,191	17,685	58,745
2001	112	2,500	1,334	44,616	8,360	56,922
2002	95	2,750	1,705	28,443	11,816	44,809
2003	89	3,695	1,102	55,072	12,781	72,739
2004	127	2,671	919	28,309	10,081	42,107
2005	81	1,972	1,114	64,950	6,676	74,794
2006	58	2,137	1,075	24,774	14,621	42,664
2007	87	2,033	890	62,678	11,584	77,272
2008	100	1,510	1,200	42,076	12,927	57,813
2009	86	1,534	932	27,484	11,887	41,923
2010	74	2,061	1,112	72,485	12,053	87,784
2011	103	2,677	1,149	29,877	10,658	44,464
2012	73	2,304	770	26,699	14,375	44,222
2013	96	1,801	1,518	88,943	14,227	106,585
2014	66	2,296	1,768	47,264	6,882	58,276
Total	2,131	65,624	29,858	1,091,462	266,210	1,455,286

Table 33.—Summary of commercial harvest of hatchery-produced salmon from Southeast Alaska fisheries enhancement projects, in thousands of fish.

Year	Chinook	Sockeye	Coho	Pink	Chum	Total
1977	0	0	0	108	0	108
1978	0	0	0	0	2	2
1979	0	0	0	34	2	36
1980	4	0	0	1	6	11
1981	2	0	48	139	3	192
1982	3	0	83	17	65	168
1983	1	0	80	181	200	463
1984	5	0	138	236	1,467	1,846
1985	10	0	228	912	933	2,083
1986	14	19	427	116	1,095	1,671
1987	24	36	155	1,370	1,296	2,881
1988	29	20	52	125	1,290	1,515
1989	35	37	93	859	601	1,625
1990	68	114	527	1,320	786	2,815
1991	78	112	901	1,774	1,191	4,057
1992	58	208	1,028	3,515	2,114	6,924
1993	55	364	691	689	4,672	6,470
1994	44	172	930	5,787	6,966	13,898
1995	78	211	876	1,530	7,645	10,341
1996	89	482	847	2,010	12,041	15,469
1997	69	353	620	2,448	9,932	13,421
1998	38	237	873	2,236	11,559	14,943
1999	51	135	1,075	4,088	11,394	16,743
2000	96	260	625	439	12,690	14,110
2001	112	392	1,000	2,347	5,643	9,494
2002	94	120	1,447	1,924	5,615	9,200
2003	88	119	885	930	8,964	10,985
2004	125	557	726	1,464	8,096	10,969
2005	80	240	734	1,582	4,665	7,301
2006	58	379	565	528	12,409	13,939
2007	86	189	598	1,219	7,803	9,895
2008	100	114	781	174	8,091	9,260
2009	86	137	738	1,318	8,809	11,087
2010	74	91	960	1,199	7,793	10,116
2011	103	174	872	1,340	8,687	11,176
2012	73	219	711	341	10,760	12,103
2013	96	179	1,207	2,501	10,489	14,472
2014	66	218	1,357	512	5,733	7,886
Total	2,092	5,888	22,876	47,311	201,507	279,675

Table 34.–Summary of commercial harvest of hatchery-produced salmon from Prince William Sound fisheries enhancement projects, in thousands of fish.

Year	Chinook	Sockeye	Coho	Pink	Chum	Total
1977	0	0	0	18	0	18
1978	0	1	0	114	0	115
1979	0	1	0	499	0	500
1980	0	0	0	1,406	3	1,409
1981	0	4	0	2,139	37	2,179
1982	0	4	0	5,679	2	5,684
1983	0	7	0	4,385	13	4,405
1984	0	5	0	4,037	83	4,126
1985	0	32	0	8,068	64	8,164
1986	0	30	7	6,793	199	7,029
1987	0	47	27	17,305	127	17,506
1988	0	93	66	10,533	525	11,218
1989	0	176	202	20,174	341	20,894
1990	0	74	218	37,553	643	38,489
1991	0	480	129	32,871	250	33,731
1992	1	644	192	7,479	238	8,554
1993	2	503	44	4,418	1,177	6,144
1994	1	300	117	29,409	940	30,767
1995	1	198	139	14,247	663	15,247
1996	1	805	167	22,752	2,076	25,800
1997	1	1,379	63	24,686	1,879	28,008
1998	1	768	46	24,761	1,032	26,607
1999	0	440	80	37,968	2,617	41,106
2000	0	490	479	33,040	4,691	38,700
2001	0	973	175	28,467	2,500	32,114
2002	0	1,164	36	18,771	6,112	26,082
2003	0	1,572	77	46,935	3,351	51,935
2004	0	695	47	20,422	1,745	22,909
2005	0	518	228	47,621	1,919	50,285
2006	0	1,183	341	19,836	2,034	23,394
2007	0	1,235	166	53,461	3,560	58,422
2008	0	857	298	39,783	4,743	45,681
2009	0	949	39	17,226	2,978	21,192
2010	0	1,511	38	68,047	4,069	73,665
2011	0	1,757	207	26,362	1,650	29,976
2012	0	1,623	11	23,390	3,397	28,421
2013	0	1,042	258	74,616	3,641	79,557
2014	0	1,494	181	40,922	1,103	43,699
Total	9	23,049	4,078	876,193	60,401	963,731

Table 35.–Summary of commercial harvest of hatchery-produced salmon from Cook Inlet fisheries enhancement projects, in thousands of fish.

Year	Chinook	Sockeye	Coho	Pink	Chum	Total
1978	0	0	0	0	0	0
1979	0	300	0	0	0	300
1980	0	638	0	0	0	638
1981	0	359	1	963	0	1,323
1982	0	24	2	181	7	215
1983	1	151	2	577	0	732
1984	0	231	1	230	1	464
1985	0	415	4	464	2	885
1986	0	809	7	380	23	1,219
1987	1	521	22	85	5	634
1988	1	677	22	836	8	1,545
1989	2	330	29	878	5	1,243
1990	2	379	15	167	49	612
1991	1	586	19	205	26	835
1992	2	388	11	374	3	777
1993	3	497	23	638	38	1,198
1994	1	257	27	1,563	75	1,923
1995	2	494	19	2,424	111	3,050
1996	2	520	25	443	23	1,013
1997	1	359	16	2,637	2	3,016
1998	1	193	19	1,295	0	1,507
1999	1	1,151	7	1,080	0	2,239
2000	1	311	15	1,052	0	1,379
2001	1	724	7	530	0	1,262
2002	1	840	13	1,051	0	1,906
2003	1	1,205	6	619	0	1,831
2004	2	1,142	8	2,461	0	3,613
2005	1	999	2	2,143	0	3,145
2006	1	460	1	252	0	713
2007	0	402	0	113	0	516
2008	0	223	0	0	0	223
2009	0	202	0	0	0	202
2010	0	148	0	0	0	148
2011	0	254	0	0	0	254
2012	0	139	0	0	0	139
2013	0	118	0	67	0	185
2014	0	209	0	54	0	264
Total	28	16,657	320	23,763	378	41,146

Table 36.—Summary of commercial harvest of hatchery-produced salmon from Kodiak fisheries enhancement projects, in thousands of fish.

Year	Chinook	Sockeye	Coho	Pink	Chum	Total
1981	0	0	0	663	0	663
1982	0	0	0	190	0	190
1983	0	0	0	130	0	130
1984	0	2	0	336	0	338
1985	0	2	12	3,448	121	3,583
1986	0	27	1	342	70	439
1987	0	17	0	1,060	4	1,081
1988	0	244	2	605	151	1,003
1989	0	800	0	6,500	0	7,300
1990	0	2,291	5	540	4	2,840
1991	0	2,487	10	1,398	32	3,926
1992	0	1,487	5	822	4	2,317
1993	0	2,529	16	12,279	35	14,858
1994	0	1,891	47	2,055	5	3,997
1995	0	172	50	4,514	215	4,951
1996	0	510	57	974	14	1,556
1997	0	409	109	1,211	11	1,740
1998	0	684	150	6,272	38	7,144
1999	0	840	116	4,057	141	5,153
2000	0	460	133	3,660	304	4,557
2001	0	412	152	13,272	217	14,052
2002	0	626	209	6,697	89	7,620
2003	0	799	135	6,588	466	7,989
2004	0	277	138	3,962	240	4,617
2005	0	215	152	13,604	92	14,063
2006	0	115	168	4,158	178	4,619
2007	0	208	126	7,885	221	8,439
2008	0	316	120	2,118	93	2,648
2009	0	246	155	8,940	101	9,441
2010	0	311	114	3,239	191	3,854
2011	0	492	70	2,175	321	3,057
2012	0	324	48	2,968	219	3,559
2013	0	462	53	11,759	97	12,371
2014	0	375	231	5,776	46	6,427
Total	0	20,029	2,583	144,195	3,717	170,524

Table 37.—Actively operated Alaska hatcheries contact information, 2014.

^a	Agency	Address	City, State, Zip	Office phone	Hatchery	Hatchery Manager	Director	Email
Southern Southeast								
R	SSRAA	14 Borch Street	Ketchikan, AK 99901	(907) 225-9605 (907) 254-1242 (907) 650-7077 (907) 225-8790 (907) 225-2635	Burnett Inlet Crystal Lake ^b Neets Bay Whitman Lake	Steve Reid Loren Thompson Matt Allen Jay Creasy	John Burke	johnb@ssraa.org burnettinlet@starband.net loren.crystallake@gmail.com neetsbay@ssraa.org whitman@kpunet.net
N	POWHA	PO Box 554	Craig, AK 99921	(907) 755-2231	Klawock River ^b Port Saint Nicholas	Jeff Lundberg Jeff Lundberg	Jeff Lundberg	powha@hughes.net jlundberg@hughes.net jlundberg@hughes.net
F	MIC	PO Box 8	Metlakatla, AK 99929	(907) 886-3150	Tamgas Creek	Steve Leask		tchsteve@hughes.net
Northern Southeast								
R	NSRAA	1308 Sawmill Cr. Rd	Sitka, AK 99835	(907) 747-6850 (907) 766-3110 (907) 725-0995 (907) 738-1438 (907) 747-5863	Haines Projects Hidden Falls ^b Medvejie Creek Sawmill Creek	Benji Burbank Adam Olson Angie Bowers Angie Bowers	Steve Reifenhstuh	steve_reifenhstuh@nsraa.org benji_burbank@nsraa.org adam_olson@nsraa.org angie_bowers@nsraa.org angie_bowers@nsraa.org
N	AKI	PO Box 21990	Juneau, AK 99802	(907) 586-3443 (907) 568-2228	Port Armstrong	Ben Contag	Bart Watson	aki@ak.net portarmstrong@starband.net
N	DIPAC	2697 Channel Dr.	Juneau, AK 99801	(907) 463-5114 (907) 463-5114 (907) 463-5115	Macaulay Salmon Snettisham ^b	Charlie Currit Kevin Steck	Eric Prestegard	Eric_prestegard@dipac.net charlie_currit@dipac.net kevin_steck@dipac.net
N	KNFC	PO Box 523	Kake, AK 99830	(907) 785-6460	Gunnuk Creek	John Oliva	John Oliva	gunnukcreek@hughes.net
N	SSSC	834 Lincoln St	Sitka, AK 99835	(907) 747-8878	Sheldon Jackson Little Port Walter ^c	Lon Garrison Andrew Gray	Lisa Busch	lbusch@sitkascience.org lgarrison@sitkascience.org
F	NMFS	17109 Lena Point Loop Rd	Juneau, AK 99801	(907) 789-6047 (907) 789-6618	Auke Creek ^c	Andrew Gray John Joyce		andrew.gray@noaa.gov john.joyce@noaa.gov
Prince William Sound								
R	PWSAC	PO Box 1110	Cordova, AK 99574	(907) 424-7511	AF Koernig Cannery Creek ^b Gulkana ^b Main Bay ^b W Noerenberg	Jason Woodhull Chris Mitchell (acting) Gary Martinek Jason Myhrer Klint Hischke	Dave Reggiani	dave.pwsac@ak.net afk.pwsac@ak.net cch.pwsac@ak.net gkh.cvinternet@ak.net mbh.pwsac@ak.net wnh.pwsac@ak.net

-continued-

Table 37.–Page 2 of 2.

^a	Agency	Address	City, State, Zip	Office phone	Hatchery	Hatchery Manager	Director	Email
Prince William Sound (cont.)								
N	VFDA	PO Box 125	Valdez, AK 99686	(907) 835-4874 (907) 835-1329	Solomon Gulch	Rob Unger	Mike Wells	vfdamike@valdezfisheries.com sghatchery@cvinternet.net
Cook Inlet								
R	CIAA	40610 Kalifornsky Beach Rd	Kenai, AK 99611	(907) 283-5761 (907) 288-3688 (866) 309-0640 (907) 283-5761	Trail Lakes ^b Tutka Bay Lagoon ^b Port Graham	Tom Prochazka Dean Day Mike Smimmo	Gary Fandrei	gfandrei@ciaaet.org tprochazka_tlh@ciaaet.org dday_tblh@ciaaet.org msmimmo_pgh@ciaaet.org
Kodiak								
R	KRAA	104 Center Street Suite 205	Kodiak, AK 99615	(907) 486-6555 (907) 743-0617 (907) 486-4730	 Kitoi Bay ^b Pillar Creek ^b	 Andrew Aro Alan Seale	Tina Fairbanks	kraa.fairbanks@gci.net kraa@gci.net kitoi@gci.net pch@gci.net
S	ADF&G- Division of Sport Fish						Jeff Milton	jeffery.milton@alaska.gov
		PO Box 5267	Anchorage, AK 99505	(907) 428-1348	Fort Richardson			
		941 N. Reeve Blvd.	Anchorage, AK 99501	(907) 269-0296	WJ Hernandez	Andrea Tesch		andrea.tesch@alaska.gov
		1150 Wilbur Street	Fairbanks, AK 99701	(907) 451-2661	Ruth Burnett	Gary George		gary.george@alaska.gov

^a (R) Regional Aquaculture Association, Private Nonprofit, (N) Non-Regional Aquaculture Association, Private Nonprofit, (F) Federal, (S) State.

^b State owned facility contracted to the private sector to operate.

^c Hatchery research facility.

Table 38.—Active Alaska hatcheries and hatchery permits, 2014.

Area	Type Code	Agency	Corporate name	Hatchery	PNP Permit #	PNP permit issued	Species permitted	Web Site
Southern Southeast								
R	SSRAA		Southern Southeast Regional Aquaculture Assoc.	Burnett Inlet	40	9/30/1997	sockeye, coho, chum	www.ssraa.org
				Crystal Lake ^a			Chinook, coho	
				Neets Bay	19	6/17/1983	chum, coho, Chinook	
				Whitman Lake	8	3/9/1978	chum, coho, Chinook	
N	POWHA		Prince of Wales Hatchery Association	Klawock River ^a	38	2/19/1996	coho, sockeye, steelhead	www.powha.org
				Port Saint Nicholas	43	6/25/2004	Chinook, chum	
F	MIC		Tamgas Creek Hatchery	Tamgas Creek ^b			chum, coho, Chinook, sockeye	
Northern Southeast								
R	NSRAA		Northern Southeast Regional Aquaculture Assoc.	Haines Projects	34	4/29/1992	chum, sockeye	www.nsraa.org
				Hidden Falls ^a	28	6/22/1988	chum, Chinook, coho	
				Medvejie Creek	16	8/17/1981	chum, coho, Chinook, pink	
				Sawmill Creek	44	3/11/2007	Coho, chum	
N	AKI		Armstrong-Keta, Inc.	Port Armstrong	13	2/23/1981	pink, chum, Chinook, coho	www.armstrongketa.org
N	DIPAC		Douglas Island Pink and Chum, Inc	Macaulay	25	6/3/1987	chum, pink, coho, Chinook	www.dipac.net
				Sheep Creek	11	9/19/1979	chum, pink, coho	
				Snettisham ^a	39	7/15/1996	sockeye	
N	KNFC		Kake Nonprofit Fisheries Corp	Gunnuk Creek	7	4/1/1977	pink, chum, coho	www.gunnukcreekhatchery.org
N	SSSC		Sitka Sound Science Center	Sheldon Jackson	45	4/13/2011	pink, chum, coho	www.sitkasoundsciencecenter.org
F	NMFS		National Marine Fisheries Service	Little Port Walter ^c	NA		Chinook, pink, steelhead	www.afsc.noaa.gov/ABL/MSI/msi_lpw.htm
				Auke Creek ^c	NA		pink, chum, sockeye, coho	www.afsc.noaa.gov/ABL/MSI/msi_acs.htm

-continued-

Table 38.—Page 2 of 2.

Area	Type Code			PNP	PNP		
	Agency	Corporate name	Hatchery	Permit #	permit issued	Species permitted	Web Site
Prince William Sound							
R	PWSAC	Prince William Sound Aquaculture Association	AF Koernig	2	9/29/1975	pink, chum	www.pwsac.com
			Cannery Creek ^a	26	6/22/1988	pink	
			Gulkana ^a	42	7/5/2000	sockeye	
			Main Bay ^a	31	4/17/2001	sockeye	
			W Noerenberg	20	6/17/1983	pink, chum, Chinook, coho	
N	VFDA	Valdez Fisheries Development Association	Solomon Gulch	15	6/26/1981	pink, coho, Chinook	
Cook Inlet							
R	CIAA	Cook Inlet Aquaculture Association	Eklutna	17	2/5/1982	sockeye, coho	www.ciaa.net
			Trail Lakes ^a	27	6/22/1988	sockeye, coho, Chinook	
			Tutka Bay Lagoon ^a	32	1/3/1994	pink, sockeye	
			Port Graham	46	1/14/2014	pink	
S	ADF&G	Alaska Department of Fish and Game	WJ Hernandez ^b	NA		char, grayling, rainbow trout, Chinook, coho	www.adfg.alaska.gov
Kodiak							
R	KRAA	Kodiak Regional Aquaculture Association	Kitoi Bay ^a	29	7/5/1988	pink, chum, coho, sockeye	www.kraakodiak.org
			Pillar Creek ^a	41	5/1/1998	sockeye, coho, Chinook, rainbow trout	
Arctic-Yukon-Kuskokwim							
S	ADF&G	Alaska Department of Fish and Game	Ruth Burnett	NA		char, grayling, rainbow trout, Chinook, coho	www.adfg.alaska.gov

Note: R=Regional Aquaculture Association PNP hatchery, N=Non-Regional Association PNP hatchery, F=Federal/Bureau of Indian Affairs hatchery, S=State hatchery

^a State-owned hatchery contracted to private sector.

^b Federally recognized tribal reservation hatchery.

^c Hatchery research facility.

Table 39.—Permitted capacity of Alaska private nonprofit hatcheries, in millions of eggs, 2014.

Region/Area	Corp.	Hatchery	Chinook	Sockeye	Coho	Pink	Chum	Other	Total
Southeast									
Southern Southeast									
	SSRAA	Burnett Inlet		2.70	4.50		37.00		44.20
		Crystal Lake ^a	4.00		0.25				4.25
		Neets Bay	2.00		5.00		102.70		109.70
		Whitman Lake	2.10		7.00		44.30		53.40
	KTHC	Deer Mountain	0.13		0.38			0.05	0.56
	POWHA	Klawock River		5.00	5.00			0.05	10.05
		Port Saint Nicholas	0.77				8.0		8.77
Southern Southeast Total			9.00	7.70	22.13	0.00	192.00	0.10	230.93
Northern Southeast									
	NSRAA	Haines projects		2.00			4.80		6.80
		Hidden Falls	3.80		7.70		101.00		112.50
		Medvejie Creek	5.20		3.30	0.30	77.00		85.80
		Sawmill Creek			4.33		30.00		34.33
	AKI	Port Armstrong ^b	2.00		5.00	105.00	30.00		142.00
	DIPAC	Macaulay	1.25		1.50	50.00	125.00		177.75
		Sheep Creek			0.15	0.00			0.15
		Snettisham		33.50					33.50
	KNFC	Gunnuk Creek			0.50	20.00	65.00		85.50
	SSSC	Sheldon Jackson			0.25	3.00	12.00		15.25
Northern Southeast Total			12.25	35.50	22.73	178.30	444.80	0.00	693.58
Southeast Totals			16.65	43.20	44.86	178.30	636.80	0.10	924.51
Southcentral									
Prince William Sound									
	PWSAC	Armin F Koernig				162.00	34.00		196.00
		Cannery Creek				187.00			187.00
		Gulkana		36.75					36.75
		Main Bay		12.40					12.40
		Wally Noerenberg	4.00		4.00	148.00	131.00		287.00
	VFDA	Solomon Gulch	0.30		2.00	230.00			232.30
Prince William Sound Totals			4.30	49.15	6.00	727.00	165.00	0.00	951.45
Cook Inlet									
	CIAA	Eklutna		18.00	0.16				18.16
		Trail Lakes	4.00	30.00	6.00				40.00
		Tutka Bay		0.66		125.00			125.66
	PGHC	Port Graham				125.00			125.00
Cook Inlet Totals			4.00	48.66	6.16	250.00	0.00	0.00	308.82
Southcentral Totals			8.30	97.81	12.16	977.00	165.00	0.00	1,260.27
Kodiak/Westward									
Kodiak									
	KRAA	Kitoi Bay		0.85	2.30	215.00	36.00		254.15
		Pillar Creek	0.45	20.00	0.50			0.09	21.04
Kodiak/Westward Totals			0.45	20.85	2.80	215.00	36.00	0.09	275.19
Statewide Total			30.00	616.86	59.82	1,370.630	837.80	0.19	2,459.97

Note: Some figures may not total exactly due to rounding.

^a Crystal Lake Hatchery is a state-owned facility under contract to SSRAA; it does not have a PNP permit or permitted capacity; operating under the Statewide Sport Fish Stocking Plan.

^b Port Armstrong can take up to 5.0 million Chinook and coho salmon eggs in combination, not to exceed 2.0 million Chinook.

Table 40.—Alaska salmon fisheries enhancement program timeline of events.

Year	Event	No. of state operated hatcheries	No. of PNP owned or operated hatcheries	No. of federal hatcheries
1934	Federal research station Little Port Walter constructed			1
1950	Federal hatchery at Auke Creek constructed			2
1953	1 territorial hatchery constructed at Kitoi Bay	1		
1954	1 territorial hatchery constructed at Deer Mountain	2		
1958	1 territorial hatchery constructed at Fort Richardson	3		
1959	Statehood. Alaska becomes the 49th US state.			
1965	1 state hatchery constructed at Fire Lake	4		
1969	1 state hatchery constructed at Crystal Lake	5		
1971	Fisheries Rehabilitation, Enhancement and Development Division created by Legislature			
1973	2 state hatcheries constructed (Crooked Creek and Gulkana)	7		
	State enhancement projects at Starrigavan and Halibut Cove started			
	Limited Entry law enacted, creating fishery limitations for the purpose of conservation.			
1974	2 state hatcheries constructed (Beaver Falls and East Creek)	9		
	Legislature authorizes permitting for PNP corporations to operate hatcheries.			
1975	4 PNP permits issued [Perry Island (#1), Port San Juan [renamed Armin F. Koernig Hatchery in 1985] (#2), Sheldon Jackson (#3), and Sandy Bay (#4)]		4	
	2 state hatcheries constructed (Big Lake and Tutka Bay Lagoon)	11		
1976	AS 16.10.375 passed, designating regions for regional planning teams and enhancing salmon			
	1 state hatchery constructed at Elmendorf	12		
	2 PNP permits issued [Burnett Inlet (#5) and Kowee Creek (#6)]		6	
1977	1 PNP permit issued to Gunnuk Creek (#7)		7	
	2 state hatcheries constructed (Klawock River and Russell Creek)	14		
	State enhancement project at Karluk Lake started			
1978	1 PNP permit issued to Whitman Lake (#8)		8	
	2 state hatcheries constructed (Cannery Creek and Hidden Falls)	16		
1979	3 PNP permits issued [Salmon Creek (#9), Meyers Chuck (#10), Sheep Creek (#11)]		11	
	1 state hatchery constructed (Snettisham)	17		
	1 state hatchery closed (Fire Lake)	16		
1980	1 PNP permit issued to Burro Creek (#12)		12	
	2 state hatcheries constructed (Clear and Main Bay)	18		
	1 hatchery at Tamgas Creek constructed (Metlakatla Indian Community/Bureau of Indian Affairs)			3

-continued-

Table 40.—Page 2 of 3.

Year	Event	No. of state operated hatcheries	No. of PNP owned or operated hatcheries	No. of federal hatcheries
1981	1 state hatchery closed (East Creek)	17	12	3
	2 state hatcheries constructed (Sikusuilag and Trail Lakes)	19		
	1 PNP hatchery permit rescinded & new permit issued to new operator at Salmon Creek [#9, new #14]		12	
	3 PNP permits issued [Port Armstrong (#13), Solomon Gulch (#15), Medvejie Creek (#16)]		15	
1982	2 PNP permits issued [Eklutna (#17) and Favorite Bay (#18)]		17	
1983	3 PNP permits issued [Neets Bay (#19), Esther Island [renamed Wally Noerenberg Hatchery in 1990] (#20), Crittenden Creek (#22)]		20	
	1 state hatchery completed (Broodstock Development Center)	20		
1984	1 PNP permit issued to Santa Anna (#21)		21	
1985	1 PNP permit issued to Port Camden (#23)		22	
1986	1 PNP permit issued to [Beaver Falls (#24) jointly operated ADF&G/SSRAA]	19	23	
1987	1 PNP permit issued to Gastineau [renamed Macaulay Salmon Hatchery in 2000 (#25)]		24	
1988	Aquatic Farm Act signed; statute passes allowing contracting of hatchery operations			
	4 state hatcheries contracted to private sector (Cannery Creek, Trail Lakes, Hidden Falls, Kitoi Bay)	15		
	4 PNP permits issued [Cannery Creek (#26), Trail Lakes (#27), Hidden Falls (#28), Kitoi Bay (#29)]		28	
	1 state hatchery constructed (Pillar Creek)	16		
	1 PNP permit rescinded [Sandy Bay PNP (#4)]		27	
	1 PNP permit rescinded [Salmon Creek (#14)]		26	
1990	CSHB432 becomes law prohibiting finfish farming in Alaska			
	1 PNP permit issued to Bell Island (#30)		27	
1991	5 state hatcheries contracted to private sector [Beaver Falls (#24)-already operated by PNP , Main Bay, Tutka, Pillar Creek, Gulkana]	12	31	
	2 PNP permits issued [Main Bay (#31), Tutka (#32)]			
	Portions of 6 state hatcheries paid for by private or federal funds			
1992	1 state hatchery closed (Russell Creek)	11		
	2 PNP permits issued [Port Graham (#33), Haines projects (#34)]		33	
	1 PNP permit revoked [Meyers Chuck (#10)]		32	
	Fisheries Rehabilitation, Enhancement and Development Division merged with the Commercial Fisheries Division to form the Commercial Fisheries Management and Development Division			
1993	3 state hatcheries transferred from Commercial Fisheries Management and Development to Sport Fish Division (Broodstock Development Center, Elmendorf, and Ft. Richardson)	11	32	3

-continued-

Table 40.–Page 3 of 3.

Year	Event	No. of state operated hatcheries	No. of PNP owned or operated hatcheries	No. of federal hatcheries
	2 state hatcheries contracted to private sector (Crooked Creek and Klawock River)	9	34	
	1 state hatchery closed (Big Lake)	8		
1994	1 state hatchery conveyed (Deer Mountain)	7		
	3 PNP permits issued [Crooked Creek (#35), Klawock River (#36), Deer Mountain (#37)]		35	
	Ft. Richardson Hatchery merged with Broodstock Development Center	6		
1995	1 PNP hatchery permit rescinded and new permit issued to new operator at Klawock River (#36, new #38)		35	
	1 state hatchery transferred from Division of Commercial Fisheries Management & Development to Division of Sport Fish (Crystal Lake)			
	1 state hatchery closed (Sikusuilaq)	5		
1996	1 state hatchery contracted to private sector [Snettisham (#39)]	4	36	
	1 state hatchery transferred from Commercial Fisheries Management and Development Division to Sport Fish Division (Clear)			
	3 PNP permits revoked [Crittenden Creek (#22), Santa Anna (#21), and Favorite Bay (#18)]		33	
1997	1 state hatchery closed (Clear)	3		
	2 state contracted (PNP) hatcheries closed [Beaver Falls (#24), Crooked Creek (#35)]		31	
	1 PNP hatchery rescinded & new permit issued to new operator at Burnett Inlet (#5, new #40)		31	
1998	1 PNP hatchery permit issued [Pillar Creek (#41), already operating under contract]			
2000	1 state hatchery contracted to private sector [Crystal Lake Hatchery (PNP permit not issued)]	2	32	
	1 PNP hatchery permit rescinded [Port Camden (# 23)]		31	
	1 PNP hatchery permit issued [Gulkana (#42), already operating under contract]			
2001	1 PNP hatchery permit rescinded [Kowee Creek (#6)]		30	
2004	1 PNP hatchery permit issued [Port Saint Nicholas (#43)]		31	
2007	1 PNP hatchery permit issued [Sawmill Creek (#44)]		32	
2008	1 PNP hatchery permit rescinded [Burro Creek (#12)]		31	
2011	1 PNP hatchery permit rescinded & new permit issued to new operator at Sheldon Jackson (#3, new #45)		31	
	1 state hatchery closed (Elmendorf), 1 state hatchery opened (William Jack Hernandez)	2		
2012	1 state hatchery opened (Ruth Burnett)	3		
	1 PNP hatchery permit rescinded & a new permit issued to new operator at Port Graham (#33, new #46)		31	
2014	1 state hatchery closed (Fort Richardson)	2	31	3

Notes: PNP hatcheries Perry Island and Bell Island are inactive permits. PNP hatcheries Eklutna and Sheep Creek are not operating, but are active permits. PNP hatcheries Deer Mountain and Gunnuk Creek are not actively operating, but returns are projected in 2015. There are 11 state-owned hatcheries that are contracted to PNP operators. Of the 3 federal facilities, 2 are hatchery research facilities; 1 facility is a recognized tribal hatchery.