

# **Participation, Effort, and Harvest in the Sport Fish Business/Guide Licensing and Logbook Programs, 2014**



by

**Bob Powers**

and

**Dora Sigurdsson**

January 2016

---

Alaska Department of Fish and Game

Divisions of Sport Fish and Commercial Fisheries



## Symbols and Abbreviations

The following symbols and abbreviations, and others approved for the Système International d'Unités (SI), are used without definition in the following reports by the Divisions of Sport Fish and of Commercial Fisheries: Fishery Manuscripts, Fishery Data Series Reports, Fishery Management Reports, and Special Publications. All others, including deviations from definitions listed below, are noted in the text at first mention, as well as in the titles or footnotes of tables, and in figure or figure captions.

Weights and measures (metric)		General		Mathematics, statistics		
Centimeter	cm	Alaska Administrative Code	AAC	all standard mathematical signs, symbols and abbreviations		
deciliter	dL	all commonly accepted abbreviations	e.g., Mr., Mrs., AM, PM, etc.	alternate hypothesis	H <sub>A</sub>	
gram	g	all commonly accepted professional titles	e.g., Dr., Ph.D., R.N., etc.	base of natural logarithm	e	
hectare	ha			catch per unit effort	CPUE	
kilogram	kg			coefficient of variation	CV	
kilometer	km	at	@	common test statistics	(F, t, $\chi^2$ , etc.)	
liter	L			confidence interval	CI	
meter	m			correlation coefficient (multiple)	R	
milliliter	mL	compass directions:		correlation coefficient (simple)	r	
millimeter	mm	east	E	covariance	cov	
Weights and measures (English)		north	N	degree (angular )	°	
	cubic feet per second	ft <sup>3</sup> /s	south	S	degrees of freedom	df
	foot	ft	west	W	expected value	E
	gallon	gal	copyright	©	greater than	>
	inch	in	corporate suffixes:		greater than or equal to	≥
	mile	mi	Company	Co.	harvest per unit effort	HPUE
	nautical mile	nmi	Corporation	Corp.	less than	<
	ounce	oz	Incorporated	Inc.	less than or equal to	≤
	pound	lb	Limited	Ltd.	logarithm (natural)	ln
	quart	qt	District of Columbia	D.C.	logarithm (base 10)	log
yard	yd	et alii (and others)	et al.	logarithm (specify base)	log <sub>2</sub> , etc.	
Time and temperature		et cetera (and so forth)	etc.	minute (angular)	'	
		exempli gratia		not significant	NS	
	day	d	(for example)	e.g.	null hypothesis	H <sub>0</sub>
	degrees Celsius	°C	Federal Information Code	FIC	percent	%
	degrees Fahrenheit	°F	id est (that is)	i.e.	probability	P
	degrees kelvin	K	latitude or longitude	lat or long	probability of a type I error (rejection of the null hypothesis when true)	α
	hour	h	monetary symbols (U.S.)	\$, ¢	probability of a type II error (acceptance of the null hypothesis when false)	β
	minute	min	months (tables and figures): first three letters	Jan.,...,Dec	second (angular)	"
	second	s	registered trademark	®	standard deviation	SD
	Physics and chemistry		trademark	™	standard error	SE
all atomic symbols			United States (adjective)	U.S.	variance	
alternating current		AC	United States of America (noun)	USA	population sample	Var
ampere		A	U.S.C.	United States Code	var	
calorie		cal	U.S. state	use two-letter abbreviations (e.g., AK, WA)		
direct current		DC				
hertz		Hz				
horsepower		hp				
hydrogen ion activity (negative log of)		pH				
parts per million		ppm				
parts per thousand	ppt, ‰					
volts	V					
watts	W					

***FISHERY DATA SERIES NO. 16-02***

**PARTICIPATION, EFFORT, AND HARVEST IN THE SPORT FISH  
BUSINESS/GUIDE LICENSING AND LOGBOOK PROGRAMS, 2014**

by

Bob Powers

and

Dora Sigurdsson

Alaska Department of Fish and Game  
Division of Sport Fish, Research and Technical Services  
333 Raspberry Road, Anchorage, Alaska, 99518-1599

January 2016

ADF&G Fishery Data Series was established in 1987 for the publication of Division of Sport Fish technically oriented results for a single project or group of closely related projects, and in 2004 became a joint divisional series with the Division of Commercial Fisheries. Fishery Data Series reports are intended for fishery and other technical professionals and are available through the Alaska State Library and on the Internet: <http://www.adfg.alaska.gov/sf/publications/>. This publication has undergone editorial and peer review.

*Bob Powers and Dora Sigurdsson,  
Alaska Department of Fish and Game, Division of Sport Fish, Research and Technical Services,  
333 Raspberry Road, Anchorage, AK 99518-1599, USA*

*This document should be cited as follows:*

*Powers, B., and D. Sigurdsson. 2016. Participation, effort, and harvest in the sport fish business/guide licensing and logbook programs, 2014. Alaska Department of Fish and Game, Fishery Data Series No. 16-02, Anchorage.*

The Alaska Department of Fish and Game (ADF&G) administers all programs and activities free from discrimination based on race, color, national origin, age, sex, religion, marital status, pregnancy, parenthood, or disability. The department administers all programs and activities in compliance with Title VI of the Civil Rights Act of 1964, Section 504 of the Rehabilitation Act of 1973, Title II of the Americans with Disabilities Act (ADA) of 1990, the Age Discrimination Act of 1975, and Title IX of the Education Amendments of 1972.

**If you believe you have been discriminated against in any program, activity, or facility please write:**

ADF&G ADA Coordinator, P.O. Box 115526, Juneau, AK 99811-5526

U.S. Fish and Wildlife Service, 4401 N. Fairfax Drive, MS 2042, Arlington, VA 22203

Office of Equal Opportunity, U.S. Department of the Interior, 1849 C Street NW MS 5230, Washington DC 20240

**The department's ADA Coordinator can be reached via phone at the following numbers:**

(VOICE) 907-465-6077, (Statewide Telecommunication Device for the Deaf) 1-800-478-3648,

(Juneau TDD) 907-465-3646, or (FAX) 907-465-6078

**For information on alternative formats and questions on this publication, please contact:**

ADF&G Division of Sport Fish, Research and Technical Services, 333 Raspberry Road, Anchorage AK 99518 (907) 267-2375.

# TABLE OF CONTENTS

	Page
LIST OF TABLES.....	ii
LIST OF FIGURES .....	ii
LIST OF APPENDICES .....	iii
ABSTRACT .....	1
BACKGROUND .....	1
Guide and Business Registration and Licensing.....	1
Logbooks .....	2
Vessel Registration .....	5
Verification of Logbook Harvest Data .....	5
METHODS.....	5
Guide and Business Licensing.....	5
Logbook Data Collection.....	6
Saltwater Logbook.....	7
Freshwater Logbook .....	8
Vessel Registration .....	9
Logbook Outreach, Validation, and Verification .....	9
Outreach.....	9
Validation .....	10
RESULTS.....	12
Guide and Business Licensing.....	12
Vessels.....	15
Saltwater .....	15
Freshwater .....	16
Trips.....	16
Saltwater .....	16
Freshwater .....	17
Logbook Trip Effort and Harvest .....	17
Saltwater .....	18
Freshwater .....	19
DISCUSSION.....	21
Guide and Business Licensing.....	21
Logbooks .....	21
Consideration of an Electronic Reporting Option.....	22
Verification of Logbook Harvest Data .....	23
ACKNOWLEDGEMENTS.....	23
REFERENCES CITED .....	24
APPENDIX A. SPORT FISH BUSINESS OWNER/GUIDE LICENSE APPLICATION.....	25
APPENDIX B. SALTWATER LOGBOOK FORM .....	29
APPENDIX C. FRESHWATER LOGBOOK FORMS .....	33
APPENDIX D. VESSEL REGISTRATION FORMS, DECALS, AND TAGS .....	37
APPENDIX E. SALTWATER EDITING RESULTS.....	41

## TABLE OF CONTENTS (Continued)

APPENDIX F. FRESHWATER EDITING RESULTS .....	Page 43
APPENDIX G. ELECTRONIC REPORTING SURVEY.....	45
APPENDIX H. FRESHWATER LOGBOOK SUMMARIES BY AREA AND SITE.....	49
APPENDIX I. SALTWATER LOGBOOK SUMMARIES BY AREA AND PORT OF OFFLOADING.....	71

## LIST OF TABLES

Table		Page
1.	Division of Sport Fish regions and management areas. ....	3
2.	Number of licensed businesses and guides by region, 2009–2014.....	13
3.	Number of active saltwater businesses and guides by region, 2009–2014.....	14
4.	Number of active freshwater businesses and guides by region, 2009–2014. ....	14
5.	Number of registered and active saltwater vessels by region, 2009–2014. ....	15
6.	Number of active saltwater vessels that made at least one trip in each target category, by region, 2009–2014.....	15
7.	Number of registered freshwater vessels by year and region, 2009–2014. ....	16
8.	Number of saltwater trips by targeted species by region, 2009–2014.....	16
9.	Number of freshwater trips by region, 2009–2014.....	17
10.	Saltwater and freshwater trips and angler-days by region, 2009–2014.....	17
11.	Saltwater salmon effort and harvest by region and angler type, 2014.....	18
12.	Saltwater bottomfish effort and harvest by species, region and angler type, 2014.....	19
13.	Freshwater effort and harvest by species, region and angler type, 2014. ....	20

## LIST OF FIGURES

Figure		Page
1.	Map of Alaska and Division of Sport Fish regions and management areas. ....	4
2.	International Pacific Halibut Commission regulatory areas.....	5

# LIST OF APPENDICES

Appendix	Page
A1. Sport fish business owner/guide license application, 2014. ....	26
B1. Saltwater charter logbook form, 2014. ....	30
C1. Freshwater guide logbook from, 2014. ....	34
D1. Saltwater sport fish charter logbook sign-out and vessel registration form, 2014. ....	38
D2. Freshwater sport fish guide vessel registration form, 2014. ....	39
D3. Vessel decal, 2014. ....	40
D4. Vessel tab, 2012. ....	40
E1. Saltwater editing results, 2014. ....	42
F1. Freshwater editing results, 2014. ....	44
G1. Electronic logbook reporting mail-in survey, 2014. ....	46
H1. Freshwater logbook participation by area and site, Southeast Alaska, 2014. ....	50
H2. Freshwater logbook participation by area and site, Southcentral Alaska, 2014. ....	51
H3. Freshwater logbook participation by area and site, Arctic-Yukon-Kuskokwim Alaska, 2014. ....	55
H4. Freshwater logbook participation by region, Statewide, 2014. ....	56
H5. Freshwater logbook angler-days and species kept by area and site, Southeast Alaska, 2014. ....	57
H6. Freshwater logbook angler-days and species kept by area and site, Southcentral Alaska, 2014. ....	58
H7. Freshwater logbook angler-days and species kept by area and site, Arctic-Yukon-Kuskokwim Alaska, 2014. ....	62
H8. Freshwater logbook angler-days and species kept by region, Statewide, 2014. ....	63
H9. Freshwater logbook angler-days and species released by area and site, Southeast Alaska, 2014. ....	64
H10. Freshwater logbook angler-days and species released by area and site, Southcentral Alaska, 2014. ....	65
H11. Freshwater logbook angler-days and species released by area and site, Arctic-Yukon-Kuskokwim Alaska, 2014. ....	69
H12. Freshwater logbook angler-days and species released by region, Statewide, 2014. ....	70
I1. Saltwater logbook participation and effort by area and port of offloading, Southeast Alaska, 2014. ....	72
I2. Saltwater logbook participation and effort by area and port of offloading, Southcentral Alaska, 2014. ....	73
I3. Saltwater logbook participation and effort by region, statewide, 2014. ....	74
I4. Saltwater logbook salmon participation, effort, and fish kept and released by area and port of offloading, Southeast Alaska, 2014. ....	75
I5. Saltwater logbook salmon participation, effort, and fish kept and released by area and port of offloading, Southcentral Alaska, 2014. ....	76
I6. Saltwater logbook salmon participation, effort, and fish kept and released by region, statewide, 2014. ....	77
I7. Saltwater logbook bottomfish participation, effort, and fish kept and released by area and port of offloading, Southeast Alaska, 2014. ....	78
I8. Saltwater logbook bottomfish participation, effort, and fish kept and released by area and port of offloading, Southcentral Alaska, 2014. ....	79
I9. Saltwater logbook bottomfish participation, effort, and fish kept and released by region, statewide, 2014. ....	80





## ABSTRACT

In 2014, 1,115 sport fishing businesses and 2,788 guides were licensed under the Alaska Department of Fish and Game guide and business licensing program, signifying intent to provide sport fishing services in Alaska. Of the 1,115 sport fishing businesses registered in 2014, 983 were combination owner/guide licenses. Based on the 2014 physical addresses of both the businesses and guides, 87% of the businesses were residents of Alaska and 13% were from other residency strata (defined as nonresidents), and 63% of the guides were residents and 37% were nonresidents.

Of the 2,172 saltwater logbooks issued in 2014, 1,742 were activated, and of the 2,160 freshwater logbooks issued in 2014, 1,515 were activated. Of those businesses that submitted logbook information in 2014, 55% offered saltwater services, and 45% offered freshwater guided services. In 2014, logbook records show that 1,006 saltwater vessels were active. Of those active saltwater vessels, 60% were active in Southeast Alaska and 40% were active in Southcentral Alaska.

A total of 50,152 saltwater charter trips and 248,874 saltwater angler-days of fishing occurred in 2014. Of the statewide saltwater trips, 86% of the saltwater angler-days were nonresidents; 11% were residents; and 3% were crew, comped fishing (nonpaying anglers), or unknown residency. In freshwater, 40,152 trips and 117,150 angler-days occurred in 2014. Of the statewide freshwater trips, 89% of the angler-days were nonresidents; 8% were residents; and 3% were crew, comped fishing, or unknown residency.

Saltwater salmon harvest in 2014 show that coho salmon *Oncorhynchus kisutch* and Chinook salmon *O. tshawytscha* made up 67% and 18%, respectively, of the total salmon harvest statewide. Saltwater bottomfish harvests in 2014 show that Pacific halibut *Hippoglossus stenolepis* were the predominant species with 47% of the total saltwater bottomfish harvest statewide. In freshwater, sockeye salmon *O. nerka* and coho salmon made up 45% and 44% respectively of the total harvest statewide, followed by Chinook salmon at 6%.

**Key words:** Sport fishing, guide and business registration, freshwater logbook, saltwater logbook, participation, effort, harvest, sport fishing vessel, Pacific halibut, salmon, bottomfish, Southeast Alaska, Southcentral Alaska

## BACKGROUND

The Alaska Department of Fish and Game (ADF&G) Division of Sport Fish has operated a program to register and license both sport fishing guides and sport fishing guide businesses since 1998. Saltwater information on guided sport fishing participation, effort, and harvest has been collected since 1998. Freshwater guided information on fishing participation, effort, and harvest has been collected since 2005. Summary information on freshwater and saltwater participation, effort, and harvest has been reported since 2006 (Sigurdsson and Powers 2009–2013). This report briefly summarizes the approach, history, and results of this program for 2014.

## GUIDE AND BUSINESS REGISTRATION AND LICENSING

The activities of the guided sport fishing industry in Alaska have remained fairly steady after a drop in 2009. Resolution of allocation and management issues was hampered by a lack of information regarding the industry and its impact on fishery resources in many parts of Alaska. The sport fishing guide and business registration and licensing programs were designed to provide a comprehensive system to better define this diverse industry throughout Alaska. A brief history of the statewide registration and licensing process follows.

Beginning in May 1995 the owner(s) of any business that engaged in sport fish guiding of anglers anywhere in Alaska were required to register their business information and employees acting as sport fishing guides for the business, and list all vessels used for guiding. In 1997, sport fishing guides were required to register and provide information about the employing business (Dean 2001; Dean and Howe 1999).

In 1998, the Alaska Board of Fisheries (BOF) adopted new statewide sport fishing guide registration regulations and definitions during their February Statewide Finfish meeting in Girdwood, Alaska (5 AAC 75.075: *Sport Fishing Services and Sport Fishing Guide Services; License Requirements; Regulations of Activities*). It should be stressed that this was a registration process, not a licensing process. No fees were required and businesses and guides were allowed to provide services in any area of the state, assuming other regulatory requirements were met. In 1998, ADF&G continued to register guide businesses and guides but stopped registering charter vessels, because the Commercial Fisheries Entry Commission implemented a licensing program for all vessels to be used for guided sport fishing. From 1998 through 2004, ADF&G continued to register sport fishing businesses and sport fishing guides.

On May 11, 2004, the Alaska Legislature adopted House Bill 452 (HB 452), which established licensing requirements for sport fishing guide business owners and sport fishing guides on a statewide basis. This bill was created to establish minimum professional standards required of both freshwater and saltwater sport fish guides and business owners before a license could be obtained. The standards were established to protect consumers and to promote the viability and legitimacy of a professional sport fish guide industry. Businesses providing sport fish guided services were now required to obtain a State of Alaska Occupational Business License and hold liability insurance with a minimum of \$300,000 coverage for all incidents in a year (AS 16.40.260). Licensed sport fishing guides were required (1) to be citizens of the United States, Canada, or Mexico; (2) hold a current first aid card; (3) have a current year Alaska sport fishing license; and (4) have a valid U.S. Coast Guard (USCG) operator's license if they were to operate a motorized vessel in navigable waters. License application forms and the information collected have remained consistent in design since 2006.

## LOGBOOKS

In February 1998, the BOF adopted regulations (5 AAC 75.076) requiring logbooks for saltwater charter vessels statewide. Information on the location of charter activity and actual participation and harvest by individual vessels and businesses was needed by the BOF for allocation and management of Chinook salmon *Oncorhynchus tshawytscha*, rockfish *Sebastes* spp., and lingcod *Ophiodon elongatus*, and by the North Pacific Fisheries Management Council (NPFMC) for allocation of Pacific halibut *Hippoglossus stenolepis*. To meet these information needs ADF&G implemented a saltwater sport fishing charter vessel logbook program for Division of Sport Fish Region I, Southeast Alaska (Southeast), and Region II, Southcentral Alaska (Southcentral; Table 1; Figure 1).

In 1999, the NPFMC was considering proposals to limit the guided sport halibut harvest. Their concerns were (1) that growth in this fishery was reallocating resources away from the individual fishing quota commercial longline fishery, and (2) that in some areas there was overcapitalization and localized depletion of the halibut resource. NPFMC endorsed a two-prong approach to resolve the perceived impact of increased guided charter halibut fishing. The first was establishment of guideline harvest limits for International Pacific Halibut Commission (IPHC) Areas 2C and 3A (Figure 2), and the second was a process to establish local area management plans for halibut fisheries in coastal communities.

Since 1998, the logbook design has undergone annual revisions, driven primarily by changes or improvements in the collection of halibut, lingcod, and rockfish data through the logbook program, Statewide Harvest Survey, and expanded port sampling programs. House Bill 452,

adopted in 2004, not only established new licensing requirements but also established a logbook reporting requirement for all freshwater businesses in addition to the existing saltwater reporting requirements. For various reasons, both technical and policy-based, information on halibut harvests was not collected in the logbook from 2002 through 2005. The collection of halibut data was resumed in 2006. In addition, the 2006 logbook was redesigned to require reporting of angler license numbers and the harvest and release numbers by angler in an effort to improve reporting and facilitate evaluation of the quality of logbook data.

The data from logbooks are compiled to show where fishing effort occurs, the extent of participation, and the species and numbers of fish kept and released by individual clients. This information is used for regulation decisions and the development and management of fisheries, for project evaluation, and for formulation of department policies and priorities that reflect angler needs, concerns, and preferences. It also provides ADF&G with a tool to promote management of Alaska's resources for sustained yield.

Table 1.—Division of Sport Fish regions and management areas.

Regions	
SE	Southeast Alaska
SC	Southcentral Alaska
AYK	Arctic-Yukon-Kuskokwim
Areas	
Southeast Alaska	
A	Ketchikan
B	Prince of Wales Island
C	Kake, Petersburg, Wrangell, Stikine
D	Sitka
E	Juneau
F	Haines/Skagway
G	Glacier Bay
H	Yakutat
Southcentral Alaska	
J	Prince William Sound/North Gulf Coast
K	Knik Arm Drainage
L	Anchorage
M	Susitna River Drainage
N	West Side Cook Inlet drainages
P	Kenai Peninsula
Q	Kodiak
R	Naknek River/Alaska Peninsula
S	Kvichak River Drainage
T	Nushagak, Wood River, and Togiak
Arctic-Yukon-Kuskokwim	
I	Upper Copper River Drainage
U	Tanana River Drainage
V	Kuskokwim River-Kuskokwim Bay Drainages
W	Norton Sound /Seward Peninsula
X	Northwest Alaska
Y	Yukon River Drainage
Z	North Slope/Brooks Range

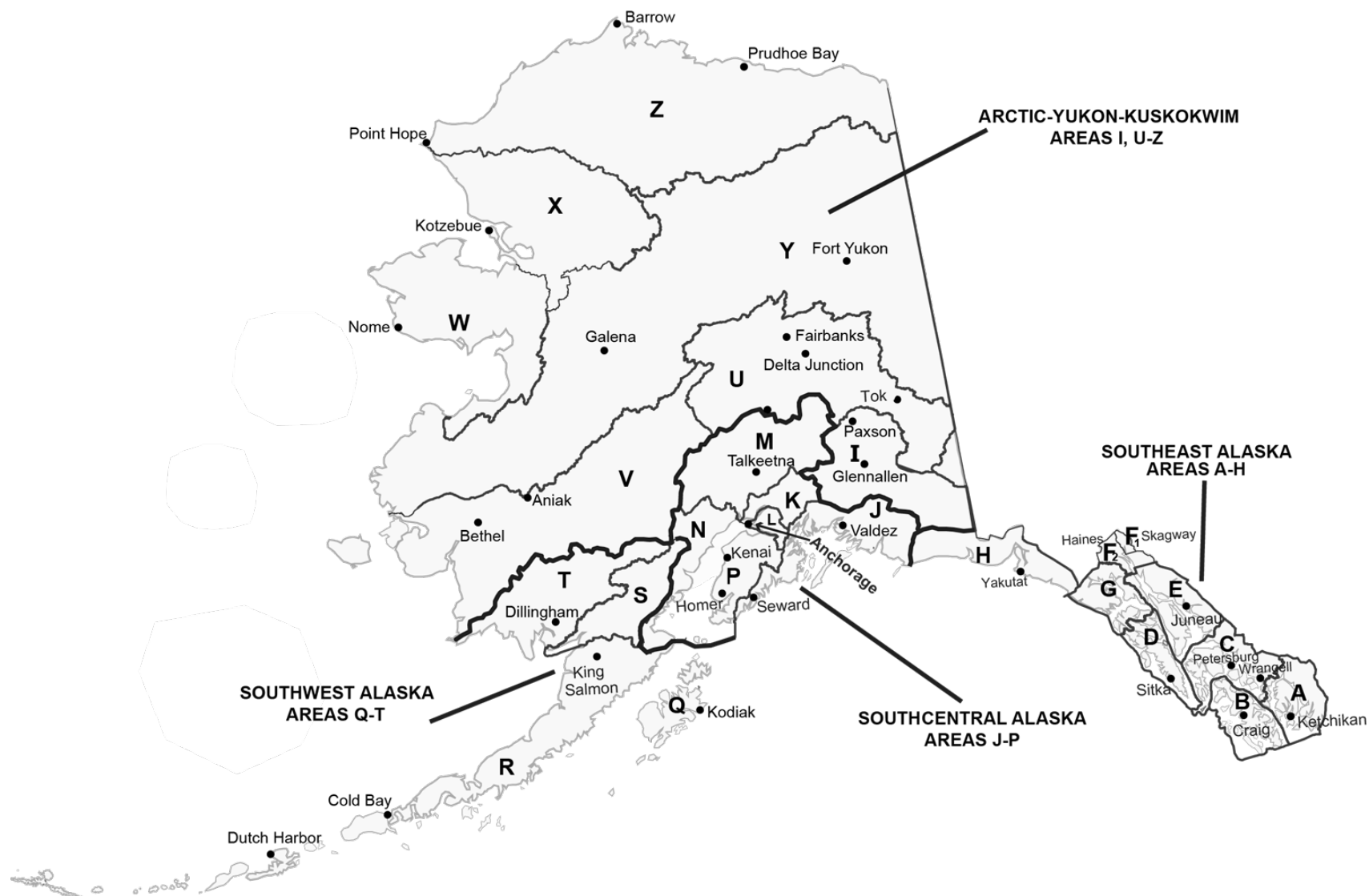


Figure 1.—Map of Alaska and Division of Sport Fish regions and management areas.

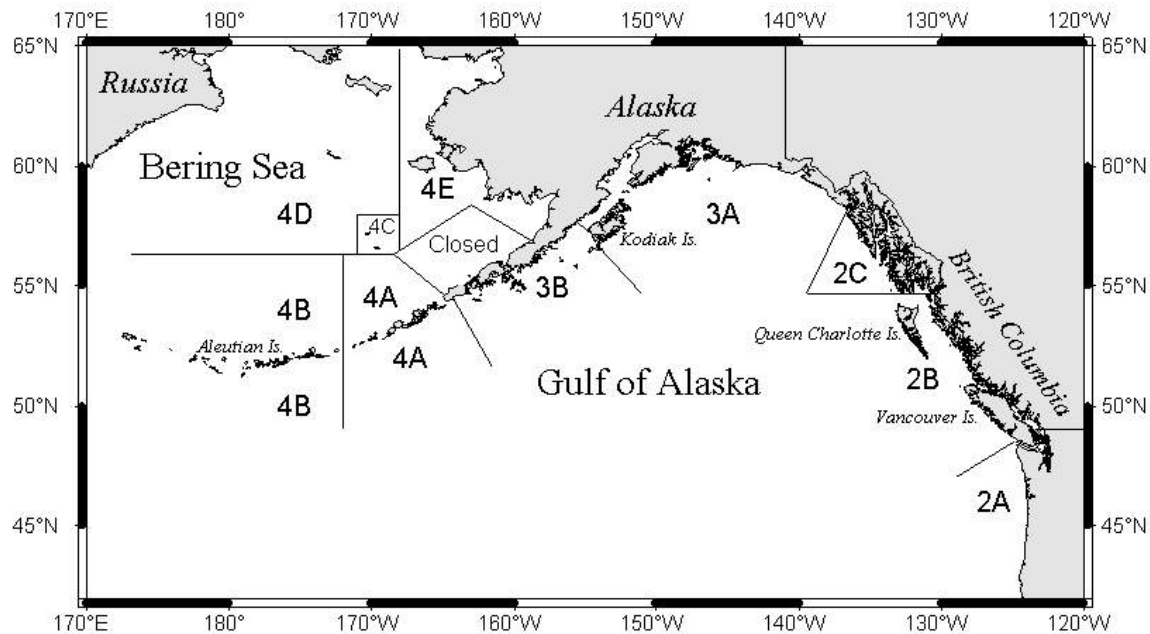


Figure 2.—International Pacific Halibut Commission (IPHC) regulatory areas.

Currently, a logbook record is required for every chartered or guided trip taken with clients, defined as an outing with one group of clients that ends when the clients and their fish (if fish were kept) are offloaded. Each trip is associated with an individual licensed business and guide.

## VESSEL REGISTRATION

In addition to establishing a licensing program and statewide freshwater logbook requirement, HB 452 included establishment of a vessel registration program to be conducted by ADF&G as part of the logbook program to monitor the number of vessels used in the guided marine and freshwater fisheries. All guide industry boats used in marine or freshwater are referred to as “charter or guide boats” regardless of their size or the manner in which they are used. All vessels used in the charter guide industry were required to be registered with ADF&G.

## VERIFICATION OF LOGBOOK HARVEST DATA

Preliminary results from verification studies comparing the accuracy of logbook harvest data with the statewide harvest survey estimates and onsite creel programs are favorable (Meyer and Powers 2009). Logbook data will continue to be compared to counts from these programs. Comparisons are ongoing and are part of a more comprehensive evaluation of logbook data quality. Saltwater and freshwater logbook data have also been used for a variety of regulatory analyses for state-managed species. With the federal adoption of the Catch Sharing Plan (CSP), the saltwater logbook has become the standard measurement tool used by the NPFMC for halibut management.

## METHODS

### GUIDE AND BUSINESS LICENSING

Businesses and guides can be licensed to provide sport fishing guided services if they meet the minimum qualifications specified in regulation (AS 16.40.260 and AS 16.40.270).

Beginning in 2006 the Division of Sport Fish mailed renewal license applications to each sport fishing guide and sport fishing business that was licensed in the previous year. In addition, guides and businesses could obtain a license in person at local ADF&G offices or through the Internet.

The license application could be used in three ways (Appendix A1):

- To license a business only.
- To license a guide only.
- To license a combination business and guide (an owner/operator where the owner also conducted the guiding).

The license application collected business owner or guide name, permanent mailing information, permanent phone number, and inseason phone number if applicable. Additionally, the name of the business, name of the business owner, occupational business license number, insurance company information, and insurance binder or policy number and effective dates were required. Guide information is collected on citizenship; a guide must be a citizen of the United States, Canada, or Mexico. Additional information collected includes current first aid status and the number of the current year Alaska sport fishing license. If a guide planned to operate a motorized vessel on navigable waters with clients on board, the guide was required to have a current U.S. Coast Guard Operator's License and provide that number and expiration date on the license application.

Unique license numbers were assigned according to how licensing occurred. License numbers did not remain the same in subsequent years. If an operator or guide licensed at an ADF&G office, a pre-numbered application was used and that number became the license number for that year. Renewal or internet license applications are numbered sequentially by the computer database that processed the information

Once the license applications were reviewed for completeness and accuracy, Division of Sport Fish mailed a wallet-sized license to each guide or business. Those applicants who licensed by going to an ADF&G office received a copy of their application, which allowed them to operate immediately. Those who applied on the Internet, or with the renewal application, were required to wait until they received their license in the mail prior to operating or providing guiding services.

## **LOGBOOK DATA COLLECTION**

Logbook reporting is a mandatory process governed by regulation (AS 16.40.280). As such, the reporting process was considered to be a census of all charter/guided trips. Logbooks were available and issued from ADF&G area offices located statewide, in addition to a vendor located in Seward and Valdez.

The statewide logbook has remained consistent in design since 2006, with few annual changes occurring in logbook layout. In 2006, both the freshwater and saltwater logbooks were redesigned to require reporting of angler license numbers and the harvest and release numbers by individual angler in an effort to improve reporting and facilitate evaluation of the quality of logbook data. Annual design changes in the saltwater logbook were driven primarily by changes or improvements in the collection of halibut and rockfish data, and by requests from the NPFMC for information needed for allocation of halibut. Other changes were made to improve or

simplify the use of the forms based on operator input, and to improve the collection of client and crew harvest information.

In 2011, ADF&G worked collaboratively with National Marine Fisheries Service (NMFS) to modify the logbook requirements associated with the federal Charter Halibut Permit (CHP) program, a program that establishes limited access to the guided halibut fishery. The 2011 saltwater logbook was designed to capture CHP numbers associated with the permits granted by the NMFS to qualifying participants in the sport fish charter halibut fishery.

In July 2011, National Oceanic and Atmospheric Administration (NOAA) Fisheries proposed regulations to authorize Guided Angler Fish (GAF) for the charter halibut fisheries in area 2C and area 3A within a CSP. Guided Angler Fish would have offered charter anglers in these areas an opportunity to harvest halibut in addition to, or instead of, the halibut harvest under charter angler daily limits. The proposed GAF regulations included a requirement for charter operators to record a GAF permit number and GAF harvest information in the saltwater logbook. ADF&G again worked with the NMFS to review the options of collecting GAF halibut under the proposed CSP by redesigning the logbook. Although the 2012 and 2013 saltwater logbooks were designed to capture GAF halibut, the federal GAF proposal was not in effect during those 2 years. Effective January 13, 2014, the halibut CSP authorized annual transfers of commercial halibut Individual Fishing Quota (IFQ) as GAF to charter halibut permit holders for harvest in the charter halibut fishery. Guided Angler Fish offered charter halibut permit holders in area 2C and area 3A an opportunity to lease a limited amount of IFQ from commercial quota share (QS) holders to allow charter clients to harvest halibut in addition to, or instead of, the halibut harvested under the daily bag limit for charter anglers. Charter vessel operators who chose to participate in the GAF program were able to offer their clients the opportunity to harvest up to 2 halibut a day without the size restrictions imposed on the guided halibut charter industry. In 2014, operators started reporting their GAF halibut in the saltwater logbook.

## **Saltwater Logbook**

A saltwater logbook consisted of the cover page, schedule of reporting deadlines, one logbook sign-out sheet to show the business to which the logbook was issued and to register the saltwater vessel, a set of instructions for filling out the information on the logbook sheets, and 50 data sheets to record trip information (Appendix B1). The following information was recorded on the 2014 saltwater logbook data sheets:

- Date that fishing took place.
- Time that trip ended.
- ADF&G guide license number for the guide leading the trip.
- CHP number.
- Primary statistical area fished while targeting salmon or bottomfish.
- Number of hours fished.
- Port or community where trip ended.
- Guided Angler Fish (GAF) permit number
- Crew, client, and “comped” angler’s current ADF&G sport fishing license or PID (permanent fishing license) number, and the word “YOUTH” for anglers under 16.
- First and last name of each client and youth angler.

- Client residency (Alaska resident/nonresident of Alaska).
- Indication if angler was a crew member or if angler was “comped.”
- Signature of those anglers who kept halibut while fishing in IPHC areas 2C or 3A.
- A breakdown by fish species kept and released by each individual angler.

During a saltwater charter trip, the operator must decide if his/her gear or fishing methods are effectively targeting bottomfish, salmon, or both. A 6-digit statistical area code where most of the fish were caught or targeted is logged for each trip. Statistical area maps were provided to the operator upon logbook issuance.

Saltwater species information collected included kept and released information for “large” Chinook (king salmon) 28” and longer and for “small” Chinook less than 28”. Also recorded were coho *O. kisutch*, sockeye *O. nerka*, other salmon, halibut, GAF halibut kept, lingcod, pelagic rockfish, yelloweye and other nonpelagic rockfish, salmon shark *Lamna ditropis*, and sablefish *Anoplopoma fimbria*.

To determine the number of businesses and guides that were “active” in the industry, a cross reference of business and guide licenses is made with the logbook checkout sheet and logbook data sheets. If ADF&G received at least one logbook data page that reported targeted effort with paying clients, the charter operator turning in the form was considered an “active” bottomfish or salmon charter operator with an “active” vessel.

## **Freshwater Logbook**

A freshwater logbook consisted of the cover page, schedule of reporting deadlines, one logbook sign-out sheet to show the business to which the logbook was issued, a freshwater vessel registration page that collects the unique Alaska Vessel number (AK #) assigned by the Division of Motor Vehicles (DMV) or a USCG documentation number and primary drainage, a set of instructions for filling out the information on the logbook sheets, and 50 data sheets (Appendix C1) to record trip information.

The following information was recorded on the 2014 freshwater logbook data sheets:

- ADF&G guide license number for the guide leading the trip.
- Date that fishing took place.
- Specific name of river, stream, or lake fished.
- Site code of site fished as referenced within a list provided with each logbook.
- Number of logbook pages used for a specific trip.
- Name of any other species kept or released not already listed.
- Crew, client, and “comped” angler’s current ADF&G sport fishing license number, and a youth angler designation for anglers under 16 years of age.
- Client residency.
- Indication if angler was a crew member or if angler was “comped.”
- A breakdown by fish species kept and released by each individual angler.

The freshwater logbook does not collect targeted species information like the saltwater logbook; it collects information on species kept and released regardless of what was targeted. A trip is counted if a logbook data page is submitted with paying client information. Freshwater trips are



assigned to a region of the state based on the name of the site fished; each freshwater site is assigned a unique regional alpha code followed by a numeric code within the region in which it is located (Table 1).

Freshwater information collected consisted of the following: kept and released numbers for Chinook, coho, and sockeye salmon; cutthroat *O. clarkii*; rainbow and steelhead trout *O. mykiss*; lake trout *Salvelinus namaycush*; Dolly Varden *S. malma*; Arctic grayling *Thymallus arcticus*; northern pike *Esox lucius*; sheefish *Stenodus leucichthys*; and a category for the number of all other fish not already listed.

Business operators are permitted and even encouraged to pick up as many logbooks as they anticipate needing during the course of the season. The ability to acquire as many logbooks as are needed prevents them from having to make multiple trips to an ADF&G office. As a result, numerous businesses ended up getting more logbooks than were eventually used. Because of this, ADF&G differentiates between the number of logbooks issued versus the number that are actually used or activated.

### **Vessel Registration**

Vessel registration information was collected when a saltwater or freshwater logbook was issued to a business (Appendices D1 and D2). Registration information included the DMV AK# or the USCG vessel documentation number. Upon completion of vessel registration with ADF&G, each vessel was provided with two decals and year tags to indicate that the vessel is to be used in the guide industry (Appendices D3 and D4). Decals must be applied and visible on both sides of the vessel.

## **LOGBOOK OUTREACH, VALIDATION, AND VERIFICATION**

In December 2005, the Commissioner of the ADF&G issued a statement that mandated and detailed strategies for assuring the accuracy of the reporting of Pacific halibut harvest for the saltwater charter logbook through outreach and validation.

### **Outreach**

An outreach program was initiated to reach as many operators as possible to field questions and to ensure compliance with the reporting requirements. The outreach program was conducted on-site (in the field) by ADF&G employees and off-site from the Anchorage ADF&G office.

#### ***On-site Logbook Inspections***

Logbook outreach occurred in parts of the Southeast and Southcentral regions in conjunction with existing creel survey and port sampling programs. “Courtesy logbook inspections” were conducted as time allowed by ADF&G creel and port sampling technicians during their regular dockside checks of the primary fisheries from May through September. In addition, management staff continued with periodic checks of charter logbooks while in the field. Logbooks were inspected to make sure they were filled out correctly, and staff answered any questions about how they should be filled out. These checks were not intended for enforcement or for evaluating the accuracy of data but rather as another opportunity to encourage compliance and completeness and as an indicator of how important logbook data are to ADF&G.

### ***Off-site Logbook Review***

The goal of the outreach program was to ensure compliance with all reporting requirements by emphasizing education early in the season. Off-site outreach was conducted by the Division of Sport Fish, Research and Technical Services (RTS) staff in the Anchorage office. All logbook trip data was subject to a reporting deadline. Logbook data pages were required to be completed and returned to ADF&G on a weekly basis as specified in the instructions of both the saltwater and freshwater logbooks. Timely submission was a requirement to facilitate recall and to allow ADF&G staff to review each data page for completeness and legibility. All logbook data sheets were received by RTS in Anchorage where ADF&G data entry staff date-stamped each data page with the date received; reviewed each page for incomplete, illegible or erroneous information; and conducted phone calls to business owners and guides for follow-up and clarification. Calls early in the season were intended to alleviate repeat errors in reporting and were thought to result in fewer calls being necessary later in the fishing season.

As logbook data sheets were received, RTS staff conducted reviews by monitoring all data for completion and legibility prior to data entry. In the event that some of the logbook data sheets required clarification from the operator or guide, staff would place phone calls.

Phone calls to the business owners and guides significantly improved the quality of the data, minimized reoccurring mistakes by the guide, increased compliance, and contributed to the outreach portion of this program. Logbook data entry staff contacted charter operators to resolve logbook reporting issues and to improve future reporting. These calls were intended to improve data quality and reinforce the message to the guide industry that logbook data are important and are consistently being reviewed.

Number of follow-up calls to Operators by year				
2010	2011	2012	2013	2014
830	651	829	835	875

Follow-up phone calls have become a valuable outreach tool and will continue to be a standard procedure in the future.

### **Validation**

#### ***Inseason Saltwater Logbook Editing***

Computer routines have been written to check and validate the following saltwater data fields during the fishing season as logbook data pages are returned:

- Validate the guide license is filled in and valid.
- Validate the date is filled in and in the year 2014.
- Validate the port of landing is entered and is in the valid port site table.
- If hours are listed, verify a statistical area is listed for the appropriate effort.
- Verify the statistical area listed is a valid statistical area.
- If there is harvest, verify the appropriate statistical area is filled in.
- If a statistical area is filled out, verify the appropriate hours field is filled in.

- Verify a statistical area is filled in (both can't be blank).
- Verify hours are filled in (both can't be blank).
- Validate possible incorrect stat areas that appear to be valid;
  - If data entry mistakenly enters the hours info in the statistical area, the first statistical area that starts with the same number will be auto-populated and accepted as valid.
- Check to see which log pages were turned in more than 7 days after the due date.
- Verify logbooks are checked out to a business and not a guide.
- Check all records with more than 12 hours listed.
- Check for duplicate logbook pages.
- Check trips that don't have paying angler records.
- Verify the date fished is not greater than the date the log page is received by ADF&G.
- Check to see if Charter Halibut Permit (CHP) is present if halibut were harvested.
- Verify CHP is valid according to list from NOAA.
- Check to see if Guided Angler Fish (GAF) is present if GAF halibut are harvested.

### ***Postseason Saltwater Logbook Editing***

At the end of the fishing season, computer routines check and validate the above listed items in addition to the following saltwater data fields in preparation for developing summaries (Appendix E1).

- Re-run all of the inseason edits.
- Check to make sure fish kept are within the limits for the area fished.
- Validate and review excessively large numbers of released fish based on frequency distribution analysis.

### ***Inseason Freshwater Logbook Editing***

Computer routines have been written to check and validate the following freshwater data fields during the fishing season as logbook data pages are returned:

- Validate the guide license number is filled in and valid.
- Validate the date is filled in and in the year 2014.
- Validate the site code is entered and is in the valid site code table.
- Check to make sure there are paying clients (not comped or crew) on the trip.
- Check to see which log pages were turned in more than 7 days after the due date.
- Check for duplicate logbook pages.
- Verify the date fished is not greater than the date the log page is received by ADF&G.

- Verify logbooks are checked out to a business and not a guide.
- Verify that Kenai River trips weren't taken on Sunday or Monday in May – July.
- Check trip records that don't have angler records.

### ***Postseason Freshwater Logbook Editing***

At the end of the fishing season, computer routines check and validate the above-listed items in addition to the following freshwater data fields in preparation for developing summaries:

- Re-run all of the inseason edits.
- Check to make sure fish kept are within the limits for the site fished.
- Check to make sure the fish caught are valid species for the site fished.
- Validate excessively large numbers of released fish based on frequency distribution analysis.
- Recode "Other" site codes to correct values if they exist in the site code table.
- Recode sites with "System" in the description to a more specific site code if available.
- Check records with 6 clients on a single page to verify that the next page is not part of the same trip.

## **RESULTS**

### **GUIDE AND BUSINESS LICENSING**

In 2014, ADF&G received license applications from 1,115 sport fishing businesses and 2,788 sport fishing guides licensed with the intent to provide sport fishing services in Alaska. The total number of businesses and guides includes saltwater and freshwater operators. Of the 1,115 sport fishing businesses licensed in 2014, 983 were combination owner/guide licenses. Physical addresses of both the businesses and guides in 2014 indicated that 87% of the businesses reported Alaska residency, and 13% were from other residency strata (defined as nonresidents); 63% of the guides were residents and 37% were nonresidents.

The licensed businesses and guides were subtotaled by region of residency for Southeast, Southcentral, and Other Alaska, including the Arctic–Yukon–Kuskokwim area and nonresident. In 2014, businesses with a physical address in Southeast made up 27% of the total licensed businesses, 56% were located in Southcentral, 4% had permanent addresses in other parts of Alaska, and 13% had nonresident addresses based on their license applications. In 2014, of those that licensed as guides only, 12% had permanent addresses in Southeast, 33% in Southcentral, and 4% in other parts of Alaska, and 51% had nonresident addresses based on their license applications (Table 2).

Table 2.—Number of licensed businesses and guides by region, 2010–2014.

Region <sup>b</sup>	Licensed Businesses <sup>a</sup>				
	2010	2011	2012	2013	2014
Southeast	32	43	36	31	36
Southcentral	68	64	64	58	63
Other Alaska	4	2	4	3	6
Resident Total	104	109	104	92	105
Other U.S.	25	26	27	30	27
Foreign	0	0	0	0	0
Nonresident Total	25	26	27	30	27
Total	129	135	131	122	132
Region <sup>b</sup>	Combination Licenses <sup>c</sup>				
	2010	2011	2012	2013	2014
Southeast	351	313	288	277	268
Southcentral	764	726	656	608	560
Other Alaska	62	62	50	53	40
Resident Total	1,177	1,101	994	938	868
Other U.S.	146	135	138	118	115
Foreign	0	0	0	0	0
Nonresident Total	146	135	138	118	115
Total	1,323	1,236	1,132	1,056	983
Region <sup>b</sup>	Licensed Guides <sup>d</sup>				
	2010	2011	2012	2013	2014
Southeast	269	269	228	207	222
Southcentral	662	623	614	585	598
Other Alaska	78	85	72	68	72
Resident Total	1,009	977	914	860	892
Other U.S.	702	747	798	850	911
Foreign	0	0	0	1	2
Nonresident Total	702	747	798	851	913
Total	1,711	1,724	1,712	1,711	1,805

*Note:* Data are current as of 11/06/2015; does not include duplicate licenses.

<sup>a</sup> Business-only licenses that do not include the owner as a guide.

<sup>b</sup> Region assigned based on physical address indicated at time of licensing.

<sup>c</sup> Combination licenses that include the business and the business owner as the guide.

<sup>d</sup> Guide license only, no business license.

Based on the submission of logbook data pages with trip information in 2014, data indicated that saltwater services were provided by 571 businesses; 465 provided freshwater services. These totals include 90 businesses that provided both freshwater and saltwater services (Tables 3 and 4).

Table 3.–Number of active saltwater businesses and guides by region, 2010–2014.

Region <sup>c</sup>	Active Businesses <sup>a</sup>					Active Guides <sup>b</sup>				
	2010	2011	2012	2013	2014	2010	2011	2012	2013	2014
Southeast	373	341	321	301	303	730	673	691	702	691
Southcentral	403	345	300	273	274	633	571	539	541	512
Total <sup>d</sup>	776	686	620	573	571	1,325	1,222	1,198	1,202	1,164

Note: Data are current as of 11/06/2015.

<sup>a</sup> Active Business counts are based on the business number listed on the sign-out sheet of a logbook (this can be a business only or a combination business/guide license) and the submission of at least one log page from the logbook.

<sup>b</sup> Active Guide counts are based on the guide number written on each log page (this can be a guide only or a combination business/guide license) and the submission of at least one log page showing that guide license number.

<sup>c</sup> Region is based on the port of offloading (or salmon and bottomfish statistical areas if port is not listed).

<sup>d</sup> Total is not additive because a business or guide could operate in both regions. Includes businesses and guides that offered both saltwater and freshwater services.

Table 4.–Number of active freshwater businesses and guides by region, 2010–2014.

Region <sup>c</sup>	Active Businesses <sup>a</sup>					Active Guides <sup>b</sup>				
	2010	2011	2012	2013	2014	2010	2011	2012	2013	2014
Southeast	69	68	62	64	59	149	159	160	161	156
Southcentral	433	431	407	389	367	1,035	1,039	1,004	1,033	1,020
Arctic–Yukon–Kuskokwim	62	61	53	63	56	200	218	198	213	229
Total <sup>d</sup>	546	537	503	496	465	1,331	1,345	1,293	1,318	1,322

Note: Data are current as of 11/09/2015.

<sup>a</sup> Active Business counts are based on the business number listed on the sign-out sheet of a logbook (this can be a business only or a combination business/guide license) and the submission of at least one log page from the logbook.

<sup>b</sup> Active Guide counts are based on the guide number written on each log page (this can be a guide only or a combination business/guide license) and the submission of at least one log page showing that guide license number.

<sup>c</sup> Region is based on the site code provided for the site fished on each logbook page.

<sup>d</sup> Total is not additive because a business or guide could operate in multiple regions. Includes businesses and guides that offered both saltwater and freshwater services.

## VESSELS

### Saltwater

Of the 1,175 registered saltwater vessels in 2014, 1,006 were actually active. Based on the port of offloading, 605 saltwater vessels operated in Southeast and 407 operated in Southcentral in 2014 (Table 5).

Table 5.—Number of registered and active saltwater vessels by region, 2010–2014.

Region <sup>a</sup>	Registered Vessels					Active Vessels				
	2010	2011	2012	2013	2014	2010	2011	2012	2013	2014
Southeast	778	716	690	679	700	644	610	593	579	605
Southcentral	611	543	497	464	476	528	469	415	396	407
Total <sup>b</sup>	1,389	1,259	1,185	1,142	1,175	1,172	1,079	1,005	974	1,006

Note: Data are current as of 11/06/2015.

<sup>a</sup> Region for registered vessels is based on primary port of operation listed on the sign-out sheet; for active vessels, region is based on primary port of offloading, or salmon and bottomfish statistical areas if port is not listed.

<sup>b</sup> Total is not additive because a vessel could be registered or active in both regions.

Logbook data indicate that vessels will target all possible species during the course of a fishing season: bottomfish, salmon, and both (Table 6).

Table 6.—Number of active saltwater vessels that made at least one trip in each target category, by region, 2010–2014.

Year	Region <sup>b</sup>	Target <sup>a</sup>			
		Salmon	Bottomfish	Both	No Stat Area <sup>c</sup>
2010	Southeast	514	401	567	63
	Southcentral	245	476	385	43
	Total	759	877	952	106
2011	Southeast	522	287	505	40
	Southcentral	257	419	358	38
	Total	779	706	863	78
2012	Southeast	483	330	504	43
	Southcentral	203	382	303	22
	Total	686	712	807	65
2013	Southeast	448	304	501	27
	Southcentral	215	355	304	17
	Total	663	659	805	44
2014	Southeast	486	328	520	31
	Southcentral	212	366	311	14
	Total	698	694	831	45

Note: Data are current as of 11/06/2015.

<sup>a</sup> Species targeted is based on the provision of salmon and/or bottomfish statistical area.

<sup>b</sup> Region is based on the port of offloading (or salmon and bottomfish statistical areas if port is not listed).

<sup>c</sup> No statistical area was written on the log page, so a target could not be determined.

## Freshwater

Based on the primary drainage and sites fished, many more freshwater vessels registered in Southcentral than in other regions between 2010 and 2014 (Table 7).

Table 7.—Number of registered freshwater vessels by year and region, 2010–2014.

Year	Southeast	Southcentral	Arctic-Yukon-Kuskokwim	Unknown <sup>a</sup>	Total <sup>b</sup>
2010	96	1,615	198	3	1,911
2011	91	1,585	244	1	1,920
2012	85	1,535	236	0	1,854
2013	76	1,530	229	0	1,832
2014	71	1,464	250	3	1,787

Note: Data are current as of 11/06/2015.

<sup>a</sup> Insufficient information available during registration and on fishing activity.

<sup>b</sup> Total may not be additive because a vessel could be registered in more than one region.

## TRIPS

### Saltwater

Logbook data indicate that 50,152 saltwater charter trips were conducted statewide in 2014. During the past 5 years, a majority of the trips that only targeted salmon occurred in Southeast Alaska, whereas the majority of trips that only targeted bottomfish occurred in Southcentral Alaska. During the same 5 years, operators in Southeast conducted significantly more trips in which both salmon and bottomfish were targeted on the same trip. If a statistical area fished was not provided or indicated, no targeted species was assigned (Table 8).

Table 8.—Number of saltwater trips by targeted species by region, 2010–2014.

Year	Region <sup>b</sup>	Species Targeted <sup>a</sup>			No Stat Area <sup>c</sup>	Total
		Salmon	Bottomfish	Both		
2010	Southeast	7,613	5,369	14,740	99	27,821
	Southcentral	2,026	13,225	5,593	88	20,932
	Total	9,639	18,594	20,333	187	48,753
2011	Southeast	8,687	3,465	16,056	79	28,287
	Southcentral	2,057	12,091	5,987	67	20,202
	Total	10,744	15,556	22,043	146	48,489
2012	Southeast	8,276	4,789	15,234	60	28,359
	Southcentral	1,555	12,962	4,560	47	19,124
	Total	9,831	17,751	19,794	107	47,483
2013	Southeast	8,019	4,155	17,410	41	29,625
	Southcentral	1,993	12,176	5,260	24	19,453
	Total	10,012	16,331	22,670	65	49,078
2014	Southeast	8,910	5,018	18,708	38	32,674
	Southcentral	1,604	10,059	5,798	17	17,478
	Total	10,514	15,077	24,506	55	50,152

Note: Data are current as of 11/06/2015.

<sup>a</sup> Species targeted is based on the provision of salmon and/or bottomfish statistical area.

<sup>b</sup> Region is based on the port of offloading (or salmon and bottomfish statistical areas if port is not listed).

<sup>c</sup> No statistical area was written on the log page, so a target could not be determined.



## Freshwater

In 2014, 40,152 freshwater trips were conducted statewide; 81% of those trips took place in Southcentral, 12% in the Arctic-Yukon-Kuskokwim (AYK) area, and 7% in Southeast (Table 9).

Table 9.—Number of freshwater trips by region, 2010–2014.

Year	Southeast	Southcentral	Arctic-Yukon-Kuskokwim	Total
2010	2,456	31,263	4,069	37,788
2011	2,430	33,131	4,569	40,130
2012	2,672	30,769	4,347	37,788
2013	2,811	31,076	4,243	38,130
2014	2,869	32,389	4,894	40,152

Note: Region is based on the area code of the site code listed on each logbook page. Data are current as of 11/06/2015.

## LOGBOOK TRIP EFFORT AND HARVEST

Saltwater angler-days and trips remained steady from 2010 to 2014 (Table 10). Freshwater trips show a similar pattern to saltwater trips; numbers remained relatively steady except for a slight increase in 2011 (Table 10).

Table 10.—Saltwater and freshwater trips and angler-days by region, 2010–2014.

Year	Region	Saltwater <sup>a</sup>		Freshwater <sup>b</sup>	
		Trips	Angler-days	Trips	Angler-days
2010	Southeast	27,821	110,915	2,456	8,898
	Southcentral	20,932	135,170	31,263	94,894
	Arctic-Yukon-Kuskokwim	0	0	4,069	9,432
	Total	48,753	246,085	37,788	113,224
2011	Southeast	28,287	111,120	2,430	8,885
	Southcentral	20,202	135,242	33,131	99,661
	Arctic-Yukon-Kuskokwim	0	0	4,569	10,750
	Total	48,489	246,362	40,130	119,296
2012	Southeast	28,359	112,603	2,672	9,924
	Southcentral	19,124	133,283	30,769	90,450
	Arctic-Yukon-Kuskokwim	0	0	4,347	9,984
	Total	47,483	245,886	37,788	110,358
2013	Southeast	29,625	119,222	2,811	9,978
	Southcentral	19,453	138,648	31,076	92,054
	Arctic-Yukon-Kuskokwim	0	0	4,243	10,207
	Total	49,078	257,870	38,130	112,239
2014	Southeast	32,674	131,966	2,869	10,257
	Southcentral	17,478	116,908	32,389	95,003
	Arctic-Yukon-Kuskokwim	0	0	4,894	11,890
	Total	50,152	248,874	40,152	117,150

Note: Data are current as of 11/06/2015.

<sup>a</sup> Region is based on the port of offloading (or salmon and bottomfish statistical areas if port is not listed).

<sup>b</sup> Freshwater region is based on the area code of the site code listed on each logbook page.

## SALTWATER

In 2014, 80% of the saltwater logbooks that were issued were activated (effort or catch reported). Since 2006, the saltwater logbook collected individual angler information including sport fish license numbers and residency. In 2014, records show that 89% of the angler-days of effort in the saltwater charter salmon fishery were conducted by nonresident anglers, compared with 8% by residents and 3% by crew members, comped anglers, or those of unknown residency. In 2014, records also indicate that 85% of the angler-days of effort in the saltwater charter bottomfish fishery were conducted by nonresident anglers, 12% by residents, and 3% by crew fishing, comped anglers, or those of unknown residency (Tables 11–12).

In 2014, of the total number of angler-days fished, 68% of the salmon participation took place in Southeast and 32% in Southcentral. In 2014, coho and Chinook salmon made up 67% and 18% respectively of the harvest statewide, with the remaining 15% consisting of a combination of other salmon (Table 11). Within that same period, 48% of the bottomfish participation took place in Southeast, and 52% occurred in Southcentral (Table 12).

Of the bottomfish harvested in 2014, halibut were the most harvested species at 239,475 fish, making up 47% of the total bottomfish harvest statewide. Statewide, 29% of the halibut harvest occurred in Southeast and 71% occurred in Southcentral (Table 12). It should be noted that in Southeast, IPHC area 2C, anglers fishing from a charter vessel were limited to one halibut per day, whereas in Southcentral, IPHC area 3A, guided anglers were allowed two halibut per day in 2014.

Table 11.—Saltwater salmon effort and harvest by region and angler type, 2014.

Region <sup>a</sup>	Type of angler	Angler-days <sup>b</sup>	Chinook salmon		Coho	Sockeye	Other Salmon
			Large <sup>c</sup>	Small <sup>c</sup>			
Southeast	Resident	1,980	1,617	16	2,308	23	371
	Nonresident	108,541	51,641	996	180,050	816	44,867
	Comped	357	162	2	603	3	72
	Crew	876	3	0	1,738	22	305
	Unknown	632	110	9	476	1	333
	Total	112,386	53,533	1,023	185,175	865	45,948
Southcentral	Resident	11,457	1,324	213	11,046	105	1,047
	Nonresident	39,609	6,199	1,397	39,492	927	5,014
	Comped	443	45	13	266	4	33
	Crew	2,086	210	91	1,485	91	142
	Unknown	213	14	4	202	9	19
	Total	53,808	7,792	1,718	52,491	1,136	6,255
Total	Resident	13,437	2,941	229	13,354	128	1,418
	Nonresident	148,150	57,840	2,393	219,542	1,743	49,881
	Comped	800	207	15	869	7	105
	Crew	2,962	213	91	3,223	113	447
	Unknown	845	124	13	678	10	352
	Total	166,194	61,325	2,741	237,666	2,001	52,203

Note: Data are current as of 11/06/2015.

<sup>a</sup> Region is based on the port of offloading (or salmon and bottomfish statistical areas if port is not listed).

<sup>b</sup> Angler-days totals all anglers who fished on a day when a salmon statistical area was entered, plus angler-days where an angler harvested a salmon when a bottomfish statistical area was provided.

<sup>c</sup> Large Chinook salmon are 28 inches or longer; small are under 28 inches.

Table 12.—Saltwater bottomfish effort and harvest by species, region, and angler type, 2014.

Region <sup>a</sup>	Type of angler	Angler-days <sup>b</sup>	Rockfish						
			Halibut	Lingcod	Pelagic	Yelloweye	Non-Pelagic	Sablefish	Shark
Southeast	Resident	1,810	1,210	271	1,410	190	506	54	0
	Nonresident	97,548	67,995	5,989	105,939	10,588	31,339	6,889	11
	Comped	371	236	25	226	32	100	7	0
	Crew	882	6	0	436	0	12	21	0
	Unknown	329	144	12	200	26	85	12	0
	Total	100,940	69,591	6,297	108,211	10,836	32,042	6,983	11
Southcentral	Resident	23,979	38,021	2,094	17,272	2,249	2,220	63	1
	Nonresident	81,910	129,633	6,944	59,890	6,661	6,104	197	6
	Comped	879	1,285	91	701	82	81	6	0
	Crew	2,699	165	251	3,104	336	432	1	0
	Unknown	514	777	32	241	30	22	0	0
	Total	109,981	169,881	9,412	81,208	9,358	8,859	267	7
Total	Resident	25,789	39,231	2,365	18,682	2,439	2,726	117	1
	Nonresident	179,458	197,628	12,933	165,829	17,249	37,443	7,086	17
	Comped	1,250	1,521	116	927	114	181	13	0
	Crew	3,581	171	251	3,540	336	444	22	0
	Unknown	843	921	44	441	56	107	12	0
	Total	210,921	239,472	15,709	189,419	20,194	40,901	7,250	18

Note: Data are current as of 11/06/2015.

<sup>a</sup> Region is based on the port of offloading (or salmon and bottomfish statistical areas if port is not listed).

<sup>b</sup> Angler-days totals all anglers who fished on a day when a bottomfish statistical area was entered, plus angler-days where an angler harvested a bottomfish when a salmon statistical area was provided.

## FRESHWATER

In 2014, of all freshwater logbooks issued, 70% were activated. Records indicate that 9% of the freshwater participation occurred in Southeast, 81% occurred in Southcentral, and 10% took place in the Arctic-Yukon-Kuskokwim (AYK) region or interior Alaska (Table 13).

Angler-days of effort in 2014 indicate that 89% of the anglers in the freshwater guided fishery were nonresident anglers, 8% were residents, and 3% were crew fishing, comped anglers, or those of unknown residency. In Southeast, 93% of the guided/chartered fishing was conducted by nonresident anglers, 89% were nonresidents in Southcentral, and 91% of the anglers in AYK were nonresidents.

In 2014, sockeye, coho, and Chinook salmon were the predominant species harvested, making up 45%, 44%, and 6% respectively of the harvest statewide, with the remaining 4% consisting of a combination of other fish (Table 13).

Table 13.—Freshwater effort and harvest by species, region and angler type, 2014.

Region <sup>a</sup>	Type of angler	Angler-days	Salmon			Trout				Grayling	Dolly Varden	Northern Pike	Sheefish
			Chinook <sup>b</sup>	Coho	Sockeye	Cutthroat	Rainbow	Steelhead	Lake				
Southeast	Resident	320	0	310	41	0	0	0	0	0	4	0	0
	Nonresident	9,517	37	9,367	1,462	34	7	0	0	0	197	0	0
	Comped	2	0	1	0	0	0	0	0	0	0	0	0
	Crew	366	6	492	192	0	0	0	0	0	1	0	0
	Unknown	52	0	30	5	0	0	0	0	0	1	0	0
	Total	10,257	43	10,200	1,700	34	7	0	0	0	203	0	0
Southcentral	Resident	8,123	912	3,430	2,688	0	30	0	2	2	81	0	0
	Nonresident	84,396	6,613	35,868	47,672	3	329	4	68	163	1,327	215	0
	Comped	318	22	158	70	0	3	0	0	0	2	1	0
	Crew	1,539	32	317	693	0	7	0	0	0	51	0	0
	Unknown	627	33	223	267	2	1	0	0	1	6	1	0
	Total	95,003	7,612	39,996	51,390	5	370	4	70	166	1,467	217	0
Arctic-Yukon-Kuskokwim	Resident	588	75	71	128	0	28	0	0	22	55	8	1
	Nonresident	10,826	129	3,491	656	0	1,505	0	9	257	465	60	34
	Comped	60	0	0	11	0	4	0	1	0	3	3	0
	Crew	325	1	32	40	0	233	0	0	4	37	1	0
	Unknown	91	0	19	14	0	3	0	0	25	14	4	2
	Total	11,890	205	3,613	849	0	1,773	0	10	308	574	76	37
Total	Resident	9,031	987	3,811	2,857	0	58	0	2	24	140	8	1
	Nonresident	104,739	6,779	48,726	49,790	37	1,841	4	77	420	1,989	275	34
	Comped	380	22	159	81	0	7	0	1	0	5	4	0
	Crew	2,230	39	841	925	0	240	0	0	4	89	1	0
	Unknown	770	33	272	286	2	4	0	0	26	21	5	2
	Total	117,150	7,860	53,809	53,939	39	2,150	4	80	474	2,244	293	37

Note: Data are current as of 11/06/2015.

<sup>a</sup> Region is based on the area code of the site code listed on each logbook page.

<sup>b</sup> All Chinook salmon harvest is included, regardless of fish size.

## **DISCUSSION**

### **GUIDE AND BUSINESS LICENSING**

From 2005 through 2014, the ADF&G guide and business licensing process differed from the registration process in 2004 and prior in terms of the approach used, fees, and the information collected on license applications. The current licensing approach reflects changes made in 2005 to initiate the new minimum requirements established by HB 452. Guides and businesses offering guided fishing services are now held to a higher standard of compliance than previous to 2005. Violations of the guide licensing statutes or regulations adopted under HB 452 are either violations or misdemeanors, and courts are authorized to revoke the license of the guide or business under certain conditions, such as repeated convictions within a 3-year period.

ADF&G no longer collects the same information collected on pre-2005 applications regarding the type (saltwater vs. freshwater) and location (regions/subareas) of services. That information is available from logbook data. The 2005–2014 licensing processes have been similar and provide a basis for establishing a long-term database of licensed businesses and guides. Charter/guide business and guide licensing still reflects the intent to operate, whereas actual activity is confirmed by the submission of logbook trip data.

### **LOGBOOKS**

ADF&G initiated a mandatory saltwater charter logbook program in 1998. The BOF adopted regulations requiring logbook reporting and annual registration of sport fishing guides and businesses. The logbook and registration/licensing program was intended to provide information on actual participation and harvest by individual vessels and businesses.

Recent emphasis from ADF&G management staff and NPFMC on more timely saltwater data spurred discussions on how to hasten logbook data availability. Up until 2010, logbook data entry involved collecting logbook sheets from the guide, entering the logbook data into a logbook database, and editing the data. This process could take RTS from 6 to 8 weeks to complete.

Upon further discussion and research, an alternative approach was considered. In 2009, ADF&G programmers researched the option of developing a system that would electronically scan the image of a redesigned logbook data page. Scanned images would minimize data entry time but allow for data entry personnel to fix images flagged as unrecognizable, thus maintaining data accuracy and quality. This option is not any more “burdensome” to the industry and would probably make the weekly reporting requirement more palatable knowing that the data would be more immediately available.

In 2010, the saltwater logbook data page design change incorporated the ability to use the new scanning software. Due to first year design “glitches” and software troubleshooting, the 2010 saltwater data was not available in as timely a manner as originally hoped. A program review with office assistants (data entry personnel) and discussions with the project analyst programmer resulted in adjustments to the design format and software that were implemented in 2011 and continued to be applied through 2014.

In addition to the full implementation and use of the scanning software in 2011, ADF&G worked collaboratively with NMFS to modify the logbook requirements associated with the federal CHP program, a program that establishes limited access to the guided halibut fishery. Starting in 2011,

saltwater logbooks were designed to capture CHP numbers associated with the permits granted by NMFS to qualifying participants in the sport fish charter halibut fishery.

In July 2011, NOAA Fisheries proposed regulations to authorize GAF for the charter halibut fisheries in area 2C and area 3A within a CSP. ADF&G again worked with the NMFS to collect halibut kept data harvested under the proposed CSP as GAF by redesigning the logbook. Although the 2012 and 2013 saltwater logbooks were designed to capture GAF halibut, the federal GAF proposal was not in effect until 2014; the 2014 saltwater logbook was designed to capture GAF halibut information.

### **Consideration of an Electronic Reporting Option**

In late 2012, staff discussions included the possibility of an electronic submission option that would provide data to ADF&G and NPFMC staff in a more timely manner. Options and discussions were further brought up early in the 2014 legislative session. Electronic reporting options were, at first, perceived as a method to fulfill both ADF&G management needs and halibut management needs for more timely information. It was agreed that any option for a logbook change would have to include a design that is appealing and easy for the guide industry to use, such that they would perceive it as beneficial to a process that they already consider “burdensome.” Further discussions, however, concluded that due to enforcement and trip recording requirements, electronic reporting would still necessitate the use of a paper version of the logbook. Data would still need to be verified for errors, be entered accurately in a timely manner into a database, and be available for onsite inspection. There are currently no identified benefits to managers or the industry that would result from going “paperless”. In addition, the “paperless” approach would require a change in regulation for reporting requirements, along with extensive research into the cost of electronic reporting. The discussion for going “paperless,” however, is ongoing. Electronic reporting options were further discussed during the 2014 legislative session in reference to Senate Bill 79 (SB79). SB79, a Sport Fishing Guide Services bill, entertained the feasibility and possible future requirement of electronic reporting of logbook data. As a result, division staff designed a mail-out survey to query previously licensed charter business owners to determine the extent and interest the industry has in adopting electronic reporting options (Appendix G1).

In June 2013, a short 3-question survey was mailed to 1,275 guided sport fish business owners who were licensed in 2012; 41% or 526 responded to the postage paid survey. To assist with demography, sport fish business owners were asked if they provided freshwater, saltwater, or both types of services. They were then asked whether they would prefer electronic or paper options as a reporting mechanism if provided with both options. Based on their response to question #2, question #3 followed with a question on which method—electronic or paper—they would prefer if a paper logbook were still required at the time of landing.

In summary, those who provided saltwater only or both saltwater and freshwater services preferred using the paper version of the logbook to report their activity. Freshwater operators were split between both paper and electronic options. It was understandable that freshwater operators were split on their preference when considering the remote nature of many these businesses.

With the inability to speculate on the future of the electronic reporting design, the survey had to be designed to encompass the broadest possible scenarios, including the possibility that operators may still have to maintain a paper logbook while in the field and then choose to either

electronically submit the trip information or submit the paper logbook page. The final question on the survey asked the operator if he or she would choose to file electronically or by paper if a paper logbook were still required to be completed at the time of landing.

Of the 526 respondents, 61% indicated that if a paper logbook were required at the time of landing, they would prefer to submit that data page rather than translate the information into an electronic format. The suggestion that a paper logbook may still be required at the time of landing seems to diminish the enthusiasm for electronic reporting.

Survey responses were summarized in September 2014 and made available to the division director in time for the 2014 legislative session. It became clear during evaluation of the survey summary that any development of an electronic reporting program would still have to include a paper logbook option.

### **Verification of Logbook Harvest Data**

Preliminary results from verification studies comparing the accuracy of logbook harvest data with the statewide harvest survey estimates and onsite creel programs are favorable (Meyer and Powers 2009). Logbook data will continue to be compared to counts from these programs. Comparisons are ongoing and are part of a more comprehensive evaluation of logbook data quality. Saltwater and freshwater logbook data have also been used for a variety of regulatory analyses for state-managed species. With the federal adoption of the CSP, the saltwater logbook has become the standard measurement tool used by the NPFMC for halibut management.

## **ACKNOWLEDGEMENTS**

Southeast and Southcentral regional and area staff, especially numerous front counter personnel, have been critical to the success of the ADF&G sport fishing guide and business licensing and logbook program. The above staff along with Bob Chadwick and Mike Jaenicke from Southeast; Scott Meyer, Matt Miller, and Tom Vania from Southcentral; and Tom Taube from Fairbanks have also provided valuable comments during the process of licensing and logbook form design.

Jim Hasbrouck's thoughtful insight and direction has been very much appreciated.

Kirk Brogdon of the division's Research and Technical Services section deserves considerable credit for designing and implementing efficient information management systems for data capture, scanning, cleaning, storage, and reporting.

Kathy Kush and Cindy Palmatier should be acknowledged for their incredible skills in streamlining the licensing process and making sure that all license applications are processed in a timely manner that has allowed the guides and businesses to start operation without delay.

Diane Novinska, Raili Kedzior, Andrea Hamby, and Michaela Young deserve credit for receiving, editing, scanning, entering, and filing the licensing and logbooks forms. Their knowledge has enhanced public relations critical to maintaining a relationship with the industry and encouraging compliance. With their perseverance, we've continued to meet reporting deadlines that seemed nearly impossible with available staffing and workloads.

We also acknowledge the cooperation of the thousands of sport fishing guides and sport fishing businesses that licensed and completed their logbooks in a timely and compliant manner.

## REFERENCES CITED

- Chapell, R. S. 2010. Production, escapement, and juvenile tagging of Chilkat River Chinook salmon in 2007. Alaska Department of Fish and Game, Fishery Data Series No. 10-86, Anchorage. <http://www.sf.adfg.state.ak.us/FedAidpdfs/FDS10-86.pdf>
- Dean, M. R. 2001. Alaska Department of Fish and Game sportfishing guide and business registration and saltwater sportfishing charter vessel logbook program, 1999. Alaska Department of Fish and Game, Special Publication No. 01-1, Anchorage. <http://www.sf.adfg.state.ak.us/FedAidPDFs/sp01-01.pdf>
- Dean, M. R., and A. L. Howe. 1999. Alaska Department of Fish and Game sportfishing guide and business registration and saltwater sportfishing charter vessel logbook program, 1998. Alaska Department of Fish and Game, Special Publication No. 99-1, Anchorage. <http://www.sf.adfg.state.ak.us/FedAidPDFs/sp99-01.pdf>
- Jennings, G. B., K. Sundet, and A. E. Bingham. 2011. Estimates of participation, catch, and harvest in Alaska sport fisheries during 2010. Alaska Department of Fish and Game, Fishery Data Series No. 11-60, Anchorage. <http://www.adfg.alaska.gov/FedAidpdfs/FDS11-60.pdf>
- Meyer, S. and R. Powers. 2009. Evaluation of Alaska charter logbook data for 2006-2008. Discussion paper for the North Pacific Fishery Management Council, September 21, 2009. Alaska Department of Fish and Game, Anchorage. <http://www.npfmc.org/wp-content/PDFdocuments/halibut/logbookeval909.pdf>
- Sigurdsson, D. 2014. Alaska Department of Fish and Game statewide freshwater guided sport fishing logbook reporting program, 2014–2016. Alaska Department of Fish and Game, Division of Sport Fish, Regional Operational Plan ROP.SF.4A.2014.02, Anchorage. <http://www.adfg.alaska.gov/FedAidpdfs/ROP.SF.4A.2014.02>
- Sigurdsson, D., and B. Powers. 2014. Participation, effort, and harvest in the sport fish business/guide licensing and logbook programs, 2013. Alaska Department of Fish and Game, Fishery Data Series No. 14-23, Anchorage. <http://www.adfg.alaska.gov/FedAidPDFs/FDS14-23.pdf>
- Sigurdsson, D., and B. Powers. 2013. Participation, effort, and harvest in the sport fish business/guide licensing and logbook programs, 2012. Alaska Department of Fish and Game, Fishery Data Series No. 13-37, Anchorage. <http://www.adfg.alaska.gov/FedAidPDFs/FDS13-37.pdf>
- Sigurdsson, D., and B. Powers. 2012. Participation, effort, and harvest in the sport fish business/guide licensing and logbook reporting programs, 2011. Alaska Department of Fish and Game, Fishery Data Series No. 12-27, Anchorage. <http://www.adfg.alaska.gov/FedAidPDFs/FDS12-27.pdf>
- Sigurdsson, D., and B. Powers. 2011. Participation, effort, and harvest in the sport fish business/guide licensing and logbook reporting programs, 2010. Alaska Department of Fish and Game, Fishery Data Series No. 11-31, Anchorage. <http://www.sf.adfg.state.ak.us/FedAidPDFs/FDS11-31.pdf>
- Sigurdsson, D., and B. Powers. 2010. Participation, effort, and harvest in the sport fish business/guide licensing and logbook reporting programs, 2009. Alaska Department of Fish and Game, Fishery Data Series No. 10-65, Anchorage. <http://www.sf.adfg.state.ak.us/FedAidPDFs/FDS10-65.pdf>
- Sigurdsson, D., and B. Powers. 2009. Participation, effort, and harvest in the sport fish business/guide licensing and logbook reporting programs, 2006-2008. Alaska Department of Fish and Game, Special Publication No. 09-11, Anchorage. <http://www.sf.adfg.state.ak.us/FedAidPDFs/SP09-11.pdf>
- Wendt, K. L., and M. J. Jaenicke. *In prep.* Harvest estimates for selected marine sport fisheries in Southeast Alaska during 2010. Alaska Department of Fish and Game, Fishery Data Series, Anchorage.



**APPENDIX A.**  
**SPORT FISH BUSINESS OWNER/GUIDE LICENSE**  
**APPLICATION**



## 2014 SPORT FISH BUSINESS OWNER/ GUIDE LICENSE APPLICATION

Alaska Department of Fish and Game / Division of Sport Fish - RTS  
333 Raspberry Road, Anchorage, Alaska 99518-1565  
Telephone: (907)267-2369 or (907)267-2390  
<http://www.adfg.alaska.gov/index.cfm?adfg=prolicenses.sportfishguides>

**LICENSE #**

This TEMPORARY LICENSE is good for 21 business days from date signed by ADFG Representative		
<b>FEES CHECK ONE:</b> <u>All fees are nonrefundable</u> <input type="checkbox"/> \$50.00 Guide Only License <input type="checkbox"/> \$100.00 Business Only License <input type="checkbox"/> \$100.00 Combined Business/Guide License* <small>*An agent for this business cannot apply as a guide on a combination license</small> <input type="checkbox"/> \$50.00 Guide Only Upgrade to Combination Business/Guide License	<b>METHOD OF PAYMENT:</b> <u>All fees are nonrefundable</u> <input type="checkbox"/> Check # : _____ <small>Make payable to "State of Alaska"</small> <input type="checkbox"/> Money Order # : _____ <input type="checkbox"/> Cash (Anchorage, Juneau, Fairbanks offices <u>ONLY</u> ) <input type="checkbox"/> Credit Card (Anchorage, Juneau, Fairbanks offices <u>ONLY</u> )	APPLICATION MUST BE STAMPED BY ADF&G TO BE VALID
<b>INSTRUCTIONS TO COMPLETE FORM ON REVERSE</b>		
<b>SECTION A: ALL APPLICANTS COMPLETE THIS SECTION</b>		
Name of Business Owner or Guide: _____ <div style="text-align: center;"><small>Last First MI</small></div> Permanent Mailing Address : _____ <div style="text-align: center;"><small>PO Box or Street Address City State Zip</small></div> Telephone Number: ( ) _____ In season Telephone Number: ( ) _____ Mail License Here: _____ <div style="text-align: center;"><small>(if different than above) PO Box or Street Address City State Zip</small></div>		
<b>SECTION B: TO BE FILLED OUT BY THE BUSINESS OWNER OR THEIR AGENT</b>		
<b>BUSINESS INFORMATION:</b> Name of Business: _____ Name of Business Owner: _____ State of Alaska Business License Number: _____ Expiration Date: <u>Mo/Date/Yr</u> <b>INSURANCE:</b> See detailed insurance requirements on back. Name of Insurance Company: _____ Policy/Binder #: _____ Effective Dates: From: _____ To: _____ Remember to get a logbook for your business at the nearest ADF&G office prior to commencement of guiding activities!		
<b>SECTION C: TO BE FILLED OUT BY GUIDE OR THEIR AGENT</b>		
Are you a citizen of the United States, Canada, Mexico or a resident alien? Yes <input type="checkbox"/> No <input type="checkbox"/> Basic First Aid Information: Certifying agency: _____ Exp. Date: <u>Mo / Yr</u> 2014 Alaska Sport Fishing License # : _____ Date of Birth: <u>Mo/Date/Yr</u> <b>U.S. COAST GUARD OPERATOR'S LICENSE:</b> (See explanation on back) Do you plan to operate a motorized vessel in Navigable Waters? Yes <input type="checkbox"/> No <input type="checkbox"/> <b>If yes, complete the next line.</b> USCG License # or Merchant Mariner Credential Doc #: <u>USA</u> Exp. Date: <u>Mo/Date/Yr</u>		
<b>SIGNATURE OF BUSINESS OWNER/AGENT or GUIDE:</b> I hereby certify that all information is true and correct and that I understand this information is subject to public disclosure. (NOTE: Making a false statement or omitting a material fact, is subject to a maximum penalty of \$10,000 or 1 year imprisonment, or both, per AS 11.56.210.) X _____ Circle one: Applicant or Agent Date: _____		
This temporary license must be signed and stamped by an ADF&G employee and in your possession before guiding activities begin.		
Name of ADF&G Representative (print): _____ Date: _____ Signature: _____ Place of Issue: _____		

Bottom Copy To Applicant

-continued-



## INSTRUCTIONS FOR THE 2014 SPORT FISH BUSINESS OWNER/GUIDE LICENSE APPLICATION

**Attention:** *The following will apply without exception:*

1. All applicable sections of the license application must be complete and legible prior to ADF&G validation. No "pending", "unknowns," or blanks will be accepted.
2. Incomplete license applications will be returned resulting in a processing delay.
3. A signature is required.
4. This is a license application only. A post card sized annual license will be mailed within 21 business days.
5. There may be requirements by other state and federal agencies to operate as a guide in Alaska.

### **INSTRUCTIONS:**

**SECTION A:** ALL applicants must complete this section.

**SECTION B: BUSINESS OWNER OR THEIR AGENT:** Complete this section if you are the owner/agent of the sport fishing business. This section should be filled out even if the owner does not intend to personally guide clients. An agent for this business **CANNOT** apply as a guide on the same application. A separate license application must be submitted.

**LIABILITY INSURANCE REQUIREMENT:** General liability or marine protection that covers at least \$100,000 for each incident and \$300,000 for all incidents in a year. Insurance must cover **ALL** periods of time when the owner or owner's employees are providing sport fishing services to clients. Insurance must be current, **NOT** pending.

#### **IMPORTANT NOTICE TO BUSINESS OWNERS**

State regulation (5 AAC 75.075) requires that all operators providing sport fishing guide services in Alaska must apply annually for a license with the Department of Fish and Game **before** guiding services begin. Business owners are required to register all charter vessels with ADF&G and acquire a logbook prior to commencement of guiding activities. ***Guides hired by an operator must be provided with a copy of the ADF&G business license to have in their possession while guiding.***

**SECTION C: GUIDES:** Complete this section if you intend to guide for a sport fish operation owned by someone other than you or if you are the business owner who also intends to guide (owner/operator).

**U.S. COAST GUARD OPERATOR'S LICENSE:** A licensed sport fish guide **must** have, at minimum, a Limited OUPV for Western Waters in Alaska or 6-pak U.S.C.G. operator's license in their possession while operating a motorized vessel with clients or transporting clients in a motorized vessel on navigable waters. Navigable waters are determined by the U.S. Coast Guard (907) 271-6700.

**Note:** Effective April 20, 2009 the U.S.C.G. began issuing the Merchant Mariner Credentials (MMC). Applicants must provide their U.S.C.G. license number, expiration date and date of birth (DOB).

#### **IMPORTANT NOTICE TO GUIDES**

State regulation (5 AAC 75.075) requires that all licensed guides providing sport fishing guide services in Alaska must apply annually for a license with the Department of Fish and Game **before** guiding activities begin.

#### **WHAT A GUIDE MUST HAVE IN POSSESSION WHILE GUIDING**

A sport fish business owner or guide should be able to present all documents required for licensing upon request by a representative of the department of fish and game, or any peace officer of the state. While engaged in providing sport fishing guide services, a sport fishing guide shall have the following readily available for inspection:

- A current sport fishing guide license;
- A copy of the current ADF&G sport fishing business license of the guide's employer;
- A current Alaska sport fishing license, tags, stamps or permits that are required to engage in the sport fishery for which the guide services are providing;
- An identification card issued to the sport fishing guide by a state or federal agency that bears a photo of the sport fishing guide.



**APPENDIX B.**  
**SALTWATER LOGBOOK FORM**



# State of Alaska

## Department of Fish & Game

### Division of Sport Fish

#### 2014 Saltwater Charter Logbook and Vessel Registration

*Vessel*

*Name:* \_\_\_\_\_

*Vessel AK. No.*

*or*

*U.S.C.G No.:* \_\_\_\_\_

*ALL CHARTER TRIP ACTIVITY CONDUCTED FROM THIS VESSEL MUST BE  
RECORDED WITHIN THE LOGBOOK ASSIGNED TO THIS VESSEL*

*Federal rules require that the Charter Halibut Permit (CHP) number(s) be recorded in the  
logbook before the beginning of any trip during which halibut are caught and retained.*

**CHP No:**

**CHP HOLDER:**

_____
_____
_____
_____

_____
_____
_____
_____

**Please follow the INSTRUCTIONS carefully as they have changed**

#### LOGBOOK INSPECTION

**This logbook must be presented for inspection, upon request, to any representative of the Department of Fish and Game, peace officer of the state, or law enforcement representative of the National Marine Fisheries Service.**

-continued-



Alaska Department of Fish &amp; Game

**2014 Saltwater Sport Fishing Charter Trip Logbook Page**

RETURN TO: 333 RASPBERRY ROAD, ANCHORAGE, ALASKA 99518-1565 • QUESTIONS: CALL (907) 267- 2369

**140000-01**

LOGBOOK PAGE

**TRIP INFORMATION**

➡ Complete this section for every trip. Continue on additional pages for trips with more than six anglers in the same trip.

➡ DATE FISHED: \_\_\_\_\_ / \_\_\_\_\_ 2014 ☐ AM ☐ PM  
Month Day Hour Trip Ended

➡ 2014 GUIDE LICENSE NUMBER: \_\_\_\_\_  
(assigned to you by ADF&G)

➡ CHARTER HALIBUT PERMIT (CHP) NUMBER: \_\_\_\_\_  
(assigned to you by NOAA)

Check box if more than one CHP is used on this trip: ☐

FOR OFFICE USE ONLY  
 \_\_\_\_\_  
 Total Anglers

➡ TARGETED SPECIES / LOCATION FISHED:  
(where most fish species were caught)

Salmon: \_\_\_\_\_  
Primary Statistical Area Hours Fished

Bottomfish: \_\_\_\_\_  
Primary Statistical Area Hours Fished

➡ COMMUNITY OR PORT WHERE TRIP ENDED:  
(where fish or clients were off-loaded from vessel)

➡ GUIDED ANGLER FISH (GAF) PERMIT NUMBER:  
(assigned to you by NOAA)

**INDIVIDUAL ANGLER AND CATCH INFORMATION**

Complete one row below for each angler who fished this trip.  
 Record sport fishing license number, printed name AND Alaska residency status for all anglers.  
 Write "YOUTH" in license number field for anglers under 16.

	AK Resident	Non - Resident	Comped	Captain or Crew	Kept / Released	SALMON					BOTTOMFISH							
						King (28" & larger)	King (under 28")	Coho	Sockeye	Other Salmon	Halibut	GAF Halibut	Lingcod	Pelagic Rockfish	Yelloweye Rockfish	Non-pelagic Rockfish (except Yelloweye)	Sablefish (Black Cod)	Salmon Shark
1. _____ License Number _____ First Name / Last Name _____ Signature	<input type="radio"/>	<input type="radio"/>	<input type="radio"/>	<input type="radio"/>	K▶ <input type="checkbox"/>	<input type="checkbox"/>	<input type="checkbox"/>	<input type="checkbox"/>	<input type="checkbox"/>	<input type="checkbox"/>	<input type="checkbox"/>	<input type="checkbox"/>	<input type="checkbox"/>	<input type="checkbox"/>	<input type="checkbox"/>	<input type="checkbox"/>	<input type="checkbox"/>	<input type="checkbox"/>
2. _____ License Number _____ First Name / Last Name _____ Signature	<input type="radio"/>	<input type="radio"/>	<input type="radio"/>	<input type="radio"/>	K▶ <input type="checkbox"/>	<input type="checkbox"/>	<input type="checkbox"/>	<input type="checkbox"/>	<input type="checkbox"/>	<input type="checkbox"/>	<input type="checkbox"/>	<input type="checkbox"/>	<input type="checkbox"/>	<input type="checkbox"/>	<input type="checkbox"/>	<input type="checkbox"/>	<input type="checkbox"/>	<input type="checkbox"/>
3. _____ License Number _____ First Name / Last Name _____ Signature	<input type="radio"/>	<input type="radio"/>	<input type="radio"/>	<input type="radio"/>	K▶ <input type="checkbox"/>	<input type="checkbox"/>	<input type="checkbox"/>	<input type="checkbox"/>	<input type="checkbox"/>	<input type="checkbox"/>	<input type="checkbox"/>	<input type="checkbox"/>	<input type="checkbox"/>	<input type="checkbox"/>	<input type="checkbox"/>	<input type="checkbox"/>	<input type="checkbox"/>	<input type="checkbox"/>
4. _____ License Number _____ First Name / Last Name _____ Signature	<input type="radio"/>	<input type="radio"/>	<input type="radio"/>	<input type="radio"/>	K▶ <input type="checkbox"/>	<input type="checkbox"/>	<input type="checkbox"/>	<input type="checkbox"/>	<input type="checkbox"/>	<input type="checkbox"/>	<input type="checkbox"/>	<input type="checkbox"/>	<input type="checkbox"/>	<input type="checkbox"/>	<input type="checkbox"/>	<input type="checkbox"/>	<input type="checkbox"/>	<input type="checkbox"/>
5. _____ License Number _____ First Name / Last Name _____ Signature	<input type="radio"/>	<input type="radio"/>	<input type="radio"/>	<input type="radio"/>	K▶ <input type="checkbox"/>	<input type="checkbox"/>	<input type="checkbox"/>	<input type="checkbox"/>	<input type="checkbox"/>	<input type="checkbox"/>	<input type="checkbox"/>	<input type="checkbox"/>	<input type="checkbox"/>	<input type="checkbox"/>	<input type="checkbox"/>	<input type="checkbox"/>	<input type="checkbox"/>	<input type="checkbox"/>
6. _____ License Number _____ First Name / Last Name _____ Signature	<input type="radio"/>	<input type="radio"/>	<input type="radio"/>	<input type="radio"/>	K▶ <input type="checkbox"/>	<input type="checkbox"/>	<input type="checkbox"/>	<input type="checkbox"/>	<input type="checkbox"/>	<input type="checkbox"/>	<input type="checkbox"/>	<input type="checkbox"/>	<input type="checkbox"/>	<input type="checkbox"/>	<input type="checkbox"/>	<input type="checkbox"/>	<input type="checkbox"/>	<input type="checkbox"/>

Form 11-540 (01-2014)

CERTIFICATION: I certify that the information provided herein is accurate and true. Falsification or omission of information on this form is punishable under AS 11.66.210(a) and 5 AAC 75.076.

X

GUIDE SIGNATURE

PAGE

OF

■





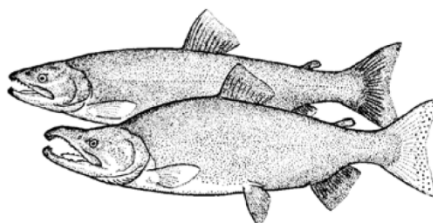
**APPENDIX C.**  
**FRESHWATER LOGBOOK FORMS**

# 2014 Freshwater Sport Fish Guide Logbook and Vessel Registration

LOGBOOK NO. \_\_\_\_\_

\_\_\_\_\_  
BUSINESS NAME

\_\_\_\_\_  
ADF&G BUSINESS OWNER'S LICENSE NO.



*Please follow the instructions carefully  
as they have changed.*



**State of Alaska Department of Fish & Game  
Division of Sport Fish**

## **LOGBOOK INSPECTION**

*Upon request from any representative  
of the Department or any peace officer of the state,  
a person is required to present this Alaska Department  
of Fish and Game Freshwater Sport Fishing  
Guide Logbook for inspection.*

---

-continued-



Alaska Department of Fish &amp; Game

**2014 Freshwater Sport Fish Trip Logbook**

RETURN TO: 333 RASPBERRY ROAD, ANCHORAGE, AK 99518-1565 • QUESTIONS: (907) 267-2369

LOGBOOK NO. \_\_\_\_\_

TRIP INFORMATION	Angler Residency		Sport Fish License Number of each Client, Nonpaying angler, and Crew <b>THAT FISHED</b> AND Record all those anglers under 16 as "Youth Angler" (YA1, YA2etc.)	Circle One if applicable		SALMON			TROUT			OTHER							
	Resident <i>Circle One</i>	Non-Resident		Comped	Crew	KEPT	RELEASED	KING	COHO	SOCKEYE	CUTTHROAT	RAINBOW	STEELHEAD	LAKE TROUT	DOLLY VARDEN / ARCTIC CHAR	ARCTIC GRAYLING	NORTHERN PIKE	SHEEFISH	*
2014 ADF&G GUIDE LICENSE #: _____	<i>R</i>	<i>N</i>		X	C	K					KEPT								
DATE FISHED: _____, 2014 (Month) (Day)	<i>R</i>	<i>N</i>		X	C	K					KEPT								
RIVER / STREAM / LAKE (SPECIFY) _____	<i>R</i>	<i>N</i>		X	C	K					KEPT								
SITE CODE (REFER TO SITE CODE LIST) _____	<i>R</i>	<i>N</i>		X	C	K					KEPT								
PAGE NO. _____ OF _____	<i>R</i>	<i>N</i>		X	C	K					KEPT								
TOTAL NO. OF PAGES FOR THIS TRIP ↑	<i>R</i>	<i>N</i>		X	C	K					KEPT								
* WRITE IN OTHER SPECIES HERE	<i>R</i>	<i>N</i>		X	C	K					KEPT								
	<i>R</i>	<i>N</i>		X	C	K					RELEASED								

CERTIFICATION: I certify that the information provided herein is accurate and true. Falsification or omission of information on this form is punishable under AS 11.56.210(a) and 5 AAC 75.076.

**X**

GUIDE SIGNATURE

CONTINUE ON NEXT PAGE IF MORE THAN 8 ANGLERS.  
CHECK IF TRIP INFORMATION IS CONTINUED ON NEXT PAGE: ☐



**APPENDIX D.**  
**VESSEL REGISTRATION FORMS, DECALS, AND TAGS**



## **INSTRUCTIONS FOR ADF&G REPRESENTATIVE:**

Please forward the **white** copy of this form to: **Sport Fish RTS, 333 Raspberry Rd., Anchorage, AK 99518-1565.**

**DO NOT REMOVE THE PINK COPY. THE PINK COPY MUST STAY IN THE LOGBOOK.**

**DO NOT ISSUE A LOGBOOK UNLESS THE APPLICANT HAS THE FOLLOWING:**

- ☐ **2014 ADF&G Sport Fish Business License**
- ☐ **Current AK Vessel No. issued by DMV or Current U.S.C.G. Vessel Documentation No.**

**NONE OF THE ABOVE CAN BE "PENDING"**

2014 ADF&G Sport Fish Business Owner and Guide License applications are available at all ADF&G offices or online at: <http://www.adfg.alaska.gov/index.cfm?adfg=prolicenses.sportfishguides>

AK Vessel Registration information is available from Alaska Division of Motor Vehicles at (907) 269-5551 or online at: <http://www.doa.alaska.gov/dmv/reg/boat.htm>

## **2014 Saltwater Sport Fish Charter Logbook Sign-Out AND Vessel Registration** *Must be completed*

### **SPORT FISH BUSINESS INFORMATION:**

Name of Sport Fishing Business: \_\_\_\_\_

ADF&G Sport Fish Business License No.: **2014-** \_\_\_\_\_

### **SPORT FISHING CHARTER VESSEL REGISTRATION:**

☐ **DMV issued AK No. or U.S.C.G. Vessel Documentation No.:** \_\_\_\_\_  
*(A logbook WILL NOT be issued without a current AK or U.S.C.G. No.)*

☐ **Vessel Name:** \_\_\_\_\_  
*(Vessel Name and AK No. or U.S.C.G. No. must appear on the cover)*

☐ **Primary Alaska Saltwater port from which this vessel will operate during 2014:**

\_\_\_\_\_

#### **DEPARTMENT USE ONLY**

☐ **Did you issue a Stat. Area Map?** YES ☐ NO ☐ If No, Explain:

☐ **ADF&G Representative: (print)** \_\_\_\_\_

☐ **Area Office:** \_\_\_\_\_ **Date of Issue:** \_\_\_\_\_

LOGBOOK NO.

## 2014 FRESHWATER SPORT FISH GUIDE

## Vessel Registration

**NOTE TO ADF&G REPRESENTATIVE**

Confirm that the vessel information requested on the bottom of this page is complete. Every vessel that this business is intending to operate while providing sport fishing guided services, must be recorded.

**Attach the white (top) copy of this page to the sign-out sheet, whether or not there are registered vessels. Mail the sign-out sheet and the vessel registration page to the Anchorage ADF&G RTS office at 333 Raspberry Rd., Anchorage, AK 99518-1565.**

## REGISTERING YOUR VESSEL(S)

For each vessel you plan to use to conduct sport fishing guided activities, please fill out the information below.

If a vessel is newly purchased, leased or borrowed at anytime during the guiding season, it must have a current AK Boat Number **or** a U.S.C.G. documentation number. If a vessel is added during the season, call the local ADF&G office or (907) 267-2369.

For purposes of vessel registration, vessels are defined as: **rafts, canoes, kayaks, motorized and nonmotorized water vehicles.**

**Registration Exemption:** Personal Float Tubes.

### MULTIPLE LOGBOOKS?

**Note logbook number where vessel information has been provided:**

[illegible]

Continue on another sheet if you have more vessels. Transfer the business name and logbook number onto that extra sheet.

Appendix D3.—Vessel decal, 2014.



Appendix D4.—Vessel tab, 2014.





**APPENDIX E.**  
**SALTWATER EDITING RESULTS**

Appendix E1.–Saltwater editing results, 2014.

Edit	Number of occurrences
No guide license number	10
Invalid guide license number	1
Missing date	0
Invalid date (not in correct year)	0
Invalid port of offloading	1
Missing salmon statistical area	16
Missing bottomfish statistical area	31
Invalid salmon statistical area	12
Invalid bottomfish statistical area	32
Salmon harvest no salmon statistical area	1,077
Bottomfish harvest no bottomfish statistical area	1,975
Salmon statistical area listed, no hours listed	429
Bottomfish statistical area listed, no hours listed	571
No statistical area listed	59
No hours listed	43
Possible invalid salmon statistical area	0
Possible invalid bottomfish statistical area	0
Log pages turned in late <sup>a</sup>	3,351
Log book wasn't checked out to a business	0
Salmon or bottomfish hours are greater than 12	47
Duplicate log pages	0
Trip records without any angler records	0
Date fished greater than date received by ADF&G	1
Total saltwater trips	50,152

<sup>a</sup> Late includes an additional 7-day grace period.



**APPENDIX F.**  
**FRESHWATER EDITING RESULTS**

Appendix F1.–Freshwater editing results, 2014.

Edit	Number of occurrences
No guide license number	0
Invalid guide license number	3
Missing date	0
Invalid date (not in correct year)	0
Missing site code	0
Invalid site code	0
Log pages turned in late <sup>a</sup>	6,293
Duplicate log pages	0
Date fished greater than date received by ADF&G	83
Log book wasn't checked out to a business	0
Kenai River trips on Sunday or Monday	334
Trip records without any angler records	0
Total freshwater trips	40,152

<sup>a</sup> Late includes an additional 7-day grace period.



**APPENDIX G.**  
**ELECTRONIC REPORTING SURVEY**

Alaska Dept. of Fish and Game  
Sport Fish RTS - Logbook Survey  
333 Raspberry Rd.  
Anchorage, AK 99518-1599



**ANGLER ADDRESS**



**2013 ELECTRONIC LOGBOOK REPORTING SURVEY**

Alaska Department of Fish and Game, Division of Sport Fish  
333 Raspberry Rd, Anchorage Alaska 99518

1. What type of Sport Fish Charter/Guide services do you provide?  
(Please check one)  
Saltwater ☐ Freshwater ☐ Both ☐
2. If electronic reporting of charter trip information was available as an option to paper logbooks, which reporting mechanism would you prefer to use?  
(Please check one)  
Electronic Reporting ☐ Paper Logbook ☐
3. If you were still required to complete a paper logbook at the time of landing, but could choose to either submit the paper logbook sheet or file an electronic report, which would you choose to do most often?  
(Please check one)  
File electronic report ☐ Submit paper logbook sheet ☐

***Please Return Survey by September 15, 2013***

-continued-

**Dear Charter/Guide Business Owner,**

During the 2013 legislative session, there was a discussion in reference to SB79, the Sport Fishing Guide Services bill, with regard to the feasibility and possible requirement of electronic reporting of logbook data.

With this brief survey, the Alaska Dept. of Fish and Game, Division of Sport Fish is asking the guide industry for feedback on an electronic logbook option.

At this time, it is too early to speculate on the electronic reporting design, confidentiality of data or how it might affect the requirement for a paper version of the logbook. Those issues will be discussed in greater detail at a later date. We recognize that some businesses and guides will be unable to take advantage of electronic reporting due to location or aspects of their business model.

The Alaska Department of Fish and Game, Division of Sport Fish appreciates the time you'll take to fill out this short survey. Additional comments can be e-mailed to: [dfg.dsf.guides@alaska.gov](mailto:dfg.dsf.guides@alaska.gov)

Tear Here



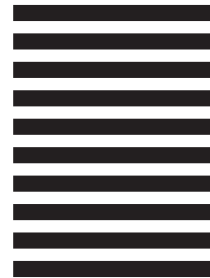
NO POSTAGE  
NECESSARY  
IF MAILED  
IN THE  
UNITED STATES

**BUSINESS REPLY MAIL**

FIRST-CLASS MAIL PERMIT NO. 92 ANCHORAGE AK

POSTAGE WILL BE PAID BY ADDRESSEE

ALASKA DEPARTMENT OF FISH AND GAME  
SPORT FISH RTS-E-LOGBOOK SURVEY  
333 RASPBERRY RD  
ANCHORAGE AK 99518-9960







**APPENDIX H.**  
**FRESHWATER LOGBOOK SUMMARIES BY AREA AND**  
**SITE**

Appendix H1.—Freshwater logbook participation by area and site, Southeast Alaska, 2014.

Area	Site	Businesses <sup>a</sup>	Guides <sup>a</sup>	Trips	Angler-Days					
					Resident	Non-Res	Comped	Unknown	Crew	Total
A	Lakes and streams	4	7	63	0	161	0	7	0	168
B	Thorne River and Lake	4	8	49	3	112	0	1	0	116
B	Other lakes and streams	9	17	114	5	248	0	0	0	253
C	Lakes and streams	8	14	97	11	263	0	0	0	274
D	Baranof Island streams and lakes	9	31	193	4	607	1	3	3	618
D	Chichagof Island streams and lakes	6	10	11	0	31	0	0	0	31
D	Eva Lake and Stream (Baranof Island)	6	15	40	3	162	0	1	2	168
D	Katlian River (Baranof Island)	4	8	40	1	116	0	1	0	118
D	Nakwasina Sound streams (Baranof Island)	7	11	55	0	189	0	8	1	198
D	Plotnikof system stream and lake (Baranof Island)	4	4	13	0	33	0	0	0	33
D	Politofski Creek (Baranof Island)	4	5	13	1	38	0	0	1	40
D	Rezanof system stream and lakes (Baranof Island)	5	5	8	0	25	0	0	1	26
D	Sitkoh Creek and Lake (Chichagof Island)	4	5	17	5	45	0	0	0	50
D	Other lakes and streams	9	17	57	6	181	0	0	2	189
E	Admiralty Island streams (Admiralty Island)	7	30	176	6	740	1	3	1	751
E	Other lakes and streams	7	21	213	13	995	0	2	2	1,012
F&G	Lakes and streams	9	14	187	1	685	0	13	9	708
H	Situk River (above weir)	5	18	539	95	1,164	0	3	169	1,431
H	Situk River (below weir)	5	7	27	3	64	0	1	21	89
H	Tsiu River	5	23	534	118	1,981	0	6	96	2,201
H	Other streams	10	24	423	45	1,677	0	3	58	1,783
Total Southeast		59	156	2,869	320	9,517	2	52	366	10,257

*Note:* Responses with fewer than 4 businesses are not reported separately, to protect confidentiality of respondents. Data are current as of 11/09/2015.

<sup>a</sup> Regional and statewide business and guide totals are not additive because a business and/or guide can operate in multiple sites and areas.

Appendix H2.—Freshwater logbook participation by area and site, Southcentral Alaska, 2014.

Area	Site	Businesses <sup>a</sup>	Guides <sup>a</sup>	Trips	Angler-Days					Total
					Resident	Non-Res	Comped	Unknown	Crew	
J	East Prince William Sound lakes and streams	4	11	112	27	504	1	0	12	544
J	Other lakes and streams	7	9	44	11	180	0	1	3	195
K	Little Susitna River	5	7	134	162	354	4	2	34	556
K	Little Susitna River above weir	4	6	124	137	320	0	1	11	469
K	Other lakes and streams	4	4	21	14	41	2	0	5	62
M	Chunilna Creek (Clear Creek)	5	13	207	34	807	0	2	3	846
M	Deshka River (Kroto Creek) above weir	5	5	65	14	162	0	0	2	178
M	Deshka River (Kroto Creek) below weir	11	14	266	332	689	0	6	3	1,030
M	Eightmile Creek	4	5	15	5	38	0	0	0	43
M	Fish Lake Creek and Fish Lakes (Yentna drainage)	4	10	19	0	45	0	0	0	45
M	Indian Creek (into Yentna near Fish Lakes)	4	9	75	0	284	0	0	2	286
M	Lake Creek	14	50	995	65	2,639	3	2	26	2,735
M	Little Willow Creek	4	4	19	15	42	0	1	6	64
M	Talachulitna Creek	4	6	50	1	88	0	1	0	90
M	Talachulitna River	8	15	259	36	761	0	1	2	800
M	Talkeetna River	7	19	377	163	1,362	0	21	3	1,549
M	Yentna River drainage (remainder)	14	33	330	4	991	1	0	21	1,017
M	Other Chulitna /East Susitna drainage lakes and streams	12	13	34	12	101	0	0	2	115
M	Other West Susitna drainage lakes and streams	5	9	39	17	133	0	3	0	153
M	Other streams	4	4	16	4	40	0	0	1	45
N	Bachatna Creek	11	11	22	0	99	0	0	0	99
N	Big River	6	13	124	28	425	0	5	4	462
N	Big River Lakes	26	38	754	133	2,787	1	14	12	2,947
N	Chuitna River	7	7	22	8	99	0	2	0	109
N	Coal Creek (into Beluga Lake)	4	7	23	4	61	0	0	1	66
N	Crescent Lake	19	25	86	29	327	0	1	7	364
N	Crescent River (Grecian River)	10	11	27	5	122	0	2	0	129
N	Kamishak River	8	28	147	3	368	0	5	2	378
N	Kustatan River	26	33	162	30	662	0	3	1	696
N	Sites between North Forelands and Susitna drainage	5	5	5	0	20	0	0	0	20
N	Sites south of North Forelands	13	16	53	2	164	0	2	5	173

-continued-

Appendix H2.–Page 2 of 4.

Area	Site	Businesses <sup>a</sup>	Guides <sup>a</sup>	Trips	Angler-Days					Total
					Resident	Non-Res	Comped	Unknown	Crew	
N	Wolverine Creek mouth (by Big River Lakes)	17	37	516	91	1,977	2	4	19	2,093
P	Anchor River	5	10	75	18	139	0	4	0	161
P	Deep Creek	5	5	31	1	105	1	0	3	110
P	Kasilof River - above Highway	35	56	296	33	947	1	5	31	1,017
P	Kasilof River - below Highway	67	119	1,310	407	3,743	10	42	20	4,222
P	Kasilof River - guided, reach not specified	5	5	12	1	35	0	0	0	36
P	Kenai River - Cook Inlet to Soldotna Bridge	126	188	3,698	1,495	11,210	26	79	65	12,875
P	Kenai River - Soldotna Bridge to Moose R	44	68	756	121	2,377	2	7	19	2,526
P	Kenai River - Moose River to Skilak outlet	85	142	1,858	937	5,007	7	23	41	6,015
P	Kenai River - Skilak Inlet to Kenai Lake	42	90	2,679	1,018	7,022	9	119	159	8,327
P	Kenai River - guided, reach not specified	14	16	28	13	66	0	4	0	83
P	Ninilchik River	4	4	30	15	93	3	0	0	111
P	Quartz Creek	8	13	35	4	61	0	1	1	67
P	Russian River	9	22	191	29	386	0	10	18	443
P	Other lakes	12	13	42	1	102	1	1	16	121
P	Other streams	5	6	51	7	212	1	2	1	223
Q	Afognak Island streams	4	4	7	1	22	0	0	4	27
Q	American River	5	6	27	3	66	0	3	14	86
Q	Ayakulik River - above weir	4	7	118	13	472	0	0	0	485
Q	Browns Lagoon River	4	6	11	0	50	0	1	5	56
Q	Buskin River	4	4	11	2	20	0	0	6	28
Q	Dog Salmon Creek (Frazer River)	4	8	61	10	236	0	0	2	248
Q	Karluk lake and river above weir	5	13	40	2	170	0	0	21	193
Q	Saltery Creek	9	19	194	52	660	7	0	55	774
Q	Zachar Bay streams	4	6	22	2	55	0	0	3	60
Q	Other remote lakes	5	6	19	7	58	0	0	2	67
Q	Other roadside lakes and streams	6	6	52	9	171	0	0	15	195
Q	Other streams	20	32	303	35	990	0	1	50	1,076
R	American Creek	16	51	353	26	807	1	5	2	841
R	Becharof system	12	50	194	10	448	0	4	1	463
R	Big Creek (into Naknek)	5	21	73	8	148	0	1	1	158

-continued-

Appendix H2.–Page 3 of 4.

Area	Site	Businesses <sup>a</sup>	Guides <sup>a</sup>	Trips	Angler-Days					Total
					Resident	Non-Res	Comped	Unknown	Crew	
R	Brooks Lake	4	5	5	0	12	0	0	0	12
R	Brooks River (into Naknek Lake)	23	97	441	61	957	3	24	6	1,051
R	Contact Creek	10	48	146	9	348	0	6	0	363
R	Egegik River (Becharof system)	7	28	186	6	682	0	3	23	714
R	Naknek River (downstream from Rapids Camp incl trib)	12	41	324	29	671	0	14	3	717
R	Naknek River (Rapids Camp upstream to Naknek Lk, incl trib)	14	54	867	83	1,858	7	14	16	1,978
R	Naknek River and Tributaries	15	58	213	43	550	3	7	1	604
R	Swikshak River	4	11	35	19	124	0	0	0	143
R	Ugashik system	11	38	128	5	309	0	2	0	316
R	Other lakes	4	5	11	0	23	0	0	0	23
R	Other streams	18	74	1,288	250	2,912	0	24	8	3,194
S	Alagnak (Branch) River	21	90	1,291	46	2,646	0	33	28	2,753
S	Battle River	9	26	96	5	175	0	0	68	248
S	Chekok Creek	5	13	18	0	40	0	0	0	40
S	Copper River (Lake Iliamna area)	13	66	786	112	1,688	9	7	10	1,826
S	Funnel Creek	11	28	55	2	114	0	1	0	117
S	Gibraltar River	10	41	141	7	317	2	2	0	328
S	Iliamna River	5	22	222	5	510	0	0	2	517
S	Kijik Lake	4	4	6	0	19	0	0	0	19
S	Kijik River	4	11	25	0	77	0	0	0	77
S	Kukaklek River (Big Ku) (into Alagnak)	7	27	111	8	211	0	2	0	221
S	Kulik River	16	59	373	44	822	0	4	0	870
S	Kvichak River	23	91	666	82	1,485	0	16	44	1,627
S	Lake Clark	8	14	63	3	164	0	0	4	171
S	Lake Iliamna	11	30	106	1	285	0	2	0	288
S	Lower Talarik Creek	8	18	83	6	195	0	0	0	201
S	Moraine Creek	21	80	508	28	1,038	5	1	2	1,074
S	Nanuktuk Creek	14	38	118	2	243	0	0	0	245
S	Newhalen River	9	28	101	4	280	0	2	3	289
S	Nonvianuk Lake	4	6	18	2	33	0	0	3	38
S	Nonvianuk River (into Alagnak)	8	20	28	3	58	0	0	0	61

-continued-

Appendix H2.–Page 4 of 4.

Area	Site	Businesses <sup>a</sup>	Guides <sup>a</sup>	Trips	Angler-Days					Total
					Resident	Non-Res	Comped	Unknown	Crew	
S	Tazimina River	7	24	132	5	280	0	0	0	285
S	Other lakes and streams	5	9	13	0	29	0	0	0	29
T	Agulowak River	10	43	863	227	1,085	26	8	300	1,646
T	Agulukpak River	10	41	302	58	496	14	0	16	584
T	Aleknagik Lake	4	19	106	11	192	3	3	16	225
T	Mulchatna River	11	34	326	7	748	1	4	34	794
T	Nushagak River - Black Point upstream to sonar site	25	86	1,002	572	2,386	13	18	56	3,045
T	Nushagak River - sonar site to outlet of Mulchatna	33	130	1,309	596	3,531	49	8	68	4,252
T	Nushagak River - upstream from mouth of Mulchatna River	8	34	381	12	647	38	15	19	731
T	Nushagak River system (excluding Mulchatna drainage)	12	15	48	1	114	0	0	4	119
T	Nuyakuk River (Tikchik-Nuyakuk Lake system)	4	22	151	11	313	0	1	4	329
T	Togiak River system	7	57	965	45	1,970	2	2	45	2,064
T	Wood River	4	14	56	3	122	0	4	0	129
T	Wood River Lakes system	10	32	238	30	441	55	2	12	540
T	Other lakes and streams	6	29	271	12	518	5	5	2	542
	Other lakes and streams in Southcentral	4	7	50	6	110	0	2	1	119
Total Southcentral		367	1,020	32,391	8,127	84,398	318	627	1,540	95,010

*Note:* Responses with fewer than 4 businesses are not reported separately, to protect confidentiality of respondents. Data are current as of 11/09/2015.

<sup>a</sup> Regional and statewide business and guide totals are not additive because a business and/or guide can operate in multiple sites and areas.

Appendix H3.—Freshwater logbook participation by area and site, Arctic-Yukon-Kuskokwim Alaska, 2014.

Area	Site	Businesses <sup>a</sup>	Guides <sup>a</sup>	Trips	Angler-Days					
					Resident	Non-Res	Comped	Unknown	Crew	Total
I	Klutina River	8	13	201	202	447	6	7	11	673
I	Other lakes and streams	10	15	71	30	198	6	0	30	264
U	Chena Lakes Recreation Area	5	9	81	2	339	0	0	24	365
U	Other lakes	6	13	153	35	932	15	1	103	1,086
U	Other stocked lakes	5	6	13	1	132	1	0	12	146
U	Other streams	9	26	685	49	1,460	2	9	20	1,540
V	Aniak River	4	19	255	5	468	23	7	11	514
V	Goodnews River	11	50	829	33	1,659	4	13	29	1,738
V	Holitna River	5	17	192	23	455	0	14	6	498
V	Kanektok River (Quinhagak, Chosen)	8	63	1,286	17	2,516	1	23	10	2,567
V	Kuskokwim River drainages below and including Aniak River	4	11	113	90	253	1	6	35	385
V	Other lakes and streams	7	10	38	0	118	1	0	15	134
Y	Yukon River drainages downstream of Koyukuk River	4	23	612	35	1,172	0	11	2	1,220
	Other lakes and streams in Arctic-Yukon-Kuskokwim	5	12	363	62	675	0	0	16	753
	Total Arctic-Yukon-Kuskokwim	56	229	4,892	584	10,824	60	91	324	11,883

*Note:* Responses with fewer than 4 businesses are not reported separately, to protect confidentiality of respondents. Data are current as of 11/09/2015.

<sup>a</sup> Regional and statewide business and guide totals are not additive because a business and/or guide can operate in multiple sites and areas.

Appendix H4.–Freshwater logbook participation by region, Statewide, 2014.

Region	Businesses <sup>a</sup>	Guides <sup>a</sup>	Trips	Angler-Days					Total
				Resident	Non-Res	Comped	Unknown	Crew	
Southeast	59	156	2,869	320	9,517	2	52	366	10,257
Southcentral	367	1,020	32,391	8,127	84,398	318	627	1,540	95,010
Arctic-Yukon-Kuskokwim	56	229	4,892	584	10,824	60	91	324	11,883
Total	465	1,322	40,152	9,031	104,739	380	770	2,230	117,150

*Note:* Data are current as of 11/09/2015.

<sup>a</sup> Regional and statewide business and guide totals are not additive because a business and/or guide can operate in multiple sites and areas.



Appendix H5.—Freshwater logbook angler-days and species kept by area and site, Southeast Alaska, 2014.

Area	Site	Angler- days	Salmon			Trout			Dolly		Northern		
			Chinook <sup>a</sup>	Coho	Sockeye	Cutthroat	Rainbow	Steelhead	Lake	Varden	Grayling	Pike	Sheefish
A	Lakes and streams	168	0	55	0	0	1	0	0	2	0	0	0
B	Thorne River and Lake	116	0	28	1	0	0	0	0	0	0	0	0
B	Other lakes and streams	253	0	96	0	0	0	0	0	2	0	0	0
C	Lakes and streams	274	13	5	5	2	0	0	0	0	0	0	0
D	Baranof Island streams and lakes	618	0	11	0	0	1	0	0	13	0	0	0
D	Chichagof Island streams and lakes	31	0	0	0	0	0	0	0	0	0	0	0
D	Eva Lake and Stream (Baranof Island)	168	0	0	0	0	0	0	0	0	0	0	0
D	Katlian River (Baranof Island)	118	0	14	0	0	0	0	0	11	0	0	0
D	Nakwasina Sound streams (Baranof Island)	198	0	13	0	0	0	0	0	2	0	0	0
D	Plotnikof system stream and lake (Baranof Island)	33	0	42	0	0	0	0	0	1	0	0	0
D	Politofski Creek (Baranof Island)	40	0	0	0	0	0	0	0	0	0	0	0
D	Rezanof system stream and lakes (Baranof Island)	26	0	0	0	0	0	0	0	0	0	0	0
D	Sitkoh Creek and Lake (Chichagof Island)	50	0	0	1	5	2	0	0	0	0	0	0
D	Other lakes and streams	189	0	22	0	3	1	0	0	7	0	0	0
E	Admiralty Island streams (Admiralty Island)	751	0	67	0	3	0	0	0	24	0	0	0
E	Other lakes and streams	1,012	0	45	0	4	0	0	0	0	0	0	0
F&G	Lakes and streams	708	0	12	9	0	0	0	0	72	0	0	0
H	Situk River (above weir)	1,431	0	1,114	1,531	0	0	0	0	46	0	0	0
H	Situk River (below weir)	89	0	70	105	0	0	0	0	4	0	0	0
H	Tsiu River	2,201	0	5,595	8	0	0	0	0	0	0	0	0
Total Southeast		10,257	43	10,200	1,700	34	7	0	0	203	0	0	0

Note: Responses with fewer than 4 businesses are not reported separately, to protect confidentiality of respondents. Data are current as of 11/09/2015.

<sup>a</sup> All Chinook salmon harvest is included, regardless of fish size.

Appendix H6.—Freshwater logbook angler-days and species kept by area and site, Southcentral Alaska, 2014.

Area	Site	Angler-days	Salmon			Trout				Dolly		Northern	
			Chinook <sup>a</sup>	Coho	Sockeye	Cutthroat	Rainbow	Steelhead	Lake	Varden	Grayling	Pike	Sheefish
J	East Prince William Sound lakes and streams	544	0	857	0	0	0	0	0	12	0	0	0
J	Other lakes and streams	195	9	145	136	0	0	0	0	5	0	0	0
K	Little Susitna River	556	67	586	1	0	1	0	0	0	0	0	0
K	Little Susitna River above weir	469	74	522	1	0	0	0	0	0	0	0	0
K	Other lakes and streams	62	2	0	0	0	61	0	0	41	0	0	0
M	Chunilna Creek (Clear Creek)	846	0	204	0	0	0	0	0	1	0	0	0
M	Deshka River (Kroto Creek) above weir	178	55	138	0	0	28	0	0	0	0	5	0
M	Deshka River (Kroto Creek) below weir	1,030	335	62	0	0	5	0	0	0	0	0	0
M	Eightmile Creek	43	0	80	0	0	0	0	0	0	0	0	0
M	Fish Lake Creek and Fish Lakes (Yentna drainage)	45	9	0	0	0	0	0	0	0	0	144	0
M	Indian Creek (into Yentna near Fish Lakes)	286	0	521	0	0	0	0	0	0	0	2	0
M	Lake Creek	2,735	221	1,061	138	0	24	0	0	1	11	19	0
M	Little Willow Creek	64	0	58	0	0	1	0	0	0	0	0	0
M	Talachulitna Creek	90	0	9	26	0	0	0	0	0	0	0	0
M	Talachulitna River	800	4	299	120	0	1	0	0	7	0	0	0
M	Talkeetna River	1,549	0	818	945	0	2	0	0	4	0	0	0
M	Yentna River drainage (remainder)	1,017	41	1,035	217	0	1	0	0	3	7	14	0
M	Other Chulitna /East Susitna drainage lakes and streams	115	0	110	17	0	0	0	0	0	0	9	0
M	Other West Susitna drainage lakes and streams	153	0	205	18	0	2	0	0	0	0	7	0
M	Other streams	45	0	32	0	0	0	0	2	0	1	0	0
N	Bachatna Creek	99	0	265	0	0	0	0	0	0	0	0	0
N	Big River	462	0	514	741	0	0	0	0	0	0	0	0
N	Big River Lakes	2,947	0	2,272	5,768	0	0	0	0	5	0	0	0
N	Chuitna River	109	0	166	4	0	0	0	0	4	0	0	0
N	Coal Creek (into Beluga Lake)	66	0	16	33	0	0	0	0	1	0	0	0
N	Crescent Lake	364	0	143	375	0	10	0	4	50	2	0	0
N	Crescent River (Grecian River)	129	0	31	133	0	0	0	0	15	0	0	0
N	Kamishak River	378	0	366	3	0	0	0	0	25	0	0	0
N	Kustatan River	696	0	1,606	67	0	0	0	0	5	0	0	0
N	Sites between North Forelands and Susitna drainage	20	0	25	25	0	0	0	0	0	0	0	0
N	Sites south of North Forelands	173	0	282	45	0	0	0	0	0	0	0	0

-continued-

Appendix H6.–Page 2 of 4.

		Angler- days	Salmon			Trout			Dolly		Northern		
Area	Site		Chinook <sup>a</sup>	Coho	Sockeye	Cutthroat	Rainbow	Steelhead	Lake	Varden	Grayling	Pike	Sheefish
N	Wolverine Creek mouth (by Big River Lakes)	2,093	0	498	5,114	0	0	0	0	1	0	0	0
P	Anchor River	161	8	2	0	0	0	0	0	21	0	0	0
P	Deep Creek	110	9	67	0	0	0	0	0	6	0	0	0
P	Kasilof River - above Highway	1,017	2	66	2,016	0	0	0	0	7	0	0	0
P	Kasilof River - below Highway	4,222	270	652	1,685	5	0	0	0	4	0	0	0
P	Kasilof River - guided, reach not specified	36	0	4	49	0	0	0	0	0	0	0	0
P	Kenai River - Cook Inlet to Soldotna Bridge	12,875	295	7,942	7,037	0	31	0	0	92	0	0	0
P	Kenai River - Soldotna Bridge to Moose R	2,526	0	682	4,204	0	3	0	0	1	0	0	0
P	Kenai River - Moose River to Skilak outlet	6,015	4	2,198	5,774	0	37	0	0	45	0	0	0
P	Kenai River - Skilak Inlet to Kenai Lake	8,327	0	208	4,479	0	52	0	0	101	1	0	0
P	Kenai River - guided, reach not specified	83	0	11	30	0	0	0	0	0	0	0	0
P	Ninilchik River	111	106	57	0	0	0	0	0	3	0	0	0
P	Quartz Creek	67	0	0	0	0	0	0	0	0	0	0	0
P	Russian River	443	0	11	283	0	0	0	0	1	0	0	0
P	Other lakes	121	0	13	30	0	49	0	0	0	0	0	0
P	Other streams	223	0	56	0	0	0	0	0	38	0	0	0
Q	Afognak Island streams	27	0	24	14	0	0	0	0	0	0	0	0
Q	American River	86	31	24	0	0	0	0	0	22	0	0	0
Q	Ayakulik River - above weir	485	0	127	248	0	0	0	0	51	0	0	0
Q	Browns Lagoon River	56	0	3	0	0	0	0	0	1	0	0	0
Q	Buskin River	28	0	6	6	0	0	0	0	0	0	0	0
Q	Dog Salmon Creek (Frazer River)	248	0	263	576	0	0	0	0	1	0	0	0
Q	Karluk lake and river above weir	193	0	98	54	0	0	3	0	17	0	0	0
Q	Saltery Creek	774	1	325	1,198	0	0	0	0	34	0	0	0
Q	Zachar Bay streams	60	0	71	4	0	0	0	0	4	0	0	0
Q	Other remote lakes	67	0	136	25	0	0	0	0	1	0	0	0
Q	Other roadside lakes and streams	195	7	83	41	0	0	0	0	16	0	0	0
Q	Other streams	1,076	0	1,065	741	0	0	1	0	158	0	0	0
R	American Creek	841	0	0	0	0	4	0	0	10	0	0	0
R	Becharof system	463	0	2	30	0	1	0	0	17	6	0	0
R	Big Creek (into Naknek)	158	0	351	0	0	0	0	0	0	0	0	0
R	Brooks Lake	12	0	0	0	0	0	0	0	0	0	0	0

-continued-

Appendix H6.–Page 3 of 4.

Area	Site	Angler- days	Salmon			Trout			Dolly		Northern		
			Chinook <sup>a</sup>	Coho	Sockeye	Cutthroat	Rainbow	Steelhead	Lake	Varden	Grayling	Pike	Sheefish
R	Brooks River (into Naknek Lake)	1,051	0	0	9	0	0	0	1	0	0	0	0
R	Contact Creek	363	1	0	1	0	0	0	0	6	0	0	0
R	Egegik River (Becharof system)	714	4	1,985	53	0	0	0	0	8	0	0	0
R	Naknek River (dwnstream frm Rapids Camp incl trib)	717	229	593	102	0	15	0	0	0	0	0	0
R	Naknek River (Rapids Camp upstream to Naknek Lk, incl trib)	1,978	132	970	2,068	0	16	0	0	5	2	1	0
R	Naknek River and Tributaries	604	0	0	0	0	0	0	0	7	0	0	0
R	Swikshak River	143	0	407	0	0	0	0	0	0	0	0	0
R	Ugashik system	316	2	113	7	0	0	0	0	8	0	0	0
R	Other lakes	23	0	15	0	0	0	0	3	0	0	2	0
R	Other streams	3,194	379	1,737	701	0	0	0	0	48	2	0	0
S	Alagnak (Branch) River	2,753	349	1,326	1,430	0	0	0	29	36	6	0	0
S	Battle River	248	0	0	0	0	0	0	0	0	0	0	0
S	Chekok Creek	40	0	1	0	0	0	0	0	0	0	0	0
S	Copper River (Lake Iliamna area)	1,826	0	10	333	0	0	0	0	0	0	0	0
S	Funnel Creek	117	0	0	0	0	0	0	0	0	0	0	0
S	Gibraltar River	328	0	0	87	0	0	0	0	0	0	0	0
S	Iliamna River	517	0	0	259	0	0	0	0	2	0	0	0
S	Kijik Lake	19	0	0	0	0	0	0	2	2	0	0	0
S	Kijik River	77	0	0	0	0	0	0	1	2	49	0	0
S	Kukaklek River (Big Ku) (into Alagnak)	221	0	0	46	0	0	0	1	0	0	0	0
S	Kulik River	870	0	1	0	0	0	0	1	0	7	0	0
S	Kvichak River	1,627	0	170	1,398	0	7	0	10	10	9	0	0
S	Lake Clark	171	0	0	0	0	0	0	3	1	2	1	0
S	Lake Iliamna	288	0	79	420	0	0	0	0	0	0	0	0
S	Lower Talarik Creek	201	0	0	8	0	0	0	0	0	0	0	0
S	Moraine Creek	1,074	0	12	1	0	0	0	1	0	13	0	0
S	Nanuktuk Creek	245	0	0	2	0	0	0	0	1	7	0	0
S	Newhalen River	289	0	34	516	0	0	0	4	0	9	0	0
S	Nonvianuk Lake	38	0	0	2	0	2	0	0	0	0	0	0

-continued-

Appendix H6.–Page 4 of 4.

Area	Site	Angler- days	Salmon			Trout				Dolly		Northern	
			Chinook <sup>a</sup>	Coho	Sockeye	Cutthroat	Rainbow	Steelhead	Lake	Varden	Grayling	Pike	Sheefish
R	Brooks River (into Naknek Lake)	1,051	0	0	9	0	0	0	1	0	0	0	0
R	Contact Creek	363	1	0	1	0	0	0	0	6	0	0	0
R	Egegik River (Becharof system)	714	4	1,985	53	0	0	0	0	8	0	0	0
R	Naknek River (dwnstream frm Rapids Camp incl trib)	717	229	593	102	0	15	0	0	0	0	0	0
R	Naknek River (Rapids Camp upstream to Naknek Lk,incl trib)	1,978	132	970	2,068	0	16	0	0	5	2	1	0
R	Naknek River and Tributaries	604	0	0	0	0	0	0	0	7	0	0	0
R	Swikshak River	143	0	407	0	0	0	0	0	0	0	0	0
R	Ugashik system	316	2	113	7	0	0	0	0	8	0	0	0
R	Other lakes	23	0	15	0	0	0	0	3	0	0	2	0
R	Other streams	3,194	379	1,737	701	0	0	0	0	48	2	0	0
S	Alagnak (Branch) River	2,753	349	1,326	1,430	0	0	0	29	36	6	0	0
S	Battle River	248	0	0	0	0	0	0	0	0	0	0	0
S	Chekok Creek	40	0	1	0	0	0	0	0	0	0	0	0
S	Copper River (Lake Iliamna area)	1,826	0	10	333	0	0	0	0	0	0	0	0
S	Funnel Creek	117	0	0	0	0	0	0	0	0	0	0	0
S	Gibraltar River	328	0	0	87	0	0	0	0	0	0	0	0
S	Iliamna River	517	0	0	259	0	0	0	0	2	0	0	0
Total Southcentral		95,010	7,612	39,996	51,390	5	370	4	70	1,467	166	217	0

*Note:* Responses with fewer than 4 businesses are not reported separately, to protect confidentiality of respondents. Data are current as of 11/09/2015.

<sup>a</sup> All Chinook salmon harvest is included, regardless of fish size.

Appendix H7.—Freshwater logbook angler-days and species kept by area and site, Arctic-Yukon-Kuskokwim Alaska, 2014.

Area	Site	Angler- days	Salmon			Trout				Dolly		Northern	
			Chinook <sup>a</sup>	Coho	Sockeye	Cutthroat	Rainbow	Steelhead	Lake	Varden	Grayling	Pike	Sheefish
I	Klutina River	673	163	0	405	0	0	0	0	61	1	0	0
I	Other lakes and streams	264	36	0	130	0	7	0	0	0	8	0	0
U	Chena Lakes Recreation Area	365	0	0	0	0	141	0	0	15	1	0	0
U	Other lakes	1,086	0	0	0	0	1,125	0	0	132	68	7	0
U	Other stocked lakes	146	0	0	0	0	493	0	1	10	0	1	0
U	Other streams	1,540	0	2	0	0	0	0	0	0	25	0	0
V	Aniak River	514	0	139	0	0	0	0	0	54	20	7	12
V	Goodnews River	1,738	5	979	156	0	1	0	5	167	1	0	0
V	Holitna River	498	0	137	4	0	0	0	0	14	21	53	24
V	Kanektok River (Quinhagak, Chosen)	2,567	1	982	152	0	6	0	0	53	1	0	0
	Kuskokwim River drainages below and including												
V	Aniak River	385	0	39	1	0	0	0	0	26	9	0	0
V	Other lakes and streams	134	0	2	0	0	0	0	4	3	0	2	0
	Yukon River drainages downstream of Koyukuk												
Y	River	1,220	0	351	1	0	0	0	0	16	137	6	0
	Other lakes and streams in Arctic-Yukon-Kuskokwim	753	0	982	0	0	0	0	0	23	16	0	1
Total Arctic-Yukon-Kuskokwim		11,883	205	3,613	849	0	1,773	0	10	574	308	76	37

*Note:* Responses with fewer than 4 businesses are not reported separately, to protect confidentiality of respondents. Data are current as of 11/09/2015.

<sup>a</sup> All Chinook salmon harvest is included, regardless of fish size.

Appendix H8.—Freshwater logbook angler-days and species kept by region, Statewide, 2014.

Region	Angler- days	Salmon			Trout				Dolly Varden	Northern		
		Chinook <sup>a</sup>	Coho	Sockeye	Cutthroat	Rainbow	Steelhead	Lake		Grayling	Pike	Sheefish
Southeast	10,257	43	10,200	1,700	34	7	0	0	203	0	0	0
Southcentral	95,010	7,612	39,996	51,390	5	370	4	70	1,467	166	217	0
Arctic-Yukon-Kuskokwim	11,883	205	3,613	849	0	1,773	0	10	574	308	76	37
Total	117,150	7,860	53,809	53,939	39	2,150	4	80	2,244	474	293	37

*Note:* Data are current as of 11/09/2015.

<sup>a</sup> All Chinook salmon harvest is included, regardless of fish size.

Appendix H9.—Freshwater logbook angler-days and species released by area and site, Southeast Alaska, 2014.

Area	Site	Angler- days	Salmon			Trout			Dolly		Northern		
			Chinook <sup>a</sup>	Coho	Sockeye	Cutthroat	Rainbow	Steelhead	Lake	Varden	Grayling	Pike	Sheefish
A	Lakes and streams	168	0	75	0	103	53	5	0	332	0	0	0
B	Thorne River and Lake	116	0	0	0	66	7	41	0	108	0	0	0
B	Other lakes and streams	253	1	25	7	30	23	60	0	445	0	0	0
C	Lakes and streams	274	49	4	8	60	45	219	0	58	0	0	0
D	Baranof Island streams and lakes	618	4	28	1	1,146	347	47	0	1,112	0	0	0
D	Chichagof Island streams and lakes	31	0	0	0	40	121	0	0	199	0	0	0
D	Eva Lake and Stream (Baranof Island)	168	0	1	0	605	57	6	0	92	0	0	0
D	Katlian River (Baranof Island)	118	0	12	0	0	30	0	0	288	0	0	0
D	Nakwasina Sound streams (Baranof Island)	198	0	5	0	3	26	2	0	191	0	0	0
D	Plotnikof system stream and lake (Baranof Island)	33	0	24	0	0	7	5	0	6	0	0	0
D	Politofski Creek (Baranof Island)	40	0	0	0	0	49	11	0	36	0	0	0
D	Rezanof system stream and lakes (Baranof Island)	26	0	0	0	0	0	38	0	25	0	0	0
D	Sitkoh Creek and Lake (Chichagof Island)	50	0	11	1	350	207	4	0	23	0	0	0
D	Other lakes and streams	189	0	32	2	202	147	2	0	389	0	0	0
E	Admiralty Island streams (Admiralty Island)	751	0	135	6	102	11	9	0	3,087	0	0	0
E	Other lakes and streams	1,012	0	23	0	54	0	7	0	6,540	0	0	0
F&G	Lakes and streams	708	0	52	365	9	2	0	0	1,402	0	0	0
H	Situk River (above weir)	1,431	28	2,711	1,283	0	17	1,437	0	134	0	0	0
H	Situk River (below weir)	89	0	52	14	0	0	3	0	6	0	0	0
H	Tsiu River	2,201	0	32,191	47	0	1	4	0	2	0	0	0
H	Other streams	1,783	21	9,949	34	240	15	186	0	560	0	0	0
Total Southeast		10,257	103	45,330	1,768	3,010	1,165	2,086	0	15,035	0	0	0

Note: Responses with fewer than 4 businesses are not reported separately, to protect confidentiality of respondents. Data are current as of 11/09/2015.

<sup>a</sup> All Chinook salmon released are included, regardless of fish size.



Appendix H10.–Freshwater logbook angler-days and species released by area and site, Southcentral Alaska, 2014.

Area	Site	Angler-days	Salmon			Trout				Dolly Varden	Grayling	Northern	
			Chinook <sup>a</sup>	Coho	Sockeye	Cutthroat	Rainbow	Steelhead	Lake			Pike	Sheefish
J	East Prince William Sound lakes and streams	544	5	1,471	9	5	9	2	0	298	0	15	0
J	Other lakes and streams	195	0	18	0	34	0	0	0	119	0	0	0
K	Little Susitna River	556	18	44	0	0	9	0	0	0	0	0	0
K	Little Susitna River above weir	469	7	19	0	0	1	0	0	0	0	0	0
K	Other lakes and streams	62	0	0	0	0	428	0	0	81	2	0	0
M	Chunilna Creek (Clear Creek)	846	74	157	1	0	49	0	0	12	4	0	0
M	Deshka River (Kroto Creek) above weir	178	217	69	0	0	76	0	0	0	37	0	0
M	Deshka River (Kroto Creek) below weir	1,030	131	3	1	0	35	0	0	0	1	0	0
M	Eightmile Creek	43	1	42	0	0	26	0	0	0	0	0	0
M	Fish Lake Creek and Fish Lakes (Yentna drainage)	45	16	0	0	0	0	0	0	0	0	0	0
M	Indian Creek (into Yentna near Fish Lakes)	286	4	19	0	0	2	0	0	0	0	0	0
M	Lake Creek	2,735	917	154	100	0	4,625	0	0	7	594	1	0
M	Little Willow Creek	64	16	6	0	0	21	0	0	0	5	0	0
M	Talachulitna Creek	90	11	11	37	0	531	0	0	92	87	0	0
M	Talachulitna River	800	471	389	124	0	3,000	0	0	245	302	0	0
M	Talkeetna River	1,549	257	192	782	0	118	0	5	419	31	0	0
M	Yentna River drainage (remainder)	1,017	189	674	126	0	2,632	0	0	2,355	392	0	0
M	Other Chulitna/East Susitna lakes and streams	115	3	41	101	0	64	0	0	0	22	0	0
M	Other West Susitna drainage lakes and streams	153	2	33	1	0	20	0	0	1	21	79	0
M	Other streams	45	11	5	0	0	380	0	22	3	175	0	0
N	Bachatna Creek	99	0	91	0	0	0	0	0	44	0	0	0
N	Big River	462	0	40	82	0	0	0	0	6	0	0	0
N	Big River Lakes	2,947	0	224	6,075	0	0	0	0	10	0	0	0
N	Chuitna River	109	2	52	7	0	43	0	0	34	0	0	0
N	Coal Creek (into Beluga Lake)	66	0	0	60	0	60	0	0	1,048	1	0	0
N	Crescent Lake	364	1	39	402	0	34	0	27	453	5	0	0
N	Crescent River (Grecian River)	129	1	0	288	0	0	0	12	301	0	0	0
N	Kamishak River	378	0	203	10	0	73	0	0	3,662	48	0	0
N	Kustatan River	696	0	119	74	0	0	0	0	147	3	0	0
N	Sites between N. Forelands and Susitna drainage	20	0	14	7	0	0	0	0	2	0	0	0
N	Sites south of North Forelands	173	0	298	14	0	11	0	0	215	1	0	0

-continued-

Appendix H10.–Page 2 of 4.

Area	Site	Angler- days	Salmon			Trout			Dolly		Northern		
			Chinook <sup>a</sup>	Coho	Sockeye	Cutthroat	Rainbow	Steelhead	Lake	Varden	Grayling	Pike	Sheefish
N	Wolverine Creek mouth (by Big River Lakes)	2,093	0	84	3,405	0	0	0	0	10	0	0	0
P	Anchor River	161	1	40	0	0	2	28	0	582	0	0	0
P	Deep Creek	110	5	8	0	0	2	19	0	11	0	0	0
P	Kasilof River - above Highway	1,017	4	1	106	0	3	30	0	55	0	0	0
P	Kasilof River - below Highway	4,222	331	1	77	2	36	32	0	157	0	0	0
P	Kasilof River - guided, reach not specified	36	0	0	1	0	0	0	0	0	0	0	0
P	Kenai River - Cook Inlet to Soldotna Bridge	12,875	442	241	364	0	1,565	0	0	1,447	1	0	0
P	Kenai River - Soldotna Bridge to Moose R	2,526	8	66	661	0	2,985	0	0	1,497	38	0	0
P	Kenai River - Moose River to Skilak outlet	6,015	11	478	1,473	0	14,017	0	19	10,765	40	0	0
P	Kenai River - Skilak Inlet to Kenai Lake	8,327	4	37	1,574	0	21,301	0	2	22,802	96	0	0
P	Kenai River - guided, reach not specified	83	1	2	10	0	181	0	0	201	0	0	0
P	Ninilchik River	111	287	19	0	0	0	5	0	6	0	0	0
P	Quartz Creek	67	0	0	41	0	54	0	0	824	0	0	0
P	Russian River	443	0	49	331	0	1,583	0	0	225	0	0	0
P	Other lakes	121	0	0	0	0	287	0	0	11	460	0	0
P	Other streams	223	0	13	2	0	14	0	0	87	0	0	0
Q	Afognak Island streams	27	0	3	0	0	0	0	0	0	0	0	0
Q	American River	86	1	0	0	0	0	0	0	109	0	0	0
Q	Ayakulik River - above weir	485	50	2,511	413	0	0	36	0	1,760	0	0	0
Q	Browns Lagoon River	56	0	2	0	0	0	0	0	227	0	0	0
Q	Buskin River	28	0	2	2	0	2	0	0	5	0	0	0
Q	Dog Salmon Creek (Frazer River)	248	0	56	439	0	1	0	0	36	0	0	0
Q	Karluk lake and river above weir	193	11	81	50	0	0	485	0	1,272	0	0	0
Q	Saltery Creek	774	0	562	827	0	2	2	0	162	0	0	0
Q	Zachar Bay streams	60	0	23	16	0	0	0	0	148	0	0	0
Q	Other remote lakes	67	0	14	5	0	6	5	0	84	0	0	0
Q	Other roadside lakes and streams	195	0	230	19	0	0	0	0	15	0	0	0
Q	Other streams	1,076	9	1,467	505	0	109	53	0	3,803	0	0	0
R	American Creek	841	0	0	39	0	2,391	0	13	12,850	99	20	0
R	Becharof system	463	29	99	240	0	544	0	0	7,279	1,786	0	0
R	Big Creek (into Naknek)	158	7	70	0	0	192	0	0	319	141	1	0
R	Brooks Lake	12	0	0	2	0	112	0	4	4	1	0	0

-continued-

Appendix H10.–Page 3 of 4.

Area	Site	Angler- days	Salmon			Trout				Dolly		Northern	
			Chinook <sup>a</sup>	Coho	Sockeye	Cutthroat	Rainbow	Steelhead	Lake	Varden	Grayling	Pike	Sheefish
R	Brooks River (into Naknek Lake)	1,051	0	8	1,416	0	6,099	0	4	536	122	1	0
R	Contact Creek	363	6	7	10	0	349	0	0	7,815	1,197	0	0
R	Egegik River (Becharof system)	714	18	1,277	27	0	0	0	0	53	1	0	0
R	Naknek River (dwnstream frm Rapids Camp incl trib)	717	129	104	24	0	495	0	0	35	6	0	0
R	Naknek River (Rapids Camp upstream to Naknek Lk, incl trib)	1,978	380	293	652	0	6,841	0	1	1,378	637	16	0
R	Naknek River and Tributaries	604	0	4	628	0	2,794	0	1,351	4,871	497	30	0
R	Swikshak River	143	0	574	0	0	6	0	13	4	0	0	0
R	Ugashik system	316	107	39	59	0	0	0	47	3,675	391	0	0
R	Other lakes	23	4	18	3	0	15	0	0	0	0	0	0
R	Other streams	3,194	2,404	5,641	1,342	0	2,231	218	52	7,831	592	11	0
S	Alagnak (Branch) River	2,753	1,370	3,330	824	0	5,187	0	154	1,092	1,300	5	0
S	Battle River	248	0	0	283	0	1,101	0	8	17	242	0	0
S	Chekok Creek	40	0	0	36	0	220	0	0	22	0	0	0
S	Copper River (Lake Iliamna area)	1,826	8	4	2,000	0	18,728	0	0	2,477	77	3	0
S	Funnel Creek	117	0	1	29	0	1,141	0	6	268	8	0	0
S	Gibraltar River	328	0	0	205	0	3,136	0	11	30	53	0	0
S	Iliamna River	517	0	0	445	0	509	0	0	4,114	18	0	0
S	Kijik Lake	19	0	0	1	0	0	0	6	5	55	0	0
S	Kijik River	77	0	0	0	0	0	0	0	3	549	25	0
S	Kukaklek River (Big Ku) (into Alagnak)	221	4	0	16	0	1,682	0	549	29	413	14	0
S	Kulik River	870	0	1	268	0	9,693	0	251	66	90	0	0
S	Kvichak River	1,627	34	500	1,431	0	11,932	0	17	240	2,374	4	0
S	Lake Clark	171	0	0	0	0	0	0	111	108	694	178	0
S	Lake Iliamna	288	0	25	327	0	475	0	0	453	70	910	0
S	Lower Talarik Creek	201	0	34	31	0	1,754	0	0	129	598	0	0
S	Moraine Creek	1,074	2	32	237	0	10,476	0	206	304	1,427	22	0
S	Nanuktuk Creek	245	0	0	81	0	2,133	0	9	1,015	128	0	0
S	Newhalen River	289	0	25	316	0	416	0	2	83	864	5	0
S	Nonvianuk Lake	38	19	1	1	0	271	0	28	0	1	0	0
S	Nonvianuk River (into Alagnak)	61	2	8	0	0	613	0	23	140	25	0	0

-continued-

Appendix H10.–Page 4 of 4.

Area	Site	Angler- days	Salmon			Trout				Dolly		Northern	
			Chinook <sup>a</sup>	Coho	Sockeye	Cutthroat	Rainbow	Steelhead	Lake	Varden	Grayling	Pike	Sheefish
S	Tazimina River	285	0	0	50	0	1,931	0	8	98	1,376	1	0
S	Other lakes and streams	29	0	0	22	0	176	0	0	0	16	0	0
T	Agulowak River	1,646	8	66	707	0	12,882	0	0	10,589	5,266	104	0
T	Agulukpak River	584	0	0	159	0	5,404	0	0	954	1,888	22	0
T	Aleknagik Lake	225	0	57	156	0	0	0	0	648	100	179	0
T	Mulchatna River	794	1,476	937	202	0	679	0	357	1,797	1,380	2	0
T	Nushagak River - Black Point upstream to sonar site	3,045	4,790	21	8	0	12	0	0	165	96	0	0
T	Nushagak River - sonar site to outlet of Mulchatna	4,252	6,024	829	6	0	51	0	0	54	41	1	0
T	Nushagak River - upstream from mouth of Mulchatna River	731	31	621	56	0	974	0	0	5,804	2,669	2	0
T	Nushagak River system (excluding Mulchatna drainage)	119	72	1	2	0	159	0	5	1,095	487	0	0
T	Nuyakuk River (Tikchik-Nuyakuk Lake system)	329	87	726	13	0	526	0	592	1,087	2,204	9	0
T	Togiak River system	2,064	1,451	4,145	67	0	757	0	22	3,563	75	24	0
T	Wood River	129	4	100	118	0	162	0	0	484	23	0	0
T	Wood River Lakes system	540	257	276	409	0	412	0	0	1,541	1,133	418	0
T	Other lakes and streams	542	42	1,880	130	0	288	0	17	1,035	494	5	0
	Other lakes and streams in Southcentral	119	0	206	15	0	90	0	0	56	0	0	0
Total Southcentral		95,010	22,284	32,377	31,715	41	170,436	915	3,954	142,070	34,070	2,107	0

*Note:* Responses with fewer than 4 businesses are not reported separately, to protect confidentiality of respondents. Data are current as of 11/09/2015.

<sup>a</sup> All Chinook salmon released are included, regardless of fish size.

Appendix H11.—Freshwater logbook angler-days and species released by area and site, Arctic-Yukon-Kuskokwim Alaska, 2014.

Area	Site	Angler- days	Salmon			Trout				Dolly Varden	Northern		
			Chinook <sup>a</sup>	Coho	Sockeye	Cutthroat	Rainbow	Steelhead	Lake		Grayling	Pike	Sheefish
I	Klutina River	673	309	0	60	0	4	0	0	67	7	0	0
I	Other lakes and streams	264	32	0	98	0	239	0	0	1	437	0	0
U	Chena Lakes Recreation Area	365	0	0	0	0	99	0	0	4	0	0	0
U	Other lakes	1,086	0	0	0	0	492	0	0	20	188	0	0
U	Other stocked lakes	146	0	0	0	0	53	0	0	1	0	0	0
U	Other streams	1,540	0	28	0	0	0	0	0	182	8,625	53	0
V	Aniak River	514	0	2,034	122	0	1,232	0	0	4,366	1,621	609	21
V	Goodnews River	1,738	77	6,156	195	0	1,178	0	285	13,313	735	0	0
V	Holitna River	498	0	156	50	0	11	0	0	413	294	1,101	143
V	Kanektok River (Quinhagak, Chosen) Kuskokwim River drainages including Aniak River	2,567	137	4,030	498	0	11,669	0	1	19,252	1,140	0	0
V	Other lakes and streams	385	6	527	16	0	2,078	0	0	2,253	1,504	35	0
V	Yukon River drainages downstream of Koyukuk River	134	1	9	1	0	566	0	52	532	171	37	0
Y	Other lakes and streams in Arctic-Yukon- Kuskokwim	1,220	4	2,064	17	0	0	0	0	2,282	14,622	7,066	14
		753	9	3,934	0	0	0	0	0	510	1,373	17	115
Total Arctic-Yukon-Kuskokwim		11,883	575	18,938	1,057	0	17,621	0	338	43,196	30,717	8,918	293

*Note:* Responses with fewer than 4 businesses are not reported separately, to protect confidentiality of respondents. Data are current as of 11/09/2015.

<sup>a</sup> All Chinook salmon released are included, regardless of fish size.

Appendix H12.–Freshwater logbook angler-days and species released by region, Statewide, 2014.

Region	Angler- days	Salmon			Trout				Dolly		Northern	
		Chinook <sup>a</sup>	Coho	Sockeye	Cutthroat	Rainbow	Steelhead	Lake	Varden	Grayling	Pike	Sheefish
Southeast	10,257	103	45,330	1,768	3,010	1,165	2,086	0	15,035	0	0	0
Southcentral	95,010	22,284	32,377	31,715	41	170,436	915	3,954	142,070	34,070	2,107	0
Arctic-Yukon-Kuskokwim	11,883	575	18,938	1,057	0	17,621	0	338	43,196	30,717	8,918	293
Total	117,150	22,962	96,645	34,540	3,051	189,222	3,001	4,292	200,301	64,787	11,025	293

*Note:* Data are current as of 11/09/2015.

<sup>a</sup> All Chinook salmon released are included, regardless of fish size.

**APPENDIX I.**  
**SALTWATER LOGBOOK SUMMARIES BY AREA AND**  
**PORT OF OFFLOADING**

Appendix I1.—Saltwater logbook participation and effort by area and port of offloading, Southeast Alaska, 2014.

Area	Port of Offloading	Businesses <sup>a</sup>	Vessels <sup>a</sup>	Trips	Angler-days				Crew	Anglers
					Resident	Non-Res	Comp	Unknown		
A	Ketchikan	64	96	5,399	273	22,670	52	224	7	23,226
A	Knudson Cove	18	24	1,568	62	6,528	13	77	1	6,681
A	Salmon Falls	4	10	249	7	782	3	3	0	795
A	Other	4	16	854	14	1,899	3	5	0	1,921
B	Coffman Cove	4	4	144	11	581	13	1	0	606
B	Craig	18	44	1,638	117	5,839	35	11	103	6,105
B	Klawock	6	15	511	34	1,587	0	17	11	1,649
B	Thorne Bay	4	8	419	35	1,486	1	3	0	1,525
B	Other	20	74	3,310	444	12,900	35	39	482	13,900
C	Petersburg	19	26	662	38	2,533	19	6	1	2,597
C	Wrangell	7	7	143	8	497	0	2	1	508
C	Other	6	8	97	0	322	21	2	2	347
D	Port Alexander	4	5	164	8	530	3	1	8	550
D	Sitka	82	141	7,547	566	30,873	108	91	241	31,879
D	Other	12	22	554	3	1,803	4	4	12	1,826
E	Angoon	8	19	634	30	2,118	12	1	2	2,163
E	Auke Bay	25	40	2,303	276	9,742	23	149	6	10,196
E	Juneau	24	40	717	24	2,528	3	19	4	2,578
E	Other	8	17	574	20	2,362	2	6	46	2,436
F	Haines\Skagway	7	8	559	42	2,113	13	7	2	2,177
G	Bartlett Cove	4	5	81	5	259	24	0	8	296
G	Elfin Cove	9	24	1,028	16	3,916	32	13	4	3,981
G	Gustavus	13	29	1,131	43	4,635	10	5	1	4,694
G	Hoonah	6	8	232	2	1,067	0	27	0	1,096
G	Pelican	5	10	384	12	1,417	4	4	0	1,437
G	Other	12	16	958	4	3,228	1	3	3	3,239
H	Yakutat	10	13	814	223	3,306	15	10	4	3,558
Total Southeast		303	605	32,674	2,317	127,521	449	730	949	131,966

*Note:* Participation (number of businesses, vessels, trips, and angler-days) was determined by number of trips, not targeted species. Responses with fewer than four businesses are not reported separately, to protect confidentiality of respondents. Data are current as of 11/09/2015.

<sup>a</sup> Business and vessel regional and total counts are not additive because they can offload at multiple ports.



Appendix I2.—Saltwater logbook participation and effort by area and port of offloading, Southcentral Alaska, 2014.

Area	Port of Offloading	Businesses <sup>a</sup>	Vessels <sup>a</sup>	Trips	Angler-days					
					Resident	Non-Res	Comp	Unknown	Crew	Anglers
J	Port Ashton	10	12	53	43	251	2	2	20	318
J	Seward	58	102	4,596	10,393	25,718	272	148	1,687	38,218
J	Valdez	27	31	732	1,762	2,167	39	27	65	4,060
J	Whittier	18	20	580	1,270	1,866	11	16	60	3,223
J	Other	5	6	134	72	535	3	1	7	618
P	Anchor Point	31	36	965	940	4,152	86	44	72	5,294
P	Deep Creek	52	77	2,573	3,079	10,807	136	72	38	14,132
P	Homer	83	107	4,767	7,094	29,730	236	199	587	37,846
P	Ninilchik	6	7	114	159	390	3	3	16	571
P	Seldovia	9	9	82	46	296	0	0	6	348
P	Other	10	15	272	46	914	8	1	1	970
Q	Kodiak	24	27	844	571	3,439	41	11	313	4,375
Q	Larsen Bay	9	20	519	77	2,050	60	9	81	2,277
Q	Old Harbor	4	8	291	97	870	9	15	5	996
Q	Port Lions	6	7	178	39	590	1	2	4	636
Q	Other	22	30	710	71	2,721	10	11	9	2,822
R	Other	7	9	68	20	170	2	0	12	204
Total Southcentral		274	407	17,478	25,779	86,666	919	561	2,983	116,908

*Note:* Participation (number of businesses, vessels, trips, and angler-days) was determined by number of trips, not targeted species. Responses with fewer than 4 businesses are not reported separately, to protect confidentiality of respondents. Data are current as of 11/09/2015.

<sup>a</sup> Business and vessel regional and total counts are not additive because they can offload at multiple ports.

Appendix I3.—Saltwater logbook participation and effort by region, statewide, 2014.

Region	Businesses <sup>a</sup>	Vessels <sup>a</sup>	Trips	Angler-days				Crew	Anglers
				Resident	Non-Res	Comp	Unknown		
Southeast	303	605	32,674	2,317	127,521	449	730	949	131,966
Southcentral	274	407	17,478	25,779	86,666	919	561	2,983	116,908
Total	571	1,006	50,152	28,096	214,187	1,368	1,291	3,932	248,874

*Note:* Participation (number of businesses, vessels, trips, and angler-days) was determined by number of trips, not targeted species. Responses with fewer than 4 businesses are not reported separately, to protect confidentiality of respondents. Data are current as of 11/09/2015.

<sup>a</sup> Business and vessel regional and total counts are not additive because they can offload at multiple ports.

Appendix I4.—Saltwater logbook salmon participation, effort, and fish kept and released by area and port of offloading, Southeast Alaska, 2014.

						Chinook salmon						Other
						Large		Small		Coho	Sockeye	Salmon
Area	Port of Offloading	Businesses <sup>a</sup>	Vessels <sup>a</sup>	Trips	Anglers	Kept	Released	Kept	Released	Kept	Kept	Kept
A	Ketchikan	64	96	5,399	23,226	3,063	347	277	3,120	17,977	136	17,159
A	Knudson Cove	18	24	1,568	6,681	999	69	63	1,131	6,994	37	6,592
A	Salmon Falls	4	10	249	795	172	17	17	176	2,170	5	748
A	Other	4	16	854	1,921	292	151	36	1,198	1,937	25	961
B	Coffman Cove	4	4	144	606	74	16	8	105	1,233	6	80
B	Craig	18	44	1,638	6,105	4,173	649	109	61	19,385	24	806
B	Klawock	6	15	511	1,649	1,056	116	23	43	5,167	27	261
B	Thorne Bay	4	8	419	1,525	136	51	0	211	2,786	18	1,145
B	Other	20	74	3,310	13,900	6,839	948	83	510	28,488	60	6,415
C	Petersburg	19	26	662	2,597	404	13	29	66	1,202	2	239
C	Wrangell	7	7	143	508	92	19	4	151	204	1	7
C	Other	6	8	97	347	82	22	0	15	677	0	22
D	Port Alexander	4	5	164	550	235	49	6	5	1,025	103	11
D	Sitka	82	141	7,547	31,879	30,182	6,122	207	1,503	69,929	185	3,650
D	Other	12	22	554	1,826	336	30	12	82	2,714	24	393
E	Angoon	8	19	634	2,163	388	111	7	780	4,186	15	779
E	Auke Bay	25	40	2,303	10,196	383	19	50	485	3,522	77	2,345
E	Juneau	24	40	717	2,578	123	16	7	109	560	6	197
E	Other	8	17	574	2,436	195	26	12	55	2,532	25	1,086
F	Haines\Skagway	7	8	559	2,177	135	27	0	1,308	1	0	0
G	Bartlett Cove	4	5	81	296	25	2	0	0	27	6	25
G	Elfin Cove	9	24	1,028	3,981	1,615	226	21	195	4,846	38	554
G	Gustavus	13	29	1,131	4,694	1,029	45	11	100	1,930	35	473
G	Hoonah	6	8	232	1,096	12	13	6	0	31	0	21
G	Pelican	5	10	384	1,437	889	51	8	58	1,214	6	58
G	Other	12	16	958	3,239	197	4	20	87	2,649	2	1,913
H	Yakutat	10	13	814	3,558	407	61	7	53	1,789	2	8
Total Southeast		303	605	32,674	131,966	53,533	9,220	1,023	11,607	185,175	865	45,948

*Note:* Participation (number of businesses, vessels, trips, and angler-days) was determined by number of trips, not targeted species. Responses with fewer than 4 businesses are not reported separately, to protect confidentiality of respondents. Data are current as of 11/09/2015.

<sup>a</sup> Business and vessel regional and total counts are not additive because they can offload at multiple ports.

Appendix I5.—Saltwater logbook salmon participation, effort, and fish kept and released by area and port of offloading, Southcentral Alaska, 2014.

Area	Port of Offloading	Businesses <sup>a</sup>	Vessels <sup>a</sup>	Trips	Anglers	Chinook salmon				Coho Kept	Sockeye Kept	Other Salmon Kept
						Large		Small				
						Kept	Released	Kept	Released			
J	Port Ashton	10	12	53	318	31	0	1	0	220	0	29
J	Seward	58	102	4,596	38,218	919	58	250	56	41,175	323	3,439
J	Valdez	27	31	732	4,060	4	2	4	2	946	5	112
J	Whittier	18	20	580	3,223	29	3	1	4	104	11	137
J	Other	5	6	134	618	0	0	4	0	11	0	76
P	Anchor Point	31	36	965	5,294	185	19	43	9	117	3	75
P	Deep Creek	52	77	2,573	14,132	217	27	72	8	44	7	43
P	Homer	83	107	4,767	37,846	3,998	107	736	107	4,873	177	1,920
P	Ninilchik	6	7	114	571	16	0	4	0	35	2	7
P	Seldovia	9	9	82	348	11	1	6	0	11	0	19
P	Other	10	15	272	970	41	2	10	0	47	0	4
Q	Kodiak	24	27	844	4,375	1,374	14	209	45	1,181	31	179
Q	Larsen Bay	9	20	519	2,277	346	90	140	40	1,047	89	21
Q	Old Harbor	4	8	291	996	304	2	53	4	418	9	27
Q	Port Lions	6	7	178	636	74	0	33	1	267	0	14
Q	Other	22	30	710	2,822	231	11	152	136	1,824	479	153
R	Other	7	9	68	204	12	0	0	0	171	0	0
Total Southcentral		274	407	17,478	116,908	7,792	336	1,718	412	52,491	1,136	6,255

*Note:* Participation (number of businesses, vessels, trips, and angler-days) was determined by number of trips, not targeted species. Responses with fewer than 4 businesses are not reported separately, to protect confidentiality of respondents. Data are current as of 11/09/2015.

<sup>a</sup> Business and vessel regional and total counts are not additive because they can offload at multiple ports.

Appendix I6.—Saltwater logbook salmon participation, effort, and fish kept and released by region, statewide, 2014.

Region	Businesses <sup>a</sup>	Vessels <sup>a</sup>	Trips	Anglers	Chinook salmon				Coho Kept	Sockeye Kept	Other Salmon Kept
					Large		Small				
					Kept	Released	Kept	Released			
Southeast	303	605	32,674	131,966	53,533	9,220	1,023	11,607	185,175	865	45,948
Southcentral	274	407	17,478	116,908	7,792	336	1,718	412	52,491	1,136	6,255
Total	571	1,006	50,152	248,874	61,325	9,556	2,741	12,019	237,666	2,001	52,203

*Note:* Participation (number of businesses, vessels, trips, and angler-days) was determined by number of trips, not targeted species. Responses with fewer than 4 businesses are not reported separately, to protect confidentiality of respondents. Data are current as of 11/09/2015.

<sup>a</sup> Business and vessel regional and total counts are not additive because they can offload at multiple ports.

Appendix I7.—Saltwater logbook bottomfish participation, effort, kept and released by area and port of offloading, Southeast Alaska, 2014.

Area	Port of Offloading	Businesses <sup>a</sup>	Vessels <sup>a</sup>	Trips	Anglers	Halibut		Lingcod		Pelagic		Rockfish		Yelloweye		Non-Pelagic		Sablefish		Shark
						Kept	Released	Kept	Released	Kept	Released	Kept	Released	Kept	Released	Kept	Released	Kept	Released	
A	Ketchikan	64	96	5,399	23,226	5,197	2,423	311	129	2,342	163	1,632	105	6,220	580	36		3	1	
A	Knudson Cove	18	24	1,568	6,681	1,055	206	118	35	918	14	167	2	897	43	15		0	0	
A	Salmon Falls	4	10	249	795	324	7	14	2	81	6	35	1	195	3	0		0	0	
A	Other	4	16	854	1,921	562	155	9	7	380	2	234	19	937	96	1		0	0	
B	Coffman Cove	4	4	144	606	501	237	10	3	116	4	18	0	114	6	5		0	0	
B	Craig	18	44	1,638	6,105	5,042	4,732	925	383	8,647	454	917	32	2,268	149	8		0	0	
B	Klawock	6	15	511	1,649	1,384	787	116	59	1,810	88	112	8	508	51	2		0	0	
B	Thorne Bay	4	8	419	1,525	944	516	37	97	222	4	112	6	834	26	0		0	0	
B	Other	20	74	3,310	13,900	9,343	5,739	1,238	583	9,496	1,478	1,218	93	3,687	740	25		0	0	
C	Petersburg	19	26	662	2,597	1,747	1,483	12	1	661	86	66	5	153	9	5		0	0	
C	Wrangell	7	7	143	508	120	107	2	1	21	7	6	0	53	29	0		0	0	
C	Other	6	8	97	347	204	159	9	15	189	7	24	2	65	3	0		0	0	
D	Port Alexander	4	5	164	550	361	232	86	43	545	62	102	2	53	6	20		0	0	
D	Sitka	82	141	7,547	31,879	20,312	10,661	1,656	2,793	59,766	1,680	4,216	739	9,313	423	1,420		24	10	
D	Other	12	22	554	1,826	1,125	503	56	24	1,261	383	172	5	527	12	5		0	0	
E	Angoon	8	19	634	2,163	1,581	1,492	10	7	566	37	98	11	881	157	392		4	0	
E	Auke Bay	25	40	2,303	10,196	2,611	2,529	1	2	1,612	8	73	0	1,603	31	4,970		8	0	
E	Juneau	24	40	717	2,578	744	577	9	6	591	158	47	4	251	34	0		0	0	
E	Other	8	17	574	2,436	1,935	1,387	88	144	6,543	72	508	39	1,055	29	14		4	0	
F	Haines\ Skagway	7	8	559	2,177	163	287	0	4	0	0	0	0	0	0	0		0	0	
G	Bartlett Cove	4	5	81	296	189	259	7	5	8	10	3	0	1	11	0		0	0	
G	Elfin Cove	9	24	1,028	3,981	2,330	2,478	382	708	5,747	165	549	108	1,492	67	7		0	0	
G	Gustavus	13	29	1,131	4,694	3,441	4,036	145	39	1,251	66	238	3	231	2	0		0	0	
G	Hoonah	6	8	232	1,096	504	1,291	1	0	0	1	7	0	6	0	0		0	0	
G	Pelican	5	10	384	1,437	962	949	105	118	1,690	100	154	4	125	6	56		0	0	
G	Other	12	16	958	3,239	3,481	2,915	18	10	97	5	33	4	71	9	0		0	0	
H	Yakutat	10	13	814	3,558	3,429	1,248	932	251	3,651	53	95	24	502	19	2		0	0	
Total Southeast		303	605	32,674	131,966	69,591	47,395	6,297	5,469	108,211	5,113	10,836	1,216	32,042	2,541	6,983		43	11	

Note: Participation (number of businesses, vessels, trips, and angler-days) was determined by number of trips, not targeted species. Responses with fewer than 4 businesses are not reported separately, to protect confidentiality of respondents. Data are current as of 11/09/2015.

<sup>a</sup> Business and vessel regional and total counts are not additive because they can offload at multiple ports.

Appendix I8.—Saltwater logbook bottomfish participation, effort, kept and released by area and port of offloading, Southcentral Alaska, 2014.

Area	Port of Offloading	Businesses <sup>a</sup>	Vessels <sup>a</sup>	Trips	Anglers	Halibut		Lingcod		Pelagic		Rockfish		Yelloweye		Non-Pelagic		Sablefish		Shark
						Kept	Released	Kept	Released	Kept	Released	Kept	Released	Kept	Released	Kept	Released	Kept	Released	
J	Port Ashton	10	12	53	318	433	44	70	10	482	1	96	0	118	0	0	0	0	0	0
J	Seward	58	102	4,596	38,218	42,337	16,540	4,249	1,427	42,125	1,437	4,711	180	4,894	264	241	5	5	5	5
J	Valdez	27	31	732	4,060	3,692	3,065	1,208	421	2,476	85	1,362	179	380	59	16	0	0	0	0
J	Whittier	18	20	580	3,223	4,081	2,194	350	174	2,831	376	436	6	954	82	4	1	0	0	0
J	Other Anchor	5	6	134	618	687	284	91	128	99	28	163	17	137	9	0	0	0	0	0
P	Point	31	36	965	5,294	9,334	6,432	429	92	1,249	19	190	7	128	1	0	0	0	0	0
P	Deep Creek	52	77	2,573	14,132	26,755	25,772	21	3	191	8	22	0	14	0	0	0	0	1	1
P	Homer	83	107	4,767	37,846	66,959	72,955	1,683	463	13,358	565	991	14	630	92	3	2	1	1	1
P	Ninilchik	6	7	114	571	963	622	36	0	178	0	45	0	5	0	0	0	0	0	0
P	Seldovia	9	9	82	348	634	875	6	0	17	0	34	2	2	0	0	0	0	0	0
P	Other	10	15	272	970	1,560	2,986	1	0	31	0	7	0	1	0	0	0	0	0	0
Q	Kodiak	24	27	844	4,375	5,352	1,462	610	44	11,909	839	495	1	1,261	70	0	0	0	0	0
Q	Larsen Bay	9	20	519	2,277	3,163	4,386	59	17	1,472	651	354	74	149	15	0	0	0	0	0
Q	Old Harbor	4	8	291	996	606	277	189	36	1,380	378	116	16	58	40	3	0	0	0	0
Q	Port Lions	6	7	178	636	729	188	28	1	1,005	87	44	0	38	0	0	0	0	0	0
Q	Other	22	30	710	2,822	2,431	1,898	378	191	2,305	2,825	292	140	84	306	0	30	0	0	0
R	Other	7	9	68	204	165	88	4	7	100	197	0	0	6	0	0	0	0	0	0
Total Southcentral		273	396	19,453	138,648	212,277	165,661	11,517	4,872	70,670	6,458	9,573	501	6,897	647	154	10	4	4	4

Note: Participation (number of businesses, vessels, trips, and angler-days) was determined by number of trips, not targeted species. Responses with fewer than 4 businesses are not reported separately, to protect confidentiality of respondents. Data are current as of 11/09/2015.

<sup>a</sup> Business and vessel regional and total counts are not additive because they can offload at multiple ports.

Appendix I9.—Saltwater logbook bottomfish participation, effort, kept and released by region, statewide, 2014.

Region	Businesses <sup>a</sup>	Vessels <sup>a</sup>	Trips	Anglers	Rockfish													Shark
					Halibut		Lingcod		Pelagic		Yelloweye		Non-Pelagic		Sablefish			
					Kept	Released	Kept	Released	Kept	Released	Kept	Released	Kept	Released	Kept	Released		
Southeast	303	605	32,674	131,966	69,591	47,395	6,297	5,469	108,211	5,113	10,836	1,216	32,042	2,541	6,983	43	11	
Southcentral	274	407	17,478	116,908	169,881	140,068	9,412	3,014	81,208	7,496	9,358	636	8,859	938	267	38	7	
Total	571	1,006	50,152	248,874	239,472	187,463	15,709	8,483	189,419	12,609	20,194	1,852	40,901	3,479	7,250	81	18	

*Note:* Participation (number of businesses, vessels, trips, and angler-days) was determined by number of trips, not targeted species. Responses with fewer than 4 businesses are not reported separately, to protect confidentiality of respondents. Data are current as of 11/09/2015.

<sup>a</sup> Business and vessel regional and total counts are not additive because they can offload at multiple ports.