

Fishery Data Series No. 14-23

**Participation, Effort, and Harvest in the Sport Fish
Business/Guide Licensing and Logbook Programs,
2013**

by

Dora Sigurdsson

and

Bob Powers

April 2014

Alaska Department of Fish and Game

Divisions of Sport Fish and Commercial Fisheries



Symbols and Abbreviations

The following symbols and abbreviations, and others approved for the *Système International d'Unités* (SI), are used without definition in the following reports by the Divisions of Sport Fish and of Commercial Fisheries: Fishery Manuscripts, Fishery Data Series Reports, Fishery Management Reports, and Special Publications. All others, including deviations from definitions listed below, are noted in the text at first mention, as well as in the titles or footnotes of tables, and in figure or figure captions.

Weights and measures (metric)		General		Mathematics, statistics	
centimeter	cm	Alaska Administrative Code	AAC	<i>all standard mathematical signs, symbols and abbreviations</i>	
deciliter	dL	all commonly accepted abbreviations	e.g., Mr., Mrs., AM, PM, etc.	alternate hypothesis	H_A
gram	g	all commonly accepted professional titles	e.g., Dr., Ph.D., R.N., etc.	base of natural logarithm	e
hectare	ha	at	@	catch per unit effort	CPUE
kilogram	kg	compass directions:		coefficient of variation	CV
kilometer	km	east	E	common test statistics	(F, t, χ^2 , etc.)
liter	L	north	N	confidence interval	CI
meter	m	south	S	correlation coefficient	
milliliter	mL	west	W	(multiple)	R
millimeter	mm	copyright	©	correlation coefficient (simple)	r
		corporate suffixes:		covariance	cov
Weights and measures (English)		Company	Co.	degree (angular)	$^\circ$
cubic feet per second	ft ³ /s	Corporation	Corp.	degrees of freedom	df
foot	ft	Incorporated	Inc.	expected value	E
gallon	gal	Limited	Ltd.	greater than	>
inch	in	District of Columbia	D.C.	greater than or equal to	\geq
mile	mi	et alii (and others)	et al.	harvest per unit effort	HPUE
nautical mile	nmi	et cetera (and so forth)	etc.	less than	<
ounce	oz	exempli gratia	e.g.	less than or equal to	\leq
pound	lb	(for example)		logarithm (natural)	ln
quart	qt	Federal Information Code	FIC	logarithm (base 10)	log
yard	yd	id est (that is)	i.e.	logarithm (specify base)	log ₂ , etc.
		latitude or longitude	lat or long	minute (angular)	'
Time and temperature		monetary symbols (U.S.)	\$, ¢	not significant	NS
day	d	months (tables and figures): first three letters	Jan, ..., Dec	null hypothesis	H_0
degrees Celsius	°C	registered trademark	®	percent	%
degrees Fahrenheit	°F	trademark	™	probability	P
degrees kelvin	K	United States (adjective)	U.S.	probability of a type I error (rejection of the null hypothesis when true)	α
hour	h	United States of America (noun)	USA	probability of a type II error (acceptance of the null hypothesis when false)	β
minute	min	U.S.C.	United States Code	second (angular)	"
second	s	U.S. state	use two-letter abbreviations (e.g., AK, WA)	standard deviation	SD
Physics and chemistry				standard error	SE
all atomic symbols				variance	
alternating current	AC			population sample	Var
ampere	A			sample	var
calorie	cal				
direct current	DC				
hertz	Hz				
horsepower	hp				
hydrogen ion activity (negative log of)	pH				
parts per million	ppm				
parts per thousand	ppt, ‰				
volts	V				
watts	W				

FISHERY DATA SERIES NO. 14-23

**PARTICIPATION, EFFORT, AND HARVEST IN THE SPORT FISH
BUSINESS/GUIDE LICENSING AND LOGBOOK PROGRAMS, 2013**

by

Dora Sigurdsson

and

Bob Powers

Division of Sport Fish Research and Technical Services, Anchorage

Alaska Department of Fish and Game
Division of Sport Fish, Research and Technical Services
333 Raspberry Road, Anchorage, Alaska, 99518-1599

April 2014

ADF&G Fishery Data Series was established in 1987 for the publication of Division of Sport Fish technically oriented results for a single project or group of closely related projects, and in 2004 became a joint divisional series with the Division of Commercial Fisheries. Fishery Data Series reports are intended for fishery and other technical professionals and are available through the Alaska State Library and on the Internet: <http://www.adfg.alaska.gov/sf/publications/>. This publication has undergone editorial and peer review.

*Dora Sigurdsson and Bob Powers,
Alaska Department of Fish and Game, Division of Sport Fish, Research and Technical Services,
333 Raspberry Road, Anchorage, AK 99518-1599, USA*

This document should be cited as:

Sigurdsson, D., and B. Powers. 2014. Participation, effort, and harvest in the sport fish business/guide licensing and logbook programs, 2013. Alaska Department of Fish and Game, Fishery Data Series No. 14-23, Anchorage.

The Alaska Department of Fish and Game (ADF&G) administers all programs and activities free from discrimination based on race, color, national origin, age, sex, religion, marital status, pregnancy, parenthood, or disability. The department administers all programs and activities in compliance with Title VI of the Civil Rights Act of 1964, Section 504 of the Rehabilitation Act of 1973, Title II of the Americans with Disabilities Act (ADA) of 1990, the Age Discrimination Act of 1975, and Title IX of the Education Amendments of 1972.

If you believe you have been discriminated against in any program, activity, or facility please write:

ADF&G ADA Coordinator, P.O. Box 115526, Juneau, AK 99811-5526
U.S. Fish and Wildlife Service, 4401 N. Fairfax Drive, MS 2042, Arlington, VA 22203
Office of Equal Opportunity, U.S. Department of the Interior, 1849 C Street NW MS 5230, Washington DC 20240

The department's ADA Coordinator can be reached via phone at the following numbers:

(VOICE) 907-465-6077, (Statewide Telecommunication Device for the Deaf) 1-800-478-3648,
(Juneau TDD) 907-465-3646, or (FAX) 907-465-6078

For information on alternative formats and questions on this publication, please contact:

ADF&G Division of Sport Fish, Research and Technical Services, 333 Raspberry Road, Anchorage AK 99518 (907) 267-2375.

TABLE OF CONTENTS

	Page
LIST OF TABLES.....	ii
LIST OF FIGURES.....	ii
LIST OF APPENDICES.....	iii
ABSTRACT.....	1
BACKGROUND.....	1
Guide and Business Registration and Licensing.....	1
Logbooks.....	2
Vessel Registration.....	5
METHODS.....	5
Guide and Business Licensing.....	5
Logbook Data Collection.....	6
Saltwater Logbook.....	7
Freshwater Logbook.....	8
Vessel Registration.....	9
Logbook Outreach, validation and Verification.....	9
Outreach.....	9
Validation.....	10
Verification.....	12
RESULTS.....	12
Guide and Business Licensing.....	12
Vessels.....	15
Saltwater.....	15
Freshwater.....	16
Trips.....	16
Saltwater.....	16
Freshwater.....	17
Logbook Trip Effort and Harvest.....	17
Saltwater.....	18
Freshwater.....	19
DISCUSSION.....	21
Guide and Business Licensing.....	21
Logbooks.....	21
Consideration of an Electronic Reporting Option.....	22
Verification of Logbook Harvest Data.....	23
ACKNOWLEDGEMENTS.....	23
REFERENCES CITED.....	24

TABLE OF CONTENTS

	Page
APPENDIX A. SPORT FISH BUSINESS OWNER/GUIDE LICENSE APPLICATION.....	25
APPENDIX B. SALTWATER LOGBOOK FORM.....	29
APPENDIX C. FRESHWATER LOGBOOK FORMS.....	33
APPENDIX D. VESSEL REGISTRATION FORMS, DECALS AND TAGS.....	37
APPENDIX E. SALTWATER EDITING RESULTS.....	41
APPENDIX F. FRESHWATER EDITING RESULTS.....	43
APPENDIX G. ELECTRONIC REPORTING SURVEY.....	45
APPENDIX H. FRESHWATER LOGBOOK SUMMARIES BY AREA AND SITE.....	49
APPENDIX I. SALTWATER LOGBOOK SUMMARIES BY AREA AND PORT OF OFFLOADING.....	71

LIST OF TABLES

Table		Page
1.	Division of Sport Fish regions and management areas.....	3
2.	Number of licensed businesses and guides by region, 2009–2013.....	13
3.	Number of active saltwater businesses and guides by region, 2009–2013.....	14
4.	Number of active freshwater businesses and guides by region, 2009–2013.....	14
5.	Number of registered and active saltwater vessels by region, 2009–2013.....	15
6.	Number of active saltwater vessels that made at least one trip in each target category, by region, 2009–2013.....	15
7.	Number of registered freshwater vessels by year and region, 2009–2013.....	16
8.	Number of saltwater trips by targeted species by region, 2009–2013.....	16
9.	Number of freshwater trips by region, 2009–2013.....	17
10.	Saltwater and freshwater trips and angler days by region, 2009–2013.....	17
11.	Saltwater salmon effort and harvest by region and angler type, 2013.....	18
12.	Saltwater bottomfish effort and harvest by species, region and angler type, 2013.....	19
13.	Freshwater effort and harvest by species, region and angler type, 2013.....	20

LIST OF FIGURES

Figure		Page
1.	Map of Alaska and Division of Sport Fish regions and management areas.....	4
2.	International Pacific Halibut Commission regulatory areas.....	5

LIST OF APPENDICES

Appendix	Page
A1. Sport fish business owner/guide license application, 2013.	26
B1. Saltwater charter logbook form, 2013.	30
C1. Freshwater guide logbook form, 2013.	34
D1. Saltwater sport fish charter logbook sign-out and vessel registration form, 2013.	38
D2. Freshwater sport fish guide vessel registration form, 2013.	39
D3. Vessel decal, 2013.	40
D4. Vessel tab, 2012.	40
E1. Saltwater editing results, 2013.	42
F1. Freshwater editing results, 2013.	44
G1. Electronic logbook reporting mail-in survey, 2013.	46
H1. Freshwater logbook participation by area and site, Southeast Alaska, 2013.	50
H2. Freshwater logbook participation by area and site, Southcentral Alaska, 2013.	51
H3. Freshwater logbook participation by area and site, Arctic-Yukon-Kuskokwim Alaska, 2013.	55
H4. Freshwater logbook participation by region, Statewide, 2013.	56
H5. Freshwater logbook angler days and species kept by area and site, Southeast Alaska, 2013.	57
H6. Freshwater logbook angler days and species kept by area and site, Southcentral Alaska, 2013.	58
H7. Freshwater logbook angler days and species kept by area and site, Arctic-Yukon-Kuskokwim Alaska, 2013.	62
H8. Freshwater logbook angler days and species kept by region, Statewide, 2013.	63
H9. Freshwater logbook angler days and species released by area and site, Southeast Alaska, 2013.	64
H10. Freshwater logbook angler days and species released by area and site, Southcentral Alaska, 2013.	65
H11. Freshwater logbook angler days and species released by area and site, Arctic-Yukon-Kuskokwim Alaska, 2013.	69
H12. Freshwater logbook angler days and species released by region, Statewide, 2013.	70
I1. Saltwater logbook participation and effort by area and port of offloading, Southeast Alaska, 2013.	72
I2. Saltwater logbook participation and effort by area and port of offloading, Southcentral Alaska, 2013.	73
I3. Saltwater logbook participation and effort by region, statewide, 2013.	74
I4. Saltwater logbook salmon participation, effort, kept and released by area and port of offloading, Southeast Alaska, 2013.	75
I5. Saltwater logbook salmon participation, effort, kept and released by area and port of offloading, Southcentral Alaska, 2013.	76
I6. Saltwater logbook salmon participation, effort, kept and released by region, statewide, 2013.	77
I7. Saltwater logbook bottomfish participation, effort, kept and released by area and port of offloading, Southeast Alaska, 2013.	78
I8. Saltwater logbook bottomfish participation, effort, kept and released by area and port of offloading, Southcentral Alaska, 2013.	79
I9. Saltwater logbook bottomfish participation, effort, kept and released by region, statewide, 2013.	80

ABSTRACT

In 2013, 1,178 sport fishing businesses and 2,767 guides were licensed under the Alaska Department of Fish and Game guide and business licensing program, signifying intent to provide sport fishing services in Alaska. Of the 1,178 sport fishing businesses registered in 2013, 1,056 were combination owner/guide licenses. Based on the 2013 physical addresses of both the businesses and guides, 87% of the businesses were residents of Alaska, and 13% were from other residency strata (defined as nonresidents), 65% of the guides were residents and 35% were nonresidents.

Of the 2,135 saltwater logbooks issued in 2013, 1,759 were activated, and of the 2,148 freshwater logbooks issued in 2013, 1,474 were activated. Of those businesses that submitted logbook information in 2013, 54% offered saltwater services, and 46% offered freshwater guided services. In 2013, logbook records show that 973 saltwater vessels were active. Of those active saltwater vessels, 59% were active in Southeast Alaska and 41% were active in Southcentral Alaska.

A total of 49,034 saltwater charter trips and 257,647 saltwater angler days of fishing occurred in 2013. Of the statewide saltwater trips, 81% of the saltwater angler days were nonresidents, 13% were residents and 6% were crew, comped fishing (nonpaying anglers) or unknown residency. In freshwater, 38,086 trips and 112,077 angler days occurred in 2013. Of the statewide freshwater trips, 90% of the angler days were nonresidents, 8% were residents, and 2% were crew, comped fishing or unknown residency.

2013 saltwater salmon harvests show that coho and king salmon made up 72% and 8% of the total salmon harvest respectively statewide. Saltwater bottomfish harvests in 2013 show that Pacific halibut were the predominant species with 53% of the total saltwater bottomfish harvest statewide. In freshwater, coho salmon were the predominant harvested species, followed by sockeye and then king salmon.

Key words: Sport fishing, guide and business registration, freshwater logbook, saltwater logbook, participation, effort, harvest, sport fishing vessel, Pacific halibut, salmon, bottomfish, Southeast Alaska, Southcentral Alaska

BACKGROUND

The Alaska Department of Fish and Game (ADF&G) Division of Sport Fish has operated a program to register and license both sport fishing guides and sport fishing guide businesses since 1998. Saltwater information on guided sport fishing participation, effort, and harvest has been collected since 1998. Freshwater guided information on fishing participation, effort and harvest has been collected since 2005, with summary information available since 2006 (Sigurdsson and Powers 2009–2013). This report briefly summarizes the approach, history, and results of this program for 2013.

GUIDE AND BUSINESS REGISTRATION AND LICENSING

The activities of the guided sport fishing industry in Alaska have remained steady after a drop in 2009 with implications to fish allocation and management decisions. Resolution of allocation and management issues was hampered by a lack of information regarding the industry and its impact on fishery resources in many parts of Alaska. The sport fishing guide and business registration and licensing programs were designed to provide a comprehensive system to better define this diverse industry throughout Alaska. A brief history of the statewide registration and licensing process follows.

Beginning in May 1995 the owner(s) of any business that engaged in sport fish guiding of anglers anywhere in Alaska were required to register their business information, employees acting as sport fishing guides for the business, and list all vessels used for guiding. In 1997, sport fishing guides were required to register and provide information about the employing business (Dean 2001; Dean and Howe 1999).

In 1998, the Alaska Board of Fisheries (BOF) adopted new statewide sport fishing guide registration regulations and definitions during their February Statewide Finfish meeting in Girdwood, Alaska (5 AAC 75.075: *Sport Fishing Services and Sport Fishing Guide Services; License Requirements; Regulations of Activities*). It should be stressed that this was a registration process, not a licensing process. No fees were required and businesses and guides were allowed to provide services in any area of the state, assuming other regulatory requirements were met. In 1998, ADF&G continued to register guide businesses and guides, but stopped registering charter vessels, because the Commercial Fisheries Entry Commission implemented a licensing program for all vessels to be used for guided sport fishing. From 1998 through 2004, ADF&G continued to register sport fishing businesses and sport fishing guides.

On May 11, 2004, the Alaska Legislature adopted House Bill 452 (HB 452), that established licensing requirements for sport fishing guide business owners and sport fishing guides on a statewide basis. This bill was created to establish minimum professional standards required of both freshwater and saltwater sport fish guides and business owners before a license could be obtained. The standards were established to protect consumers and to promote the viability and legitimacy of a professional sport fish guide industry. Businesses providing sport fish guided services were now required to obtain a State of Alaska Occupational Business License and hold liability insurance with a minimum of \$300,000 coverage for all incidents in a year (AS 16.40.260). Licensed sport fishing guides were required (1) to be citizens of the United States, Canada, or Mexico, (2) hold a current first aid card, (3) have a current year Alaska sport fishing license and (4) have a valid U.S. Coast Guard operator's license if they were to operate a motorized vessel in navigable waters. License application forms and the information collected have remained consistent in design since 2006.

LOGBOOKS

In February, 1998 the BOF adopted regulations (5 AAC 75.076) requiring logbooks for saltwater charter vessels statewide. Information on the amounts and locations of charter activity and actual participation and harvest by individual vessels and businesses was needed by the BOF for allocation and management of Chinook salmon *Oncorhynchus tshawytscha*, rockfish *Sebastes* spp., and lingcod *Ophiodon elongatus*, and by the North Pacific Fisheries Management Council (NPFMC) for allocation of Pacific halibut *Hippoglossus stenolepis*. To meet these information needs ADF&G implemented a saltwater sport fishing charter vessel logbook program for Division of Sport Fish Region I, Southeast Alaska (Southeast), and Region II, Southcentral Alaska (Southcentral; Table 1; Figure 1).

In 1999, the NPFMC was considering proposals to limit the guided sport halibut harvest. Their concerns were: (1) that growth in this fishery was reallocating resources away from the individual fishing quota commercial longline fishery, and (2) that in some areas there was overcapitalization and localized depletion of the halibut resource. NPFMC endorsed a two-prong approach to resolve the perceived impact of increased guided charter halibut fishing. The first was establishment of guideline harvest limits for International Pacific Halibut Commission (IPHC) Areas 2C and 3A (Figure 2), and the second was a process to establish local area management plans for halibut fisheries in coastal communities.

Since 1998, the logbook design has undergone annual revisions, driven primarily by changes or improvements in the collection of halibut, lingcod and rockfish data through the logbook program, Statewide Harvest Survey, and expanded port sampling programs. House Bill 452,

adopted in 2004, not only established new licensing requirements, but also established a logbook reporting requirement for all freshwater businesses in addition to the existing saltwater reporting requirements. For various reasons, both technical and policy-based, information on halibut harvests was not collected from 2002 through 2005. The collection of halibut data was resumed in 2006. In addition, the 2006 logbook was redesigned to require reporting of angler license numbers and the harvest and release numbers by angler in an effort to improve reporting and facilitate evaluation of the quality of logbook data.

The data from logbooks are compiled to show where fishing effort occurs, the extent of participation, and the species and numbers of fish kept and released by individual clients. This information is used for regulation decisions and the development and management of fisheries, for project evaluation, and for formulation of department policies and priorities that reflect angler needs, concerns, and preferences. It also provides ADF&G with a tool to promote management of Alaska's resources for sustained yield.

Table 1.—Division of Sport Fish regions and management areas.

Regions	
SE	Southeast Alaska
SC	Southcentral Alaska
AYK	Arctic-Yukon-Kuskokwim
Areas	
Southeast Alaska	
A	Ketchikan
B	Prince of Wales Island
C	Kake, Petersburg, Wrangell, Stikine
D	Sitka
E	Juneau
F	Haines-Skagway
G	Glacier Bay
H	Yakutat
Southcentral Alaska	
J	Prince William Sound/North Gulf Coast
K	Knik Arm Drainage
L	Anchorage
M	Susitna River Drainage
N	West Side Cook Inlet
P	Kenai Peninsula
Q	Kodiak
R	Alaska Peninsula-Aleutian Islands
S	Kvichak River Drainage
T	Nushagak, Wood River and Togiak
Arctic-Yukon-Kuskokwim	
I	Upper Copper River Drainage
U	Tanana River Drainage
V	Kuskokwim River-Kuskokwim Bay Drainages
W	Seward Peninsula/Norton Sound
X	Northwest Alaska
Y	Yukon River Drainage
Z	North Slope/Brooks Range

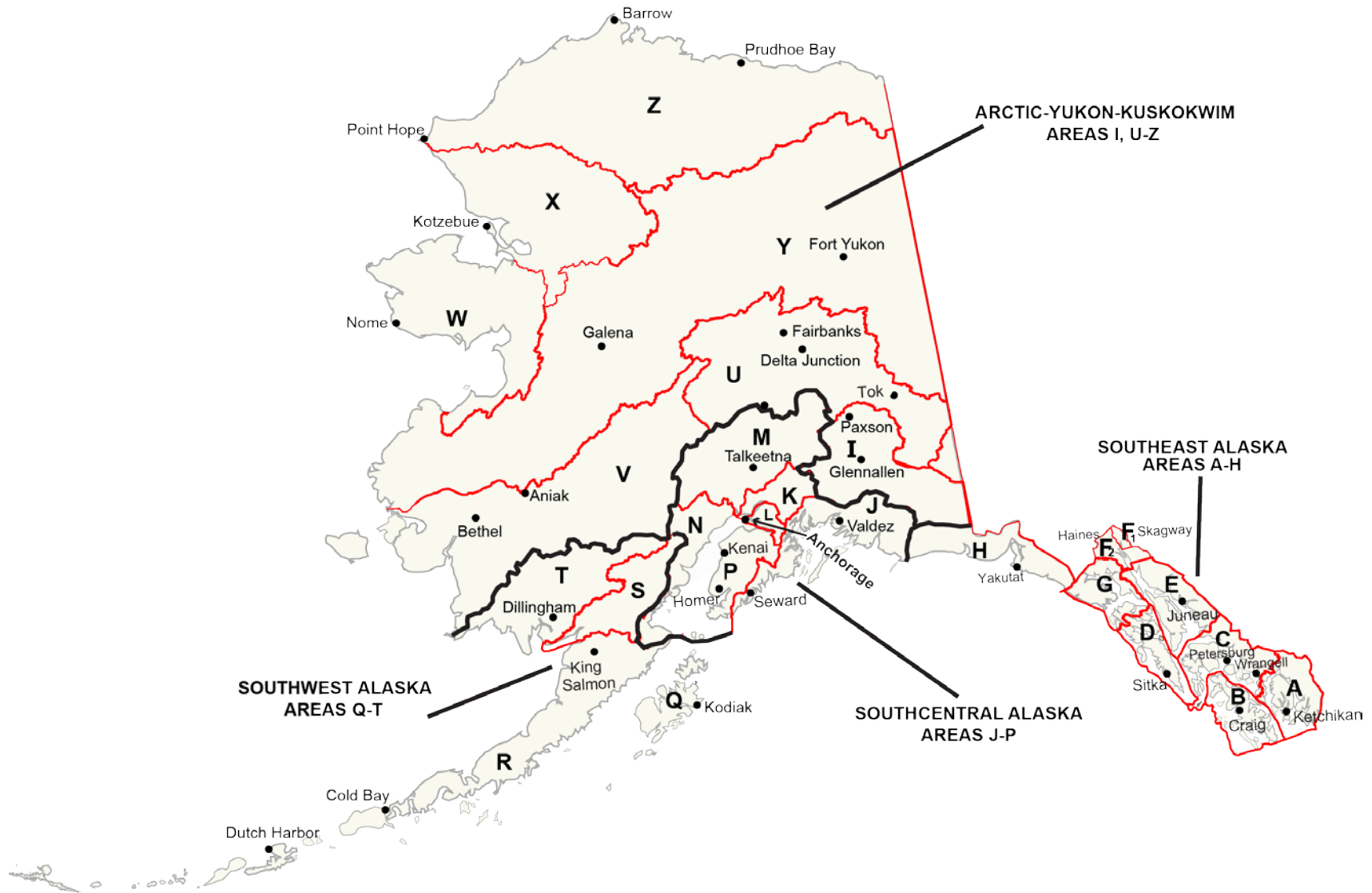


Figure 1.—Map of Alaska and Division of Sport Fish regions and management areas.

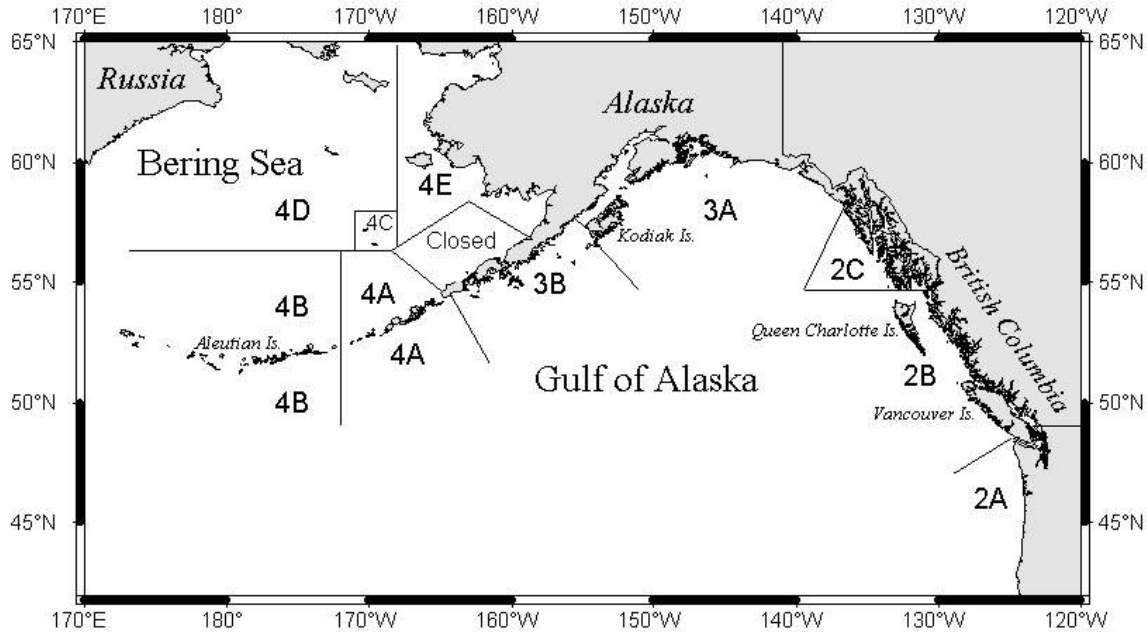


Figure 2.—International Pacific Halibut Commission (IPHC) regulatory areas.

Currently, a logbook record is required for every chartered or guided trip taken with clients, defined as an outing with one group of clients that ends when the clients and their fish (if fish were kept) are offloaded. Each trip is associated with an individual licensed business and guide.

VESSEL REGISTRATION

In addition to establishing a licensing program and statewide freshwater logbook requirement, HB 452 included establishment of a vessel registration program to be conducted by ADF&G as part of the logbook program to monitor the number of vessels used in the guided marine and freshwater fisheries. All guide industry boats used in marine or freshwater are referred to as “charter or guide boats” regardless of their size or the manner in which they are used. All vessels used in the charter guide industry were required to be registered with ADF&G.

METHODS

GUIDE AND BUSINESS LICENSING

Businesses and guides can be licensed to provide sport fishing guided services if they meet the minimum qualifications specified in regulation (AS 16.40.260 and AS 16.40.270).

Beginning in 2006, each January the Division of Sport Fish mailed renewal license applications to each sport fishing guide and sport fishing business that was licensed in the previous year. In addition, guides and businesses could obtain a license in person at local ADF&G offices or through the Internet.

The license application could be used in three ways (Appendix A):

- To license a business only.
- To license a guide only.
- To license a combination business and guide (an owner/operator where the owner also conducted the guiding).

The license application collected business owner or guide name, permanent mailing information, permanent and inseason phone number if applicable. Additionally, the name of the business, name of the business owner, occupational business license number, insurance company information and insurance binder or policy number and effective dates were required. Guide information is collected on citizenship; a guide must be a citizen of the United States, Canada, or Mexico. Additional information collected includes current first aid status and the number of the current year Alaska sport fishing license along with any tags or permits required for specific fisheries. If a guide planned to operate a motorized vessel on navigable waters with clients on board, the guide was required to have a current U.S. Coast Guard Operator's License and provide that number and expiration date on the license application.

Unique license numbers were assigned according to how licensing occurred. License numbers did not remain the same in subsequent years. If an operator or guide licensed at an ADF&G office, a pre-numbered application was used and that number became the license number for that year. Renewal or internet license applications are numbered sequentially by the computer database that processed the information

Once the license applications were reviewed for completeness and accuracy, Division of Sport Fish mailed a wallet-sized license to each guide or business. Those applicants who licensed by going to an ADF&G office received a copy of their license, which allowed them to operate immediately. Those who applied on the Internet, or with the renewal application, were required to wait until they received their license in the mail prior to operating or providing guiding services.

LOGBOOK DATA COLLECTION

Logbook reporting is a mandatory process governed by regulation (AS 16.40.280). As such, the reporting process was considered to be a census of all charter/guided trips. Logbooks were available and issued from ADF&G area offices located statewide, in addition to a vendor located in Seward.

The statewide logbook has remained consistent in design since 2006, with few annual changes occurring in logbook layout. In 2006, both the freshwater and saltwater logbooks were redesigned to require reporting of angler license numbers and the harvest and release numbers by individual angler in an effort to improve reporting and facilitate evaluation of the quality of logbook data. Annual design changes in the saltwater logbook were driven primarily by changes or improvements in the collection of halibut and rockfish data, and by requests from the NPFMC for information needed for allocation of halibut. Other changes were made to improve or simplify the use of the forms based on operator input, and to improve the collection of client and crew harvest information.

In 2011, ADF&G worked collaboratively with National Marine Fisheries Service (NMFS) to modify the logbook requirements associated with the federal Charter Halibut Permit (CHP) program, a program that establishes limited access to the guided halibut fishery. The 2011 saltwater logbook was designed to capture CHP numbers associated with the permits granted by the NMFS to qualifying participants in the sport fish charter halibut fishery.

In July, 2011, NOAA Fisheries proposed regulations to authorize guided angler fish (GAF) for the charter halibut fisheries in area 2C and area 3A within a catch sharing plan (CSP). GAF would have offered charter anglers in these areas an opportunity to harvest halibut in addition to,

or instead of, the halibut harvest under charter angler daily limits. The proposed GAF regulations included a requirement for charter operators to record GAF harvest information in the saltwater logbook. ADF&G again worked with the NMFS to review the options of collecting halibut kept data harvested under the proposed catch sharing plan (CSP) as Guided Angler Fish (GAF) by redesigning the logbook. Although the 2012 and 2013 saltwater logbooks were designed to capture GAF halibut, the federal GAF proposal was not in effect in 2012 and 2013; the 2014 saltwater logbook will be designed to capture GAF halibut information.

Saltwater Logbook

A saltwater logbook consisted of the cover page, schedule of reporting deadlines, one logbook sign out sheet to show the business to which the logbook was issued and to register the saltwater vessel, a set of instructions for filling out the information on the logbook sheets, and 50 data sheets to record trip information (Appendix B). The following information was recorded on the 2013 saltwater logbook data sheets:

- Date that fishing took place.
- Time that trip ended.
- ADF&G guide license number for the guide leading the trip.
- CHP Number.
- Primary statistical area fished while targeting salmon or bottomfish.
- Number of Hours fished.
- Port or community where trip ended.
- Guided Angler Fish (GAF) Permit Number
- Crew, client, and “comped” angler’s current ADF&G sport fishing license or PID (permanent fishing license) number, the word “YOUTH” for anglers under 16.
- First and last name of each client and youth angler.
- Client residency (Alaska resident/nonresident of Alaska).
- Indication if angler was a crew member or if angler was “comped.”
- Signature of angler who kept halibut while fishing in IPHC area 2C only (Southeast).
- A breakdown by fish species kept and released by each individual angler.

During a saltwater charter trip, the operator must decide if his/her gear or fishing methods are effectively targeting bottomfish, salmon or both. A 6-digit statistical code where most of the fish were caught or targeted is logged for each trip. Statistical maps were provided to the operator upon logbook issuance.

Saltwater species information collected included kept and released information for “large” Chinook (king salmon) 28” and longer and for “small” Chinook (king salmon) less than 28”. Also recorded were coho *O. kisutch*, sockeye *O. nerka*, halibut, lingcod, pelagic rockfish, yelloweye, and other nonpelagic rockfish, salmon shark *Lamna ditropis* and sablefish *Anoplopoma fimbria*.

To determine the number of businesses and guides that were “active” in the industry, a cross reference of business and guide licenses is made to the logbook check out sheet and logbook data sheets. If ADF&G received at least one logbook data page that reported targeted effort with paying clients, the charter operator turning in the form was considered an “active” bottomfish or salmon charter operator with an “active” vessel.

Freshwater Logbook

A freshwater logbook consisted of the cover page, schedule of reporting deadlines, one logbook sign out sheet to show the business to which the logbook was issued, a freshwater vessel registration page that collects the unique Alaska Vessel number (AK #) assigned by the Division of Motor Vehicles (DMV) or a United States Coast Guard (USCG) documentation number and primary drainage, a set of instructions for filling out the information on the logbook sheets, and 50 data sheets (Appendix C) to record trip information.

The following information will be recorded on the 2013 freshwater logbook data sheets:

- ADF&G guide license number for the guide leading the trip.
- Date that fishing took place.
- Specific name of river, stream or lake fished.
- Site code of site fished as referenced within a list provided with each logbook.
- Number of logbook pages used for a specific trip.
- Name of any other species kept or released.
- Crew, client, and “comped” angler’s current ADF&G sport fishing license number, and a youth angler designation for anglers under 16 years of age.
- Client residency.
- Indication if angler was a crew member or if angler was “comped.”
- A breakdown by fish species kept and released by each individual angler.

The freshwater logbook does not collect targeted species information like the saltwater logbook; it collects information on species kept and released regardless of what was targeted. A trip is counted if a logbook data page is submitted with paying client information regardless of catch. Freshwater trips are assigned to a region of the state based on the name of the site fished, each freshwater site is assigned a unique regional alpha code followed by a numeric code within the region in which it is located (Table 1).

Freshwater information collected were: kept and released numbers for king, coho, and sockeye salmon, cutthroat *O. clarkii*, rainbow and steelhead trout *O. mykiss*, lake trout *Salvelinus namaycush*, Dolly Varden *S. malma*, Arctic grayling *Thymallus arcticus*, northern pike *Esox lucius*, sheefish *Stenodus leucichthys* and a category for the number of all other fish not already listed.

Business operators are allowed to and even encouraged to pick up as many logbooks as they anticipated needing during the course of the season. The ability to acquire as many logbooks as are needed prevents them from having to make multiple trips to an ADF&G office. As a result, numerous businesses ended up getting more logbooks than were eventually used. Because of this, ADF&G differentiates between the number of logbooks issued versus the number that are actually used or activated.

Vessel Registration

Vessel registration information was collected when a saltwater or freshwater logbook was issued to a business (Appendices D1 and D2). Registration information included the DMV AK# or the U.S. Coast Guard vessel documentation number. Upon completion of vessel registration with ADF&G, each vessel was provided with two decals and year tags to indicate that the vessel is to be used in the guide industry (Appendices D3 and D4). Decals must be applied and visible on both sides of the vessel.

LOGBOOK OUTREACH, VALIDATION AND VERIFICATION

In December 2005, the Commissioner of the ADF&G issued a statement that mandated and detailed strategies for assuring the accuracy of the reporting of Pacific halibut harvest for the saltwater charter logbook through outreach and validation.

Outreach

An outreach program was initiated to reach as many operators as possible to field questions and to ensure compliance with the reporting requirements. The outreach program was conducted on-site (in the field) by ADF&G employees and off-site from the Anchorage ADF&G office.

On-site Logbook Inspections

Logbook outreach occurred in parts of the Southeast and Southcentral regions in conjunction with existing creel survey and port sampling programs. “Courtesy logbook inspections” were conducted as time allowed by ADF&G creel and port sampling technicians during their regular dockside checks of the primary fisheries from May through September. In addition, management staff continued with periodic checks of charter logbooks while in the field. Logbooks were inspected to make sure that they were filled out correctly, and staff answered any questions about how they should be filled out. These checks were not intended for enforcement or for evaluating the accuracy of data but rather as another opportunity to encourage compliance and completeness and as an indicator of how important logbook data are to ADF&G.

Off-site Logbook Review

The goal of the outreach program was to ensure compliance with all reporting requirements, by emphasizing education early in the season. Off-site outreach was conducted by the Division of Sport Fish, Research and Technical Services (RTS) staff in the Anchorage office. All logbook trip data was subject to a reporting deadline. Logbook data pages were required to be completed and returned to ADF&G on a weekly basis as specified in the instructions of both the saltwater and freshwater logbooks. Timely submission was a requirement to facilitate recall and to allow ADF&G staff to review each data page for completeness and legibility. All logbook data sheets were received by RTS in Anchorage where ADF&G data entry staff date-stamped each data page with the date received, reviewed each page for incomplete, illegible or erroneous information, and conducted phone calls to business owners and guides for follow up and clarification. Calls early in the season were intended to alleviate repeat errors in reporting which were thought to result in fewer calls being necessary later in the fishing season.

As logbook data sheets were received, RTS staff conducted reviews by monitoring all data for completion and legibility prior to data entry. In the event that some of the logbook data sheets required clarification from the operator or guide, staff would place phone calls.

Phone calls to the business owners and guides significantly improved the quality of the data, minimized reoccurring mistakes by the guide, increased compliance, and contributed to the outreach portion of this program. Logbook data entry staff contacted charter operators to resolve logbook reporting issues and to improve future reporting. These calls were intended to improve data quality and reinforce the message to the guide industry that logbook data are important and are consistently being reviewed.

Number of follow-up calls to Operators by year					
2008	2009	2010	2011	2012	2013
2,160	780	830	651	829	835

Follow up phone calls have become a valuable outreach tool and will continue to be a standard procedure in the future.

Validation

In-season Saltwater Logbook Editing

Computer routines have been written to check and validate the following saltwater data fields during the fishing season as logbook data pages are returned:

- Validate the guide license is filled in and valid.
- Validate the date is filled in and in the year 2013.
- Validate the port of landing is entered and is in the valid port site table.
- If hours are listed verify a statistical area is listed for the appropriate effort.
- Verify the statistical area listed is a valid statistical area.
- If there is harvest verify the appropriate statistical area is filled in.
- If a statistical area is filled out verify the appropriate hours field is filled in.
- Verify a statistical area is filled in (both can't be blank).
- Verify hours are filled in (both can't be blank).
- Validate possible incorrect stat areas that appear to be valid;
 - If data entry mistakenly enters the hours info in the statistical area the first statistical area that starts with the same number will be auto populated and accepted as valid.
- Check to see which log pages were turned in more than 7 days after the due date.
- Verify logbooks are checked out to a business and not a guide.
- Check all records with more than 12 hours listed.
- Check for duplicate logbook pages.
- Check trips that don't have paying angler records.
- Verify the date fished is not greater than the date the log page is received by ADF&G.

Post-season Saltwater Logbook Editing

At the end of the fishing season, computer routines check and validate the above listed items in addition to the following saltwater data fields in preparation for developing summaries (Appendix E).

- All of the in-season edits are re-run.
- Check to make sure fish kept are within the limits for the area fished.
- Validate and review excessively large numbers of released fish based on frequency distribution analysis.

In-season Freshwater Logbook Editing

Computer routines have been written to check and validate the following freshwater data fields during the fishing season as logbook data pages are returned:

- Validate the guide license number is filled in and valid.
- Validate the date is filled in and in the year 2013.
- Validate the site code is entered and is in the valid site code table.
- Check to make sure there are paying clients (not comped or crew) on the trip.
- Check to see which log pages were turned in more than 7 days after the due date.
- Check for duplicate logbook pages.
- Verify the date fished is not greater than the date the log page is received by ADF&G.
- Verify logbooks are checked out to a business and not a guide.
- Verify Kenai River trips weren't taken on Sunday or Monday in May – July.
- Check trip records that don't have angler records.

Post-season Freshwater Logbook Editing

At the end of the fishing season, computer routines check and validate the above listed items in addition to the following freshwater data fields in preparation for developing summaries:

- All of the in-season edits are re-run.
- Check to make sure fish kept are within the limits for the site fished.
- Check to make sure the fish caught are valid species for the site fished.
- Validate excessively large numbers of released fish based on frequency distribution analysis.
- Recode “Other” site codes to correct values if they exist in the site code table.
- Recode sites with “System” in the description to a more specific site code if available.
- Check records with 6 clients to verify the next page isn't part of the same trip.

Verification

Logbook data were compared to actual counts of harvested fish (verified) and to reported harvest data (unverified) from onsite interviews. These comparisons are ongoing and are part of a more comprehensive evaluation of logbook data quality (Meyer and Powers 2009).

Three unique methods will be used to conduct post-season verification of logbook data:

1. A freshwater and saltwater comparison will be made between logbook data and guided trip information collected from the Alaska Statewide Harvest Survey (e. g., Jennings et al. 2011).
2. A freshwater comparison will be made between logbook data and onsite interview data for the Situk River (Sigurdsson 2014).
3. The data collected from the logbooks was compared to the data collected in the saltwater creel programs administered through ADF&G. Saltwater creel programs include the *Assessment of Recreational Halibut and Groundfish Harvest in Southcentral Alaska* program in Homer, *Haines Marine Sport Fishery Harvest in Southeast Alaska* (Chapell 2010), and *Harvest estimates for selected marine sport fisheries in Southeast Alaska* (Wendt and Jaenicke *In prep*).

RESULTS

GUIDE AND BUSINESS LICENSING

In 2013, ADF&G received license applications from 1,178 sport fishing businesses and 2,767 sport fishing guides licensed with the intent to provide sport fishing services in Alaska. The total number of businesses and guides includes saltwater and freshwater operators. Of the 1,178 sport fishing businesses licensed in 2013, 1,056 were combination owner/guide licenses. Physical addresses of both the businesses and guides in 2013 indicated that 87% of the businesses reported Alaska residency, and 13% were from other residency strata (defined as nonresidents); 65% of the guides were residents and 35% were nonresidents.

The licensed businesses and guides were subtotaled by region of residency for Southeast, Southcentral, and Other Alaska, including the Arctic-Yukon-Kuskokwim area and nonresident. In 2013, those with a physical address in Southeast comprised 26% of the total licensed businesses, 56% were located in Southcentral, 5% had permanent addresses in other parts of Alaska, and 13% had nonresident addresses based on their license applications. In 2013, of those that licensed as guides only, 12% had permanent addresses in Southeast, 34% in Southcentral, 4% in other parts of Alaska and 50% had nonresident addresses based on their license applications (Table 2).

Table 2.—Number of licensed businesses and guides by region, 2009–2013.

Licensed Businesses ^a					
Region ^b	2009	2010	2011	2012	2013
Southeast	34	32	43	36	31
Southcentral	65	68	64	64	58
Other Alaska	2	4	2	4	3
Resident Total	101	104	109	104	92
Other U.S.	21	25	26	27	30
Foreign	0	0	0	0	0
Nonresident Total	21	25	26	27	30
Total	122	129	135	131	122
Combination Licenses ^c					
Southeast	371	351	313	288	277
Southcentral	812	764	726	656	608
Other Alaska	68	62	62	50	53
Resident Total	1,251	1,177	1,101	994	938
Other U.S.	155	146	135	138	118
Foreign	0	0	0	0	0
Nonresident Total	155	146	135	138	118
Total	1,406	1,323	1,236	1,132	1,056
Licensed Guides ^d					
Southeast	272	269	269	228	207
Southcentral	678	662	623	614	585
Other Alaska	87	78	85	72	68
Resident Total	1,037	1,009	977	914	860
Other U.S.	705	702	747	798	850
Foreign	1	0	0	0	1
Nonresident Total	706	702	747	798	851
Total	1,743	1,711	1,724	1,712	1,711

Note: Data are current as of 03/18/2014; does not include duplicate licenses.

^a Business-only licenses that do not include the owner as a guide.

^b Region assigned based on physical address indicated at time of licensing.

^c Combination licenses that include the business and the business owner as the guide.

^d Guide license only, no business license.

Based on the submission of logbook data pages with trip information in 2013, data indicated that saltwater services were provided by 573 businesses; 496 provided freshwater services. These totals include 93 businesses that provided both freshwater and saltwater services (Tables 3 and 4).

Table 3.—Number of active saltwater businesses and guides by region, 2009–2013.

Region ^c	Active Businesses ^a					Active Guides ^b				
	2009	2010	2011	2012	2013	2009	2010	2011	2012	2013
Southeast	387	373	341	324	301	738	730	673	692	702
Southcentral	416	403	345	302	273	661	633	571	539	541
Total ^d	802	776	686	621	573	1,355	1,325	1,222	1,198	1,202

Note: Data are current as of 03/18/2014.

^a Active Business counts are based on the business number listed on the sign-out sheet of a logbook (this can be a business only or a combination business/guide license) and the submission of at least one log page from the logbook.

^b Active Guide counts are based on the guide number written on each log page (this can be a guide only or a combination business/guide license) and the submission of at least one log page showing that guide license number.

^c Region is based on the port of offloading, salmon and bottomfish statistical areas.

^d Total is not additive because a business or guide could operate in both regions. Includes businesses and guides that offered both saltwater and freshwater services.

Table 4.—Number of active freshwater businesses and guides by region, 2009–2013.

Region ^c	Active Businesses ^a					Active Guides ^b				
	2009	2010	2011	2012	2013	2009	2010	2011	2012	2013
Southeast	63	69	68	62	64	143	151	159	160	161
Southcentral	476	433	431	407	389	1,087	1,042	1,045	1,011	1,034
Arctic Yukon-Kuskokwim	67	62	61	53	63	203	200	218	198	213
Total ^d	586	546	537	503	496	1,372	1,339	1,350	1,299	1,319

Note: Data are current as of 03/18/2014.

^a Active Business counts are based on the business number listed on the sign-out sheet of a logbook (this can be a business only or a combination business/guide license) and the submission of at least one log page from the logbook.

^b Active Guide counts are based on the guide number written on each log page (this can be a guide only or a combination business/guide license) and the submission of at least one log page showing that guide license number.

^c Region is based on the site code provided for the site fished on each logbook page.

^d Total is not additive because a business or guide could operate in multiple regions. Includes businesses and guides that offered both saltwater and freshwater services.

VESSELS

Saltwater

Of the 1,142 registered saltwater vessels in 2013, 973 were actually active. Based on the port of offloading, 578 saltwater vessels operated in Southeast and 396 operated in Southcentral in 2013, the lowest numbers recorded in the last five years (Table 5).

Table 5.—Number of registered and active saltwater vessels by region, 2009–2013.

Region ^a	Registered Vessels					Active Vessels				
	2009	2010	2011	2012	2013	2009	2010	2011	2012	2013
Southeast	807	778	716	690	679	670	644	610	593	578
Southcentral	638	611	543	497	464	548	528	469	416	396
Total ^b	1,445	1,389	1,259	1,185	1,142	1,217	1,172	1,079	1,005	973

Note: Data are current as of 03/18/2014.

^a Region for registered vessels is based on primary port of operation listed on the sign-out sheet; for active vessels region is based on primary port of offloading, salmon and bottomfish statistical areas.

^b Total is not be additive because a vessel could be registered or active in both regions.

Logbook data indicate that vessels will target all possible species; bottomfish, salmon and both during the course of a fishing season (Table 6).

Table 6.—Number of active saltwater vessels that made at least one trip in each target category, by region, 2009–2013.

Year	Region ^b	Target ^a			
		Salmon	Bottomfish	Both	No Stat Area
2009	Southeast	538	417	586	27
	Southcentral	270	497	403	17
	Total	808	914	989	44
2010	Southeast	514	401	567	63
	Southcentral	245	476	385	43
	Total	759	877	952	106
2011	Southeast	522	287	505	40
	Southcentral	257	419	358	38
	Total	779	706	863	78
2012	Southeast	483	330	504	43
	Southcentral	203	383	303	22
	Total	686	713	807	65
2013	Southeast	446	303	500	26
	Southcentral	215	355	304	17
	Total	661	658	804	43

Note: Data are current as of 03/18/2014.

^a Target is based on salmon and bottomfish statistical areas.

^b Region is based on the port of offloading, salmon and bottomfish statistical areas.

Freshwater

Based on the primary drainage and sites fished, many more freshwater vessels registered in Southcentral than in other regions between 2009 and 2013 (Table 7).

Table 7.—Number of registered freshwater vessels by year and region, 2009–2013.

Year	Southeast	Southcentral	Arctic-Yukon-Kuskokwim	Unknown ^a	Total ^b
2009	97	1,650	230	0	1,976
2010	96	1,615	198	3	1,911
2011	91	1,585	244	1	1,920
2012	85	1,535	236	0	1,854
2013	76	1,530	229	0	1,832

Note: Data are current as of 03/18/2014.

^a Insufficient information available during registration and on fishing activity.

^b Total may not be additive because a vessel could be registered in more than one region.

TRIPS

Saltwater

Logbook data indicate that 49,034 saltwater charter trips were conducted statewide in 2013. During the past five years, a majority of the trips that targeted salmon only, occurred in Southeast Alaska, whereas, the majority of trips that targeted bottomfish only, occurred in Southcentral Alaska. During the same five years, operators in Southeast conducted significantly more trips in which both salmon and bottomfish were targeted on the same trip. If a statistical area fished was not provided or indicated, no targeted species was assigned (Table 8).

Table 8.—Number of saltwater trips by targeted species by region, 2009–2013.

Year	Region ^b	Species Targeted ^a			No Stat Area	Total
		Salmon	Bottomfish	Both		
2009	Southeast	8,789	4,842	14,498	45	28,174
	Southcentral	2,008	12,604	5,699	21	20,332
	Total	10,797	17,446	20,197	66	48,506
2010	Southeast	7,613	5,369	14,740	99	27,821
	Southcentral	2,026	13,225	5,593	88	20,932
	Total	9,639	18,594	20,333	187	48,753
2011	Southeast	8,687	3,465	16,056	79	28,287
	Southcentral	2,057	12,091	5,987	67	20,202
	Total	10,744	15,556	22,043	146	48,489
2012	Southeast	8,276	4,785	15,234	60	28,355
	Southcentral	1,555	12,966	4,560	47	19,128
	Total	9,831	17,751	19,794	107	47,483
2013	Southeast	8,013	4,122	17,406	40	29,581
	Southcentral	1,993	12,176	5,260	24	19,453
	Total	10,006	16,298	22,666	64	49,034

Note: Data are current as of 03/18/2014.

^a Species targeted is based on the provision of salmon and/or bottomfish statistical area.

^b Region is based on the port of offloading, salmon and bottomfish statistical areas.

Freshwater

In 2013, 38,086 freshwater trips were conducted statewide, 82% of those trips took place in Southcentral, 11% in the Arctic-Yukon-Kuskokwim (AYK) area, and 7% in Southeast (Table 9).

Table 9.—Number of freshwater trips by region, 2009–2013.

Year	Southeast	Southcentral	Arctic-Yukon-Kuskokwim	Total
2009	2,400	31,303	3,851	37,554
2010	2,456	31,263	4,069	37,788
2011	2,430	33,131	4,569	40,130
2012	2,672	30,769	4,347	37,788
2013	2,811	31,032	4,243	38,086

Note: Region is based on the area code of the site code listed on each logbook page. Data are current as of 03/26/2014.

LOGBOOK TRIP EFFORT AND HARVEST

Saltwater angler days and trips continue to remain steady between 2009 to 2013 (Table 10). Freshwater trips show a similar pattern to saltwater trips; numbers remain relatively steady except for a slight increase in 2011 (Table 10).

Table 10.—Saltwater and freshwater trips and angler days by region, 2009–2013.

Year	Region	Saltwater ^a		Freshwater ^b	
		Trips	Angler Days	Trips	Angler Days
2009	Southeast	28,174	110,285	2,400	8,066
	Southcentral	20,332	119,611	31,303	94,377
	Arctic-Yukon-Kuskokwim	0	0	3,851	8,919
	Total	48,506	229,896	37,554	111,362
2010	Southeast	27,821	110,915	2,456	8,898
	Southcentral	20,932	135,170	31,263	94,894
	Arctic-Yukon-Kuskokwim	0	0	4,069	9,432
	Total	48,753	246,085	37,788	113,224
2011	Southeast	28,287	111,120	2,430	8,885
	Southcentral	20,202	135,242	33,131	99,661
	Arctic-Yukon-Kuskokwim	0	0	4,569	10,750
	Total	48,489	246,362	40,130	119,296
2012	Southeast	28,355	112,593	2,672	9,924
	Southcentral	19,128	133,293	30,769	90,450
	Arctic-Yukon-Kuskokwim	0	0	4,347	9,984
	Total	47,483	245,886	37,788	110,358
2013	Southeast	29,581	118,999	2,811	9,978
	Southcentral	19,453	138,648	31,032	91,892
	Arctic-Yukon-Kuskokwim	0	0	4,243	10,207
	Total	49,034	257,647	38,086	112,077

Note: Data are current as of 03/26/2014.

^a Saltwater region is based on the port of offloading, salmon and bottomfish statistical areas.

^b Freshwater region is based on the area code of the site code listed on each logbook page.

SALTWATER

In 2013, 82% of the saltwater logbooks that were issued were activated (effort or catch reported). Since 2006, the saltwater logbook collected individual angler information including sport fish license numbers and residency. In 2013, records show that 86% of the angler days of effort in the saltwater charter salmon fishery were conducted by nonresident anglers, compared with 9% by residents and 5% by crew members, comped anglers or those of unknown residency. In 2013, records also indicate that 79% of the angler days of effort in the saltwater charter bottomfish fishery were conducted by nonresident anglers, 14% by residents and 7% by crew fishing, comped anglers or those of unknown residency (Tables 11–12).

In 2013, of the total number of angler days fished, 66% of the salmon participation took place in Southeast, and 34% in Southcentral. In 2013 coho and king salmon made up 72% and 8% respectively of the harvest statewide, with the remaining 20% consisting of a combination of other salmon (Table 11).

Within that same period, 41% of the bottomfish participation took place in Southeast, and 59% occurred in Southcentral (Table 12).

Of the bottomfish harvested in 2013, halibut were the most harvested species at 275,736 fish, making up 53% of the total bottomfish harvest statewide. Statewide, 23% of the halibut harvest occurred in Southeast and 77% occurred in Southcentral (Table 12). It should be noted that in Southeast, IPHC area 2C, anglers fishing from a charter vessel were limited to one halibut per day, whereas in Southcentral, IPHC area 3A, guided anglers were allowed two halibut per day in 2013.

Table 11.—Saltwater salmon effort and harvest by region and angler type, 2013.

Region ^a	Type of Angler	Angler Days ^b	King salmon		Coho	Sockeye	Other Salmon
			Large ^c	Small ^c			
Southeast	Resident	1,868	770	22	3,823	5	669
	Non-Resident	99,267	24,670	923	221,540	1,226	73,490
	Comped	284	73	3	489	5	132
	Crew	1,213	4	4	2,924	44	181
	Unknown	571	75	6	785	9	485
	Total	103,203	25,592	958	229,561	1,289	74,957
Southcentral	Resident	11,656	981	284	15,350	178	1,221
	Non-Resident	35,002	3,489	1,529	48,242	1,169	5,448
	Comped	407	64	15	384	6	40
	Crew	4,795	181	137	2,903	136	357
	Unknown	210	2	15	278	0	28
	Total	52,070	4,717	1,980	67,157	1,489	7,094
Total	Resident	13,524	1,751	306	19,173	183	1,890
	Non-Resident	134,269	28,159	2,452	269,782	2,395	78,938
	Comped	691	137	18	873	11	172
	Crew	6,008	185	141	5,827	180	538
	Unknown	781	77	21	1,063	9	513
	Total	155,273	30,309	2,938	296,718	2,778	82,051

Note: Data are current as of 03/18/2014.

^a Region is based on the port of offloading, salmon and bottomfish statistical areas.

^b Angler days totals all anglers who fished on a day when a salmon statistical area was entered, plus angler days where an angler harvested a salmon when a bottomfish statistical area was provided.

^c Large king salmon are 28 inches or longer; small are under 28 inches.

Table 12.—Saltwater bottomfish effort and harvest by species, region and angler type, 2013.

Region ^a	Type of Angler	Angler Days ^b	Rockfish						
			Halibut	Lingcod	Pelagic	Yelloweye	Non-Pelagic	Sablefish	Shark
Southeast	Resident	1,752	1,199	304	1,110	265	388	19	0
	Non-Resident	86,881	61,745	6,628	86,840	10,782	26,152	7,305	3
	Comped	326	243	26	227	39	79	58	0
	Crew	1,220	98	6	570	2	6	32	0
	Unknown	278	174	22	197	31	69	9	0
	Total		90,457	63,459	6,986	88,944	11,119	26,694	7,423
Southcentral	Resident	28,978	48,563	2,449	14,783	2,396	2,021	31	0
	Non-Resident	88,175	145,211	8,260	50,558	6,425	4,475	119	4
	Comped	769	1,181	89	616	56	52	0	0
	Crew	12,040	16,659	693	4,520	680	320	4	0
	Unknown	436	663	26	193	16	29	0	0
	Total		130,398	212,277	11,517	70,670	9,573	6,897	154
Total	Resident	30,730	49,762	2,753	15,893	2,661	2,409	50	0
	Non-Resident	175,056	206,956	14,888	137,398	17,207	30,627	7,424	7
	Comped	1,095	1,424	115	843	95	131	58	0
	Crew	13,260	16,757	699	5,090	682	326	36	0
	Unknown	714	837	48	390	47	98	9	0
	Total		220,855	275,736	18,503	159,614	20,692	33,591	7,577

Note: Data are current as of 03/18/2014.

^a Region is based on the port of offloading, bottomfish and salmon statistical areas.

^b Angler days totals all anglers who fished on a day when a bottomfish statistical area was entered, plus angler days where an angler harvested a bottomfish when a salmon statistical area was provided.

FRESHWATER

In 2013, of all freshwater logbooks issued, 69% were activated. Records indicate that 9% of the freshwater participation occurred in Southeast, 82% occurred in Southcentral, and 9% took place in the Arctic-Yukon-Kuskokwim (AYK) or interior Alaska (Table 13).

Angler days of effort in 2013 indicate that 90% of the anglers in the freshwater guided fishery were nonresident anglers, 8% were residents and 2% were crew fishing, comped anglers or those of unknown residency. In Southeast, 93% of the guided/chartered fishing was conducted by nonresident anglers, 89% were nonresidents in Southcentral, and 91% of the anglers in AYK were nonresidents.

In 2013, Coho, sockeye, and king salmon were the predominant species harvested, making up 50%, 38%, and 7% respectively of the harvest statewide, with the remaining 5% consisting of a combination of other fish (Table 13).

Table 13.–Freshwater effort and harvest by species, region and angler type, 2013.

Region ^a	Type of Angler	Angler Days	Salmon			Trout				Grayling	Dolly Varden	Northern Pike	Sheefish
			King ^b	Coho	Sockeye	Cutthroat	Rainbow	Steelhead	Lake				
Southeast	Resident	367	11	361	69	1	0	0	0	0	5	0	0
	Non-Resident	9,310	23	9,031	1,621	7	5	5	0	0	79	0	0
	Comped	4	0	3	0	0	0	0	0	0	0	0	0
	Crew	228	3	201	167	0	0	0	0	0	3	0	0
	Unknown	69	0	74	10	0	0	0	0	0	4	0	0
	Total	9,978	37	9,670	1,867	8	5	5	0	0	91	0	0
Southcentral	Resident	8,097	1,024	3,694	2,523	0	25	1	1	13	149	3	0
	Non-Resident	81,808	7,004	40,096	35,914	3	422	12	49	183	1,763	496	0
	Comped	219	15	51	93	0	0	0	0	0	8	0	0
	Crew	945	26	481	495	0	5	0	0	0	12	0	0
	Unknown	823	76	340	267	0	7	0	1	1	15	0	0
	Total	91,892	8,145	44,662	39,292	3	459	13	51	197	1,947	499	0
Arctic-Yukon-Kuskokwim	Resident	501	54	59	382	0	7	0	0	1	47	37	2
	Non-Resident	9,322	194	2,553	1,401	0	477	0	4	331	407	126	47
	Comped	26	0	0	11	0	12	0	0	0	0	0	0
	Crew	270	0	10	76	0	125	0	0	9	10	13	2
	Unknown	88	2	7	46	0	7	0	0	0	0	0	0
	Total	10,207	250	2,629	1,916	0	628	0	4	341	464	176	51
Total	Resident	8,965	1,089	4,114	2,974	1	32	1	1	14	201	40	2
	Non-Resident	100,440	7,221	51,680	38,936	10	904	17	53	514	2,249	622	47
	Comped	249	15	54	104	0	12	0	0	0	8	0	0
	Crew	1,443	29	692	738	0	130	0	0	9	25	13	2
	Unknown	980	78	421	323	0	14	0	1	1	19	0	0
	Total	112,077	8,432	56,961	43,075	11	1,092	18	55	538	2,502	675	51

Note: Data are current as of 03/26/2014.

^a Region is based on the area code of the site code listed on each logbook page.

^b All king salmon harvest is included, regardless of fish size.

DISCUSSION

GUIDE AND BUSINESS LICENSING

From 2005 through 2013, the ADF&G guide and business licensing process differed from the registration process in 2004 and prior in terms of the approach used, fees, and the information collected on license applications. The current licensing approach reflects changes made in 2005 to initiate the new minimum requirements established by HB 452. Guides and businesses offering guided fishing services are now held to a higher standard of compliance than previous to 2005. Violations of the guide licensing statutes or regulations adopted under HB 452 are either violations or misdemeanors, and courts are authorized to revoke the license of the guide or business under certain conditions, such as repeated convictions within a three-year period.

ADF&G no longer collects the information collected on previous applications regarding the type (saltwater vs. freshwater) and location (regions/subareas) of services. That information is available from logbook data. The 2005-2013 licensing processes have been similar and provide a basis for establishing a long-term database of licensed businesses and guides. Charter/guide business and guide licensing still reflects the intent to operate, while actual activity is confirmed by the submission of logbook trip data.

LOGBOOKS

ADF&G initiated a mandatory saltwater charter logbook program in 1998. The BOF adopted regulations requiring annual registration of sport fishing guides and businesses, and logbook reporting. The logbook and registration/licensing program was intended to provide information on actual participation and harvest by individual vessels and businesses.

Recent emphasis from ADF&G management staff and NPFMC on more timely saltwater data spurred discussions on how to hasten logbook data availability. Up until 2010, logbook data entry involved collecting logbook sheets from the guide, entering the logbook data into a logbook database, and editing the data. This process could take RTS from six to eight weeks.

Upon further discussion and research, an alternative approach was considered. In 2009, ADF&G programmers researched the option of developing a system that would electronically scan the image of a redesigned logbook data page. Scanned images would minimize data entry time but allow for data entry personnel to fix images flagged as unrecognizable, thus maintaining data accuracy and quality. This option is not any more “burdensome” to the industry and would likely make the weekly reporting requirement more palatable knowing that the data would be more immediately available.

In 2010, the saltwater logbook data page design change incorporated the ability to use the new scanning software. Due to first year design “glitches” and software troubleshooting, the 2010 saltwater data was not available in as timely a manner as originally hoped. A program review with office assistants (data entry personnel) and discussions with the project analyst programmer resulted in adjustments to the design format and software that was implemented in 2011 and continued to be applied through 2013.

In addition to the full implementation and use of the scanning software in 2011, ADF&G worked collaboratively with National Marine Fisheries Service (NMFS) to modify the logbook requirements associated with the federal Charter Halibut Permit (CHP) program, a program that establishes limited access to the guided halibut fishery. Starting in 2011, saltwater logbooks

were designed to capture CHP numbers associated with the permits granted by NMFS to qualifying participants in the sport fish charter halibut fishery.

In July, 2011, the NOAA Fisheries proposed regulations to authorize guided angler fish (GAF) for the charter halibut fisheries in area 2C and area 3A within a catch sharing plan (CSP). ADF&G again worked with the NMFS to collect halibut kept data harvested under the proposed catch sharing plan (CSP) as Guided Angler Fish (GAF) by redesigning the logbook. Although the 2012 and 2013 saltwater logbooks were designed to capture GAF halibut, the federal GAF proposal was not in effect in 2012 and 2013; the 2014 saltwater logbook will be designed to capture GAF halibut information.

Consideration of an Electronic Reporting Option

In late 2012, staff discussions included the possibility of an electronic submission option that would provide data to ADF&G and NPFMC staff in a more timely manner. Options and discussions were further brought up during the early 2013 legislative session. Electronic reporting options were, at first, perceived as a method to fulfill both ADF&G management needs and halibut management needs for more timely information. It was agreed that any option for a logbook change would have to include a design that is appealing and easy for the guide industry to use, such that they would perceive it as beneficial to a process that they already consider “burdensome.” Further discussions, however, concluded that due to enforcement and trip recording requirements electronic reporting would still necessitate the use of a paper version of the logbook. Data would still need to be verified for errors, be entered accurately in a timely manner into a database, and be available for onsite inspection. There are currently no identified benefits to managers or the industry that would result from going “paperless”. The “paperless” approach would in addition require a change in regulation for reporting requirements, along with extensive research into the cost of electronic reporting. The discussion for going “paperless”, however, is ongoing. Electronic reporting options were further discussed during the 2013 legislative session in reference to Senate Bill 79 (SB79). SB79, a Sport Fishing Guide Services bill, entertained the feasibility and possible future requirement of electronic reporting of logbook data. As a result, division staff designed a mail-out survey to query previously licensed charter business owners to determine the extent and interest the industry has in adopting electronic reporting options (Appendix G).

In June 2013, the short three-question survey was mailed to 1,275 guided sport fish business owners, who were licensed in 2012, 41% or 526 responded to the postage paid survey. Sport fish business owners were asked if they provided freshwater, saltwater or both types of services to assist with demography. They were then asked, if provided with both options, they would prefer electronic or paper options as a reporting mechanism. Based on their response to question #2, question #3 followed with a question on which method they preferred if a paper logbook were still required at the time of landing, electronic or paper

In summary, those who provided saltwater only, or both saltwater and freshwater services, preferred using the paper version of the logbook to report their activity. Freshwater operators were split between both paper and electronic options. It was understandable that freshwater operators were split on their preference when considering the remote nature of many these businesses.

With the inability to speculate on the future of the electronic reporting design, the survey had to be designed to encompass the broadest possible scenarios including the possibility that operators may still have to maintain a paper logbook while in the field and then choose to either electronically submit the trip information or submit the paper logbook page. The final question on the survey asked the operator if he/she would choose to file electronically or by paper if a paper logbook were still required to be completed at the time of landing.

Of the 526 respondents, 61% indicated that if a paper logbook were required at the time of landing, they would prefer to submit that data page rather than translate the information into an electronic format. The suggestion that a paper logbook may still be required at the time of landing seems to diminish the enthusiasm for electronic reporting; the industry clearly felt burdened when more than one option for reporting was presented.

Survey responses were summarized in September 2013, and made available to the division director in time for the 2014 legislative session. It became clear during evaluation of the survey summary that any development of an electronic reporting program would still have to include a paper logbook option.

Verification of Logbook Harvest Data

Preliminary results from verification studies comparing the accuracy of logbook harvest data with the statewide harvest survey estimates, and onsite creel programs are favorable. Logbook data will continue to be compared to counts from these programs. Comparisons are ongoing and are part of a more comprehensive evaluation of logbook data quality. Saltwater and freshwater logbook data have also been used for a variety of regulatory analyses for state managed species. With the federal adoption of the CSP, the saltwater logbook has become the standard measurement tool used by the NPFMC for halibut management. Logbook halibut data is being used extensively.

ACKNOWLEDGEMENTS

Southeast and Southcentral regional and area staff, especially numerous front counter personnel, have been critical to the success of the ADF&G sport fishing guide and business licensing and logbook program. The above staff along with Bob Chadwick and Mike Jaenicke from Southeast, Scott Meyer, Matt Miller, and Tom Vania from Southcentral, and Tom Taube from Fairbanks have also provided valuable comments during the process of licensing and logbook form design.

Bob Clark's thoughtful insight and direction has been very much appreciated. We also acknowledge the expertise and infinite patience exhibited by Joanne MacClellan in preparing this report. Her knowledge and willingness to assist is invaluable.

Kirk Brogdon of the division's Research and Technical Services section deserves considerable credit for designing and implementing efficient information management systems for data capture, scanning, cleaning, storage, and reporting.

Kathy Kush should be acknowledged for her incredible skills in streamlining the licensing process and making sure that all license applications are processed in a timely manner that has allowed the guides and businesses to start operation without delay.

Cindy Palmatier, Diane Novinska, Raili Kedzior, and Andrea Hamby deserve credit for receiving, editing, scanning, entering, and filing the licensing and logbooks forms. Their knowledge has enhanced public relations critical to maintaining a relationship with the industry

and encouraging compliance. With their perseverance, we've continued to meet reporting deadlines that seemed nearly impossible with available staffing and workloads.

We also acknowledge the cooperation of the thousands of sport fishing guides and sport fishing businesses that licensed and completed their logbooks in a timely and compliant manner.

REFERENCES CITED

- Chapell, R. S. 2010. Production, escapement, and juvenile tagging of Chilkat River Chinook salmon in 2007. Alaska Department of Fish and Game, Fishery Data Series No. 10-86, Anchorage. <http://www.sf.adfg.state.ak.us/FedAidpdfs/FDS10-86.pdf>
- Dean, M. R. 2001. Alaska Department of Fish and Game sportfishing guide and business registration and saltwater sportfishing charter vessel logbook program, 1999. Alaska Department of Fish and Game, Special Publication No. 01-1, Anchorage. <http://www.sf.adfg.state.ak.us/FedAidPDFs/sp01-01.pdf>
- Dean, M. R., and A. L. Howe. 1999. Alaska Department of Fish and Game sportfishing guide and business registration and saltwater sportfishing charter vessel logbook program, 1998. Alaska Department of Fish and Game, Special Publication No. 99-1, Anchorage. <http://www.sf.adfg.state.ak.us/FedAidPDFs/sp99-01.pdf>
- Jennings, G. B., K. Sundet, and A. E. Bingham. 2011. Estimates of participation, catch, and harvest in Alaska sport fisheries during 2010. Alaska Department of Fish and Game, Fishery Data Series No. 11-60, Anchorage. <http://www.adfg.alaska.gov/FedAidpdfs/FDS11-60>
- Meyer, S. and R. Powers. 2009. Evaluation of Alaska charter logbook data for 2006-2008. Discussion paper for the North Pacific Fishery Management Council, September 21, 2009. Alaska Department of Fish and Game, Anchorage. <http://www.npfmc.org/wp-content/PDFdocuments/halibut/logbookeval909.pdf>
- Sigurdsson, D. 2014. Alaska Department of Fish and Game statewide freshwater guided sport fishing logbook reporting program, 2014-2016. Alaska Department of Fish and Game, Division of Sport Fish, Regional Operational Plan ROP.SF.4A.2014.02, Anchorage.
- Sigurdsson, D., and B. Powers. 2013. Participation, effort, and harvest in the sport fish business/guide licensing and logbook programs, 2012. Alaska Department of Fish and Game, Fishery Data Series No. 13-37, Anchorage. <http://www.adfg.alaska.gov/FedAidPDFs/FDS13-37.pdf>
- Sigurdsson, D., and B. Powers. 2012. Participation, effort, and harvest in the sport fish business/guide licensing and logbook reporting programs, 2011. Alaska Department of Fish and Game, Fishery Data Series No. 12-27, Anchorage. <http://www.adfg.alaska.gov/FedAidPDFs/FDS12-27.pdf>
- Sigurdsson, D., and B. Powers. 2011. Participation, effort, and harvest in the sport fish business/guide licensing and logbook reporting programs, 2010. Alaska Department of Fish and Game, Fishery Data Series No. 11-31, Anchorage. <http://www.sf.adfg.state.ak.us/FedAidPDFs/FDS11-31.pdf>
- Sigurdsson, D., and B. Powers. 2010. Participation, effort, and harvest in the sport fish business/guide licensing and logbook reporting programs, 2009. Alaska Department of Fish and Game, Fishery Data Series No. 10-65, Anchorage. <http://www.sf.adfg.state.ak.us/FedAidPDFs/FDS10-65.pdf>
- Sigurdsson, D., and B. Powers. 2009. Participation, effort, and harvest in the sport fish business/guide licensing and logbook reporting programs, 2006-2008. Alaska Department of Fish and Game, Special Publication No. 09-11, Anchorage. <http://www.sf.adfg.state.ak.us/FedAidPDFs/SP09-11.pdf>
- Wendt, K. L., and M. J. Jaenicke. *In prep.* Harvest estimates for selected marine sport fisheries in Southeast Alaska during 2010. Alaska Department of Fish and Game, Fishery Data Series, Anchorage.

**APPENDIX A.
SPORT FISH BUSINESS OWNER/GUIDE LICENSE
APPLICATION**



2013 SPORT FISH BUSINESS OWNER/ GUIDE LICENSE APPLICATION

Alaska Department of Fish and Game / Division of Sport Fish - RTS
333 Raspberry Road, Anchorage, Alaska 99518-1565
Telephone: (907)267-2369 or (907)267-2390
<http://www.adfg.alaska.gov/index.cfm?adfg=prolicenses.sportfishguides>

License #

This TEMPORARY LICENSE is good for 21 business days from date signed by ADFG Representative

<p>FEES CHECK ONE: <u>All fees are nonrefundable</u></p> <p><input type="checkbox"/> \$50.00 Guide Only License</p> <p><input type="checkbox"/> \$100.00 Business Only License</p> <p><input type="checkbox"/> \$100.00 Combined Business/Guide License* <small>*An agent for this business cannot apply as a guide on a combination license</small></p> <p><input type="checkbox"/> \$50.00 Guide Only Upgrade to Combination Business/Guide License</p>	<p>METHOD OF PAYMENT:</p> <p><input type="checkbox"/> Check # : _____ <small>Make checks payable to "State of Alaska"</small></p> <p><input type="checkbox"/> Money Order # : _____</p> <p><input type="checkbox"/> Cash (Anchorage, Juneau, Fairbanks offices <u>ONLY</u>)</p> <p><input type="checkbox"/> Credit Card (Anchorage, Juneau, Fairbanks offices <u>ONLY</u>)</p>	<p><i>APPLICATION MUST BE STAMPED BY ADF&G TO BE VALID</i></p>
--	---	--

INSTRUCTIONS TO COMPLETE FORM ON REVERSE

SECTION A: ALL APPLICANTS COMPLETE THIS SECTION

Name of Business Owner or Guide: _____
Last First MI

Permanent Mailing Address : _____
PO Box or Street Address City State Zip

Telephone Number: (____) _____ In season Telephone Number: (____) _____

Mail License Here: _____
(if different than above) PO Box or Street Address City State Zip

SECTION B: TO BE FILLED OUT BY THE BUSINESS OWNER OR THEIR AGENT

BUSINESS INFORMATION:

Name of Business: _____

Name of Business Owner: _____

State of Alaska Business License Number: _____ Expiration Date: Mo/Date/Yr

INSURANCE: *See detailed insurance requirements on back.*

Name of Insurance Company: _____

Policy/Binder #: _____ Effective Dates: From: _____ To: _____

Remember to get a logbook for your business at the nearest ADF&G office prior to commencement of guiding activities!

SECTION C: TO BE FILLED OUT BY GUIDE OR THEIR AGENT

Are you a citizen of the United States, Canada, Mexico or a resident alien? Yes No

Basic First Aid Information: Certifying agency: _____ Exp. Date: Mo / Yr

2013 Alaska Sport Fishing License # : _____ Date of Birth: Mo/Date/Yr

U.S. COAST GUARD OPERATOR'S LICENSE: *(See explanation on back)*

Do you plan to operate a motorized vessel in Navigable Waters? Yes No **If yes, complete the next line.**

U.S.C.G. License # or Merchant Mariner Credential Doc #: _____ Exp.Date: Mo/Date/Yr

SIGNATURE OF BUSINESS OWNER/AGENT or GUIDE:

I hereby certify that all information is true and correct and that I understand this information is subject to public disclosure. (NOTE: Making a false statement or omitting a material fact, is subject to a maximum penalty of \$10,000 or 1 year imprisonment, or both, per AS 11.56.210.)

X _____ Circle one: Applicant or Agent Date: _____

This temporary license must be signed and stamped by an ADF&G employee and in your possession before guiding activities begin.

Name of ADF&G Representative (print): _____ Date: _____

Signature: _____ Place of Issue: _____

Bottom Copy To Applicant



INSTRUCTIONS FOR THE 2013 SPORT FISH BUSINESS OWNER/GUIDE LICENSE APPLICATION

Attention: *The following will apply without exception:*

1. All applicable sections of the license application must be complete and legible prior to ADF&G validation. No “pending”, “unknowns,” or blanks will be accepted.
2. Incomplete license applications will be returned resulting in a processing delay.
3. A signature is required.
4. This is a license application only. A post card sized annual license will be mailed within 21 business days.
5. There may be requirements by other state and federal agencies to operate as a guide in Alaska.

INSTRUCTIONS:

<p>SECTION A: <u>ALL</u> applicants must complete this section.</p>
<p>SECTION B: BUSINESS OWNER OR THEIR AGENT: Complete this section if you are the owner/agent of the sport fishing business. This section should be filled out even if the owner does not intend to personally guide clients. An agent for this business CANNOT apply as a guide on the same application. A separate license application must be submitted.</p> <p>LIABILITY INSURANCE REQUIREMENT: General liability or marine protection that covers at least \$100,000 for each incident and \$300,000 for all incidents in a year. Insurance must cover ALL periods of time when the owner or owner’s employees are providing sport fishing services to clients. Insurance must be current, NOT pending.</p>
<p>IMPORTANT NOTICE TO BUSINESS OWNERS</p>
<p>State regulation (5 AAC 75.075) requires that all operators providing sport fishing guide services in Alaska must apply annually for a license with the Department of Fish and Game before guiding services begin. Business owners are required to register all charter vessels with ADF&G and acquire a logbook prior to commencement of guiding activities. <i>Guides hired by an operator must be provided with a copy of the ADF&G business license to have in their possession while guiding.</i></p>
<p>SECTION C: GUIDES: Complete this section if you intend to guide for a sport fish operation owned by someone other than you or if you are the business owner who also intends to guide (owner/operator).</p> <p>U.S. COAST GUARD OPERATOR’S LICENSE: A licensed sport fish guide must have, at minimum, a Limited OUPV for Western Waters in Alaska or 6-pak U.S.C.G. operator’s license in their possession while operating a motorized vessel with clients or transporting clients in a motorized vessel on navigable waters. Navigable waters are determined by the U.S. Coast Guard (907) 271-6700.</p> <p>Note: Effective April 20, 2009 the U.S.C.G. began issuing the Merchant Mariner Credentials (MMC). Applicants must provide their U.S.C.G. license number, expiration date and date of birth (DOB).</p>
<p>IMPORTANT NOTICE TO GUIDES</p>
<p>State regulation (5 AAC 75.075) requires that all licensed guides providing sport fishing guide services in Alaska must apply annually for a license with the Department of Fish and Game before guiding activities begin.</p>
<p style="text-align: center;">WHAT A GUIDE MUST HAVE IN POSSESSION WHILE GUIDING</p> <p>A sport fish business owner or guide should be able to present all documents required for licensing upon request by a representative of the department of fish and game, or any peace officer of the state. While engaged in providing sport fishing guide services, a sport fishing guide shall have the following readily available for inspection:</p> <ul style="list-style-type: none"> • A current sport fishing guide license; • A copy of the current ADF&G sport fishing business license of the guide’s employer; • A current Alaska sport fishing license, tags, stamps or permits that are required to engage in the sport fishery for which the guide services are providing; • An identification card issued to the sport fishing guide by a state or federal agency that bears a photo of the sport fishing guide.

APPENDIX B.
SALTWATER LOGBOOK FORM



State of Alaska

Department of Fish & Game

Division of Sport Fish

2013 Saltwater Charter Logbook and Vessel Registration

Vessel

Name: _____

Vessel AK. No.

or

U.S.C.G. No.: _____

ALL CHARTER TRIP ACTIVITY CONDUCTED FROM THIS VESSEL MUST BE RECORDED WITHIN THE LOGBOOK ASSIGNED TO THIS VESSEL

Federal rules require that the Charter Halibut Permit (CHP) number(s) be recorded on the logbook before the beginning of any trip during which halibut are caught and retained.

CHP No:

CHP HOLDER:

Please follow the INSTRUCTIONS carefully as they have changed

LOGBOOK INSPECTION

This logbook must be presented for inspection, upon request, to any representative of the Department of Fish and Game, peace officer of the state, or law enforcement representative of the National Marine Fisheries Service.



Alaska Department of Fish & Game

2013 Saltwater Sport Fishing Charter Trip Logbook Page

RETURN TO: 333 RASPBERRY ROAD, ANCHORAGE, ALASKA 99518-1565 • QUESTIONS: CALL (907) 267- 2369

130000-01

LOGBOOK PAGE

TRIP INFORMATION

➔ Complete this section for every trip. Continue on additional pages for trips with more than six anglers in the same trip.

➔ DATE FISHED: _____ / _____ 2013 AM PM
Month Day Hour Trip Ended

➔ 2013 GUIDE LICENSE NUMBER: _____
(assigned to you by ADF&G)

➔ CHARTER HALIBUT PERMIT (CHP) NUMBER: _____
(assigned to you by NOAA)

Check box if more than one CHP is used on this trip:

FOR OFFICE USE ONLY

Total Anglers

➔ TARGETED SPECIES / LOCATION FISHED:
(where most fish species were caught)

Salmon: _____
Primary Statistical Area Hours Fished

Bottomfish: _____
Primary Statistical Area Hours Fished

➔ COMMUNITY OR PORT WHERE TRIP ENDED:
(where fish or clients were off-loaded from vessel)

➔ GUIDED ANGLER FISH (GAF) NUMBER:
(assigned to you by NOAA)

INDIVIDUAL ANGLER AND CATCH INFORMATION

Complete one row below for each angler who fished this trip. Record sport fishing license number, printed name AND Alaska residency status for all anglers. Write "YOUTH" in license number field for anglers under 16.

	AK Resident	Non - Resident	Comped	Crew	K>	SALMON					BOTTOMFISH							
						Kept / Released	King (28" & larger)	King (under 28")	Coho	Sockeye	Other Salmon	Halibut	GAF Halibut	Lingcod	Pelagic Rockfish	Yelloweye Rockfish	Non-pelagic Rockfish (except Yelloweye)	Sablefish (Black Cod)
1. _____ License Number	<input type="radio"/>	<input type="radio"/>	<input type="radio"/>	<input type="radio"/>	<input type="radio"/>	<input type="checkbox"/>	<input type="checkbox"/>	<input type="checkbox"/>	<input type="checkbox"/>	<input type="checkbox"/>	<input type="checkbox"/>	<input type="checkbox"/>	<input type="checkbox"/>	<input type="checkbox"/>	<input type="checkbox"/>	<input type="checkbox"/>	<input type="checkbox"/>	<input type="checkbox"/>
_____ First Name / Last Name						<input type="checkbox"/>	<input type="checkbox"/>			<input type="checkbox"/>		<input type="checkbox"/>	<input type="checkbox"/>	<input type="checkbox"/>	<input type="checkbox"/>	<input type="checkbox"/>	<input type="checkbox"/>	<input type="checkbox"/>
_____ Signature																		

Form 11-540 (01-2013)

CERTIFICATION: I certify that the information provided herein is accurate and true. Falsification or omission of information on this form is punishable under AS 11.66.210(a) and 5 AAC 76.076.

X _____ GUIDE SIGNATURE PAGE _____ OF _____

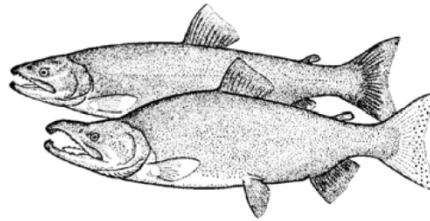
**APPENDIX C.
FRESHWATER LOGBOOK FORMS**

2013 Freshwater Sport Fish Guide Logbook and Vessel Registration

LOGBOOK NO.

BUSINESS NAME

ADF&G BUSINESS OWNER'S LICENSE NO.



*Please follow the instructions carefully
as they have changed.*



**State of Alaska Department of Fish & Game
Division of Sport Fish**

LOGBOOK INSPECTION

*Upon request from any representative
of the Department or any peace officer of the state,
a person is required to present this Alaska Department
of Fish and Game Freshwater Sport Fishing
Guide Logbook for inspection.*

-continued-



Alaska Department of Fish & Game
2013 Freshwater Sport Fish Trip Logbook
 RETURN TO: 333 RASPBERRY ROAD, ANCHORAGE, AK 99518-1565 • QUESTIONS: (907) 267-2369

LOGBOOK NO. _____

TRIP INFORMATION	Angler Residency		Sport Fish License Number of each Client, Nonpaying angler, and Crew THAT FISHED AND Record all those anglers under 16 as "Youth Angler" (YA1, YA2etc.)	Circle One if applicable		SALMON			TROUT			OTHER					
	Resident	Non-Resident		Comped Crew	KEPT	RELEASED	KING	COHO	SOCKEYE	CUTTHROAT	RAINBOW	STEELHEAD	LAKE TROUT	DOLLY VARDEN/ARCTIC CHARR	ARCTIC GRAYLING	NORTHERN PIKE	SHEEFISH *
	<i>R</i>	<i>N</i>		<i>X</i>	<i>C</i>	<i>K</i>	<i>R</i>										
2013 ADF&G GUIDE LICENSE #: _____																	
DATE FISHED: _____, 2013 (Month) (Day)																	
RIVER / STREAM / LAKE (SPECIFY) _____	<i>R</i>	<i>N</i>		<i>X</i>	<i>C</i>	<i>K</i>					KEPT						
						<i>R</i>					RELEASED						
	<i>R</i>	<i>N</i>		<i>X</i>	<i>C</i>	<i>K</i>					KEPT						
						<i>R</i>					RELEASED						
SITE CODE (REFER TO SITE CODE LIST) _____	<i>R</i>	<i>N</i>		<i>X</i>	<i>C</i>	<i>K</i>					KEPT						
						<i>R</i>					RELEASED						
PAGE NO. _____ OF _____																	
TOTAL NO. OF PAGES FOR THIS TRIP ↑	<i>R</i>	<i>N</i>		<i>X</i>	<i>C</i>	<i>K</i>					KEPT						
						<i>R</i>					RELEASED						
* WRITE IN OTHER SPECIES HERE	<i>R</i>	<i>N</i>		<i>X</i>	<i>C</i>	<i>K</i>					KEPT						
						<i>R</i>					RELEASED						

CERTIFICATION: I certify that the information provided herein is accurate and true. Falsification or omission of information on this form is punishable under AS 11.56.210(a) and 5 AAC 75.076.

X

GUIDE SIGNATURE

CONTINUE ON NEXT PAGE IF MORE THAN 6 ANGLERS. CHECK IF TRIP INFORMATION IS CONTINUED ON NEXT PAGE:

APPENDIX D.
VESSEL REGISTRATION FORMS, DECALS AND TAGS



INSTRUCTIONS FOR ADF&G REPRESENTATIVE:

Please forward the **white** copy of this form to: **Sport Fish RTS, 333 Raspberry Rd., Anchorage, AK 99518-1565.**

DO NOT REMOVE THE PINK COPY. THE PINK COPY MUST STAY IN THE LOGBOOK.

DO NOT ISSUE A LOGBOOK UNLESS THE APPLICANT HAS THE FOLLOWING:

- ⇒ 2013 ADF&G Sport Fish Business License
- ⇒ Current AK Vessel No. issued by DMV or Current U.S.C.G. Vessel Documentation No.

NONE OF THE ABOVE CAN BE "PENDING"

2013 ADF&G Sport Fish Business Owner and Guide License applications are available at all ADF&G offices or online at: <http://www.adfg.alaska.gov/index.cfm?adfg=prolicenses.forms>

AK Vessel Registration information is available from Alaska Division of Motor Vehicles at (907) 269-5551 or online at: <http://www.doa.alaska.gov/dmv/reg/boat.htm>

2013 Saltwater Sport Fish Charter Logbook Sign-Out AND Vessel Registration
Must be completed

SPORT FISH BUSINESS INFORMATION:

Name of Sport Fishing Business: _____

ADF&G Sport Fish Business License No.: **2013-** _____

SPORT FISHING CHARTER VESSEL REGISTRATION:

⇒ DMV issued AK No. or U.S.C.G. Vessel Documentation No.: _____
(A logbook WILL NOT be issued without a current AK or U.S.C.G. No.)

⇒ Vessel Name: _____
(Vessel Name and AK No. or U.S.C.G. No. must appear on the cover)

⇒ Primary Alaska Saltwater port from which this vessel will operate during 2013:

DEPARTMENT USE ONLY

⇒ **Did you issue a Stat. Area Map?** YES NO If No, Explain:

⇒ **ADF&G Representative:** *(print)* _____

⇒ **Area Office:** _____ **Date of Issue:** _____

LOGBOOK NO.

2013 FRESHWATER SPORT FISH

Logbook Sign-Out

SPORT FISH BUSINESS INFORMATION

Must have a current ADF&G Business License Number

NAME OF PERSON TO WHOM THIS LOGBOOK WAS ISSUED

SPORT FISHING BUSINESS NAME

ADF&G LICENSE NUMBER OF BUSINESS (NOT A "GUIDE ONLY" LICENSE)

CONTACT PHONE NUMBER



Do you plan to use a vessel while providing sport fishing guided services in freshwater?

No Yes (If yes, list vessels on pg. iii)

INSTRUCTIONS TO ADF&G REPRESENTATIVE

Please forward the white copy of this form to:

**Sport Fish Research & Technical Services
333 Raspberry Rd., Anchorage, AK 99518**

ADF&G area offices **will** keep the pink copy on file.

Do NOT issue a logbook unless the applicant has the following:

- 2013 ADF&G Business License;
- Current AK Boat Number issued by DMV OR current U.S.C.G. Vessel Documentation number, if applicable.

None of the required information can be "pending." This form must be complete and accurate to the best of your knowledge.

Incomplete forms will be returned to you for follow-up and completion, resulting in a processing delay.

DID YOU PROVIDE A SITE CODE LIST ?

ADF&G REPRESENTATIVE (PRINT)

AREA OFFICE

DATE OF ISSUE

Appendix D3.–Vessel decal, 2013.



Appendix D4.–Vessel tab, 2013.



**APPENDIX E.
SALTWATER EDITING RESULTS**

Appendix E1.–Saltwater editing results, 2013.

Edit	Number of Occurrences
No guide license number	11
Invalid guide license number	1
Missing date	0
Invalid date (not in correct year)	0
Invalid port of offloading	3
Invalid port of origin	N/A
Missing salmon statistical area	14
Missing bottomfish statistical area	21
Invalid salmon statistical area	1
Invalid bottomfish statistical area	1
Salmon harvest no salmon statistical area	918
Bottomfish harvest no bottomfish statistical area	1,704
Salmon statistical area listed, no hours listed	460
Bottomfish statistical area listed, no hours listed	602
No statistical area listed	66
No hours listed	49
Possible invalid salmon statistical area	0
Possible invalid bottomfish statistical area	0
Log pages turned in late ^a	2,726
Log book wasn't checked out to a business	0
Salmon or bottomfish hours are greater than 12	57
Duplicate log pages	0
Trip records without any angler records	0
Date fished greater than date received by ADF&G	4
Trips	49,034

^a Late includes an additional 7 day grace period.

**APPENDIX F.
FRESHWATER EDITING RESULTS**

Appendix F1.–Freshwater editing results, 2013.

Edit	Number of Occurrences
No guide license number	0
Invalid guide license number	0
Missing date	0
Invalid date (not in correct year)	0
Missing site code	0
Invalid site code	0
No paying clients	0
Log pages turned in late ^a	5,554
Duplicate log pages	0
Date fished greater than date received by ADF&G	38
Log book wasn't checked out to a business	0
Kenai River trips on Sunday or Monday	264
Trip records without any angler records	0
Trips	38,085

^a Late includes an additional 7 day grace period.

APPENDIX G
ELECTRONIC REPORTING SURVEY

Appendix G1.–Electronic logbook reporting mail-in survey, 2013.

Alaska Dept. of Fish and Game
Sport Fish RTS - Logbook Survey
333 Raspberry Rd.
Anchorage, AK 99518-1599

ANGLER ADDRESS



2013 ELECTRONIC LOGBOOK REPORTING SURVEY

Alaska Department of Fish and Game, Division of Sport Fish
333 Raspberry Rd, Anchorage Alaska 99518

1. What type of Sport Fish Charter/Guide services do you provide?
(Please check one)
Saltwater Freshwater Both
2. If electronic reporting of charter trip information was available as an option to paper logbooks, which reporting mechanism would you prefer to use?
(Please check one)
Electronic Reporting Paper Logbook
3. If you were still required to complete a paper logbook at the time of landing, but could choose to either submit the paper logbook sheet or file an electronic report, which would you choose to do most often?
(Please check one)
File electronic report Submit paper logbook sheet

Please Return Survey by September 15, 2013

Dear Charter/Guide Business Owner,

During the 2013 legislative session, there was a discussion in reference to SB79, the Sport Fishing Guide Services bill, with regard to the feasibility and possible requirement of electronic reporting of logbook data.

With this brief survey, the Alaska Dept. of Fish and Game, Division of Sport Fish is asking the guide industry for feedback on an electronic logbook option.

At this time, it is too early to speculate on the electronic reporting design, confidentiality of data or how it might affect the requirement for a paper version of the logbook. Those issues will be discussed in greater detail at a later date. We recognize that some businesses and guides will be unable to take advantage of electronic reporting due to location or aspects of their business model.

The Alaska Department of Fish and Game, Division of Sport Fish appreciates the time you'll take to fill out this short survey. Additional comments can be e-mailed to: dfg.dsf.guides@alaska.gov

Tear Here



NO POSTAGE
NECESSARY
IF MAILED
IN THE
UNITED STATES



BUSINESS REPLY MAIL
FIRST-CLASS MAIL PERMIT NO. 92 ANCHORAGE AK
POSTAGE WILL BE PAID BY ADDRESSEE

ALASKA DEPARTMENT OF FISH AND GAME
SPORT FISH RTS-E-LOGBOOK SURVEY
333 RASPBERRY RD
ANCHORAGE AK 99518-9960



**APPENDIX H.
FRESHWATER LOGBOOK SUMMARIES BY AREA AND
SITE**

Appendix H1.—Freshwater logbook participation by area and site, Southeast Alaska, 2013.

Area	Site	Businesses ^a	Guides ^a	Trips	Angler Days					Total
					Resident	Non-Res	Comped	Unknown	Crew	
A	Lakes and streams	4	7	120	0	290	0	4	0	294
B	Staney Creek	4	7	50	3	106	0	0	0	109
B	Thorne River and Lake	5	9	45	3	93	0	2	0	98
B	Other lakes and streams	10	14	57	0	104	0	0	0	104
C	Kupreanof Island streams	4	5	21	0	74	0	0	1	75
C	Other streams	9	12	72	1	199	0	0	3	203
D	Baranof Island streams and lakes	9	29	154	16	492	0	18	1	527
D	Chichagof Island streams and lakes	9	17	35	1	143	0	0	2	146
D	Eva Lake and Stream (Baranof Island)	9	14	48	1	173	0	1	0	175
D	Fish Bay streams (Baranof Island)	5	5	11	0	37	0	0	0	37
D	Gut Bay Creek (Baranof Island)	4	7	17	5	50	0	0	3	58
D	Nakwasina Sound streams (Baranof Island)	4	10	59	1	212	0	0	0	213
D	Plotnikof system stream and lake (Baranof Island)	6	6	14	0	48	0	3	0	51
D	Politofski Creek (Baranof Island)	5	5	11	2	32	0	0	0	34
D	Rezanof system stream and lakes (Baranof Island)	4	4	8	1	20	0	0	0	21
D	Salmon Creek (Baranof Island)	5	7	31	4	71	0	0	0	75
D	Sitkoh Creek and Lake (Chichagof Island)	8	10	50	1	158	0	0	0	159
D	Other lakes and streams	7	12	38	2	134	0	1	5	142
E	Admiralty Island streams (Admiralty Island)	5	21	113	2	510	0	3	1	516
E	Other lakes	4	8	28	0	102	0	1	0	103
E	Other streams	5	19	241	3	1,138	1	3	0	1,145
G	Mud Bay Creek (Chichagof Island)	4	6	11	0	43	0	0	0	43
G	North Chichagof Island streams	4	7	72	2	341	0	0	2	345
G	Trail River (Chichagof Island)	4	5	17	1	98	0	2	18	119
H	Situk River (below weir)	7	12	66	8	143	0	0	40	191
H	Situk River (above weir)	7	20	496	136	1,035	0	3	74	1,248
H	Tsiu River	5	25	535	70	1,944	2	20	43	2,079
H	Other lakes and streams	12	24	366	104	1,447	1	8	35	1,595
	Other lakes and streams in Southeast	4	7	25	0	73	0	0	0	73
Total Southeast		64	161	2,811	367	9,310	4	69	228	9,978

Note: Responses with less than 4 businesses are not reported separately, to protect confidentiality of respondents. Data are current as of 03/26/2014.

^a Regional and statewide business and guide totals aren't additive because a business and/or guide can operate in multiple sites and areas.

Appendix H2.—Freshwater logbook participation by area and site, Southcentral Alaska, 2013.

Area	Site	Businesses ^a	Guides ^a	Trips	Angler Days					Total
					Resident	Non-Res	Comped	Unknown	Crew	
J	East Prince William Sound lakes and streams	6	13	97	30	566	0	0	6	602
J	Other lakes and streams	7	7	20	5	71	1	0	6	83
K	Lakes and streams	5	6	209	255	504	4	4	37	804
M	Chulitna/East Susitna drainage lakes	4	4	5	0	14	0	0	0	14
M	Deshka River (Kroto Creek) below weir	11	17	296	318	762	0	19	13	1,112
M	Fish Creek (into Talkeetna)	4	7	24	3	97	0	3	1	104
M	Fish Lake Creek and Fish Lakes (Yentna drainage)	4	15	24	0	67	0	0	0	67
M	Lake Creek	15	50	993	111	2,633	9	33	26	2,812
M	Little Willow Creek	5	5	37	33	100	0	0	20	153
M	Talachulitna River	10	16	241	5	652	1	0	52	710
M	Talkeetna River	6	23	288	98	1,037	6	57	0	1,198
M	Willow Creek	4	4	10	3	9	0	0	1	13
M	Yentna River drainage (remainder)	16	35	273	48	840	3	1	56	948
M	Other Chulitna/East Susitna drainage streams	8	10	22	8	40	0	0	0	48
M	Other West Susitna drainage lakes and streams	9	13	69	4	220	0	4	0	228
N	Bachatna Creek	7	7	19	7	72	0	1	0	80
N	Big River	7	9	43	8	137	0	2	6	153
N	Big River Lakes	25	37	821	155	2,996	0	28	29	3,208
N	Chuitna River	8	8	20	12	78	0	0	0	90
N	Coal Creek (into Beluga Lake)	4	4	10	3	24	0	0	0	27
N	Crescent Lake	15	29	263	83	763	0	4	18	868
N	Crescent River (Grecian River)	7	7	49	29	148	0	3	2	182
N	Kamishak River	8	32	132	8	330	0	5	14	357
N	Kustatan River	28	41	297	44	1,210	0	24	12	1,290
N	Sites south of North Forelands	12	18	40	4	119	0	3	0	126
N	Wolverine Creek mouth (by Big River Lakes)	14	26	413	46	1,484	0	24	15	1,569
N	Other lakes and streams	5	5	27	0	103	0	0	1	104
P	Afonasi Lake	4	4	4	0	14	0	0	0	14
P	Anchor River	7	8	40	9	71	0	0	1	81
P	Bench Lake (Johnson Trail)	5	5	11	1	27	0	0	0	28
P	Deep Creek	6	8	42	5	130	2	0	5	142

-continued-

Area	Site	Businesses ^a	Guides ^a	Trips	Angler Days					Total
					Resident	Non-Res	Comped	Unknown	Crew	
P	Kasilof River - below Highway	74	127	1,933	599	5,683	27	29	18	6,356
P	Kasilof River - above Highway	22	35	155	40	460	3	3	4	510
P	Kasilof River - guided, reach not specified	7	8	11	1	28	0	1	0	30
P	Kenai River - Cook Inlet to Soldotna Bridge	127	193	3,654	1,522	11,044	53	83	39	12,741
P	Kenai River - Soldotna Bridge to Moose R	61	85	699	130	2,122	1	9	8	2,270
P	Kenai River - Moose River to Skilak outlet	97	152	2,085	1,030	5,652	15	34	28	6,759
P	Kenai River - Skilak Inlet to Kenai Lake	45	93	2,567	989	6,739	27	101	36	7,892
P	Kenai River - guided, reach not specified	18	23	91	18	252	0	3	3	276
P	Quartz Creek	9	13	43	6	100	0	2	1	109
P	Russian River	14	24	186	37	389	2	1	6	435
P	Other lakes	10	13	34	2	101	0	2	2	107
P	Other streams	6	7	50	11	173	2	0	10	196
Q	Afognak River (Litnik Stream)	4	4	20	4	76	0	0	7	87
Q	American River	5	6	25	4	55	0	0	3	62
Q	Ayakulik River - above weir	4	8	115	2	405	0	1	0	408
Q	Browns Lagoon River	4	6	13	1	49	0	1	6	57
Q	Dog Salmon Creek (Frazer River)	6	12	75	4	296	1	0	10	311
Q	Karluk lake and river above weir	7	14	86	8	465	0	0	14	487
Q	Olds River	5	5	26	1	58	1	0	3	63
Q	Pasagshak River	5	6	12	0	38	1	0	1	40
Q	Saltery Creek	5	17	214	61	754	4	10	45	874
Q	Other remote lakes	6	7	15	11	43	0	0	1	55
Q	Other remote streams	19	36	317	61	1,042	1	8	56	1,168
Q	Roadside lakes	5	6	22	1	60	0	1	0	62
Q	Other Roadside streams	6	8	28	4	67	5	0	7	83
R	American Creek	16	43	336	38	809	0	1	1	849
R	Becharof system	11	33	103	10	235	0	5	1	251
R	Big Creek (into Naknek)	6	15	53	2	118	0	0	0	120
R	Brooks River (into Naknek Lake)	19	81	419	57	971	5	9	4	1,046
R	Contact Creek	10	27	79	7	207	0	0	0	214
R	Egegik River (Becharof system)	9	27	154	13	583	0	8	2	606

-continued-

Area	Site	Businesses ^a	Guides ^a	Trips	Angler Days					Total
					Resident	Non-Res	Comped	Unknown	Crew	
R	Naknek Lake	4	9	18	3	43	0	0	0	46
R	Naknek River (dwnstream frm Rapids Camp incl trib)	12	46	446	80	951	11	21	3	1,066
R	Naknek River (Rapids Camp upstream to Naknek Lk,incl trib)	14	54	843	79	1,800	1	18	7	1,905
R	Naknek River and Tributaries	16	58	491	225	1,004	1	20	4	1,254
R	Swikshak River	5	12	31	5	109	0	0	3	117
R	Ugashik system	12	35	127	3	298	0	2	7	310
R	Other streams	19	54	859	58	2,072	0	2	2	2,134
S	Alagnak (Branch) River	18	79	1,349	37	2,692	2	48	25	2,804
S	Battle River	14	37	104	6	267	2	2	36	313
S	Chekok Creek	4	7	20	0	51	0	0	0	51
S	Copper River (Lake Iliamna area)	13	51	554	89	1,251	0	3	7	1,350
S	Funnel Creek	5	9	15	1	30	0	0	0	31
S	Gibraltar River	7	27	125	20	273	0	1	0	294
S	Iliamna River	6	21	201	0	471	2	1	4	478
S	Kijik River	6	11	18	0	65	0	0	5	70
S	Kukaklek River (Big Ku) (into Alagnak)	11	27	76	5	152	0	3	3	163
S	Kulik River	14	58	359	46	882	0	6	0	934
S	Kvichak River	17	58	446	46	937	0	7	3	993
S	Lake Clark	8	10	52	6	144	0	1	1	152
S	Lake Iliamna	5	11	43	1	112	0	0	0	113
S	Lower Talarik Creek	5	15	41	7	108	0	1	0	116
S	Moraine Creek	17	78	459	13	1,037	1	6	0	1,057
S	Nanuktuk Creek	12	28	104	8	198	0	1	0	207
S	Newhalen River	6	14	60	6	186	0	2	0	194
S	Nonvianuk River (into Alagnak)	7	11	28	2	54	0	3	7	66
S	Tazimina River	7	24	144	5	330	0	1	0	336
S	Upper Talarik Creek	5	12	20	5	48	0	1	1	55
T	Agulowak River	7	42	714	238	1,078	3	8	0	1,327
T	Agulukpak River	9	47	243	33	427	1	4	2	467
T	Aleknagik Lake	5	16	106	0	206	0	0	1	207
T	Mulchatna River	5	9	27	0	72	0	0	16	88

-continued-

Appendix H2.–Page 4 of 4.

Area	Site	Businesses ^a	Guides ^a	Trips	Angler Days					Total
					Resident	Non-Res	Comped	Unknown	Crew	
T	Nushagak River - Black Point upstream to sonar site	26	91	978	396	2,335	3	51	111	2,896
T	Nushagak River - sonar site to outlet of Mulchatna	28	126	1,280	580	3,232	6	43	42	3,903
T	Nushagak River - upstream from mouth of Mulchatna River	7	34	339	7	624	1	2	0	634
T	Nushagak River system (excluding Mulchatna drainage)	12	15	58	7	157	0	0	3	167
T	Togiak River system	6	49	736	9	1,526	0	6	15	1,556
T	Wood River Lakes system	8	49	308	16	611	0	18	0	645
T	Other lakes and streams	9	62	685	38	1,391	0	13	0	1,442
	Other lakes and streams in Southcentral	5	5	66	8	192	11	1	0	212
Total Southcentral		389	1,034	31,032	8,097	81,808	219	823	945	91,892

Note: Responses with less than 4 businesses are not reported separately, to protect confidentiality of respondents. Data are current as of 03/26/2014.

^a Regional and statewide business and guide totals aren't additive because a business and/or guide can operate in multiple sites and areas.

Appendix H3.—Freshwater logbook participation by area and site, Arctic-Yukon-Kuskokwim Alaska, 2013.

Area	Site	Businesses ^a	Guides ^a	Trips	Angler Days					Total
					Resident	Non-Res	Comped	Unknown	Crew	
I	Gulkana River (West Fork to Highway)	5	6	26	17	78	0	2	4	101
I	Klutina River	12	23	298	277	690	10	21	48	1,046
I	Other lakes and streams	10	13	35	4	95	3	0	5	107
U	Lakes	9	12	130	41	709	6	3	93	852
U	Streams	10	24	579	37	1,206	3	2	35	1,283
V	Aniak River	7	23	203	8	449	2	7	2	468
V	Goodnews River	9	43	702	14	1,421	1	3	47	1,486
V	Kanektok River (Quinhagak, Chosen)	8	56	1,211	51	2,214	0	42	0	2,307
V	Kuskokwim River drainages below and including Aniak River	4	5	49	3	219	0	0	4	226
V	Other streams Kuskokwim drainages above Aniak	6	17	177	9	452	0	0	0	461
W	Streams	5	13	267	34	483	1	0	21	539
Y	Streams	6	19	528	5	1,095	0	8	10	1,118
	Other lakes and streams in Arctic-Yukon-Kuskokwim	6	9	38	1	211	0	0	1	213
Total Arctic-Yukon-Kuskokwim		63	213	4,243	501	9,322	26	88	270	10,207

Note: Responses with less than 4 businesses are not reported separately, to protect confidentiality of respondents. Data are current as of 03/26/2014.

^a Regional and statewide business and guide totals aren't additive because a business and/or guide can operate in multiple sites and areas.

Appendix H4.—Freshwater logbook participation by region, Statewide, 2013.

Region	Businesses ^a	Guides ^a	Trips	Angler Days					Total
				Resident	Non-Res	Comped	Unknown	Crew	
Southeast	64	161	2,811	367	9,310	4	69	228	9,978
Southcentral	389	1,034	31,032	8,097	81,808	219	823	945	91,892
Arctic-Yukon-Kuskokwim	63	213	4,243	501	9,322	26	88	270	10,207
Total	496	1,319	38,086	8,965	100,440	249	980	1,443	112,077

Note: Data are current as of 03/26/2014.

^a Regional and statewide business and guide totals aren't additive because a business and/or guide can operate in multiple sites and areas.

Appendix H5.—Freshwater logbook angler days and species kept by area and site, Southeast Alaska, 2013.

Area	Site	Angler Days	Salmon			Trout				Dolly Varden	Northern		
			King ^a	Coho	Sockeye	Cutthroat	Rainbow	Steelhead	Lake		Grayling	Pike	Sheefish
A	Lakes and streams	294	0	113	1	0	0	0	0	6	0	0	0
B	Staney Creek	109	0	13	0	0	0	0	0	3	0	0	0
B	Thorne River and Lake	98	0	12	0	0	0	0	0	0	0	0	0
B	Other lakes and streams	104	0	48	11	0	0	1	0	1	0	0	0
C	Kupreanof Island streams	75	0	23	0	0	0	0	0	0	0	0	0
C	Other streams	203	0	0	4	0	4	0	0	0	0	0	0
D	Baranof Island streams and lakes	527	0	1	0	0	1	0	0	11	0	0	0
D	Chichagof Island streams and lakes	146	0	1	0	0	0	0	0	0	0	0	0
D	Eva Lake and Stream (Baranof Island)	175	0	0	0	0	0	0	0	0	0	0	0
D	Fish Bay streams (Baranof Island)	37	0	9	0	0	0	0	0	0	0	0	0
D	Gut Bay Creek (Baranof Island)	58	0	1	0	0	0	0	0	0	0	0	0
D	Nakwasina Sound streams (Baranof Island)	213	0	10	0	0	0	0	0	0	0	0	0
D	Plotnikof system stream and lake (Baranof Island)	51	0	15	0	0	0	0	0	0	0	0	0
D	Politofski Creek (Baranof Island)	34	0	0	0	0	0	0	0	2	0	0	0
D	Rezanof system stream and lakes (Baranof Island)	21	0	0	0	0	0	0	0	0	0	0	0
D	Salmon Creek (Baranof Island)	75	0	1	0	0	0	0	0	0	0	0	0
D	Sitkoh Creek and Lake (Chichagof Island)	159	0	2	0	0	0	0	0	1	0	0	0
D	Other lakes and streams	142	0	136	0	0	0	0	0	0	0	0	0
E	Admiralty Island streams (Admiralty Island)	516	0	12	0	5	0	0	0	6	0	0	0
E	Other lakes	103	0	54	2	0	0	0	0	0	0	0	0
E	Other streams	1,145	5	0	1	0	0	0	0	0	0	0	0
G	Mud Bay Creek (Chichagof Island)	43	0	1	0	0	0	0	0	7	0	0	0
G	North Chichagof Island streams	345	0	1	0	0	0	0	0	0	0	0	0
G	Trail River (Chichagof Island)	119	0	0	0	0	0	0	0	0	0	0	0
H	Situk River (below weir)	191	1	138	174	0	0	0	0	2	0	0	0
H	Situk River (above weir)	1,248	2	1,088	1,420	0	0	1	0	24	0	0	0
H	Tsiu River	2,079	0	4,941	1	0	0	3	0	1	0	0	0
H	Other lakes and streams	1,595	29	3,048	253	3	0	0	0	23	0	0	0
	Other lakes and streams in Southeast	73	0	2	0	0	0	0	0	4	0	0	0
Total Southeast		9,978	37	9,670	1,867	8	5	5	0	91	0	0	0

Note: Responses with less than 4 businesses are not reported separately, to protect confidentiality of respondents. Data are current as of 03/26/2014.

^a All king salmon harvest is included, regardless of fish size.

Appendix H6.—Freshwater logbook angler days and species kept by area and site, Southcentral Alaska, 2013.

Area	Site	Angler Days	Salmon			Trout			Dolly Lake	Dolly Varden	Grayling	Northern	
			King ^a	Coho	Sockeye	Cutthroat	Rainbow	Steelhead				Pike	Sheefish
J	East Prince William Sound lakes and streams	602	1	1,270	20	3	0	0	0	12	0	0	0
J	Other lakes and streams	83	0	35	30	0	0	0	0	3	0	0	0
K	Lakes and streams	804	119	744	0	0	46	0	0	36	0	0	0
M	Chulitna/East Susitna drainage lakes	14	0	15	0	0	0	0	0	0	0	12	0
M	Deshka River (Kroto Creek) below weir	1,112	217	201	0	0	0	0	0	0	0	0	0
M	Fish Creek (into Talkeetna)	104	0	17	33	0	0	0	0	0	0	0	0
M	Fish Lake Creek and Fish Lakes (Yentna drainage)	67	0	0	0	0	0	0	0	0	0	312	0
M	Lake Creek	2,812	218	1,743	318	0	6	0	0	2	33	42	0
M	Little Willow Creek	153	0	184	0	0	0	0	0	0	0	0	0
M	Talachulitna River	710	0	479	65	0	1	0	0	4	8	0	0
M	Talkeetna River	1,198	2	183	434	0	3	0	0	9	0	0	0
M	Willow Creek	13	0	3	0	0	0	0	0	0	0	0	0
M	Yentna River drainage (remainder)	948	13	1,209	422	0	1	0	9	0	5	34	0
M	Other Chulitna/East Susitna drainage streams	48	0	16	4	0	0	0	0	0	0	0	0
M	Other West Susitna drainage lakes and streams	228	7	183	0	0	15	0	0	0	0	44	0
N	Bachatna Creek	80	0	223	0	0	0	0	0	0	0	0	0
N	Big River	153	0	265	115	0	0	0	0	0	0	0	0
N	Big River Lakes	3,208	0	3,719	3,873	0	0	0	0	20	0	0	0
N	Chuitna River	90	0	186	0	0	1	0	0	0	0	0	0
N	Coal Creek (into Beluga Lake)	27	0	32	0	0	0	0	0	1	0	0	0
N	Crescent Lake	868	0	265	654	0	0	0	6	52	0	0	0
N	Crescent River (Grecian River)	182	0	130	203	0	0	0	4	20	0	0	0
N	Kamishak River	357	0	647	0	0	0	0	0	30	2	0	0
N	Kustatan River	1,290	0	3,221	110	0	0	0	0	15	0	0	0
N	Sites south of North Forelands	126	0	136	4	0	0	0	0	70	0	0	0
N	Wolverine Creek mouth (by Big River Lakes)	1,569	0	514	2,963	0	0	0	0	0	0	0	0
N	Other lakes and streams	104	0	233	12	0	1	0	0	1	0	0	0
P	Afonasi Lake	14	1	4	0	0	0	0	0	0	0	0	0
P	Anchor River	81	0	8	0	0	0	0	0	22	0	0	0
P	Bench Lake (Johnson Trail)	28	0	0	0	0	0	0	0	0	0	0	0
P	Deep Creek	142	0	54	0	0	0	0	0	15	0	0	0

-continued-

Appendix H6.–Page 2 of 4.

Area	Site	Angler	Salmon			Trout			Dolly	Northern			
		Days	King ^a	Coho	Sockeye	Cutthroat	Rainbow	Steelhead	Lake	Varden	Grayling	Pike	Sheefish
P	Kasilof River - above Highway	510	20	196	1,031	0	0	8	0	1	0	0	0
P	Kasilof River - below Highway	6,328	1,080	992	1,423	0	0	2	0	85	0	0	0
P	Kasilof River - guided, reach not specified	58	11	30	0	0	0	0	0	0	0	0	0
P	Kenai River - Cook Inlet to Soldotna Bridge	12,741	703	7,054	4,104	0	40	0	0	59	0	0	0
P	Kenai River - Moose River to Skilak outlet	6,759	25	4,733	5,670	0	79	0	0	130	0	0	0
P	Kenai River - Skilak Inlet to Kenai Lake	7,892	0	267	3,119	0	64	0	0	92	0	0	0
P	Kenai River - Soldotna Bridge to Moose R	2,270	10	1,180	2,403	0	15	0	0	15	0	0	0
P	Kenai River - guided, reach not specified	276	12	37	175	0	0	0	0	0	0	0	0
P	Quartz Creek	109	0	0	0	0	0	0	0	0	0	0	0
P	Russian River	435	0	17	248	0	0	0	0	0	0	0	0
P	Other lakes	107	0	1	0	0	18	0	0	0	25	0	0
P	Other streams	196	11	73	1	0	0	0	0	14	0	0	0
Q	Afognak River (Litnik Stream)	87	0	128	156	0	0	0	0	0	0	0	0
Q	American River	62	13	5	0	0	0	0	0	13	0	0	0
Q	Ayakulik River - above weir	408	12	136	97	0	0	1	0	31	0	0	0
Q	Browns Lagoon River	57	0	24	0	0	0	0	0	13	0	0	0
Q	Dog Salmon Creek (Frazer River)	311	0	128	659	0	0	0	0	40	0	0	0
Q	Karluk lake and river above weir	487	0	252	132	0	0	2	0	99	0	0	0
Q	Olds River	63	13	19	0	0	0	0	0	14	0	0	0
Q	Pasagshak River	40	0	14	5	0	0	0	0	0	0	0	0
Q	Roadside lakes	62	0	44	0	0	0	0	0	16	0	0	0
Q	Roadside streams	83	1	16	14	0	0	0	0	9	0	0	0
Q	Saltery Creek	874	0	347	1,225	0	0	0	0	120	0	0	0
Q	Other remote lakes	55	0	52	26	0	0	0	0	8	0	0	0
Q	Other remote streams	1,168	8	1,567	431	0	1	0	0	97	0	0	0
R	American Creek	849	0	0	0	0	4	0	0	3	0	0	0
R	Becharof system	251	0	15	8	0	2	0	0	104	4	0	0
R	Big Creek (into Naknek)	120	0	215	0	0	0	0	0	0	0	0	0
R	Brooks River (into Naknek Lake)	1,046	2	0	18	0	40	0	0	0	1	0	0
R	Contact Creek	214	0	0	0	0	15	0	0	150	10	0	0
R	Egegik River (Becharof system)	606	1	1,212	40	0	0	0	0	17	18	1	0
R	Naknek Lake	46	0	8	0	0	0	0	1	0	0	1	0

-continued-

Area	Site	Angler Days	Salmon			Trout			Dolly		Northern		
			King ^a	Coho	Sockeye	Cutthroat	Rainbow	Steelhead	Lake	Varden	Grayling	Pike	Sheefish
R	Naknek River (dwnstream frm Rapids Camp incl trib)	1,066	439	666	55	0	9	0	0	1	0	0	0
R	Naknek River (Rapids Camp upstream to Naknek Lk,incl trib)	1,905	113	838	2,129	0	19	0	0	1	0	5	0
R	Naknek River and Tributaries	1,254	216	287	329	0	4	0	1	34	0	0	0
R	Swikshak River	117	0	422	0	0	0	0	0	0	0	0	0
R	Ugashik system	310	2	146	24	0	0	0	0	63	5	0	0
R	Other streams	2,134	165	1,143	526	0	10	0	0	17	0	0	0
S	Alagnak (Branch) River	2,804	284	849	1,686	0	17	0	9	10	20	0	0
S	Battle River	313	0	0	0	0	1	0	0	0	0	0	0
S	Chekok Creek	51	0	0	0	0	0	0	0	0	0	0	0
S	Copper River (Lake Iliamna area)	1,350	0	0	220	0	0	0	0	6	0	0	0
S	Funnel Creek	31	0	0	0	0	0	0	0	0	0	0	0
S	Gibraltar River	294	0	1	17	0	0	0	0	0	0	0	0
S	Iliamna River	478	0	0	212	0	0	0	0	9	0	0	0
S	Kijik River	70	4	0	0	0	0	0	0	0	6	0	0
S	Kukaklek River (Big Ku) (into Alagnak)	163	0	0	77	0	0	0	0	0	0	0	0
S	Kulik River	934	0	0	0	0	15	0	3	2	0	0	0
S	Kvichak River	994	0	139	1,049	0	2	0	2	12	12	0	0
S	Lake Clark	152	0	0	0	0	0	0	0	4	2	8	0
S	Lake Iliamna	113	0	6	141	0	0	0	0	0	0	14	0
S	Lower Talarik Creek	116	0	3	11	0	0	0	0	0	0	0	0
S	Moraine Creek	1,057	0	1	0	0	0	0	0	0	7	0	0
S	Nanuktuk Creek	207	0	0	0	0	0	0	0	0	0	0	0
S	Newhalen River	194	0	64	499	0	0	0	0	1	4	0	0
S	Nonvianuk River (into Alagnak)	66	0	0	5	0	0	0	10	0	0	0	0
S	Tazimina River	336	0	0	201	0	0	0	0	0	5	0	0
S	Upper Talarik Creek	55	0	16	3	0	0	0	0	0	0	0	0
T	Agulowak River	1,327	0	36	1,173	0	1	0	0	57	6	0	0
T	Agulukpak River	467	0	0	12	0	0	0	0	3	3	3	0
T	Aleknagik Lake	207	0	8	13	0	0	0	0	56	9	7	0

-continued-

Appendix H6.–Page 4 of 4.

Area	Site	Angler	Salmon			Trout			Dolly		Northern		
		Days	King ^a	Coho	Sockeye	Cutthroat	Rainbow	Steelhead	Lake	Varden	Grayling	Pike	Sheefish
T	Mulchatna River	88	15	0	91	0	1	0	0	5	1	0	0
T	Nushagak River - Black Point upstream to sonar site	2,896	1,354	680	16	0	1	0	0	17	0	8	0
T	Nushagak River - sonar site to outlet of Mulchatna	3,903	2,024	1,952	27	0	1	0	0	13	4	7	0
T	Nushagak River - upstream from mouth of Mulchatna River	634	1	26	0	0	0	0	0	0	0	0	0
T	Nushagak River system (excluding Mulchatna drainage)	167	143	3	2	0	0	0	0	3	2	0	0
T	Togiak River system	1,556	543	1,603	28	0	3	0	0	43	0	0	0
T	Wood River Lakes system	645	4	460	82	0	9	0	0	40	1	1	0
T	Other lakes and streams	1,442	315	503	416	0	14	0	6	44	4	0	0
	Other lakes and streams in Southcentral	212	0	128	3	0	0	0	0	64	0	0	0
Total Southcentral		91,892	8,145	44,662	39,292	3	459	13	51	1,947	197	499	0

Note: Responses with less than 4 businesses are not reported separately, to protect confidentiality of respondents. Data are current as of 03/26/2014.

^a All king salmon harvest is included, regardless of fish size.

Appendix H7.—Freshwater logbook angler days and species kept by area and site, Arctic-Yukon-Kuskokwim Alaska, 2013.

Area	Site	Angler Days	Salmon			Trout			Dolly		Northern		
			King ^a	Coho	Sockeye	Cutthroat	Rainbow	Steelhead	Lake	Varden	Grayling	Pike	Sheefish
I	Gulkana River (West Fork to Highway)	101	0	0	84	0	0	0	0	0	0	0	0
I	Klutina River	1,046	131	0	1,635	0	0	0	0	37	0	0	0
I	Other lakes and streams	107	2	0	47	0	0	0	4	0	8	0	0
U	Lakes	852	0	0	0	0	612	0	0	41	19	51	0
U	Streams	1,283	0	10	0	0	0	0	0	0	64	0	0
V	Aniak River	468	0	66	4	0	0	0	0	23	2	7	9
V	Goodnews River	1,486	13	767	121	0	0	0	0	84	4	0	0
V	Kanektok River (Quinhagak, Chosen)	2,307	9	828	21	0	16	0	0	88	1	0	0
V	Kuskokwim River drainages below and including Aniak River	226	0	2	0	0	0	0	0	6	43	0	0
V	Other streams Kuskokwim drainages above Aniak	461	31	158	0	0	0	0	0	13	21	80	33
W	Streams	539	0	600	0	0	0	0	0	52	3	0	0
Y	Streams	1,118	64	198	4	0	0	0	0	22	150	37	8
	Other lakes and streams in Arctic-Yukon-Kuskokwim	213	0	0	0	0	0	0	0	98	26	1	1
Total Arctic-Yukon-Kuskokwim		10,207	250	2,629	1,916	0	628	0	4	464	341	176	51

Note: Responses with less than 4 businesses are not reported separately, to protect confidentiality of respondents. Data are current as of 03/26/2014.

^a All king salmon harvest is included, regardless of fish size.

Appendix H8.—Freshwater logbook angler days and species kept by region, Statewide, 2013.

Region	Angler Days	Salmon			Trout				Dolly Varden	Northern		
		King ^a	Coho	Sockeye	Cutthroat	Rainbow	Steelhead	Lake		Grayling	Pike	Sheefish
Southeast	9,978	37	9,670	1,867	8	5	5	0	91	0	0	0
Southcentral	91,892	8,145	44,962	39,292	3	459	13	51	1,947	197	499	0
Arctic-Yukon-Kuskokwim	10,207	250	2,629	1,916	0	628	0	4	464	341	176	51
Total	112,077	8,432	56,961	43,075	11	1,092	18	55	2,502	538	675	51

Note: Data are current as of 03/26/2014.

^a All king salmon harvest is included, regardless of fish size.

Appendix H9.—Freshwater logbook angler days and species released by area and site, Southeast Alaska, 2013.

Area	Site	Angler Days	Salmon			Trout				Dolly Varden	Northern		
			King ^a	Coho	Sockeye	Cutthroat	Rainbow	Steelhead	Lake		Grayling	Pike	Sheefish
A	Lakes and streams	294	1	43	0	1,365	112	1	0	373	0	0	0
B	Staney Creek	109	0	4	0	1	0	15	0	69	0	0	0
B	Thorne River and Lake	98	0	7	0	20	10	43	0	119	0	0	0
B	Other lakes and streams	104	0	27	18	59	19	18	0	66	0	0	0
C	Kupreanof Island streams	75	0	0	0	26	0	60	0	1	0	0	0
C	Other streams	203	0	2	0	43	13	167	0	27	0	0	0
D	Baranof Island streams and lakes	527	0	2	0	775	16	22	0	1,039	0	0	0
D	Chichagof Island streams and lakes	146	0	3	0	124	66	5	0	443	0	0	0
D	Eva Lake and Stream (Baranof Island)	175	0	21	0	308	14	1	0	110	0	0	0
D	Fish Bay streams (Baranof Island)	37	0	45	0	0	0	0	0	114	0	0	0
D	Gut Bay Creek (Baranof Island)	58	0	50	0	0	0	0	0	224	0	0	0
D	Nakwasina Sound streams (Baranof Island)	213	0	20	0	0	3	0	0	589	0	0	0
D	Plotnikof system stream and lake (Baranof Island)	51	0	46	0	0	0	3	0	5	0	0	0
D	Politofski Creek (Baranof Island)	34	0	0	0	3	1	24	0	42	0	0	0
D	Rezanof system stream and lakes (Baranof Island)	21	0	0	0	0	0	28	0	20	0	0	0
D	Salmon Creek (Baranof Island)	75	1	21	0	60	100	21	0	174	0	0	0
D	Sitkoh Creek and Lake (Chichagof Island)	159	0	64	0	466	299	14	0	156	0	0	0
D	Other lakes and streams	142	0	36	2	61	56	0	0	147	0	0	0
E	Admiralty Island streams (Admiralty Island)	516	0	23	1	23	0	0	0	1,738	0	0	0
E	Other lakes	103	0	16	0	102	2	0	0	184	0	0	0
E	Other streams	1,145	63	5	0	15	0	17	0	4,981	0	0	0
G	Mud Bay Creek (Chichagof Island)	43	0	0	0	0	0	0	0	91	0	0	0
G	North Chichagof Island streams	345	0	5	1	25	0	0	0	477	0	0	0
G	Trail River (Chichagof Island)	119	0	22	0	2	0	0	0	13	0	0	0
H	Situk River (above weir)	1,248	45	2,782	1,100	0	18	1,542	0	110	0	0	0
H	Situk River (below weir)	191	0	177	28	0	20	159	0	16	0	0	0
H	Tsiu River	2,079	0	33,776	0	0	0	13	0	13	0	0	0
H	Other lakes and streams	1,595	52	10,040	406	88	12	20	0	317	0	0	0
	Other lakes and streams in Southeast	73	0	17	0	0	0	0	0	136	0	0	0
Total Southeast		9,978	162	47,254	1,556	3,566	761	2,173	0	11,794	0	0	0

Note: Responses with less than 4 businesses are not reported separately, to protect confidentiality of respondents. Data are current as of 03/26/2014.

^a All king salmon released are included, regardless of fish size.

Appendix H10.—Freshwater logbook angler days and species released by area and site, Southcentral Alaska, 2013.

Area	Site	Angler Days	Salmon			Trout				Dolly		Northern	
			King ^a	Coho	Sockeye	Cutthroat	Rainbow	Steelhead	Lake	Varden	Grayling	Pike	Sheefish
J	East Prince William Sound lakes and streams	602	29	2,140	3	17	20	0	0	297	0	0	0
J	Other lakes and streams	83	0	31	0	0	0	0	0	109	0	0	0
K	Lakes and streams	804	49	95	1	0	412	0	0	91	8	0	0
M	Chulitna/East Susitna drainage lakes	14	0	42	0	0	0	0	0	0	18	0	0
M	Deshka River (Kroto Creek) below weir	1,112	39	43	0	0	13	0	0	0	1	0	0
M	Fish Creek (into Talkeetna)	104	0	66	109	0	107	0	0	5	8	0	0
M	Fish Lake Creek and Fish Lakes (Yentna drainage)	67	0	0	0	0	0	0	0	0	0	66	0
M	Lake Creek	2,812	689	751	403	0	3,518	0	0	10	1,459	35	0
M	Little Willow Creek	153	0	17	2	0	16	0	0	0	0	0	0
M	Talachulitna River	710	537	789	21	0	1,503	0	0	78	128	0	0
M	Talkeetna River	1,198	379	166	80	0	364	0	0	168	41	0	0
M	Willow Creek	13	2	6	0	0	59	0	0	3	6	0	0
M	Yentna River drainage (remainder)	948	68	1,320	241	0	484	0	3	95	66	8	0
M	Other Chulitna/East Susitna drainage streams	48	17	22	32	0	72	0	0	1	5	0	0
M	Other West Susitna drainage lakes and streams	228	107	132	18	0	142	0	0	7	36	7	0
N	Bachatna Creek	80	0	102	0	0	0	0	0	18	0	0	0
N	Big River	153	0	73	56	0	0	0	0	5	0	0	0
N	Big River Lakes	3,208	1	508	4,726	0	0	0	0	79	0	0	0
N	Chuitna River	90	0	51	0	0	16	0	0	26	0	0	0
N	Coal Creek (into Beluga Lake)	27	0	47	0	0	55	0	0	244	0	0	0
N	Crescent Lake	868	2	5	286	0	0	0	93	1,584	16	0	0
N	Crescent River (Grecian River)	182	2	20	355	0	0	0	9	256	0	0	0
N	Kamishak River	357	0	869	2	0	22	0	0	1,919	13	0	0
N	Kustatan River	1,290	2	361	37	0	0	0	0	249	0	0	0
N	Sites south of North Forelands	126	1	127	13	0	0	0	5	319	0	0	0
N	Wolverine Creek mouth (by Big River Lakes)	1,569	0	195	2,460	0	0	0	0	0	0	0	0
N	Other lakes and streams	104	0	115	2	0	0	0	0	7	0	0	0
P	Afonasi Lake	14	1	0	0	0	0	0	0	0	0	0	0
P	Anchor River	81	5	19	0	0	1	14	0	125	0	0	0
P	Bench Lake (Johnson Trail)	28	0	0	0	0	0	0	0	0	520	0	0
P	Deep Creek	142	13	15	0	0	5	23	0	83	0	0	0

-continued-

Appendix H10.–Page 2 of 4.

Area	Site	Angler Days	Salmon			Trout				Dolly Varden	Northern		
			King ^a	Coho	Sockeye	Cutthroat	Rainbow	Steelhead	Lake		Grayling	Pike	Sheefish
P	Kasilof River - below Highway	6,356	1,004	22	61	0	214	113	0	395	2	0	0
P	Kasilof River - above Highway	510	8	0	48	0	57	10	0	206	0	0	0
P	Kasilof River - guided, reach not specified	30	3	0	0	0	1	0	0	8	0	0	0
P	Kenai River - Cook Inlet to Soldotna Bridge	12,741	516	106	244	0	1,758	0	0	1,368	4	0	0
P	Kenai River - Soldotna Bridge to Moose R	2,270	57	65	479	0	2,984	0	0	776	14	0	0
P	Kenai River - Moose River to Skilak outlet	6,759	59	464	1,973	0	17,426	0	0	10,002	14	0	0
P	Kenai River - Skilak Inlet to Kenai Lake	7,892	9	82	1,579	0	20,122	0	11	22,317	121	0	0
P	Kenai River - guided, reach not specified	276	0	4	92	0	224	0	0	189	1	0	0
P	Quartz Creek	109	0	0	70	0	86	0	0	1,239	3	0	0
P	Russian River	435	0	82	355	0	1,003	0	0	313	0	0	0
P	Other lakes	107	0	5	0	0	351	0	0	18	17	0	0
P	Other streams	196	2	17	2	0	55	2	0	147	0	0	0
Q	Afognak River (Litnik Stream)	87	0	39	10	0	2	4	0	15	0	0	0
Q	American River	62	7	0	0	0	0	0	0	134	0	0	0
Q	Ayakulik River - above weir	408	237	1,359	418	0	0	55	0	501	0	0	0
Q	Browns Lagoon River	57	0	3	0	0	0	0	0	123	0	0	0
Q	Dog Salmon Creek (Frazer River)	311	0	72	605	0	1	0	0	52	0	0	0
Q	Karluk lake and river above weir	487	80	347	319	0	0	248	0	1,157	0	0	0
Q	Olds River	63	4	4	0	0	0	0	0	34	0	0	0
Q	Pasagshak River	40	0	2	4	0	0	0	0	13	0	0	0
Q	Saltery Creek	874	0	1,088	620	0	6	1	0	529	0	0	0
Q	Other remote lakes	55	0	30	53	0	1	0	0	27	0	0	0
Q	Other remote streams	1,168	115	1,800	340	0	78	40	0	3,399	0	0	0
Q	Roadside lakes	62	0	141	4	0	1	0	0	7	0	0	0
Q	Other Roadside streams	83	0	20	11	0	0	1	0	118	0	0	0
R	American Creek	849	0	0	67	0	2,252	0	73	14,865	160	15	0
R	Becharof system	251	1	52	46	0	314	0	10	3,538	529	0	0
R	Big Creek (into Naknek)	120	0	21	0	0	142	0	0	103	46	1	0
R	Brooks River (into Naknek Lake)	1,046	1	0	744	0	8,050	0	2	411	137	1	0
R	Contact Creek	214	2	2	3	0	307	0	0	3,852	857	20	0
R	Egegik River (Becharof system)	606	3	357	78	0	36	0	0	45	32	4	0
R	Naknek Lake	46	0	4	1	0	57	0	2	0	130	10	0

-continued-

Area	Site	Angler Days	Salmon			Trout			Dolly		Northern		
			King ^a	Coho	Sockeye	Cutthroat	Rainbow	Steelhead	Lake	Varden	Grayling	Pike	Sheefish
R	Naknek River (dwnstream frm Rapids Camp incl trib)	1,066	141	61	42	0	554	0	0	74	14	47	0
R	Naknek River (Rapids Camp upstream to Naknek Lk,incl trib)	1,905	116	97	680	0	6,390	0	1	458	313	22	0
R	Naknek River and Tributaries	1,254	285	112	540	0	3,987	0	515	4,217	707	20	0
R	Swikshak River	117	0	564	0	0	0	0	0	0	0	0	0
R	Ugashik system	310	2	64	134	0	0	0	24	3,524	439	0	0
R	Other streams	2,134	855	3,552	822	0	362	1	0	2,749	21	0	0
S	Alagnak (Branch) River	2,804	1,256	2,435	1,214	0	3,701	0	99	439	2,003	0	0
S	Battle River	313	0	0	9	0	1,329	0	42	7	454	0	0
S	Chekok Creek	51	0	0	1	0	899	0	0	15	1	0	0
S	Copper River (Lake Iliamna area)	1,350	0	0	424	0	13,780	0	0	764	5	29	0
S	Funnel Creek	31	0	0	0	0	147	0	0	2	4	0	0
S	Gibraltar River	294	0	0	85	0	3,789	0	2	27	11	0	0
S	Iliamna River	478	0	0	432	0	1,250	0	28	5,580	85	35	0
S	Kijik River	70	0	0	0	0	10	0	0	19	1,239	0	0
S	Kukaklek River (Big Ku) (into Alagnak)	163	1	0	104	0	842	0	221	7	77	0	0
S	Kulik River	934	0	1	55	0	10,705	0	335	142	208	1	0
S	Kvichak River	993	13	272	1,329	0	5,801	0	4	230	2,771	10	0
S	Lake Clark	152	0	0	2	0	4	0	39	109	400	296	0
S	Lake Iliamna	113	0	6	266	0	32	0	0	125	0	531	0
S	Lower Talarik Creek	116	0	4	14	0	732	0	0	4	53	0	0
S	Moraine Creek	1,057	0	1	176	0	9,457	0	51	144	654	0	0
S	Nanuktuk Creek	207	0	0	9	0	2,495	0	2	1,284	34	0	0
S	Newhalen River	194	0	30	308	0	532	0	0	27	204	0	0
S	Nonvianuk River (into Alagnak)	66	9	2	8	0	471	0	36	21	1	0	0
S	Tazimina River	336	1	0	161	0	2,082	0	0	40	2,071	0	0
S	Upper Talarik Creek	55	1	9	16	0	436	0	0	16	30	0	0
T	Agulowak River	1,327	0	6	808	0	6,437	0	0	6,293	3,014	87	0
T	Agulukpak River	467	0	3	87	0	2,795	0	0	4,209	1,333	185	0
T	Aleknagik Lake	207	0	49	16	0	0	0	0	998	38	120	0
T	Mulchatna River	88	48	28	92	0	10	0	1	74	213	0	0

-continued-

Appendix H10.–Page 4 of 4.

Area	Site	Angler Days	Salmon			Trout			Dolly		Northern		
			King	Coho	Sockeye	Cutthroat	Rainbow	Steelhead	Lake	Varden	Grayling	Pike	Sheefish
T	Nushagak River - Black Point upstream to sonar site	2,896	9,628	573	1	0	9	0	0	48	4	2	0
T	Nushagak River - sonar site to outlet of Mulchatna	3,903	8,305	1,121	6	0	29	0	2	63	86	5	0
T	Nushagak River - upstream from mouth of Mulchatna River	634	4	66	14	0	1,332	0	0	4,940	2,529	38	0
T	Nushagak River system (excluding Mulchatna drainage)	167	240	27	1	0	66	0	0	116	306	21	0
T	Togiak River system	1,556	2,210	1,306	78	0	363	0	0	2,603	44	0	0
T	Wood River Lakes system	645	118	248	302	0	1,021	0	0	3,468	963	332	0
T	Other lakes and streams	1,442	1,159	1,971	867	0	1,189	0	442	1,498	2,890	52	0
	Other lakes and streams in Southcentral	212	15	67	0	0	83	0	0	179	0	0	0
Total Southcentral		91,892	28,458	26,990	26,176	17	145,458	512	2,052	116,192	27,611	2,000	0

Note: Responses with less than 4 businesses are not reported separately, to protect confidentiality of respondents. Data are current as of 03/26/2014.

^a All king salmon released are included, regardless of fish size.

Appendix H11.–Freshwater logbook angler days and species released by area and site, Arctic-Yukon-Kuskokwim Alaska, 2013.

Area	Site	Angler Days	Salmon			Trout				Dolly		Northern	
			King ^a	Coho	Sockeye	Cutthroat	Rainbow	Steelhead	Lake	Varden	Grayling	Pike	Sheefish
I	Gulkana River (West Fork to Highway)	101	79	0	26	0	1	0	0	0	0	0	0
I	Klutina River	1,046	214	0	366	0	10	0	0	16	12	0	0
I	Other lakes and streams	107	11	43	53	0	61	0	2	52	219	0	0
U	Lakes	852	0	0	0	0	312	0	0	7	289	128	0
U	Streams	1,283	1	63	0	0	0	0	0	132	9,836	48	0
V	Aniak River	468	12	612	72	0	1,120	0	0	3,404	1,924	196	17
V	Goodnews River	1,486	364	5,131	127	0	665	0	228	6,274	662	0	0
V	Kanektok River (Quinhagak, Chosen)	2,307	686	3,921	300	0	10,297	0	65	15,429	1,558	11	0
V	Kuskokwim River drainages below and including Aniak River	226	5	146	1	0	628	0	0	580	856	1	0
V	Other streams Kuskokwim drainages above Aniak	461	30	210	2	0	4	0	0	94	167	974	171
W	Streams	539	65	3,449	0	0	0	0	0	712	2,544	6	0
Y	Streams	1,118	386	385	48	0	0	0	0	1,144	9,447	4,674	141
	Other lakes and streams in Arctic-Yukon-Kuskokwim	213	0	35	12	0	3	0	0	314	182	2	60
Total Arctic-Yukon-Kuskokwim		10,207	1,853	13,995	1,007	0	13,101	0	295	28,158	27,696	6,040	389

Note: Responses with less than 4 businesses are not reported separately, to protect confidentiality of respondents. Data are current as of 03/26/2014.

^a All king salmon released are included, regardless of fish size.

Appendix H12.–Freshwater logbook angler days and species released by region, Statewide, 2013.

Region	Angler Days	Salmon			Trout				Dolly Varden	Grayling	Northern Pike	Sheefish
		King ^a	Coho	Sockeye	Cutthroat	Rainbow	Steelhead	Lake				
Southeast	9,978	162	47,254	1,556	3,566	761	2,173	0	11,794	0	0	0
Southcentral	91,892	28,458	26,990	26,176	17	145,458	512	2,052	116,192	27,611	2,000	0
Arctic-Yukon-Kuskokwim	10,207	1,853	13,995	1,007	0	13,101	0	295	28,158	27,696	6,040	389
Total	112,077	30,473	88,239	28,739	3,583	159,320	2,685	2,347	156,144	55,307	8,040	389

Note: Data are current as of 03/26/2014.

^a All king salmon released are included, regardless of fish size.

**APPENDIX I.
SALTWATER LOGBOOK SUMMARIES BY AREA AND
PORT OF OFFLOADING**

Appendix II.—Saltwater logbook participation and effort by area and port of offloading, Southeast Alaska, 2013.

Area	Port of Offloading	Businesses ^a	Vessels ^a	Trips	Angler Days					Anglers
					Resident	Non-Res	Comp	Unknown	Crew	
A	Ketchikan	62	93	5,264	241	21,839	37	165	25	22,307
A	Knudson Cove	14	19	1,337	33	5,528	10	82	2	5,655
A	Other	4	22	941	10	2,283	13	12	0	2,318
B	Coffman Cove	6	6	116	9	478	14	1	0	502
B	Craig	16	41	1,461	106	5,092	13	7	127	5,345
B	Klawock	5	16	425	30	1,301	3	8	36	1,378
B	Thorne Bay	4	9	386	14	1,383	0	13	0	1,410
B	Whale Pass (POW - SE)	5	9	134	2	524	3	14	5	548
B	Other	14	58	3,017	415	11,686	15	23	576	12,715
C	Petersburg	24	34	665	40	2,479	24	7	5	2,555
C	Wrangell	5	5	139	11	563	1	0	3	578
C	Other	5	7	120	14	435	1	2	0	452
D	Sitka	90	145	6,759	580	26,655	106	90	334	27,765
D	Other	10	18	547	7	1,705	6	2	10	1,730
E	Angoon	10	21	528	18	1,898	2	13	7	1,938
E	Auke Bay	27	40	2,175	255	9,099	36	125	10	9,525
E	Juneau	22	36	555	24	1,992	1	11	1	2,029
E	Other	9	16	469	23	2,008	3	4	45	2,083
F	Haines\Skagway	6	6	478	25	1,796	6	3	3	1,833
G	Bartlett Cove	6	7	45	9	185	0	0	5	199
G	Elfin Cove	9	24	927	17	3,612	9	6	1	3,645
G	Gustavus	11	26	1,144	36	4,886	21	5	0	4,948
G	Hoonah	6	8	162	31	647	2	0	0	680
G	Pelican	7	11	308	12	1,077	1	1	0	1,091
G	Other	6	8	769	10	2,597	0	6	0	2,613
H	Yakutat	9	13	710	146	2,869	43	11	88	3,157
Total Southeast		301	578	29,581	2,118	114,617	370	611	1,283	118,999

Note: Participation (number of businesses, vessels, trips and angler days) was determined by number of trips, not targeted species. Responses with less than four businesses are not reported separately, to protect confidentiality of respondents. Data are current as of 03/18/2014.

^a Business and vessel regional and total counts are not additive as they can offload at multiple ports.

Appendix I2.—Saltwater logbook participation and effort by area and port of offloading, Southcentral Alaska, 2013.

Area	Port of Offloading	Businesses ^a	Vessels ^a	Trips	Angler Days					
					Resident	Non-Res	Comp	Unknown	Crew	Anglers
J	Port Ashton	4	5	51	14	263	0	0	48	325
J	Seward	55	90	4,746	10,848	25,854	184	163	3,374	40,423
J	Valdez	28	35	1,032	2,326	2,736	24	24	359	5,469
J	Whittier	13	14	623	1,403	2,090	24	16	261	3,794
J	Other	9	10	112	62	418	3	4	29	516
P	Anchor Point	27	30	1,247	1,322	5,250	85	42	885	7,584
P	Deep Creek	44	68	3,213	4,623	12,974	107	42	2,459	20,205
P	Happy Valley	5	9	276	85	834	1	6	146	1,072
P	Homer	85	105	5,001	8,498	32,062	249	119	3,642	44,570
P	Ninilchik	8	12	460	825	1,473	38	19	401	2,756
P	Seldovia	4	4	88	76	313	0	3	52	444
P	Other	7	10	88	5	250	1	1	17	274
Q	Kodiak	19	21	784	563	3,045	76	8	523	4,215
Q	Larsen Bay	8	16	448	76	1,767	17	4	215	2,079
Q	Port Lions	4	5	132	45	441	0	0	34	520
Q	Other	24	40	1,011	210	3,553	26	18	87	3,894
R	Other	8	10	141	56	417	7	13	15	508
Total Southcentral		273	396	19,453	31,037	93,740	842	482	12,547	138,648

Note: Participation (number of businesses, vessels, trips and angler days) was determined by number of trips, not targeted species. Responses with less than 4 businesses are not reported separately, to protect confidentiality of respondents. Data are current as of 03/18/2014.

^a Business and vessel regional and total counts are not additive as they can offload at multiple ports.

Appendix I3.–Saltwater logbook participation and effort by region, statewide, 2013.

Region	Businesses ^a	Vessels ^a	Trips	Angler Days					
				Resident	Non-Res	Comp	Unknown	Crew	Anglers
Southeast	301	578	29,581	2,118	114,617	370	611	1,283	118,999
Southcentral	273	396	19,453	31,037	93,740	842	482	12,547	138,648
Total	573	973	49,034	33,155	208,357	1,212	1,093	13,830	257,647

Note: Participation (number of businesses, vessels, trips and angler days) was determined by number of trips, not targeted species. Responses with less than 4 businesses are not reported separately, to protect confidentiality of respondents. Data are current as of 03/18/2014.

^a Business and vessel regional and total counts are not additive as they can offload at multiple ports.

Appendix I4.–Saltwater logbook salmon participation, effort, kept and released by area and port of offloading, Southeast Alaska, 2013.

Area	Port of Offloading	Businesses ^a	Vessels ^a	Trips	Anglers	King salmon				Coho	Sockeye	Other Salmon
						Large		Small				
						Kept	Released	Kept	Released			
A	Ketchikan	62	93	5,264	22,307	1,534	214	416	2,393	22,468	181	24,885
A	Knudson Cove	14	19	1,337	5,655	399	66	62	1,104	7,211	36	6,288
A	Other	4	22	941	2,318	288	119	27	1,294	4,570	19	1,642
B	Coffman Cove	6	6	116	502	20	8	3	53	965	18	365
B	Craig	16	41	1,461	5,345	2,096	1,762	37	122	24,972	27	807
B	Klawock	5	16	425	1,378	510	377	15	18	6,643	11	197
B	Thorne Bay	4	9	386	1,410	24	41	6	226	3,615	14	986
B	Whale Pass (Prince of Wales)	5	9	134	548	18	1	4	35	718	4	214
B	Other	14	58	3,017	12,715	3,808	3,721	80	920	45,229	60	5,979
C	Petersburg	24	34	665	2,555	108	7	5	56	2,046	32	1,502
C	Wrangell	5	5	139	578	91	19	1	154	395	1	20
C	Other	5	7	120	452	30	11	0	5	1,198	0	116
D	Sitka	90	145	6,759	27,765	12,966	9,696	98	2,126	75,990	327	8,087
D	Other	10	18	547	1,730	169	64	16	74	3,756	172	972
E	Angoon	10	21	528	1,938	282	45	16	437	4,211	10	2,839
E	Auke Bay	27	40	2,175	9,525	465	25	66	363	4,185	156	6,823
E	Juneau	22	36	555	2,029	57	9	4	34	484	0	475
E	Other	9	16	469	2,083	51	2	3	25	2,700	51	3,607
F	Haines\Skagway	6	6	478	1,833	194	30	4	768	0	0	49
G	Bartlett Cove	6	7	45	199	8	3	4	4	38	0	52
G	Elfin Cove	9	24	927	3,645	1,087	622	17	428	5,789	36	1,946
G	Gustavus	11	26	1,144	4,948	665	152	24	222	2,722	104	1,856
G	Hoonah	6	8	162	680	10	4	0	6	90	0	51
G	Pelican	7	11	308	1,091	387	586	16	221	1,856	3	195
G	Other	6	8	769	2,613	98	11	10	78	3,230	21	4,977
H	Yakutat	9	13	710	3,157	227	39	24	44	4,480	6	27
Total Southeast		301	578	29,581	118,999	25,592	17,634	958	11,210	229,561	1,289	74,957

Note: Participation (number of businesses, vessels, trips and angler days) was determined by number of trips, not targeted species. Responses with less than 4 businesses are not reported separately, to protect confidentiality of respondents. Data are current as of 03/18/2014.

^a Business and vessel regional and total counts are not additive as they can offload at multiple ports.

Appendix I5.—Saltwater logbook salmon participation, effort, kept and released by area and port of offloading, Southcentral Alaska, 2013.

Area	Port of Offloading	Businesses ^a	Vessels ^a	Trips	Anglers	King salmon				Coho	Sockeye	Other Salmon
						Large		Small				
						Kept	Released	Kept	Released			
J	Port Ashton	4	5	51	325	1	0	4	0	385	0	21
J	Seward	55	90	4,746	40,423	442	78	332	75	48,486	700	3,818
J	Valdez	28	35	1,032	5,469	10	0	46	45	10,850	41	240
J	Whittier	13	14	623	3,794	16	0	8	0	1,088	51	277
J	Other	9	10	112	516	50	16	3	145	659	4	218
P	Anchor Point	27	30	1,247	7,584	118	4	18	1	45	2	78
P	Deep Creek	44	68	3,213	20,205	349	8	102	11	38	3	53
P	Happy Valley	5	9	276	1,072	85	12	12	4	65	0	5
P	Homer	85	105	5,001	44,570	2,606	56	763	67	2,607	79	1,501
P	Ninilchik	8	12	460	2,756	9	0	2	0	0	0	0
P	Seldovia	4	4	88	444	7	0	5	0	11	10	36
P	Other	7	10	88	274	12	0	0	0	26	2	7
Q	Kodiak	19	21	784	4,215	428	2	158	31	820	4	513
Q	Larsen Bay	8	16	448	2,079	57	2	117	7	318	3	18
Q	Port Lions	4	5	132	520	102	0	56	2	155	114	17
Q	Other	24	40	1,011	3,894	418	20	351	220	1,568	473	292
R	Other	8	10	141	508	7	0	3	0	36	3	0
Total Southcentral		273	396	19,453	138,648	4,717	198	1,980	608	67,157	1,489	7,094

Note: Participation (number of businesses, vessels, trips and angler days) was determined by number of trips, not targeted species. Responses with less than 4 businesses are not reported separately, to protect confidentiality of respondents. Data are current as of 03/18/2014.

^a Business and vessel regional and total counts are not additive as they can offload at multiple ports.

Appendix I6.—Saltwater logbook salmon participation, effort, kept and released by region, statewide, 2013.

Region	Businesses ^a	Vessels ^a	Trips	Anglers	King salmon				Coho	Sockeye	Other Salmon
					Large		Small				
					Kept	Released	Kept	Released			
Southeast	301	578	29,581	118,999	25,592	17,634	958	11,210	229,561	1,289	74,957
Southcentral	273	396	19,453	138,648	4,717	198	1,980	608	67,157	1,489	7,094
Total	573	973	49,034	257,647	30,309	17,832	2,938	11,818	296,718	2,778	82,051

Note: Participation (number of businesses, vessels, trips and angler days) was determined by number of trips, not targeted species. Responses with less than 4 businesses are not reported separately, to protect confidentiality of respondents. Data are current as of 03/18/2014.

^a Business and vessel regional and total counts are not additive as they can offload at multiple ports.

Appendix I7.—Saltwater logbook bottomfish participation, effort, kept and released by area and port of offloading, Southeast Alaska, 2013.

Area	Port of Offloading	Businesses ^a	Vessels ^a	Trips	Anglers	Rockfish												Shark
						Halibut		Lingcod		Pelagic		Yelloweye		Non-Pelagic		Sablefish		
						Kept	Released	Kept	Released	Kept	Released	Kept	Released	Kept	Released	Kept	Released	
A	Ketchikan	62	93	5,264	22,307	4,952	2,719	232	112	1,569	144	1,768	98	4,770	306	14	4	0
A	Knudson Cove	14	19	1,337	5,655	779	64	98	16	912	24	139	0	361	23	17	0	0
A	Other	4	22	941	2,318	981	189	19	0	478	6	135	3	589	39	7	3	0
B	Coffman Cove	6	6	116	502	419	389	1	0	87	14	15	0	195	14	0	0	0
B	Craig	16	41	1,461	5,345	4,595	5,017	912	349	7,993	200	1,017	67	1,691	41	0	0	0
B	Klawock	5	16	425	1,378	1,225	628	129	26	1,683	39	91	20	568	11	12	0	0
B	Thorne Bay	4	9	386	1,410	769	574	37	27	392	3	119	4	927	31	1	0	0
B	Whale Pass (Prince of Wales)	5	9	134	548	323	159	0	0	44	0	4	0	96	0	8	0	0
B	Other	14	58	3,017	12,715	9,483	6,254	1,689	551	9,143	887	1,674	108	3,827	1,003	2	2	1
C	Petersburg	24	34	665	2,555	1,709	4,126	18	12	567	55	96	12	197	5	4	0	0
C	Wrangell	5	5	139	578	98	92	2	0	6	10	0	0	8	13	0	0	0
C	Other	5	7	120	452	300	492	24	31	405	31	55	12	259	69	0	0	0
D	Sitka	90	145	6,759	27,765	16,377	9,580	1,957	3,133	48,728	2,193	4,252	1,062	8,353	452	2,086	68	2
D	Other	10	18	547	1,730	891	552	62	33	780	235	154	5	362	5	16	0	0
E	Angoon	10	21	528	1,938	1,431	905	11	4	420	14	66	2	874	60	623	20	0
E	Auke Bay	27	40	2,175	9,525	3,015	3,362	2	4	811	60	36	0	950	7	4,503	14	0
E	Juneau	22	36	555	2,029	351	383	18	6	360	45	40	1	138	13	0	1	0
E	Other	9	16	469	2,083	1,554	1,017	150	188	4,388	96	444	43	681	16	2	0	0
F	Haines\Skagway	6	6	478	1,833	136	133	1	0	0	0	0	0	0	0	0	0	0
G	Bartlett Cove	6	7	45	199	121	163	0	0	11	4	2	0	2	0	0	0	0
G	Elfin Cove	9	24	927	3,645	2,348	2,729	519	1,406	5,122	182	497	187	1,158	52	63	0	0
G	Gustavus	11	26	1,144	4,948	3,615	5,036	285	141	1,387	36	304	10	284	0	0	0	0
G	Hoonah	6	8	162	680	261	634	1	1	0	1	4	0	8	0	0	0	0
G	Pelican	7	11	308	1,091	1,086	1,233	84	224	435	189	138	20	43	33	50	0	0
G	Other	6	8	769	2,613	2,752	2,899	12	28	215	17	35	4	31	1	15	0	0
H	Yakutat	9	13	710	3,157	3,888	625	723	94	3,008	63	34	2	322	12	0	0	0
Total Southeast		301	578	29,581	118,999	63,459	49,954	6,986	6,386	88,944	4,548	11,119	1,660	26,694	2,206	7,423	112	3

Note: Participation (number of businesses, vessels, trips and angler days) was determined by number of trips, not targeted species. Responses with less than 4 businesses are not reported separately, to protect confidentiality of respondents. Data are current as of 03/18/2014.

^a Business and vessel regional and total counts are not additive as they can offload at multiple ports.

Appendix I8.—Saltwater logbook bottomfish participation, effort, kept and released by area and port of offloading, Southcentral Alaska, 2013.

Area	Port of Offloading	Businesses ^a	Vessels ^a	Trips	Anglers	Halibut		Lingcod		Rockfish						Sablefish		Shark
						Kept	Released	Kept	Released	Pelagic		Yelloweye		Non-Pelagic		Kept	Released	Kept
J	Port Ashton	4	5	51	325	428	83	97	23	555	0	97	0	34	0	0	0	0
J	Seward	55	90	4,746	40,423	47,551	12,443	4,793	2,597	37,285	1,549	5,108	203	4,667	291	115	1	0
J	Valdez	28	35	1,032	5,469	5,280	2,128	1,056	528	1,975	108	1,309	52	508	18	19	0	0
J	Whittier	13	14	623	3,794	5,518	1,582	323	63	2,506	236	436	2	344	9	2	0	0
J	Other	9	10	112	516	506	112	28	15	93	1	86	12	83	33	0	0	0
P	Anchor Point	27	30	1,247	7,584	13,762	13,819	570	247	780	9	127	28	79	21	0	0	0
P	Deep Creek	44	68	3,213	20,205	37,724	37,055	178	22	512	36	94	5	64	1	0	0	2
P	Happy Valley	5	9	276	1,072	1,736	1,989	0	0	14	0	0	0	0	0	0	0	0
P	Homer	85	105	5,001	44,570	79,687	77,506	2,633	783	11,290	626	1,202	61	503	40	0	0	0
P	Ninilchik	8	12	460	2,756	5,102	6,775	0	0	0	0	0	0	0	0	0	0	0
P	Seldovia	4	4	88	444	809	618	3	1	11	0	30	1	0	0	0	0	0
P	Other	7	10	88	274	393	178	0	0	31	33	1	1	13	2	0	0	0
Q	Kodiak	19	21	784	4,215	6,163	2,223	717	72	10,215	661	388	12	241	6	1	0	0
Q	Larsen Bay	8	16	448	2,079	2,842	5,404	239	52	1,558	436	213	38	29	3	14	9	0
Q	Port Lions	4	5	132	520	886	341	51	5	786	22	40	0	48	0	0	0	2
Q	Other	24	40	1,011	3,894	3,269	2,869	811	461	3,037	2,718	442	86	233	147	3	0	0
R	Other	8	10	141	508	621	536	18	3	22	23	0	0	51	76	0	0	0
Total Southcentral		273	396	19,453	138,648	212,277	165,661	11,517	4,872	70,670	6,458	9,573	501	6,897	647	154	10	4

Note: Participation (number of businesses, vessels, trips and angler days) was determined by number of trips, not targeted species. Responses with less than 4 businesses are not reported separately, to protect confidentiality of respondents. Data are current as of 03/18/2014.

^a Business and vessel regional and total counts are not additive as they can offload at multiple ports.

Appendix I9.—Saltwater logbook bottomfish participation, effort, kept and released by region, statewide, 2013.

Region	Businesses ^a	Vessels ^a	Trips	Anglers	Halibut		Lingcod		Rockfish						Sablefish		Shark
					Kept	Released	Kept	Released	Pelagic		Yelloweye		Non-Pelagic		Kept	Released	Kept
Southeast	301	578	29,581	118,999	63,459	49,954	6,986	6,386	88,944	4,548	11,119	1,660	26,694	2,206	7,423	112	3
Southcentral	273	396	19,453	138,648	212,277	165,661	11,517	4,872	70,670	6,458	9,573	501	6,897	647	154	10	4
Total	573	973	49,034	257,647	275,736	215,615	18,503	11,258	159,614	11,006	20,692	2,161	33,591	2,853	7,577	122	7

Note: Participation (number of businesses, vessels, trips and angler days) was determined by number of trips, not targeted species. Responses with less than 4 businesses are not reported separately, to protect confidentiality of respondents. Data are current as of 03/18/2014.

^a Business and vessel regional and total counts are not additive as they can offload at multiple ports.