

Fishery Data Series No. 13-37

**Participation, Effort, and Harvest in the Sport Fish
Business/Guide Licensing and Logbook Programs,
2012**

by

Dora Sigurdsson

and

Bob Powers

July 2013

Alaska Department of Fish and Game

Divisions of Sport Fish and Commercial Fisheries



Symbols and Abbreviations

The following symbols and abbreviations, and others approved for the *Système International d'Unités* (SI), are used without definition in the following reports by the Divisions of Sport Fish and of Commercial Fisheries: Fishery Manuscripts, Fishery Data Series Reports, Fishery Management Reports, and Special Publications. All others, including deviations from definitions listed below, are noted in the text at first mention, as well as in the titles or footnotes of tables, and in figure or figure captions.

Weights and measures (metric)		General		Mathematics, statistics	
centimeter	cm	Alaska Administrative Code	AAC	<i>all standard mathematical signs, symbols and abbreviations</i>	
deciliter	dL	all commonly accepted abbreviations	e.g., Mr., Mrs., AM, PM, etc.	alternate hypothesis	H_A
gram	g	all commonly accepted professional titles	e.g., Dr., Ph.D., R.N., etc.	base of natural logarithm	e
hectare	ha	at	@	catch per unit effort	CPUE
kilogram	kg	compass directions:		coefficient of variation	CV
kilometer	km	east	E	common test statistics	(F, t, χ^2 , etc.)
liter	L	north	N	confidence interval	CI
meter	m	south	S	correlation coefficient	
milliliter	mL	west	W	(multiple)	R
millimeter	mm	copyright	©	correlation coefficient (simple)	r
		corporate suffixes:		covariance	cov
Weights and measures (English)		Company	Co.	degree (angular)	$^\circ$
cubic feet per second	ft ³ /s	Corporation	Corp.	degrees of freedom	df
foot	ft	Incorporated	Inc.	expected value	E
gallon	gal	Limited	Ltd.	greater than	>
inch	in	District of Columbia	D.C.	greater than or equal to	\geq
mile	mi	et alii (and others)	et al.	harvest per unit effort	HPUE
nautical mile	nmi	et cetera (and so forth)	etc.	less than	<
ounce	oz	exempli gratia	e.g.	less than or equal to	\leq
pound	lb	(for example)		logarithm (natural)	ln
quart	qt	Federal Information Code	FIC	logarithm (base 10)	log
yard	yd	id est (that is)	i.e.	logarithm (specify base)	log ₂ , etc.
		latitude or longitude	lat. or long.	minute (angular)	'
Time and temperature		monetary symbols (U.S.)	\$, ¢	not significant	NS
day	d	months (tables and figures): first three letters	Jan, ..., Dec	null hypothesis	H_0
degrees Celsius	°C	registered trademark	®	percent	%
degrees Fahrenheit	°F	trademark	™	probability	P
degrees kelvin	K	United States (adjective)	U.S.	probability of a type I error (rejection of the null hypothesis when true)	α
hour	h	United States of America (noun)	USA	probability of a type II error (acceptance of the null hypothesis when false)	β
minute	min	U.S.C.	United States Code	second (angular)	"
second	s	U.S. state	use two-letter abbreviations (e.g., AK, WA)	standard deviation	SD
Physics and chemistry				standard error	SE
all atomic symbols				variance	
alternating current	AC			population sample	Var
ampere	A			sample	var
calorie	cal				
direct current	DC				
hertz	Hz				
horsepower	hp				
hydrogen ion activity (negative log of)	pH				
parts per million	ppm				
parts per thousand	ppt, ‰				
volts	V				
watts	W				

FISHERY DATA SERIES NO. 13-37

**PARTICIPATION, EFFORT, AND HARVEST IN THE SPORT FISH
BUSINESS/GUIDE LICENSING AND LOGBOOK PROGRAMS, 2012**

by

Dora Sigurdsson

and

Bob Powers

Division of Sport Fish Research and Technical Services, Anchorage

Alaska Department of Fish and Game
Division of Sport Fish, Research and Technical Services
333 Raspberry Road, Anchorage, Alaska, 99518-1599

July 2013

ADF&G Fishery Data Series was established in 1987 for the publication of Division of Sport Fish technically oriented results for a single project or group of closely related projects, and in 2004 became a joint divisional series with the Division of Commercial Fisheries. Fishery Data Series reports are intended for fishery and other technical professionals and are available through the Alaska State Library and on the Internet: <http://www.adfg.alaska.gov/sf/publications/>. This publication has undergone editorial and peer review.

*Dora Sigurdsson and Bob Powers,
Alaska Department of Fish and Game, Division of Sport Fish, Research and Technical Services,
333 Raspberry Road, Anchorage, AK 99518-1599, USA*

This document should be cited as:

Sigurdsson, D., and B. Powers. 2013. Participation, effort, and harvest in the sport fish business/guide licensing and logbook programs, 2012. Alaska Department of Fish and Game, Fishery Data Series No. 13-37, Anchorage.

The Alaska Department of Fish and Game (ADF&G) administers all programs and activities free from discrimination based on race, color, national origin, age, sex, religion, marital status, pregnancy, parenthood, or disability. The department administers all programs and activities in compliance with Title VI of the Civil Rights Act of 1964, Section 504 of the Rehabilitation Act of 1973, Title II of the Americans with Disabilities Act (ADA) of 1990, the Age Discrimination Act of 1975, and Title IX of the Education Amendments of 1972.

If you believe you have been discriminated against in any program, activity, or facility please write:

ADF&G ADA Coordinator, P.O. Box 115526, Juneau, AK 99811-5526

U.S. Fish and Wildlife Service, 4401 N. Fairfax Drive, MS 2042, Arlington, VA 22203

Office of Equal Opportunity, U.S. Department of the Interior, 1849 C Street NW MS 5230, Washington DC 20240

The department's ADA Coordinator can be reached via phone at the following numbers:

(VOICE) 907-465-6077, (Statewide Telecommunication Device for the Deaf) 1-800-478-3648,

(Juneau TDD) 907-465-3646, or (FAX) 907-465-6078

For information on alternative formats and questions on this publication, please contact:

ADF&G Division of Sport Fish, Research and Technical Services, 333 Raspberry Road, Anchorage AK 99518 (907) 267-2375.

TABLE OF CONTENTS

	Page
LIST OF TABLES.....	ii
LIST OF FIGURES.....	ii
LIST OF APPENDICES.....	iii
ABSTRACT.....	1
BACKGROUND.....	1
Guide and Business Registration and Licensing.....	1
Logbooks.....	2
Vessel Registration.....	5
METHODS.....	5
Guide and Business Licensing.....	5
Logbook Data Collection.....	6
Saltwater Logbook Forms.....	6
Freshwater Logbook Forms.....	7
Vessel Registration.....	8
Logbook Outreach, validation and Verification.....	9
Outreach.....	9
Validation.....	10
Verification.....	11
RESULTS.....	12
Guide and Business Licensing.....	12
Vessels.....	13
Saltwater.....	13
Freshwater.....	14
Trips.....	15
Saltwater.....	15
Freshwater.....	16
Logbook Trip Effort and Harvest.....	16
Saltwater.....	17
Freshwater.....	18
DISCUSSION.....	20
Guide and Business Licensing.....	20
Logbooks.....	20
ACKNOWLEDGEMENTS.....	21
REFERENCES CITED.....	22
APPENDIX A SPORT FISH BUSINESS OWNER/GUIDE LICENSE APPLICATION.....	23
APPENDIX B SALTWATER LOGBOOK FORM.....	27
APPENDIX C FRESHWATER LOGBOOK FORMS.....	31
APPENDIX D VESSEL REGISTRATION FORMS, DECALS AND TAGS.....	35
APPENDIX E SALTWATER EDITING RESULTS.....	41
APPENDIX F FRESHWATER EDITING RESULTS.....	43
APPENDIX G FRESHWATER LOGBOOK SUMMARIES BY AREA AND SITE.....	45
APPENDIX H SALTWATER LOGBOOK SUMMARIES BY AREA AND PORT OF OFFLOADING.....	67

LIST OF TABLES

Table		Page
1.	Division of Sport Fish regions and management areas.	3
2.	Number of licensed businesses and guides by region, 2008–2012.....	12
3.	Number of active saltwater businesses and guides by region, 2008–2012.....	13
4.	Number of active freshwater businesses and guides by region, 2008–2012.	13
5.	Number of registered and active saltwater vessels by region, 2008–2012.	14
6.	Number of active saltwater vessels that made at least one trip in each target category, by region, 2008–2012.....	14
7.	Number of registered freshwater vessels by year and region, 2008–2012.	15
8.	Number of saltwater trips by targeted species by region, 2008–2012.	15
9.	Number of freshwater trips by region, 2008–2012.....	16
10.	Saltwater and freshwater trips and angler days by region, 2008–2012.	16
11.	Saltwater salmon effort and harvest by region and angler type, 2012.....	17
12.	Saltwater bottomfish effort and harvest by species, region and angler type, 2012.....	18
13.	Freshwater effort and harvest by species, region and angler type, 2012.	19

LIST OF FIGURES

Figure		Page
1.	Map of Alaska and Division of Sport Fish regions and management areas.	4
2.	International Pacific Halibut Commission regulatory areas.	5

LIST OF APPENDICES

Appendix	Page
A1. Sport fish business owner/guide license application, 2012.....	24
B1. Saltwater charter logbook form, 2012.....	28
C1. Freshwater guide logbook from, 2012.....	32
D1. Saltwater sport fish charter logbook sign-out and vessel registration form, 2012.....	36
D2. Freshwater sport fish guide vessel registration form, 2012.....	37
D3. Vessel decal, 2012.....	38
D4. Vessel tab, 2012.....	39
E1. Saltwater editing results, 2012.....	42
F1. Freshwater editing results, 2012.....	44
G1. Freshwater logbook participation by area and site, Southeast Alaska, 2012.....	46
G2. Freshwater logbook participation by area and site, Southcentral Alaska, 2012.....	47
G3. Freshwater logbook participation by area and site, Arctic-Yukon-Kuskokwim Alaska, 2012.....	51
G4. Freshwater logbook participation by region, Statewide, 2012.....	52
G5. Freshwater logbook angler days and species kept by area and site, Southeast Alaska, 2012.....	53
G6. Freshwater logbook angler days and species kept by area and site, Southcentral Alaska, 2012.....	54
G7. Freshwater logbook angler days and species kept by area and site, Arctic-Yukon-Kuskokwim Alaska, 2012.....	58
G8. Freshwater logbook angler days and species kept by region, Statewide, 2012.....	59
G9. Freshwater logbook angler days and species released by area and site, Southeast Alaska, 2012.....	60
G10. Freshwater logbook angler days and species released by area and site, Southcentral Alaska, 2012.....	61
G11. Freshwater logbook angler days and species released by area and site, Arctic-Yukon-Kuskokwim Alaska, 2012.....	65
G12. Freshwater logbook angler days and species released by region, Statewide, 2012.....	66
H1. Saltwater logbook participation and effort by area and port of offloading, Southeast Alaska, 2012.....	68
H2. Saltwater logbook participation and effort by area and port of offloading, Southcentral Alaska, 2012.....	69
H3. Saltwater logbook participation and effort by region, statewide, 2012.....	70
H4. Saltwater logbook salmon participation, effort, kept and released by area and port of offloading, Southeast Alaska, 2012.....	71
H5. Saltwater logbook salmon participation, effort, kept and released by area and port of offloading, Southcentral Alaska, 2012.....	72
H6. Saltwater logbook salmon participation, effort, kept and released by region, statewide, 2012.....	73
H7. Saltwater logbook bottomfish participation, effort, kept and released by area and port of offloading, Southeast Alaska, 2012.....	74
H8. Saltwater logbook bottomfish participation, effort, kept and released by area and port of offloading, Southcentral Alaska, 2012.....	75
H9. Saltwater logbook bottomfish participation, effort, kept and released by region, statewide, 2012.....	76

ABSTRACT

In 2012, 1,263 sport fishing businesses and 2,844 guides were licensed under the Alaska Department of Fish and Game guide and business licensing program, signifying intent to provide sport fishing services in Alaska. Of the 1,263 sport fishing businesses registered in 2012, 1,132 were combination owner/guide licenses. Based on the 2012 physical addresses of both the businesses and guides, 87% of the businesses were residents of Alaska, and 13% were from other residency strata (defined as nonresidents), 67% of the guides were residents and 33% were nonresidents.

Of the 2,117 saltwater logbooks issued in 2012, 1,733 were activated, and of the 2,264 freshwater logbooks issued in 2012, 1,480 were activated. Of those businesses that submitted logbook information in 2012, 55% offered saltwater services, and 45% offered freshwater guided services. In 2012, logbook records show that 1,006 saltwater vessels were active. Of those active saltwater vessels, 59% were active in Southeast Alaska and 41% were active in Southcentral Alaska.

A total of 47,482 saltwater charter trips and 245,881 saltwater angler days of fishing occurred in 2012. Of the statewide saltwater trips, 81% of the saltwater angler days were nonresidents, 13% were residents and 6% were crew, comped fishing (nonpaying anglers) or unknown residency. In freshwater, 37,788 trips and 110,358 angler days occurred in 2012. Of the statewide freshwater trips, 90% of the angler days were nonresidents, 8% were residents, and 2% were crew, comped fishing or unknown residency.

2012 saltwater salmon harvests show that coho and king salmon made up 63% and 13% of the total salmon harvest respectively statewide. Saltwater bottomfish harvests in 2012 show that Pacific halibut were the predominant species with 54% of the total saltwater bottomfish harvest statewide. In freshwater, sockeye salmon were the predominant harvested species, followed by coho and then king salmon.

Key words: Sport fishing, guide and business registration, freshwater logbook, saltwater logbook, participation, effort, harvest, sport fishing vessel, Pacific halibut, salmon, bottomfish, Southeast Alaska, Southcentral Alaska

BACKGROUND

The Alaska Department of Fish and Game (ADF&G) Division of Sport Fish has operated a program to register and license both sport fishing guides and sport fishing guide businesses since 1998. Saltwater information on guided sport fishing participation, effort, and harvest has been collected since 1998. Freshwater guided information on fishing participation, effort and harvest has been collected since 2005, with summary information available since 2006 (Sigurdsson and Powers 2009–2012). This report briefly summarizes the approach, history, and results of this program for 2012.

GUIDE AND BUSINESS REGISTRATION AND LICENSING

The activities of the guided sport fishing industry in Alaska have remained steady after a drop in 2009 with implications to fish allocation and management decisions. Resolution of allocation and management issues was hampered by a lack of information regarding the industry and its impact on fishery resources in many parts of Alaska. The sport fishing guide and business registration and licensing programs were designed to provide a comprehensive system to better define this diverse industry throughout Alaska. A brief history of the statewide registration and licensing process follows.

Beginning in May 1995 the owner(s) of any business that engaged in sport fish guiding of anglers anywhere in Alaska were required to register their business information, employees acting as sport fishing guides for the business, and list all vessels used for guiding. In 1997, sport fishing guides were required to register and provide information about the employing business (Dean 2001; Dean and Howe 1999).

In 1998, the Alaska Board of Fisheries (BOF) adopted new statewide sport fishing guide registration regulations and definitions during their February Statewide Finfish meeting in Girdwood, Alaska (5 AAC 75.075: *Sport Fishing Services and Sport Fishing Guide Services; License Requirements; Regulations of Activities*). It should be stressed that this was a registration process, not a licensing process. No fees were required and businesses and guides were allowed to provide services in any area of the state, assuming other regulatory requirements were met. In 1998, ADF&G continued to register guide businesses and guides, but stopped registering charter vessels, because the Commercial Fisheries Entry Commission implemented a licensing program for all vessels to be used for guided sport fishing. From 1998 through 2004, ADF&G continued to register sport fishing businesses and sport fishing guides.

On May 11, 2004, the Alaska Legislature adopted House Bill 452 (HB 452), that established licensing requirements for sport fishing guide business owners and sport fishing guides on a statewide basis. This bill was created to establish minimum professional standards required of both freshwater and saltwater sport fish guides and business owners before a license could be obtained. The standards were established to protect consumers and to promote the viability and legitimacy of a professional sport fish guide industry. Businesses providing sport fish guided services were now required to obtain a State of Alaska Occupational Business License and hold liability insurance with a minimum of \$300,000 coverage for all incidents in a year (AS 16.40.260). Licensed sport fishing guides were required (1) to be citizens of the United States, Canada, or Mexico, (2) hold a current first aid card, (3) have a current year Alaska sport fishing license and (4) have a valid U.S. Coast Guard operator's license if they were to operate a motorized vessel in navigable waters. License application forms and the information collected have remained consistent in design since 2006.

LOGBOOKS

In February, 1998 the BOF adopted regulations (5 AAC 75.076) requiring logbooks for saltwater charter vessels statewide. Information on the amounts and locations of charter activity and actual participation and harvest by individual vessels and businesses was needed by the BOF for allocation and management of Chinook salmon *Oncorhynchus tshawytscha*, rockfish *Sebastes* spp., and lingcod *Ophiodon elongatus*, and by the North Pacific Fisheries Management Council (NPFMC) for allocation of Pacific halibut *Hippoglossus stenolepis*. To meet these information needs ADF&G implemented a saltwater sport fishing charter vessel logbook program for Division of Sport Fish Region I, Southeast Alaska (Southeast), and Region II, Southcentral Alaska (Southcentral; Table 1; Figure 1).

In 1999, the NPFMC was considering proposals to limit the guided sport halibut harvest. Their concerns were: (1) that growth in this fishery was reallocating resources away from the individual fishing quota commercial longline fishery, and (2) that in some areas there was overcapitalization and localized depletion of the halibut resource. NPFMC endorsed a two-prong approach to resolve the perceived impact of increased guided charter halibut fishing. The first was establishment of guideline harvest limits for International Pacific Halibut Commission (IPHC) Areas 2C and 3A (Figure 2), and the second was a process to establish local area management plans for halibut fisheries in coastal communities.

Since 1998, the logbook design has undergone annual revisions, driven primarily by changes or improvements in the collection of halibut, lingcod and rockfish data through the logbook program, Statewide Harvest Survey, and expanded port sampling programs. House Bill 452,

adopted in 2004, not only established new licensing requirements, but also established a logbook reporting requirement for all freshwater businesses in addition to the existing saltwater reporting requirements. For various reasons, both technical and policy-based, information on halibut harvests was not collected from 2002 through 2005. The collection of halibut data was resumed in 2006. In addition, the 2006 logbook was redesigned to require reporting of angler license numbers and the harvest and release numbers by angler in an effort to improve reporting and facilitate evaluation of the quality of logbook data.

The data from logbooks are compiled to show where fishing effort occurs, the extent of participation, and the species and numbers of fish kept and released by individual clients. This information is used for regulation decisions and the development and management of fisheries, for project evaluation, and for formulation of department policies and priorities that reflect angler needs, concerns, and preferences. It also provides ADF&G with a tool to promote management of Alaska's resources for sustained yield.

Table 1.—Division of Sport Fish regions and management areas.

Regions	
SE	Southeast Alaska
SC	Southcentral Alaska
AYK	Arctic-Yukon-Kuskokwim
Areas	
Southeast Alaska	
A	Ketchikan
B	Prince of Wales Island
C	Kake, Petersburg, Wrangell, Stikine
D	Sitka
E	Juneau
F	Haines-Skagway
G	Glacier Bay
H	Yakutat
Southcentral Alaska	
J	North Gulf Coast/Prince William Sound
K	Knik Arm Drainage
L	Anchorage
M	Susitna River Drainage
N	West Side Cook Inlet
P	Kenai Peninsula
Q	Kodiak
R	Naknek River Drainage/Alaska Peninsula Area
S	Kvichak River Drainage
T	Nushagak, Wood River and Togiak
Arctic-Yukon-Kuskokwim	
I	Upper Copper River Drainage
U	Tanana River Drainage
V	Kuskokwim River/Kuskokwim Bay Drainages
W	Norton Sound/Seward Peninsula
X	Northwest Alaska
Y	Yukon River Drainage
Z	North Slope/Brooks Range



Figure 1.—Map of Alaska and Division of Sport Fish regions and management areas.

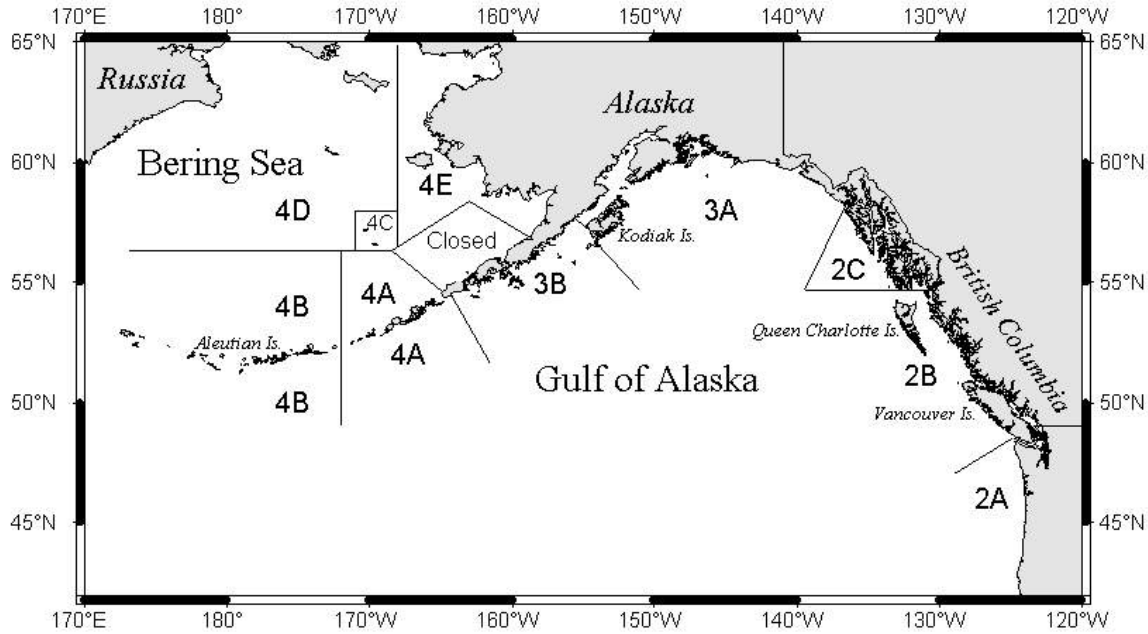


Figure 2.—International Pacific Halibut Commission (IPHC) regulatory areas.

Currently, a logbook record is required for every chartered or guided trip taken with clients, defined as an outing with one group of clients that ends when the clients and their fish (if fish were kept) are offloaded. Each trip is associated with an individual licensed business and guide.

VESSEL REGISTRATION

In addition to establishing a licensing program and statewide freshwater logbook requirement, HB 452 included establishment of a vessel registration program to be conducted by ADF&G as part of the logbook program to monitor the number of vessels used in the guided marine and freshwater fisheries. All guide industry boats used in marine or freshwater are referred to as “charter or guide boats” regardless of their size or the manner in which they are used. All vessels used in the charter guide industry were required to be registered with ADF&G.

METHODS

GUIDE AND BUSINESS LICENSING

Businesses and guides can be licensed to provide sport fishing guided services if they meet the minimum qualifications specified in regulation (AS 16.40.260 and AS 16.40.270).

Beginning in 2006, each January the Division of Sport Fish mailed renewal license applications to each sport fishing guide and sport fishing business that was licensed in the previous year. In addition, guides and businesses could obtain a license in person at local ADF&G offices or through the Internet.

The license application could be used in three ways (Appendix A):

- To license a business only.
- To license a guide only.
- To license a combination business and guide (an owner/operator where the owner also conducted the guiding).

The license application collected business owner or guide name, permanent mailing information, permanent and inseason phone number if applicable. Additionally, the name of the business, name of the business owner, occupational business license number, insurance company information and insurance binder or policy number and effective dates were required. Guide information is collected on citizenship; a guide must be a citizen of the United States, Canada, or Mexico. Additional information collected includes current first aid status and the number of the current year Alaska sport fishing license along with any tags or permits required for specific fisheries. If a guide planned to operate a motorized vessel on navigable waters with clients on board, the guide was required to have a current U.S. Coast Guard Operator's License and provide that number and expiration date on the license application.

Unique license numbers were assigned according to how licensing occurred. License numbers did not remain the same in subsequent years. If an operator or guide licensed at an ADF&G office, a pre-numbered application was used and that number became the license number for that year. Renewal or internet license applications are numbered sequentially by the computer database that processed the information

Once the license applications were reviewed for completeness and accuracy, Division of Sport Fish mailed a wallet-sized license to each guide or business. Those applicants who licensed by going to an ADF&G office received a copy of their license, which allowed them to operate immediately. Those who applied on the Internet or with the renewal application, were required to wait until they received their license in the mail prior to operating or providing guiding services.

LOGBOOK DATA COLLECTION

Logbook reporting is a mandatory process governed by regulation (AS 16.40.280). As such, the reporting process was considered to be a census of all charter/guided trips. Logbooks were available and issued from ADF&G area offices located statewide, in addition to a vendor located in Seward.

The statewide logbook has remained consistent in design since 2006, with few annual changes occurring in logbook layout. In 2006, both the freshwater and saltwater logbooks were redesigned to require reporting of angler license numbers and the harvest and release numbers by individual angler in an effort to improve reporting and facilitate evaluation of the quality of logbook data. Annual design changes in the saltwater logbook were driven primarily by changes or improvements in the collection of halibut and rockfish data, and by requests from the NPFMC for information needed for allocation of halibut. Other changes were made to improve or simplify the use of the forms based on operator input, and to improve the collection of client and crew harvest information.

In 2011, ADF&G worked collaboratively with National Marine Fisheries Service (NMFS) to modify the logbook requirements associated with the federal Charter Halibut Permit (CHP) program, a program that establishes limited access to the guided halibut fishery. The 2011 saltwater logbook was designed to capture CHP numbers associated with the permits granted by the NMFS to qualifying participants in the sport fish charter halibut fishery.

Saltwater Logbook

A saltwater logbook consisted of the cover page, schedule of reporting deadlines, one logbook sign out sheet to show the business to which the logbook was issued and to register the saltwater

vessel, a set of instructions for filling out the information on the logbook sheets, and 50 data sheets to record trip information (Appendix B). Data collected on each of the 50 pages consisted of:

- Date that fishing took place.
- Time that trip ended.
- ADF&G guide license number for the guide leading the trip.
- CHP Number.
- Primary statistical area fished while targeting salmon or bottomfish.
- Number of Hours fished.
- Port or community where trip ended.
- Crew, client, and “comped” angler’s current ADF&G sport fishing license or PID (permanent fishing license) number, the word “YOUTH” for anglers under 16.
- First and last name of each client and youth angler.
- Client residency (Alaska resident/nonresident of Alaska).
- Indication if angler was a crew member or if angler was “comped.”
- Signature of angler who kept halibut while fishing in IPHC area 2C only (Southeast).
- A breakdown by fish species kept and released by each individual angler.

During a saltwater charter trip, the operator must decide if his/her gear or fishing methods are effectively targeting bottomfish, salmon or both. A 6-digit statistical code where most of the fish were caught or targeted is logged for each trip. Statistical maps were provided to the operator upon logbook issuance.

Saltwater species information collected included kept and released information for “large” Chinook (king salmon) 28” and longer and for “small” Chinook (king salmon) less than 28”. Also recorded were coho *O. kisutch*, sockeye *O. nerka*, halibut, lingcod, pelagic rockfish, yelloweye, and other nonpelagic rockfish, salmon shark *Lamna ditropis* and sablefish *Anoplopoma fimbria*.

To determine the number of businesses and guides that were “active” in the industry, a cross reference of business and guide licenses is made to the logbook check out sheet and logbook data sheets. If ADF&G received at least one logbook data page that reported targeted effort with paying clients, the charter operator turning in the form was considered an “active” bottomfish or salmon charter operator with an “active” vessel.

Freshwater Logbook

A freshwater logbook consisted of the cover page, schedule of reporting deadlines, one logbook sign out sheet to show the business to which the logbook was issued, a freshwater vessel registration page that collects the unique Alaska Vessel number (AK #) assigned by the Division of Motor Vehicles (DMV) or a United States Coast Guard (USCG) documentation number and primary drainage, a set of instructions for filling out the information on the logbook sheets, and 50 data sheets to record trip information (Appendix C). Data collected on each of the 50 pages consisted of:

- ADF&G guide license number for the guide leading the trip.

- Date that fishing took place.
- Specific name of river, stream or lake fished.
- Site code of site fished as referenced within a list provided with each logbook.
- Number of logbook pages used for a specific trip.
- Name of any other species kept or released.
- Crew, client, and “comped” angler’s current ADF&G sport fishing license number, and a youth angler designation for anglers under 16 years of age.
- Client residency.
- Indication if angler was a crew member or if angler was “comped.”
- A breakdown by fish species kept and released by each individual angler.

Upon acquiring a freshwater logbook, the operator registers all vessels that may be used during the course of the fishing season. Freshwater vessel registration requires that the vessel already have a unique AK # assigned by DMV or a USCG documentation number. Freshwater vessels primarily have AK #'s. The operator must provide the AK # and indicate the primary freshwater drainage where the vessel will operate.

The freshwater logbook does not collect targeted species information like the saltwater logbook, it collects information on species kept and released regardless of what was targeted. A trip is counted if a logbook data page is submitted with paying client information regardless of catch. Freshwater trips are assigned to a region of the state based on the name of the site fished, each freshwater site is assigned a unique regional alpha code followed by a numeric code within the region in which it is located (Table 1).

Freshwater information collected were: kept and released numbers for king, coho, and sockeye salmon, cutthroat *O. clarkii*, rainbow and steelhead trout *O. mykiss*, lake trout *Salvelinus namaycush*, Dolly Varden *S. malma*, Arctic grayling *Thymallus arcticus*, northern pike *Esox lucius*, sheefish *Stenodus leucichthys* and a category for the number of all other fish not already listed.

Business operators are allowed to and even encouraged to pick up as many logbooks as they anticipated needing during the course of the season. The ability to acquire as many logbooks as are needed prevents them from having to make multiple trips to an ADF&G office. As a result, numerous businesses ended up getting more logbooks than were eventually used. Because of this, ADF&G differentiates between the number of logbooks issued versus the number that are actually used or activated.

Vessel Registration

Vessel registration information was collected when a saltwater or freshwater logbook was issued to a business (Appendices D1 and D2). Registration information included the DMV AK# or the U.S. Coast Guard vessel documentation number. Upon completion of vessel registration with ADF&G, each vessel was provided with two decals and year tags to indicate that the vessel is to be used in the guide industry (Appendices D3 and D4). Decals must be applied and visible on both sides of the vessel.

LOGBOOK OUTREACH, VALIDATION AND VERIFICATION

In December 2005, the Commissioner of the ADF&G issued a statement that mandated and detailed strategies for assuring the accuracy of the reporting of Pacific halibut harvest for the saltwater charter logbook through outreach and validation.

Outreach

An outreach program was initiated to reach as many operators as possible to field questions and to ensure compliance with the reporting requirements. The outreach program was conducted on-site (in the field) by ADF&G employees and off-site from the Anchorage ADF&G office.

On-site Logbook Inspections

Logbook outreach occurred in parts of the Southeast and Southcentral regions in conjunction with existing creel survey and port sampling programs. “Courtesy logbook inspections” were conducted as time allowed by ADF&G creel and port sampling technicians during their regular dockside checks of the primary fisheries from May through September. In addition, management staff continued with periodic checks of charter logbooks while in the field. Logbooks were inspected to make sure that they were filled out correctly, and staff answered any questions about how they should be filled out. These checks were not intended for enforcement or for evaluating the accuracy of data but rather as another opportunity to encourage compliance and completeness and as an indicator of how important logbook data are to ADF&G.

Off-site Logbook Review

The goal of the outreach program was to ensure compliance with all reporting requirements, by emphasizing education early in the season. Off-site outreach was conducted by the Division of Sport Fish, Research and Technical Services (RTS) staff in the Anchorage office. All logbook trip data was subject to a reporting deadline. Logbook data pages were required to be completed and returned to ADF&G on a weekly basis as specified in the instructions of both the saltwater and freshwater logbooks. Timely submission was a requirement to facilitate recall and to allow ADF&G staff to review each data page for completeness and legibility. All logbook data sheets were received by RTS in Anchorage where ADF&G data entry staff date-stamped each data page with the date received, reviewed each page for incomplete, illegible or erroneous information, and conducted phone calls to business owners and guides for follow up and clarification. Calls early in the season were intended to alleviate repeat errors in reporting which were thought to result in fewer calls being necessary later in the fishing season.

As logbook data sheets were received, RTS staff conducted reviews by monitoring all data for completion and legibility prior to data entry. In the event that some of the logbook data sheets required clarification from the operator or guide, staff would place phone calls.

Phone calls to the business owners and guides significantly improved the quality of the data, minimized reoccurring mistakes by the guide, increased compliance, and contributed to the outreach portion of this program. Logbook data entry staff contacted charter operators to resolve logbook reporting issues and to improve future reporting. These calls were intended to improve data quality and reinforce the message to the guide industry that logbook data are important and are consistently being reviewed.

Number of follow-up calls to Operators by year.				
2008	2009	2010	2011	2012
2,160	780	830	651	829

Follow up phone calls have become a valuable outreach tool and will continue to be a standard procedure in the future.

Validation

In-season Saltwater Logbook Editing

Computer routines have been written to check and validate the following saltwater data fields during the fishing season as logbook data pages are returned:

- Validate the guide license is filled in and valid.
- Validate the date is filled in and in the year 2012.
- Validate the port of landing is entered and is in the valid port site table.
- If hours are listed verify a statistical area is listed for the appropriate effort.
- Verify the statistical area listed is a valid statistical area.
- If there is harvest verify the appropriate statistical area is filled in.
- If a statistical area is filled out verify the appropriate hours field is filled in.
- Verify a statistical area is filled in (both can't be blank).
- Verify hours are filled in (both can't be blank).
- Validate possible incorrect stat areas that appear to be valid;
 - If data entry mistakenly enters the hours info in the statistical area the first statistical area that starts with the same number will be auto populated and accepted as valid.
- Check to see which log pages were turned in more than 7 days after the due date.
- Verify logbooks are checked out to a business and not a guide.
- Check all records with more than 12 hours listed.
- Check for duplicate logbook pages.
- Check trips that don't have paying angler records.
- Verify the date fished is not greater than the date the log page is received by ADF&G.

Post-season Saltwater Logbook Editing

At the end of the fishing season, computer routines check and validate the above listed items in addition to the following saltwater data fields in preparation for developing summaries (Appendix E).

- All of the in-season edits are re-run.
- Check to make sure fish kept are within the limits for the area fished.
- Validate and review excessively large numbers of released fish based on frequency distribution analysis.

In-season Freshwater Logbook Editing

Computer routines have been written to check and validate the following freshwater data fields during the fishing season as logbook data pages are returned.

- Validate the guide license number is filled in and valid.
- Validate the date is filled in and in the year 2012.
- Validate the site code is entered and is in the valid site code table.
- Check to make sure there are paying clients (not comped or crew) on the trip.
- Check to see which log pages were turned in more than 7 days after the due date.
- Check for duplicate logbook pages.
- Verify the date fished is not greater than the date the log page is received by ADF&G.
- Verify logbooks are checked out to a business and not a guide.
- Verify Kenai River trips weren't taken on Sunday or Monday in May – July.
- Check trip records that don't have angler records.

Post-season Freshwater Logbook Editing

At the end of the fishing season, computer routines check and validate the above listed items in addition to the following freshwater data fields in preparation for developing summaries (Appendix F).

- All of the in-season edits are re-run.
- Check to make sure fish kept are within the limits for the site fished.
- Check to make sure the fish caught are valid species for the site fished.
- Validate excessively large numbers of released fish based on frequency distribution analysis.
- Recode “Other” site codes to correct values if they exist in the site code table.
- Recode sites with “System” in the description to a more specific site code if available.
- Check records with 6 clients to verify the next page isn't part of the same trip.

Verification

Logbook data were compared to actual counts of harvested fish (verified) and to reported harvest data (unverified) from onsite interviews. These comparisons are ongoing and are part of a more comprehensive evaluation of logbook data quality (Meyer and Powers, 2010, unpublished data).

Three unique methods will be used to conduct post-season verification of logbook data:

1. A freshwater and saltwater comparison will be made between logbook data and guided trip information collected from the Alaska Statewide Harvest Survey (Jennings et al. 2011).
2. A freshwater comparison will be made between logbook data and onsite interview data for the Situk River.
3. The data collected from the logbooks was compared to the data collected in the saltwater creel programs administered through ADF&G. Saltwater creel programs include the *Assessment of Recreational Halibut and Groundfish Harvest in Southcentral Alaska* program in Homer, *Haines Marine Sport Fishery Harvest in Southeast Alaska* (Chapell 2010), and *Harvest estimates for selected marine sport fisheries in Southeast Alaska* (Wendt and Jaenicke *In prep*).

RESULTS

GUIDE AND BUSINESS LICENSING

In 2012, ADF&G received license applications from 1,263 sport fishing businesses and 2,844 sport fishing guides licensed with the intent to provide sport fishing services in Alaska. The total number of businesses and guides includes saltwater and freshwater operators. Of the 1,263 sport fishing businesses licensed in 2012, 1,132 were combination owner/guide licenses. Physical addresses of both the businesses and guides in 2012 indicated that 87% of the businesses reported Alaska residency, and 13% were from other residency strata (defined as nonresidents), 67% of the guides were residents and 33% were nonresidents.

The licensed businesses and guides were subtotaled by region of residency for Southeast, Southcentral, and Other Alaska, including the Arctic-Yukon-Kuskokwim area and nonresident. In 2012, those with a physical address in Southeast comprised 26% of the total licensed businesses, 57% were in Southcentral, 4% had permanent addresses in other parts of Alaska, and 13% had nonresident addresses based on their license applications. In 2012, of those that licensed as guides only, 13% had permanent addresses in Southeast, 36% in Southcentral, 4% in other parts of Alaska and 47% had nonresident addresses based on their license applications (Table 2).

Table 2.—Number of licensed businesses and guides by region, 2008–2012.

Licensed Businesses ^a					
Region ^b	2008	2009	2010	2011	2012
Southeast	43	34	32	43	36
Southcentral	66	65	68	64	64
Other Alaska	2	2	4	2	4
Resident Total	111	101	104	109	104
Other U.S.	23	21	25	26	27
Foreign	0	0	0	0	0
Nonresident Total	23	21	25	26	27
Total	134	122	129	135	131
Combination Licenses ^c					
Southeast	414	371	351	313	288
Southcentral	887	812	764	726	656
Other Alaska	75	68	62	62	50
Resident Total	1,376	1,251	1,177	1,101	994
Other U.S.	149	155	146	135	138
Foreign	0	0	0	0	0
Nonresident Total	149	155	146	135	138
Total	1,525	1,406	1,323	1,236	1,132
Licensed Guides ^d					
Southeast	319	272	269	269	228
Southcentral	765	678	662	623	614
Other Alaska	80	87	78	85	72
Resident Total	1,164	1,037	1,009	977	914
Other U.S.	831	705	702	747	798
Foreign	2	1	0	0	0
Nonresident Total	833	706	702	747	798
Total	1,997	1,743	1,711	1,724	1,712

Note: Data are current as of 04/24/2013; does not include duplicate licenses.

^a Business-only licenses that do not include the owner as a guide.

^b Region assigned based on physical address indicated at time of licensing.

^c Combination licenses that include the business and the business owner as the guide.

^d Guide license only, no business license.

Based on the submission of logbook data pages with trip information in 2012, data indicated that saltwater services were provided by 621 businesses, 504 provided freshwater services. These totals include 94 businesses that provided both freshwater and saltwater services (Tables 3 and 4).

Table 3.–Number of active saltwater businesses and guides by region, 2008–2012.

Region ^c	Active Businesses ^a					Active Guides ^b				
	2008	2009	2010	2011	2012	2008	2009	2010	2011	2012
Southeast	429	387	373	341	324	860	738	730	673	692
Southcentral	459	416	403	345	302	739	661	633	571	539
Total ^d	888	802	776	686	621	1,561	1,355	1,325	1,222	1,198

Note: Data are current as of 04/24/2013.

^a Active Business counts are based on the business number listed on the sign-out sheet of a logbook (this can be a business only or a combination business/guide license) and the submission of at least one log page from the logbook.

^b Active Guide counts are based on the guide number written on each log page (this can be a guide only or a combination business/guide license) and the submission of at least one log page showing that guide license number.

^c Region is based on the port of offloading, salmon and bottomfish statistical areas.

^d Total is not additive because a business or guide could operate in both regions. Includes businesses and guides that offered both saltwater and freshwater services.

Table 4.–Number of active freshwater businesses and guides by region, 2008–2012.

Region ^c	Active Businesses ^a					Active Guides ^b				
	2008	2009	2010	2011	2012	2008	2009	2010	2011	2012
Southeast	70	63	69	68	63	178	143	151	159	160
Southcentral	512	476	433	431	407	1,293	1,087	1,042	1,045	1,012
Arctic Yukon-Kuskokwim	69	67	62	61	53	222	203	200	218	198
Total ^d	630	586	546	537	504	1,625	1,372	1,339	1,350	1,300

Note: Data are current as of 04/24/2013.

^a Active Business counts are based on the business number listed on the sign-out sheet of a logbook (this can be a business only or a combination business/guide license) and the submission of at least one log page from the logbook.

^b Active Guide counts are based on the guide number written on each log page (this can be a guide only or a combination business/guide license) and the submission of at least one log page showing that guide license number.

^c Region is based on the site code provided for the site fished on each logbook page.

^d Total is not additive because a business or guide could operate in multiple regions. Includes businesses and guides that offered both saltwater and freshwater services.

VESSELS

Saltwater

Of the 1,185 registered saltwater vessels in 2012, 1,006 were actually active. Based on the port of offloading, 595 saltwater vessels operated in Southeast and 417 operated in Southcentral in 2012, the lowest numbers recorded in the last five years (Table 5).

Table 5.–Number of registered and active saltwater vessels by region, 2008–2012.

Region ^a	Registered Vessels					Active Vessels				
	2008	2009	2010	2011	2012	2008	2009	2010	2011	2012
Southeast	905	807	778	716	690	757	670	644	610	595
Southcentral	697	637	611	543	497	596	547	528	469	417
Total ^b	1,601	1,444	1,389	1,259	1,185	1,353	1,216	1,172	1,079	1,006

Note: Data are current as of 04/24/2013.

^a Region for registered vessels is based on primary port of operation listed on the sign-out sheet; for active vessels region is based on primary port of offloading, salmon and bottomfish statistical areas.

^b Total is not be additive because a vessel could be registered or active in both regions.

Logbook data indicate that vessels will target all possible species; bottomfish, salmon and both during the course of a fishing season (Table 6).

Table 6.–Number of active saltwater vessels that made at least one trip in each target category, by region, 2008–2012.

Year	Region ^b	Target ^a			
		Salmon	Bottomfish	Both	No Stat Area
2008	Southeast	622	534	648	55
	Southcentral	325	546	441	22
	Total	947	1,080	1,089	77
2009	Southeast	538	417	586	27
	Southcentral	269	497	402	17
	Total	807	914	988	44
2010	Southeast	514	401	567	63
	Southcentral	245	476	385	43
	Total	759	877	952	106
2011	Southeast	522	287	505	40
	Southcentral	257	419	358	38
	Total	779	706	863	78
2012	Southeast	483	331	505	43
	Southcentral	204	383	303	22
	Total	687	714	808	65

Note: Data are current as of 04/24/2013.

^a Target is based on salmon and bottomfish statistical areas.

^b Region is based on the port of offloading, salmon and bottomfish statistical areas.

Freshwater

Based on the primary drainage and sites fished, many more freshwater vessels registered in Southcentral than in other regions between 2008 and 2012 (Table 7).

Table 7.—Number of registered freshwater vessels by year and region, 2008–2012.

Year	Southeast	Southcentral	Arctic-Yukon-Kuskokwim	Unknown ^a	Total ^b
2008	123	1,743	263	0	2,128
2009	97	1,650	230	0	1,976
2010	96	1,615	198	3	1,911
2011	91	1,585	244	1	1,920
2012	85	1,535	236	0	1,854

Note: Data are current as of 04/24/2013.

^a Insufficient information available during registration and on fishing activity.

^b Total may not be additive because a vessel could be registered in more than one region.

TRIPS

Saltwater

Logbook data indicate that 47,482 saltwater charter trips were conducted statewide in 2012. During the past five years, a majority of the trips that targeted salmon only, occurred in Southeast Alaska, whereas, the majority of trips that targeted bottomfish only, occurred in Southcentral Alaska. During the same five years, operators in Southeast conducted significantly more trips in which both salmon and bottomfish were targeted on the same trip. If a statistical area fished was not provided or indicated, no targeted species was assigned (Table 8).

Table 8.—Number of saltwater trips by targeted species by region, 2008–2012.

Year	Region ^b	Species Targeted ^a			No Stat Area	Total
		Salmon	Bottomfish	Both		
2008	Southeast	11,338	7,368	18,634	108	37,448
	Southcentral	2,135	15,733	6,617	72	24,557
	Total	13,473	23,101	25,251	180	62,005
2009	Southeast	8,789	4,842	14,498	45	28,174
	Southcentral	2,008	12,604	5,699	21	20,332
	Total	10,797	17,446	20,197	66	48,506
2010	Southeast	7,613	5,369	14,740	99	27,821
	Southcentral	2,026	13,225	5,593	88	20,932
	Total	9,639	18,594	20,333	187	48,753
2011	Southeast	8,687	3,465	16,056	79	28,287
	Southcentral	2,057	12,093	5,987	67	20,204
	Total	10,744	15,558	22,043	146	48,491
2012	Southeast	8,276	4,786	15,234	60	28,356
	Southcentral	1,555	12,964	4,560	47	19,126
	Total	9,831	17,750	19,794	107	47,482

Note: Data are current as of 04/24/2013.

^a Species targeted is based on the provision of salmon and/or bottomfish statistical area.

^b Region is based on the port of offloading, salmon and bottomfish statistical areas.

Freshwater

In 2012, 37,788 freshwater trips were conducted statewide, 81% of those trips took place in Southcentral, 12% in the Arctic-Yukon-Kuskokwim (AYK) area, and 7% in Southeast (Table 9).

Table 9.—Number of freshwater trips by region, 2008–2012.

Year	Southeast	Southcentral	Arctic-Yukon-Kuskokwim	Total
2008	3,113	40,587	4,801	48,501
2009	2,400	31,305	3,849	37,554
2010	2,456	31,267	4,065	37,788
2011	2,430	33,131	4,569	40,130
2012	2,672	30,769	4,347	37,788

Note: Region is based on the area code of the site code listed on each logbook page. Data are current as of 04/24/2013.

LOGBOOK TRIP EFFORT AND HARVEST

Statewide saltwater charter trips decreased significantly in 2009 from 2008 (Table 10). Saltwater angler days and trips continue to remain steady between 2009 to 2012 after a drop between 2008 and 2009 (Table 10). Freshwater trips show a similar pattern to saltwater trips with a significant decrease between 2008 and 2009 and then the numbers remain relatively steady except for a slight increase in 2011 (Table 10).

Table 10.—Saltwater and freshwater trips and angler days by region, 2008–2012.

Year	Region	Saltwater ^a		Freshwater ^b	
		Trips	Angler Days	Trips	Angler Days
2008	Southeast	37,448	150,789	3,113	10,730
	Southcentral	24,557	146,717	40,587	126,596
	Arctic-Yukon-Kuskokwim	0	0	4,801	11,833
	Total	62,005	297,506	48,501	149,159
2009	Southeast	28,174	110,285	2,400	8,066
	Southcentral	20,332	119,611	31,305	94,387
	Arctic-Yukon-Kuskokwim	0	0	3,849	8,909
	Total	48,506	229,896	37,554	111,362
2010	Southeast	27,821	110,915	2,456	8,898
	Southcentral	20,932	135,170	31,267	94,910
	Arctic-Yukon-Kuskokwim	0	0	4,065	9,416
	Total	48,753	246,085	37,788	113,224
2011	Southeast	28,287	111,120	2,430	8,885
	Southcentral	20,204	135,249	33,131	99,661
	Arctic-Yukon-Kuskokwim	0	0	4,569	10,750
	Total	48,491	246,369	40,130	119,296
2012	Southeast	28,356	112,598	2,672	9,924
	Southcentral	19,126	133,283	30,770	90,453
	Arctic-Yukon-Kuskokwim	0	0	4,346	9,981
	Total	47,482	245,881	37,788	110,358

Note: Data are current as of 04/24/2013.

^a Saltwater region is based on the port of offloading, salmon and bottomfish statistical areas.

^b Freshwater region is based on the area code of the site code listed on each logbook page.

SALTWATER

In 2012, 82% of the saltwater logbooks that were issued were activated (effort or catch reported). From 2007 through 2011, the saltwater logbook collected information on client residency. In 2012, records show that 88% of the angler days of effort in the saltwater charter salmon fishery were conducted by nonresident anglers, compared with 8% by residents and 4% by crew, comped anglers or those of unknown residency. In 2012, records also indicate that 79% of the angler days of effort in the saltwater charter bottomfish fishery were conducted by nonresident anglers, 14% by residents and 7% by crew fishing, comped anglers or those of unknown residency (Tables 11–12).

In 2012, of the total number of angler days fished, 69% of the salmon participation took place in Southeast, and 31% in Southcentral. In 2012 coho and king salmon made up 63% and 13% respectively of the harvest statewide, with the remaining 24% consisting of a combination of other salmon (Table 11).

Within that same period, 40% of the bottomfish participation took place in Southeast, and 60% occurred in Southcentral (Table 12).

Of the bottomfish harvested in 2012, halibut were the most harvested species at 266,665 fish, making up 54% of the total bottomfish harvest statewide. Statewide, 21% of the halibut harvest occurred in Southeast and 79% occurred in Southcentral (Table 12). It should be noted that in Southeast, IPHC area 2C, anglers fishing from a charter vessel were limited to one halibut per day, whereas in Southcentral, IPHC area 3A, guided anglers were allowed two halibut per day in 2012.

Table 11.—Saltwater salmon effort and harvest by region and angler type, 2012.

Region ^a	Type of Angler	Angler Days ^b	King		Coho	Sockeye	Other Salmon
			Large ^c	Small ^c			
Southeast	Resident	1,662	857	22	2,406	49	393
	Non-Resident	90,646	25,516	865	128,722	941	51,033
	Comped	271	130	0	306	1	80
	Crew	1,027	10	0	1,372	30	354
	Unknown	488	61	6	444	1	377
	Total	94,094	26,574	893	133,250	1,022	52,237
Southcentral	Resident	9,500	706	193	6,056	152	1,090
	Non-Resident	28,756	3,580	1,155	24,728	1,219	6,123
	Comped	302	19	14	132	0	26
	Crew	3,472	199	94	1,152	119	183
	Unknown	183	15	1	163	0	37
	Total	42,213	4,519	1,457	32,231	1,490	7,459
Total	Resident	11,162	1,563	215	8,462	201	1,483
	Non-Resident	119,402	29,096	2,020	153,450	2,160	57,156
	Comped	573	149	14	438	1	106
	Crew	4,499	209	94	2,524	149	537
	Unknown	671	76	7	607	1	414
	Total	136,307	31,093	2,350	165,481	2,512	59,696

Note: Data are current as of 04/24/2013.

^a Region is based on the port of offloading, salmon and bottomfish statistical areas.

^b Angler days totals all anglers who fished on a day when a salmon statistical area was entered, plus angler days where an angler harvested a salmon when a bottomfish statistical area was provided.

^c Large king salmon are 28 inches or longer; small are under 28 inches.

Table 12.—Saltwater bottomfish effort and harvest by species, region and angler type, 2012.

Region ^a	Type of Angler	Angler Days ^b	Rockfish						
			Halibut	Lingcod	Pelagic	Yelloweye	Non-Pelagic	Sablefish	Shark
Southeast	Resident	1,489	944	251	880	201	413	31	0
	Non-Resident	81,235	54,175	6,342	78,469	11,292	27,375	5,121	11
	Comped	320	197	48	320	49	96	23	0
	Crew	1,080	114	6	557	5	10	3	0
	Unknown	360	172	15	170	37	82	6	0
	Total	84,484	55,602	6,662	80,396	11,584	27,976	5,184	11
Southcentral	Resident	28,072	47,032	2,723	12,802	2,447	1,948	51	0
	Non-Resident	87,050	146,360	9,315	43,980	6,855	5,574	387	10
	Comped	856	1,353	63	449	55	49	0	0
	Crew	10,915	15,640	540	3,371	538	329	4	0
	Unknown	445	678	38	222	20	50	0	0
	Total	127,338	211,063	12,679	60,824	9,915	7,950	442	10
Total	Resident	29,561	47,976	2,974	13,682	2,648	2,361	82	0
	Non-Resident	168,285	200,535	15,657	122,449	18,147	32,949	5,508	21
	Comped	1,176	1,550	111	769	104	145	23	0
	Crew	11,995	15,754	546	3,928	543	339	7	0
	Unknown	805	850	53	392	57	132	6	0
	Total	211,822	266,665	19,341	141,220	21,499	35,926	5,626	21

Note: Data are current as of 04/24/2013.

^a Region is based on the port of offloading, bottomfish and salmon statistical areas.

^b Angler days totals all anglers who fished on a day when a bottomfish statistical area was entered, plus angler days where an angler harvested a bottomfish when a salmon statistical area was provided.

FRESHWATER

In 2012, of all issued freshwater logbooks, 65% were activated. Records indicate that 9% of the freshwater participation occurred in Southeast, 82% occurred in Southcentral, and 9% took place in the Arctic-Yukon-Kuskokwim (AYK) or interior Alaska (Table 13).

Angler days of effort in 2012 indicate that 90% of the anglers in the freshwater guided fishery were nonresident anglers, 8% were residents and 2% were crew fishing, comped anglers or those of unknown residency. In Southeast, 94% of the guided/chartered fishing was conducted by nonresident anglers, 90% were nonresidents in Southcentral, and 92% of the anglers in AYK were nonresidents.

In 2012, sockeye, coho, and king salmon were the predominant species harvested, making up 50%, 39%, and 8% respectively of the harvest statewide, with the remaining 3% consisting of a combination of other fish (Table 13).

Table 13.–Freshwater effort and harvest by species, region and angler type, 2012.

Region ^a	Type of Angler	Angler Days	King	Coho	Sockeye	Cutthroat	Rainbow	Steelhead	Lake Trout	Grayling	Dolly Varden	Northern Pike	Sheefish
Southeast	Resident	294	5	228	65	1	0	0	0	0	18	0	0
	Non-Resident	9,306	67	7,904	1,163	30	1	0	0	0	357	0	0
	Comped	14	0	5	0	0	0	0	0	0	0	0	0
	Crew	246	11	209	174	2	0	0	0	0	2	0	0
	Unknown	64	0	33	21	0	0	0	0	0	8	0	0
	Total	9,924	83	8,379	1,423	33	1	0	0	0	385	0	0
Southcentral	Resident	7,617	980	2,113	2,978	0	11	5	3	1	146	31	0
	Non-Resident	81,042	6,653	29,096	49,045	0	281	13	77	176	1,558	399	0
	Comped	272	16	80	195	0	1	0	0	0	2	0	0
	Crew	986	38	382	871	0	0	0	1	0	13	0	0
	Unknown	533	46	353	226	0	3	0	0	0	4	0	0
	Total	90,450	7,733	32,024	53,315	0	296	18	81	177	1,723	430	0
Arctic-Yukon-Kuskokwim	Resident	565	121	151	174	0	4	0	1	14	38	9	7
	Non-Resident	9,176	561	2,825	894	0	205	0	2	187	309	69	53
	Comped	40	1	0	12	0	4	0	0	1	3	0	13
	Crew	179	4	17	39	0	47	0	0	2	19	0	1
	Unknown	24	3	6	8	0	0	0	0	1	5	2	5
	Total	9,984	690	2,999	1,127	0	260	0	3	205	374	80	79
Total	Resident	8,476	1,106	2,492	3,217	1	15	5	4	15	202	40	7
	Non-Resident	99,524	7,281	39,825	51,102	30	487	13	79	363	2,224	468	53
	Comped	326	17	85	207	0	5	0	0	1	5	0	13
	Crew	1,411	53	608	1,084	2	47	0	1	2	34	0	1
	Unknown	621	49	392	255	0	3	0	0	1	17	2	5
	Total	110,358	8,506	43,402	55,865	33	557	18	84	382	2,482	510	79

Note: Data are current as of 04/24/2013.

^a Region is based on the area code of the site code listed on each logbook page.

DISCUSSION

GUIDE AND BUSINESS LICENSING

From 2005 through 2012, the ADF&G guide and business licensing process differed from the registration process in 2004 and prior in terms of the approach used, fees, and the information collected on license applications. The current licensing approach reflects changes made in 2005 to initiate the new minimum requirements established by HB 452. Guides and businesses offering guided fishing services are now held to a higher standard of compliance than previous to 2005. Violations of the guide licensing statutes or regulations adopted under HB 452 are either violations or misdemeanors, and courts are authorized to revoke the license of the guide or business under certain conditions, such as repeated convictions within a three-year period.

ADF&G no longer collects the information collected on previous applications regarding the type (saltwater vs. freshwater) and location (regions/subareas) of services. That information is available from logbook data. The 2005-2012 licensing processes have been similar and provide a basis for establishing a long-term database of licensed businesses and guides. Charter/guide business and guide licensing still reflects the intent to operate, while actual activity is confirmed by the submission of logbook trip data.

LOGBOOKS

ADF&G initiated a mandatory saltwater charter logbook program in 1998. The BOF adopted regulations requiring annual registration of sport fishing guides and businesses, and logbook reporting. The logbook and registration/licensing program was intended to provide information on actual participation and harvest by individual vessels and businesses.

Recent emphasis from ADF&G management staff and NPFMC on more timely saltwater data spurred discussions on how to hasten logbook data availability. Up until 2010, logbook data entry involved collecting logbook sheets from the guide, entering the logbook data into a logbook database, and editing the data. This process could take RTS from six to eight weeks.

Upon further discussion and research, an alternative approach was considered. In 2009, ADF&G programmers researched the option of developing a system that would electronically scan the image of a redesigned logbook data page. Scanned images would minimize data entry time but allow for data entry personnel to fix images flagged as unrecognizable, thus maintaining data accuracy and quality. This option is not any more “burdensome” to the industry and would likely make the weekly reporting requirement more palatable knowing that the data would be more immediately available.

In 2010, the saltwater logbook data page design change incorporated the ability to use the new scanning software. Due to first year design “glitches” and software troubleshooting, the 2010 saltwater data was not available in as timely a manner as originally hoped. A program review with office assistants (data entry personnel) and discussions with the project analyst programmer resulted in adjustments to the design format and software that was implemented in 2011 and continued to be applied in 2012.

In addition to the full implementation and use of the scanning software in 2011, ADF&G worked collaboratively with National Marine Fisheries Service (NMFS) to modify the logbook requirements associated with the federal Charter Halibut Permit (CHP) program, a program that establishes limited access to the guided halibut fishery. The 2011 and 2012 saltwater logbooks

were designed to capture CHP numbers associated with the permits granted by NMFS to qualifying participants in the sport fish charter halibut fishery.

In late 2012, staff discussions included the possibility of an electronic submission option that would provide data to ADF&G and NPFMC staff in a more timely manner. Options and discussions were further brought up during the early 2013 legislative session. Any option for a logbook change would have to include a design that is appealing and easy for the guide industry to use, such that they would perceive it as beneficial to a process that they already consider “burdensome.” Electronic reporting options were, at first, appealing to fulfill both management needs and halibut management needs for more timely information. Further discussions concluded that electronic reporting would still necessitate the use of a paper version of the logbook due to enforcement and trip recording requirements. Data would still need to be verified for errors, be entered accurately in a timely manner into a database, and be available for onsite inspection. There are currently no options for going “paperless,” and no perceived benefit to managers or the industry that would result from the process. The “paperless” approach would require a change in regulation for reporting requirements along with extensive research into the cost of electronic reporting. The discussion for going “paperless” will continue however.

Electronic reporting options were further discussed during the 2013 legislative session in reference to Senate Bill 79 (SB79). SB79, a Sport Fishing Guide Services bill, entertained the feasibility and possible future requirement of electronic reporting of logbook data. As a result, division staff will query the guide industry with a simple mail out survey to determine the extent and interest in adopting electronic reporting options. Survey responses will be summarized and made available to the division director in time for the 2014 legislative session.

Preliminary results from verification studies comparing the accuracy of logbook harvest data with the statewide harvest survey estimates, and onsite creel programs are favorable. Logbook data will continue to be compared to counts from these programs. Comparisons are ongoing and are part of a more comprehensive evaluation of logbook data quality. Logbook halibut data has been used extensively. Saltwater and freshwater logbook data have also been used for a variety of regulatory analyses for state managed species.

ACKNOWLEDGEMENTS

Southeast and Southcentral regional and area staff, especially numerous front counter personnel, have been critical to the success of the ADF&G sport fishing guide and business licensing and logbook program. The above staff along with Bob Chadwick and Mike Jaenicke from Southeast, Scott Meyer, Matt Miller and Tom Vania from Southcentral, and Tom Taube from Fairbanks have also provided valuable comments during the process of licensing and logbook form design.

Bob Clark’s thoughtful insight and direction has been very much appreciated. We also acknowledge the expertise and infinite patience exhibited by Joanne MacClellan in preparing this report. Her knowledge and willingness to assist is invaluable.

Kirk Brogdon of the division’s Research and Technical Services section deserves considerable credit for designing and implementing efficient information management systems for data capture, scanning, cleaning, storage, and reporting.

Kathy Kush should be acknowledged for her incredible skills in streamlining the licensing process and making sure that all license applications are processed in a timely manner that has allowed the guides and businesses to start operation without delay.

Diane Novinska, Raili Kedzior, Andrea Hamby and Cindy Palmatier deserve credit for receiving, editing, scanning, entering, and filing the licensing and logbooks forms. Their knowledge has enhanced public relations critical to maintaining a relationship with the industry and encouraging compliance. With their perseverance, we've continued to meet reporting deadlines that seemed nearly impossible with available staffing and workloads.

We also acknowledge the cooperation of the thousands of sport fishing guides and sport fishing businesses that licensed and completed their logbooks in a timely and compliant manner.

REFERENCES CITED

- Chapell, R. S. 2010. Production, escapement, and juvenile tagging of Chilkat River Chinook salmon in 2007. Alaska Department of Fish and Game, Fishery Data Series No. 10-86, Anchorage. <http://www.sf.adfg.state.ak.us/FedAidpdfs/FDS10-86.pdf>
- Dean, M. R. 2001. Alaska Department of Fish and Game sportfishing guide and business registration and saltwater sportfishing charter vessel logbook program, 1999. Alaska Department of Fish and Game, Special Publication No. 01-1, Anchorage. <http://www.sf.adfg.state.ak.us/FedAidPDFs/sp01-01.pdf>
- Dean, M. R., and A. L. Howe. 1999. Alaska Department of Fish and Game sportfishing guide and business registration and saltwater sportfishing charter vessel logbook program, 1998. Alaska Department of Fish and Game, Special Publication No. 99-1, Anchorage. <http://www.sf.adfg.state.ak.us/FedAidPDFs/sp99-01.pdf>
- Jennings, G. B., K. Sundet, and A. E. Bingham. 2011. Estimates of participation, catch, and harvest in Alaska sport fisheries during 2010. Alaska Department of Fish and Game, Fishery Data Series No. 11-60, Anchorage. <http://www.adfg.alaska.gov/FedAidpdfs/FDS11-60>
- Sigurdsson, D., and B. Powers. 2012. Participation, effort, and harvest in the sport fish business/guide licensing and logbook reporting programs, 2011. Alaska Department of Fish and Game, Fishery Data Series No. 12-27, Anchorage. <http://www.adfg.alaska.gov/FedAidPDFs/FDS12-27.pdf>
- Sigurdsson, D., and B. Powers. 2011. Participation, effort, and harvest in the sport fish business/guide licensing and logbook reporting programs, 2010. Alaska Department of Fish and Game, Fishery Data Series No. 11-31, Anchorage. <http://www.sf.adfg.state.ak.us/FedAidPDFs/FDS11-31.pdf>
- Sigurdsson, D., and B. Powers. 2010. Participation, effort, and harvest in the sport fish business/guide licensing and logbook reporting programs, 2009. Alaska Department of Fish and Game, Fishery Data Series No. 10-65, Anchorage. <http://www.sf.adfg.state.ak.us/FedAidPDFs/FDS10-65.pdf>
- Sigurdsson, D., and B. Powers. 2009. Participation, effort, and harvest in the sport fish business/guide licensing and logbook reporting programs, 2006-2008. Alaska Department of Fish and Game, Special Publication No. 09-11, Anchorage. <http://www.sf.adfg.state.ak.us/FedAidPDFs/SP09-11.pdf>
- Wendt, K. L., and M. J. Jaenicke. *In prep.* Harvest estimates for selected marine sport fisheries in Southeast Alaska during 2010. Alaska Department of Fish and Game, Fishery Data Series, Anchorage.

**APPENDIX A.
SPORT FISH BUSINESS OWNER/GUIDE LICENSE
APPLICATION**



2012 SPORT FISH BUSINESS OWNER/ GUIDE LICENSE APPLICATION

Alaska Department of Fish and Game / Division of Sport Fish - RTS
333 Raspberry Road, Anchorage, Alaska 99518-1565
Telephone: (907)267-2369 or (907)267-2390
<http://www.adfg.alaska.gov/index.cfm?adfg=prolicenses.sportfishguides>

License #

This TEMPORARY LICENSE is good for 21 business days from date signed by ADFG Representative

<p>FEES CHECK ONE: <u>All fees are nonrefundable</u></p> <p><input type="checkbox"/> \$50.00 Guide Only License</p> <p><input type="checkbox"/> \$100.00 Business Only License</p> <p><input type="checkbox"/> \$100.00 Combined Business/Guide License* <small>*An agent for this business cannot apply as a guide on a combination license</small></p> <p><input type="checkbox"/> \$50.00 Guide Only Upgrade to Combination Business/Guide License</p>	<p>METHOD OF PAYMENT:</p> <p><input type="checkbox"/> Check # : _____ <small>Make checks payable to "State of Alaska"</small></p> <p><input type="checkbox"/> Money Order # : _____</p> <p><input type="checkbox"/> Cash (Anchorage, Juneau, Fairbanks offices <u>ONLY</u>)</p> <p><input type="checkbox"/> Credit Card (Anchorage, Juneau, Fairbanks offices <u>ONLY</u>)</p>	<p><i>APPLICATION MUST BE STAMPED BY ADF&G TO BE VALID</i></p>
--------------------------------------------------------------------------------------------------------------------------------------------------------------------------------------------------------------------------------------------------------------------------------------------------------------------------------------------------------------------------------------------------------------------------------------------------------------------------	-------------------------------------------------------------------------------------------------------------------------------------------------------------------------------------------------------------------------------------------------------------------------------------------------------------------------------------------------------------------------------------------	------------------------------------------------------------------------------------

INSTRUCTIONS TO COMPLETE FORM ON REVERSE

SECTION A: ALL APPLICANTS COMPLETE THIS SECTION

Name of Business Owner or Guide: _____
Last First MI

Permanent Mailing Address : _____
PO Box or Street Address City State Zip

Telephone Number: (____) _____ In season Telephone Number: (____) _____

Mail License Here: _____
(if different than above) PO Box or Street Address City State Zip

SECTION B: TO BE FILLED OUT BY THE BUSINESS OWNER OR THEIR AGENT

BUSINESS INFORMATION:

Name of Business: _____

Name of Business Owner: _____

State of Alaska Business License Number: _____ Expiration Date: Mo/Date/Yr

INSURANCE: *See detailed insurance requirements on back.*

Name of Insurance Company: _____

Policy/Binder #: _____ Effective Dates: From: _____ To: _____

Remember to get a logbook for your business at the nearest ADF&G office prior to commencement of guiding activities!

SECTION C: TO BE FILLED OUT BY GUIDE OR THEIR AGENT

Are you a citizen of the United States, Canada, Mexico or a resident alien? Yes No

Basic First Aid Information: Certifying agency: _____ Exp. Date: Mo / Yr

2012 Alaska Sport Fishing License # : _____ Date of Birth: Mo/Date/Yr

U.S. COAST GUARD OPERATOR'S LICENSE: *(See explanation on back)*

Do you plan to operate a motorized vessel in Navigable Waters? Yes No **If yes, complete the next line.**

U.S.C.G. License # or Merchant Mariner Credential Doc #: _____ Exp.Date: Mo/Date/Yr

SIGNATURE OF BUSINESS OWNER/AGENT or GUIDE:
I hereby certify that all information is true and correct and that I understand this information is subject to public disclosure. (NOTE: Making a false statement or omitting a material fact, is subject to a maximum penalty of \$10,000 or 1 year imprisonment, or both, per AS 11.56.210.)

_____ **Circle one:** Applicant or Agent **Date:** _____

This temporary license must be signed and stamped by an ADF&G employee and in your possession before guiding activities begin.

Name of ADF&G Representative (print): _____ Date: _____

Signature: _____ Place of Issue: _____

Bottom Copy To Applicant



INSTRUCTIONS FOR THE 2012 SPORT FISH BUSINESS OWNER/GUIDE LICENSE APPLICATION

Attention: *The following will apply without exception:*

1. All applicable sections of the license application must be complete and legible prior to ADF&G validation. No “pending”, “unknowns,” or blanks will be accepted.
2. Incomplete license applications will be returned resulting in a processing delay.
3. A signature is required.
4. This is a license application only. A post card sized annual license will be mailed within 21 business days.
5. There may be requirements by other state and federal agencies to operate as a guide in Alaska.

INSTRUCTIONS:

SECTION A: ALL applicants must complete this section.

SECTION B: BUSINESS OWNER OR THEIR AGENT: Complete this section if you are the owner/agent of the sport fishing business. This section should be filled out even if the owner does not intend to personally guide clients. An agent for this business **CANNOT** apply as a guide on the same application. A separate license application must be submitted.

LIABILITY INSURANCE REQUIREMENT: General liability or marine protection that covers at least \$100,000 for each incident and \$300,000 for all incidents in a year. Insurance must cover **ALL** periods of time when the owner or owner’s employees are providing sport fishing services to clients. Insurance must be current, **NOT** pending.

IMPORTANT NOTICE TO BUSINESS OWNERS

State regulation (5 AAC 75.075) requires that all operators providing sport fishing guide services in Alaska must apply annually for a license with the Department of Fish and Game **before** guiding services begin. Business owners are required to register all charter vessels with ADF&G and acquire a logbook prior to commencement of guiding activities. ***Guides hired by an operator must be provided with a copy of the ADF&G business license in their possession while guiding.***

SECTION C: GUIDES: Complete this section if you intend to guide for a sport fish operation owned by someone other than you or if you are the business owner who also intends to guide (owner/operator).

U.S. COAST GUARD OPERATOR’S LICENSE: A licensed sport fish guide **must** have, at minimum, a Limited OUPV for Western Waters in Alaska or 6-pak U.S.C.G. operator’s license in their possession while operating a motorized vessel with clients or transporting clients in a motorized vessel on navigable waters. Navigable waters are determined by the U.S. Coast Guard (907) 271-6700.

Note: Effective April 20, 2009 the U.S.C.G. began issuing the Merchant Mariner Credentials (MMC). Applicants must provide their U.S.C.G. license number, expiration date and date of birth (DOB).

IMPORTANT NOTICE TO GUIDES

State regulation (5 AAC 75.075) requires that all licensed guides providing sport fishing guide services in Alaska must apply annually for a license with the Department of Fish and Game **before** guiding activities begin.

WHAT A GUIDE MUST HAVE IN POSSESSION WHILE GUIDING

A sport fish business owner or guide should be able to present all documents required for licensing upon request by a representative of the department of fish and game, or any peace officer of the state. While engaged in providing sport fishing guide services, a sport fishing guide shall have the following readily available for inspection:

- A current sport fishing guide license;
- A copy of the current ADF&G sport fishing business license of the guide’s employer;
- A current Alaska sport fishing license, tags, stamps or permits that are required to engage in the sport fishery for which the guide services are providing;
- An identification card issued to the sport fishing guide by a state or federal agency that bears a photo of the sport fishing guide.

APPENDIX B.
SALTWATER LOGBOOK FORM



**State of Alaska
Department of Fish & Game
Division of Sport Fish**

2012 Saltwater Charter Logbook and Vessel Registration

Vessel
Name: _____

Vessel AK. #
or
U.S.C.G. #: _____

ALL CHARTER TRIP ACTIVITY CONDUCTED FROM THIS VESSEL MUST BE RECORDED WITHIN THE LOGBOOK ASSIGNED TO THIS VESSEL

Federal rules require that the Charter Halibut Permit (CHP) number(s) be recorded on the logbook before the beginning of any trip during which halibut are caught and retained.

CHP #:	CHP HOLDER:
_____	_____
_____	_____
_____	_____
_____	_____

Please follow the INSTRUCTIONS carefully as they have changed

LOGBOOK INSPECTION

This logbook must be presented for inspection, upon request, to any representative of the Department of Fish and Game, peace officer of the state, or law enforcement representative of the National Marine Fisheries Service.



Alaska Department of Fish & Game

2012 Saltwater Sport Fishing Charter Trip Logbook Page

RETURN TO: 333 RASPBERRY ROAD, ANCHORAGE, ALASKA 99518-1565 • QUESTIONS: CALL (907) 267- 2369

120000-01

LOGBOOK PAGE

TRIP INFORMATION

➔ Complete this section for every trip. Continue on additional pages for trips with more than six anglers in the same trip.

➔ DATE FISHED: _____ / _____ 2012 AM PM
Month Day Hour Trip Ended

➔ 2012 GUIDE LICENSE NUMBER: _____
(assigned to you by ADF&G)

➔ CHARTER HALIBUT PERMIT (CHP) NUMBER: _____
(assigned to you by NOAA)

Check box if more than one CHP is used on this trip:

FOR OFFICE USE ONLY

 Total Anglers

➔ TARGETED SPECIES / LOCATION FISHED: (where most fish species were caught)

Salmon: _____
Primary Statistical Area Hours Fished

Bottomfish: _____
Primary Statistical Area Hours Fished

➔ COMMUNITY OR PORT WHERE TRIP ENDED: _____
(where fish or clients were off-loaded from vessel)

➔ GUIDED ANGLER FISH (GAF) NUMBER: _____
(assigned to you by NOAA)

INDIVIDUAL ANGLER AND CATCH INFORMATION

Complete one row below for each angler who fished this trip. Record sport fishing license number, printed name AND Alaska residency status for all anglers. Write "YOUTH" in license number field for anglers under 16.

	AK Resident	Non - Resident	Comped	Crew	Kept / Released	SALMON							BOTTOMFISH					
						King (28" & larger)	King (under 28")	Coho	Sockeye	Other Salmon	Halibut	GAF Halibut	Lingcod	Pelagic Rockfish	Yelloweye Rockfish	Non-pelagic Rockfish (includes Hobbys)	Sablefish (Black Cod)	Salmon Shark
1. _____ License Number	<input type="radio"/>	<input type="radio"/>	<input type="radio"/>	<input type="radio"/>	K▶	<input type="text"/>	<input type="text"/>	<input type="text"/>	<input type="text"/>	<input type="text"/>	<input type="text"/>	<input type="text"/>	<input type="text"/>	<input type="text"/>	<input type="text"/>	<input type="text"/>	<input type="text"/>	<input type="text"/>
_____ R▶ First Name / Last Name						<input type="text"/>	<input type="text"/>				<input type="text"/>	<input type="text"/>	<input type="text"/>	<input type="text"/>	<input type="text"/>	<input type="text"/>	<input type="text"/>	<input type="text"/>
_____ Signature																		
2. _____ License Number	<input type="radio"/>	<input type="radio"/>	<input type="radio"/>	<input type="radio"/>	K▶	<input type="text"/>	<input type="text"/>	<input type="text"/>	<input type="text"/>	<input type="text"/>	<input type="text"/>	<input type="text"/>	<input type="text"/>	<input type="text"/>	<input type="text"/>	<input type="text"/>	<input type="text"/>	<input type="text"/>
_____ R▶ First Name / Last Name						<input type="text"/>	<input type="text"/>				<input type="text"/>	<input type="text"/>	<input type="text"/>	<input type="text"/>	<input type="text"/>	<input type="text"/>	<input type="text"/>	<input type="text"/>
_____ Signature																		
3. _____ License Number	<input type="radio"/>	<input type="radio"/>	<input type="radio"/>	<input type="radio"/>	K▶	<input type="text"/>	<input type="text"/>	<input type="text"/>	<input type="text"/>	<input type="text"/>	<input type="text"/>	<input type="text"/>	<input type="text"/>	<input type="text"/>	<input type="text"/>	<input type="text"/>	<input type="text"/>	<input type="text"/>
_____ R▶ First Name / Last Name						<input type="text"/>	<input type="text"/>				<input type="text"/>	<input type="text"/>	<input type="text"/>	<input type="text"/>	<input type="text"/>	<input type="text"/>	<input type="text"/>	<input type="text"/>
_____ Signature																		
4. _____ License Number	<input type="radio"/>	<input type="radio"/>	<input type="radio"/>	<input type="radio"/>	K▶	<input type="text"/>	<input type="text"/>	<input type="text"/>	<input type="text"/>	<input type="text"/>	<input type="text"/>	<input type="text"/>	<input type="text"/>	<input type="text"/>	<input type="text"/>	<input type="text"/>	<input type="text"/>	<input type="text"/>
_____ R▶ First Name / Last Name						<input type="text"/>	<input type="text"/>				<input type="text"/>	<input type="text"/>	<input type="text"/>	<input type="text"/>	<input type="text"/>	<input type="text"/>	<input type="text"/>	<input type="text"/>
_____ Signature																		
5. _____ License Number	<input type="radio"/>	<input type="radio"/>	<input type="radio"/>	<input type="radio"/>	K▶	<input type="text"/>	<input type="text"/>	<input type="text"/>	<input type="text"/>	<input type="text"/>	<input type="text"/>	<input type="text"/>	<input type="text"/>	<input type="text"/>	<input type="text"/>	<input type="text"/>	<input type="text"/>	<input type="text"/>
_____ R▶ First Name / Last Name						<input type="text"/>	<input type="text"/>				<input type="text"/>	<input type="text"/>	<input type="text"/>	<input type="text"/>	<input type="text"/>	<input type="text"/>	<input type="text"/>	<input type="text"/>
_____ Signature																		
6. _____ License Number	<input type="radio"/>	<input type="radio"/>	<input type="radio"/>	<input type="radio"/>	K▶	<input type="text"/>	<input type="text"/>	<input type="text"/>	<input type="text"/>	<input type="text"/>	<input type="text"/>	<input type="text"/>	<input type="text"/>	<input type="text"/>	<input type="text"/>	<input type="text"/>	<input type="text"/>	<input type="text"/>
_____ R▶ First Name / Last Name						<input type="text"/>	<input type="text"/>				<input type="text"/>	<input type="text"/>	<input type="text"/>	<input type="text"/>	<input type="text"/>	<input type="text"/>	<input type="text"/>	<input type="text"/>
_____ Signature																		

Form 11-540 (01-2012)

CERTIFICATION: I certify that the information provided herein is accurate and true. Falsification or omission of information on this form is punishable under AS 11.66.210(a) and 6 AAC 75.076.

X _____ GUIDE SIGNATURE PAGE OF

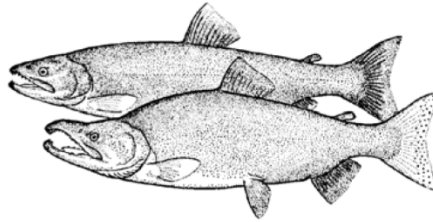
**APPENDIX C.
FRESHWATER LOGBOOK FORMS**

**2012 Freshwater Sport Fish
Guide Logbook
and
Vessel Registration**

LOGBOOK NO.

BUSINESS NAME

ADF&G BUSINESS OWNER'S LICENSE NO.



*Please follow the instructions carefully
as they have changed.*



**State of Alaska Department of Fish & Game
Division of Sport Fish**

LOGBOOK INSPECTION

*Upon request from any representative
of the Department or any peace officer of the state,
a person is required to present this Alaska Department
of Fish and Game Freshwater Sport Fishing
Guide Logbook for inspection.*

-continued-



Alaska Department of Fish & Game

2012 Freshwater Sport Fish Trip Logbook

RETURN TO: 333 RASPBERRY ROAD, ANCHORAGE, AK 99518-1565 • QUESTIONS: (907) 267-2369

LOGBOOK NO. _____

TRIP INFORMATION	Angler Residency		Sport Fish License Number of each Client, Nonpaying angler, and Crew THAT FISHED AND Record all those anglers under 16 as "Youth Angler" (YA1, YA2etc.)			SALMON										TROUT			OTHER			
	Resident	Non-Resident	Compass Crew	Circle One if applicable	KEPT	RELEASED	KING	COHO	SOCKEYE	CUTTHROAT	RAINBOW	STEELHEAD	LAKE TROUT	DOLLY VARBEN	ARCTIC CHAR	A R C T I C GRAYLING	NORTHERN PIKE	SHEEFISH *				
2012 ADF&G GUIDE LICENSE #: _____	<input type="radio"/>	<input type="radio"/>	<input type="checkbox"/>	<input type="checkbox"/>	<input type="checkbox"/>	<input type="checkbox"/>																
DATE FISHED: _____, 2012 (Month) (Day)	<input type="radio"/>	<input type="radio"/>	<input checked="" type="checkbox"/>	<input type="checkbox"/>	<input type="checkbox"/>	<input type="checkbox"/>						KEPT										
RIVER / STREAM / LAKE (SPECIFY)	<input type="radio"/>	<input type="radio"/>	<input checked="" type="checkbox"/>	<input type="checkbox"/>	<input type="checkbox"/>	<input type="checkbox"/>						RELEASED										
SITE CODE (REFER TO SITE CODE LIST)	<input type="radio"/>	<input type="radio"/>	<input checked="" type="checkbox"/>	<input type="checkbox"/>	<input type="checkbox"/>	<input type="checkbox"/>						KEPT										
PAGE NO. _____ OF _____	<input type="radio"/>	<input type="radio"/>	<input checked="" type="checkbox"/>	<input type="checkbox"/>	<input type="checkbox"/>	<input type="checkbox"/>						RELEASED										
TOTAL NO. OF PAGES FOR THIS TRIP ↑	<input type="radio"/>	<input type="radio"/>	<input checked="" type="checkbox"/>	<input type="checkbox"/>	<input type="checkbox"/>	<input type="checkbox"/>						KEPT										
* WRITE IN OTHER SPECIES HERE	<input type="radio"/>	<input type="radio"/>	<input checked="" type="checkbox"/>	<input type="checkbox"/>	<input type="checkbox"/>	<input type="checkbox"/>						RELEASED										

CERTIFICATION: I certify that the information provided herein is accurate and true. Falsification or omission of information on this form is punishable under AS 11.56.210(a) and 5 AAC 75.076.

X

GUIDE SIGNATURE

CONTINUE ON NEXT PAGE IF MORE THAN 6 ANGLERS. CHECK IF TRIP INFORMATION IS CONTINUED ON NEXT PAGE:

APPENDIX D.
VESSEL REGISTRATION FORMS, DECALS AND TAGS



INSTRUCTIONS FOR ADF&G REPRESENTATIVE:

Please forward the **white** copy of this form to: **Sport Fish RTS, 333 Raspberry Rd., Anchorage, AK 99518-1565.**

DO NOT REMOVE THE PINK COPY. THE PINK COPY MUST STAY IN THE LOGBOOK.

DO NOT ISSUE A LOGBOOK UNLESS THE APPLICANT HAS THE FOLLOWING:

- ➡ 2012 ADF&G Sport Fish Business License
- ➡ Current AK Vessel Number issued by DMV or Current U.S.C.G. Vessel Documentation No.

NONE OF THE ABOVE CAN BE "PENDING"

2012 ADF&G Sport Fish Business Owner and Guide License applications are available at all ADF&G offices or online at: <http://www.adfg.alaska.gov/index.cfm?adfg=prolicenses.forms>

AK Vessel Registration information is available from Alaska Div. of Motor Vehicles at (907) 269-5551 or online at: <http://www.doa.alaska.gov/dmv/reg/boat.htm>

2012 Saltwater Sport Fish Charter Logbook Sign-Out AND Vessel Registration
Must be completed

SPORT FISH BUSINESS INFORMATION:

Name of Sport Fishing Business: _____

ADF&G Sport Fish Business License Number : 2012- _____

SPORT FISHING CHARTER VESSEL REGISTRATION:

➡ DMV issued AK No. or U.S.C.G. Vessel Documentation No.: _____
(A logbook WILL NOT be issued without a current AK or U.S.C.G number)

➡ Vessel Name: _____
(Vessel name and AK No. or U.S.C.G. # must appear on the cover)

➡ Primary Alaska Saltwater port from which this vessel will operate during 2012:

DEPARTMENT USE ONLY

➡ **Did you issue a Stat. Area Map?** YES NO If No, Explain:

➡ **ADF&G Representative:** *(print)* _____

➡ **Area Office:** _____ **Date of Issue:** _____

LOGBOOK NO.

2012 FRESHWATER SPORT FISH
Logbook Sign-Out
SPORT FISH BUSINESS INFORMATION

Must have a current ADF&G Business License Number

NAME OF PERSON TO WHOM THIS LOGBOOK WAS ISSUED

SPORT FISHING BUSINESS NAME

ADF&G LICENSE NUMBER OF BUSINESS (NOT A "GUIDE ONLY" LICENSE)

CONTACT PHONE NUMBER



Do you plan to use a vessel while providing sport fishing guided services in freshwater?

No Yes (If yes, list vessels on pg. iii)

INSTRUCTIONS TO ADF&G REPRESENTATIVE

Please forward the white copy of this form to:
Sport Fish Research & Technical Services
333 Raspberry Rd., Anchorage, AK 99518

ADF&G area offices will keep the pink copy on file.

Do NOT issue a logbook unless the applicant has the following:

- 2012 ADF&G Business License;
- Current AK Boat Number issued by DMV OR current U.S.C.G. Vessel Documentation number, if applicable.

None of the required information can be "pending." This form must be complete and accurate to the best of your knowledge. Incomplete forms will be returned to you for follow-up and completion, resulting in a processing delay.

DID YOU PROVIDE A SITE CODE LIST ?

ADF&G REPRESENTATIVE (PRINT)

AREA OFFICE

DATE OF ISSUE



2012

**APPENDIX E.
SALTWATER EDITING RESULTS**

Appendix E1.–Saltwater editing results, 2012.

Edit	Number Occurrences
No guide license number	0
Invalid guide license number	10
Missing date	0
Invalid date (not in correct year)	0
Invalid port of offloading	11
Invalid port of origin	N/A
Missing salmon statistical area	34
Missing bottomfish statistical area	41
Invalid salmon statistical area	6
Invalid bottomfish statistical area	8
Salmon harvest no salmon statistical area	833
Bottomfish harvest no bottomfish statistical area	2,035
Salmon statistical area listed, no hours listed	509
Bottomfish statistical area listed, no hours listed	672
No statistical area listed	118
No hours listed	80
Possible invalid salmon statistical area	0
Possible invalid bottomfish statistical area	0
Log pages turned in late ^a	2,906
Log book wasn't checked out to a business	0
Salmon or bottomfish hours are greater than 12	123
Duplicate log pages	0
Trip records without angler records	0
Date fished greater than date received by ADF&G	2
Trips	47,482

^a Late includes an additional 7 day grace period.

**APPENDIX F.
FRESHWATER EDITING RESULTS**

Appendix F1.–Freshwater editing results, 2012.

Edit	Number Occurrences
No guide license number	0
Invalid guide license number	0
Missing date	0
Invalid date (not in correct year)	0
Missing site code	4
Invalid site code	0
No paying clients	0
Log pages turned in late ^a	6,155
Duplicate log pages	0
Date fished greater than date received by ADF&G	46
Log book wasn't checked out to a business	0
Kenai River trips on Sunday or Monday	313
Trip records without angler records	0
Trips	37,788

^a Late includes an additional 7 day grace period.

**APPENDIX G.
FRESHWATER LOGBOOK SUMMARIES BY AREA AND
SITE**

Appendix G1.—Freshwater logbook participation by area and site, Southeast Alaska, 2012.

Area	Site	Trips	Businesses ^a	Guides ^a	Angler Days					Total
					Resident	Non-Res	Comped	Unknown	Crew	
A	Lakes and streams	90	5	10	5	213	1	0	0	219
B	Eagle Creek (Bear Creek)	16	4	6	0	37	0	0	0	37
B	Staney Creek	48	5	10	0	130	0	0	0	130
B	Thorne River and Lake	28	5	8	0	61	0	0	0	61
B	Other lakes and streams	50	7	11	5	117	0	0	0	122
C	Streams	67	10	14	5	178	0	0	0	183
D	Baranof Island streams and lakes	144	10	30	2	484	0	1	5	492
D	Chichagof Island streams and lakes	24	6	11	2	107	0	2	0	111
D	Eva Lake and Stream (Baranof Island)	33	5	11	0	98	0	5	0	103
D	Nakwasina Sound streams (Baranof Island)	44	5	8	1	158	0	0	0	159
D	Plotnikof System Stream and Lake (Baranof Island)	14	6	7	0	50	0	0	3	53
D	Politofski Creek (Baranof Island)	9	4	4	2	31	0	0	0	33
D	Salmon Creek (Baranof Island)	21	4	6	2	57	0	5	0	64
D	Sitkoh Creek and Lake (Chichagof Island)	57	6	9	3	190	2	5	0	200
D	Other lakes and streams	25	9	11	0	98	0	1	3	102
E	Admiralty Island streams (Admiralty Island)	147	8	30	2	617	4	5	10	638
E	Other lakes and streams	240	5	18	7	1,103	0	4	1	1,115
G	Mud Bay Creek (Chichagof Island)	22	5	8	0	111	0	0	0	111
G	North Chichagof Island streams	78	5	11	4	342	2	7	3	358
G	Other lakes and streams	16	4	4	1	57	0	0	0	58
H	Situk River (above weir)	420	8	15	104	873	0	11	84	1,072
H	Situk River (below weir)	89	7	13	21	228	0	2	57	308
H	Tsiu River	502	4	22	53	1,979	0	14	26	2,072
H	Other lakes and streams	384	12	24	71	1,549	5	2	54	1,681
	Other lakes and streams in Southeast Alaska	104	3	8	4	438	0	0	0	442
	Total Southeast	2,672	63	160	294	9,306	14	64	246	9,924

Note: Responses with less than 4 businesses are not reported separately, to protect confidentiality of respondents. Data are current as of 04/24/2013.

^a Regional and statewide business and guide totals aren't additive because a business and/or guide can operate in multiple sites and areas.

Appendix G2.—Freshwater logbook participation by area and site, Southcentral Alaska, 2012.

Area	Site	Trips	Businesses ^a	Guides ^a	Angler Days					Total
					Resident	Non-Res	Comped	Unknown	Crew	
J	Other East Prince William Sound streams	90	5	11	5	378	1	2	14	400
J	Other lakes	8	4	4	0	32	0	0	1	33
J	Other streams	27	6	6	2	96	0	1	5	104
K	Lakes and streams	160	9	13	163	393	0	7	40	603
M	Alexander Lake	6	5	6	3	18	0	0	0	21
M	Chunilna Creek (Clear Creek)	144	7	12	5	551	5	8	3	572
M	Deshka River (Kroto Creek) below weir	299	12	16	440	710	2	18	16	1,186
M	Fish Lake Creek and Fish Lakes (Yentna drainage)	18	5	6	4	44	0	0	0	48
M	Indian Creek (into Yentna near Fish Lakes)	72	4	10	1	224	1	1	3	230
M	Lake Creek	1,031	18	49	137	2,621	6	14	47	2,825
M	Peters Creek (Petersville Road)	42	6	7	0	197	0	1	0	198
M	Talachulitna River	281	8	14	12	707	8	0	62	789
M	Talkeetna River	305	7	20	123	1,005	4	81	29	1,242
M	Yentna River	60	6	14	2	152	6	0	0	160
M	Yentna River drainage (remainder)	417	13	34	27	1,155	1	17	30	1,230
M	Other streams - Chulitna / East Susitna drainage	82	15	13	64	214	1	1	35	315
M	Other streams - West Susitna drainage	74	11	15	7	226	2	8	0	243
N	Bachatna Creek	25	8	7	1	104	0	0	0	105
N	Big River	64	9	11	19	214	0	0	0	233
N	Big River Lakes	705	30	42	126	2,573	4	4	21	2,728
N	Chuitna River	22	8	8	5	87	0	1	0	93
N	Coal Creek (into Beluga Lake)	20	5	5	0	79	0	0	1	80
N	Crescent Lake	282	19	29	40	814	0	9	11	874
N	Crescent River (Grecian River)	37	10	11	10	144	0	0	0	154
N	Kamishak River	136	7	29	6	319	0	4	1	330
N	Kustatan River	240	29	36	47	945	1	11	4	1,008
N	Wolverine Creek mouth (by Big River Lakes)	569	17	31	90	2,012	1	33	14	2,150
N	Other lakes and streams	86	8	14	1	271	0	4	0	276
P	Anchor River	36	6	7	5	78	0	0	3	86
P	Deep Creek	40	5	5	2	143	2	0	4	151
P	Hidden Lake	7	4	4	2	22	0	0	0	24

-continued-

Area	Site	Trips	Businesses ^a	Guides ^a	Angler Days					Total
					Resident	Non-Res	Comped	Unknown	Crew	
P	Kasilof River above Highway	100	17	27	15	265	1	1	0	282
P	Kasilof River below Highway	1,747	84	126	872	4,731	28	20	17	5,668
P	Kenai River - Cook Inlet to Soldotna Bridge	4,123	154	227	1,798	11,932	57	71	83	13,941
P	Kenai River - guided, reach not specified	11	6	6	4	27	0	0	0	31
P	Kenai River - Moose River to Skilak outlet	1,662	94	135	748	4,552	26	5	67	5,398
P	Kenai River - Skilak Inlet to Kenai Lake	2,409	51	91	874	6,342	22	17	54	7,309
P	Kenai River - Soldotna Bridge to Moose River	886	67	98	163	2,616	13	9	22	2,823
P	Quartz Creek	33	8	13	4	53	0	3	0	60
P	Russian River	151	14	22	14	318	0	4	1	337
P	Other lakes	49	12	15	0	138	0	3	8	149
P	Other streams	80	8	12	30	278	0	0	6	314
Q	American River	24	5	6	4	43	0	0	1	48
Q	Ayakulik River (sometimes called Red River)	153	5	11	2	477	0	1	0	480
Q	Dog Salmon Creek (Frazer River)	86	5	10	9	340	0	0	15	364
Q	Karluk Lake and River above Weir	87	7	13	9	324	1	1	4	339
Q	Olds River	15	4	5	4	36	0	0	4	44
Q	Saltery River	218	10	13	31	704	5	0	81	821
Q	Other remote streams	383	20	40	44	1,192	4	3	50	1,293
Q	Other roadside streams	73	8	13	6	183	0	0	15	204
R	American Creek	330	15	36	39	780	2	1	1	823
R	Becharof System	143	15	35	11	369	0	0	1	381
R	Brooks Lake	18	5	8	1	41	0	0	0	42
R	Brooks River	442	23	91	40	1,103	2	4	6	1,155
R	Contact Creek	47	9	23	1	132	2	0	0	135
R	Egegik River (Becharof System)	133	6	21	3	505	8	6	7	529
R	Naknek Lake	11	4	7	4	18	0	0	0	22
R	Naknek River (downstream of Rapids Camp)	340	12	34	59	710	0	0	1	770
R	Naknek River (Rapids Camp to Naknek Lake)	687	13	56	69	1,546	2	6	7	1,630
R	Naknek River and tributaries	661	18	63	228	1,428	1	2	5	1,664
R	Swikshak River	32	4	10	1	134	0	0	0	135

-continued-

Area	Site	Trips	Businesses ^a	Guides ^a	Angler Days					Total
					Resident	Non-Res	Comped	Unknown	Crew	
R	Ugashik System	117	16	43	4	297	0	4	3	308
R	Other lakes	10	5	7	0	49	0	0	0	49
R	Other streams	979	21	53	32	2,510	1	4	1	2,548
S	Alagnak (Branch) River	1,174	16	85	40	2,480	8	11	15	2,554
S	Battle River	70	12	29	0	220	16	0	20	256
S	Copper River (Lake Iliamna Area)	570	12	47	53	1,252	1	5	7	1,318
S	Funnel Creek	9	4	7	1	18	0	0	0	19
S	Gibraltar River	143	11	32	7	323	0	0	0	330
S	Iliamna Lake	95	8	20	6	300	1	0	2	309
S	Iliamna River	158	5	18	10	350	0	1	0	361
S	Kijik Lake	13	5	6	0	45	0	2	1	48
S	Kijik River	20	5	10	1	60	0	0	1	62
S	Kontrashibuna Lake	15	4	5	1	47	0	0	2	50
S	Kukaklek River (Big Ku) (into Alagnak)	112	11	28	9	227	0	3	0	239
S	Kulik River	327	14	53	14	839	0	0	1	854
S	Kvichak River	481	20	73	64	995	1	12	8	1,080
S	Lake Clark	74	8	13	8	184	0	0	5	197
S	Little Kulik (into Nanuktuk Creek)	32	6	12	0	58	0	0	0	58
S	Lower Talarik Creek	53	8	23	9	142	0	0	1	152
S	Moraine Creek	397	22	81	11	906	0	2	0	919
S	Nanuktuk Creek	75	12	27	1	157	1	0	0	159
S	Nonvianuk River (into Alagnak)	63	6	16	8	116	0	0	8	132
S	Tazimina River	45	5	13	5	90	0	1	0	96
S	Upper Talarik Creek	10	5	6	2	35	0	0	1	38
S	Other lakes and streams	26	6	13	1	67	0	0	1	69
T	Agulowak River	669	6	37	196	1,065	0	0	1	1,262
T	Agulukpak River	392	11	48	35	693	0	0	4	732
T	Aleknagik Lake	90	4	13	0	186	0	0	0	186
T	Mulchatna River	113	8	11	4	281	0	3	10	298

-continued-

Appendix G2.–Page 4 of 4.

Area	Site	Trips	Businesses ^a	Guides ^a	Angler Days					Total
					Resident	Non-Res	Comped	Unknown	Crew	
T	Nushagak River - Black Point upstream to Sonar Site	848	28	94	264	2,128	11	11	45	2,459
T	Nushagak River - sonar site to outlet of Mulchatna R	1,204	30	117	293	3,399	3	18	36	3,749
T	Nushagak River - upstream from mouth of Mulchatna R	301	5	21	4	569	0	9	0	582
T	Nushagak R System (incl. Harris Cr and King Salmon R)	38	6	9	24	82	0	2	11	119
T	Togiak River and Lake drainage	707	7	52	12	1,433	4	59	1	1,509
T	Wood River Lakes system	359	10	46	43	679	0	1	4	727
T	Other lakes	22	4	9	4	53	0	0	0	57
T	Other streams	414	6	29	10	802	0	2	1	815
	Other lakes and streams in Southcentral	25	4	6	5	60	2	1	0	68
Total Southcentral		30,769	407	1,012	7,617	81,042	268	533	990	90,450

Note: Responses with less than 4 businesses are not reported separately, to protect confidentiality of respondents. Data are current as of 04/24/2013.

^a Regional and statewide business and guide totals aren't additive because a business and/or guide can operate in multiple sites and areas.

Appendix G3.—Freshwater logbook participation by area and site, Arctic-Yukon-Kuskokwim Alaska, 2012.

Area	Site	Trips	Businesses ^a	Guides ^a	Angler Days					Total
					Resident	Non-Res	Comped	Unknown	Crew	
I	Gulkana River (West Fork to Highway)	43	4	5	50	100	1	0	7	158
I	Klutina River	281	11	18	251	685	11	6	26	979
I	Other streams	55	8	9	39	159	0	1	4	203
U	Chena River - above dam	36	4	10	19	84	4	0	3	110
U	Other lakes and streams	600	8	20	15	1,603	5	0	78	1,701
V	Aniak River	272	4	19	1	521	0	4	0	526
V	Goodnews River	748	5	26	42	1,422	5	1	15	1,485
V	Holitna River	151	5	16	3	386	0	2	0	391
V	Kanektok River (Quinhagak, Chosen)	1,133	5	51	24	2,133	0	7	2	2,166
V	Kuskokwim R drainages below and including Aniak R	67	4	9	0	175	0	0	10	185
V	Other streams	125	7	23	0	252	0	0	1	253
W	Streams	357	6	17	90	641	0	1	23	755
Y	Streams	445	5	20	20	884	0	1	8	913
	Other lakes and streams in Arctic-Yukon-Kuskokwim	34	4	5	11	131	14	1	2	159
Total Arctic-Yukon-Kuskokwim		4,347	53	198	565	9,176	40	24	179	9,984

Note: Responses with less than 4 businesses are not reported separately, to protect confidentiality of respondents. Data are current as of 04/24/2013.

^a Regional and statewide business and guide totals aren't additive because a business and/or guide can operate in multiple sites and areas.

Appendix G4.–Freshwater logbook participation by region, Statewide, 2012.

Region	Trips	Businesses ^a	Guides ^a	Angler Days					Total
				Resident	Non-Res	Comped	Unknown	Crew	
Southeast	2,672	63	160	294	9,306	14	64	246	9,924
Southcentral	30,769	407	1,012	7,617	81,042	268	533	990	90,450
Arctic-Yukon-Kuskokwim	4,347	53	198	565	9,176	40	24	179	9,984
Total	37,788	504	1,300	8,476	99,524	322	621	1,415	110,358

Note: Data are current as of 04/24/2013.

^a Regional and statewide business and guide totals aren't additive because a business and/or guide can operate in multiple sites and areas.

Appendix G5.—Freshwater logbook angler days and species kept by area and site, Southeast Alaska, 2012.

Area	Site	Angler Days	Salmon					Lake Trout	Dolly Varden	Grayling	Pike	Sheefish
			King	Coho	Sockeye	Cutthroat	Rainbow					
A	Lakes and streams	219	0	110	0	0	0	0	3	0	0	0
B	Eagle Creek (Bear Creek)	37	0	0	0	0	0	0	0	0	0	0
B	Staney Creek	130	0	50	0	0	0	0	2	0	0	0
B	Thorne River and Lake	61	0	32	0	0	0	0	0	0	0	0
B	Other lakes and streams	122	0	7	6	2	0	0	21	0	0	0
C	Streams	183	0	2	0	2	0	0	1	0	0	0
D	Baranof Island streams and lakes	492	0	27	3	0	0	0	27	0	0	0
D	Chichagof Island streams and lakes	111	0	2	0	0	0	0	11	0	0	0
D	Eva Lake and Stream (Baranof Island)	103	0	0	0	0	0	0	0	0	0	0
D	Nakwasina Sound streams (Baranof Island)	159	0	21	0	0	0	0	1	0	0	0
D	Plotnikof System Stream and Lake (Baranof Island)	53	0	36	0	0	0	0	0	0	0	0
D	Politofski Creek (Baranof Island)	33	0	0	0	0	0	0	0	0	0	0
D	Salmon Creek (Baranof Island)	64	0	0	0	0	0	0	0	0	0	0
D	Sitkoh Creek and Lake (Chichagof Island)	200	0	0	0	0	0	0	7	0	0	0
D	Other lakes and streams	102	1	82	0	0	1	0	7	0	0	0
E	Admiralty Island streams (Admiralty Island)	638	0	144	13	10	0	0	37	0	0	0
E	Other lakes and streams	1,115	0	45	6	0	0	0	4	0	0	0
G	Mud Bay Creek (Chichagof Island)	111	0	0	0	1	0	0	71	0	0	0
G	North Chichagof Island streams	358	0	0	0	1	0	0	68	0	0	0
G	Other lakes and streams	58	0	14	0	0	0	0	0	0	0	0
H	Situk River (above weir)	1,072	9	556	696	0	0	0	108	0	0	0
H	Situk River (below weir)	308	0	67	507	0	0	0	5	0	0	0
H	Tsiu River	2,072	0	4,592	0	0	0	0	2	0	0	0
H	Other lakes and streams	1,681	73	2,591	192	17	0	0	10	0	0	0
	Other lakes and streams in Southeast	442	0	1	0	0	0	0	0	0	0	0
Total Southeast		9,924	83	8,379	1,423	33	1	0	385	0	0	0

Note: Responses with less than 4 businesses are not reported separately, to protect confidentiality of respondents. Data are current as of 04/24/2013.

Appendix G6.—Freshwater logbook angler days and species kept by area and site, Southcentral Alaska, 2012.

Area	Site	Angler Days	Salmon			Cutthroat	Rainbow	Steelhead	Lake	Dolly	Grayling	Pike	Sheefish
			King	Coho	Sockeye				Trout	Varden			
J	Other East Prince William Sound streams	400	0	673	190	0	0	0	0	1	0	0	0
J	Other lakes	33	0	38	0	0	0	0	0	1	0	0	0
J	Other streams	104	0	34	95	0	0	0	0	1	0	0	0
K	Lakes and streams	603	16	332	3	0	2	0	0	13	0	0	0
M	Alexander Lake	21	0	0	1	0	0	0	0	0	0	73	0
M	Chunilna Creek (Clear Creek)	572	4	92	59	0	0	0	0	35	1	0	0
M	Deshka River (Kroto Creek) below weir	1,186	441	274	0	0	1	0	0	0	0	0	0
M	Fish Lake Creek and Fish Lakes (Yentna drainage)	48	3	0	0	0	0	0	0	0	0	177	0
M	Indian Creek (into Yentna near Fish Lakes)	230	0	339	0	0	0	0	0	0	0	12	0
M	Lake Creek	2,825	197	997	322	0	14	0	0	5	6	17	0
M	Peters Creek (Petersville Road)	198	42	207	0	0	3	0	0	0	5	0	0
M	Talachulitna River	789	12	389	128	0	0	0	0	12	2	0	0
M	Talkeetna River	1,242	18	496	513	0	1	0	0	25	3	0	0
M	Yentna River	160	12	82	2	0	0	0	0	0	0	0	0
M	Yentna River drainage (remainder)	1,230	59	613	132	0	1	0	3	21	2	58	0
M	Other streams - Chulitna / East Susitna drainage	315	1	315	3	0	1	0	0	1	0	0	0
M	Other streams - West Susitna drainage	243	18	88	6	0	23	0	0	0	0	21	0
N	Bachatna Creek	105	0	278	0	0	0	0	0	3	0	0	0
N	Big River	233	0	305	171	0	0	0	0	0	0	0	0
N	Big River Lakes	2,728	13	2,610	3,984	0	0	0	0	7	0	0	0
N	Chuitna River	93	0	91	0	0	0	0	0	0	0	0	0
N	Coal Creek (into Beluga Lake)	80	0	55	48	0	0	0	0	7	0	0	0
N	Crescent Lake	874	0	507	885	0	0	0	4	105	0	0	0
N	Crescent River (Grecian River)	154	0	101	70	0	0	0	0	18	0	0	0
N	Kamishak River	330	0	517	0	0	5	0	0	92	0	0	0
N	Kustatan River	1,008	12	2,408	12	0	0	0	0	4	0	0	0
N	Wolverine Creek mouth (by Big River Lakes)	2,150	0	400	4,461	0	0	0	0	10	0	0	0
N	Other lakes and streams	276	0	346	43	0	2	0	0	9	0	0	0
P	Anchor River	86	0	3	0	0	0	0	0	18	0	0	0
P	Deep Creek	151	9	87	0	0	0	0	0	6	0	0	0
P	Hidden Lake	24	0	0	0	0	0	0	0	0	0	0	0

-continued-

Appendix G6.–Page 2 of 4.

Area	Site	Angler Days	Salmon			Lake Dolly							
			King	Coho	Sockeye	Cutthroat	Rainbow	Steelhead	Trout	Varden	Grayling	Pike	Sheefish
P	Kasilof River above Highway	282	1	66	199	0	3	1	0	3	0	0	0
P	Kasilof River below Highway	5,668	699	825	885	0	3	9	0	25	0	0	0
P	Kenai River - Cook Inlet to Soldotna Bridge	13,941	296	5,407	9,922	0	36	0	0	63	1	0	0
P	Kenai River - guided, reach not specified	31	0	1	40	0	0	0	0	0	0	0	0
P	Kenai River - Moose River to Skilak outlet	5,398	2	1,376	8,889	0	55	0	0	50	1	0	0
P	Kenai River - Skilak Inlet to Kenai Lake	7,309	0	145	3,272	0	26	0	0	41	1	0	0
P	Kenai River - Soldotna Bridge to Moose River	2,823	31	395	6,831	0	22	0	0	62	0	0	0
P	Quartz Creek	60	0	0	0	0	0	0	0	5	0	0	0
P	Russian River	337	0	23	197	0	0	0	0	0	0	0	0
P	Other lakes	149	0	0	18	0	8	0	0	0	0	0	0
P	Other streams	314	10	123	0	0	0	0	0	7	0	0	0
Q	American River	48	17	10	0	0	0	0	0	0	0	0	0
Q	Ayakulik River (sometimes called Red River)	480	16	144	153	0	0	0	0	18	0	0	0
Q	Dog Salmon Creek (Frazer River)	364	14	109	709	0	0	0	0	3	0	0	0
Q	Karluk Lake and River above Weir	339	0	15	7	0	0	6	0	26	0	0	0
Q	Olds River	44	10	5	0	0	0	0	0	0	0	0	0
Q	Saltery River	821	0	201	836	0	0	0	0	136	0	0	0
Q	Other remote streams	1,293	7	765	1,078	0	2	2	0	83	0	0	0
Q	Other roadside streams	204	0	39	19	0	0	0	0	11	0	0	0
R	American Creek	823	0	0	0	0	1	0	0	33	0	0	0
R	Becharof System	381	0	21	11	0	0	0	0	29	9	0	0
R	Brooks Lake	42	0	0	0	0	0	0	0	0	0	0	0
R	Brooks River	1,155	0	0	1	0	7	0	0	4	0	0	0
R	Contact Creek	135	0	0	0	0	0	0	0	0	0	0	0
R	Egegik River (Becharof System)	529	2	1,628	79	0	0	0	0	16	0	0	0
R	Naknek Lake	22	0	1	15	0	0	0	0	0	0	0	0
R	Naknek R (downstream from Rapids Camp incl trib)	770	398	455	123	0	2	0	0	12	0	2	0
R	Naknek R (Rapids Camp upstream to Naknek Lk,incl trib)	1,630	77	556	1,653	0	19	0	0	7	2	6	0
R	Naknek River and tributaries	1,664	320	807	331	0	1	0	0	7	0	0	0
R	Swikshak River	135	0	375	10	0	0	0	0	0	0	0	0

-continued-

Area	Site	Angler Days	Salmon			Cutthroat	Rainbow	Steelhead	Lake	Dolly	Grayling	Pike	Sheefish
			King	Coho	Sockeye				Trout	Varden			
R	Ugashik System	308	6	103	2	0	0	0	0	60	0	0	0
R	Other lakes	49	0	0	120	0	0	0	0	130	0	0	0
R	Other streams	2,548	305	1,133	520	0	8	0	0	61	0	0	0
S	Alagnak (Branch) River	2,554	290	493	2,207	0	3	0	36	11	16	1	0
S	Battle River	256	0	0	0	0	0	0	0	0	0	0	0
S	Copper River (Lake Iliamna area)	1,318	0	0	95	0	5	0	0	0	0	1	0
S	Funnel Creek	19	0	0	0	0	0	0	0	0	0	0	0
S	Gibraltar River	330	0	0	9	0	0	0	0	0	0	0	0
S	Iliamna Lake	309	8	9	685	0	6	0	0	0	16	0	0
S	Iliamna River	361	0	0	293	0	20	0	0	0	0	0	0
S	Kijik Lake	48	0	0	0	0	0	0	3	5	1	0	0
S	Kijik River	62	0	0	1	0	0	0	0	0	19	0	0
S	Kontrashibuna Lake	50	0	0	0	0	0	0	1	3	0	0	0
S	Kukaklek River (Big Ku) (into Alagnak)	239	0	0	93	0	0	0	1	0	5	0	0
S	Kulik River	854	0	0	0	0	0	0	0	0	0	0	0
S	Kvichak River	1,080	0	194	1,388	0	4	0	2	16	1	0	0
S	Lake Clark	197	0	0	0	0	0	0	5	0	13	14	0
S	Little Kulik (into Nanuktuk Creek)	58	0	0	0	0	0	0	0	0	0	0	0
S	Lower Talarik Creek	152	0	14	65	0	0	0	0	0	0	0	0
S	Moraine Creek	919	0	0	2	0	0	0	0	0	4	0	0
S	Nanuktuk Creek	159	0	0	0	0	0	0	0	0	0	0	0
S	Nonvianuk River (into Alagnak)	132	0	0	5	0	0	0	20	0	0	0	0
S	Tazimina River	96	0	0	85	0	0	0	3	0	0	0	0
S	Upper Talarik Creek	38	0	13	0	0	0	0	0	0	0	0	0
S	Other lakes and streams	69	0	0	0	0	0	0	0	0	0	0	0
T	Agulowak River	1,262	0	11	1,049	0	0	0	0	63	5	0	0
T	Agulukpak River	732	0	0	2	0	0	0	0	32	7	24	0
T	Aleknagik Lake	186	0	2	8	0	0	0	0	54	0	0	0
T	Mulchatna River	298	23	304	65	0	1	0	2	56	13	1	0

-continued-

Appendix G6.–Page 4 of 4.

Area	Site	Angler Days	Salmon			Cutthroat	Rainbow	Steelhead	Lake	Dolly	Grayling	Pike	Sheefish
			King	Coho	Sockeye				Trout	Varden			
T	Nushagak R - Black Point upstream to Sonar Site	2,459	1,378	453	4	0	0	0	0	6	0	0	0
T	Nushagak River - sonar site to outlet of Mulchatna	3,749	2,351	886	4	0	8	0	0	22	2	0	0
T	Nushagak R- upstream from mouth of Mulchatna R	582	41	60	0	0	0	0	0	0	0	0	0
T	Nushagak R System (incl. Harris Cr and King Salmon R)	119	39	293	0	0	0	0	0	0	1	0	0
T	Togiak River and Lake drainage	1,509	521	1,407	70	0	1	0	0	25	0	0	0
T	Wood River Lakes system	727	0	274	28	0	2	0	0	130	1	23	0
T	Other lakes	57	0	3	0	0	0	0	0	0	0	0	0
T	Other streams	815	14	173	106	0	0	0	1	5	40	0	0
	Other lakes and streams in Southcentral	68	0	30	3	0	0	0	0	9	0	0	0
Total Southcentral		90,450	7,733	32,024	53,315	0	296	18	81	1,723	177	430	0

Note: Responses with less than 4 businesses are not reported separately, to protect confidentiality of respondents. Data are current as of 04/24/2013.

Appendix G7.—Freshwater logbook angler days and species kept by area and site, Arctic-Yukon-Kuskokwim Alaska, 2012.

Area	Site	Angler Days	Salmon			Cutthroat	Rainbow	Steelhead	Lake	Dolly	Grayling	Pike	Sheefish
			King	Coho	Sockeye				Trout	Varden			
I	Gulkana River (West Fork to Highway)	158	46	0	67	0	0	0	0	0	0	0	0
I	Klutina River	979	237	0	757	0	3	0	0	28	22	0	0
I	Other streams	203	18	0	111	0	0	0	0	0	1	0	0
U	Chena River - above dam	110	0	0	0	0	0	0	0	0	0	0	0
U	Other lakes and streams	1,701	0	29	0	0	250	0	0	68	42	0	0
V	Aniak River	526	5	132	1	0	0	0	0	11	21	6	5
V	Goodnews River	1,485	65	836	142	0	0	0	3	74	0	0	0
V	Holitna River	391	0	120	9	0	0	0	0	23	14	44	29
V	Kanektok River (Quinhagak, Chosen)	2,166	165	833	39	0	7	0	0	31	1	0	0
V	Kuskokwim R drainages below and inc. Aniak R	185	0	4	0	0	0	0	0	52	25	0	0
V	Other streams	253	0	13	1	0	0	0	0	0	0	0	2
W	Streams	755	53	827	0	0	0	0	0	67	8	1	0
Y	Streams	913	101	205	0	0	0	0	0	18	67	29	1
	Other lakes and streams in Arctic-Yukon-Kuskokwim	159	0	0	0	0	0	0	0	2	4	0	42
Total Arctic-Yukon-Kuskokwim		9,984	690	2,999	1,127	0	260	0	3	374	205	80	79

Note: Responses with less than 4 businesses are not reported separately, to protect confidentiality of respondents. Data are current as of 04/24/2013.

Appendix G8.—Freshwater logbook angler days and species kept by region, Statewide, 2012.

Region	Angler Days	Salmon			Cutthroat	Rainbow	Steelhead	Lake Trout	Dolly Varden	Grayling	Pike	Sheefish
		King	Coho	Sockeye								
Southeast	9,924	83	8,379	1,423	33	1	0	0	385	0	0	0
Southcentral	90,450	7,733	32,024	53,315	0	296	18	81	1,723	177	430	0
Arctic-Yukon-Kuskokwim	9,984	690	2,999	1,127	0	260	0	3	374	205	80	79
Total	110,358	8,506	43,402	55,865	33	557	18	84	2,482	382	510	79

Note: Data are current as of 04/24/2013.

Appendix G9.—Freshwater logbook angler days and species released by area and site, Southeast Alaska, 2012.

Area	Site	Angler Days	Salmon				Cutthroat	Rainbow	Steelhead	Lake	Dolly	Grayling	Pike	Sheefish
			King	Coho	Sockeye	Trout				Varden				
A	Lakes and streams	219	0	25	0	174	325	11	0	455	0	0	0	
B	Eagle Creek (Bear Creek)	37	0	0	0	15	24	19	0	42	0	0	0	
B	Staney Creek	130	0	5	40	13	2	12	0	85	0	0	0	
B	Thorne River and Lake	61	0	12	0	6	5	47	0	68	0	0	0	
B	Other lakes and streams	122	0	3	17	39	11	9	0	595	0	0	0	
C	Streams	183	0	3	0	26	5	196	0	34	0	0	0	
D	Baranof Island streams and lakes	492	0	17	3	208	31	13	0	897	0	0	0	
D	Chichagof Island streams and lakes	111	0	0	0	28	20	16	0	282	0	0	0	
D	Eva Lake and Stream (Baranof Island)	103	0	0	0	448	34	2	0	87	0	0	0	
D	Nakwasina Sound streams (Baranof Island)	159	0	3	0	1	1	4	0	158	0	0	0	
D	Plotnikof System Stream and Lake (Baranof Island)	53	0	22	1	0	0	14	0	0	0	0	0	
D	Politofski Creek (Baranof Island)	33	0	0	0	0	0	32	0	2	0	0	0	
D	Salmon Creek (Baranof Island)	64	0	0	1	4	55	18	0	98	0	0	0	
D	Sitkoh Creek and Lake (Chichagof Island)	200	0	0	3	499	328	5	0	337	0	0	0	
D	Other lakes and streams	102	0	91	0	33	58	0	0	20	0	0	0	
E	Admiralty Island streams (Admiralty Island)	638	0	52	65	64	21	14	0	2,212	0	0	0	
E	Other lakes and streams	1,115	0	37	6	19	0	23	0	6,142	0	0	0	
G	Mud Bay Creek (Chichagof Island)	111	0	0	0	3	0	0	0	503	0	0	0	
G	North Chichagof Island streams	358	1	0	0	53	0	0	0	1,072	0	0	0	
G	Other lakes and streams	58	0	36	2	1	1	0	0	244	0	0	0	
H	Situk River (above weir)	1,072	16	843	556	0	3	1,552	0	188	0	0	0	
H	Situk River (below weir)	308	0	94	366	0	0	71	0	5	0	0	0	
H	Tsiu River	2,072	0	25,627	3	0	0	7	0	108	0	0	0	
H	Other lakes and streams	1,681	111	5,134	242	225	10	5	0	404	0	0	0	
	Other lakes and streams in Southeast	442	0	5	305	14	0	0	0	516	0	1	0	
Total Southeast		9,924	128	32,009	1,610	1,873	934	2,070	0	14,554	0	1	0	

Note: Responses with less than 4 businesses are not reported separately, to protect confidentiality of respondents. Data are current as of 04/24/2013.

Appendix G10.–Freshwater logbook angler days and species released by area and site, Southcentral Alaska, 2012.

Area	Site	Angler Days	Salmon			Cutthroat	Rainbow	Steelhead	Lake	Dolly	Grayling	Pike	Sheefish
			King	Coho	Sockeye				Trout	Varden			
J	Other East Prince William Sound streams	400	0	905	24	27	0	0	0	171	0	0	0
J	Other lakes	33	0	1	0	0	0	0	0	7	0	0	0
J	Other streams	104	0	9	0	18	0	0	0	1	0	0	0
K	Lakes and streams	603	67	4	0	0	165	0	0	66	0	0	0
M	Alexander Lake	21	0	0	0	0	0	0	0	0	0	95	0
M	Chunilna Creek (Clear Creek)	572	142	9	25	0	172	0	0	239	70	0	0
M	Deshka River (Kroto Creek) below weir	1,186	270	5	1	0	31	0	0	0	2	0	0
M	Fish Lake Creek and Fish Lakes (Yentna drainage)	48	5	0	0	0	0	0	0	0	0	0	0
M	Indian Creek (into Yentna near Fish Lakes)	230	6	14	0	0	16	0	0	0	0	0	0
M	Lake Creek	2,825	193	148	338	0	3,021	0	0	97	697	57	0
M	Peters Creek (Petersville Road)	198	58	194	0	0	13	0	0	0	70	0	0
M	Talachulitna River	789	200	349	44	0	754	0	0	215	220	0	0
M	Talkeetna River	1,242	232	198	351	0	220	0	0	541	82	0	0
M	Yentna River	160	5	25	4	0	38	0	0	1	24	0	0
M	Yentna River drainage (remainder)	1,230	236	822	257	0	1,825	0	15	319	308	6	0
M	Other streams - Chulitna / East Susitna drainage	315	4	129	18	0	62	0	0	5	26	0	0
M	Other streams - West Susitna drainage	243	161	129	7	0	252	0	0	9	96	1	0
N	Bachatna Creek	105	0	110	0	0	2	0	0	58	0	0	0
N	Big River	233	0	255	180	0	0	0	0	6	0	0	0
N	Big River Lakes	2,728	10	351	4,591	0	0	0	0	27	0	0	0
N	Chuitna River	93	22	39	1	0	150	0	0	16	0	0	0
N	Coal Creek (into Beluga Lake)	80	0	39	52	0	30	0	0	197	11	0	0
N	Crescent Lake	874	30	149	470	0	0	0	158	2,325	20	0	0
N	Crescent River (Grecian River)	154	0	12	173	0	0	0	14	375	0	0	0
N	Kamishak River	330	0	593	8	0	11	0	0	3,127	0	0	0
N	Kustatan River	1,008	4	300	10	0	2	0	0	180	1	0	0
N	Wolverine Creek mouth (by Big River Lakes)	2,150	0	90	3,650	0	4	0	0	27	0	0	0
N	Other lakes and streams	276	0	120	8	0	10	0	0	170	0	0	0
P	Anchor River	86	7	6	0	0	0	2	0	805	0	1	0
P	Deep Creek	151	16	10	0	0	1	12	0	7	0	0	0
P	Hidden Lake	24	0	0	0	0	0	0	48	0	0	0	0

-continued-

Appendix G10.–Page 2 of 4.

Area	Site	Angler Days	Salmon			Cutthroat	Rainbow	Steelhead	Lake	Dolly	Grayling	Pike	Sheefish
			King	Coho	Sockeye				Trout	Varden			
P	Kasilof River above Highway	282	8	1	22	0	47	25	0	143	0	0	1
P	Kasilof River below Highway	5,668	613	17	84	0	29	176	4	286	0	0	0
P	Kenai River - Cook Inlet to Soldotna Bridge	13,941	809	121	1,595	0	3,323	0	0	2,222	0	0	0
P	Kenai River - guided, reach not specified	31	0	0	23	0	7	0	0	21	0	0	0
P	Kenai River - Moose River to Skilak outlet	5,398	75	147	3,606	0	11,712	0	22	7,950	163	0	0
P	Kenai River - Skilak Inlet to Kenai Lake	7,309	4	89	2,658	0	21,273	0	51	22,222	323	0	0
P	Kenai River - Soldotna Bridge to Moose R	2,823	85	27	1,014	0	6,060	0	0	2,759	76	0	0
P	Quartz Creek	60	0	0	48	0	45	0	0	651	0	0	0
P	Russian River	337	0	119	212	0	537	0	0	156	0	0	0
P	Other lakes	149	0	0	0	0	309	0	0	2	335	0	0
P	Other streams	314	1	192	0	0	1	0	0	304	17	0	0
Q	American River	48	0	0	0	0	0	0	0	89	0	0	0
Q	Ayakulik River (sometimes called Red River)	480	483	801	1,001	0	0	45	0	193	0	0	0
Q	Dog Salmon Creek (Frazer River)	364	22	67	916	0	2	0	0	26	0	0	0
Q	Karluk Lake and River above Weir	339	315	52	66	0	0	497	0	1,698	0	0	0
Q	Olds River	44	0	15	0	0	0	0	0	7	0	0	0
Q	Saltery River	821	0	276	402	0	4	8	0	1,209	0	0	0
Q	Other remote streams	1,293	121	506	1,381	0	55	49	0	1,914	0	0	0
Q	Roadside streams	204	0	123	10	0	5	0	0	159	0	0	0
R	American Creek	823	0	0	103	0	2,054	0	34	11,253	95	1	0
R	Becharof System	381	18	90	66	0	285	0	0	4,587	808	0	0
R	Brooks Lake	42	0	0	5	0	161	0	9	27	0	0	0
R	Brooks River	1,155	0	0	937	0	7,756	0	4	953	75	1	0
R	Contact Creek	135	54	0	0	0	86	0	0	1,901	361	0	0
R	Egegik River (Becharof System)	529	6	1,596	27	0	1	0	0	49	0	0	0
R	Naknek River (downstream of Rapids Camp)	770	118	107	13	0	414	0	1	60	19	27	0
R	Naknek River (Rapids Camp upstream to Naknek Lk incl trib)	1,630	120	158	627	0	5,395	0	1	655	336	62	0
R	Naknek River and Tributaries	1,664	405	195	319	0	3,543	0	2,508	2,878	1,496	113	0
R	Swikshak River	135	0	574	0	0	0	0	0	7	0	0	0

-continued-

Appendix G10.–Page 3 of 4.

Area	Site	Angler Days	Salmon			Cutthroat	Rainbow	Steelhead	Lake	Dolly	Grayling	Pike	Sheefish
			King	Coho	Sockeye				Trout	Varden			
R	Ugashik System	308	28	107	180	0	0	0	3	3,340	224	2	0
R	Other lakes	49	0	4	127	0	94	0	0	286	30	0	0
R	Other streams	2,548	1,008	5,171	876	0	389	0	0	3,741	28	0	0
S	Alagnak (Branch) River	2,554	878	1,100	1,491	0	1,122	0	428	171	1,095	0	0
S	Battle River	256	0	0	2	0	910	0	1	4	289	2	0
S	Copper River (Lake Iliamna Area)	1,318	0	0	700	0	13,890	0	0	791	14	80	0
S	Funnel Creek	19	0	0	0	0	46	0	0	1	14	0	0
S	Gibraltar River	330	0	0	60	0	2,427	0	0	21	10	0	0
S	Iliamna Lake	309	12	3	1,599	0	1,263	0	0	10	654	0	0
S	Iliamna River	361	0	0	472	0	836	0	0	3,538	0	0	0
S	Kijik Lake	48	0	0	0	0	0	0	25	66	103	0	0
S	Kijik River	62	0	0	11	0	0	0	0	0	806	0	0
S	Kontrashibuna Lake	50	0	0	0	0	0	0	31	87	8	0	0
S	Kukaklek River (Big Ku) (into Alagnak)	239	3	0	207	0	989	0	43	40	26	1	0
S	Kulik River	854	0	5	88	0	8,739	0	350	27	169	0	0
S	Kvichak River	1,080	5	274	2,359	0	5,008	0	1	152	1,469	0	0
S	Lake Clark	197	0	0	0	0	0	0	28	16	517	895	0
S	Little Kulik (into Nanuktuk Creek)	58	0	0	20	0	439	0	0	439	7	0	0
S	Lower Talarik Creek	152	0	76	227	0	940	0	0	0	36	0	0
S	Moraine Creek	919	0	0	416	0	6,584	0	34	71	612	0	0
S	Nanuktuk Creek	159	0	0	5	0	909	0	2	1,166	44	0	0
S	Nonvianuk River (into Alagnak)	132	3	0	35	0	784	0	171	9	5	0	0
S	Tazimina River	96	0	0	169	0	120	0	3	3	241	1	0
S	Upper Talarik Creek	38	0	0	0	0	238	0	0	1	39	0	0
S	Other lakes and streams	69	0	0	31	0	274	0	75	0	93	92	0
T	Agulowak River	1,262	0	2	593	0	4,328	0	0	3,348	2,457	8	0
T	Agulukpak River	732	0	0	100	0	2,778	0	0	3,229	1,750	107	0
T	Aleknagik Lake	186	0	20	8	0	51	0	0	701	48	109	0
T	Mulchatna River	298	96	299	38	0	225	0	60	140	392	0	0

-continued-

Appendix G10.–Page 4 of 4.

Area	Site	Angler Days	Salmon			Cutthroat	Rainbow	Steelhead	Lake Trout	Dolly Varden	Grayling	Pike	Sheefish
			King	Coho	Sockeye								
T	Nushagak River - Black Point upstream to sonar site	2,459	9,546	336	4	0	1	0	0	22	0	0	0
T	Nushagak River - sonar site to outlet of Mulchatna R	3,749	11,370	895	2	0	10	0	2	48	16	2	0
T	Nushagak River - upstream from mouth of Mulchatna R	582	33	100	21	0	1,134	0	0	2,792	2,088	0	0
T	Nushagak River System (incl. Harris Cr and King Salmon R)	119	8	56	4	0	45	0	0	144	64	0	0
T	Togiak River and Lake drainage	1,509	2,140	2,272	51	0	372	0	1	3,236	75	6	0
T	Wood River Lakes system	727	128	122	284	0	539	0	0	3,102	857	597	0
T	Other lakes	57	0	26	8	0	32	0	316	99	28	39	0
T	Other streams	815	185	1,839	506	0	932	0	74	1,771	4,073	28	0
	Other lakes and streams in Southcentral	68	0	18	1	0	59	0	0	6	0	0	0
Total Southcentral		90,450	30,368	23,013	36,054	45	126,402	814	4,526	105,990	24,112	2,333	1

Note: Responses with less than 4 businesses are not reported separately, to protect confidentiality of respondents. Data are current as of 04/24/2013.

Appendix G11.–Freshwater logbook angler days and species released by area and site, Arctic-Yukon-Kuskokwim Alaska, 2012.

Area	Site	Angler Days	Salmon			Cutthroat	Rainbow	Steelhead	Lake	Dolly	Pike	Sheefish	
			King	Coho	Sockeye				Trout	Varden			Grayling
I	Gulkana River (West Fork to Highway)	158	75	0	17	0	5	0	0	0	4	0	0
I	Klutina River	979	339	0	289	0	14	1	0	7	36	0	0
I	Other streams	203	57	0	120	0	200	0	27	0	1707	0	0
U	Chena River - above dam	110	0	0	0	0	0	0	0	0	1013	0	0
U	Other lakes and streams	1,701	0	67	0	0	77	0	0	58	7383	65	0
V	Aniak River	526	39	1,003	30	0	1,401	0	0	3,929	1423	156	16
V	Goodnews River	1,485	479	4,887	208	0	1,033	0	41	7,389	599	0	0
V	Holitna River	391	126	60	78	0	3	0	0	190	231	915	390
V	Kanektok River (Quinhagak, Chosen)	2,166	746	4,223	333	0	6,669	0	3	15,424	1777	0	0
V	Kuskokwim River drainages below and including Aniak R	185	2	114	16	0	517	0	4	1,249	805	7	0
V	Other streams	253	9	327	2	0	462	0	57	1,083	85	2	4
W	Streams	755	189	2,224	0	0	0	0	0	650	2764	27	0
Y	Streams	913	267	609	69	0	0	0	1	542	5517	4033	46
	Other lakes and streams in AKY	159	0	0	0	0	0	0	0	45	236	22	91
Total Arctic-Yukon-Kuskokwim		9,984	2,328	13,514	1,162	0	10,381	1	133	30,566	23,580	5,227	547

Note: Responses with less than 4 businesses are not reported separately, to protect confidentiality of respondents. Data are current as of 04/24/2013.

Appendix G12.–Freshwater logbook angler days and species released by region, Statewide, 2012.

Region	Angler	Salmon			Cutthroat	Rainbow	Steelhead	Lake Trout	Dolly Varden	Grayling	Pike	Sheefish
	Days	King	Coho	Sockeye								
Southeast	9,924	128	32,009	1,610	1,873	934	2,070	0	14,554	0	1	0
Southcentral	90,450	30,368	23,013	36,054	45	126,402	814	4,526	105,990	24,112	2,333	1
Arctic-Yukon-Kuskokwim	9,984	2,328	13,514	1,162	0	10,381	1	133	30,566	23,580	5,227	547
Total	110,358	32,824	68,536	38,826	1,918	137,717	2,885	4,659	151,110	47,692	7,561	548

Note: Data are current as of 04/24/2013.

**APPENDIX H.
SALTWATER LOGBOOK SUMMARIES BY AREA AND
PORT OF OFFLOADING**

Appendix H1.—Saltwater logbook participation and effort by area and port of offloading, Southeast Alaska, 2012.

Area	Port of Offloading	Businesses ^a	Vessels ^a	Trips	Angler Days					
					Resident	Non-Res	Comp	Unknown	Crew	Anglers
A	Ketchikan	62	85	4,964	214	19,947	19	185	10	20,375
A	Knudson Cove	19	20	1,069	24	4,463	7	55	4	4,553
A	Other	8	30	877	11	2,050	1	9	1	2,072
B	Coffman Cove	4	4	121	20	465	7	2	1	495
B	Craig	19	40	1,365	118	4,647	14	8	36	4,823
B	Klawock	5	14	361	10	1,081	0	10	2	1,103
B	Thorne Bay	5	11	336	20	1,259	1	3	0	1,283
B	Other	21	66	3,061	473	11,733	17	43	664	12,930
C	Petersburg	23	30	548	39	2,087	4	5	7	2,142
C	Wrangell	9	10	126	17	443	4	0	3	467
C	Other	4	7	132	3	480	2	0	0	485
D	Apple Island	4	6	201	2	955	0	2	2	961
D	Sitka	86	146	6,764	438	26,786	119	78	280	27,701
D	Other	13	24	682	17	2,294	12	10	7	2,340
E	Angoon	10	20	589	11	2,101	7	31	16	2,166
E	Auke Bay	26	36	1,931	221	7,834	61	47	5	8,168
E	Juneau	23	38	571	15	2,105	9	8	1	2,138
E	Other	7	13	379	9	1,501	11	3	0	1,524
F1	Skagway	5	6	388	15	1,371	5	4	0	1,395
G	Bartlett Cove	4	5	44	6	147	10	0	7	170
G	Elfin Cove	11	25	894	32	3,419	10	12	17	3,490
G	Gustavus	12	22	857	22	3,540	12	9	0	3,583
G	Hoonah	8	11	317	21	1,425	7	46	0	1,499
G	Pelican	9	13	328	12	1,163	1	5	0	1,181
G	Other	6	9	634	8	2,146	3	3	0	2,160
H	Yakutat	8	12	682	128	2,682	30	17	80	2,937
	Other Southeast	5	5	135	12	439	1	5	0	457
Total Southeast		324	595	28,356	1,918	108,563	374	600	1,143	112,598

Note: Participation (number of businesses, vessels, trips and angler days) was determined by number of trips, not targeted species. Responses with less than four businesses are not reported separately, to protect confidentiality of respondents. Data are current as of 04/24/2013.

^a Business and vessel regional and total counts are not additive as they can offload at multiple ports.

Appendix H2.–Saltwater logbook participation and effort by area and port of offloading, Southcentral Alaska, 2012.

Area	Port of Offloading	Businesses ^a	Vessels ^a	Trips	Angler Days					
					Resident	Non-Res	Comp	Unknown	Crew	Anglers
J	Cordova	5	6	68	44	214	5	9	13	285
J	Port Ashton	7	7	42	9	228	0	0	18	255
J	Seward	68	102	4,423	10,551	23,629	195	139	3,022	37,536
J	Valdez	25	26	707	1,840	2,025	15	23	183	4,086
J	Whittier	19	20	619	1,259	2,128	38	20	247	3,692
J	Other	7	9	148	196	673	9	7	83	968
P	Anchor Point	30	32	1,348	1,497	5,599	104	48	842	8,090
P	Deep Creek	49	69	2,899	4,004	11,719	108	39	2,096	17,966
P	Homer	85	108	5,214	8,279	31,979	264	120	3,272	43,914
P	Ninilchik	13	15	447	693	1,635	46	7	369	2,750
P	Seldovia	7	7	99	78	349	2	0	56	485
P	Other	12	16	275	73	857	3	1	80	1,014
Q	Anton Larsen Bay	4	4	4	9	15	0	0	0	24
Q	Kodiak	28	32	835	484	3,343	43	15	562	4,447
Q	Larsen Bay	8	16	481	55	1,760	9	14	144	1,982
Q	Port Lions	7	10	249	68	976	1	3	23	1,071
Q	Raspberry Island	5	5	75	1	288	5	0	1	295
Q	Other	24	39	1,007	245	3,349	19	39	103	3,755
R	Other	12	15	186	67	536	25	4	36	668
Total Southcentral		302	417	19,126	29,452	91,302	891	488	11,150	133,283

Note: Participation (number of businesses, vessels, trips and angler days) was determined by number of trips, not targeted species. Responses with less than 4 businesses are not reported separately, to protect confidentiality of respondents. Data are current as of 04/24/2013.

^a Business and vessel regional and total counts are not additive as they can offload at multiple ports.

Appendix H3.–Saltwater logbook participation and effort by region, statewide, 2012.

Region	Businesses ^a	Vessels ^a	Trips	Angler Days					Anglers
				Resident	Non-Res	Comp	Unknown	Crew	
Southeast	324	595	28,356	1,918	108,563	374	600	1,143	112,598
Southcentral	302	417	19,126	29,452	91,302	891	488	11,150	133,283
Total	621	1,006	47,482	31,370	199,865	1,265	1,088	12,293	245,881

Note: Participation (number of businesses, vessels, trips and angler days) was determined by number of trips, not targeted species. Responses with less than 4 businesses are not reported separately, to protect confidentiality of respondents. Data are current as of 04/24/2013.

^a Business and vessel regional and total counts are not additive as they can offload at multiple ports.

Appendix H4.–Saltwater logbook salmon participation, effort, kept and released by area and port of offloading, Southeast Alaska, 2012.

Area	Port of Offloading	Businesses ^a	Vessels ^a	Trips	Anglers	King				Coho	Sockeye	Other Salmon
						Large		Small				
						Kept	Released	Kept	Released			
A	Ketchikan	62	85	4,964	20,375	1,659	125	214	1,446	12,139	95	20,380
A	Knudson Cove	19	20	1,069	4,553	309	22	47	557	2,226	29	7,066
A	Other	8	30	877	2,072	539	54	30	476	2,210	24	2,073
B	Coffman Cove	4	4	121	495	43	5	33	101	917	1	107
B	Craig	19	40	1,365	4,823	1,819	227	54	56	16,192	51	790
B	Klawock	5	14	361	1,103	554	37	9	22	3,465	1	128
B	Thorne Bay	5	11	336	1,283	54	70	0	307	1,433	13	1,756
B	Other	21	66	3,061	12,930	3,769	742	133	324	27,482	46	6,595
C	Petersburg	23	30	548	2,142	122	12	31	50	480	6	225
C	Wrangell	9	10	126	467	125	9	1	145	152	1	13
C	Other	4	7	132	485	21	2	0	6	872	0	73
D	Apple Island	4	6	201	961	317	17	5	11	1,207	0	62
D	Sitka	86	146	6,764	27,701	14,300	2,195	155	1,562	51,205	375	4,259
D	Other	13	24	682	2,340	479	69	23	176	1,816	183	562
E	Angoon	10	20	589	2,166	269	32	7	212	1,267	15	509
E	Auke Bay	26	36	1,931	8,168	526	33	102	551	1,780	67	2,855
E	Juneau	23	38	571	2,138	75	11	11	97	352	16	252
E	Other	7	13	379	1,524	56	19	2	14	732	7	1,409
F1	Skagway	5	6	388	1,395	174	49	0	737	0	0	2
G	Bartlett Cove	4	5	44	170	7	3	0	1	47	1	46
G	Elfin Cove	11	25	894	3,490	530	70	15	62	2,859	16	941
G	Gustavus	12	22	857	3,583	172	17	2	40	1,429	46	548
G	Hoonah	8	11	317	1,499	59	10	2	65	63	1	143
G	Pelican	9	13	328	1,181	301	35	4	48	1,191	17	98
G	Other	6	9	634	2,160	59	8	5	24	705	10	1,327
H	Yakutat	8	12	682	2,937	203	17	8	13	1,029	1	7
	Other Southeast	5	5	135	457	33	2	0	261	0	0	11
	Total Southeast	324	595	28,356	112,598	26,574	3,892	893	7,364	133,250	1,022	52,237

Note: Participation (number of businesses, vessels, trips and angler days) was determined by number of trips, not targeted species. Responses with less than 4 businesses are not reported separately, to protect confidentiality of respondents. Data are current as of 04/24/2013.

^a Business and vessel regional and total counts are not additive as they can offload at multiple ports.

Appendix H5.—Saltwater logbook salmon participation, effort, kept and released by area and port of offloading, Southcentral Alaska, 2012.

Area	Port of Offloading	Businesses ^a	Vessels ^a	Trips	Anglers	King				Coho	Sockeye	Other Salmon
						Large		Small				
						Kept	Released	Kept	Released			
J	Cordova	5	6	68	285	1	2	4	0	54	0	65
J	Port Ashton	7	7	42	255	22	0	0	0	93	3	5
J	Seward	68	102	4,423	37,536	366	103	165	29	25,448	430	4,342
J	Valdez	25	26	707	4,086	19	1	10	8	1,146	28	158
J	Whittier	19	20	619	3,692	5	0	5	5	401	198	266
J	Other	7	9	148	968	8	1	5	0	327	35	139
P	Anchor Point	30	32	1,348	8,090	67	22	13	10	9	2	62
P	Deep Creek	49	69	2,899	17,966	205	8	61	19	9	14	33
P	Homer	85	108	5,214	43,914	1,428	66	386	91	816	205	1,526
P	Ninilchik	13	15	447	2,750	24	2	3	4	5	0	2
P	Seldovia	7	7	99	485	18	0	7	0	2	0	22
P	Other	12	16	275	1,014	66	12	10	0	109	0	85
Q	Anton Larsen Bay	4	4	4	24	0	0	0	0	0	0	0
Q	Kodiak	28	32	835	4,447	1,492	31	478	17	1,309	26	274
Q	Larsen Bay	8	16	481	1,982	190	38	111	62	576	2	82
Q	Port Lions	7	10	249	1,071	215	0	92	2	288	128	54
Q	Raspberry Island	5	5	75	295	40	1	30	0	72	0	12
Q	Other	24	39	1,007	3,755	352	13	77	20	1,545	418	329
R	Other	12	15	186	668	1	0	0	8	22	1	3
Total Southcentral		302	417	19,126	133,283	4,519	300	1,457	275	32,231	1,490	7,459

Note: Participation (number of businesses, vessels, trips and angler days) was determined by number of trips, not targeted species. Responses with less than 4 businesses are not reported separately, to protect confidentiality of respondents. Data are current as of 04/24/2013.

^a Business and vessel regional and total counts are not additive as they can offload at multiple ports.

Appendix H6.–Saltwater logbook salmon participation, effort, kept and released by region, statewide, 2012.

Region	Businesses ^a	Vessels ^a	Trips	Anglers	King				Coho	Sockeye	Other Salmon
					Large		Small				
					Kept	Released	Kept	Released			
Southeast	324	595	28,356	112,598	26,574	3,892	893	7,364	133,250	1,022	52,237
Southcentral	302	417	19,126	133,283	4,519	300	1,457	275	32,231	1,490	7,459
Total	621	1,006	47,482	245,881	31,093	4,192	2,350	7,639	165,481	2,512	59,696

Note: Participation (number of businesses, vessels, trips and angler days) was determined by number of trips, not targeted species. Responses with less than 4 businesses are not reported separately, to protect confidentiality of respondents. Data are current as of 04/24/2013.

^a Business and vessel regional and total counts are not additive as they can offload at multiple ports.

Appendix H7.—Saltwater logbook bottomfish participation, effort, kept and released by area and port of offloading, Southeast Alaska, 2012.

Area	Port of Offloading	Businesses ^a	Vessels ^a	Trips	Anglers	Rockfish												
						Halibut		Lingcod		Pelagic		Yelloweye		Non-Pelagic		Sablefish		Shark
						Kept	Released	Kept	Released	Kept	Released	Kept	Released	Kept	Released	Kept	Released	Kept
A	Ketchikan	62	85	4,964	20,375	4,123	2,487	334	152	1,983	275	2,076	123	4,680	510	11	1	3
A	Knudson Cove	19	20	1,069	4,553	246	41	21	2	93	1	36	1	159	5	0	0	0
A	Other	8	30	877	2,072	865	160	18	2	538	16	159	1	480	9	2	0	0
B	Coffman Cove	4	4	121	495	369	205	2	0	92	2	16	2	173	2	0	0	0
B	Craig	19	40	1,365	4,823	3,955	3,052	765	180	6,015	180	865	46	1,765	73	3	0	0
B	Klawock	5	14	361	1,103	994	860	89	33	1,151	21	87	8	280	10	2	0	0
B	Thorne Bay	5	11	336	1,283	542	506	94	58	356	28	146	18	658	56	2	0	0
B	Other	21	66	3,061	12,930	8,129	6,202	1,355	551	8,376	857	1,495	69	3,433	508	12	0	0
C	Petersburg	23	30	548	2,142	1,386	3,280	26	43	536	14	80	4	174	3	8	0	0
C	Wrangell	9	10	126	467	82	39	6	0	35	4	17	7	26	10	0	0	0
C	Other	4	7	132	485	280	328	47	63	765	37	75	28	147	0	0	0	0
D	Apple Island	4	6	201	961	388	249	52	42	1,571	34	96	15	463	7	26	0	0
D	Sitka	86	146	6,764	27,701	15,054	10,054	2,156	4,119	44,205	1,768	4,554	1,120	9,767	758	772	4	5
D	Other	13	24	682	2,340	1,273	776	83	70	829	323	257	32	520	55	56	0	0
E	Angoon	10	20	589	2,166	1,592	1,408	13	10	672	38	141	1	1,390	217	347	19	0
E	Auke Bay	26	36	1,931	8,168	1,785	1,060	1	3	698	29	44	3	1,042	34	3,922	23	3
E	Juneau	23	38	571	2,138	251	263	4	11	247	54	58	9	121	25	0	1	0
E	Other	7	13	379	1,524	1,129	422	100	145	3,388	39	296	22	638	7	0	0	0
F1	Skagway	5	6	388	1,395	0	0	0	0	0	0	0	0	0	0	0	0	0
G	Bartlett Cove	4	5	44	170	93	136	2	0	0	0	0	0	1	0	0	0	0
G	Elfin Cove	11	25	894	3,490	2,553	2,922	392	1,129	4,906	145	575	174	1,350	84	10	0	0
G	Gustavus	12	22	857	3,583	2,736	5,604	172	145	1,125	27	233	14	283	21	0	0	0
G	Hoonah	8	11	317	1,499	572	2,011	0	1	8	1	4	0	49	2	0	0	0
G	Pelican	9	13	328	1,181	991	1,096	93	223	362	112	141	47	77	46	11	0	0
G	Other	6	9	634	2,160	2,566	3,762	6	9	72	18	20	0	12	4	0	0	0
H	Yakutat	8	12	682	2,937	3,501	550	831	230	2,373	32	113	3	288	9	0	0	0
	Other Southeast	5	5	135	457	147	415	0	0	0	0	0	0	0	0	0	0	0
Total Southeast		324	595	28,356	112,598	55,602	47,888	6,662	7,221	80,396	4,055	11,584	1,747	27,976	2,455	5,184	48	11

Note: Participation (number of businesses, vessels, trips and angler days) was determined by number of trips, not targeted species. Responses with less than 4 businesses are not reported separately, to protect confidentiality of respondents. Data are current as of 04/24/2013.

^a Business and vessel regional and total counts are not additive as they can offload at multiple ports.

Appendix H8.—Saltwater logbook bottomfish participation, effort, kept and released by area and port of offloading, Southcentral Alaska, 2012.

Area	Port of Offloading	Businesses ^a	Vessels ^a	Trips	Anglers	Rockfish												
						Halibut		Lingcod		Pelagic		Yelloweye		Non-Pelagic		Sablefish		Shark
						Kept	Released	Kept	Released	Kept	Released	Kept	Released	Kept	Released	Kept	Released	Kept
J	Cordova	5	6	68	285	284	130	42	48	55	5	117	10	70	30	0	0	0
J	Port Ashton	7	7	42	255	366	140	87	12	245	1	74	0	18	0	0	0	0
J	Seward	68	102	4,423	37,536	48,179	19,182	5,753	2,279	30,635	1,275	5,405	108	5,176	231	265	0	3
J	Valdez	25	26	707	4,086	4,798	2,772	1,233	323	1,627	48	1,122	56	409	18	4	2	0
J	Whittier	19	20	619	3,692	4,604	2,154	407	202	1,694	376	497	7	486	73	2	3	0
J	Other	7	9	148	968	293	43	20	25	1,338	24	253	14	112	22	1	1	0
P	Anchor Point	30	32	1,348	8,090	15,227	14,065	334	59	623	24	69	2	90	0	0	0	0
P	Deep Creek	49	69	2,899	17,966	34,159	45,161	80	7	367	26	73	8	0	1	0	0	3
P	Homer	85	108	5,214	43,914	80,572	120,967	2,673	886	10,368	561	1,279	68	562	57	1	0	2
P	Ninilchik	13	15	447	2,750	5,098	8,731	16	0	34	2	1	0	1	0	0	0	0
P	Seldovia	7	7	99	485	844	1,103	8	1	4	0	21	4	19	1	0	0	1
P	Other	12	16	275	1,014	1,680	2,947	0	4	38	1	1	1	0	0	0	0	0
Q	Anton Larsen Bay	4	4	4	24	30	5	1	0	7	0	4	0	0	0	0	0	0
Q	Kodiak	28	32	835	4,447	6,559	3,028	776	96	8,758	887	194	3	326	54	0	0	0
Q	Larsen Bay	8	16	481	1,982	2,837	6,422	83	28	851	196	268	58	72	17	0	0	0
Q	Port Lions	7	10	249	1,071	1,162	319	222	5	1,442	54	162	0	129	1	0	0	0
Q	Raspberry Island	5	5	75	295	407	506	9	0	118	83	5	1	3	0	0	0	0
Q	Other	24	39	1,007	3,755	2,998	2,840	928	359	2,508	1,952	370	57	455	181	160	1	1
R	Other	12	15	186	668	966	1,174	7	13	112	134	0	0	22	21	9	9	0
Total Southcentral		302	417	19,126	133,283	211,063	231,689	12,679	4,347	60,824	5,649	9,915	397	7,950	707	442	16	10

Note: Participation (number of businesses, vessels, trips and angler days) was determined by number of trips, not targeted species. Responses with less than 4 businesses are not reported separately, to protect confidentiality of respondents. Data are current as of 04/24/2013.

^a Business and vessel regional and total counts are not additive as they can offload at multiple ports.

Appendix H9.—Saltwater logbook bottomfish participation, effort, kept and released by region, statewide, 2012.

Region	Businesses ^a	Vessels ^a	Trips	Anglers	Rockfish												
					Halibut		Lingcod		Pelagic		Yelloweye		Non-Pelagic		Sablefish		Shark
					Kept	Released	Kept	Released	Kept	Released	Kept	Released	Kept	Released	Kept	Released	Kept
Southeast	324	595	28,356	112,598	55,602	47,888	6,662	7,221	80,396	4,055	11,584	1,747	27,976	2,455	5,184	48	11
Southcentral	302	417	19,126	133,283	211,063	231,689	12,679	4,347	60,824	5,649	9,915	397	7,950	707	442	16	10
Total	621	1,006	47,482	245,881	266,665	279,577	19,341	11,568	141,220	9,704	21,499	2,144	35,926	3,162	5,626	64	21

Note: Participation (number of businesses, vessels, trips and angler days) was determined by number of trips, not targeted species. Responses with less than 4 businesses are not reported separately, to protect confidentiality of respondents. Data are current as of 04/24/2013.

^a Business and vessel regional and total counts are not additive as they can offload at multiple ports.