

**Fishery Data Series No. 12-27**

---

---

**Participation, Effort, and Harvest in the Sport Fish  
Business/Guide Licensing and Logbook Programs,  
2011**

by

**Dora Sigurdsson**

and

**Bob Powers**

July 2012

---

Alaska Department of Fish and Game

Divisions of Sport Fish and Commercial Fisheries



## Symbols and Abbreviations

The following symbols and abbreviations, and others approved for the *Système International d'Unités* (SI), are used without definition in the following reports by the Divisions of Sport Fish and of Commercial Fisheries: Fishery Manuscripts, Fishery Data Series Reports, Fishery Management Reports, and Special Publications. All others, including deviations from definitions listed below, are noted in the text at first mention, as well as in the titles or footnotes of tables, and in figure or figure captions.

<b>Weights and measures (metric)</b>		<b>General</b>		<b>Mathematics, statistics</b>	
centimeter	cm	Alaska Administrative Code	AAC	<i>all standard mathematical signs, symbols and abbreviations</i>	
deciliter	dL	all commonly accepted abbreviations	e.g., Mr., Mrs., AM, PM, etc.	alternate hypothesis	$H_A$
gram	g	all commonly accepted professional titles	e.g., Dr., Ph.D., R.N., etc.	base of natural logarithm	$e$
hectare	ha	at	@	catch per unit effort	CPUE
kilogram	kg	compass directions:		coefficient of variation	CV
kilometer	km	east	E	common test statistics	(F, t, $\chi^2$ , etc.)
liter	L	north	N	confidence interval	CI
meter	m	south	S	correlation coefficient	
milliliter	mL	west	W	(multiple)	R
millimeter	mm	copyright	©	correlation coefficient	
		corporate suffixes:		(simple)	r
<b>Weights and measures (English)</b>		Company	Co.	covariance	cov
cubic feet per second	ft <sup>3</sup> /s	Corporation	Corp.	degree (angular)	°
foot	ft	Incorporated	Inc.	degrees of freedom	df
gallon	gal	Limited	Ltd.	expected value	$E$
inch	in	District of Columbia	D.C.	greater than	>
mile	mi	et alii (and others)	et al.	greater than or equal to	≥
nautical mile	nmi	et cetera (and so forth)	etc.	harvest per unit effort	HPUE
ounce	oz	exempli gratia		less than	<
pound	lb	(for example)	e.g.	less than or equal to	≤
quart	qt	Federal Information Code	FIC	logarithm (natural)	ln
yard	yd	id est (that is)	i.e.	logarithm (base 10)	log
		latitude or longitude	lat. or long.	logarithm (specify base)	log <sub>2</sub> , etc.
<b>Time and temperature</b>		monetary symbols (U.S.)	\$, ¢	minute (angular)	'
day	d	months (tables and figures): first three letters	Jan, ..., Dec	not significant	NS
degrees Celsius	°C	registered trademark	®	null hypothesis	$H_0$
degrees Fahrenheit	°F	trademark	™	percent	%
degrees kelvin	K	United States (adjective)	U.S.	probability	P
hour	h	United States of America (noun)	USA	probability of a type I error (rejection of the null hypothesis when true)	$\alpha$
minute	min	U.S.C.	United States Code	probability of a type II error (acceptance of the null hypothesis when false)	$\beta$
second	s	U.S. state	use two-letter abbreviations (e.g., AK, WA)	second (angular)	"
<b>Physics and chemistry</b>				standard deviation	SD
all atomic symbols				standard error	SE
alternating current	AC			variance	
ampere	A			population sample	Var
calorie	cal			sample	var
direct current	DC				
hertz	Hz				
horsepower	hp				
hydrogen ion activity (negative log of)	pH				
parts per million	ppm				
parts per thousand	ppt, ‰				
volts	V				
watts	W				

***FISHERY DATA SERIES NO. 12-27***

**PARTICIPATION, EFFORT, AND HARVEST IN THE SPORT FISH  
BUSINESS/GUIDE LICENSING AND LOGBOOK PROGRAMS, 2011**

by

Dora Sigurdsson

and

Bob Powers

*Division of Sport Fish Research and Technical Services, Anchorage*

Alaska Department of Fish and Game  
Division of Sport Fish, Research and Technical Services  
333 Raspberry Road, Anchorage, Alaska, 99518-1599

July 2012

ADF&G Fishery Data Series was established in 1987 for the publication of Division of Sport Fish technically oriented results for a single project or group of closely related projects, and in 2004 became a joint divisional series with the Division of Commercial Fisheries. Fishery Data Series reports are intended for fishery and other technical professionals and are available through the Alaska State Library and on the Internet: <http://www.adfg.alaska.gov/sf/publications/>. This publication has undergone editorial and peer review.

*Dora Sigurdsson and Bob Powers*  
*Alaska Department of Fish and Game, Division of Sport Fish, Research and Technical Services*  
*333 Raspberry Road, Anchorage, AK 99518-1599, USA*

*This document should be cited as:*

*Sigurdsson, D. and B. Powers. 2012. Participation, effort, and harvest in the sport fish business/guide licensing and logbook programs, 2011. Alaska Department of Fish and Game, Fishery Data Series No. 12-27 Anchorage.*

The Alaska Department of Fish and Game (ADF&G) administers all programs and activities free from discrimination based on race, color, national origin, age, sex, religion, marital status, pregnancy, parenthood, or disability. The department administers all programs and activities in compliance with Title VI of the Civil Rights Act of 1964, Section 504 of the Rehabilitation Act of 1973, Title II of the Americans with Disabilities Act (ADA) of 1990, the Age Discrimination Act of 1975, and Title IX of the Education Amendments of 1972.

**If you believe you have been discriminated against in any program, activity, or facility please write:**

ADF&G ADA Coordinator, P.O. Box 115526, Juneau, AK 99811-5526  
U.S. Fish and Wildlife Service, 4401 N. Fairfax Drive, MS 2042, Arlington, VA 22203  
Office of Equal Opportunity, U.S. Department of the Interior, 1849 C Street NW MS 5230, Washington DC 20240

**The department's ADA Coordinator can be reached via phone at the following numbers:**

(VOICE) 907-465-6077, (Statewide Telecommunication Device for the Deaf) 1-800-478-3648,  
(Juneau TDD) 907-465-3646, or (FAX) 907-465-6078

**For information on alternative formats and questions on this publication, please contact:**

ADF&G Division of Sport Fish, Research and Technical Services, 333 Raspberry Road, Anchorage AK 99518 (907) 267-2375.

# TABLE OF CONTENTS

	<b>Page</b>
LIST OF TABLES.....	ii
LIST OF FIGURES.....	ii
LIST OF APPENDICES.....	iii
ABSTRACT.....	1
BACKGROUND.....	1
Guide and Business Registration and Licensing.....	1
Logbooks.....	2
Vessel Registration.....	5
METHODS.....	5
Guide and Business Licensing.....	5
Logbook Data Collection.....	6
Saltwater Logbook Forms.....	6
Freshwater Logbook Forms.....	7
Vessel Registration.....	8
Logbook Outreach, validation and Verification.....	8
Outreach.....	8
Validation.....	9
Verification.....	11
RESULTS.....	11
Guide and Business Licensing.....	11
Vessels.....	13
Saltwater.....	13
Freshwater.....	14
Trips.....	15
Saltwater.....	15
Freshwater.....	16
Logbook Trip Effort and Harvest.....	16
Saltwater.....	16
Freshwater.....	17
DISCUSSION.....	21
Guide and Business Licensing.....	21
Logbooks.....	21
ACKNOWLEDGEMENTS.....	22
REFERENCES CITED.....	23
APPENDIX A SPORT FISH BUSINESS OWNER/GUIDE LICENSE APPLICATION.....	25
APPENDIX B SALTWATER LOGBOOK FORM.....	29
APPENDIX C FRESHWATER LOGBOOK FORMS.....	33
APPENDIX D VESSEL REGISTRATION FORMS, DECALS AND TAGS.....	37
APPENDIX E SALTWATER EDITING RESULTS.....	41
APPENDIX F FRESHWATER EDITING RESULTS.....	43
APPENDIX G FRESHWATER LOGBOOK SUMMARIES BY AREA AND SITE.....	45
APPENDIX H SALTWATER LOGBOOK SUMMARIES BY AREA AND PORT OF OFFLOADING.....	67

## LIST OF TABLES

<b>Table</b>		<b>Page</b>
1.	Division of Sport Fish regions and management areas. ....	3
2.	Number of licensed businesses and guides by region, 2007–2011.....	12
3.	Number of active saltwater businesses and guides by region, 2007–2011.....	13
4.	Number of active freshwater businesses and guides by region, 2007–2011. ....	13
5.	Number of registered and active saltwater vessels by region, 2007–2011.....	14
6.	Number of active saltwater vessels that made at least one trip in each target category, by region, 2007–2011.....	14
7.	Number of registered freshwater vessels by year and region <sup>a</sup> , 2007–2011.....	15
8.	Number of saltwater trips by targeted species by region, 2007–2011.....	15
9.	Number of freshwater trips by region, 2007–2011.....	16
10.	Saltwater and freshwater trips and angler days by region, 2007–2011.....	17
11.	Saltwater salmon effort and harvest by region and angler type, 2011.....	18
12.	Saltwater bottomfish effort and harvest by region and angler type, 2011.....	19
13.	Freshwater effort and harvest by species, region and angler type, 2011.....	20

## LIST OF FIGURES

<b>Figure</b>		<b>Page</b>
1.	Map of Alaska and Division of Sport Fish regions and management areas. ....	4
2.	International Pacific Halibut Commission (IPHC) regulatory areas. ....	5

# LIST OF APPENDICES

Appendix	Page
A1. Sport fish business owner/guide license application, 2011.....	26
B1. Saltwater charter logbook form, 2011.....	30
C1. Freshwater guide logbook from, 2011.....	34
D1. Saltwater sport fish charter logbook sign-out and vessel registration form, 2011.....	38
D2. Freshwater sport fish guide vessel registration form, 2011.....	39
D3. Vessel decal, 2011.....	40
D4. Vessel tab, 2011.....	40
E1. Saltwater editing results, 2011.....	42
F1. Freshwater editing results, 2011.....	44
G1. Freshwater logbook participation by area and site, Southeast Alaska, 2011.....	46
G2. Freshwater logbook participation by area and site, Southcentral Alaska, 2011.....	47
G3. Freshwater logbook participation by area and site, Arctic-Yukon-Kuskokwim Alaska, 2011.....	51
G4. Freshwater logbook participation by region, Statewide, 2011.....	52
G5. Freshwater logbook angler days and species kept by area and site, Southeast Alaska, 2011.....	53
G6. Freshwater logbook angler days and species kept by area and site, Southcentral Alaska, 2011.....	54
G7. Freshwater logbook angler days and species kept by area and site, Arctic-Yukon-Kuskokwim Alaska, 2011.....	58
G8. Freshwater logbook angler days and species kept by region, Statewide, 2011.....	59
G9. Freshwater logbook angler days and species released by area and site, Southeast Alaska, 2011.....	60
G10. Freshwater logbook angler days and species released by area and site, Southcentral Alaska, 2011.....	61
G11. Freshwater logbook angler days and species released by area and site, Arctic-Yukon-Kuskokwim Alaska, 2011.....	65
G12. Freshwater logbook angler days and species released by region, Statewide, 2011.....	66
H1. Saltwater logbook salmon participation, effort, kept and released by area and port of offloading, Southeast Alaska, 2011.....	68
H2. Saltwater logbook salmon participation, effort, kept, and released by area and port of offloading, Southcentral Alaska, 2011.....	69
H3. Saltwater logbook salmon participation, effort, kept and released by region, Statewide, 2011.....	70
H4. Saltwater logbook bottomfish participation, effort, kept and released by area and port of offloading, Southeast Alaska, 2011.....	71
H5. Saltwater logbook bottomfish participation, effort, kept, and released by area and port of offloading, Southcentral Alaska, 2011.....	72
H6. Saltwater logbook bottomfish participation, effort, kept, and released by region, Statewide, 2011.....	73





## **ABSTRACT**

In 2011, 1,372 sport fishing businesses and 2,961 guides licensed under the Alaska Department of Fish and Game guide and business licensing program, signifying intent to provide sport fishing services in Alaska. Of the 1,372 sport fishing businesses registered in 2011, 1,236 were combination owner/guide licenses. Based on the 2011 physical addresses of both the businesses and guides, 88% of the businesses were residents of Alaska, and 12% were from other residency strata (defined as nonresidents), 70% of the guides were residents and 30% were nonresidents.

Of the 2,175 saltwater logbooks issued in 2011, 1,771 were activated, and of the 2,286 freshwater logbooks issued in 2011, 1,498 were activated. Of those businesses that submitted logbook information in 2011, 56% offered saltwater services, and 44% offered freshwater guided services. In 2011, logbook records show that 1,079 saltwater vessels were active. Of those active saltwater vessels, 57% were active in Southeast Alaska and 43% were active in Southcentral Alaska.

A total of 48,491 saltwater charter trips and 246,369 saltwater angler days of fishing occurred in 2011. Of the statewide saltwater trips, 81% of the saltwater angler days were nonresidents, 14% were residents and 5% were crew, comped fishing (nonpaying anglers) or unknown residency. In freshwater, 40,130 trips and 119,296 angler days occurred in 2011. Of the statewide freshwater trips, 89% of the angler days were nonresidents, 10% were residents, and 1% were crew, comped fishing or unknown residency.

2011 saltwater salmon harvests show that coho and king salmon made up 69% and 12% of the total salmon harvest respectively statewide. Saltwater bottomfish harvests in 2011 show that Pacific halibut were the predominant species with 56% of the total saltwater bottomfish harvest statewide. In freshwater, coho salmon were the predominant harvested species, followed by sockeye and then king salmon.

Key words: Sport fishing, guide and business registration, freshwater logbook, saltwater logbook, participation, effort, harvest, sport fishing vessel, Pacific halibut, salmon, bottomfish, Southeast Alaska, Southcentral Alaska

## **BACKGROUND**

The Alaska Department of Fish and Game (ADF&G) Division of Sport Fish (DSF) has operated a program since 1998 to register and license both sport fishing guides and sport fishing guide businesses. Saltwater information on sport fishing participation, effort, and harvest has been collected since 1998. Freshwater information on fishing participation, effort and harvest has been collected since 2005. This report briefly summarizes the approach, history, and results of this program for 2011.

### **GUIDE AND BUSINESS REGISTRATION AND LICENSING**

The activities of the guided sport fishing industry in Alaska had shown a steady decrease in recent years, the number of trips have been down steadily going down since 2009 with implications to fish allocation and management decisions. Resolution of related issues was hampered by a lack of information regarding the industry and its impact on fishery resources in many parts of Alaska. The sport fishing guide and business registration and licensing programs were designed to provide a comprehensive system to better define this diverse industry throughout Alaska. A brief history of the statewide registration and licensing process follows.

Beginning in May 1995 the owner(s) of any business that engaged in sport fish guiding of anglers anywhere in Alaska were required to register their business information, employees acting as sport fishing guides for the business, and list all vessels used for guiding. In 1997, sport fishing guides were required to register and provide information about the employing business (Dean 2001; Dean and Howe 1999).

In 1998, the Alaska Board of Fisheries (BOF) adopted new statewide sport fishing guide registration regulations and definitions during their February Statewide Finfish meeting in Girdwood, Alaska (5 AAC 75.075: *Sport Fishing Services and Sport Fishing Guide Services; License Requirements; Regulations of Activities*). It should be stressed that this was a registration process, not a licensing process. No fees were required and businesses and guides were allowed to provide services in any area of the state, assuming other regulatory requirements were met. In 1998, ADF&G continued to register guide businesses and guides, but stopped registering charter vessels, because the Commercial Fisheries Entry Commission (CFEC) implemented a licensing program for all vessels to be used for guided sport fishing. From 1998 through 2004, ADF&G continued to register sport fishing businesses and sport fishing guides.

On May 11, 2004, the Alaska Legislature adopted House Bill 452 (HB 452), that established licensing requirements for sport fishing guide business owners and sport fishing guides on a statewide basis. This bill was created to establish minimum professional standards required of both freshwater and saltwater sport fish guides and business owners before a license could be obtained. The standards were established to protect consumers and to promote the viability and legitimacy of a professional sport fish guide industry. Businesses providing sport fish guided services were now required to obtain a State of Alaska Occupational Business License and hold liability insurance with a minimum of \$300,000 coverage for all incidents in a year (AS 16.40.260). Licensed sport fishing guides were required (1) to be citizens of the United States, Canada, or Mexico, (2) hold a current first aid card, (3) have a current year Alaska sport fishing license and (4) have a valid U.S. Coast Guard operator's license if they were to operate a motorized vessel in navigable waters. License application forms and the information collected have remained consistent in design since 2006 (Sigurdsson and Powers 2009-2011).

## **LOGBOOKS**

In February, 1998 the BOF adopted regulations (5 AAC 75.076) requiring logbooks for saltwater charter vessels statewide. Information on the amounts and locations of charter activity and actual participation and harvest by individual vessels and businesses was needed by the BOF for allocation and management of Chinook salmon *Oncorhynchus tshawytscha*, rockfish *Sebastes* spp., and lingcod *Ophiodon elongatus*, and by the North Pacific Fisheries Management Council (NPFMC) for allocation of Pacific halibut *Hippoglossus stenolepis*. To meet these information needs ADF&G implemented a saltwater sport fishing charter vessel logbook program for DSF Region I, Southeast Alaska (Southeast), and Region II, Southcentral Alaska (Southcentral; Table 1; Figure 1).

In 1999, the NPFMC was considering proposals to limit the guided sport halibut harvest. Their concerns were: (1) that growth in this fishery was reallocating resources away from the individual fishing quota (IFQ) commercial longline fishery, and (2) that in some areas there was overcapitalization and localized depletion of the halibut resource. NPFMC endorsed a two-prong approach to resolve the perceived impact of increased guided charter halibut fishing. The first was establishment of guideline harvest limits (GHL) for International Pacific Halibut Commission (IPHC) Areas 2C and 3A (Figure 2), and the second was a process to establish local area management plans for halibut fisheries in coastal communities.

Since 1998, the logbook design has undergone annual revisions, driven primarily by changes or improvements in the collection of halibut, lingcod and rockfish data through the logbook program, Statewide Harvest Survey (SWHS), and expanded port sampling programs. House Bill

452, adopted in 2004, not only established new licensing requirements, but also established a logbook reporting requirement for all freshwater businesses in addition to the existing saltwater reporting requirements. For various reasons, both technical and policy-based, information on halibut harvests was not collected from 2002 through 2005. The collection of halibut data was resumed in 2006. In addition, the 2006 logbook was redesigned to require reporting of angler license numbers and the harvest and release numbers by angler in an effort to improve reporting and facilitate evaluation of the quality of logbook data.

The data from logbooks are compiled to show where fishing effort occurs, the extent of participation, and the species and numbers of fish kept and released by individual clients. This information is used for regulation and the development and management of fisheries, for project evaluation, and for formulation of department policies and priorities that reflect angler needs, concerns, and preferences. It also provides ADF&G with a tool to promote management of Alaska’s resources for sustained yield.

Table 1.–Division of Sport Fish regions and management areas.

Regions	
SE	Southeast Alaska
SC	Southcentral Alaska
AYK	Arctic-Yukon-Kuskokwim
Areas	
Southeast Alaska	
A	Ketchikan
B	Prince of Wales Island
C	Kake, Petersburg, Wrangell, Stikine
D	Sitka
E	Juneau
F	Haines-Skagway
G	Glacier Bay
H	Yakutat
Southcentral Alaska	
J	North Gulf Coast/Prince William Sound
K	Knik Arm Drainage
L	Anchorage
M	Susitna River Drainage
N	West Side Cook Inlet
P	Kenai Peninsula
Q	Kodiak
R	Naknek River Drainage/Alaska Peninsula Area
S	Kvichak River Drainage
T	Nushagak, Wood River and Togiak
Arctic-Yukon-Kuskokwim	
I	Upper Copper River Drainage
U	Tanana River Drainage
V	Kuskokwim River/Kuskokwim Bay Drainages
W	Norton Sound/Seward Peninsula
X	Northwest Alaska
Y	Yukon River Drainage
Z	North Slope/Brooks Range



Figure 1.—Map of Alaska and Division of Sport Fish regions and management areas.

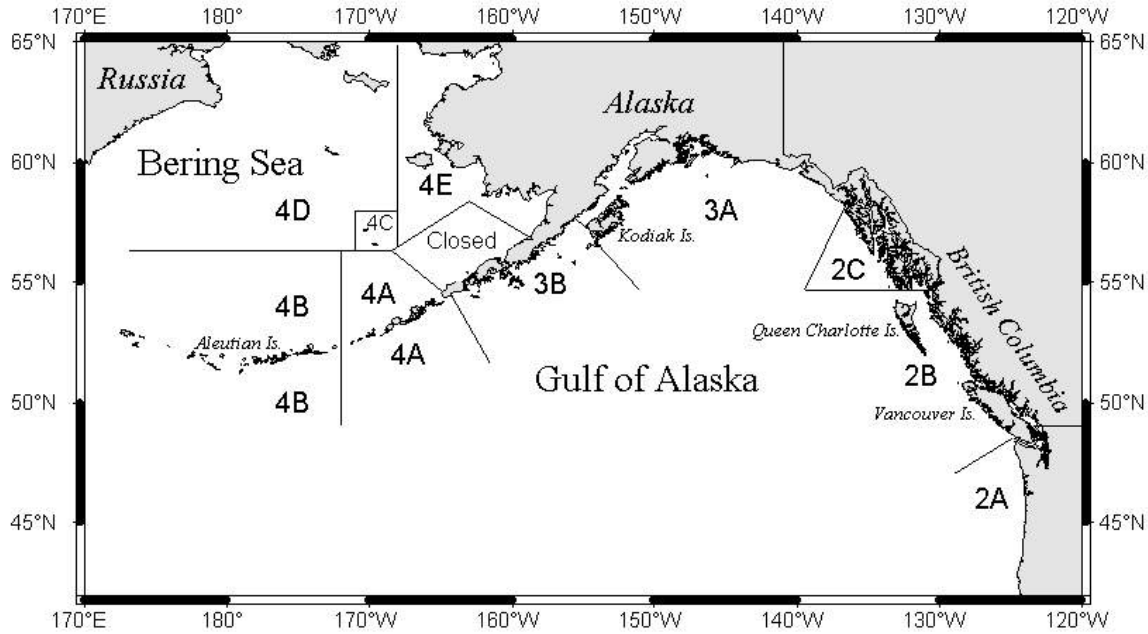


Figure 2.—International Pacific Halibut Commission (IPHC) regulatory areas.

Currently, a logbook record is required for every chartered or guided trip taken with clients, defined as an outing with one group of clients that ends when the clients and their fish (if fish were kept) are offloaded. Each trip is associated with an individual licensed business and guide.

## VESSEL REGISTRATION

In addition to establishing a licensing program and statewide freshwater logbook requirement, HB 452 included establishment of a vessel registration program to be conducted by ADF&G as part of the logbook program to monitor the number of vessels used in the guided marine and freshwater fisheries. All guide industry boats used in marine or freshwater are referred to as “charter or guide boats” regardless of their size or the manner in which they are used. All vessels used in the charter guide industry were required to be registered with ADF&G.

## METHODS

### GUIDE AND BUSINESS LICENSING

Businesses and guides can be licensed to provide sport fishing guided services if they meet the minimum qualifications specified in regulation (AS 16.40.260 and AS 16.40.270).

Beginning in 2006, each January the Division of Sport Fish mailed renewal license applications to each sport fishing guide and sport fishing business that was licensed in the previous year. In addition, guides and businesses could obtain a license in person at local ADF&G offices or through the Internet.

The license application could be used in three ways (Appendix A):

- To license a business only,
- To license a guide only,
- To license a combination business and guide (an owner/operator where the owner also conducted the guiding).

The license application collected business owner or guide name, permanent mailing information, permanent and inseason phone number if applicable. Additionally, the name of the business, name of the business owner, occupational business license number, insurance company information and insurance binder or policy number and effective dates were required. A guide is required to be a citizen of the United States, Canada, or Mexico, hold a current first aid card and have a current year Alaska sport fishing license along with any tags or permits required for specific fisheries. If a guide planned to operate a motorized vessel on navigable waters with clients on board, the guide was required to have a current U.S. Coast Guard Operator's License and provide that number and expiration date on the license application.

Unique license numbers were assigned according to how licensing occurred. License numbers did not remain the same in subsequent years. If an operator or guide licensed at an ADF&G office, a pre-numbered application was used and that number became the license number for that year. Renewal or internet license applications are numbered sequentially by the computer database that processed the information

Once the license applications were reviewed for completeness and accuracy, DSF mailed a wallet-sized license to each guide or business. Those applicants who licensed by going to an ADF&G office received a copy of their license, which allowed them to operate immediately. Those who applied on the Internet or with the renewal application, were required to wait until they received their license in the mail prior to operating or providing guiding services.

## **LOGBOOK DATA COLLECTION**

Logbook reporting is a mandatory process governed by regulation (AS 16.40.280). As such, the reporting process was considered to be a census of all charter/guided trips. Logbooks were available and issued from ADF&G area offices located statewide, in addition to a vendor located in Seward.

The statewide logbook has remained consistent in design since 2006, with few annual changes occurring in logbook layout. In 2006, both the freshwater and saltwater logbooks were redesigned to require reporting of angler license numbers and the harvest and release numbers by individual angler in an effort to improve reporting and facilitate evaluation of the quality of logbook data. Some of the annual design changes in the saltwater logbook were driven primarily by changes or improvements in the collection of halibut and rockfish data, and by requests from the NPFMC for information needed for allocation of halibut. Some changes were made to improve or simplify the use of the forms based on operator input, and to improve the capture of client and crew harvest information.

In 2011, ADF&G worked collaboratively with National Marine Fisheries Service (NMFS) to modify the logbook requirements associated with the federal Charter Halibut Permit (CHP) program, a program that establishes limited access to the guided halibut fishery. The 2011 saltwater logbook was designed to capture CHP numbers associated with the permits granted by the National Marine Fisheries Service (NMFS) to qualifying participants in the sport fish charter halibut fishery.

### **Saltwater Logbook Forms**

A saltwater logbook consisted of the cover page, schedule of reporting deadlines, one logbook check out sheet to show the business to which the logbook was issued and to register the saltwater vessel, a set of instructions for filling out the information on the logbook sheets, and 50

data sheets to record trip information (Appendix B). Data collected on each of the 50 pages consisted of:

- Date that fishing took place;
- Time that trip ended;
- ADF&G guide license number for the guide leading the trip;
- Charter Halibut Permit (CHP) Number;
- Primary statistical area fished while targeting salmon or bottomfish;
- Number of Hours fished;
- Port or community where trip ended;
- Crew, client, and “comped” angler’s current ADF&G sport fishing license or PID (permanent fishing license) number, the word “YOUTH” for anglers under 16;
- First and last name of each client and youth angler;
- Client residency (Alaska resident/nonresident of Alaska);
- Indication if crew fished or if angler was “comped”;
- Signature of angler who kept halibut while fishing in 2C only (southeast);
- A breakdown by fish species kept and released by each individual angler.

During a saltwater charter trip, the operator must decide if his/her gear or fishing methods are effectively targeting bottomfish, salmon or both. A 6-digit statistical code where most of the fish were caught or targeted is logged for each trip. Statistical maps were provided to the operator upon logbook issuance.

Saltwater species information collected included kept and released information for “large” Chinook (king salmon) 28” and longer and for “small” Chinook (king salmon) less than 28”. Also recorded were coho *O. kisutch*, sockeye *O. nerka*, halibut, lingcod, pelagic rockfish, yelloweye, and other nonpelagic rockfish, salmon shark *Lamna ditropis*, sablefish and a category for the number of all other species not already listed (Appendix B).

To determine the number of businesses and guides that were “active” in the industry, a cross reference of business and guide licenses is made to the logbook check out sheet and logbook data sheets. If ADF&G received at least one logbook data page that reported targeted effort with paying clients, the charter operator turning in the form was considered an “active” bottomfish or salmon charter operator with an “active” vessel.

### **Freshwater Logbook Forms**

A freshwater logbook consisted of the cover page, schedule of reporting deadlines, one logbook check out sheet to show the business to which the logbook was issued, a freshwater vessel registration page that collects the unique AK # assigned by the Department of Motor Vehicles (DMV) or a United States Coast Guard (USCG) documentation number and primary drainage, a set of instructions for filling out the information on the logbook sheets, and 50 data sheets to record trip information (Appendix C). Data collected on each of the 50 pages consisted of:

- ADF&G guide license number,
- Date that fishing took place,
- Specific name of river, stream or lake fished,
- Site code of site fished as referenced within a list provided with each logbook,

- Number of logbook pages used for a specific trip,
- Name of any other species kept,
- Crew, client, and “comped” angler’s current ADF&G sport fishing license number, and a youth angler designation for anglers under 16 years of age.
- Client residency,
- A breakdown by fish species kept and released by each individual angler.

Upon acquiring a freshwater logbook, the operator registers all vessels that may be used during the course of the fishing season. Freshwater vessel registration requires that the vessel already have a unique AK # assigned by DMV or a USCG documentation number. Freshwater vessels primarily have AK #'s. The operator must provide the AK # and indicate the primary freshwater drainage where the vessel will operate.

The freshwater logbook does not collect targeted species information like the saltwater logbook, it collects information on species kept and released regardless of what was targeted. A trip is counted if a logbook data page is submitted with paying client information regardless of catch. Freshwater trips are assigned a region of the state based on the name of the site fished, each freshwater site is assigned a unique regional alpha code followed by a numeric code within the region in which it is located (Table 1).

Freshwater information collected were: kept and released numbers for king, coho, and sockeye salmon, cutthroat *O. clarkii*, rainbow and steelhead trout *O. mykiss*, lake trout *Salvelinus namaycush*, Dolly Varden *S. malma*, Arctic grayling *Thymallus arcticus*, northern pike *Esox lucius*, sheefish *Stenodus leucichthys* and a category for the number of all other fish not already listed.

Business operators are allowed to and even encouraged to pick up as many logbooks as they anticipated needing during the course of the season. The ability to acquire as many logbooks as are needed prevents them from having to make multiple trips to an ADF&G office. As a result, numerous businesses ended up getting more logbooks than were eventually used. Because of this, ADF&G differentiates between the number of logbooks issued versus the number that are actually used or activated.

## **Vessel Registration**

Vessel registration information was collected when a saltwater or freshwater logbook was issued to a business (Appendix D1 and D2). Registration information included the Department of Motor Vehicles (DMV) number or the U.S. Coast Guard vessel documentation number. Upon completion of vessel registration with ADF&G, each vessel was provided with two decals and year tags to indicate that the vessel is to be used in the guide industry (Appendix D3 and D4). Decals must be applied and visible on both sides of the vessel.

## **LOGBOOK OUTREACH, VALIDATION AND VERIFICATION**

In December 2005, the Commissioner of the ADF&G issued a statement that mandated and detailed strategies for assuring the accuracy of the reporting of Pacific halibut harvest for the saltwater charter logbook through outreach and validation.

### **Outreach**

An outreach program was initiated to reach as many operators as possible to field questions and to ensure compliance with the reporting requirements. The outreach program was conducted on-site (in the field) by ADF&G employees and off-site from the Anchorage ADF&G office.



### ***On-site Logbook Inspections***

Logbook outreach occurred in parts of the Southeast and Southcentral regions in conjunction with existing creel survey and port sampling programs. “Courtesy logbook inspections” were conducted as time allowed by ADF&G creel and port sampling technicians during their regular dockside checks of the primary fisheries from May through September. In addition, management staff continued with periodic checks of charter logbooks while in the field. Logbooks were inspected to make sure that they were filled out correctly, and staff answered any questions about how they should be filled out. These checks were not intended for enforcement or for evaluating the accuracy of data but rather as another opportunity to encourage compliance and completeness and as an indicator of how important logbook data are to ADF&G.

### ***Off-site Logbook Review***

The goal of the outreach program was to ensure compliance with all reporting requirements, by emphasizing education early in the season. Off-site outreach was conducted by the Division of Sport Fish, Research and Technical Services (RTS) staff in the Anchorage office. All logbook trip data was subject to a reporting deadline. Logbook data pages were required to be completed and returned to ADF&G on a weekly basis as specified in the instructions of both the saltwater and freshwater logbooks. Timely submission was a requirement to facilitate recall and to allow ADF&G staff to review each data page for completeness and legibility. All logbook data sheets were received by RTS in Anchorage where ADF&G data entry staff date-stamped each data page with the date received, reviewed each page for incomplete, illegible or erroneous information, and conducted phone calls to business owners and guides for follow up and clarification. Calls early in the season were intended to alleviate repeat errors in reporting which were thought to result in fewer calls being necessary later in the fishing season.

As logbook data sheets were received, RTS staff conducted reviews by monitoring all data for completion and legibility prior to data entry. In the event that some of the logbook data sheets required verification from the operator or guide, staff would place phone calls.

Phone calls to the business owners and guides significantly improved the quality of the data, minimized reoccurring mistakes by the guide, increased compliance, and contributed to the outreach portion of this program. Logbook data entry staff contacted charter operators to resolve logbook reporting issues and to improve future reporting. These calls were intended to improve data quality and reinforce the message to the guide industry that logbook data are important and are consistently being reviewed.

Number of follow-up calls to Operators by year.				
2007	2008	2009	2010	2011
1,415	2,160	780	830	651

Follow up phone calls have become a valuable outreach tool and will continue to be a standard procedure in the future.

### **Validation**

#### ***In-season Saltwater Logbook Editing***

Computer routines have been written to check and validate the following saltwater data fields during the fishing season as logbook data pages are returned:

- Validate the guide license is filled in and valid.

- Validate the date is filled in and in 2011.
- Validate the port of landing is entered and is in the valid port site table.
- If hours are listed verify a statistical area is listed for the appropriate effort.
- Verify the statistical area listed is a valid statistical area.
- If there is harvest verify the appropriate statistical area is filled in.
- If a statistical area is filled out verify the appropriate hours field in filled in.
- Verify a statistical area is filled in (both can't be blank).
- Verify hours are filled in (both can't be blank).
- Validate possible incorrect stat areas that appear to be valid;
  - If data entry mistakenly enters the hours info in the statistical area the first statistical area that starts with the same number will be auto populated and accepted as valid.
- Check to see which log pages were turned in more than 7 days after the due date.
- Verify logbooks are checked out to a business and not a guide.
- Check all records with more than 12 hours listed.
- Check for duplicate logbook pages.
- Check trips that don't have paying angler records.
- Verify the date fished is not greater than the date the log page is received by ADF&G.

#### ***Post-season Saltwater Logbook Editing***

At the end of the fishing season, computer routines check and validate the above listed items in addition to the following saltwater data fields in preparation for developing summaries (Appendix E).

- All of the in-season edits are re-run.
- Check to make sure fish kept are within the limits for the area fished.
- Validate and review excessively large numbers of released fish based on frequency distribution analysis.

#### ***In-season Freshwater Logbook Editing***

Computer routines have been written to check and validate the following freshwater data fields during the fishing season as logbook data pages are returned.

- Validate the guide license number is filled in and valid.
- Validate the date is filled in and in 2011.
- Validate the site code is entered and is in the valid site code table.
- Check to make sure there are paying clients (not comped or crew) on the trip.
- Check to see which log pages were turned in more than 7 days after the due date.
- Check for duplicate logbook pages.
- Verify the date fished is not greater than the date the log page is received by ADF&G.
- Verify logbooks are checked out to a business and not a guide.
- Verify Kenai River trips weren't taken on Sunday or Monday in May – July.
- Check trip records that don't have angler records.

### ***Post-season Freshwater Logbook Editing***

At the end of the fishing season, computer routines check and validate the above listed items in addition to the following freshwater data fields in preparation for developing summaries (Appendix F).

- All of the in-season edits are re-run.
- Check to make sure fish kept are within the limits for the site fished.
- Check to make sure the fish caught are valid species for the site fished.
- Validate excessively large numbers of released fish based on frequency distribution analysis.
- Recode 'Other' site codes to correct values if they exist in the site code table.
- Recode sites with 'System' in the description to a more specific site code if available.
- Check records with 6 clients to verify the next page isn't part of the same trip.

### **Verification**

Logbook data were compared to actual counts of harvested fish (verified) and to reported harvest data (unverified) from onsite interviews. These comparisons are ongoing and are part of a more comprehensive evaluation of logbook data quality (Meyer and Powers *Unpublished*).

Three unique methods will be used to conduct post-season verification of logbook data:

1. A freshwater and saltwater comparison will be made between logbook data and guided trip information collected from the Alaska Statewide Harvest Survey (SWHS; Jennings et al. 2011).
2. A freshwater comparison will be made between logbook data and onsite interview data for the Situk River.
3. The data collected from the logbooks was compared to the data collected in the saltwater creel programs administered through ADF&G. Saltwater creel programs include the *Assessment of Recreational Halibut and Groundfish Harvest in Southcentral Alaska* program in Homer, *Haines Marine Sport Fishery Harvest in Southeast Alaska* (Chapell 2010), and *Harvest estimates for selected marine sport fisheries in Southeast Alaska* (Wendt and Jaenicke *In prep*).

## **RESULTS**

### **GUIDE AND BUSINESS LICENSING**

In 2011, ADF&G received license applications from 1,372 sport fishing businesses and 2,961 sport fishing guides licensed with the intent to provide sport fishing services in Alaska. The total number of businesses and guides includes all saltwater and freshwater operators. Of the 1,372 sport fishing businesses licensed in 2011, 1,236 were combination owner/guide licenses. Physical addresses of both the businesses and guides in 2011 indicated that 88% of the businesses reported Alaska residency, and 12% were from other residency strata (defined as nonresidents), 70% of the guides were residents and 30% were nonresidents.

The licensed businesses and guides were subtotaled by region for Southeast, Southcentral, and Other Alaska, including the Arctic-Yukon-Kuskokwim area and nonresident license applicants. In 2011, those with a physical address in Southeast comprised 26% of the total licensed businesses, 58% were in Southcentral, 5% had permanent addresses in other parts of Alaska, and

11% had nonresident addresses based on their license applications. In 2011, of those that licensed as guides only, 16% had permanent addresses in Southeast, 36% in Southcentral, 5% in other parts of Alaska and 43% had nonresident addresses based on their license applications (Table 2).

Based on the submission of logbook data pages with trip information in 2007, saltwater services were provided by 786 businesses, 513 provided freshwater services and 132 businesses provided both freshwater and saltwater services. In 2008, saltwater services were provided by 766 businesses, 508 provided freshwater services and 122 businesses provided both freshwater and saltwater services. In 2009, saltwater services were provided by 690 businesses, 474 provided freshwater services and 112 businesses provided both freshwater and saltwater services. In 2010, saltwater services were provided by 660 businesses, 430 provided freshwater services and 116 businesses provided both freshwater and saltwater services (Sigurdsson and Powers 2011). In 2011, saltwater services were provided by 585 businesses, 436 provided freshwater services and 101 businesses provided both freshwater and saltwater services. (Table 3 and Table 4).

Table 2.–Number of licensed businesses and guides by region, 2007–2011.

Region <sup>b</sup>	Licensed Businesses <sup>a</sup>				
	2007	2008	2009	2010	2011
Southeast	39	43	34	32	43
Southcentral	70	66	65	68	64
Other Alaska	2	2	2	4	2
Resident Total	111	111	101	104	109
Other U.S.	18	23	21	25	27
Foreign	0	0	0	0	0
Nonresident Total	18	23	21	25	27
Total	129	134	122	129	136
Region <sup>b</sup>	Combination Licenses <sup>c</sup>				
	2007	2008	2009	2010	2011
Southeast	422	414	371	351	313
Southcentral	909	887	812	764	727
Other Alaska	74	75	68	62	62
Resident Total	1,405	1,376	1,251	1,177	1,102
Other U.S.	160	149	155	146	134
Foreign	0	0	0	0	0
Nonresident Total	160	149	155	146	134
Total	1,565	1,525	1,406	1,323	1,236
Region <sup>b</sup>	Licensed Guides <sup>d</sup>				
	2007	2008	2009	2010	2011
Southeast	334	319	272	269	269
Southcentral	777	765	678	662	624
Other Alaska	75	80	87	78	85
Resident Total	1,186	1,164	1,037	1,009	978
Other U.S.	780	831	705	702	747
Foreign	0	2	1	0	0
Nonresident Total	780	833	706	702	747
Total	1,966	1,997	1,743	1,711	1,725

Note: Data are current as of 05/02/2012.

<sup>a</sup> Business only licenses do not include the owner as a guide.

<sup>b</sup> Region assigned based on physical address indicated at time of licensing.

<sup>c</sup> Combination licenses that include the business and the business owner as the guide.

<sup>d</sup> Guide license only, no business license.

Table 3.–Number of active saltwater businesses and guides by region, 2007–2011.

Region <sup>c</sup>	Active Businesses <sup>a</sup>					Active Guides <sup>b</sup>				
	2007	2008	2009	2010	2011	2007	2008	2009	2010	2011
Southeast	430	429	387	373	341	872	860	738	730	673
Southcentral	488	459	416	403	345	765	739	661	633	571
Total <sup>d</sup>	918	888	802	776	686	1,600	1,561	1,355	1,325	1,222

Note: Data are current as of 05/03/2012.

<sup>a</sup> Active Business counts are based on the business number listed on the signout sheet of a logbook (this can be a business only or a combined business/guide license) and the submission of at least one log page from the logbook.

<sup>b</sup> Active Guide counts are based on the guide number written on each log page (this can be a guide only or a combined business/guide license) and the submission of at least one log page showing that guide license number.

<sup>c</sup> Region is based on the port of offloading, salmon and bottomfish statistical area.

<sup>d</sup> Total is not additive because a business or guide could operate in both regions. Includes businesses and guides that offered both saltwater and freshwater services.

Table 4.–Number of active freshwater businesses and guides by region, 2007–2011.

Region <sup>c</sup>	Active Businesses <sup>a</sup>					Active Guides <sup>b</sup>				
	2007	2008	2009	2010	2011	2007	2008	2009	2010	2011
Southeast	72	70	63	69	68	176	178	143	151	159
Southcentral	528	512	476	433	431	1,270	1,302	1,090	1,050	1,056
Arctic-Yukon-Kuskokwim	68	69	67	62	62	224	222	203	200	219
Total <sup>d</sup>	645	630	586	546	537	1,579	1,633	1,375	1,347	1,358

Note: Data are current as of 05/03/2012.

<sup>a</sup> Active Business counts are based on the business number listed on the signout sheet of a logbook (this can be a business only or a combined business/guide license) and the submission of at least one log page from the logbook.

<sup>b</sup> Active Guide counts are based on the guide number written on each log page (this can be a guide only or a combined business/guide license) and the submission of at least one log page showing that guide license number.

<sup>c</sup> Region is based on the site code provided for the site fished on each logbook page.

<sup>d</sup> Total is not additive because a business or guide could operate in multiple regions. Includes businesses and guides that offered both freshwater and saltwater services.

## VESSELS

### Saltwater

The number of vessels registered to provide saltwater sport fishing charter services was 1,666 in 2007, steadily decreasing to 1,601 in 2008. In 2009, 1,444 vessels were registered. In 2010, there were 1,389 registered vessels and 1,259 saltwater vessels were registered in 2011 (Table 5). A vessel, though registered, is not considered “active” unless that vessel was used on one or more guided trip(s) as indicated by the submission of a logbook data page. Of the 1,666 saltwater vessels registered in 2007, 1,409 were active. In 2008, there were 1,601 saltwater vessels that were registered and 1,353 were active. In 2009, of the 1,444 saltwater vessels that were registered, 1,216 were active. In 2010, of the 1,389 saltwater vessels that were registered, 1,172 were active, and in 2011, of the 1,259 registered saltwater vessels, 1,079 were actually active. Based on the primary port of operation indicated at registration and port of offloading, 616 saltwater vessels operated in Southeast and 469 operated in Southcentral in 2011, the lowest number recorded in the last five years (Table 5).

Table 5.—Number of registered and active saltwater vessels by region, 2007–2011.

Region <sup>a</sup>	Registered Vessels					Active Vessels				
	2007	2008	2009	2010	2011	2007	2008	2009	2010	2011
Southeast	918	905	807	778	716	768	757	670	644	610
Southcentral	748	697	637	611	543	641	596	547	528	469
Total <sup>b</sup>	1,666	1,601	1,444	1,389	1,259	1,409	1,353	1,216	1,172	1,079

Note: Data are current as of 05/03/2012.

<sup>a</sup> Region for registered vessels is based on primary port of operation listed on the signout sheet; for active vessels region is based on primary port of offloading, salmon and bottomfish statistical areas.

<sup>b</sup> Total is not be additive because a vessel could be registered or active in both regions.

Logbook data indicate that vessels will target all possible species; bottomfish, salmon and both during the course of a fishing season (Table 6).

Table 6.—Number of active saltwater vessels that made at least one trip in each target category, by region, 2007–2011.

Year	Region <sup>b</sup>	Target <sup>a</sup>			
		Salmon	Bottomfish	Both	No Statistical Area
2007	Southeast	637	494	676	49
	Southcentral	377	576	495	32
	Total	1,014	1,070	1,171	81
2008	Southeast	622	534	648	55
	Southcentral	325	546	441	22
	Total	947	1,080	1,089	77
2009	Southeast	538	417	586	27
	Southcentral	269	497	402	17
	Total	807	914	988	44
2010	Southeast	514	401	567	63
	Southcentral	245	476	385	43
	Total	759	877	952	106
2011	Southeast	522	287	505	40
	Southcentral	257	419	358	38
	Total	779	706	863	78

Note: Data are current as of 05/03/2012.

<sup>a</sup> Target is based on salmon and bottomfish statistical areas.

<sup>b</sup> Region is based on the port of offloading, salmon and bottomfish statistical areas.

## Freshwater

Based on the primary drainage and sites fished, many more freshwater vessels operate in Southcentral than in other regions between 2007 and 2011 (Table 7).

Table 7.—Number of registered freshwater vessels by year and region, 2007–2011.

Year	Southeast	Southcentral	Arctic Yukon Kuskokwim	Unknown <sup>a</sup>	Total <sup>b</sup>
2007	131	1,670	240	0	2,040
2008	123	1,743	263	0	2,128
2009	97	1,650	230	0	1,976
2010	96	1,615	198	3	1,911
2011	91	1,585	244	1	1,920

Notes: Data are current as of 05/24/2011. Region is based on primary drainage listed on the vessel registration sheet. If region could not be determined based on a primary drainage then the area fished was used.

<sup>a</sup> Insufficient information available during registration and on fishing activity.

<sup>b</sup> Total may not be additive because a vessel could be registered in more than one region.

## TRIPS

### Saltwater

Logbook data indicate that 67,152 saltwater charter trips were conducted statewide in 2007, in 2008 there were 62,005 trips, in 2009, there were 48,506 saltwater trips, 48,742 in 2010, and 48,491 saltwater trips were conducted in 2011. During all five years, a majority of the trips that targeted salmon only, occurred in Southeast Alaska, whereas, the majority of trips that targeted bottomfish only, occurred in Southcentral Alaska. During the same five years, operators in Southeast conducted significantly more trips in which both salmon and bottomfish were targeted on the same trip. If a statistical area fished was not provided or indicated, no targeted species was assigned (Table 8).

Table 8.—Number of saltwater trips by targeted species by region, 2007–2011.

Year	Region <sup>b</sup>	Species Targeted <sup>a</sup>				Total
		Salmon	Bottomfish	Both	Unknown	
2007	SE	12,759	6,144	20,633	63	39,599
	SC	2,876	16,489	8,145	43	27,553
	Total	15,635	22,633	28,778	106	67,152
2008	SE	11,338	7,368	18,634	108	37,448
	SC	2,135	15,733	6,617	72	24,557
	Total	13,473	23,101	25,251	180	62,005
2009	SE	8,789	4,842	14,498	45	28,174
	SC	2,008	12,604	5,699	21	20,332
	Total	10,797	17,446	20,197	66	48,506
2010	SE	7,613	5,369	14,740	99	27,821
	SC	2,026	13,225	5,593	88	20,932
	Total	9,639	18,594	20,333	187	48,753
2011	SE	8,687	3,465	16,056	79	28,287
	SC	2,057	12,093	5,987	67	20,204
	Total	10,744	15,558	22,043	146	48,491

Note: Data are current as of 05/04/2012.

<sup>a</sup> Species targeted is based on the provision of salmon and/or bottomfish statistical area.

<sup>b</sup> Region is based on the port of offloading, salmon and bottomfish statistical areas.

## Freshwater

In 2007, there were 48,697 freshwater guided fishing trips conducted, 48,501 were conducted in 2008, and 37,554 were taken in 2009, with 37,791 freshwater trips occurring in 2010. In 2011, 40,130 freshwater trips were conducted statewide, 83% of those trips took place in Southcentral, 11% in the Arctic-Yukon-Kuskokwim (AYK) area, and 6% in Southeast (Table 9).

Table 9.—Number of freshwater trips by region, 2007–2011.

Year	SE	SC	Arctic Yukon Kuskokwim	Total
2007	3,241	40,557	4,899	48,697
2008	3,113	40,587	4,801	48,501
2009	2,400	31,305	3,849	37,554
2010	2,456	31,267	4,065	37,788
2011	2,430	33,131	4,569	40,130

*Note:* Region is based on the area code of the site code listed on each logbook page.

Data are current as of 05/16/2012.

## LOGBOOK TRIP EFFORT AND HARVEST

Statewide saltwater charter trips decreased significantly in 2009 after an increase between 2006 and 2007, and a slight decrease in 2008 (Table 10). Saltwater angler days have steadily decreased from 2006 to 2009 with a very slight increase in 2010. Saltwater angler days and trips show very little change from 2010 to 2011 (Table 10). For freshwater guided fishing statewide, the number of trips and angler days fished appeared to remain steady from 2006 to 2008 until 2009 and 2010 when a notable decrease in freshwater trips and angler days occurred. However, in 2011 there was a slight increase in both the number of freshwater trips and angler days (Table 10).

## SALTWATER

In 2011, 81% of the saltwater logbooks that were issued were activated (effort or catch reported). From 2007 through 2011, the saltwater logbook collected information on client residency. In 2011, records show that 87% of the angler days of effort in the saltwater charter salmon fishery were conducted by nonresident anglers, compared with 9% by residents and 4% by crew, comped anglers or those of unknown residency. In 2011, records also indicate that 79% of the angler days of effort in the saltwater charter bottomfish fishery were conducted by nonresident anglers, 15% by residents and 6% by crew fishing, comped anglers or those of unknown residency (Tables 11-12).

In 2011 coho and king salmon made up 69% and 12% respectively of the harvest statewide, with the remaining 19% consisting of a combination of other salmon (Table 11).

In 2011, of the total number of angler days fished, 64% of the salmon participation took place in Southeast, and 36% in Southcentral. Within that same period, 39% of the bottomfish participation took place in Southeast, and 61% occurred in Southcentral (Table 12).

Of the bottomfish harvested in 2011, halibut were the most harvested species at 268,243 fish, making up 56% of the total bottomfish harvest statewide. Statewide, 19% of the halibut harvest occurred in Southeast and 81% occurred in Southcentral (Table 12). It should be noted that in Southeast, IPHC area 2C, anglers fishing from a charter vessel were limited to one halibut per day, whereas in Southcentral, IPHC area 3A, guided anglers were allowed two halibut per day in 2011.



## FRESHWATER

In 2011, of all issued freshwater logbooks, 66% were activated. In 2011, records indicate that 7% of the freshwater participation occurred in Southeast, 84% occurred in Southcentral, and 9% took place in the Alaska-Yukon-Kuskokwim (AYK) or interior Alaska (Table 13).

Angler days of effort in 2011 indicate that 89% of the anglers in the freshwater guided fishery were nonresident anglers, 10% were residents and 1% were crew fishing, comped anglers or those of unknown residency. In Southeast, 93% of the guided/chartered fishing was conducted by nonresident anglers, 88% were nonresidents in Southcentral, and 91% of the anglers in AYK were nonresidents.

In 2011, coho, sockeye and king salmon were the predominant salmon species, making up 47%, 35% and 13% respectively of the harvest statewide, with the remaining 5% consisting of a combination of other fish (Table 13).

Table 10.—Saltwater and freshwater trips and angler days by region, 2007–2011.

Year	Region	Saltwater <sup>a</sup>		Freshwater <sup>b</sup>	
		Trips	Angler Days	Trips	Angler Days
2007	SE	39,599	158,551	3,241	11,610
	SC	27,553	163,964	40,557	126,444
	AYK	0	0	4,899	12,266
	Total	67,152	322,515	48,697	150,320
2008	SE	37,448	150,789	3,113	10,730
	SC	24,557	146,717	40,587	126,596
	AYK	0	0	4,801	11,833
	Total	62,005	297,506	48,501	149,159
2009	SE	28,174	110,285	2,400	8,066
	SC	20,332	119,611	31,305	94,387
	AYK	0	0	3,849	8,909
	Total	48,506	229,896	37,554	111,362
2010	SE	27,821	110,915	2,456	8,898
	SC	20,932	135,170	31,267	94,910
	AYK	0	0	4,065	9,416
	Total	48,753	246,085	37,788	113,224
2011	SE	28,287	111,120	2,430	8,885
	SC	20,204	135,249	33,131	99,661
	AYK	0	0	4,569	10,750
	Total	48,491	246,369	40,130	119,296

Note: Data are current as of 05/16/2012.

<sup>a</sup> Saltwater region is based on the port of offloading, salmon and bottomfish statistical areas.

<sup>b</sup> Freshwater region is based on the area code of the site code listed on each logbook page.

Table 11.—Saltwater salmon effort and harvest by region and angler type, 2011.

Region <sup>a</sup>	Type of Angler	Angler Days <sup>b</sup>	King salmon		Coho	Sockeye	Other salmon
			Large <sup>c</sup>	Small <sup>c</sup>			
SE	Resident	1,821	1,278	48	2,512	10	633
	Non-Resident	94,188	37,459	1,184	171,660	963	66,269
	Comped	456	221	6	793	2	293
	Crew	769	4	0	876	13	286
	Unknown	661	138	9	800	8	524
	Total	97,895	39,100	1,247	176,641	996	68,005
SC	Resident	12,394	976	201	20,816	178	723
	Non-Resident	37,352	3,981	752	64,153	1,200	4,323
	Comped	537	46	10	855	8	21
	Crew	3,727	188	48	3,161	112	192
	Unknown	298	11	6	556	3	36
	Total	54,308	5,202	1,017	89,541	1,501	5,295
Total	Resident	14,215	2,254	249	23,328	188	1,356
	Non-Resident	131,540	41,440	1,936	235,813	2,163	70,592
	Comped	993	267	16	1,648	10	314
	Crew	4,496	192	48	4,037	125	478
	Unknown	959	149	15	1,356	11	560
	Total	152,203	44,302	2,264	266,182	2,497	73,300

Note: Data are current as of 05/04/2012.

<sup>a</sup> Region is based on the port of offloading, salmon and bottomfish statistical areas.

<sup>b</sup> Angler days totals all anglers who fished on a day when a salmon statistical area was entered, plus angler days where an angler harvested a salmon when a bottomfish statistical area was provided.

<sup>c</sup> Large king salmon are 28 inches and longer; small are under 28 inches.

Table 12.–Saltwater bottomfish effort and harvest by region and angler type, 2011.

Region <sup>a</sup>	Type of Angler	Angler Days <sup>b</sup>	Rockfish						
			Halibut	Lingcod	Pelagic	Yelloweye	Non-pelagic	Sablefish	Shark
Southeast	Resident	1,449	873	232	991	162	245	9	0
	Non-Resident	78,678	50,408	5,092	79,088	9,871	21,144	5,078	0
	Comped	415	249	40	469	69	121	35	0
	Crew	728	60	6	515	3	18	4	0
	Unknown	428	204	11	334	29	117	1	0
	Total	81,698	51,794	5,381	81,397	10,134	21,645	5,127	0
Southcentral	Resident	29,637	51,973	2,976	12,274	2,517	1,516	50	2
	Non-Resident	86,005	148,419	9,593	43,724	6,187	3,740	181	6
	Comped	1,036	1,640	113	562	50	52	12	0
	Crew	9,343	13,620	542	2,692	390	245	6	0
	Unknown	545	797	57	311	42	26	2	0
	Total	126,566	216,449	13,281	59,563	9,186	5,579	251	8
Total	Resident	31,086	52,846	3,208	13,265	2,679	1,761	59	2
	Non-Resident	164,683	198,827	14,685	122,812	16,058	24,884	5,259	6
	Comped	1,451	1,889	153	1,031	119	173	47	0
	Crew	10,071	13,680	548	3,207	393	263	10	0
	Unknown	973	1,001	68	645	71	143	3	0
	Total	208,264	268,243	18,662	140,960	19,320	27,224	5,378	8

Note: Data are current as of 05/04/2012.

<sup>a</sup> Region is based on the port of offloading, bottomfish and salmon statistical areas.

<sup>b</sup> Angler days totals all anglers who fished on a day when a bottomfish statistical area was entered, plus angler days where an angler harvested a bottomfish when a salmon statistical area was provided.

Table 13.–Freshwater effort and harvest by species, region and angler type, 2011.

Region <sup>a</sup>	Type of Angler	Angler Days	Lake						Dolly		Northern		
			King	Coho	Sockeye	Cutthroat	Rainbow	Steelhead	Trout	Grayling	Varden	Pike	Sheefish
Southeast	Resident	350	6	332	142	0	0	0	0	0	2	0	0
	Non-Resident	8,292	88	7,847	1,707	11	2	4	0	0	185	0	0
	Comped	22	0	0	0	0	0	0	0	0	6	0	0
	Crew	145	4	165	42	0	0	0	0	0	3	0	0
	Unknown	76	0	22	12	0	0	0	0	0	1	0	0
	Total	8,885	98	8,366	1,903	11	2	4	0	0	197	0	0
Southcentral	Resident	10,428	1,814	3,279	2,346	2	34	1	0	3	118	51	0
	Non-Resident	87,894	10,837	34,229	32,295	2	363	15	117	202	1,613	341	0
	Comped	276	40	74	68	0	0	0	0	0	1	1	0
	Crew	564	21	350	213	0	5	0	3	0	5	1	0
	Unknown	499	70	226	199	0	2	0	0	0	11	2	0
	Total	99,661	12,782	38,158	35,121	4	404	16	120	205	1,748	396	0
AYK <sup>b</sup>	Resident	693	221	153	88	0	7	0	1	20	70	60	16
	Non-Resident	9,754	1,083	2,735	340	0	96	0	5	269	504	132	75
	Comped	35	1	12	3	0	1	0	0	3	0	0	0
	Crew	195	2	7	8	0	27	0	0	5	22	2	0
	Unknown	73	23	24	2	0	1	0	0	43	2	0	0
	Total	10,750	1,330	2,931	441	0	132	0	6	340	598	194	91
Total	Resident	11,471	2,041	3,764	2,576	2	41	1	1	23	190	111	16
	Non-Resident	105,940	12,008	44,811	34,342	13	461	19	122	471	2,302	473	75
	Comped	333	41	86	71	0	1	0	0	3	7	1	0
	Crew	904	27	522	263	0	32	0	3	5	30	3	0
	Unknown	648	93	272	213	0	3	0	0	43	14	2	0
	Total	119,296	14,210	49,455	37,465	15	538	20	126	545	2,543	590	91

Note: Data are current as of 05/16/2012.

<sup>a</sup> Region is based on the area code of the site code listed on each logbook page.

<sup>b</sup> AYK is the Arctic-Yukon-Kuskokwim region.

## **DISCUSSION**

### **GUIDE AND BUSINESS LICENSING**

The 2007 through 2011 ADF&G guide and business licensing process differed from the registration process prior to 2005 in terms of the approach used, fees, and the information collected on license applications. The current licensing approach reflects changes made in 2005 to initiate the new minimum requirements established by HB 452. Guides and businesses offering guided fishing services are now held to a higher standard of compliance than previous to 2005. Violations of the guide licensing statutes or regulations adopted under HB 452 are either violations or misdemeanors, and courts are authorized to revoke the license of the guide or business under certain conditions, such as repeated convictions within a three-year period.

ADF&G no longer collects the information collected on previous applications regarding the type (saltwater vs. freshwater) and location (regions/subareas) of services. That information is available from logbook data. The 2007-2011 licensing processes have been similar and provide a basis for establishing a long-term database of licensed businesses and guides. Charter/guide business and guide licensing still reflects the intent to operate, while actual activity is confirmed by the submission of logbook trip data.

### **LOGBOOKS**

ADF&G initiated a mandatory saltwater charter logbook program in 1998. The BOF adopted regulations requiring annual registration of sport fishing guides and businesses, and logbook reporting. The logbook and registration/licensing program was intended to provide information on actual participation and harvest by individual vessels and businesses.

Recent emphasis from ADF&G management staff and NPFMC on more timely saltwater data spurred discussions on how to hasten logbook data availability. Up until 2010, logbook data entry involved collecting logbook sheets from the guide, entering the logbook data into a logbook database, and editing the data. This process could take RTS from six to eight weeks. Discussions included the possibility of an electronic submission option that would provide data to ADF&G and NPFMC staff in a more timely manner. Any option for a logbook change would have to include a design that is appealing and easy for the guide industry to use, such that they would perceive it as beneficial to a process that they already consider “burdensome.” Electronic reporting options were, at first, appealing to fulfill both management needs and halibut management needs for more timely information. Further discussions concluded that electronic reporting would still necessitate the use of a paper version of the logbook due to enforcement and trip recording requirements. Data would still need to be verified for errors, be entered accurately into a database, and be available for onsite inspection. There are currently no options for going “paperless”, and no perceived benefit to managers or the industry that would result from the process. The “paperless” approach would require a change in regulation for reporting requirements along with extensive research into the cost of electronic reporting. The discussion for going “paperless” will continue however.

Upon further discussion and research, an alternative approach was considered. In 2009, ADF&G programmers researched the option of developing a system that would electronically scan the image of a redesigned logbook data page. Scanned images would minimize data entry time but allow for data entry personnel to fix images flagged as unrecognizable, thus maintaining data accuracy and quality. This option is not any more “burdensome” to the industry and would

likely make the weekly reporting requirement more palatable knowing that the data would be more immediately available.

In 2010, the saltwater logbook data page design change incorporated the ability to use the new scanning software. Due to first year design “glitches” and software troubleshooting, the 2010 saltwater data was not available in as timely a manner as originally hoped. A program review with office assistants and discussions with the project analyst programmer resulted in adjustments to the design format and software to be implemented for 2011.

In 2011, ADF&G worked collaboratively with National Marine Fisheries Service (NMFS) to modify the logbook requirements associated with the federal Charter Halibut Permit (CHP) program, a program that establishes limited access to the guided halibut fishery. The 2011 saltwater logbook was designed to capture CHP numbers associated with the permits granted by NMFS to qualifying participants in the sport fish charter halibut fishery.

Preliminary results from verification studies comparing the accuracy of logbook harvest data with the statewide harvest survey estimates, and onsite creel programs are favorable. Logbook data will continue to be compared to counts from these programs. Comparisons are ongoing and are part of a more comprehensive evaluation of logbook data quality. Logbook halibut data has been used extensively. Saltwater and freshwater logbook data have also been used for a variety of regulatory analyses for state managed species.

## **ACKNOWLEDGEMENTS**

Southeast and Southcentral regional and area staff, especially numerous front counter personnel, have been critical to the success of the ADF&G sport fishing guide and business licensing and logbook program. The above staff along with Bob Chadwick and Mike Jaenicke from Southeast, Scott Meyer, Matt Miller and Tom Vania from Southcentral, and Tom Taube from Fairbanks have also provided valuable comments during the process of licensing and logbook form design.

Doug Vincent-Lang continued to provide valuable insight on the history of the program and facilitated numerous discussions with NOAA and IPHC. Bob Clark’s thoughtful insight and direction has been very much appreciated. We also acknowledge the expertise and infinite patience exhibited by Joanne MacClellan in preparing this report. Her knowledge and willingness to assist is invaluable.

Kirk Brogdon of the division's Research and Technical Services section deserves considerable credit for designing and implementing efficient information management systems for data capture, cleaning, storage, and reporting.

Kathy Kush should be acknowledged for her incredible skills in streamlining the licensing process and making sure that all license applications are processed in a timely manner that has allowed the guides and businesses to start operation without delay.

Margaret Nussbaum, Diane Novinska, Raili Kedzior, and Andrea Hamby deserve credit for receiving, editing, scanning, entering, and filing the licensing and logbooks forms. With their perseverance, we met reporting deadlines that seemed nearly impossible with available staffing and workloads.

We also acknowledge the cooperation of the thousands of sport fishing guides and sport fishing businesses that licensed and completed their logbooks in a timely and compliant manner.

## REFERENCES CITED

- Chapell, R. S. 2010. Production, escapement, and juvenile tagging of Chilkat River Chinook salmon in 2007. Alaska Department of Fish and Game, Fishery Data Series No. 10-86, Anchorage. <http://www.sf.adfg.state.ak.us/FedAidpdfs/FDS10-86.pdf>
- Dean, M. R. 2001. Alaska Department of Fish and Game sportfishing guide and business registration and saltwater sportfishing charter vessel logbook program, 1999. Alaska Department of Fish and Game, Special Publication No. 01-1, Anchorage. <http://www.sf.adfg.state.ak.us/FedAidPDFs/sp01-01.pdf>
- Dean, M. R., and A. L. Howe. 1999. Alaska Department of Fish and Game sportfishing guide and business registration and saltwater sportfishing charter vessel logbook program, 1998. Alaska Department of Fish and Game, Special Publication No. 99-1, Anchorage. <http://www.sf.adfg.state.ak.us/FedAidPDFs/sp99-01.pdf>
- Jennings, G. B., K. Sundet, and A. E. Bingham. 2011. Estimates of participation, catch, and harvest in Alaska sport fisheries during 2010. Alaska Department of Fish and Game, Fishery Data Series No. 11-60, Anchorage. <http://www.adfg.alaska.gov/FedAidpdfs/FDS11-60>
- Meyer, S., and B. Powers. *Unpublished*. Evaluation of Alaska Charter Logbook data for 2006-2008, a report to the North Pacific Fishery Management Council, October 2010. Alaska Department of Fish and Game, Division of Sport Fish, Anchorage. [http://www.fakr.noaa.gov/npfmc/current\\_issues/halibut\\_issues/logbookeval909.pdf](http://www.fakr.noaa.gov/npfmc/current_issues/halibut_issues/logbookeval909.pdf)
- Sigurdsson, D., and B. Powers. 2011. Participation, effort, and harvest in the sport fish business/guide licensing and logbook reporting programs, 2010. Alaska Department of Fish and Game, Fishery Data Series No. 11-31, Anchorage. <http://www.sf.adfg.state.ak.us/FedAidPDFs/FDS11-31.pdf>
- Sigurdsson, D., and B. Powers. 2010. Participation, effort, and harvest in the sport fish business/guide licensing and logbook reporting programs, 2009. Alaska Department of Fish and Game, Fishery Data Series No. 10-65, Anchorage. <http://www.sf.adfg.state.ak.us/FedAidPDFs/FDS10-65.pdf>
- Sigurdsson, D., and B. Powers. 2009. Participation, effort, and harvest in the sport fish business/guide licensing and logbook reporting programs, 2006-2008. Alaska Department of Fish and Game, Special Publication No. 09-11, Anchorage. <http://www.sf.adfg.state.ak.us/FedAidPDFs/SP09-11.pdf>
- Wendt, K. L., and M. J. Jaenicke. *In prep*. Harvest estimates for selected marine sport fisheries in Southeast Alaska during 2010. Alaska Department of Fish and Game, Fishery Data Series, Anchorage.





**APPENDIX A**  
**SPORT FISH BUSINESS OWNER/GUIDE LICENSE**  
**APPLICATION**



# 2011 SPORT FISH BUSINESS OWNER/ GUIDE LICENSE APPLICATION

Alaska Department of Fish and Game / Division of Sport Fish - RTS  
333 Raspberry Road, Anchorage, Alaska 99518-1565  
Telephone: (907) 267-2369 or (907) 267-2390  
<http://www.sf.adfg.state.ak.us/statewide/Guides/guide.cfm>

License #

This TEMPORARY LICENSE is good for 21 business days from date signed by Dept. Representative

<p><b>FEES CHECK ONE:</b> <u>All fees are nonrefundable</u></p> <p><input type="checkbox"/> \$50.00 Guide Only License</p> <p><input type="checkbox"/> \$100.00 Business Only License</p> <p><input type="checkbox"/> \$100.00 Combined Business/Guide License*</p> <p><small>*An agent for this business cannot apply as a guide on a combination license</small></p>	<p><b>METHOD OF PAYMENT:</b></p> <p><input type="checkbox"/> Check # : _____ Make checks payable to " <u>State of Alaska</u> "</p> <p><input type="checkbox"/> Money Order #: _____</p> <p><input type="checkbox"/> Cash (<u>Anchorage, Juneau, Fairbanks offices ONLY</u>)</p> <p><input type="checkbox"/> Credit Card (<u>Anchorage, Juneau, Fairbanks offices ONLY</u>)</p>	<p>APPLICATION MUST BE STAMPED BY ADF&amp;G TO BE VALID</p>
<p><input type="checkbox"/> \$50.00 Guide Only Upgrade to Combination Business/Guide License</p>		

## INSTRUCTIONS TO COMPLETE FORM ON REVERSE

### SECTION A. ALL APPLICANTS COMPLETE THIS SECTION

Name of Business Owner or Guide: \_\_\_\_\_  
Last First Mi

Permanent Mailing Address : \_\_\_\_\_  
PO Box or Street Address City State Zip

Telephone Number: ( ) \_\_\_\_\_ In season Telephone Number: ( ) \_\_\_\_\_

Mail License Here (if different than above): \_\_\_\_\_  
PO Box or Street Address City State Zip

### SECTION B. TO BE FILLED OUT BY THE BUSINESS OWNER OR THEIR AGENT

**BUSINESS INFORMATION:**

Name of Business: \_\_\_\_\_

Name of Business Owner: \_\_\_\_\_

Alaska Div. of Occupational Business License Number: \_\_\_\_\_ Expiration Date: Mo/Date/Yr

**INSURANCE:** See detailed insurance requirements on back.

Name of Insurance Company: \_\_\_\_\_

Policy/Binder #: \_\_\_\_\_ Effective Dates: From: \_\_\_\_\_ To: \_\_\_\_\_

*\*Remember to get a logbook for your business at the nearest ADF&G office prior to commencement of guiding activities.\**

### SECTION C. TO BE FILLED OUT BY GUIDE OR THEIR AGENT

Are you a citizen of the United States, Canada, Mexico or resident alien? Yes  No

Basic First Aid Information: Certifying agency: \_\_\_\_\_ Exp. Date: Mo/Yr

2011 Alaska Sport Fishing License # (not your Guide License #): \_\_\_\_\_ Date of Birth: Mo/Date/Yr

**U.S. COAST GUARD OPERATOR'S LICENSE:** (See explanation on back)

Do you plan to operate a motorized vessel in Navigable Waters? Yes  No  **If yes, complete the next line.**

U.S.C.G. License # or Merchant Mariner Credential Doc #: \_\_\_\_\_ Exp. Date: Mo/Date/Yr

**SIGNATURE OF BUSINESS OWNER/AGENT or GUIDE:**

I hereby certify that all information is true and correct and that I understand this information is subject to public disclosure. (NOTE: Making a false statement or omitting a material fact, is subject to a maximum penalty of \$10,000 or 1 year imprisonment, or both, per AS 11.56.210.)

X \_\_\_\_\_ Circle one: Applicant or Agent Date: \_\_\_\_\_

This temporary license must be signed and stamped by an ADF&G employee and in your possession before guiding activities begin.

Name of ADF&G Representative (print): \_\_\_\_\_ Place of Issue: \_\_\_\_\_

Signature: \_\_\_\_\_ Date: \_\_\_\_\_

Bottom Copy To Applicant

Appendix A1.-Sport fish business owner/guide license application, 2011.

-continued-



## INSTRUCTIONS FOR THE 2011 SPORT FISH BUSINESS OWNER/GUIDE LICENSE APPLICATION

**Attention:** *The following will apply without exception:*

1. All applicable sections of the license application must be complete and legible prior to ADF&G validation. No “pending”, “unknowns,” or blanks will be accepted.
2. Incomplete license applications will be returned resulting in a processing delay.
3. A signature is required.
4. This is a license application only. A permanent license will be mailed within 21 business days.
5. There may be requirements by other state and federal agencies to operate as a guide in Alaska.

### **INSTRUCTIONS:**

**SECTION A:** ALL applicants must complete this section.

**SECTION B: BUSINESS OWNER OR THEIR AGENT:** Complete this section if you are the owner/agent of the sport fishing business. This section should be filled out even if the owner does not intend to personally guide clients. An agent for this business **CANNOT** apply as a guide on the same application. A separate license application must be submitted.

**LIABILITY INSURANCE REQUIREMENT:** General liability or marine protection that covers at least \$100,000 for each incident and \$300,000 for all incidents in a year. Insurance must cover **ALL** periods of time when the owner or owner’s employees are providing sport fishing services to clients. Insurance must be current, **NOT** pending.

#### **IMPORTANT NOTICE TO BUSINESS OWNERS**

State regulation (5 AAC 75.075) requires that all operators providing sport fishing guide services in Alaska must apply annually for a license with the Department of Fish and Game **before** guiding services begin. Business owners are required to register all charter vessels with ADF&G and acquire a logbook prior to commencement of guiding activities. ***Guides hired by an operator must keep a copy of the ADF&G business license in their possession while guiding.***

**SECTION C: GUIDES:** Complete this section if you intend to guide for a sport fish operation owned by someone other than you or if you are the business owner who also intends to guide (owner/operator).

**U.S. COAST GUARD OPERATOR’S LICENSE:** A licensed sport fish guide **must** have, at minimum, a Limited OUPV for Western Waters in Alaska or 6-pak U.S.C.G. operator’s license in their possession while operating a motorized vessel with clients or transporting clients in a motorized vessel on navigable waters. Navigable waters are determined by the U.S. Coast Guard (907) 271-6736.

**Note:** Effective April 20, 2009 the U.S.C.G. began issuing the Merchant Mariner Credentials (MMC). Applicants must provide their U.S.C.G. license number, expiration date and date of birth (DOB).

#### **IMPORTANT NOTICE TO GUIDES**

State regulation (5 AAC 75.075) requires that all licensed guides providing sport fishing guide services in Alaska must apply annually for a license with the Department of Fish and Game **before** guiding activities begin.

#### **WHAT A GUIDE MUST HAVE IN POSSESSION WHILE GUIDING**

A sport fish business owner or guide should be able to present all documents required for licensing upon request by a representative of the department of fish and game, or any peace officer of the state. While engaged in providing sport fishing guide services, a sport fishing guide shall have the following readily available for inspection:

- A current sport fishing guide license;
- A copy of the current ADF&G sport fishing business license of the guide’s employer;
- A current Alaska sport fishing license, tags, stamps or permits that are required to engage in the sport fishery for which the guide services are providing;
- An identification card issued to the sport fishing guide by a state or federal agency that bears a photo of the sport fishing guide.



**APPENDIX B**  
**SALTWATER LOGBOOK FORM**



**State of Alaska  
Department of Fish & Game  
Division of Sport Fish**

**2011 Saltwater Charter Logbook and Vessel Registration**

*Vessel*

*Name:* \_\_\_\_\_

*Vessel AK. #*

*or*

*U.S.C.G. #:* \_\_\_\_\_

***ALL CHARTER TRIP ACTIVITY CONDUCTED FROM THIS VESSEL MUST BE  
RECORDED WITHIN THE LOGBOOK ASSIGNED TO THIS VESSEL***

***Federal rules require that the Charter Halibut Permit (CHP) number(s) be recorded on the  
logbook before the beginning of any trip during which halibut are caught and retained.***

**CHP #:**

**CHP HOLDER:**

\_\_\_\_\_  
\_\_\_\_\_  
\_\_\_\_\_  
\_\_\_\_\_

\_\_\_\_\_  
\_\_\_\_\_  
\_\_\_\_\_  
\_\_\_\_\_

**Please follow the INSTRUCTIONS carefully as they have changed**

**LOGBOOK INSPECTION**

**This logbook must be presented for inspection, upon request, to any representative of the Department of Fish and Game, peace officer of the state, or law enforcement representative of the National Marine Fisheries Service.**



TRIP INFORMATION

➔ Complete this section for every trip. Continue on additional pages for trips with more than six anglers in the same trip.

➔ DATE FISHED: \_\_\_\_\_ / \_\_\_\_\_ 2011 \_\_\_\_\_ AM \_\_\_\_\_ PM  
Month Day Hour Trip Ended

➔ 2011 GUIDE LICENSE #: \_\_\_\_\_  
(assigned to you by ADF&G)

➔ CHARTER HALIBUT PERMIT (CHP) NUMBER: \_\_\_\_\_  
(check box if more than one CHP is being used on this trip)

**C H P** \_\_\_\_\_

➔ TARGETED SPECIES / LOCATION FISHED:  
(where most fish species were caught)

Salmon: \_\_\_\_\_ Primary Statistical Area \_\_\_\_\_ Hours Fished

Bottomfish: \_\_\_\_\_ Primary Statistical Area \_\_\_\_\_ Hours Fished

➔ COMMUNITY OR PORT WHERE TRIP ENDED:  
(where fish or clients were off-loaded from vessel)

\_\_\_\_\_

FOR OFFICE USE ONLY  
 \_\_\_\_\_  
 Total Anglers

INDIVIDUAL ANGLER AND CATCH INFORMATION

Complete one row below for each angler who fished this trip. Record sport fishing license number, printed name AND Alaska residency status for all anglers. Write "YOUTH" in license number field for anglers under 16.

	AK Resident	Non - Resident	Compd Crew	Sept / Released	SALMON							BOTTOMFISH										
					King (20" & longer)	King (under 20")	Concho	Sockeye	Other Salmon	Halibut	Lingcod	Pelagic Rockfish	Yelloweye Rockfish	Nonpelagic Rockfish (including Sablefish)	Sablefish (Black cat)	Salmon Shark	All Other Fish					
1. _____ License Number	<input type="radio"/>	<input type="radio"/>	<input type="radio"/>	<input type="radio"/>	<input type="checkbox"/>	<input type="checkbox"/>	<input type="checkbox"/>	<input type="checkbox"/>	<input type="checkbox"/>	<input type="checkbox"/>	<input type="checkbox"/>	<input type="checkbox"/>	<input type="checkbox"/>	<input type="checkbox"/>	<input type="checkbox"/>	<input type="checkbox"/>	<input type="checkbox"/>	<input type="checkbox"/>	<input type="checkbox"/>	<input type="checkbox"/>	<input type="checkbox"/>	<input type="checkbox"/>
_____ R First Name / Last Name																						
_____ Signature																						
2. _____ License Number	<input type="radio"/>	<input type="radio"/>	<input type="radio"/>	<input type="radio"/>	<input type="checkbox"/>	<input type="checkbox"/>	<input type="checkbox"/>	<input type="checkbox"/>	<input type="checkbox"/>	<input type="checkbox"/>	<input type="checkbox"/>	<input type="checkbox"/>	<input type="checkbox"/>	<input type="checkbox"/>	<input type="checkbox"/>	<input type="checkbox"/>	<input type="checkbox"/>	<input type="checkbox"/>	<input type="checkbox"/>	<input type="checkbox"/>	<input type="checkbox"/>	<input type="checkbox"/>
_____ R First Name / Last Name																						
_____ Signature																						
3. _____ License Number	<input type="radio"/>	<input type="radio"/>	<input type="radio"/>	<input type="radio"/>	<input type="checkbox"/>	<input type="checkbox"/>	<input type="checkbox"/>	<input type="checkbox"/>	<input type="checkbox"/>	<input type="checkbox"/>	<input type="checkbox"/>	<input type="checkbox"/>	<input type="checkbox"/>	<input type="checkbox"/>	<input type="checkbox"/>	<input type="checkbox"/>	<input type="checkbox"/>	<input type="checkbox"/>	<input type="checkbox"/>	<input type="checkbox"/>	<input type="checkbox"/>	<input type="checkbox"/>
_____ R First Name / Last Name																						
_____ Signature																						
4. _____ License Number	<input type="radio"/>	<input type="radio"/>	<input type="radio"/>	<input type="radio"/>	<input type="checkbox"/>	<input type="checkbox"/>	<input type="checkbox"/>	<input type="checkbox"/>	<input type="checkbox"/>	<input type="checkbox"/>	<input type="checkbox"/>	<input type="checkbox"/>	<input type="checkbox"/>	<input type="checkbox"/>	<input type="checkbox"/>	<input type="checkbox"/>	<input type="checkbox"/>	<input type="checkbox"/>	<input type="checkbox"/>	<input type="checkbox"/>	<input type="checkbox"/>	<input type="checkbox"/>
_____ R First Name / Last Name																						
_____ Signature																						
5. _____ License Number	<input type="radio"/>	<input type="radio"/>	<input type="radio"/>	<input type="radio"/>	<input type="checkbox"/>	<input type="checkbox"/>	<input type="checkbox"/>	<input type="checkbox"/>	<input type="checkbox"/>	<input type="checkbox"/>	<input type="checkbox"/>	<input type="checkbox"/>	<input type="checkbox"/>	<input type="checkbox"/>	<input type="checkbox"/>	<input type="checkbox"/>	<input type="checkbox"/>	<input type="checkbox"/>	<input type="checkbox"/>	<input type="checkbox"/>	<input type="checkbox"/>	<input type="checkbox"/>
_____ R First Name / Last Name																						
_____ Signature																						
6. _____ License Number	<input type="radio"/>	<input type="radio"/>	<input type="radio"/>	<input type="radio"/>	<input type="checkbox"/>	<input type="checkbox"/>	<input type="checkbox"/>	<input type="checkbox"/>	<input type="checkbox"/>	<input type="checkbox"/>	<input type="checkbox"/>	<input type="checkbox"/>	<input type="checkbox"/>	<input type="checkbox"/>	<input type="checkbox"/>	<input type="checkbox"/>	<input type="checkbox"/>	<input type="checkbox"/>	<input type="checkbox"/>	<input type="checkbox"/>	<input type="checkbox"/>	<input type="checkbox"/>
_____ R First Name / Last Name																						
_____ Signature																						

Form 11-540 (01-2011)

CERTIFICATION: I certify that the information provided herein is accurate and true. Falsification or omission of information on this form is punishable under AS 11.56.210(a) and 5 AAC 75.076.

X \_\_\_\_\_ GUIDE SIGNATURE PAGE \_\_\_\_\_ OF \_\_\_\_\_





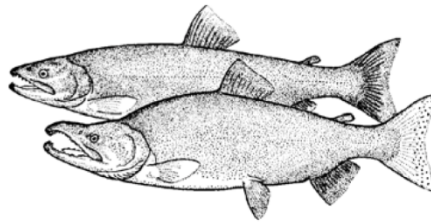
**APPENDIX C**  
**FRESHWATER LOGBOOK FORMS**

# 2011 Freshwater Sport Fish Guide Logbook and Vessel Registration

LOGBOOK NO.

BUSINESS NAME

ADF&G BUSINESS OWNER'S LICENSE NO.



*Please follow the instructions carefully  
as they have changed.*



**State of Alaska Department of Fish & Game  
Division of Sport Fish**

## **LOGBOOK INSPECTION**

*Upon request from any representative  
of the Department or any peace officer of the state,  
a person is required to present this Alaska Department  
of Fish and Game Freshwater Sport Fishing  
Guide Logbook for inspection.*

Appendix C1.—Freshwater guide logbook from, 2011.

-continued-



LOGBOOK NO. \_\_\_\_\_

TRIP INFORMATION	Angler Residency <small>(Circle One)</small>		Sport Fish License Number of each Client, Nonpaying angler, and Crew <b>THAT FISHED</b> AND Record all those anglers under 16 as "Youth Angler" (YA1, YA2etc.)	Crew <small>(Circle One)</small> if applicable		SALMON				TROUT				OTHER				
	Resident	Non-Resident		Comped	Crew	DEPT	RELEASED	KING	COHO	SOCKEYE	CUTTHROAT	RAINBOW	STEELHEAD	LAKE TROUT	DOLLY VARDEN	ARCTIC GRAYLING	NORTHERN PIKE	SHEEFISH *
2011 ADF&G GUIDE LICENSE #: _____	<input type="checkbox"/>	<input type="checkbox"/>																
DATE FISHED: _____ 2011 <small>(Month) (Day)</small>	<input type="checkbox"/>	<input type="checkbox"/>																
RIVER / STREAM / LAKE (SPECIFY) _____	<input type="checkbox"/>	<input type="checkbox"/>																
SITE CODE <small>(REFER TO SITE CODE LIST)</small> _____	<input type="checkbox"/>	<input type="checkbox"/>																
PAGE NO. _____ OF _____	<input type="checkbox"/>	<input type="checkbox"/>																
TOTAL NO. OF PAGES FOR THIS TRIP ↑	<input type="checkbox"/>	<input type="checkbox"/>																
* WRITE IN OTHER SPECIES HERE _____	<input type="checkbox"/>	<input type="checkbox"/>																
CERTIFICATION: I certify that the information provided herein is accurate and true. Falsification or omission of information on this form is punishable under AS 11.56.210(a) and 5 AAC 75.076.			X _____ GUIDE SIGNATURE										CONTINUE ON NEXT PAGE IF MORE THAN 6 ANGLERS. CHECK IF TRIP INFORMATION IS CONTINUED ON NEXT PAGE: <input type="checkbox"/>					

35



**APPENDIX D**  
**VESSEL REGISTRATION FORMS, DECALS AND TAGS**



**INSTRUCTIONS FOR ADF&G REPRESENTATIVE:**

Please forward the white copy of this form to: Sport Fish RTS, 333 Raspberry Rd., Anchorage, AK 99518-1565.

**DO NOT REMOVE THE PINK COPY. THE PINK COPY MUST STAY IN THE LOGBOOK.**

DO NOT ISSUE A LOGBOOK UNLESS THE APPLICANT HAS THE FOLLOWING:

- ⇒ 2011 ADF&G Sport Fish Business License
- ⇒ Current AK Vessel Number issued by DMV or Current U.S.C.G. Vessel Documentation No.

NONE OF THE ABOVE CAN BE "PENDING"

2011 ADF&G Sport Fish Business Owner and Guide License applications are available at all ADF&G offices or online at: <http://www.adfg.alaska.gov>

AK Vessel Registration information is available from Alaska Div. of Motor Vehicles at (907) 269-5551 or online at: <http://www.dmv.alaska.gov/dmv/regboat.htm>

**2011 Saltwater Sport Fish Charter Logbook Sign-Out AND Vessel Registration**  
*Must be completed*

**SPORT FISH BUSINESS INFORMATION:**

Name of Sport Fishing Business: \_\_\_\_\_

Sport Fish Business Owner License Number (ADF&G No.): 2011- \_\_\_\_\_

**SPORT FISHING CHARTER VESSEL REGISTRATION:**

⇒ DMV issued AK No. or Vessel U.S.C.G. Documentation No.: \_\_\_\_\_  
*(A logbook WILL NOT be issued without a current AK or U.S.C.G. number)*

⇒ Vessel Name: \_\_\_\_\_  
*(Vessel name and AK No. or U.S.C.G. # must appear on the cover)*

⇒ Primary Alaska Saltwater port from which this vessel will operate during 2011:  
\_\_\_\_\_

**DEPARTMENT USE ONLY**

⇒ Did you issue a Stat. Area Map? YES  NO  If No, Explain:

⇒ ADF & G Representative: *(print)* \_\_\_\_\_

⇒ Area Office: \_\_\_\_\_ Date of Issue: \_\_\_\_\_





Appendix D3.–Vessel decal, 2011.



Appendix D4.–Vessel tab, 2011.



**APPENDIX E**  
**SALTWATER EDITING RESULTS**

Appendix E1.–Saltwater editing results, 2011.

Edit	Number Occurrences
No guide license number	0
Invalid guide license number	6
Missing date	0
Invalid date (not in correct year)	0
Invalid port of offloading	8
Invalid port of origin	N/A
Missing salmon statistical area	27
Missing bottomfish statistical area	55
Invalid salmon statistical area	0
Invalid bottomfish statistical area	0
Salmon harvest no salmon statistical area	1,026
Bottomfish harvest no bottomfish statistical area	2,084
Salmon statistical area listed, no hours listed	585
Bottomfish statistical area listed, no hours listed	925
No statistical area listed	163
No hours listed	122
Possible invalid salmon statistical area	0
Possible invalid bottomfish statistical area	0
Log pages turned in late <sup>a</sup>	3,888
Log book wasn't checked out to a business	0
Salmon or bottomfish hours are greater than 12	62
Duplicate log pages	0
Trip records without angler records	0
Date fished greater than date received by ADF&G	3
<b>Trips</b>	<b>48,491</b>

<sup>a</sup> Allows a 7 day grace period

**APPENDIX F**  
**FRESHWATER EDITING RESULTS**

Appendix F1.–Freshwater editing results, 2011.

Edit	Number Occurrences
No guide license number	0
Invalid guide license number	0
Missing date	2
Invalid date (not in correct year)	0
Missing site code	4
Invalid site code	0
No paying clients	0
Log pages turned in late <sup>a</sup>	7,495
Duplicate log pages	0
Date fished greater than date received by ADF&G	0
Log book wasn't checked out to a business	0
Kenai River trips on Sunday or Monday	206
Trip records without angler records	0
<b>Trips</b>	<b>40,130</b>

<sup>a</sup> Allows a 7 day grace period

**APPENDIX G**  
**FRESHWATER LOGBOOK SUMMARIES BY AREA AND**  
**SITE**

Appendix G1.—Freshwater logbook participation by area and site, Southeast Alaska, 2011.

Area	Site	Trips	Businesses <sup>a</sup>	Guides <sup>a</sup>	Angler Days					Total
					Resident	Non-Res	Comped	Unknown	Crew	
A	Lakes and streams	129	6	10	0	380	0	0	3	383
B	Other lakes and streams	51	10	14	7	121	0	1	5	134
B	Staney Creek	42	4	7	1	103	0	0	0	104
B	Thorne River and Lake	24	5	7	1	51	0	0	0	52
C	Lakes and streams	53	8	11	4	183	0	0	0	187
D	Baranof Island streams and lakes	145	10	34	7	444	0	10	0	461
D	Chichagof Island streams and lakes	39	7	14	4	118	0	0	3	125
D	Eva Lake and Stream (Baranof Island)	22	7	11	1	69	0	4	0	74
D	Nakwasina Sound streams (Baranof Island)	52	7	13	2	175	0	6	0	183
D	Other Lakes and streams	11	8	8	3	38	0	0	0	41
D	Plotnikof System Stream and Lake (Baranof Island)	14	4	5	0	48	0	0	0	48
D	Rezanof System stream and lakes (Baranof Island)	9	4	6	0	27	0	0	0	27
D	Saook Bay streams (Baranof Island)	22	4	10	2	133	0	11	0	146
D	Sitkoh Creek and Lake (Chichagof Island)	26	7	8	2	65	0	0	0	67
E	Admiralty Island streams (Admiralty Island)	149	6	21	5	635	2	12	3	657
E	Other lakes and streams	160	5	14	5	744	0	3	0	752
G	Mud Bay Creek (Chichagof Island)	14	4	6	1	61	10	0	0	72
G	North Chichagof Island streams	79	5	13	2	342	1	3	1	349
G	Trail River (Chichagof Island)	18	4	4	0	87	9	0	15	111
H	Other lakes and streams	412	11	24	108	1,449	0	4	43	1,604
H	Situk River (above weir)	477	7	12	134	1,122	0	12	55	1,323
H	Situk River (below weir)	26	6	6	5	59	0	0	11	75
H	Tsiu River	424	5	27	56	1,700	0	8	6	1,770
	Other lakes and streams in Southeast	32	3	5	0	138	0	2	0	140
	Total Southeast	2,430	68	159	350	8,292	22	76	145	8,885

Note: Responses with less than 4 businesses are not reported separately, to protect confidentiality of respondents. Data are current as of 05/16/2012

<sup>a</sup> Regional and statewide business and guide totals aren't additive because a business and/or guide can operate in multiple sites and areas.

Appendix G2.—Freshwater logbook participation by area and site, Southcentral Alaska, 2011.

Area	Site	Trips	Businesses <sup>a</sup>	Guides <sup>a</sup>	Angler Days					Total
					Resident	Non-Res	Comped	Unknown	Crew	
J	Lakes and streams	100	8	11	54	298	2	5	3	362
K	Lakes and streams	282	10	14	373	664	35	3	19	1,094
M	Chulitna River	26	4	7	7	61	1	0	1	70
M	Chunilna Creek (Clear Creek)	58	5	8	8	217	2	0	0	227
M	Deshka River (Kroto Creek) above weir	106	5	6	37	338	0	0	0	375
M	Deshka River (Kroto Creek) below weir	204	15	16	303	462	3	0	13	781
M	Fish Lake Creek and Fish lakes (Yentna drainage)	33	6	10	9	89	4	0	1	103
M	Indian Creek (into Yentna near Fish lakes)	86	6	16	8	267	4	0	6	285
M	Kashwitna River	56	4	4	61	148	1	0	0	210
M	Lake Creek	1,427	20	65	188	3,496	19	16	16	3,735
M	Other lakes and streams - Chulitna / East Susitna drainage	43	12	13	34	92	2	0	3	131
M	Other lakes and streams - West Susitna drainage	28	7	11	22	73	0	0	4	99
M	Talachulitna River	336	8	19	32	896	2	0	3	933
M	Talkeetna River	397	6	21	163	1,374	2	2	11	1,552
M	Willow Creek	26	7	7	9	65	2	0	0	76
M	Yentna River	99	8	14	29	259	3	2	3	296
M	Yentna River drainage (Remainder)	516	18	37	32	1,471	1	2	25	1,531
N	Bachatna Creek	10	4	4	0	35	0	0	0	35
N	Big River	126	10	15	38	420	0	2	2	462
N	Big River lakes	749	21	32	156	2,655	1	26	6	2,844
N	Chuitna River	38	8	13	1	149	0	0	1	151
N	Crescent Lake	71	13	18	26	279	0	11	0	316
N	Kamishak River	116	7	28	4	334	0	4	15	357
N	Kustatan River	269	28	40	75	1,014	1	7	18	1,115
N	Other sites (South of North Forelands)	61	12	18	0	230	0	0	1	231
N	Other sites between North Forelands and Susitna drainage	17	5	7	0	42	0	1	0	43
N	Wolverine Creek mouth (by Big River Lakes)	501	20	31	75	1,913	0	29	7	2,024

-continued-

Area Site	Trips	Businesses <sup>a</sup>	Guides <sup>a</sup>	Angler Days					Total
				Resident	Non-Res	Comped	Unknown	Crew	
P Anchor River	57	8	11	13	113	1	1	2	130
P Deep Creek	64	4	4	14	234	0	1	3	252
P Kasilof River above Highway	32	10	12	31	73	0	0	0	104
P Kasilof River below Highway	2,308	89	133	1,295	6,376	20	36	11	7,738
P Kenai River - Cook Inlet to Soldotna Bridge	6,322	178	258	3,322	18,477	93	81	24	21,997
P Kenai River - guided, reach not specified	42	6	7	16	99	2	1	0	118
P Kenai River - Moose River to Skilak outlet	1,292	98	141	699	3,355	10	6	6	4,076
P Kenai River - Skilak Inlet to Kenai Lake	2,305	46	81	1,064	6,037	21	17	26	7,165
P Kenai River - Soldotna Bridge to Moose R	616	52	77	140	1,734	7	1	3	1,885
P Other lakes	29	6	10	7	82	0	0	2	91
P Other streams	76	10	12	7	342	0	0	1	350
P Quartz Creek	31	9	12	3	75	0	0	0	78
P Russian River	76	8	11	10	142	0	0	0	152
Q Afognak Island streams	20	4	4	12	66	0	0	4	82
Q Afognak River (Litnik Stream)	26	4	4	2	70	0	0	18	90
Q Ayakulik River (sometimes called Red River)	151	5	14	21	516	0	0	2	539
Q Dog Salmon Creek (Frazer River)	78	5	9	11	325	0	0	7	343
Q Karluk Lake and River above Weir	86	8	12	6	474	0	0	3	483
Q Olds River	22	4	5	0	67	6	0	0	73
Q Other remote lakes	7	4	5	1	27	0	0	1	29
Q Other remote streams	321	21	37	50	1,011	0	1	44	1,106
Q Pasagshak River	29	4	4	1	80	0	0	2	83
Q Roadside lakes	55	5	7	0	178	0	0	4	182
Q Roadside streams	76	8	12	16	211	0	1	3	231
Q Saltery River	452	6	15	130	1,395	7	7	48	1,587
R American Creek	490	17	52	78	1,123	0	13	6	1,220
R Becharof System	129	14	37	3	341	0	0	3	347
R Brooks Lake	8	4	5	1	24	0	0	1	26

-continued-



Area	Site	Trips	Businesses <sup>a</sup>	Guides <sup>a</sup>	Angler Days					Total
					Resident	Non-Res	Comped	Unknown	Crew	
R	Brooks River	430	20	90	67	1,012	2	6	3	1,090
R	Contact Creek	64	8	21	9	155	0	0	1	165
R	Egegik River (Becharof System)	183	11	37	6	607	0	6	8	627
R	Naknek River (downstream from Rapids Camp incl trib)	292	12	37	41	623	1	2	0	667
R	Naknek River (Rapids Camp upstream to Naknek Lk,incl trib)	714	12	60	53	1,639	2	14	1	1,709
R	Naknek River and Tributaries	690	20	71	192	1,572	5	11	6	1,786
R	Other lakes	18	7	8	4	59	0	0	0	63
R	Other streams	1,178	25	72	82	2,926	1	4	12	3,025
R	Ugashik System	154	15	44	15	375	0	5	11	406
S	Alagnak (Branch) River	1,354	19	90	25	2,925	3	25	13	2,991
S	Battle River	104	14	34	7	281	0	0	67	355
S	Copper River (Lake Iliamna Area)	540	12	36	118	1,250	0	0	2	1,370
S	Funnel Creek	50	12	24	2	119	0	3	0	124
S	Gibraltar River	83	6	16	11	192	0	0	0	203
S	Iliamna River	157	6	14	2	359	0	2	0	363
S	Kijik Lake	4	4	4	0	13	0	0	0	13
S	Kijik River	8	5	6	0	29	0	0	2	31
S	Kontrashibuna Lake	8	4	5	5	20	0	0	0	25
S	Kukaklek River (Big Ku) (into Alagnak)	120	9	33	8	248	0	0	0	256
S	Kulik River	468	13	67	90	1,128	0	13	0	1,231
S	Kvichak River	598	23	81	70	1,365	5	8	3	1,451
S	Lake Clark	48	7	9	9	114	0	0	2	125
S	Lake Iliamna	60	10	22	5	175	1	0	2	183
S	Little Kulik (into Nanuktuk Creek)	23	6	15	4	49	0	0	0	53
S	Lower Talarik Creek	41	7	15	4	119	0	0	0	123
S	Moraine Creek	489	23	87	27	1,098	0	5	7	1,137
S	Nanuktuk Creek	72	8	22	7	158	0	2	0	167

-continued-

Area	Site	Trips	Businesses <sup>a</sup>	Guides <sup>a</sup>	Angler Days					Total
					Resident	Non-Res	Comped	Unknown	Crew	
S	Newhalen River	14	7	9	2	37	0	0	0	39
S	Nonvianuk River (into Alagnak)	77	11	20	4	164	0	0	4	172
S	Other lakes and streams	19	6	8	2	55	0	0	0	57
S	Tazimina River	59	4	16	7	131	0	0	0	138
S	Upper Talarik Creek	19	5	11	1	49	0	0	0	50
T	Agulowak River	612	6	34	304	862	0	19	0	1,185
T	Agulukpak River	288	11	41	23	536	0	1	0	560
T	Aleknagik Lake	69	5	15	4	140	0	12	0	156
T	Mulchatna River	73	8	10	6	176	1	2	2	187
T	Nushagak River - Black Point upstream to Sonar Site	558	18	64	203	1,410	2	16	22	1,653
T	Nushagak River - sonar site to outlet of Mulchatna	818	30	99	223	2,134	0	34	12	2,403
T	Nushagak River - upstream from mouth of Mulchatna River	386	6	29	13	717	0	1	1	732
T	Other lakes	150	4	20	5	272	0	2	0	279
T	Other streams	264	8	35	8	524	0	1	1	534
T	Togiak River System	495	8	45	31	1,046	1	16	0	1,094
T	Wood River lakes system	268	8	38	23	571	0	5	0	599
	Other lakes and streams in Southcentral	31	8	10	9	72	0	8	0	89
	<b>Total Southcentral</b>	<b>33,131</b>	<b>431</b>	<b>1,056</b>	<b>10,428</b>	<b>87,894</b>	<b>276</b>	<b>499</b>	<b>564</b>	<b>99,661</b>

Note: Responses with less than 4 businesses are not reported separately, to protect confidentiality of respondents. Data are current as of 05/16/2012.

<sup>a</sup> Regional and statewide business and guide totals aren't additive because a business and/or guide can operate in multiple sites and areas.

Appendix G3.—Freshwater logbook participation by area and site, Arctic-Yukon-Kuskokwim Alaska, 2011.

Area	Site	Trips	Businesses <sup>a</sup>	Guides <sup>a</sup>	Angler Days				Total	
					Resident	Non-Res	Comped	Unknown		Crew
I	Gulkana River mainstem (reach unknown)	53	7	9	15	125	15	2	10	167
I	Klutina River	307	8	19	208	724	2	8	11	953
I	Other lakes and streams	119	7	16	120	284	1	1	4	410
U	Lakes	79	8	8	37	244	3	3	41	328
U	Streams	582	8	23	53	1,249	9	3	40	1,354
V	Aniak River	301	5	21	6	580	1	0	5	592
V	Goodnews River	707	8	32	26	1,411	0	1	8	1,446
V	Holitna River	256	5	22	10	630	0	1	1	642
V	Kanektok River (Quinhagak, Chosen)	983	6	43	30	1,884	0	5	3	1,922
V	Kuskokwim River drainages below and including Aniak River	95	6	13	29	397	1	0	25	452
V	Other lakes and streams - Kuskokwim Bay	169	5	26	1	353	0	2	14	370
V	Other streams - Kuskokwim drainages above Aniak	16	4	6	0	29	0	0	0	29
V	Telequana Lake	8	4	5	0	21	0	0	0	21
W	Streams	389	5	18	82	706	0	12	16	816
Y	Streams	473	7	19	56	856	2	35	16	965
	Other lakes and streams in Arctic-Yukon-Kuskokwim	32	3	3	20	261	1	0	1	283
	<b>Total Arctic-Yukon-Kuskokwim</b>	<b>4,569</b>	<b>62</b>	<b>219</b>	<b>693</b>	<b>9,754</b>	<b>35</b>	<b>73</b>	<b>195</b>	<b>10,750</b>

*Note:* Responses with less than 4 businesses are not reported separately, to protect confidentiality of respondents. Data are current as of 05/16/2012.

<sup>a</sup> Regional and statewide business and guide totals aren't additive because a business and/or guide can operate in multiple sites and areas.

Appendix G4.–Freshwater logbook participation by region, Statewide, 2011.

Region	Trips	Businesses <sup>a</sup>	Guides <sup>a</sup>	Angler Days					
				Resident	Non-Res	Comped	Unknown	Crew	Total
Southeast	2,430	68	159	350	8,292	22	76	145	8,885
Southcentral	33,131	431	1,056	10,428	87,894	276	499	564	99,661
Arctic-Yukon-Kuskokwim	4,569	62	219	693	9,754	35	73	195	10,750
Total	40,130	537	1,358	11,471	105,940	333	648	904	119,296

*Note:* Data are current as of 05/16/2012.

<sup>a</sup> Regional and statewide business and guide totals aren't additive because a business and/or guide can operate in multiple sites and areas.

Appendix G5.—Freshwater logbook angler days and species kept by area and site, Southeast Alaska, 2011.

Area	Site	Angler Days	Salmon			Trout				Dolly			
			Kings	Coho	Sockeye	Cutthroat	Rainbow	Steelhead	Lake	Varden	Grayling	Pike	Sheefish
A	Lakes and streams	383	0	130	0	1	0	0	0	16	0	0	0
B	Other lakes and streams	134	0	69	12	0	0	0	0	11	0	0	0
B	Staney Creek	104	0	11	2	0	0	0	0	2	0	0	0
B	Thorne River and Lake	52	0	19	0	0	0	0	0	5	0	0	0
C	Lakes and streams	187	0	6	0	5	0	1	0	8	0	0	0
D	Baranof Island streams and lakes	461	4	17	3	0	1	0	0	10	0	0	0
D	Chichagof Island streams and lakes	125	0	2	0	0	0	0	0	4	0	0	0
D	Eva Lake and Stream (Baranof Island)	74	0	0	0	0	0	0	0	0	0	0	0
D	Nakwasina Sound streams (Baranof Island)	183	0	3	0	0	0	0	0	1	0	0	0
D	Other lakes and streams	41	0	17	0	0	0	0	0	4	0	0	0
D	Plotnikof System Stream and Lake (Baranof Island)	48	0	64	0	0	0	0	0	0	0	0	0
D	Rezanof System stream and lakes (Baranof Island)	27	0	0	0	0	0	0	0	0	0	0	0
D	Saook Bay streams (Baranof Island)	146	0	0	0	0	0	0	0	0	0	0	0
D	Sitkoh Creek and Lake (Chichagof Island)	67	0	0	0	0	0	0	0	0	0	0	0
E	Admiralty Island streams (Admiralty Island)	657	0	7	0	1	0	0	0	45	0	0	0
E	Other lakes and streams	752	0	8	0	0	0	0	0	3	0	0	0
G	Mud Bay Creek (Chichagof Island)	72	0	3	0	0	0	0	0	15	0	0	0
G	North Chichagof Island streams	349	0	21	0	2	0	0	0	8	0	0	0
G	Trail River (Chichagof Island)	111	0	20	0	0	0	0	0	11	0	0	0
H	Other lakes and streams	1,604	41	2,780	259	2	0	0	0	9	0	0	0
H	Situk River (above weir)	1,323	53	724	1,534	0	1	3	0	31	0	0	0
H	Situk River (below weir)	75	0	56	88	0	0	0	0	1	0	0	0
H	Tsiu River	1,770	0	4,409	2	0	0	0	0	2	0	0	0
	Other lakes and streams in Southeast	140	0	0	3	0	0	0	0	11	0	0	0
	Total Southeast	8,885	98	8,366	1,903	11	2	4	0	197	0	0	0

Note: Responses with less than 4 businesses are not reported separately, to protect confidentiality of respondents. Data are current as of 05/16/2012.

Appendix G6.—Freshwater logbook angler days and species kept by area and site, Southcentral Alaska, 2011.

Area	Site	Angler Days	Salmon			Trout			Dolly				
			Kings	Coho	Sockeye	Cutthroat	Rainbow	Steelhead	Lake	Varden	Grayling	Pike	Sheefish
J	Lakes and streams	362	47	381	232	4	2	0	0	16	3	0	0
K	Lakes and streams	1,094	149	869	2	0	1	0	0	2	0	0	0
M	Chulitna River	70	7	12	0	0	0	0	0	0	0	0	0
M	Chunilna Creek (Clear Creek)	227	19	23	0	0	5	0	0	1	0	0	0
M	Deshka River (Kroto Creek) above weir	375	110	203	0	0	39	0	0	0	0	14	0
M	Deshka River (Kroto Creek) below weir	781	392	146	0	0	1	0	0	0	0	7	0
M	Fish Lake Creek and Fish lakes (Yentna drainage)	103	16	31	0	0	0	0	0	0	0	156	0
M	Indian Creek (into Yentna near Fish Lakes)	285	0	649	1	0	0	0	0	0	0	1	0
M	Kashwitna River	210	85	1	0	0	0	0	0	0	0	0	0
M	Lake Creek	3,735	468	1,574	683	0	47	0	0	2	8	52	0
M	Other lakes and streams-Chulitna/East Susitna drainage	131	23	52	0	0	0	0	0	0	13	23	0
M	Other lakes and streams - West Susitna drainage	99	3	114	35	0	0	0	0	0	0	6	0
M	Talachulitna River	933	138	576	264	0	0	0	0	0	3	0	0
M	Talkeetna River	1,552	263	568	439	0	2	0	0	7	1	0	0
M	Willow Creek	76	0	6	3	0	0	0	0	0	0	0	0
M	Yentna River	296	38	302	41	0	0	0	0	1	0	0	0
M	Yentna River drainage (Remainder)	1,531	274	712	264	0	5	0	15	3	1	25	0
N	Bachatna Creek	35	0	89	0	0	0	0	0	0	0	0	0
N	Big River	462	0	473	655	0	0	0	0	12	0	0	0
N	Big River lakes	2,844	0	2,937	3,481	0	3	0	0	20	0	0	0
N	Chuitna River	151	0	226	0	0	0	0	0	0	0	0	0
N	Crescent Lake	316	0	133	306	0	27	0	0	65	66	0	0
N	Kamishak River	357	0	469	15	0	0	0	0	151	0	0	0
N	Kustatan River	1,115	8	2,718	32	0	0	0	0	7	0	0	0
N	Other Sites (South of North Forelands)	231	0	363	29	0	0	0	0	17	0	0	0
N	Other Sites between N. Forelands and Susitna drainage	43	0	33	33	0	0	0	0	0	0	33	0

-continued-

Area	Site	Angler Days	Salmon			Trout				Dolly			
			Kings	Coho	Sockeye	Cutthroat	Rainbow	Steelhead	Lake	Varden	Grayling	Pike	Sheefish
N	Wolverine Ck mouth (by Big River Lakes)	2,024	0	608	3,094	0	0	0	0	11	0	0	0
P	Anchor River	130	4	2	0	0	0	0	0	15	0	0	0
P	Deep Creek	252	6	61	0	0	0	0	0	37	0	0	0
P	Kasilof River above Highway	104	5	127	4	0	0	4	0	0	0	0	0
P	Kasilof River below Highway	7,738	2,695	876	278	0	5	1	0	32	0	0	0
P	Kenai River - Cook Inlet to Soldotna Bridge	21,997	3,684	7,686	2,175	0	45	0	0	38	0	0	0
P	Kenai River - guided, reach not specified	118	3	33	50	0	0	0	0	1	0	0	0
P	Kenai River - Moose River to Skilak outlet	4,076	65	1,958	5,393	0	24	0	0	30	0	0	0
P	Kenai River - Skilak Inlet to Kenai Lake	7,165	4	249	2,751	0	63	0	1	133	0	0	0
P	Kenai River - Soldotna Bridge to Moose R	1,885	36	735	1,935	0	12	0	0	12	0	0	0
P	Other lakes	91	0	0	0	0	7	0	0	0	2	0	0
P	Other streams	350	10	136	0	0	0	0	0	8	0	0	0
P	Quartz Creek	78	0	0	0	0	0	0	0	0	0	0	0
P	Russian River	152	0	0	68	0	1	0	0	0	0	0	0
Q	Afognak Island streams	82	0	200	17	0	0	0	0	2	0	0	0
Q	Afognak River (Litnik Stream)	90	0	178	128	0	10	0	0	0	0	0	0
Q	Ayakulik River (Red River)	539	64	355	77	0	0	3	0	65	0	0	0
Q	Dog Salmon Creek (Frazer River)	343	0	210	783	0	0	0	0	25	0	0	0
Q	Karluk Lake and River above Weir	483	0	25	13	0	0	8	0	77	0	0	0
Q	Olds River	73	4	44	0	0	0	0	0	0	0	0	0
Q	Other remote lakes	29	0	59	1	0	0	0	0	25	0	0	0
Q	Other remote streams	1,106	4	739	579	0	0	0	0	163	0	0	0
Q	Pasagshak River	83	0	58	11	0	0	0	0	8	0	0	0
Q	Roadside lakes	182	0	95	0	0	0	0	0	40	0	0	0

-continued-

Area	Site	Angler Days	Salmon			Trout				Dolly			
			Kings	Coho	Sockeye	Cutthroat	Rainbow	Steelhead	Lake	Varden	Grayling	Pike	Sheefish
Q	Roadside streams	231	14	38	24	0	0	0	0	45	0	0	0
Q	Saltery River	1,587	0	473	1,863	0	0	0	0	77	0	0	0
R	American Creek	1,220	0	0	0	0	11	0	0	23	0	0	0
R	Becharof System	347	0	26	27	0	3	0	0	30	5	1	0
R	Brooks Lake	26	0	0	1	0	0	0	0	0	0	0	0
R	Brooks River	1,090	0	0	3	0	6	0	0	0	0	0	0
R	Contact Creek	165	2	0	2	0	0	0	0	2	0	0	0
R	Egegik River (Becharof System)	627	0	1,850	115	0	0	0	0	30	0	0	0
R	Naknek River <sup>a</sup>	667	245	437	72	0	1	0	0	0	0	18	0
R	Naknek River <sup>b</sup>	1,709	62	556	1,734	0	8	0	0	0	0	0	0
R	Naknek River and Tributaries	1,786	301	907	254	0	0	0	0	0	3	0	0
R	Other lakes	63	19	0	183	0	0	0	0	25	0	0	0
R	Other streams	3,025	492	1,945	542	0	4	0	0	189	0	0	0
R	Ugashik System	406	20	48	9	0	0	0	0	24	0	0	0
S	Alagnak (Branch) River	2,991	345	442	2,696	0	3	0	55	8	16	0	0
S	Battle River	355	1	1	3	0	0	0	0	0	0	0	0
S	Copper River (Lake Iliamna Area)	1,370	18	0	233	0	0	0	0	0	0	0	0
S	Funnel Creek	124	0	0	0	0	0	0	0	0	0	0	0
S	Gibraltar River	203	0	1	63	0	0	0	0	0	0	0	0
S	Iliamna River	363	0	0	269	0	0	0	0	0	0	0	0
S	Kijik Lake	13	0	0	0	0	0	0	0	0	0	0	0
S	Kijik River	31	0	0	4	0	0	0	0	0	1	0	0
S	Kontrashibuna Lake	25	0	0	0	0	0	0	0	0	0	0	0
S	Kukaklek River (Big Ku) (into Alagnak)	256	0	0	63	0	0	0	1	0	0	0	0
S	Kulik River	1,231	0	0	0	0	0	0	0	0	0	0	0
S	Kvichak River	1,451	1	254	1,476	0	13	0	1	22	27	28	0
S	Lake Clark	125	0	0	10	0	0	0	4	0	6	2	0
S	Lake Iliamna	183	0	4	396	0	0	0	0	0	0	0	0

-continued-



Area	Site	Angler Days	Salmon			Trout				Dolly			
			Kings	Coho	Sockeye	Cutthroat	Rainbow	Steelhead	Lake	Varden	Grayling	Pike	Sheefish
S	Little Kulik (into Nanuktuk Creek)	53	0	0	0	0	0	0	0	0	0	0	0
S	Lower Talarik Creek	123	0	2	12	0	0	0	0	0	0	0	0
S	Moraine Creek	1,137	0	0	4	0	9	0	1	8	6	0	0
S	Nanuktuk Creek	167	0	0	0	0	0	0	0	0	0	0	0
S	Newhalen River	39	0	0	0	0	0	0	1	0	0	1	0
S	Nonvianuk River (into Alagnak)	172	0	1	12	0	0	0	39	0	0	0	0
S	Other Lakes and Streams	57	0	6	0	0	0	0	0	0	0	0	0
S	Tazimina River	138	0	0	12	0	1	0	2	1	1	0	0
S	Upper Talarik Creek	50	0	32	0	0	0	0	0	0	0	0	0
T	Agulowak River	1,185	11	10	876	0	27	0	0	44	17	11	0
T	Agulukpak River	560	0	0	0	0	2	0	0	23	3	0	0
T	Aleknagik Lake	156	0	18	21	0	0	0	0	7	0	8	0
T	Mulchatna River	187	12	123	23	0	4	0	0	49	11	4	0
T	Nushagak River <sup>c</sup>	1,653	796	193	6	0	0	0	0	3	0	0	0
T	Nushagak River <sup>d</sup>	2,403	1,304	1,244	27	0	1	0	0	33	3	0	0
T	Nushagak River <sup>e</sup> -	732	1	157	0	0	7	0	0	23	9	0	0
T	Other lakes	279	0	6	24	0	0	0	0	0	0	0	0
T	Other streams	534	44	46	39	0	0	0	0	6	0	0	0
T	Togiak River System	1,094	456	878	22	0	0	0	0	14	0	0	0
T	Wood River Lakes system	599	7	325	126	0	5	0	0	32	0	6	0
	Other lakes and streams	89	7	41	3	0	0	0	0	4	0	0	0
	Total Southcentral	99,661	12,782	38,158	35,121	4	404	16	120	1,748	205	396	0

Note: Responses with less than 4 businesses are not reported separately, to protect confidentiality of respondents. Data are current as of 05/16/2012.

<sup>a</sup> Naknek River (downstream from Rapids Camp, including tributaries).

<sup>b</sup> Naknek River (Rapids Camp upstream to Naknek Lake, including tributaries).

<sup>c</sup> Nushagak River (Black Point upstream to Sonar Site).

<sup>d</sup> Nushagak River (sonar site to outlet of Mulchatna).

<sup>e</sup> Nushagak River (upstream from mouth of Mulchatna River).

Appendix G7.—Freshwater logbook angler days and species kept by area and site, Arctic-Yukon-Kuskokwim Alaska, 2011.

Area	Site	Angler Days	Salmon			Trout				Dolly			
			Kings	Coho	Sockeye	Cutthroat	Rainbow	Steelhead	Lake	Varden	Grayling	Pike	Sheefish
I	Gulkana River mainstem (reach unknown)	167	59	0	12	0	0	0	0	0	15	0	0
I	Klutina River	953	387	0	189	0	3	0	0	93	2	0	0
I	Other lakes and streams	410	227	0	68	0	0	0	0	0	0	0	0
U	Lakes	328	0	0	0	0	115	0	0	30	14	133	0
U	Streams	1,354	2	85	0	0	0	0	0	0	20	0	0
V	Aniak River	592	12	46	0	0	0	0	0	13	14	7	4
V	Goodnews River	1,446	99	792	121	0	0	0	4	61	14	0	0
V	Holitna River	642	149	167	9	0	0	0	0	48	50	6	16
V	Kanektok River (Quinhagak, Chosen)	1,922	192	709	38	0	14	0	0	97	0	1	0
V	Kuskokwim River drainages <sup>a</sup>	452	2	46	0	0	0	0	0	3	1	0	0
V	Other lakes and streams - Kuskokwim Bay	370	4	61	4	0	0	0	0	10	0	0	0
V	Other streams - Kuskokwim drainages above Aniak	29	5	10	0	0	0	0	0	1	0	0	0
V	Telequana Lake	21	0	0	0	0	0	0	2	0	0	0	0
W	Streams	816	29	862	0	0	0	0	0	112	4	0	0
Y	Streams	965	163	153	0	0	0	0	0	11	191	41	2
	Other lakes and streams in AYK	283	0	0	0	0	0	0	0	119	15	6	69
	<b>Total AYK</b>	<b>10,750</b>	<b>1,330</b>	<b>2,931</b>	<b>441</b>	<b>0</b>	<b>132</b>	<b>0</b>	<b>6</b>	<b>598</b>	<b>340</b>	<b>194</b>	<b>91</b>

Note: Responses with less than 4 businesses are not reported separately, to protect confidentiality of respondents. Data are current as of 5/16/2012.

<sup>a</sup> Kuskokwim River drainages below and including Aniak River.

Appendix G8.—Freshwater logbook angler days and species kept by region, Statewide, 2011.

Region	Angler Days	Salmon			Cutthroat	Rainbow	Steelhead	Lake	Dolly		Pike	Sheefish
		Kings	Coho	Sockeye				Trout	Varden	Grayling		
Southeast	8,885	98	8,366	1,903	11	2	4	0	197	0	0	0
Southcentral	99,661	12,782	38,158	35,121	4	404	16	120	1,748	205	396	0
Arctic-Yukon-Kuskokwim	10,750	1,330	2,931	441	0	132	0	6	598	340	194	91
Total	119,296	14,210	49,455	37,465	15	538	20	126	2,543	545	590	91

*Note:* Data are current as of 05/16/2012.

Appendix G9.—Freshwater logbook angler days and species released by area and site, Southeast Alaska, 2011.

Area	Site	Angler Days	Salmon			Trout				Dolly Varden	Grayling	Pike	Sheefish
			Kings	Coho	Sockeye	Cutthroat	Rainbow	Steelhead	Lake				
A	Lakes and streams	383	0	43	2	704	415	5	0	138	0	0	0
B	Other lakes and streams	134	0	56	89	55	10	9	0	161	0	0	0
B	Staney Creek	104	0	17	2	6	5	6	0	82	0	0	0
B	Thorne River and Lake	52	0	1	0	6	4	35	0	275	0	0	0
C	Lakes and streams	187	0	39	0	123	19	147	0	32	0	0	0
D	Baranof Island streams and lakes	461	5	67	5	453	121	10	0	727	0	0	0
D	Chichagof Island streams and lakes	125	0	3	0	53	38	4	0	714	0	0	0
D	Eva Lake and Stream (Baranof Island)	74	0	5	0	168	33	0	0	59	0	0	0
D	Nakwasina Sound streams (Baranof Island)	183	0	23	0	6	3	0	0	201	0	0	0
D	Other lakes and streams	41	0	23	0	0	50	0	0	9	0	0	0
D	Plotnikof System Stream and Lake (Baranof Island)	48	0	13	0	0	0	7	0	1	0	0	0
D	Rezanof System Stream and lakes (Baranof Island)	27	0	0	0	0	4	25	0	11	0	0	0
D	Saook Bay streams (Baranof Island)	146	0	0	0	0	0	0	0	114	0	0	0
D	Sitkoh Creek and Lake (Chichagof Island)	67	0	3	0	431	203	7	0	156	0	0	0
E	Admiralty Island streams (Admiralty Island)	657	0	12	0	18	0	0	0	2,010	0	0	0
E	Other lakes and streams	752	0	58	0	5	0	4	0	2,182	0	0	0
G	Mud Bay Creek (Chichagof Island)	72	0	0	0	0	0	0	0	138	0	0	0
G	North Chichagof Island streams	349	7	30	0	58	0	0	0	524	0	0	0
G	Trail River (Chichagof Island)	111	0	10	0	1	2	0	0	79	0	0	0
H	Other lakes and streams	1,604	43	12,485	868	90	31	8	0	131	0	0	0
H	Situk River (above weir)	1,323	2	2,787	1,860	0	1	1,379	0	34	0	0	0
H	Situk River (below weir)	75	1	25	43	0	1	0	0	1	0	0	0
H	Tsiu River	1,770	0	23,817	6	0	0	2	0	5	0	0	0
	Other lakes and streams in Southeast	140	0	46	25	8	0	0	0	108	0	0	0
	Total Southeast	8,885	58	39,563	2,900	2,185	940	1,648	0	7,892	0	0	0

Note: Responses with less than 4 businesses are not reported separately, to protect confidentiality of respondents. Data are current as of 05/16/2012.

Appendix G10.—Freshwater logbook angler days and species released by area and site, Southcentral Alaska, 2011.

Area	Site	Angler Days	Salmon			Trout				Dolly			
			Kings	Coho	Sockeye	Cutthroat	Rainbow	Steelhead	Lake	Varden	Grayling	Pike	Sheefish
J	Lakes and Streams	362	4	487	97	66	38	0	0	423	0	0	0
K	Lakes and Streams	1,094	13	52	0	0	53	0	0	4	0	0	0
M	Chulitna River	70	6	14	0	0	193	0	0	1	25	0	0
M	Chunilna Creek (Clear Creek)	227	15	28	2	0	78	0	0	25	3	0	0
M	Deshka River (Kroto Creek) above weir	375	99	38	0	0	62	0	0	0	1	1	0
M	Deshka River (Kroto Creek) below weir	781	87	30	0	0	25	0	0	0	1	0	0
M	Fish Lake Creek and Fish lakes (Yentna drainage)	103	10	10	0	0	0	0	0	0	0	67	0
M	Indian Creek (into Yentna near Fish Lakes)	285	12	96	0	0	5	0	0	0	0	0	0
M	Kashwitna River	210	9	13	3	0	41	0	0	0	2	0	0
M	Lake Creek	3,735	386	1,035	692	0	5,812	0	0	125	667	1	0
M	Other Lakes and Streams-Chulitna/East Susitna drainage	131	14	15	0	0	31	0	0	0	107	0	0
M	Other Lakes and Streams - West Susitna drainage	99	18	122	0	0	9	0	0	10	9	112	0
M	Talachulitna River	933	475	535	185	0	820	0	0	38	236	0	0
M	Talkeetna River	1,552	287	323	174	0	69	0	0	252	35	0	0
M	Willow Creek	76	0	9	3	0	182	0	0	3	37	0	0
M	Yentna River	296	8	23	40	0	61	0	0	0	1	0	0
M	Yentna River drainage (Remainder)	1,531	546	1,506	355	0	1,980	0	44	654	284	0	0
N	Bachatna Creek	35	0	54	0	0	0	0	0	6	0	0	0
N	Big River	462	0	64	231	0	0	0	0	25	0	0	0
N	Big River Lakes	2,844	0	584	3,157	0	13	0	0	69	0	0	0
N	Chuitna River	151	22	148	0	0	73	0	0	12	0	0	0
N	Crescent Lake	316	3	16	586	0	9	0	62	1,105	4	0	0
N	Kamishak River	357	0	743	34	0	0	0	0	3,268	0	0	0
N	Kustatan River	1,115	0	306	5	0	0	0	0	154	0	0	0
N	Other Sites (South of North Forelands)	231	0	227	8	0	0	0	3	547	19	0	0
N	Other Sites between N Forelands and Susitna drainage	43	0	7	11	0	65	0	0	139	1	0	0
N	Wolverine Creek mouth (by Big River Lakes)	2,024	0	175	2,319	0	0	0	0	2	0	0	0
P	Anchor River	130	13	9	0	0	3	7	0	575	0	0	0
P	Deep Creek	252	21	6	0	0	1	5	0	49	0	0	0

-continued-

Area	Site	Angler Days	Salmon			Trout			Dolly				
			Kings	Coho	Sockeye	Cutthroat	Rainbow	Steelhead	Lake	Varden	Grayling	Pike	Sheefish
P	Kasilof River above Highway	104	23	4	6	0	25	4	0	74	0	0	0
P	Kasilof River below Highway	7,738	946	17	20	0	138	81	0	384	0	0	0
P	Kenai River - Cook Inlet to Soldotna Bridge	21,997	1,814	138	516	0	3,729	0	0	2,855	1	0	0
P	Kenai River - guided, reach not specified	118	7	37	39	0	457	0	0	178	0	0	0
P	Kenai River - Moose River to Skilak outlet	4,076	34	261	2,362	0	15,372	0	12	8,826	53	0	0
P	Kenai River - Skilak Inlet to Kenai Lake	7,165	7	45	2,346	0	24,521	0	9	24,122	34	0	0
P	Kenai River - Soldotna Bridge to Moose R	1,885	65	77	427	0	3,781	0	0	2,129	0	0	0
P	Other lakes	91	0	0	0	0	107	0	0	95	365	0	0
P	Other streams	350	86	208	1	0	88	2	0	101	0	0	0
P	Quartz Creek	78	0	0	7	0	58	0	0	815	0	0	0
P	Russian River	152	0	2	238	0	455	0	0	116	0	0	0
Q	Afognak Island streams	82	0	33	0	0	7	1	0	81	0	0	0
Q	Afognak River (Litnik Stream)	90	0	28	7	0	22	4	0	28	0	0	0
Q	Ayakulik River (sometimes called Red River)	539	504	1,822	373	0	0	109	0	508	0	0	0
Q	Dog Salmon Creek (Frazer River)	343	1	82	757	0	5	0	0	103	0	0	0
Q	Karluk Lake and River above Weir	483	238	503	93	0	0	498	0	1,688	0	0	0
Q	Olds River	73	0	56	0	0	0	0	0	0	0	0	0
Q	Other remote lakes	29	0	24	28	0	0	2	0	11	0	0	0
Q	Other remote streams	1,106	57	1,056	410	0	188	18	0	4,750	0	0	0
Q	Pasagshak River	83	0	48	1	0	0	0	0	19	0	0	0
Q	Roadside lakes	182	0	288	22	0	4	0	0	262	0	0	0
Q	Roadside streams	231	1	141	11	0	4	0	0	317	0	0	0
Q	Saltery River	1,587	0	887	1,363	0	64	12	0	1,807	0	0	0
R	American Creek	1,220	0	0	38	0	4,283	0	46	13,169	164	1	0
R	Becharof System	347	4	50	126	0	277	0	0	3,324	882	1	1
R	Brooks Lake	26	0	0	3	0	69	0	55	0	0	0	0
R	Brooks River	1,090	0	8	714	0	8,877	32	1	336	26	0	2
R	Contact Creek	165	57	28	3	0	185	0	0	2,448	615	0	0
R	Egegik River (Becharof System)	627	20	2,497	218	0	0	0	0	175	5	1	0
R	Naknek River <sup>a</sup>	667	170	92	27	0	425	0	1	8	51	10	0

-continued-

Area	Site	Angler Days	Salmon			Trout			Dolly				
			Kings	Coho	Sockeye	Cutthroat	Rainbow	Steelhead	Lake	Varden	Grayling	Pike	Sheefish
R	Naknek River <sup>b</sup>	1,709	197	222	771	0	5,043	0	1	656	276	7	0
R	Naknek River and Tributaries	1,786	433	432	366	0	3,566	0	836	5,648	1,246	93	1
R	Other Lakes	63	28	0	268	0	73	0	0	91	0	0	0
R	Other Streams	3,025	1,965	8,401	705	0	290	1	0	5,639	149	0	0
R	Ugashik System	406	95	245	194	0	0	0	33	2,697	381	0	0
S	Alagnak (Branch) River	2,991	1,675	608	4,408	0	3,130	0	964	637	1,835	1	0
S	Battle River	355	0	0	553	0	1,129	0	34	3	98	3	0
S	Copper River (Lake Iliamna Area)	1,370	37	0	660	0	10,429	0	0	464	10	167	0
S	Funnel Creek	124	0	0	109	0	608	0	0	21	0	0	0
S	Gibraltar River	203	0	0	115	0	1,096	0	3	18	4	1	0
S	Iliamna River	363	0	0	383	0	858	0	0	3,278	0	0	0
S	Kijik Lake	13	0	0	0	0	0	0	25	71	17	0	0
S	Kijik River	31	0	0	11	0	0	0	11	1	181	0	0
S	Kontrashibuna Lake	25	0	0	0	0	57	0	30	18	0	0	0
S	Kukaklek River (Big Ku) (into Alagnak)	256	0	0	484	0	1,244	0	131	20	81	3	0
S	Kulik River	1,231	0	0	216	0	12,723	0	764	1	0	0	0
S	Kvichak River	1,451	14	291	1,739	0	5,653	0	8	80	1,917	15	0
S	Lake Clark	125	0	0	0	0	8	0	6	6	326	542	0
S	Lake Iliamna	183	0	5	676	0	739	0	6	121	12	0	0
S	Little Kulik (into Nanuktuk Creek)	53	0	0	42	0	244	0	0	68	0	0	0
S	Lower Talarik Creek	123	0	9	124	0	914	0	0	0	0	0	0
S	Moraine Creek	1,137	0	6	216	0	7,913	0	58	139	477	0	0
S	Nanuktuk Creek	167	0	0	56	0	1,193	32	20	506	9	0	0
S	Newhalen River	39	0	0	0	0	22	0	8	7	44	41	0
S	Nonvianuk River (into Alagnak)	172	30	2	48	0	1,074	0	229	17	3	0	0
S	Other Lakes and Streams	57	0	5	16	0	351	0	0	168	0	4	0
S	Tazimina River	138	0	0	15	0	440	0	6	88	751	0	0
S	Upper Talarik Creek	50	0	12	0	0	280	0	0	8	0	0	0
T	Agulowak River	1,185	3	10	866	0	5,141	0	0	4,145	2,039	225	0
T	Agulukpak River	560	0	0	187	7	2,789	0	0	4,017	871	221	0

-continued-

Area	Site	Angler Days	Salmon			Trout			Lake	Dolly			
			Kings	Coho	Sockeye	Cutthroat	Rainbow	Steelhead		Varden	Grayling	Pike	Sheefish
T	Aleknagik Lake	156	0	16	26	0	66	0	0	450	27	487	0
T	Mulchatna River	187	71	175	105	0	181	0	21	206	296	7	0
T	Nushagak River <sup>c</sup>	1,653	7,127	129	1	0	0	0	0	16	2	0	0
T	Nushagak River <sup>d</sup>	2,403	7,800	1,969	65	0	22	0	30	50	127	5	0
T	Nushagak River <sup>e</sup>	732	33	323	38	0	1,990	0	1	3,655	2,543	21	0
T	Other Lakes	279	32	124	149	0	336	0	398	801	1,510	19	0
T	Other Streams	534	271	1,097	245	0	288	0	1	1,122	730	53	0
T	Togiak River System	1,094	2,484	1,230	16	0	491	0	0	2,762	41	8	0
T	Wood River Lakes system	599	42	125	564	0	556	0	0	1,721	983	688	0
	Other Lakes and Streams in Southcentral	89	9	25	0	0	7	0	1	72	0	0	0
	Total Southcentral	99,661	28,428	30,568	32,495	73	143,708	808	3,858	115,703	20,614	2,805	4

Note: Responses with less than 4 businesses are not reported separately, to protect confidentiality of respondents. Data are current as of 05/16/2012.

<sup>a</sup> Naknek River (downstream from Rapids Camp including tributaries).

<sup>b</sup> Naknek River (Rapids Camp upstream to Naknek Lake, including tributaries).

<sup>c</sup> Nushagak River (Black Point upstream to Sonar Site).

<sup>d</sup> Nushagak River (sonar site to outlet of Mulchatna River).

<sup>e</sup> Nushagak River (upstream from mouth of Mulchatna River).



Appendix G11.–Freshwater logbook angler days and species released by area and site, Arctic-Yukon-Kuskokwim Alaska, 2011.

Area	Site	Angler Days	Salmon			Trout				Dolly			
			Kings	Coho	Sockeye	Cutthroat	Rainbow	Steelhead	Lake	Varden	Grayling	Pike	Sheefish
I	Gulkana River mainstem (reach unknown)	167	172	0	83	0	120	1	2	0	600	0	0
I	Klutina River	953	445	0	75	0	4	0	0	442	22	0	0
I	Other lakes and streams	410	377	0	21	0	8	4	0	0	6	0	0
U	Lakes	328	0	0	0	0	103	0	0	10	317	333	0
U	Streams	1,354	4	65	0	0	0	0	1	32	8,441	73	0
V	Aniak River	592	500	869	29	0	1,732	0	0	4,143	1,357	101	47
V	Goodnews River	1,446	539	5,087	138	0	1,293	0	84	5,863	643	0	0
V	Holitna River	642	212	116	11	0	2	0	0	1,426	1,473	1,233	383
V	Kanektok River (Quinhagak, Chosen)	1,922	662	4,027	239	0	4,611	0	26	12,189	1,731	6	0
V	Kuskokwim River drainages <sup>a</sup>	452	35	590	16	0	808	0	13	1,652	858	10	0
V	Other lakes and streams - Kuskokwim Bay	370	59	442	53	0	789	0	299	1,386	174	3	0
V	Other streams - Kuskokwim drainages above Aniak	29	9	65	0	0	23	0	0	40	71	28	6
V	Telequana Lake	21	0	0	0	0	0	0	26	0	77	30	0
W	Streams	816	589	5,990	0	0	0	0	0	3,102	2,904	1	0
Y	Streams	965	703	646	49	0	0	0	5	647	6,236	3,274	43
	Other lakes and streams in Arctic-Yukon-Kuskokwim	283	1	0	0	0	0	0	1	215	250	23	360
	Total Arctic-Yukon-Kuskokwim	10,750	4,307	17,897	714	0	9,493	5	457	31,147	25,160	5,115	839

Note: Responses with less than 4 businesses are not reported separately, to protect confidentiality of respondents. Data are current as of 05/16/2012.

<sup>a</sup> Kuskokwim River drainages below and including Aniak River

Appendix G12.–Freshwater logbook angler days and species released by region, Statewide, 2011.

Region	Angler Days	Salmon			Trout				Dolly Varden	Grayling	Pike	Sheefish
		Kings	Coho	Sockeye	Cutthroat	Rainbow	Steelhead	Lake				
Southeast	8,885	58	39,563	2,900	2,185	940	1,648	0	7,892	0	0	0
Southcentral	99,661	28,428	30,568	32,495	73	143,708	808	3,858	115,703	20,614	2,805	4
Arctic-Yukon-Kuskokwim	10,750	4,307	17,897	714	0	9,493	5	457	31,147	25,160	5,115	839
Total	119,296	32,793	88,028	36,109	2,258	154,141	2,461	4,315	154,742	45,774	7,920	843

Note: Data are current as of 05/16/2012.

**APPENDIX H**  
**SALTWATER LOGBOOK SUMMARIES BY AREA AND**  
**PORT OF OFFLOADING**

Appendix H1.—Saltwater logbook salmon participation, effort, kept and released by area and port of offloading, Southeast Alaska, 2011.

Area	Port of Offloading	Businesses <sup>a</sup>	Vessels <sup>a</sup>	Trips	Anglers	King				Coho Kept	Sockeye Kept	Other Salmon Kept
						Large		Small				
						Kept	Released	Kept	Released			
A	Ketchikan	70	93	4,420	17,647	2,570	211	429	2,229	12,349	68	19,155
A	Knudson Cove	19	21	1,048	4,409	468	25	47	620	2,753	46	5,324
A	Other	12	35	947	2,424	574	71	59	823	4,524	13	2,842
B	Coffman Cove	5	5	116	501	29	6	5	129	1,442	2	39
B	Craig	21	41	1,128	3,790	2,192	471	62	49	13,992	70	1,051
B	Klawock	7	15	358	1,101	688	113	22	14	4,056	9	347
B	Thorne Bay	6	10	306	1,074	49	16	5	306	1,723	17	1,081
B	Other	19	63	3,062	12,496	6,196	1,844	133	951	30,145	134	6,117
C	Petersburg	24	31	553	2,080	119	27	14	54	2,067	8	556
C	Wrangell	9	9	130	506	100	9	0	96	383	0	18
C	Other	5	8	113	397	62	4	6	8	723	0	102
D	Port Alexander	4	5	147	575	144	21	3	7	1,889	59	82
D	Sitka	93	151	7,211	29,629	21,969	6,858	260	2,502	59,989	280	8,870
D	Other	10	21	470	1,466	326	98	20	58	4,337	19	504
E	Angoon	9	16	430	1,618	146	14	12	96	5,725	12	922
E	Auke Bay	31	40	2,054	8,813	381	88	55	727	5,638	38	5,920
E	Juneau	19	35	438	1,670	46	3	8	51	960	1	329
E	Other	8	23	721	2,907	127	11	10	112	3,451	30	2,615
F1	Skagway	4	4	317	1,138	119	5	6	682	1	0	10
G	Bartlett Cove	6	9	47	188	16	11	0	1	26	10	133
G	Elfin Cove	10	23	970	3,765	1,273	391	17	279	8,298	10	1,346
G	Excursion Inlet	5	6	692	2,227	9	4	11	46	1,896	1	6,603
G	Gustavus	15	27	1,224	5,088	808	109	15	175	4,824	158	3,512
G	Hoonah	10	11	315	1,465	19	14	3	10	270	0	232
G	Pelican	6	8	231	754	397	71	28	60	1,311	0	74
G	Other	4	4	50	222	55	30	2	0	91	3	123
H	Yakutat	8	12	705	2,873	182	57	15	37	3,778	8	75
	Other Southeast	3	3	84	297	36	17	0	359	0	0	23
	<b>Total Southeast</b>	<b>341</b>	<b>610</b>	<b>28,287</b>	<b>111,120</b>	<b>39,100</b>	<b>10,599</b>	<b>1,247</b>	<b>10,481</b>	<b>176,641</b>	<b>996</b>	<b>68,005</b>

Note: Participation (number of businesses, vessels, trips and angler days) was determined by number of trips, not targeted species. Responses with less than 4 businesses are not reported separately, to protect confidentiality of respondents. Data are current as of 05/04/2012.

<sup>a</sup> Business and vessel regional and total counts are not additive as they can offload at multiple ports.

Appendix H2.—Saltwater logbook salmon participation, effort, kept, and released by area and port of offloading, Southcentral Alaska, 2011.

Area	Port of Offloading	Businesses <sup>a</sup>	Vessels <sup>a</sup>	Trips	Anglers	King				Coho Kept	Sockeye Kept	Other Salmon Kept
						Large		Small				
						Kept	Released	Kept	Released			
J	Chenega	4	5	9	77	4	0	0	0	55	0	1
J	Cordova	4	4	84	368	1	0	0	0	160	4	3
J	Port Ashton	4	4	25	137	13	0	0	0	212	0	2
J	Seward	67	103	4,478	35,625	437	33	133	31	61,442	399	1,330
J	Valdez	32	38	1,029	5,617	7	4	21	23	9,249	60	132
J	Whittier	20	21	519	3,108	8	1	6	1	1,787	30	121
J	Other	7	8	100	459	3	0	6	3	620	8	46
P	Anchor Point	45	49	1,467	8,549	184	15	31	11	288	119	94
P	Deep Creek	56	81	3,132	18,913	435	10	76	14	125	12	59
P	Homer	105	125	5,372	44,583	1,754	84	361	55	4,581	316	1,795
P	Ninilchik	12	12	340	1,955	49	1	19	7	3	0	0
P	Seldovia	12	12	147	682	26	0	9	0	69	6	88
P	Other	8	18	389	1,386	146	4	6	0	102	4	2
Q	Kodiak	31	37	1,009	5,242	1,446	20	137	21	2,111	78	1,191
Q	Larsen Bay	8	13	428	1,807	39	13	24	27	2,421	2	15
Q	Port Lions	9	12	304	1,284	108	0	29	3	1,470	1	37
Q	Raspberry Island	5	5	55	242	48	1	17	1	192	18	5
Q	Ugak Bay	4	4	64	248	9	1	0	0	59	0	30
Q	Other	22	38	908	3,382	470	18	139	39	3,268	417	278
R	Other	8	10	136	421	14	0	0	0	69	0	5
	Other Southcentral	7	11	209	1,164	1	0	3	4	1,258	27	61
	Total Southcentral	345	469	20,204	135,249	5,202	205	1,017	240	89,541	1,501	5,295

Note: Participation (number of businesses, vessels, trips and angler days) was determined by number of trips, not targeted species. Responses with less than 4 businesses are not reported separately, to protect confidentiality of respondents. Data are current as of 05/04/2012.

<sup>a</sup> Business and vessel regional and total counts are not additive as they can offload at multiple ports.

Appendix H3.–Saltwater logbook salmon participation, effort, kept and released by region, Statewide, 2011.

Region	Businesses <sup>a</sup>	Vessels <sup>a</sup>	Trips	Anglers	King				Coho Kept	Sockeye Kept	Other Salmon Kept
					Large		Small				
					Kept	Released	Kept	Released			
Southeast	341	610	28,287	111,120	0	10,599	1,247	10,481	176,641	996	68,005
Southcentral	345	469	20,204	135,249	5,202	205	1,017	240	89,541	1,501	5,295
Total	686	1,079	48,491	246,369	44,302	10,804	2,264	10,721	266,182	2,497	73,300

*Note:* Participation (number of businesses, vessels, trips and angler days) was determined by number of trips, not targeted species. Responses with less than 4 businesses are not reported separately, to protect confidentiality of respondents. Data are current as of 05/04/2012.

<sup>a</sup> Business and vessel regional and total counts are not additive as they can offload at multiple ports.

Appendix H4.–Saltwater logbook bottomfish participation, effort, kept and released by area and port of offloading, Southeast Alaska, 2011.

Area	Port of Offloading	Businesses <sup>a</sup>	Vessels <sup>a</sup>	Trips	Anglers	Rockfish												
						Halibut		Lingcod		Pelagic		Yelloweye		Non-Pelagic		Sablefish		Shark
						Kept	Released	Kept	Released	Kept	Released	Kept	Released	Kept	Released	Kept	Released	Kept
A	Ketchikan	70	93	4,420	17,647	2,591	1,086	195	162	1,588	283	1,281	88	2,992	225	40	17	0
A	Knudson Cove	19	21	1,048	4,409	247	63	15	8	28	25	31	5	98	16	0	7	0
A	Other	12	35	947	2,424	908	116	67	33	1,018	51	214	3	357	13	1	1	0
B	Coffman Cove	5	5	116	501	331	137	9	2	26	0	10	1	72	0	7	0	0
B	Craig	21	41	1,128	3,790	2,839	1,255	573	371	4,693	159	688	81	1,440	67	8	0	0
B	Klawock	7	15	358	1,101	899	146	86	45	1,012	32	57	2	217	64	0	0	0
B	Thorne Bay	6	10	306	1,074	341	253	143	151	305	9	207	11	380	23	0	1	0
B	Other	19	63	3,062	12,496	7,640	2,840	1,118	639	8,605	742	1,334	40	2,474	247	6	20	0
C	Petersburg	24	31	553	2,080	1,122	1,976	22	30	743	30	75	0	174	9	0	5	0
C	Wrangell	9	9	130	506	53	53	7	3	16	2	10	0	15	0	3	0	0
C	Other	5	8	113	397	269	181	38	53	638	3	89	2	179	0	0	0	0
D	Port Alexander	4	5	147	575	228	167	44	40	56	2	64	1	47	6	4	1	0
D	Sitka	93	151	7,211	29,629	15,068	8,845	1,772	3,799	47,982	2,427	4,268	641	8,456	435	682	49	0
D	Other	10	21	470	1,466	727	424	23	43	628	293	134	13	265	20	0	0	0
E	Angoon	9	16	430	1,618	1,072	623	50	9	541	19	78	1	486	25	91	6	0
E	Auke Bay	31	40	2,054	8,813	2,066	1,873	16	20	686	28	76	1	880	49	2,113	34	0
E	Juneau	19	35	438	1,670	227	202	11	24	466	113	43	10	165	58	0	1	0
E	Other	8	23	721	2,907	1,996	1,014	52	150	2,708	136	353	17	1,047	127	2,105	6	0
F1	Skagway	4	4	317	1,138	0	0	0	0	0	0	0	0	0	0	0	0	0
G	Bartlett Cove	6	9	47	188	90	201	0	0	33	0	6	0	3	0	0	0	0
G	Elfin Cove	10	23	970	3,765	2,410	2,386	338	1,352	5,184	588	604	80	1,138	143	63	3	0
G	Excursion Inlet	5	6	692	2,227	2,488	3,167	7	10	17	71	4	1	19	5	1	5	0
G	Gustavus	15	27	1,224	5,088	4,009	6,481	215	298	1,951	27	343	5	391	4	1	7	0
G	Hoonah	10	11	315	1,465	621	2,121	6	9	5	3	2	0	12	15	0	1	0
G	Pelican	6	8	231	754	594	443	46	84	188	67	81	10	26	8	1	0	0
G	Other	4	4	50	222	128	42	10	16	46	0	7	0	9	0	0	0	0
H	Yakutat	8	12	705	2,873	2,801	373	518	127	2,234	53	75	5	303	7	1	2	0
	Other Southeast	3	3	84	297	29	63	0	0	0	0	0	0	0	0	0	0	0
	Total Southeast	341	610	28,287	111,120	51,794	36,531	5,381	7,478	81,397	5,163	10,134	1,018	21,645	1,566	5,127	166	0

Note: Participation (number of businesses, vessels, trips and angler days) was determined by number of trips, not targeted species. Responses with less than 4 businesses are not reported separately, to protect confidentiality of respondents. Data are current as of 05/04/2012.

<sup>a</sup> Business and vessel regional and total counts are not additive as they can offload at multiple ports.

Appendix H5.—Saltwater logbook bottomfish participation, effort, kept, and released by area and port of offloading, Southcentral Alaska, 2011.

Area	Port of Offloading	Businesses <sup>a</sup>	Vessels <sup>a</sup>	Trips	Anglers	Rockfish												
						Halibut		Lingcod		Pelagic		Yelloweye		Non-Pelagic		Sablefish		Shark
						Kept	Released	Kept	Released	Kept	Released	Kept	Released	Kept	Released	Kept	Released	Kept
J	Chenega	4	5	9	77	90	0	9	0	111	3	11	0	9	0	0	0	0
J	Cordova	4	4	84	368	354	163	149	75	189	126	162	16	46	2	0	0	0
J	Port Ashton	4	4	25	137	207	82	47	9	152	0	56	1	2	0	0	0	0
J	Seward	67	103	4,478	35,625	47,806	23,457	4,338	2,018	30,369	1,097	4,572	45	3,098	141	197	78	2
J	Valdez	32	38	1,029	5,617	5,839	4,971	1,275	569	2,307	90	1,157	89	382	16	3	9	0
J	Whittier	20	21	519	3,108	3,592	1,810	212	172	857	109	478	3	431	21	1	4	0
J	Other	7	8	100	459	318	95	16	51	383	32	38	3	44	5	3	0	0
P	Anchor Point	45	49	1,467	8,549	15,999	15,894	588	210	592	50	182	10	116	4	0	12	1
P	Deep Creek	56	81	3,132	18,913	36,175	48,874	42	40	213	1	40	9	7	4	0	26	1
P	Homer	105	125	5,372	44,583	82,172	113,560	4,485	1,967	10,573	927	1,412	77	918	352	46	85	2
P	Ninilchik	12	12	340	1,955	3,649	6,790	4	12	0	9	3	0	0	0	0	4	0
P	Seldovia	12	12	147	682	1,181	1,350	59	40	20	4	47	13	24	0	0	1	0
P	Other	8	18	389	1,386	2,178	3,824	2	0	6	1	10	8	22	0	0	1	0
Q	Kodiak	31	37	1,009	5,242	7,897	5,319	1,082	101	8,491	1,444	204	3	181	82	0	7	0
Q	Larsen Bay	8	13	428	1,807	2,744	7,801	69	42	775	145	133	24	57	34	0	0	0
Q	Port Lions	9	12	304	1,284	1,334	685	221	16	830	142	64	4	71	2	0	0	0
Q	Raspberry Island	5	5	55	242	321	401	5	0	50	51	2	0	0	3	0	0	0
Q	Ugak Bay	4	4	64	248	215	32	15	2	301	228	0	0	8	0	0	0	1
Q	Other	22	38	908	3,382	2,879	3,676	574	360	1,839	2,336	310	15	104	230	0	6	1
R	Other	8	10	136	421	453	538	14	4	158	71	1	0	5	0	0	0	0
	Other Southcentral	7	11	209	1,164	1,046	378	75	72	1,347	128	304	9	54	5	1	4	0
	Total Southcentral	345	469	20,204	135,249	216,449	239,700	13,281	5,760	59,563	6,994	9,186	329	5,579	901	251	237	8

Note: Participation (number of businesses, vessels, trips and angler days) was determined by number of trips, not targeted species. Responses with less than 4 businesses are not reported separately, to protect confidentiality of respondents. Data are current as of 05/04/2012.

<sup>a</sup> Business and vessel regional and total counts are not additive as they can offload at multiple ports.



Appendix H6.—Saltwater logbook bottomfish participation, effort, kept, and released by region, Statewide, 2011.

Region	Businesses <sup>a</sup>	Vessels <sup>a</sup>	Trips	Anglers	Rockfish												
					Halibut		Lingcod		Pelagic		Yelloweye		Non-Pelagic		Sablefish		Shark
					Kept	Released	Kept	Released	Kept	Released	Kept	Released	Kept	Released	Kept	Released	Kept
Southeast	341	610	28,287	111,120	51,794	36,531	5,381	7,478	81,397	5,163	10,134	1,018	21,645	1,566	5,127	166	0
Southcentral	345	469	20,204	135,249	216,449	239,700	13,281	5,760	59,563	6,994	9,186	329	5,579	901	251	237	8
Total	686	1,079	48,491	246,369	268,243	276,231	18,662	13,238	140,960	12,157	19,320	1,347	27,224	2,467	5,378	403	8

*Note:* Participation (number of businesses, vessels, trips and angler days) was determined by number of trips, not targeted species. Responses with less than 4 businesses are not reported separately, to protect confidentiality of respondents. Data are current as of 05/04/2012.

<sup>a</sup> Business and vessel regional and total counts are not additive as they can offload at multiple ports.