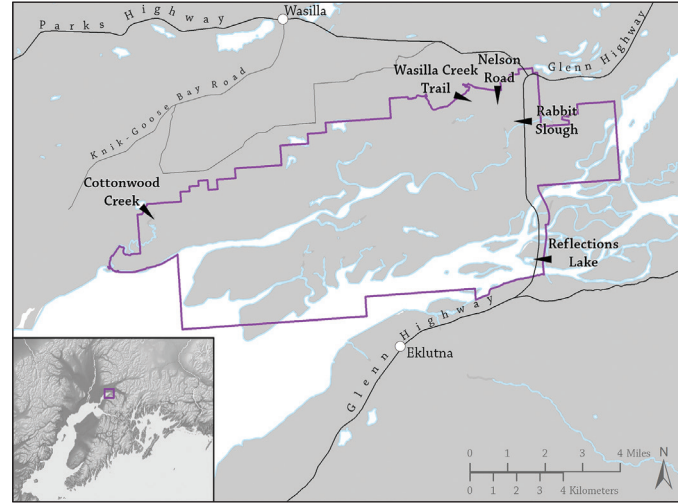




GREATER WHITE-FRONTED GOOSE



PALMER HAY FLATS REFUGE AND IMPORTANT BIRD AREA ACCESS POINTS



John Schoen

NORTHERN PINTAIL

ACCIDENTAL, CASUAL, UNSUBSTANTIATED KEY

- **Casual:** Occasionally seen, but not every year
- **Accidental:** Only one or two ever seen here
- x** **Unsubstantiated:** no photographic or sample evidence to support sighting
- w** Listed on the Audubon Alaska WatchList of declining or threatened species

SPECIES	SPRING	SUMMER	FALL	WINTER
Brant w				
Blue-winged Teal				
Cinnamon Teal				
Surf Scoter				
White-winged Scoter				
Black Scoter				
Long-tailed Duck				
Rock Ptarmigan				
Sora				
American Coot				
Pacific Golden-Plover				
Upland Sandpiper				
Red Phalarope				
Common Murre				
Black-legged Kittiwake				
Mourning Dove				
Snowy Owl				
Red-eyed Vireo				
Pacific Wren				
Marsh Wren				
Brown-headed Cowbird				
Red Crossbill				

Spring: March 16–May 31
 Summer: June 1–July 31
 Fall: August 1–November 30
 Winter: December 1–March 15

The Palmer Hay Flats encompass a rich estuary of about 45,000 acres. This mosaic of freshwater streams, silty glacial rivers, saltwater, lakes, ponds, marshes, bogs, mudflats exposed by forty-foot tides, and upland birch forests draws tens of thousands of ducks, geese, swans, shorebirds, and other birds when they stop to refuel during migration to and from northern nesting grounds. Many species of birds also stay to nest and raise young here.

About three-quarters of this area is protected within the Palmer Hay Flats State Game Refuge. The Alaska Department of Fish and Game manages the refuge, created in 1975, to protect wildlife habitat and allows compatible public uses. Palmer Hay Flats is one of Southcentral Alaska’s most popular birding locations. The fall waterfowl hunting season is open from September through mid-December, so take note if you are birding then. Visit www.refuges.adfg.alaska.gov for more information on the refuge.

The refuge is designated an Important Bird Area for the thousands of Canada Geese, Snow Geese, and Tundra Swans that rely on these wetlands during migration. Visit www.AudubonAlaska.org for more information about Important Bird Areas. Audubon Alaska uses science to identify and conserve important habitat for birds across Alaska, emphasizing public lands and waters.

For more information on Alaska bird festivals and birding maps for Anchorage, Fairbanks, and Kodiak, contact Audubon Alaska at www.AudubonAlaska.org or 907-276-7034.

For more information on birding in Alaska, visit www.birding.alaska.gov

Checklist Compiler
 Aaron Bowman, Audubon Alaska

Contributors



Reviewers

Bob Winckler, Dan Crowson, and David Sonneborn

For a full list of data sources, visit www.AudubonAlaska.org

Printed on sustainably-sourced paper with 10% post-consumer recycled content

FRONT COVER: NORTHERN HAWK OWL

Palmer Hay Flats

Audubon Important Bird Area and State Game Refuge

BIRD CHECKLIST



REVISED 2017

CHECKLIST KEY

- **Very Common:** Easily found in the right habitat and season
- **Common:** Found in the right habitat and season
- **Uncommon:** Found, with persistence, every year in the right habitat and season
- **Rare:** Seen in most years, but in small numbers
- **Casual:** Occasionally seen, but not every year
- N Documented nesting
- W Listed on the Audubon Alaska WatchList of declining or threatened species

WATERFOWL

	J	F	M	A	M	J	J	A	S	O	N	D
Greater White-fronted Goose W*												
Snow Goose												
Cackling Goose												
Canada Goose N												
Trumpeter Swan N												
Tundra Swan												
Gadwall N												
Eurasian Wigeon												
American Wigeon N												
Mallard N												
Northern Shoveler N												
Northern Pintail N												
Green-winged Teal N												
Canvasback N												
Redhead N												
Ring-necked Duck N												
Greater Scaup N												
Lesser Scaup												
Harlequin Duck												
Bufflehead												
Common Goldeneye												
Barrow's Goldeneye												
Hooded Merganser												
Common Merganser												
Red-breasted Merganser												

GROUSE

	J	F	M	A	M	J	J	A	S	O	N	D
Ruffed Grouse N												
Spruce Grouse N												
Willow Ptarmigan												

LOONS AND GREBES

Red-throated Loon NW												
Pacific Loon N												
Common Loon												
Horned Grebe N												
Red-necked Grebe N												

HERONS

	J	F	M	A	M	J	J	A	S	O	N	D
Great Blue Heron												

HAWKS AND EAGLES

Osprey N												
Golden Eagle												
Northern Harrier N												
Sharp-shinned Hawk												
Northern Goshawk												
Bald Eagle N												
Red-tailed Hawk* N												
Rough-legged Hawk												

CRANES

Sandhill Crane N												
---	--	--	--	--	--	--	--	--	--	--	--	--

PLOVERS

Black-bellied Plover												
American Golden-Plover W												
Semipalmated Plover N												
Killdeer												

SANDPIPERS

	J	F	M	A	M	J	J	A	S	O	N	D
Spotted Sandpiper N												
Solitary Sandpiper NW												
Wandering Tattler W												
Greater Yellowlegs												
Lesser Yellowlegs NW												
Whimbrel W												
Hudsonian Godwit W												
Ruddy Turnstone												
Sanderling												
Semipalmated Sandpiper												
Western Sandpiper												
Least Sandpiper N												
Baird's Sandpiper												
Pectoral Sandpiper												
Dunlin N												
Short-billed Dowitcher NW												
Long-billed Dowitcher												
Wilson's Snipe N												
Red-necked Phalarope N												

GULLS, TERNS,

	J	F	M	A	M	J	J	A	S	O	N	D
Bonaparte's Gull												
Mew Gull N												
Herring Gull N												
Glaucous-winged Gull N												
Glaucous Gull												
Arctic Tern N												
Parasitic Jaeger												
Long-tailed Jaeger												

PIGEONS

	J	F	M	A	M	J	J	A	S	O	N	D
Rock Pigeon (Introduced)												

OWLS

Great Horned Owl N												
Northern Hawk Owl												
Great Gray Owl N												
Short-eared Owl N												
Boreal Owl												
Northern Saw-whet Owl												

HUMMINGBIRDS

Rufous Hummingbird												
--------------------	--	--	--	--	--	--	--	--	--	--	--	--

KINGFISHERS

Belted Kingfisher N												
--	--	--	--	--	--	--	--	--	--	--	--	--

WOODPECKERS

Downy Woodpecker N												
Hairy Woodpecker N												
American Three-toed Woodpecker N												
Black-backed Woodpecker												
Northern Flicker												

FALCONS

	J	F	M	A	M	J	J	A	S	O	N	D
American Kestrel												
Merlin												
Gyr Falcon												
Peregrine Falcon												

FLYCATCHERS

Olive-sided Flycatcher NW												
Western Wood-Pewee N												
Alder Flycatcher N												

SHRIKES

Northern Shrike N												
--	--	--	--	--	--	--	--	--	--	--	--	--

JAYS, CROWS, RAVENS

Gray Jay												
Steller's Jay												
Black-billed Magpie N												
Common Raven N												

LARKS

Horned Lark												
-------------	--	--	--	--	--	--	--	--	--	--	--	--

SWALLOWS

Tree Swallow N												
Violet-green Swallow N												
Bank Swallow N												
Cliff Swallow N												

CHICKADEES

Black-capped Chickadee N												
Boreal Chickadee N												

NUTHATCHES, CREEPERS, DIPPERS

	J	F	M	A	M	J	J	A	S	O	N	D
Red-breasted Nuthatch N												
Brown Creeper N												
American Dipper												

KINGLETS

Ruby-crowned Kinglet N												
---	--	--	--	--	--	--	--	--	--	--	--	--

THRUSHES

Townsend's Solitaire												
Gray-cheeked Thrush												