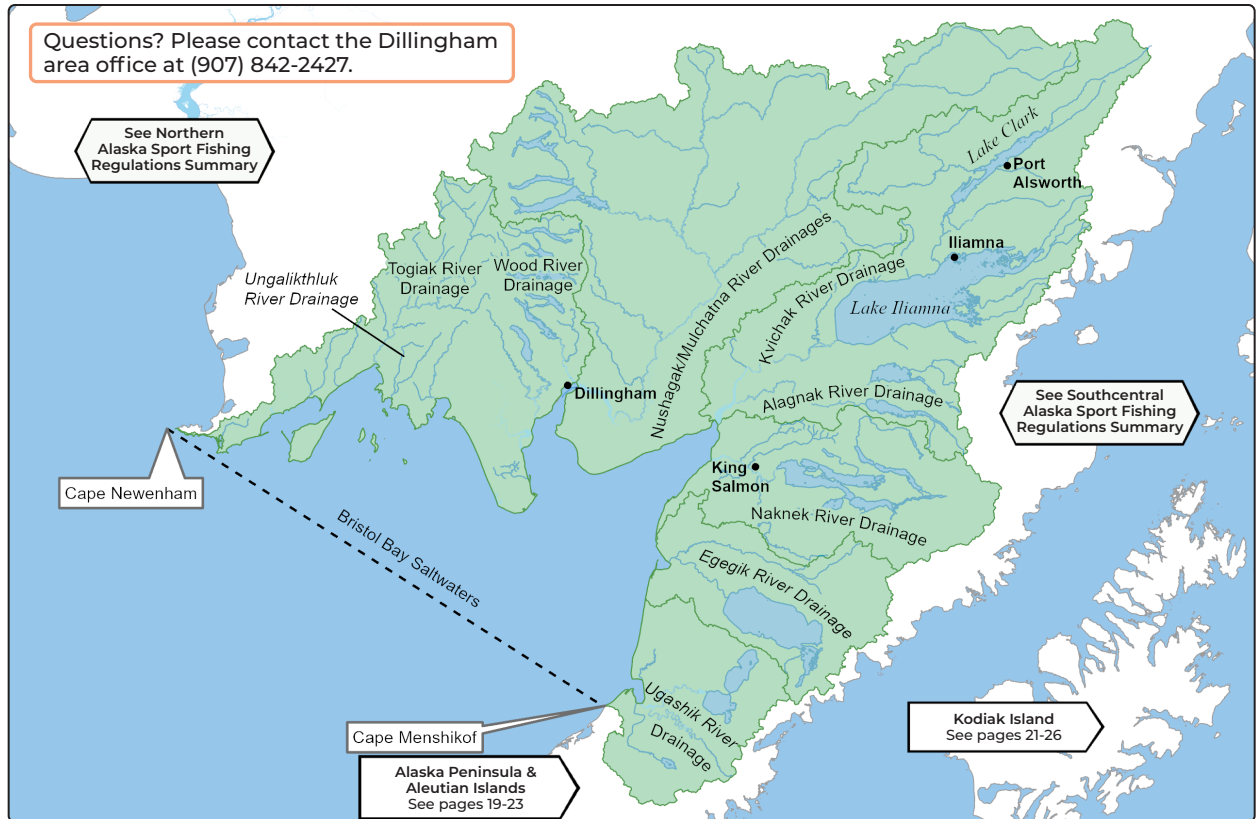


Questions? Please contact the Dillingham area office at (907) 842-2427.



GENERAL REGULATIONS - BRISTOL BAY

Inclusive waters: All fresh waters draining into Bristol Bay between Cape Menshikof and Cape Newenham, and all salt waters east of a line from Cape Newenham to Cape Menshikof.

Fishing is open year-round for all species unless otherwise noted below or in special regulations.

Check for emergency orders online at www.adfg.alaska.gov/sf/EONR prior to fishing.

KING SALMON

- **Season: May 1-July 31.**
- 20 inches or longer: There is an annual limit of 5 king salmon 20 inches or longer in Bristol Bay salt and fresh waters combined. Of those 5 total king salmon, no more than 4 may be harvested from the Nushagak/Mulchatna River Drainage, and no more than 2 may be harvested from the Wood River Drainage.
- If you retain a king salmon 20 inches or longer, you must immediately record that harvest. See page 5 for recording instructions.
- **Fresh Waters:**
 - 20 inches or longer: 3 per day, 3 in possession, only 1 of which may be 28 inches or longer.
 - Less than 20 inches: 10 per day, 10 in possession.
 - King salmon removed from the water must be retained. Any king salmon removed from the fresh water drainages of Bristol Bay from Cape Menshikof to Cape Newenham **MUST BE RETAINED** and becomes part of the bag limit of the person who originally hooked it. If you intend to release a king salmon, you may not remove it from the water before releasing it.

• **Salt Waters:**

- 3 per day, 3 in possession, only 2 of which may be 28 inches or longer.
- King salmon removed from the water must be retained. Any king salmon removed from the salt water of Bristol Bay from Cape Menshikof to Cape Newenham **MUST BE RETAINED** and becomes part of the bag limit of the person who originally hooked it. If you intend to release a king salmon, you may not remove it from the water before releasing it.

OTHER SALMON

- 5 per day, 5 in possession.

ARCTIC CHAR & DOLLY VARDEN

- **Season: June 8-October 31.**
• 3 per day, 3 in possession.
- **Season: November 1-June 7.**
• 10 per day, 10 in possession.

RAINBOW TROUT

- **Season: June 8-October 31.**
• 2 per day, 2 in possession, only 1 of which may be 20 inches or longer.
- **Season: November 1-June 7.**
• 5 per day, 5 in possession, only 1 of which may be 20 inches or longer.

ARCTIC GRAYLING

- 2 per day, 2 in possession.

LAKE TROUT

- 4 per day, 4 in possession.

NORTHERN PIKE

- 5 per day, 5 in possession, only 1 of which may be 30 inches or longer.

BURBOT

- 15 per day, 15 in possession.

HALIBUT

Pacific halibut fisheries are managed by the federal government under international treaty. See page 7 for federal contact information.

• Season: **February 1-December 31.**

- **Unguided anglers:** 2 per day, 4 in possession.
- **Consult federal regulations for the following:**
 - Bag, possession and size limits, and other regulations for guided (charter) anglers.
- **Filleting requirements for fish cleaned at sea:**
 - No person shall possess on board a vessel, including charter vessels and pleasure craft used for fishing, Pacific halibut that have been filleted, mutilated, or otherwise disfigured in any manner, except that each Pacific halibut may be cut into no more than 2 ventral pieces, 2 dorsal pieces, and 2 cheek pieces, with a patch of skin on each piece, naturally attached.

LINGCOD

- No limit.

ROCKFISH

- No limit.

KING CRAB

• Season: **June 1-January 31.**

- Males only: 6 per day, 6 in possession, 6½ inches or more. A shellfish harvest recording form is required.

DUNGENESS CRAB

- Males only: 12 per day, 12 in possession, 6½ inches or more. A shellfish harvest recording form is required.

TANNER CRAB

- Males only: 12 per day, 12 in possession, 5½ inches or more. A shellfish harvest recording form is required.

SHARKS (EXCEPT SPINY DOGFISH)

- 1 per day, 1 in possession, no size restrictions.
- Annual limit of 2 sharks. Harvest record required. See page 5 for recording instructions.

SPINY DOGFISH

- 5 per day, 5 in possession, no size limit. A harvest record is not required.

OTHER FINFISH

- No limit.

METHODS AND MEANS - BRISTOL BAY

CHUMMING:

- In waters closed to the use of bait, sport fishing guides and guided anglers are prohibited from placing in the water any substance (bait) for the purpose of attracting fish by scent.

SPORT FISHING GUIDES AND THE RETENTION OF FISH:

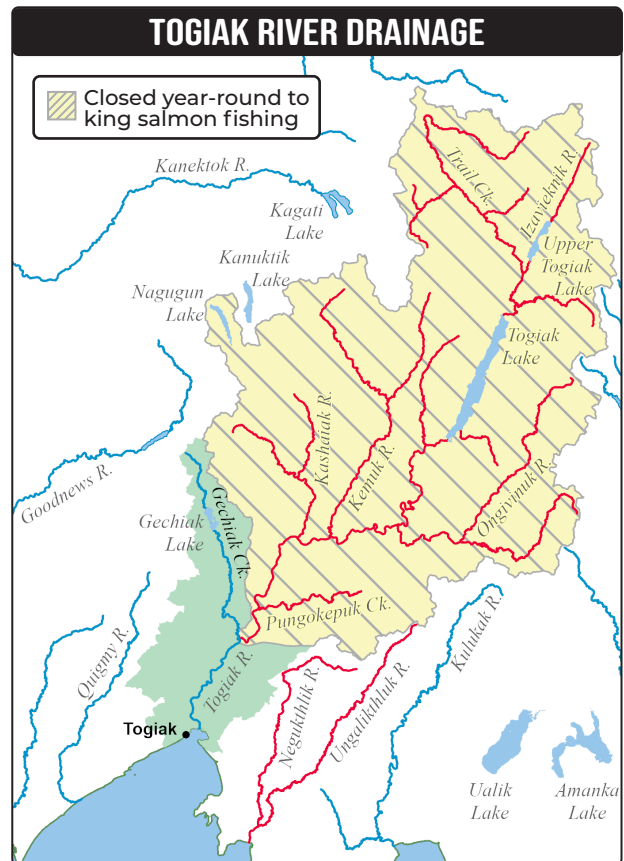
- A sport fishing guide may not retain fish while the guide is accompanying or personally directing the angler in fishing activities during any portion of a guided fishing trip.

SPECIAL REGULATIONS - BRISTOL BAY TOGIAK RIVER DRAINAGE

TOGIAK RIVER DRAINAGE:

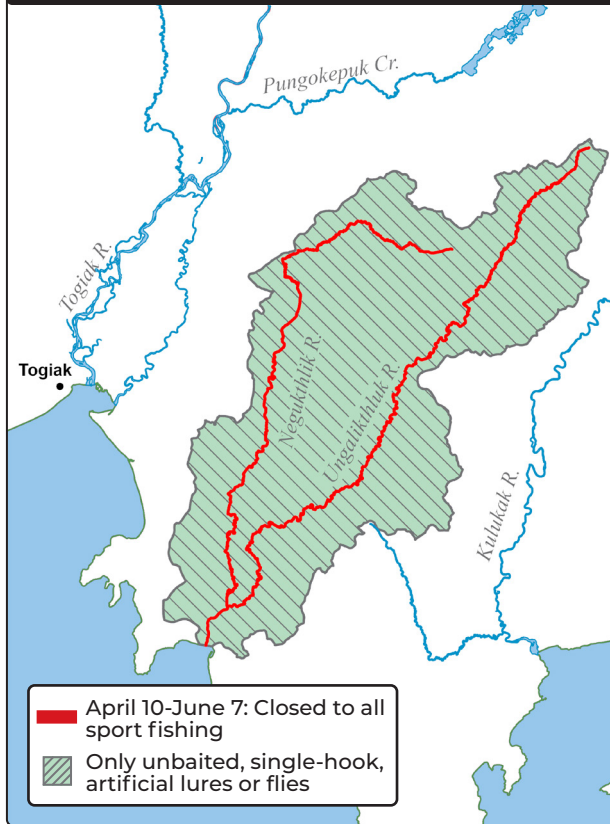
- Unbaited, single-hook, artificial lures or flies may be used year-round.
- **July 16-April 30: Bait is allowed.**
- King salmon:
 - 20 inches or longer: No retention allowed. All king salmon 20 inches or longer caught may not be removed from the water and must be released immediately.
 - Less than 20 inches: 10 per day, 10 in possession.
- **Upstream of the confluence of Gechiak Creek and the Togiak River:**
 - **Closed year-round to king salmon fishing.**

...continued



Solo fishing day on the Kulik River.

UNGALIKTHLUK RIVER DRAINAGE



SPECIAL REGULATIONS - BRISTOL BAY UNGALIKTHLUK RIVER DRAINAGE

UNGALIKTHLUK RIVER DRAINAGE - including the Negukthlik River:

- **June 8-April 9:** Open to sport fishing.
- Only unbaited, single-hook, artificial lures or flies may be used.
- Rainbow trout:
 - **June 8-October 31:** Catch-and-release fishing only. All rainbow trout caught must be released immediately.
 - **November 1-April 9:** 5 per day, 5 in possession, only 1 of which may be 20 inches or longer.

SPECIAL REGULATIONS - BRISTOL BAY WOOD RIVER DRAINAGE

WOOD RIVER DRAINAGE:

- Open to sport fishing year-round for species other than king salmon.
- **May 1-July 31:** Open to king salmon fishing.
 - King salmon:
 - 20 inches or longer: 1 per day, 1 in possession, only 1 of which may be 28 inches or longer.
 - There is an annual limit of 2 king salmon over 20 inches taken from the Wood River drainage.
 - All harvested king salmon 20 inches or longer must be recorded; see page 5.
 - Less than 20 inches: 10 per day, 10 in possession.

- **Agulowak River - from an ADF&G regulatory marker at the outlet of Lake Nerka, downstream to Lake Aleknagik, including waters of Lake Aleknagik within ½ mile of the Agulowak River outlet:**

- Only unbaited, single-hook, artificial lures or flies may be used.
- Rainbow trout: 1 per day, 1 in possession.
- Arctic char/ Dolly Varden: 2 per day, 2 in possession.

- **Agulupak River - from the outlet of Lake Beverly to the island located 1.2 miles downstream:**

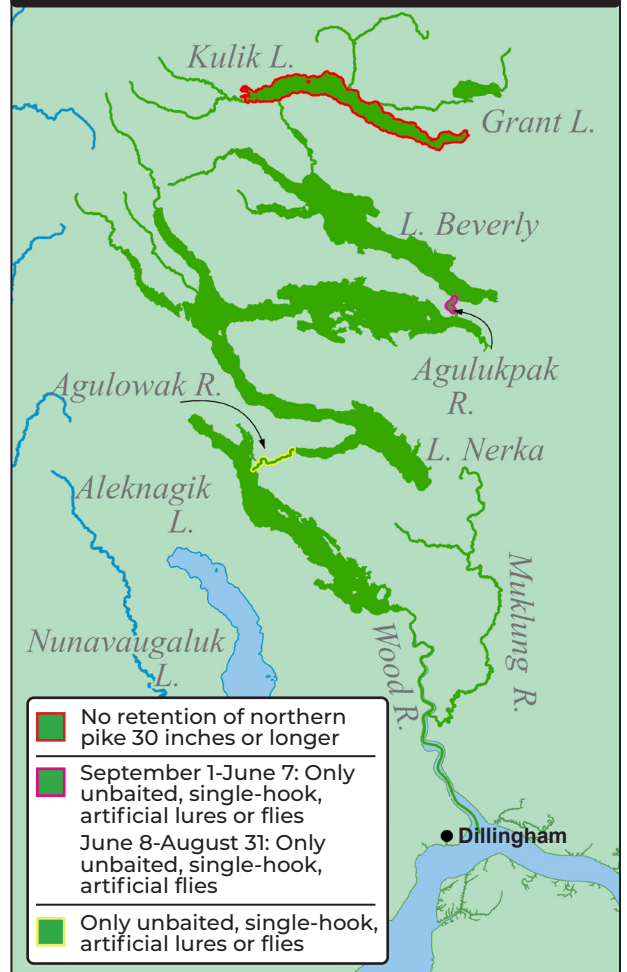
- **September 1-June 7:** Only unbaited, single-hook, artificial lures or flies may be used.
- **June 8-August 31:** Only unbaited, single-hook, artificial flies may be used.
- Rainbow trout:
 - **June 8-October 31:** Catch-and-release fishing only. All rainbow trout caught must be released immediately.
 - **November 1-June 7:** 5 per day, 5 in possession, only 1 of which may be 20 inches or longer.

- **Kulik Lake:**

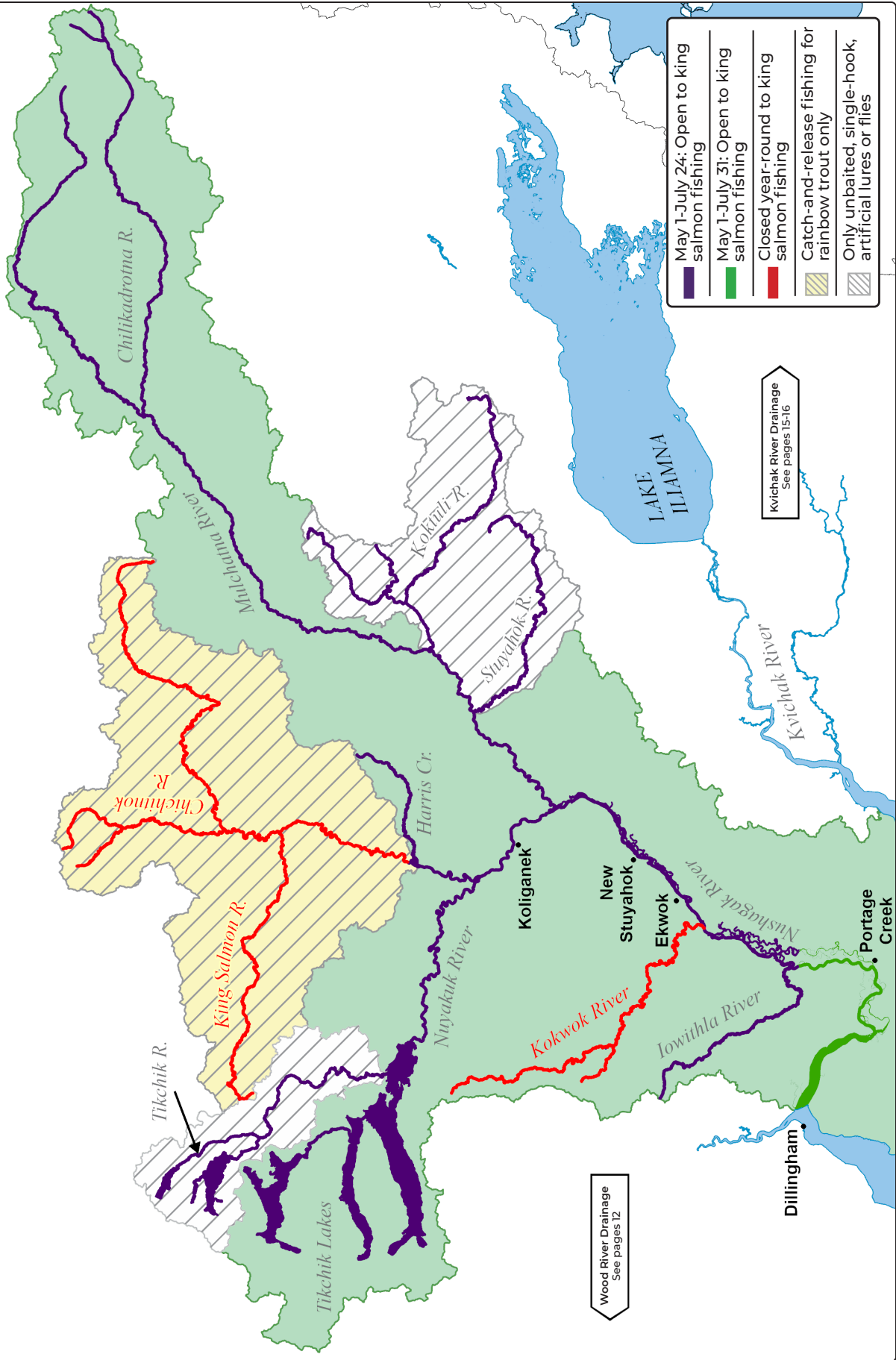
- Northern pike:
 - Less than 30 inches: 5 per day, 5 in possession.
 - 30 inches or longer: No retention of northern pike. All northern pike 30 inches or longer caught must be released immediately.

...continued

WOOD RIVER DRAINAGE



NUSHAGAK/MULCHATNA RIVER DRAINAGE



The Nushagak/Mulchatna Chinook and Coho Salmon Management Plans may require inseason adjustments to special regulations by emergency orders for seasons, bag limits, gear, and waters open to fishing, depending on escapement levels of Chinook or coho salmon. Please see page 3 for more information on how to check for emergency orders in the area you are fishing.

SPECIAL REGULATIONS - BRISTOL BAY NUSHAGAK/MULCHATNA RIVER DRAINAGE

NUSHAGAK/MULCHATNA DRAINAGE:

- Open to sport fishing year-round for species other than king salmon.
- **May 1-July 31:** Only one single-hook lure or fly, or one single-hook may be used. The use of bait is allowed during this time, **except for that portion upstream of the confluence of Harris Creek, see below.** Refer to pages 6-7 for the number of allowable hooks per targeted species.
- **August 1-April 30:** Bait and multiple hooks are allowed.
- **In waters of the Nushagak/Mulchatna River drainage open to king salmon fishing:**
 - King salmon:
 - 20 inches or longer: 2 per day, 2 in possession, only 1 of which may be 28 inches or longer.
 - After taking a bag limit of king salmon 20 inches or longer from the Nushagak/Mulchatna River drainage, you may only use **one unbaited, single-hook, artificial lure or fly** in the Nushagak/Mulchatna River drainage for the remainder of the day.
 - There is an annual limit of 4 king salmon over 20 inches taken from the entire Nushagak/Mulchatna drainage, only 1 of which may be 28 inches or longer.
 - All harvested king salmon 20 inches or longer must be recorded. See page 5 for recording instructions.
 - Less than 20 inches: 5 per day 5 in possession.
- **From its confluence with the lowithla River, upstream to Harris Creek, including the lowithla River:**
 - **May 1-July 24:** Open to king salmon fishing.
- **Upstream of its confluence with Harris Creek:**
 - **Closed year-round to king salmon fishing.**
 - Bait prohibited, only unbaited, single-hook, artificial lures may be used year-round.
 - Rainbow trout: Catch-and-release fishing only. All rainbow trout caught must be released immediately.

KOKTULI RIVER DRAINAGE:

- Open to sport fishing year-round for species other than king salmon.
- **May 1-July 24:** Open to king salmon fishing.
- Only unbaited, single-hook, artificial lures or flies may be used year-round.

KOKWOK RIVER - including waters of the Nushagak River within ¼ mile of its confluence with the Kokwok River:

- Open to sport fishing year-round for species other than king salmon.
- **Closed year-round to king salmon fishing.**

MULCHATNA RIVER DRAINAGE - from ADF&G markers about 1½ miles downstream from the Stuyahok River outlet, upstream to markers about 1½ miles upstream from the Koptuli River outlet:

- Open to sport fishing year-round for species other than king salmon.
- **May 1-July 24:** Open to king salmon fishing.
- Only unbaited, single-hook, artificial lures or flies may be used year-round.

NUYAKUK RIVER - from the outlet of Tikchik Lake to an island located about 2 miles downstream from Nuyakuk Falls:

- Open to sport fishing year-round for species other than king salmon.
- **May 1-July 24:** Open to king salmon fishing.
- Only unbaited, single-hook, artificial lures or flies may be used year-round.

STUYAHOK RIVER DRAINAGE:

- Open to sport fishing year-round for species other than king salmon.
- **May 1-July 24:** Open to king salmon fishing.
- Only unbaited, single-hook, artificial lures or flies may be used year-round.

TIKCHIK RIVER DRAINAGE:

- Open to sport fishing year-round for species other than king salmon.
- **May 1-July 24:** Open to king salmon fishing.
- Only unbaited, single-hook, artificial lures or flies may be used year-round.

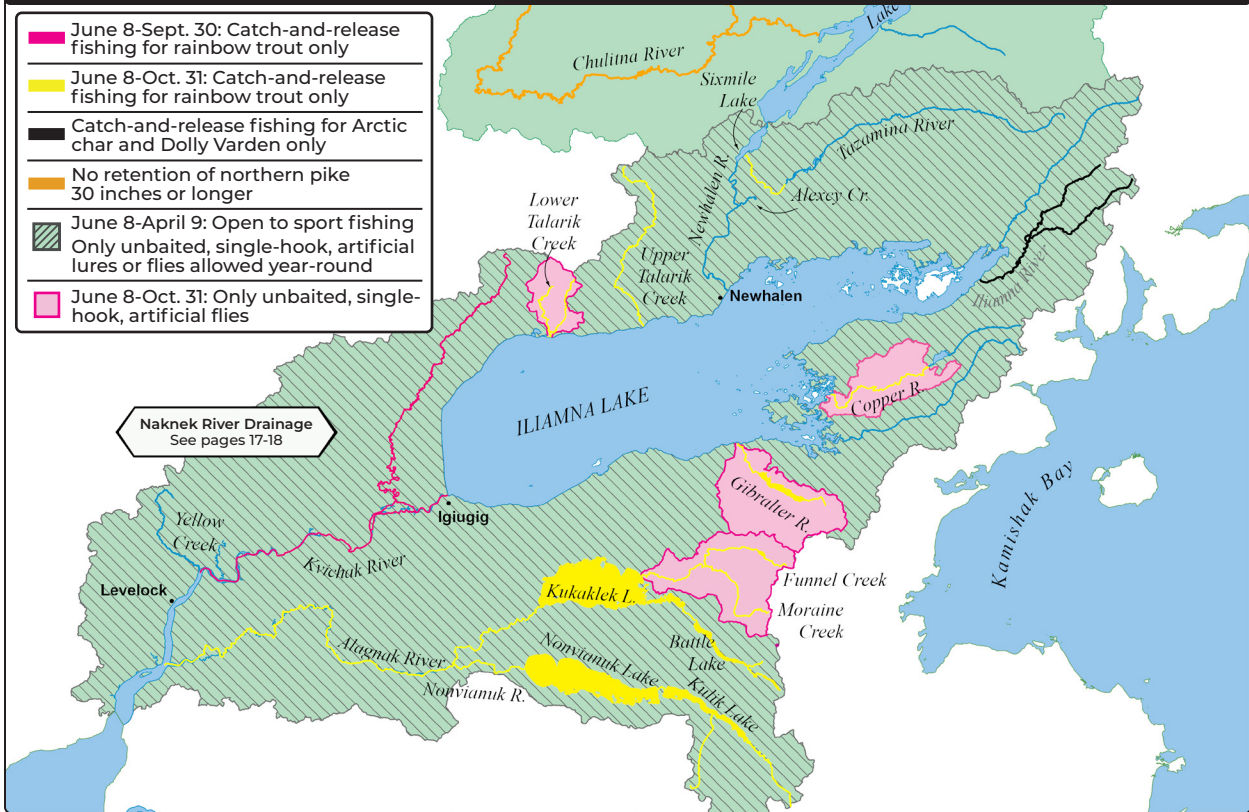
...continued



Beautiful coho salmon from the Nushagak River.

ALAGNAK/KVICHAK RIVER DRAINAGE

- June 8-Sept. 30: Catch-and-release fishing for rainbow trout only
- June 8-Oct. 31: Catch-and-release fishing for rainbow trout only
- Catch-and-release fishing for Arctic char and Dolly Varden only
- No retention of northern pike 30 inches or longer
- June 8-April 9: Open to sport fishing
Only unbaited, single-hook, artificial lures or flies allowed year-round
- June 8-Oct. 31: Only unbaited, single-hook, artificial flies



The Kvichak In-river Sockeye Salmon Management Plan may require inseason adjustments to the regulations by emergency orders for bag limits and waters open to fishing, depending on escapement levels of sockeye salmon. Please see page 3 for more information on how to check for emergency orders in the area you are fishing.

SPECIAL REGULATIONS - BRISTOL BAY ALAGNAK RIVER DRAINAGE

ALAGNAK RIVER DRAINAGE (Unless further restricted below. See map above):

Use of helicopters for transporting anglers and sport-caught fish is prohibited.

- Salmon (all species other than king salmon):
 - 5 per day, 5 in possession, only 3 per day, 3 in possession may be coho salmon.
- King salmon: See general regulations and limits on page 10.
- Rainbow trout:
 - **June 8-October 31:** Catch-and-release fishing only. All rainbow trout caught must be released immediately.
 - **November 1-April 9:** 5 per day, 5 in possession, must be less than 18 inches long.
- **Alagnak River Drainage - all flowing waters of the Alagnak River drainage, including lake waters within ½ mile of all inlet and outlet streams:**
 - **June 8-April 9:** Open to sport fishing.
 - Only unbaited, single-hook, artificial lures or flies may be used.

MORaine CREEK DRAINAGE (all flowing waters):

- **June 8-April 9:** Open to sport fishing.
- **June 8-October 31:** Only unbaited, single-hook, artificial flies may be used.

SPECIAL REGULATIONS - BRISTOL BAY KVICHAK RIVER DRAINAGE

CHULITNA RIVER DRAINAGE - including waters of Lake Clark within 1 mile of the Chulitna River:

- Open to sport fishing year-round.
- Northern pike:
 - Less than 30 inches: 5 per day, 5 in possession.
 - 30 inches or longer: No retention of northern pike is allowed. All northern pike 30 inches or longer caught must be immediately released.

COPPER RIVER DRAINAGE - including all flowing waters downstream from Lower Copper Lake and the waters of Lake Iliamna within ½ mile of the Copper River mouth:

- **June 8-April 9:** Open to sport fishing.
- **June 8-October 31:** Bait prohibited. Only unbaited, single-hook, artificial flies may be used.
- **June 8-October 31:** Catch-and-release fishing for rainbow trout only. All rainbow trout caught must be released immediately.

...continued

**GET THE LATEST FISHING INFO EMAILED TO YOU.
SIGN UP ONLINE AT WWW.WEFISHAK.ALASKA.GOV**

FISHING REPORTS 🐟 ADVISORY ANNOUNCEMENTS 🐟 EMERGENCY ORDERS

GIBRALTAR RIVER DRAINAGE - including all flowing waters and the waters of Lake Iliamna within ½ mile of the Gibraltar River mouth:

- **June 8-April 9:** Open to sport fishing.
- **June 8-October 31:** Bait prohibited. Only unbaited, single-hook, artificial flies may be used.
- **June 8-October 31:** Catch-and-release fishing for rainbow trout only. All rainbow trout caught must be released immediately.

ILIAMNA LAKE and all its tributaries, including the Newhalen River and tributaries, upstream to the outlet of Lake Clark:

- Open to sport fishing year-round, **except in lake waters within a ½ mile radius from inlet or outlet streams.**
- Only unbaited, single-hook, artificial lures or flies may be used year-round, **except in waters of lakes more than a ½ mile radius from inlet or outlet streams.**
- **All flowing waters, and lake waters within a ½ mile radius of inlet or outlet streams:**
 - **April 10-June 7: Closed to sport fishing.**
- **In lake waters more than ½ mile distant from inlet or outlet streams:**
 - General regulations and limits apply.
- **In all waters except those of lakes more than a ½ mile radius from inlet or outlet streams:**
 - Rainbow trout:
 - **June 8-October 31:** 1 per day, 1 in possession, no size limit.
 - **November 1-April 9:** 5 per day, 5 in possession, only 1 of which may be 20 inches or longer.

ILIAMNA RIVER DRAINAGE:

- **June 8-April 9:** Open to sport fishing.
- Arctic char and Dolly Varden: Catch-and-release fishing for Arctic char and Dolly Varden only. All Arctic char and Dolly Varden caught must be released immediately.

KVICHAK RIVER DRAINAGE:

Use of helicopters for transporting anglers and sport-caught fish is prohibited in the Kvichak River drainage.

- Salmon (other than king salmon), **excluding the Alagnak River drainage:**
 - 5 per day, 5 in possession; only 2 per day, 2 in possession may be coho salmon.
- **Kvichak River upstream from its outlet in Kvichak Bay to Iliamna Lake:**
 - **April 10-June 7: Closed to sport fishing.**
 - Only unbaited, single-hook, artificial lures or flies may be used year-round, **except in lake waters more than a ½ mile radius from inlet or outlet streams.**
- **Kvichak River from Kvichak Bay upstream to an ADF&G marker at the confluence of Yellow Creek:**
 - Rainbow trout:
 - **June 8-October 31:** 1 per day, 1 in possession, no size limit.
 - **November 1-April 9:** 5 per day, 5 in possession, only 1 of which may be 20 inches or longer.

Kvichak River Drainage continued...

- **From an ADF&G regulatory marker at the confluence of Yellow Creek upstream to the waters of Iliamna Lake within a ½ mile radius of its outlet at Igiugig:**
 - Rainbow trout:
 - **June 8-September 30:** Catch-and-release fishing only. All rainbow trout caught must be released immediately.
 - **October 1-October 31:** 1 per day, 1 in possession, no size limit.
 - **November 1-April 9:** 5 per day, 5 in possession, only 1 of which may be 20 inches or longer.

LOWER TALARIK CREEK - including waters of Lake Iliamna within ½ mile of the Lower Talarik Creek mouth:

- **June 8-October 31:** Bait prohibited. Only unbaited, single-hook, artificial flies may be used.
- **June 8-October 31:** Catch-and-release fishing for rainbow trout only. All rainbow trout caught must be released immediately.

SIXMILE LAKE AND LAKE CLARK:

- **In all tributaries upstream of Sixmile Lake, including Lake Clark:**
 - Open to sport fishing year-round.
 - Rainbow trout:
 - **June 8-October 31:** 1 per day, 1 in possession, no size limit.
 - **November 1-June 7:** 5 per day, 5 in possession, only 1 of which may be 20 inches or longer.

TAZIMINA RIVER - from the falls, downstream to 1 mile upstream of its outlet into Sixmile Lake:

- **June 8-April 9:** Open to sport fishing.
- **June 8-October 31:** Catch-and-release fishing for rainbow trout only. All rainbow trout caught must be released immediately.

UPPER TALARIK CREEK - including waters of Lake Iliamna within ½ mile of the Upper Talarik Creek mouth:

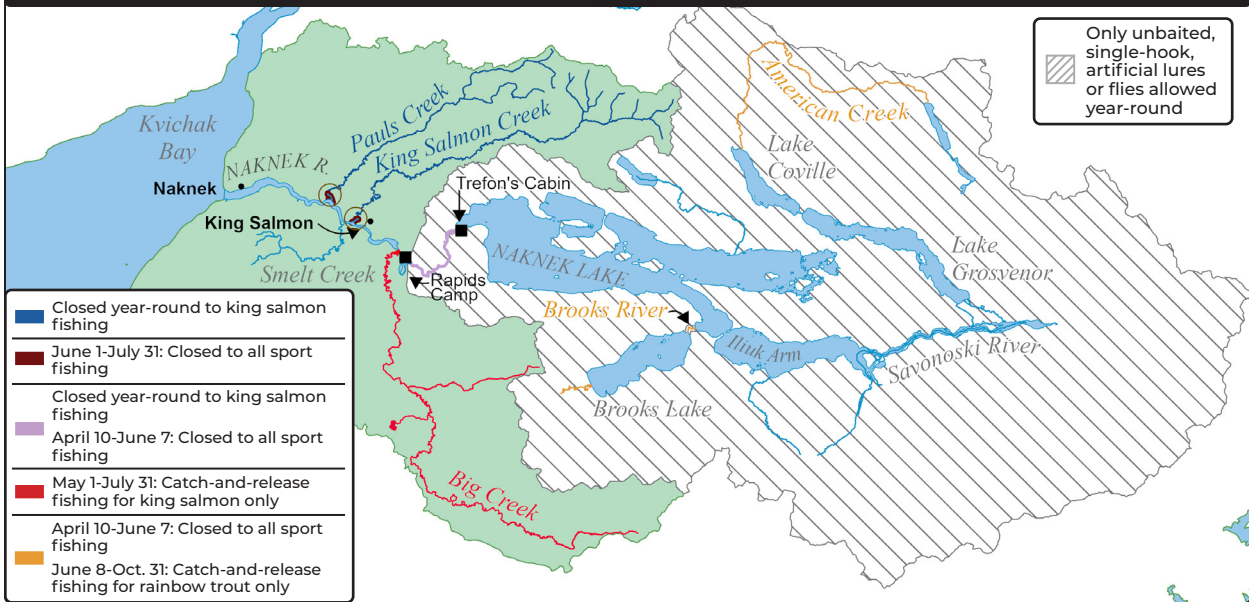
- **June 8-October 31:** Catch-and-release fishing for rainbow trout only. All rainbow trout caught must be released immediately.

...continued



Sockeye salmon in Lake Aleknagik.

NAKNEK RIVER DRAINAGE



SPECIAL REGULATIONS - BRISTOL BAY NAKNEK RIVER DRAINAGE

NAKNEK RIVER DRAINAGE:

- Open to sport fishing year-round.
- In waters of the Naknek River drainage open to king salmon fishing:
 - King salmon:
 - 20 inches or longer: 3 per day, 3 in possession, one 1 may be 28 inches or longer.
 - There is an annual limit of 5 king salmon over 20 inches taken from the entire Naknek River drainage, only 3 of which may be over 28 inches long. All harvested king salmon 20 inches or longer must be recorded. See page 5 for recording instructions.
 - Less than 20 inches: 10 per day, 10 in possession.
- Rainbow trout:
 - **June 8-October 31:** Unless further restricted below, in the Naknek River drainage, 1 per day, 1 in possession, must be less than 18 inches long.
 - **November 1-June 7:** 5 per day, 5 in possession, must be less than 18 inches long.
- In all flowing waters: **March 1-November 14:** Only unbaited, artificial lures or flies may be used.
- In all flowing waters upstream from an ADF&G regulatory marker located ½ mile upstream of Rapids Camp, including all waters within ¼ mile of all lake inlet and outlet streams:
 - Only unbaited, single-hook, artificial lures or flies may be used year-round.
- Upstream from ADF&G markers located ½ mile above Rapids Camp to ADF&G markers at Trefon's cabin at the outlet of Naknek Lake:
 - **Closed year-round to king salmon fishing.**
 - **June 8-April 9:** Open to sport fishing.
 - **March 1-April 9 and June 8-July 31:** Only unbaited, single-hook, artificial lures or flies with a gap between the point and shank of ½ inch or less are allowed. For the remainder of the year, only unbaited, single-hook, artificial lures or flies may be used.

Naknek River Drainage continued...

- **Within a 1/4 mile radius of Big Creek:**
 - **May 1-July 31:** King salmon may be retained. Bag limits and gear restrictions are the same as the remainder of the Naknek River.

NAKNEK RIVER YOUTH-ONLY FISHERY:

- If you are 15 years of age and younger, you may fish for all species in the designated Youth-Only fishery areas. Follow the Naknek River special regulations for king salmon and rainbow trout gear and bag limits, and general regulations for all other species and bag limits.
- A person 16 years or older may not sport fish on the Naknek River in the designated Youth-Only fishery areas on the dates listed below:
 - **Naknek River:**
 - Fishing is allowed on June 7.
 - **Between the ADF&G regulatory markers posted above Rapids Camp:**
 - Fishing is allowed on the second Sunday in July. In 2024, this will be July 14, 2024.
 - **Between the ADF&G regulatory markers posted above and below the mouth of King Salmon Creek including King Salmon Creek:**
 - Fishing is allowed on the second Sunday in August. In 2024, this will be August 11, 2024.

AMERICAN CREEK:

- **June 8-April 9:** Open to sport fishing.
- Rainbow trout:
 - **June 8-October 31:** Catch-and-release fishing only. All rainbow trout caught must be released immediately.
 - **November 1-April 9:** 5 per day, 5 in possession, only 1 of which may be 20 inches or longer.

BIG CREEK - upstream of its confluence with the Naknek River:

- Open to sport fishing year-round for species other than king salmon.
- **May 1-July 31:** Catch-and-release fishing for king salmon only. All king salmon caught must be released immediately.

...continued

Brooks River and Brooks Camp are within the Katmai National Park. Additional National Park regulations may apply to the access and conduct of the fishery. Please call (907) 246-3305 for more information.

BROOKS RIVER DRAINAGE:

- Rainbow trout:
 - **June 8-October 31:** Catch-and-release fishing for rainbow trout only. All rainbow trout caught must be released immediately.
 - **November 1-June 7:** 5 per day, 5 in possession, must be less than 18 inches long. All rainbow trout caught that are 18 inches or longer in length must be immediately released.
- **In all flowing waters of the Brooks River drainage, including lake waters within ¼ mile of all inlet and outlet streams and waters of Naknek Lake within ¼ mile of the outlet of the Brooks River:**
 - **June 8-April 9:** Open to sport fishing.
 - **June 8-October 31:** Only unbaited, single-hook, artificial flies may be used.
- Rainbow trout:
 - **November 1-April 9:** 5 per day, 5 in possession, must be less than 18 inches long.
- **The outlet of Brooks Lake downstream to the bridge at Brooks Camp:**
 - Catch-and-release fishing only. All fish species caught must be released immediately.

KING SALMON CREEK:

- **Downstream from the upstream side of the Alaska Peninsula Highway Bridge:**
 - **August 1-May 31:** Open to sport fishing.
- Rainbow trout:
 - **August 1-October 31:** 1 per day, 1 in possession, must be less than 18 inches long.
 - **November 1-May 31:** 5 per day, 5 in possession, must be less than 18 inches long.
 - **June 1-July 31: Closed to all sport fishing.**
- **Upstream of the Alaska Peninsula Highway Bridge:**
 - Open to sport fishing year-round for species other than king salmon.
 - **Closed year-round to king salmon fishing.**
 - Rainbow trout: 1 per day, 1 in possession, must be less than 18 inches long.

PAUL'S CREEK:

- **Downstream from the upstream side of the Alaska Peninsula Highway Bridge:**
 - **August 1-May 31:** Open to sport fishing.
- Rainbow trout:
 - **August 1-October 31:** 1 per day, 1 in possession, must be less than 18 inches long.
 - **November 1-May 31:** 5 per day, 5 in possession, must be less than 18 inches long.
 - **June 1-July 31: Closed to all sport fishing.**
- **Upstream of the Alaska Peninsula Highway Bridge:**
 - Open to sport fishing year-round for species other than king salmon.
 - **Closed year-round to king salmon fishing.**
 - Rainbow trout: 1 per day, 1 in possession, must be less than 18 inches long.

SAVONOSKI RIVER DRAINAGE - including the waters of Naknek Lake within ¼ mile of the mouth of the Savonoski River, and including Lake Coville and Lake Grosvenor, but excluding American Creek:

- Open to sport fishing year-round.
- Rainbow trout:
 - **June 8-October 31:** 1 per day, 1 in possession, no size limit.
 - **November 1-June 7:** 5 per day, 5 in possession, only 1 of which may be 20 inches or longer.

EGEGIK RIVER DRAINAGE - all waters, including Becharof Lake:

- Open to sport fishing year-round.
- Rainbow trout:
 - **June 8-October 31:** 1 per day, 1 in possession, no size limit.
 - **November 1-June 7:** 5 per day, 5 in possession, only 1 of which may be 20 inches or longer.
- **At Becharof Lake outlet, including the waters of Becharof Lake within ¼ mile of the outlet and the waters of the Egegik River within ¼ mile of the outlet:**
 - Arctic grayling: Catch-and-release fishing only. All Arctic grayling caught must be released immediately.



UGASHIK RIVER DRAINAGE - including Ugashik Lakes:

- Open to sport fishing year-round.
- Rainbow trout:
 - **June 8-October 31:** 1 per day, 1 in possession, no size limit.
 - **November 1-June 7:** 5 per day, 5 in possession, only 1 of which may be 20 inches or longer.
- **In Ugashik Narrows (the waters from the outlet of Upper Ugashik Lake downstream to the inlet of Lower Ugashik Lake, including those waters of Upper and Lower Ugashik Lakes within ¼ mile of the Ugashik Narrows):**
 - Arctic grayling: Catch-and-release fishing only. All Arctic grayling caught must be released immediately.
- **The Ugashik River:**
 - **Closed year-round to Arctic grayling fishing.**
- **In the remainder of the Ugashik drainage, including Ugashik Lakes and all Ugashik tributaries:**
 - Arctic grayling: 2 per day, 2 in possession.