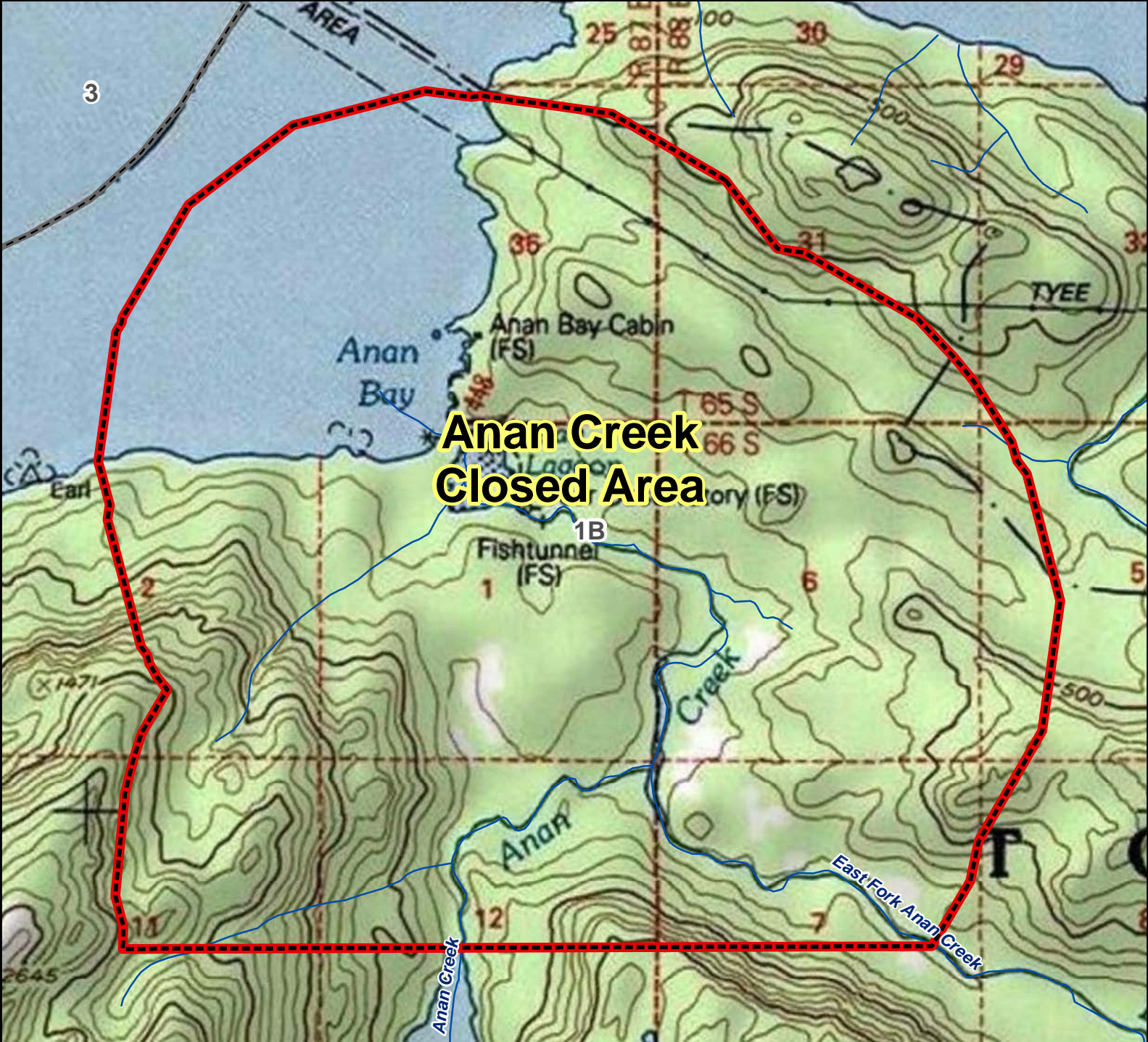


Unit 1B Anan Creek Closed Area



AREA DESCRIPTION: Unit 1B, the Anan Creek drainage within one mile of Anan Creek downstream from the mouth of Anan Lake, including the area within a one mile radius from the mouth of Anan Creek Lagoon.

The area is closed to the taking of black bears and brown bears.

N

0 0.175 0.35 0.7 Miles

- Closed Area
- Subunit Boundary
- Controlled Use Area
- Management Area
- National Park/Monument
- National Wildlife Refuge
- Military Closure
- Other State Areas
- Closed to Hunting