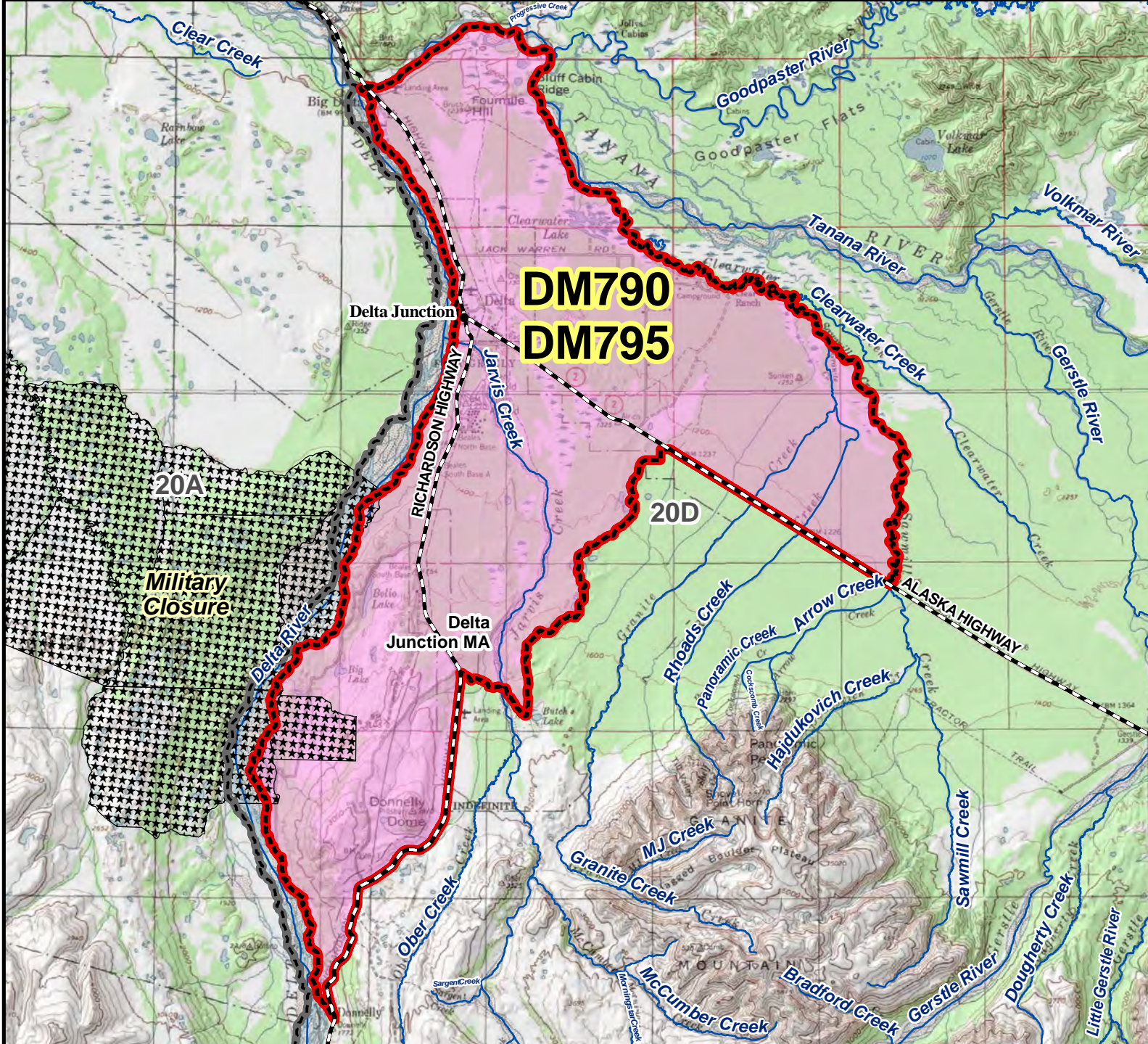


DM790 DM795 Moose Drawing Permit Hunt



AREA DESCRIPTION: Unit 20D, Delta Junction Management Area, bounded by a line beginning at the confluence of Donnelly Creek and the Delta River, then up Donnelly Creek to Richardson Highway (Mile 238), then north along the east side of the highway to the "12-mile crossing trail" (Mile 252.4), then east along the south side of the "12-mile crossing trail" and across Jarvis Creek to the 33-mile loop road, then northeast along the 33-mile loop road to the intersection with the Alaska Highway (Mile 1414), then southeast along the north side of the Alaska Highway to the bridge at Sawmill Creek (Mile 1403.9), then down the west bank of Sawmill Creek to its confluence with Clearwater Creek and down the south bank of Clearwater Creek to its confluence with the Tanana River, then down the Tanana River to its confluence with the Delta River, and upstream along the east bank of the Delta River to the point of beginning at Donnelly Creek.

