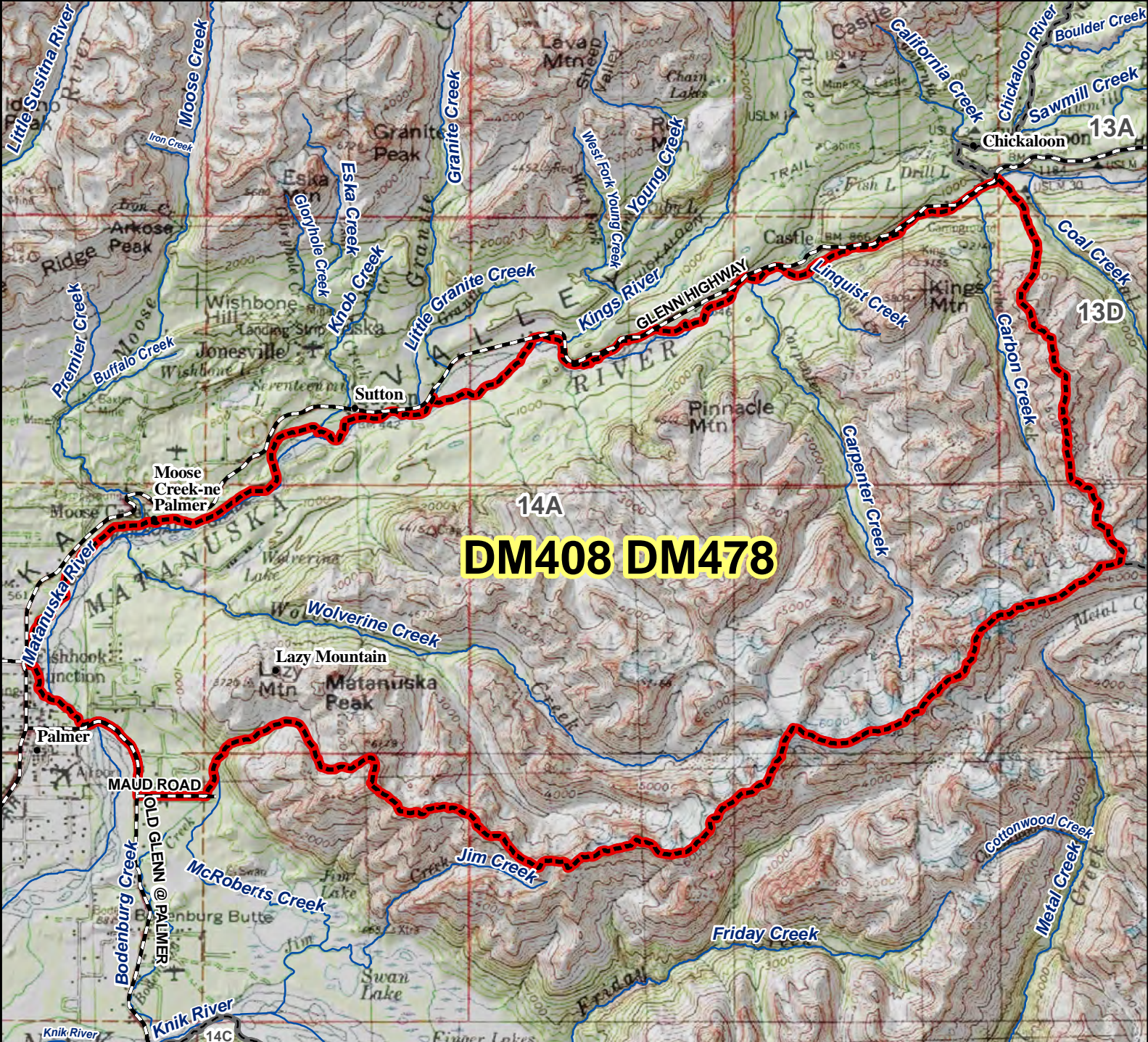


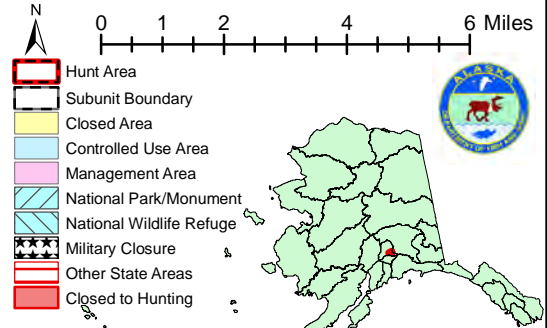
DM408 DM478 Moose Drawing Permit Hunt

This map is intended for hunt planning use, not for determining legal property or regulatory boundaries. Content is compiled from various sources and is subject to change without notice. See current hunting regulations for written descriptions of boundaries. Hunters are responsible for knowing the land ownership and regulations of the areas they intend to hunt.



DM408 DM478

AREA DESCRIPTION: Unit 14A, South Matanuska River, that eastern portion bounded by a line beginning at the confluence of the north bank of the Matanuska River and the Chickaloon River, then along the north bank of the Matanuska River to the Old Glenn Highway bridge, then southeasterly along the Old Glenn Highway to Maud Road, then easterly along Maud Road to McRoberts Creek, then upstream along McRoberts Creek to its headwaters, then east along the drainage divide between the Knik River and Matanuska River drainages to the Unit 14A boundary, then northerly along the boundary to the point of origin.



Please refer to the Alaska Hunting Regulations booklet for bag type, seasons, and additional regulations concerning this hunt.