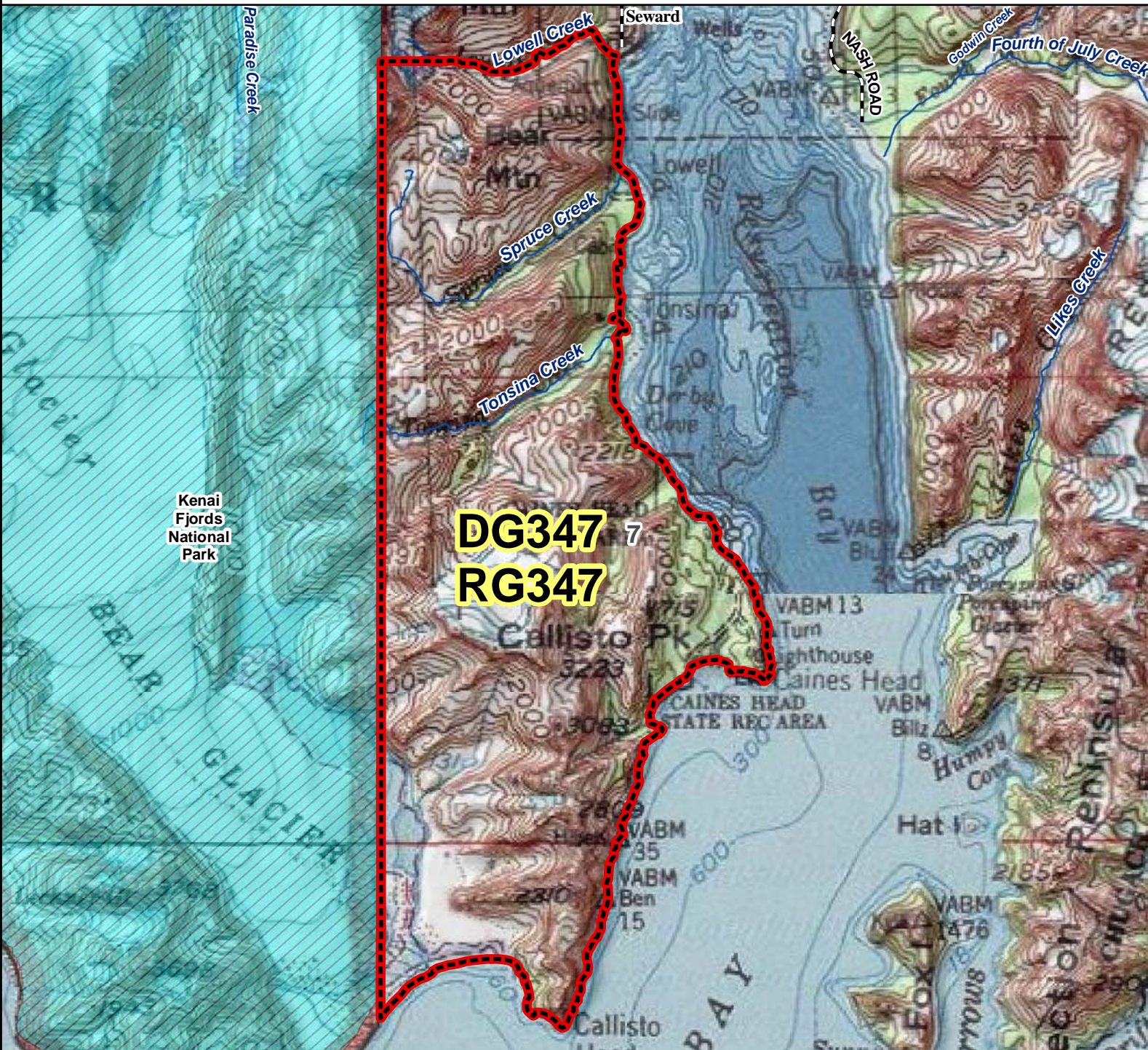


DG347 RG347 Mountain Goat Drawing and Registration Permit Hunt



AREA DESCRIPTION: Unit 7, Seward, beginning at the point where Lowell Creek flows through a man-made aqueduct into Resurrection Bay, then upstream along Lowell Creek to the glacier at its head, then westerly through the center of the glacier to the Kenai Fjords National Park boundary, then south along the Park boundary to Resurrection Bay.

