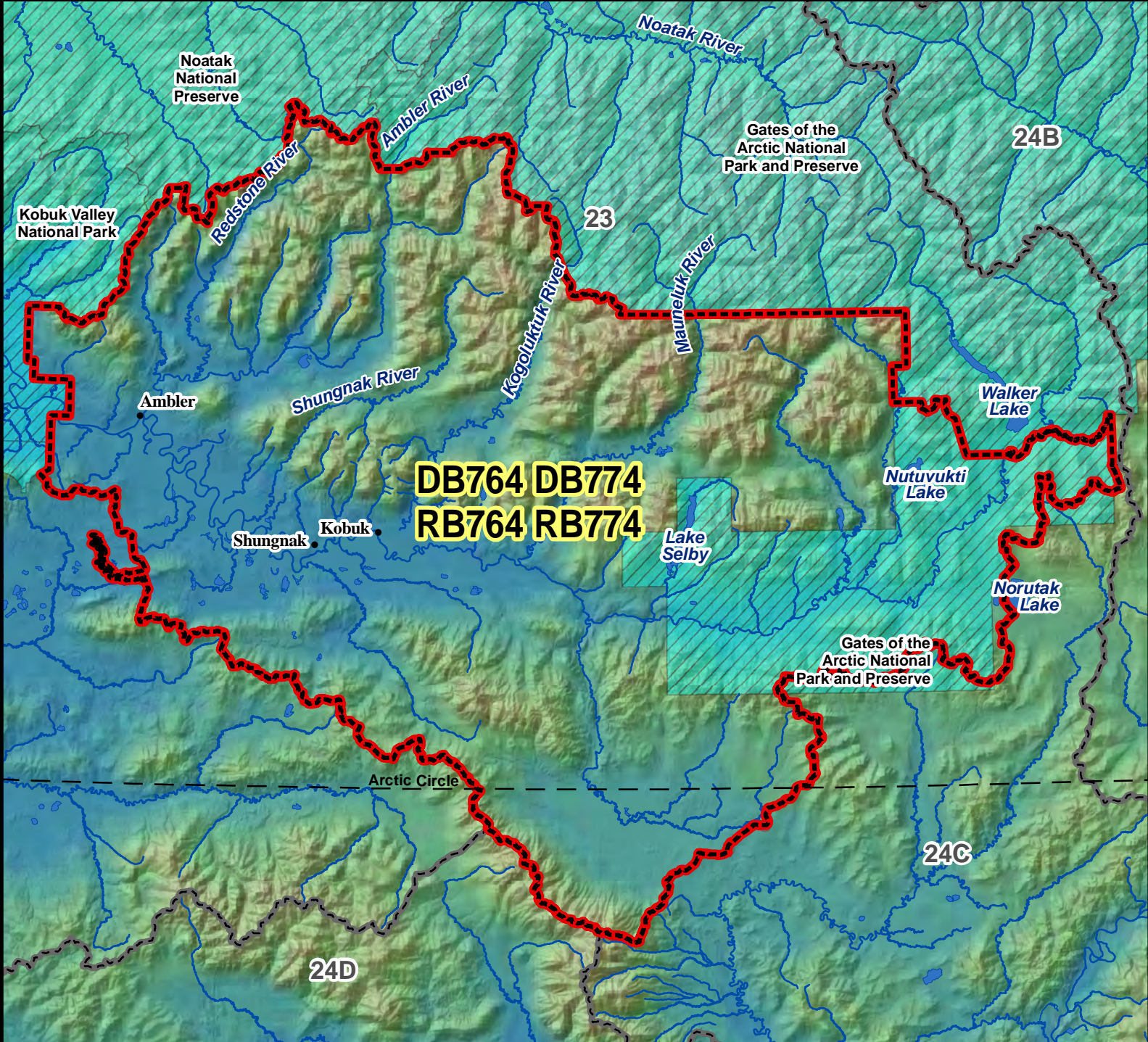


DB764 DB774 RB764 RB774 Brown Bear Drawing & Registration Permit Hunt

This map is intended for hunt planning use, not for determining legal property or regulatory boundaries. Content is compiled from various sources and is subject to change without notice. See current hunting regulations for written descriptions of boundaries. Hunters are responsible for knowing the land ownership and regulations of the areas they intend to hunt.



**DB764 DB774
RB764 RB774**

AREA DESCRIPTION: Unit 23, that portion of the Kobuk River drainage upstream of the Kobuk Valley National Park boundary near Ambler excluding Gates of the Arctic National Park. This area includes Ambler River, Upper Kobuk River, Kogoluktuk River, Mauneluk River, Redstone River, Schwatka Mountains, Shungnak River.

N

0 5 10 20 Miles

- Hunt Area
- Subunit Boundary
- Closed Area
- Controlled Use Area
- Management Area
- National Park/Monument
- National Wildlife Refuge
- Military Closure
- Other State Areas
- Closed to Hunting