

Pick the European green crab (CAMA)

A.



B.



European green crab (CAMA)



© Jeff Adams

A.

Purple shore crab (HENU)



© Emily Grason

B.

Correct Answer: A



Two main features distinguish the European green crab (CAMA) from the purple shore crab (HENU) .

1. The green crab has 5, forward-pointing marginal teeth while the purple shore crab only has 3, more rounded marginal teeth.
2. The green crab has 3 rostral bumps between its eyes while the rostrum of the purple shore crab has 2, but appears almost completely flat.



Pick the European green crab (CAMA)

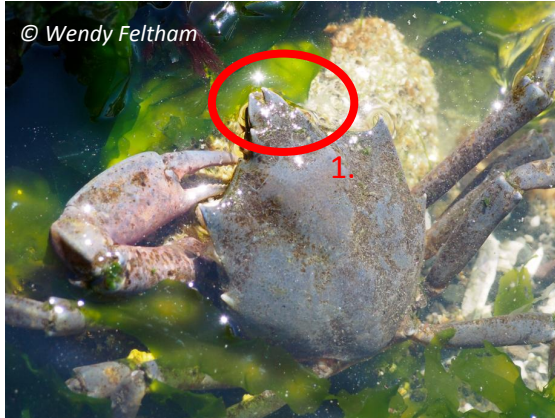
A.



B.



Spider crab (SPID)



A.



European green crab (CAMA)



B.



Correct Answer: B

Two main features distinguish the European green crab (CAMA) from the spider crab (SPID).

1. Though variable depending on species, spider crabs rostrums are extremely pronounced, projecting far beyond the eyes, compared to the 3 small rostral bumps of the European green crab.
2. The carapace of the spider crab is longer (front to back) than it is wide, while the European green crab is a pentagon shape- wider than it is long.

Pick the European green crab (CAMA)

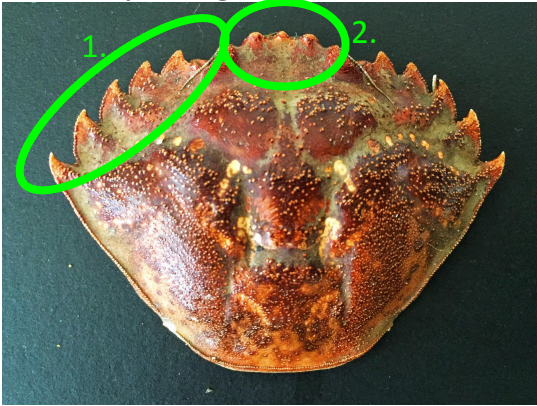
A.



B.



European green crab (CAMA)



A.



Hairy shore crab (HEOR)



B.



Correct Answer: A

Two main features distinguish the European green crab (CAMA) from the hairy shore crab (HEOR).

1. The European green crab has 5 marginal teeth compared to the 3 marginal teeth of the hairy shore crab.
2. The European green crab has 3 rostral bumps compared to the hairy shore crab's 2 rostral bumps.

Pick the European green crab (CAMA)

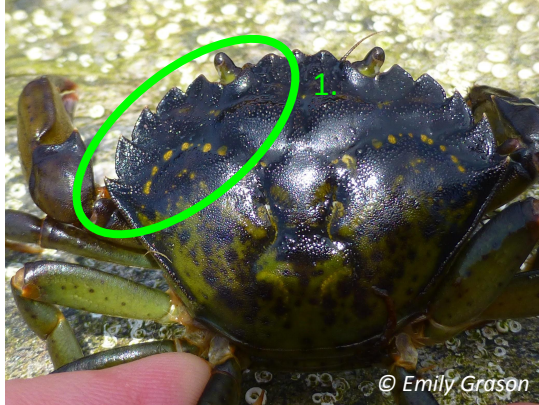
A.



B.



European green crab (CAMA)



A.



Correct Answer: A

Three main features distinguish the European green crab (CAMA) from the hairy helmet crab (TECH).

1. The European green crab has 5 marginal teeth, and is widest at the last tooth, while the hairy helmet crab has 6 and is not widest at the last tooth.
2. The carapace of the hairy helmet crab is diamond shape compared to the pentagon-shaped carapace of the green crab.
3. The hairy helmet crab is covered with bristles and bumps, even on the carapace. Green crab have some fine hairs on their legs, but a smooth carapace and shell overall.

Hairy helmet crab (TECH)



B.



Pick the European green crab (CAMA)

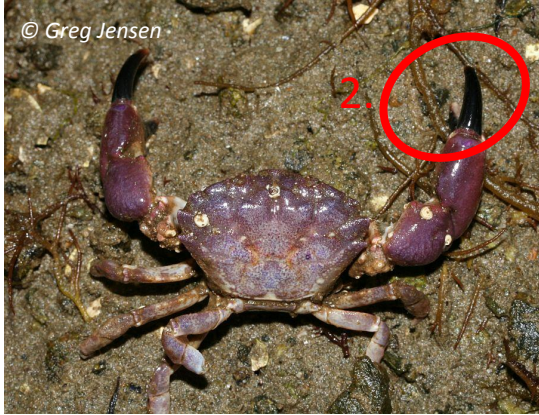
A.



B.



Black-clawed crab (LOBE)



A.



Correct Answer: B

Two main features distinguish the European green crab (CAMA) from the black-clawed crab (LOBE).

1. The European green crab has well-defined marginal teeth compared to the relatively indistinct marginal teeth of the black-clawed crab.
2. The black-clawed crab has 'beefy' black-tipped claws, the European green crab has comparatively slender claws, and the tips might be dark, but are not as black.

European green crab (CAMA)



B.



Pick the European green crab (CAMA)

A.



B.



Dungeness crab (MEMA)



A.



European green crab (CAMA)



B.



Correct Answer: B

The main feature distinguishing the European green crab (CAMA) from the Dungeness crab (MEMA) is the difference in the number of marginal teeth.

1. The European green crab has 5 marginal teeth while the Dungeness crab has 10.
2. Dungeness crab have a relatively wider shell than European green crab, when compared to the length (front to back)

Pick the European green crab (CAMA)

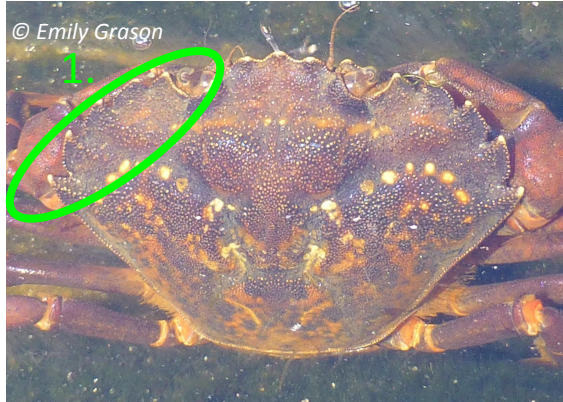
A.



B.



European green crab (CAMA)



A.



Correct Answer: A

The main feature distinguishing the European green crab (CAMA) from the graceful crab (MEGR) is the difference in the marginal teeth.

1. The European green crab has 5 distinct, forward-facing marginal teeth while the graceful crab has 10, more rounded marginal teeth.

Graceful crab (MEGR)



B.



Pick the European green crab (CAMA)

A.



B.



Red rock crab (CAPR)



A.



Correct Answer: B

There are a few main features distinguishing the European green crab (CAMA) from the red rock crab (CAPR).

1. The European green crab has 5 distinct, forward-facing marginal teeth while the graceful crab has 10, more rounded marginal teeth.
2. The red rock crab has beefy, black-tipped claws while the European green crab has relatively slender claws, which might have dark tips, but not black.
3. The carapace of the red rock crab is fan-shaped (very wide relative to front to back length) while the European green crab is pentagon shaped.

European green crab (CAMA)



B.



Pick the European green crab (CAMA)

A.



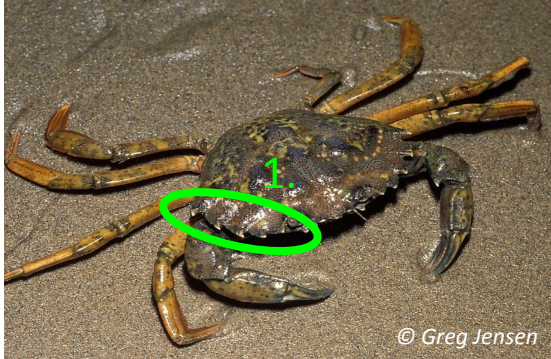
© Greg Jensen

B.



© Wendy Feltham

European green crab (CAMA)



A.



There are a few main features distinguishing the European green crab (CAMA) from the pygmy rock crab (GLOR).

1. The European green crab has 5 large, distinct marginal teeth while the pygmy rock crab has many small marginal teeth.

2. The carapace shape of the pygmy rock crab is oval or nearly circular while the European green crab is a pentagon.

3. While not visible on this image, the pygmy rock crab, like the red rock crab, has beefy black-tipped claws, while the green crab has relatively slender claws, which might have dark tips, but not black.

Pygmy rock crab (GLOR)



B.

