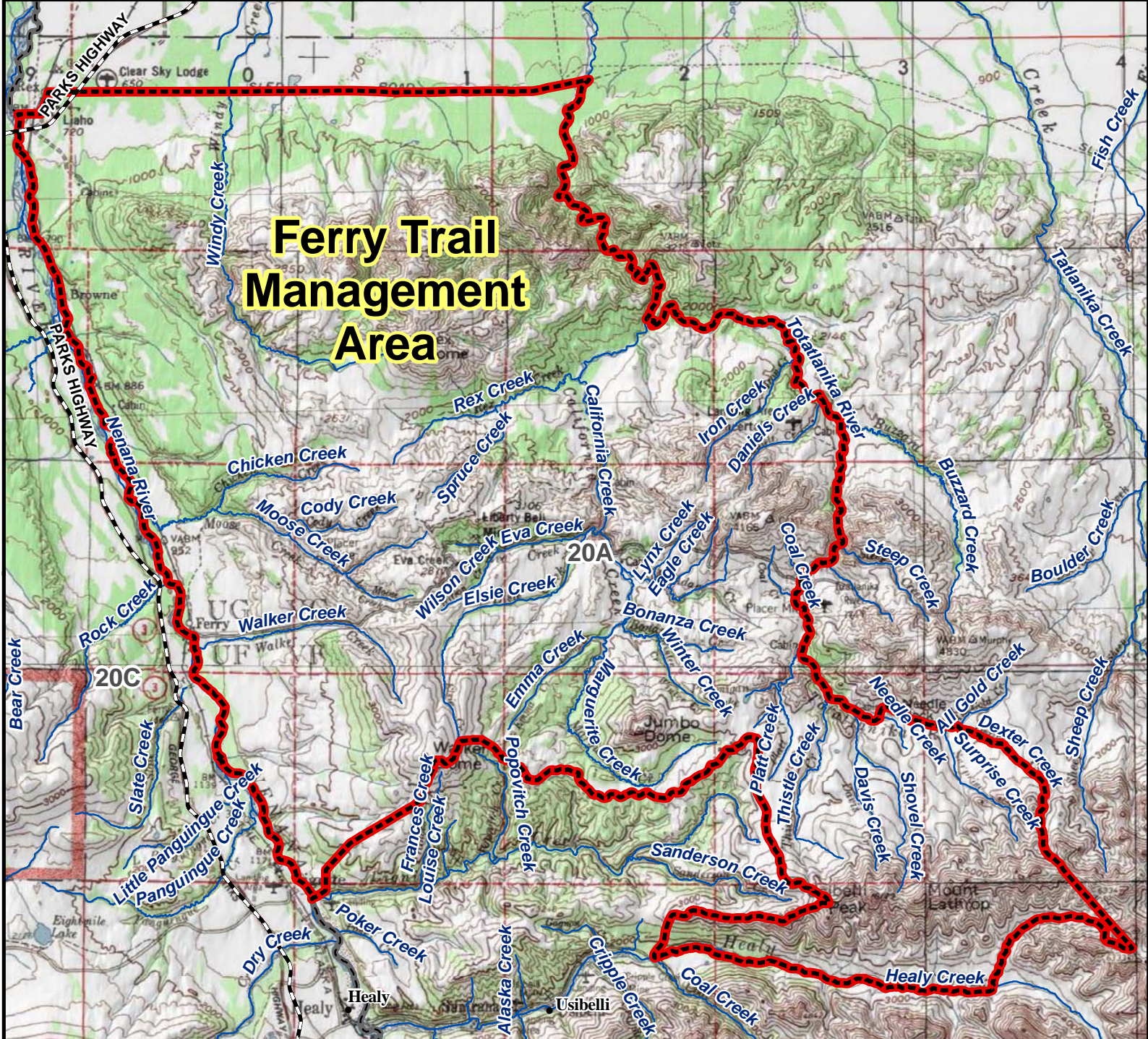


Unit 20A Ferry Trail Management Area



**Ferry Trail
Management
Area**

AREA DESCRIPTION: Unit 20A, the area consists of that portion of Unit 20A bounded on the north by the Rex Trail; bounded on the west by the east bank of the Nenana River from its intersection with the Rex Trail south to the divide forming the north boundary of the Lignite Creek drainage; bounded on the south by that divide easterly and southerly to the headwaters of Sanderson Creek at Usibelli Peak, then along a southwesterly line to the confluence of Healy Creek and Coal Creek, then upstream easterly along the south bank of Healy Creek to the north fork of Healy Creek, then along the north fork of Healy Creek to its headwaters; bounded on the east by a straight line from the headwaters of the north fork of Healy Creek to the headwaters of Dexter Creek, then along the east bank of Dexter Creek to the Totatlanika River, then down the east bank of Totatlanika River to the Rex Trail.

The area is open to caribou hunting by permit only.

N

0 1.75 3.5 7 Miles

- Management Area
- Subunit Boundary
- Closed Area
- Controlled Use Area
- National Park/Monument
- National Wildlife Refuge
- Military Closure
- Other State Areas
- Closed to Hunting