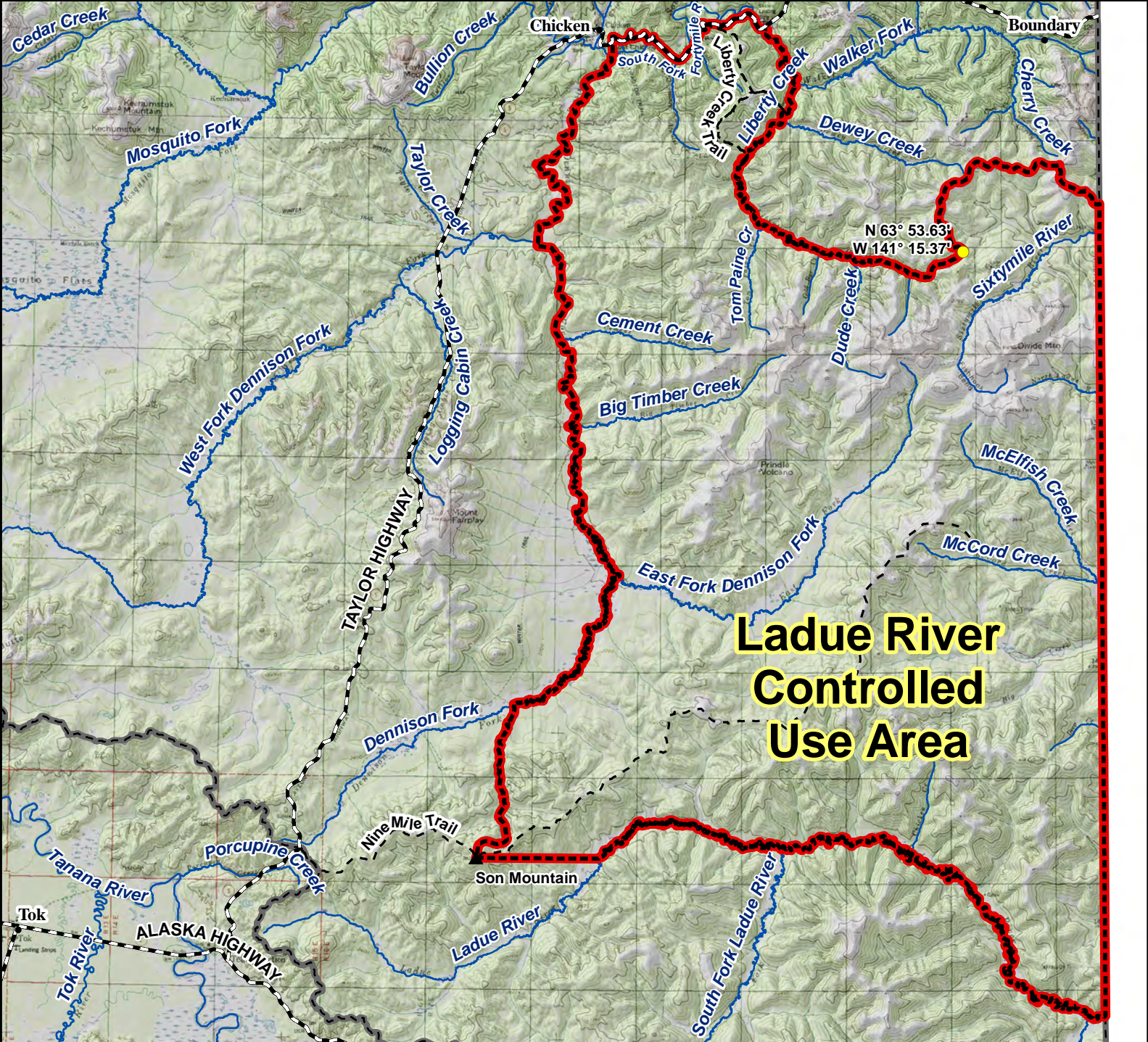


# Unit 20E Ladue River Controlled Use Area

This map is intended for hunt planning use, not for determining legal property or regulatory boundaries. Content is compiled from various sources and is subject to change without notice. See current hunting regulations for written descriptions of boundaries. Hunters are responsible for knowing the land ownership and regulations of the areas they intend to hunt.



**Ladue River  
Controlled  
Use Area**

**AREA DESCRIPTION:** Unit 20E, the area consists of that portion of Unit 20E bounded on the west by the east bank of the Dennison Fork of the Fortymile River from its confluence with the South Fork of the Fortymile River upstream to the confluence with the unnamed creek that drains north from Son Mountain, then south along the east bank of that unnamed creek to the top of Son Mountain; bounded on the south by a straight line east from the top of Son Mountain to the north bank of the Ladue River, then along the north bank of the Ladue River to the Alaska-Canada border; bounded on the east by the Alaska-Canada border; and bounded on the north by the intersection of the Alaska-Canada border with the divide defining the northern edge of the Sixtymile River drainage, then westerly along this divide to the unnamed tributary of Liberty Creek at 63° 53.630' N. lat., 141° 15.370' W. long., then downstream along the south bank of the unnamed tributary of Liberty Creek to its confluence with Liberty Creek, then downstream along the south bank of Liberty Creek to the confluence with the Walker Fork of the Fortymile River, then downstream along the west bank of the Walker Fork of the Fortymile river to the Taylor Highway, then westerly along the Taylor Highway to the Taylor Highway bridge over the South Fork of the Fortymile River, then upstream along the east bank of the South Fork of the Fortymile River to the confluence with the Dennison Fork of the Fortymile River.

The area is closed to the use of any motorized land vehicle for hunting, including the transportation of hunters, their hunting gear, or parts of game, from August 24 through September 20; however, this provision does not prohibit motorized access, or transportation of game, on the Nine Mile and Liberty Creek trails, the Alaska-Canada border, or the Boundary Cutoff of the Taylor Highway, or the transportation into the area of game meat that has been processed for human consumption.

N

0 5 10 15 Miles

- Controlled Use Area
- Subunit Boundary
- Closed Area
- Management Area
- National Park/Monument
- National Wildlife Refuge
- Military Closure
- Other State Areas
- Closed to Hunting