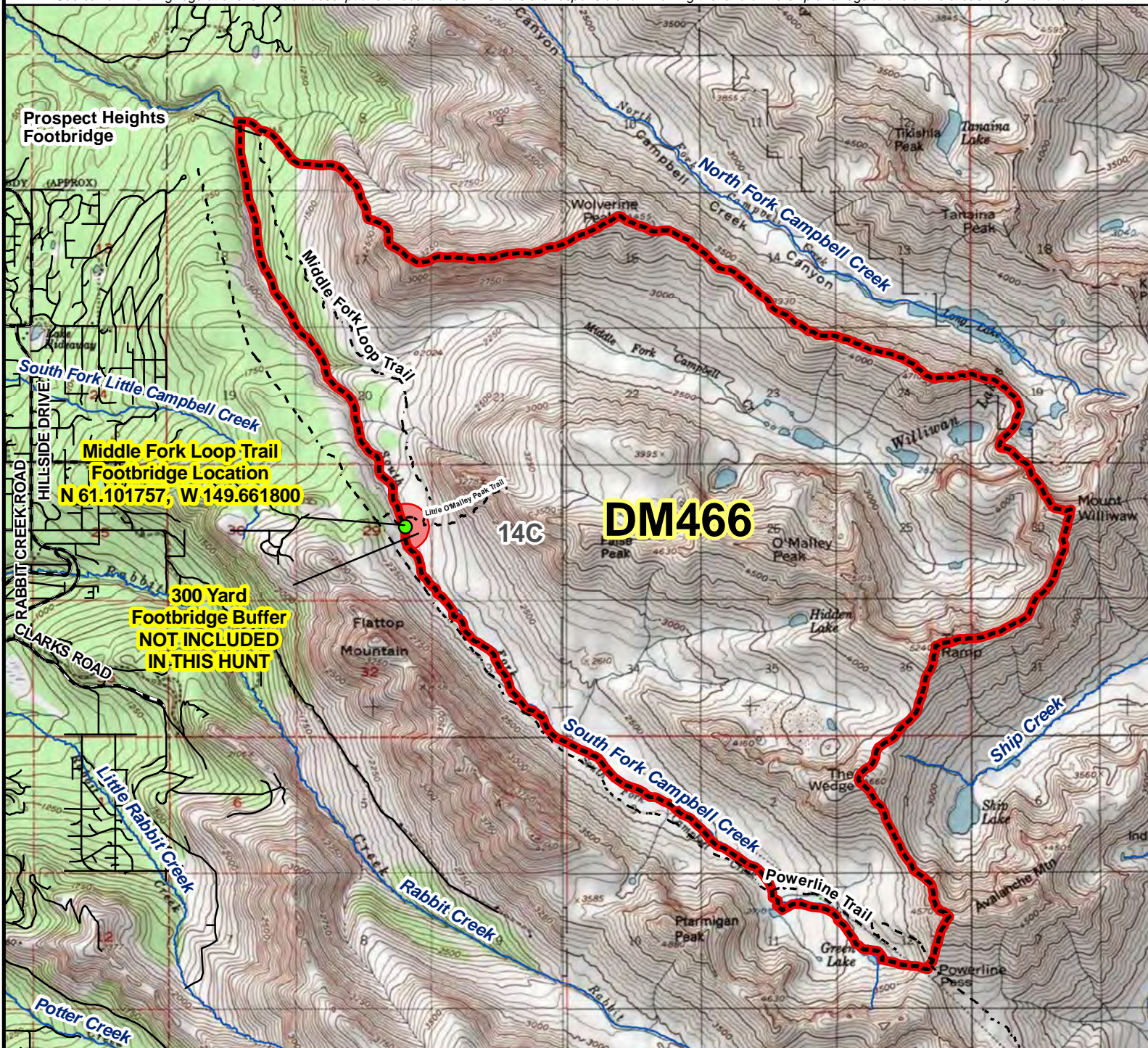
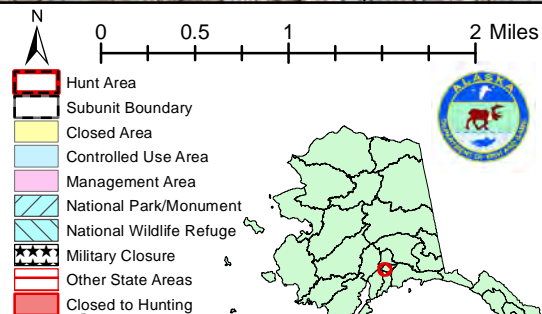


DM466 Moose Drawing Permit Hunt

This map is intended for hunt planning use, not for determining legal property or regulatory boundaries. Content is compiled from various sources and is subject to change without notice. See current hunting regulations for written descriptions of boundaries. Hunters are responsible for knowing the land ownership and regulations of the areas they intend to hunt.



AREA DESCRIPTION: Unit 14C, all drainages flowing west into Campbell Creek upstream from the Prospects Heights footbridge. The boundary runs from the Prospect Heights footbridge upstream along the north bank of South Fork Campbell Creek to Gray Lake, then to Green Lake and continuing to Powerline Pass. From Powerline Pass the boundary follows the ridgeline to The Wedge, The Ramp, Mount Williwaw, Mount Elliot, Wolverine Peak, Rusty Point and back to the footbridge.



Please refer to the Alaska Hunting Regulations booklet for bag type, seasons, and additional regulations concerning this hunt.