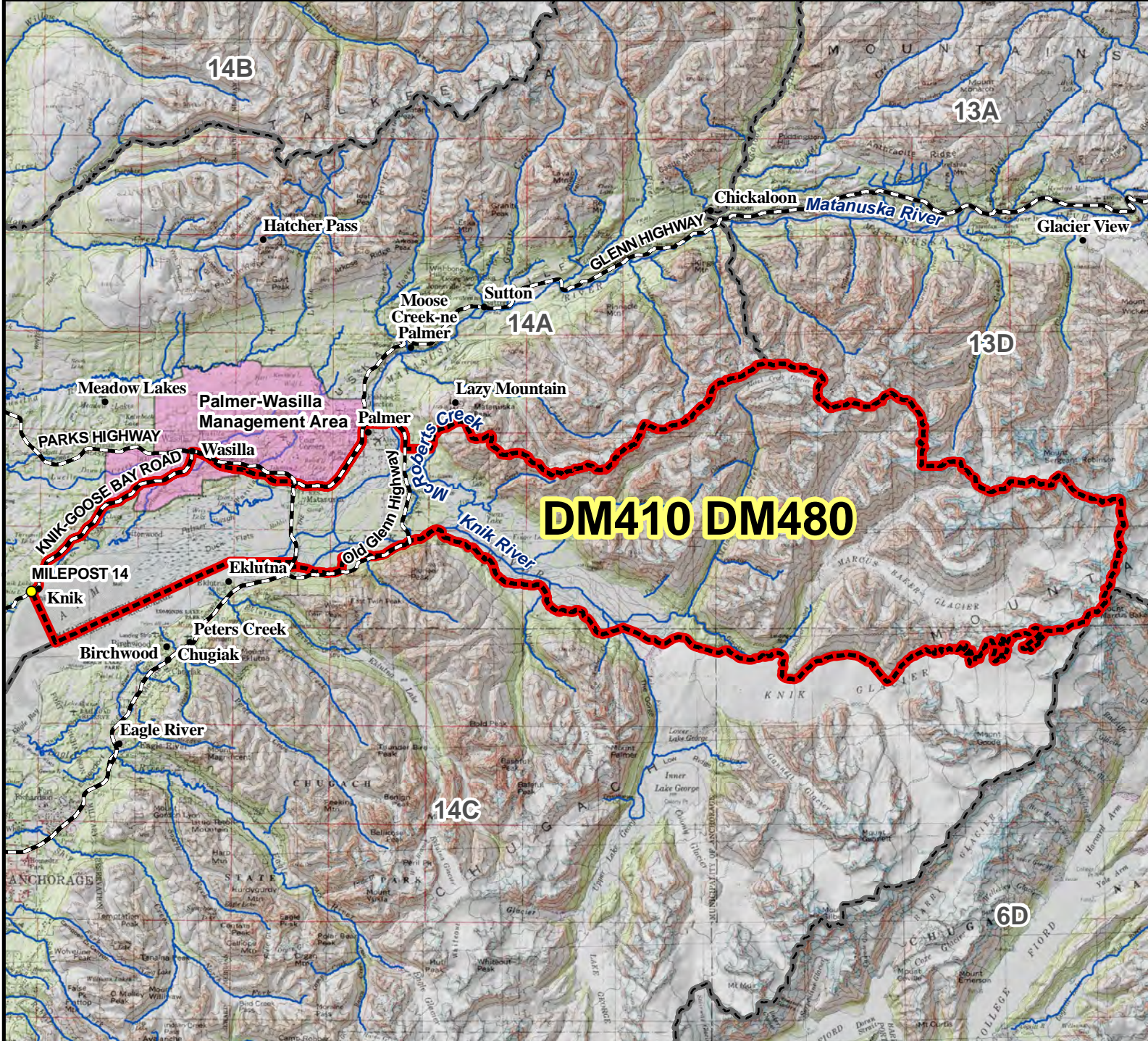


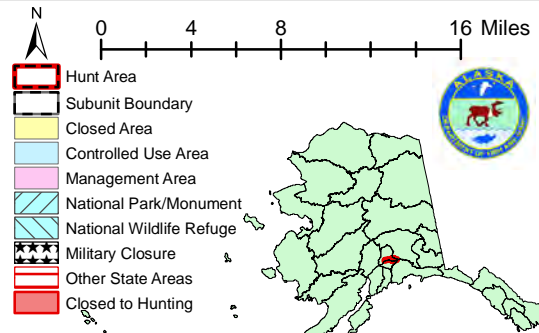
DM410 DM480 Moose Drawing Permit Hunt

This map is intended for hunt planning use, not for determining legal property or regulatory boundaries. Content is compiled from various sources and is subject to change without notice. See current hunting regulations for written descriptions of boundaries. Hunters are responsible for knowing the land ownership and regulations of the areas they intend to hunt.



DM410 DM480

AREA DESCRIPTION: Unit 14A, Knik River, that southeastern portion of Subunit 14A bounded on the west by a line running south from Mile 14 Knik-Goose Bay Road to the tide-line, and by the Knik-Goose Bay Road from Mile 14 to Mile 0, and bounded on the north by the Parks Highway from Knik-Goose Bay Road to the Glenn Highway, and by the Glenn Highway to the Old Glenn Highway (Arctic Ave.) at Palmer, and bounded on the north and east by the Old Glenn east and south to Maud Road and by a line going east along Maud Road to McRoberts Creek, then east along McRoberts Creek to its headwaters, then east along the drainage divide between the Knik River and Matanuska River to the Subunit boundary, and along the Subunit boundary to the point of origin.



Please refer to the Alaska Hunting Regulations booklet for bag type, seasons, and additional regulations concerning this hunt.