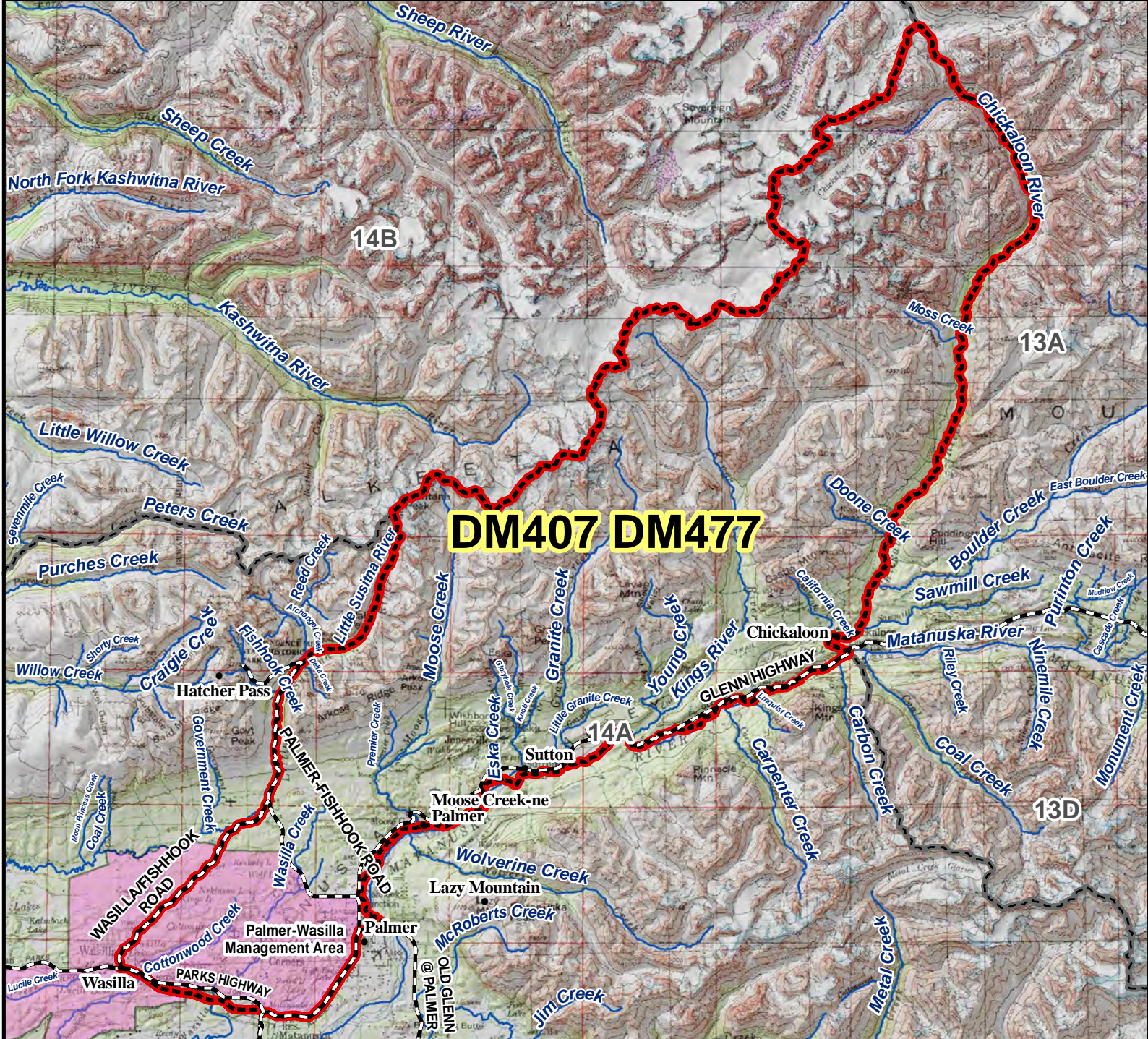
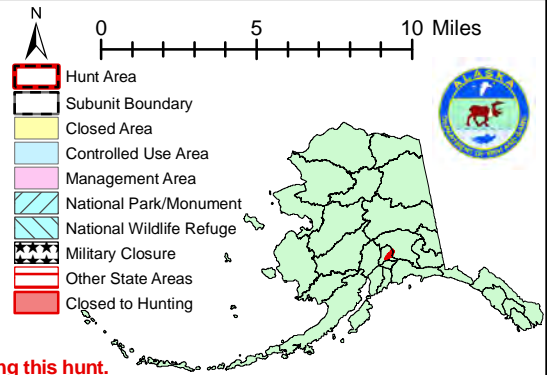


DM407 DM477 Moose Drawing Permit Hunt

This map is intended for hunt planning use, not for determining legal property or regulatory boundaries. Content is compiled from various sources and is subject to change without notice. See current hunting regulations for written descriptions of boundaries. Hunters are responsible for knowing the land ownership and regulations of the areas they intend to hunt.



AREA DESCRIPTION: Unit 14A, North Matanuska River, that northeastern portion bounded by a line beginning at the intersection of the Wasilla Fishhook Road and Parks Highway; then along Wasilla Fishhook Road to Palmer Fishhook Road then north to the first bridge crossing the Little Susitna River, then upstream along Little Susitna River to Mint Glacier, then along Mint Glacier to the Unit 14A boundary; then along the Unit 14A boundary to the headwaters of the Chickaloon River, downstream along the Chickaloon River to its confluence with the Matanuska River, then along the north bank of the Matanuska River to the Old Glenn Highway, west on the Old Glenn Highway to the Glenn Highway, south on the Glenn Highway to the Parks Highway and west on the Parks Highway to the point of origin.



Please refer to the Alaska Hunting Regulations booklet for bag type, seasons, and additional regulations concerning this hunt.