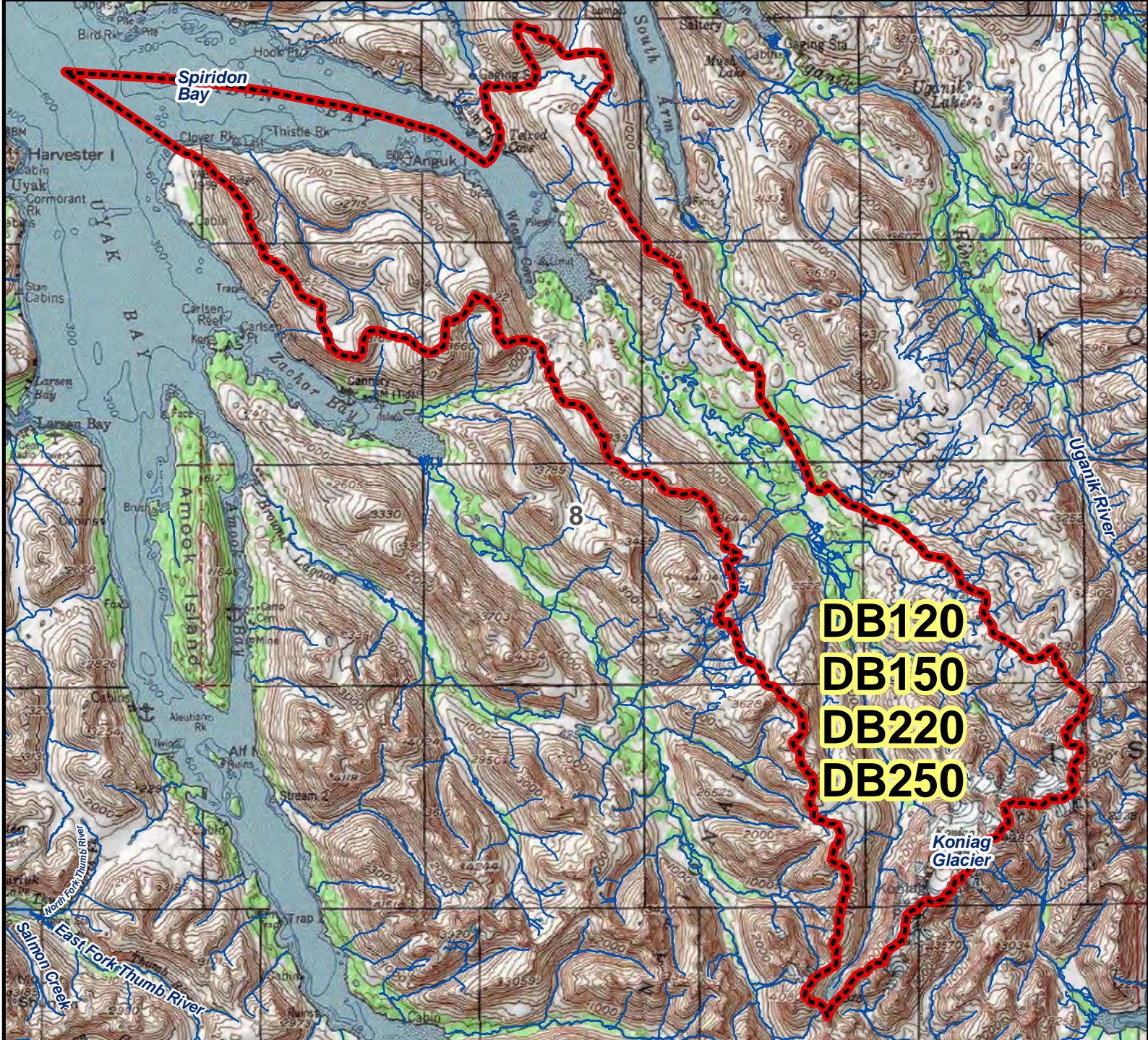


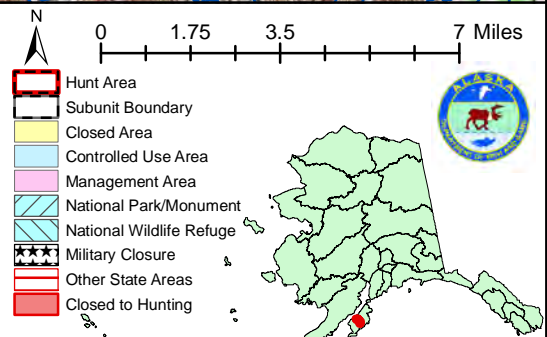
DB120 DB150 DB220 DB250 Brown Bear Drawing Permit Hunt

This map is intended for hunt planning use, not for determining legal property or regulatory boundaries. Content is compiled from various sources and is subject to change without notice. See current hunting regulations for written descriptions of boundaries. Hunters are responsible for knowing the land ownership and regulations of the areas they intend to hunt.



DB120
DB150
DB220
DB250

AREA DESCRIPTION: Unit 8, South Spiridon Bay, Western Kodiak Island, including South Spiridon Bay, and the Spiridon River valley up to Koniag Glacier.



Please refer to the Alaska Hunting Regulations booklet for bag type, seasons, and additional regulations concerning this hunt.