

Aquatic Farm and Hatchery Program (Sec. 16.40.100-199)



Aquatic Farm and Hatchery Program (Sec. 16.40.100-199)

63 existing oyster, mussel, scallop, littleneck and geoduck clam farms



Aquatic Farm and Hatchery Program (Sec. 16.40.100-199)

63 existing oyster, mussel, scallop, littleneck and geoduck clam farms

- 2002 marketable production over \$500,000.00



Aquatic Farm and Hatchery Program (Sec. 16.40.100-199)

63 existing oyster, mussel, scallop, littleneck and geoduck clam farms

- Permitted under streamlined statewide batch process (includes ADF&G, DNR, DEC, USACE and ACMP consistency)



Aquatic Farm and Hatchery Program (Sec. 16.40.100-199)

Qutekcak Hatchery in Seward



Aquatic Farm and Hatchery Program (Sec. 16.40.100-199)

Qutekcak Hatchery in Seward

- Instate source of pacific oysters



Aquatic Farm and Hatchery Program (Sec. 16.40.100-199)

Qutekcak Hatchery in Seward

- Only hatchery source of indigenous shellfish (sec. 16.40.130 & 5 AAC 41.070)
 - Springboard for industry growth



Aquatic Farm and Hatchery Program (Sec. 16.40.100-199)

Qutekcak Hatchery in Seward

- Mariculture technical center
 - New species investigation



Aquatic Farm and Hatchery Program (Sec. 16.40.100-199)

- Five permitted nurseries



**Kachemak Shellfish
Growers Cooperative
Halibut Cove Nursery**

Aquatic Farm and Hatchery Program (Sec. 16.40.100-199)

- Five permitted nurseries



Tom Henderson's
FLUPSY in
Steadman Cove

Aquatic Farm and Hatchery Program (Sec. 16.40.100-199)

- Five permitted nurseries



Chenega IRA state-of-the-art FLUPSY in Prince William Sound

Shellfish Acquisition (Sec. 16.40.120) and Transport Permits (Sec. 16.40.140)

- **Protect health of Alaskan shellfish**
- **Protect genetic integrity of stocks**
- **Prevent the introduction of invasive species**



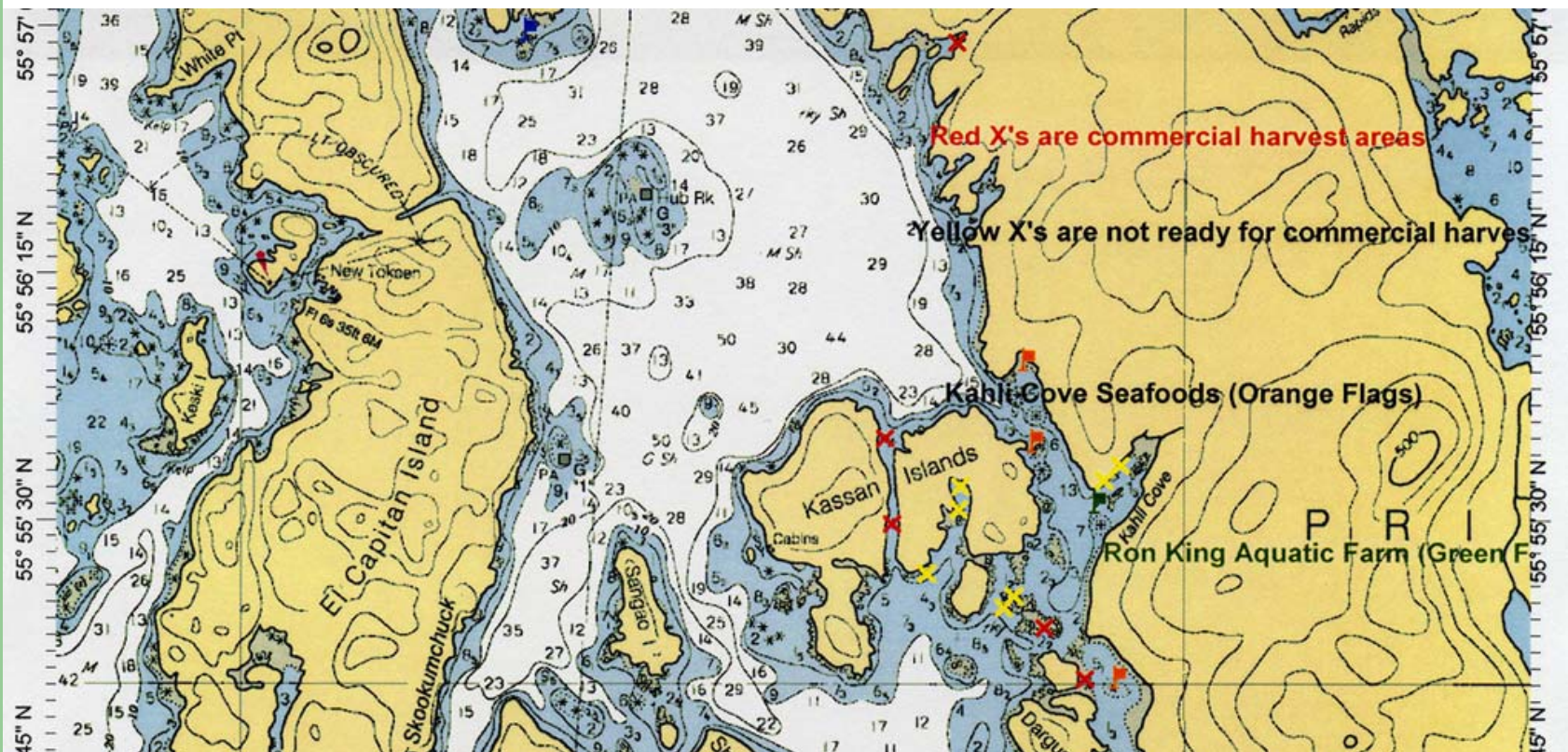
Hatchery Certifications (Sec 16.40.130, 5 AAC 41.070(b) & Sec 16.40.150)

- Simplifies Shellfish Transport Permit process



Southeast Pacific Littleneck Fishery (Chapter 38)

Moved to mariculture section for efficiency



Shellfish Restoration and Enhancement (Sec. 16.05.092)

- Eight traditional food littleneck clam restorations near native villages in PWS



Port Graham

Shellfish Restoration and Enhancement (Sec. 16.05.092)

- Exploring geoduck, sea cucumber, sea urchin and abalone restorations



Shellfish Restoration and Enhancement (Sec. 16.05.092)



- Commercial razor clam fishery restoration proposed near Cordova