



What is AIDEA?

- Alaska Industrial Development & Export Authority
 - Formed as public corporation in 1967
 - Mission: creating job opportunities and encouraging economic growth, including development of natural resources
- Experience working with private sector
- Took over Ambler Mining District Industrial Access Road (AMDIAR) in mid-2013




Purpose of the Project

- Construct industrial access road to the Ambler Mining District
- Support exploration and development of mineral resources in the Ambler Mining District
- Promote economic development and job opportunities in the region and the State





Resource Rich Region

- 75 mile long State-owned mineralized area
- Copper, zinc, lead, silver and gold
- Key deposits:
 - Arctic (Nova Copper)
 - Sun (Andover Ventures)
 - Bornite (NANA)
 - Smucker (Teck Cominco)




Mine feasibility studies show overland transportation is required for mining to be economically feasible


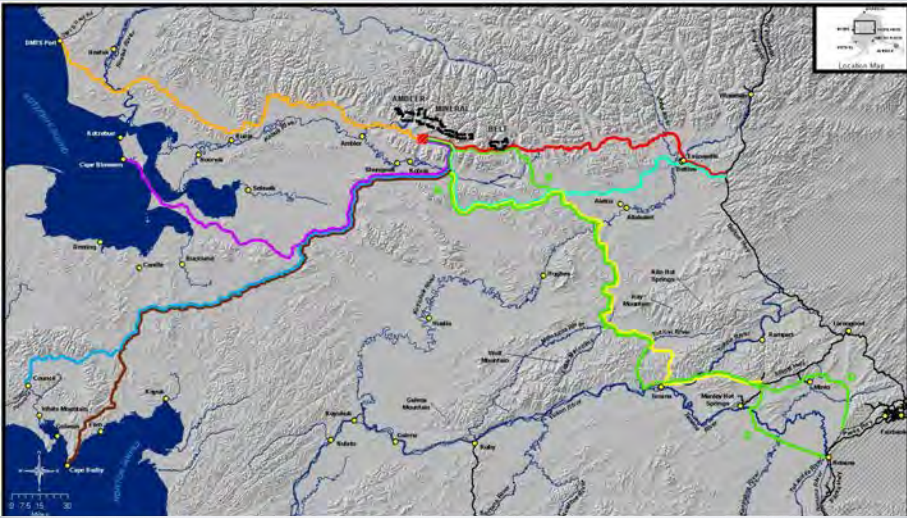


Project Development To Date

- DOT&PF initiated transportation reconnaissance efforts in 2010
- Community outreach
- Preliminary engineering
- Preliminary baseline environmental research
- Identified feasible routes





Alternatives Evaluated




Preliminary Corridor Analysis

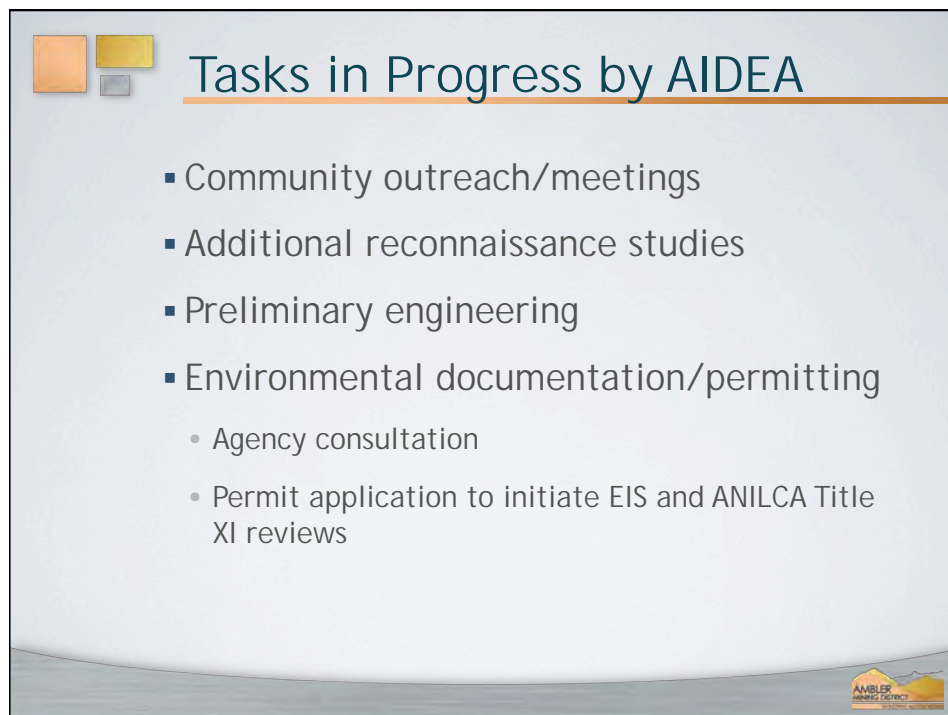
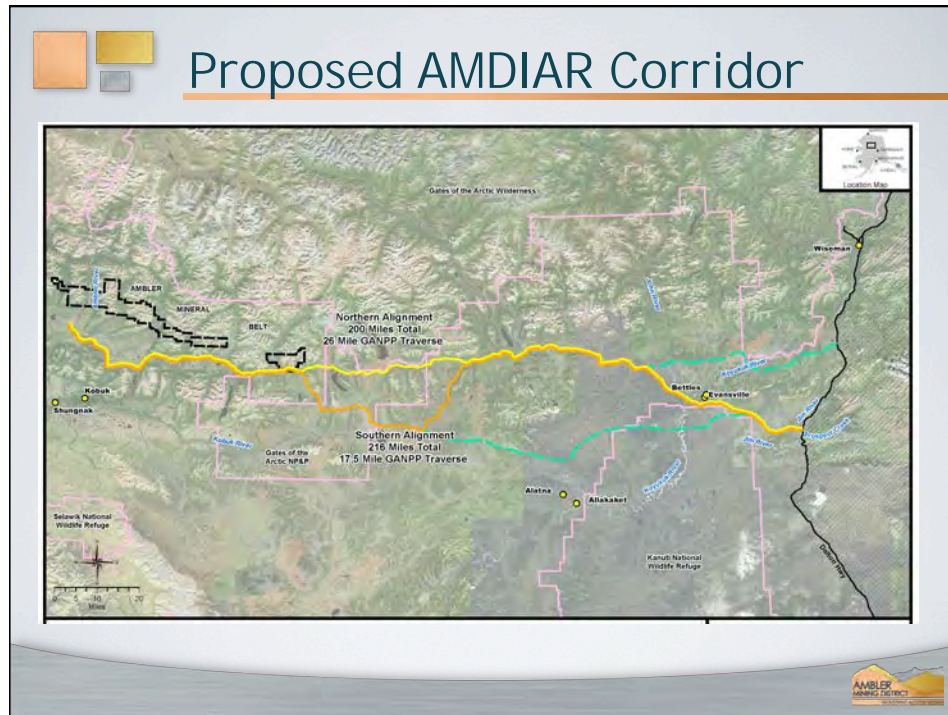
- Preliminary corridors were evaluated on:
 - Corridor length
 - Federal Conservation System units (e.g. wildlife refuges)
 - Wild and Scenic Rivers
 - Salmon/sheefish habitats
 - Caribou habitats
 - Threatened/endangered species and critical habitats
 - Wetland habitats
 - Availability of material sites
 - Construction/maintenance cost

AMDIAR East Corridor



- Most feasible route:
 - 200+/- miles long
 - Four maintenance stations
 - 15 large bridges (>150 feet)
 - Least caribou impacts, no endangered species impacts
 - Least impact on salmon/sheefish habitats
 - Corridor through Gates of the Arctic National Preserve
 - Generalized land status
 - 115+/- miles on State land
 - 45+/- miles on federal (NPS/BLM) land
 - 45+/- miles on ANCSA corporation lands






Community Input

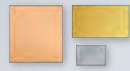
- Over 25 meetings in local communities over last 4 years
- High level of interest in communities throughout the region
- Many of the comments/concerns have centered on:
 - Economics (employment, cost of living, etc.)
 - Subsistence
 - Access (restricted vs. public) and number of vehicles
 - Environmental (wilderness, asbestos, acid rock drainage)

Addressing Community Concerns

- Concerns about access
 - AIDEA is proposing a controlled access road
- Concerns about being near Pah River Valley
 - Proposed alignment stays away from Pah River Valley
- Concerns about potential effects on caribou, water quality, etc.
 - EIS provides detailed look at potential effects and suggests ways to avoid, minimize or mitigate them





Different than Dalton Highway

- Constructed using public ROW from BLM and closed by Commissioner of Transportation
- Dalton Highway owned by State and managed by DOT&PF - Commissioner has authority to open or close road
- Dalton Highway placed on the Federal Aid Highway System - allowed federal funds to be used for maintenance and repairs



Similar to Red Dog Mine Road

- Controlled access - for industrial use only
- Not designed to public highway standards
- User tolls to fund/repay construction, maintenance, and eventual reclamation
- Lessons learned from Red Dog Mine Road:
 - How to deal with caribou crossing road
 - How to identify road crossings for local community
 - Covered/closed containers to limit potential for dust
 - Commercial driver training/enforcement

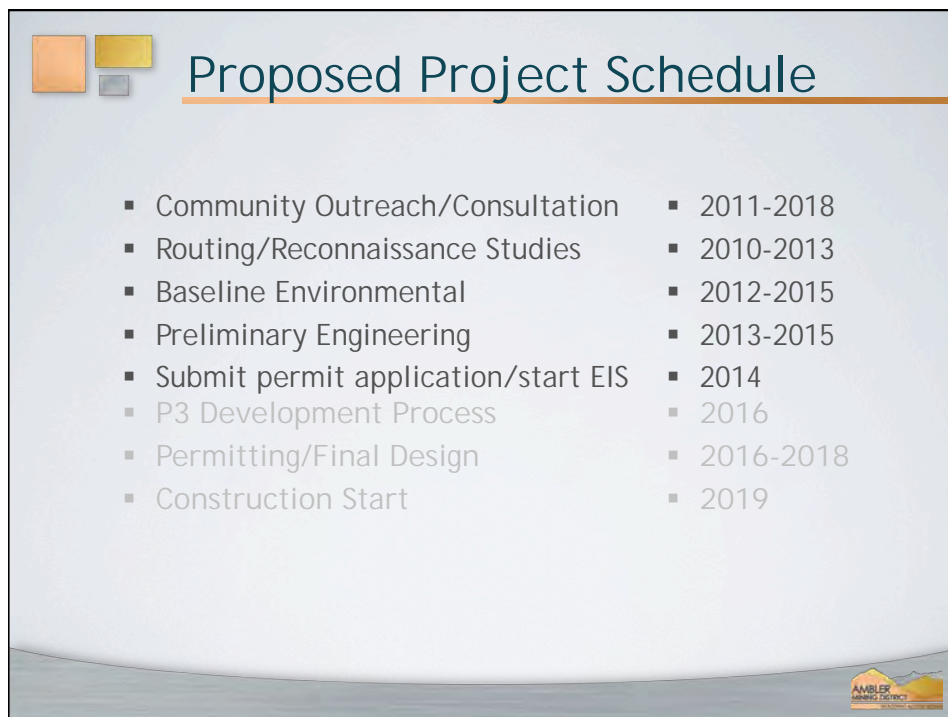
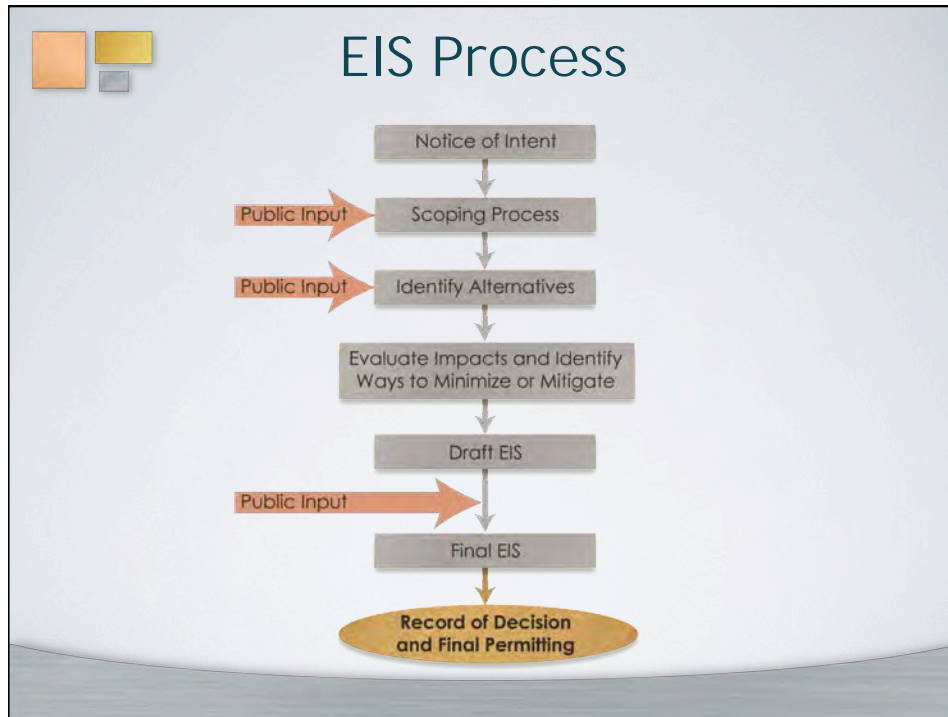




Project Development Steps

- Reconnaissance Studies
- AIDEA Board approves Filing for Environmental Impact Statement
- Environmental Impact Statement
- Financing Analysis
- AIDEA Board decision to proceed
- Final design/permitting
- Construction
- Operation
- Reclamation

AMBLER MINING DISTRICT



Questions/Comments?

