



# **ALASKA BOARD OF GAME**

## **Special Meeting on Copper Basin Area**

**March 18-21, 2017**

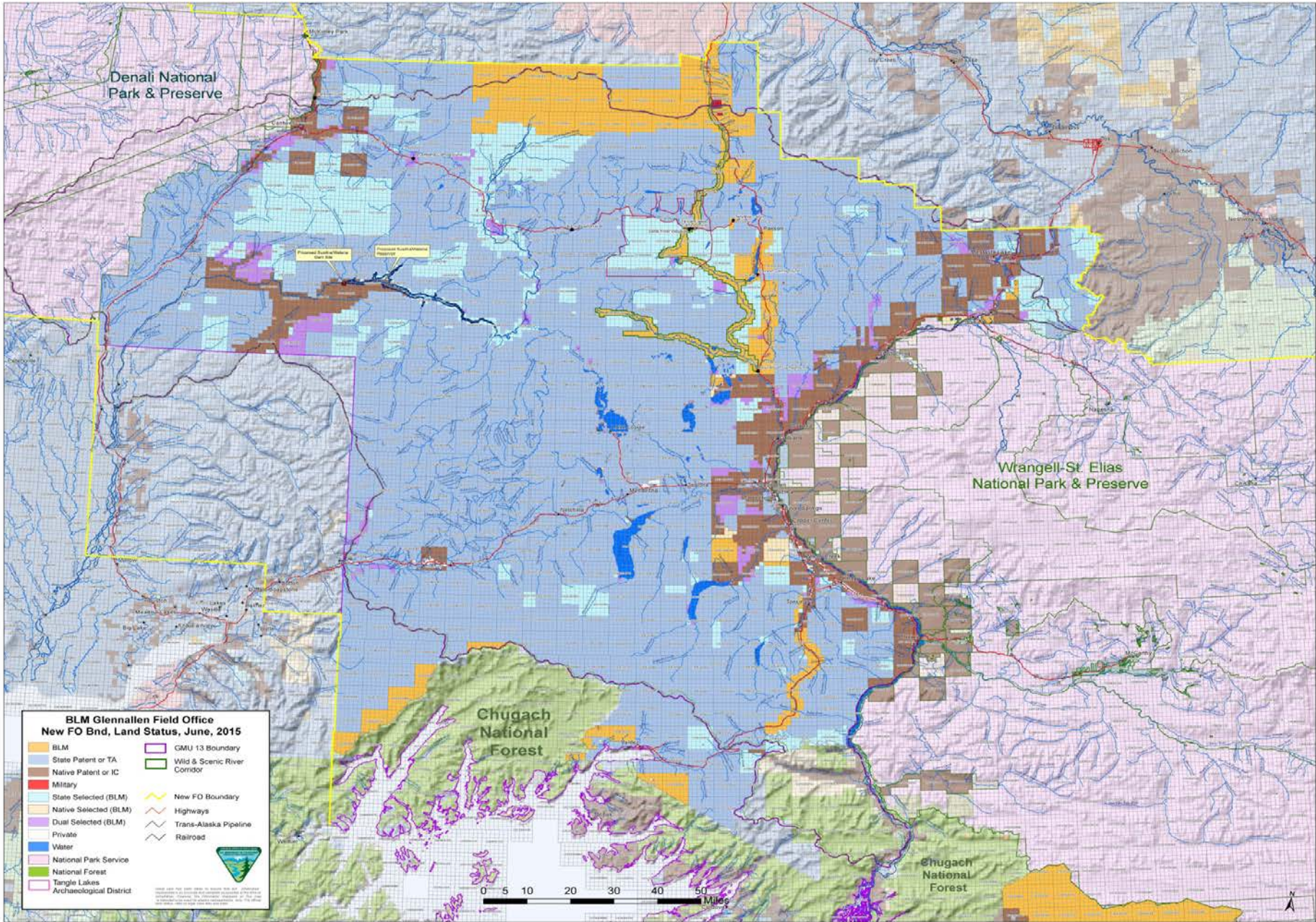
**Presented by Jesse Hankins, BLM**



# Glennallen Field Office BLM:

- 4.4 million acres of public lands (Cantwell to Ketchikan)
- 4 Alaska Native regional corporations
- 4 village corporations
- 25 Federally recognized tribes
- 2 Wild and Scenic Rivers in Alaska (highway accessible)
- 908 miles of inventoried trails
- 4 Campgrounds (highest visitation of all BLM-Alaska)
- 2 waysides
- 4 boat launches
- 2 Federal Subsistence Permitted Harvest Opportunities









# Delegation of Authority:

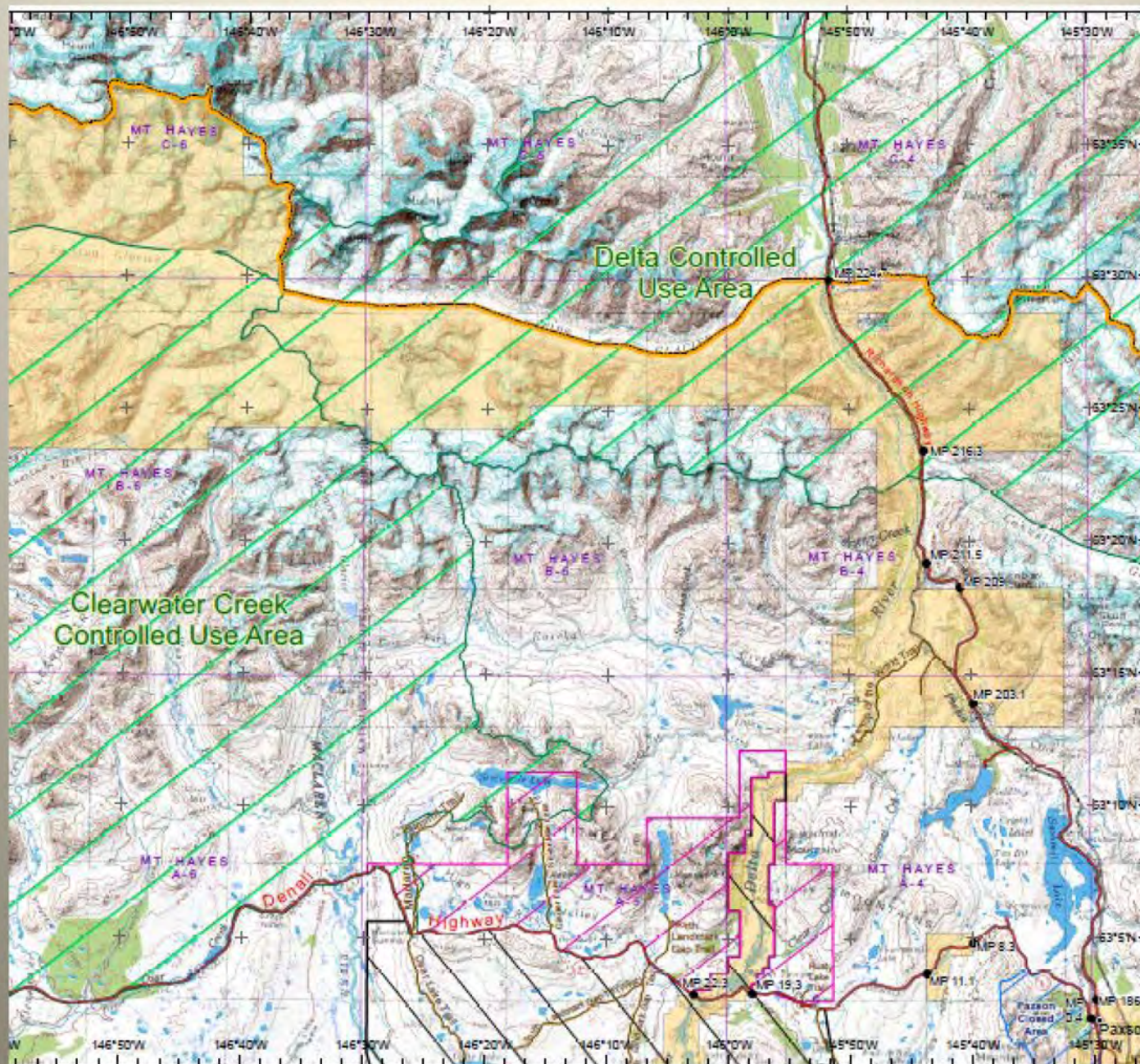
- **Delegated Authority for FM1301, FC1302 and 3 cultural permits**
    - **FM1301- Aug 1-Sept 20**
      - **1 antlered bull (1 per household 13E)**
    - **FC1302- Aug 1-Sept 30 and Oct 21-Mar 31**
      - **2 caribou- sex to be announced by BLM**
- \*\*\*2016 by the numbers – 8,126 Federal permits issued AK wide with 4,902 issued by GFO (60%)**



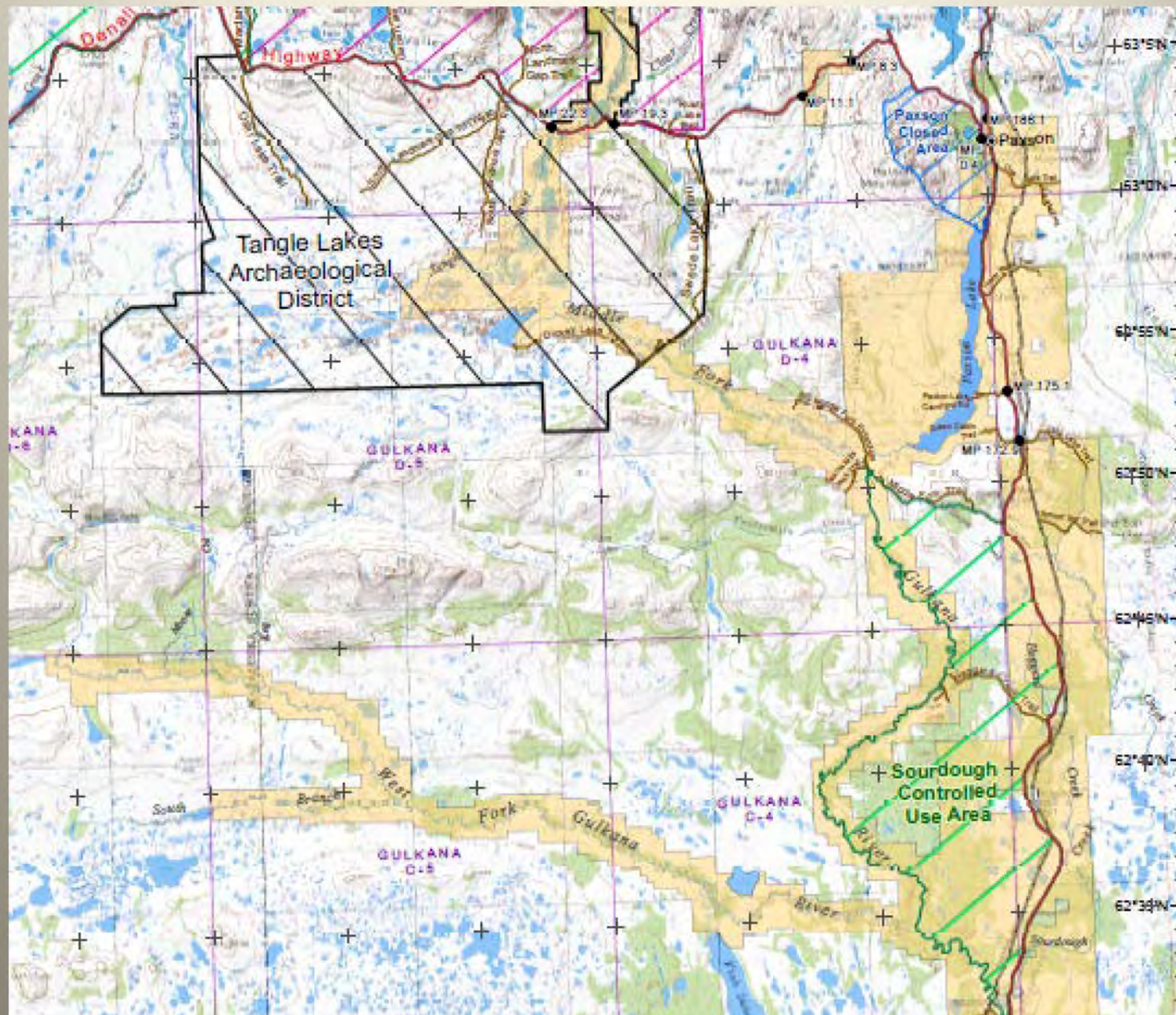
# GMU 13 Federal Public Lands:

- **Approximately 1.9 million total Federal acres in GMU13 (BLM, NPS, FS)**
  - **Approximately 770,000 BLM Federal acres in GMU 13**
    - **Predominate use - Richardson Highway, Gulkana and Delta River Corridors**
- \*\*\*\*2014 - Approximately 29,000 acres of BLM Federal land made available to Federal subsistence harvest**





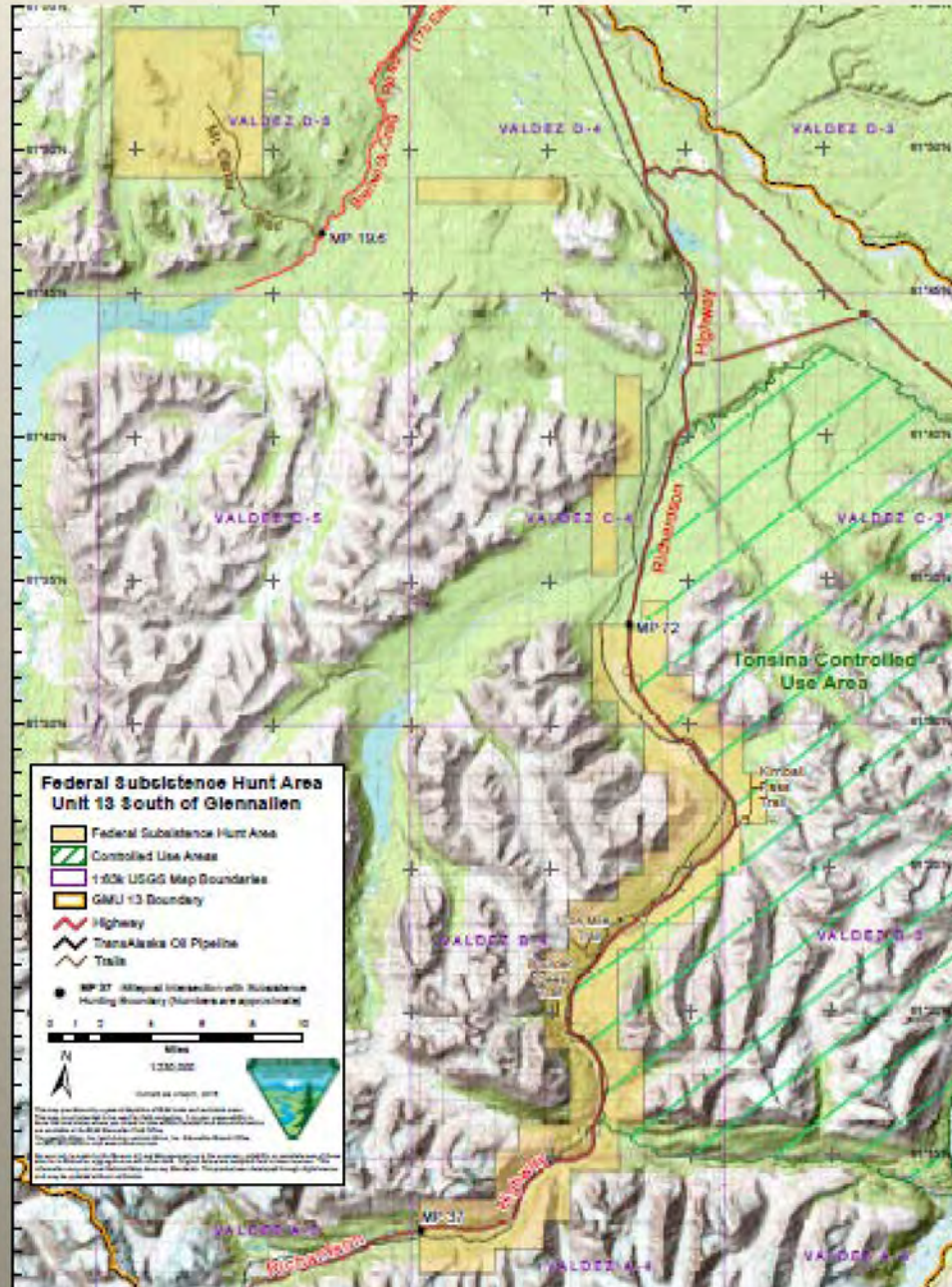








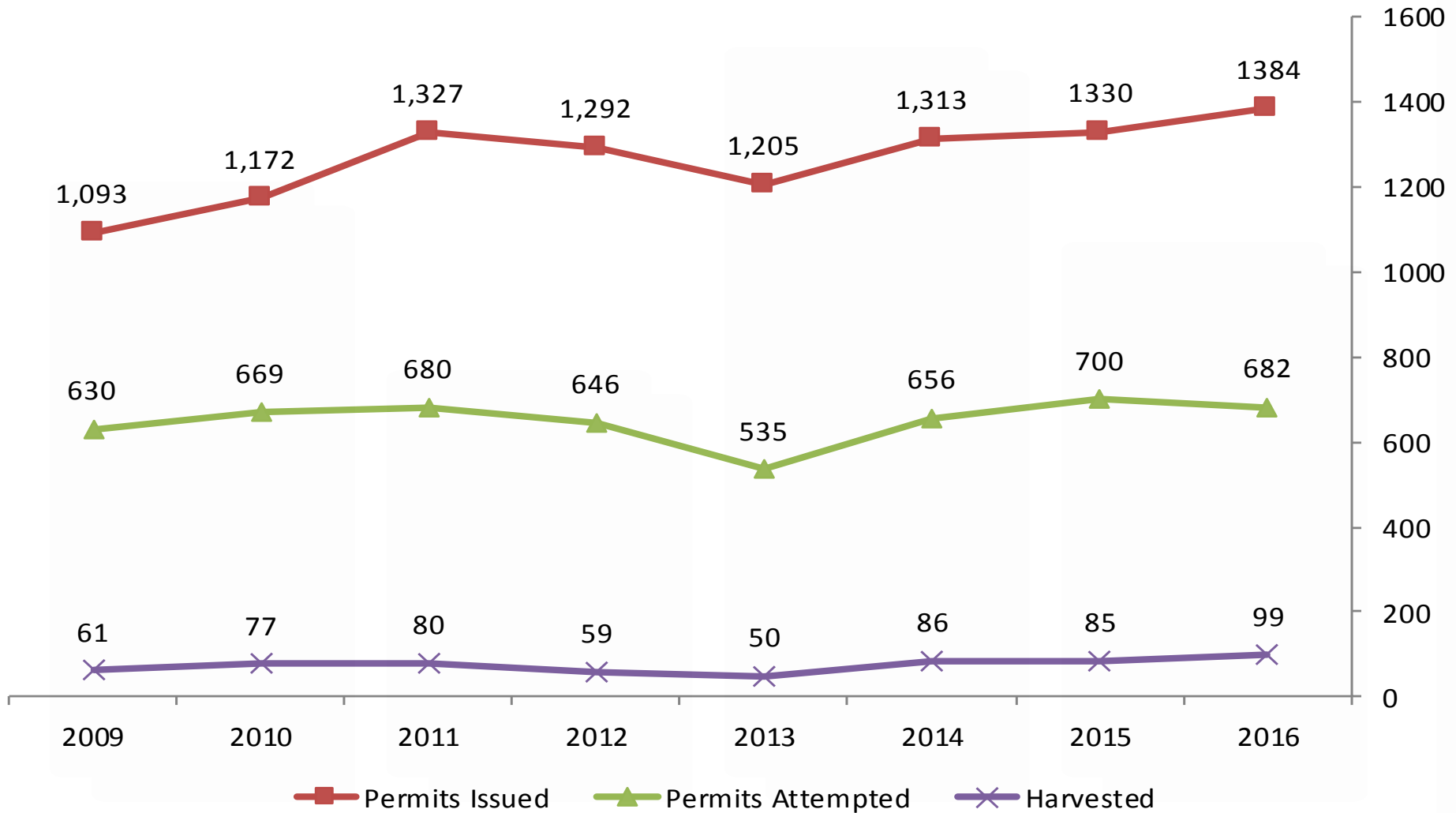








# Federal Subsistence Moose Harvest (FM1301) from 2009 to 2016







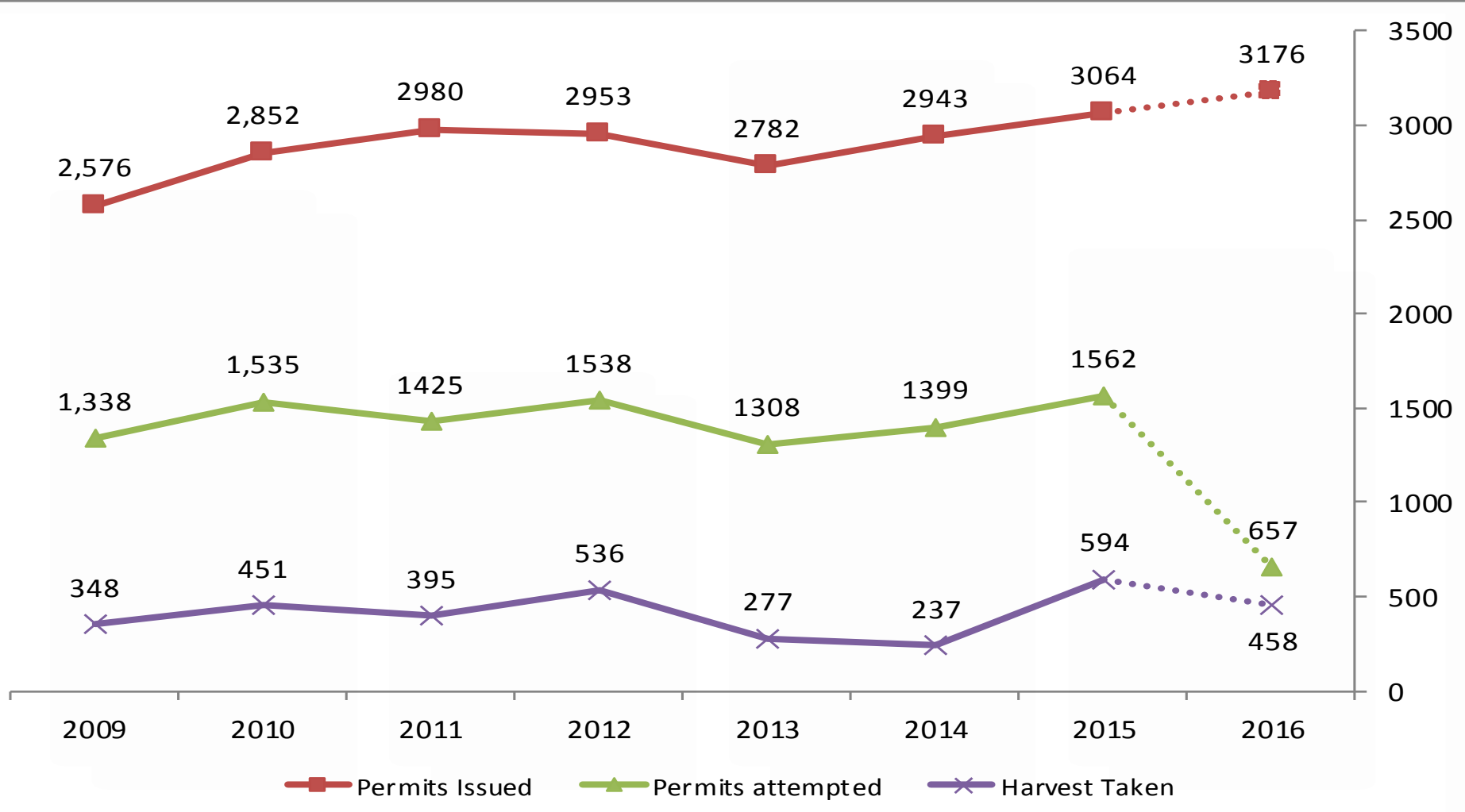
# 2016 Federal Subsistence Moose Harvest and averages from 2009 to 2016

	<b>Permits Issued</b>	<b>Permits Attempted</b>	<b>Bulls Harvested</b>	<b>Hunters Successful</b>
<b>2016</b>	<b>1,384</b>	<b>682</b>	<b>99</b>	<b>14.6%</b>
<b>Average Since 2009</b>	<b>1264</b>	<b>650</b>	<b>75</b>	<b>11.4%</b>





# Federal Subsistence Caribou Harvest (FC1302) from 2009 to 2016 \*ends 3/31/17





# 2016 Federal Subsistence Caribou Harvest and averages from 2009 to 2015

\* Season open until 3/31/17

\*\* Does not include 2016

	<b>Permits Issued</b>	<b>Permits Attempted</b>	<b>Total Harvested</b>	<b>Hunter Success</b>
<b>2016 *</b>	<b>3176</b>	<b>657</b>	<b>458</b>	<b>69.7%</b>
<b>Average Since 2009 **</b>	<b>2879</b>	<b>1444</b>	<b>405</b>	<b>27.7%</b>





# Special Action Request FC-01-16

- **Additional 6 days for Federal Subsistence Users**
  - **October 15- October 20**
  - **215 harvested**



U.S. Department of the Interior  
Bureau of Land Management

# Comments or Questions

