

# Noatak Controlled Use Area Subsistence Information

## Proposal 44 GMU 23 Extend boundaries



# Proposal 44

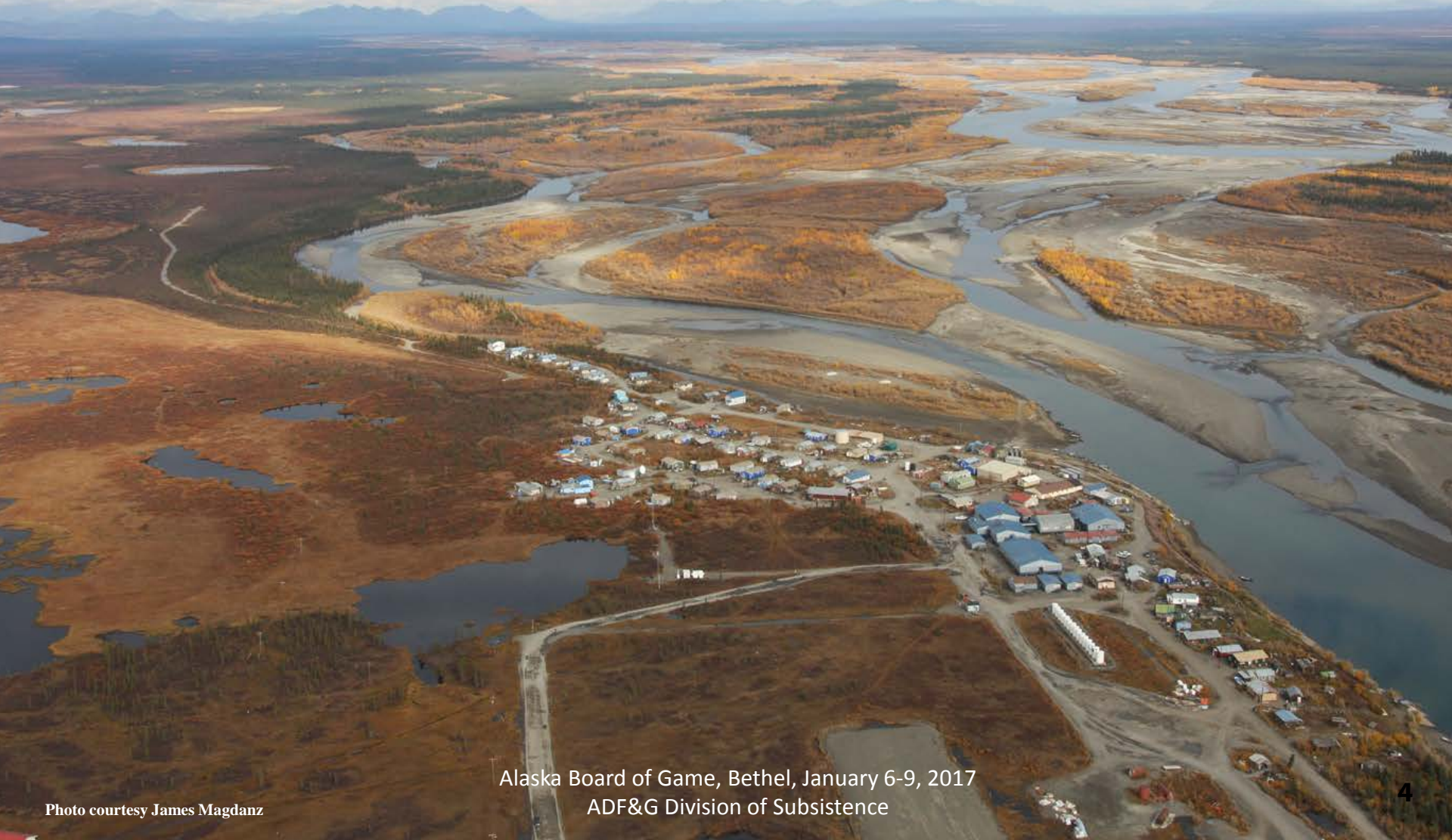
- **Requests extending the upper boundary of the Noatak Controlled Use Area to from Sapun Creek to the Cutler River**
  
- **Department Recommendation: Neutral.**

# Presentation Order

- **Background on Noatak controlled use area**
  - History of CUA
  - Current boundaries
- **Spatial information on use by Noatak residents and other hunters**
- **Harvest information**
  - Noatak harvest since 1994
  - Other Alaskans
  - Non-resident hunters

# Background

## *Noatak Controlled Use Area*



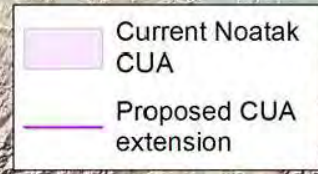
Alaska Board of Game, Bethel, January 6-9, 2017  
ADF&G Division of Subsistence

Photo courtesy James Magdanz



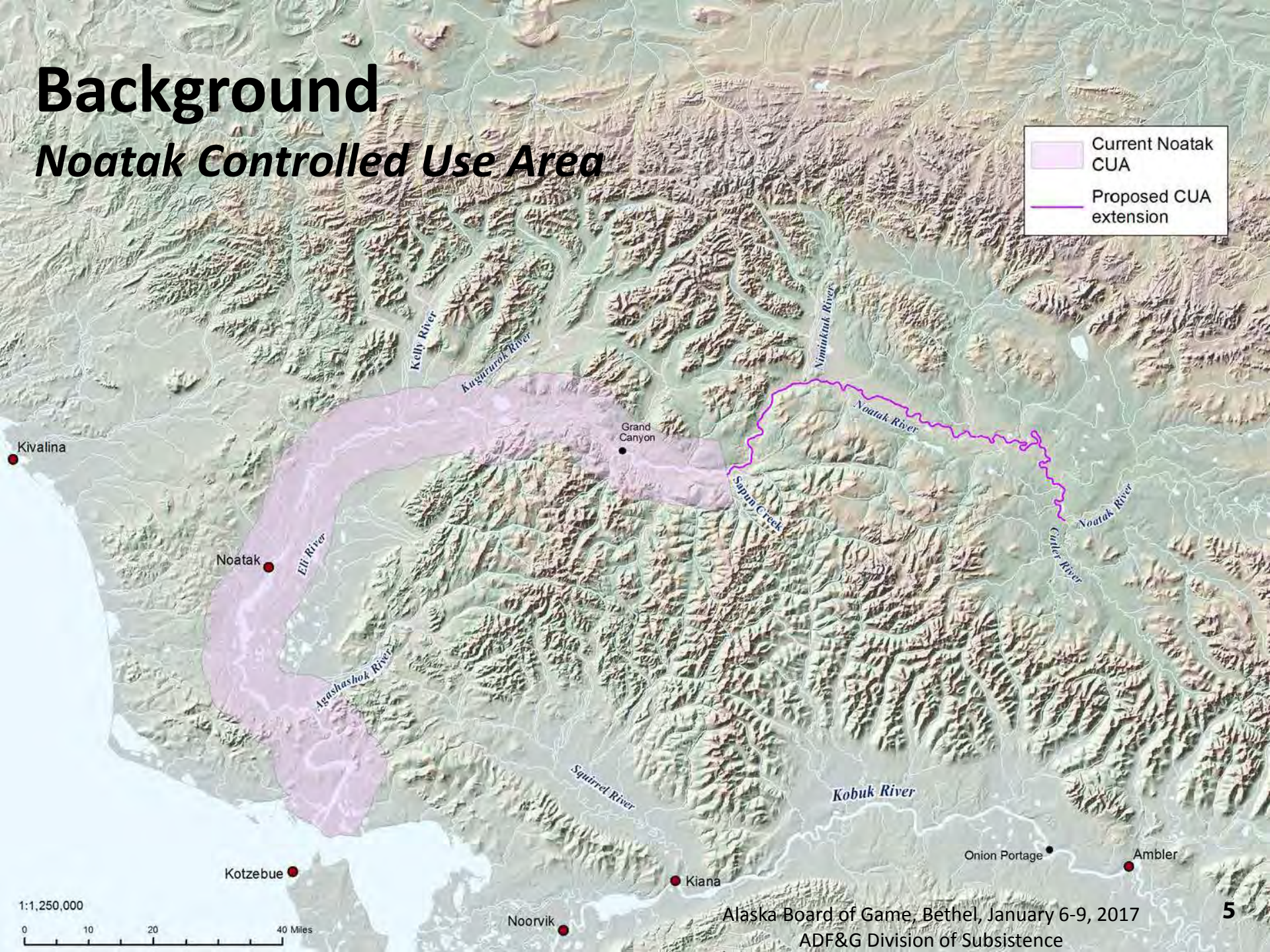
# Background

## *Noatak Controlled Use Area*



Current Noatak CUA

Proposed CUA extension



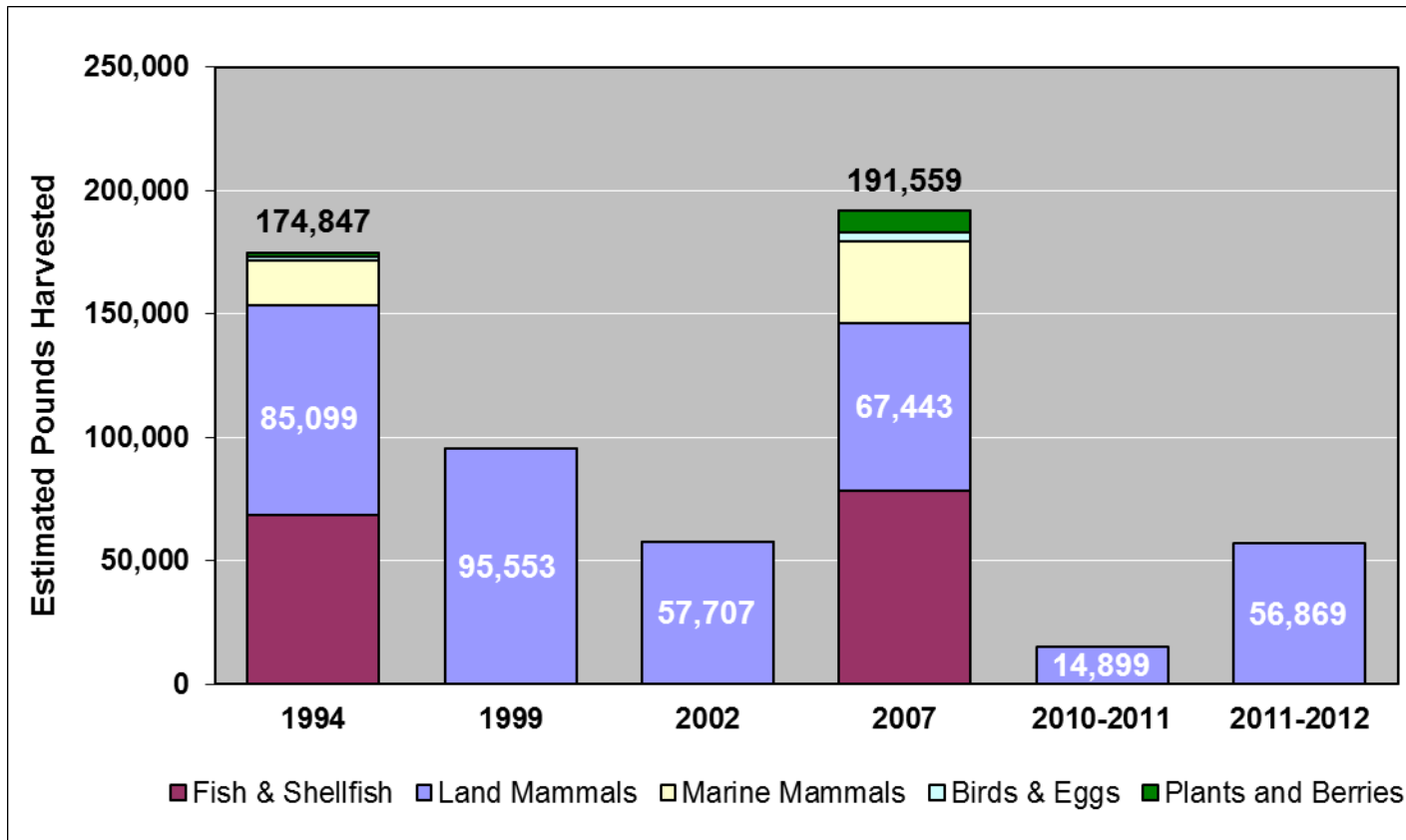
1:1,250,000  
0 10 20 40 Miles

Alaska Board of Game, Bethel, January 6-9, 2017  
ADF&G Division of Subsistence



# Noatak caribou harvest estimates

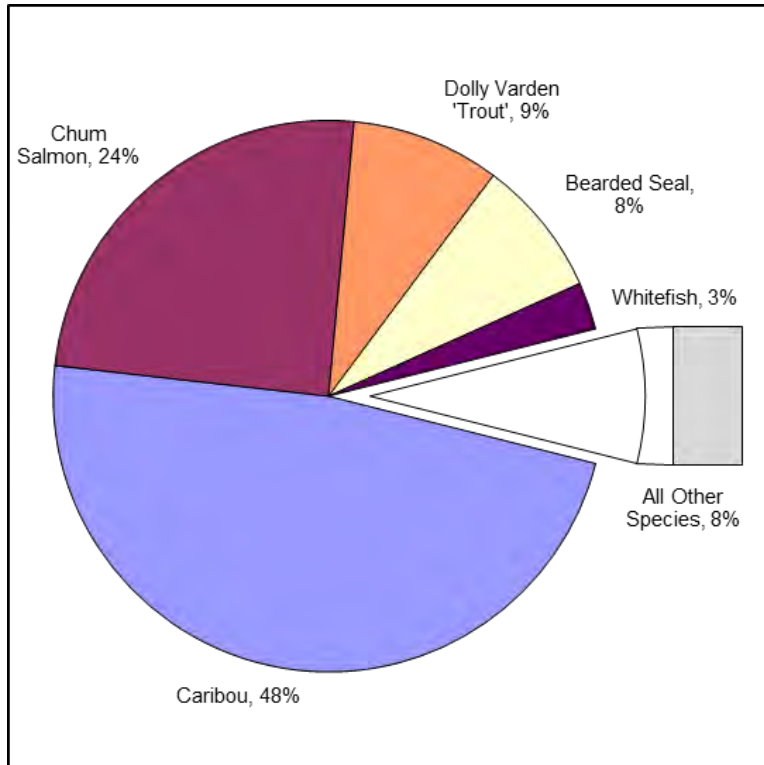
## *Household surveys 1994-2012*



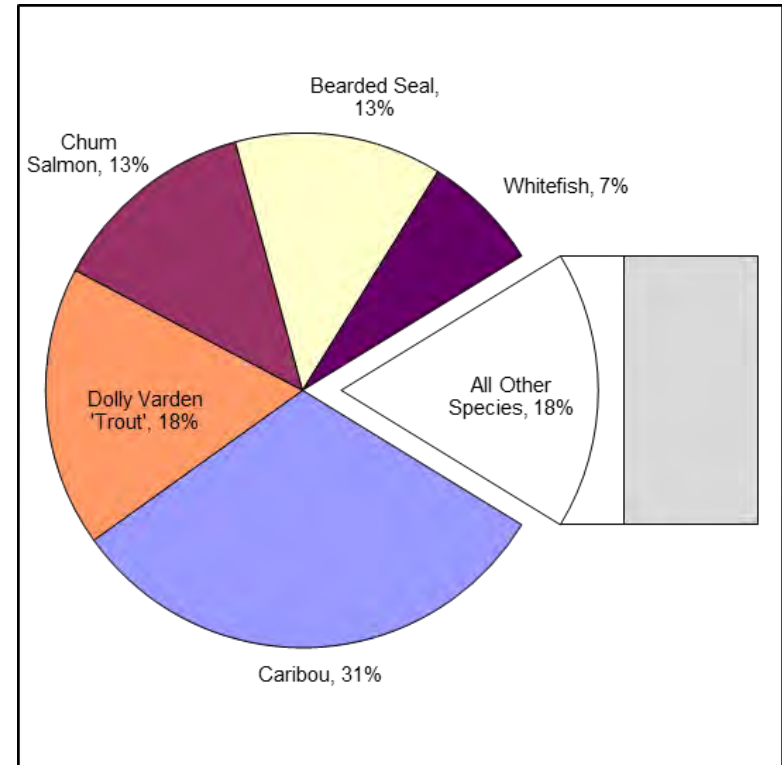
# Noatak caribou harvest estimates

*Contribution to total community harvests, 1994 and 2007*

**1994 Estimate: 174,847 pounds**

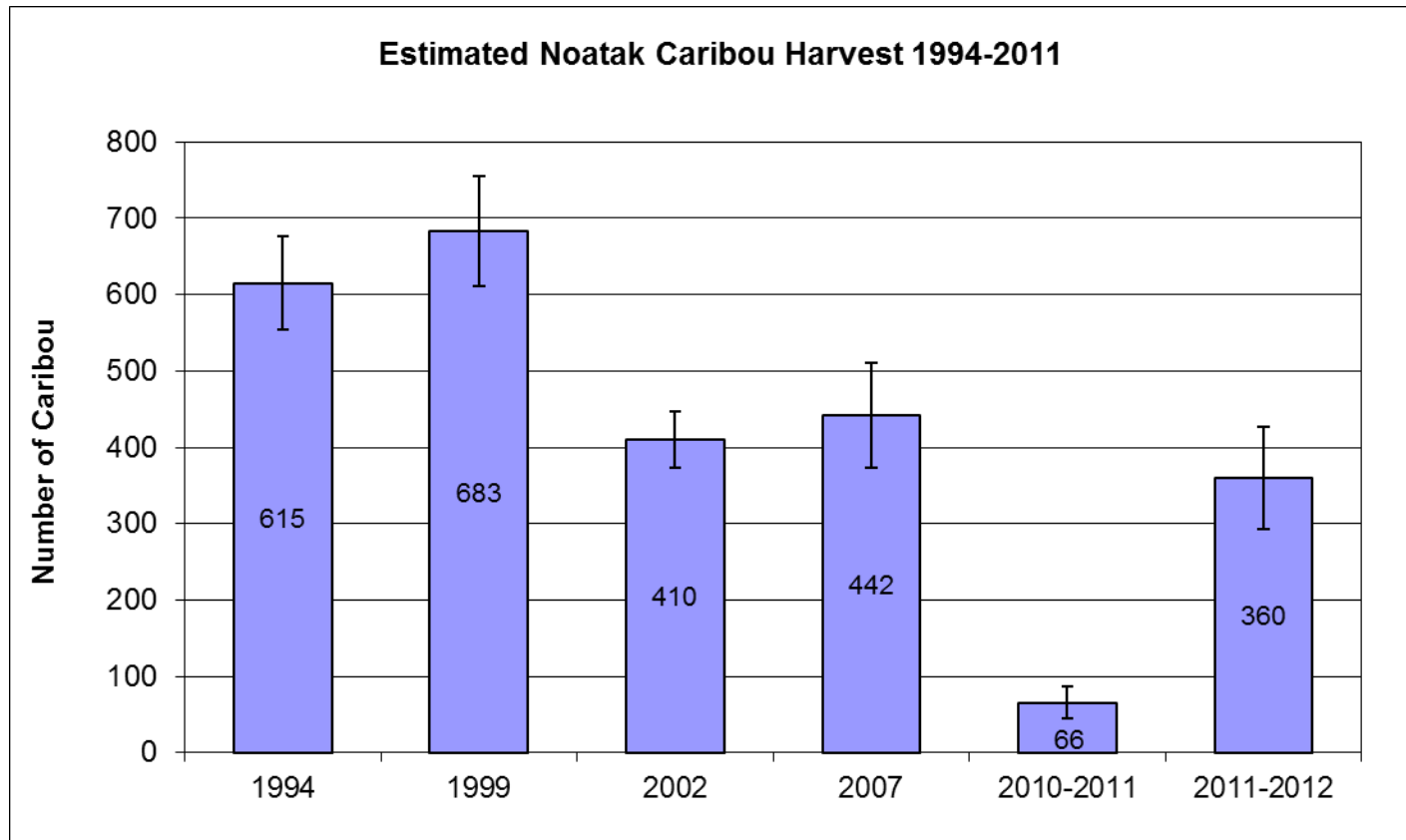


**2007 Estimate: 191,599 pounds**



# Noatak caribou harvest estimates

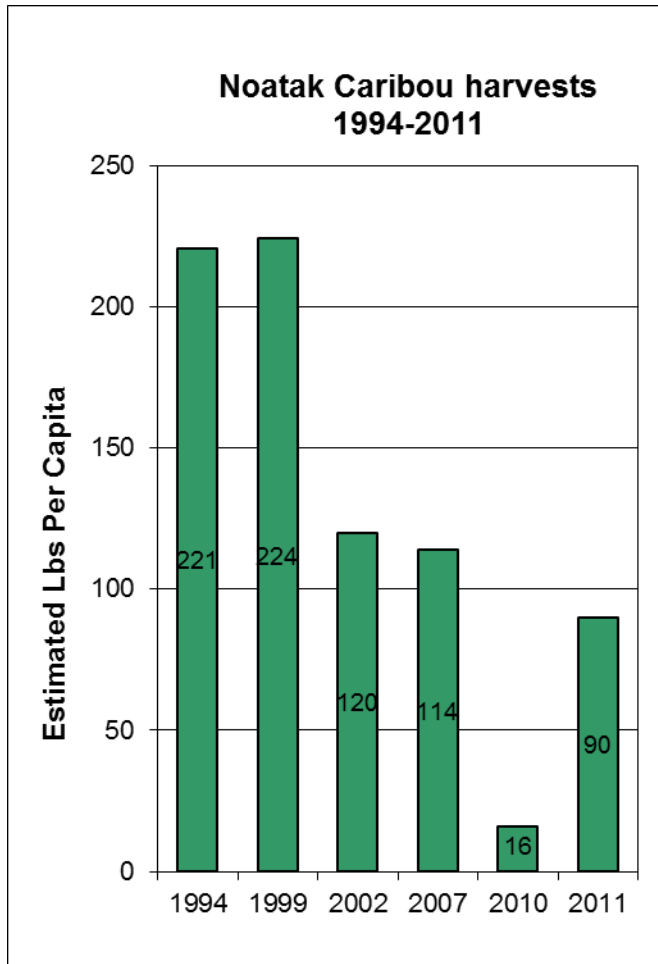
## *Household surveys 1994-2012*





# Noatak caribou harvest estimates

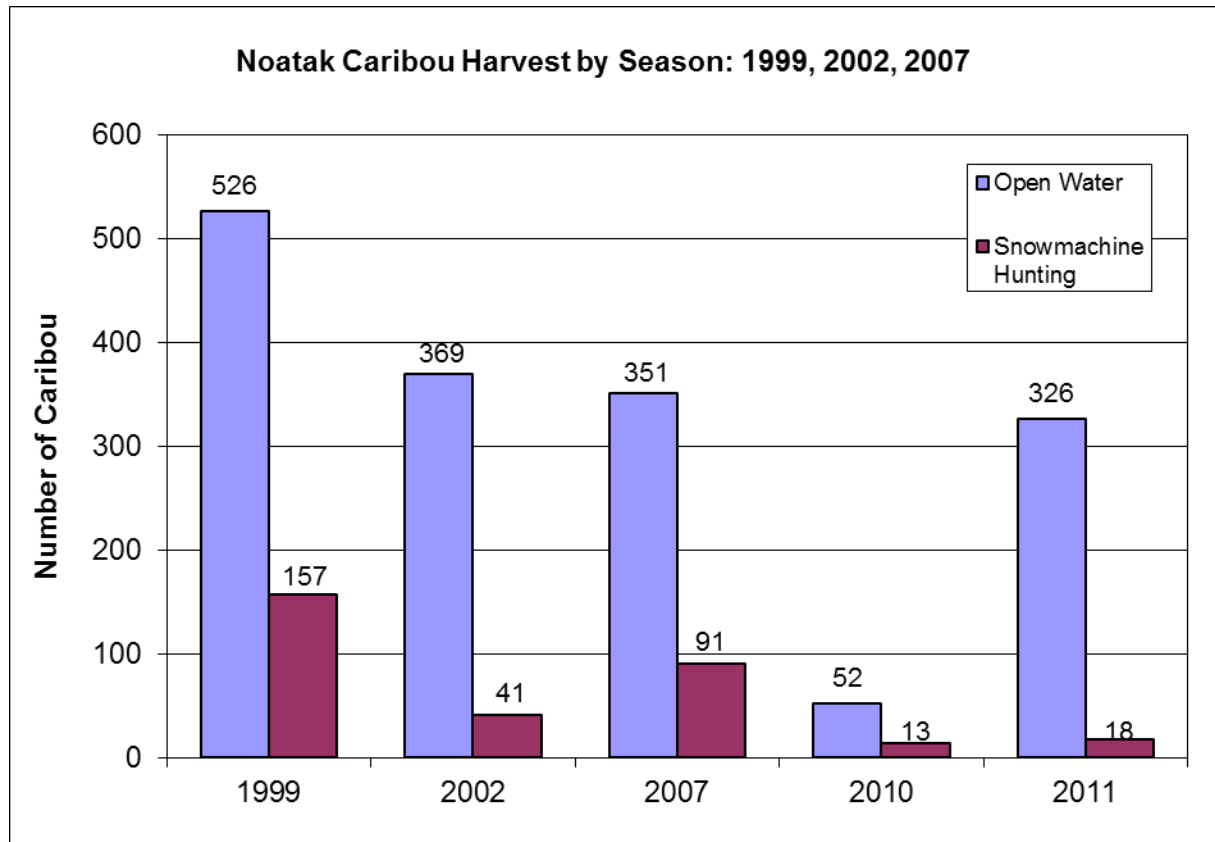
## *Household surveys 1994-2012*



- About 30% fewer caribou harvested in 2002 and 2007 than in 1990s data.
- Per capita harvest in most recent studies less than half those documented in 1990s.
- Noatak's population grew from 385 in 1994 to 489 in 2011.

# Noatak caribou harvest timing

*By season, 1999-2011*



- **Open Water Season = May through October**
- **Month of harvest information only available 2007 and later**

**Aug-Oct harvests are the bulk of annual harvest**

- **2007: 80%**
- **2010: 80%**
- **2011: 91%**

# Unit 23 harvests timing other hunters

## *Other Alaskans and non-resident hunters, regulatory year*

	1998	1999	2000	2001	2002	2003	2004	2005	2006	2007	2008	2009	2010	2011	2012	2013	2014	2015	Total
Unit 23 resident	14	36	29	21	25	21	19	23	26	2	4	6		3	10	2	3	31	275
Other Alaskan	326	201	354	187	292	292	305	284	235	241	320	268	138	310	207	124	140	133	4357
Non-Resident	228	200	271	213	226	241	312	383	403	220	216	127	122	236	197	151	139	115	4000
Unknown	13	11	4	7	13	6	1		20	9	12		2	1	6	1	1	12	119
	581	448	658	428	556	560	637	690	684	472	552	401	262	550	420	278	283	291	8751

- **Of 8,751 caribou : 50% by Other Alaskans, 56% by non-residents**
- **Harvests concentrated in fall months, August –September: 93%**

Month	1998	1999	2000	2001	2002	2003	2004	2005	2006	2007	2008	2009	2010	2011	2012	2013	2014	2015	Total
January	1		4	5	3			2	2	1		1	4	6	8	1		1	39
February	1	1	1	3	1			2			1		1		9	3	4	3	30
March		2	4	1	7				4	1	1				17	2	6	1	46
April	1	9	3	3	2		5	4	1	2	4	1		11	11	6	1	1	65
May	1	1				5	2		2		1			3					15
June	1							1	1			1		1	1				6
July		5				1	1	2	1	1		2	1		1	1			16
August	45	48	71	48	52	25	37	29	46	27	50	25	8	43	23	24	34	31	666
September	515	361	551	344	465	513	562	612	594	426	482	356	244	451	320	227	213	230	7466
October	10	18	13	16	23	11	18	22	20	8	4	13	4	17	16	12	19	9	253
November			1	2	2	3	6	5	2		2	1		11	3		5	3	46
December		2	2	1	1			2						2	5			1	16
Unknown	6	1	8	5		2	6	9	11	6	7	1		5	6	2	1	11	87
	581	448	658	428	556	560	637	690	684	472	552	401	262	550	420	278	283	291	8751



# Caribou hunting areas, Noatak

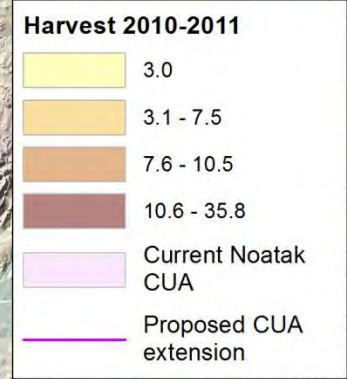
## *Search and harvest areas, 2007*





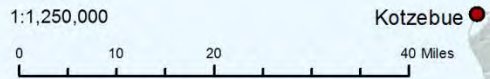
# Caribou harvest areas, Noatak

*By uniform coding unit, 2010-2011*



**Not shown on this map – approximately 11 caribou harvested near Buckland in winter 2011.**

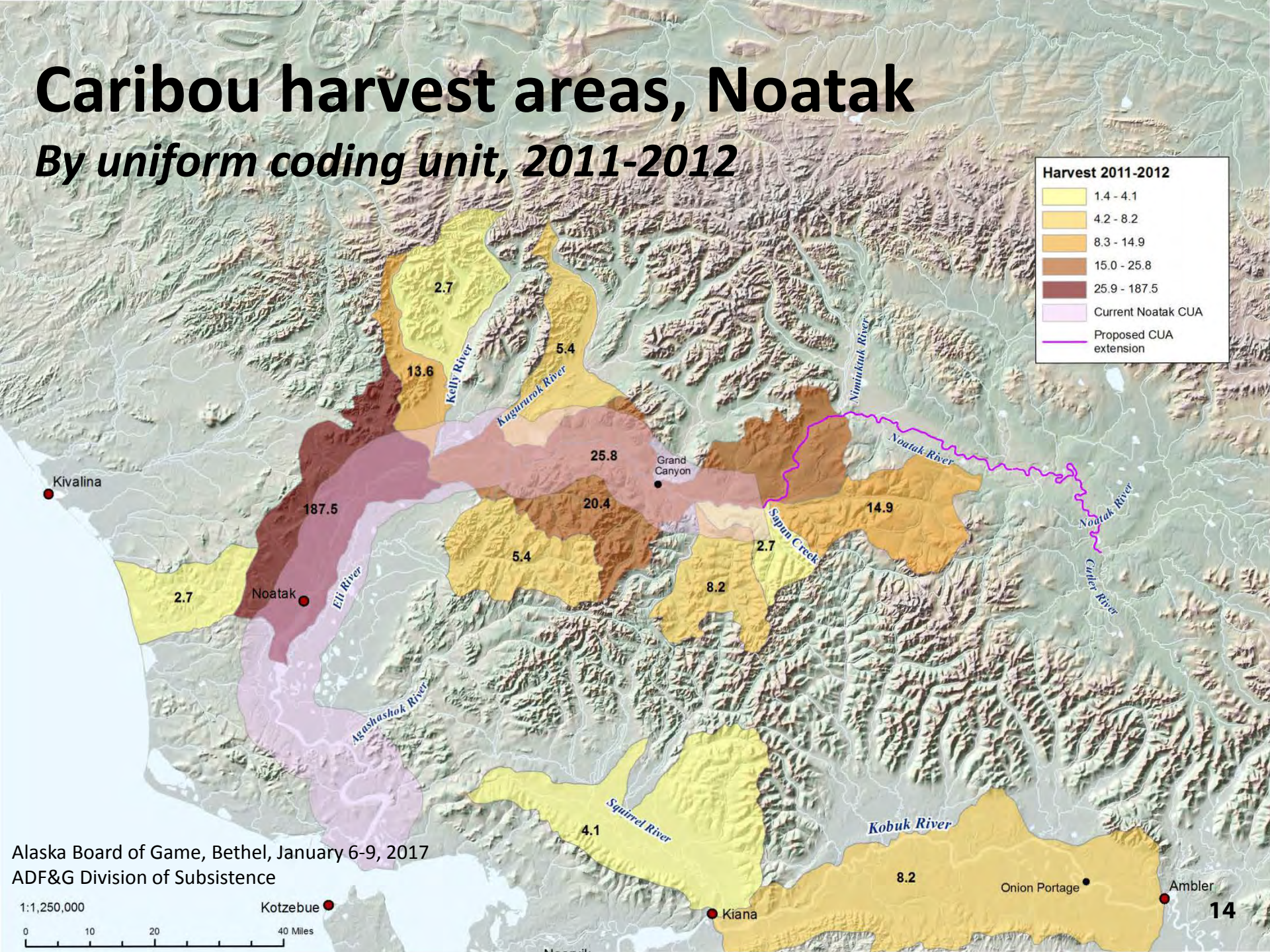
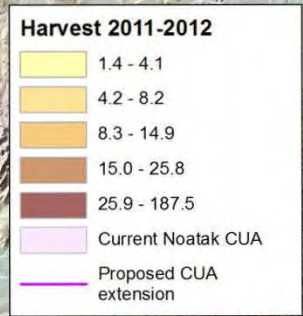
Alaska Board of Game, Bethel, January 6-9, 2017  
ADF&G Division of Subsistence





# Caribou harvest areas, Noatak

## By uniform coding unit, 2011-2012



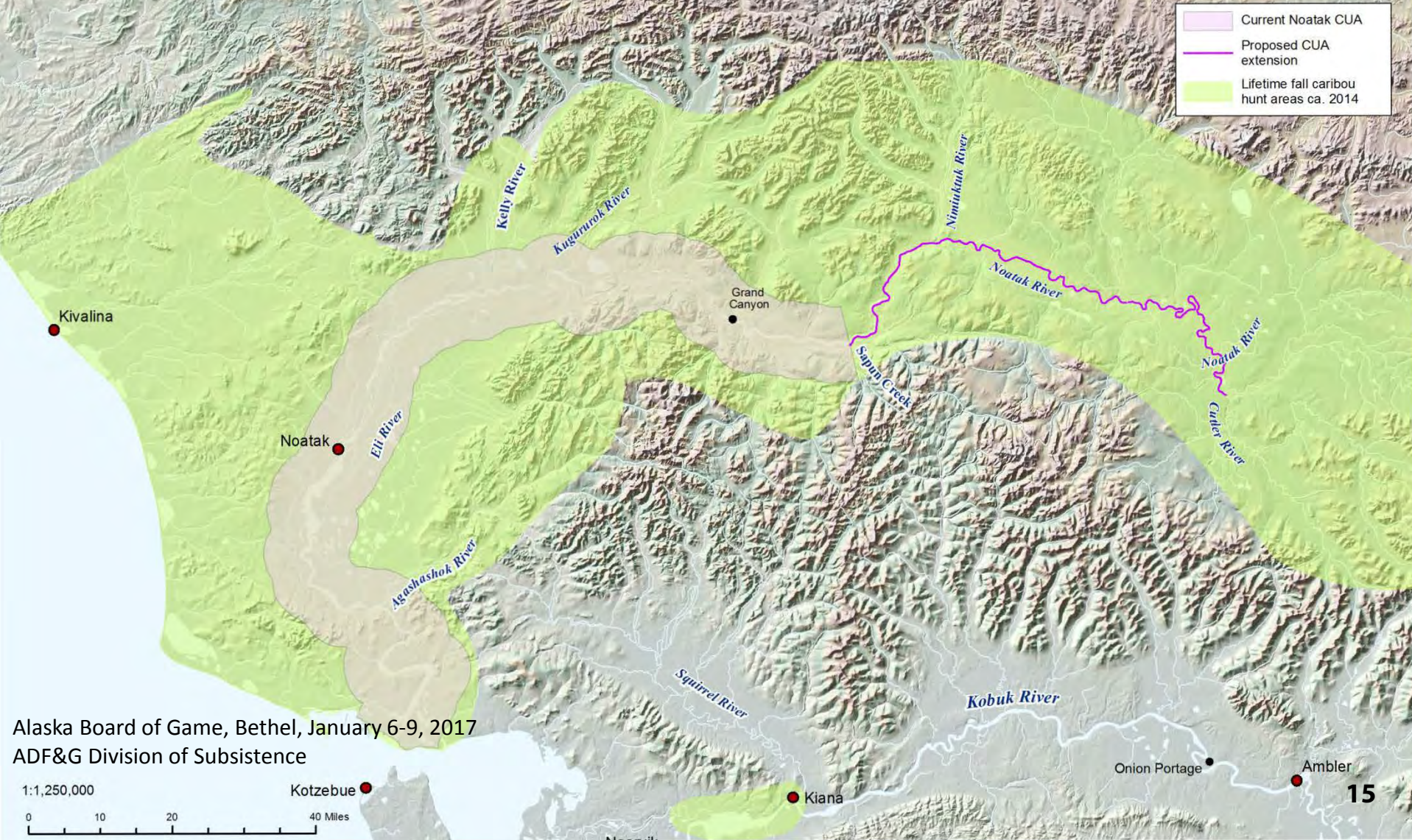
Alaska Board of Game, Bethel, January 6-9, 2017  
 ADF&G Division of Subsistence

1:1,250,000  
 0 10 20 40 Miles  
 Kotzebue



# Caribou hunting areas, Noatak

*Lifetime ca. 2014, Northwest Arctic Borough map project*





- **END**