

Figure 1. Map of North Cook Inlet management streams which have Chinook salmon escapement goals (each labeled stream), including those listed as stocks of concern (red dots), the Skwentna subsistence fishing area (red rectangle), and genetic stock identification reporting groups (outlined areas). The NCI Northwest and Susitna-Matanuska reporting groups are the same as depicted in figure 1.

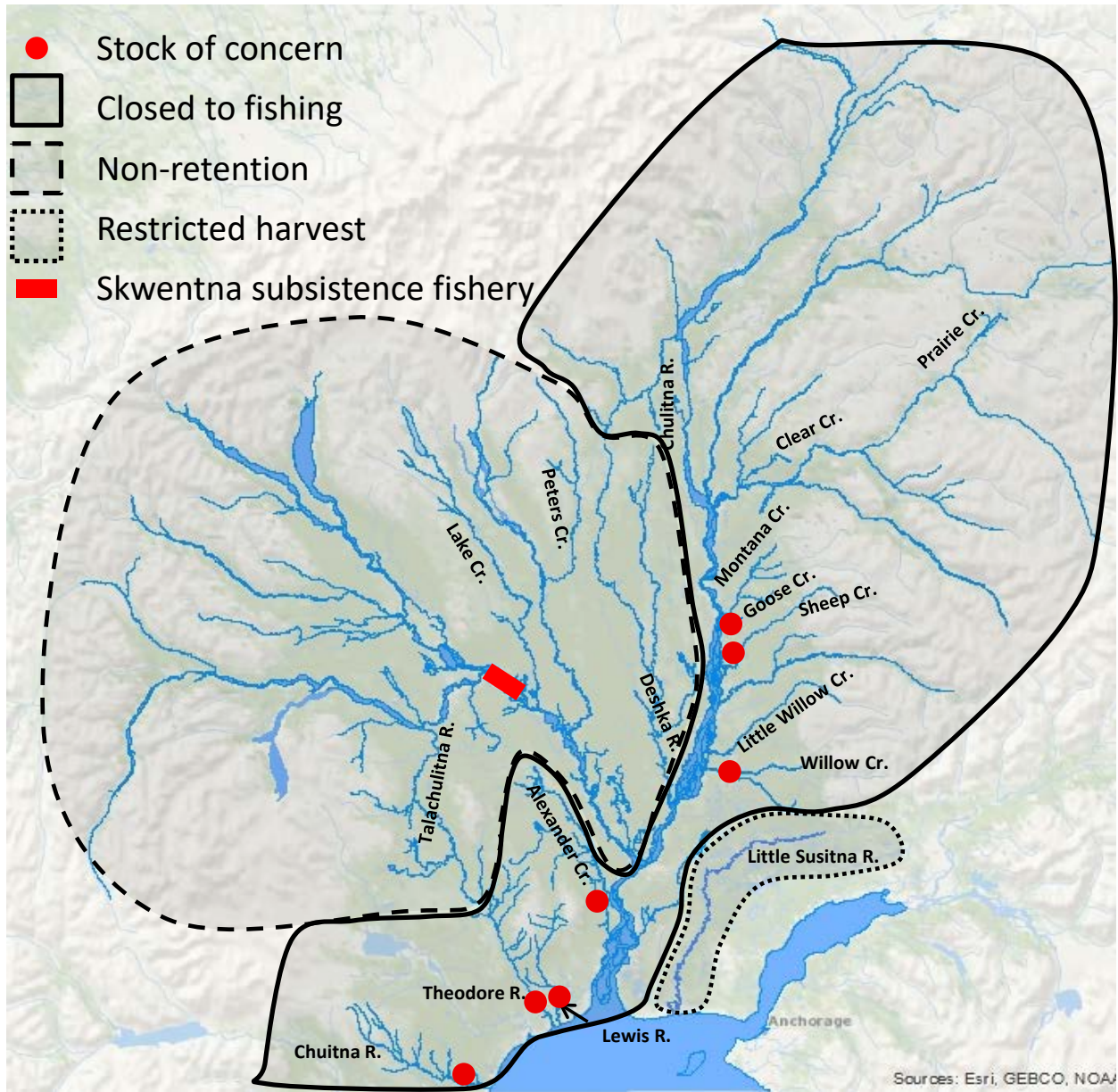


Figure 2. Map of North Cook Inlet management streams which have Chinook salmon escapement goals (each labeled stream), including those listed as stocks of concern (red dots), 2018 sport fishing regulation status (shaded areas), and the Skwentna subsistence fishing area (red rectangle).