

PRINCE WILLIAM SOUND (PWS)

Shrimp Pot Fisheries



by

Maria Wessel and Jan Rumble

Division of Commercial Fisheries

and

Mike Thalhauser

Division of Sport Fish

Alaska Department of Fish and Game

This report can be found in RC3 Tab 1



Presentation Outline

- Life History
- Survey and Fishery Model
- Shrimp Pot Fisheries
 - Commercial
 - Noncommercial
- Proposals



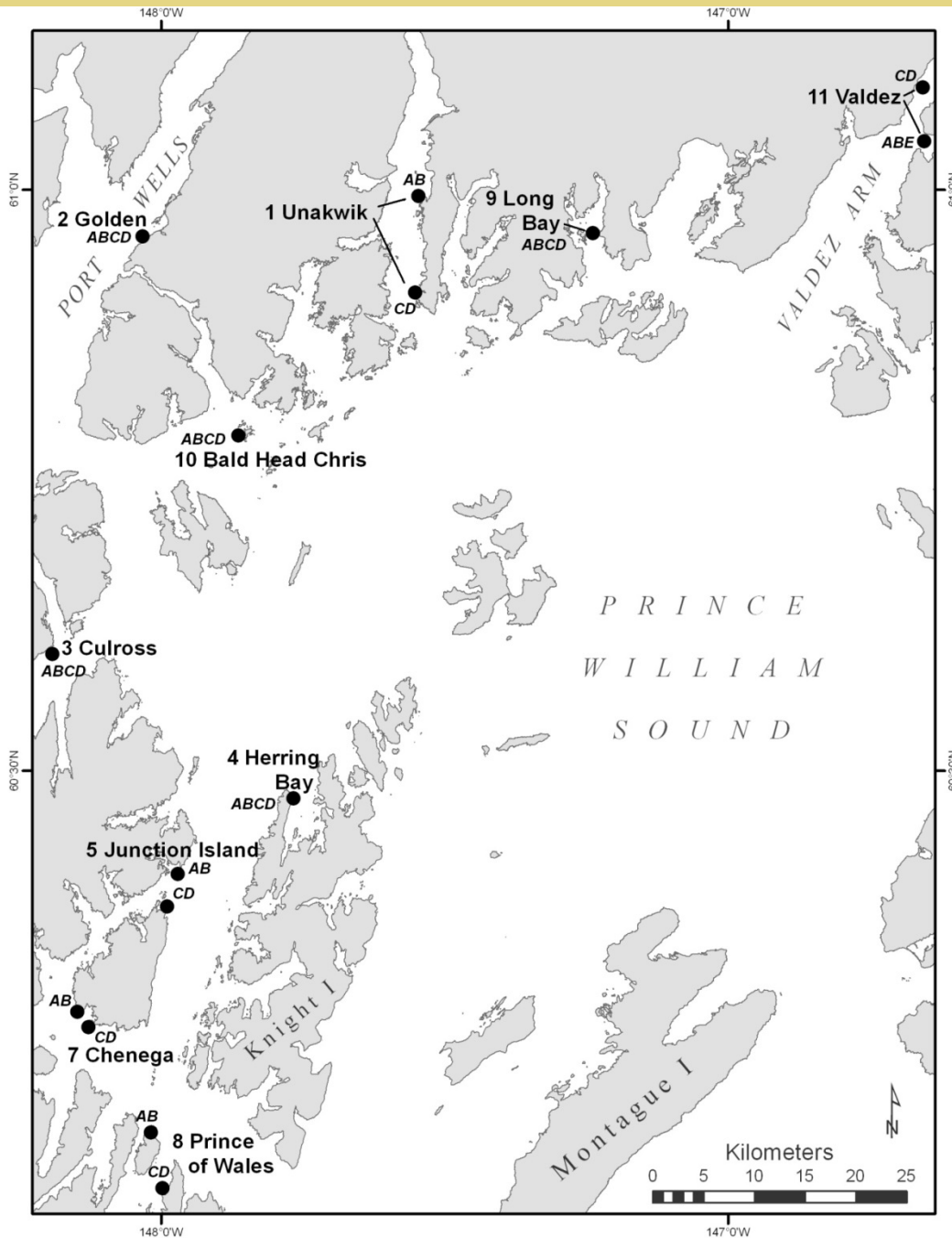
Spot Shrimp Selected Life History Traits

- Life span of seven to ten years
- Sedentary
 - Susceptible to localized depletion
- Protandrous hermaphrodites
 - Begin life as males
 - Become female later in life at larger size (~35 mm carapace length)



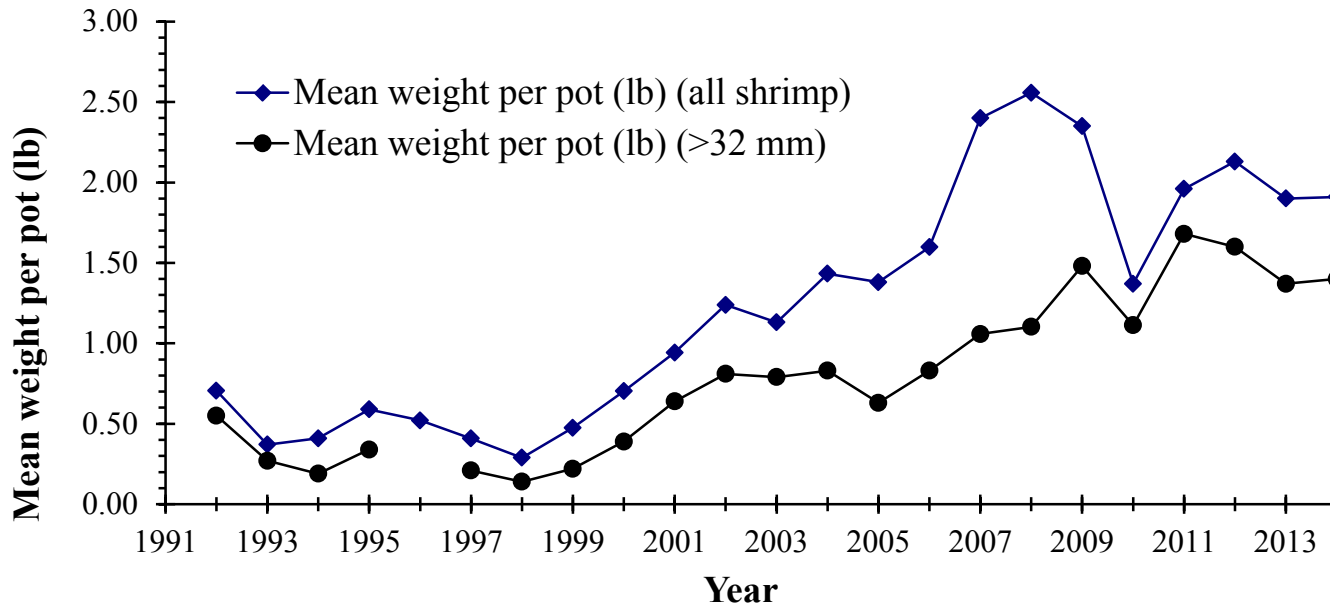
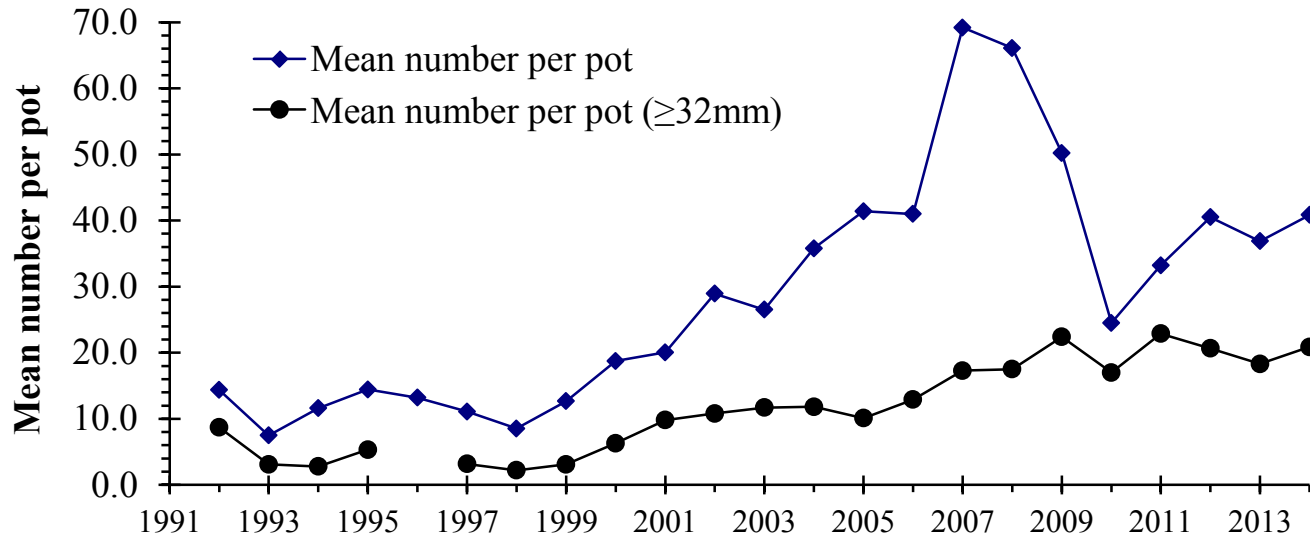
PWS Spot Shrimp Survey



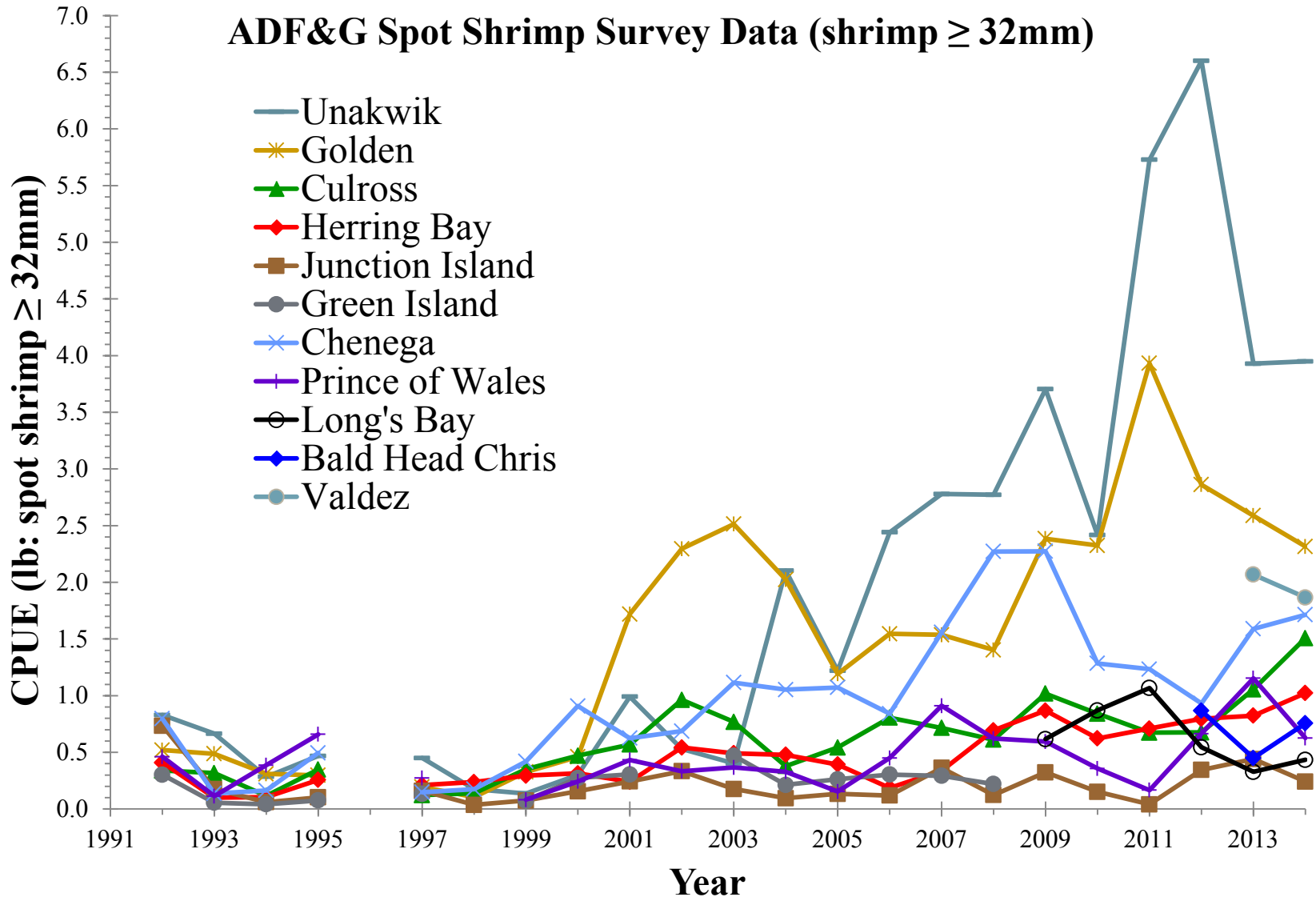


PWS ADF&G Spot Shrimp Survey Site Locations

PWS Spot Shrimp Survey Results



PWS Spot Shrimp Survey Results



Guideline Harvest Level (GHL) Development

- Surplus Production Model
 - Relative survey abundance
 - Survey CPUE
 - Total catch weight
 - Previous year's harvest from commercial and noncommercial fisheries
- Model provides total allowable harvest (TAH) and GHLs for commercial (40%) and noncommercial fisheries (60%)

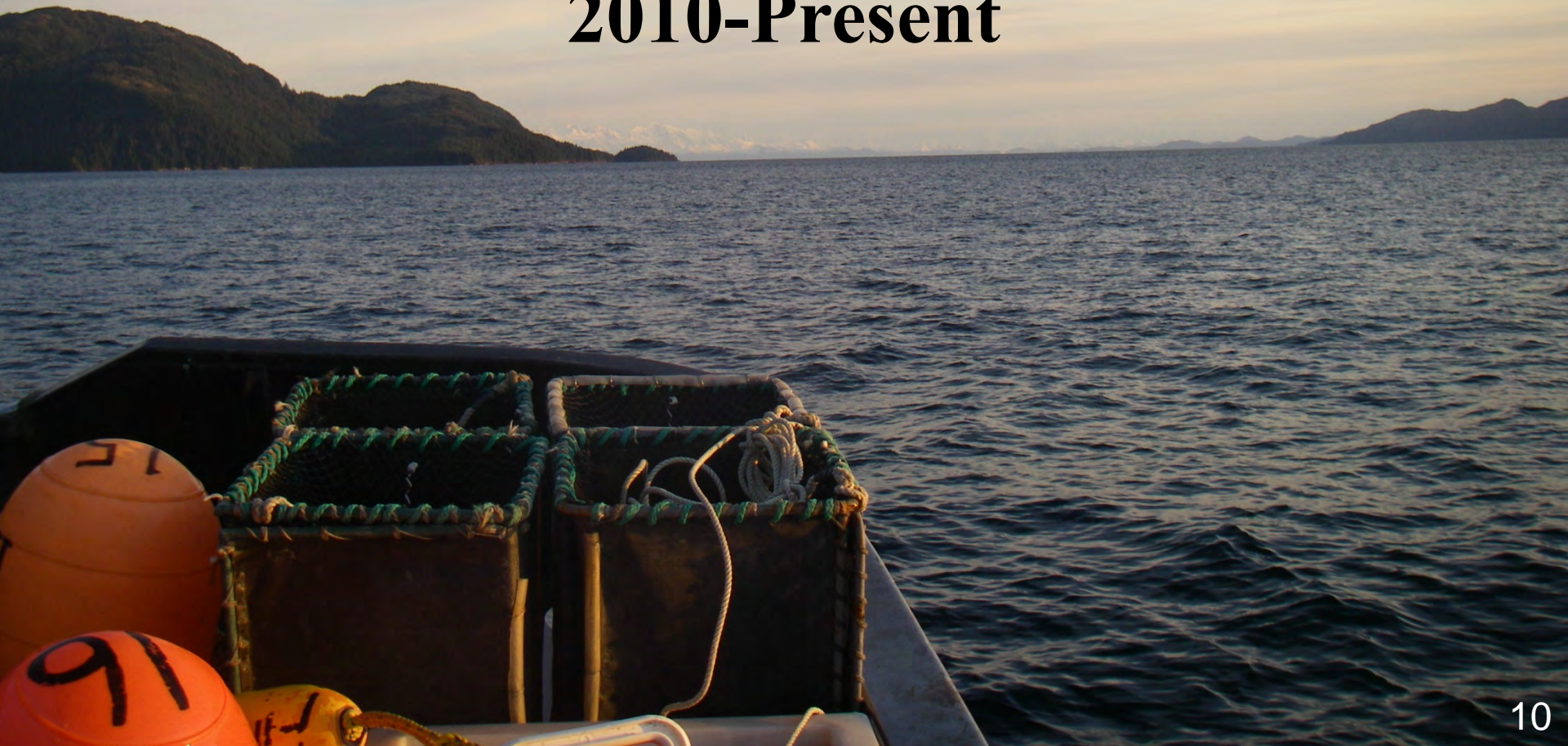
2015 Shrimp Pot Season

- Total Allowable Harvest: 167,000 lb
- Commercial fishery: 67,000 lb
- Noncommercial fishery: 100,000 lb



PWS Commercial Shrimp Pot Fishery

**1960-1991
and
2010-Present**

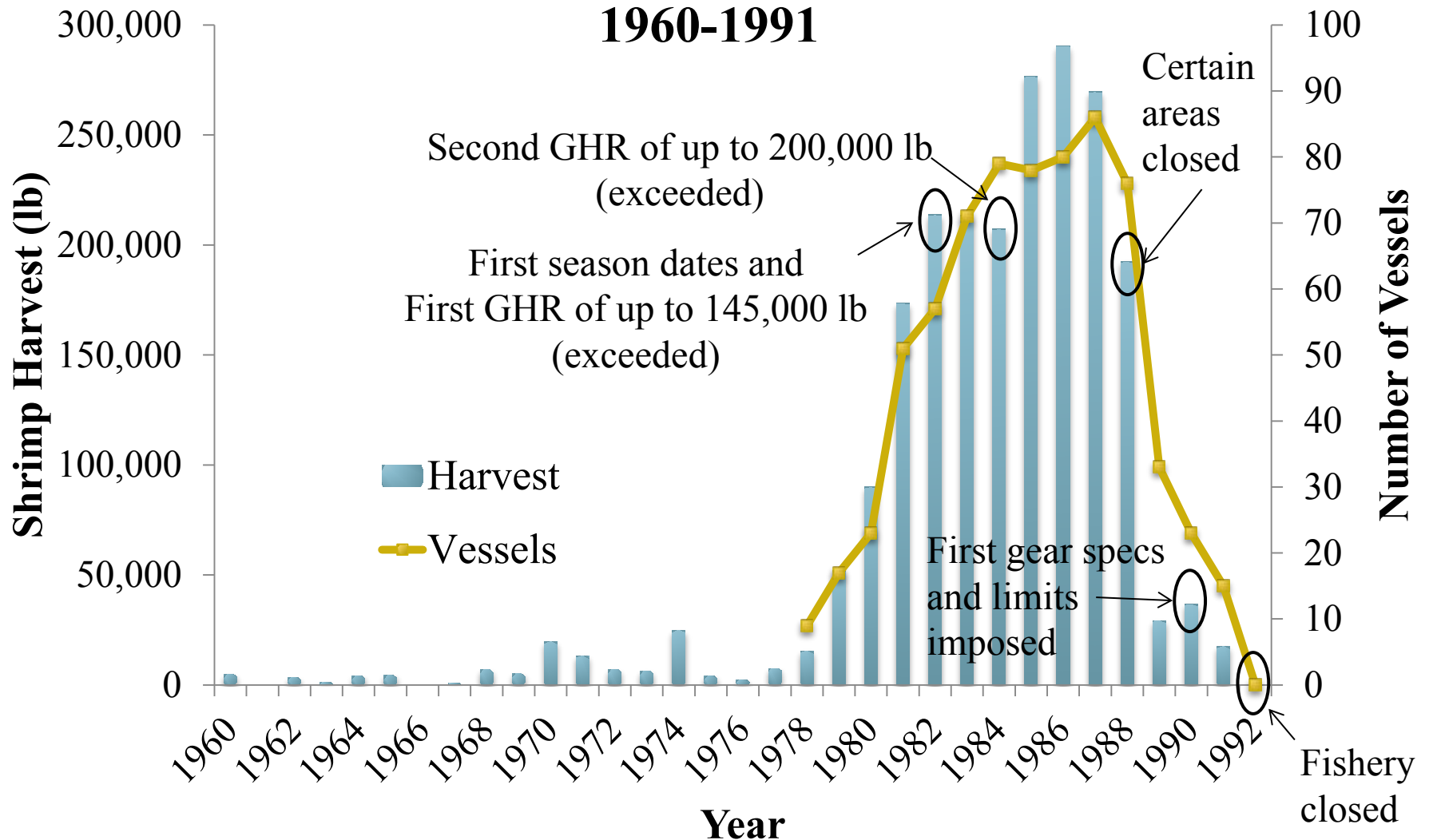


PWS Commercial Shrimp Pot Fishery 1960-1991



PWS Commercial Shrimp Pot Fishery

Harvest and Vessel Participation



PWS Commercial Shrimp Pot Fishery

Management Components

- 1) Total allowable harvest must be at least 110,000 lb for a commercial fishery to open
- 2) Allocation is 40% of total allowable harvest
- 3) Season dates April 15 through September 15
- 4) Registration deadline April 1
- 5) Fishery-dependent gear limits (100 pot maximum)
 - Set at between 20 and 50 pots since 2010

PWS Commercial Shrimp Pot Fishery

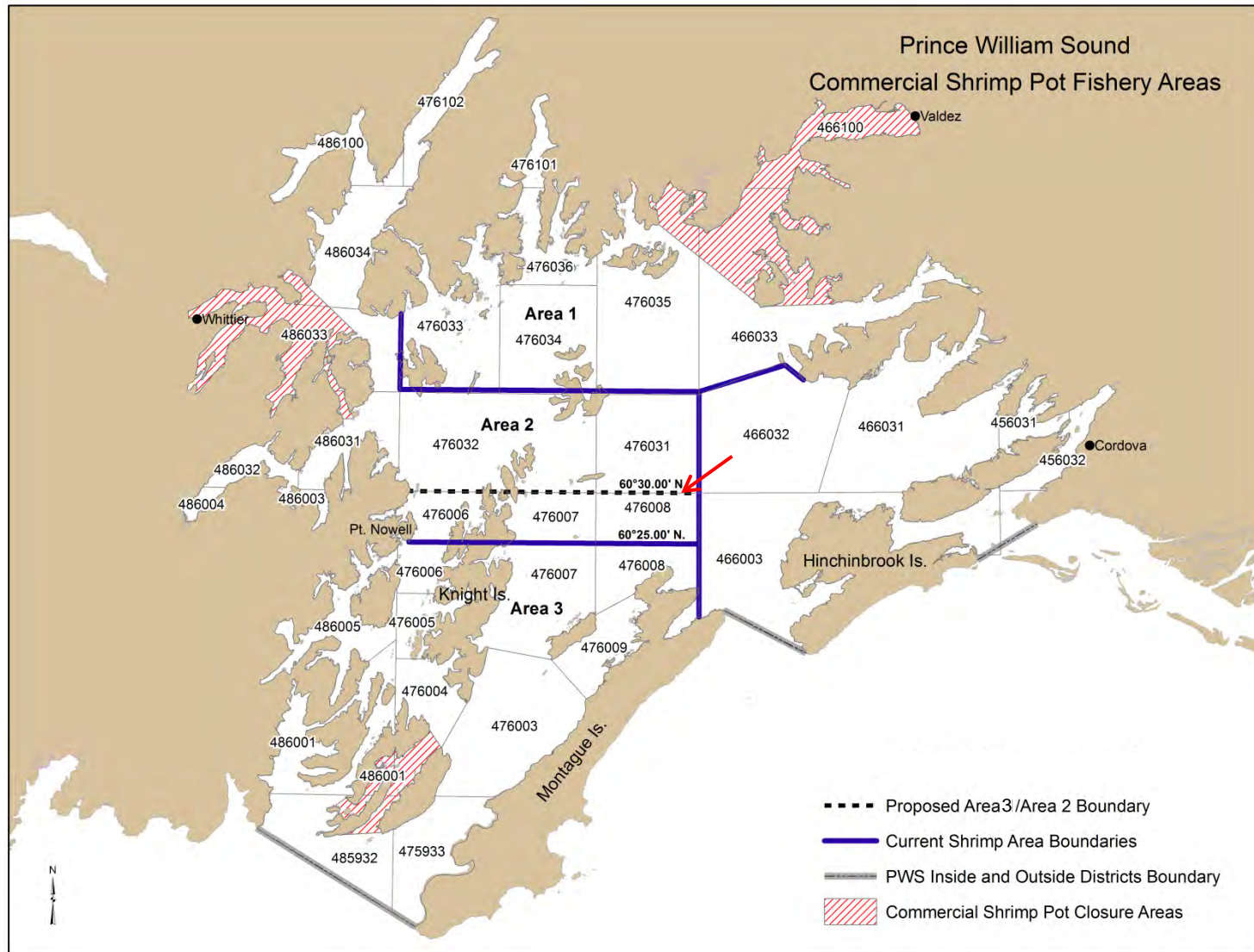
Current Management Components (continued)

- 6) Limited hours of gear operation
- 7) Stringent reporting requirements
- 8) Fishery rotates among three areas
- 9) Registration is exclusive
(changed from superexclusive in 2012)
- 10) No more than 25% of GHL from any one statistical area
(adopted in 2012)



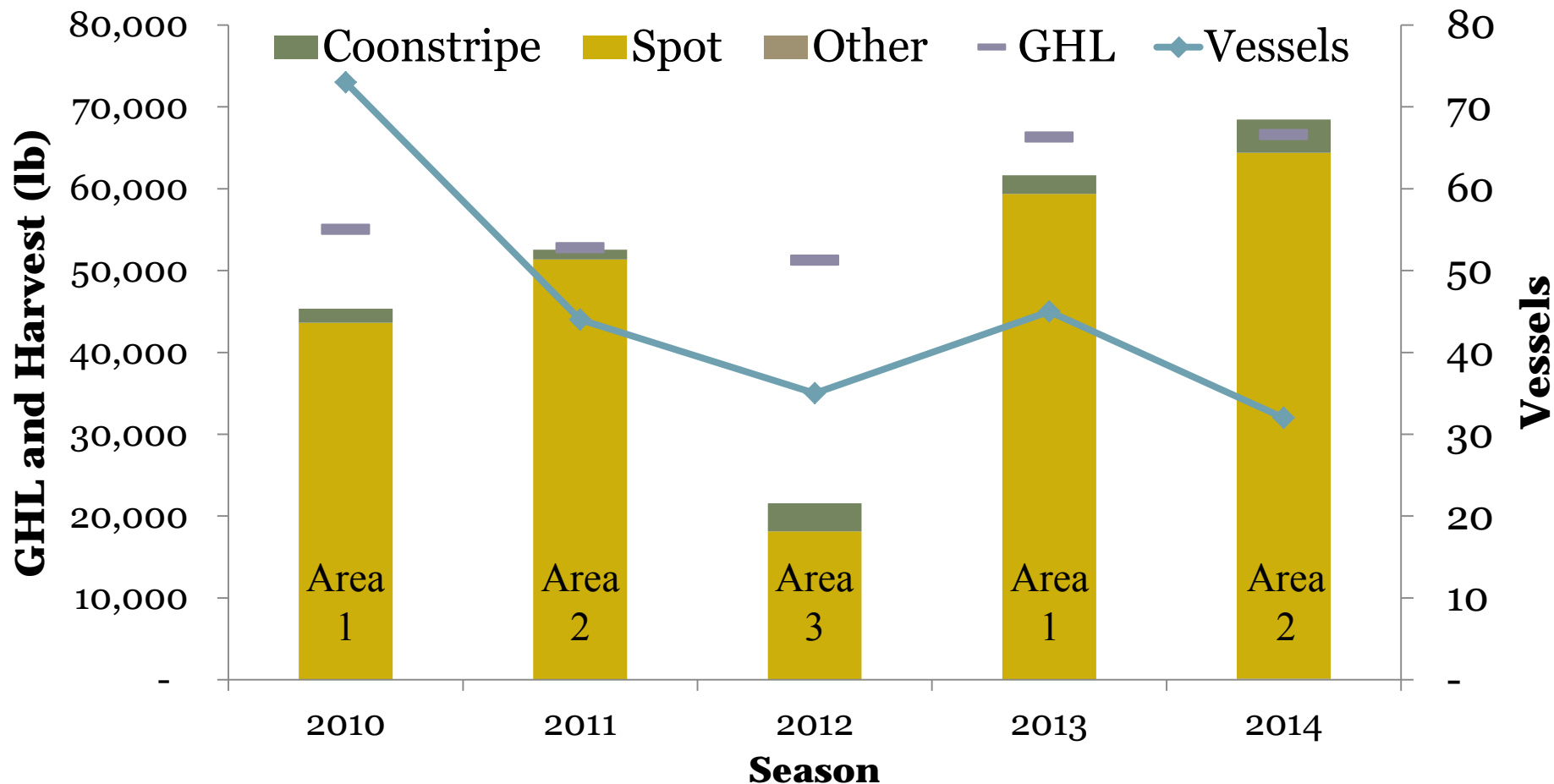
PWS Commercial Shrimp Pot Fishery

Area Boundaries and Statistical Areas



PWS Commercial Shrimp Pot Fishery

Harvest and Effort



PWS Commercial Shrimp Pot Fishery

Management 2010 through 2014

- Intensive inseason management
- Seasons start with short periods
- Mitigate user group conflict
- Effort is highest in early season then tapers off
- Good cooperation from fleet with reporting requirements



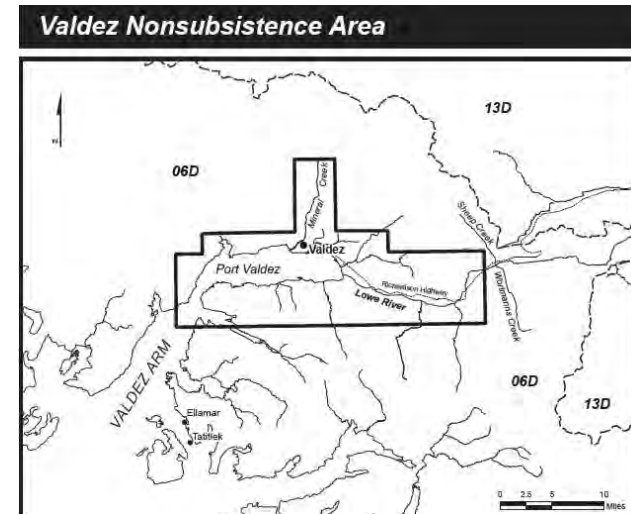
PWS Noncommercial Shrimp Pot Fishery



PWS Noncommercial Shrimp Pot Fishery

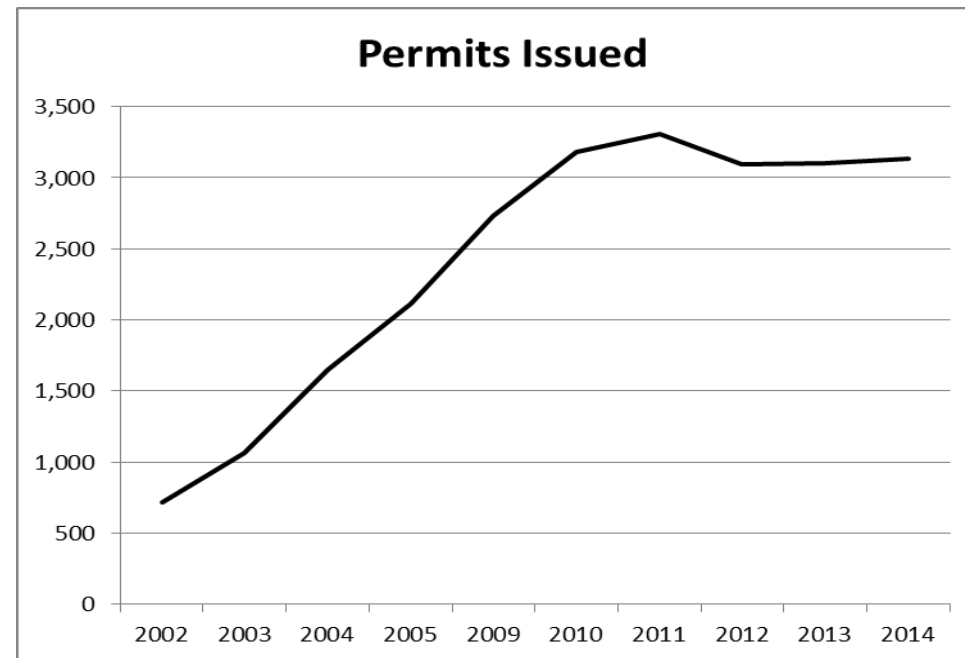
Management Components

- 1) Noncommercial fishery includes Subsistence, Sport, and Personal Use.
- 2) Sport license is required for sport and personal use, but not for subsistence
- 3) All saltwaters are open to shrimp fishing with the exception of subsistence use in the Valdez Nonsubsistence Area
- 4) There is no threshold that must be met in order for this fishery to take place.
- 5) Allocation is 60% of total allowable harvest

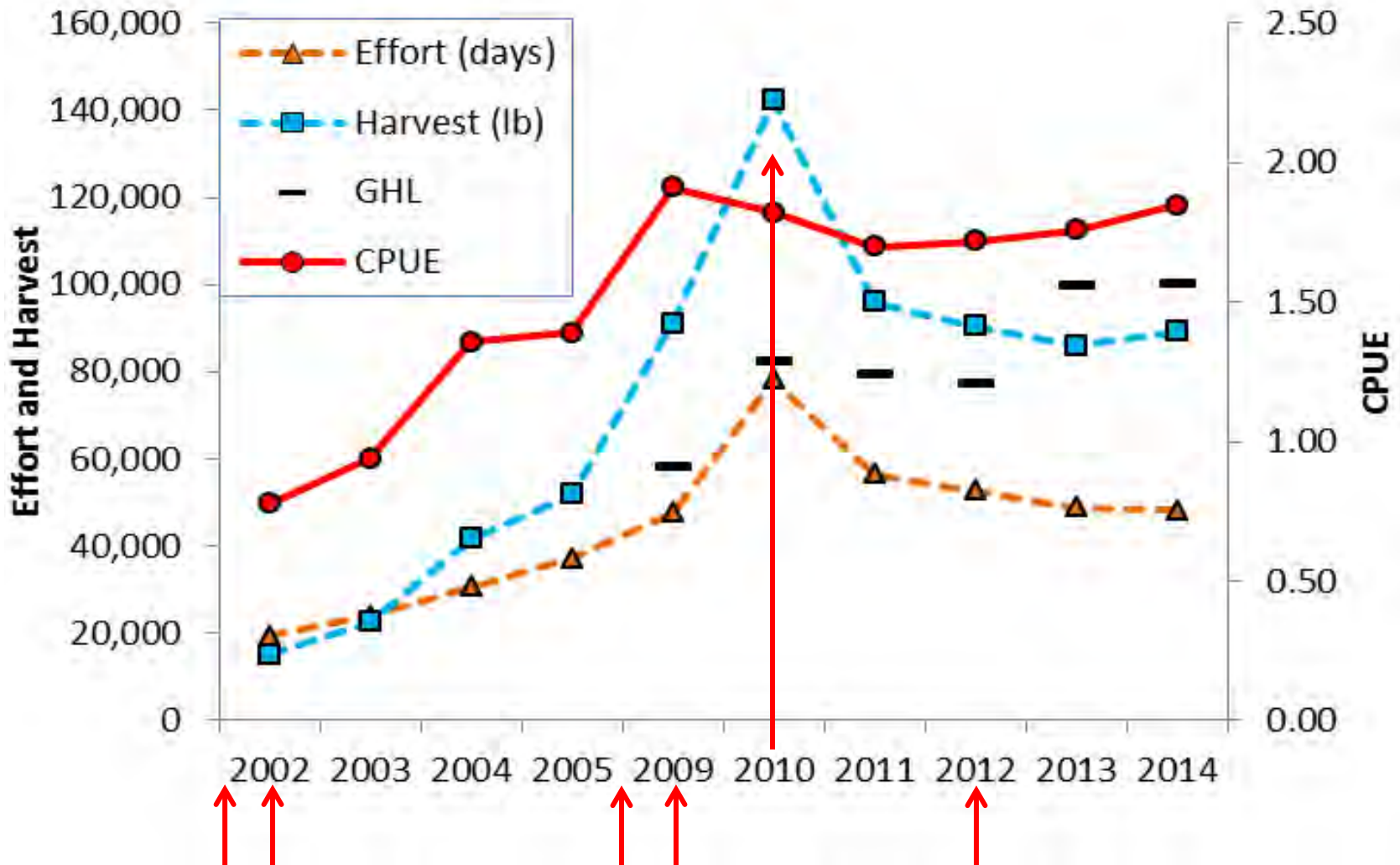


PWS Noncommercial Shrimp Pot Fishery Management Components (Continued)

- 6) Season dates April 15 through September 15
- 7) Pot limits set at 5 pots/person/vessel with no bag, possession, or annual harvest limit
- 8) Harvest/Effort tracked through Shrimp Permit/Recording form
~90% returns
- 9) No inseason management

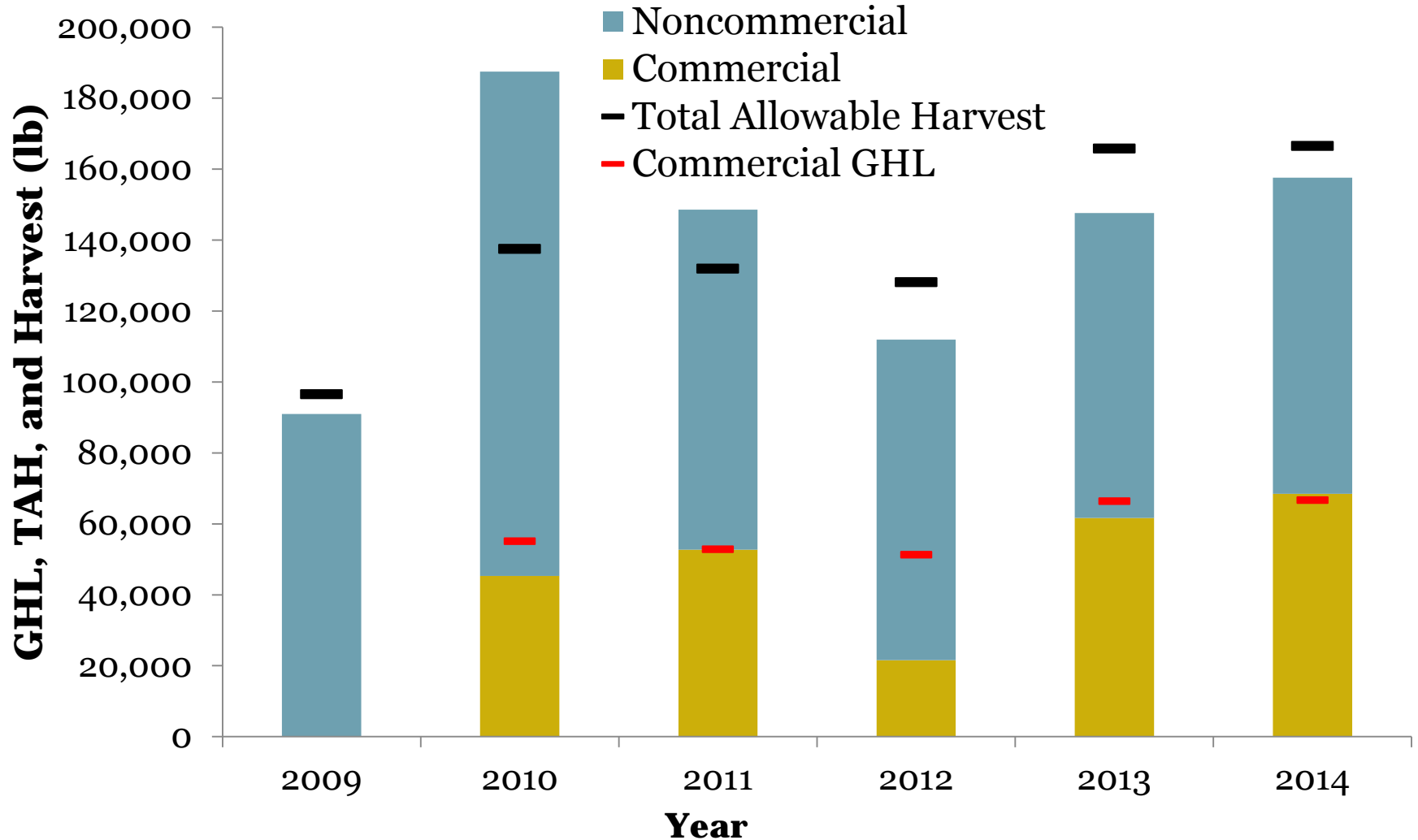


PWS Noncommercial Shrimp Pot Fishery



PWS Shrimp Pot Fisheries

Total Harvest 2009-2014



PWS Shrimp Pot Fisheries

2015 Proposals (15)

Noncommercial fisheries (5)

245, 246, 247, 248, and 249

Commercial fisheries (10)

250, 251, 253, 254, 255, 256, 257, 258, 259, and 260

Thank you for your time and attention.

Questions?

