

UPPER COOK INLET

Commercial Fisheries Management Report



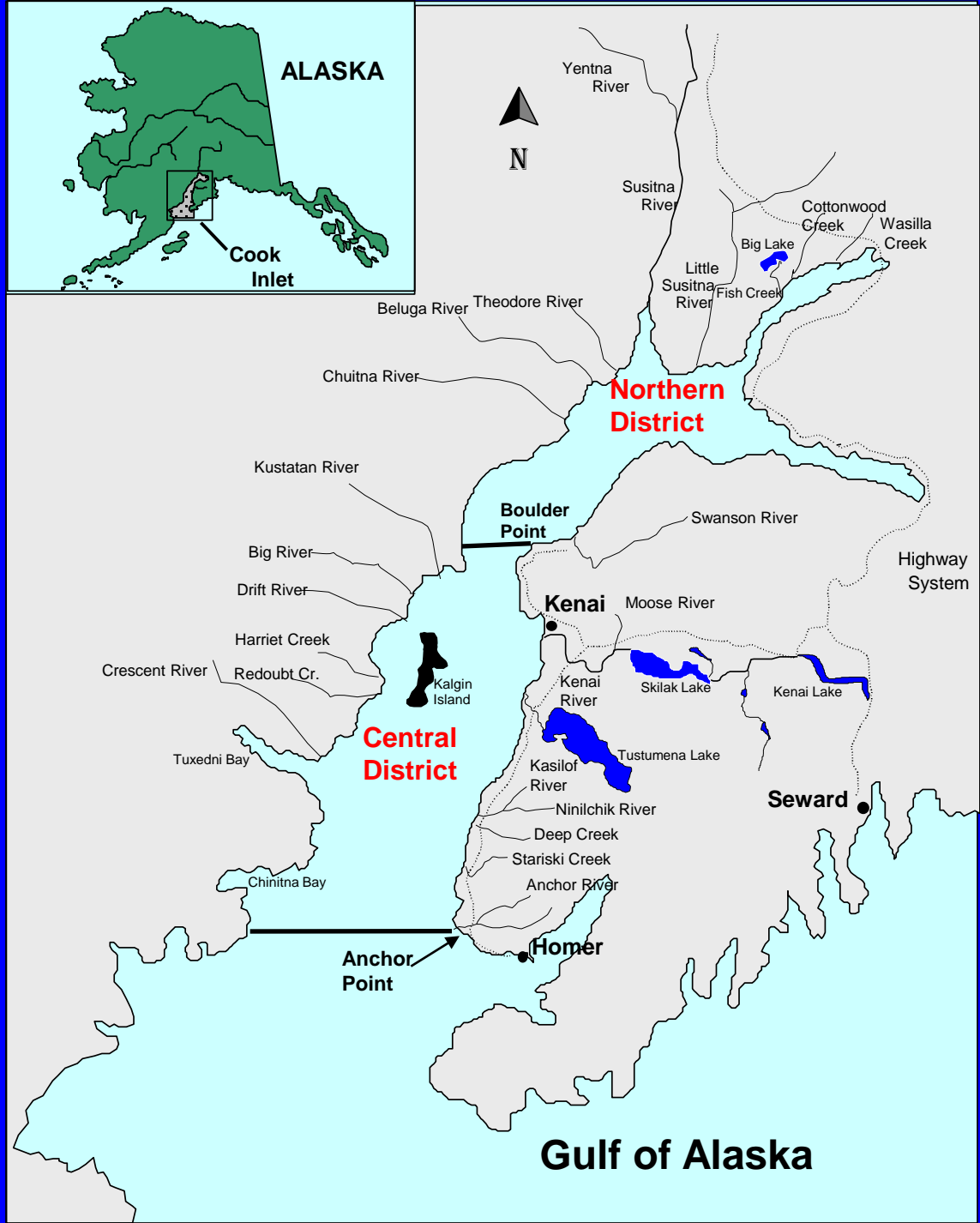
Division of Commercial Fisheries

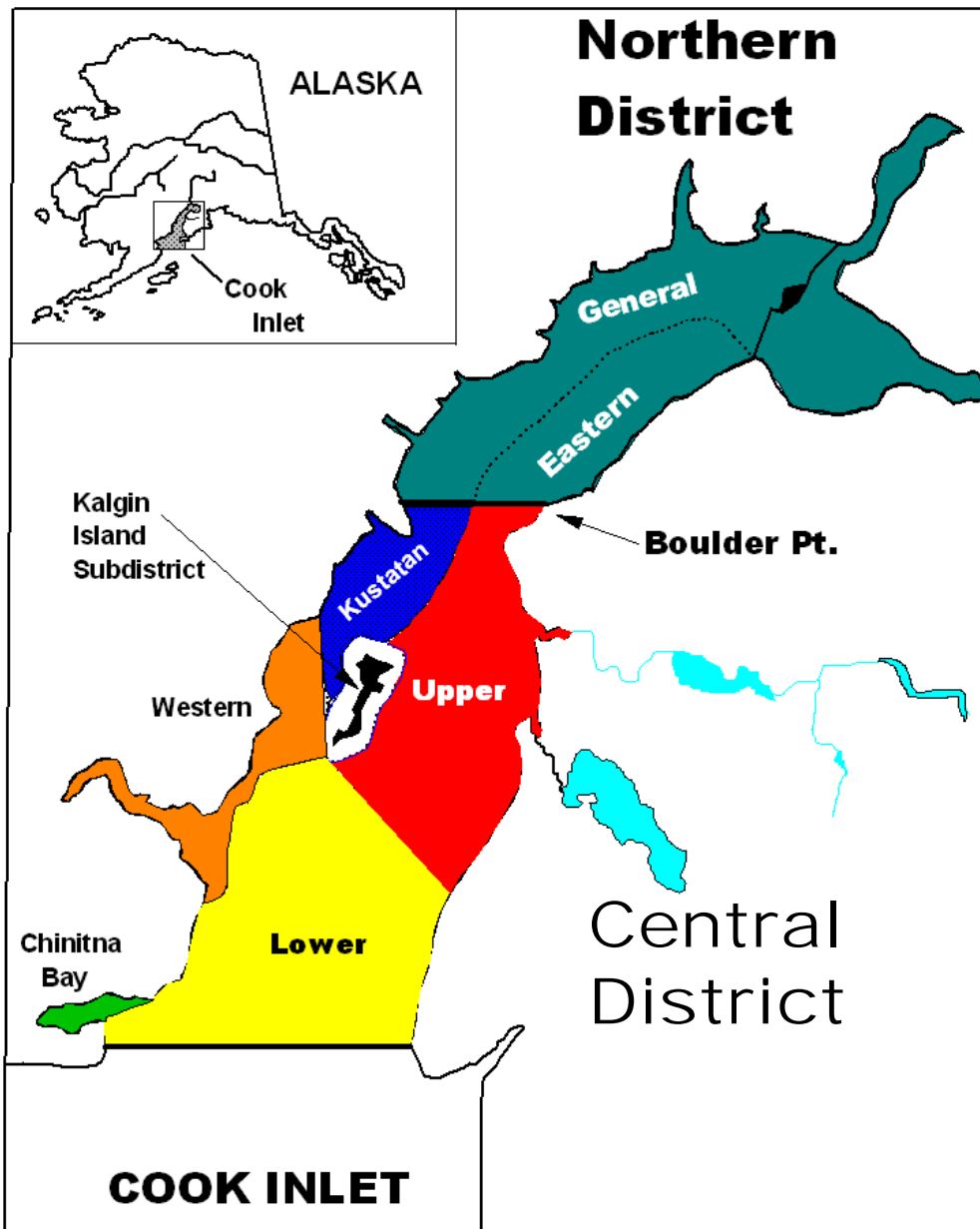
Report to the Alaska Board of Fisheries

RC 4 Oral Tab 2

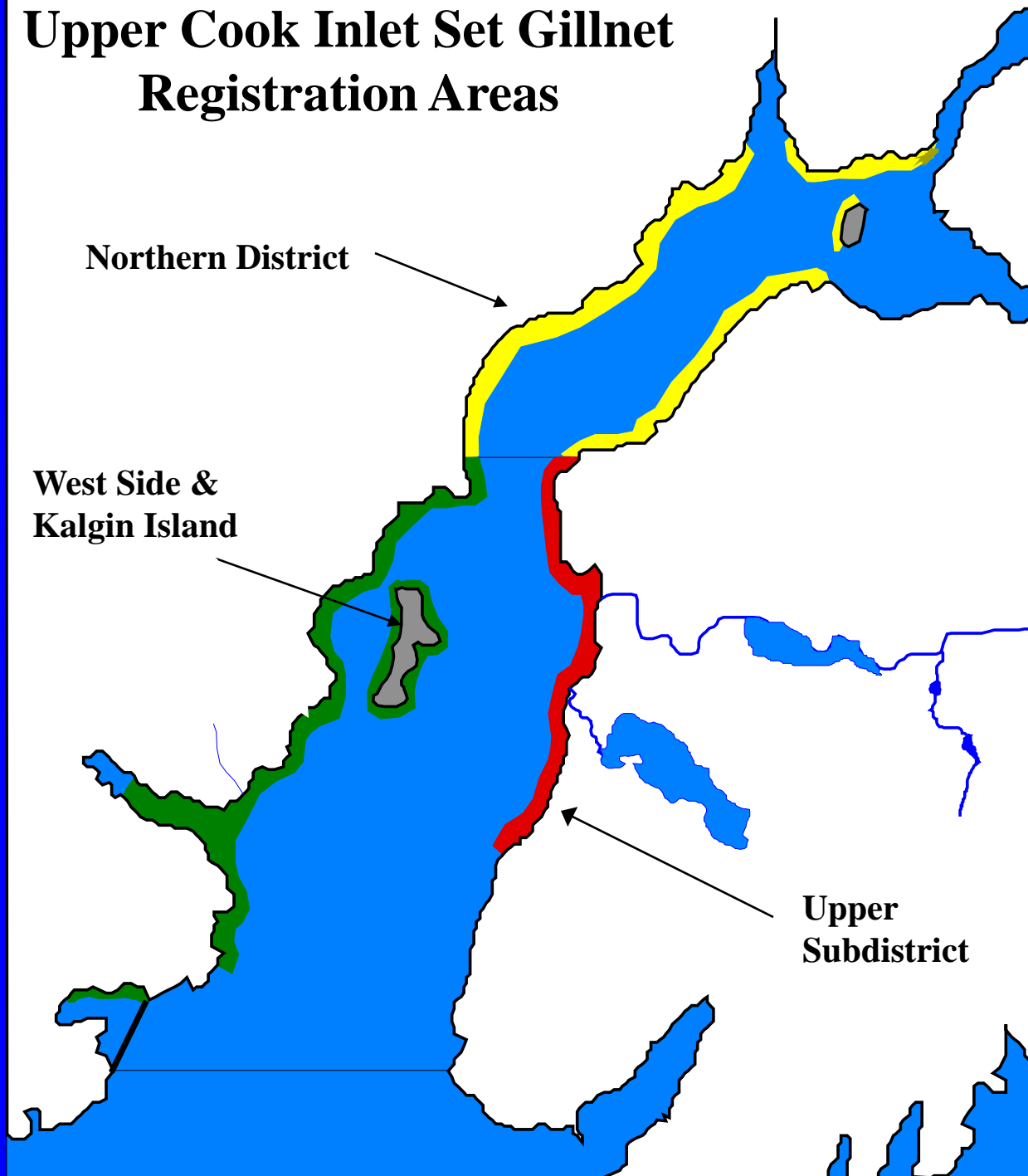
February 2011

by Pat Shields





Upper Cook Inlet Set Gillnet Registration Areas

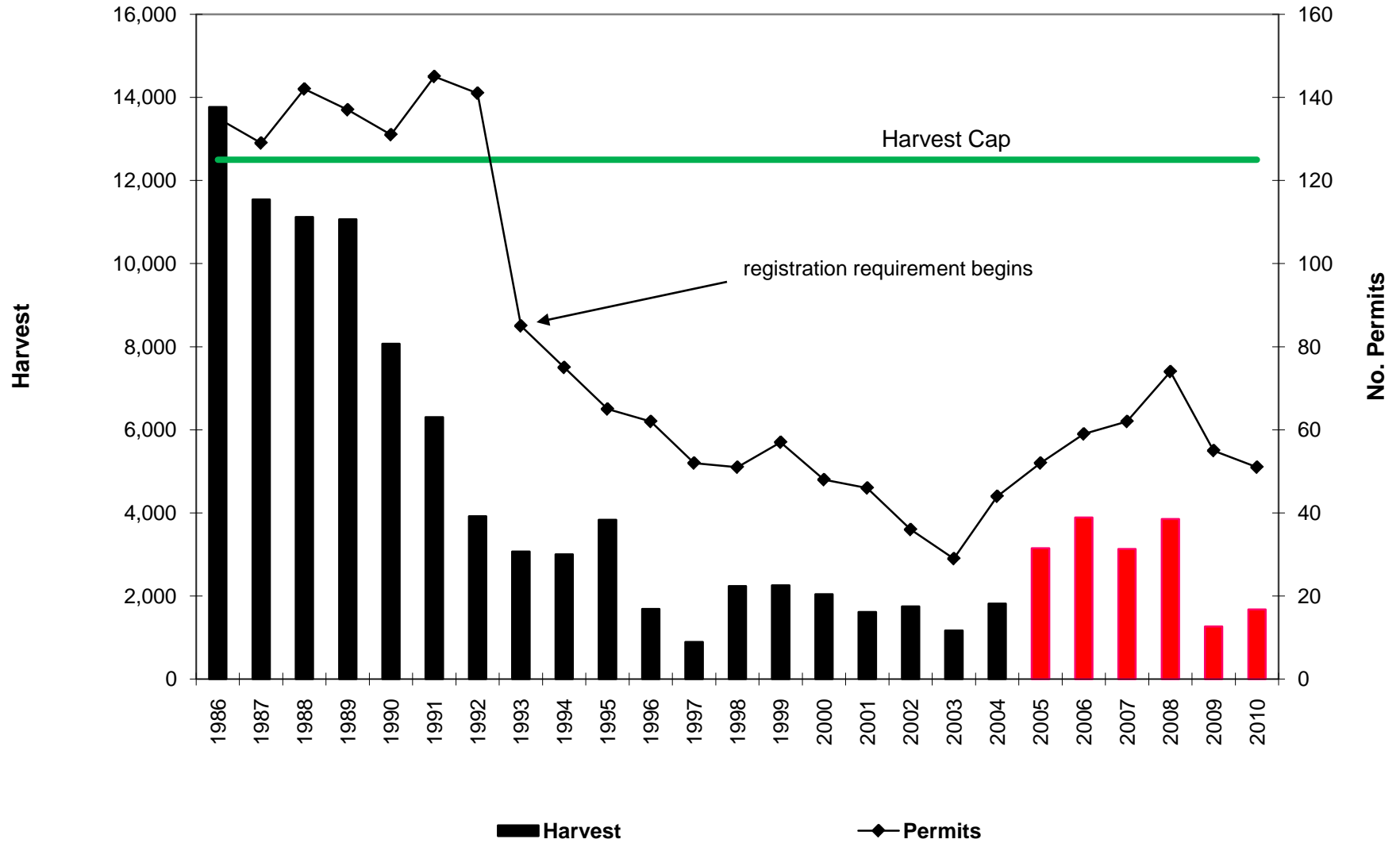


Northern District King Salmon Management Plan

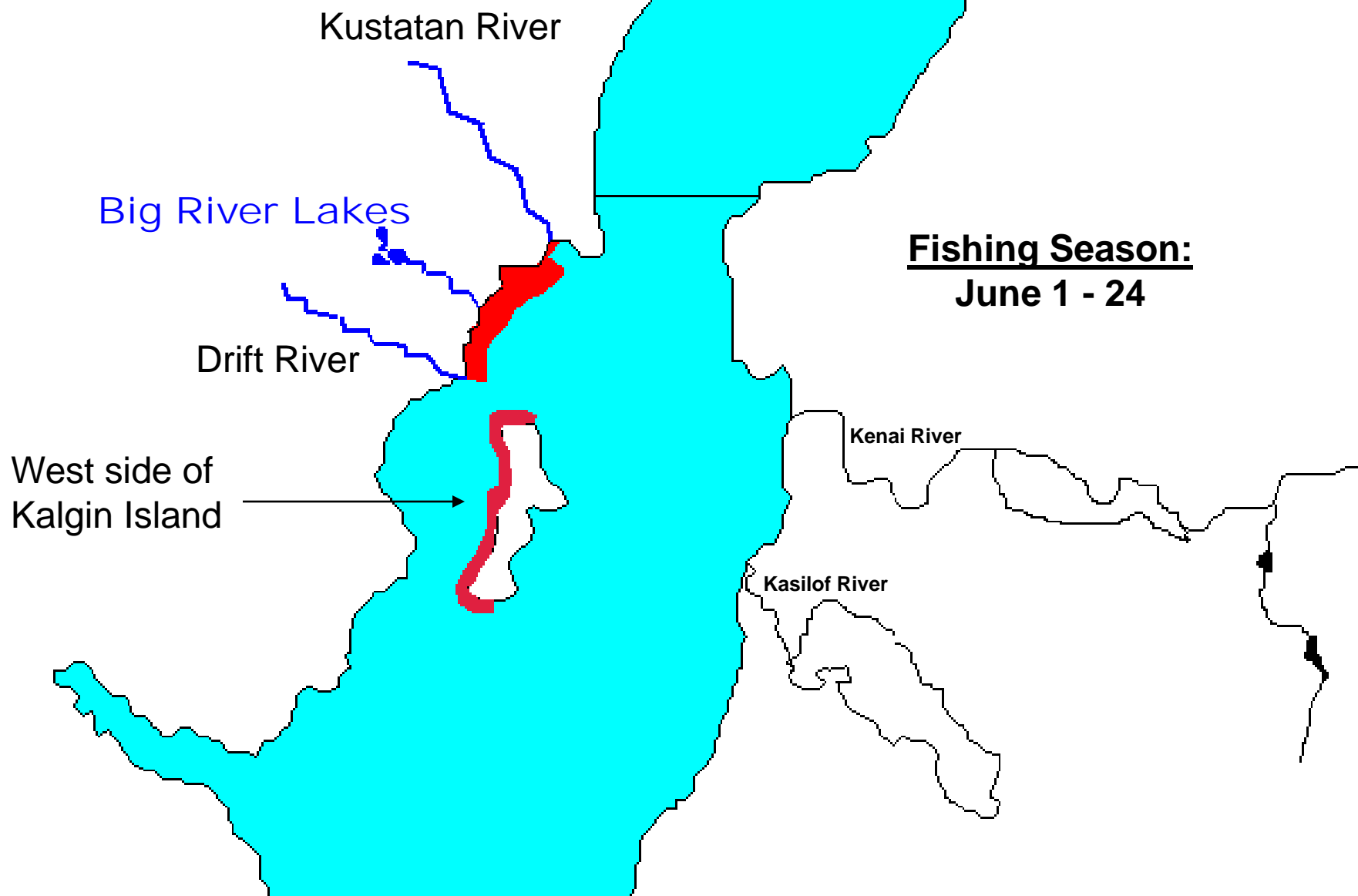
Area Open 2nd Period Only



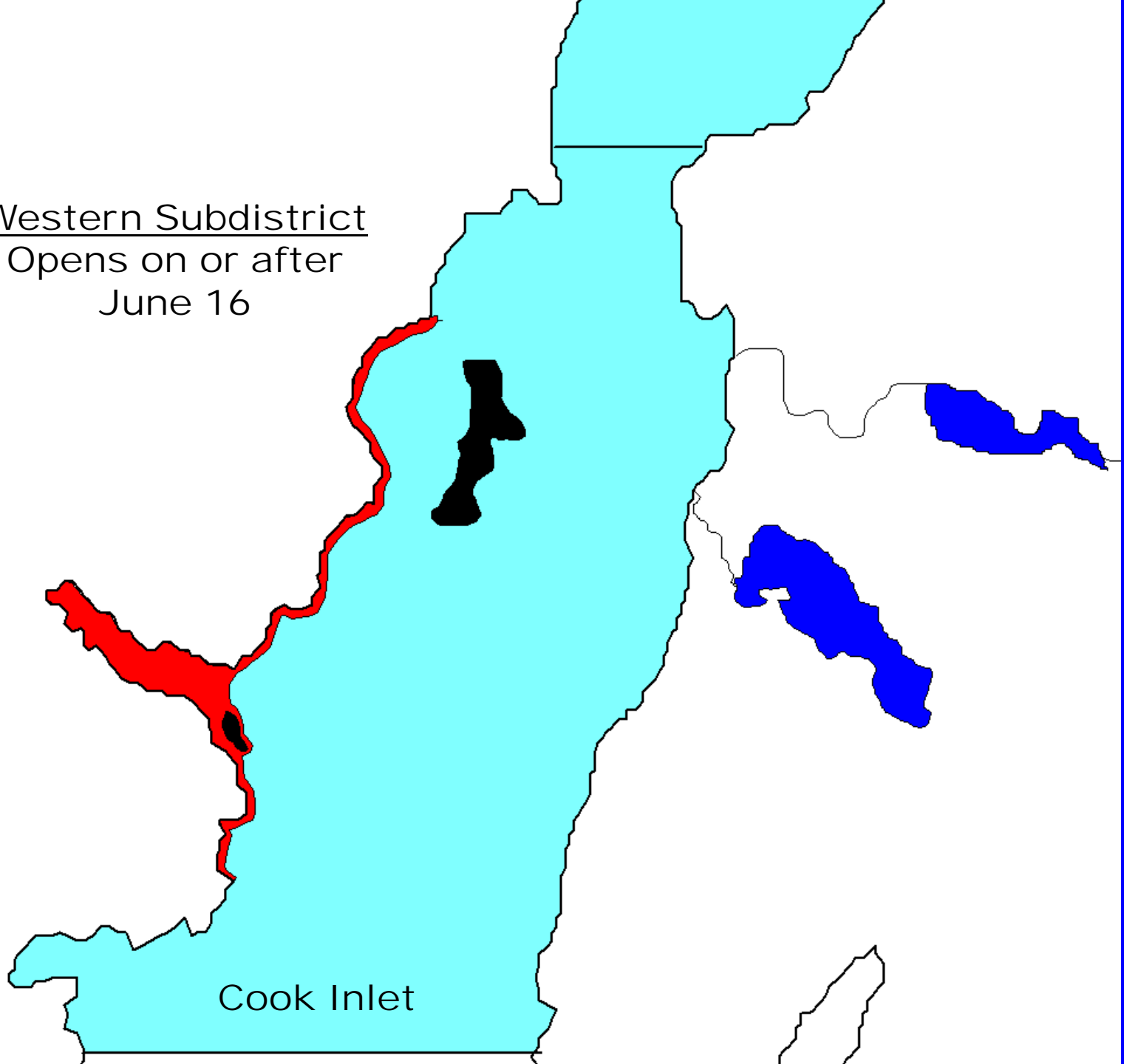
Northern District Directed King Salmon Harvest



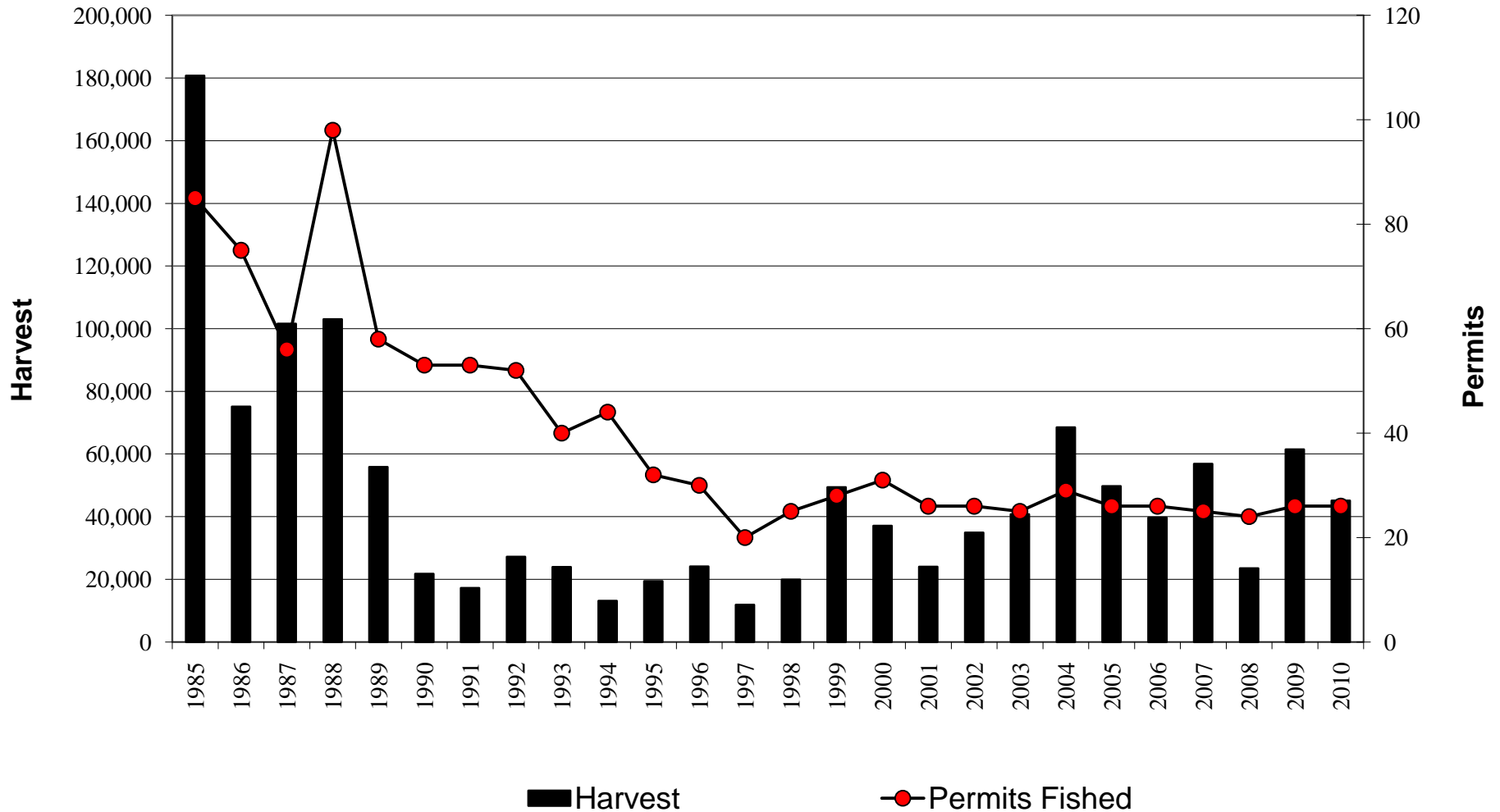
Big River Sockeye Salmon Fishery



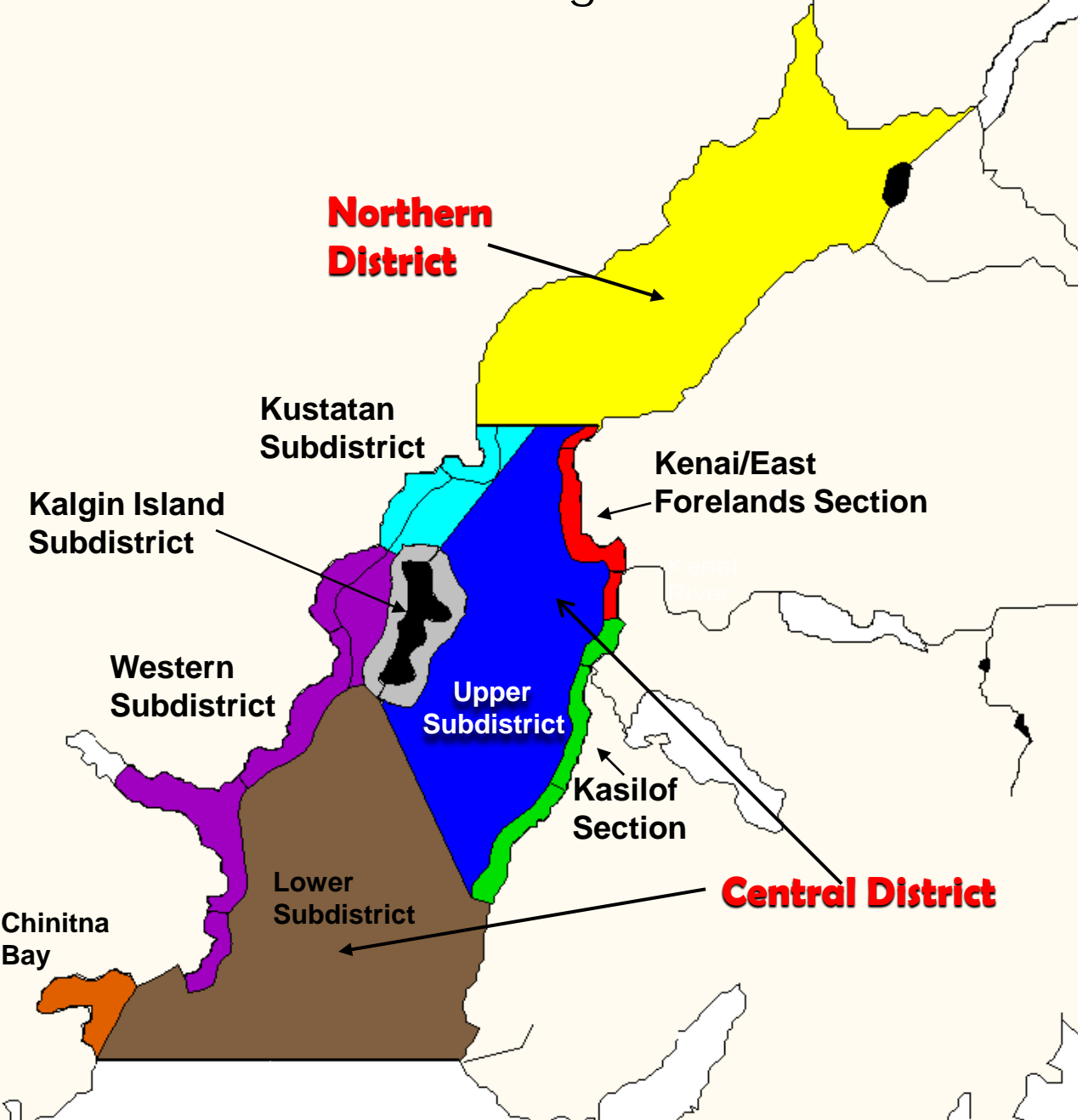
Western Subdistrict
Opens on or after
June 16



Western Subdistrict Sockeye Salmon Harvest



UCI Commercial Fishing Districts



Commercial Fishing Opening Dates (earliest date possible)

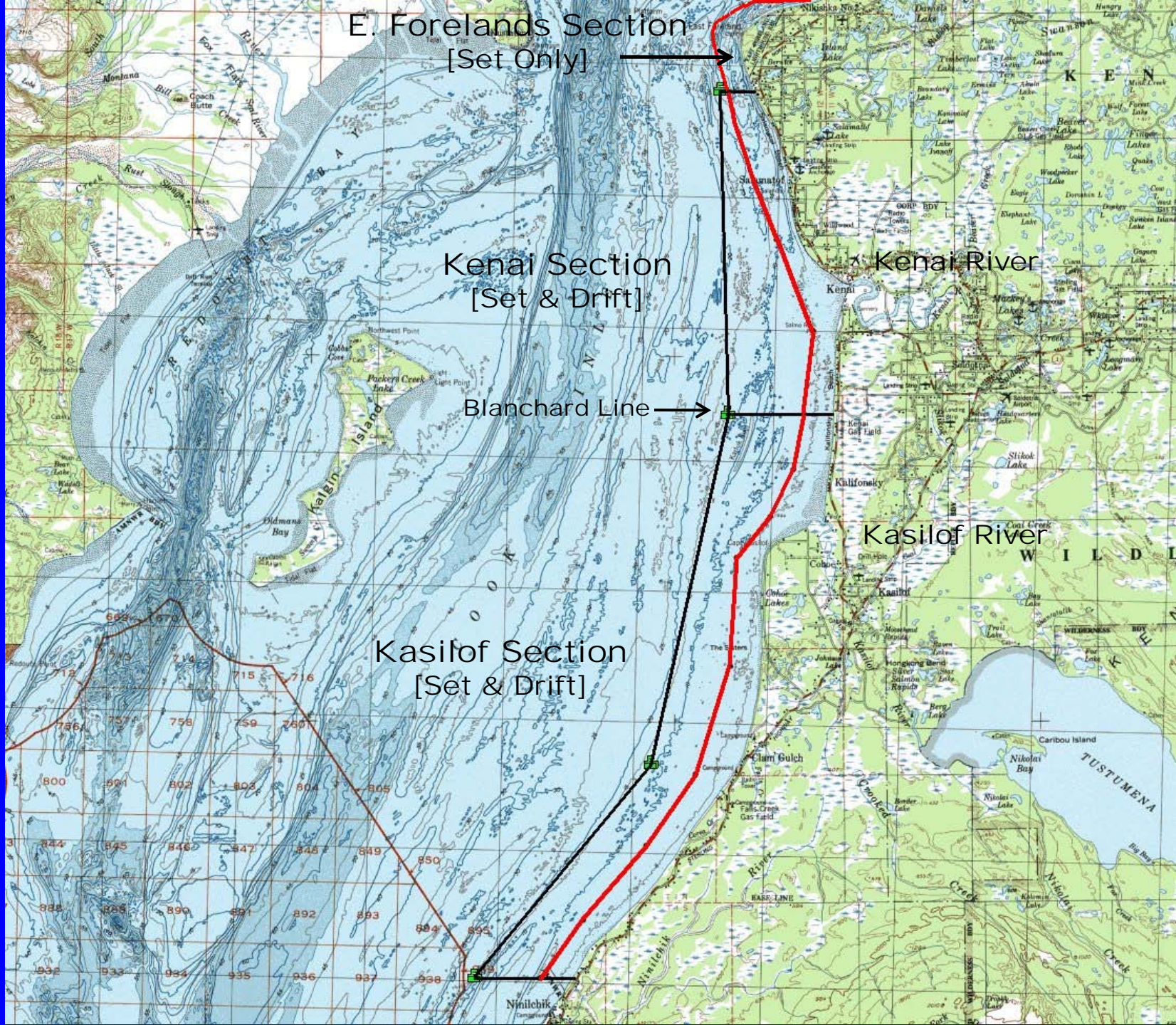
- Western Subdistrict: Jun 16
- Drift Gillnet: June 19
- Kasilof Section (set): June 20
- All others: June 25
- Kenai – E. Forelands: July 8

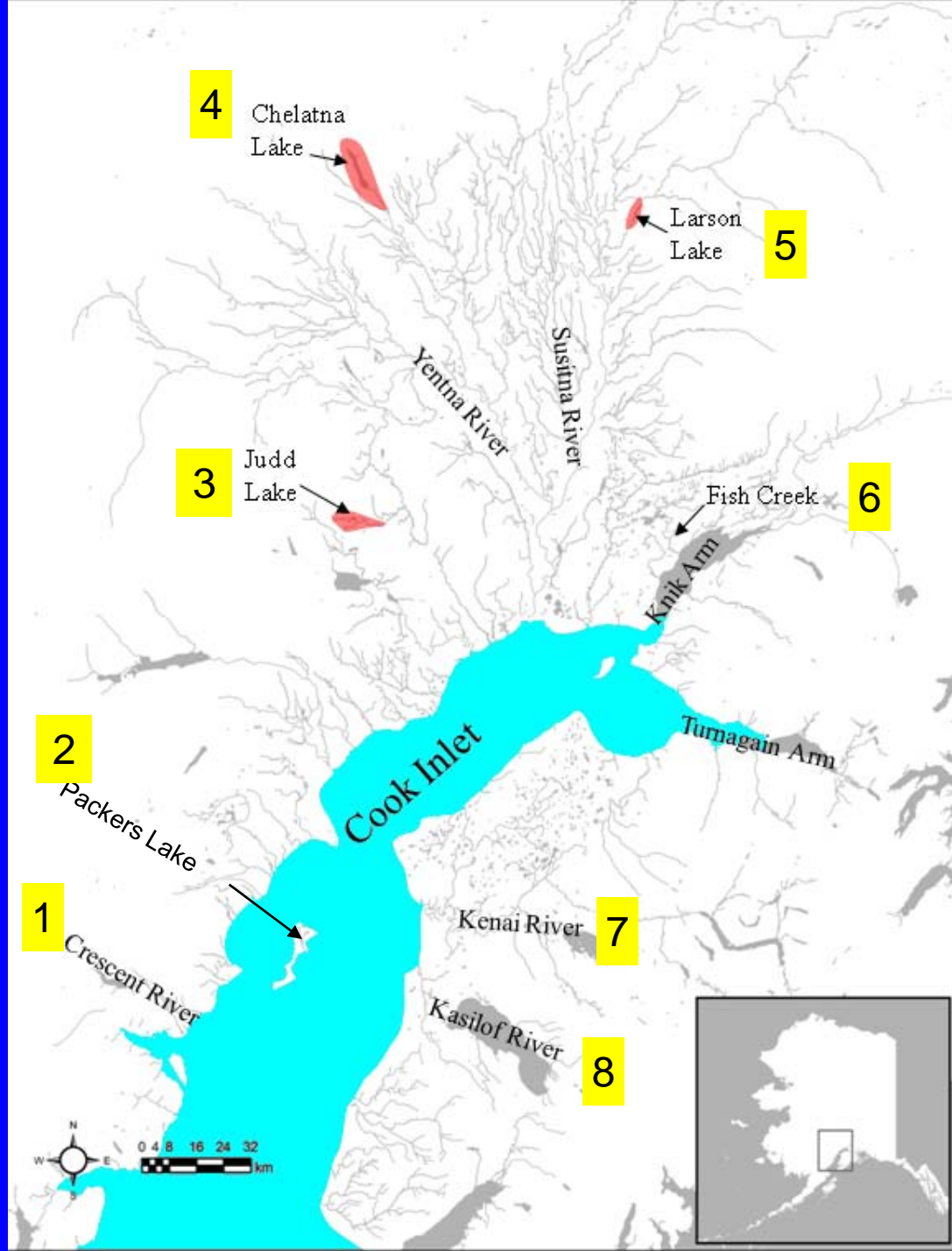
E. Forelands Section
[Set Only]

Kenai Section
[Set & Drift]

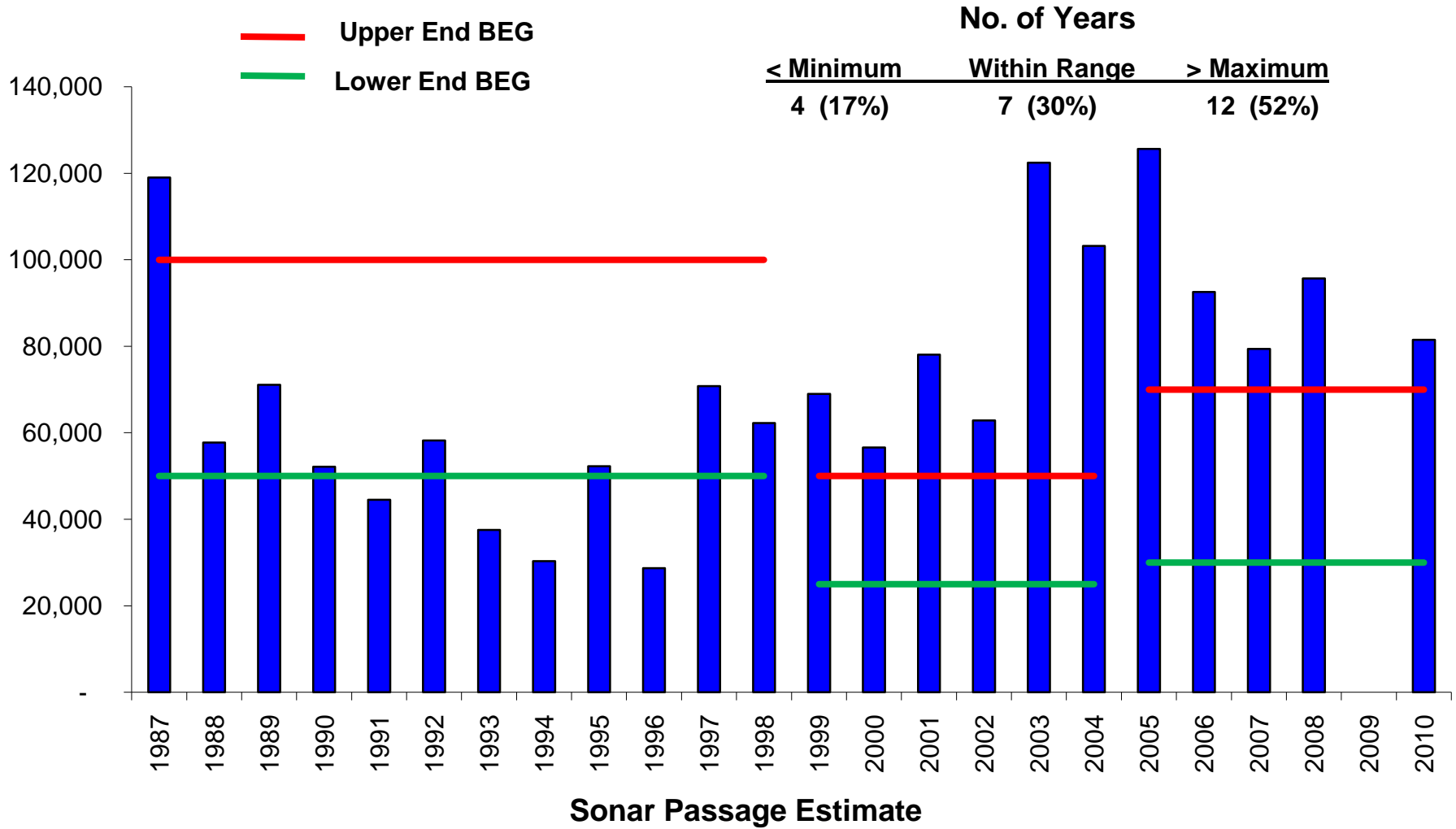
Blanchard Line

Kasilof Section
[Set & Drift]

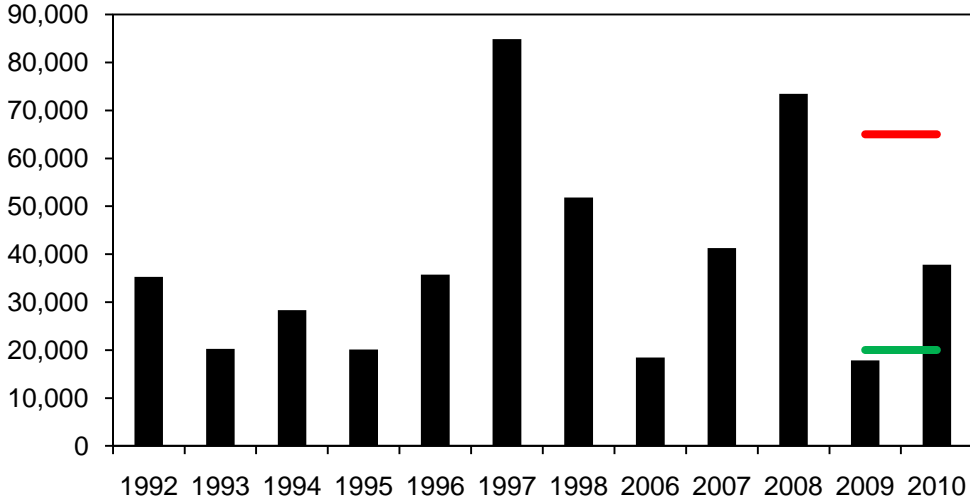




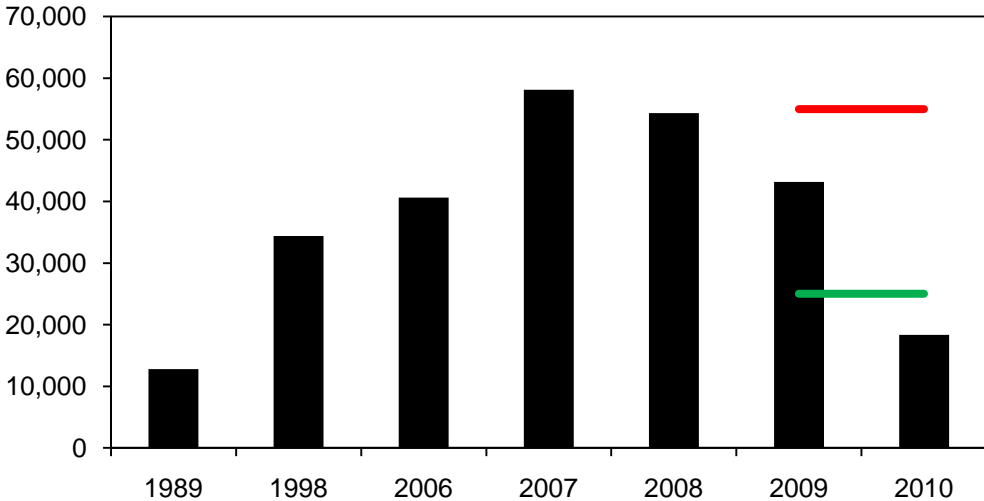
Crescent River Sockeye Salmon



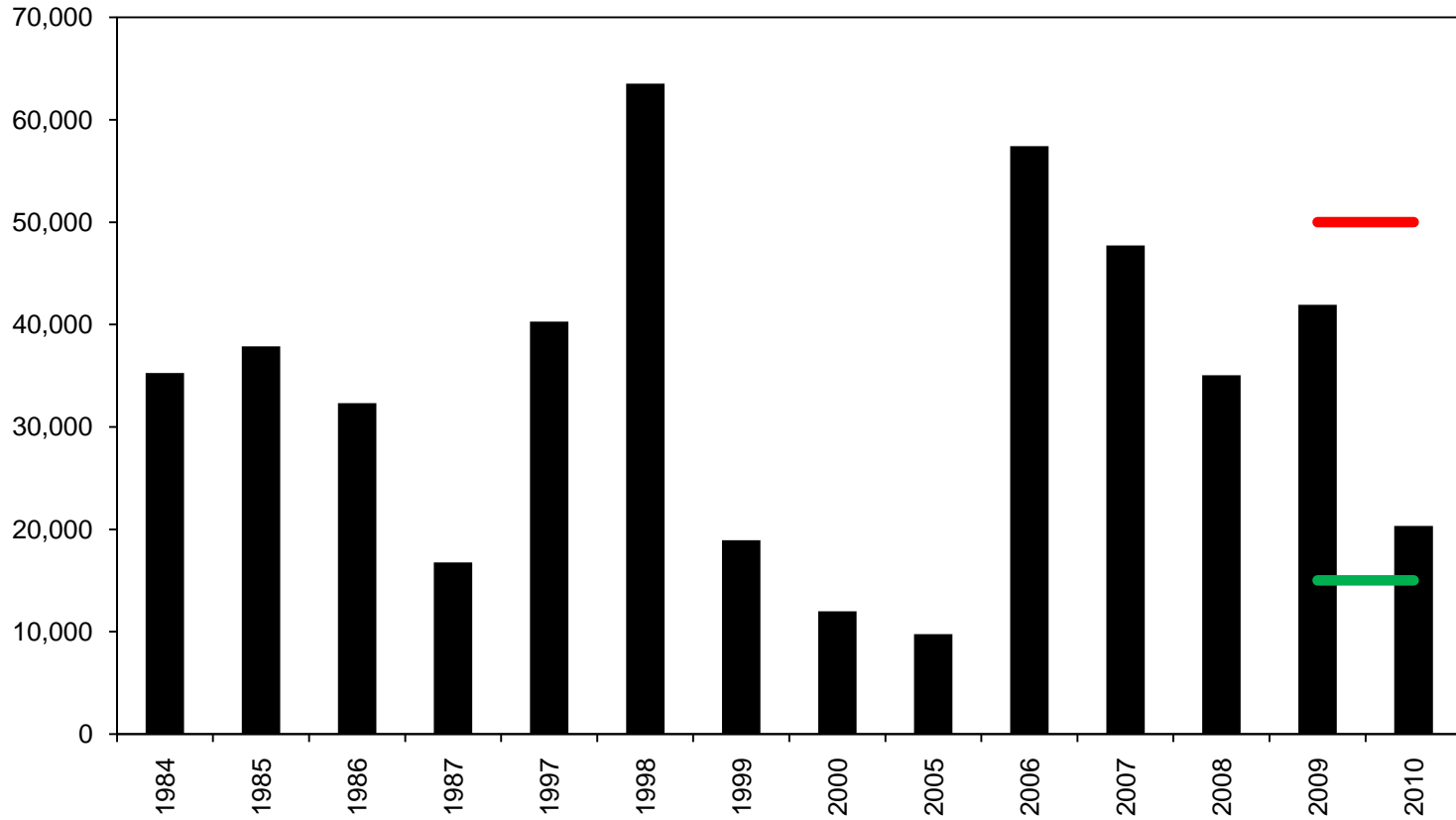
Chelatna Lake



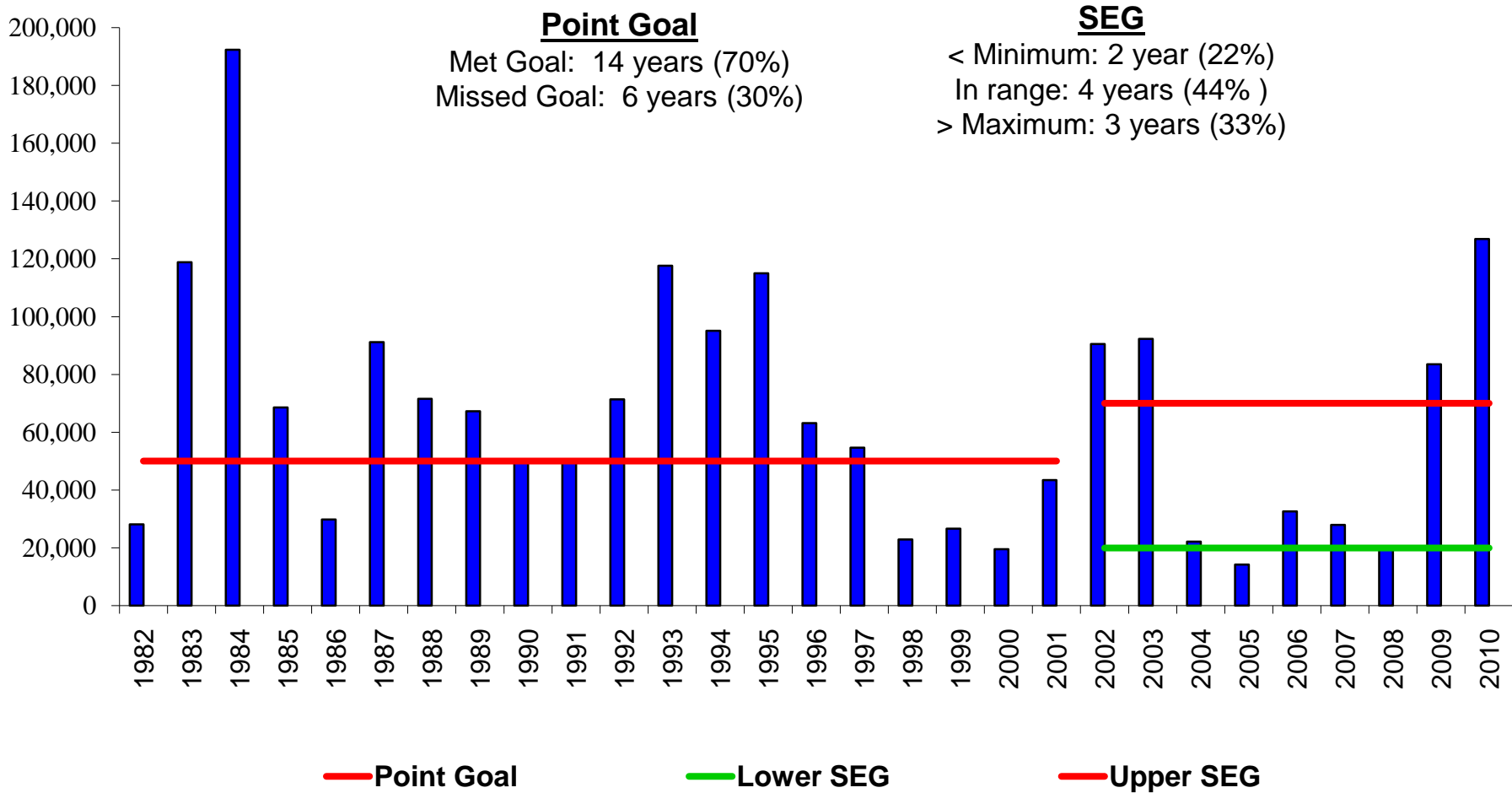
Judd Lake



Larson Lake



Fish Creek Sockeye Salmon

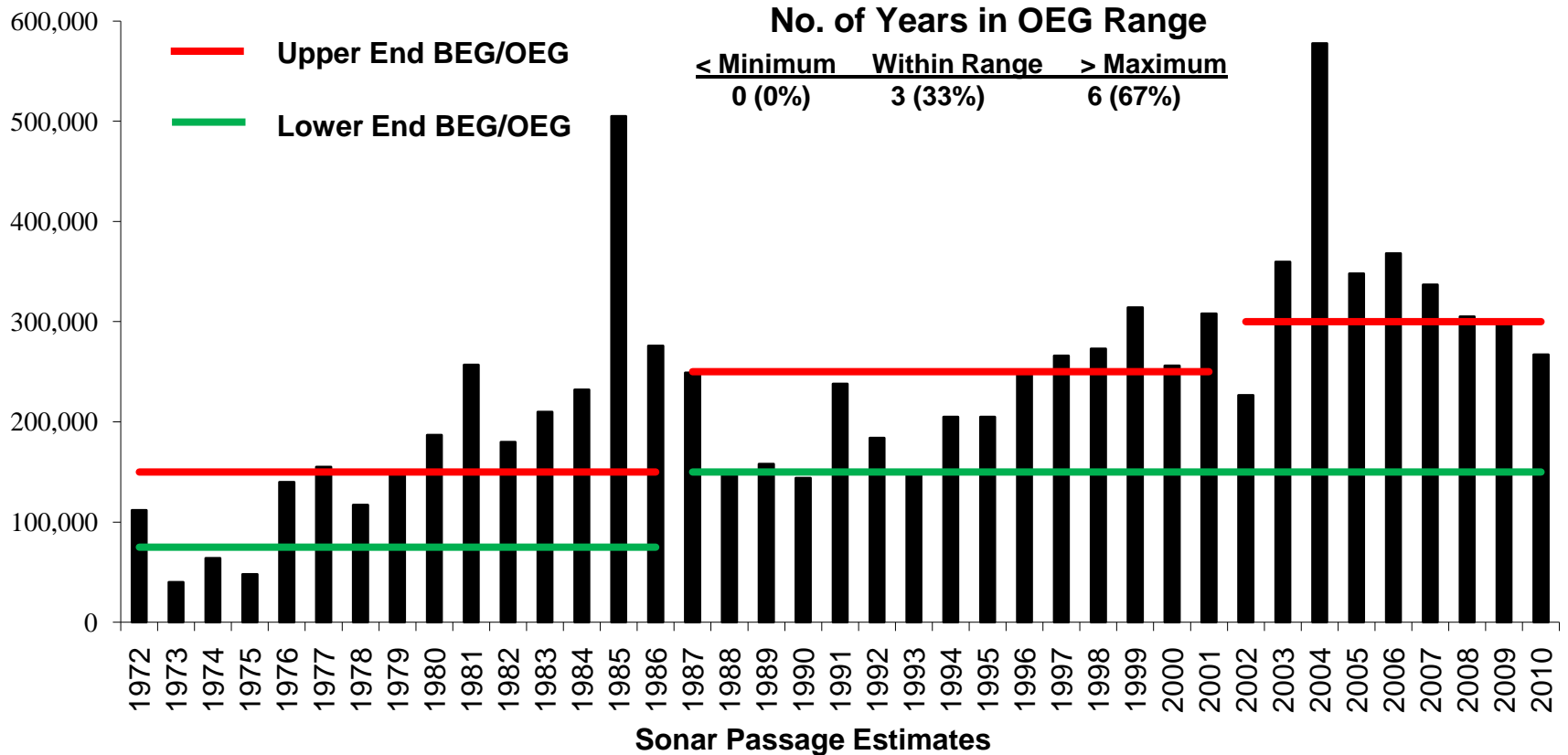


Kasilof River Salmon Management Plan

This plan is in effect from the beginning of the season through July 7 and governs harvest of Kasilof River salmon excess to spawning esc needs.



Kasilof River Sockeye Salmon

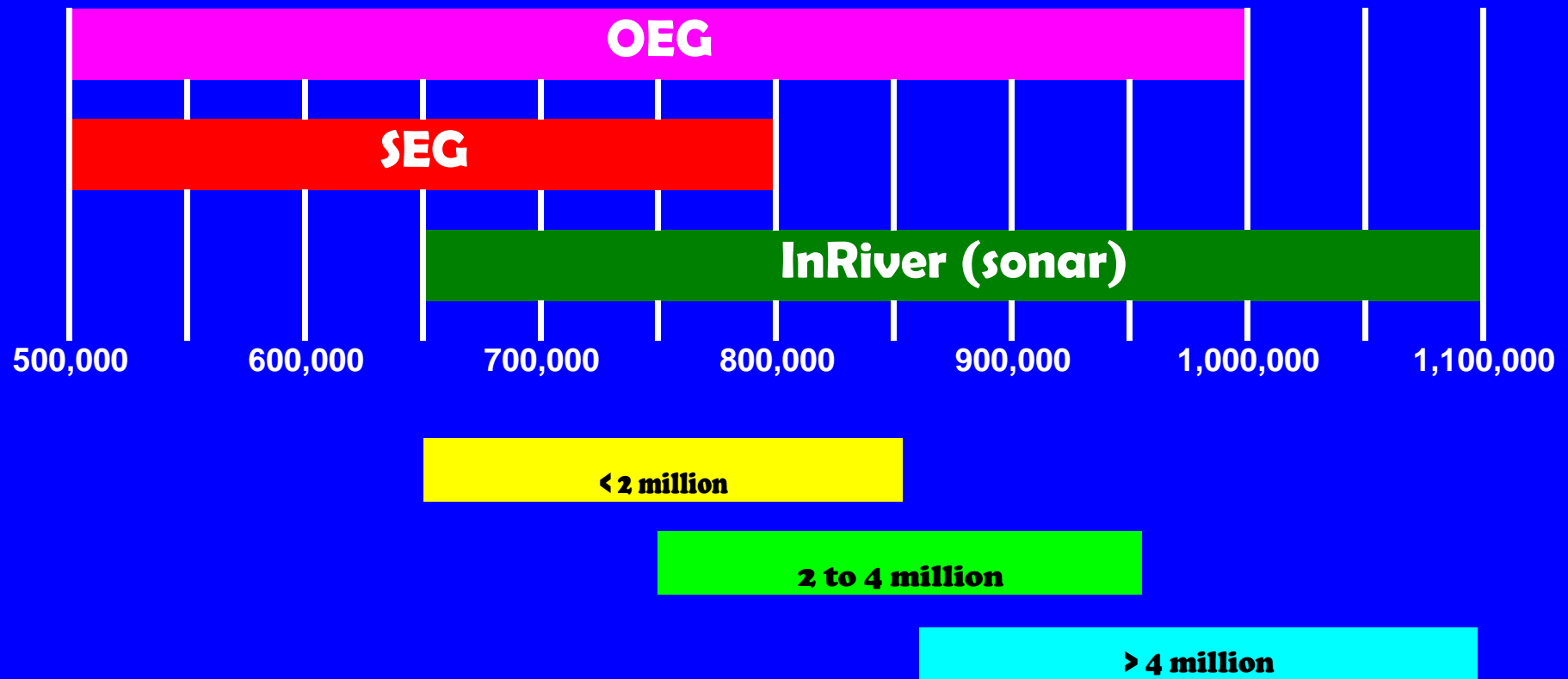


Kenai River Late-Run Sockeye Salmon Plan

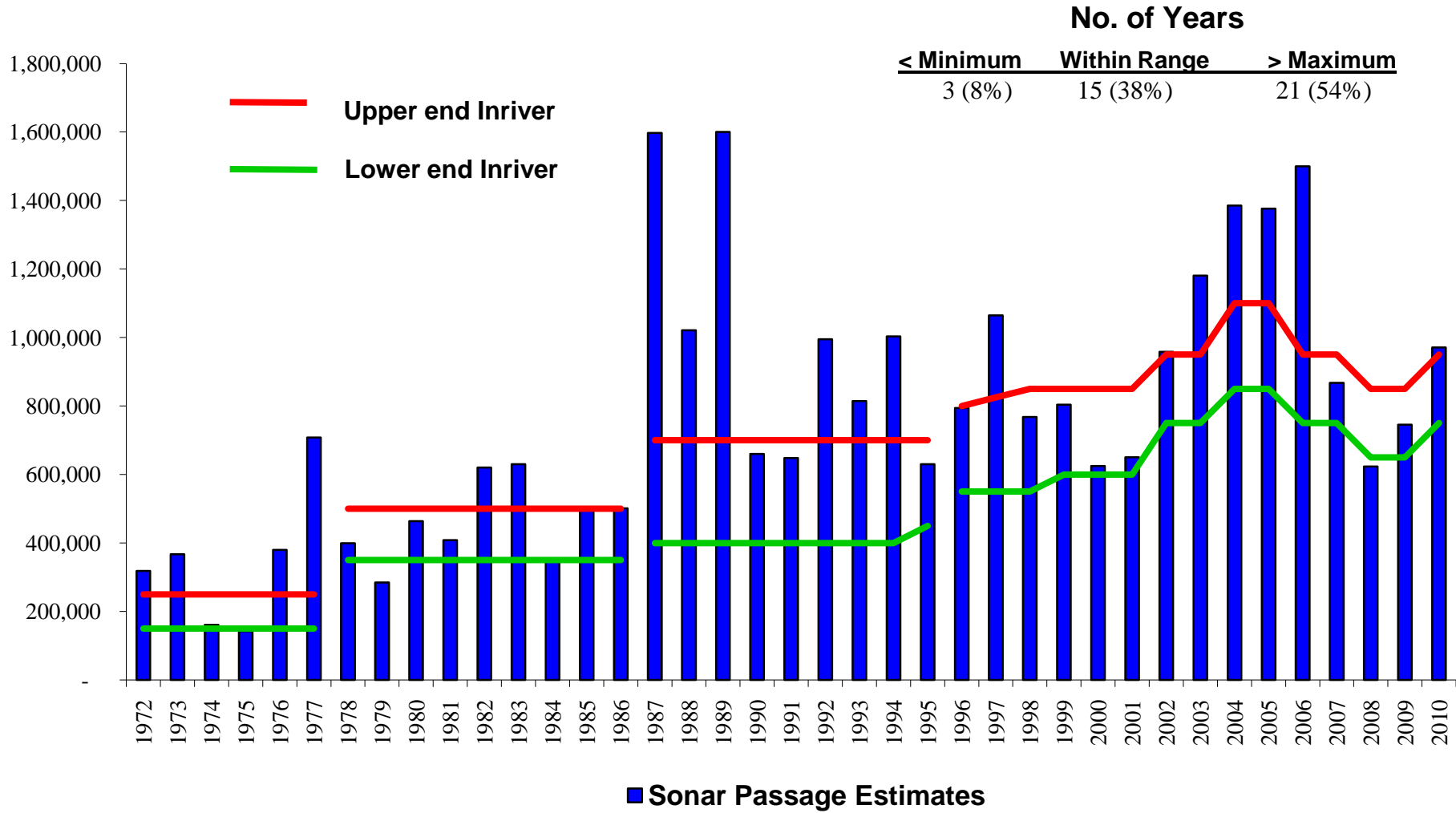
States that the department shall manage Kenai River late-run sockeye salmon stocks primarily for commercial uses based on abundance, while minimizing the harvest of Northern Dist. coho, late-run Kenai River king, and Kenai River coho salmon.



KENAI RIVER SOCKEYE SALMON ESCAPEMENT OBJECTIVES



Kenai River Sockeye Salmon



CENTRAL DISTRICT DRIFT GILLNET MANAGEMENT PLAN

Season opens third Monday in June or June 19, whichever is later.

From July 9 – 15:

Both regular periods are restricted to the Kenai & Kasilof Sections and Drift Gillnet Area 1.

From July 16-31:

Two regular periods during this time restricted based on Kenai River run size.

< 2 million: both periods to Drift Area 1 & Kenai/Kasilof Section.

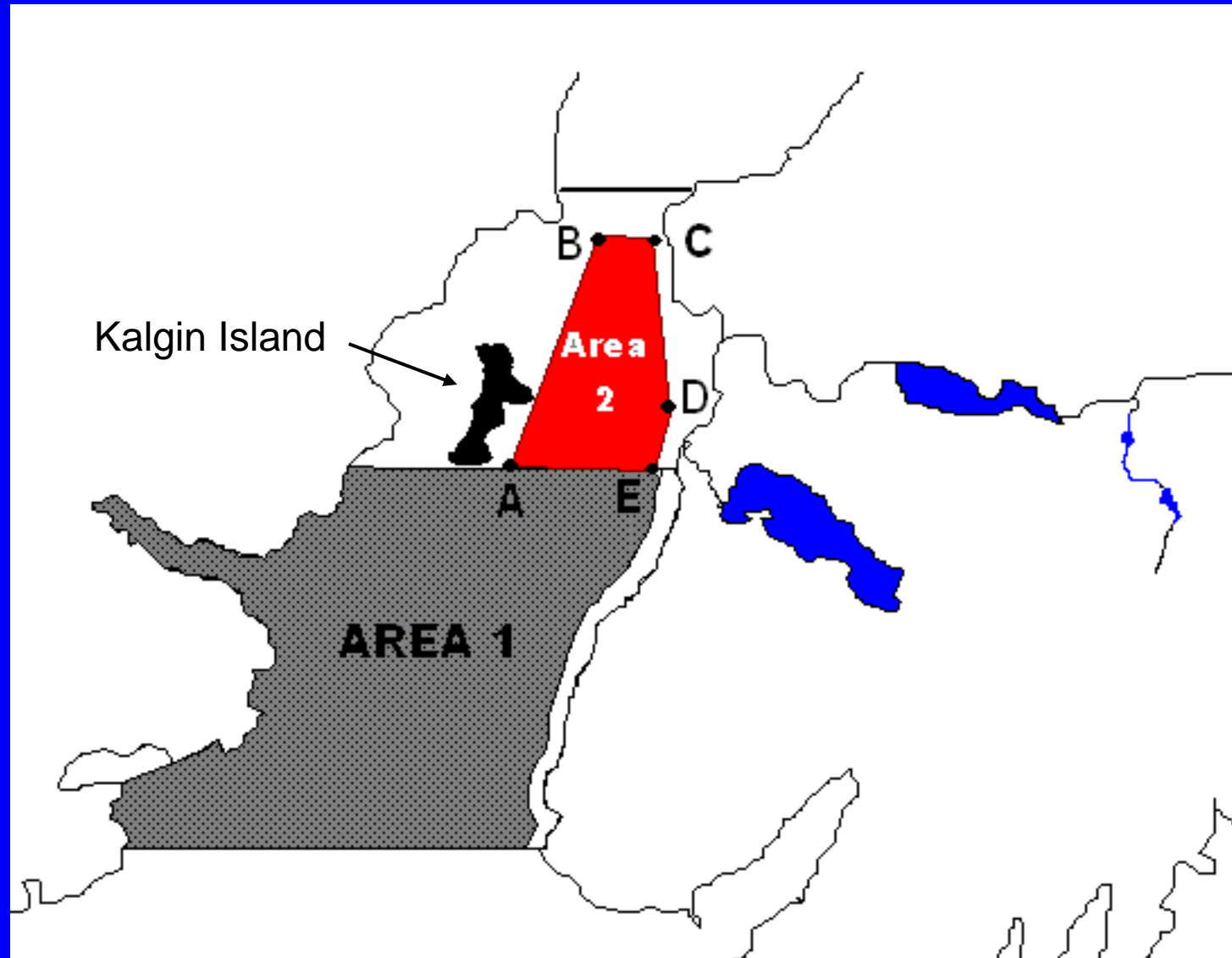
2 – 4 million: both periods to Drift Areas 1 & 2 & Kenai/Kasilof Section.

> 4 million: no restrictions.

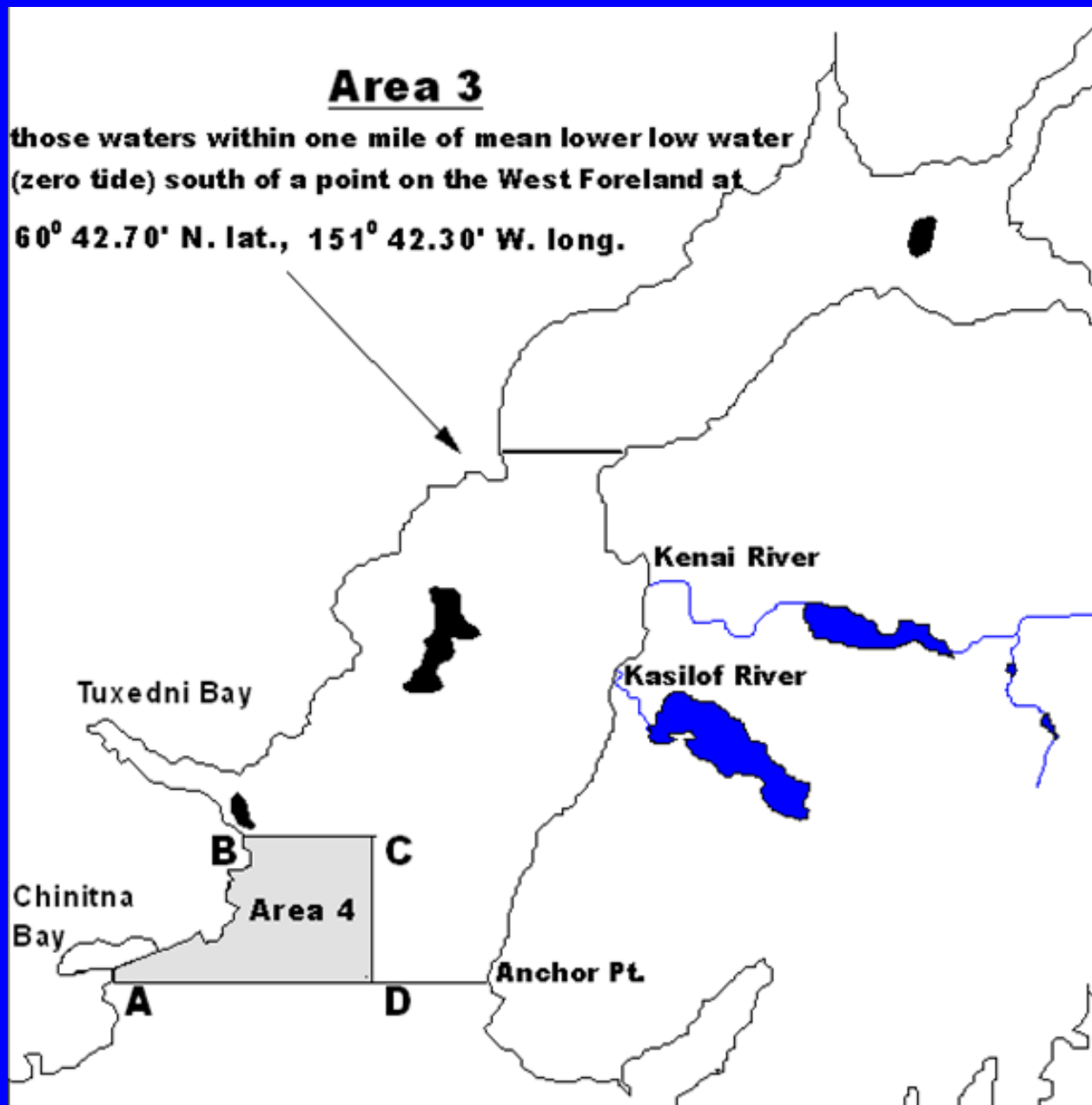
From Aug 15 on:

Regular weekly periods restricted to Drift Areas 3 & 4.

DRIFT GILLNET AREAS 1 & 2



DRIFT GILLNET AREAS 3 & 4

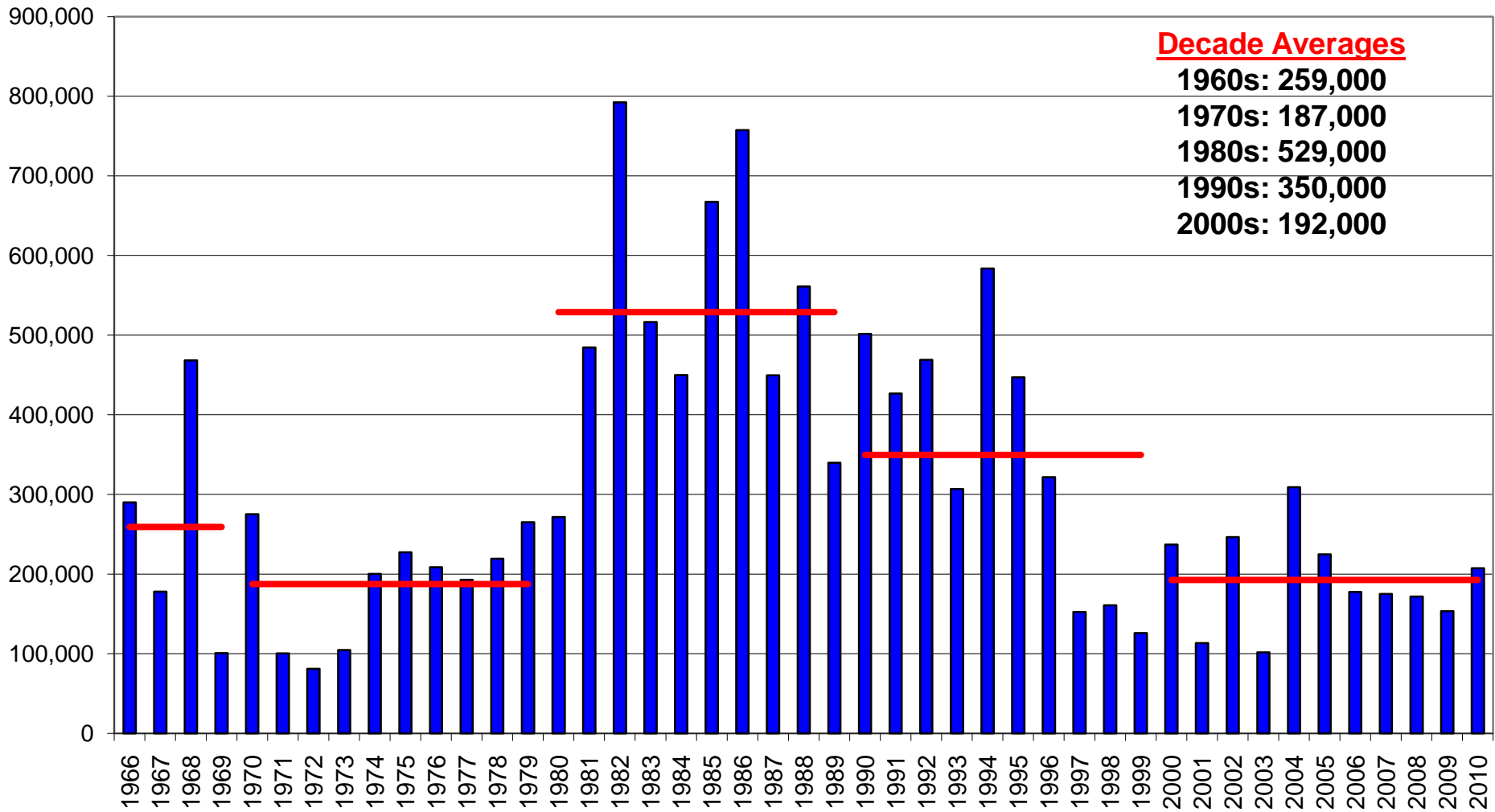


NORTHERN DISTRICT SALMON MANAGEMENT PLAN

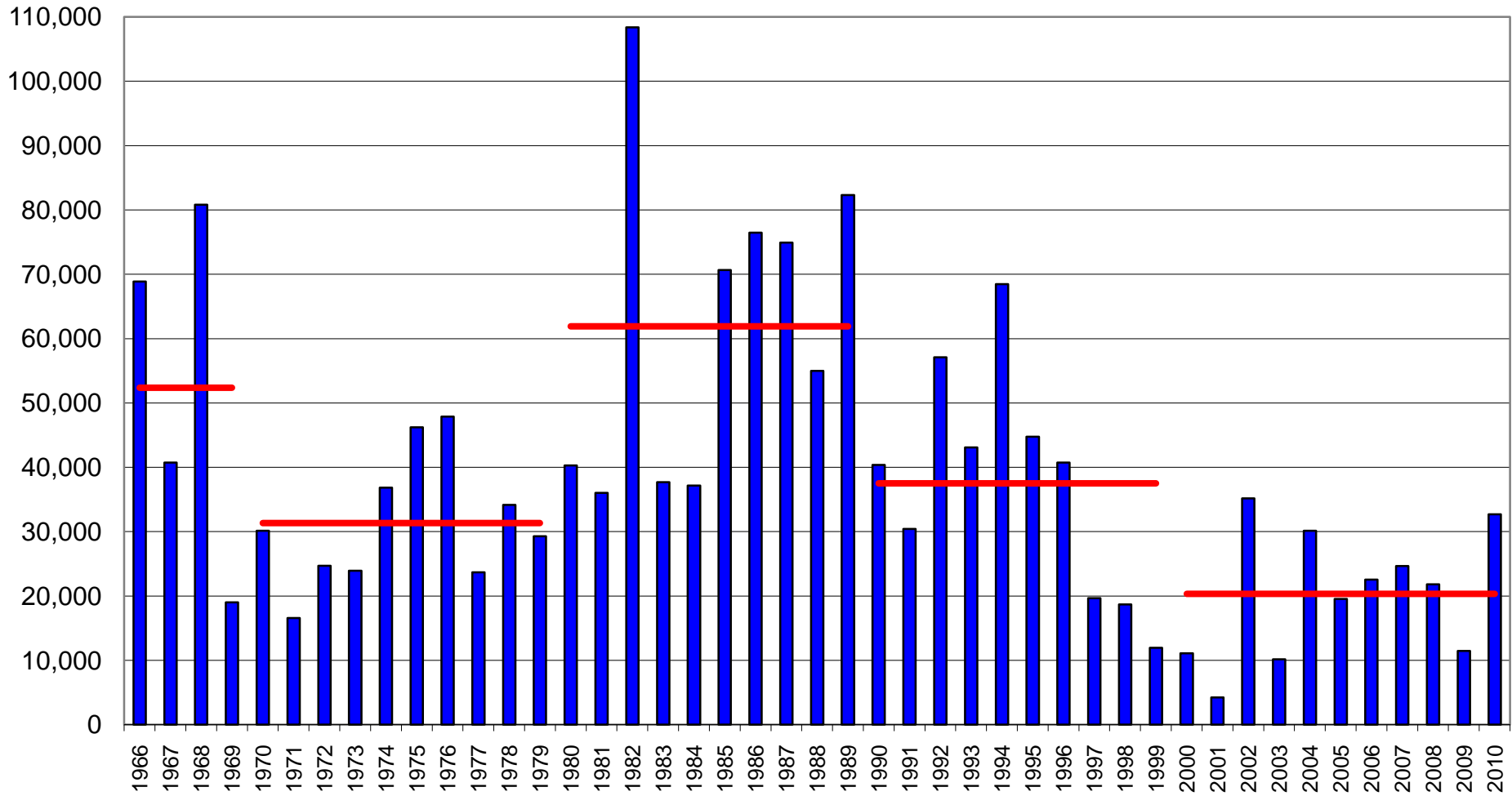
This plan directs the department to manage chum, pink, and sockeye salmon primarily for commercial uses, but also states the purpose of the plan is to minimize the harvest of coho salmon bound for the Northern District.



UCI Coho Salmon Commercial Harvest

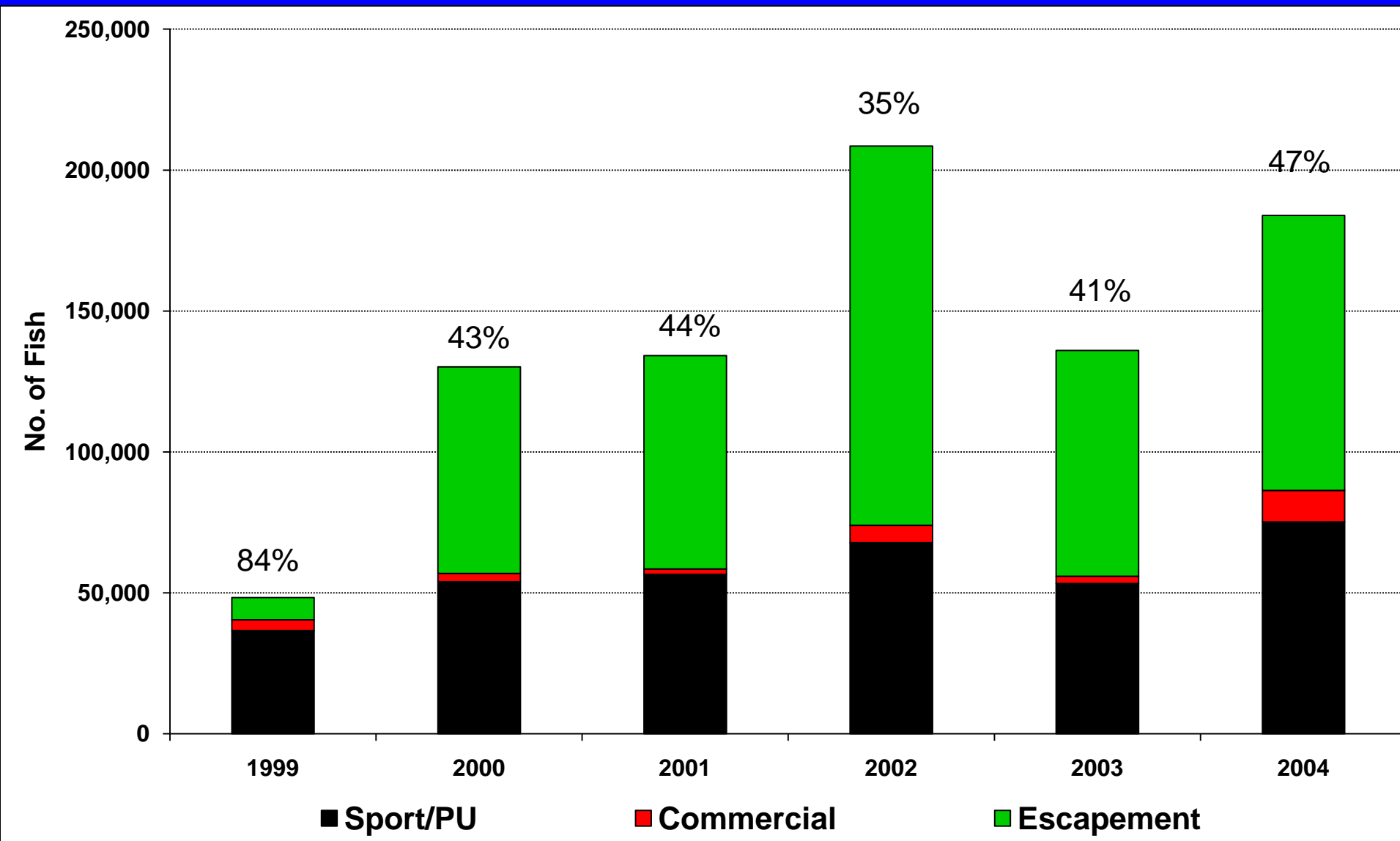


ESSN Coho Salmon Harvest

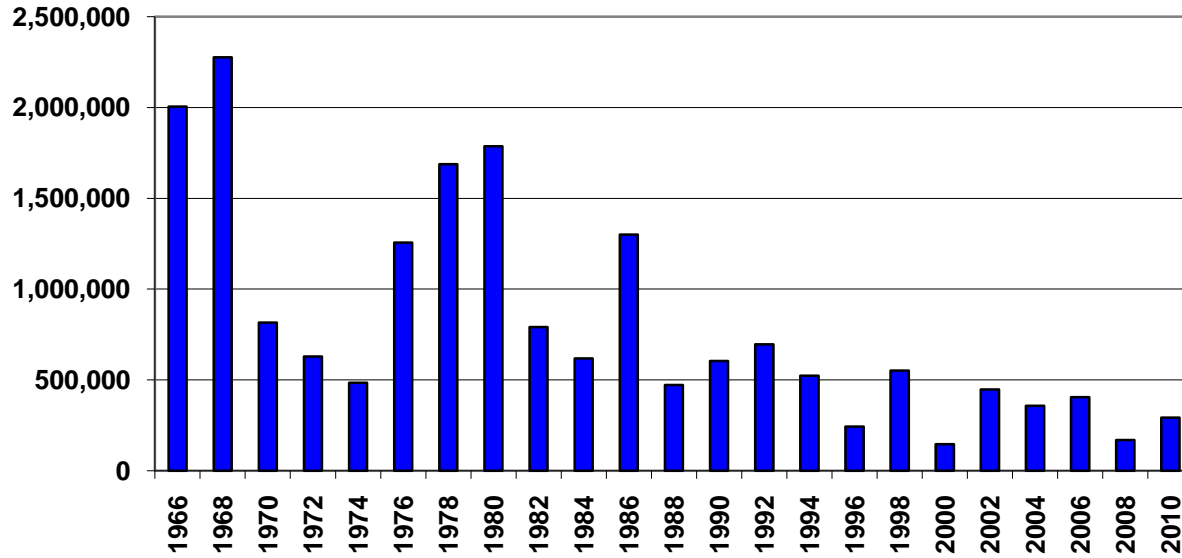


Total Run of Kenai River Coho Salmon during 1999-2004

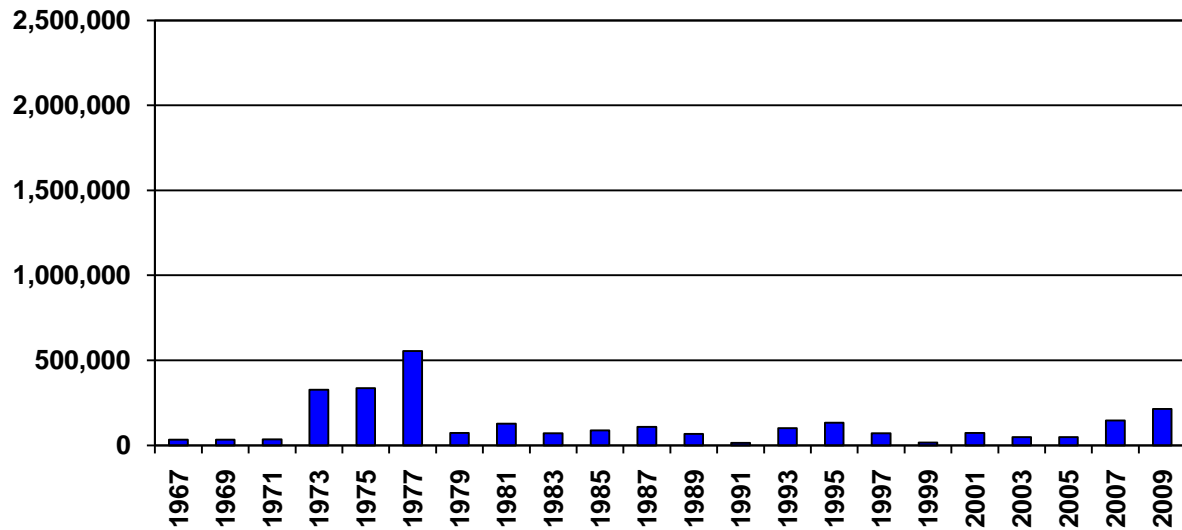
(Total exploitation rate is the number above each bar)



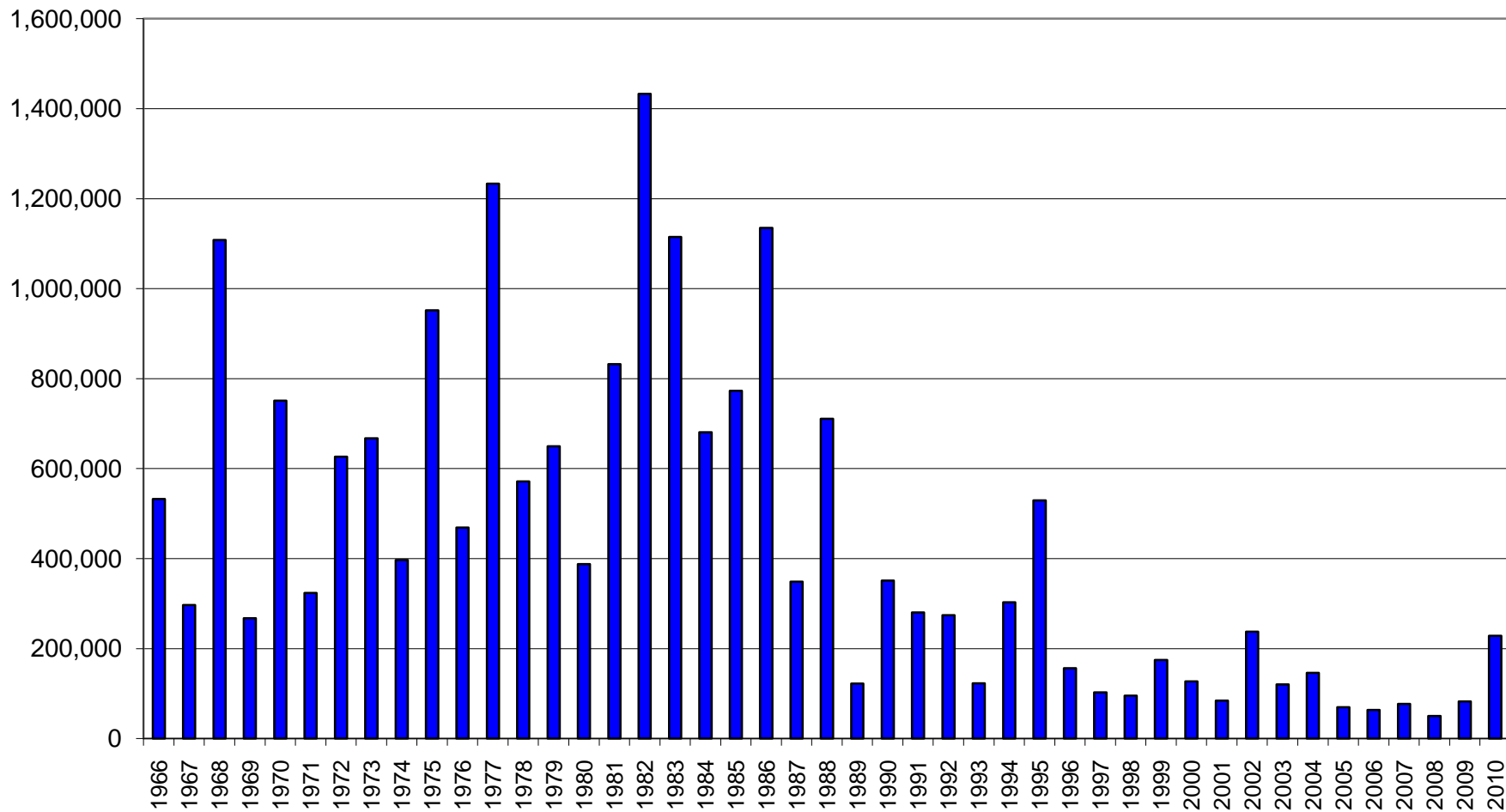
UCI Even-Year Pink Salmon Harvest



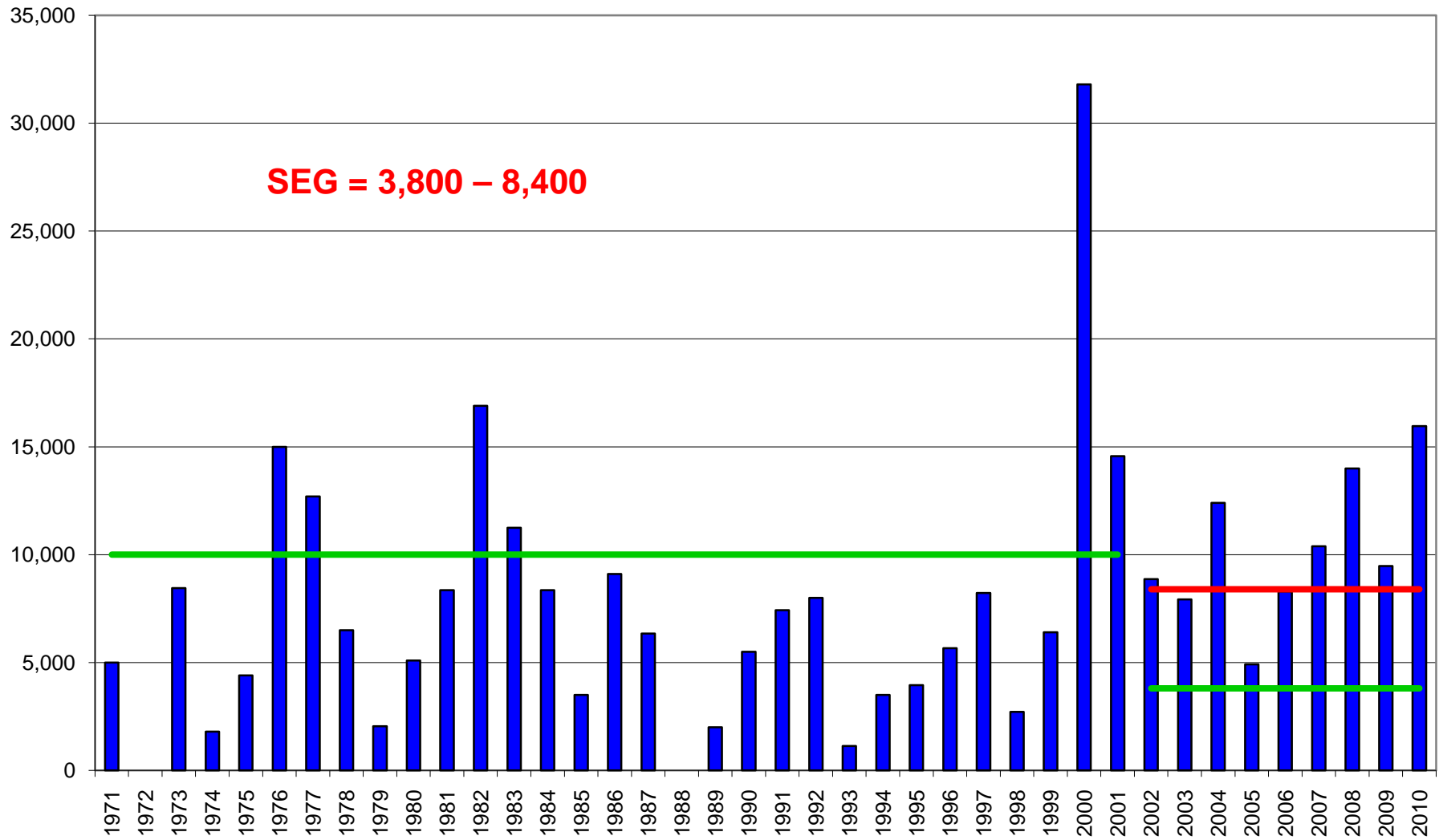
UCI Odd-Year Pink Salmon Harvest



Upper Cook Inlet Chum Salmon Commercial Harvest



Chinitna Bay Peak Aerial Chum Salmon Surveys



2002 UCI MARINE TAGGING STUDY

Population Estimates & Commercial Fishing Exploitation

Species	Tag Type	Pop Estimate	Harvest	Esc	Exploitation
Coho	Telemetry	2.52	0.25	2.27	10%
	PIT	1.61	0.25	2.27	15%
Pink	PIT	21.28	0.45	20.83	2%
Chum	PIT	3.88	0.24	3.64	6%

