

**Fishery Management Report No. 08-57**

---

---

**Overview of the 2008 Southeast Alaska and Yakutat  
Commercial, Personal Use, and Subsistence Salmon  
Fisheries**

by

**Al Tingley**

and

**William Davidson**

December 2008

---

---

Alaska Department of Fish and Game

Divisions of Sport Fish and Commercial Fisheries



## Symbols and Abbreviations

The following symbols and abbreviations, and others approved for the *Système International d'Unités* (SI), are used without definition in the following reports by the Divisions of Sport Fish and of Commercial Fisheries: Fishery Manuscripts, Fishery Data Series Reports, Fishery Management Reports, and Special Publications. All others, including deviations from definitions listed below, are noted in the text at first mention, as well as in the titles or footnotes of tables, and in figure or figure captions.

<b>Weights and measures (metric)</b>		<b>General</b>		<b>Measures (fisheries)</b>	
centimeter	cm	Alaska Administrative Code	AAC	fork length	FL
deciliter	dL	all commonly accepted abbreviations	e.g., Mr., Mrs., AM, PM, etc.	mid-eye to fork	MEF
gram	g	all commonly accepted professional titles	e.g., Dr., Ph.D., R.N., etc.	mid-eye to tail fork	METF
hectare	ha	at	@	standard length	SL
kilogram	kg	compass directions:		total length	TL
kilometer	km	east	E		
liter	L	north	N	<b>Mathematics, statistics</b>	
meter	m	south	S	<i>all standard mathematical signs, symbols and abbreviations</i>	
milliliter	mL	west	W	alternate hypothesis	H <sub>A</sub>
millimeter	mm	copyright	©	base of natural logarithm	<i>e</i>
		corporate suffixes:		catch per unit effort	CPUE
<b>Weights and measures (English)</b>		Company	Co.	coefficient of variation	CV
cubic feet per second	ft <sup>3</sup> /s	Corporation	Corp.	common test statistics	(F, t, $\chi^2$ , etc.)
foot	ft	Incorporated	Inc.	confidence interval	CI
gallon	gal	Limited	Ltd.	correlation coefficient (multiple)	R
inch	in	District of Columbia	D.C.	correlation coefficient (simple)	r
mile	mi	et alii (and others)	et al.	covariance	cov
nautical mile	nmi	et cetera (and so forth)	etc.	degree (angular)	°
ounce	oz	exempli gratia (for example)	e.g.	degrees of freedom	df
pound	lb	Federal Information Code	FIC	expected value	<i>E</i>
quart	qt	id est (that is)	i.e.	greater than	>
yard	yd	latitude or longitude	lat. or long.	greater than or equal to	≥
		monetary symbols (U.S.)	\$, ¢	harvest per unit effort	HPUE
<b>Time and temperature</b>		months (tables and figures): first three letters	Jan, ..., Dec	less than	<
day	d	registered trademark	®	less than or equal to	≤
degrees Celsius	°C	trademark	™	logarithm (natural)	ln
degrees Fahrenheit	°F	United States (adjective)	U.S.	logarithm (base 10)	log
degrees kelvin	K	United States of America (noun)	USA	logarithm (specify base)	log <sub>2</sub> , etc.
hour	h	U.S.C.	United States Code	minute (angular)	'
hour	h	U.S. state	use two-letter abbreviations (e.g., AK, WA)	not significant	NS
minute	min			null hypothesis	H <sub>0</sub>
second	s			percent	%
				probability	P
<b>Physics and chemistry</b>				probability of a type I error (rejection of the null hypothesis when true)	$\alpha$
all atomic symbols				probability of a type II error (acceptance of the null hypothesis when false)	$\beta$
alternating current	AC			second (angular)	"
ampere	A			standard deviation	SD
calorie	cal			standard error	SE
direct current	DC			variance	
hertz	Hz			population	Var
horsepower	hp			sample	var
hydrogen ion activity (negative log of)	pH				
parts per million	ppm				
parts per thousand	ppt, ‰				
volts	V				
watts	W				

***FISHERY MANAGEMENT REPORT NO. 08-57***

**OVERVIEW OF THE 2008 SOUTHEAST ALASKA AND YAKUTAT  
COMMERCIAL, PERSONAL USE, AND SUBSISTENCE SALMON  
FISHERIES**

by

Al Tingley,  
Alaska Department of Fish and Game, Division of Commercial Fisheries, Douglas

and

William Davidson,  
Alaska Department of Fish and Game, Division of Commercial Fisheries, Sitka

Alaska Department of Fish and Game  
Division of Sport Fish, Research and Technical Services  
333 Raspberry Road, Anchorage, Alaska, 99518-1565

December 2008

The Fishery Management Reports series was established in 1989 by the Division of Sport Fish for the publication of an overview of management activities and goals in a specific geographic area, and became a joint divisional series in 2004 with the Division of Commercial Fisheries. Fishery Management Reports are intended for fishery and other technical professionals, as well as lay persons. Fishery Management Reports are available through the Alaska State Library and on the Internet: <http://www.sf.adfg.state.ak.us/statewide/divreports/html/intersearch.cfm>. This publication has undergone regional peer review.

*Al Tingley*  
*Alaska Department of Fish and Game, Division of Commercial Fisheries,*  
*802 3<sup>rd</sup> Street,*  
*P.O. Box 110024, Douglas, AK 99811-0024 USA*

*and*

*William Davidson,*  
*Alaska Department of Fish and Game, Division of Commercial Fisheries*  
*304 Lake Street, Room 103*  
*Sitka, AK 99835-7563 USA*

*This document should be cited as:*

*Tingley, A., and W. Davidson. 2008. Overview of the 2008 Southeast Alaska and Yakutat commercial, personal use, and subsistence salmon fisheries. Alaska Department of Fish and Game, Fishery Management Report No.08-57, Anchorage.*

The Alaska Department of Fish and Game (ADF&G) administers all programs and activities free from discrimination based on race, color, national origin, age, sex, religion, marital status, pregnancy, parenthood, or disability. The department administers all programs and activities in compliance with Title VI of the Civil Rights Act of 1964, Section 504 of the Rehabilitation Act of 1973, Title II of the Americans with Disabilities Act (ADA) of 1990, the Age Discrimination Act of 1975, and Title IX of the Education Amendments of 1972.

**If you believe you have been discriminated against in any program, activity, or facility please write:**

ADF&G ADA Coordinator, P.O. Box 115526, Juneau, AK 99811-5526

U.S. Fish and Wildlife Service, 4401 N. Fairfax Drive, MS 2042, Arlington, VA 22203

Office of Equal Opportunity, U.S. Department of the Interior, 1849 C Street NW MS 5230, Washington DC 20240

**The department's ADA Coordinator can be reached via phone at the following numbers:**

(VOICE) 907-465-6077, (Statewide Telecommunication Device for the Deaf) 1-800-478-3648, (Juneau TDD) 907-465-3646, or (FAX) 907-465-6078

**For information on alternative formats and questions on this publication, please contact:**

ADF&G Division of Sport Fish, Research and Technical Services, 333 Raspberry Road, Anchorage AK 99518 (907) 267-2375.

# TABLE OF CONTENTS

	<b>Page</b>
LIST OF TABLES.....	ii
LIST OF FIGURES.....	ii
ABSTRACT.....	1
INTRODUCTION.....	1
DESCRIPTION OF THE SOUTHEAST ALASKA/YAKUTAT REGION.....	1
FISHERIES MANAGEMENT ORGANIZATION.....	2
HISTORICAL SUMMARY.....	2
FISHERY CHARACTERISTICS.....	3
FISHERY PARTICIPATION.....	4
2008 SALMON HARVEST.....	4
HARVEST BY GEAR TYPE.....	4
EXVESSEL VALUE.....	5
SUBSISTENCE AND PERSONAL USE SALMON FISHERIES.....	5
TABLES AND FIGURES.....	7

## LIST OF TABLES

<b>Table</b>	<b>Page</b>
1. Southeast Alaska annual total commercial salmon harvest and percentages of the total, in numbers, by species, from 1980 to 2007.....	8
2. Number of active limited entry and interim use permits issued and fished in the Southeast Alaska and Yakutat salmon fisheries, from 1977 to 2007.....	9
3. Southeast Alaska region commercial salmon harvest, in numbers, by harvest type and fishery, 2007.....	10
4. Southeast Alaska region annual commercial total salmon harvest by harvest type, in numbers and percent, from 1980 to 2007. ....	11
5. Southeast Alaska region annual commercial Chinook salmon harvest by harvest type, in numbers and percent, from 1980 to 2007. ....	12
6. Southeast Alaska region annual commercial total sockeye salmon harvest by harvest type, in numbers and percent, from 1980 to 2007.....	13
7. Southeast Alaska region annual commercial total coho salmon harvest by harvest type, in numbers and percent, from 1980 to 2007. ....	14
8. Southeast Alaska region annual commercial total pink salmon harvest by harvest type, in numbers and percent, from 1980 to 2007. ....	15
9. Southeast Alaska region annual commercial total chum salmon harvest by harvest type, in numbers and percent, from 1980 to 2007.....	16
10. Southeast Alaska region salmon exvessel value, harvest, average weight, and price paid per.....	17
11. Southeast Alaska region total salmon exvessel values (in dollars), by species, from 1988 to 2007. ....	18
12. Southeast Alaska reported subsistence and personal use salmon harvest, by species, and number of permits issued, from 1985 to 2007. ....	19
13. Yakutat Area reported subsistence salmon harvest, by species, and number of permits issued, from 1985 to 2007.....	20

## LIST OF FIGURES

<b>Figure</b>	<b>Page</b>
1. The Southeast Alaska/Yakutat Region (Region I) consists of Alaska waters between Cape Suckling on the north and Dixon Entrance on the south. ....	21
2. Boundaries for regulatory districts 1 to 16, as well as Dixon Entrance district, within Southeast Alaska. ....	22
3. Boundaries for Yakutat and Yakataga regulatory districts, within the Yakutat management area (Registration Area D). ....	23
4. Region I (Southeast Alaska and Yakutat) historical salmon harvest and recent 10-year average harvest, from 1878 to 2008. ....	24
5. Region I (Southeast Alaska and Yakutat) historical salmon harvest by species and season, 1878–2008. ....	25
6. Exvessel value (in 2008—adjusted dollars) by species and season, and number of salmon harvested by season, 1988–2008. ....	26
7. Number of fish harvested in the subsistence/personal use fishery, by species, for Southeast Alaska, 1985 to 2008.....	27
8. Number of fish harvested, by species, in the Yakutat subsistence/personal use fishery, 1985 to 2008.....	28

## ABSTRACT

Southeast Alaska and Yakutat commercial, personal use and subsistence salmon fisheries are summarized for the 2008 season. Historic harvests are provided for comparison. Total commercial harvest in 2008 was 28.0 million salmon with an exvessel value about \$117,000,000. Harvest by species in 2008 included 239,000 Chinook (*Oncorhynchus tshawytscha*), 422,000 sockeye (*O. nerka*), 2.4 million coho (*O. kisutch*), 16.0 million pink (*O. gorbuscha*), and 9.0 million chum salmon (*O. keta*). In the purse seine fishery 213 permit holders harvested 17.8 million salmon, including 14.3 million pink, and 3.2 million chum salmon. In the drift gillnet fishery 395 permit holders harvested 3.8 million salmon, including 2.6 million chum, 265,000 sockeye, 337,000 coho, and 32,000 Chinook salmon. In the troll fishery 745 power troll and 372 hand troll permit holders harvested 147,000 Chinook and 1.3 million coho salmon. In the set gillnet fishery 128 permit holders harvested 35,000 sockeye and 154,000 coho salmon. Hatchery organizations harvested a total of 3.5 million salmon for cost recovery, including 3.0 million chum salmon. In the personal use and subsistence fisheries 3,122 permits were issued in Southeast Alaska and Yakutat combined. Reported harvest by 58% of returned permits thus far is about 28,000 salmon, 85% of which were sockeye salmon.

Key words: Southeast Alaska, Yakutat, Region I, 2008 season, commercial fisheries, personal use fisheries, subsistence fisheries, Chinook (*Oncorhynchus tshawytscha*), sockeye (*O. nerka*), coho (*O. kisutch*), pink (*O. gorbuscha*), chum (*O. keta*), salmon, exvessel value, permit holders, hatchery, purse seine, drift gillnet, power troll, hand troll, set gillnet.

## INTRODUCTION

This report is an overview of the commercial and subsistence/personal use salmon fisheries in the Southeast Alaska/Yakutat Region for the 2008 season. Separate annual management reports are issued which provide detailed summaries of the 2008 Southeast and Yakutat Salmon Troll Fishery, the 2008 Yakutat Area Commercial Set Net Fishery, and the 2008 Southeast Alaska Purse Seine and Drift Gillnet Fisheries. Prior to 2006 these reports were combined annually into the Commercial, Personal Use, and Subsistence Salmon Fisheries: Report to the Alaska Board of Fisheries.

Around 28.0 million salmon were commercially harvested in the Southeast Alaska/Yakutat Region in 2008 (Table 1). 1,827 permit holders participated in the common property commercial salmon season in 2008, a 1.0% decrease from 2007 effort levels (Table 2). Most commercial salmon fisheries have been under a program of limited entry since 1975. Limited entry hand troll permits were first issued in 1982. 2008 salmon harvests by gear type included 17.8 million by purse seine, 3.8 million by drift gillnet, 0.3 million by set net, and 1.5 million by hand and power troll (Table 3). The total exvessel value of the commercial salmon harvest was approximately \$117 million dollars. With 58% of the 3,122 Region I subsistence/personal use permits returned thus far, reported harvest is 28,000 fish, of which 85% were sockeye salmon (*Oncorhynchus nerka*).

## DESCRIPTION OF THE SOUTHEAST ALASKA/YAKUTAT REGION

The Southeast Alaska/Yakutat Region (Region I) consists of Alaska waters between Cape Suckling on the north and Dixon Entrance on the south (Figure 1). Region I is divided into 2 salmon net registration areas. Registration Area A, the Southeast Alaska area, extends from Dixon Entrance to Cape Fairweather. The Southeast Alaska area is divided into 17 regulatory districts, Districts 1 through 16 and the Dixon Entrance District (Figure 2). Some Registration Area A districts are further sub-divided into sections by regulation. Registration Area D, the Yakutat area, extends from Cape Fairweather to Cape Suckling. The Yakutat area is further divided into the Yakutat District, extending from Cape Fairweather to Icy Cape, and the Yakataga District extending westward from Icy Cape to Cape Suckling (Figure 3).

For management and administrative purposes, Region I is divided into 6 management areas with offices located in Juneau, Ketchikan/Craig, Petersburg/Wrangell, Sitka, Haines, and Yakutat. The Craig office is seasonally staffed, and other offices are open all year.

## **FISHERIES MANAGEMENT ORGANIZATION**

Management of the Region I salmon fisheries is carried out by a coordinated team of area and regional management biologists and their assistants. There are 6 area management biologists in Region I, corresponding to the area offices. Management biologists with area responsibilities oversee the commercial salmon net (purse seine, drift gillnet and set gillnet), herring, shrimp pot, miscellaneous shellfish dive fisheries, and the subsistence/personal use fisheries in their respective areas. Management biologists with regional responsibilities oversee the salmon troll, groundfish, crab, and shrimp beam trawl fisheries. There is a closely coordinated regional management approach for every fishery because of the spatial and temporal movement of fish and fishermen between the various management areas. Prior to each salmon season the Alaska Department of Fish and Game (ADF&G) publishes detailed management plans which specify how that season's fishery will be managed along with information about expected returns. Specific management actions are taken inseason which specify times and areas of fishery openings or additional measures. These actions are implemented through emergency orders under authority delegated by the department commissioner to regional and area management biologists. Details of openings are announced in department issued news releases which are widely distributed. All landings of commercially harvested salmon are reported on fish tickets by the initial buyers. Subsistence and personal use fisheries are managed under permit authority. Permits are issued separately for each management area, and harvests are reported when permits are returned at the end of the season.

## **HISTORICAL SUMMARY**

Commercial utilization of the Region I salmon resources began in the late 1870s (Figure 4). Until the early 1900s, sockeye salmon was the primary species harvested (Figure 5). Pink salmon (*O. gorbuscha*) began to dominate the harvest in the early 1900s. During the past 10 years pink salmon has comprised 71% of the region's total salmon harvest (Table 1). The relative order of production (in numbers of fish) from highest to lowest is generally pink, chum (*O. keta*), coho (*O. kisutch*), sockeye, and Chinook (*O. tshawytscha*) salmon.

The harvest of salmon in Region I peaked at over 60 million in the late 1930s and early 1940s and declined to historical low levels in the 1950s and early 1960s (Figure 4). During the mid to late 1960s, harvests increased somewhat, but in the early 1970s, another decline in production occurred. Since the mid 1970s, salmon harvests in Region I have generally increased with record harvests of Chinook (2004), sockeye (1993), coho (1994), pink (1999), and chum salmon (1996) occurring in recent years (Table 1).

Recent historical salmon harvests, since the time of Alaska statehood, by gear and harvest type, are presented in Table 4. The various salmon fisheries in the region are well-established and the distribution of harvests between fisheries has changed little comparing the recent year, the recent 10-year average, or the long term average since 1962. The exception is that private hatchery cost recovery harvests, which only began in 1980, now account for a larger proportion of overall harvests. Recent 10-year average harvests in numbers include: 78% by purse seine, 9% by hatcheries, 7% by drift gillnet, 4% by troll, and 2–3% by other categories.



Chinook salmon harvest levels have been relatively consistent compared with other species, and are based on three components: the all-gear Pacific Salmon Treaty (PST) harvest ceiling based on forecast coastwide abundance, directed fisheries on returns to the Stikine and/or Taku rivers also based on PST harvest sharing agreements, and by production from Alaska enhancement programs. The average harvest since 1962 has been around 300,000 (Table 5). During the recent 6-year period from 2002–2007, Chinook salmon harvests averaged 411,451, 136% of the long range average harvest of 302,491. However, harvests in 2008 were below average at around 239,000.

Harvests of sockeye salmon averaged around 1.0 million from 1962–1988, but the average increased to 1.9 million from 1989–2007. The 2008 harvest was only 422,000 fish, the lowest since 1975 and the second lowest since statehood (Table 6).

Harvests of coho salmon have generally been two to three times the harvests of the 1960s and 1970s during the past 20-year period, and were at intermediate levels in the 1980s. Harvests in 2008 of 2.4 million were in-between the long term average of 2.0 million and the recent 10-year average of 2.8 million (Table 7).

The long-term average pink salmon harvest since statehood has been around 30 million. In 2006, pink salmon harvests fell to the lowest since 1988; however, harvests in 2007 rebounded to near the most recent 10-year average (Table 8; Figure 5). Harvests of 16.0 million in 2008 showed an improvement over 2006 levels, but were well-below the long-term average and returns were uneven geographically, with very poor returns to early systems and the northern inside districts.

Harvests of chum salmon increased as new hatchery production began in the mid-1980s and in recent years the majority of chum salmon harvests in the region are attributable to hatchery production. Total harvests of chum salmon increased from an average of 1.6 million from 1960 until 1983, and have averaged 11.5 million during the most-recent 10-year average from 1998–2007 (Table 9). Harvests of 9.0 million chum salmon in 2008 were 78% of the recent 10-year average (Figure 5).

## **FISHERY CHARACTERISTICS**

Salmon are commercially harvested in Southeast Alaska (Registration Area A) with purse seines and drift gillnets; in Yakutat (Registration Area D) with set gillnets; and in both areas with hand and power troll gear. The salmon net fisheries are confined to state waters. The troll fishery operates in both state waters and in the federal waters of the Exclusive Economic Zone (EEZ). The use of floating fish traps is only allowed within the Annette Island Fishery Reserve, established by Presidential Proclamation in 1916; however, there have been no reported fish trap harvests since 1993.

Region I salmon fisheries are complex due to the mixed stock and mixed species nature of the returns and to the existence of several different gear groups that often harvest the same stocks of fish. Because the region contains approximately 5,500 salmon producing streams and tributaries of various productivity levels, it is impractical to apply stock specific fisheries management according to the run strength for most individual returns. Additionally, some salmon harvested in the region originate from other states (primarily Washington and Oregon) and Canada. Net and troll fisheries in Southeast Alaska and Yakutat are managed for sustained yield, allocated among users according to Alaska Board of Fisheries regulations, and also in accordance with harvest sharing provisions of the Pacific Salmon Treaty between the U.S. and Canada.

## **FISHERY PARTICIPATION**

According to near-final information from the Commercial Fisheries Entry Commission (CFEC), 3,047 total permits were issued in 2008 including 380 purse seine, 475 drift gillnet, 165 set gillnet, 1,066 hand troll, and 961 power troll permits (Table 2). Fish ticket information indicates that a total of 1,853 permit holders reported salmon landings in calendar year 2008, including 213 purse seine, 395 drift gillnet, 128 set gillnet, 372 hand troll, and 745 power troll permit holders. Purse seine participation by 213 permit holders in 2008 declined from 239 in 2007 to near the lowest effort recorded—209 boats in 2004. Seine effort was only 75% of the recent 10-year average of 286 boats. The number of purse seine permits issued in 2008 dropped by 35 permits to 380 because a permit buy-back program went into effect. Drift gillnet participation by 395 permit holders was about equal to the recent 10-year average, reversing a declining trend. Set gillnet effort in 2008 by 128 permit holders was above the recent 10-year average. Power troll participation by 745 permit holders was similar to 2007, but above the recent 10-year average. Hand troll effort by 372 permit holders was also similar to 2007, and was above the recent 10-year average.

## **2008 SALMON HARVEST**

The Region I cumulative commercial salmon harvest by all gear types, including hatchery cost recovery, was 28.0 million fish in 2008 (Table 3). Total common property commercial harvest was 23.4 million, 84% of total harvests, excluding cost recovery and Annette Island harvests. The 2008 harvests by species compared to the preceding year were as follows: Chinook 67%, sockeye 22%, coho 115%, pink 36%, and chum salmon 96%. The Region I total commercial salmon harvest proportion consisted of Chinook (<1%), sockeye (2%), coho (8%), pink (57%), and chum salmon (32%) (Table 1). The 2008 combined-gear, large Chinook salmon harvest of 236,000 fish was 70% of the most recent 10-year average. The 422,000 sockeye salmon harvest was 28% of the 10-year average. The coho salmon harvest of 2.37 million fish was 85% of the 10-year average. The pink salmon harvest of 16.0 million was 34% of the 10-year average. The chum salmon harvest of 9.0 million fish was 78 % of the 10-year average (Table 1). Although the total harvest and all species harvests were below the recent 10-year averages, harvests of coho and chum salmon were above the long-term averages from 1962–2007.

## **HARVEST BY GEAR TYPE**

The 2008 Region I salmon harvest by gear type and species are summarized in Tables 3. Historical harvests by gear are summarized in Table 4. Salmon landed by purse seine accounted for 64% of the total salmon harvest, followed by drift gillnet and hatchery cost recovery (13% each), and troll (5%) (Table 4). Hand and power troll harvests accounted for 61% of the regional landings of Chinook salmon and 54% of the coho salmon harvest (Tables 5 and 7). Of the total harvest, purse seiners harvested 18% of the sockeye, 89% of the pink, and 36% of the chum salmon in Region I (Tables 6, 8, and 9). Drift gillnetters accounted for included 13% of the Chinook, 63% of the sockeye and 29% of the chum salmon harvested (Tables 5, 6, and 9). The set gillnet fleet harvested 8% of the sockeye and 6% of the coho salmon regional harvests (Tables 6 and 7). Approximately 17% of the Chinook salmon and 33% of the chum salmon harvest was taken in the hatchery cost recovery fisheries (Tables 5 and 9).

## **EXVESSEL VALUE**

The exvessel value (wholesale fish ticket value) of the 2008 Region I commercial salmon harvest was estimated at \$116.8 million, an 18% increase from 2007 (Table 10). 2008 marks the 6<sup>th</sup> year in a trend of increasing value from a historic low of \$54 million in 2002 (Table 11; Figure 6). The increase since 2002 is a 190% increase after adjustment for the increasing Consumer Price Index. The exvessel estimate is considered conservative because it is based on the price reported on fish tickets (due within 7 days of landing) and does not include post-season price adjustments. More accurate information is available from the Commercial Fisheries Entry Commission (CFEC) based on annual operator's reports from processors; however such information is not available until post season analysis can be finalized, usually 1–2 years following the most recent season.

The exvessel value by gear was highest for the troll fishery (\$32.9 million), closely followed by the purse seine fishery (\$32.8 million), then hatchery cost recovery (\$23.7 million), drift gillnet (\$23.3 million), Annette Island fisheries (\$2.3 million), and set gillnet (\$1.7 million) (Table 10). The total regional value of salmon harvests by species included: Chinook \$17.9 million, sockeye \$3.6 million, coho \$28.6 million, pink \$16.5 million, and chum salmon \$50.1 million (Table 10). Compared with the previous year, Chinook salmon value was about the same since price increases made up for decreased harvests; sockeye salmon value was down \$9.6 million due to low returns, coho salmon value was up \$13 million due to the combination of increased prices and harvests; pink salmon value was down about \$8 million due to much lower harvests despite stronger prices; and chum salmon value was up by \$24 million with similar harvest levels but much stronger prices. Prices increased for all species. Historical exvessel values are presented in Table 11 and in Figure 6.

## **SUBSISTENCE AND PERSONAL USE SALMON FISHERIES**

A total of 3,001 subsistence and subsistence/personal use combined salmon permits were issued in the Southeast Alaska (Registration Area A) portion of the region in 2008 (Table 12). Numbers of permits issued included 444 Haines management area subsistence permits and 2,557 combined subsistence/personal use permits, including: Juneau (991), Ketchikan (607), Sitka (631), Petersburg (242), and Wrangell (86) management areas. With only 60% of permits returned by the time of this report, the preliminary reported harvest is 27,100 salmon. Harvests by area included about 6,933 fish in the Haines subsistence fishery and 20,167 fish in the subsistence/personal use combined fisheries, including: Juneau (6,821), Ketchikan (2,933), Sitka (8,513), Petersburg (1,539), and Wrangell (361). As is usual, sockeye salmon made up 84% of the regional harvest (Figure 7). The harvest numbers are not finalized until the following year when more permits are returned. Total reported subsistence harvests for 2007 were 36,119 fish, and 89% of permits issued were returned with harvest information. The 2007 harvest for the Southeast Alaska area was around 80% of the 10-year average harvest.

During 2008, a total of 121 subsistence permits were issued for the Yakutat area (Registration area D) (Table 13). Yakutat subsistence permits are not required to be returned until the spring of the following year, and only 20% of the permits have been returned and entered at this time. The recent 10-year average harvests included 3,847 sockeye and 1,118 coho salmon. Sockeye harvests were 64% and coho harvests were 19% of the average total subsistence harvest (Table 13; Figure 8).



## **TABLES AND FIGURES**

Table 1.–Southeast Alaska annual total commercial salmon harvest and percentages of the total, in numbers, by species, from 1980 to 2008.

Year	Chinook <sup>a</sup>		Jacks <sup>b</sup>		Sockeye		Coho		Pink		Chum		Total
	Catch	%	Catch	%	Catch	%	Catch	%	Catch	%	Catch	%	
1980	324,357	2%	-	-	1,106,039	6%	1,116,237	6%	14,500,415	78%	1,642,938	9%	18,689,986
1981	268,484	1%	-	-	1,072,201	5%	1,358,948	6%	19,038,208	84%	837,240	4%	22,575,081
1982	290,434	1%	-	-	1,480,596	5%	2,086,331	7%	24,244,823	82%	1,330,219	5%	29,432,403
1983	289,428	1%	166	<1%	1,559,011	4%	1,929,073	5%	37,545,915	88%	1,170,126	3%	42,493,719
1984	270,451	1%	-	-	1,215,822	4%	1,910,255	6%	24,705,756	77%	4,084,200	13%	32,186,484
1985	253,713	<1%	-	-	1,863,815	3%	2,597,278	4%	51,959,321	87%	3,275,417	5%	59,949,544
1986	262,432	<1%	1,158	<1%	1,442,986	3%	3,404,602	6%	46,172,277	84%	3,358,992	6%	54,642,447
1987	261,396	2%	1,792	<1%	1,377,717	9%	1,543,348	10%	10,280,422	64%	2,721,661	17%	16,186,336
1988	263,847	2%	1,034	<1%	1,460,417	8%	1,046,668	6%	11,207,162	64%	3,535,591	20%	17,514,719
1989	280,964	<1%	4,092	<1%	2,124,840	3%	2,204,044	3%	59,460,203	90%	1,968,894	3%	66,043,037
1990	342,379	1%	3,776	<1%	2,155,716	5%	2,868,217	7%	32,342,002	81%	2,217,895	6%	39,929,985
1991	325,602	<1%	5,575	<1%	2,063,586	3%	3,197,003	5%	61,926,339	87%	3,336,043	5%	70,854,148
1992	233,924	1%	2,363	<1%	2,666,422	6%	3,696,209	8%	34,963,298	75%	4,936,515	11%	46,498,731
1993	280,849	<1%	3,962	<1%	3,190,960	4%	3,665,435	5%	57,299,350	79%	7,879,868	11%	72,320,424
1994	241,100	<1%	6,336	<1%	2,392,489	3%	5,721,700	8%	57,274,877	75%	10,403,085	14%	76,039,587
1995	218,451	<1%	1,978	<1%	1,795,331	3%	3,345,678	5%	47,965,506	74%	11,225,693	17%	64,552,637
1996	213,640	<1%	947	<1%	2,799,848	3%	3,156,951	4%	64,629,714	74%	16,043,397	18%	86,844,497
1997	303,898	1%	558	<1%	2,477,394	5%	1,974,427	4%	28,975,224	64%	11,789,139	26%	45,520,640
1998	232,906	<1%	1,705	<1%	1,375,358	2%	2,989,080	5%	42,535,402	68%	15,695,285	25%	62,829,736
1999	195,048	<1%	3,047	<1%	1,160,730	1%	3,630,234	4%	77,848,284	80%	14,930,932	15%	97,768,275
2000	232,546	1%	1,349	<1%	1,229,354	3%	1,957,028	5%	20,313,426	51%	15,910,909	40%	39,644,612
2001	243,225	<1%	2,585	<1%	2,035,230	3%	3,300,932	4%	67,055,991	82%	8,754,416	11%	81,392,379
2002	386,384	1%	1,583	<1%	806,447	1%	3,242,516	6%	45,331,007	79%	7,455,007	13%	57,222,944
2003	416,684	1%	1,188	<1%	1,525,356	2%	2,498,375	4%	52,515,632	77%	11,115,085	16%	68,072,320
2004	483,330	1%	697	<1%	2,037,745	3%	3,084,663	5%	45,333,012	73%	11,371,623	18%	62,311,070
2005	441,363	1%	6,629	<1%	1,607,835	2%	3,002,784	4%	59,182,242	84%	6,427,530	9%	70,668,383
2006	366,862	1%	4,779	<1%	1,333,496	5%	2,091,875	7%	11,695,411	40%	14,002,610	47%	29,495,033
2007	353,997	1%	5,233	<1%	1,904,664	3%	2,062,603	4%	44,884,740	77%	9,416,164	16%	58,627,401
<b>2008</b>	<b>235,551</b>	<b>1%</b>	<b>3,446</b>	<b>&lt;1%</b>	<b>422,049</b>	<b>2%</b>	<b>2,365,703</b>	<b>8%</b>	<b>15,986,505</b>	<b>57%</b>	<b>9,023,156</b>	<b>32%</b>	<b>28,036,410</b>
<b>Averages</b>													
1962 to 2007	301,176	1%	-	-	1,391,401	5%	2,063,244	6%	29,644,162	74%	5,146,428	13%	38,547,771
1998 to 2007	335,235	1%	2,880	<1%	1,501,622	3%	2,786,009	5%	46,669,515	71%	11,507,956	21%	62,803,215
Max. harvest and year	483,330	2004	6,629	2005	3,190,960	1993	5,721,700	1994	77,848,284	1999	16,043,397	1996	97,768,275
Min. harvest and year	195,048	1999	166	1983	244,855	1975	427,457	1975	3,109,343	1967	560,595	1969	5,691,033

<sup>a</sup> Annual Chinook salmon harvest is reported by troll season, October 1–September 30, since 1979 when the regulatory season was implemented.

<sup>b</sup> Jack Chinook salmon are <= 21".

Table 2.—Number of active limited entry and interim use permits issued and fished in the Southeast Alaska and Yakutat salmon fisheries, from 1975 to 2008. Note: Data listed from the onset of the salmon limited entry program for most gear types in 1975.

Year	Number of Permits <sup>a</sup>									
	Purse Seine		Drift Gillnet		Set Gillnet		Hand Troll		Power Troll	
	Issued <sup>b</sup>	Fished <sup>c</sup>	Issued <sup>b</sup>	Fished <sup>c</sup>	Issued <sup>b</sup>	Fished <sup>c</sup>	Issued <sup>b</sup>	Fished <sup>c</sup>	Issued <sup>b</sup>	Fished <sup>c</sup>
1975	475	287	511	443	215	141	2,087	1101	1,079	760
1976	418	280	487	432	159	133	2,082	1243	998	742
1977	414	325	474	438	159	144	2,953	1852	970	746
1978	420	376	491	474	164	155	3,923	2644	976	817
1979	418	319	491	449	167	155	3,702	2225	980	816
1980	418	335	489	445	167	159	2,436	1689	974	845
1981	418	364	487	447	167	158	2,048	1170	970	798
1982	421	370	487	431	164	147	1,914	1141	968	819
1983	421	338	481	432	165	145	2,150	962	968	814
1984	423	383	481	437	164	140	2,147	869	963	798
1985	420	368	485	446	164	148	2,030	914	963	837
1986	420	368	488	460	164	154	1,983	811	957	827
1987	420	381	486	465	165	154	1,937	766	957	829
1988	420	394	485	470	165	159	1,870	794	956	843
1989	420	365	485	466	166	160	1,817	698	955	842
1990	420	360	486	465	166	158	1,782	696	956	839
1991	420	383	485	465	168	161	1,741	702	959	856
1992	420	354	485	467	170	159	1,689	647	957	842
1993	419	382	482	460	171	157	1,633	601	956	841
1994	418	390	483	446	171	150	1,579	549	954	807
1995	418	373	483	452	171	147	1,540	460	954	819
1996	417	357	484	439	171	139	1,501	412	967	738
1997	416	351	482	423	170	141	1,459	388	968	744
1998	416	377	479	422	170	142	1,409	305	967	734
1999	416	359	481	430	170	128	1,370	338	965	721
2000	416	356	480	422	170	125	1,329	316	963	713
2001	415	345	482	433	169	114	1,295	307	965	703
2002	415	273	482	391	167	87	1,247	254	965	666
2003	416	235	477	375	167	104	1,189	266	965	640
2004	414	209	478	348	168	112	1,139	325	961	692
2005	415	232	478	368	168	114	1,108	353	961	717
2006	414	234	477	361	167	105	1,104	370	961	740
2007	415	242	476	391	166	121	1,084	376	961	743
<b>2008</b>	<b>380</b>	<b>213</b>	<b>475</b>	<b>395</b>	<b>165</b>	<b>128</b>	<b>1,066</b>	<b>372</b>	<b>961</b>	<b>745</b>
<b>Average</b>										
1998–2007	415	286	479	394	168	115	1,227	321	963	707

<sup>a</sup> Data is provided since the salmon limited entry permits first issued in 1975 for seine, gillnet, setnet, and power troll. Permits for hand troll were first issued in 1982.

<sup>b</sup> Permits issued data provided by Commercial Fisheries Entry Commission ([www.cfec.state.ak.us](http://www.cfec.state.ak.us))

<sup>c</sup> Permits fished data provided by ADF&G, Commercial Fisheries, Region 1 Integrated Fisheries Database.

Table 3.—Southeast Alaska region commercial salmon harvest, in numbers, by harvest type and fishery, 2008.

<b>Fishery</b>	<b>Chinook<sup>a</sup></b>	<b>Jacks</b>	<b>Sockeye</b>	<b>Coho</b>	<b>Pink</b>	<b>Chum</b>	<b>Total</b>
<b>Total Purse Seine</b>	15,502	530	74,389	218,388	14,304,263	3,208,238	17,821,310
Southern Purse Seine							
Total <sup>b</sup>	7,681	233	68,758	190,350	12,322,831	882,609	13,472,462
Traditional	598	166	67,192	187,380	12,292,861	672,458	13,220,655
Hatchery Terminal	7,083	67	1,566	2,970	29,970	210,151	251,807
Northern Purse Seine							
Total <sup>c</sup>	7,821	297	5,631	28,038	1,981,432	2,325,629	4,348,848
Traditional	83	33	3,986	18,747	1,795,623	257,664	2,076,136
Hatchery Terminal	7,738	264	1,645	9,291	185,809	2,067,965	2,272,712
<b>Total Drift Gillnet</b>	29,158	2,885	264,877	337,447	560,609	2,588,989	3,783,965
Tree Point	1,880	68	34,113	95,992	271,166	239,850	643,069
Prince of Wales	1,049	570	30,533	116,074	90,217	102,156	340,599
Stikine	13,049	1,550	35,679	34,479	18,105	81,876	184,738
Taku-Snettisham	1,721	472	116,693	37,349	90,162	774,095	1,020,492
Lynn Canal	460	69	34,535	46,115	10,658	605,887	697,724
Drift Gillnet Hatchery Terminal	10,999	156	13,324	7,438	80,301	785,125	897,343
<b>Set Gillnet</b>	844	6	35,227	153,712	65,227	546	255,562
<b>Total Troll</b>	146,653	—	1,253	1,291,821	28,123	60,829	1,528,699
Hand Troll Total	14,451	—	155	82,272	1,533	863	99,277
Traditional	6,503	—	154	81,360	1,435	383	89,835
Hatchery Terminal	3,358	—	0	708	22	352	4,442
Experimental	4,590	—	1	204	76	128	5,000
Power Troll Total	132,202	—	1,098	1,209,549	26,590	59,966	1,429,422
Traditional	99,038	—	1,073	1,189,520	25,121	55,254	1,370,006
Hatchery Terminal	1,134	—	1	18,577	12	186	19,910
Experimental	32,030	—	24	1,452	1,457	4,526	39,506
<b>Total Annette Island Reservation</b>	741	2	5,770	37,294	926,190	153,233	1,123,230
Purse Seine	52	0	1,957	7,452	626,445	21,987	657,893
Drift Gillnet	606	2	3,813	28,684	299,685	131,246	464,036
Troll	83	—	0	1,158	60	0	1,301
Hand Troll	55	—	0	1,158	60	0	1,273
Power Troll	28	—	0	0	0	0	28
<b>Hatchery Cost Recovery</b>	41,725	0	39,728	321,225	95,675	2,981,018	3,479,371
<b>Miscellaneous<sup>d</sup></b>	928	3	805	1,127	6,418	8,583	17,864
Southern SE Area Totals <sup>e</sup>	75,058	2,503	176,166	926,032	13,638,249	2,220,878	17,038,886
Northern SE Area Totals <sup>f</sup>	154,838	937	210,586	1,243,452	2,282,829	6,779,968	10,672,610
Yakutat Area Totals <sup>g</sup>	5,655	6	35,297	191,530	65,427	590	298,505
<b>Region Totals</b>	<b>235,551</b>	<b>3,446</b>	<b>422,049</b>	<b>2,361,014</b>	<b>15,986,505</b>	<b>9,001,436</b>	<b>28,010,001</b>

<sup>a</sup> Harvest accounting period for the Chinook salmon season goes from October 1, 2007 through September 30, 2008.

<sup>b</sup> Districts 101–108.

<sup>c</sup> Districts 109–114.

<sup>d</sup> Includes salmon that were confiscated, caught in sport fish derbies, or commercial test fisheries, and sold.

<sup>e</sup> Districts 101–108, 150, and 152 (troll fishery Oct. 1–Sept 30).

<sup>f</sup> Districts 109–116, 154, 156, and 157 (troll fishery Oct. 1–Sept 30).

<sup>g</sup> Districts 181, 182, 183, 185, 186, 189, 191, 192 (troll fishery Oct. 1–Sept 30).



Table 4.–Southeast Alaska region annual commercial total salmon harvest by harvest type, in numbers and percent, from 1980 to 2008.

Year <sup>a</sup>	Seine		Driftnet		Setnet		Troll		Annette Island		Hatchery <sup>b</sup>		Miscellaneous <sup>c</sup>		Total
	Catch	%	Catch	%	Catch	%	Catch	%	Catch	%	Catch	%	Catch	%	Catch
1980	13,579,693	73%	2,179,19	12%	445,33	2%	1,283,11	7%	1,191,723	6%	752	<1%	10,177	<1%	18,689,98
1981	17,472,456	77%	2,094,80	9%	428,33	2%	1,705,41	8%	729,389	3%	137,749	1%	6,931	<1%	22,575,08
1982	23,750,598	81%	1,976,16	7%	379,36	1%	2,069,31	7%	1,227,906	4%	20,639	<1%	8,413	<1%	29,432,40
1983	35,376,038	83%	2,527,51	6%	271,59	1%	2,073,00	5%	2,091,874	5%	143,178	<1%	10,251	<1%	42,493,45
1984	24,332,522	76%	3,132,87	10%	337,98	1%	1,979,62	6%	1,736,351	5%	650,799	2%	15,915	<1%	32,186,06
1985	50,238,448	84%	4,117,02	7%	467,77	1%	2,839,24	5%	1,611,119	3%	640,062	1%	35,718	<1%	59,949,39
1986	46,156,636	84%	3,161,17	6%	268,17	<1%	2,605,37	5%	2,047,763	4%	367,868	1%	35,458	<1%	54,642,44
1987	8,691,654	54%	3,016,76	19%	413,94	3%	1,792,46	11%	538,333	3%	1,642,71	10%	90,459	1%	16,186,33
1988	11,274,603	64%	2,607,41	15%	518,45	3%	1,348,28	8%	1,058,584	6%	645,811	4%	61,563	<1%	17,514,71
1989	54,320,898	82%	4,450,69	7%	580,47	1%	3,511,69	5%	2,691,297	4%	444,565	1%	43,401	<1%	66,043,03
1990	30,330,838	76%	2,917,51	7%	530,82	1%	2,963,17	7%	1,727,293	4%	1,414,92	4%	45,422	<1%	39,929,98
1991	62,191,634	88%	2,803,39	4%	404,41	1%	2,447,04	3%	1,127,702	2%	1,811,16	3%	68,797	<1%	70,854,14
1992	34,808,120	75%	3,832,02	8%	632,42	1%	2,894,86	6%	1,190,707	3%	3,094,60	7%	45,990	<1%	46,498,73
1993	60,196,878	83%	3,946,44	5%	598,61	1%	4,075,69	6%	1,725,815	2%	1,726,82	2%	50,144	<1%	72,320,42
1994	60,075,945	79%	4,255,75	6%	570,97	1%	4,948,77	7%	725,117	1%	5,386,83	7%	76,180	<1%	76,039,58
1995	51,650,711	80%	4,885,90	8%	514,75	1%	2,907,37	5%	2,165,624	3%	2,374,54	4%	53,726	<1%	64,552,63
1996	72,547,199	84%	4,054,10	5%	474,78	1%	3,277,93	4%	1,066,239	1%	5,352,63	6%	71,534	<1%	86,844,43
1997	32,418,643	71%	3,861,43	8%	530,58	1%	2,313,46	5%	649,343	1%	5,655,77	12%	91,387	<1%	45,520,64
1998	49,057,331	78%	4,332,83	7%	365,03	1%	2,213,99	4%	1,070,302	2%	5,700,97	9%	89,256	<1%	62,829,73
1999	81,768,382	84%	4,347,19	4%	351,39	<1%	3,039,97	3%	1,068,721	1%	7,053,48	7%	139,129	<1%	97,768,27
2000	27,180,692	69%	3,918,77	10%	338,12	1%	1,953,98	5%	1,128,736	3%	5,028,36	13%	95,943	<1%	39,644,61
2001	67,965,608	84%	4,141,30	5%	382,06	<1%	2,734,66	3%	2,224,126	3%	3,854,84	5%	89,800	<1%	81,392,40
2002	45,891,149	80%	3,129,10	5%	331,84	1%	1,845,76	3%	1,548,231	3%	4,378,60	8%	98,216	<1%	57,222,91
2003	55,331,699	81%	3,926,65	6%	281,52	<1%	2,004,82	3%	674,026	1%	5,759,98	8%	93,598	<1%	68,072,32
2004	49,621,064	80%	3,914,56	6%	312,70	1%	2,503,06	4%	876,978	1%	4,978,26	8%	104,429	<1%	62,311,07
2005	59,823,736	85%	3,832,64	5%	223,83	<1%	2,670,35	4%	706,778	1%	3,264,07	5%	146,956	<1%	70,668,38
2006	16,281,579	55%	4,796,02	16%	315,89	1%	1,867,12	6%	475,603	2%	5,681,16	19%	77,642	<1%	29,495,03
2007	46,460,911	79%	4,175,95	7%	405,18	1%	1,947,11	3%	1,092,752	2%	4,340,58	7%	204,904	<1%	58,627,40
<b>2008</b>	<b>17,821,310</b>	<b>64%</b>	<b>3,783,96</b>	<b>13%</b>	<b>255,56</b>	<b>1%</b>	<b>1,528,69</b>	<b>5%</b>	<b>1,123,230</b>	<b>4%</b>	<b>3,505,78</b>	<b>13%</b>	<b>17,864</b>	<b>&lt;1%</b>	<b>28,036,41</b>
<b>Averages</b>															
1962–2007	30,752,908	77%	2,771,435	9%	352,348	1%	1,943,635	6%	908,667	2%	–	–	–	–	38,544,496
1998–2007	49,938,215	78%	4,051,506	7%	330,761	1%	2,278,087	4%	1,086,625	2%	5,004,034	9%	113,987	<1%	62,803,215
<b>Max/Year</b>	81,768,382	1999	4,885,907	1995	632,425	1992	4,948,777	1994	2,691,297	1989	7,053,481	1999	204,904	2007	97,768,275
<b>Min /Year</b>	3,929,881	1975	868,518	1975	166,361	1970	582,077	1975	10,816	1967	752	1980	6,931	1981	5,688,333

<sup>a</sup> Salmon harvest is reported by calendar year except for the troll fishery. Troll is reported by season (Oct 1–Sept 30) beginning October 1, 1979 for the 1980 season.

<sup>b</sup> Includes salmon caught and sold in private, state and federal hatchery's fisheries and carcass sales.

<sup>c</sup> Includes salmon that were confiscated, caught in sport fish derbies, or commercial test fisheries, and sold.

Table 5.—Southeast Alaska region annual commercial Chinook salmon harvest by harvest type, in numbers and percent, from 1980 to 2008.

Year	Seine		Driftnet		Setnet		Troll		Annette Island		Hatchery		Miscellaneous <sup>a</sup>		Total Catch
	Catch	%	Catch	%	Catch	%	Catch	%	Catch	%	Catch	%	Catch	%	
1980	11,701	4%	5,433	2%	2,800	1%	303,632	94%	180	<1%	—	—	611	<1%	324,357
1981	10,264	4%	6,317	2%	2,069	1%	248,785	93%	301	<1%	—	—	748	<1%	268,484
1982	30,529	11%	14,710	5%	1,456	1%	241,938	83%	838	<1%	—	—	963	<1%	290,434
1983	13,560	5%	4,598	2%	976	<1%	269,821	93%	367	<1%	—	—	6	<1%	289,328
1984	20,762	8%	10,338	4%	1,062	<1%	235,694	87%	237	<1%	937	<1%	1,063	<1%	270,093
1985	21,535	8%	10,386	4%	1,231	<1%	216,049	85%	713	<1%	2,658	1%	1,121	<1%	253,693
1986	13,271	5%	8,441	3%	1,428	1%	237,699	90%	121	<1%	1,093	<1%	1,537	1%	263,590
1987	6,284	2%	8,430	3%	2,072	1%	242,529	92%	565	<1%	2,376	1%	932	<1%	263,188
1988	12,165	5%	9,079	3%	893	<1%	231,110	87%	941	<1%	9,649	4%	1,044	<1%	264,881
1989	17,103	6%	9,579	3%	798	<1%	235,609	83%	892	<1%	19,680	7%	1,395	<1%	285,056
1990	14,777	4%	14,693	4%	663	<1%	287,100	83%	1,840	1%	26,692	8%	390	<1%	346,155
1991	17,107	5%	18,457	6%	1,747	1%	263,153	79%	4,015	1%	25,995	8%	703	<1%	331,177
1992	20,320	9%	11,285	5%	2,025	1%	183,353	78%	1,210	1%	16,723	7%	1,371	1%	236,287
1993	12,291	4%	18,011	6%	1,311	<1%	226,561	80%	639	<1%	23,246	8%	2,752	1%	284,811
1994	21,089	9%	16,735	7%	3,820	2%	186,299	75%	230	<1%	17,750	7%	1,513	1%	247,436
1995	26,777	12%	13,342	6%	9,374	4%	138,117	63%	133	<1%	31,405	14%	1,281	1%	220,429
1996	23,155	11%	9,982	5%	4,854	2%	141,447	66%	243	<1%	33,496	16%	1,410	1%	214,587
1997	10,841	4%	11,006	4%	3,264	1%	246,402	81%	505	<1%	30,144	10%	2,294	1%	304,456
1998	16,167	7%	5,937	3%	2,804	1%	192,066	82%	304	<1%	15,943	7%	1,390	1%	234,611
1999	20,849	11%	8,983	5%	5,108	3%	146,218	74%	744	<1%	15,100	8%	1,093	1%	198,095
2000	22,044	9%	13,475	6%	2,460	1%	158,791	68%	4,769	2%	31,637	14%	719	<1%	233,895
2001	22,314	9%	13,644	6%	2,631	1%	153,280	62%	4,156	2%	49,028	20%	783	<1%	245,836
2002	18,725	5%	10,216	3%	2,510	1%	325,368	84%	1,818	<1%	28,445	7%	859	<1%	387,941
2003	25,236	6%	10,704	3%	3,842	1%	330,719	79%	780	<1%	45,723	11%	868	<1%	417,872
2004	39,984	8%	20,148	4%	2,734	1%	354,607	73%	1,914	<1%	62,470	13%	2,170	<1%	484,027
2005	20,421	5%	55,754	12%	766	<1%	338,024	75%	1,697	<1%	29,408	7%	1,922	<1%	447,992
2006	25,970	7%	47,202	13%	1,208	<1%	282,258	76%	806	<1%	12,794	3%	1,403	<1%	371,641
2007	28,398	8%	30,067	8%	1,562	<1%	267,988	75%	1,232	<1%	28,167	8%	1,817	1%	359,231
<b>2008</b>	<b>16,032</b>	<b>7%</b>	<b>32,043</b>	<b>13%</b>	<b>850</b>	<b>&lt;1%</b>	<b>146,673</b>	<b>61%</b>	<b>743</b>	<b>&lt;1%</b>	<b>41,725</b>	<b>17%</b>	<b>931</b>	<b>&lt;1%</b>	<b>238,997</b>
<b>Averages</b>															
1962–2007	15,412	5%	14,043	5%	2,273	1%	257,113	85%	721	<1%	—	—	—	—	302,491
1998–2007	24,011	8%	21,613	6%	2,563	1%	254,932	75%	1,822	<1%	31,872	10%	1,302	<1%	338,114
<b>Max. /Year</b>	39,984	2004	55,754	2005	9,374	1995	375,427	1978	4,769	2000	62,470	2004	2,752	1993	484,027
<b>Min. /Year</b>	1,428	1976	4,598	1983	663	1990	138,117	1995	3	1966,1975	937	1984	6	1983	196,650

Note: Chinook salmon harvest is reported by season (Oct. 1–Sept 30) beginning October 1, 1979 for the 1980 season.

<sup>a</sup> Includes confiscation, test fisheries, sanctioned sport derbies where fish were sold.

Table 6.–Southeast Alaska region annual commercial total sockeye salmon harvest by harvest type, in numbers and percent, from 1980 to 2008.

Year	Seine		Driftnet		Setnet		Troll		Annette Island		Hatchery		Miscellaneous <sup>a</sup>		Total
	Catch	%	Catch	%	Catch	%	Catch	%	Catch	%	Catch	%	Catch	%	Catch
1980	510,956	46%	408,296	37%	159,564	14%	2,921	<1%	23,734	2%	–	–	568	<1%	1,106,039
1981	438,921	41%	438,824	41%	149,273	14%	7,476	1%	37,528	4%	1	<1%	178	<1%	1,072,201
1982	445,385	30%	749,348	51%	212,882	14%	2,458	<1%	70,317	5%	1	<1%	205	<1%	1,480,596
1983	778,195	50%	586,574	38%	152,571	10%	7,974	1%	32,478	2%	1	<1%	1,218	<1%	1,559,011
1984	457,160	38%	593,319	49%	102,565	8%	9,563	1%	49,740	4%	7	<1%	3,412	<1%	1,215,766
1985	716,342	38%	830,238	45%	234,896	13%	7,806	<1%	67,946	4%	18	<1%	6,569	<1%	1,863,815
1986	587,730	41%	658,611	46%	150,770	10%	6,885	<1%	36,510	3%	6	<1%	2,474	<1%	1,442,986
1987	310,282	23%	736,200	53%	259,989	19%	9,722	1%	54,186	4%	1,121	<1%	6,217	<1%	1,377,717
1988	654,748	45%	600,925	41%	162,168	11%	9,339	1%	30,979	2%	85	<1%	2,173	<1%	1,460,417
1989	823,185	39%	893,976	42%	329,454	16%	20,173	1%	50,496	2%	66	<1%	7,490	<1%	2,124,840
1990	965,918	45%	767,492	36%	344,606	16%	9,175	<1%	59,644	3%	75	<1%	8,806	<1%	2,155,716
1991	1,051,269	51%	711,874	34%	229,903	11%	9,806	<1%	45,130	2%	1,478	<1%	14,126	1%	2,063,586
1992	1,336,889	50%	922,069	35%	314,175	12%	22,854	1%	61,169	2%	2,108	<1%	7,158	<1%	2,666,422
1993	1,690,471	53%	1,021,899	32%	345,887	11%	25,337	1%	95,063	3%	7,545	<1%	4,758	<1%	3,190,960
1994	1,430,610	60%	686,792	29%	206,760	9%	21,777	1%	41,615	2%	3,322	<1%	1,613	<1%	2,392,489
1995	907,120	51%	640,971	36%	153,723	9%	27,323	2%	55,503	3%	8,448	<1%	2,243	<1%	1,795,331
1996	1,514,523	54%	1,026,591	37%	209,029	7%	11,024	<1%	29,859	1%	6,636	<1%	2,186	<1%	2,799,848
1997	1,578,021	64%	645,516	26%	110,078	4%	39,428	2%	41,365	2%	58,879	2%	4,107	<1%	2,477,394
1998	732,790	53%	501,291	36%	77,189	6%	6,476	<1%	16,554	1%	34,590	3%	6,468	<1%	1,375,358
1999	425,298	37%	545,681	47%	128,751	11%	5,730	<1%	21,867	2%	24,075	2%	9,328	1%	1,160,730
2000	489,221	40%	496,614	40%	99,182	8%	4,467	<1%	22,529	2%	107,244	9%	10,097	1%	1,229,354
2001	1,013,151	50%	687,476	34%	141,449	7%	8,992	<1%	41,245	2%	138,233	7%	4,684	<1%	2,035,230
2002	154,478	19%	464,138	58%	112,656	14%	1,247	<1%	34,821	4%	36,859	5%	2,248	<1%	806,447
2003	681,418	45%	598,679	39%	154,384	10%	4,596	<1%	7,806	1%	75,869	5%	2,604	<1%	1,525,356
2004	900,557	44%	798,096	39%	88,282	4%	5,009	<1%	30,743	2%	210,665	10%	4,393	<1%	2,037,745
2005	898,515	56%	462,209	29%	79,221	5%	13,277	1%	13,285	1%	140,245	9%	1,083	<1%	1,607,835
2006	413,938	31%	625,667	47%	138,510	10%	8,084	1%	20,908	2%	124,109	9%	2,280	<1%	1,333,496
2007	1,063,704	56%	501,627	26%	236,289	12%	6,439	<1%	19,579	1%	74,419	4%	2,607	<1%	1,904,664
<b>2008</b>	<b>74,389</b>	<b>18%</b>	<b>264,877</b>	<b>63%</b>	<b>35,227</b>	<b>8%</b>	<b>1,253</b>	<b>&lt;1%</b>	<b>5,770</b>	<b>1%</b>	<b>39,728</b>	<b>9%</b>	<b>805</b>	<b>&lt;1%</b>	<b>422,049</b>
<b>Averages</b>															
1962–2007	336,648	18%	250,728	13%	141,753	7%	1,201,211	58%	23,577	1%	–	–	–	–	2,062,970
1998–2007	359,173	13%	311,371	11%	147,866	5%	1,610,795	58%	40,039	1%	312,941	11%	3,823	<1%	2,786,009
<b>Max. /Year</b>	967,691	1994	698,125	1994	343,843	1994	3,467,541	1994	75,384	1986	749,889	2002	6,753	1994	5,721,700
<b>Min. /Year</b>	70,193	1975	65,101	1969	30,279	1970	214,219	1975	324	1973	4,220	1983	23	1980	424,757

<sup>a</sup>Includes salmon confiscated, harvested and sold in sport derbies, or commercial test fisheries.

Table 7.–Southeast Alaska region annual commercial total coho salmon harvest by harvest type, in numbers and percent, from 1980 to 2008.

Year	Seine		Driftnet		Setnet		Troll		Annette Island		Hatchery		Miscellaneous <sup>a</sup>		Total
	Catch	%	Catch	%	Catch	%	Catch	%	Catch	%	Catch	%	Catch	%	Catch
1980	184,570	17%	109,516	10%	119,684	11%	697,181	62%	5,263	<1%	–	–	23	<1%	1,116,237
1981	237,402	17%	114,535	8%	132,579	10%	861,040	63%	7,839	1%	5,003	<1%	550	<1%	1,358,948
1982	397,349	19%	194,424	9%	148,857	7%	1,315,977	63%	14,312	1%	12,514	1%	2,898	<1%	2,086,331
1983	338,881	18%	210,332	11%	81,573	4%	1,276,370	66%	17,498	1%	4,220	<1%	199	<1%	1,929,073
1984	350,017	18%	191,023	10%	182,256	10%	1,133,357	59%	25,125	1%	26,856	1%	1,621	<1%	1,910,255
1985	417,852	16%	309,380	12%	202,772	8%	1,599,227	62%	30,849	1%	33,386	1%	3,696	<1%	2,597,162
1986	568,410	17%	395,889	12%	92,097	3%	2,127,695	62%	75,384	2%	143,799	4%	1,328	<1%	3,404,602
1987	121,974	8%	165,249	11%	124,407	8%	1,041,015	67%	35,790	2%	50,465	3%	4,448	<1%	1,543,348
1988	157,003	15%	163,808	16%	205,926	20%	500,208	48%	8,681	1%	7,539	1%	3,503	<1%	1,046,668
1989	330,989	15%	234,423	11%	176,773	8%	1,415,517	64%	23,870	1%	18,921	1%	3,551	<1%	2,204,044
1990	372,471	13%	351,039	12%	148,891	5%	1,832,414	64%	35,104	1%	125,762	4%	2,536	<1%	2,868,217
1991	405,592	13%	545,376	17%	166,731	5%	1,718,318	54%	63,146	2%	294,490	9%	3,350	<1%	3,197,003
1992	488,399	13%	645,159	17%	290,095	8%	1,929,832	52%	71,282	2%	268,913	7%	2,529	<1%	3,696,209
1993	473,138	13%	417,681	11%	237,446	6%	2,395,874	65%	32,690	1%	106,476	3%	2,130	<1%	3,665,435
1994	967,691	17%	698,125	12%	343,843	6%	3,467,541	61%	48,900	1%	188,847	3%	6,753	<1%	5,721,700
1995	617,777	18%	415,158	12%	295,030	9%	1,750,167	52%	51,452	2%	215,431	6%	663	<1%	3,345,678
1996	441,457	14%	368,570	12%	227,802	7%	1,906,312	60%	42,044	1%	166,941	5%	3,825	<1%	3,156,951
1997	183,693	9%	131,240	7%	322,776	16%	1,170,288	59%	30,846	2%	135,179	7%	405	<1%	1,974,427
1998	464,716	16%	412,446	14%	197,629	7%	1,636,711	55%	39,467	1%	234,675	8%	3,436	<1%	2,989,080
1999	416,415	11%	351,598	10%	187,055	5%	2,272,461	63%	49,365	1%	349,200	10%	4,140	<1%	3,630,234
2000	206,479	11%	167,623	9%	170,948	9%	1,125,219	57%	18,189	1%	268,171	14%	399	<1%	1,957,028
2001	542,643	16%	294,441	9%	205,344	6%	1,845,609	56%	57,055	2%	352,904	11%	2,936	<1%	3,300,932
2002	469,680	14%	436,612	13%	200,888	6%	1,315,080	41%	64,880	2%	749,889	23%	5,487	<1%	3,242,516
2003	394,168	16%	434,234	17%	74,343	3%	1,223,458	49%	39,879	2%	328,650	13%	3,643	<1%	2,498,375
2004	399,267	13%	316,192	10%	196,930	6%	1,914,945	62%	30,883	1%	221,721	7%	4,725	<1%	3,084,663
2005	341,295	11%	272,873	9%	82,887	3%	2,034,874	68%	35,204	1%	231,341	8%	4,310	<1%	3,002,784
2006	109,498	5%	252,449	12%	86,085	4%	1,362,915	65%	30,287	1%	246,062	12%	4,579	<1%	2,091,875
2007	247,568	12%	175,246	8%	76,550	4%	1,376,679	67%	35,185	2%	146,797	7%	4,578	<1%	2,062,603
<b>2008</b>	<b>218,388</b>	<b>9%</b>	<b>337,447</b>	<b>14%</b>	<b>153,712</b>	<b>6%</b>	<b>1,291,821</b>	<b>54%</b>	<b>45,632</b>	<b>2%</b>	<b>325,914</b>	<b>14%</b>	<b>1,127</b>	<b>&lt;1%</b>	<b>2,374,041</b>
<b>Averages</b>															
1962–2007	336,648	18%	250,728	13%	141,753	7%	1,201,211	58%	23,577	1%	–	–	–	–	2,062,970
1998–2007	359,173	13%	311,371	11%	147,866	5%	1,610,795	58%	40,039	1%	312,941	11%	3,823	<1%	2,786,009
<b>Max./Year</b>	967,691	1994	698,125	1994	343,843	1994	3,467,541	1994	75,384	1986	749,889	2002	6,753	1994	5,721,700
<b>Min./Year</b>	70,193	1975	65,101	1969	30,279	1970	214,219	1975	324	1973	4,220	1983	23	1980	424,757

<sup>a</sup> Includes salmon confiscated, harvested and sold in sport derbies, and commercial test fisheries.

Table 8.–Southeast Alaska region annual commercial total pink salmon harvest by harvest type, in numbers and percent, from 1980 to 2008.

Year	Seine		Driftnet		Setnet		Troll		Annette Island		Hatchery		Miscellaneous <sup>a</sup>		Total Catch
	Catch	%	Catch	%	Catch	%	Catch	%	Catch	%	Catch	%	Catch	%	
1980	11,869,988	82%	1,107,273	8%	143,135	1%	267,213	2%	1,105,482	8%	–	–	7,324	<1%	14,500,415
1981	16,268,867	85%	1,264,900	7%	133,756	1%	579,436	3%	653,409	3%	132,744	1%	5,096	<1%	19,038,208
1982	22,048,891	91%	569,351	2%	9,850	<1%	503,306	2%	1,102,077	5%	7,346	<1%	4,002	<1%	24,244,823
1983	33,666,234	90%	1,209,372	3%	25,278	<1%	498,530	1%	2,017,294	5%	120,688	<1%	8,519	<1%	37,545,915
1984	21,070,834	85%	1,307,853	5%	19,870	<1%	572,949	2%	1,556,298	6%	169,795	1%	8,157	<1%	24,705,756
1985	47,233,196	91%	1,832,570	4%	16,410	<1%	963,395	2%	1,424,695	3%	470,949	1%	18,105	<1%	51,959,320
1986	42,788,318	93%	1,282,418	3%	7,263	<1%	181,706	<1%	1,823,069	4%	61,178	<1%	28,325	<1%	46,172,277
1987	7,018,562	68%	1,359,526	13%	12,920	<1%	486,355	5%	338,763	3%	994,190	10%	70,106	1%	10,280,422
1988	8,825,252	79%	688,750	6%	120,212	1%	519,367	5%	890,272	8%	115,729	1%	47,580	<1%	11,207,162
1989	52,070,066	88%	2,769,875	5%	57,195	<1%	1,771,409	3%	2,550,624	4%	213,371	<1%	27,663	<1%	59,460,203
1990	27,915,150	86%	1,168,061	4%	30,840	<1%	771,665	2%	1,546,186	5%	880,750	3%	29,350	<1%	32,342,002
1991	58,592,358	95%	820,409	1%	3,052	<1%	427,326	1%	933,309	2%	1,112,888	2%	36,997	<1%	61,926,339
1992	29,769,079	85%	1,408,331	4%	18,526	<1%	673,795	2%	954,756	3%	2,111,411	6%	27,400	<1%	34,963,298
1993	53,414,515	93%	1,087,670	2%	9,909	<1%	902,766	2%	1,521,934	3%	332,763	1%	29,793	<1%	57,299,350
1994	51,280,083	90%	1,030,607	2%	12,324	<1%	942,783	2%	498,031	1%	3,459,436	6%	51,613	<1%	57,274,877
1995	43,498,508	91%	1,337,764	3%	54,041	<1%	714,312	1%	1,925,156	4%	411,701	1%	24,024	<1%	47,965,506
1996	61,649,487	95%	615,311	1%	31,295	<1%	812,899	1%	867,799	1%	609,316	1%	43,607	<1%	64,629,714
1997	24,782,485	86%	1,384,200	5%	93,658	<1%	545,308	2%	410,054	1%	1,695,171	6%	64,348	<1%	28,975,224
1998	38,436,679	90%	1,489,395	4%	86,066	<1%	261,104	1%	799,296	2%	1,411,511	3%	51,351	<1%	42,535,402
1999	71,961,636	92%	1,274,672	2%	29,554	<1%	540,859	1%	896,414	1%	3,053,220	4%	91,929	<1%	77,848,284
2000	18,156,691	89%	679,452	3%	64,349	<1%	187,364	1%	918,280	5%	267,913	1%	39,377	<1%	20,313,426
2001	61,951,322	92%	1,568,859	2%	32,230	<1%	258,943	<1%	1,995,215	3%	1,189,294	2%	60,128	<1%	67,055,991
2002	42,137,936	93%	802,290	2%	15,590	<1%	86,399	<1%	1,363,274	3%	853,059	2%	72,459	<1%	45,331,007
2003	49,894,749	95%	1,354,839	3%	48,418	<1%	159,643	<1%	569,512	1%	420,141	1%	68,330	<1%	52,515,632
2004	42,596,809	94%	944,447	2%	23,207	<1%	57,199	<1%	715,774	2%	933,287	2%	62,289	<1%	45,333,012
2005	55,746,479	94%	1,530,243	3%	60,436	<1%	109,584	<1%	598,105	1%	1,004,250	2%	133,145	<1%	59,182,242
2006	10,117,941	87%	744,048	6%	88,864	1%	60,323	1%	263,420	2%	377,353	3%	43,462	<1%	11,695,411
2007	42,078,209	94%	984,250	2%	87,997	<1%	104,325	<1%	846,271	2%	606,443	1%	177,245	<1%	44,884,740
<b>2008</b>	<b>14,304,263</b>	<b>89%</b>	<b>560,609</b>	<b>4%</b>	<b>65,227</b>	<b>&lt;1%</b>	<b>28,123</b>	<b>&lt;1%</b>	<b>926,190</b>	<b>6%</b>	<b>95,675</b>	<b>1%</b>	<b>6,418</b>	<b>&lt;1%</b>	<b>15,986,505</b>
<b>Averages</b>															
1962–2007	26,924,544	89%	977,730	5%	44,881	<1%	374,283	2%	790,520	3%	–	–	–	–	29,641,253
1998–2007	43,307,845	92%	1,137,250	3%	53,671	<1%	182,574	<1%	896,556	2%	1,011,647	2%	79,972	<1%	46,669,515
<b>Max. /Year</b>	71,961,636	1999	2,769,875	1989	151,937	1979	1,771,409	1989	2,550,624	1989	3,459,436	1994	177,245	2007	77,848,284
<b>Min. /Year</b>	2,807,759	1967	205,683	1967	1,405	1966	28,123	2008	6,949	1967	7,346	1982	4,002	1982	3,109,343

<sup>a</sup> Includes salmon confiscated, harvested and sold in sport derbies, and commercial test fisheries.

Table 9.—Southeast Alaska region annual commercial total chum salmon harvest by harvest type, in numbers and percent, from 1980 to 2008.

Year	Seine		Driftnet		Setnet		Troll		Annette Island		Hatchery		Miscellaneous <sup>a</sup>		Total Catch
	Catch	%	Catch	%	Catch	%	Catch	%	Catch	%	Catch	%	Catch	%	
1980	1,002,478	61%	548,674	33%	20,151	1%	12,168	1%	57,064	3%	752	<1%	1,651	<1%	1,642,938
1981	517,002	62%	270,231	32%	10,655	1%	8,680	1%	30,312	4%	1	<1%	359	<1%	837,240
1982	828,444	62%	448,332	34%	6,320	<1%	5,638	<1%	40,362	3%	778	<1%	345	<1%	1,330,219
1983	579,168	49%	516,639	44%	11,195	1%	20,309	2%	24,237	2%	18,269	2%	309	<1%	1,170,126
1984	2,433,749	60%	1,030,346	25%	32,230	1%	28,057	1%	104,951	3%	453,204	11%	1,662	<1%	4,084,199
1985	1,849,523	56%	1,134,446	35%	12,468	<1%	52,770	2%	86,916	3%	133,051	4%	6,227	<1%	3,275,401
1986	2,198,907	65%	815,813	24%	16,616	<1%	51,391	2%	112,679	3%	161,792	5%	1,794	<1%	3,358,992
1987	1,234,552	45%	747,363	27%	14,555	1%	12,843	<1%	109,029	4%	594,563	22%	8,756	<1%	2,721,661
1988	1,625,435	46%	1,144,856	32%	29,256	1%	88,261	2%	127,711	4%	512,809	15%	7,263	<1%	3,535,591
1989	1,079,555	55%	542,846	28%	16,259	1%	68,990	4%	65,415	3%	192,527	10%	3,302	<1%	1,968,894
1990	1,062,522	48%	616,226	28%	5,825	<1%	62,818	3%	84,519	4%	381,645	17%	4,340	<1%	2,217,895
1991	2,125,308	64%	707,277	21%	2,984	<1%	28,438	1%	82,102	2%	376,313	11%	13,621	<1%	3,336,043
1992	3,193,433	65%	845,176	17%	7,604	<1%	85,029	2%	102,290	2%	695,451	14%	7,532	<1%	4,936,515
1993	4,606,463	58%	1,401,186	18%	4,065	<1%	525,158	7%	75,489	1%	1,256,796	16%	10,711	<1%	7,879,868
1994	6,376,472	61%	1,823,497	18%	4,229	<1%	330,377	3%	136,341	1%	1,717,481	17%	14,688	<1%	10,403,085
1995	6,600,529	59%	2,478,672	22%	2,585	<1%	277,453	2%	133,380	1%	1,707,559	15%	25,515	<1%	11,225,693
1996	8,918,577	56%	2,033,650	13%	1,803	<1%	406,256	3%	126,294	1%	4,536,244	28%	20,506	<1%	16,043,330
1997	5,863,603	50%	1,689,474	14%	808	<1%	312,042	3%	166,573	1%	3,736,406	32%	20,233	<1%	11,789,139
1998	9,406,979	60%	1,923,764	12%	1,351	<1%	117,642	1%	214,681	1%	4,004,257	26%	26,611	<1%	15,695,285
1999	8,944,184	60%	2,166,260	15%	928	<1%	74,704	1%	100,331	1%	3,611,886	24%	32,639	<1%	14,930,932
2000	8,306,257	52%	2,561,607	16%	1,185	<1%	478,144	3%	164,969	1%	4,353,396	27%	45,351	<1%	15,910,909
2001	4,436,178	51%	1,576,881	18%	406	<1%	467,837	5%	126,455	1%	2,125,390	24%	21,269	<1%	8,754,416
2002	3,110,330	42%	1,415,849	19%	204	<1%	117,672	2%	83,438	1%	2,710,351	36%	17,163	<1%	7,455,007
2003	4,336,128	39%	1,528,198	14%	542	<1%	286,410	3%	56,049	1%	4,889,605	44%	18,153	<1%	11,115,085
2004	5,684,447	50%	1,835,679	16%	1,555	<1%	171,307	2%	97,664	1%	3,550,119	31%	30,852	<1%	11,371,623
2005	2,817,026	44%	1,511,570	24%	525	<1%	174,596	3%	58,487	1%	1,858,830	29%	6,496	<1%	6,427,530
2006	5,614,232	40%	3,126,663	22%	1,225	<1%	153,545	1%	160,182	1%	4,920,845	35%	25,918	<1%	14,002,610
2007	3,043,032	32%	2,484,769	26%	2,782	<1%	191,680	2%	190,485	2%	3,484,759	37%	18,657	<1%	9,416,164
<b>2008</b>	<b>3,208,238</b>	<b>36%</b>	<b>2,588,989</b>	<b>29%</b>	<b>546</b>	<b>&lt;1%</b>	<b>60,829</b>	<b>1%</b>	<b>157,160</b>	<b>2%</b>	<b>3,002,738</b>	<b>33%</b>	<b>8,583</b>	<b>&lt;1%</b>	<b>9,027,083</b>
<b>Averages</b>															
1962–2007	2,834,342	60%	996,823	25%	7,428	<1%	103,495	2%	65,694	1%	–	–	–	–	5,146,413
1998–2007	5,569,879	47%	2,013,124	18%	1,070	<1%	223,354	2%	125,274	1%	3,550,944	31%	24,311	<1%	11,507,956
<b>Max. /Year</b>	9,406,979	1998	3,126,663	2006	32,230	1984	525,158	1993	214,681	1998	14,920,845	2006	45,351	2000	16,043,330
<b>Min. /Year</b>	332,514	1969	208,918	1969	204	2002	1,702	1969	226	1973	1	1981	309	1983	560,595

<sup>a</sup> Includes salmon confiscated, harvested and sold in sport derbies, and commercial test fisheries.

Table 10.—Southeast Alaska region salmon exvessel value, harvest, average weight, and price paid per pound by gear and species, 2008.

Statistic / Fishery	Chinook	Sockeye	Coho	Pink	Chum	Total
<b>Exvessel Value in Dollars <sup>a</sup></b>						
Purse Seine <sup>b</sup>	\$510,795	\$522,062	\$980,344	\$14,819,216	\$15,977,025	\$32,809,442
Drift Gillnet	\$1,973,623	\$2,431,306	\$3,725,415	\$560,609	\$14,607,076	\$23,298,029
Setnet	\$34,152	\$317,994	\$1,235,230	\$80,229	\$1,254	\$1,668,858
Troll <sup>c</sup>	\$13,856,157	\$12,585	\$18,641,713	\$25,873	\$393,016	\$32,929,345
Annette Island Reserve <sup>d</sup>	\$28,250	\$46,160	\$382,122	\$866,914	\$964,648	\$2,288,095
Hatchery Cost Recovery	\$1,484,617	\$253,266	\$3,668,488	\$152,697	\$18,160,559	\$23,719,628
Miscellaneous <sup>e</sup>	\$27,785	\$2,645	\$148	\$3,799	\$27,191	\$61,568
<b>Total Value</b>	<b>\$17,915,380</b>	<b>\$3,586,018</b>	<b>\$28,633,460</b>	<b>\$16,509,338</b>	<b>\$50,130,769</b>	<b>\$116,774,966</b>
<b>Salmon Harvest Numbers</b>						
Purse Seine <sup>b</sup>	16,032	74,389	218,388	14,304,263	3,208,238	17,821,310
Drift Gillnet	32,043	264,877	337,447	560,609	2,588,989	3,783,965
Setnet	850	35,227	153,712	65,227	546	255,562
Troll <sup>c</sup>	149,278	1,253	1,291,872	28,123	60,829	1,531,355
Annette Island Reserve <sup>d</sup>	743	5,770	45,632	926,190	157,160	1,135,495
Hatchery Cost Recovery	41,725	39,728	325,914	95,675	3,002,738	3,505,780
Miscellaneous <sup>e</sup>	468	805	232	6,418	8,583	16,506
<b>Total</b>	<b>241,139</b>	<b>422,049</b>	<b>2,373,197</b>	<b>15,986,505</b>	<b>9,027,083</b>	<b>28,049,973</b>
<b>Average Weight in Pounds <sup>f</sup></b>						
Purse Seine <sup>b</sup>	15.5	5.8	6.7	3.7	8.3	—
Drift Gillnet	15.2	6.7	9.2	4.0	9.1	—
Setnet	14.2	5.9	9.8	4.1	8.2	—
Troll <sup>c</sup>	14.9	6.2	7.4	4.0	9.1	—
Annette Island Reserve <sup>d</sup>	15.0	6.4	7.9	3.6	9.9	—
Hatchery Cost Recovery	16.1	5.1	8.4	4.2	8.4	—
Miscellaneous <sup>e</sup>	23.9	5.3	6.4	3.7	8.8	—
<b>Average Exvessel Price Paid Per Pound <sup>g</sup></b>						
Purse Seine <sup>b</sup>	\$2.12	\$1.21	\$0.67	\$0.28	\$0.60	—
Drift Gillnet	\$4.32	\$1.37	\$1.20	\$0.25	\$0.62	—
Setnet	\$2.84	\$1.53	\$0.82	\$0.30	\$0.28	—
Troll <sup>c</sup>	\$6.23	\$1.62	\$1.95	\$0.23	\$0.71	—
Annette Island Reserve <sup>d</sup>	\$2.54	\$1.25	\$1.06	\$0.26	\$0.62	—
Hatchery Cost Recovery	\$2.21	\$1.25	\$1.34	\$0.38	\$0.72	—
Miscellaneous <sup>e</sup>	\$2.50	\$0.62	\$0.10	\$0.16	\$0.36	—

<sup>a</sup> (Number caught) x (average weight) x (average exvessel price). \$61,511 value of Jack Chinook salmon added to Chinook salmon total value. Most Jack Chinook salmon are from drift gillnet fisheries.

<sup>b</sup> Includes jack Chinook salmon < 21".

<sup>c</sup> Harvest accounting period for Chinook salmon for this table is by calendar year.

<sup>d</sup> Annette Island Reserve includes purse seine, drift gillnet, hand and power troll gear types.

<sup>e</sup> Includes salmon that were confiscated, harvested in sport fish derbies, or commercial test fisheries, and sold.

<sup>f</sup> (Total pounds for all fish tickets (where pounds > 0)) / (total number fish for all tickets (where number > 0)).

<sup>g</sup> (Total value for all fish tickets (where value > 0)) / (total pounds for all fish tickets (where pounds > 0)).

Table 11.—Southeast Alaska region total salmon exvessel values (in dollars), by species, from 1988 to 2008.

Year	Chinook <sup>a</sup>	Sockeye	Coho	Pink	Chum	Total
<b>Exvessel Value calculated using 2008 Consumer Price Index<sup>b</sup></b>						
(historical exvessel \$\$ = past\$ (current CPI / past CPI))						
1988	\$28,020,859	\$43,339,015	\$39,121,833	\$45,617,149	\$57,722,487	\$213,821,342
1989	\$16,271,082	\$38,137,088	\$22,006,816	\$132,097,838	\$15,096,043	\$223,608,867
1990	\$17,520,866	\$34,153,137	\$35,749,717	\$52,503,306	\$15,971,617	\$155,898,643
1991	\$16,488,237	\$16,967,143	\$30,758,174	\$34,905,240	\$14,058,878	\$113,177,672
1992	\$12,068,397	\$38,993,649	\$43,631,715	\$27,073,347	\$26,774,947	\$148,542,055
1993	\$10,527,610	\$23,547,324	\$29,598,758	\$35,689,709	\$34,522,103	\$133,885,501
1994	\$9,458,009	\$22,311,719	\$43,293,993	\$42,357,915	\$29,423,414	\$146,845,049
1995	\$7,036,596	\$16,943,690	\$23,099,093	\$38,099,184	\$40,883,412	\$126,061,976
1996	\$6,200,252	\$25,998,414	\$19,338,279	\$18,719,723	\$26,760,983	\$97,017,652
1997	\$10,014,052	\$18,878,313	\$15,384,310	\$16,496,823	\$32,994,774	\$93,768,271
1998	\$5,791,685	\$10,770,747	\$16,632,625	\$24,174,160	\$23,189,517	\$80,558,734
1999	\$5,415,189	\$10,007,565	\$23,219,301	\$35,028,306	\$24,125,063	\$97,795,424
2000	\$8,247,916	\$8,956,316	\$12,203,095	\$10,564,161	\$52,477,940	\$92,449,427
2001	\$7,266,710	\$12,042,977	\$14,284,424	\$33,292,662	\$38,431,432	\$105,318,206
2002	\$7,438,422	\$4,135,238	\$12,643,313	\$11,655,488	\$18,114,103	\$53,986,564
2003	\$9,110,011	\$9,055,658	\$13,164,727	\$13,041,264	\$17,084,710	\$61,456,369
2004	\$16,496,140	\$11,487,567	\$21,384,317	\$13,189,667	\$22,103,215	\$84,660,906
2005	\$15,365,839	\$9,739,267	\$10,617,422	\$21,219,701	\$15,988,915	\$72,931,145
2006	\$20,100,018	\$8,831,791	\$21,532,706	\$6,300,649	\$41,033,357	\$97,798,520
2007	\$18,462,201	\$13,779,960	\$16,229,404	\$25,418,184	\$28,844,978	\$102,734,726
<b>2008</b>	<b>\$17,915,380</b>	<b>\$3,586,018</b>	<b>\$28,633,460</b>	<b>\$16,509,338</b>	<b>\$50,130,769</b>	<b>\$116,774,966</b>
<b>Exvessel Value in Harvest Year Dollars</b>						
1988	\$15,339,671	\$23,725,405	\$21,416,761	\$24,972,541	\$31,599,458	\$117,053,836
1989	\$9,336,583	\$21,883,615	\$12,627,831	\$75,799,659	\$8,662,329	\$128,310,017
1990	\$10,596,953	\$20,656,467	\$21,622,109	\$31,754,998	\$9,659,938	\$94,290,465
1991	\$10,392,049	\$10,693,889	\$19,385,969	\$21,999,742	\$8,860,896	\$71,332,545
1992	\$7,835,327	\$25,316,368	\$28,327,602	\$17,577,191	\$17,383,457	\$96,439,945
1993	\$7,039,592	\$15,745,602	\$19,792,069	\$23,864,960	\$23,084,206	\$89,526,427
1994	\$6,486,311	\$15,301,397	\$29,691,060	\$29,049,097	\$20,178,604	\$100,706,469
1995	\$4,962,465	\$11,949,310	\$16,290,325	\$26,868,938	\$28,832,477	\$88,903,515
1996	\$4,501,758	\$18,876,421	\$14,040,760	\$13,591,651	\$19,430,092	\$70,440,683
1997	\$7,437,633	\$14,021,293	\$11,426,229	\$12,252,514	\$24,505,866	\$69,643,534
1998	\$4,368,601	\$8,124,250	\$12,545,797	\$18,234,290	\$17,491,585	\$60,764,523
1999	\$4,174,827	\$7,715,308	\$17,900,864	\$27,004,988	\$18,599,159	\$75,395,146
2000	\$6,572,449	\$7,136,946	\$9,724,180	\$8,418,176	\$41,817,665	\$73,669,416
2001	\$5,955,336	\$9,869,662	\$11,706,610	\$27,284,559	\$31,495,970	\$86,312,137
2002	\$6,192,440	\$3,442,560	\$10,525,480	\$9,703,122	\$15,079,879	\$44,943,481
2003	\$7,756,871	\$7,710,591	\$11,209,327	\$11,104,202	\$14,547,062	\$52,328,053
2004	\$14,419,963	\$10,041,761	\$18,692,922	\$11,529,637	\$19,321,341	\$74,005,624
2005	\$13,886,998	\$8,801,939	\$9,595,579	\$19,177,472	\$14,450,108	\$65,912,097
2006	\$18,751,535	\$8,239,278	\$20,088,106	\$5,877,947	\$38,280,485	\$91,237,351
2007	\$17,714,162	\$13,221,633	\$15,571,832	\$24,388,307	\$27,676,257	\$98,572,190
<b>2008</b>	<b>\$17,915,380</b>	<b>\$3,586,018</b>	<b>\$28,633,460</b>	<b>\$16,509,338</b>	<b>\$50,130,769</b>	<b>\$116,774,966</b>

<sup>a</sup> Includes Chinook salmon < 21". Data for Chinook salmon in this table is based on calendar year.

<sup>b</sup> [www.bls.gov](http://www.bls.gov), CPI—All Urban Users, not seasonally adjusted, U.S. city average, all items, base period 1982–84 = 100.



Table 12.—Southeast Alaska reported subsistence and personal use salmon harvest, by species, and number of permits issued, from 1985 to 2008.

Year	No. of Permits			Number of Salmon Harvested					
	Issued	Returned	Fished <sup>a</sup>	Chinook	Sockeye	Coho	Pink	Chum	Total
1985 <sup>b</sup>	3,012	—	1,271	19	20,006	360	2,136	2,951	25,472
1986	2,777	—	1,353	29	21,974	277	971	2,840	26,091
1987	2,678	—	1,322	34	25,430	117	1,491	3,881	30,953
1988	2,821	—	998	94	20,011	97	1,145	3,013	24,360
1989	3,102	—	1,369	221	29,237	511	3,472	3,086	36,529
1990	3,142	—	1,428	163	33,114	806	3,715	3,436	41,234
1991	3,447	—	1,494	201	37,419	614	1,829	3,358	43,462
1992	3,331	—	1,691	65	47,630	1294	2,905	3,189	55,083
1993	3,731	—	1,939	88	51,099	1252	2,147	2,582	57,168
1994	3,933	—	2,057	100	52,491	1438	3,607	4,109	61,745
1995	3,837	—	1,837	131	41,643	1693	3,170	3,340	49,977
1996 <sup>c</sup>	4,047	3,226	1,996	144	51,290	1123	2,341	4,112	59,010
1997	4,082	3,406	2,031	64	45,333	946	3,268	3,611	53,222
1998	4,131	3,511	2,185	152	49,709	1254	3,161	5,042	59,318
1999	4,186	3,591	2,173	372	45,604	789	2,736	4,356	53,857
2000	3,633	3,068	1,838	292	41,786	745	2,055	2,954	47,832
2001	3,470	3,002	1,776	386	44,188	1071	3,671	3,298	52,614
2002	3,204	2,662	1,673	428	44,251	1245	2,620	1,833	50,377
2003	3,469	2,844	1,883	243	53,386	1222	3,086	3,206	61,143
2004	3,565	3,186	1,996	352	50,049	1308	2,788	2,722	57,219
2005	3,200	2,703	1,485	189	31,416	1183	4,362	1,631	38,781
2006	3,279	2,700	1,669	365	43,013	963	2,962	1,520	48,823
2007	3,040	2,705	1,525	216	32,357	633	2,288	625	36,119
<b>2008<sup>d</sup></b>	<b>3,001</b>	<b>1,790</b>	<b>1035</b>	<b>137</b>	<b>23,093</b>	<b>1,747</b>	<b>1,207</b>	<b>916</b>	<b>27,100</b>
<b>Averages</b>									
1998–2007	3,518	2,997	1,820	300	43,576	1,041	2,973	2,719	50,608
1985–2007	3,422	—	1,665	187	38,918	910	2,628	2,982	45,660

Note: Data presented is for Southeast Alaska and excludes the Yakutat area.

<sup>a</sup> Number of permits fished is approximate.

<sup>b</sup> Prior to 1985 the numbers of permits issued and returned were not recorded.

<sup>c</sup> Prior to 1996 the numbers of permits issued and returned are not reliable due to data entry omissions (if a permit had zero harvest it was not recorded as a returned permit).

<sup>d</sup> Preliminary data, since only 60 percent of permits have been returned. Permits will continue to be returned and entered through next season.

Table 13.–Yakutat Area reported subsistence salmon harvest, by species, and number of permits issued, from 1985 to 2008.

Year	No. of Permits			Number of Salmon Harvested					
	Issued	Returned	Fished <sup>a</sup>	Chinook	Sockeye	Coho	Pink	Chum	Total
1985	–	–	46	230	1,003	59	–	–	1,292
1986	–	–	170	301	2,357	586	–	–	3,244
1987	–	–	120	372	3,598	883	–	–	4,853
1988	–	–	111	196	2,119	176	46	2	2,539
1989 <sup>a</sup>	153	–	87	359	3,494	880	221	51	5,005
1990	128	–	74	361	3,332	809	35	2	4,539
1991	134	–	27	61	896	213	1	0	1,171
1992	139	–	109	549	5,469	3,645	37	12	9,712
1993	130	–	105	449	5,073	2,263	6	1	7,792
1994	137	–	101	700	4,586	2,169	32	102	7,589
1995	138	–	94	1,070	3,419	2,007	45	21	6,562
1996 <sup>b</sup>	124	116	89	934	3,666	1,359	96	31	6,086
1997	129	123	89	675	3,428	1,368	86	6	5,563
1998	141	140	111	899	3,951	1,589	200	0	6,639
1999	122	118	89	938	3,905	959	107	0	5,909
2000	138	130	109	963	4,250	1,163	149	27	6,552
2001	139	120	102	880	4,119	1,626	91	10	6,726
2002	124	123	98	1,395	4,334	1,836	187	13	7,765
2003	128	112	87	1,103	3,488	1,281	137	1	6,010
2004	138	108	87	936	4,078	801	45	26	5,886
2005	115	95	66	552	2,649	756	77	5	4,039
2006	127	110	90	823	3,540	659	90	6	5,118
2007	121	87	78	594	4,152	507	125	3	5,381
<b>2008<sup>c</sup></b>	<b>121</b>	<b>24</b>	<b>20</b>	<b>93</b>	<b>614</b>	<b>94</b>	<b>54</b>	<b>5</b>	<b>860</b>
<b>Averages</b>									
1998–2007	129	114	92	908	3,847	1,118	121	9	6,003
1989–2007	132	115	89	750	3,780	1,363	93	17	6,002

<sup>a</sup> Prior to 1989 the numbers of permits issued and returned were not recorded.

<sup>b</sup> Prior to 1996 the numbers of permits issued and returned are not reliable due to data entry omissions (if a permit had zero harvest it was not recorded as a returned permit).

<sup>c</sup> Preliminary data for 2008 since only 20 percent of the permits are returned. Permits will continue to be returned and entered through next season.

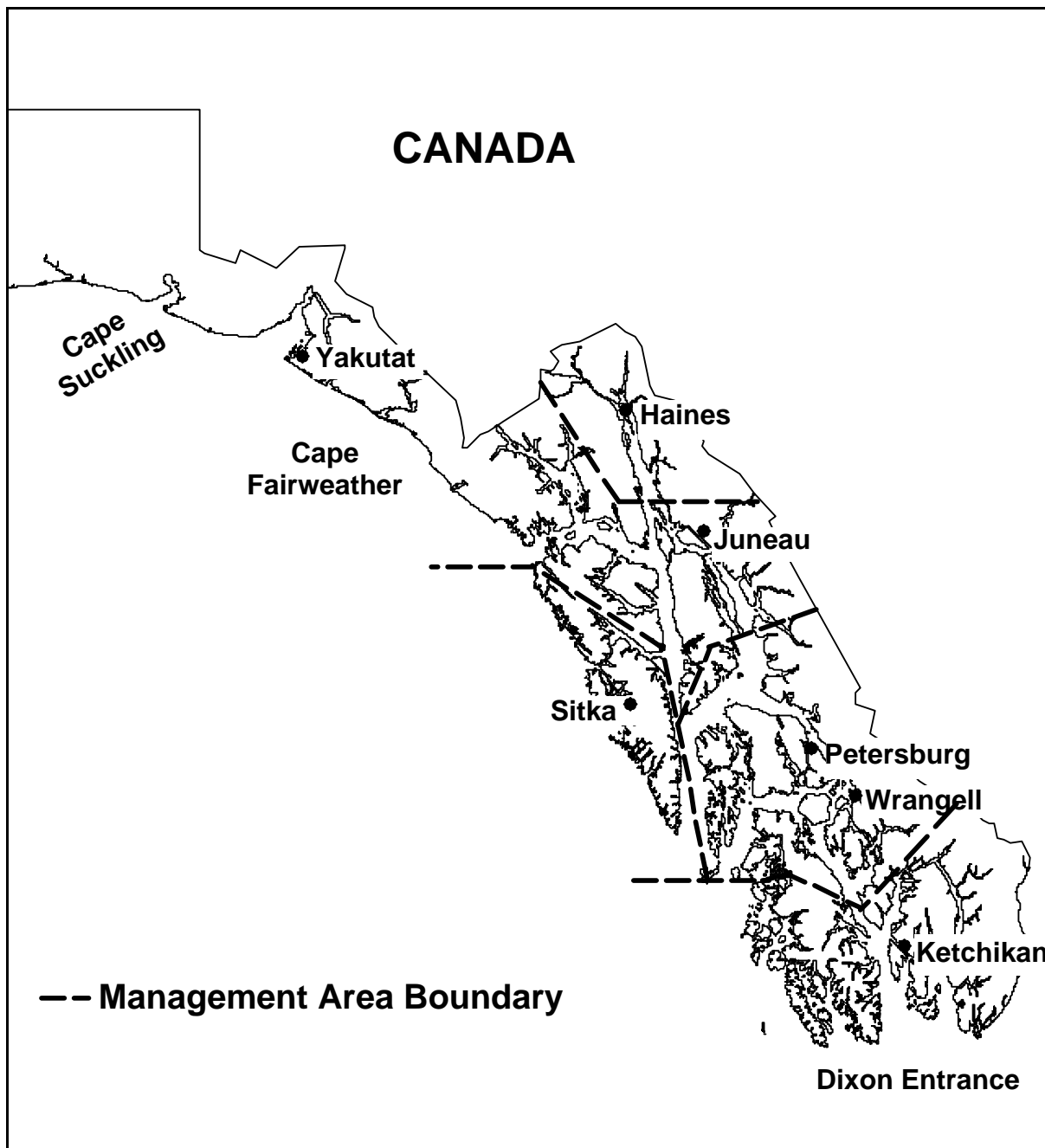


Figure 1.—The Southeast Alaska/Yakutat Region (Region I) consists of Alaska waters between Cape Suckling on the north and Dixon Entrance on the south. Troll fisheries are managed regionally, and drift gillnet, set net, and purse seine fisheries are managed by area offices in Ketchikan, Petersburg/Wrangell, Sitka, Juneau, Haines, and Yakutat.

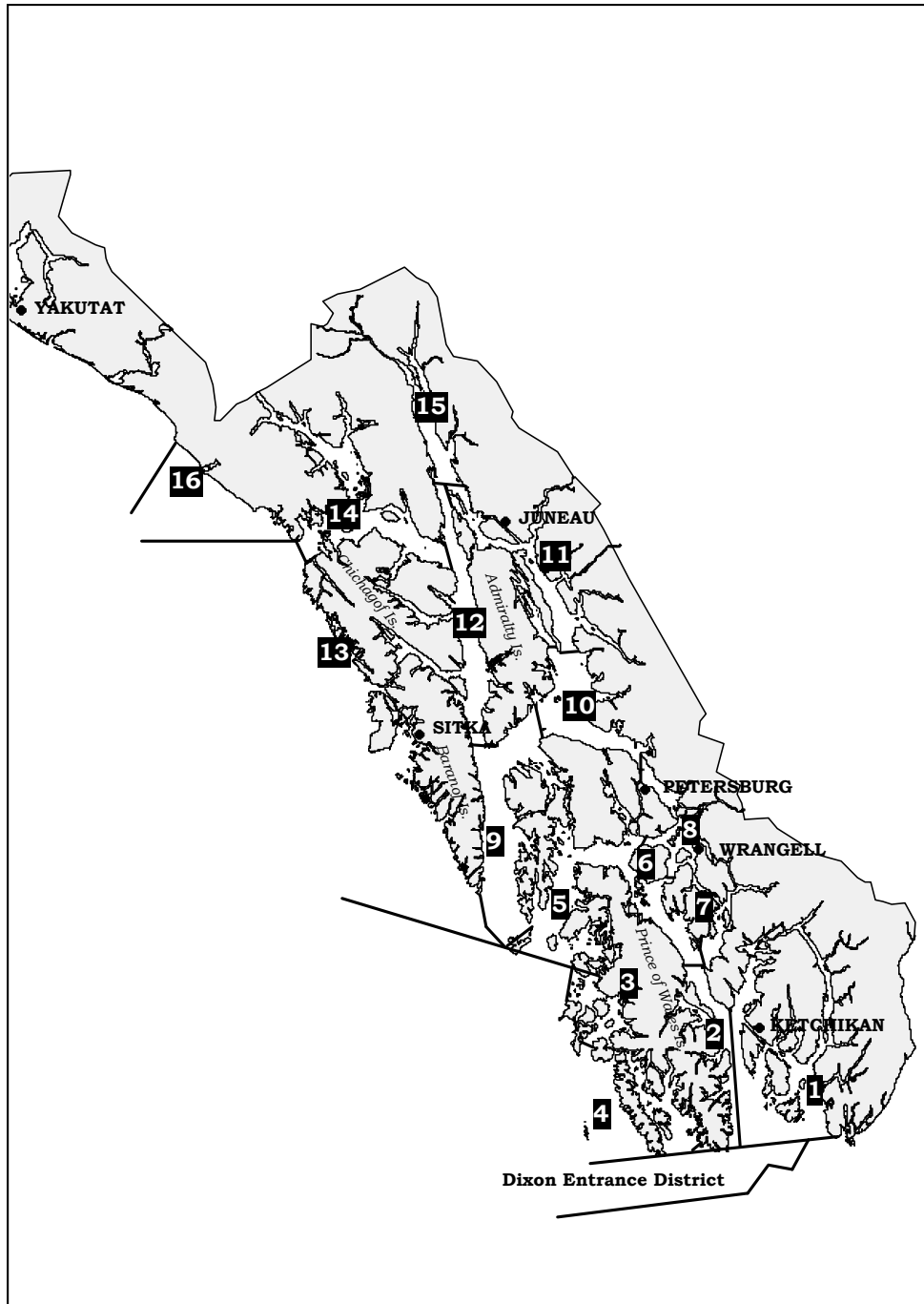


Figure 2.—Boundaries for regulatory districts 1 to 16, as well as Dixon Entrance district, within Southeast Alaska.

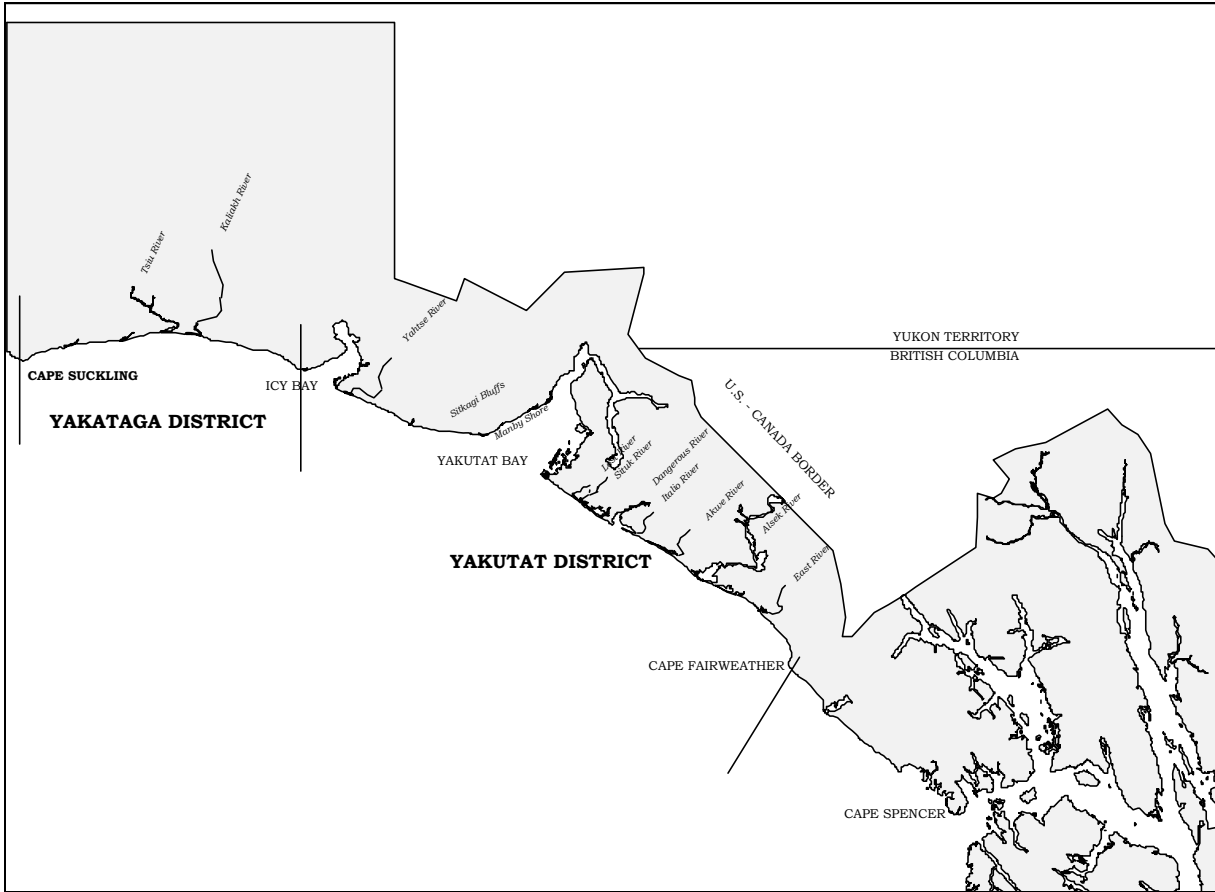


Figure 3.—Boundaries for Yakutat and Yakataga regulatory districts, within the Yakutat management area (Registration Area D).

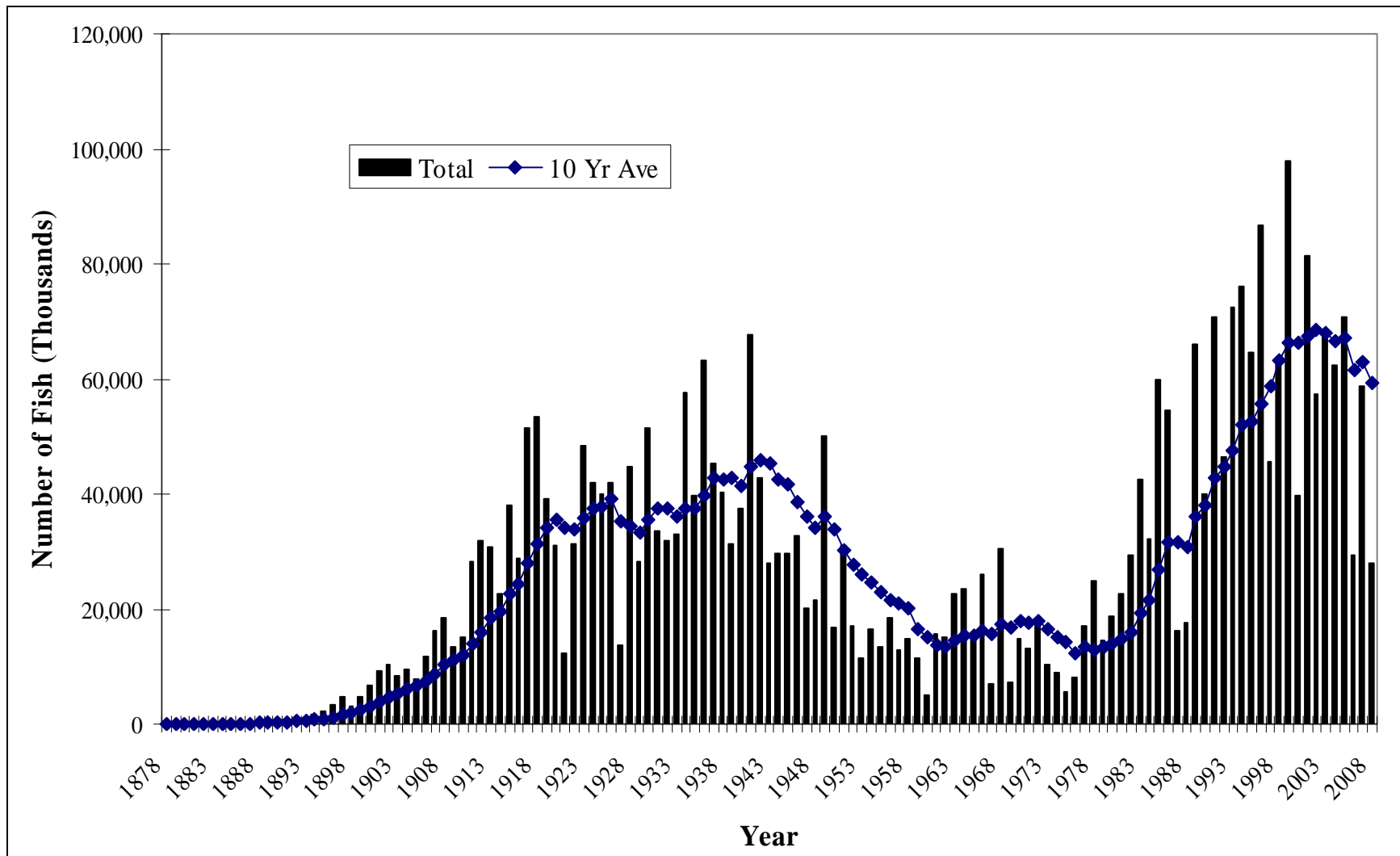


Figure 4.—Region I (Southeast Alaska and Yakutat) historical salmon harvest and recent 10-year average harvest, from 1878 to 2008.

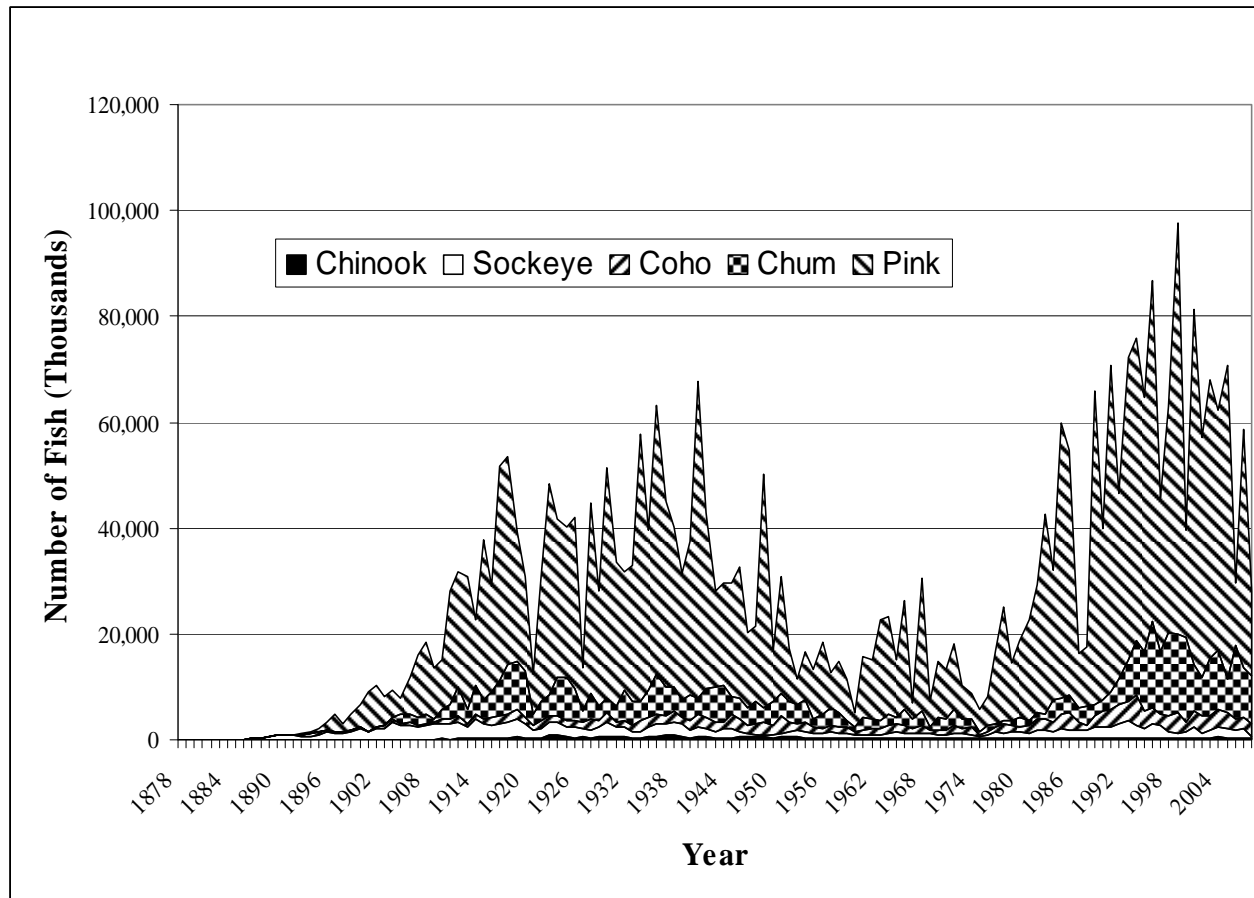


Figure 5.—Region I (Southeast Alaska and Yakutat) historical salmon harvest by species and season, 1878–2008.

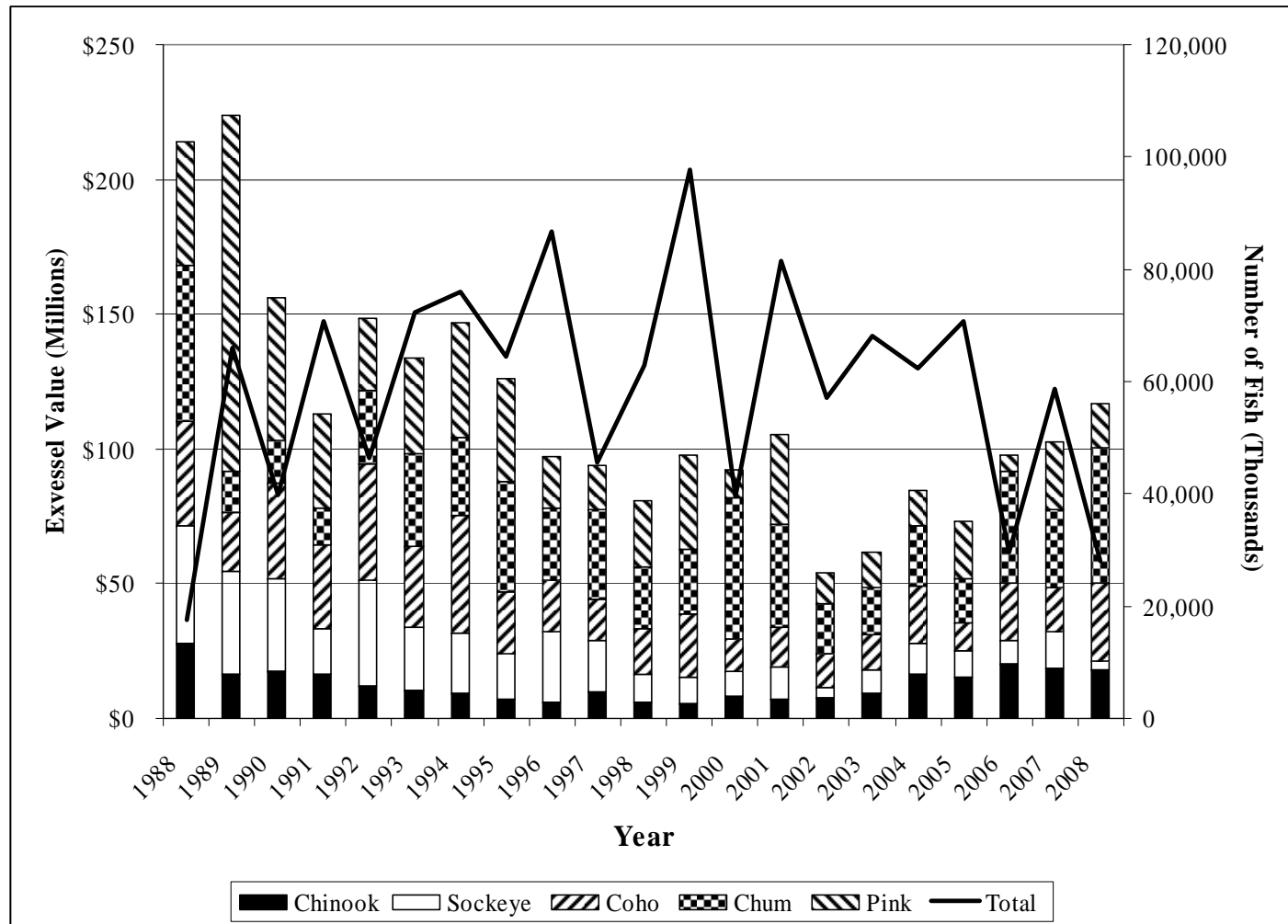


Figure 6.—Exvessel value (in 2008—adjusted dollars) by species and season, and number of salmon harvested by season, 1988–2008.



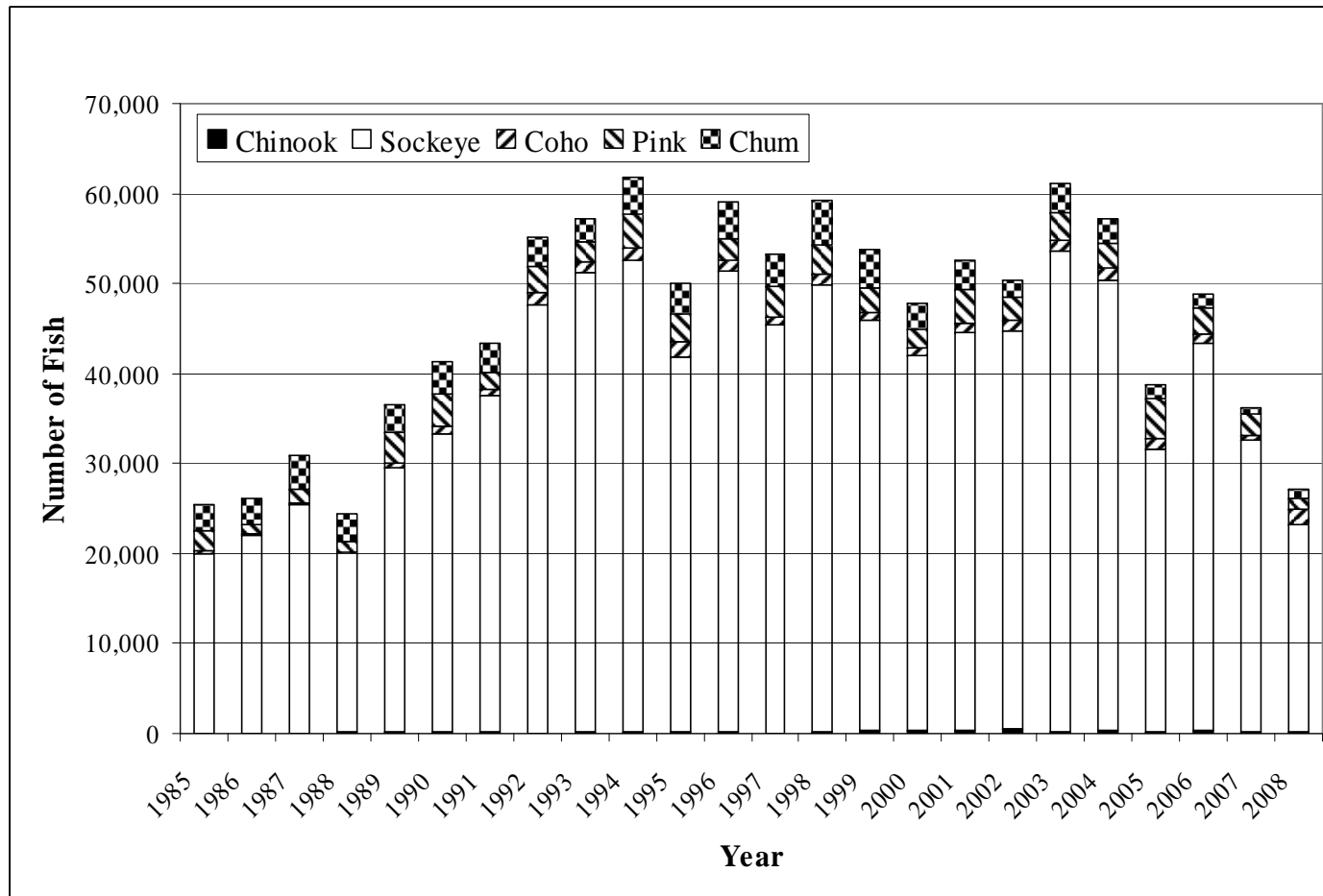


Figure 7.—Number of fish harvested in the subsistence/personal use fishery, by species, for Southeast Alaska, 1985 to 2008.

*Note:* Harvest information for 2008 is preliminary since only 60% of permits have been returned.

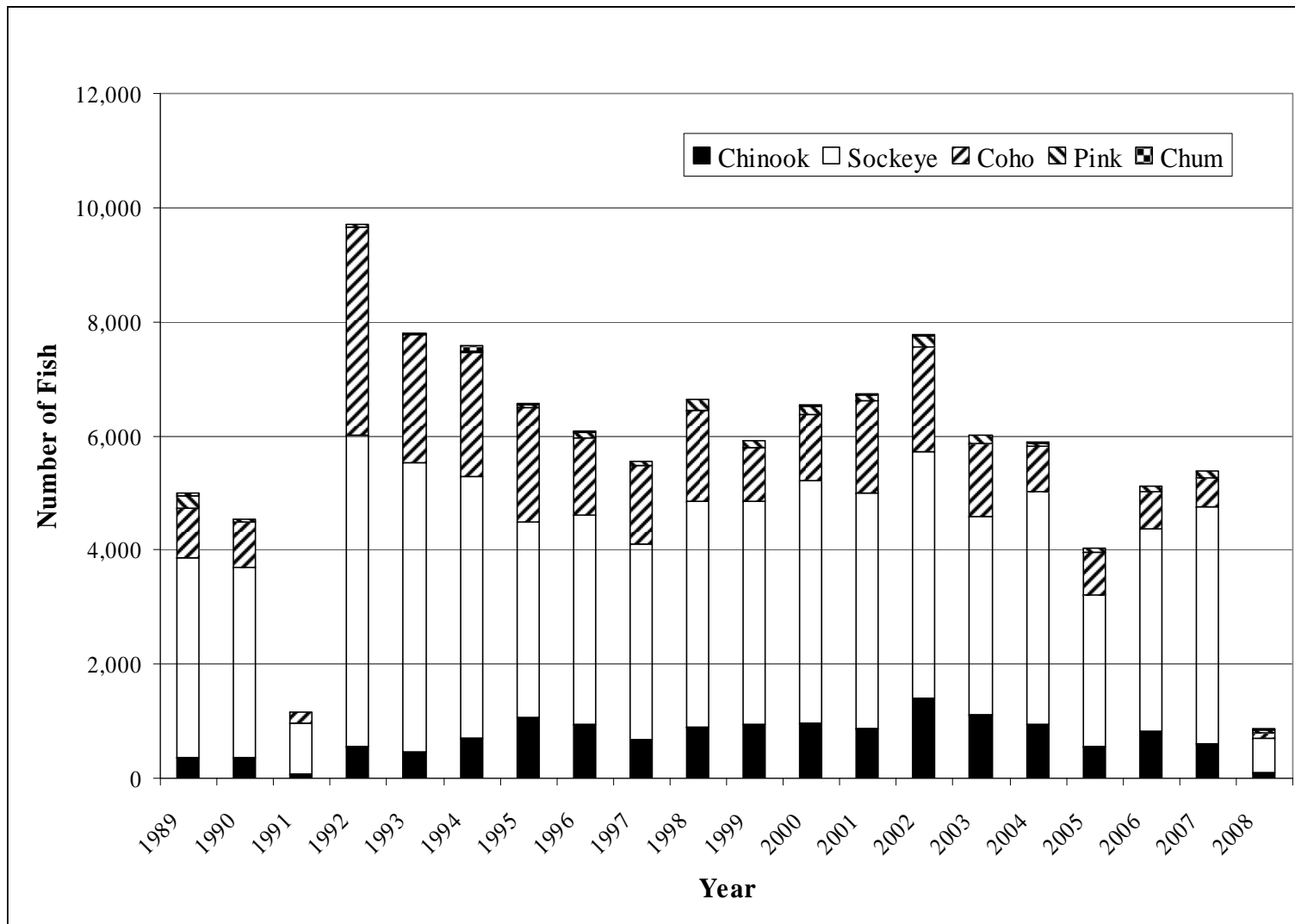


Figure 8.—Number of fish harvested, by species, in the Yakutat subsistence/personal use fishery, 1985 to 2008.

*Note:* Very preliminary data for 2008 since only 20% of permits have been reported.