

# Implement the Vision:

## PROGRAMS AND INFRASTRUCTURE

See detailed recommendations on pages 14-15

### Culture and Subsistence

- Ensure effective participation from the Bristol Bay Region in all state and federal regulatory processes that effect subsistence resources.
- Encourage celebration of our cultures through community gatherings, culture camps, and exchanges between youth and elders. Explore creating community culture centers.
- Establish a Bristol Bay Regional Elders Council

### Safe and Healthy Families

- Address alcohol/drug abuse and domestic violence through community wellness teams in every community.
- Coordinate public health and public safety efforts in communities to strengthen families

### Economic Development

- Explore job development opportunities by drawing from the Comprehensive Economic Development Strategy (CEDS) and local village plans to increase sustainability in our communities
- Identify investment opportunities from BBNC and other businesses to create sustainable job opportunities in the region
- Collaborate with regional entities, such as BBEDC, Boroughs and the UAF Bristol Bay campus to identify economic development opportunities throughout the region. Emphasize training in business development
- Coordinate infrastructure development across the region to reduce energy costs and enhance broad band communication systems
- Increase access to limited entry permits for local residents so young people can enter commercial fishing
- Enhance the quality of fish so price of the product can increase

### Education

- Create excellent schools by applying practices of successful schools, such as Manakotak
- Increase opportunities for student internships, and increase dual credit opportunities so students can earn college credit for high school classes
- Implement Fisheries Education Kits and collaborate with UAF Marine Advisory Program to expand interest in fisheries

# Vision Summit



© Thomas Woods, BBNA

A regional summit on November 3 and 4 brought over 150 people to the Dillingham elementary school to celebrate shared values revealed through the Bristol Bay Regional Vision project. Participants were invited from all communities of the region. They were joined by seven project Commissioners, leaders of the region, state and federal agency representatives, local government and school district officials, and a state legislator.

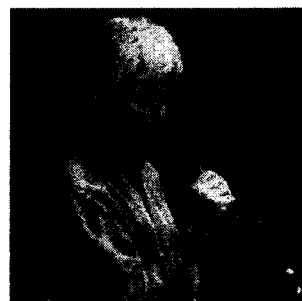
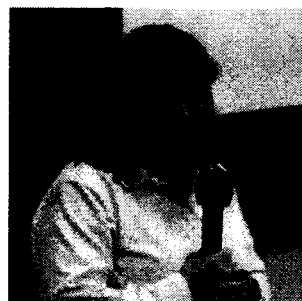
Summit participants heard results of the 16-month Bristol Bay Regional Vision project. Throughout the region people said the foundation of their lives is strong families who are connected to the land and waters of the region. They want continued access to subsistence resources, a strong voice in determining the future direction of the region, excellent schools, local jobs

and preservation of cultural values. Overwhelmingly, the 1,400 participants in 26 communities believe future generations can live healthy and productive lives here.

During the Summit, people identified steps to implement key aspects of the Vision. Beginning with the five essential themes that emerged from over 50 community meetings during the regional vision process, summit participants used Consensor™ audience polling technology to narrow the topics for small group discussions.

Wide-ranging discussions in small groups tackled how to make a difference in the next year and brainstormed lists of people and groups that need to be involved. Each small group also brought questions back to the full summit audience.

The evening of November 3 featured a community potluck dinner, which includ-



From left: Ralph Andersen, BBNA; Sandra Moller, AEA; Peter Crimp, AEA; Karen Johnson, Denali Commission

Summit participants identified steps to implement key aspects of the Vision, beginning with the five essential themes that emerged from community meetings.

ed many kinds of salmon, agutaq, herring eggs, beaver feet and moose. Native dancing topped off the celebratory evening.

On November 4th participants reassembled for a panel on energy projects that may transform the region, followed by thoughts presented by the CEOs of BBNA, BBNC, BBAHC, BBHA and BBEDC. They committed to use the Vision to guide the programs of their agencies and corporations.

Above all, people took the opportunity to talk with each other about how to foster

collaboration and cooperation within and among communities and with government agencies. When asked "Will you commit to carrying the Vision to your community or organization?", 96 percent of participants said yes. Evaluations at the Summit showed that participants valued the process and are personally committed to take action to implement the Bristol Bay Regional Vision.

Full results of the project can be reviewed on the website at [bristolbayvision.org](http://bristolbayvision.org).

### Small Group Discussion Topics

**safe and healthy families/cultural expression:** Teaching about, encouraging, and supporting healthy relationships. Addressing alcohol and drug abuse.

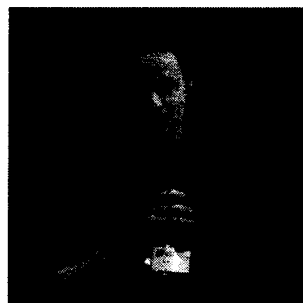
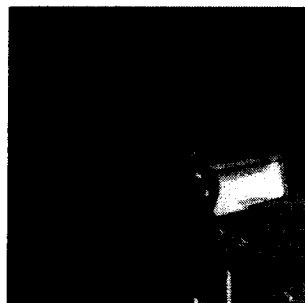
**subsistence and resource management:** Protecting fish stocks and habitat with effective management practices. Increasing local participation in land and watershed planning projects.

**economic development:** Creating a more diversified economy; expanding renewable resource, and other opportunities in addition to fishing.

**education:** Making sure students are prepared for post-secondary education and training.

**energy:** Exploring and developing renewable energy resources to generate electricity including wind, solar, hydro, tidal and geothermal resources.

**housing, transportation, and infrastructure:** Improving infrastructure coordination (roads, electrical, housing water/sewage) among agencies (HUD, BIA, IHS/ANTHC/VSW, AEA, Boroughs, Cities, tribes and BBHA).



© Thomas Woods, BBNA

From left: Rep. Bryce Edgmon; Rosie Ricketts, AHFC; Tom Marsik, UAF Bristol Bay Campus; BBNA staff distribute doorprizes

# Project Recommendations

## SAFE AND HEALTHY FAMILIES

- 1 The foundation of the region is committed families.
- 2 Teach children and young adults how to have healthy relationships.
- 3 Address alcohol/drug abuse and domestic violence through community wellness teams in every community.
- 4 Provide support for community wellness teams in every community. Include village resource people to assess and implement prevention action, share information, work together and provide intervention.
- 5 Increase public safety officers in communities.
- 6 Coordinate public health and public safety efforts in communities to strengthen families.
- 7 Encourage Native families to become foster parents.
- 8 Provide children with safe and caring places to go after school, where they can do homework.

## CULTURE AND SUBSISTENCE

- 1 Ensure continued access to subsistence resources for residents of the region.
- 2 Celebrate and preserves the cultures and languages of the region.
- 3 Ensure effective outreach and public notice for any state or federal advisory council and other meetings affecting resource management. Meetings need to be held in region.
- 4 Maintain participation on regional advisory councils and boards. Advise residents why their involvement is important.
- 5 Residents should be good stewards when using the land and waters of the region.
- 6 Establish a Bristol Bay Regional Elders Council .
- 7 Encourage and support Culture Camps.
- 8 Get more people involved in Environmental Impact Study processes by collaborating with the Bristol Bay Campus for classes to assist with understanding the National Environmental Protection Act (NEPA) processes and new developmental efforts.
- 9 Encourage celebration of our cultures through community gatherings and exchanges between youth and elders. Explore creating community culture centers.
- 10 Insist that managers gather sound scientific data to guide land and water management of fish, game and habitat ( like the Nushagak River Watershed Traditional Use Area Conservation Plan).

## ECONOMIC DEVELOPMENT AND ENERGY

**1** Encourage economic development based largely on renewable resource development.

**2** Create jobs by drawing from the Comprehensive Economic Development Strategy (CEDs) and local village plans to increase sustainability in our communities.

**3** Reduce the cost of energy by encouraging renewable, such as solar, wind and geothermal sources.

**4** Teach communities how to conserve electricity.

**5** Weatherize houses and businesses across the region.

**6** Construct energy efficient buildings.

**7** Identify investment opportunities from BBNC and other businesses to create economic opportunities in the region.

**8** Increase access to limited entry permits for local young people.

**9** Enhance the quality of fish so the price of the product can increase.

**10** Create internships and apprenticeships in our communities. Expand VISTA opportunities for villages.

**11** Expand Broadband to remaining communities in the region. BBs upgrade software to meet new systems requirements.

**12** Support and encourage group projects to plan and launch businesses, such as Laundromats, arts & crafts stores with web-based sales, recycling, gardening, and fly-tying.

**13** Collaborate with regional entities, such as BBEDC, Boroughs and the UAF Bristol Bay campus to identify economic development opportunities throughout the region. Emphasize training in business development.

Continued on page 16.

**Final recommendations of the project cover 5 key areas. They include those forwarded to the Bristol Bay Partnership by Commissioners following two rounds of community meetings and others suggested by local, state and federal agency staff. These recommendations were later affirmed by participants at the regional Vision Summit in November 2011.**



## EDUCATION AND YOUTH

- 1** Create excellent schools by applying practices of successful schools, such as Manokotak. (Manokotak earned recognition as top Title I school in the nation: use their methods in other communities.)
- 2** Get kids to school well rested, fed and on time.
- 3** Create open communication between the community and the school teachers and administrators.
- 4** Offer challenging science and math classes so kids who strive to go to college and vocational school may be successful.
- 5** Offer more vocational choices in high school.
- 6** Increase opportunities for student internships, increase career path-

ways for students, and increase dual credit opportunities so students can earn college credit for high school classes.

**7** Continue seeking involvement of young people, especially ages 14-25. School board and other committees can offer more than one youth seat.

**8** Implement Fisheries Education Kits curriculum assistance for all Bristol Bay schools. Collaborate with UAF Marine Advisory Program.

**9** Encourage celebration of our cultures through community gatherings and exchanges between youth and elders. Explore creating community culture centers.

**10** Encourage bilingual/bicultural and other programs in schools to help children learn about subsistence and stewardship of resources.

## COLLABORATION AND INFRASTRUCTURE

- 1** Foster collaboration among tribes, corporations and cities to maximize infrastructure development.
- 2** Coordinate infrastructure planning and development across the region to reduce energy costs and enhance broad band communication systems.
- 3** Partner with state and federal agencies on infrastructure development.
- 4** Expand capacity building of communities through technical assis-

tance in grant writing and grant management.

**5** Link regional Vision to Comprehensive Economic Development Strategies (CEDS) and Individual Development Accounts (IDAs). Develop Capital Improvement Projects lists in community meetings consisting of tribes and local governments.

**6** Collaborative as subregions on transportation and housing projects.

**7** Prioritize transportation projects to maximize connectivity between communities.

# Vision Summit Response

I am personally ready to commit my energy to implementing the regional Vision.

**95%**  
Agreed

We are collectively willing to coordinate multi-village projects to maximize the available funding.

**88%**  
Agreed

The best place to put our emphasis to improve education is planning and implementing career pathways.

**52%**  
Agreed

I am personally willing to get involved and be committed to work on substance abuse issues.

**74%**  
Agreed

A group of Commissioners from across the region should carry implementation of the Vision forward.

**90%**  
Agreed

A region-wide working group should be empowered to address energy needs.

**91%**  
Agreed

We should explore how to use our fisheries as an economic engine for our region (i.e. own processing plants)?

**93%**  
Agreed

Combining support of all 6 advisory committees in the region is the best way to strengthen our voice in fisheries management.

**52%**  
Agreed

State law should be changed to give local advisory committees regulatory power.

**75%**  
Agreed

I will commit to carrying the Vision to my community or organization.

**96%**  
Agreed

As a stakeholder in the region, my voice was heard in the Visioning process and reflected in the Summit.

**80%**  
Strongly Agreed / Agreed

I participated in a visioning meeting in my community.

**58%**  
Agreed

For complete results, go to [www.bristolbayvision.org/docs/BBRV-Summit-Consensor.pdf](http://www.bristolbayvision.org/docs/BBRV-Summit-Consensor.pdf)



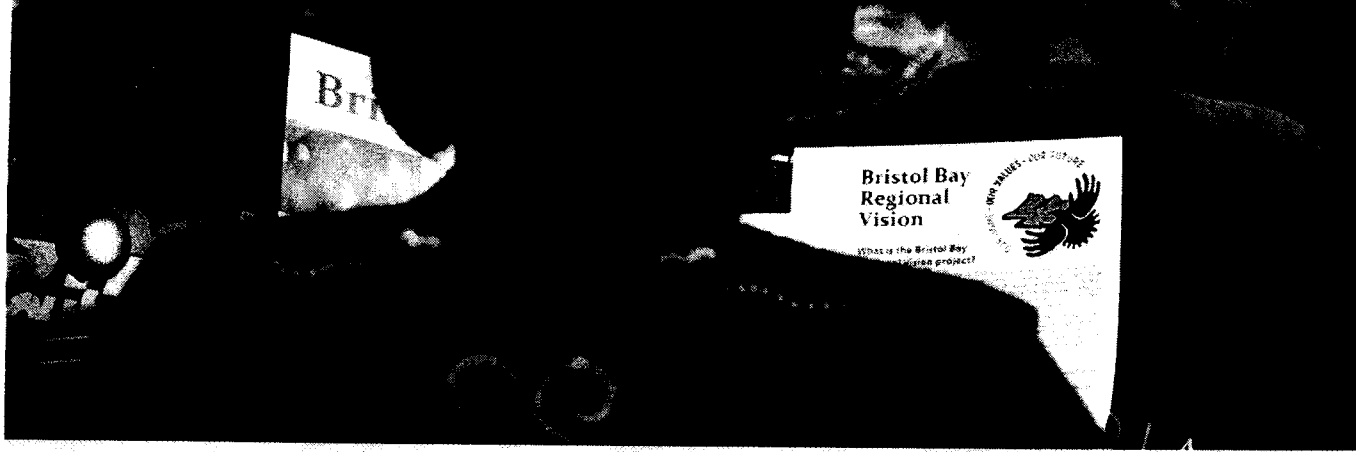
# Community Meeting Participation

Community	Meeting Dates		Attendance		% of Round 2 Participants who attended Round 1	Population	Percent of Population Attending <sup>1</sup>
	Round 1	Round 2	Round 1	Round 2			
Alegnagik	9/7/2010	4/7/2011	40	15	57%	223	21%
Chignik Bay	9/28/2010	3/29/2011	23	14	60%	62	46%
Chignik Lagoon	9/30/2010	3/31/2011	22	11	77%	73	34%
Chignik Lake	9/29/2010	3/30/2011	14	10	60%	105	17%
Clarks Point	9/9/2010	4/14/2011	29	19	83%	61	53%
Dillingham	11/4/2010	4/11/2011	67	20	58%	2,264	8%
Egegik	1/12/2011	5/6/2011	14	12	50%	73	27%
Ekuk	12/6/2010	4/6/2011	13	33	33%	-	
Ekwok	10/29/2010	3/26/2011	42	20	90%	109	40%
Iguigig	12/13/2010	4/26/2011	23	19	72%	64	44%
Kokhanok	12/14/2010	4/26/2011	21	19	54%	184	16%
Koliganek	10/28/2010	3/25/2011	30	50	30%	182	36%
Levelock	9/8/2010	5/7/2011	41	19	47%	88	58%
Manokotak	12/6/2010	4/13/2011	44	20	78%	438	18%
Naknek/King Salmon	10/11/2010	5/7/2011	28	7	67%	516	20%
New Stuyahok	10/28/2010	3/24/2011	53	17	54%	519	12%
Newhalen/Iliamna	12/16/2010	4/25/2011	14	7	57%	162	11%
Nondalton	12/15/2010	4/25/2011	25	34	35%	186	25%
Pedro Bay	12/14/2010	4/27/2011	21	17	75%	48	53%
Perryville	9/27/2010	3/28/2011	24	19	59%	122	26%
Pilot Point	1/13/2011	5/5/2011	12	19	26%	66	39%
Port Alsworth	12/15/2010		7			118	6%
Port Heiden	10/1/2010	4/1/2011	30	9	89%	83	37%
South Naknek	1/10/2011	5/4/2011	14	10	50%	68	28%
Togiak	11/1/2010	4/12/2011	51	27	50%	820	14%
Ugashik	1/14/2011	5/6/2011	9	8	100%	15	60%
Dillingham School	11/4/2010		71				
Manokotak School	12/6/2010		51				
Naknek School	10/11/2010		42				
Togiak School	11/1/2010		56				
<b>Community Meeting Attendance (total)</b>			<b>931</b>	<b>455</b>	<b>1386</b>		
Vision Summit	11/3-4/2011				150+		
Project Participation					1536+		
Iliamna King Salmon	Invited to Newhalen Meeting Invited to Naknek Meeting		Portage Creek Twin Hills	Elected to do printed questions Elected to do printed questions			

1) Based on unduplicated total for both rounds of community meetings.



# About the Project



In spring 2010, five regional organizations in Bristol Bay Alaska partnered to design a process through which residents could envision the future of their region.

By engaging residents in meaningful dialog about their values and hopes for their families and communities and for the land and resources of the region, the partners sought to develop a long-range vision that truly reflects the shared values and aspirations of the people of the region.

Working together as the Bristol Bay Partnership, the organizations include the Bristol Bay Native Association (BBNA), Bristol Bay Native Corporation (BBNC), Bristol Bay Economic Development Corporation (BBEDC), Bristol Bay Housing Authority

(BBHA), and Bristol Bay Area Health Corporation (BBAHC).

The Alaska Conservation Foundation and the Gordon and Betty Moore Foundation made the project possible through generous grants. Additional funding was generously provided by the Oak Foundation, Rasmuson Foundation (through BBHA), Tiffany & Co. Foundation and BBNC.

The Vision statement that emerged from the project received very strong endorsement from residents of the region. It now carries the authority of the people of Bristol Bay. It is presented here as a guiding document for communities and regional organizations and for all entities that have an interest in the Bristol Bay region.

## Project Staff

### BBNA

Ralph Andersen, CEO  
Patty Heyano, Project Director  
Norman Anderson, Project Manager  
Joyce "Pinky" Armstrong,  
Community Meeting Coordinator  
Gwen Wilson, Media Outreach



## Information Insights

Cady Lister, Project Manager  
Facilitation Team: Sherry Modrow,  
Jane Angvik, Jessica Holden,  
Jana Peirce, Sylvan Robb, Chris Rogers  
Emma Funk, Intern  
Joseph Davis, Videographer  
Dr. Steven Langdon, Anthropologist

 **Information Insights**  
vision + creativity = solutions



