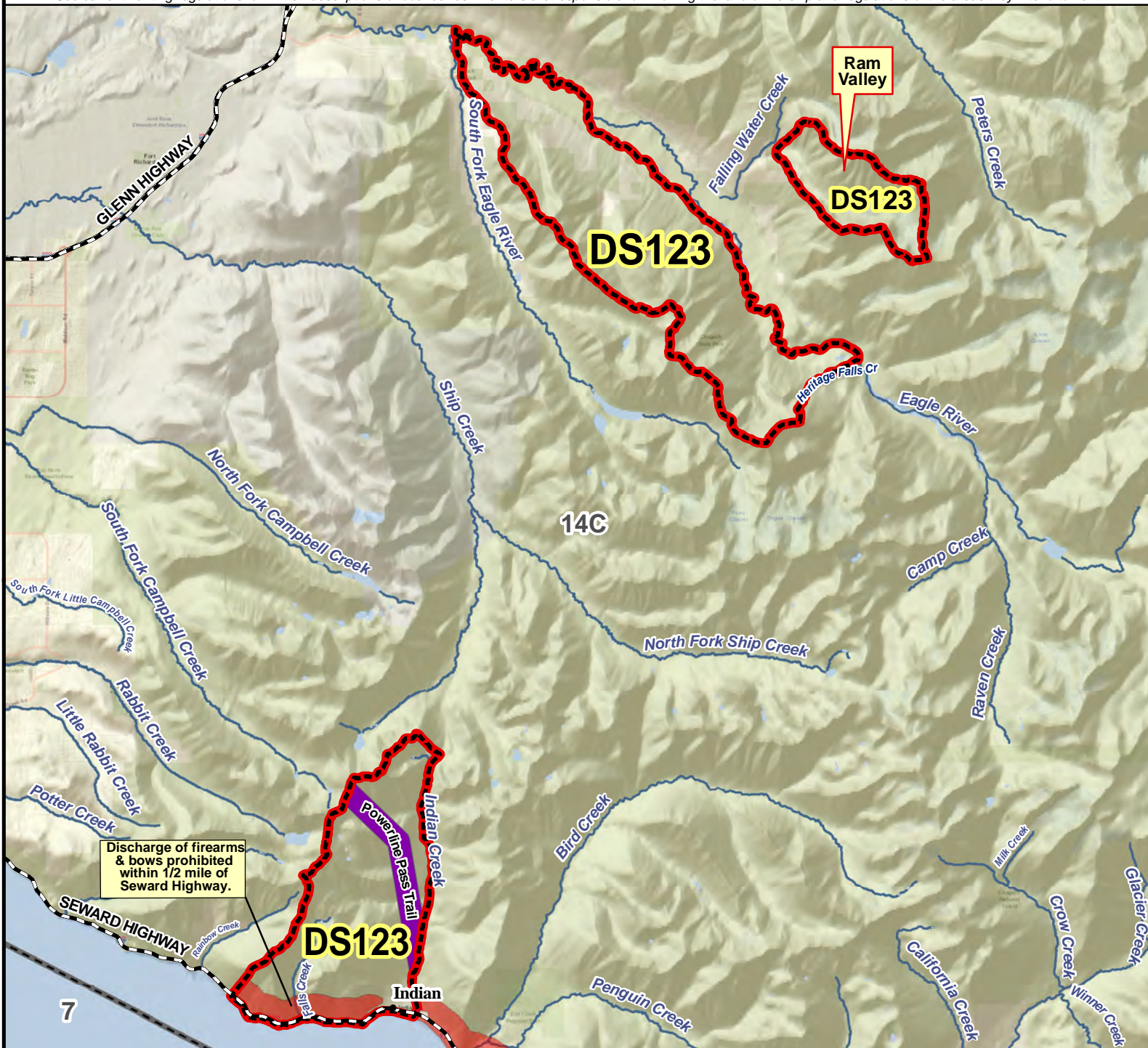


# DS123 Sheep Drawing Permit Hunt

This map is intended for hunt planning use, not for determining legal property or regulatory boundaries. Content is compiled from various sources and is subject to change without notice. See current hunting regulations for written descriptions of boundaries. Hunters are responsible for knowing the land ownership and regulations of the areas they intend to hunt.



**AREA DESCRIPTION:** Unit 14C, that portion to include the following areas:

The area encompassing Falls Creek drainage on the west and the Indian Creek drainage west of Indian Creek, excluding a 1/4-mile buffer along Powerline Pass trail; **and**

The south-side Eagle River drainage downstream of the Heritage Falls Creek drainage to, but not including, the South Fork Eagle River drainage; **and**

Ram Valley: the drainage beginning above the first unnamed stream fork above the second unnamed stream fork above the mouth of Falling Water Creek, beginning at approximately 2,300' in elevation.

These are non-contiguous areas and the permit holder can hunt one or all of the areas.

**Please refer to the Alaska Hunting Regulations booklet for bag type, seasons, and additional regulations concerning this hunt.**

