

Status of Aquatic Farming in Alaska



Jeff Regnart
Ron Josephson
ADF&G

House Fisheries Committee
Juneau, AK
March 11, 2014



Overview

- Program Mission
- Permitting Process
- Geographic Farm Concentration
- Statewide Production
- Regional Production
- End-of-year Inventory
- Acquired Seed
- State Program Streamlining Efforts



Program Mission

- To permit and regulate aquatic farming in the state in a manner that ensures the protection of the state's fish, game, and aquatic plant resources and improves the economy, health, and well-being of the people of the state

Aquatic Farm
Operation
Permit

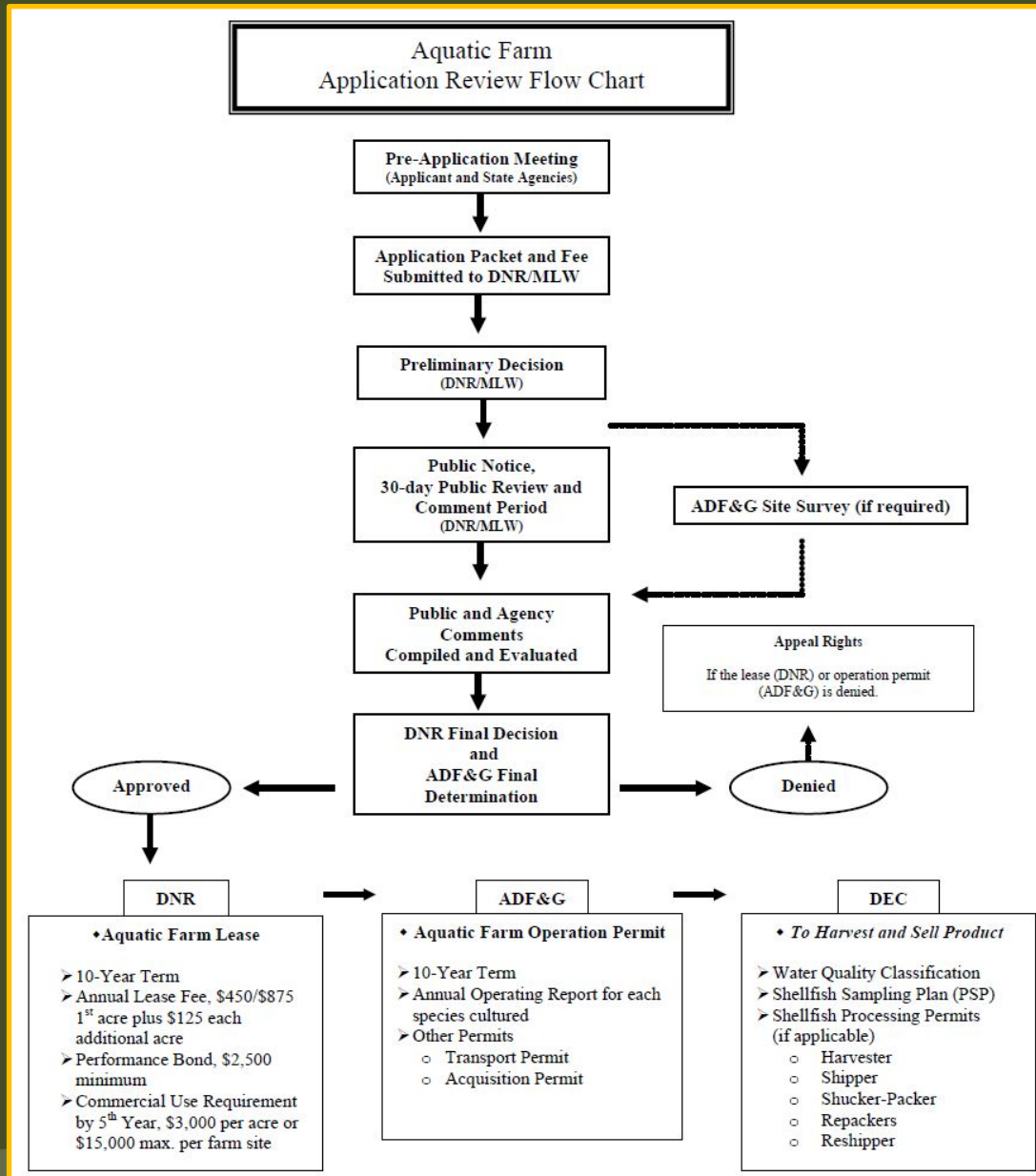
Stock Transport
Permit

Site Suitability
Study Permit

Disease-Free
Seed Source
Certificate

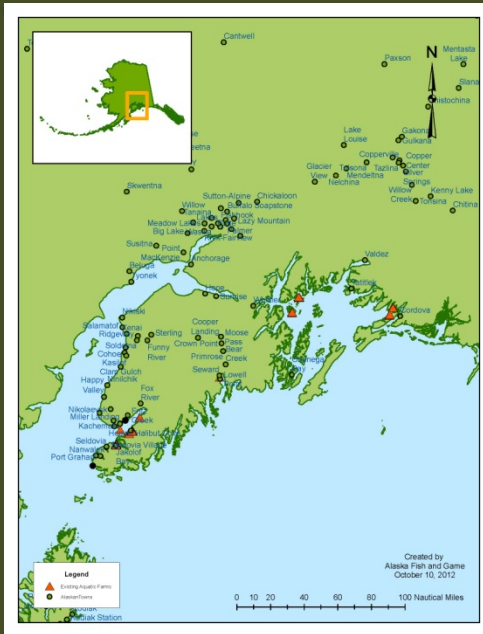
Aquatic Stock
Acquisition and
Transport Permit

Permitting Process



Permitted Farms Geographic Concentration

Southcentral



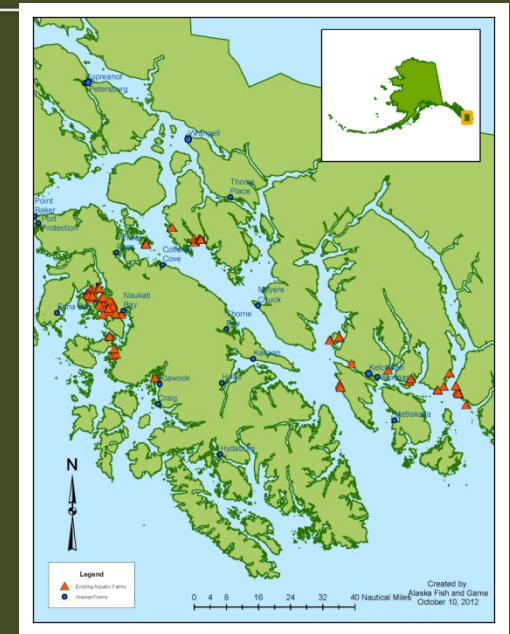
34%

Northern Southeast



15%

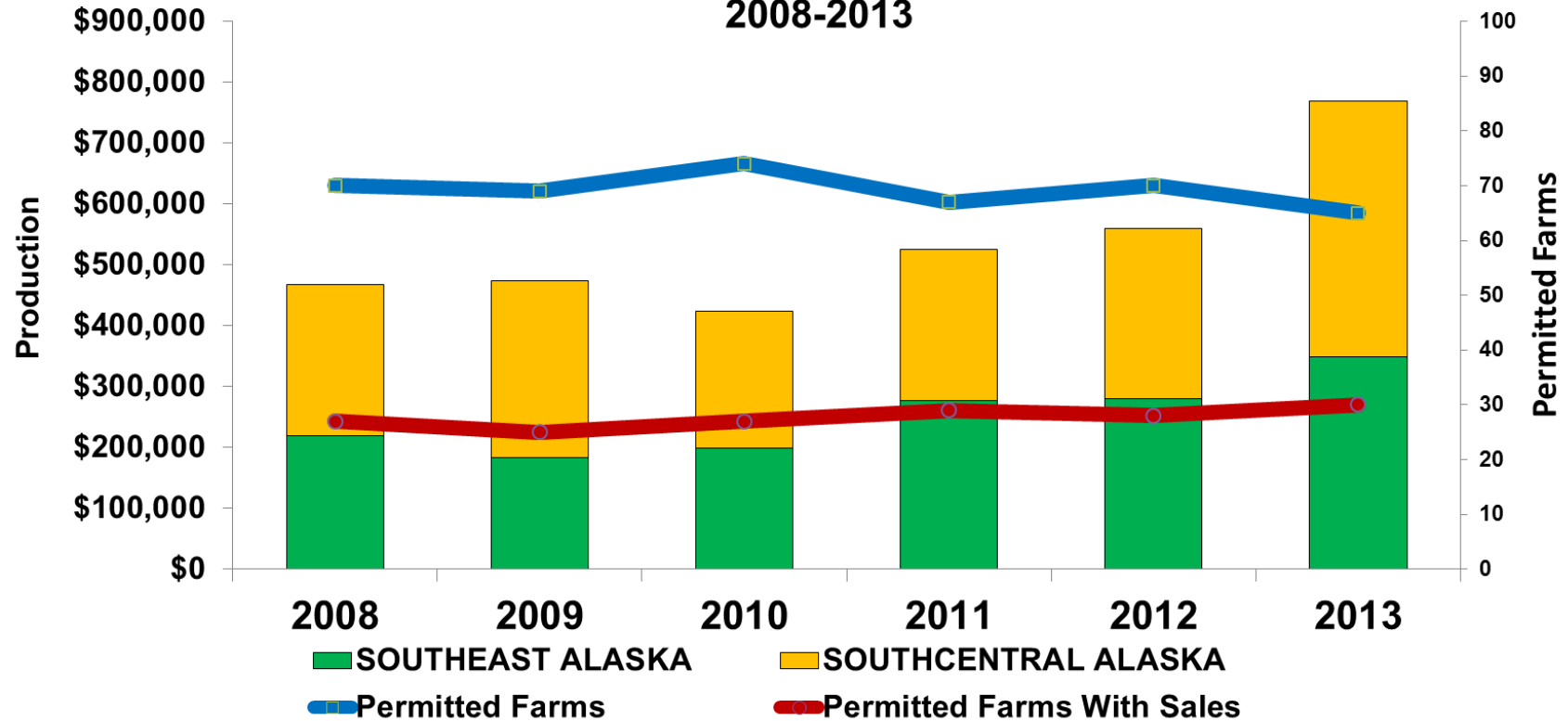
Southern Southeast



51%

Statewide Production By Region

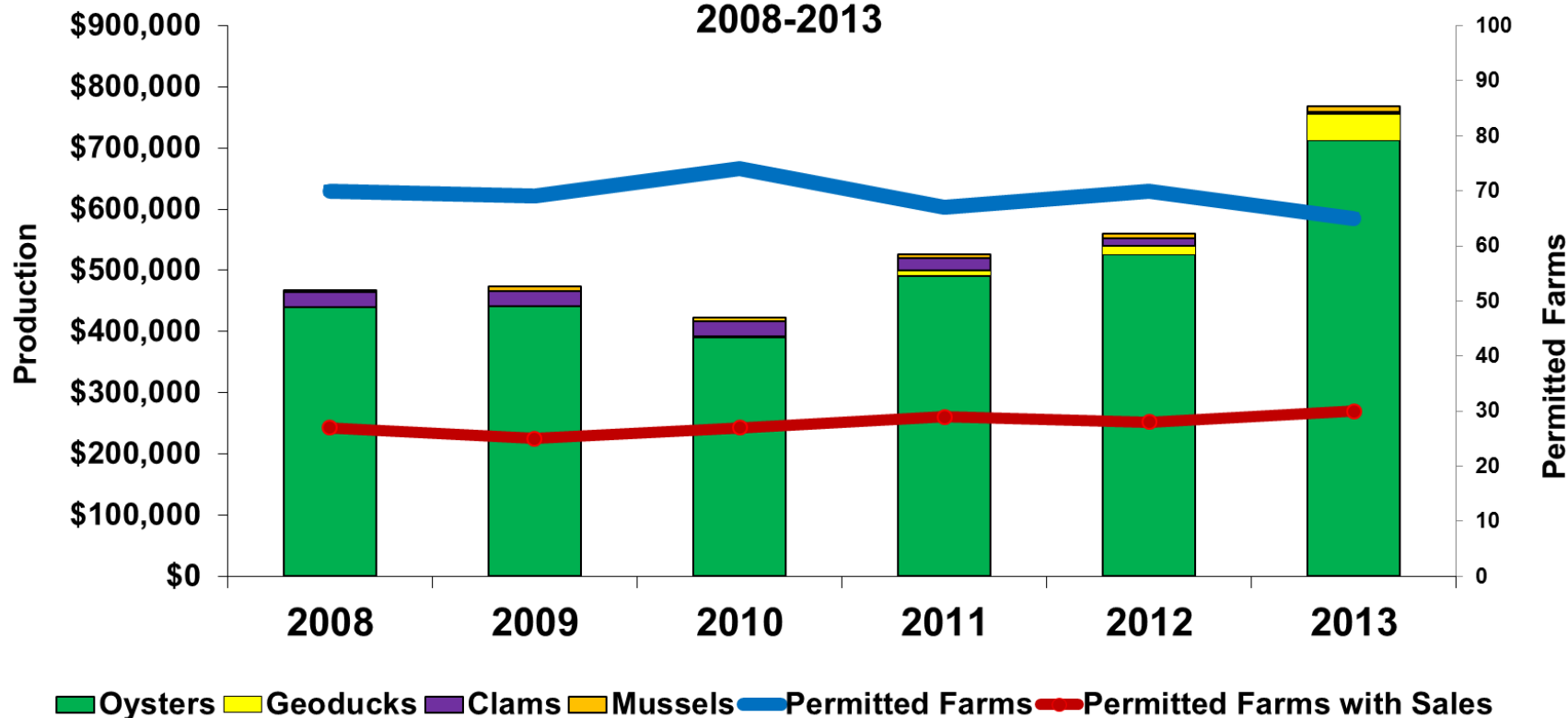
Aquatic Farm Sales by Region
2008-2013



- 2013 total farm gate value total = \$768,820
- SC sales 17% higher than SE (\$420K and \$348K, respectively)
- 37% increased sales from 2012 to 2013

Statewide Production By Species

**Aquatic Farm Sales By Species
2008-2013**



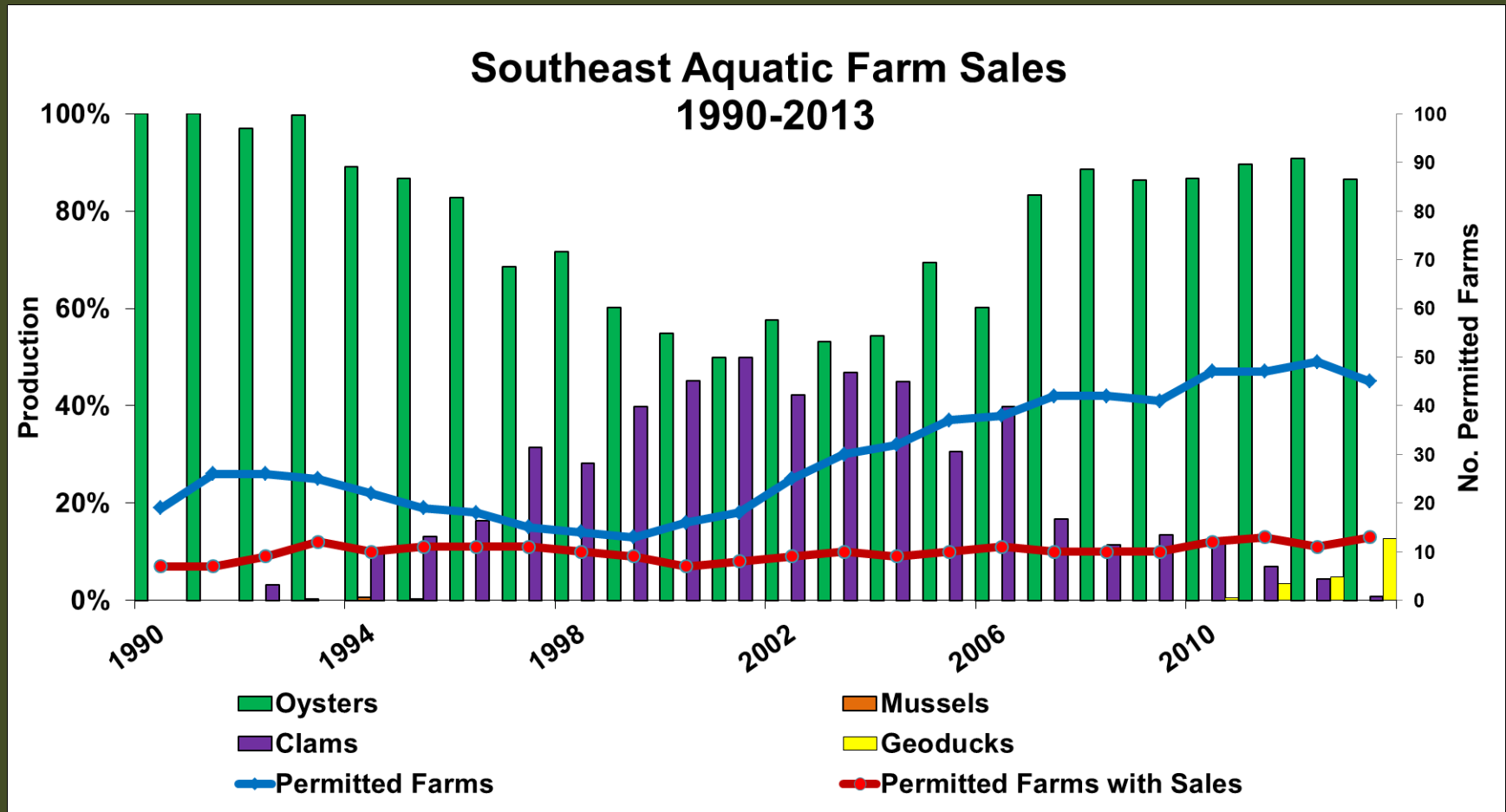
- Pacific Oysters = \$712,345

- Mussels = \$9,512

- LN Clams = \$2,900

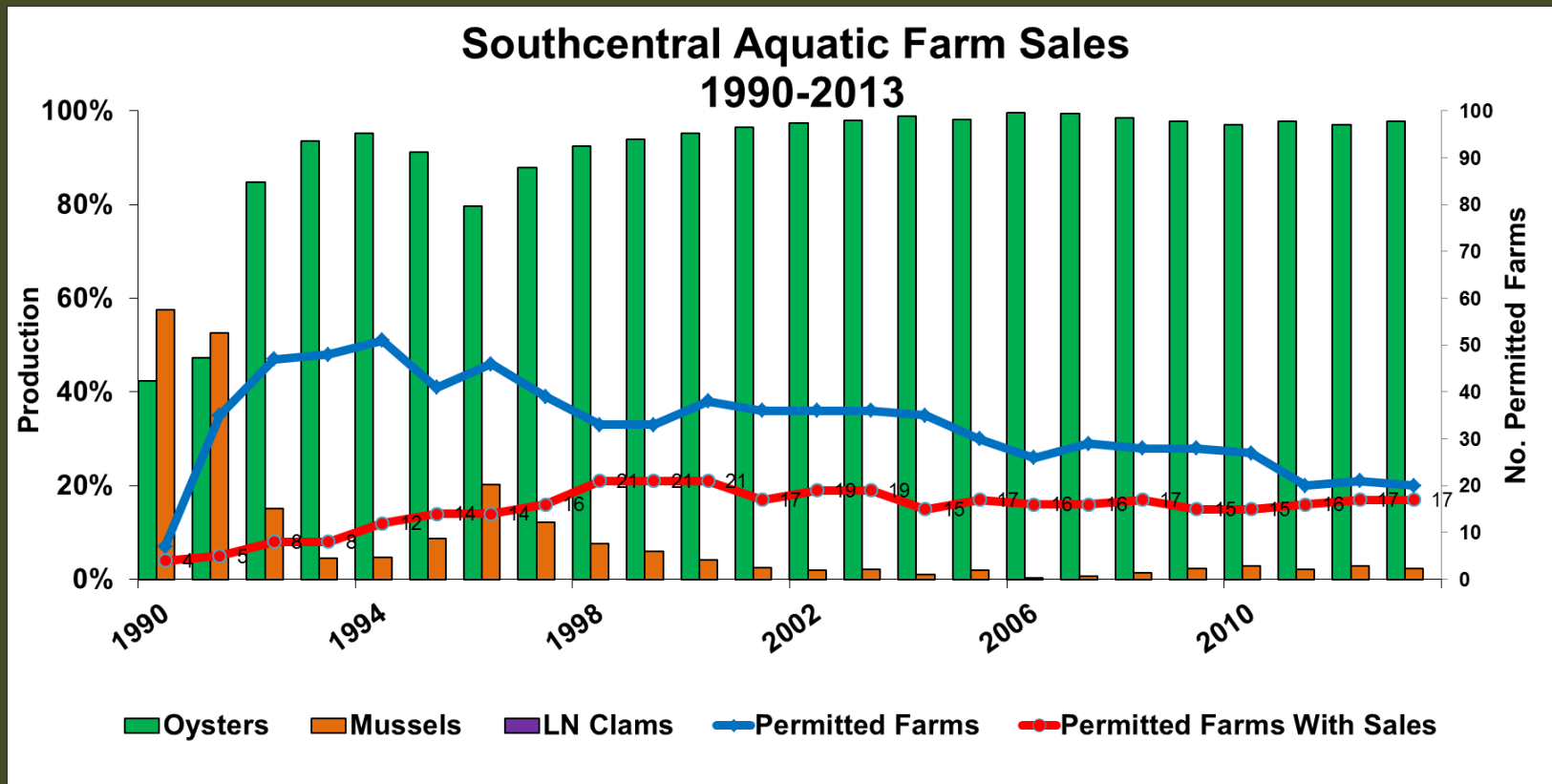
- Geoducks = \$44,064

SE Production Percent By Species



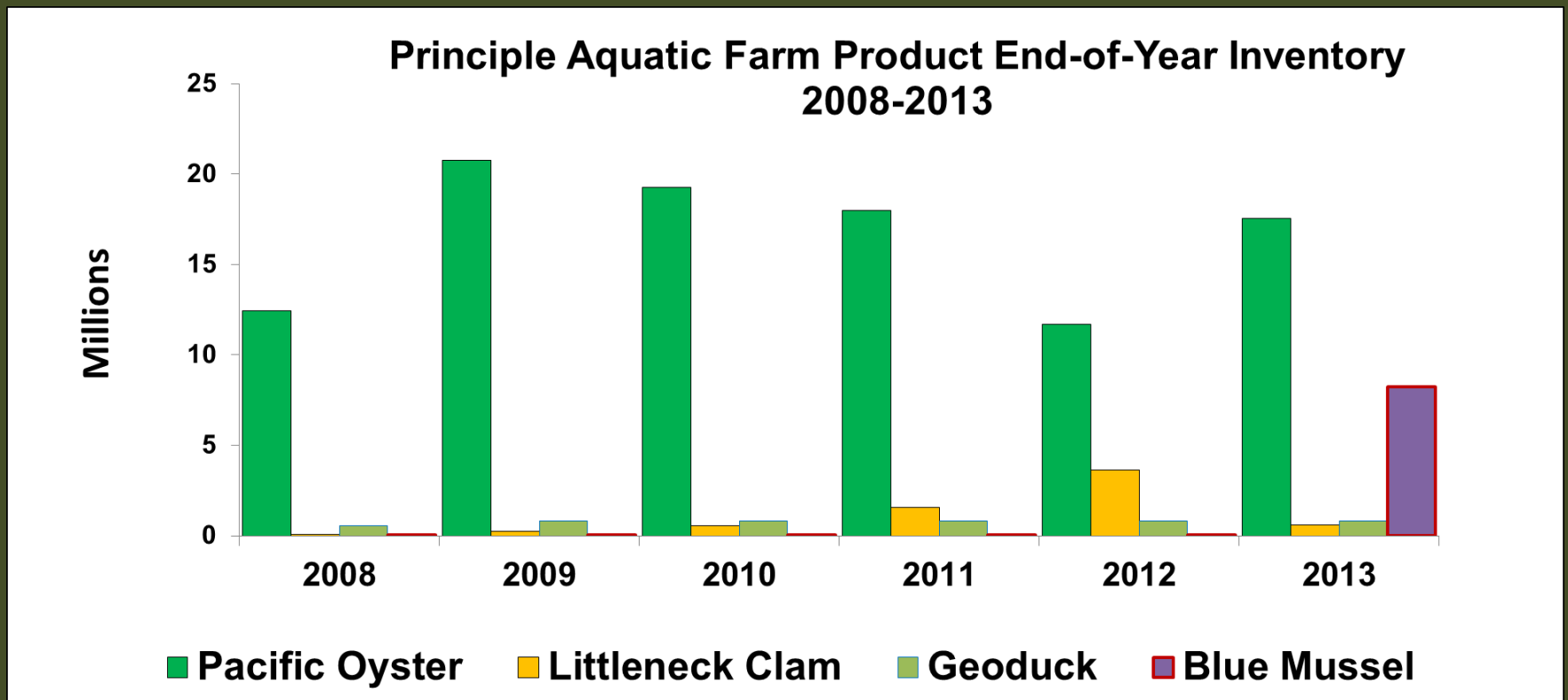
- Pacific oysters made up 87% of SE aquatic farm sales
- Trend shows an increase in the number SE aquatic farmers since 2001

SC Production Percent By Species



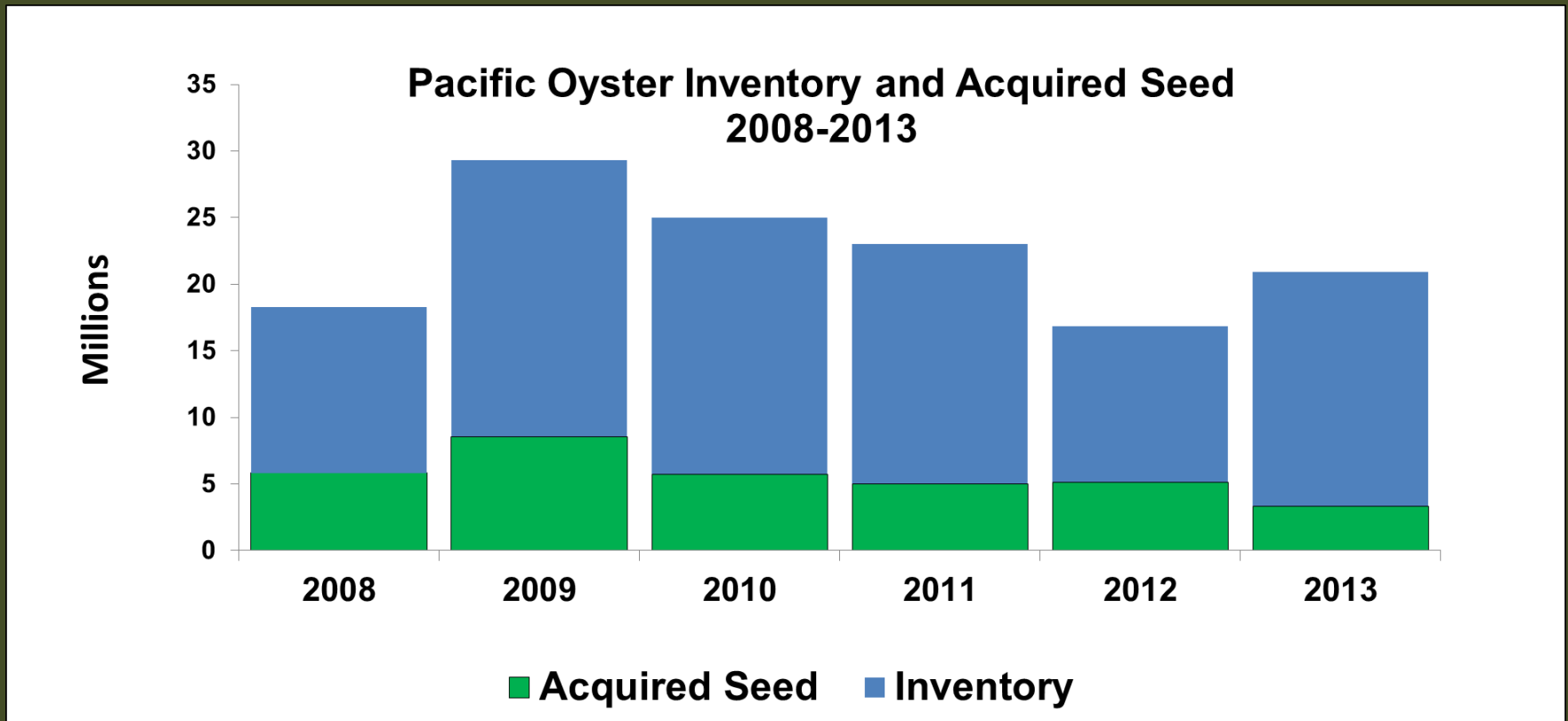
- Pacific oysters made up 98% of SC aquatic farm sales
- Blue mussel production was more prevalent in early years; numbers are expected to increase.

End-of-year Inventory



- 1.9 Million (18%) increase in Pacific oyster inventory from 2012 to 2013 .
- 8.2 Million increase in blue mussel inventory from 2012 to 2013.
- 2.9 Million (84%) decrease in littleneck clam inventory from 2012 to 2013 .

Acquired Seed



- New seed acquired decreased from 5.1 million in 2012 to 3.3 million in 2013 (35%).
- Decline in seed acquisition from 2009 to 2013.
- Proportion of new seed to inventory less in 2013 (19%) compared to 2012 (44%)

State Program Streamlining Efforts

Application (in progress)

- *Separate instructions from actual application*
- *Distinguish agency sections and verify that what is being requested coincides with current regulatory review and determination requirements*
- *Simplify operation and development plan*
- *More focus on narrative and description of operations and how applicant plans to develop the aquatic farm operations over permit duration*
- *Reduce redundancy*

State Program Streamlining Efforts

Annual report (2012)

- *Production (sales) section simplified for yearly data only*
- *Inventory section requires only January and December data*
- *Support facilities, equipment, and gear summary simplified and asks for updates for what is a farm based on last year's information.*
- *Separated instructions from actual application*
- *Made clarifications and simplified the site-specific report for on-bottom*

Annual report (2013)

- *Match changes made in application (Projected and Actual)*

Questions/Comments/Discussions?



Photo taken near Wyatt/Coho Properties nursery,
Tokeen Bay, SE Alaska, 2013