

Units 11 and 13 Overview

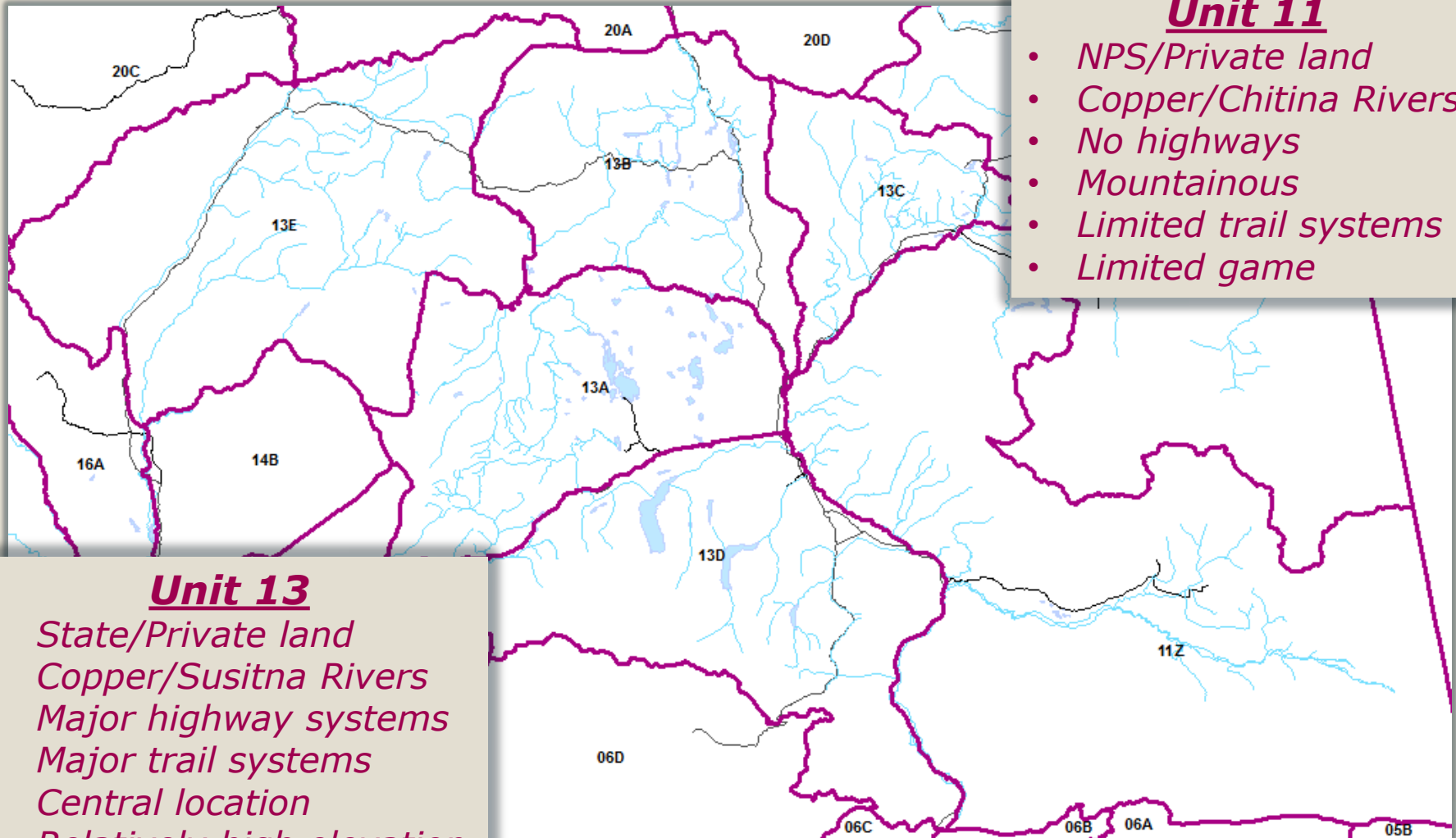
**Board of Game
8-15 February 2013**



**Becky Schwanke AB
Frank Robbins Asst. AB
Glennallen ADF&G**

Unit 11 and 13

Area Details



Unit 11

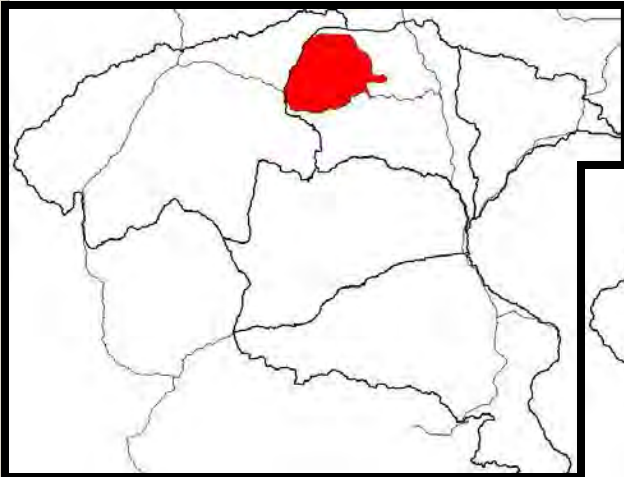
- *NPS/Private land*
- *Copper/Chitina Rivers*
- *No highways*
- *Mountainous*
- *Limited trail systems*
- *Limited game*

Unit 13

- *State/Private land*
- *Copper/Susitna Rivers*
- *Major highway systems*
- *Major trail systems*
- *Central location*
- *Relatively high elevation*
- *Abundant game*

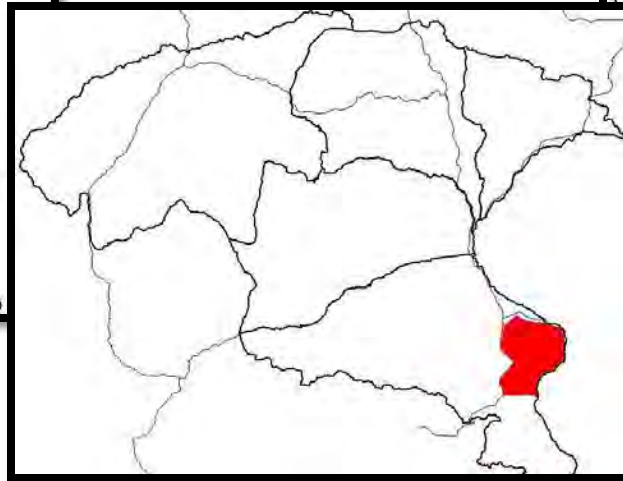
Controlled Use Areas

Clearwater



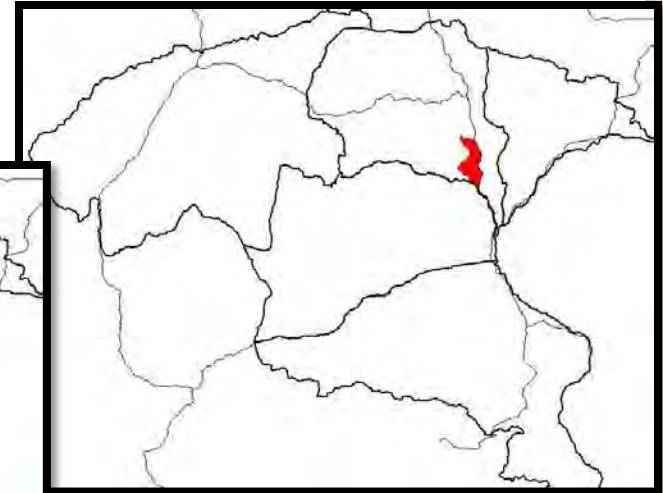
Closed to motorized use for hunting, except for hunting brown bears, wolves, and small game from 15 March – 30 June.

Tonsina



Closed to motorized use and pack animals for hunting from 26 July to 30 Sept.

Sourdough



Closed to motorized use for hunting, except designated trails can be used.

Chitina and Copper River Bison Herds

Chitina River Bison Herd (Unit 11)

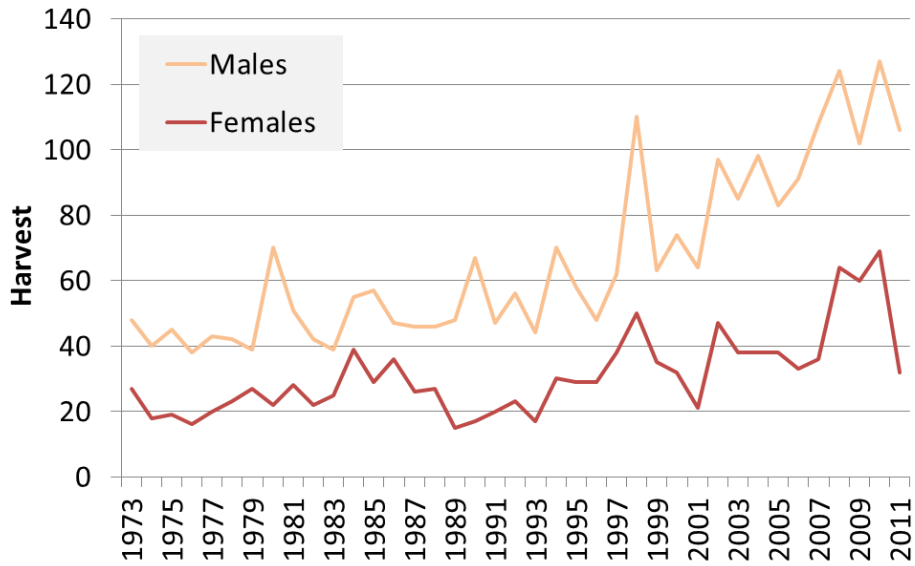
- Population ~ 38 (2000-2012)
- Harvest ~ 1.5 / year (2000-2012)



Copper River Bison Herd (Unit 11/13D)

- Population ~ 116 (2000-2012)
- Harvest ~ 8 / year (2000-2011) RY12 *hunt still open*

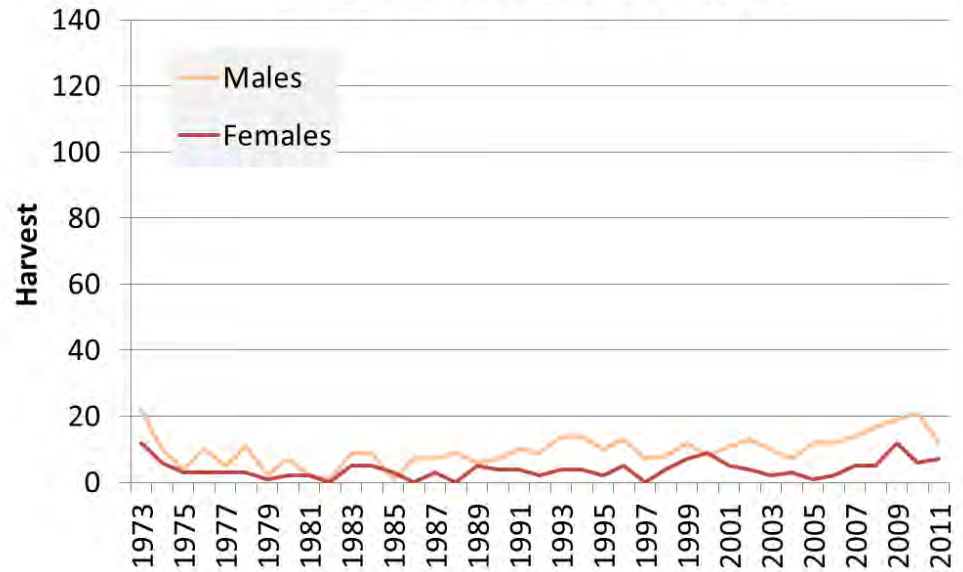
UNIT 13 - BLACK BEAR HARVEST



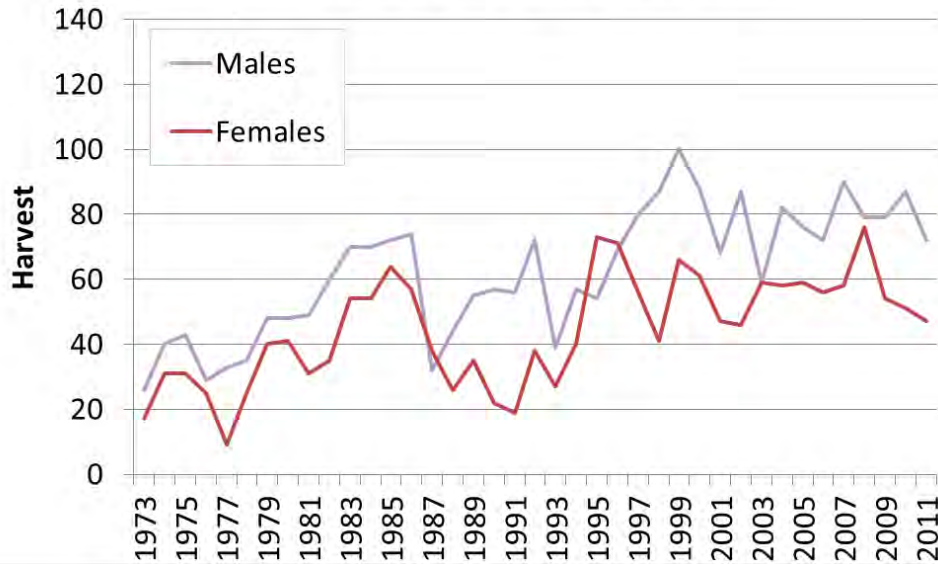
Black Bear

1 Proposal

UNIT 11 - BLACK BEAR HARVEST



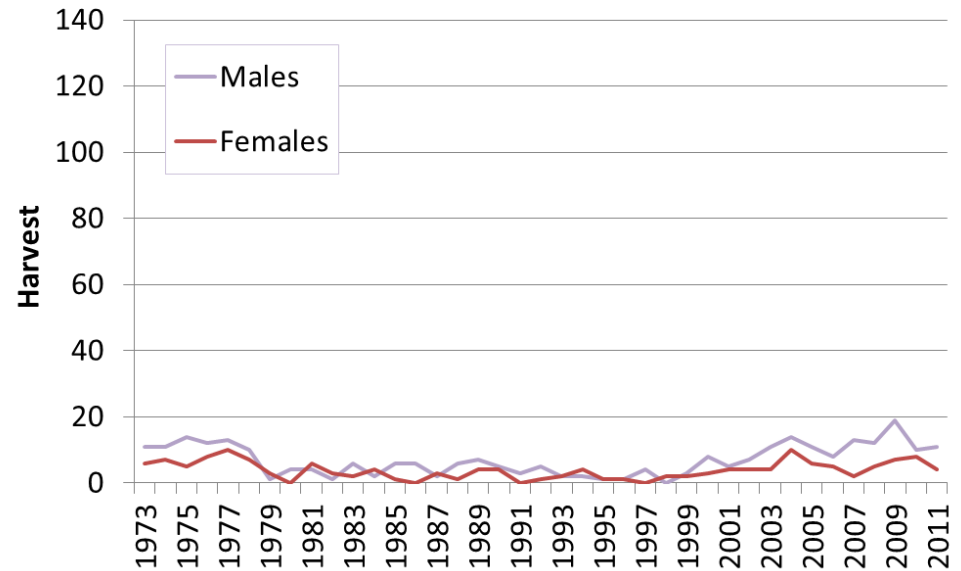
UNIT 13 - BROWN BEAR HARVEST



Brown Bear

5 Proposals

UNIT 11 - BROWN BEAR HARVEST



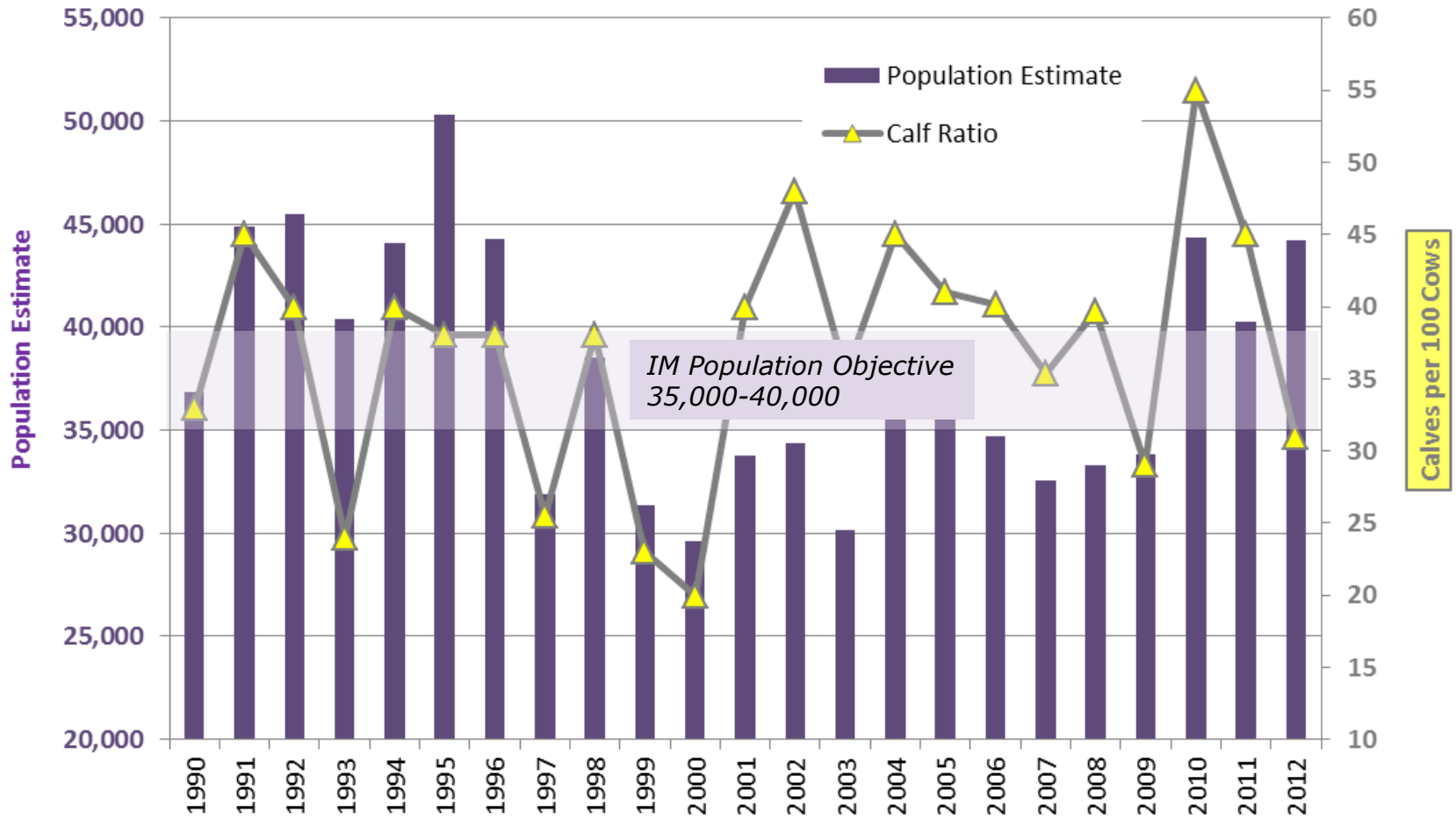
Nelchina Caribou Herd

- ***Moderately sized herd***
>30,000 since 1987
- ***Centrally located***
Between Anchorage/Fairbanks/Tok/Valdez
- ***Tremendous hunter interest***
800 – 5,600 annual take since 1987
- ***Excellent hunter access***

 ***Complex regulations***

Nelchina Caribou Herd

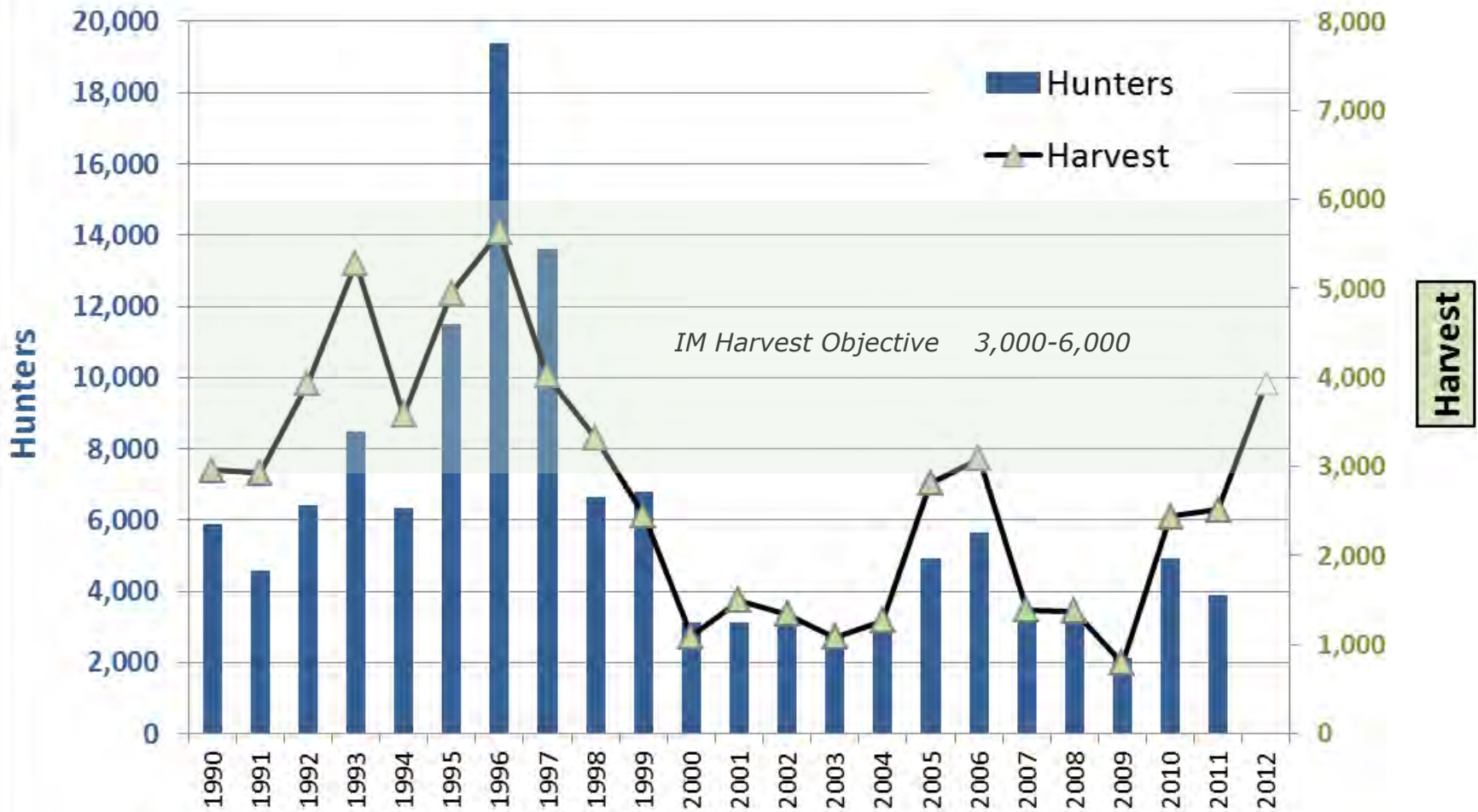
Population and Fall Calf Recruitment



Note: High calf recruitment in 2010 and 2011

Nelchina Caribou Herd

Hunters and Harvest



Unit 13 Caribou Hunting

Regulatory Year 2012-2013 (RY12)



Resident Only Hunts

**Drawing Bull
(DC480-483)**

**Aug. 20 – Sept. 20;
Oct. 21 – Mar. 31**

One bull

Tier I Registration

**Aug. 10 – Sept. 20;
Oct. 21 – Mar. 31**

One caribou

**Community Subs.
(CC001)**

**Aug. 10 – Sept. 20;
Oct. 21 – Mar. 31**

One caribou

Federal Subs.

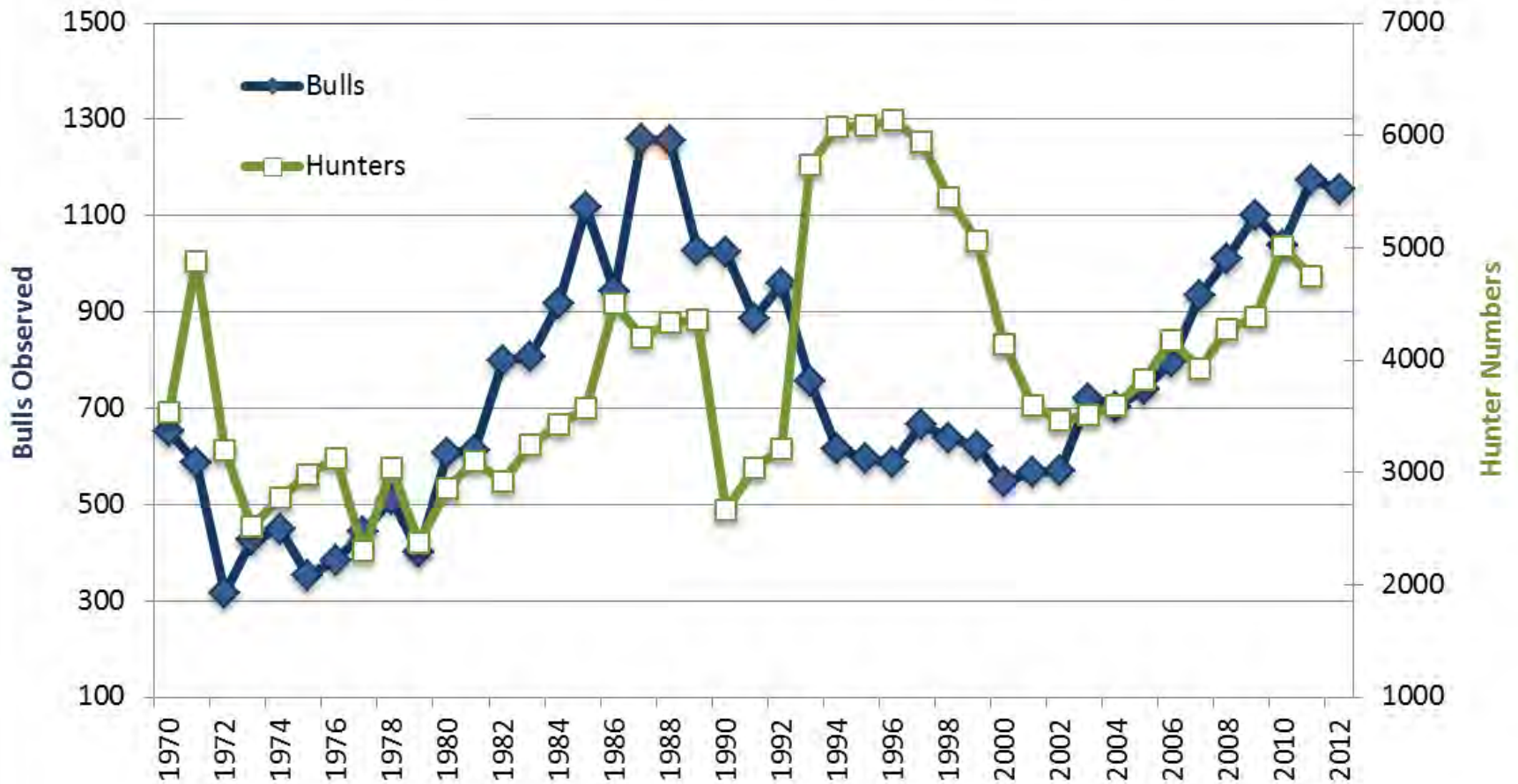
**Aug. 1 – Sept. 30;
Oct. 21 – Mar. 31**

Two caribou

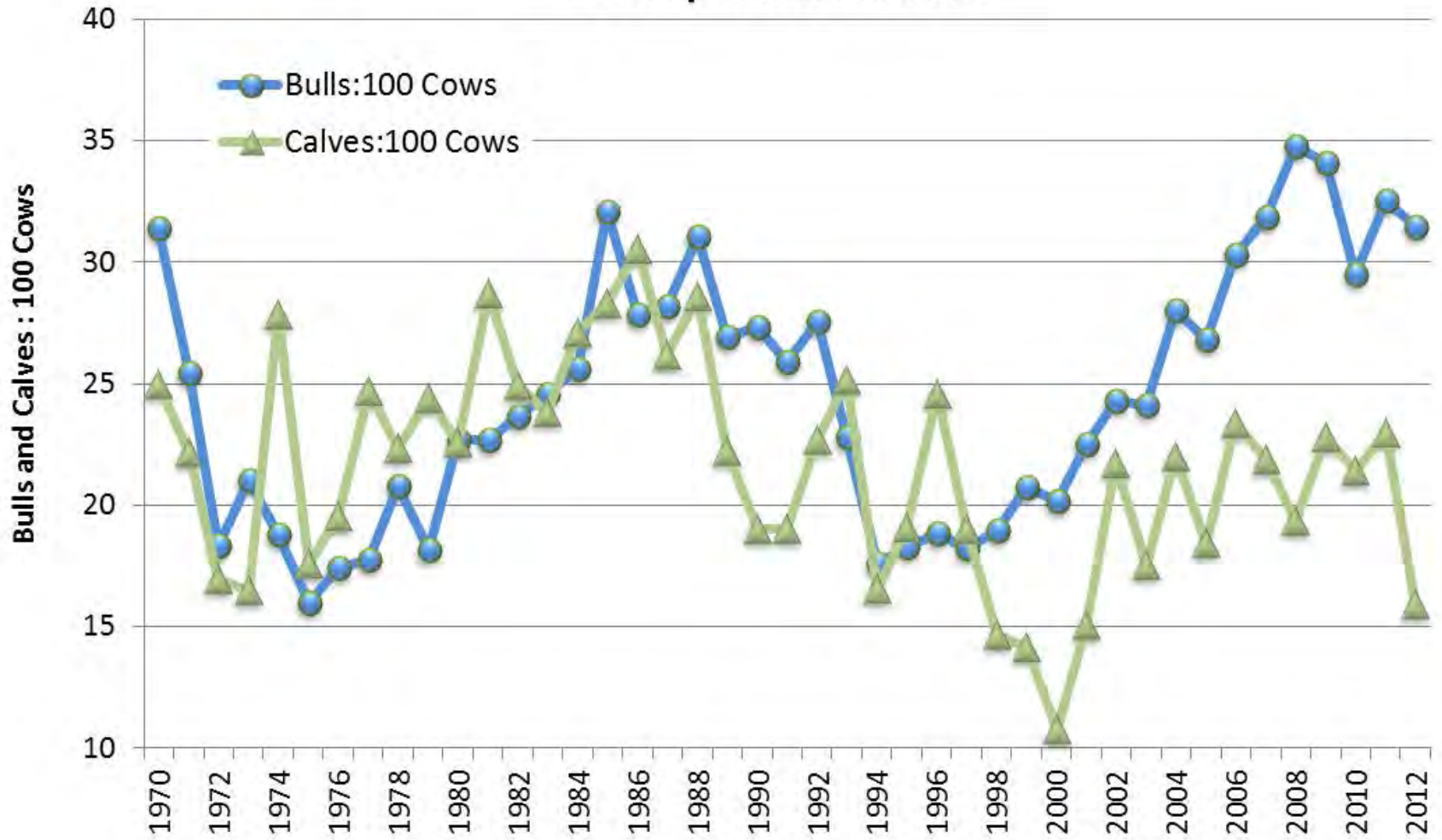
All Hunts Remain Open

Unit 13 Moose

Bulls Observed in Count Areas and Hunter Numbers



Unit 13 Moose Composition Trends

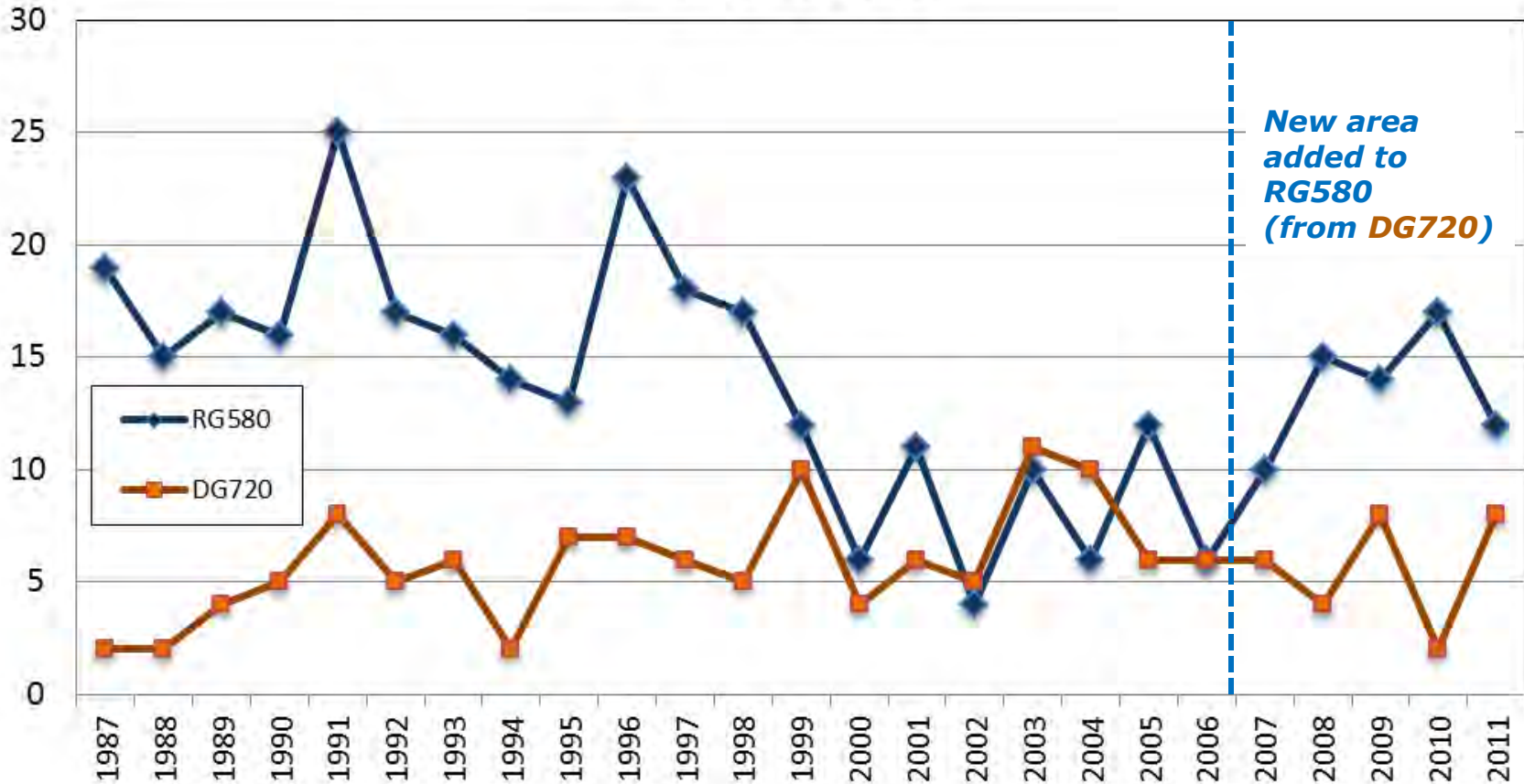


Unit 13 Moose Hunting

Regulatory Year 2012-2013 (RY12)

 Resident Hunts	General Season	Sept. 1 – 20	SF, 50", 4 brow tines
	Drawing Bull (DM330-334)	Sept. 1 – 20	One bull
	Drawing Antlerless (DM325)	Sept. 1 – 20	One antlerless moose, no calves
	Community Subs. (CM300)	Aug. 10 – Sept. 20	One bull
	Federal Subs.	Aug. 1 – Sept. 20	One bull
 NR	Drawing Bull (DM335-339)	Sept. 1 – 20	50", 4 brow tines

Mt Goat Harvests in Units 11 & 13

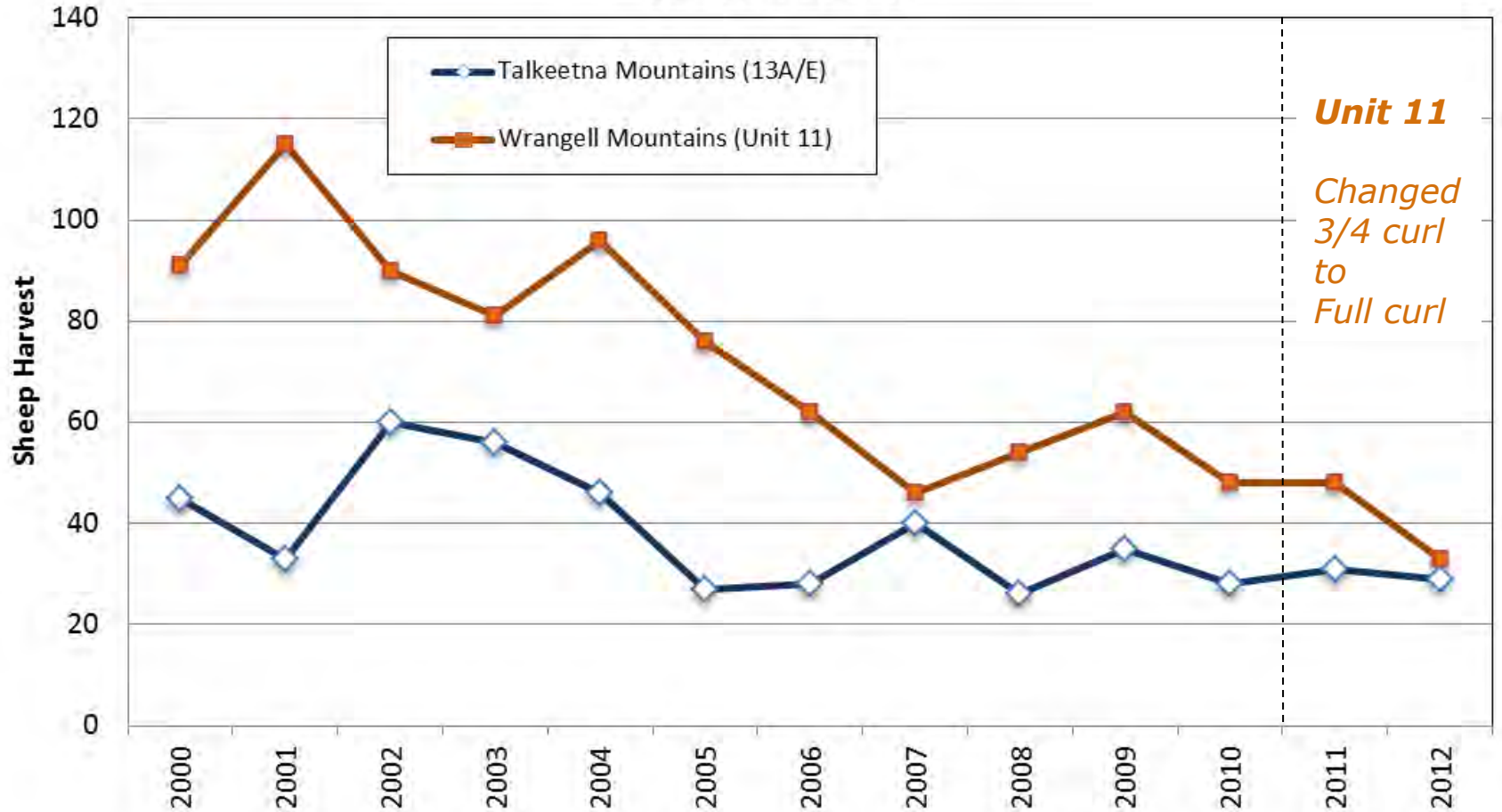


* RG580 includes most of Unit 11, and a small remote portion of subunit 13D since 2007

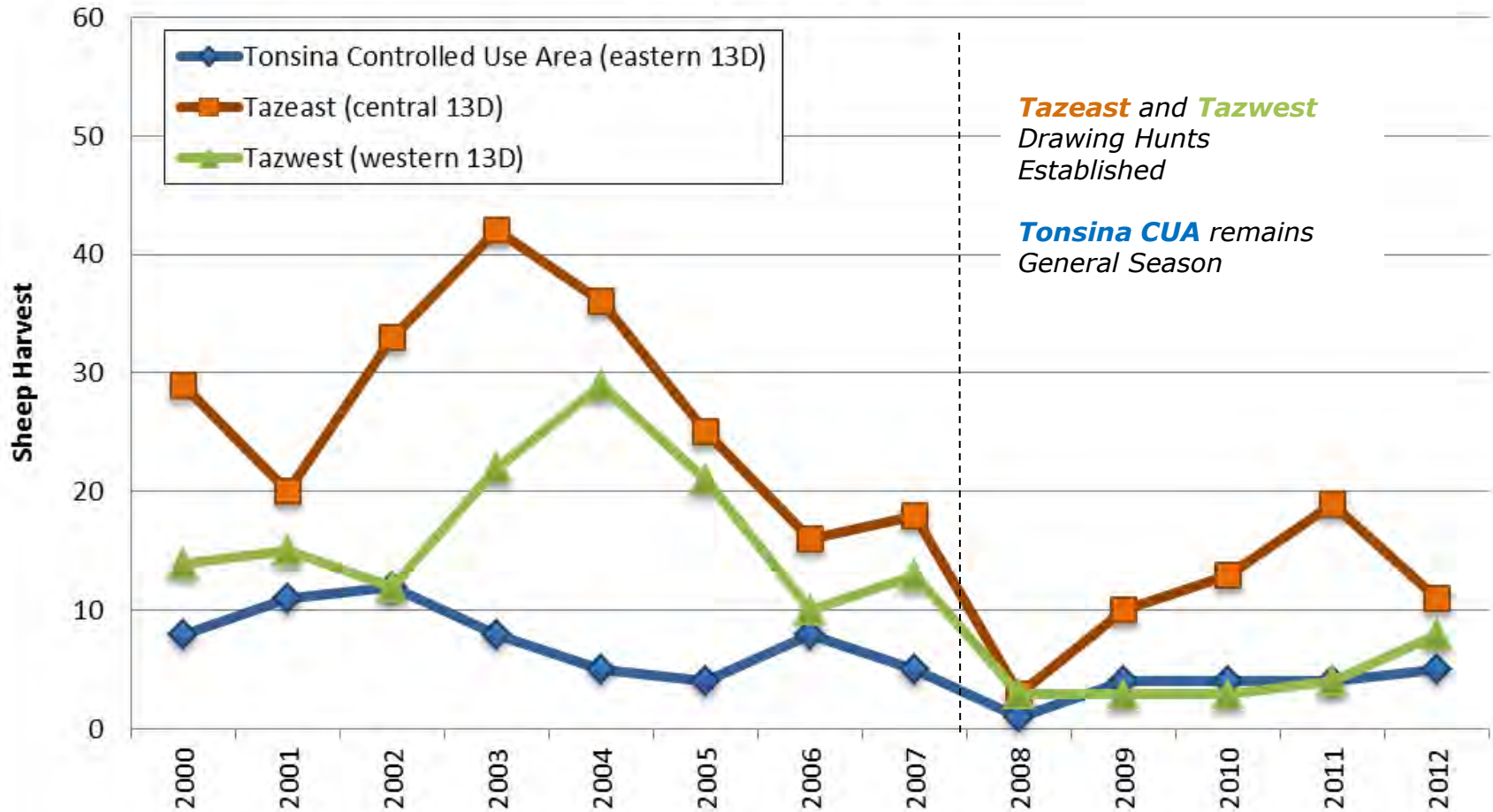
* DG720 includes most of 13D

No Goat Proposals

Dall Sheep Harvest in Units 11 & 13



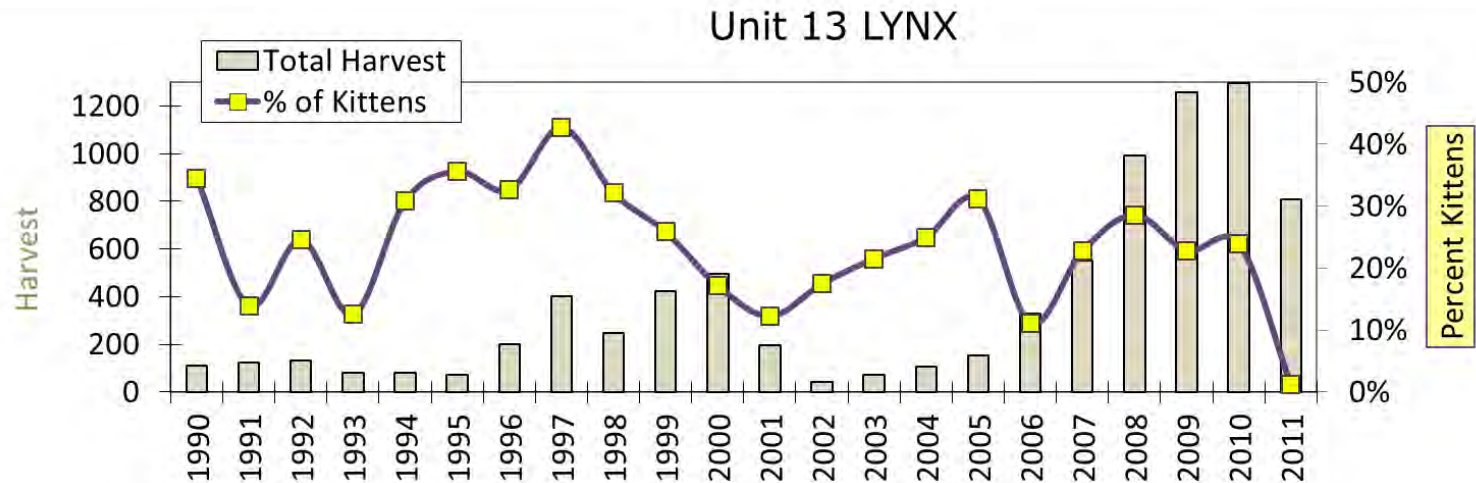
Dall Sheep Harvest in Subunit 13D



3 Chugach Sheep Proposals

Furbearers

- **Beaver** *Stable high*
- **Otter** *Stable*
- **Wolverine** *Stable*
- **Fox** *Stable*
- **Coyote** *Stable high*
- **Marten** *Very low*
- **Mink** *Stable*
- **Lynx** *Rapidly declining*



No Furbearer Proposals

Unit 13 Intensive Management

March 2000

Unit13 wolf control implementation plan adopted to increase moose

[Only a portion of 13A, 13B, and 13E were open to predation control]

[Same Day Airborne (SDA) take was not allowed by the administration until January 2004]

March 2005

Unit 13 wolf control implementation plan reauthorized

[13C was added and the area open to predation control was expanded]

December 2010

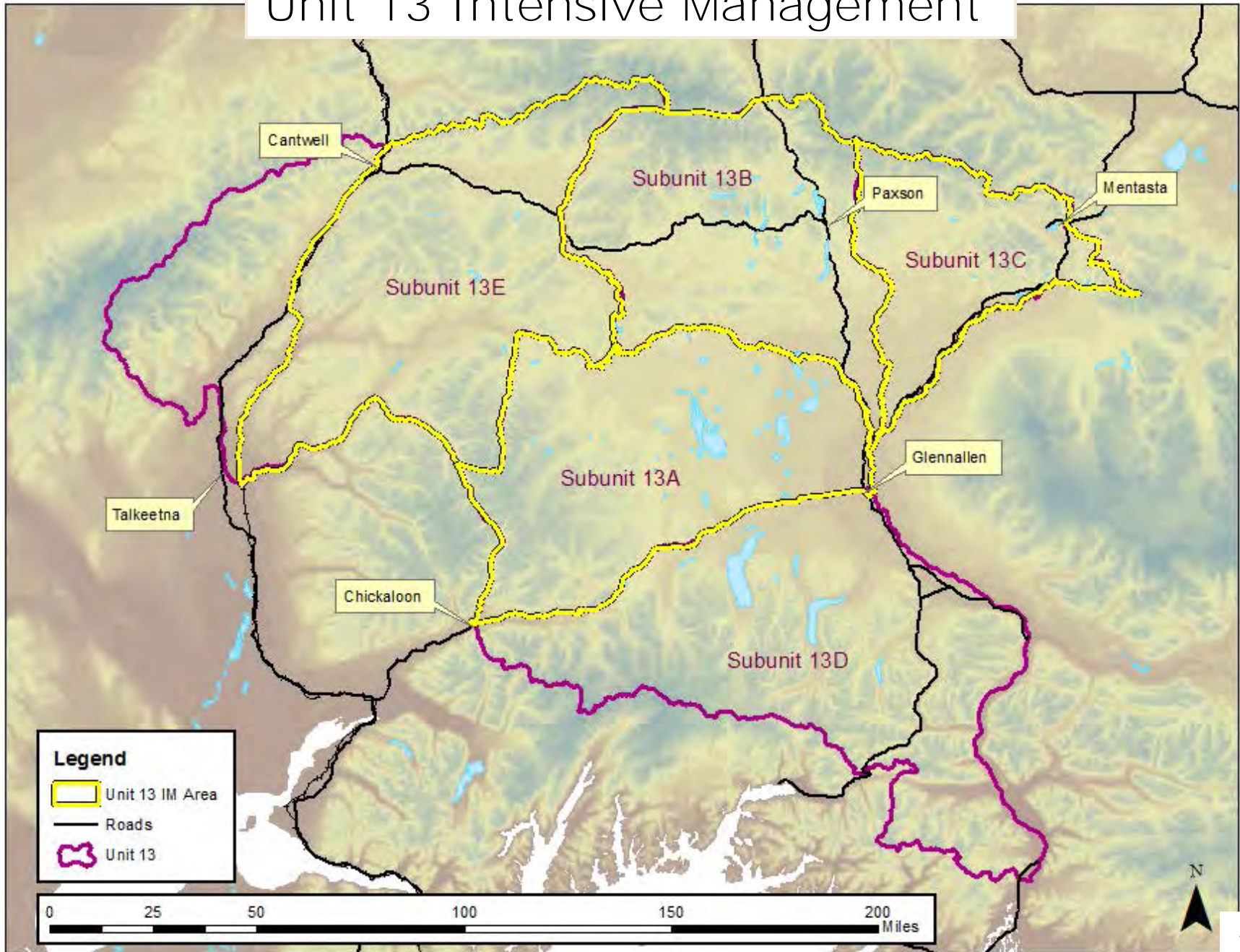
Unit 13 wolf control implementation plan reauthorized

(set to expire 15 December October 2016)

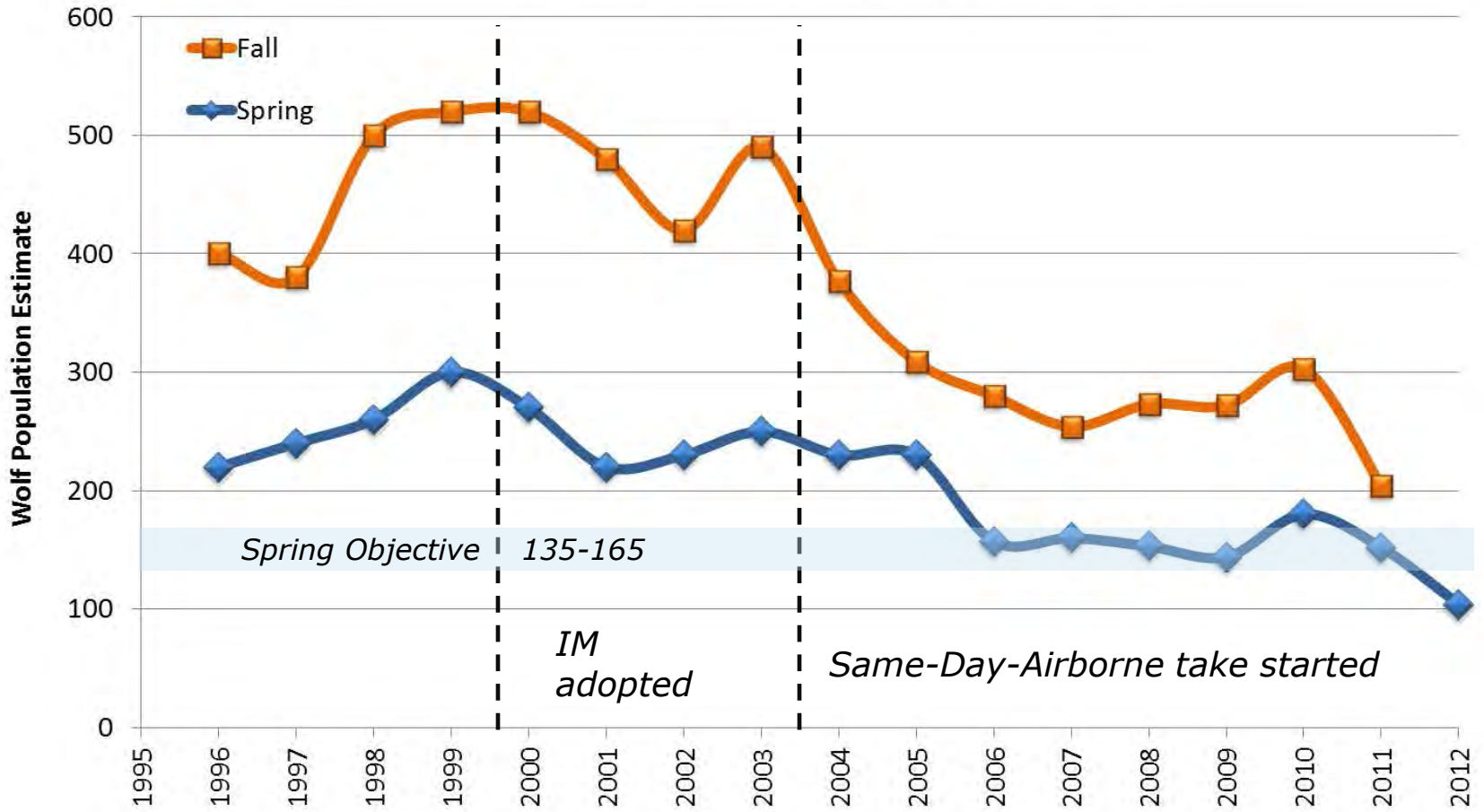
November 2012

No private control permits issued due to low wolf numbers

Unit 13 Intensive Management



Unit 13 Wolf Population Estimates



Unit 13 Intensive Management

Moose Objectives and Current Estimates

(Below Objectives vs Meeting Objectives)

	<u>Population</u>	<u>Harvest</u>	<u>Bull-to-Cow</u>
13(A)	3,500 - 4,200	210 – 420	25 : 100
2012	<i>3,650</i>	<i>293 RY11</i>	<i>26 : 100</i>
13(B)	5,300 – 6,300	310 – 620	25 :100
2012	<i>5,350</i>	<i>268 RY11</i>	<i>34 :100</i>
13(C)	2,600 – 3,500	155 – 350	25 : 100
2012	<i>1,675</i>	<i>113 RY11</i>	<i>30 : 100</i>
13(D)*	1,200 – 1,900	75 – 190	<i>no obj.</i>
2012	<i>1,950</i>	<i>83 RY11</i>	<i>67 : 100</i>
13(E)	5,000 – 6,000	300 – 600	25 : 100
2012	<i>5,570</i>	<i>180 RY11</i>	<i>31 : 100</i>

* 13(D) is outside the wolf predation control area

Unit 13 Intensive Management Effectiveness

<u>Observed Moose</u>	<u>2000</u>	<u>2012*</u>	<u>% Increase</u>	<u>Ave. Annual % Increase</u>
Cows	2,710	3,667	35%	3%
Bulls	547	1,154	111%	9%
Calves	292	583	100%	8%
Calves: 100 cows	11	16	47%	4%
Bulls: 100 cows	20	32	56%	5%

* 2012 calf ratios were lower than previous years
due to an annual weather effect.

In 2011, a total of 827 calves were observed (up 183%, 17% per year,
with 23 calves: 100 cows (up 130%, 12% per year).

Thank-you

