



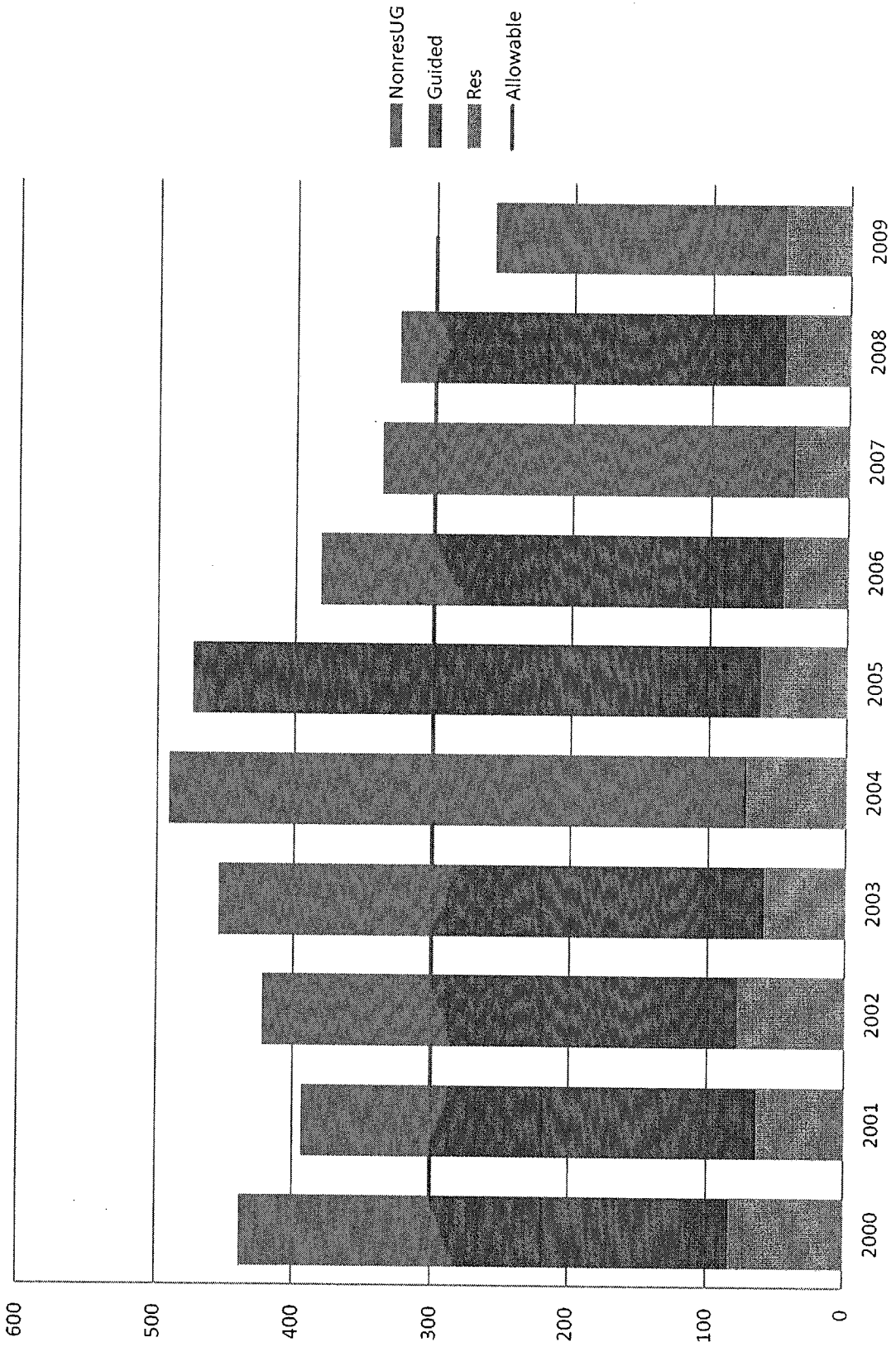
# Black Bear Harvest Assessment

GMU / Island	Total Area (mi <sup>2</sup> )	Estimated Bear Density (bears/mi <sup>2</sup> )	Estimated Bear Population Size	Mean Annual Reported Harvest (2000 – 2010)	Unrecovered (25%)	Adjusted Annual Hunting Mortality	Estimated Existing Mortality Rate (%)	Estimated Sustainable Mortality Level (annual total)	Allowable Reported Harvest (total less 25%)
1A	2490	0.5 – 1.0	1245 – 2490	83	21	104	8.0 – 10.0	124	93
1B	3000	0.1 – 0.25	300 – 750	17	4	21	3.0 – 7.0	30	23
1C (Remainder)	6300	0.2 – 0.5	1260 – 3150	59	15	74	2.0 – 6.0	126	95
1C (South of Taku)	1300	0.25 – 0.5	325 – 650	47	12	59	9.0 – 18.0	40	32
1D	2854	0.1 – 0.25	285 – 715	32	8	40	6.0 – 14.0	40	32
2	3250	1.25	4050	388	97	485	12.0	400	300
3 (Kuiu)	750	1.5 – 2.5	1125 – 1875	114	29	143	8.0 – 13.0	112	84
3 (Kupreanof)	1090	1.0 – 1.5	1090 – 1635	97	23	120	7.0 – 11.0	109	80
3* (Remainder)	874	0.5 – 1.0	437 – 874	16	4	20	2.3 – 4.6	44	33
5	5800	0.1 – 0.25	580 – 1450	18	5	23	2.0 – 4.0	58	44

\* Excludes Zarembo and Coronation Islands

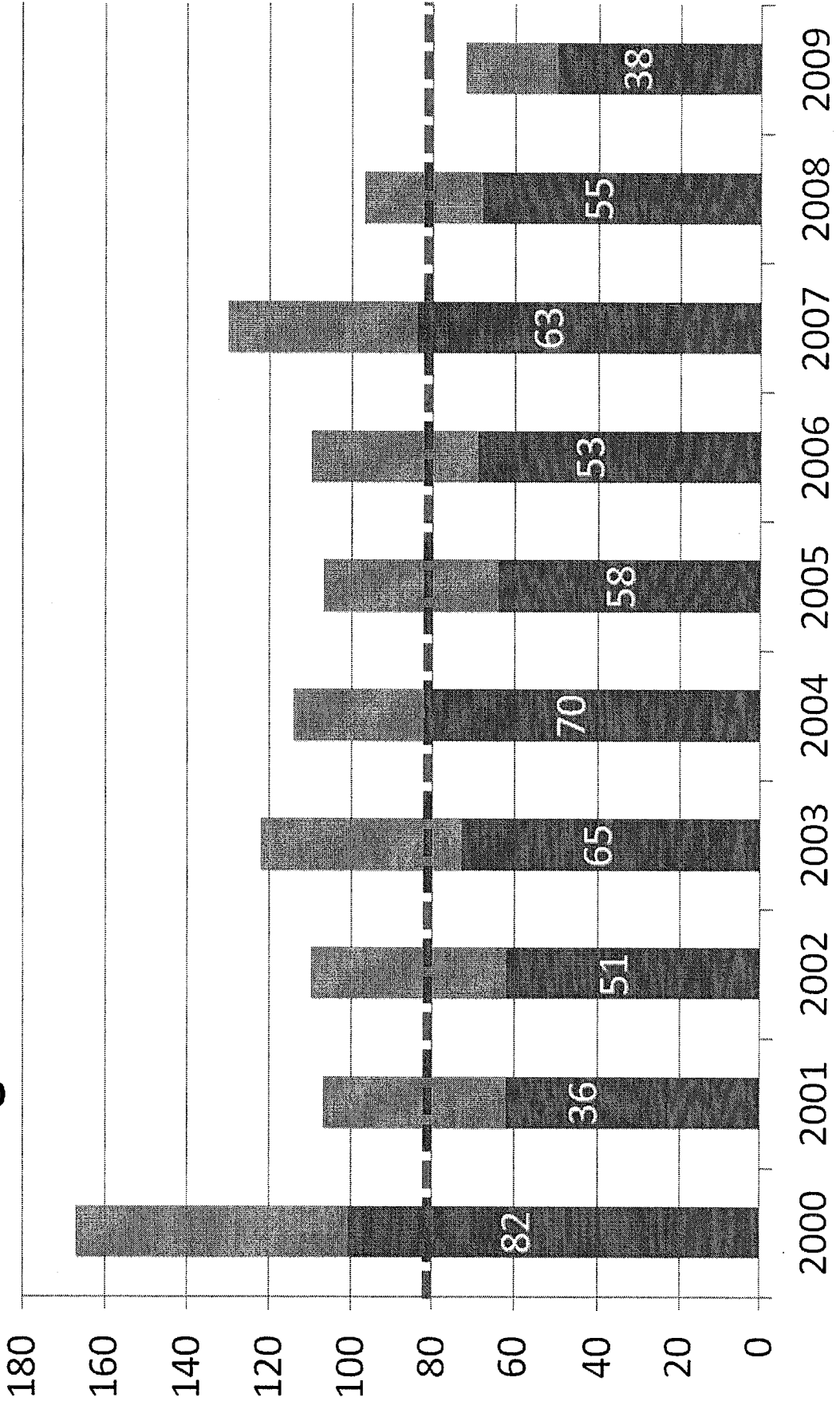
# RC42

## Unit 2 Harvest History

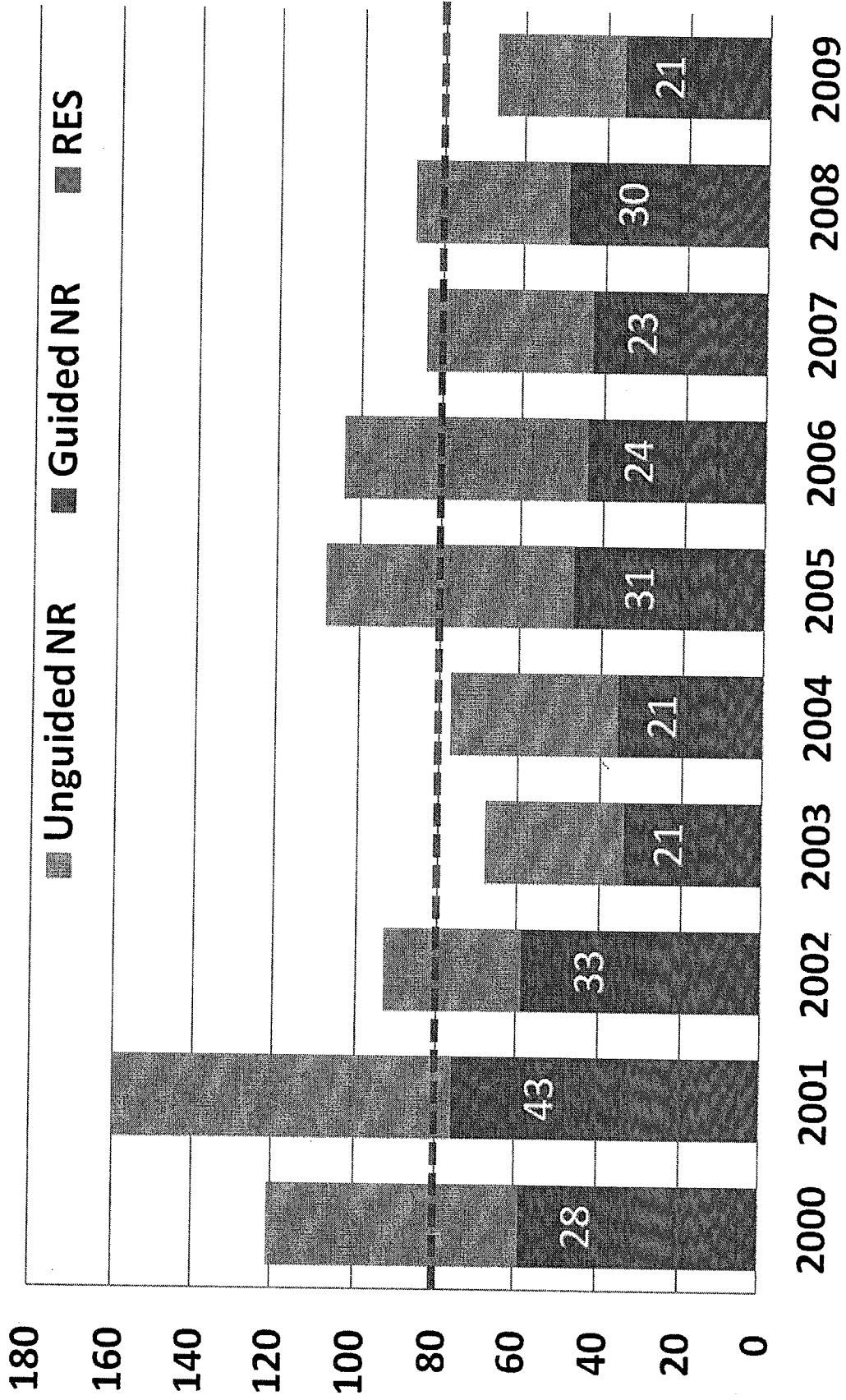


# Kuiu Island

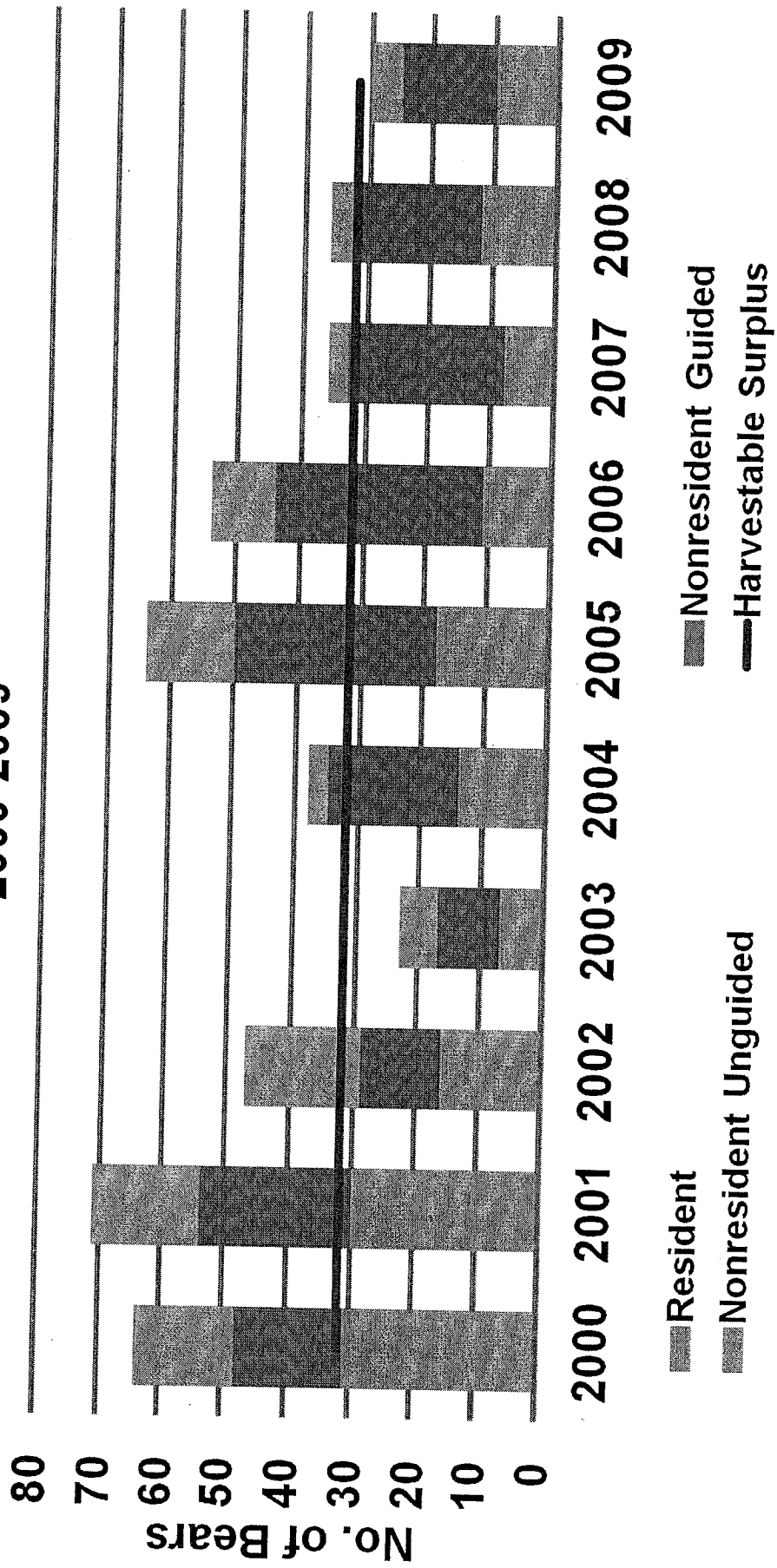
■ Unguided NR   ■ Guided NR   ■ Res



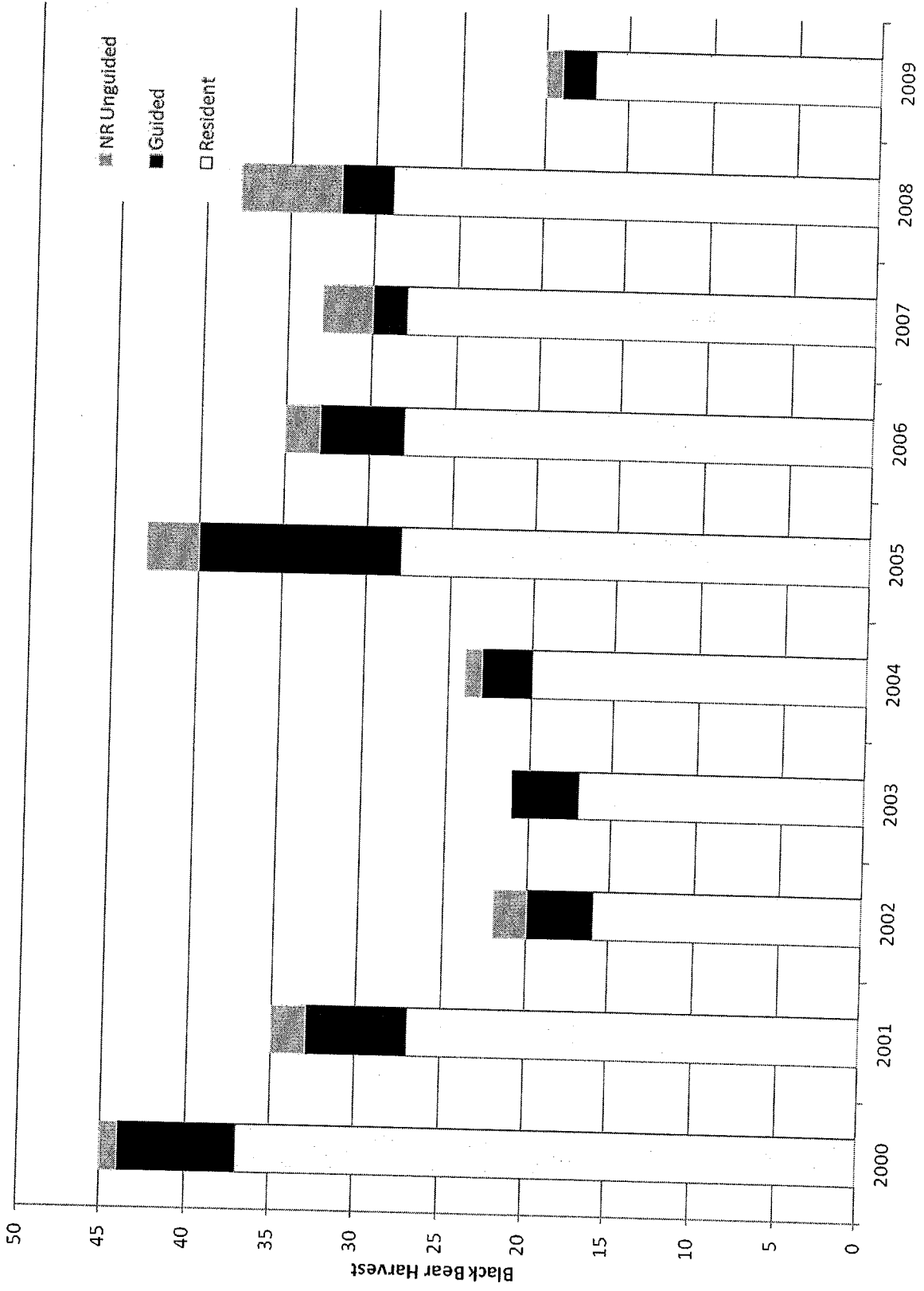
# Kupreanof Island



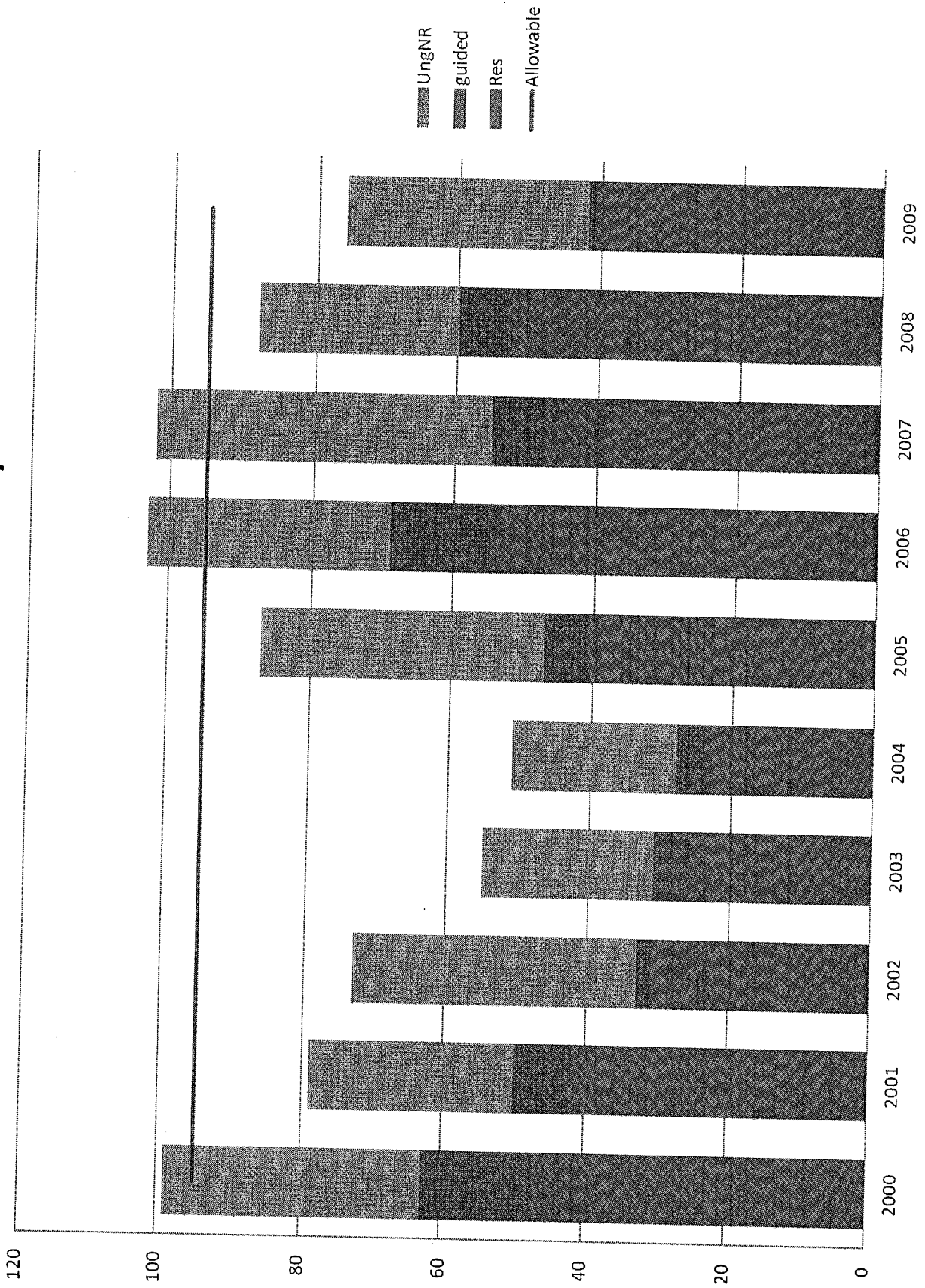
# Unit 1C Taku Inlet to Cape Fanshaw Black Bear Harvest 2000-2009

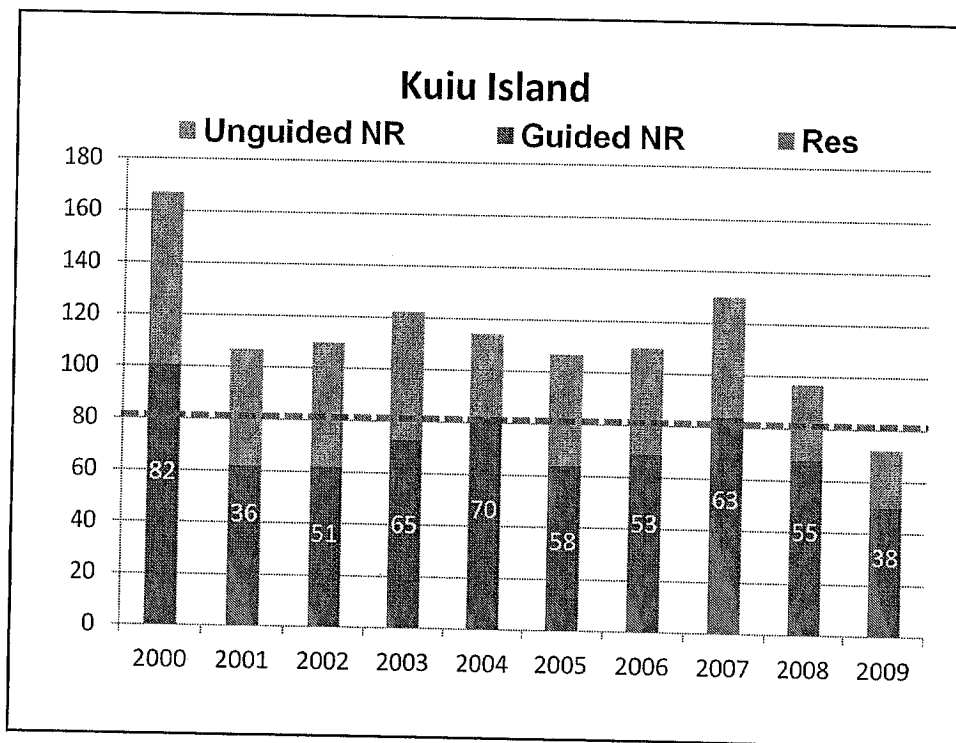
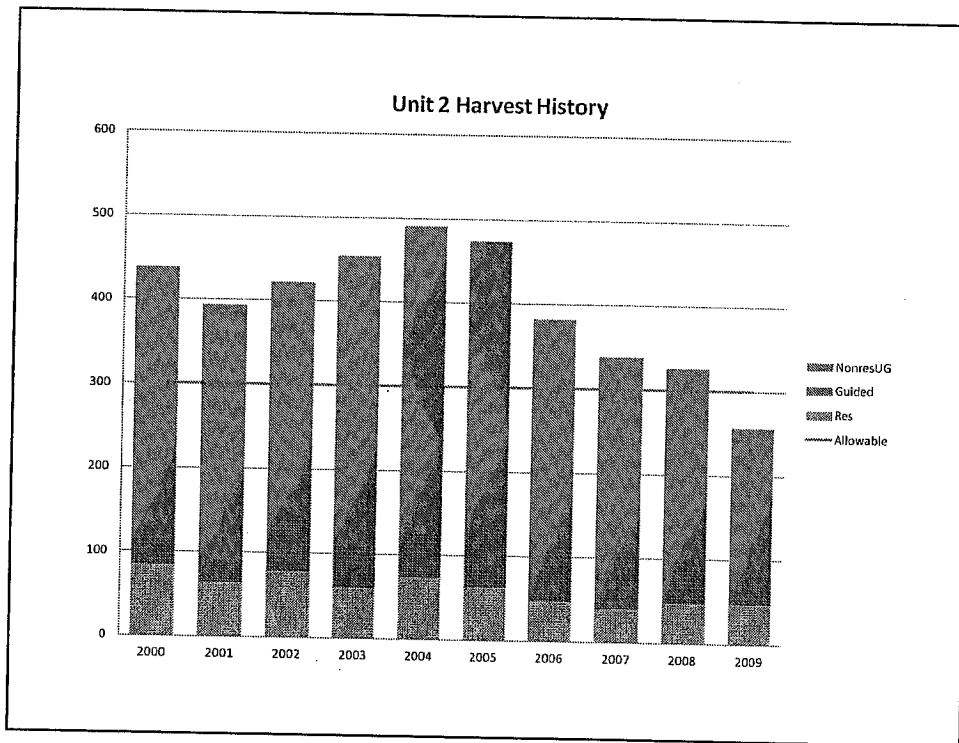


# Unit 1D Black Bear Harvest 2000-2009



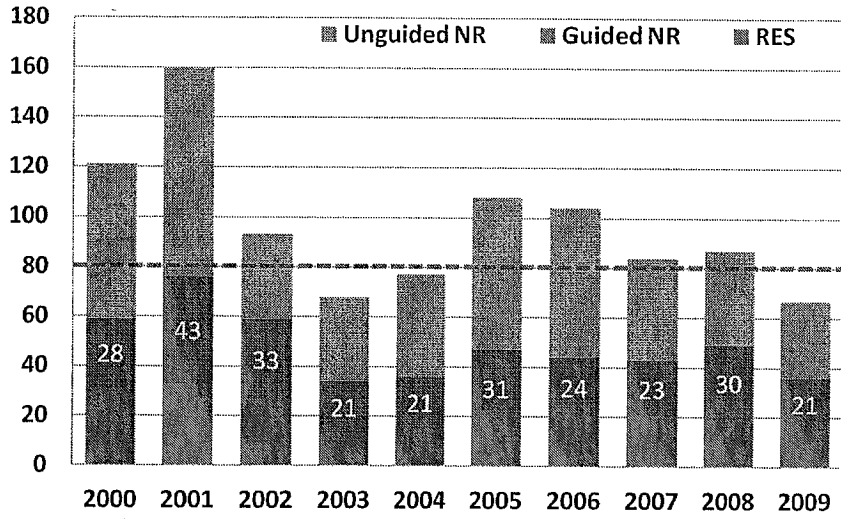
# Unit 1A Harvest History



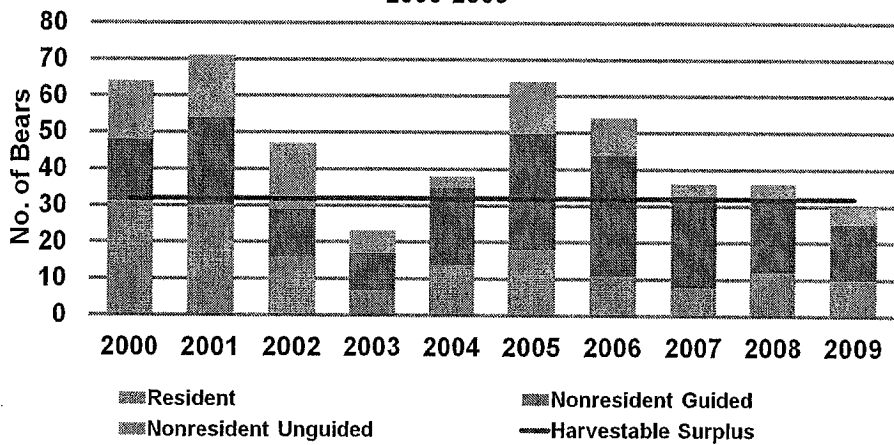




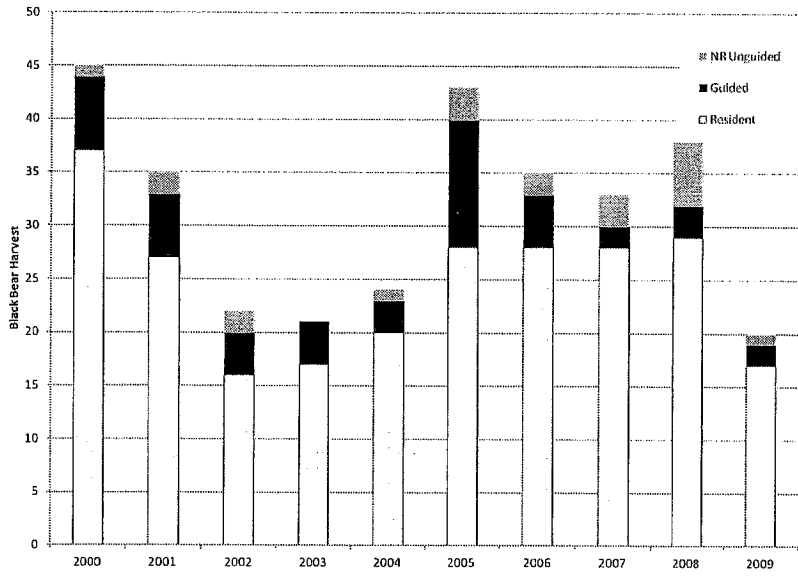
## Kupreanof Island



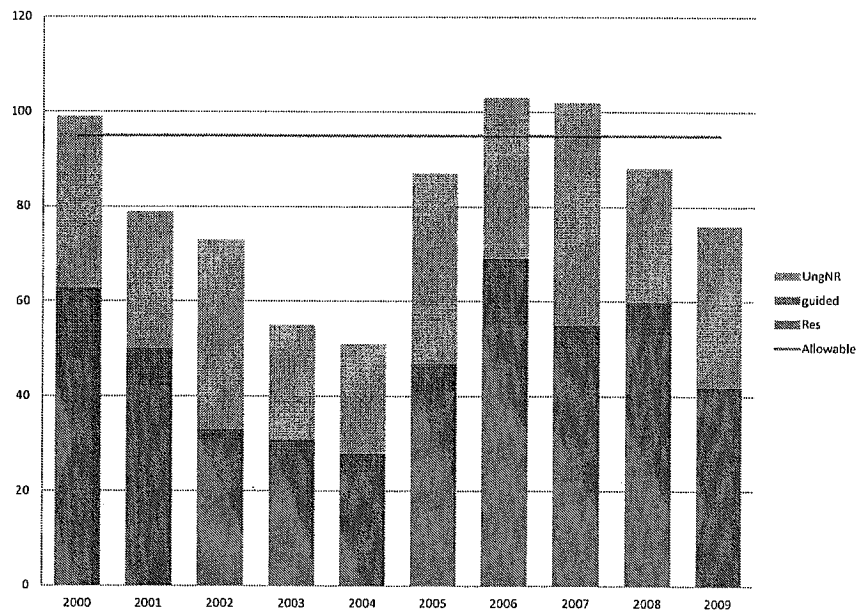
## Unit 1C Taku Inlet to Cape Fanshaw Black Bear Harvest 2000-2009



Unit 1D Black Bear Harvest 2000-2009



Unit 1A Harvest History



# Unguided Nonresident Permit Drawing Hunts for Units 1-3

RC43

Hunt Area	3-Yr Average (2007-2009)		2012 Harvestable		Spring and Fall		Proposed Permits to be Issued	"Up To Number"
	Resident	Guided Nonres	Unguided Nonres	Total Harvest	Surplus	Proposed 2012 Unguided Nonres		
1A	48	7	37	92	95	40	80	100
1B	6	5	7	18	23	12	24	40
1C North	30	0	3	33	40	7	14	30
1C South	10	20	5	35	32	5	10	20
1C Remainder	16	4	8	28	40	12	24	30
1D	25	2	3	30	32	5	10	20
2	45	49	218	312	250	155	310	500
Kuiu	15	52	32	99	84	20	40	50
Kupreanof	18	25	37	80	80	40	80	100
Unit 3 Remainder	12	0	5	17	33	20	40	50

RC 44

11/9/2010

## Proposal 37A

### Drawing Hunts for Unguided Nonresident Black Bear Hunters in Units 1-3

#### Drawing Permits for Unguided Nonresidents in Units 1-3

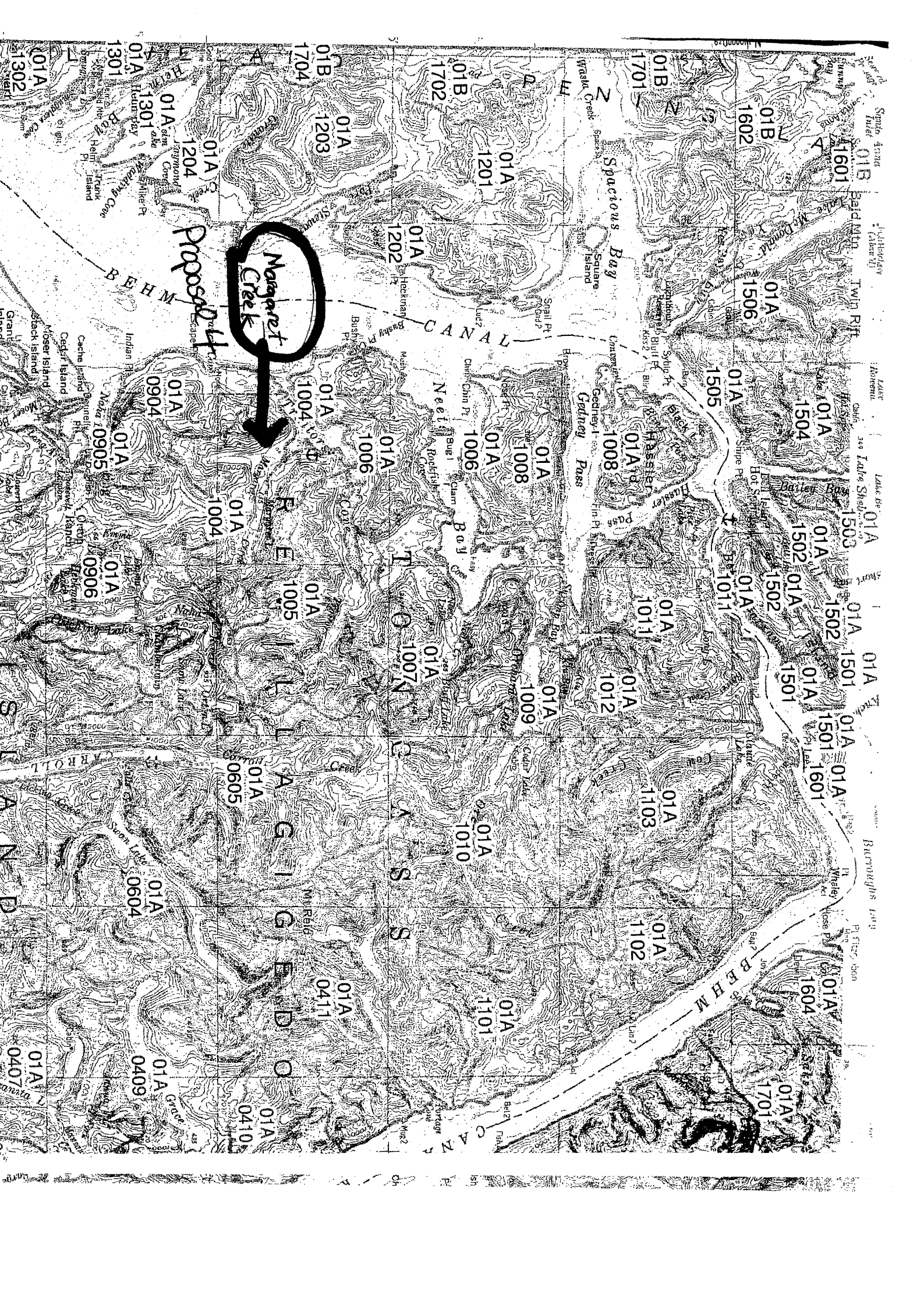
Area	Res	Guided	Unguided	Total	Harvestable Surplus	Proposed Unguided	Proposed Permits	Up to Permits
1A	48	7	37	92	95	40	80	100
1B	6	5	7	18	23	12	24	40
1CN	30	0	3	33	40	7	14	30
1CS	10	20	5	35	32	5	10	20
1C Rem	16	4	8	28	40	12	24	30
1D	25	2	3	30	32	5	10	20
2	45	49	218	312	250	155	310	500
Kuiu	15	52	32	99	84	20	40	50
Kup	18	25	37	80	80	40	80	100
3 Rem	12	0	5	17	33	20	40	50

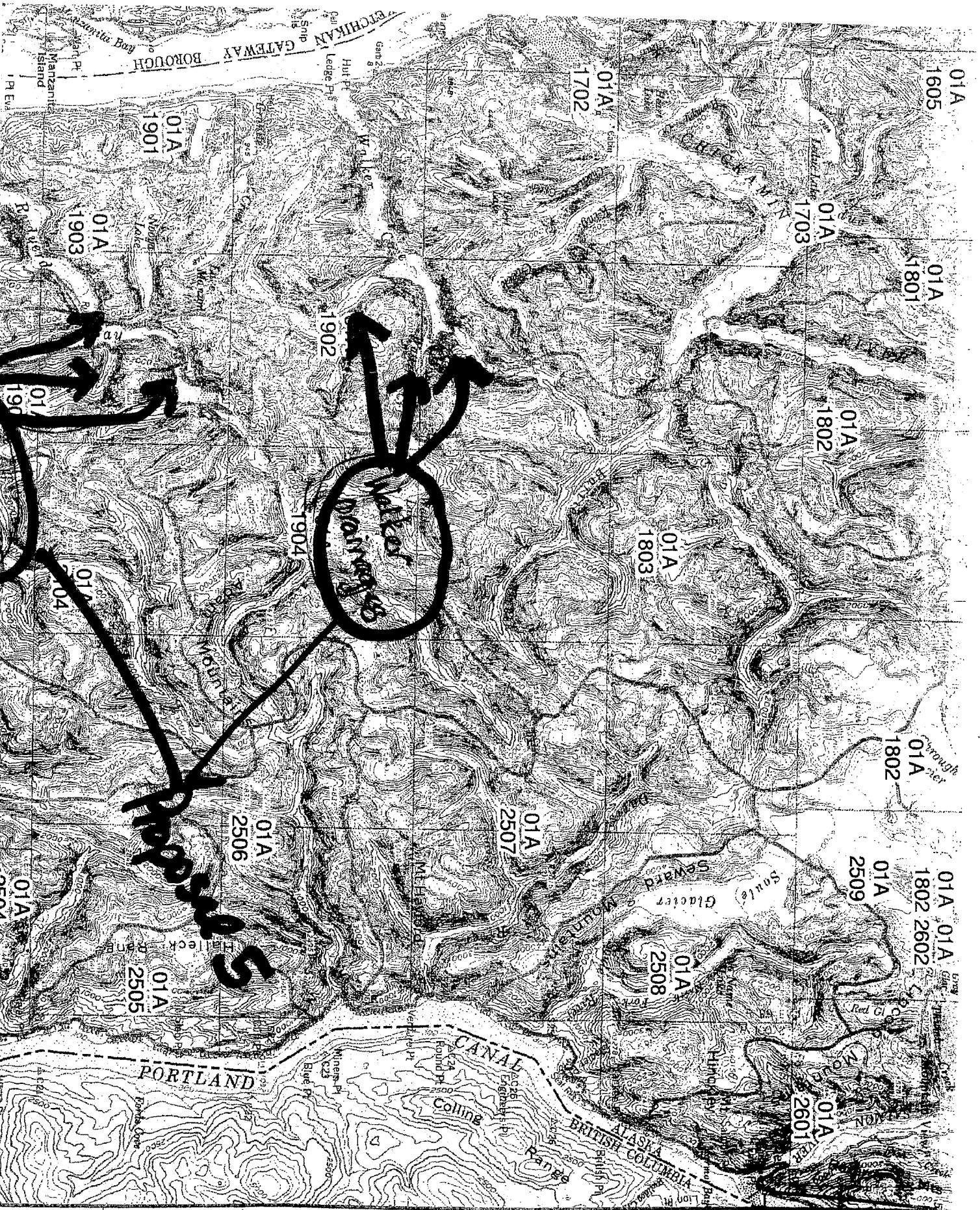
### 3-year average (2007-2009) Harvest

Hunt Area	Resident	Guided	Unguided	Total
1A	48	7	37	92
1B	6	5	7	18
1C North	30	0	3	33
1C South	10	20	5	35
1C Rem	16	4	8	28
1D	25	2	3	30
2	45	49	218	312
Kuiu	15	52	32	99
Kupreanof	18	25	37	80
3 Rem	12	0	5	17

### Drawing Permit Allocation

Hunt Area	Target 2012 Unguided Non	Proposed 2012 Permits	"Up to" Permits
1A	40	80	100
1B	12	24	40
1C North	7	14	30
1C South	5	10	20
1C Remainder	12	24	30
1D	5	10	20
2	155	310	500
Kuiu	20	40	50
Kupreanof	40	80	100
3 Remainder	20	40	50





ETCHIKAN GATEWAY BOROUGH

Water Damages

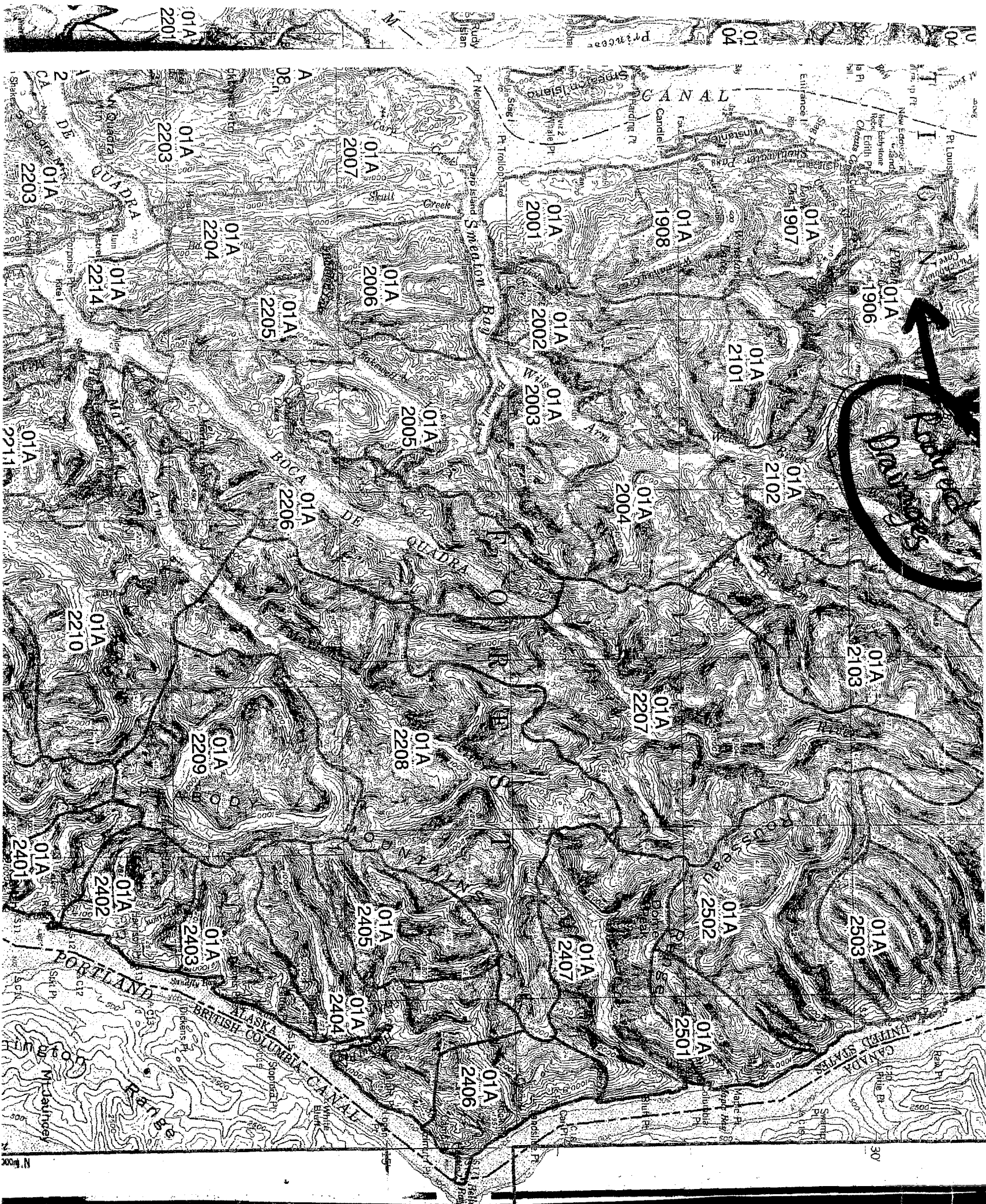
Proposed S

PORTLAND

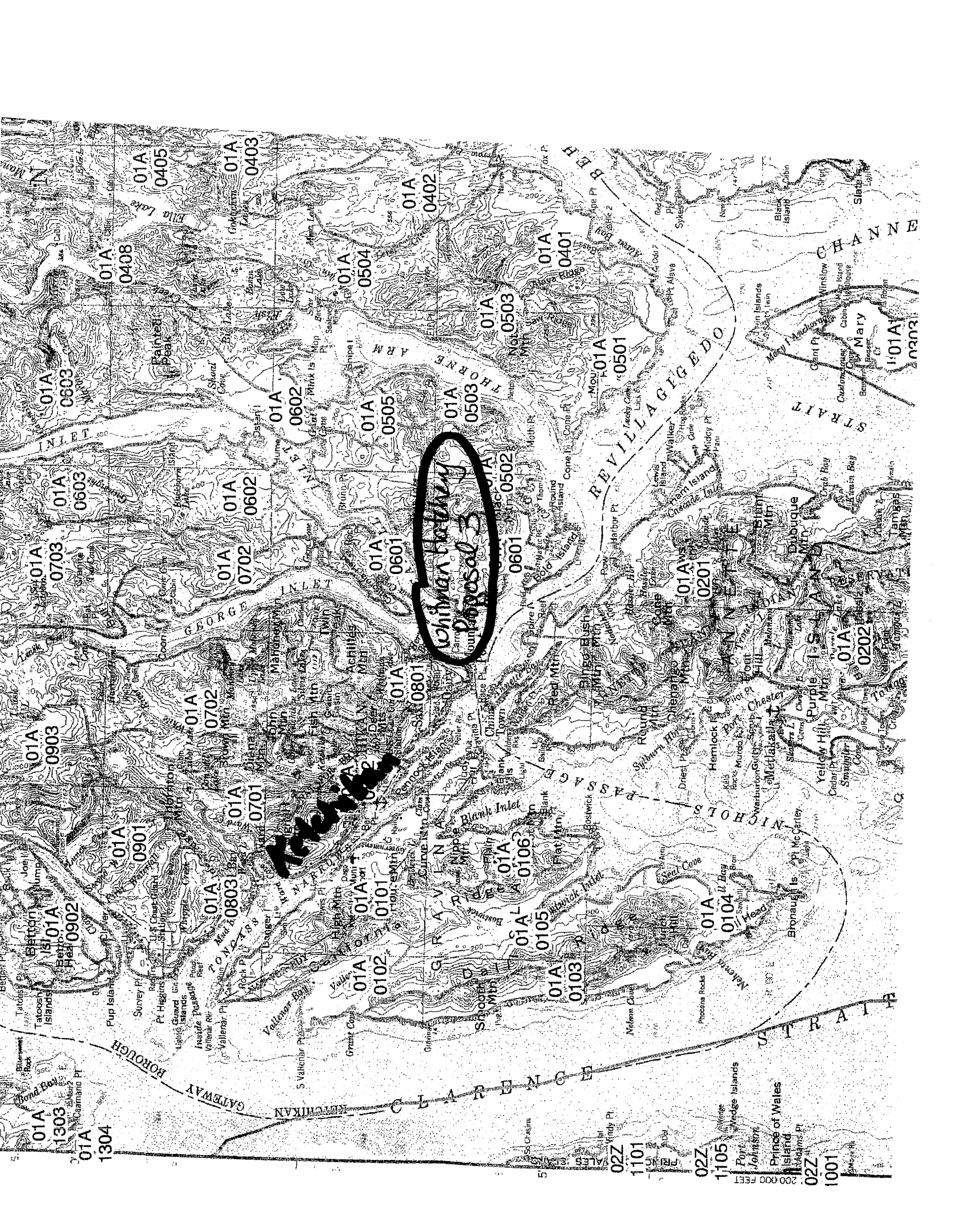
CANAL

BRITISH COLUMBIA

1 500 000 FEET







Whimian Cove  
Proposal 3

REVILLAGIGEDO STRAIT

NICHOLS STRAIT

GATEWAY BOROUGH

S. VALLINAR Pt.

Prince of Wales Island

02Z 1001

02Z 1105

02Z 1101

01A 0104

01A 0105

01A 0106

01A 0103

01A 0102

01A 0101

01A 0100

01A 0803

01A 0701

01A 0702

01A 0903

01A 0902

01A 0703

01A 0603

01A 0602

01A 0408

01A 0405

01A 0403

01A 1303

01A 1304

01A 0501

01A 0502

01A 0503

01A 0504

01A 0505

01A 0601

01A 0602

01A 0603

01A 0701

01A 0702

01A 0703

01A 0801

01A 0802

01A 0803

01A 0901

01A 0902

01A 0903

01A 0904

01A 0905

01A 0906

01A 0907

01A 0908

01A 0909

01A 0910

01A 0911

01A 0912

01A 0913

01A 0914

01A 0915

01A 0916

01A 0917

01A 0918

01A 0402

01A 0401

01A 0301

01A 0302

01A 0303

01A 0304

01A 0305

01A 0306

01A 0307

01A 0308

01A 0309

01A 0310

01A 0311

01A 0312

01A 0313

01A 0314

01A 0315

01A 0316

01A 0317

01A 0318

01A 0319

01A 0320

01A 0321

01A 0322

01A 0323

01A 0324

01A 0325

01A 0326

01A 0327

01A 0328

01A 0329

01A 0330