

**Background Information:
Harvests of moose and number of hunters of moose, GMU 13**

**Prepared by:
Division of Subsistence and Division of Wildlife Conservation
Alaska Department of Fish and Game
for the Alaska Board of Game
July 2, 2008**

Please note: the Department of Fish and Game prepared this background information for consideration by the Board of Game to address the court judgment in *Ahtna Tene Nene' Subsistence Committee vs. Alaska Board of Game*. The Board may opt to take emergency action at its July 2, 2008 meeting and more comprehensive action at a later meeting.

Also please note that the following tables and figures are updated versions of similar tables and figures provided to the Board by the department at previous regulatory meetings, including every two years since 1992 at regularly scheduled meetings pertaining to Region II (which address GMU 13 regulatory proposals) and supplemental meetings that have addressed Tier II subsistence hunt provisions.

State Subsistence Procedures (AS 16.05.258)

Board Findings on Moose, GMU 13

- Is there a Customary and Traditional Use of moose in GMU 13?
 - Yes; first finding in early 1980s; affirmed 1992
- Is there a Harvestable Surplus of moose in GMU 13?
 - Yes, a harvestable surplus is available
- What is the Amount Reasonably Necessary for Subsistence?
 - 600 moose (1992) (BOG Finding No. 92-60-BOG)
- Does the harvestable surplus allow for all or only some uses?
 - This is a Board determination.

Table 1. Moose Harvests in GMU 13 by Area of Residence and Hunt Type, 1990 to 2007

Year	Harvests by Residents of GMU 11 and 13				Harvests by Other Alaska Residents				Total Harvests by All Alaskans			
	State Harvest Ticket	State Tier II hunt	Federal Permit	Subtotal	State Harvest Ticket	State Tier II hunt	Federal Permit	Subtotal	State Harvest Ticket	State Tier II hunt	Federal Permit	Total
1990	28		74	102	346			346	374	0	74	448
1991	53		102	155	531			531	584	0	102	686
1992	45		56	101	518			518	563	0	56	619
1993	101		49	150	1,019			1,019	1,120	0	49	1,169
1994	83		30	113	747			747	830	0	30	860
1995	90	18	44	152	716	8		724	806	26	44	876
1996	85	22	43	150	765	11		776	850	33	43	926
1997	66	21	43	130	709	4		713	775	25	43	843
1998	66	29	41	136	698	8		706	764	37	41	842
1999	77	25	50	152	551	9		560	628	34	50	712
2000	39	34	32	105	386	6		392	425	40	32	497
2001	44	31	29	104	312	4		316	356	35	29	420
2002	54	23	37	114	407	31	17	455	461	54	54	569
2003	64	22	50	136	432	40	11	483	496	62	61	619
2004	48	28	36	112	458	28	14	500	506	56	50	612
2005	44	19	40	103	430	22	11	463	474	41	51	566
2006	53	23	34	110	533	28	13	574	586	51	47	684
2007	67	24	38	129	451	23	14	488	518	47	52	617
Recent 5-Year Average	55	23	40	118	461	28	13	502	516	51	52	620
Recent 10-Year Average	56	26	39	120	466	20	13	494	521	46	47	614
Average, 1990 - 2007	62	25	46	125	556	17	13	573	618	30	50	698

Source: Division of Wildlife Conservation, ADF&G

Table 2. Number of Moose Hunters,Harvests, and Success Rates by Area of Residence, GMU 13, 1963 - 2007

	Number of Hunters			Number of Moose Harvested			Success Rate		
	Local	Nonlocal	Total	Local	Nonlocal	Total	Local	Nonlocal	All
1963 ^a						1,735			
1964 ^a						1,607			
1965 ^a						1,331			
1966 ^a			4,163			1,553			37.3%
1967			3,578			1,243			34.7%
1968			4,035			1,210			30.0%
1969	296	2,544	2,840	94	815	909	31.8%	32.0%	32.0%
1970			2,622			852			32.5%
1971	343	3,965	4,308	122	1,281	1,403	35.6%	32.3%	32.6%
1972	196	2,448	2,644	34	398	432	17.3%	16.3%	16.3%
1973	157	2,029	2,186	39	410	449	24.8%	20.2%	20.5%
1974	200	2,240	2,440	43	576	619	21.5%	25.7%	25.4%
1975	210	2,486	2,696	45	536	581	21.4%	21.6%	21.6%
1976	286	2,648	2,934	58	570	628	20.3%	21.5%	21.4%
1977	241	1,922	2,163	64	548	612	26.6%	28.5%	28.3%
1978	382	2,338	2,720	99	614	713	25.9%	26.3%	26.2%
1979	301	2,004	2,305	101	734	835	33.6%	36.6%	36.2%
1980	366	2,249	2,615	76	374	450	20.8%	16.6%	17.2%
1981	437	2,473	2,910	106	581	687	24.3%	23.5%	23.6%
1982	437	2,329	2,766	74	484	558	16.9%	20.8%	20.2%
1983	584	2,510	3,094	147	666	813	25.2%	26.5%	26.3%
1984	576	2,722	3,298	131	640	771	22.7%	23.5%	23.4%
1985	650	2,715	3,365	135	598	733	20.8%	22.0%	21.8%
1986 ^b	1,166	3,112	4,278	230	813	1,043	19.7%	26.1%	24.4%
1987 ^b	850	2,956	3,806	199	633	832	23.4%	21.4%	21.9%
1988 ^b	928	2,959	3,887	263	821	1,084	28.3%	27.7%	27.9%
1989 ^b	755	3,416	4,171	249	818	1,067	33.0%	23.9%	25.6%
1990	741	1,878	2,619	102	346	448	13.8%	18.4%	17.1%
1991	865	2,132	2,997	155	531	686	17.9%	24.9%	22.9%
1992	825	2,307	3,132	101	518	619	12.2%	22.5%	19.8%
1993	912	4,524	5,436	138	1,020	1,158	15.1%	22.5%	21.3%
1994	924	4,784	5,708	113	745	858	12.2%	15.6%	15.0%
1995	961	4,847	5,808	152	724	876	15.8%	14.9%	15.1%
1996	937	4,897	5,834	150	776	926	16.0%	15.8%	15.9%
1997	865	4,815	5,680	130	713	843	15.0%	14.8%	14.8%
1998	943	4,246	5,189	136	706	842	14.4%	16.6%	16.2%
1999	943	3,834	4,777	153	576	729	16.2%	15.0%	15.3%
2000	870	3,072	3,942	104	406	510	12.0%	13.2%	12.9%
2001	898	2,531	3,429	104	324	428	11.6%	12.8%	12.5%
2002	924	2,507	3,431	114	455	569	12.3%	18.1%	16.6%
2003	875	2,599	3,474	136	483	619	15.5%	18.6%	17.8%
2004	826	2,743	3,569	112	500	612	13.6%	18.2%	17.1%
2005	864	2,904	3,768	103	463	566	11.9%	15.9%	15.0%
2006	855	3,227	4,082	110	574	684	12.9%	17.8%	16.8%
2007	743	2,950	3,693	129	489	618	17.4%	16.6%	16.7%

^a For 1963 through 1966, includes all hunters, including nonresidents. Nonresidents not included in totals from 1967 to present.

^b From 1986 through 1989, residents of GMU 13 communities qualified for registration subsistence permits.

Sources: ADF&G 1992c through 1989; ADF&G, Division of Wildlife Conservation, 1990 to present

Table 3. Number of Tier II Hunt Applications, Permits Awarded, Hunters, and Harvest by Area of Residence, GMU 13 Moose (TM300) 1990 to 2007

		TM300: GMU 13 Moose			
		Total Applications	Permits Awarded	Permit Hunted	Permit Resulted in Harvest
1995/1996	Copper Basin	623	124	97	18
	Other	1,219	26	22	8
	Total	1,842	150	119	26
1996/1997	Copper Basin	436	115	100	22
	Other	1,183	35	31	11
	Total	1,619	150	131	33
1997/1998	Copper Basin	498	135	99	21
	Other	1,279	15	11	4
	Total	1,777	150	110	25
1998/1999	Copper Basin	433	129	106	29
	Other	1,444	24	23	8
	Total	1,877	153	129	37
1999/2000	Copper Basin	520	124	94	25
	Other	1,376	26	23	9
	Total	1,896	150	117	34
2000/2001	Copper Basin	423	137	114	34
	Other	1,061	12	12	6
	Total	1,484	149	126	40
2001/2002	Copper Basin	412	138	116	31
	Other	1,072	12	10	4
	Total	1,484	150	126	35
2002/2003	Copper Basin	340	96	80	23
	Other	1,019	54	48	31
	Total	1,359	150	128	54
2003/2004	Copper Basin	312	68	56	22
	Other	1,170	82	74	40
	Total	1,482	150	130	62
2004/2005	Copper Basin	297	84	67	28
	Other	1,168	66	48	28
	Total	1,465	150	115	56
2005/2006	Copper Basin	288	90	72	19
	Other	946	60	55	22
	Total	1,234	150	127	41
2006/2007	Copper Basin	270	68	62	23
	Other	1,113	82	67	28
	Total	1,383	150	129	51
2007/2008	Copper Basin	228	75	67	24
	Other	1,005	75	61	23
	Total	1,233	150	128	47

Source: Division of Wildlife Conservation, ADF&G

Figure 1. Number of Alaska Resident Hunters of Moose in GMU 13 and Number of Moose Harvested, All Hunts, 1967 - 2007

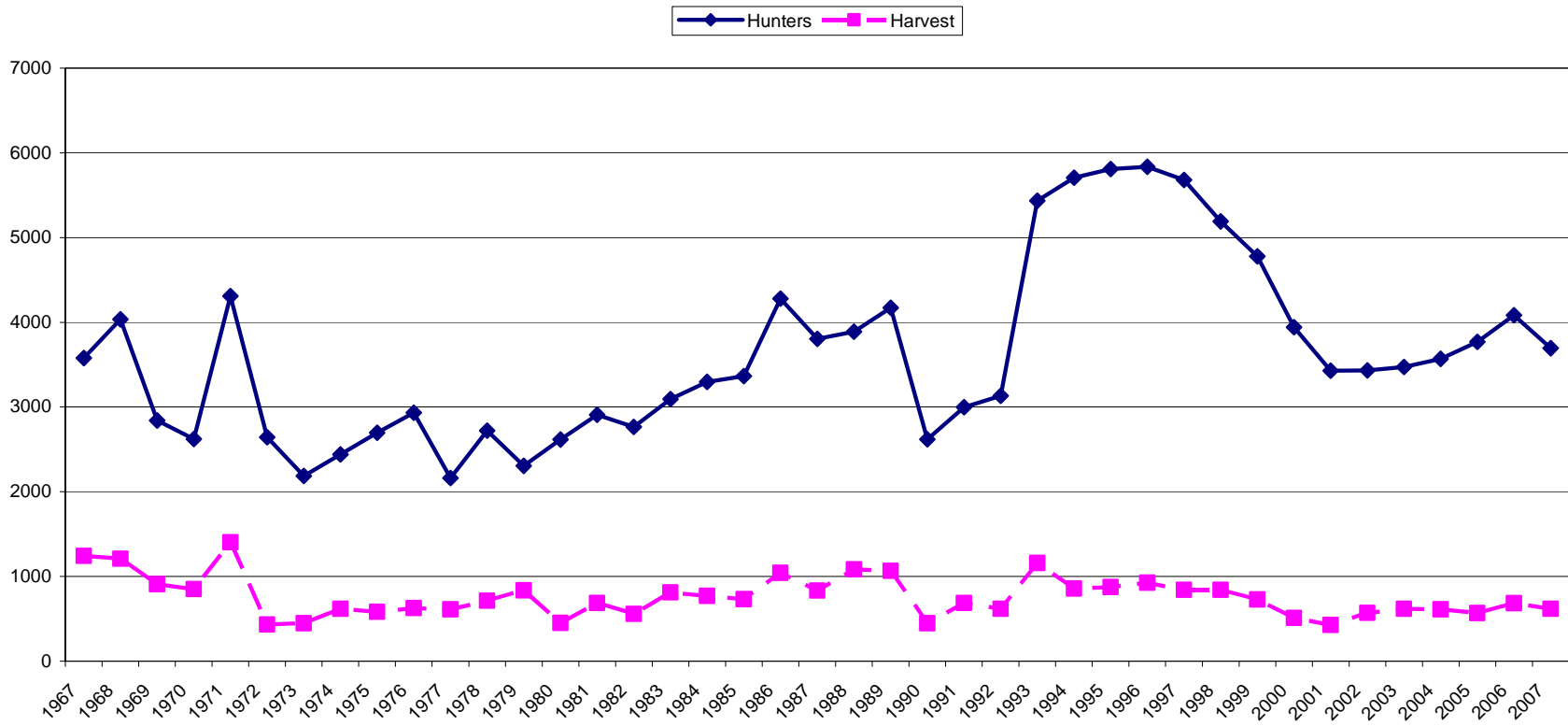


Figure 2. Number of Local Resident Hunters of Moose in GMU 13 and Number of Moose Harvested, All Hunts, 1967 - 2007

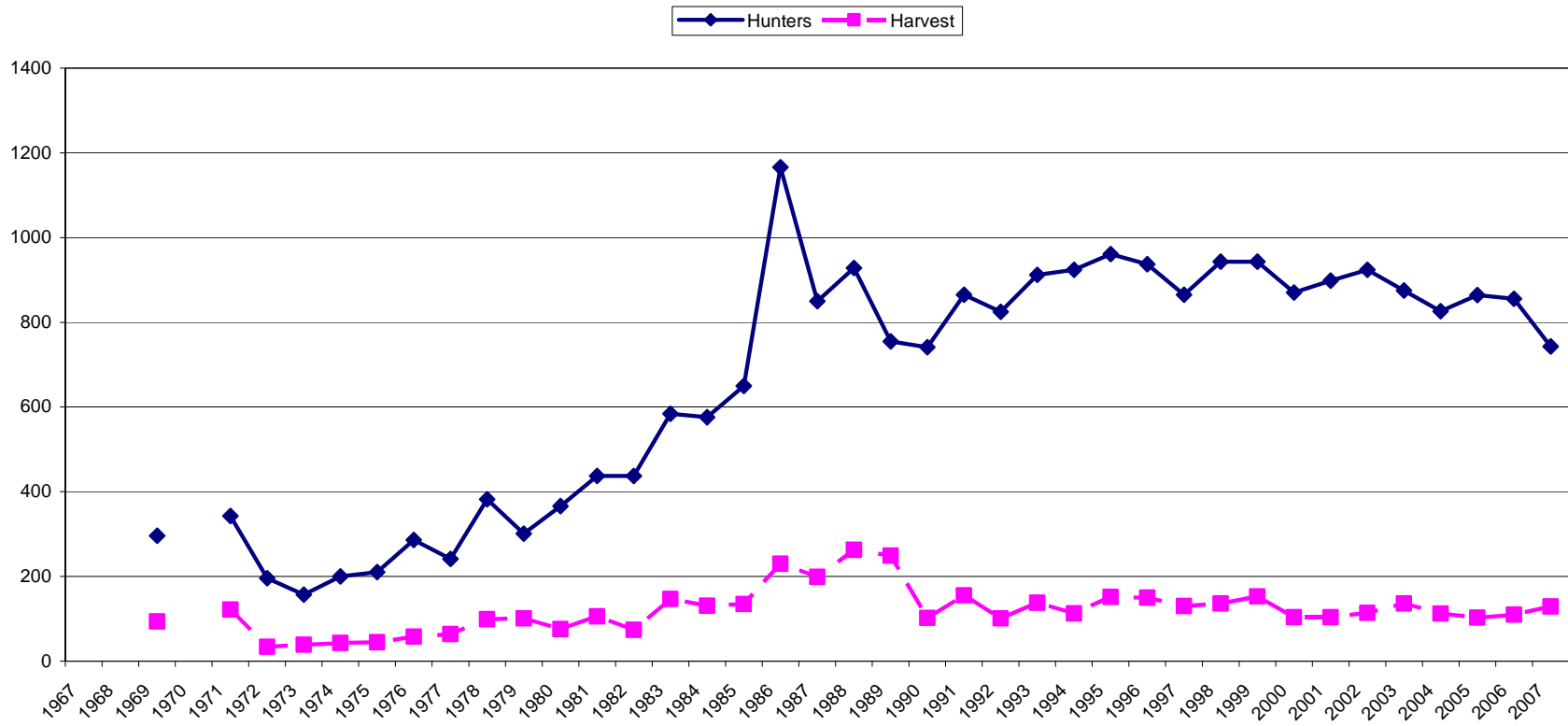


Figure 3. Percentage of Moose Hunters in GMU 13 Who Are Non-local Residents and Percentage of Total Moose Harvested by Non-local Hunters, All Hunts, 1967 - 2007

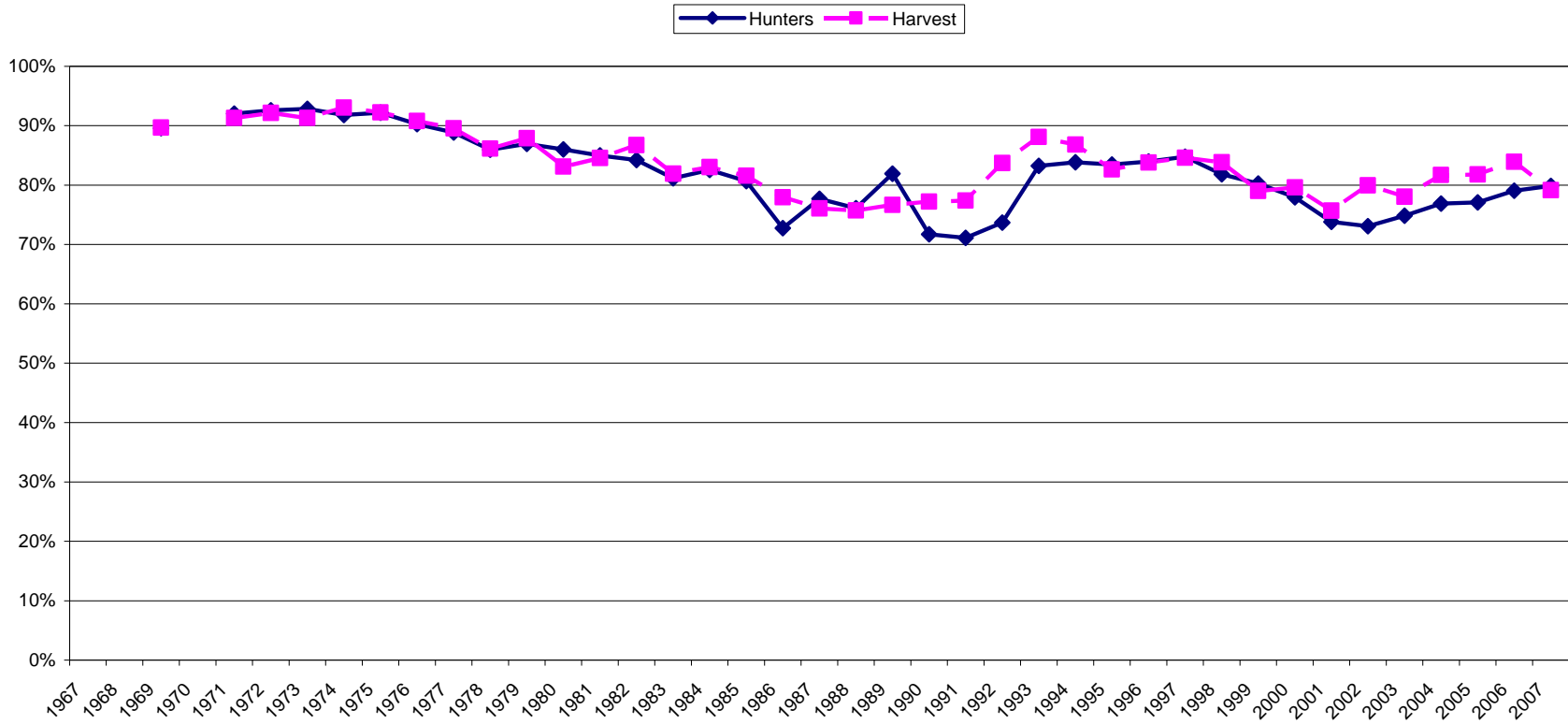


Figure 4. Hunter Success Rates, GMU 13 Moose, 1966 - 2007

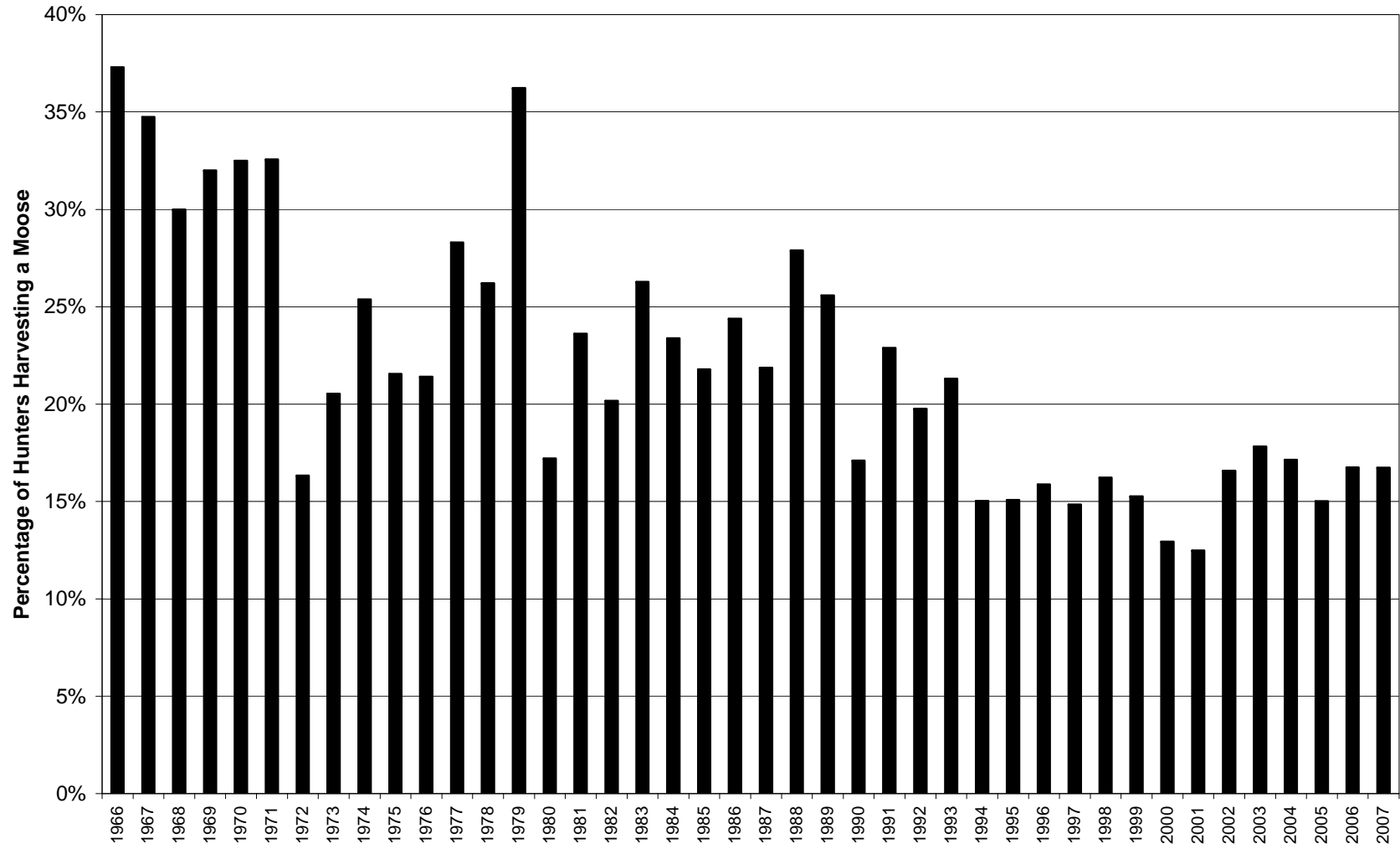


Figure 5. Moose Harvests in GMU 13 by Hunt and Area of Residence, 1995 - 2007

